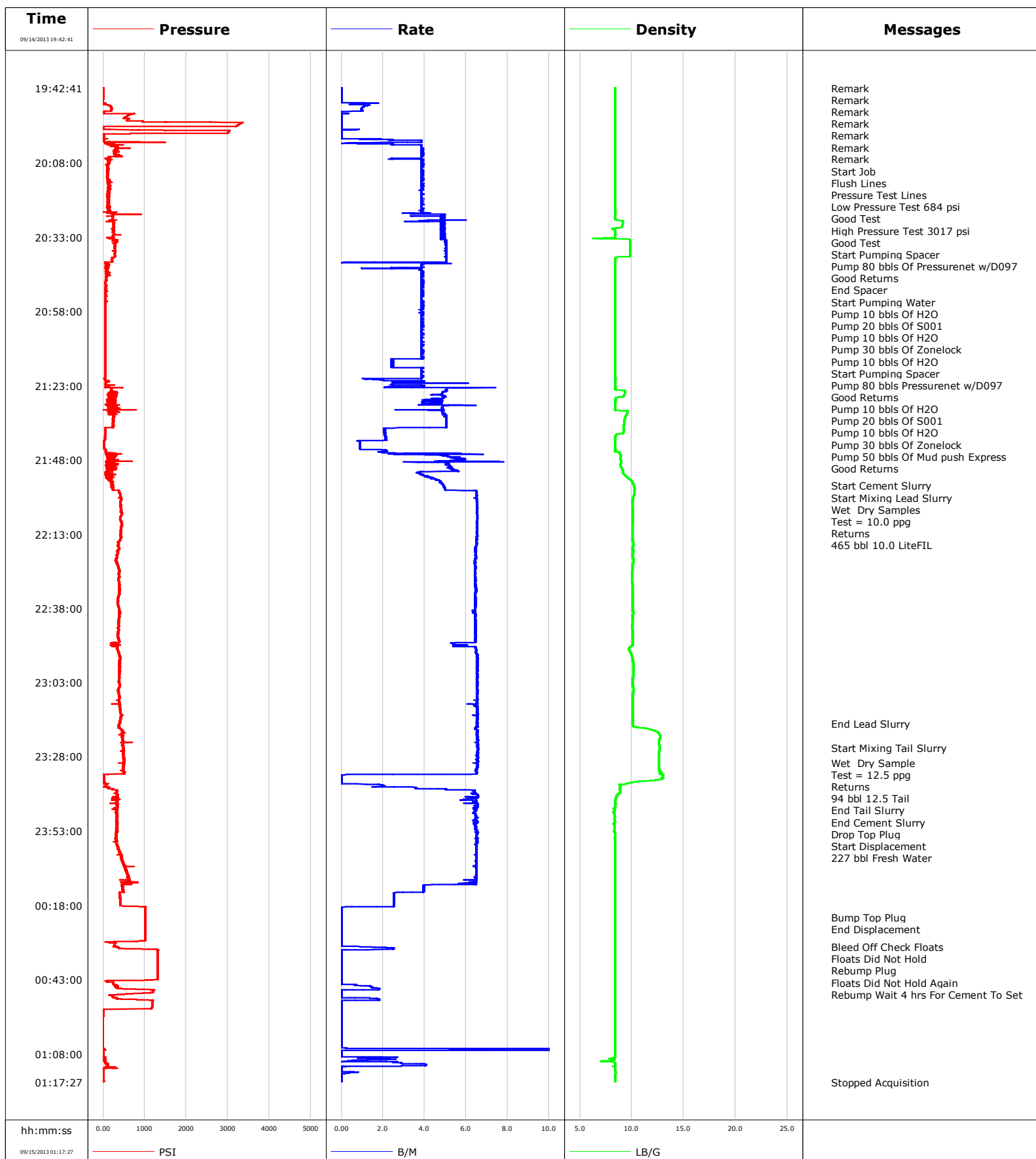


Well SGU 8506E-34
Field Story Gulch
Engineer Jordan Moreland / Justin Zika
Country United States

Client Encana
SIR No. CMI1-00255
Job Type 9 5/8 Surface
Job Date 09-14-2013

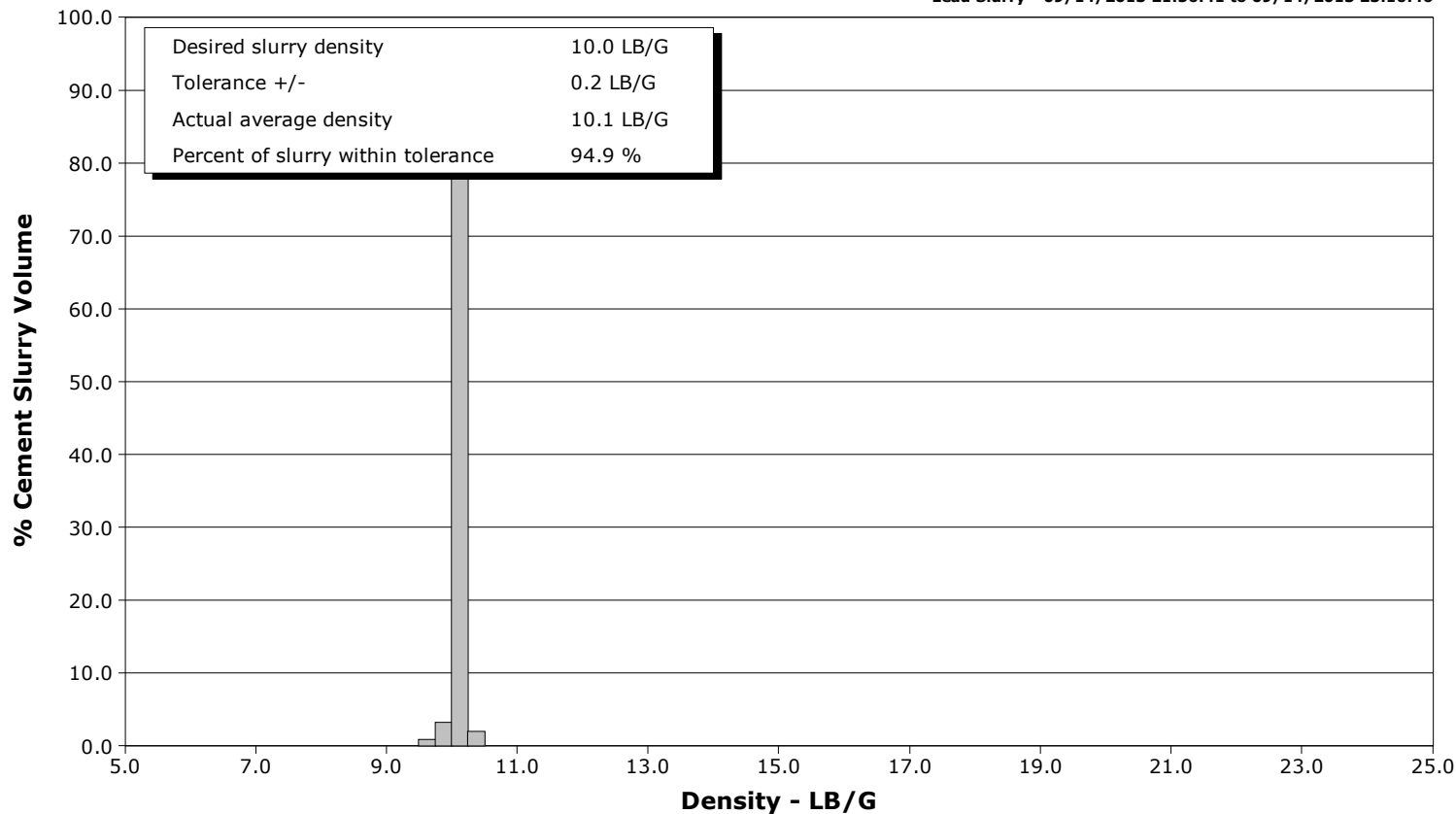


Schlumberger Cementing Qa/Qc Density Report

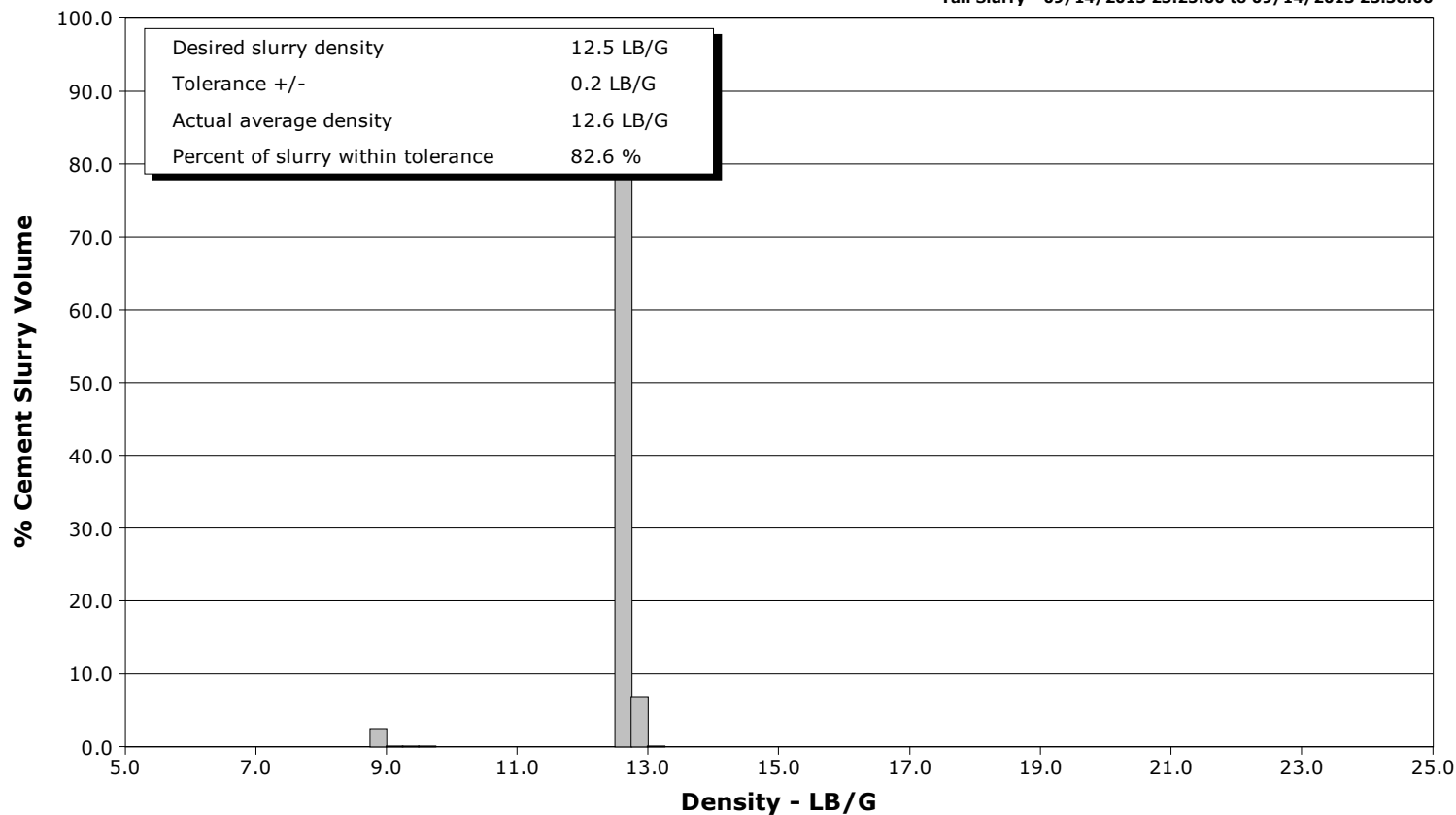
Well SGU 8506E-34
Field Story Gulch
Engineer Jordan Moreland / Justin Zika
Country United States

Client Encana
SIR No. CMI1-00255
Job Type 9 5/8 Surface
Job Date 09-14-2013

Lead Slurry - 09/14/2013 21:56:41 to 09/14/2013 23:16:46



Tail Slurry - 09/14/2013 23:25:00 to 09/14/2013 23:38:00





Cementing Service Report

				Customer Encana		Job Number CMI1-00255		
Well SGU 8506E-34			Location (legal) E34		Schlumberger Location GCO		Job Start Sep/14/2013	
Field Story Gulch		Formation Name/Type		Deviation	Bit Size 14.8 in	Well MD	Well TVD	
County Garfield		State/Province Colorado		BHP	BHST 120 degF	BHCT 88 degF	Pore Press. Gradient	
Well Master 0631491989		API/UWI						
Rig Name Patterson 326		Drilled For Gas	Service Via Land	Casing/Liner				
				Depth, ft	Size, in	Weight, lb/ft	Grade	Thread
Offshore Zone		Well Class New	Well Type Development	2981.0	9.630	32.3	J55	8RD
				0.0	0.000	0.0		
Drilling Fluid Type		Max. Density	Plastic Viscosity	Tubing/Drill Pipe				
				Depth,	Size,	Weight,	Grade	Thread
Service Line Cementing		Job Type 9 5/8 Surface						
Max. Allowed Tub. Press 3000 psi		Max. Allowed Ann. Press	WH Connection Single Cement head	Perforations/Open Hole				
				Top,	Bottom,		No. of Shots	Total Interval
								Diameter
Service Instructions Rate And Density Checked PressureNET Pill ZONELOCK Pill PressureNET Pill ZONELOCK Pill 50 bbl MUDPUSH EXPRESS 948 sks 10.0 LiteFIL 251 sks 12.5 Tail Displace 227 bbl Fresh Water				Treat Down Casing	Displacement 227.0 bbl	Packer Type	Packer Depth	
				Tubing Vol.	Casing Vol. 229.0 bbl	Annular Vol. 379.0 bbl	Openhole Vol. 627.0 bbl	
Casing/Tubing Secured <input checked="" type="checkbox"/>		1 Hole Vol. Circulated prior to Cement <input checked="" type="checkbox"/>		Casing Tools		Squeeze Job		
Lift Pressure 1475 psi				Shoe Type Guide		Squeeze Type		
Pipe Rotated <input type="checkbox"/>		Pipe Reciprocated <input type="checkbox"/>		Shoe Depth 2981.0 ft		Tool Type		
No. Centralizers		Top Plugs 1	Bottom Plugs	Stage Tool Type		Tool Depth		
Cement Head Type Single				Stage Tool Depth		Tail Pipe Size		
Job Scheduled For Sep/14/2013		Arrived on Location Sep/14/2013	Leave Location Sep/14/2013	Collar Type Float		Tail Pipe Depth		
				Collar Depth 2936.0 ft		Sqz. Total Vol.		
Date	Time 24-hr clock	Treating Pressure PSI	Flow Rate B/M	Density LB/G	Volume BBL	Message		
09/14/2013	18:46:06					Started Acquisition		
09/14/2013	19:42:41	1	0.0	8.42	0.0			
09/14/2013	19:42:45					Remark		
09/14/2013	19:42:45	1	0.0	8.42	0.0			
09/14/2013	19:42:46					Remark		
09/14/2013	19:42:46					Remark		
09/14/2013	19:42:46					Remark		
09/14/2013	19:42:46					Remark		
09/14/2013	19:42:46	1	0.0	8.42	0.0			
09/14/2013	19:42:47					Remark		
09/14/2013	19:42:47					Remark		
09/14/2013	19:42:47	1	0.0	8.42	0.0			
09/14/2013	19:42:55					Start Job		
09/14/2013	19:42:55	1	0.0	8.42	0.0			
09/14/2013	19:42:56					Flush Lines		
09/14/2013	19:42:56	1	0.0	8.42	0.0			
09/14/2013	19:42:58					Pressure Test Lines		
09/14/2013	19:42:58	0	0.0	8.42	0.0			
09/14/2013	19:43:00					Low Pressure Test 684 psi		
09/14/2013	19:43:00					Good Test		
09/14/2013	19:43:00	1	0.0	8.42	0.0			

Well			Field		Job Start		Customer		Job Number	
SGU 8506E-34			Story Gulch		Sep/14/2013		Encana		CMI1-00255	
Date	Time 24-hr clock	Treating Pressure PSI	Flow Rate B/M	Density LB/G	Volume BBL	Message				
09/14/2013	19:43:01	0	0.0	8.42	0.0					
09/14/2013	19:43:02					Good Test				
09/14/2013	19:43:02	1	0.0	8.42	0.0					
09/14/2013	19:44:26	0	0.0	8.42	0.0					
09/14/2013	19:46:46	-1	0.0	8.42	0.0					
09/14/2013	19:49:06	173	1.1	8.42	1.3					
09/14/2013	19:51:26	511	0.4	8.42	2.9					
09/14/2013	19:53:46	575	0.0	8.42	2.9					
09/14/2013	19:56:06	3	0.0	8.42	2.9					
09/14/2013	19:58:26	16	0.0	8.42	3.0					
09/14/2013	20:00:46	15	3.9	8.42	5.4					
09/14/2013	20:03:06	655	4.0	8.42	12.7					
09/14/2013	20:05:26	325	3.9	8.42	21.7					
09/14/2013	20:07:46	128	3.9	8.42	30.2					
09/14/2013	20:08:03					Start Pumping Spacer				
09/14/2013	20:08:03	126	3.9	8.42	31.3					
09/14/2013	20:08:09					Pump 80 bbls Of Pressurenent w/D097				
09/14/2013	20:08:09	140	3.9	8.42	31.7					
09/14/2013	20:08:10					Good Returns				
09/14/2013	20:08:10	144	4.0	8.42	31.8					
09/14/2013	20:10:06	117	3.9	8.42	39.3					
09/14/2013	20:12:26	111	3.9	8.42	48.3					
09/14/2013	20:14:46	120	3.9	8.42	57.3					
09/14/2013	20:17:06	121	3.9	8.42	66.3					
09/14/2013	20:19:26	133	3.9	8.42	75.3					
09/14/2013	20:21:46	142	3.9	8.42	84.3					
09/14/2013	20:24:06	156	3.9	8.42	93.3					
09/14/2013	20:25:09					End Spacer				
09/14/2013	20:25:09	209	3.5	8.41	97.3					
09/14/2013	20:25:49					Start Pumping Water				
09/14/2013	20:25:49	236	4.9	8.42	100.4					
09/14/2013	20:25:52					Pump 10 bbls Of H2O				
09/14/2013	20:25:52	233	4.8	8.42	100.6					
09/14/2013	20:26:26	234	4.8	8.42	103.3					
09/14/2013	20:27:29					Pump 20 bbls Of S001				
09/14/2013	20:27:29	157	3.7	9.05	108.3					
09/14/2013	20:28:46	249	4.8	9.13	114.2					
09/14/2013	20:31:06	253	4.9	8.40	125.5					
09/14/2013	20:33:26	138	4.8	7.20	136.9					
09/14/2013	20:33:47					Pump 10 bbls Of H2O				
09/14/2013	20:33:47	258	4.9	9.78	138.6					
09/14/2013	20:35:46	288	5.0	9.86	148.5					
09/14/2013	20:38:06	283	5.0	9.85	160.3					
09/14/2013	20:39:31					Pump 30 bbls Of Zonelock				
09/14/2013	20:39:31	278	5.0	9.85	167.4					
09/14/2013	20:39:32					Pump 10 bbls Of H2O				
09/14/2013	20:39:32	278	5.0	9.85	167.5					
09/14/2013	20:40:26	217	5.0	8.42	172.0					
09/14/2013	20:41:47					Start Pumping Spacer				
09/14/2013	20:41:47	53	4.8	8.42	178.0					
09/14/2013	20:42:46	67	3.9	8.42	182.0					
09/14/2013	20:45:06	89	3.9	8.42	190.4					
09/14/2013	20:47:26	75	3.9	8.42	199.4					
09/14/2013	20:49:46	60	4.0	8.42	208.4					

Well			Field		Job Start		Customer		Job Number	
SGU 8506E-34			Story Gulch		Sep/14/2013		Encana		CMI1-00255	
Date	Time 24-hr clock	Treating Pressure PSI	Flow Rate B/M	Density LB/G	Volume BBL	Message				
09/14/2013	20:54:26	57	3.9	8.42	226.4					
09/14/2013	20:56:46	55	3.9	8.42	235.5					
09/14/2013	20:59:06	56	3.9	8.43	244.5					
09/14/2013	21:01:26	55	3.9	8.42	253.5					
09/14/2013	21:03:46	55	3.9	8.43	262.5					
09/14/2013	21:06:06	56	3.9	8.43	271.5					
09/14/2013	21:08:26	55	3.9	8.43	280.5					
09/14/2013	21:10:46	54	3.9	8.43	289.5					
09/14/2013	21:13:06	55	3.9	8.42	298.5					
09/14/2013	21:15:01					Pump 80 bbls Pressurenets w/D097				
09/14/2013	21:15:01	55	2.5	8.43	304.6					
09/14/2013	21:15:02					Good Returns				
09/14/2013	21:15:02	55	2.5	8.43	304.6					
09/14/2013	21:15:26	55	2.5	8.42	305.6					
09/14/2013	21:17:46	54	3.9	8.42	312.4					
09/14/2013	21:20:06	55	3.9	8.42	321.4					
09/14/2013	21:22:26	63	2.5	8.42	328.2					
09/14/2013	21:24:29					Pump 10 bbls Of H2O				
09/14/2013	21:24:29	188	5.0	8.51	336.2					
09/14/2013	21:24:30					Pump 20 bbls Of S001				
09/14/2013	21:24:30	192	5.0	8.51	336.3					
09/14/2013	21:24:46	211	5.0	9.34	337.6					
09/14/2013	21:27:06	125	4.9	8.46	349.0					
09/14/2013	21:28:54					Pump 10 bbls Of H2O				
09/14/2013	21:28:54					Pump 30 bbls Of Zonelock				
09/14/2013	21:28:54	267	4.6	8.42	357.1					
09/14/2013	21:29:26	90	4.0	8.42	359.4					
09/14/2013	21:31:46	241	4.8	9.60	370.8					
09/14/2013	21:34:06	256	5.0	9.34	382.4					
09/14/2013	21:36:26	255	5.0	9.23	394.2					
09/14/2013	21:38:46	56	2.1	9.20	401.4					
09/14/2013	21:41:06	47	2.1	8.42	406.4					
09/14/2013	21:43:26	14	0.9	8.42	408.9					
09/14/2013	21:45:46	64	2.2	8.82	412.5					
09/14/2013	21:45:54					Pump 50 bbls Of Mud push Express				
09/14/2013	21:45:54					Good Returns				
09/14/2013	21:45:54	69	3.8	8.85	413.0					
09/14/2013	21:48:06	264	5.9	8.95	424.1					
09/14/2013	21:50:26	83	5.2	8.97	436.0					
09/14/2013	21:52:46	167	3.8	9.23	447.2					
09/14/2013	21:55:06	193	4.7	9.97	457.2					
09/14/2013	21:56:38					Start Cement Slurry				
09/14/2013	21:56:38	207	4.9	10.20	464.6					
09/14/2013	21:56:41					Start Mixing Lead Slurry				
09/14/2013	21:56:41	240	4.9	10.20	464.8					
09/14/2013	21:56:42					Wet Dry Samples				
09/14/2013	21:56:42					Test = 10.0 ppg				
09/14/2013	21:56:42					Returns				
09/14/2013	21:56:42					465 bbl 10.0 LiteFIL				
09/14/2013	21:56:42	209	4.9	10.20	464.9					
09/14/2013	21:57:26	195	5.0	10.27	468.5					
09/14/2013	21:59:46	418	6.5	10.22	482.4					
09/14/2013	22:02:06	416	6.5	10.09	497.6					
09/14/2013	22:04:26	430	6.5	10.10	512.8					

Well			Field		Job Start	Customer		Job Number
SGU 8506E-34			Story Gulch		Sep/14/2013	Encana		CMI1-00255
Date	Time 24-hr clock	Treating Pressure PSI	Flow Rate B/M	Density LB/G	Volume BBL	Message		
09/14/2013	22:09:06	448	6.5	10.12	543.3			
09/14/2013	22:11:26	430	6.5	10.06	558.5			
09/14/2013	22:13:46	416	6.5	10.07	573.8			
09/14/2013	22:16:06	368	6.5	10.15	588.9			
09/14/2013	22:18:26	357	6.5	10.14	604.1			
09/14/2013	22:20:46	331	6.5	10.09	619.1			
09/14/2013	22:23:06	326	6.4	10.10	634.2			
09/14/2013	22:25:26	380	6.4	10.05	649.2			
09/14/2013	22:27:46	360	6.5	10.03	664.3			
09/14/2013	22:30:06	395	6.5	10.07	679.3			
09/14/2013	22:32:26	376	6.5	10.11	694.4			
09/14/2013	22:34:46	363	6.5	10.12	709.5			
09/14/2013	22:37:06	368	6.5	10.12	724.5			
09/14/2013	22:39:26	393	6.4	10.16	739.5			
09/14/2013	22:41:46	383	6.5	10.10	754.6			
09/14/2013	22:44:06	381	6.5	10.04	769.6			
09/14/2013	22:46:26	352	6.5	10.12	784.7			
09/14/2013	22:48:46	381	6.5	10.11	799.8			
09/14/2013	22:51:06	350	6.5	9.84	813.6			
09/14/2013	22:53:26	382	6.5	9.96	828.7			
09/14/2013	22:55:46	402	6.5	10.13	843.9			
09/14/2013	22:58:06	390	6.5	10.15	859.2			
09/14/2013	23:00:26	377	6.5	10.16	874.4			
09/14/2013	23:02:46	377	6.5	10.13	889.7			
09/14/2013	23:05:06	377	6.5	10.16	904.9			
09/14/2013	23:07:26	394	6.5	10.10	920.2			
09/14/2013	23:09:46	385	6.5	10.13	935.4			
09/14/2013	23:12:06	402	6.5	10.11	950.6			
09/14/2013	23:14:26	433	6.5	10.10	965.8			
09/14/2013	23:16:46					End Lead Slurry		
09/14/2013	23:16:46	405	6.5	10.13	981.1			
09/14/2013	23:19:06	452	6.5	12.09	996.3			
09/14/2013	23:21:26	473	6.5	12.74	1011.5			
09/14/2013	23:23:46	477	6.6	12.63	1026.8			
09/14/2013	23:25:00					Start Mixing Tail Slurry		
09/14/2013	23:25:00	473	6.6	12.70	1034.9			
09/14/2013	23:26:06	503	6.5	12.66	1042.1			
09/14/2013	23:28:26	478	6.6	12.60	1057.4			
09/14/2013	23:30:00					Wet Dry Sample		
09/14/2013	23:30:00					Test = 12.5 ppg		
09/14/2013	23:30:00					Returns		
09/14/2013	23:30:00					94 bbl 12.5 Tail		
09/14/2013	23:30:00	502	6.5	12.62	1067.7			
09/14/2013	23:30:46	490	6.5	12.61	1072.7			
09/14/2013	23:33:06	501	6.5	12.68	1087.9			
09/14/2013	23:35:26	21	0.0	12.97	1093.3			
09/14/2013	23:37:46	58	2.0	8.94	1094.4			
09/14/2013	23:38:00					End Tail Slurry		
09/14/2013	23:38:00	51	2.1	8.94	1094.9			
09/14/2013	23:39:00					End Cement Slurry		
09/14/2013	23:39:00	220	5.0	8.85	1098.5			
09/14/2013	23:40:06	320	6.4	8.85	1105.4			
09/14/2013	23:42:26	237	6.0	8.46	1120.3			
09/14/2013	23:43:00					Drop Top Plug		

Well			Field		Job Start	Customer	Job Number
SGU 8506E-34			Story Gulch		Sep/14/2013	Encana	CMI1-00255
Date	Time 24-hr clock	Treating Pressure PSI	Flow Rate B/M	Density LB/G	Volume BBL	Message	
09/14/2013	23:43:00					227 bbl Fresh Water	
09/14/2013	23:43:00	336	6.5	8.42	1123.8		
09/14/2013	23:44:46	335	6.5	8.42	1135.3		
09/14/2013	23:47:06	335	6.4	8.30	1150.3		
09/14/2013	23:49:26	345	6.5	8.36	1165.4		
09/14/2013	23:51:46	351	6.4	8.35	1180.5		
09/14/2013	23:54:06	312	6.5	8.42	1195.7		
09/14/2013	23:56:26	336	6.5	8.42	1210.9		
09/14/2013	23:58:46	374	6.5	8.42	1226.1		
09/15/2013	00:01:06	411	6.5	8.42	1241.2		
09/15/2013	00:03:26	486	6.5	8.42	1256.4		
09/15/2013	00:05:46	525	6.5	8.42	1271.5		
09/15/2013	00:08:06	607	6.5	8.42	1286.6		
09/15/2013	00:10:26	636	6.5	8.42	1301.7		
09/15/2013	00:12:46	462	4.0	8.42	1312.3		
09/15/2013	00:15:06	406	2.5	8.42	1319.5		
09/15/2013	00:17:26	414	2.5	8.42	1325.3		
09/15/2013	00:19:46	1015	0.0	8.42	1328.1		
09/15/2013	00:22:00					Bump Top Plug	
09/15/2013	00:22:00					End Displacement	
09/15/2013	00:22:00	1015	0.0	8.42	1328.1		
09/15/2013	00:22:06	1015	0.0	8.42	1328.1		
09/15/2013	00:24:26	1016	0.0	8.42	1328.1		
09/15/2013	00:26:46	1017	0.0	8.42	1328.1		
09/15/2013	00:29:06	1019	0.0	8.42	1328.1		
09/15/2013	00:31:26	266	0.0	8.42	1328.1		
09/15/2013	00:32:00					Bleed Off Check Floats	
09/15/2013	00:32:00					Floats Did Not Hold	
09/15/2013	00:32:00	353	1.3	8.42	1328.2		
09/15/2013	00:33:46	1308	0.0	8.42	1330.3		
09/15/2013	00:36:00					Rebump Plug	
09/15/2013	00:36:00					Floats Did Not Hold Again	
09/15/2013	00:36:00	1312	0.0	8.42	1330.3		
09/15/2013	00:36:06	1312	0.0	8.42	1330.3		
09/15/2013	00:38:26	1312	0.0	8.42	1330.3		
09/15/2013	00:40:00					Rebump Wait 4 hrs For Cement To Set	
09/15/2013	00:40:00	1312	0.0	8.42	1330.3		
09/15/2013	00:40:46	1312	0.0	8.42	1330.3		
09/15/2013	00:43:06	1213	0.0	8.42	1330.3		
09/15/2013	00:45:26	292	1.4	8.42	1331.1		
09/15/2013	00:47:46	717	0.0	8.42	1332.9		
09/15/2013	00:50:06	1201	0.0	8.42	1334.3		
09/15/2013	00:52:26	1174	0.0	8.42	1334.3		
09/15/2013	00:54:46	-0	0.0	8.42	1334.3		
09/15/2013	00:57:06	-2	0.0	8.42	1334.3		
09/15/2013	00:59:26	-3	0.0	8.42	1334.3		
09/15/2013	01:01:46	-3	0.0	8.42	1334.3		
09/15/2013	01:04:06	-3	0.0	8.42	1334.3		
09/15/2013	01:06:26	12	5.4	8.42	1336.2		
09/15/2013	01:08:46	13	0.0	8.42	1339.4		
09/15/2013	01:11:06	56	2.9	8.38	1342.9		
09/15/2013	01:13:26	5	0.0	8.43	1346.7		
09/15/2013	01:15:46	2	0.0	8.42	1347.1		
09/15/2013	01:17:27	3	0.0	8.42	1347.1		

Well	SGU 8506E-34	Field	Story Gulch	Job Start	Sep/14/2013	Customer	Encana	Job Number	CMI1-00255
------	--------------	-------	-------------	-----------	-------------	----------	--------	------------	------------

Post Job Summary

Average Pump Rates,					Volume of Fluid Injected,			
Slurry	N2	Mud	Maximum Rate		Total Slurry	Mud	Spacer	N2
Treating Pressure Summary,					Breakdown Fluid			
Maximum	Final	Average	Bump Plug to	Breakdown	Type	Volume		Density
Avg. N2 Percent	Designed Slurry Volume		Displacement	Mix Water Temp	Cement Circulated to Surface?	<input checked="" type="checkbox"/>	Volume	
				61 degF	Washed Thru Perfs	<input type="checkbox"/>	To	
Customer or Authorized Representative			Schlumberger Supervisor			Circulation Lost	<input type="checkbox"/>	Job Completed <input checked="" type="checkbox"/>
Mike Quintana			Jordan Moreland / Justin Zika			-		-