

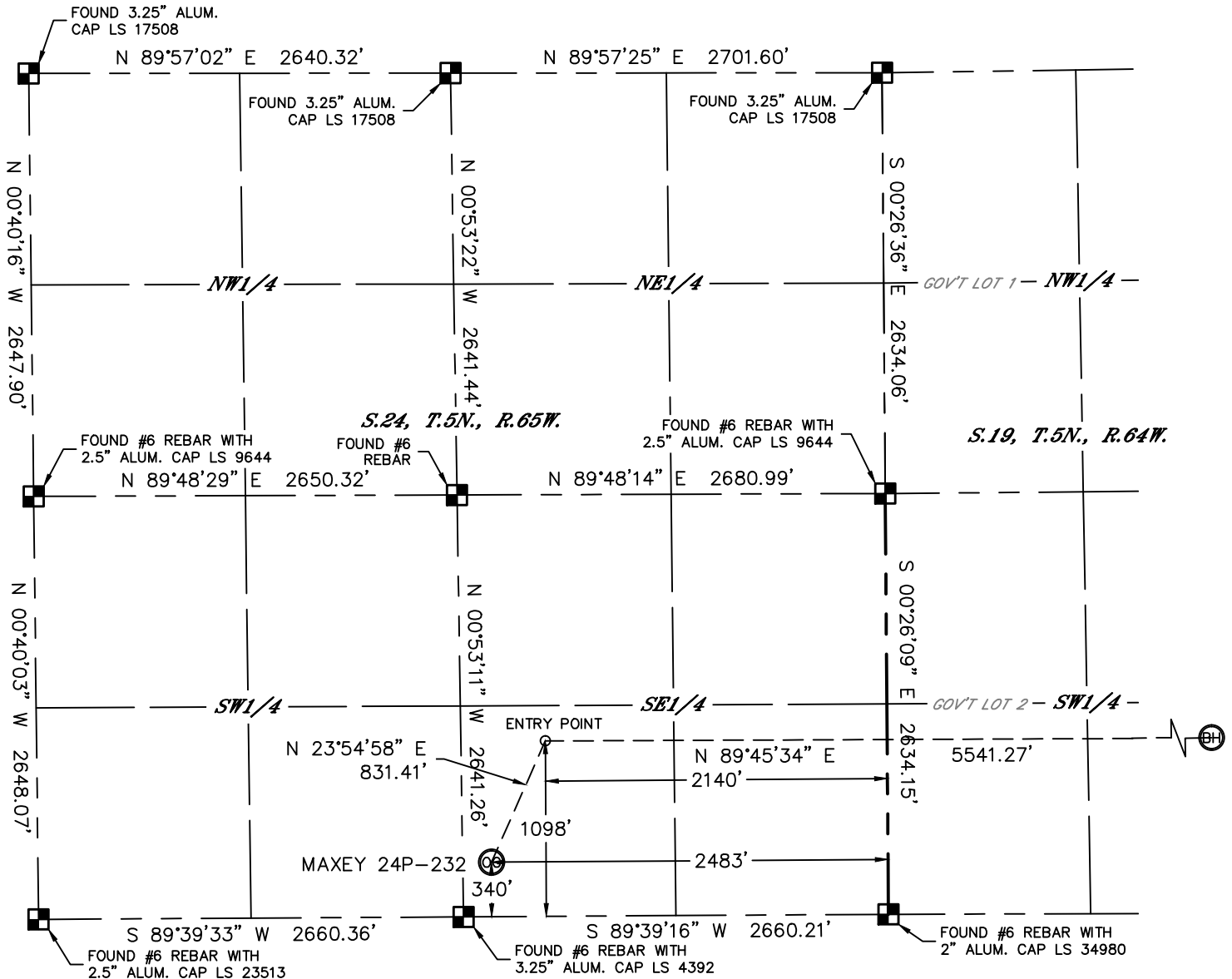


Lat40°, Inc. 1635 Foxtrail Drive, Suite 325 Loveland, CO 970-776-3321

WELL LOCATION CERTIFICATE

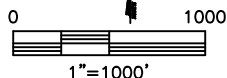
THIS MAP DOES NOT REPRESENT A BOUNDARY SURVEY

SECTION: 24
TOWNSHIP: 5N
RANGE: 65W



In accordance with a request from Al Bragg with PDC ENERGY Lat40°, Inc. has determined the surface location of the MAXEY 24P-232 to be 340' from the SOUTH line and 2483' from the EAST line as measured at right angles from the section lines of Section 24, Township 5 North, Range 65 West and the bottom hole to be 1098' from the SOUTH line and 1800' from the EAST line as measured at right angles from the section lines of Section 19, Township 5 North, Range 64 West of the Sixth Principal Meridian, County of Weld, State of Colorado.

I hereby state that this Well Location Certificate was prepared by me, or under my direct supervision, that the fieldwork was completed on 1/10/2013, for and on behalf of PDC ENERGY. That this is not a Land Survey Plat or an Improvement Survey Plat, and that it is not to be relied upon for establishment of fence, building, or other future improvement lines.



NOTE:

- 1) Bearings shown are Grid Bearings of the Colorado State Plane Coordinate System, North Zone, North American Datum 1983/2007. The lineal dimensions as contained herein are based upon the "U.S. Survey Foot."
- 2) Ground elevations are based on an observed GPS elevation (NAVD 1988 DATUM).
- 3) IMPROVEMENTS: See LOCATION DRAWING for all visible improvements within 400' of disturbed area.
- 4) SURFACE USE: CROPLAND
- 5) INSTRUMENT OPERATOR: BRIAN ROTTINGHAUS

SURFACE LOCATION

LAT: 40.37835°N
LONG: 104.61084°W
PDOP: 1.9
ELEV: 4635'
1/4,1/4: SW1/4SE1/4
NEAREST PROPERTY LINE: 180' WEST

ENTRY POINT

LAT: 40.38043°N
LONG: 104.60960°W

BOTTOM HOLE

LAT: 40.38034°N
LONG: 104.58971°W

NOTE

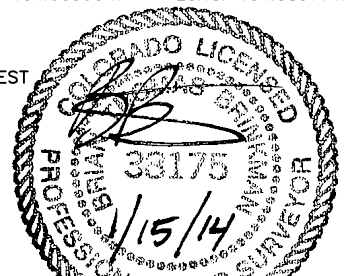
According to Colorado law, you must commence any legal action based upon any defect in this W.L.C. within three years after you discover such defect. In no event, may any action based upon any defect in this survey be commenced more than ten years after the date of the certificate shown hereon. (13-80-105 C.R.S.)

LEGEND

- = ALIQUOT MONUMENT AS DESCRIBED
- = CALCULATED POSITION

SHEET 1 OF 2

Brian T. Brinkman—On behalf of Lat40°, Inc.
Colorado Licensed Professional Land Surveyor No. 38175
DATE: 1/15/2014
PROJECT#: 2013003



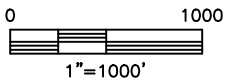
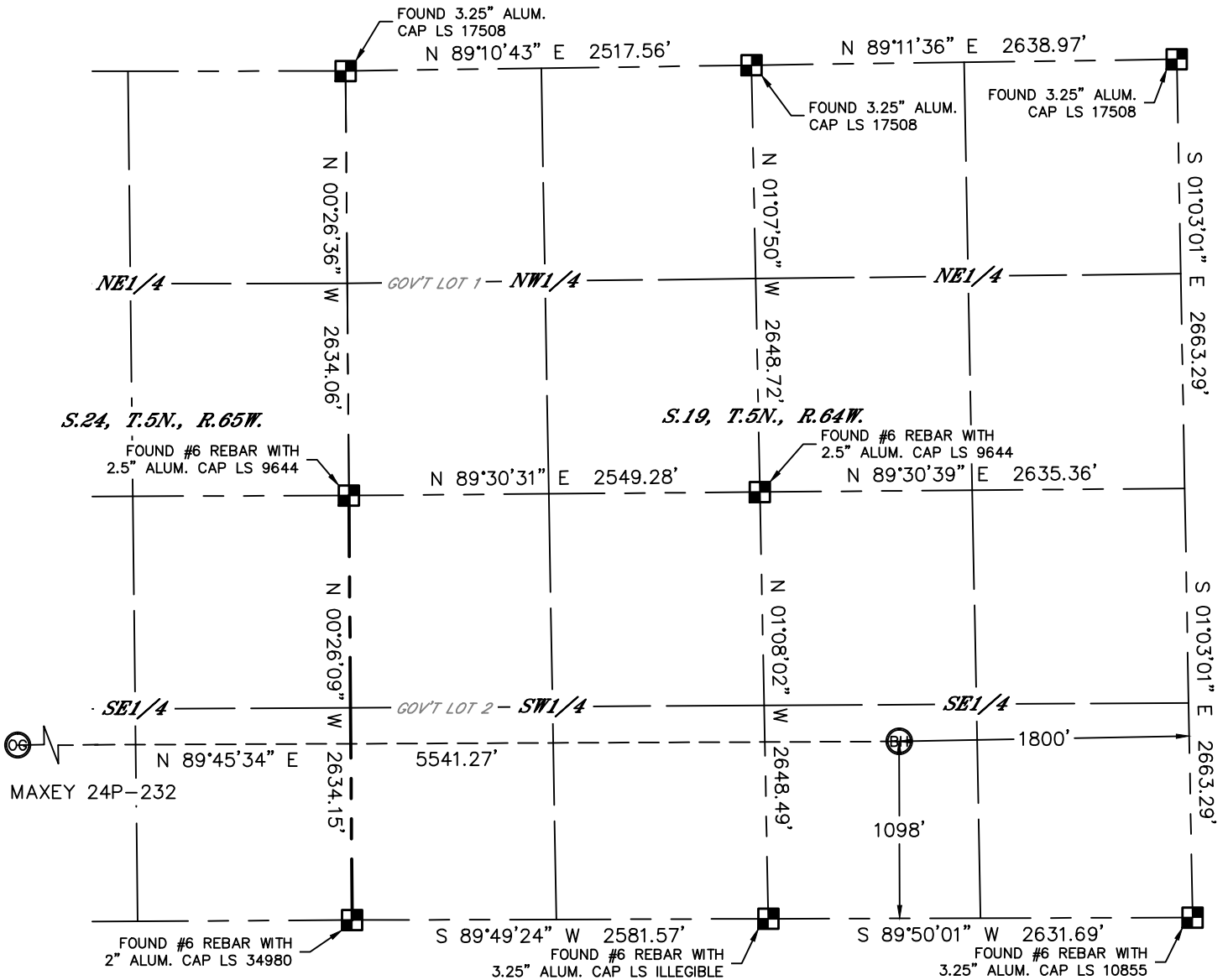


Lat40°, Inc. 1635 Foxtrail Drive, Suite 325 Loveland, CO 970-776-3321

WELL LOCATION CERTIFICATE

THIS MAP DOES NOT REPRESENT A BOUNDARY SURVEY

SECTION: 24
TOWNSHIP: 5N
RANGE: 65W



NOTE

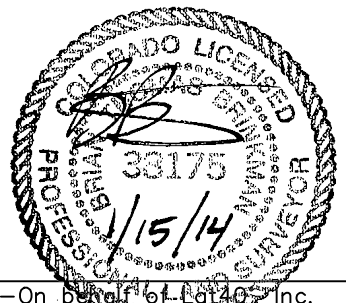
According to Colorado law, you must commence any legal action based upon any defect in this W.L.C. within three years after you discover such defect. In no event, may any action based upon any defect in this survey be commenced more than ten years after the date of the certificate shown hereon. (13-80-105 C.R.S.)

LEGEND

- = ALIQUOT MONUMENT AS DESCRIBED
- = CALCULATED POSITION

SHEET 2 OF 2

Brian T. Brinkman—On behalf of Lat40°, Inc.
Colorado Licensed Professional Land Surveyor No. 38175
DATE: 1/15/2014
PROJECT#: 2013003



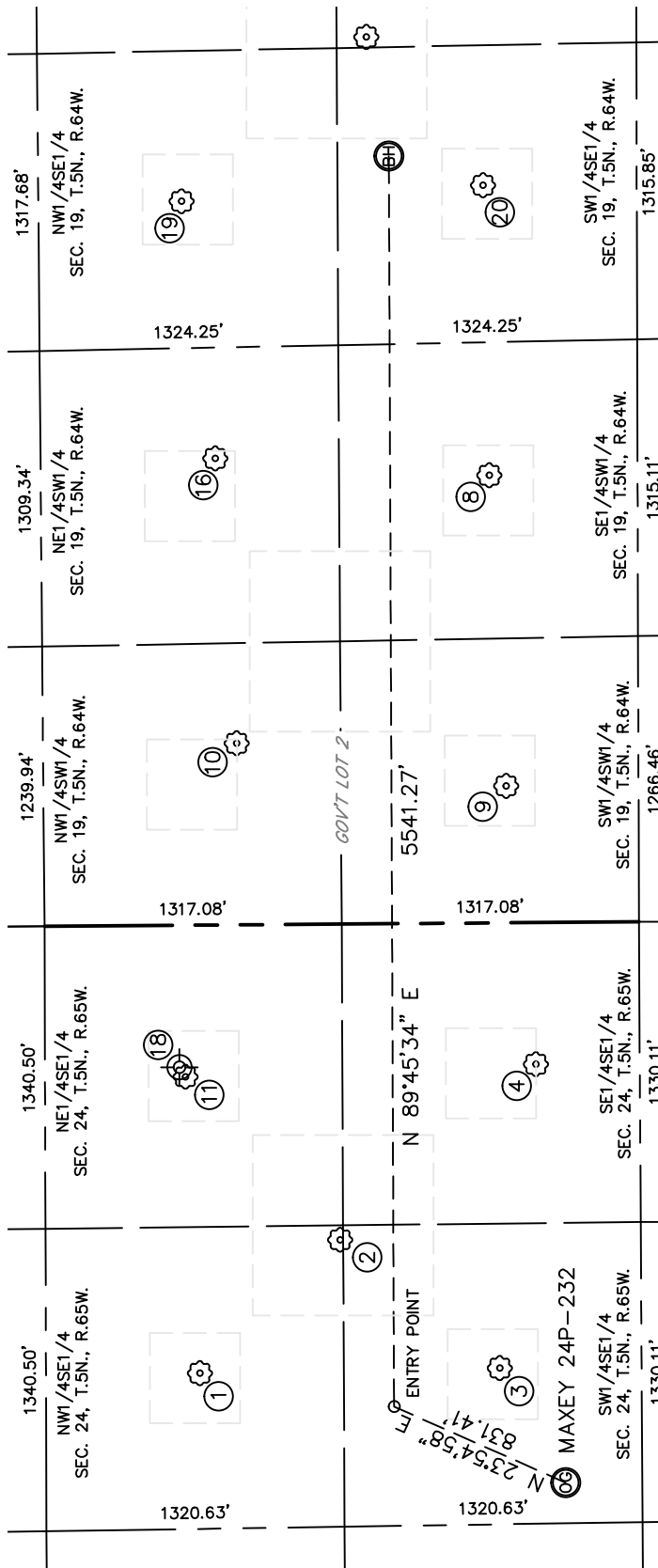


Lat40°, Inc. 1635 Foxtrail Drive, Suite 325 Loveland, CO 970-776-3321

SITE SKETCH

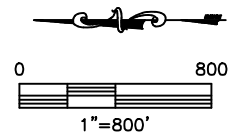
MAXEY 24P-232

SECTION: 24
TOWNSHIP: 5N
RANGE: 65W



WELL NO.	WELL NAME	SHL FOOTAGE				SHL LAT°	SHL LONG°	PDOP	ELEV (FT.)	1/4/1/4
		1958	FSL	1986	FEL					
1	MAXEY 33-24				FEL	40.38278	-104.60904	1.8	4636	NWSE
2	MAXEY 24D	1333	FSL	1399	FEL	40.38106	-104.60694	1.8	4636	NWSE
3	MAXEY 2	629	FSL	1973	FEL	40.37914	-104.60900	1.8	4635	SWSE
4	MAXEY 44-24	461	FSL	628	FEL	40.37866	-104.60418	1.8	4632	SESE
8	EMILY 24-19	658	FSL	1983	FWL	40.37916	-104.59481	2.1	4629	SESW
9	MAXEY HOFF 1	587	FSL	607	FWL	40.37899	-104.59975	2.1	4631	SWSW
10	MAXEY HOFF 2	1781	FSL	804	FWL	40.38226	-104.59903	2.0	4631	NWSW
11	MAXEY 43-24	2014	FSL	672	FEL	40.38292	-104.60432	2.0	4635	NESE
16	EMILY 1	1871	FSL	2067	FWL	40.38248	-104.59449	2.9	4628	NESW
18	MAXEY 1 (P&A)	2040	FSL	630	FEL	40.38295	-104.60417	N/A	4633	NESE
19	AUSTIN 1	2018	FSL	1984	FEL	40.38286	-104.59040	2.0	4626	NWSE
20	PHIL WILSON 19-1	681	FSL	1937	FEL	40.37919	-104.59019	2.3	4641	SWSE

NOTE: THE ABANDONED WELL DATA SHOWN IN RED ABOVE WAS OBTAINED FROM COGCC SCOUT CARDS.



DATE: 1/15/2014
PROJECT#: 2013003