

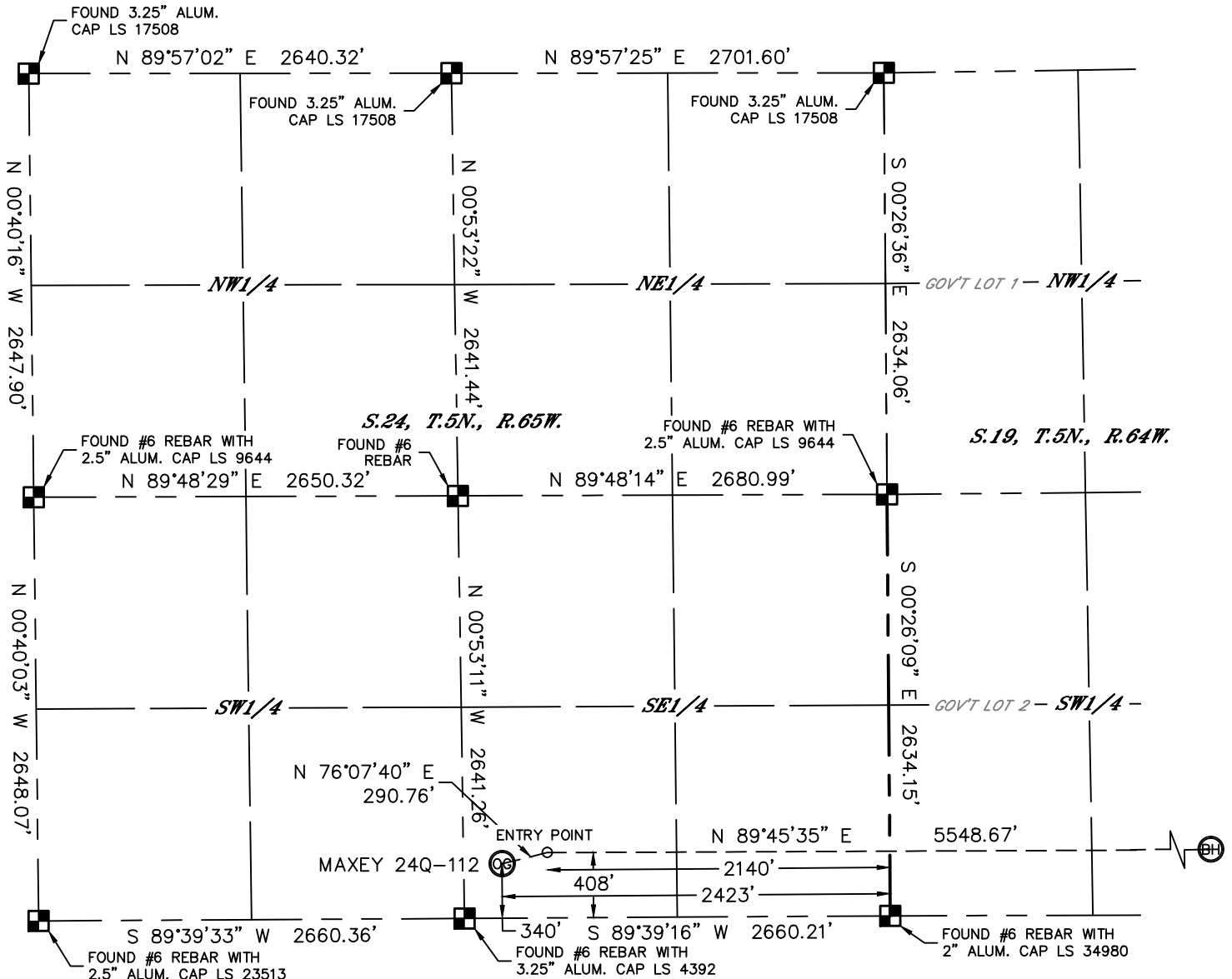


Lat40°, Inc. 1635 Foxtrail Drive, Suite 325 Loveland, CO 970-776-3321

# WELL LOCATION CERTIFICATE

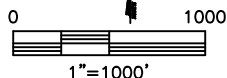
THIS MAP DOES NOT REPRESENT A BOUNDARY SURVEY

SECTION: 24  
TOWNSHIP: 5N  
RANGE: 65W



In accordance with a request from Al Bragg with PDC ENERGY Lat40°, Inc. has determined the surface location of the MAXEY 24Q-112 to be 340' from the SOUTH line and 2423' from the EAST line as measured at right angles from the section lines of Section 24, Township 5 North, Range 65 West and the bottom hole to be 408' from the SOUTH line and 1800' from the EAST line as measured at right angles from the section lines of Section 19, Township 5 North, Range 64 West of the Sixth Principal Meridian, County of Weld, State of Colorado.

I hereby state that this Well Location Certificate was prepared by me, or under my direct supervision, that the fieldwork was completed on 1/10/2013, for and on behalf of PDC ENERGY. That this is not a Land Survey Plat or an Improvement Survey Plat, and that it is not to be relied upon for establishment of fence, building, or other future improvement lines.



## NOTE:

- 1) Bearings shown are Grid Bearings of the Colorado State Plane Coordinate System, North Zone, North American Datum 1983/2007. The lineal dimensions as contained herein are based upon the "U.S. Survey Foot."
- 2) Ground elevations are based on an observed GPS elevation (NAVD 1988 DATUM).
- 3) IMPROVEMENTS: See LOCATION DRAWING for all visible improvements within 400' of disturbed area.
- 4) SURFACE USE: CROPLAND
- 5) INSTRUMENT OPERATOR: BRIAN ROTTINGHAUS

## SURFACE LOCATION

LAT: 40.37835°N  
LONG: 104.61062°W  
PDOP: 1.9  
ELEV: 4635'  
1/4,1/4: SW1/4SE1/4  
NEAREST PROPERTY LINE: 240' WEST

## ENTRY POINT

LAT: 40.37853°N  
LONG: 104.60960°W

## BOTTOM HOLE

LAT: 40.37844°N  
LONG: 104.58969°W

## NOTE

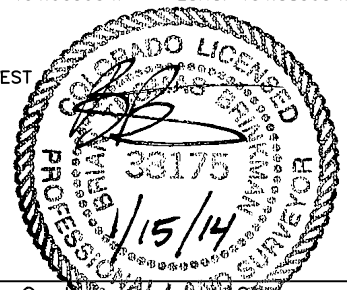
According to Colorado law, you must commence any legal action based upon any defect in this W.L.C. within three years after you discover such defect. In no event, may any action based upon any defect in this survey be commenced more than ten years after the date of the certificate shown hereon. (13-80-105 C.R.S.)

## LEGEND

- = ALIQUOT MONUMENT AS DESCRIBED
- = CALCULATED POSITION

## SHEET 1 OF 2

Brian T. Brinkman—On behalf of Lat40°, Inc.  
Colorado Licensed Professional Land Surveyor No. 38175  
DATE: 1/15/2014  
PROJECT#: 2013003



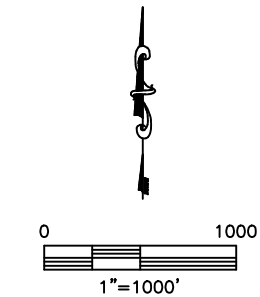
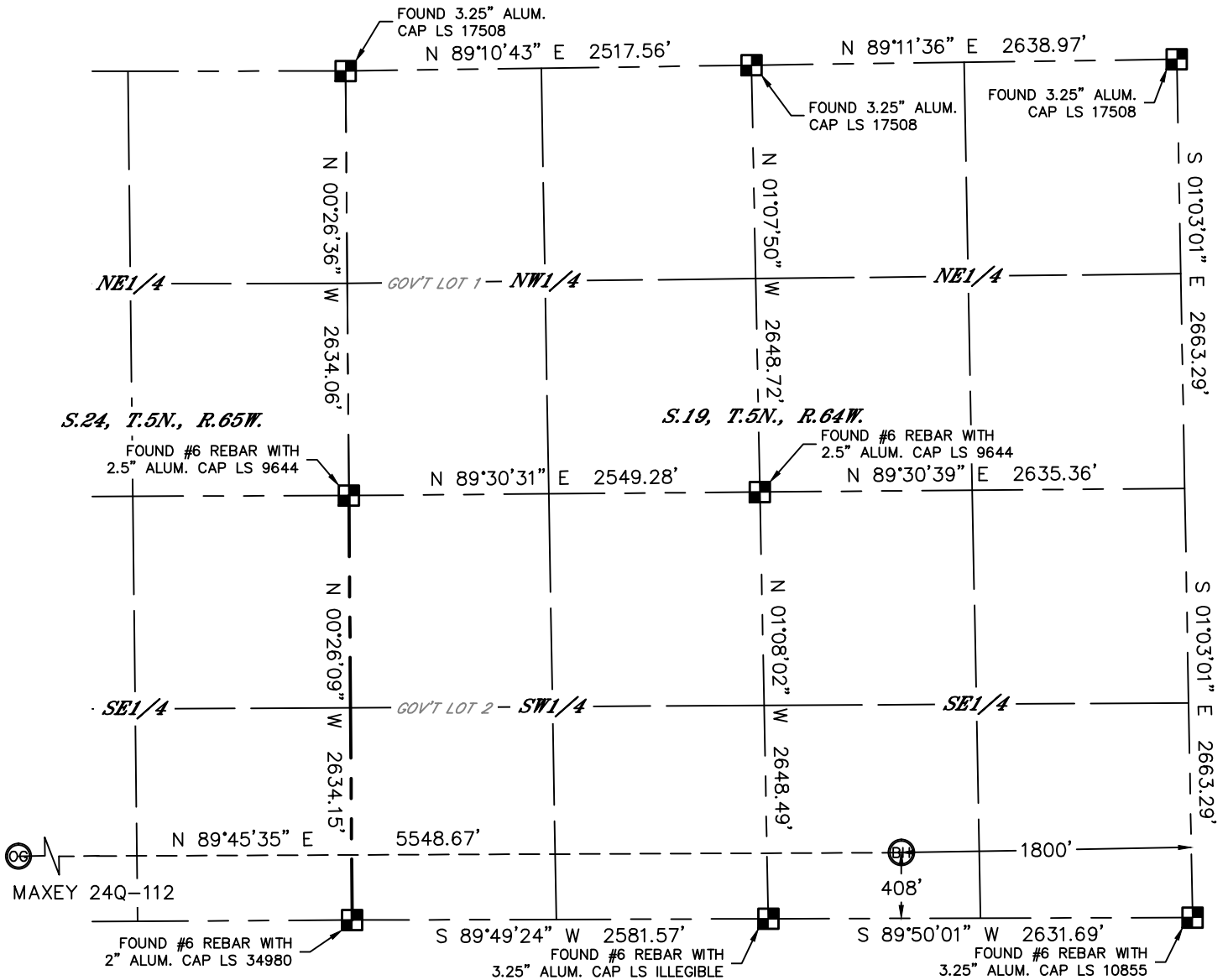


Lat40°, Inc. 1635 Foxtrail Drive, Suite 325 Loveland, CO 970-776-3321

# WELL LOCATION CERTIFICATE

THIS MAP DOES NOT REPRESENT A BOUNDARY SURVEY

SECTION: 24  
TOWNSHIP: 5N  
RANGE: 65W



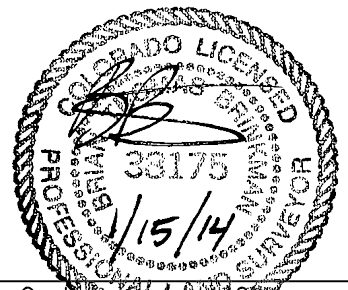
**NOTE**  
According to Colorado law, you must commence any legal action based upon any defect in this W.L.C. within three years after you discover such defect. In no event, may any action based upon any defect in this survey be commenced more than ten years after the date of the certificate shown hereon. (13-80-105 C.R.S.)

## LEGEND

- = ALIQUOT MONUMENT AS DESCRIBED
- = CALCULATED POSITION

## SHEET 2 OF 2

Brian T. Brinkman—On behalf of Lat40°, Inc.  
Colorado Licensed Professional Land Surveyor No. 38175  
DATE: 1/15/2014  
PROJECT#: 2013003



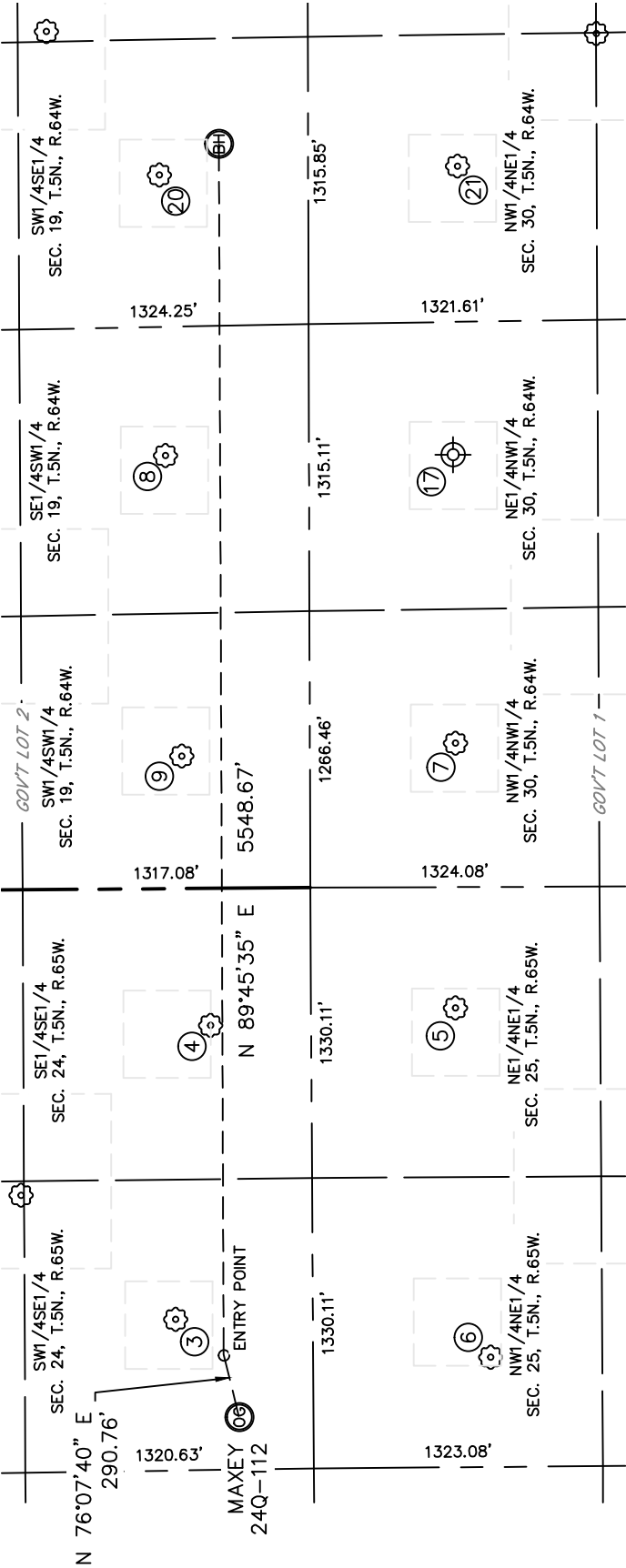


Lat40°, Inc. 1635 Foxtrail Drive, Suite 325 Loveland, CO 970-776-3321

# SITE SKETCH

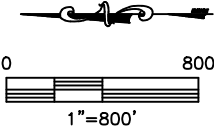
MAXEY 24Q-112

SECTION: 24  
TOWNSHIP: 5N  
RANGE: 65W



WELL NO.	WELL NAME	SHL FOOTAGE				SHL LAT°	SHL LONG°	PDOP	ELEV (FT.)	1/4/1/4
		629	FSL	1973	FEL					
3	MAXEY 2					40.37914	-104.60900	1.8	4635	SWSE
4	MAXEY 44-24	461	FSL	628	FEL	40.37866	-104.60418	1.8	4632	SESE
5	HAMILTON MELVIN UNIT 1	660	FNL	555	FEL	40.37558	-104.60393	1.9	4644	NENE
6	HAMILTON 31-25	813	FNL	2155	FEL	40.37518	-104.60968	2.0	4636	NWNE
7	P&A 11-30	666	FNL	658	FWL	40.37555	-104.59958	2.0	4640	NWNW
8	EMILY 24-19	658	FSL	1983	FWL	40.37916	-104.59481	2.1	4629	SESW
9	MAXEY HOFF 1	587	FSL	607	FWL	40.37899	-104.59975	2.1	4631	SWSW
17	LION 21-30 (P&A)	660	FNL	1980	FWL	40.37548	-104.59483	N/A	4666	NENW
20	PHIL WILSON 19-1	681	FSL	1937	FEL	40.37919	-104.59019	2.3	4641	SWSE
21	MENONI B30-2	683	FNL	1918	FEL	40.37545	-104.59010	1.8	4679	NWNE

NOTE: THE ABANDONED WELL DATA SHOWN IN RED ABOVE WAS OBTAINED FROM COGCC SCOUT CARDS.



DATE: 1/15/2014  
PROJECT#: 2013003