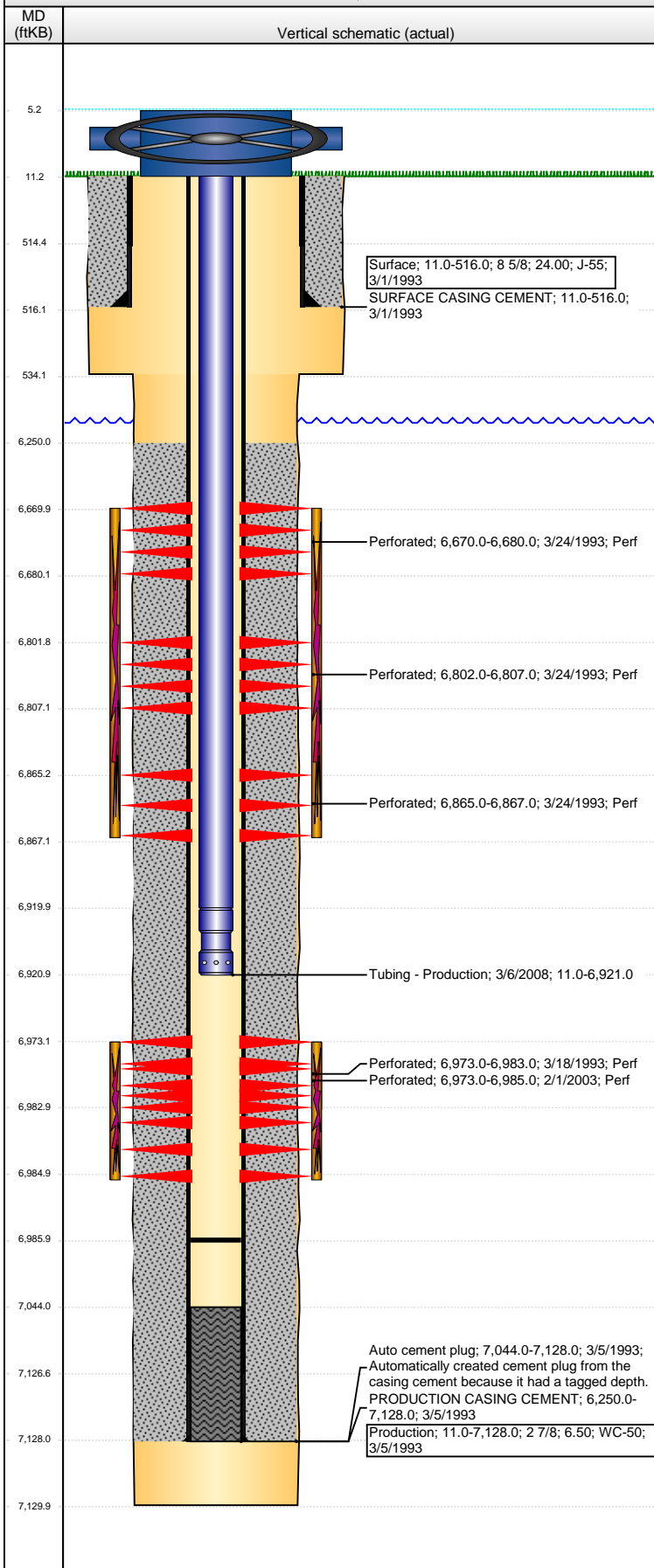


**Well Name: LORENZ FARMS 22-03B**

VERTICAL - ORIGINAL HOLE, 1/23/2014 12:51:31 PM



## Well Header

API	Business Unit	District	Well Config
05-123-16607	WATTENBERG	15	VERTICAL
Original KB Elevation (ft)	KB - GL / MSL (ftKB)	Spud Date	P & A Date
4,635.00	11.00	2/28/1993	

## Comment

tight @ 6832

## Directions To Well

RD 45 & HWY 34, S.1, W.75, SW.1 INTO

## Congressional Location

Quarter 1	Quarter 2	Quarter 3	Quarter 4	Section	Township	Twnshp N...	Range	Rng E/W Dir
		NE	NW	22	5	N	65	W

## Bottom Hole Location

North-South Distance (ft)	From N or S Line	East-West Distance (ft)	From E or W Line

## Plug Back Total Depths

Date	Depth (ftKB)	Method	Com
3/5/1993	7,095.0	CASING TALLY	LATCH DOWN COLLAR
3/18/1993	7,044.0	CASED HOLE LOG	DEPTH LOGGER ON CBL
3/6/2008	6,986.0	TAG	VERY HARD BOTTOM. THEY HAD TRIED TO CUT...

## Wellbore Sections

Section Des	Size (in)	Act Top, MD (ftKB)	Act Btm, MD (ftKB)
SURFACE	12 1/4	11.0	534.0
PRODUCTION	7 7/8	534.0	7,130.0

## Zone Statuses

Zone Name	Status Date	Status	Job
CODELL	4/2/1993	PR	DRILLING/COMPLETION - ORIGINAL, 2/28/1993 00:00
CODELL	2/9/2003	PR	RE-FRAC, 1/29/2003 00:00
NIOBRARA	4/2/1993	PR	DRILLING/COMPLETION - ORIGINAL, 2/28/1993 00:00

## Casing Strings

### Surface, 516.0ftKB

Casing Description	Run Date	OD (in)	Wt/Len (l...)	Grade	Top, MD (ft...)	MD (ftKB)
Surface	3/1/1993	8 5/8	24.00	J-55	11.0	516.0

### Production, 7,128.0ftKB

Casing Description	Run Date	OD (in)	Wt/Len (l...)	Grade	Top, MD (ft...)	MD (ftKB)
Production	3/5/1993	2 7/8	6.50	WC-50	11.0	7,128.0

## Cement

Description	Top Depth (ftKB)	Bottom Depth (ftKB)
SURFACE CASING CEMENT	11.0	516.0
Description	Top Depth (ftKB)	Bottom Depth (ftKB)
PRODUCTION CASING CEMENT	6,250.0	7,128.0

## Tubing Components

Item Des	OD (in)	Wt (lb/ft)	Grade	Jts	Len (ft)	Btm (ftKB)	Btm (TVD) (ftKB)
Tubing	1.66	2.33	J-55	210	6,908.89	6,919.9	
Notched Seating Nipple	1.66			1	1.10	6,921.0	

## Perforation Data

Zone	Bnch/St g	Entered Shot Total	Top (ftKB)	Btm (ftKB)	Date
NIOBRARA, ORIGINAL HOLE	A	8	6,670.00	6,680.00	3/24/1993
NIOBRARA, ORIGINAL HOLE	B	12	6,802.00	6,807.00	3/24/1993
NIOBRARA, ORIGINAL HOLE	C	4	6,865.00	6,867.00	3/24/1993
CODELL, ORIGINAL HOLE		52	6,973.00	6,985.00	2/1/2003
CODELL, ORIGINAL HOLE		20	6,973.00	6,983.00	3/18/1993

## Stimulations & Treatments

Date	Zone	Primary Job Type
3/20/1993	CODELL, ORIGINAL HOLE	DRILLING/COMPLETION - ORIGINAL
Technical Result	Tech Result Details	Tech Result Note

## Comment

Date	Zone	Primary Job Type
3/27/1993	NIOBRARA, ORIGINAL HOLE	DRILLING/COMPLETION - ORIGINAL
Technical Result	Tech Result Details	Tech Result Note

## Comment

**Well Name: LORENZ FARMS 22-03B**

VERTICAL - ORIGINAL HOLE, 1/23/2014 12:51:33 PM

## Stimulations & Treatments

Date 2/8/2003	Zone CODELL, ORIGINAL HOLE	Primary Job Type RE-FRAC
Technical Result	Tech Result Details	Tech Result Note
Comment		

## Other In Hole

Run Date	Des	OD (in)	Top (ftKB)	Btm (ftKB)

## Logs

Date	Type	Top, MD (ftKB)	Btm, MD (ftKB)
3/5/1993	Compensated Density	4,000.0	7,112.0
3/5/1993	Induction	516.0	7,080.0
3/18/1993	Cement Bond	6,100.0	7,039.0
10/11/2012	GYRO	9.0	6,900.0

