

# Rohn State LD09-67-1HN

**TVD**  
**2":100'**

**Company:** Noble Energy Inc  
**Well Name:** Rohn State LD09-67-1HN  
**UWI or LSD:** 05-123-37537  
**Rig Id:** H&P 273  
**State:** Colorado  
**County/Parish:** Weld  
**Country:** USA  
**Survey Company:** Ensign Directional  
**Job number:** 139452  
**Dir. Driller Days** Kody Wood  
**Dir. Driller Nights** Mike David  
**MWD/LWD Days** Brennan Knerr  
**MWD/LWD Nights** Jamey House

**Log measurements:**  
**Depth measured from:**  
**Maximum temperature:**

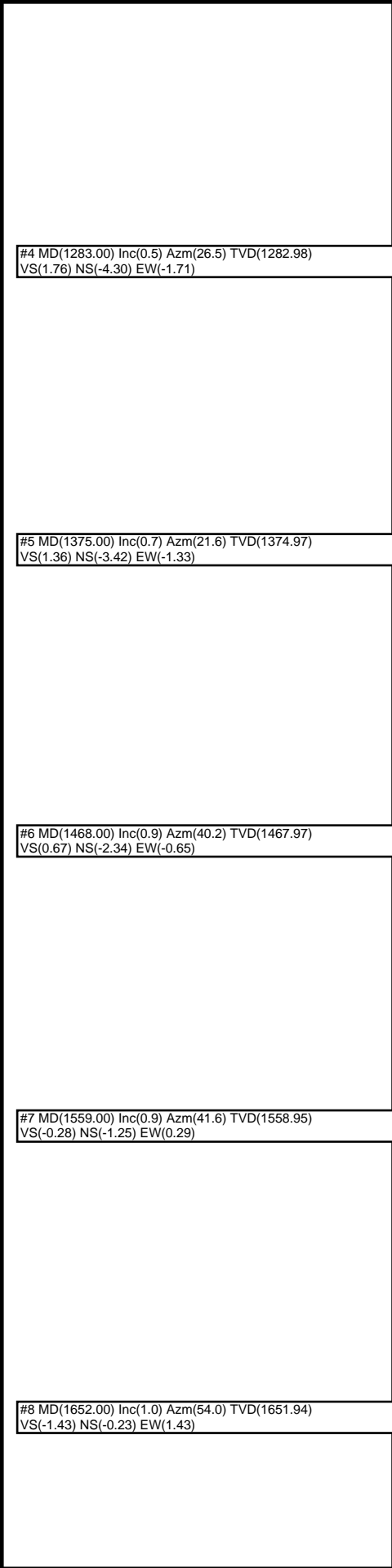
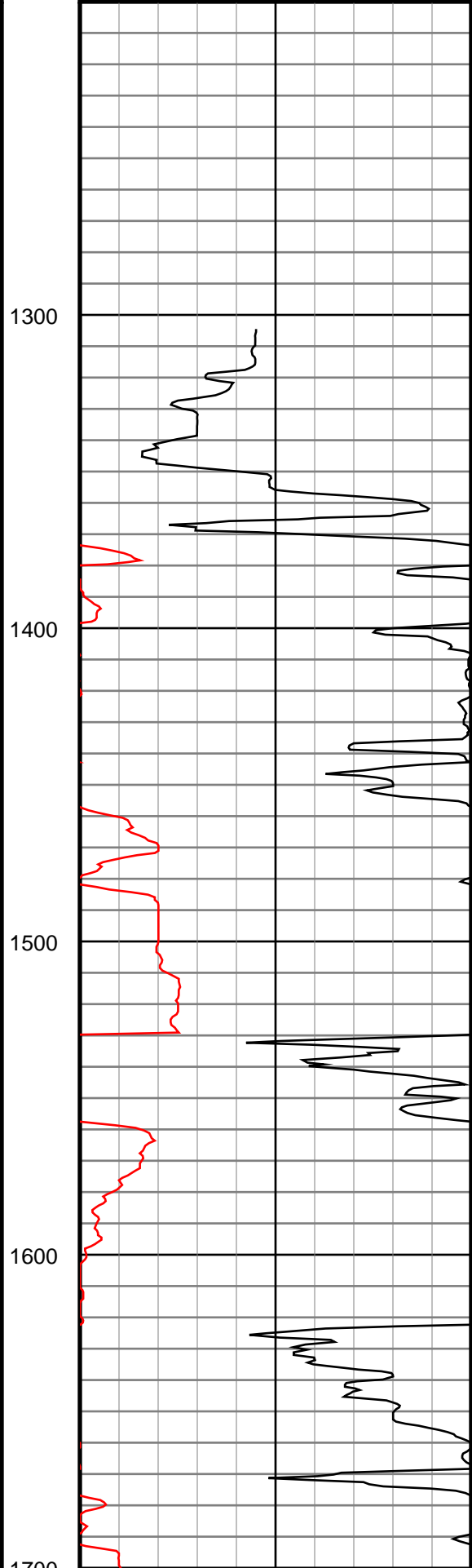
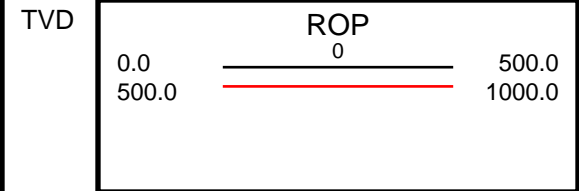
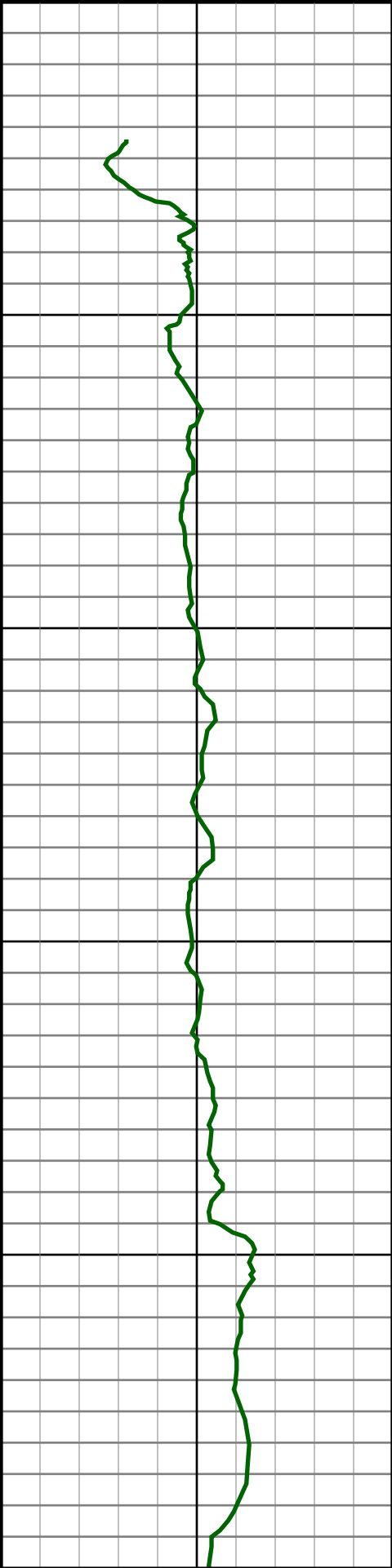
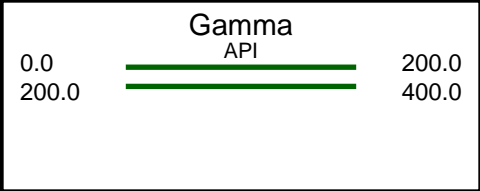
**Depth** **Date**  
**Start:** 1240 ft 10/13/2013  
**End:** 9448 ft 10/17/2013

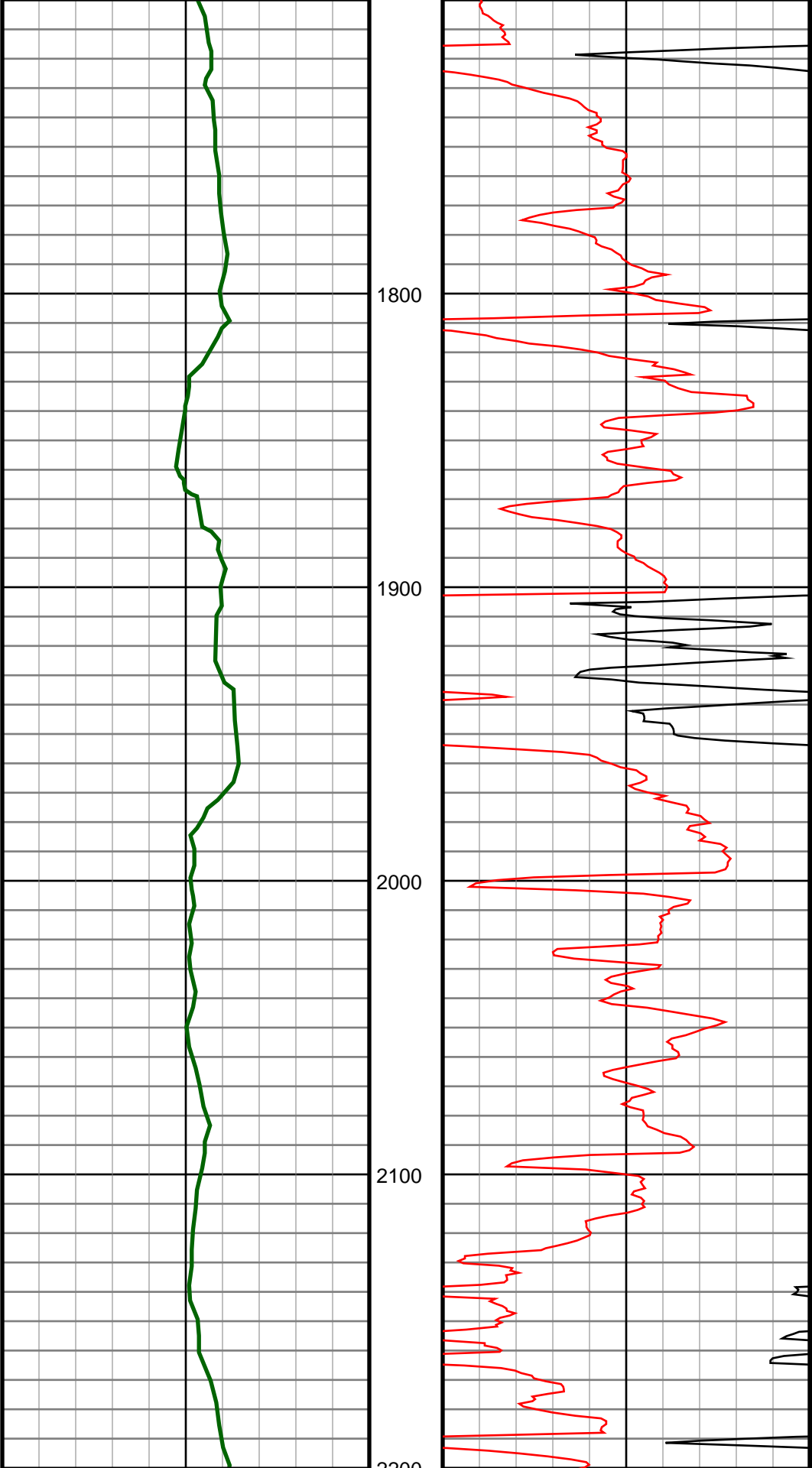
**Casing Depth Size**  
**Surface:** 1249 9.625  
**Intermediate:**

**Mud Type:**  
**Density:**  
**Viscosity:**  
**Rm:** **Rmf:** **Rmc:**

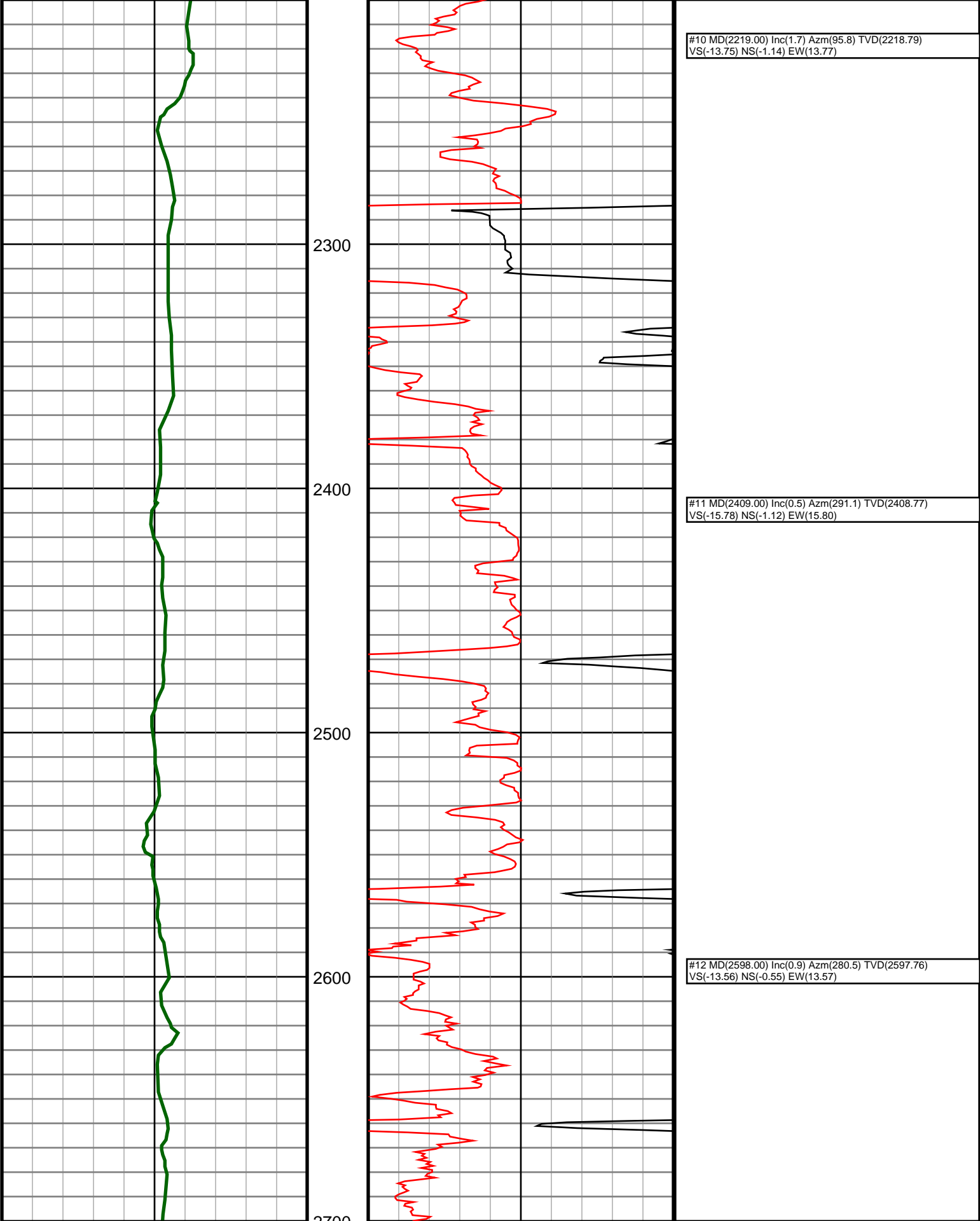
**Elevations**  
**KB:** 4736  
**GL:** 4712  
**DF:** 4736

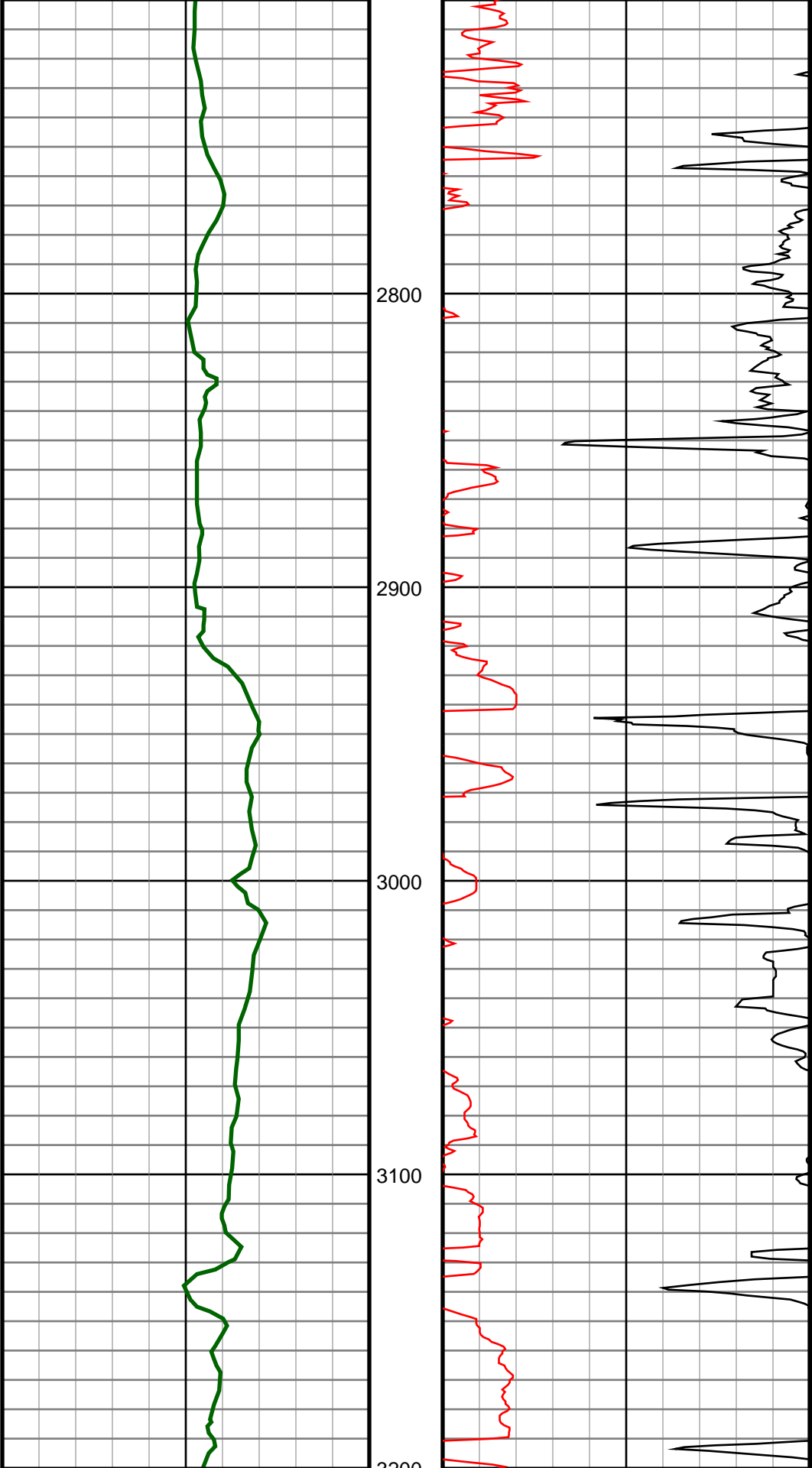
Run	Bit Size	Offsets		Depths		Dates	
		Gamma	Survey	Start	End	Start	End
1	8.75	-1.00	50.00	0	1260	10/12/2013	10/13/2013
2	8.75	62.40	57.40	1260	4933	10/13/2013	10/14/2013
3	8.75	61.46	56.46	4933	6112	10/14/2013	10/14/2013
4	6.125	71.53	66.53	6112	9448	10/16/2013	10/17/2013
5							
6							
7							
8							
9							
10							





#9 MD(1934.00) Inc(1.3) Azm(107.4) TVD(1933.89)  
VS(-6.48) NS(0.26) EW(6.48)

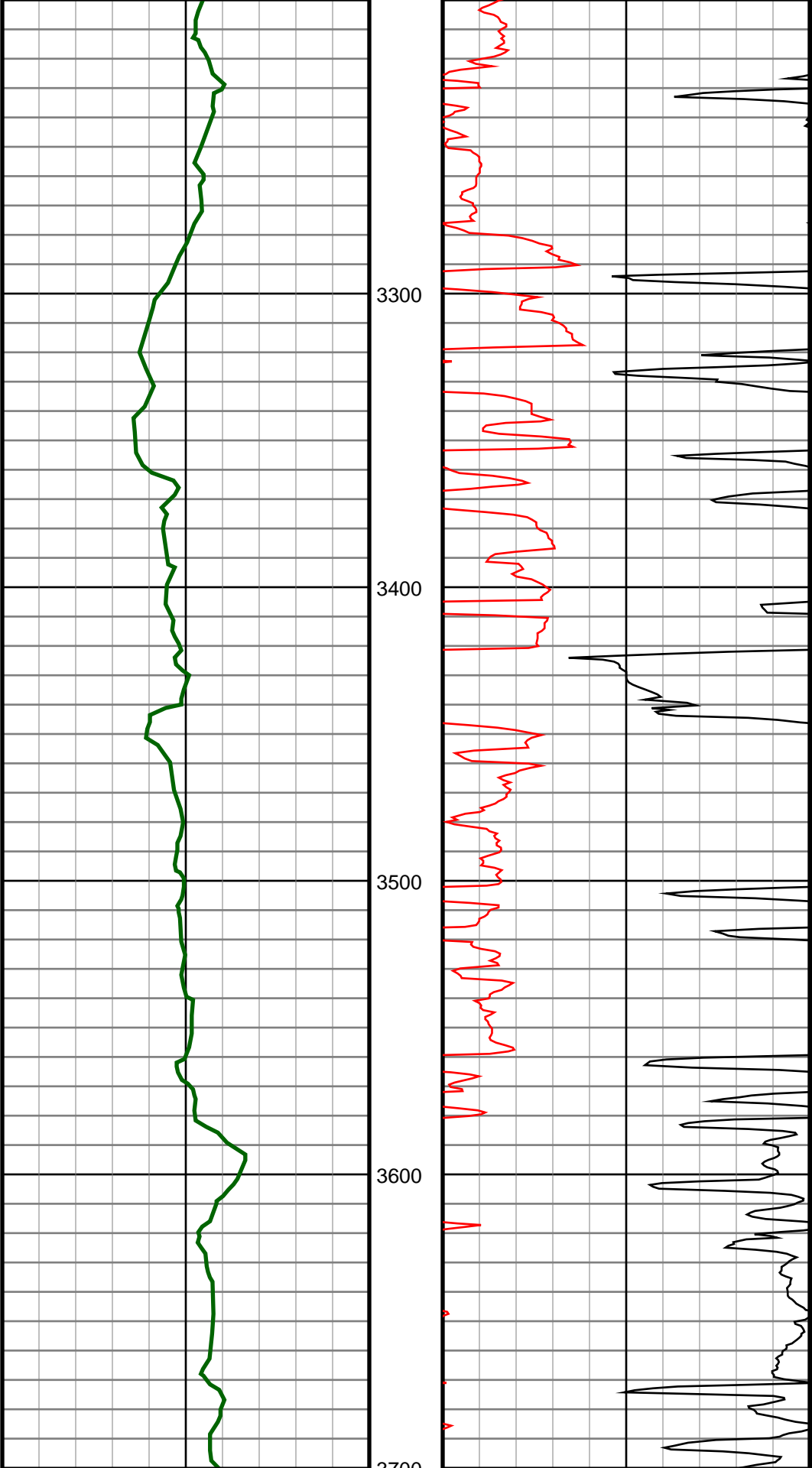




#13 MD(2788.00) Inc(0.9) Azm(297.4) TVD(2787.73)  
VS(-10.78) NS(0.40) EW(10.78)

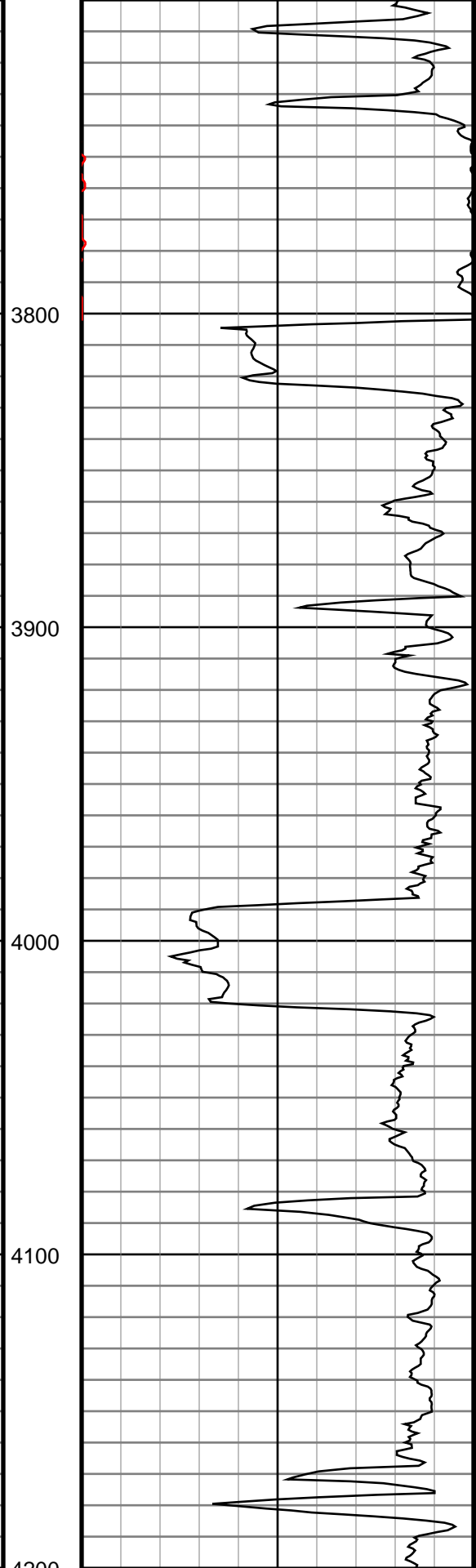
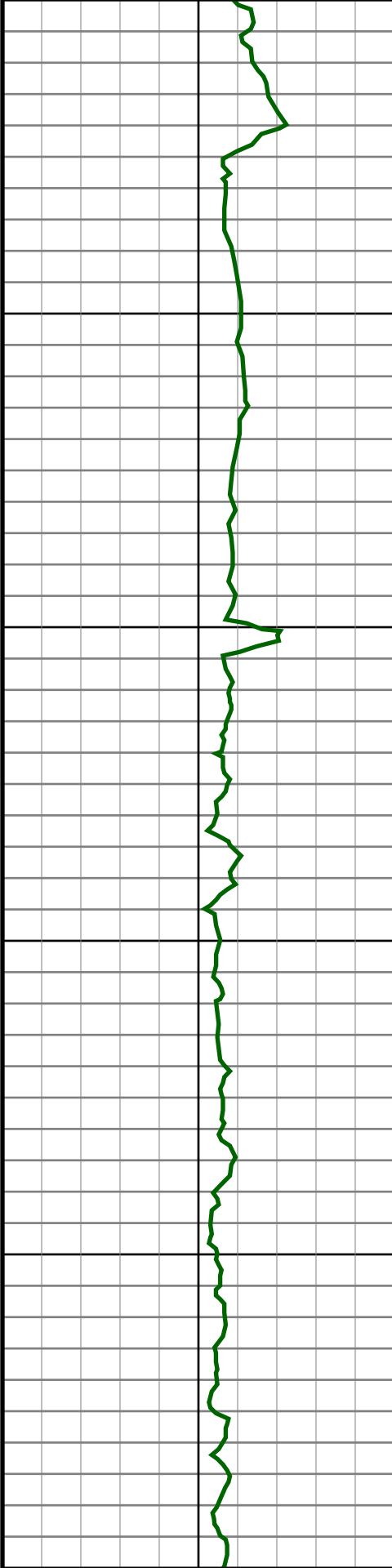
#14 MD(2978.00) Inc(1.1) Azm(346.6) TVD(2977.71)  
VS(-9.06) NS(2.86) EW(9.03)

#15 MD(3168.00) Inc(1.4) Azm(2.1) TVD(3167.66)  
VS(-8.76) NS(6.96) EW(8.69)



#16 MD(3357.00) Inc(1.6) Azm(2.8) TVD(3356.60)  
VS(-9.03) NS(11.90) EW(8.90)

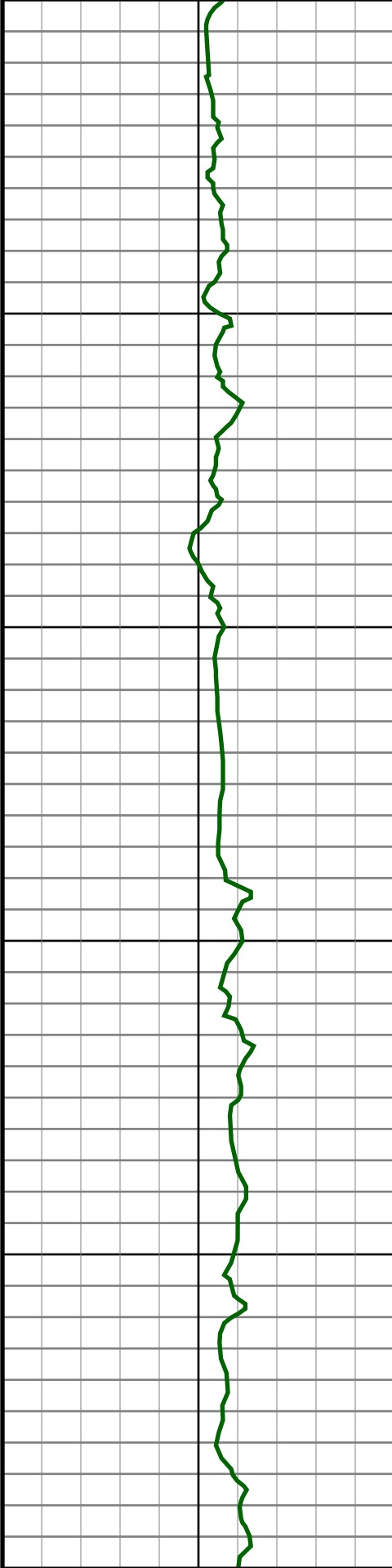
#17 MD(3547.00) Inc(0.9) Azm(56.4) TVD(3546.56)  
VS(-10.44) NS(15.38) EW(10.28)



#18 MD(3736.00) Inc(0.9) Azm(63.3) TVD(3735.54)  
VS(-13.02) NS(16.86) EW(12.84)

#19 MD(3926.00) Inc(0.5) Azm(319.6) TVD(3925.53)  
VS(-13.83) NS(18.17) EW(13.64)

#20 MD(4116.00) Inc(1.1) Azm(249.2) TVD(4115.51)  
VS(-11.58) NS(18.15) EW(11.39)



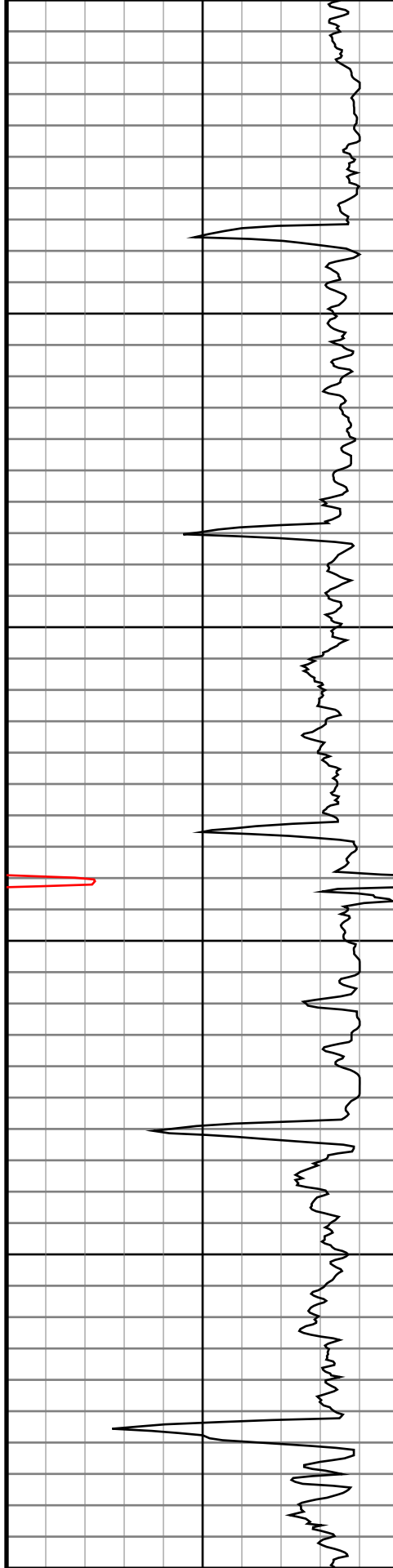
4300

4400

4500

4600

4700

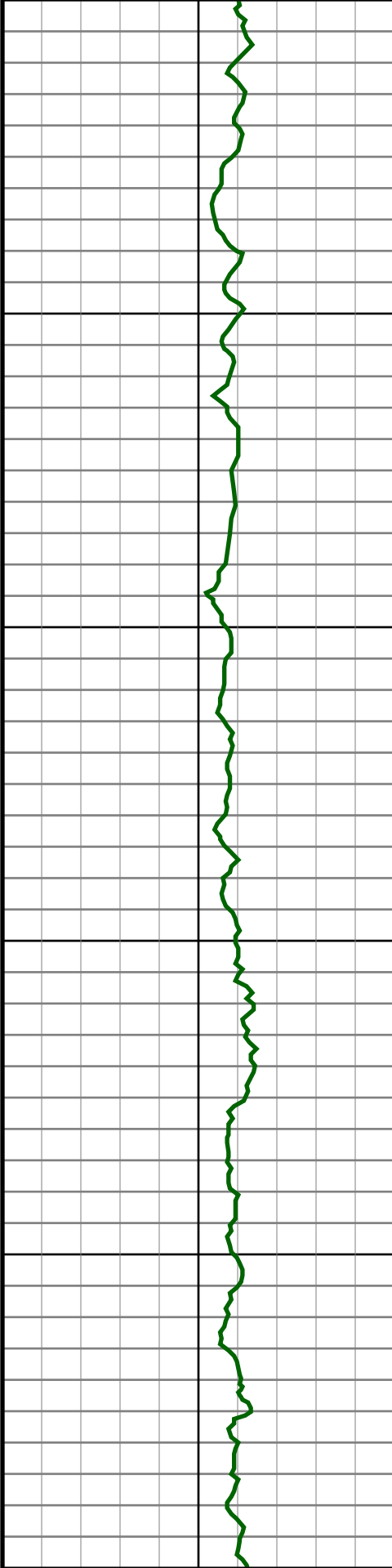


#21 MD(4305.00) Inc(0.4) Azm(225.7) TVD(4304.49)  
VS(-9.40) NS(17.05) EW(9.23)

#22 MD(4495.00) Inc(0.6) Azm(220.6) TVD(4494.49)  
VS(-8.27) NS(15.83) EW(8.10)

#23 MD(4684.00) Inc(1.1) Azm(287.0) TVD(4683.47)  
VS(-5.89) NS(15.61) EW(5.72)





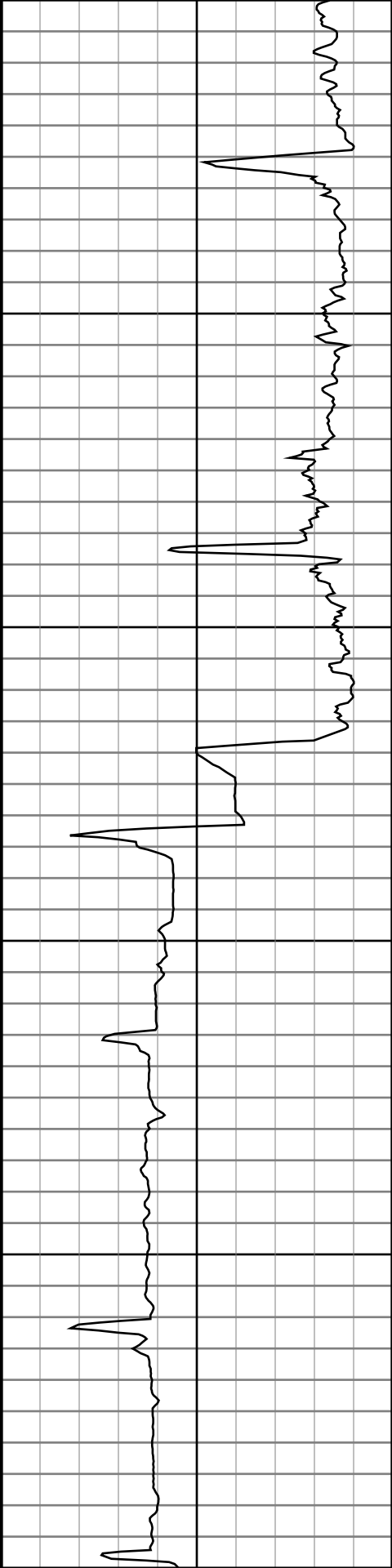
4800

4900

5000

5100

5200



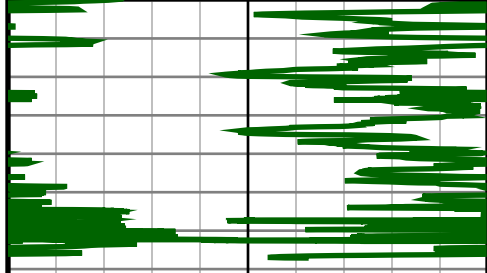
#24 MD(4874.00) Inc(2.0) Azm(276.1) TVD(4873.40)  
VS(-0.86) NS(16.49) EW(0.68)

#25 MD(4970.00) Inc(3.7) Azm(275.4) TVD(4969.27)  
VS(3.89) NS(16.96) EW(-4.07)

#26 MD(5065.00) Inc(13.3) Azm(268.6) TVD(5063.12)  
VS(17.90) NS(16.98) EW(-18.08)

#27 MD(5160.00) Inc(22.3) Azm(264.0) TVD(5153.49)  
VS(46.83) NS(14.83) EW(-46.99)





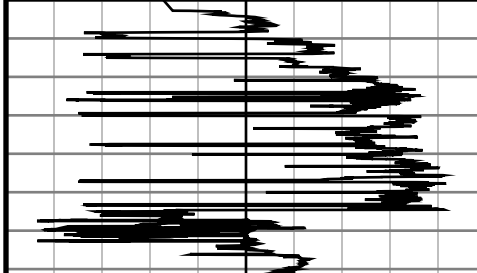
Gamma  
API

0.0

200.0

200.0

400.0



ROP

0

0.0

500.0

500.0

1000.0

#38 MD(6250.00) Inc(85.9) Azm(269.6) TVD(5709.90)  
VS(903.02) NS(-13.79) EW(-902.93)

#42 MD(6627.00) Inc(89.3) Azm(269.5) TVD(5724.35)  
VS(1279.72) NS(-17.49) EW(-1279.61)

#51 MD(7481.00) Inc(87.2) Azm(272.3) TVD(5734.52)  
VS(2133.22) NS(-9.25) EW(-2133.24)

#55 MD(7861.00) Inc(88.2) Azm(268.9) TVD(5747.62)  
VS(2512.87) NS(-5.28) EW(-2512.95)

#58 MD(8188.00) Inc(88.3) Azm(270.9) TVD(5759.97)  
9448.0:Bit Projection @9448' INC: 86.4 AZM: 270.9  
TVD: 5771.71 VS: 4098.16

#12 MD(5446.00) Inc(86.4) Azm(270.9) TVD(5771.71)  
VS(1098.16) NS(-11.06) EW(-1097.06)