

Rohn State LD09-67-1HN

MD
2":100'

Company: Noble Energy Inc
Well Name: Rohn State LD09-67-1HN
UWI or LSD: 05-123-37537
Rig Id: H&P 273
State: Colorado
County/Parish: Weld
Country: USA
Survey Company: Ensign Directional
Job number: 139452
Dir. Driller Days Kody Wood
Dir. Driller Nights Mike David
MWD/LWD Days Brennan Knerr
MWD/LWD Nights Jamey House

Log measurements:
Depth measured from:
Maximum temperature:

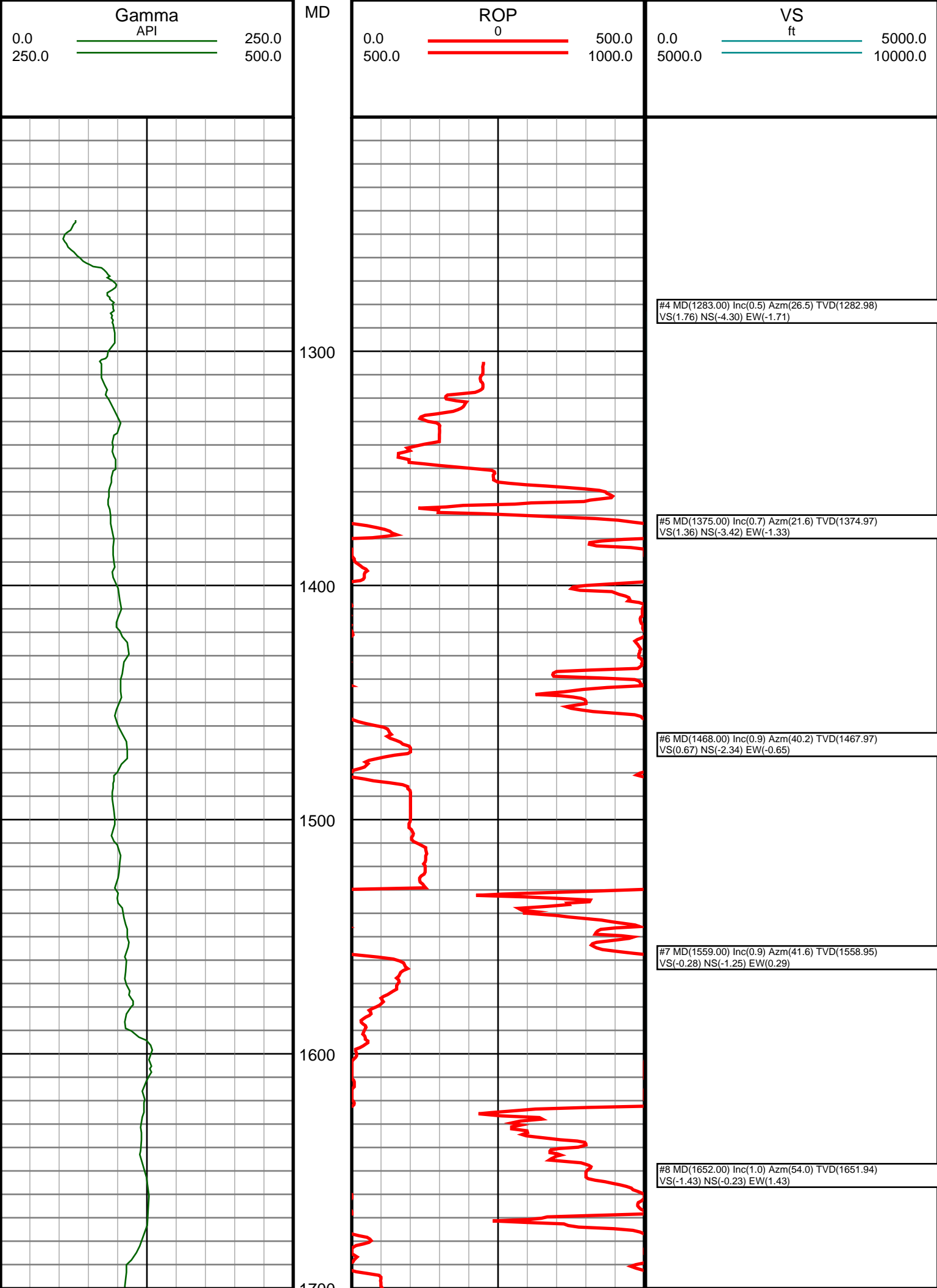
Depth **Date**
Start: 1240 ft 10/13/2013
End: 9448 ft 10/17/2013

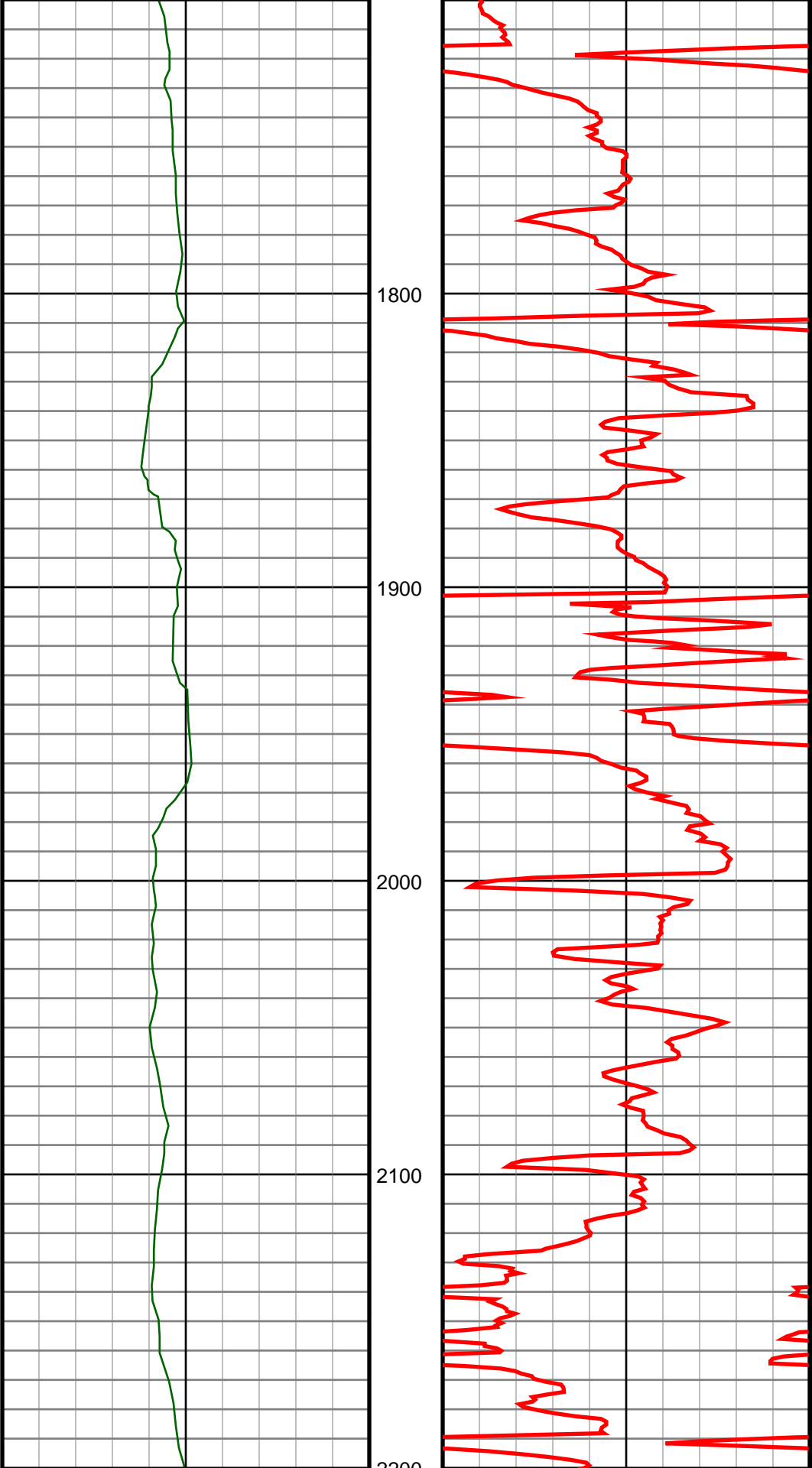
Casing Depth Size
Surface: 1249 9.625
Intermediate:

Mud Type:
Density:
Viscosity:
Rm: **Rmf:** **Rmc:**

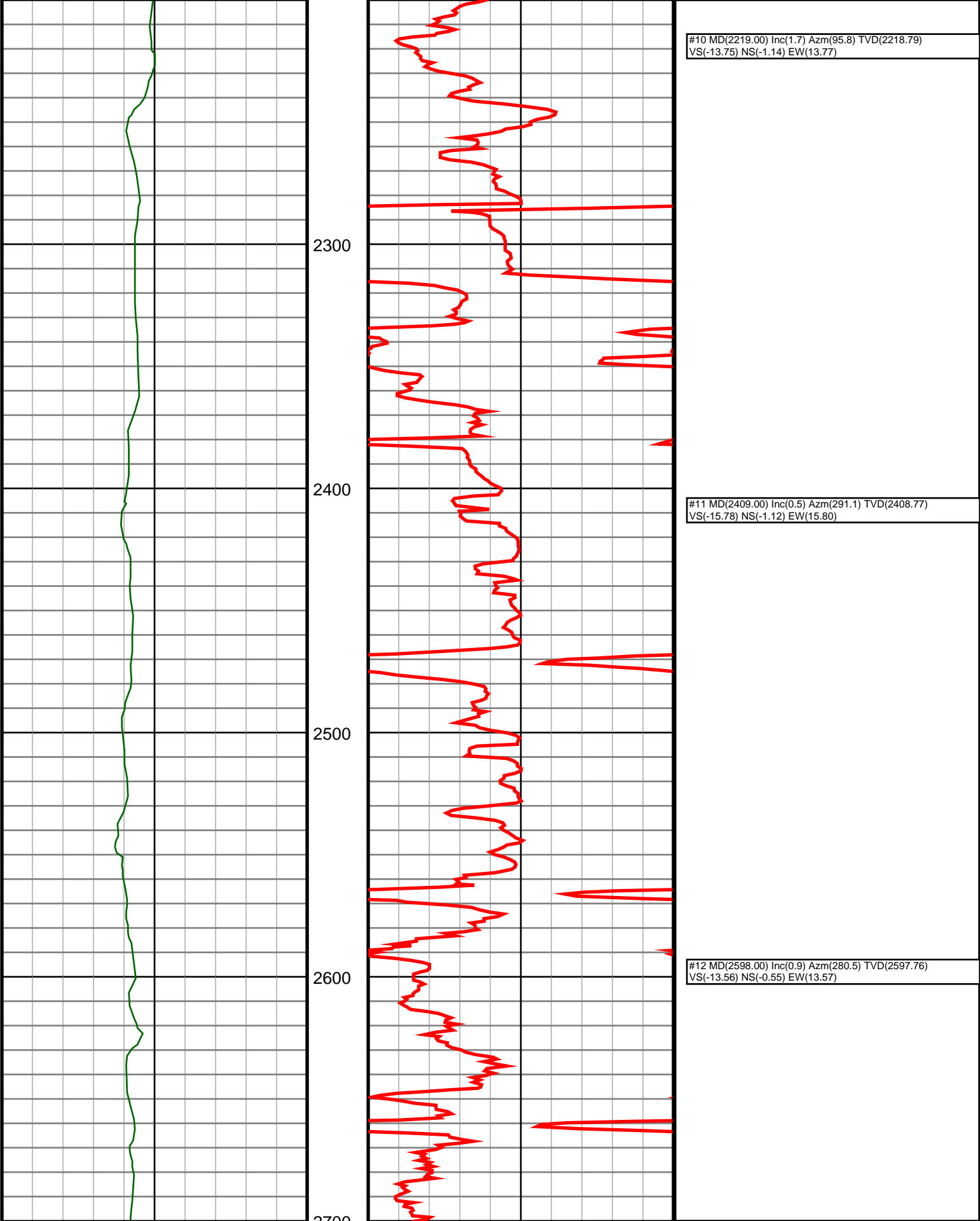
Elevations
KB: 4736
GL: 4712
DF: 4736

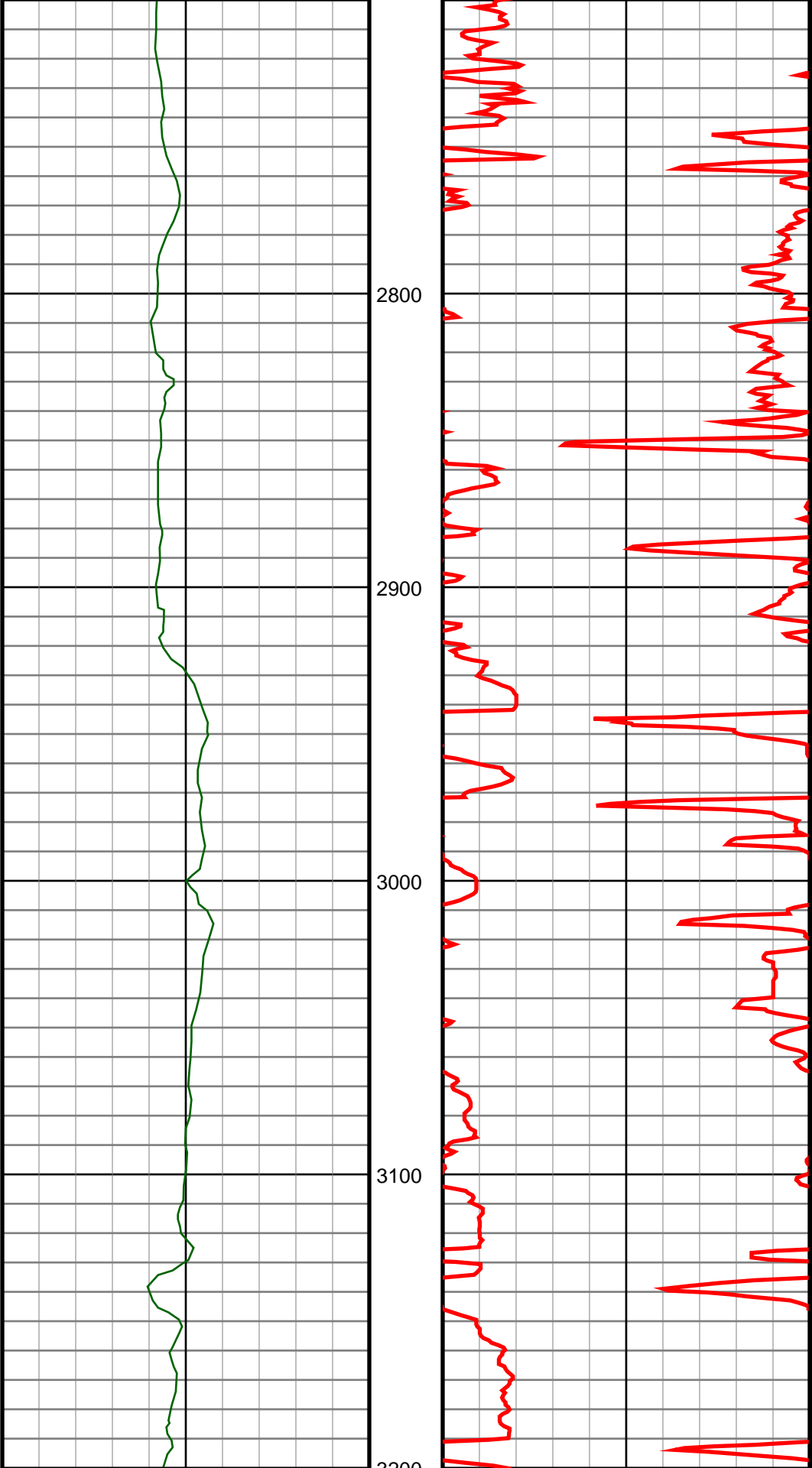
Run	Bit Size	Offsets Gamma Survey	Start	Depths End	Start	Dates End
1	8.75	-1.00	50.00	0	1260	10/12/2013 10/13/2013
2	8.75	62.40	57.40	1260	4933	10/13/2013 10/14/2013
3	8.75	61.46	56.46	4933	6112	10/14/2013 10/14/2013
4	6.125	71.53	66.53	6112	9448	10/16/2013 10/17/2013
5						
6						
7						
8						
9						
10						





#9 MD(1934.00) Inc(1.3) Azm(107.4) TVD(1933.89)
VS(-6.48) NS(0.26) EW(6.48)

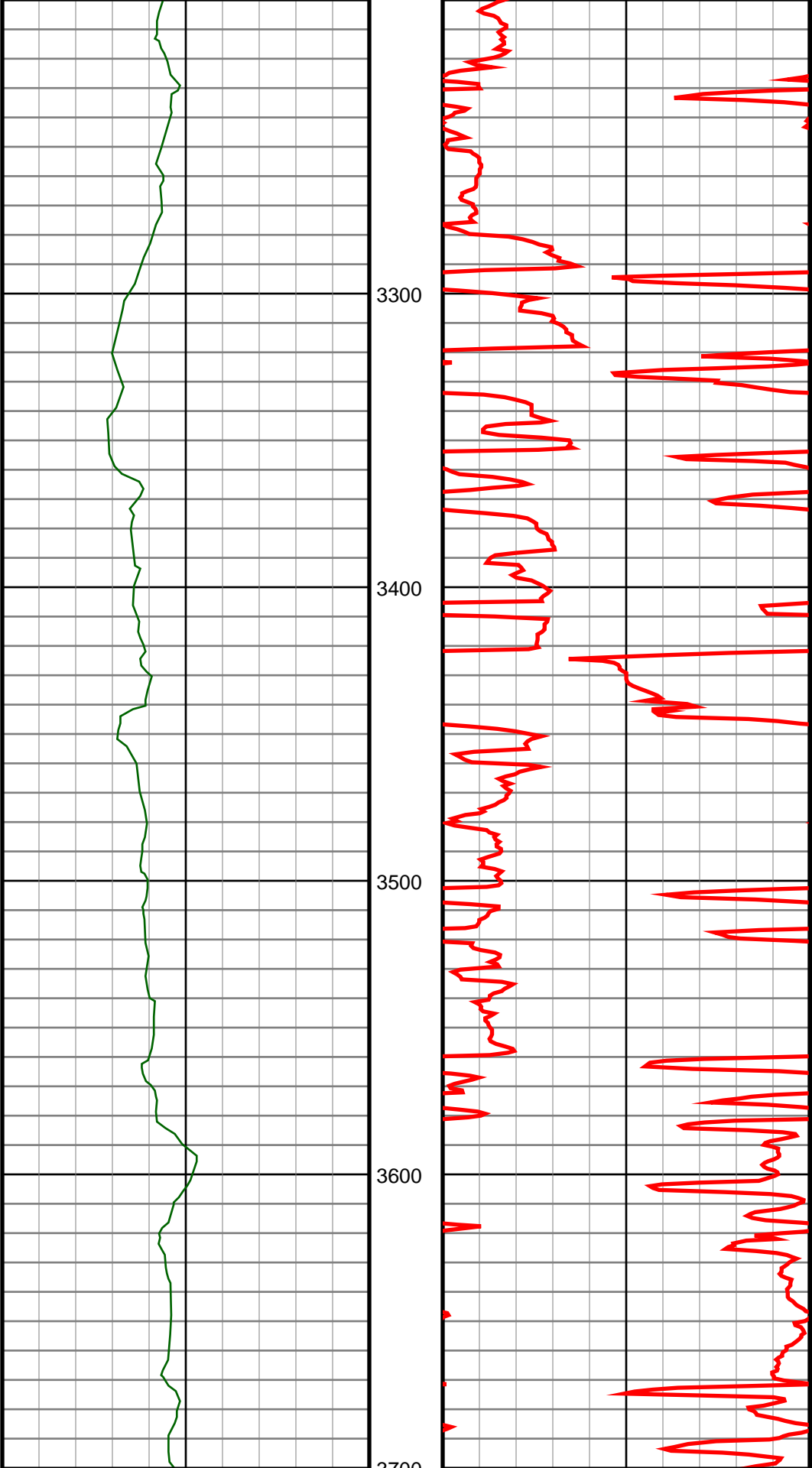




#13 MD(2788.00) Inc(0.9) Azm(297.4) TVD(2787.73)
VS(-10.78) NS(0.40) EW(10.78)

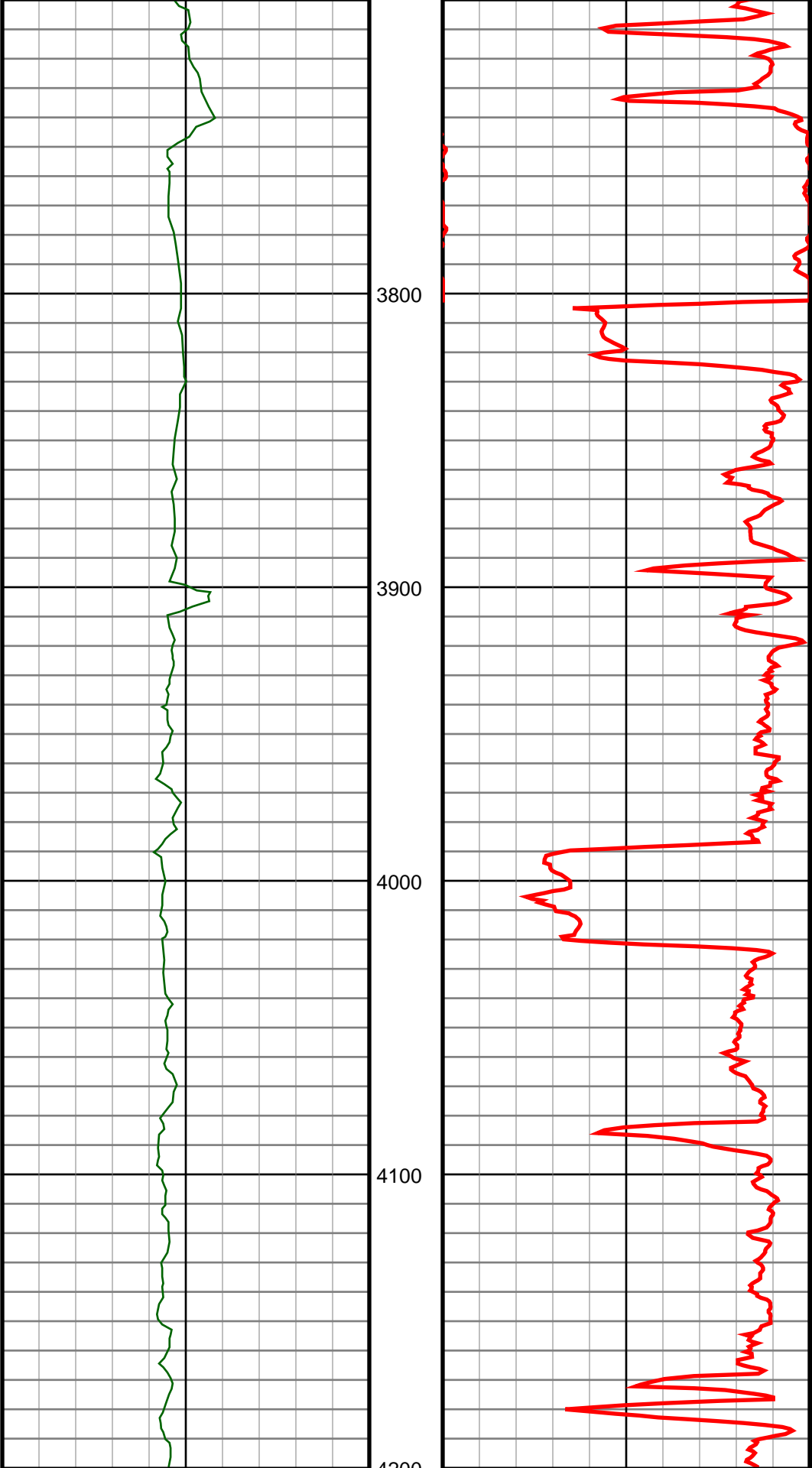
#14 MD(2978.00) Inc(1.1) Azm(346.6) TVD(2977.71)
VS(-9.06) NS(2.86) EW(9.03)

#15 MD(3168.00) Inc(1.4) Azm(2.1) TVD(3167.66)
VS(-8.76) NS(6.96) EW(8.69)



#16 MD(3357.00) Inc(1.6) Azm(2.8) TVD(3356.60)
VS(-9.03) NS(11.90) EW(8.90)

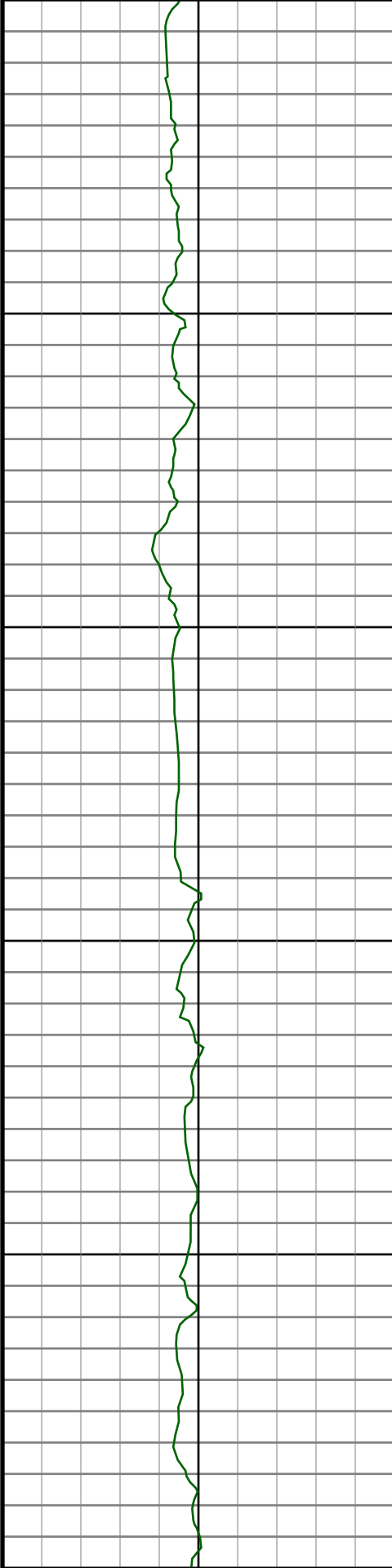
#17 MD(3547.00) Inc(0.9) Azm(56.4) TVD(3546.56)
VS(-10.44) NS(15.38) EW(10.28)



#18 MD(3736.00) Inc(0.9) Azm(63.3) TVD(3735.54)
VS(-13.02) NS(16.86) EW(12.84)

#19 MD(3926.00) Inc(0.5) Azm(319.6) TVD(3925.53)
VS(-13.83) NS(18.17) EW(13.64)

#20 MD(4116.00) Inc(1.1) Azm(249.2) TVD(4115.51)
VS(-11.58) NS(18.15) EW(11.39)



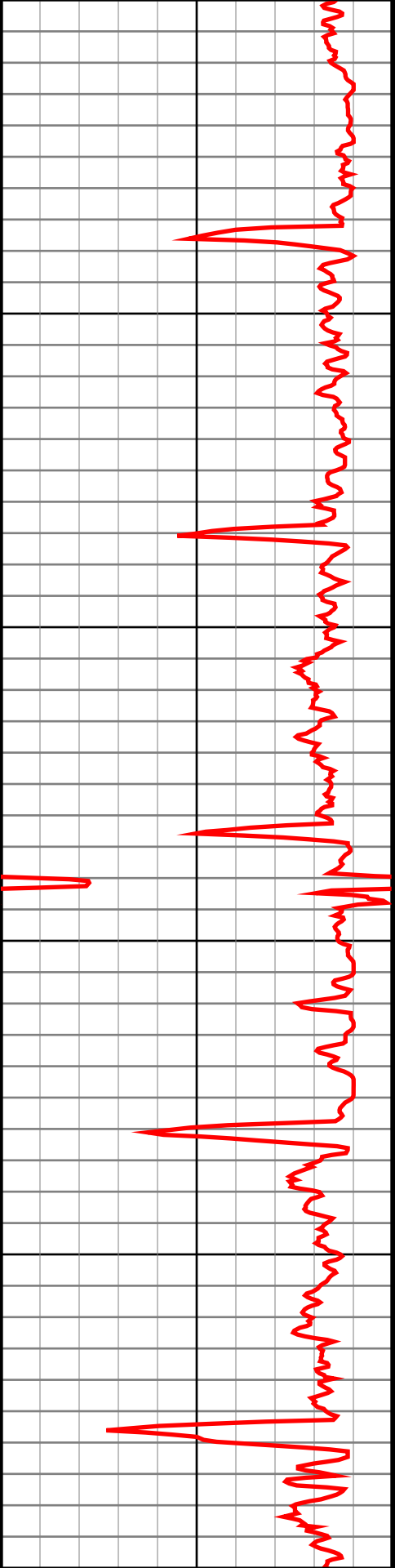
4300

4400

4500

4600

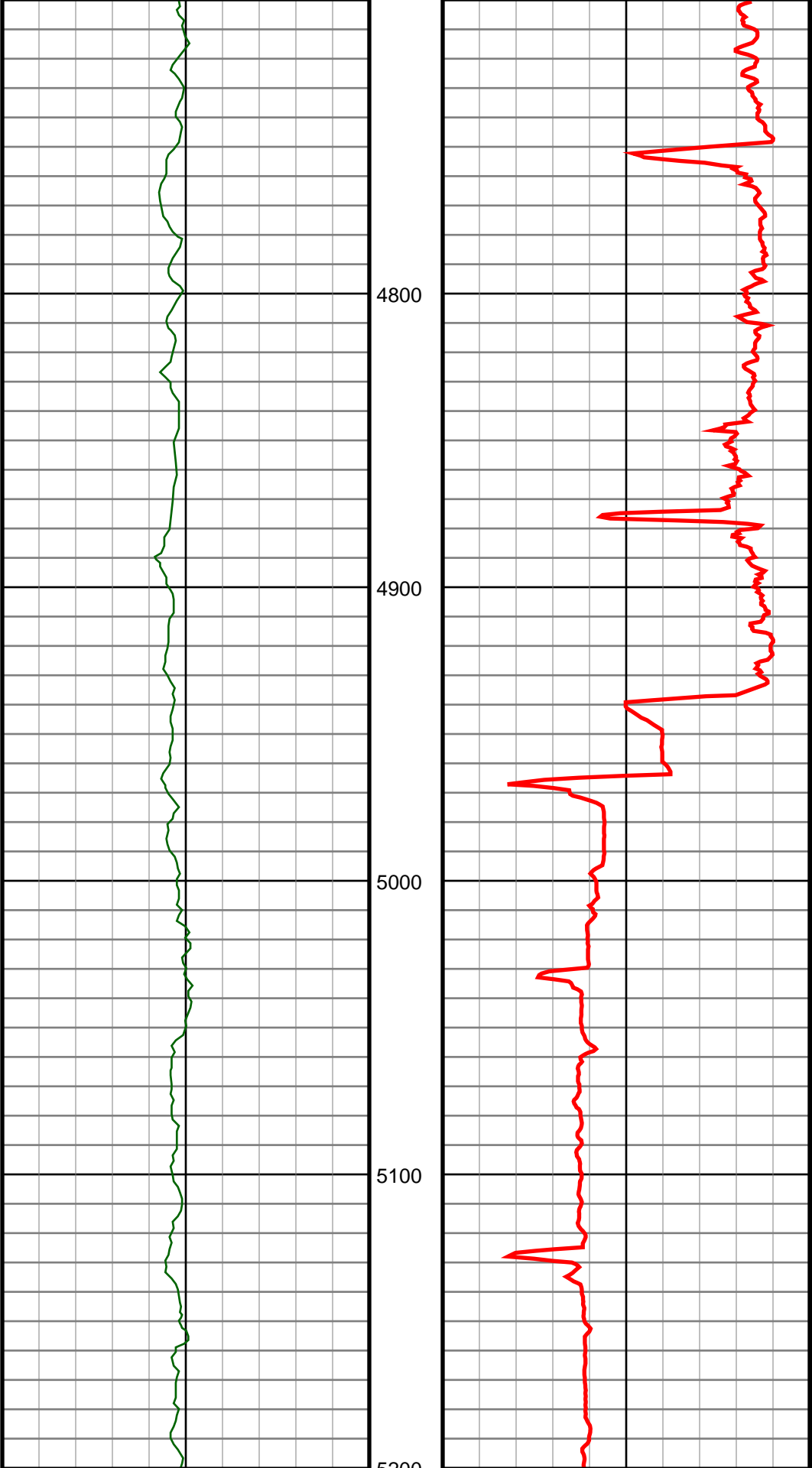
4700



#21 MD(4305.00) Inc(0.4) Azm(225.7) TVD(4304.49)
VS(-9.40) NS(17.05) EW(9.23)

#22 MD(4495.00) Inc(0.6) Azm(220.6) TVD(4494.49)
VS(-8.27) NS(15.83) EW(8.10)

#23 MD(4684.00) Inc(1.1) Azm(287.0) TVD(4683.47)
VS(-5.89) NS(15.61) EW(5.72)

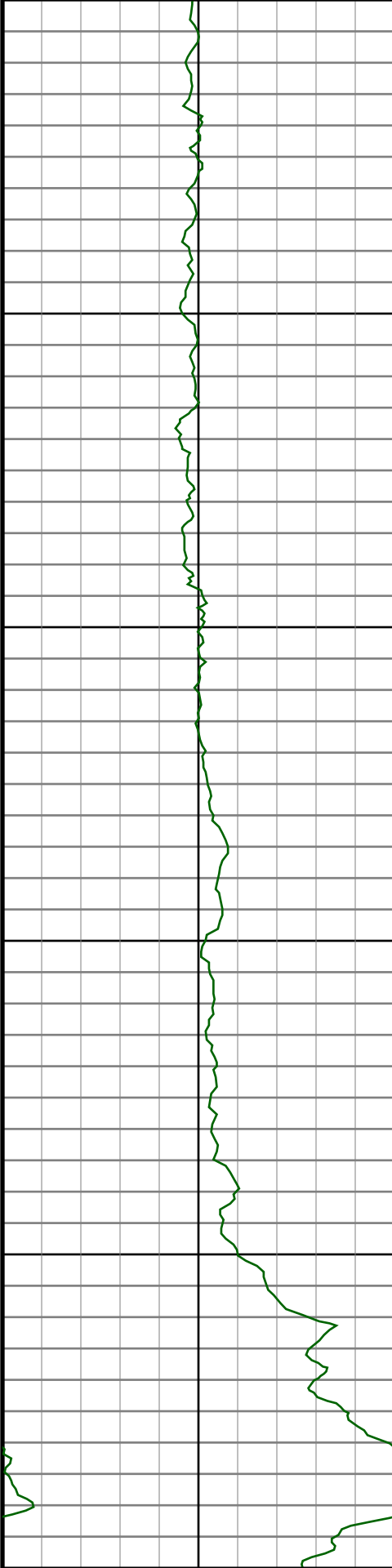


#24 MD(4874.00) Inc(2.0) Azm(276.1) TVD(4873.40)
VS(-0.86) NS(16.49) EW(0.68)

#25 MD(4970.00) Inc(3.7) Azm(275.4) TVD(4969.27)
VS(3.89) NS(16.96) EW(-4.07)

#26 MD(5065.00) Inc(13.3) Azm(268.6) TVD(5063.12)
VS(17.90) NS(16.98) EW(-18.08)

#27 MD(5160.00) Inc(22.3) Azm(264.0) TVD(5153.49)
VS(46.83) NS(14.83) EW(-46.99)



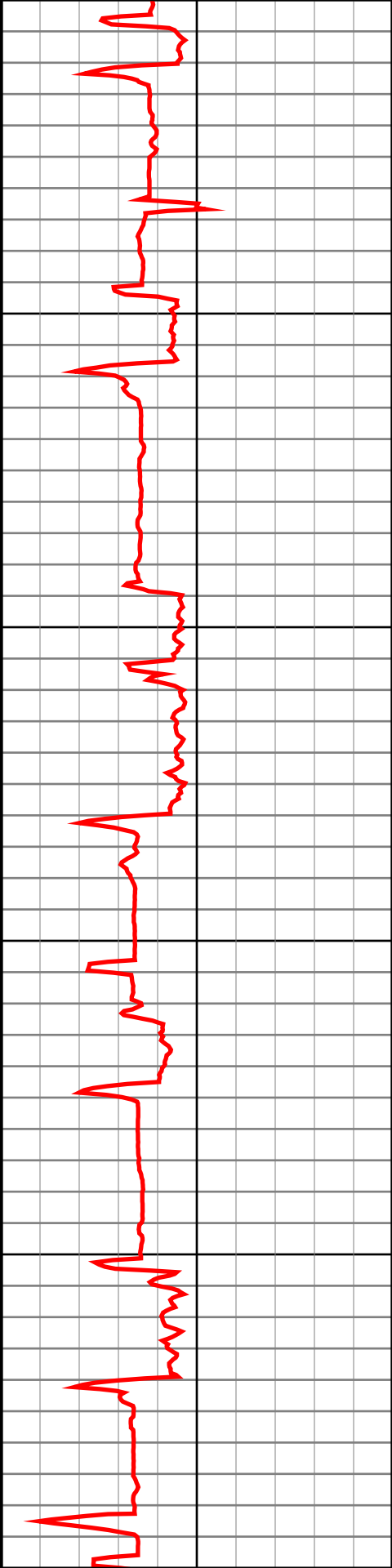
5300

5400

5500

5600

5700



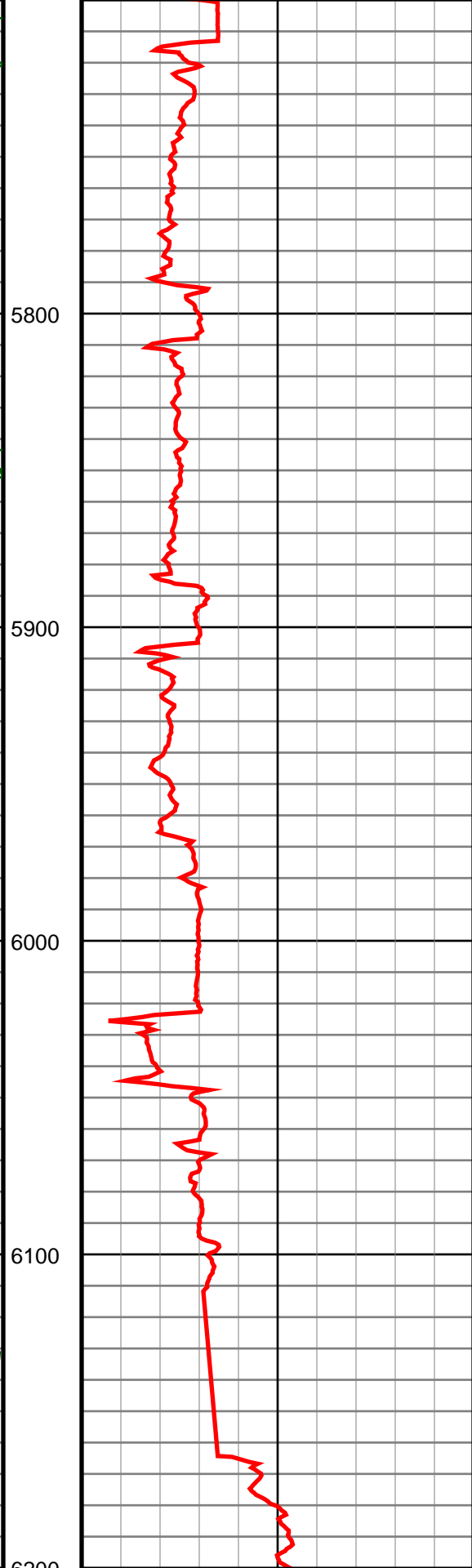
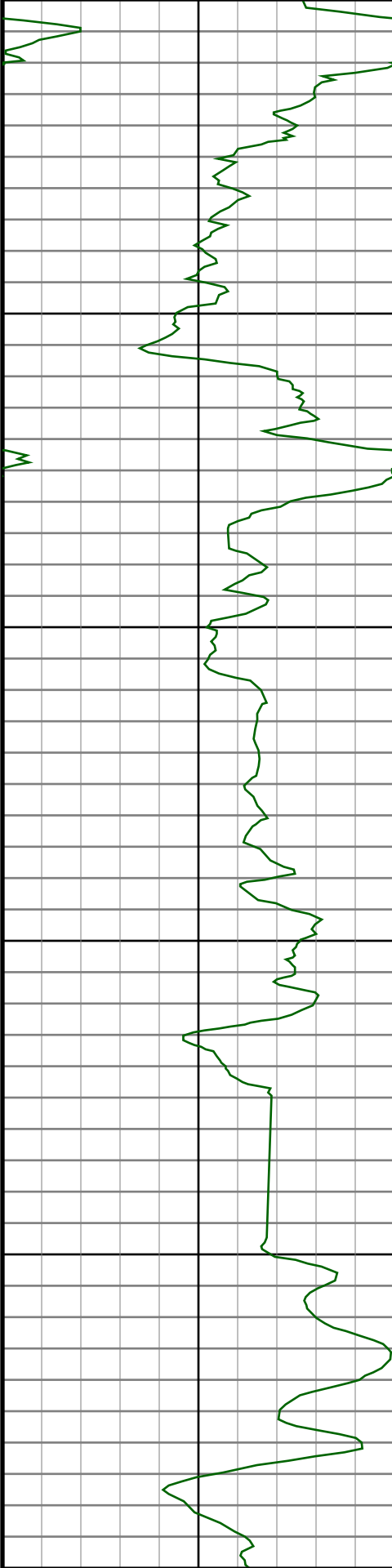
#28 MD(5254.00) Inc(29.9) Azm(266.1) TVD(5237.84)
VS(88.03) NS(11.36) EW(-88.16)

#29 MD(5349.00) Inc(36.5) Azm(269.1) TVD(5317.30)
VS(139.99) NS(9.31) EW(-140.09)

#30 MD(5444.00) Inc(38.9) Azm(269.5) TVD(5392.46)
VS(198.08) NS(6.60) EW(-198.18)

#31 MD(5539.00) Inc(43.4) Azm(266.8) TVD(5463.98)
VS(260.55) NS(6.52) EW(-260.63)

#32 MD(5634.00) Inc(48.7) Azm(266.3) TVD(5529.89)
VS(328.83) NS(2.39) EW(-328.87)



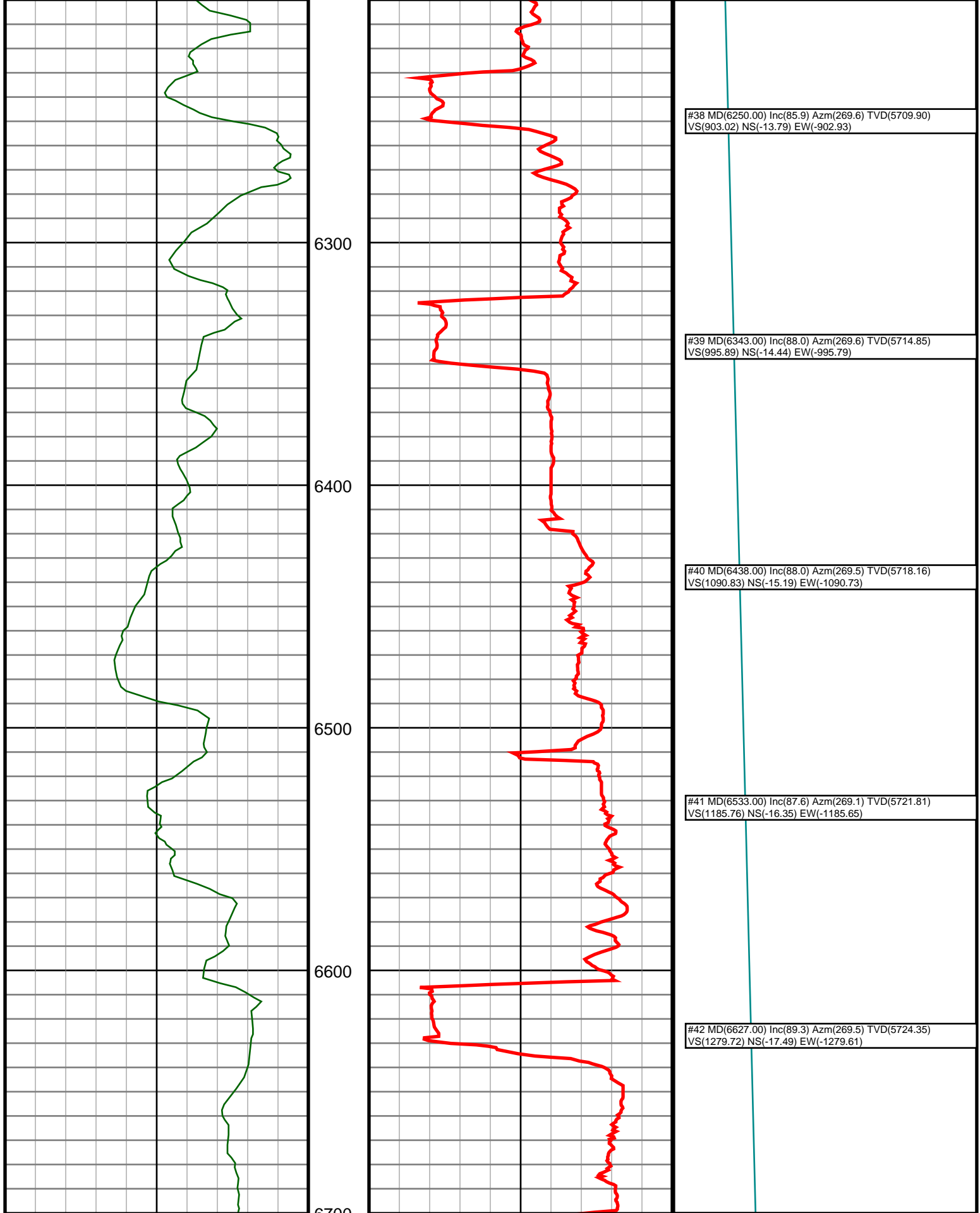
#33 MD(5728.00) Inc(55.8) Azm(266.3) TVD(5587.40)
VS(403.00) NS(-2.40) EW(-403.00)

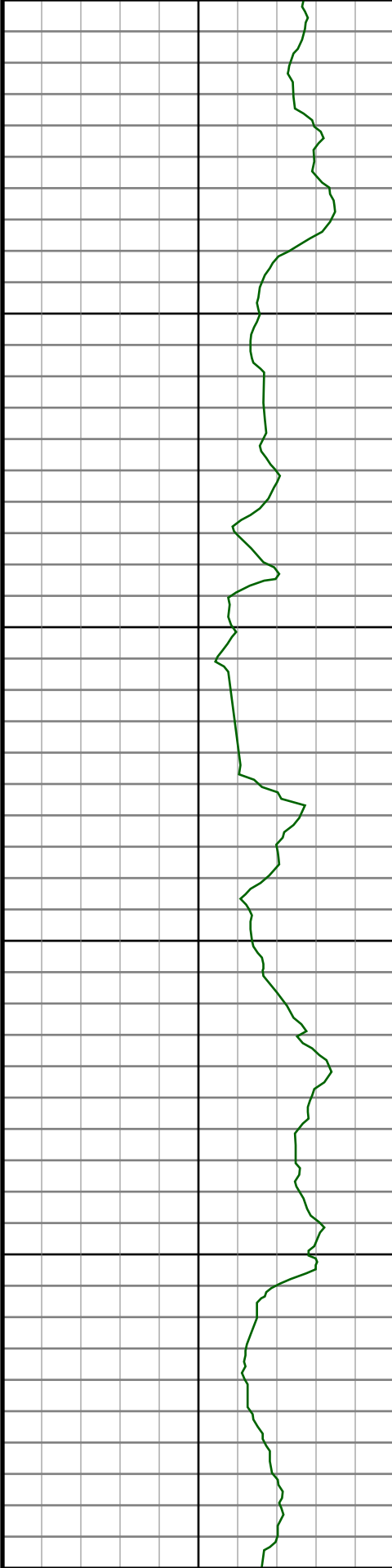
#34 MD(5823.00) Inc(64.3) Azm(267.2) TVD(5634.78)
VS(485.15) NS(-7.04) EW(-485.10)

#35 MD(5918.00) Inc(75.3) Azm(268.2) TVD(5667.54)
VS(574.13) NS(-10.58) EW(-574.05)

#36 MD(6013.00) Inc(82.5) Azm(269.8) TVD(5685.82)
VS(667.29) NS(-12.19) EW(-667.20)

#37 MD(6157.00) Inc(84.5) Azm(269.5) TVD(5702.12)
VS(810.35) NS(-13.07) EW(-810.26)





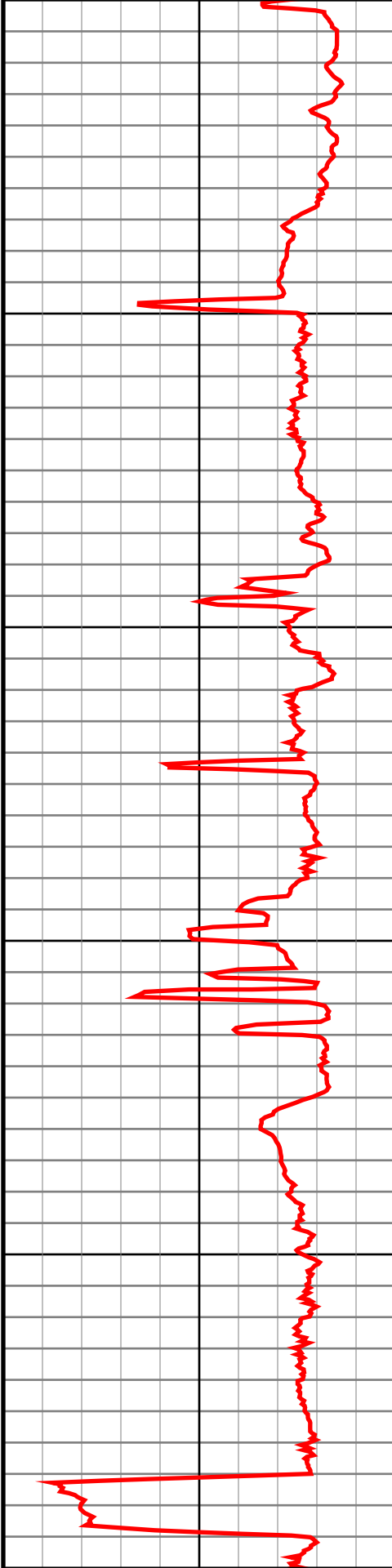
6800

6900

7000

7100

7200



#43 MD(6722.00) Inc(90.0) Azm(270.3) TVD(5724.93)
VS(1374.71) NS(-17.66) EW(-1374.60)

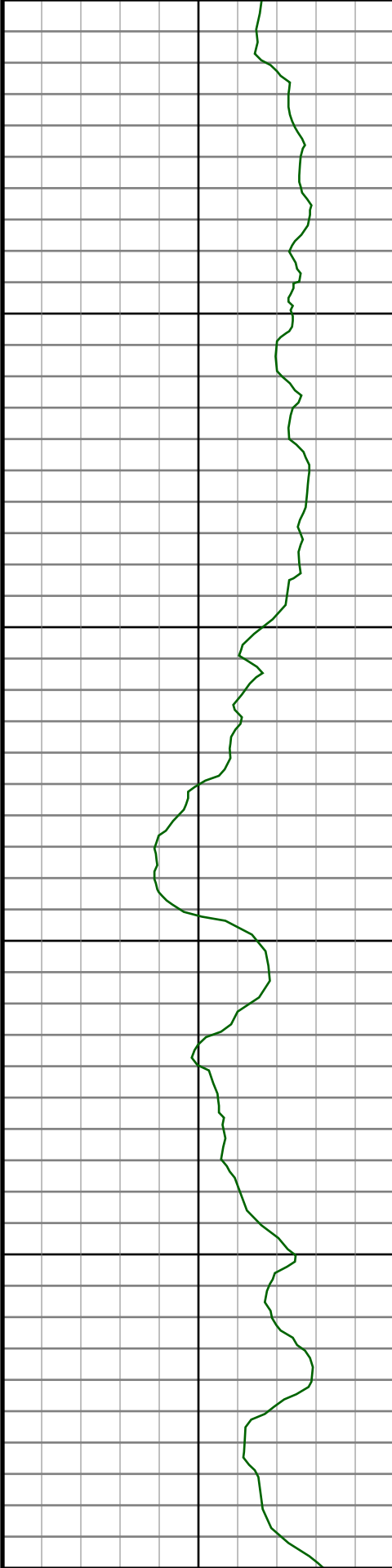
#44 MD(6817.00) Inc(89.3) Azm(269.5) TVD(5725.51)
VS(1469.71) NS(-17.83) EW(-1469.60)

#45 MD(6912.00) Inc(90.1) Azm(269.5) TVD(5726.01)
VS(1564.70) NS(-18.66) EW(-1564.59)

#46 MD(7007.00) Inc(90.0) Azm(269.1) TVD(5725.93)
VS(1659.70) NS(-19.82) EW(-1659.59)

#47 MD(7102.00) Inc(90.3) Azm(270.2) TVD(5725.68)
VS(1754.70) NS(-20.40) EW(-1754.58)

#48 MD(7197.00) Inc(88.8) Azm(271.0) TVD(5726.42)
VS(1849.67) NS(-19.40) EW(-1849.57)



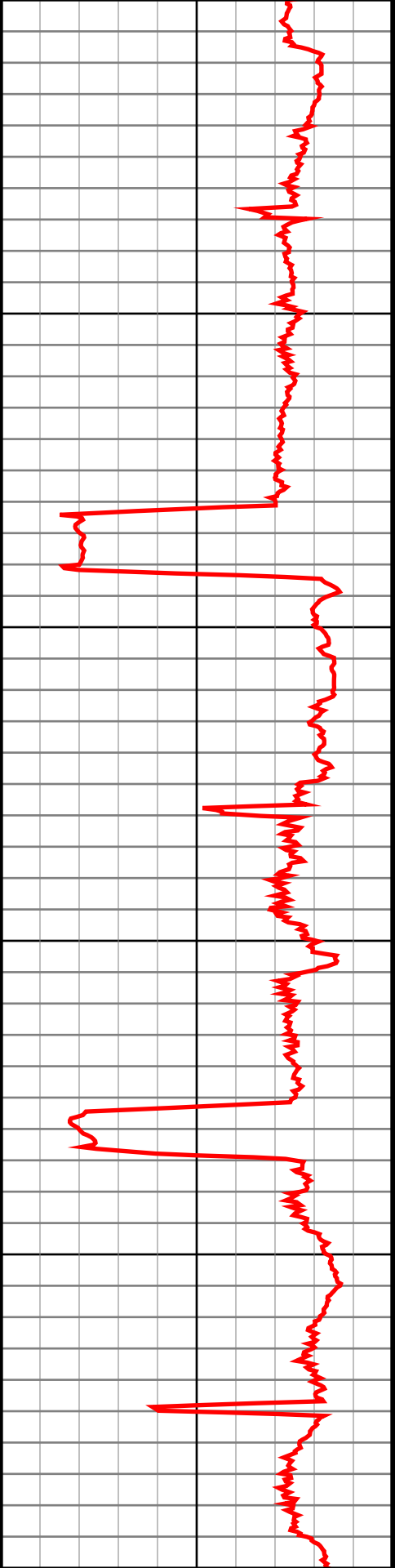
7300

7400

7500

7600

7700



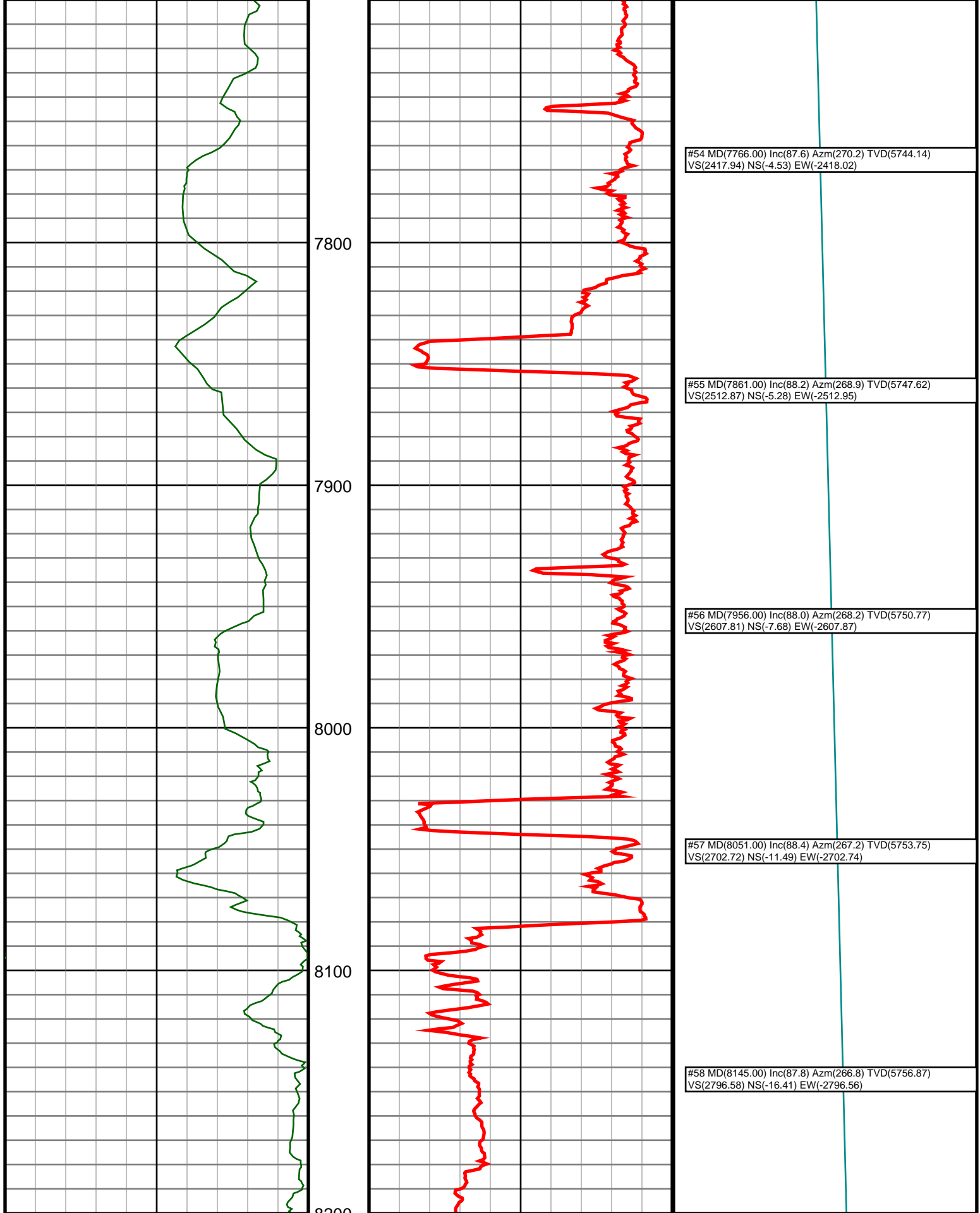
#49 MD(7292.00) Inc(89.4) Azm(271.9) TVD(5727.92)
VS(1944.60) NS(-17.00) EW(-1944.53)

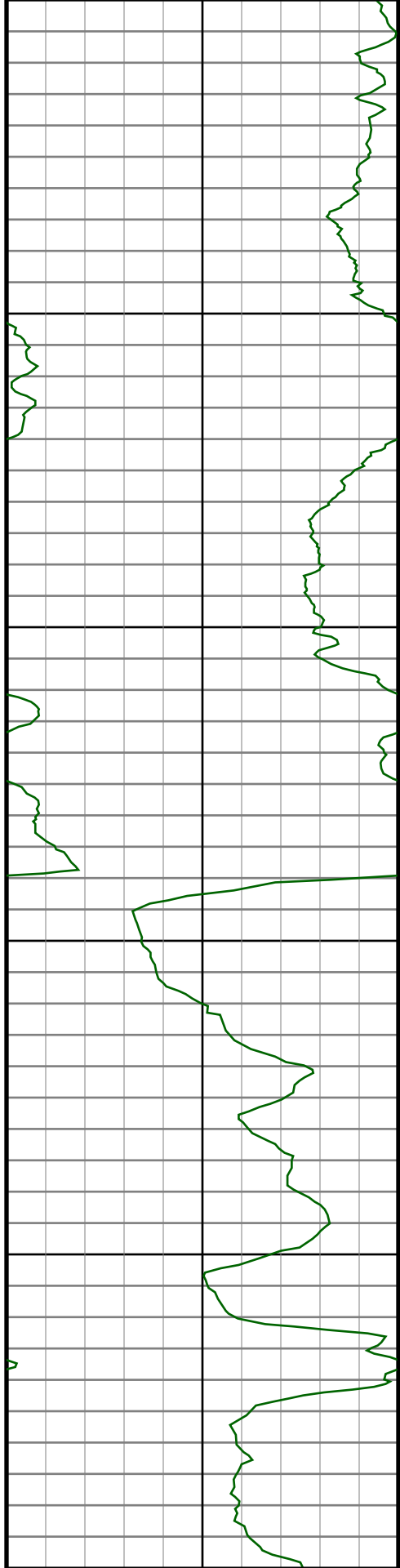
#50 MD(7386.00) Inc(87.7) Azm(272.6) TVD(5730.30)
VS(2038.45) NS(-13.31) EW(-2038.42)

#51 MD(7481.00) Inc(87.2) Azm(272.3) TVD(5734.52)
VS(2133.22) NS(-9.25) EW(-2133.24)

#52 MD(7576.00) Inc(88.4) Azm(270.9) TVD(5738.17)
VS(2228.08) NS(-6.60) EW(-2228.13)

#53 MD(7671.00) Inc(88.4) Azm(270.7) TVD(5740.82)
VS(2323.01) NS(-5.28) EW(-2323.08)





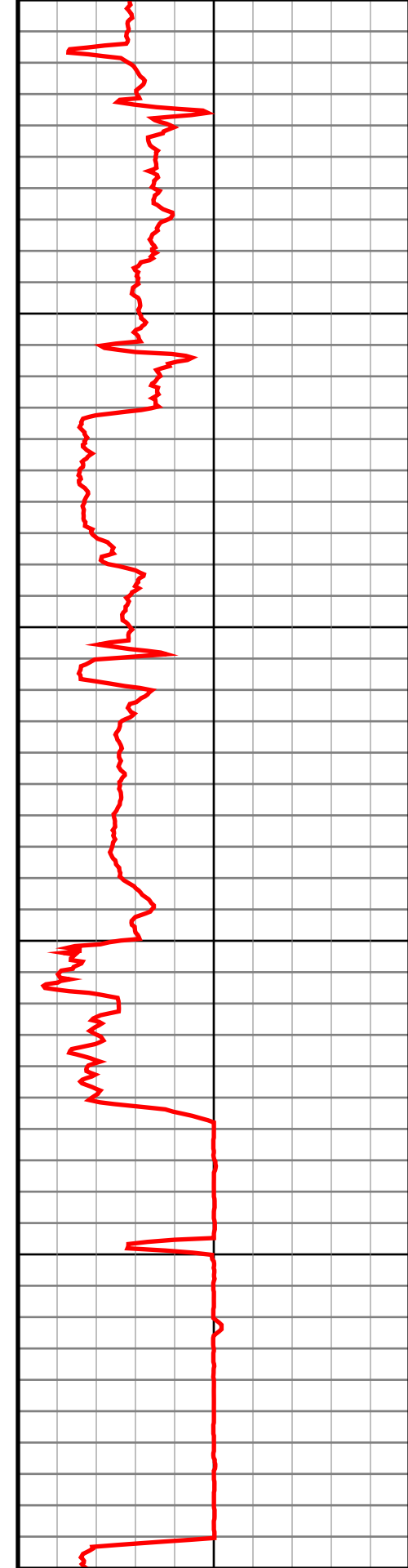
8300

8400

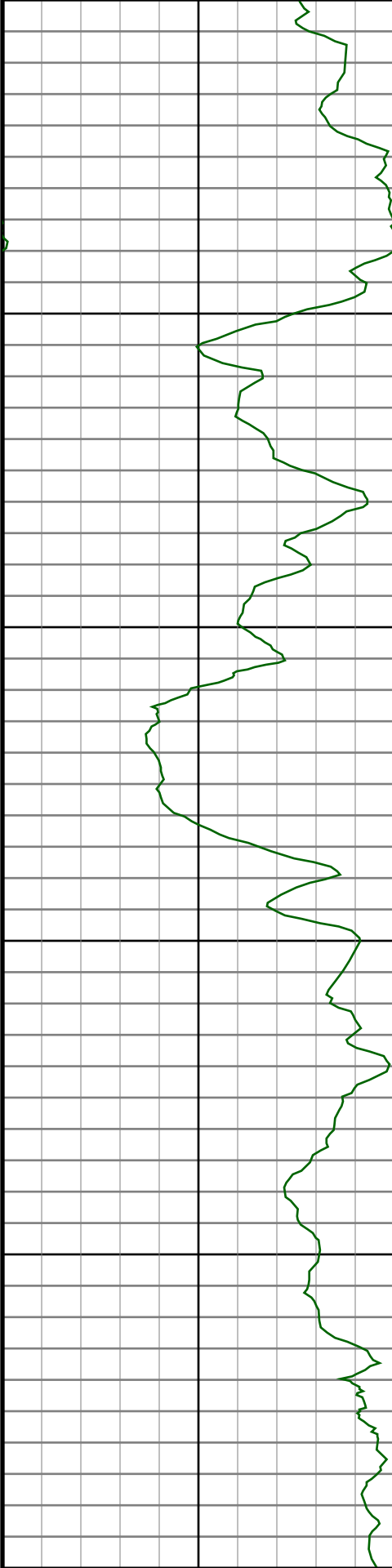
8500

8600

8700



#59 MD(8240.00) Inc(89.3) Azm(267.4) TVD(5759.27) VS(2891.47) NS(-21.21) EW(-2891.41)
#60 MD(8335.00) Inc(89.3) Azm(266.3) TVD(5760.43) VS(2986.37) NS(-26.43) EW(-2986.26)
#61 MD(8430.00) Inc(89.1) Azm(264.7) TVD(5761.76) VS(3081.14) NS(-33.88) EW(-3080.95)
#62 MD(8525.00) Inc(89.7) Azm(265.4) TVD(5762.75) VS(3175.86) NS(-42.08) EW(-3175.59)
#63 MD(8620.00) Inc(90.8) Azm(267.9) TVD(5762.34) VS(3270.74) NS(-47.63) EW(-3270.42)



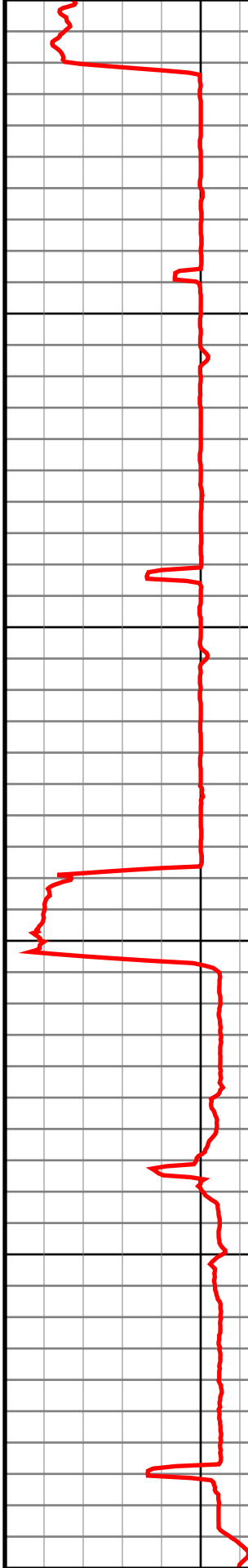
8800

8900

9000

9100

9200



#64 MD(8714.00) Inc(90.7) Azm(270.2) TVD(5761.11)
VS(3364.72) NS(-49.19) EW(-3364.39)

#65 MD(8809.00) Inc(90.9) Azm(270.2) TVD(5759.78)
VS(3459.70) NS(-48.86) EW(-3459.38)

#66 MD(8904.00) Inc(91.3) Azm(270.5) TVD(5757.96)
VS(3554.67) NS(-48.28) EW(-3554.36)

#67 MD(8999.00) Inc(89.3) Azm(270.5) TVD(5757.46)
VS(3649.65) NS(-47.45) EW(-3649.35)

#68 MD(9093.00) Inc(89.4) Azm(270.7) TVD(5758.53)
VS(3743.62) NS(-46.46) EW(-3743.34)

#69 MD(9188.00) Inc(89.7) Azm(270.9) TVD(5759.27)
VS(3838.59) NS(-45.14) EW(-3838.33)

