

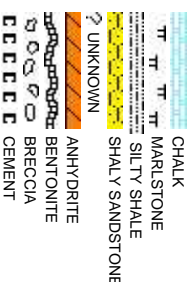


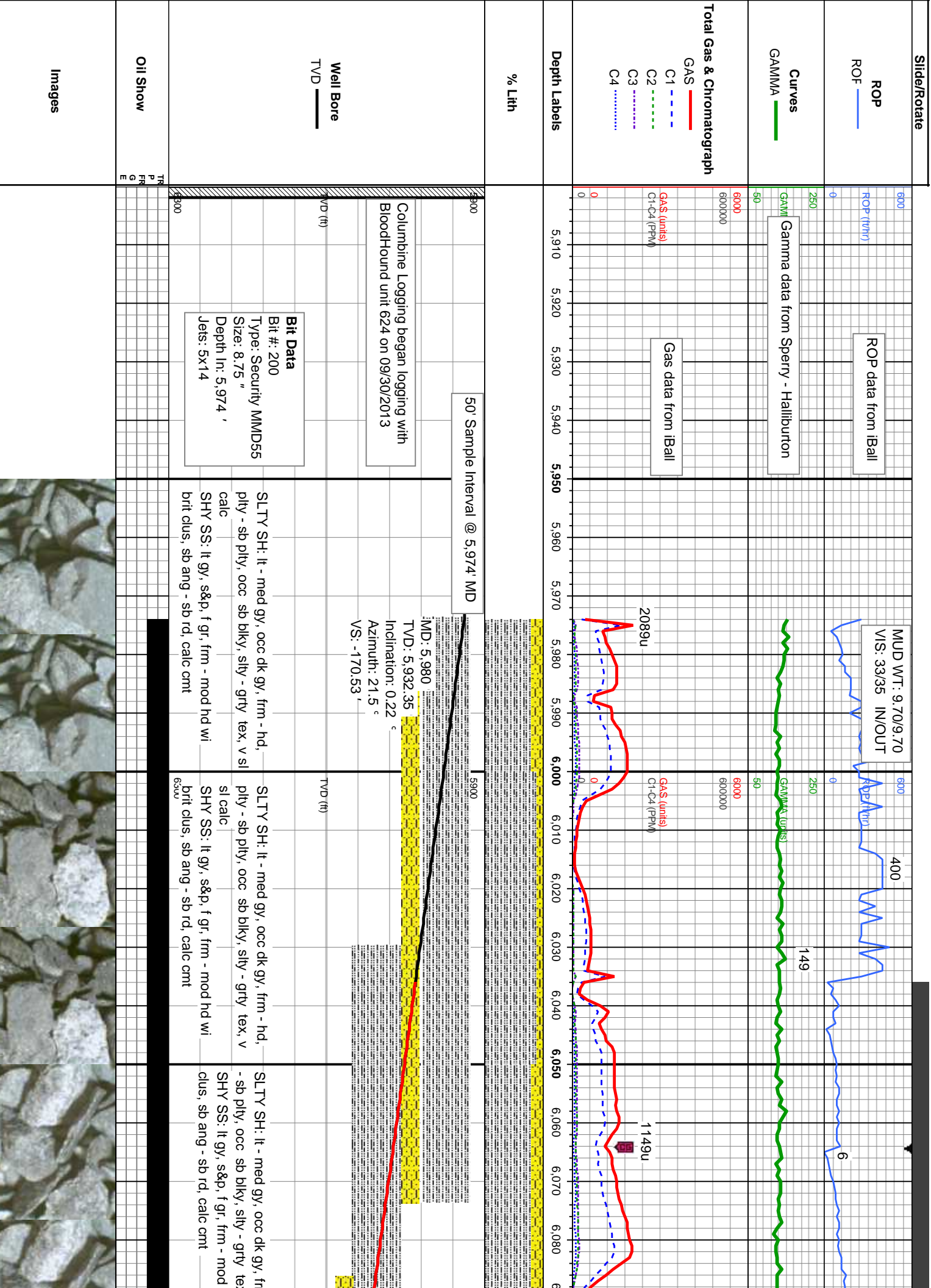
Scale: 5" / 100'
Measured Depth Log

Well Name	Crow Creek State AC36-77HN HORZ		
Location	SEC 36 T7N R63W		
State	Colorado	County	Colorado
Country	USA		
API Number	05-123-37131	Rig Number	H&P 315
Region	DJ Basin	APE #	139141
Spud Date	9/27/2013	Field	Wattenberg
		Drilling Completed	10/4/2013
Surface Coordinates	SESW SEC 36 T7N R63W 270' FSL; 1,755' FWL		
	LAT/LONG: 40.52358000/-104.38794000		
Bottom Hole Coordinates	NW/NW SEC 36 T7N R63W 1,320' FWL; 535' FNL		
Ground Elevation	4788'	K.B. Elevation	4812'
Logged Interval	5974'	To	11083'
Formation	Niobrara B Chalk		
Type of Drilling Fluid	LSND		
Total Depth	11083'		

Company Noble Energy Inc
Address 1625 Broadway
Denver, CO 80202

Name MARK COLE, N
Company COLUMBINE LOGGING
Address 2385 S Lipan St
Denver, CO 80202

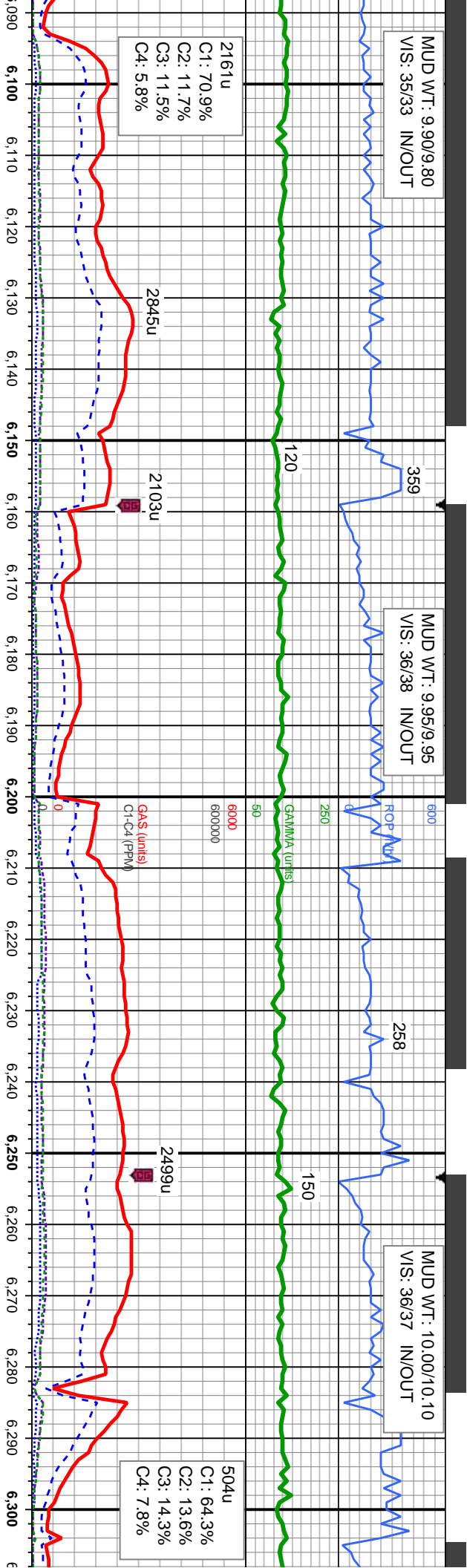




MUD WT: 9.90/9.80
VIS: 35/33 IN/OUT

MUD WT: 9.95/9.95
VIS: 36/38 IN/OUT

MUD WT: 10.00/10.10
VIS: 36/37 IN/OUT



<<Scale Change>>

MD: 6,106
TVD: 6,057.82
Inclination: 9.06 °
Azimuth: 350.33 °
VS: -160.39

MD: 6,154
TVD: 6,104.76
Inclination: 14.8 °
Azimuth: 350.74 °
VS: -150.5

MD: 6,201
TVD: 6,149.57
Inclination: 20.21 °
Azimuth: 355.08 °
VS: -136.38

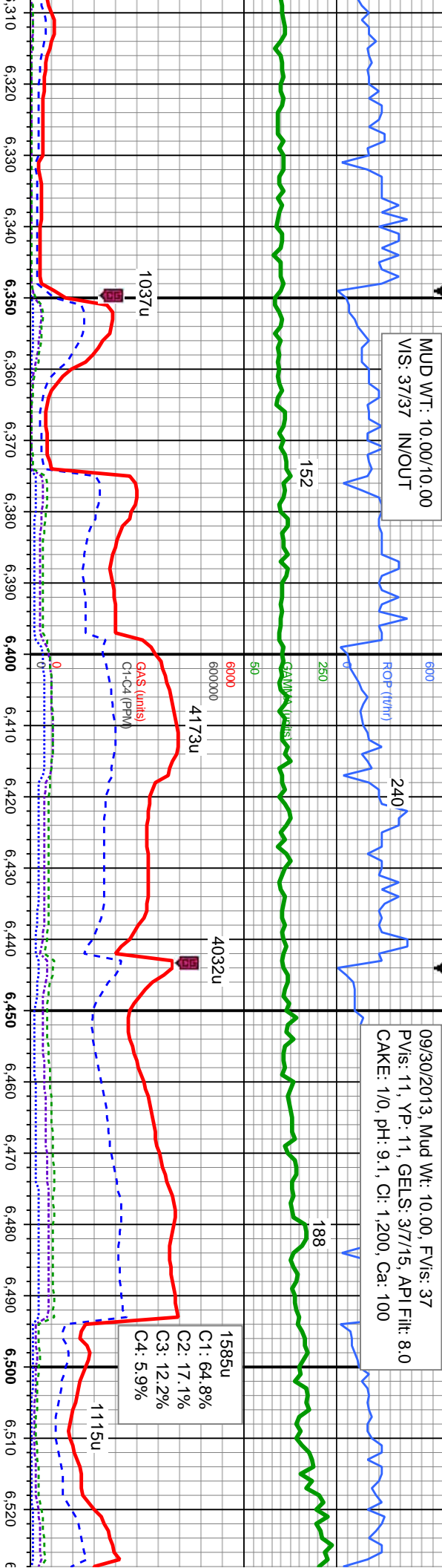
MD: 6,249
TVD: 6,193.91
Inclination: 24.75 °
Azimuth: 358.14 °
VS: -118.05

MD: 6,296
TVD: 6,236.08
Inclination: 27.65 °
Azimuth: 97.38
VS: -97.38

SLTY SH: It - med gy, occ dk gy, frm - hd, pty - sb pty, occ sb blk, silty - grty tex, v sil calc	SLTY SH: It - med gy, occ dk gy, frm - hd, pty - sb pty, occ sb blk, silty - grty tex, v sil calc	SLTY SH: It - med gy, occ dk gy, frm - hd, pty - sb pty, occ sb blk, silty - grty tex, v sil calc	SLTY SH: It - med gy, occ dk gy, frm - hd, pty - sb pty, occ sb blk, silty - grty tex, v sil calc
SHY SS: It gy, s&p, f gr, frm - mod hd wi brit clus, sb ang - sb rd, calc cmt	SHY SS: It gy, s&p, f gr, frm - mod hd wi brit clus, sb ang - sb rd, calc cmt	SHY SS: It gy, s&p, f gr, frm - mod hd wi brit clus, sb ang - sb rd, calc cmt	SHY SS: It gy, s&p, f gr, frm - mod hd wi brit clus, sb ang - sb rd, calc cmt

MUD WT: 10.00/10.00
VIS: 37/37 IN/OUT

09/30/2013, Mud Wt: 10.00, FVIs: 37
PVIs: 11, YP: 11, GELS: 3/7/15, API Filtr: 8.0
CAKE: 1/0, pH: 9.1, CI: 1,200, Ca: 100



<<Scale Change>>

25' Sample Interval @ 6,500' MD

MD: 6,344'
TVD: 6,277.98'
Inclination: 30.71 °
Azimuth: 0.6 °
VS: -74.1'

MD: 6,391'
TVD: 6,317.67'
Inclination: 34.06 °
Azimuth: 0.2 °
VS: -49.06'

MD: 6,439'
TVD: 6,356.91'
Inclination: 36.26 °
Azimuth: 359.69 °
VS: -21.54'

MD: 6,486'
TVD: 6,393.62'
Inclination: 40.96 °
Azimuth: 359.45 °
VS: 7.68'

SLTY SH: It - med gy, occ dk gy, frm - hd, pily
- sb pily, occ sb blkly, silty - grty tex, v sl calc
SHY SS: It gy, s&p, f gr, frm - mod hd wt brit
clus, sb ang - sb rd, calc cnt

SLTY SH: It - med gy, occ dk gy, frm - hd, pily
- sb pily, occ sb blkly, silty - grty tex, v sl calc
SHY SS: It gy, s&p, f gr, frm - mod hd wt brit
clus, sb ang - sb rd, calc cnt

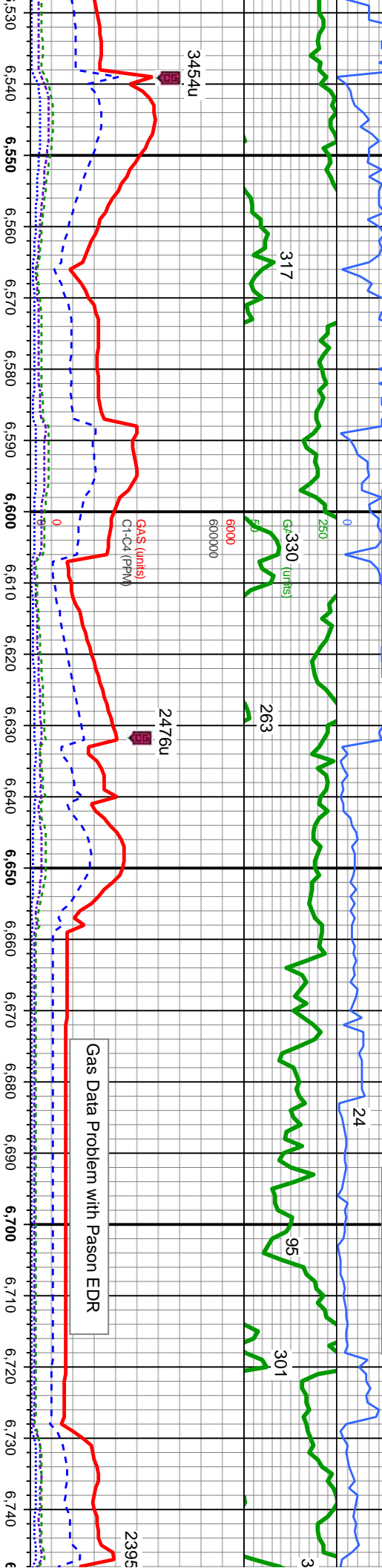
SLTY SH: It - med gy, occ dk gy, frm - hd, pily
- sb pily, occ sb blkly, silty - grty tex, v sl calc
SHY SS: It gy, s&p, f gr, frm - mod hd wt brit
clus, sb ang - sb rd, calc cnt

SLTY SH: It - med gy, occ dk gy, frm - hd, pily
- sb pily, occ sb blkly, silty - grty tex, v sl calc
SHY SS: It gy, s&p, f gr, frm - mod hd wt brit
clus, sb ang - sb rd, calc cnt



MUD WT: 10.45/10.45
VIS: 38/38 IN/OUT

MUD WT: 10.45/10.45
VIS: 39/39 IN/OUT



Sharon Springs Marker @
MD: 6,581
TVD: 6,459.85
Inclination: 49.71 °

Niobrara Top @
MD: 6,628
TVD: 6,489
Inclination: 50.71 °

Nio A Chalk Top @
MD: 6,664
TVD: 6,512
Inclination: 54.47 °

Nio A Marl Top @
MD: 6,708
TVD: 6,537
Inclination: 58.54 °

MD: 6,534
TVD: 6,428.38
Inclination: 46.22 °
Azimuth: 3.1 °
VS: 75.25

MD: 6,629
TVD: 6,490.57
Inclination: 50.71 °
Azimuth: 4.23 °
VS: 111.67

MD: 6,676
TVD: 6,519.12
Inclination: 54.47 °
Azimuth: 5.05 °
VS: 148.43

MD: 6,724
TVD: 6,545.6
Inclination: 58.54 °
Azimuth: 4.31 °
VS: 187.84

dk gy, frm - hd, pily	SLTY SH: lt - med gy, occ dk gy, frm - hd, pily	SLTY SH: lt - medgy, occ dk gy, frm - mod	CHK: lt - med gy - gy brn, mot, lam, sft - frm,
- grty tex, v sl calc	- sb pily, occ sb blkly, sily - grty tex, v sl calc	hd, sb pily - sb blkly, sily - grty tex, sl calc	sb pily - sb blkly, rthy tex, v calc
frm - mod hd wi brit	SHY SS: lt gy, s&g, f gr, frm - mod hd wi brit	MRL: lt - med gy, sme blk, sft - mod hd, sb	SLTY SH: lt - medgy, occ dk gy, frm - mod
	clus, sb ang - sb rd, calc cnt	pily - pily, sily - grty tex, sme bent	hd, sb pily - sb blkly, sily - grty tex, sl calc
			MRL: lt - med gy, sme blk, sft - mod hd, sb
			pily - pily, sily - grty tex, sme bent

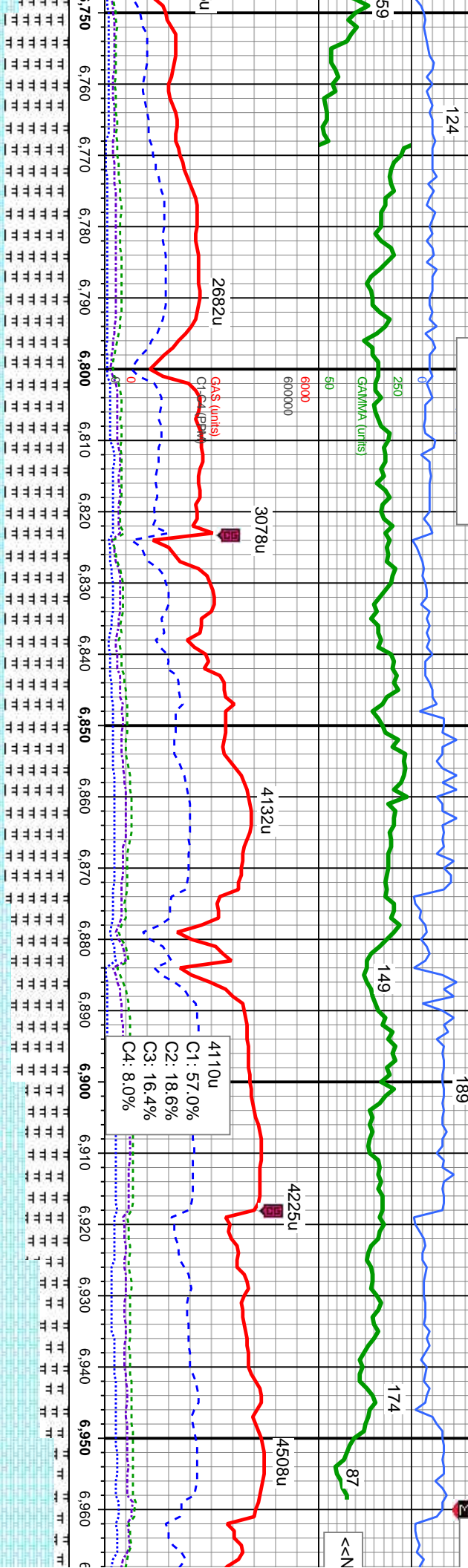


MUD WT: 10.50/10.50
VIS: 37/37 IN/OUT

09/31/2013

10/01/

MINDEPTH



<<Scale Change>>

Nio B Chalk Top @
6,898' MD 6,604' TVD

MD: 6,771
TVD: 6,567.87
Inclination: 64.88 °
Azimuth: 1.75 °
VS: 228.76 '
MRL: lt - med gy, sme blk, sft - mod hd, sb
ply - pty, silty - grty tex
CHK: lt - med gy - gy brn, mot, lam, sft - frm,
sb ply - sb blk, rthy tex, v calc, sme bent

MD: 6,819
TVD: 6,585.07
Inclination: 73.1 °
Azimuth: 359.32 °
VS: 273.29 '
MRL: lt - med gy, sme blk, sft - mod hd, sb
ply - pty, silty - grty tex
CHK: lt - med gy - gy brn, mot, lam, sft - frm,
sb ply - sb blk, rthy tex, v calc, tr bent

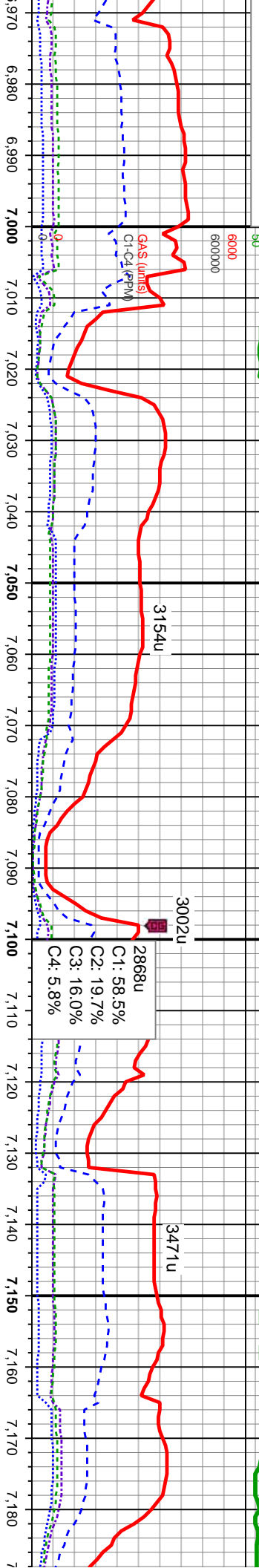
MD: 6,866
TVD: 6,597.17
Inclination: 77.07 °
Azimuth: 358.89 °
VS: 318.56 '
MRL: lt - med gy, sme blk, sft - mod hd, sb
ply - pty, silty - grty tex
CHK: lt - med gy - gy brn, mot, lam, sft - frm,
sb ply - sb blk, rthy tex, v calc, tr bent

MD: 6,906
TVD: 6,605.72
Inclination: 78.22 °
Azimuth: 359.54 °
VS: 357.51 '
CHK: lt - med gy - gy brn, mot, lam, sft - frm,
sb ply - sb blk, rthy tex, v calc
MRL: lt - med gy, sme blk, sft - mod hd, sb
ply - pty, silty - grty tex, tr bent

MD: 6,952
TVD: 6,613.86
Inclination: 81.4 °
Azimuth: 0.42 °
VS: 402.58 '
CHK: lt - med gy
sb ply - sb blk,
MRL: lt - med gy
ply - pty, silty -



MUD WT: 9.30/9.30
VIS: 33/33 IN/OUT



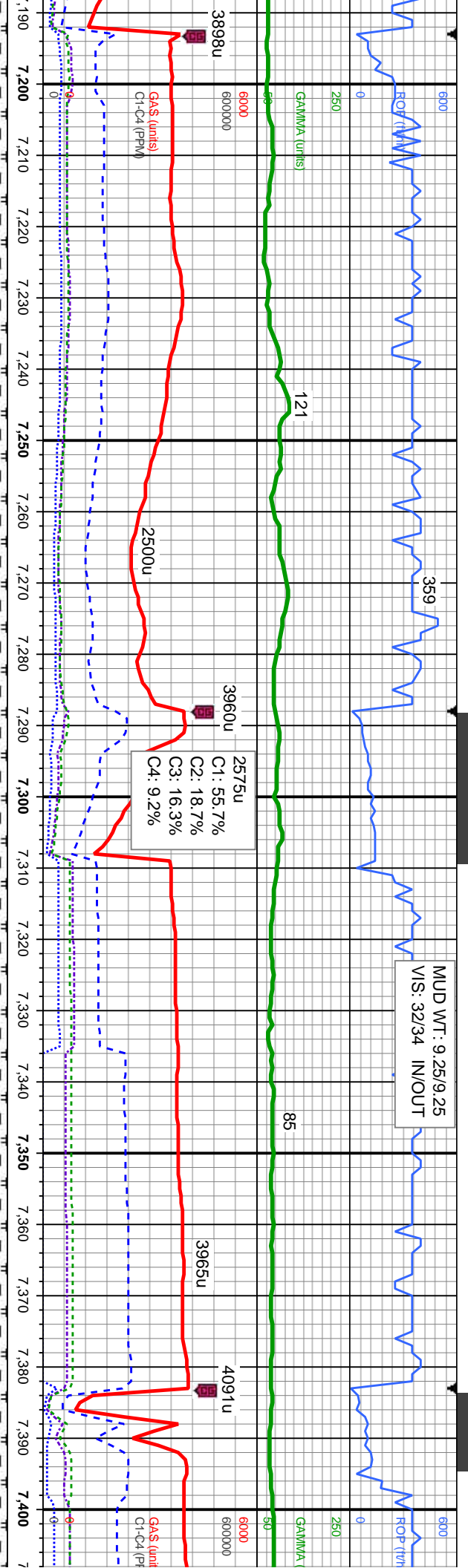
6500	50' Sample Interval @ 7.050' MD	MD: 7.068	MD: 7.132
TVD: 6,624.64	TVD: 6,626.64	TVD: 6,626.64	TVD: 6,626.64
Inclination: 87.93	Inclination: 87.93	Inclination: 88.49	Inclination: 88.49
Azimuth: 0.05	Azimuth: 0.05	Azimuth: 358.88	Azimuth: 358.88
VS: 517.47	VS: 517.47	VS: 581.21	VS: 581.21

```

Bit Data
Bit #: 300
Type: Security MMMD54
Size: 6.13 "
Depth In: 7,006 '
Jets: 5x14

```

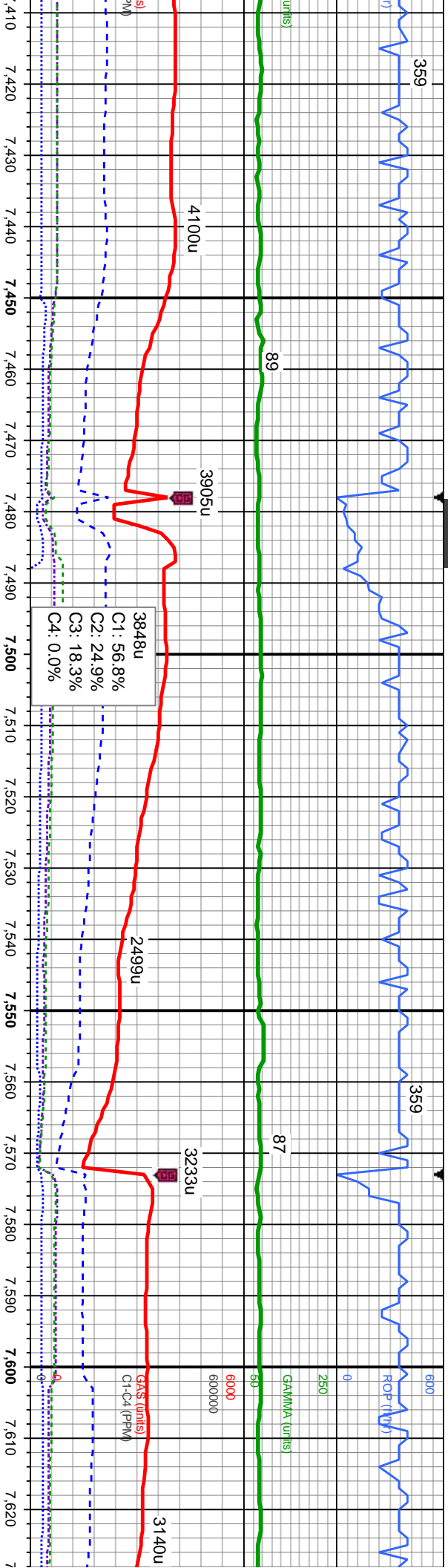
90% CHK: It - medgy - gy bñ, mot
- frñ, sb ply - sb blky, rthy tex, v c
10% MRL: It - med gy, sme blk, stñ
hd, sb ply - ply, stly - grty tex, no
fos



6500	MD: 7.227'	TVD: 6,626.84'	Inclination: 91.26°	Azimuth: 358.54°	VS: 676.97'
6500	MD: 7.321'	TVD: 6,625.68'	Inclination: 90.15°	Azimuth: 357.27°	VS: 769.8'
6500	MD: 7.321'	TVD: 6,625.68'	Inclination: 90.15°	Azimuth: 357.27°	VS: 769.8'

TVD (ft)	90% CHK: It - medgy - gy brn, mot, lam, sft - frm, sb ply - sb blk, rthy tex, v calc 10% MRL: It - med gy, sme blk, sft - mod hd, sb ply - ply, silty - grty tex, no bent, tr fos	90% CHK: It - medgy - gy brn, mot, lam, sft - frm, sb ply - sb blk, rthy tex, v calc 10% MRL: It - med gy, sme blk, sft - mod hd, sb ply - ply, silty - grty tex, no bent, tr fos	90% CHK: It - medgy - gy brn, mot, lam, sft - frm, sb ply - sb blk, rthy tex, v calc 10% MRL: It - med gy, sme blk, sft - mod hd, sb ply - ply, silty - grty tex, no bent, tr fos	90% CHK: It - medgy - gy brn, mot, lam, sft - frm, sb ply - sb blk, rthy tex, v calc 10% MRL: It - med gy, sme blk, sft - mod hd, sb ply - ply, silty - grty tex, no bent, tr fos
----------	-----------------------------------------------------------------------------------------------------------------------------------------------------------------------------------------------	-----------------------------------------------------------------------------------------------------------------------------------------------------------------------------------------------	-----------------------------------------------------------------------------------------------------------------------------------------------------------------------------------------------	-----------------------------------------------------------------------------------------------------------------------------------------------------------------------------------------------

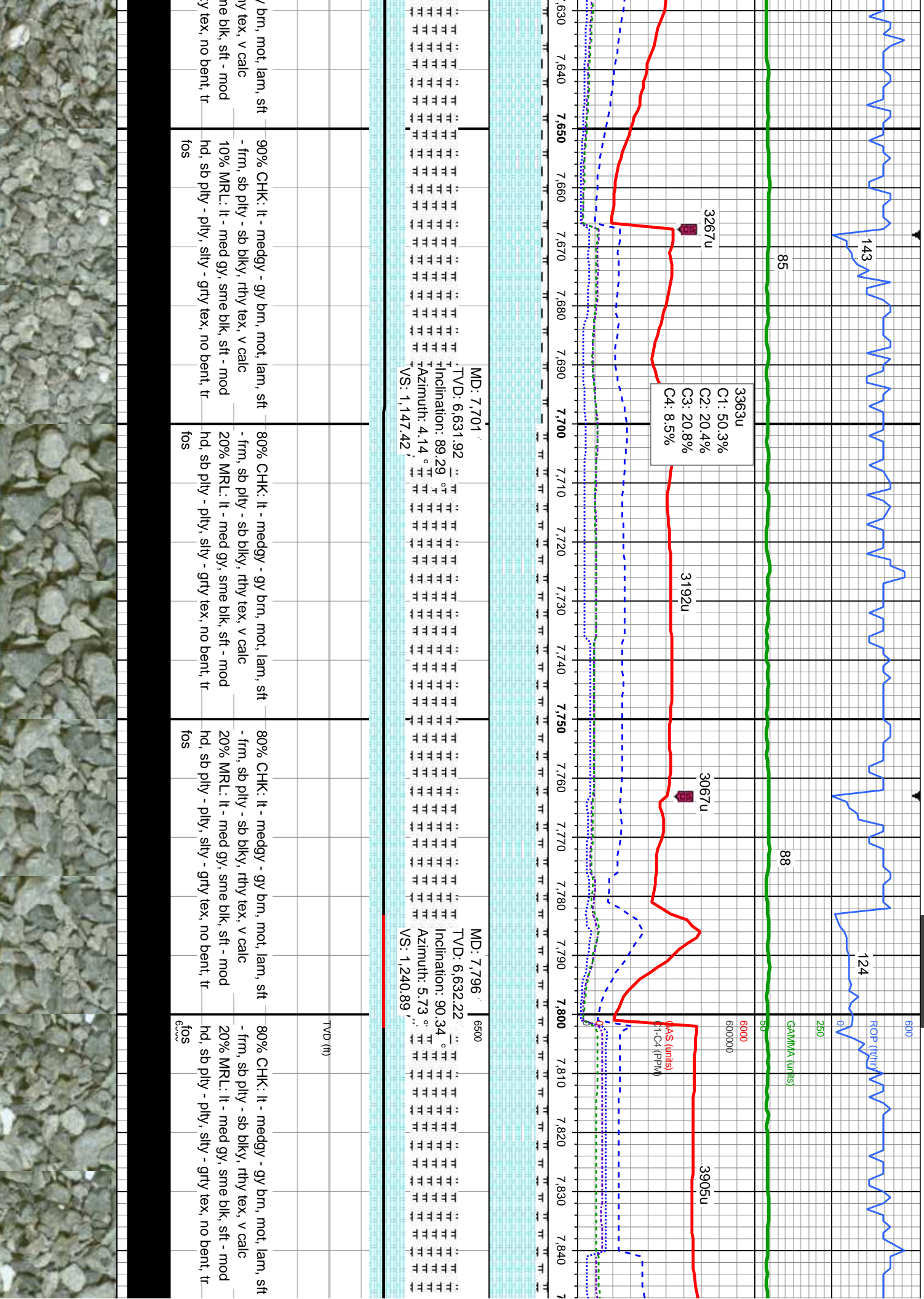


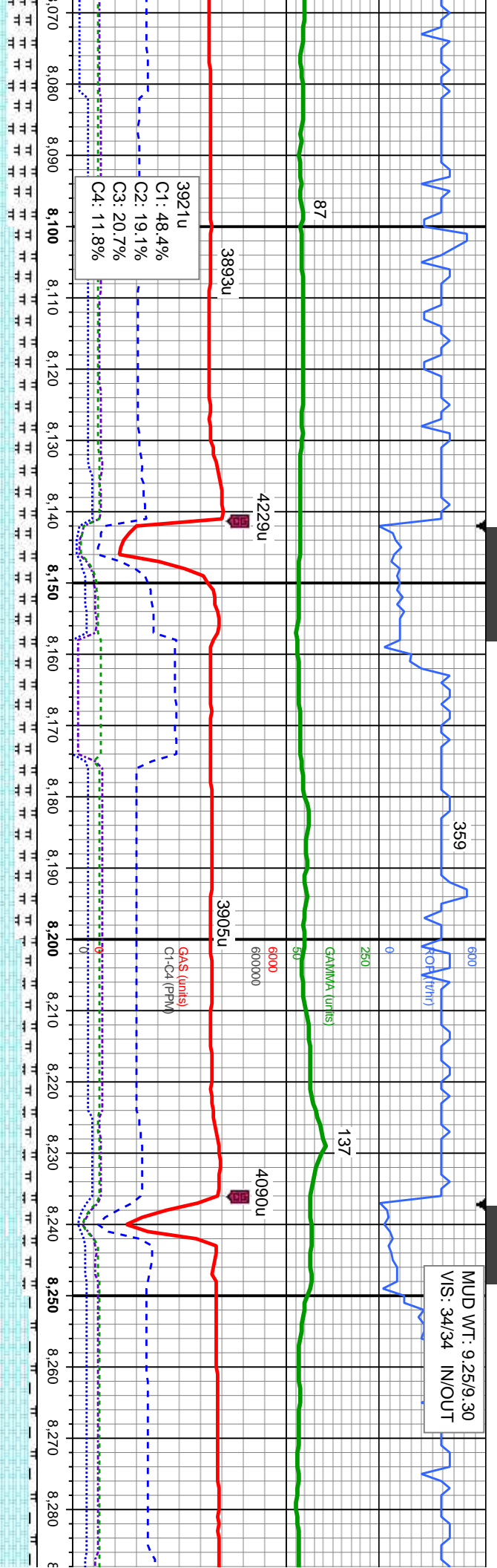


MD: 7.416		MD: 7.511		MD: 7.606	
D: 6,626.32	π	TVD: 6,628.01	π	TVD: 6,630.13	π
Inclination: 89.08 °	π	Inclination: 88.89 °	π	Inclination: 88.55 °	π
Imuth: 358.86 °	π	Azinuth: 1.01 °	π	Azinuth: 2.16 °	π
VS: 864.63	π	VS: 959.2	π	VS: 1,053.48	π

CHK: It - medgy - gy brn, mot, lam, sft	90% CHK: It - medgy - gy brn, mot, lam, sft	90% CHK: It - medgy - gy brn, mot, lam, sft	90% CHK: It - medgy - gy brn, mot, lam, sft
-frm, sb ply - sb blk, rthy tex, v calc	-frm, sb ply - sb blk, rthy tex, v calc	-frm, sb ply - sb blk, rthy tex, v calc	-frm, sb ply - sb blk, rthy tex, v calc
10% MRL: It - med gy, sme blk, sft - mod	10% MRL: It - med gy, sme blk, sft - mod	10% MRL: It - med gy, sme blk, sft - mod	10% MRL: It - med gy, sme blk, sft - mod
hd, sb ply - ply, silty - grfy tex, no bent, tr	hd, sb ply - ply, silty - grfy tex, no bent, tr	hd, sb ply - ply, silty - grfy tex, no bent, tr	hd, sb ply - ply, silty - grfy tex, no bent, tr
fos	fos	fos	fos



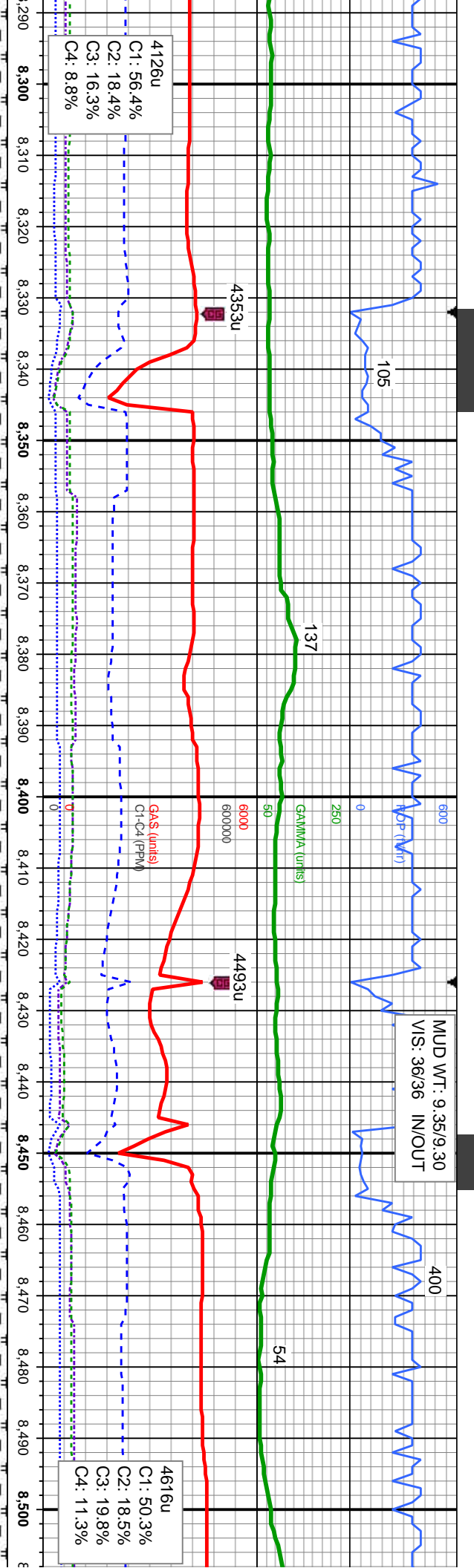




MD: 8.080	MD: 8.175	MD: 8.270
TVD: 6.633	TVD: 6.636.12	TVD: 6.640.15
Inclination: 88.95 °	Inclination: 87.29 °	Inclination: 87.84 °
Azimuth: 2.16 °	Azimuth: 358.7 °	Azimuth: 357.5 °
VS: 1,521.13'	VS: 1,615.57'	VS: 1,710.31'

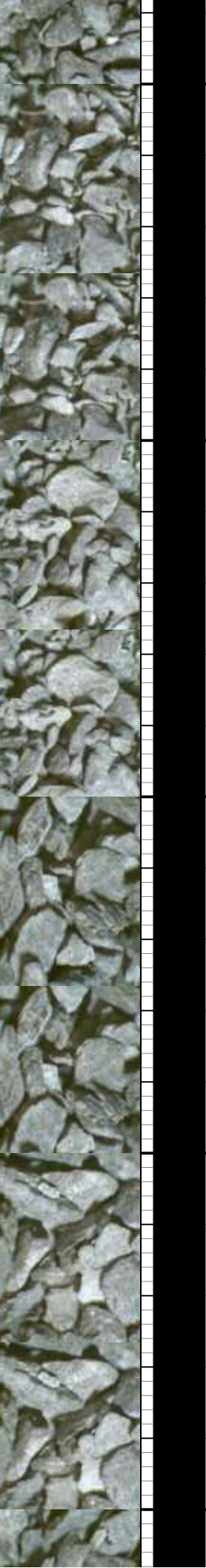
medgy - gy brn, mot, lam, sft - frm, sb ply - sb blk, rthy tex, v calc 30% MRL: It - med gy, sme blk, sft - mod hd, sb ply - ply, silty - grty tex, no bent, tr fos	70% CHK: It - medgy - gy brn, mot, lam, sft - frm, sb ply - sb blk, rthy tex, v calc 30% MRL: It - med gy, sme blk, sft - mod hd, sb ply - ply, silty - grty tex, no bent, tr fos	80% CHK: It - medgy - gy brn, mot, lam, sft - frm, sb ply - sb blk, rthy tex, v calc 20% MRL: It - med gy, sme blk, sft - mod hd, sb ply - ply, silty - grty tex, no bent, tr fos	90% CHK: It - medgy - gy brn, mot, lam, sft - frm, sb ply - sb blk, rthy tex, v calc 10% MRL: It - med gy, sme blk, sft hd, sb ply - ply, silty - grty tex, no bent, tr fos
---------------------------------------------------------------------------------------------------------------------------------------------------------------------------------	-----------------------------------------------------------------------------------------------------------------------------------------------------------------------------------------------	-----------------------------------------------------------------------------------------------------------------------------------------------------------------------------------------------	-----------------------------------------------------------------------------------------------------------------------------------------------------------------------------------------





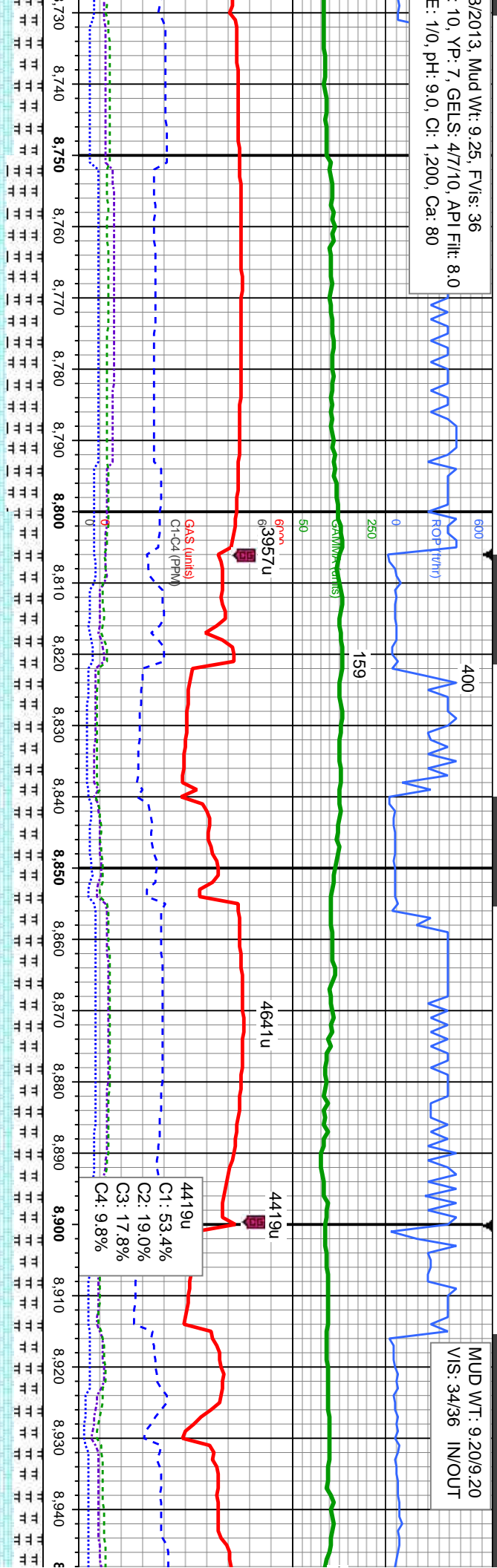
MD: 8,365 TVD: 6,640.92	MD: 8,460 TVD: 6,639.03
Inclination: 91.23 °	Inclination: 91.05 °
Azimuth: 357.58 °	Azimuth: 356.54 °
VS: 1,805.18'	VS: 1,900.07'

90% CHK: It - medgy - gy brn, mot, lam, sft - frm, sb ply - sb blk, rthy tex, v calc 10% MRL: It - med gy, sme blk, sft - mod hd, sb ply - ply, silty - grty tex, no bent, tr fos	90% CHK: It - medgy - gy brn, mot, lam, sft - frm, sb ply - sb blk, rthy tex, v calc 10% MRL: It - med gy, sme blk, sft - mod hd, sb ply - ply, silty - grty tex, no bent, tr fos	90% CHK: It - medgy - gy brn, mot, lam, frm - mod hd, sb ply - sb blk, rthy tex, v calc 10% MRL: It - med gy, sme blk, frm - hd, sb ply - sb blk, silty - grty tex, no bent, tr fos	90% CHK: It - medgy - gy brn, mot, lam, frm - mod hd, sb ply - sb blk, rthy tex, v calc 10% MRL: It - med gy, sme blk, frm - hd, sb ply - sb blk, silty - grty tex, no bent, tr fos
-----------------------------------------------------------------------------------------------------------------------------------------------------------------------------------------------	-----------------------------------------------------------------------------------------------------------------------------------------------------------------------------------------------	----------------------------------------------------------------------------------------------------------------------------------------------------------------------------------------------	----------------------------------------------------------------------------------------------------------------------------------------------------------------------------------------------



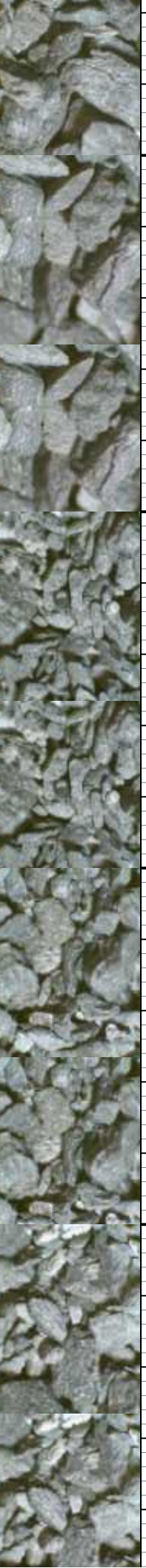
3/2013, Mud Wt: 9.25, FVIs: 36
10, YP: 7, GELS: 477/10, API Filt: 8.0
E: 1/0, pH: 9.0, Cl: 1,200, Ca: 80

MUD WT: 9.20/9.20
VIS: 34/36 IN/OUT

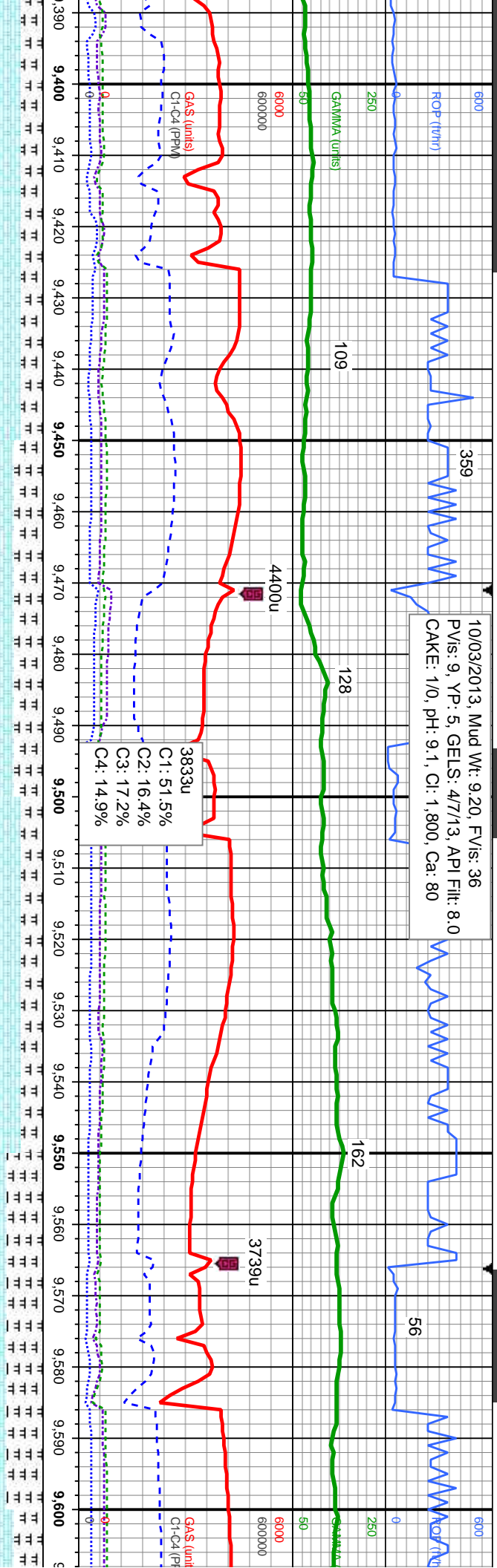


MD: 8,745 TVD: 6,631.69		MD: 8,840 TVD: 6,631		MD: 8,935 TVD: 6,632.26	
Inclination: 90.71 °		Inclination: 90.12 °		Inclination: 88.36 °	
Azimuth: 356.8 °		Azimuth: 357.3 °		Azimuth: 358.94 °	
VS: 2,184.74		VS: 2,279.65		VS: 2,374.46	

brn, mot, lam, frm - e blk, frm - hd, sb ply - sb blk, sily - grty tex, tr bent wi dissm	50% CHK: It - medgy - gy brn, mot, lam, frm - mod hd, sb ply - sb blk, rthy tex, v calc 50% MRL: It - med gy, sme blk, frm - hd, sb ply - sb blk, sily - grty tex, tr bent wi dissm	60% CHK: It - medgy - gy brn, mot, lam, frm mod hd, sb ply - sb blk, rthy tex, v calc 40% MRL: It - med gy, sme blk, frm - hd, sb ply - sb blk, sily - grty tex, tr bent wi dissm	60% CHK: It - medgy - gy brn, mot, lam, frm mod hd, sb ply - sb blk, rthy tex, v calc 40% MRL: It - med gy, sme blk, frm - hd, sb ply - sb blk, sily - grty tex, tr bent wi dissm	60% CHK: It - medgy - gy brn, mot, lam, frm mod hd, sb ply - sb blk, rthy tex, v calc 40% MRL: It - med gy, sme blk, frm - hd, sb ply - sb blk, sily - grty tex, tr bent wi dissm
pyr, tr fos frag	pyr, tr fos frag	pyr, tr fos frag	pyr, tr fos frag	pyr, sme fos frag



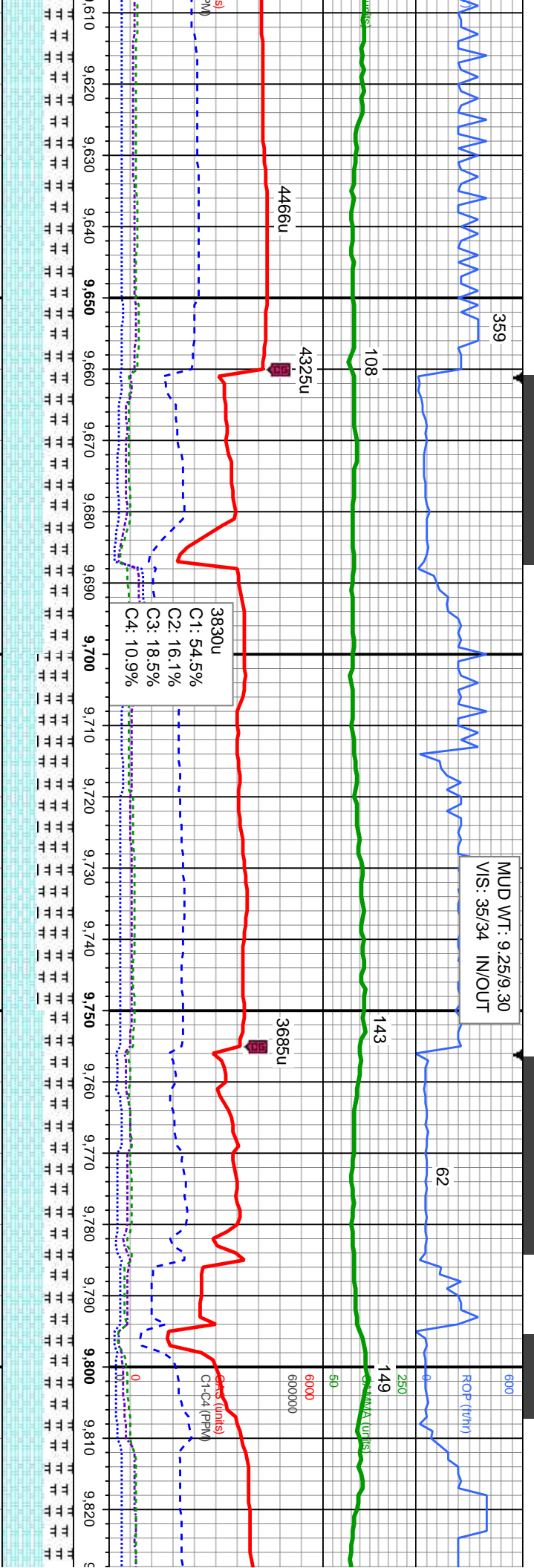
10/03/2013, Mud Wt: 9.20, FVIs: 36
PVIs: 9, YP: 5, GELS: 4.7/1.3, API Filt: 8.0
CAKE: 1/0, pH: 9.1, Cl: 1,800, Ca: 80



MD: 9.409 TVD: 6,633.05'		MD: 9.504 TVD: 6,631.24'		MD: 9.599 TVD: 6,629.75'	
Inclination: 90.99 °		Inclination: 91.2 °		Inclination: 90.59 °	
Azimuth: 1.47 °		Azimuth: 0.54 °		Azimuth: 359.11 °	
VS: 2,844.5'		VS: 2,938.9'		VS: 3,033.5'	

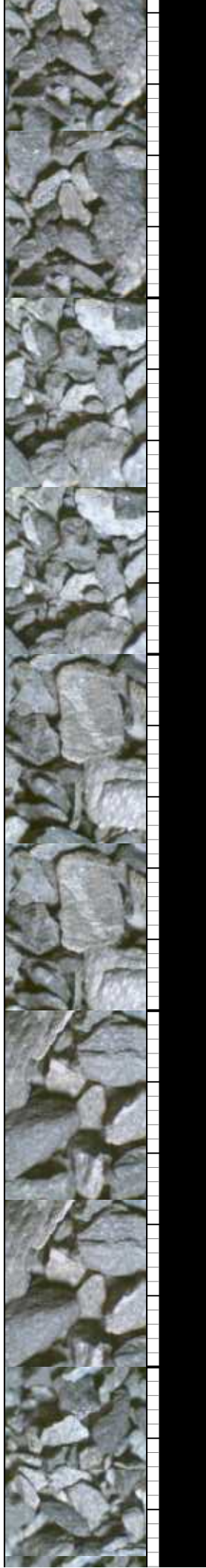
lam, frm - 70% CHK: lt - medgy - gy brn, mot, lam, frm - mod hd, sb pily - sb blkly, rthy tex, v calc calic 30% MRL: lt - med gy, sme blk, frm - hd, sb pily - sb blkly, stly - grty tex, no bent, occ fos frag 6900		lam, frm - 60% CHK: lt - medgy - gy brn, mot, lam, frm - mod hd, sb pily - sb blkly, rthy tex, v calc calic 40% MRL: lt - med gy, sme blk, frm - hd, sb pily - sb blkly, stly - grty tex, no bent, occ fos frag		lam, frm - 70% CHK: lt - medgy - gy brn, mot, lam, frm - mod hd, sb pily - sb blkly, rthy tex, v calc calic 30% MRL: lt - med gy, sme blk, frm - hd, sb pily - sb blkly, stly - grty tex, no bent, tr fos frag		lam, frm - 50% CHK: lt - medgy - gy brn, mot, lam, frm - mod hd, sb pily - sb blkly, rthy tex, v calc calic 40% MRL: lt - med gy, sme blk, frm - hd, sb pily - sb blkly, stly - grty tex, no bent, occ fos frag 6900	
TVD (ft)		TVD (ft)		TVD (ft)		TVD (ft)	

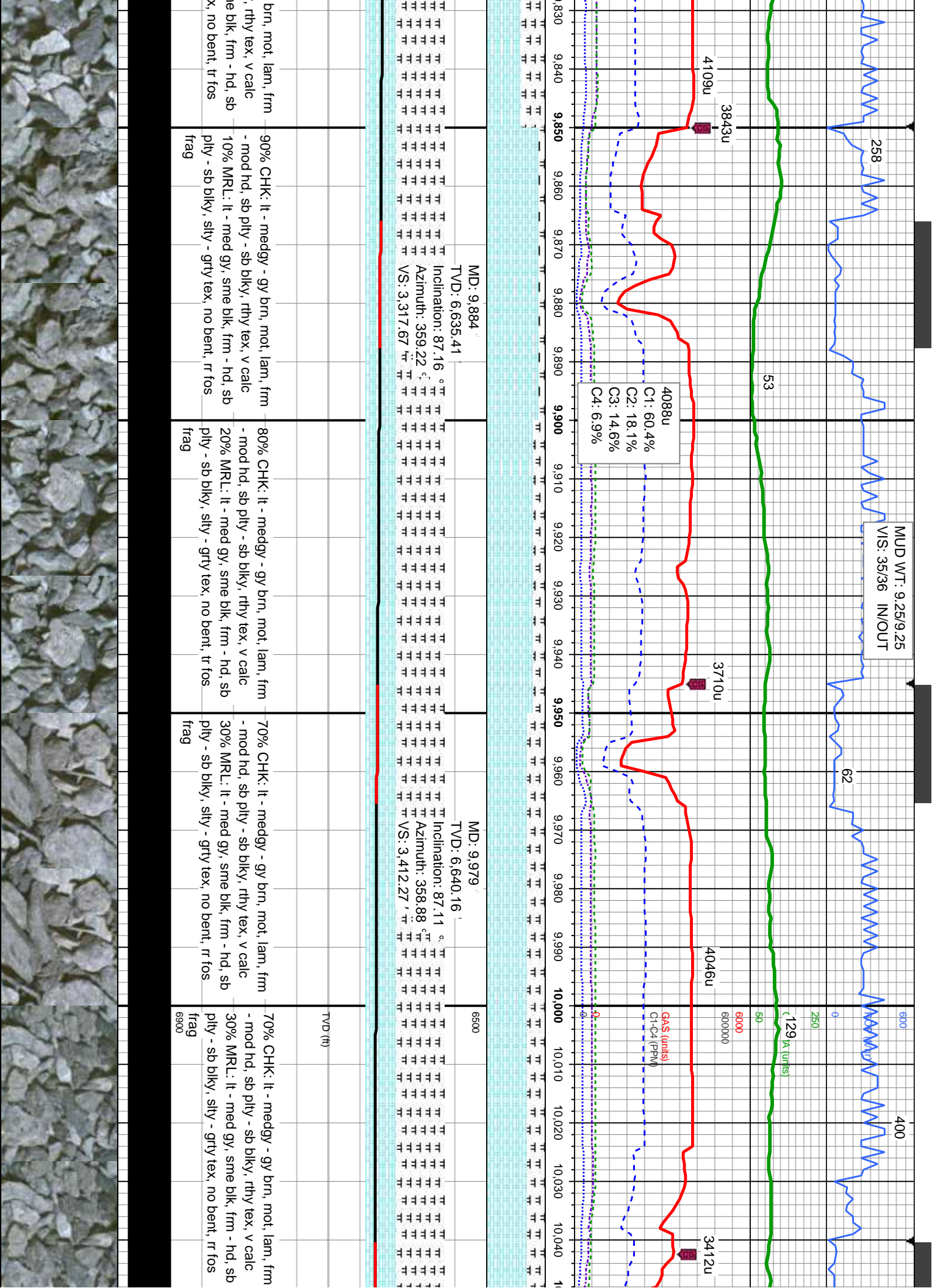


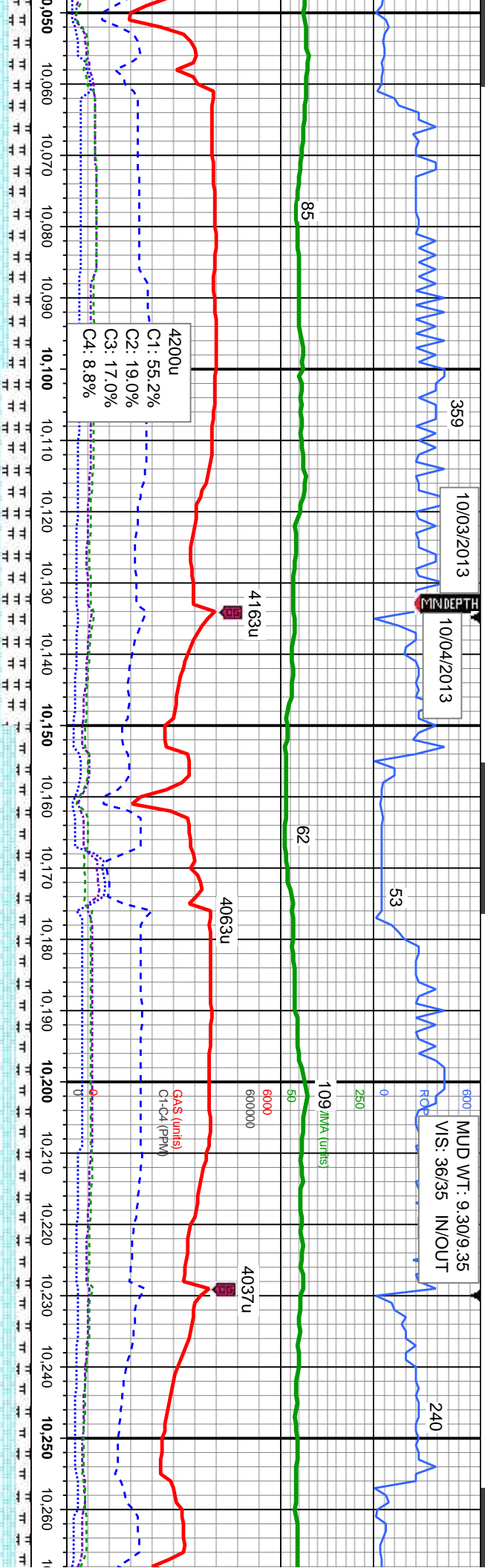


MD: 9.694 TVD: 6,628.83		MD: 9.789 TVD: 6,630.73		MD: 9.800 TVD: 6,630.73	
Inclination: 90.52 °		Inclination: 87.19 °		Inclination: 87.19 °	
Azimuth: 358.71 °		Azimuth: 357.92 °		Azimuth: 357.92 °	
VS: 3,128.23		VS: 3,223.01		VS: 3,223.01	

CHK: It - medgy - gy brn, mot, lam, frm	60% CHK: It - medgy - gy brn, mot, lam, frm	50% CHK: It - medgy - gy brn, mot, lam, frm	60% CHK: It - medgy - gy brn, mot, lam, frm	60% CHK: It - medgy - gy brn, mot, lam, frm
hd, sb ply - sb blk, rthy tex, v calc	- mod hd, sb ply - sb blk, rthy tex, v calc	- mod hd, sb ply - sb blk, rthy tex, v calc	mod hd, sb ply - sb blk, rthy tex, v calc	- mod hd, sb ply - sb blk, rthy tex, v calc
MRL: It - med gy, sme blk, frm - hd, sb	40% MRL: It - med gy, sme blk, frm - hd, sb	50% MRL: It - med gy, sme blk, frm - hd, sb	40% MRL: It - med gy, sme blk, frm - hd, sb	40% MRL: It - med gy, sme blk, frm - hd, sb
sb blk, stly - grty tex, no bent, occ fos	ply - sb blk, stly - grty tex, no bent, occ fos	ply - sb blk, stly - grty tex, no bent, occ fos	ply - sb blk, stly - grty tex, no bent, occ fos	ply - sb blk, stly - grty tex, no bent, occ fos
	frag	frag	frag	frag

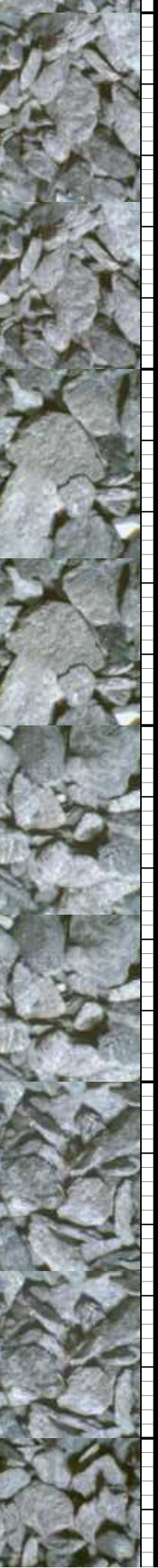


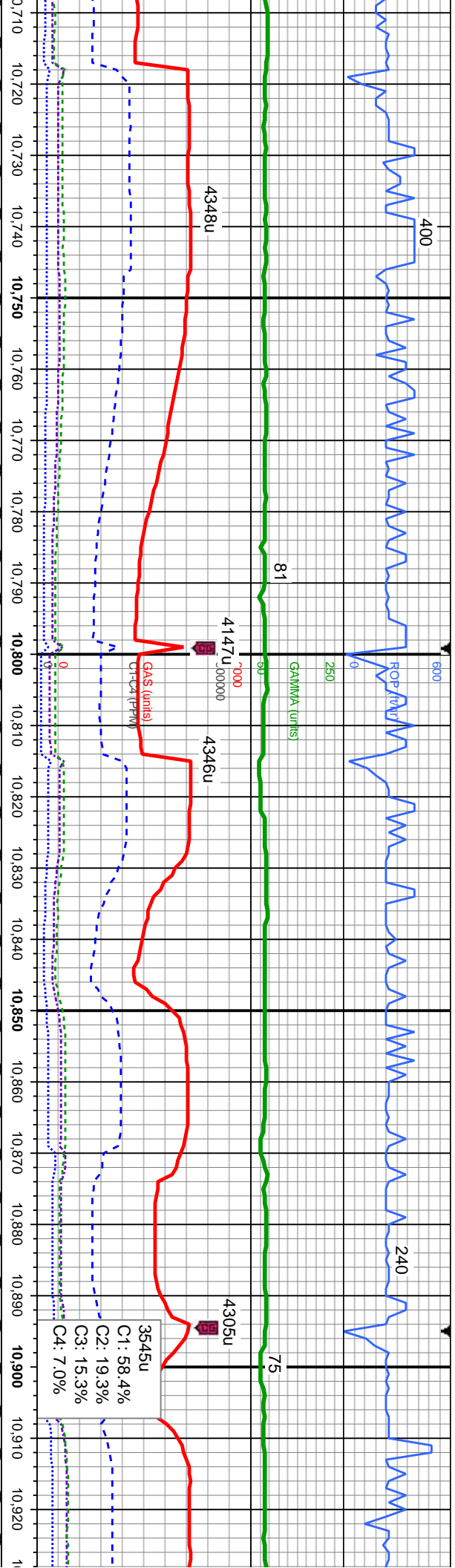




MD: 10,074	MD: 10,169	6500	MD: 10,264
TVD: 6,642.35	TVD: 6,643.32		TVD: 6,645.5
Inclination: 90.25 °	Inclination: 88.58 °		Inclination: 88
Azimuth: 0.07 °	Azimuth: 359.27 °		Azimuth: 359
VS: 3,506.89 f	VS: 3,601.52 f		VS: 3,696.14

TVD (ft)	
80% CHK: It - medgy - gy brn, mot, lam, frm - mod hd, sb pily - sb blkly, rthy tex, v calc 20% MRL: It - med gy, sme blk, frm - hd, sb pily - sb blkly, slty - grty tex, rr bent, occ fos frag 6900	80% CHK: It - r - mod hd, sb pily - mod hd, sb pily - 20% MRL: It - r - pily - sb blkly, slty - rr fos frag
70% CHK: It - medgy - gy brn, mot, lam, frm - mod hd, sb pily - sb blkly, rthy tex, v calc 30% MRL: It - med gy, sme blk, frm - hd, sb pily - sb blkly, slty - grty tex, no bent, tr fos frag	60% CHK: It - medgy - gy brn, mot, lam, frm - mod hd, sb pily - sb blkly, rthy tex, v calc 40% MRL: It - med gy, sme blk, frm - hd, sb pily - sb blkly, slty - grty tex, no bent, abnt fos frag
	80% CHK: It - medgy - gy brn, mot, lam, frm - mod hd, sb pily - sb blkly, rthy tex, v calc 20% MRL: It - med gy, sme blk, frm - hd, sb pily - sb blkly, slty - grty tex, no bent, tr fos frag





MD: 10,738'		MD: 10,833'		MD: 10,922'	
TV: 6,650.22'		TV: 6,651.45'		TV: 6,651.45'	
Inclination: 88.95°		Inclination: 89.57°		Inclination: 89.57°	
Azimuth: 1.47°		Azimuth: 2.19°		Azimuth: 2.19°	
VS: 4,167.76'		VS: 4,262.14'		VS: 4,356.14'	

HK: It - medgy - gy brn, speckl wi wh, m, frm - mod hd, sb pily - sb blk, rthy calc	90% CHK: It - medgy - gy brn, speckl wi wh, mot, lam, frm - mod hd, sb pily - sb blk, rthy tex, v calc	90% CHK: It - medgy - gy brn, speckl wi wh, mot, lam, frm - mod hd, sb pily - sb blk, rthy tex, v calc	90% CHK: It - medgy - gy brn, speckl wi wh, mot, lam, frm - mod hd, sb pily - sb blk, rthy tex, v calc	90% CHK: It - medgy - gy brn, speckl wi wh, mot, lam, frm - mod hd, sb pily - sb blk, rthy tex, v calc
RL: It - med gy, sme blk, frm - hd, sb b blk, sily - grty tex, sme bent, sme g	10% MRL: It - med gy, sme blk, frm - hd, sb pily - sb blk, sily - grty tex, abnt bent, sme fos frag	10% MRL: It - med gy, sme blk, frm - hd, sb pily - sb blk, sily - grty tex, abnt bent, sme fos frag	10% MRL: It - med gy, sme blk, frm - hd, sb pily - sb blk, sily - grty tex, abnt bent, sme fos frag	10% MRL: It - med gy, sme blk, frm - hd, sb pily - sb blk, sily - grty tex, abnt bent, sme fos frag



