

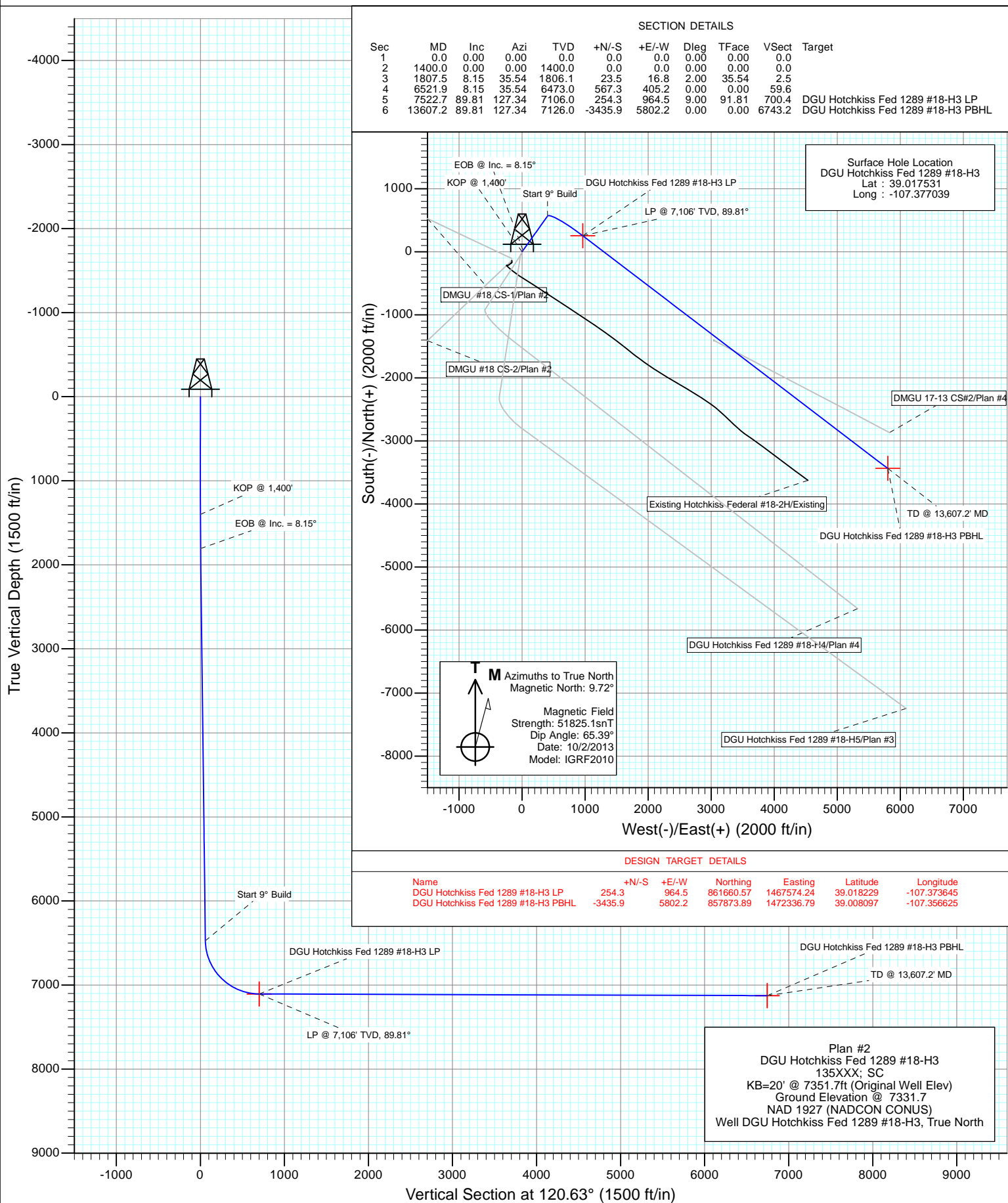


GUNNISON ENERGY CORPORATION

Project: Gunnison County, CO
Site: DGU Hotchkiss Federal #1289 Pad
Well: DGU Hotchkiss Fed 1289 #18-H3
Wellbore: HZ
Design: Plan #2



CATHEDRAL



Cathedral Energy Services

Planning Report

Database:	USA EDM 5000 Multi Users DB	Local Co-ordinate Reference:	Well DGU Hotchkiss Fed 1289 #18-H3
Company:	Gunnison Energy Corporation	TVD Reference:	KB=20' @ 7351.7ft (Original Well Elev)
Project:	Gunnison County, CO	MD Reference:	KB=20' @ 7351.7ft (Original Well Elev)
Site:	DGU Hotchkiss Federal #1289 Pad	North Reference:	True
Well:	DGU Hotchkiss Fed 1289 #18-H3	Survey Calculation Method:	Minimum Curvature
Wellbore:	HZ		
Design:	Plan #2		

Project	Gunnison County, CO		
Map System:	US State Plane 1927 (Exact solution)	System Datum:	Mean Sea Level
Geo Datum:	NAD 1927 (NADCON CONUS)		
Map Zone:	Colorado South 503		

Site		DGU Hotchkiss Federal #1289 Pad			
Site Position:		Northing:	861,388.43 ft	Latitude:	39.017428
From:	Lat/Long	Easting:	1,466,592.96 ft	Longitude:	-107.377078
Position Uncertainty:	0.0 ft	Slot Radius:	13.200 in	Grid Convergence:	-1.15 °

Well	DGU Hotchkiss Fed 1289 #18-H3					
Well Position	+N/-S	0.0 ft	Northing:	861,425.71 ft	Latitude:	39.017531
	+E/-W	0.0 ft	Easting:	1,466,604.80 ft	Longitude:	-107.377039
Position Uncertainty		0.0 ft	Wellhead Elevation:	ft	Ground Level:	7,331.7 ft

Wellbore	HZ				
Magnetics	Model Name	Sample Date	Declination	Dip Angle	Field Strength
			(°)	(°)	(nT)
	IGRF2010	10/2/2013	9.72	65.39	51,825

Design	Plan #2			
Audit Notes:				
Version:	Phase:	PLAN	Tie On Depth:	0.0
Vertical Section:	Depth From (TVD)	+N/-S	+E/-W	Direction
	(ft)	(ft)	(ft)	(°)
	0.0	0.0	0.0	120.63

Plan Sections										
Measured Depth (ft)	Inclination (°)	Azimuth (°)	Vertical Depth (ft)	+N/-S (ft)	+E/-W (ft)	Dogleg Rate (°/100ft)	Build Rate (°/100ft)	Turn Rate (°/100ft)	TFO (°)	Target
0.0	0.00	0.00	0.0	0.0	0.0	0.00	0.00	0.00	0.00	
1,400.0	0.00	0.00	1,400.0	0.0	0.0	0.00	0.00	0.00	0.00	
1,807.5	8.15	35.54	1,806.1	23.5	16.8	2.00	2.00	0.00	35.54	
6,521.9	8.15	35.54	6,473.0	567.3	405.2	0.00	0.00	0.00	0.00	
7,522.7	89.81	127.34	7,106.0	254.3	964.5	9.00	8.16	9.17	91.81	DGU Hotchkiss Fed 1
13,607.2	89.81	127.34	7,126.0	-3,435.9	5,802.2	0.00	0.00	0.00	0.00	DGU Hotchkiss Fed 1

Cathedral Energy Services

Planning Report

Database:	USA EDM 5000 Multi Users DB	Local Co-ordinate Reference:	Well DGU Hotchkiss Fed 1289 #18-H3
Company:	Gunnison Energy Corporation	TVD Reference:	KB=20' @ 7351.7ft (Original Well Elev)
Project:	Gunnison County, CO	MD Reference:	KB=20' @ 7351.7ft (Original Well Elev)
Site:	DGU Hotchkiss Federal #1289 Pad	North Reference:	True
Well:	DGU Hotchkiss Fed 1289 #18-H3	Survey Calculation Method:	Minimum Curvature
Wellbore:	HZ		
Design:	Plan #2		

Planned Survey

Measured Depth (ft)	Inclination (°)	Azimuth (°)	Vertical Depth (ft)	+N/-S (ft)	+E/-W (ft)	Vertical Section (ft)	Dogleg Rate (°/100ft)	Build Rate (°/100ft)	Comments / Formations
0.0	0.00	0.00	0.0	0.0	0.0	0.0	0.00	0.00	
100.0	0.00	0.00	100.0	0.0	0.0	0.0	0.00	0.00	
200.0	0.00	0.00	200.0	0.0	0.0	0.0	0.00	0.00	
300.0	0.00	0.00	300.0	0.0	0.0	0.0	0.00	0.00	
400.0	0.00	0.00	400.0	0.0	0.0	0.0	0.00	0.00	
500.0	0.00	0.00	500.0	0.0	0.0	0.0	0.00	0.00	
600.0	0.00	0.00	600.0	0.0	0.0	0.0	0.00	0.00	
700.0	0.00	0.00	700.0	0.0	0.0	0.0	0.00	0.00	
800.0	0.00	0.00	800.0	0.0	0.0	0.0	0.00	0.00	
900.0	0.00	0.00	900.0	0.0	0.0	0.0	0.00	0.00	
1,000.0	0.00	0.00	1,000.0	0.0	0.0	0.0	0.00	0.00	
1,100.0	0.00	0.00	1,100.0	0.0	0.0	0.0	0.00	0.00	
1,200.0	0.00	0.00	1,200.0	0.0	0.0	0.0	0.00	0.00	
1,300.0	0.00	0.00	1,300.0	0.0	0.0	0.0	0.00	0.00	
1,400.0	0.00	0.00	1,400.0	0.0	0.0	0.0	0.00	0.00	KOP @ 1,400'
1,500.0	2.00	35.54	1,500.0	1.4	1.0	0.1	2.00	2.00	
1,600.0	4.00	35.54	1,599.8	5.7	4.1	0.6	2.00	2.00	
1,700.0	6.00	35.54	1,699.5	12.8	9.1	1.3	2.00	2.00	
1,807.5	8.15	35.54	1,806.1	23.5	16.8	2.5	2.00	2.00	EOB @ Inc. = 8.15°
1,900.0	8.15	35.54	1,897.7	34.2	24.4	3.6	0.00	0.00	
2,000.0	8.15	35.54	1,996.7	45.7	32.7	4.8	0.00	0.00	
2,100.0	8.15	35.54	2,095.7	57.3	40.9	6.0	0.00	0.00	
2,200.0	8.15	35.54	2,194.7	68.8	49.2	7.2	0.00	0.00	
2,300.0	8.15	35.54	2,293.7	80.4	57.4	8.4	0.00	0.00	
2,400.0	8.15	35.54	2,392.6	91.9	65.6	9.7	0.00	0.00	
2,500.0	8.15	35.54	2,491.6	103.4	73.9	10.9	0.00	0.00	
2,600.0	8.15	35.54	2,590.6	115.0	82.1	12.1	0.00	0.00	
2,700.0	8.15	35.54	2,689.6	126.5	90.4	13.3	0.00	0.00	
2,800.0	8.15	35.54	2,788.6	138.0	98.6	14.5	0.00	0.00	
2,900.0	8.15	35.54	2,887.6	149.6	106.8	15.7	0.00	0.00	
3,000.0	8.15	35.54	2,986.6	161.1	115.1	16.9	0.00	0.00	
3,100.0	8.15	35.54	3,085.6	172.6	123.3	18.1	0.00	0.00	
3,200.0	8.15	35.54	3,184.6	184.2	131.5	19.4	0.00	0.00	
3,300.0	8.15	35.54	3,283.6	195.7	139.8	20.6	0.00	0.00	
3,400.0	8.15	35.54	3,382.5	207.2	148.0	21.8	0.00	0.00	
3,500.0	8.15	35.54	3,481.5	218.8	156.3	23.0	0.00	0.00	
3,600.0	8.15	35.54	3,580.5	230.3	164.5	24.2	0.00	0.00	
3,700.0	8.15	35.54	3,679.5	241.8	172.7	25.4	0.00	0.00	
3,800.0	8.15	35.54	3,778.5	253.4	181.0	26.6	0.00	0.00	
3,900.0	8.15	35.54	3,877.5	264.9	189.2	27.8	0.00	0.00	
4,000.0	8.15	35.54	3,976.5	276.4	197.5	29.0	0.00	0.00	
4,100.0	8.15	35.54	4,075.5	288.0	205.7	30.3	0.00	0.00	
4,200.0	8.15	35.54	4,174.5	299.5	213.9	31.5	0.00	0.00	
4,300.0	8.15	35.54	4,273.5	311.0	222.2	32.7	0.00	0.00	
4,400.0	8.15	35.54	4,372.4	322.6	230.4	33.9	0.00	0.00	
4,500.0	8.15	35.54	4,471.4	334.1	238.7	35.1	0.00	0.00	
4,600.0	8.15	35.54	4,570.4	345.7	246.9	36.3	0.00	0.00	
4,700.0	8.15	35.54	4,669.4	357.2	255.1	37.5	0.00	0.00	
4,800.0	8.15	35.54	4,768.4	368.7	263.4	38.7	0.00	0.00	
4,900.0	8.15	35.54	4,867.4	380.3	271.6	40.0	0.00	0.00	
5,000.0	8.15	35.54	4,966.4	391.8	279.9	41.2	0.00	0.00	
5,100.0	8.15	35.54	5,065.4	403.3	288.1	42.4	0.00	0.00	

Cathedral Energy Services

Planning Report

Database:	USA EDM 5000 Multi Users DB	Local Co-ordinate Reference:	Well DGU Hotchkiss Fed 1289 #18-H3
Company:	Gunnison Energy Corporation	TVD Reference:	KB=20' @ 7351.7ft (Original Well Elev)
Project:	Gunnison County, CO	MD Reference:	KB=20' @ 7351.7ft (Original Well Elev)
Site:	DGU Hotchkiss Federal #1289 Pad	North Reference:	True
Well:	DGU Hotchkiss Fed 1289 #18-H3	Survey Calculation Method:	Minimum Curvature
Wellbore:	HZ		
Design:	Plan #2		

Planned Survey

Measured Depth (ft)	Inclination (°)	Azimuth (°)	Vertical Depth (ft)	+N/-S (ft)	+E/-W (ft)	Vertical Section (ft)	Dogleg Rate (°/100ft)	Build Rate (°/100ft)	Comments / Formations
5,200.0	8.15	35.54	5,164.4	414.9	296.3	43.6	0.00	0.00	
5,300.0	8.15	35.54	5,263.4	426.4	304.6	44.8	0.00	0.00	
5,400.0	8.15	35.54	5,362.4	437.9	312.8	46.0	0.00	0.00	
5,500.0	8.15	35.54	5,461.3	449.5	321.0	47.2	0.00	0.00	
5,600.0	8.15	35.54	5,560.3	461.0	329.3	48.4	0.00	0.00	
5,700.0	8.15	35.54	5,659.3	472.5	337.5	49.7	0.00	0.00	
5,800.0	8.15	35.54	5,758.3	484.1	345.8	50.9	0.00	0.00	
5,900.0	8.15	35.54	5,857.3	495.6	354.0	52.1	0.00	0.00	
6,000.0	8.15	35.54	5,956.3	507.1	362.2	53.3	0.00	0.00	
6,100.0	8.15	35.54	6,055.3	518.7	370.5	54.5	0.00	0.00	
6,200.0	8.15	35.54	6,154.3	530.2	378.7	55.7	0.00	0.00	
6,300.0	8.15	35.54	6,253.3	541.7	387.0	56.9	0.00	0.00	
6,400.0	8.15	35.54	6,352.3	553.3	395.2	58.1	0.00	0.00	
6,500.0	8.15	35.54	6,451.2	564.8	403.4	59.3	0.00	0.00	
6,521.9	8.15	35.54	6,473.0	567.3	405.2	59.6	0.00	0.00	Start 9° Build
6,550.0	8.45	52.97	6,500.7	570.2	408.0	60.6	9.00	1.08	
6,600.0	10.57	77.31	6,550.1	573.4	415.5	65.3	9.00	4.24	
6,650.0	13.87	91.94	6,598.9	574.2	425.9	73.9	9.00	6.59	
6,700.0	17.70	100.72	6,647.0	572.6	439.4	86.3	9.00	7.65	
6,750.0	21.78	106.37	6,694.1	568.6	455.8	102.5	9.00	8.16	
6,800.0	25.99	110.29	6,739.8	562.2	475.0	122.2	9.00	8.43	
6,850.0	30.28	113.18	6,783.9	553.4	496.8	145.5	9.00	8.58	
6,900.0	34.62	115.40	6,826.1	542.3	521.3	172.2	9.00	8.68	
6,950.0	38.99	117.18	6,866.1	529.1	548.1	202.0	9.00	8.74	
7,000.0	43.39	118.65	6,903.7	513.6	577.2	234.9	9.00	8.79	
7,050.0	47.80	119.91	6,938.7	496.1	608.3	270.6	9.00	8.82	
7,100.0	52.22	120.99	6,970.8	476.7	641.3	308.9	9.00	8.84	
7,150.0	56.65	121.96	6,999.9	455.5	676.0	349.6	9.00	8.86	
7,200.0	61.09	122.83	7,025.7	432.6	712.1	392.4	9.00	8.88	
7,250.0	65.53	123.63	7,048.2	408.1	749.5	437.0	9.00	8.89	
7,300.0	69.98	124.37	7,067.1	382.2	787.8	483.2	9.00	8.89	
7,350.0	74.43	125.08	7,082.4	355.1	827.0	530.6	9.00	8.90	
7,400.0	78.88	125.75	7,093.9	326.9	866.6	579.1	9.00	8.90	
7,450.0	83.34	126.41	7,101.7	297.8	906.5	628.3	9.00	8.91	
7,500.0	87.79	127.05	7,105.5	268.0	946.5	677.8	9.00	8.91	
7,522.7	89.81	127.34	7,106.0	254.3	964.5	700.4	9.00	8.91	LP @ 7,106' TVD, 89.81°
7,600.0	89.81	127.34	7,106.3	207.4	1,026.0	777.1	0.00	0.00	
7,700.0	89.81	127.34	7,106.6	146.8	1,105.5	876.4	0.00	0.00	
7,800.0	89.81	127.34	7,106.9	86.1	1,185.0	975.8	0.00	0.00	
7,900.0	89.81	127.34	7,107.2	25.5	1,264.5	1,075.1	0.00	0.00	
8,000.0	89.81	127.34	7,107.6	-35.2	1,344.0	1,174.4	0.00	0.00	
8,100.0	89.81	127.34	7,107.9	-95.8	1,423.5	1,273.7	0.00	0.00	
8,200.0	89.81	127.34	7,108.2	-156.5	1,503.0	1,373.0	0.00	0.00	
8,300.0	89.81	127.34	7,108.6	-217.1	1,582.5	1,472.3	0.00	0.00	
8,400.0	89.81	127.34	7,108.9	-277.8	1,662.1	1,571.7	0.00	0.00	
8,500.0	89.81	127.34	7,109.2	-338.4	1,741.6	1,671.0	0.00	0.00	
8,600.0	89.81	127.34	7,109.5	-399.1	1,821.1	1,770.3	0.00	0.00	
8,700.0	89.81	127.34	7,109.9	-459.7	1,900.6	1,869.6	0.00	0.00	
8,800.0	89.81	127.34	7,110.2	-520.4	1,980.1	1,968.9	0.00	0.00	
8,900.0	89.81	127.34	7,110.5	-581.0	2,059.6	2,068.2	0.00	0.00	
9,000.0	89.81	127.34	7,110.9	-641.7	2,139.1	2,167.6	0.00	0.00	
9,100.0	89.81	127.34	7,111.2	-702.3	2,218.6	2,266.9	0.00	0.00	

Cathedral Energy Services

Planning Report

Database:	USA EDM 5000 Multi Users DB	Local Co-ordinate Reference:	Well DGU Hotchkiss Fed 1289 #18-H3
Company:	Gunnison Energy Corporation	TVD Reference:	KB=20' @ 7351.7ft (Original Well Elev)
Project:	Gunnison County, CO	MD Reference:	KB=20' @ 7351.7ft (Original Well Elev)
Site:	DGU Hotchkiss Federal #1289 Pad	North Reference:	True
Well:	DGU Hotchkiss Fed 1289 #18-H3	Survey Calculation Method:	Minimum Curvature
Wellbore:	HZ		
Design:	Plan #2		

Planned Survey

Measured Depth (ft)	Inclination (°)	Azimuth (°)	Vertical Depth (ft)	+N/-S (ft)	+E/-W (ft)	Vertical Section (ft)	Dogleg Rate (°/100ft)	Build Rate (°/100ft)	Comments / Formations
9,200.0	89.81	127.34	7,111.5	-763.0	2,298.1	2,366.2	0.00	0.00	
9,300.0	89.81	127.34	7,111.8	-823.6	2,377.6	2,465.5	0.00	0.00	
9,400.0	89.81	127.34	7,112.2	-884.3	2,457.1	2,564.8	0.00	0.00	
9,500.0	89.81	127.34	7,112.5	-944.9	2,536.6	2,664.1	0.00	0.00	
9,600.0	89.81	127.34	7,112.8	-1,005.6	2,616.2	2,763.4	0.00	0.00	
9,700.0	89.81	127.34	7,113.2	-1,066.2	2,695.7	2,862.8	0.00	0.00	
9,800.0	89.81	127.34	7,113.5	-1,126.9	2,775.2	2,962.1	0.00	0.00	
9,900.0	89.81	127.34	7,113.8	-1,187.5	2,854.7	3,061.4	0.00	0.00	
10,000.0	89.81	127.34	7,114.1	-1,248.2	2,934.2	3,160.7	0.00	0.00	
10,100.0	89.81	127.34	7,114.5	-1,308.8	3,013.7	3,260.0	0.00	0.00	
10,200.0	89.81	127.34	7,114.8	-1,369.5	3,093.2	3,359.3	0.00	0.00	
10,300.0	89.81	127.34	7,115.1	-1,430.1	3,172.7	3,458.7	0.00	0.00	
10,400.0	89.81	127.34	7,115.5	-1,490.8	3,252.2	3,558.0	0.00	0.00	
10,500.0	89.81	127.34	7,115.8	-1,551.4	3,331.7	3,657.3	0.00	0.00	
10,600.0	89.81	127.34	7,116.1	-1,612.1	3,411.2	3,756.6	0.00	0.00	
10,700.0	89.81	127.34	7,116.4	-1,672.7	3,490.7	3,855.9	0.00	0.00	
10,800.0	89.81	127.34	7,116.8	-1,733.4	3,570.2	3,955.2	0.00	0.00	
10,900.0	89.81	127.34	7,117.1	-1,794.0	3,649.8	4,054.6	0.00	0.00	
11,000.0	89.81	127.34	7,117.4	-1,854.7	3,729.3	4,153.9	0.00	0.00	
11,100.0	89.81	127.34	7,117.8	-1,915.3	3,808.8	4,253.2	0.00	0.00	
11,200.0	89.81	127.34	7,118.1	-1,976.0	3,888.3	4,352.5	0.00	0.00	
11,300.0	89.81	127.34	7,118.4	-2,036.6	3,967.8	4,451.8	0.00	0.00	
11,400.0	89.81	127.34	7,118.7	-2,097.3	4,047.3	4,551.1	0.00	0.00	
11,500.0	89.81	127.34	7,119.1	-2,157.9	4,126.8	4,650.4	0.00	0.00	
11,600.0	89.81	127.34	7,119.4	-2,218.6	4,206.3	4,749.8	0.00	0.00	
11,700.0	89.81	127.34	7,119.7	-2,279.2	4,285.8	4,849.1	0.00	0.00	
11,800.0	89.81	127.34	7,120.1	-2,339.9	4,365.3	4,948.4	0.00	0.00	
11,900.0	89.81	127.34	7,120.4	-2,400.5	4,444.8	5,047.7	0.00	0.00	
12,000.0	89.81	127.34	7,120.7	-2,461.2	4,524.3	5,147.0	0.00	0.00	
12,100.0	89.81	127.34	7,121.0	-2,521.8	4,603.9	5,246.3	0.00	0.00	
12,200.0	89.81	127.34	7,121.4	-2,582.5	4,683.4	5,345.7	0.00	0.00	
12,300.0	89.81	127.34	7,121.7	-2,643.1	4,762.9	5,445.0	0.00	0.00	
12,400.0	89.81	127.34	7,122.0	-2,703.8	4,842.4	5,544.3	0.00	0.00	
12,500.0	89.81	127.34	7,122.4	-2,764.4	4,921.9	5,643.6	0.00	0.00	
12,600.0	89.81	127.34	7,122.7	-2,825.1	5,001.4	5,742.9	0.00	0.00	
12,700.0	89.81	127.34	7,123.0	-2,885.7	5,080.9	5,842.2	0.00	0.00	
12,800.0	89.81	127.34	7,123.3	-2,946.4	5,160.4	5,941.6	0.00	0.00	
12,900.0	89.81	127.34	7,123.7	-3,007.0	5,239.9	6,040.9	0.00	0.00	
13,000.0	89.81	127.34	7,124.0	-3,067.7	5,319.4	6,140.2	0.00	0.00	
13,100.0	89.81	127.34	7,124.3	-3,128.3	5,398.9	6,239.5	0.00	0.00	
13,200.0	89.81	127.34	7,124.7	-3,189.0	5,478.4	6,338.8	0.00	0.00	
13,300.0	89.81	127.34	7,125.0	-3,249.6	5,558.0	6,438.1	0.00	0.00	
13,400.0	89.81	127.34	7,125.3	-3,310.3	5,637.5	6,537.4	0.00	0.00	
13,500.0	89.81	127.34	7,125.6	-3,370.9	5,717.0	6,636.8	0.00	0.00	
13,607.2	89.81	127.34	7,126.0	-3,435.9	5,802.2	6,743.2	0.00	0.00	TD @ 13,607.2' MD

Cathedral Energy Services

Planning Report

Database:	USA EDM 5000 Multi Users DB	Local Co-ordinate Reference:	Well DGU Hotchkiss Fed 1289 #18-H3
Company:	Gunnison Energy Corporation	TVD Reference:	KB=20' @ 7351.7ft (Original Well Elev)
Project:	Gunnison County, CO	MD Reference:	KB=20' @ 7351.7ft (Original Well Elev)
Site:	DGU Hotchkiss Federal #1289 Pad	North Reference:	True
Well:	DGU Hotchkiss Fed 1289 #18-H3	Survey Calculation Method:	Minimum Curvature
Wellbore:	HZ		
Design:	Plan #2		

Targets									
Target Name	Dip Angle	Dip Dir.	TVD	+N/-S	+E/-W	Northing	Easting	Latitude	Longitude
- hit/miss target	(°)	(°)	(ft)	(ft)	(ft)	(ft)	(ft)		
- Shape									
DGU Hotchkiss Fed 128	0.00	358.85	7,106.0	254.3	964.5	861,660.57	1,467,574.24	39.018229	-107.373645
- plan hits target center									
- Point									
DGU Hotchkiss Fed 128	0.00	358.86	7,126.0	-3,435.9	5,802.2	857,873.89	1,472,336.79	39.008097	-107.356625
- plan hits target center									
- Point									

Plan Annotations					
Measured Depth	Vertical Depth	Local Coordinates			
(ft)	(ft)	+N/-S	+E/-W	Comment	
		(ft)	(ft)		
1,400.0	1,400.0	0.0	0.0	KOP @ 1,400'	
1,807.5	1,806.1	23.5	16.8	EOB @ Inc. = 8.15°	
6,521.9	6,473.0	567.3	405.2	Start 9° Build	
7,522.7	7,106.0	254.3	964.5	LP @ 7,106' TVD, 89.81°	
13,607.2	7,126.0	-3,435.9	5,802.2	TD @ 13,607.2' MD	

Gunnison Energy Corporation

Gunnison County, CO

DGU Hotchkiss Federal #1289 Pad

DGU Hotchkiss Fed 1289 #18-H3

HZ

Plan #2

Anticollision Report

18 December, 2013

Cathedral Energy Services

Anticollision Report

Company:	Gunnison Energy Corporation	Local Co-ordinate Reference:	Well DGU Hotchkiss Fed 1289 #18-H3
Project:	Gunnison County, CO	TVD Reference:	KB=20' @ 7351.7ft (Original Well Elev)
Reference Site:	DGU Hotchkiss Federal #1289 Pad	MD Reference:	KB=20' @ 7351.7ft (Original Well Elev)
Site Error:	0.0ft	North Reference:	True
Reference Well:	DGU Hotchkiss Fed 1289 #18-H3	Survey Calculation Method:	Minimum Curvature
Well Error:	0.0ft	Output errors are at	2.00 sigma
Reference Wellbore	HZ	Database:	USA EDM 5000 Multi Users DB
Reference Design:	Plan #2	Offset TVD Reference:	Offset Datum

Reference	Plan #2
Filter type:	GLOBAL FILTER APPLIED: All wellpaths within 200'+ 100/1000 of reference
Interpolation Method:	MD Interval 100.0ft
Depth Range:	Unlimited
Results Limited by:	Maximum center-center distance of 500.0ft
Warning Levels Evaluated at:	2.00 Sigma
Error Model:	Systematic Ellipse
Scan Method:	Closest Approach 3D
Error Surface:	Elliptical Conic

Survey Tool Program		Date	12/18/2013		
From (ft)	To (ft)	Survey (Wellbore)	Tool Name	Description	
0.0	13,607.2	Plan #2 (HZ)	MWD	MWD	

Summary						
Site Name	Reference Measured Depth (ft)	Offset Measured Depth (ft)	Distance Between Centres (ft)	Distance Between Ellipses (ft)	Separation Factor	Warning
Offset Well - Wellbore - Design						
Deadman Gulch Unit						
DMGU #18 CS-1 - OH - Plan #2	433.2	433.5	193.8	192.4	134.306	CC, ES
DMGU #18 CS-1 - OH - Plan #2	1,000.0	874.5	315.8	311.2	69.287	SF
DMGU #18 CS-2 - OH - Plan #2	366.6	366.9	209.9	208.7	173.420	CC
DMGU #18 CS-2 - OH - Plan #2	400.0	400.0	209.9	208.6	158.231	ES
DMGU #18 CS-2 - OH - Plan #2	1,000.0	812.0	387.3	383.7	106.760	SF
DMGU 17-13 CS#2 - OH - Plan #4						Out of range
Existing Hotchkiss Federal #18-2H - Existing - Existing	103.1	103.4	214.7	214.6	1,479.044	CC
Existing Hotchkiss Federal #18-2H - Existing - Existing	200.0	200.0	214.9	214.5	683.422	ES
Existing Hotchkiss Federal #18-2H - Existing - Existing	1,800.0	1,795.8	260.4	257.4	84.229	SF
DGU Hotchkiss Federal #1289 Pad						
DGU Hotchkiss Fed 1289 #18-H4 - HZ - Plan #4	1,166.7	1,166.7	39.1	35.1	9.777	CC
DGU Hotchkiss Fed 1289 #18-H4 - HZ - Plan #4	1,200.0	1,200.0	39.1	35.0	9.500	ES
DGU Hotchkiss Fed 1289 #18-H4 - HZ - Plan #4	1,300.0	1,298.7	40.8	36.3	9.132	SF
DGU Hotchkiss Fed 1289 #18-H5 - HZ - Plan #3	1,000.0	1,000.0	51.3	47.9	14.992	CC, ES
DGU Hotchkiss Fed 1289 #18-H5 - HZ - Plan #3	1,100.0	1,098.3	52.9	49.1	14.046	SF

Cathedral Energy Services

Anticollision Report

Company:	Gunnison Energy Corporation	Local Co-ordinate Reference:	Well DGU Hotchkiss Fed 1289 #18-H3
Project:	Gunnison County, CO	TVD Reference:	KB=20' @ 7351.7ft (Original Well Elev)
Reference Site:	DGU Hotchkiss Federal #1289 Pad	MD Reference:	KB=20' @ 7351.7ft (Original Well Elev)
Site Error:	0.0ft	North Reference:	True
Reference Well:	DGU Hotchkiss Fed 1289 #18-H3	Survey Calculation Method:	Minimum Curvature
Well Error:	0.0ft	Output errors are at	2.00 sigma
Reference Wellbore	HZ	Database:	USA EDM 5000 Multi Users DB
Reference Design:	Plan #2	Offset TVD Reference:	Offset Datum

Offset Design													Offset Site Error:	0.0 ft
Survey Program: 0-MWD													Offset Well Error:	0.0 ft
Reference		Offset		Semi Major Axis			Distance						Warning	
Measured Depth (ft)	Vertical Depth (ft)	Measured Depth (ft)	Vertical Depth (ft)	Reference (ft)	Offset (ft)	Highside Toolface (°)	Offset Wellbore Centre +N/-S (ft)	+E/-W (ft)	Between Centres (ft)	Between Ellipses (ft)	Total Uncertainty Axis	Separation Factor		
0.0	0.0	0.3	0.3	0.0	0.0	-123.30	-106.4	-162.0	193.8					
100.0	100.0	100.3	100.3	0.1	0.1	-123.30	-106.4	-162.0	193.8	193.5	0.28	692.589		
200.0	200.0	200.3	200.3	0.3	0.3	-123.30	-106.4	-162.0	193.8	193.2	0.63	308.169		
300.0	300.0	300.3	300.3	0.5	0.5	-123.30	-106.4	-162.0	193.8	192.8	0.98	198.173		
400.0	400.0	400.3	400.3	0.7	0.7	-123.30	-106.4	-162.0	193.8	192.5	1.33	146.045		
433.2	433.2	433.5	433.5	0.7	0.7	-123.30	-106.4	-162.0	193.8	192.4	1.44	134.306	CC, ES	
500.0	500.0	494.0	494.0	0.8	0.8	-122.96	-105.8	-163.2	194.6	192.9	1.67	116.744		
600.0	600.0	580.3	579.6	1.0	1.0	-120.41	-101.3	-172.7	201.3	199.2	2.04	98.881		
700.0	700.0	662.9	659.8	1.2	1.3	-116.03	-93.0	-190.4	215.7	213.2	2.51	85.983		
800.0	800.0	740.1	732.2	1.4	1.8	-110.84	-81.6	-214.4	239.3	236.2	3.11	76.878		
900.0	900.0	810.7	795.7	1.5	2.3	-105.75	-68.3	-242.4	272.7	268.9	3.81	71.528		
1,000.0	1,000.0	874.5	850.1	1.7	2.9	-101.24	-54.1	-272.4	315.8	311.2	4.56	69.287	SF	
1,100.0	1,100.0	931.4	896.0	1.9	3.6	-97.48	-39.7	-302.8	367.5	362.2	5.30	69.327		
1,200.0	1,200.0	984.6	936.3	2.1	4.3	-94.27	-24.9	-334.1	426.6	420.5	6.04	70.641		
1,300.0	1,300.0	1,054.0	987.3	2.2	5.2	-90.73	-4.8	-376.7	489.8	482.9	6.94	70.534		

Cathedral Energy Services

Anticollision Report

Company:	Gunnison Energy Corporation	Local Co-ordinate Reference:	Well DGU Hotchkiss Fed 1289 #18-H3
Project:	Gunnison County, CO	TVD Reference:	KB=20' @ 7351.7ft (Original Well Elev)
Reference Site:	DGU Hotchkiss Federal #1289 Pad	MD Reference:	KB=20' @ 7351.7ft (Original Well Elev)
Site Error:	0.0ft	North Reference:	True
Reference Well:	DGU Hotchkiss Fed 1289 #18-H3	Survey Calculation Method:	Minimum Curvature
Well Error:	0.0ft	Output errors are at	2.00 sigma
Reference Wellbore	HZ	Database:	USA EDM 5000 Multi Users DB
Reference Design:	Plan #2	Offset TVD Reference:	Offset Datum

Offset Design													Offset Site Error:	0.0 ft
Survey Program: 0-MWD													Offset Well Error:	0.0 ft
Reference		Offset		Semi Major Axis		Distance		Total		Separation		Warning		
Measured Depth (ft)	Vertical Depth (ft)	Measured Depth (ft)	Vertical Depth (ft)	Reference (ft)	Offset (ft)	Highside Toolface (°)	Offset Wellbore Centre +N/-S (ft)	+E/-W (ft)	Between Centres (ft)	Between Ellipses (ft)	Uncertainty Axis	Factor		
0.0	0.0	0.3	0.3	0.0	0.0	-130.21	-135.5	-160.3	209.9					
100.0	100.0	100.3	100.3	0.1	0.1	-130.21	-135.5	-160.3	209.9	209.6	0.28	750.080		
200.0	200.0	200.3	200.3	0.3	0.3	-130.21	-135.5	-160.3	209.9	209.3	0.63	333.750		
300.0	300.0	300.3	300.3	0.5	0.5	-130.21	-135.5	-160.3	209.9	208.9	0.98	214.624		
366.6	366.6	366.9	366.9	0.6	0.6	-130.21	-135.5	-160.3	209.9	208.7	1.21	173.420 CC		
400.0	400.0	400.0	400.0	0.7	0.7	-130.21	-135.5	-160.3	209.9	208.6	1.33	158.231 ES		
500.0	500.0	477.3	477.1	0.8	0.8	-130.28	-138.4	-163.3	215.3	213.7	1.64	131.280		
600.0	600.0	550.0	548.9	1.0	1.0	-130.44	-146.3	-171.6	231.3	229.3	1.96	118.051		
700.0	700.0	624.7	621.0	1.2	1.3	-130.69	-159.6	-185.6	257.3	255.0	2.33	110.577		
800.0	800.0	692.3	684.3	1.4	1.7	-130.94	-176.0	-202.9	292.6	289.9	2.72	107.455		
900.0	900.0	750.0	736.2	1.5	2.1	-131.16	-193.3	-221.1	336.4	333.2	3.14	107.278		
1,000.0	1,000.0	812.0	789.7	1.7	2.7	-131.39	-214.9	-243.9	387.3	383.7	3.63	106.760 SF		
1,100.0	1,100.0	863.8	832.1	1.9	3.3	-131.57	-235.4	-265.4	444.7	440.6	4.11	108.154		

Cathedral Energy Services

Anticollision Report

Company:	Gunnison Energy Corporation	Local Co-ordinate Reference:	Well DGU Hotchkiss Fed 1289 #18-H3
Project:	Gunnison County, CO	TVD Reference:	KB=20' @ 7351.7ft (Original Well Elev)
Reference Site:	DGU Hotchkiss Federal #1289 Pad	MD Reference:	KB=20' @ 7351.7ft (Original Well Elev)
Site Error:	0.0ft	North Reference:	True
Reference Well:	DGU Hotchkiss Fed 1289 #18-H3	Survey Calculation Method:	Minimum Curvature
Well Error:	0.0ft	Output errors are at	2.00 sigma
Reference Wellbore	HZ	Database:	USA EDM 5000 Multi Users DB
Reference Design:	Plan #2	Offset TVD Reference:	Offset Datum

Offset Design														Offset Site Error:	0.0 ft
Survey Program: 100-														Offset Well Error:	0.0 ft
Reference															
		Offset		Semi Major Axis				Distance							
Measured Depth (ft)	Vertical Depth (ft)	Measured Depth (ft)	Vertical Depth (ft)	Reference (ft)	Offset (ft)	Highside Toolface (°)	Offset Wellbore Centre +N/-S (ft)	+E/-W (ft)	Between Centres (ft)	Between Ellipses (ft)	Total Uncertainty Axis	Separation Factor	Warning		
0.0	0.0	0.3	0.3	0.0	0.0	-130.80	-140.3	-162.6	214.7						
100.0	100.0	100.3	100.3	0.1	0.0	-130.77	-140.2	-162.6	214.7	214.6	0.14	1,535.486			
103.1	103.1	103.4	103.4	0.1	0.0	-130.76	-140.2	-162.6	214.7	214.6	0.15	1,479.044	CC		
200.0	200.0	200.0	200.0	0.3	0.0	-130.79	-140.4	-162.7	214.9	214.5	0.31	683.422	ES		
300.0	300.0	298.8	298.8	0.5	0.0	-130.94	-141.1	-162.7	215.3	214.8	0.49	440.399			
400.0	400.0	398.6	398.6	0.7	0.0	-131.26	-142.5	-162.4	216.1	215.4	0.66	325.655			
500.0	500.0	498.1	498.1	0.8	0.0	-131.78	-144.5	-161.8	217.0	216.1	0.84	258.909			
600.0	600.0	597.6	597.5	1.0	0.0	-132.35	-146.9	-161.2	218.1	217.1	1.01	215.415			
700.0	700.0	697.6	697.5	1.2	0.0	-132.95	-149.5	-160.6	219.4	218.2	1.19	184.827			
800.0	800.0	797.5	797.4	1.4	0.0	-133.42	-151.7	-160.3	220.7	219.3	1.36	162.097			
900.0	900.0	898.1	898.0	1.5	0.0	-133.86	-153.7	-160.0	221.9	220.4	1.54	144.459			
1,000.0	1,000.0	997.3	997.1	1.7	0.0	-134.29	-155.8	-159.7	223.2	221.4	1.71	130.452			
1,100.0	1,100.0	1,097.5	1,097.3	1.9	0.0	-134.64	-157.8	-159.8	224.6	222.7	1.89	119.114			
1,200.0	1,200.0	1,197.9	1,197.7	2.1	0.0	-134.98	-159.6	-159.7	225.8	223.7	2.06	109.622			
1,300.0	1,300.0	1,297.7	1,297.5	2.2	0.0	-135.35	-161.5	-159.5	227.0	224.7	2.23	101.590			
1,400.0	1,400.0	1,398.0	1,397.8	2.4	0.0	-135.70	-163.3	-159.3	228.1	225.7	2.41	94.714			
1,500.0	1,500.0	1,497.4	1,497.1	2.6	0.0	-171.55	-164.9	-159.5	231.1	228.5	2.58	89.493			
1,600.0	1,599.8	1,598.5	1,598.2	2.8	0.0	-171.89	-166.2	-159.7	237.4	234.6	2.75	86.195			
1,700.0	1,699.5	1,696.9	1,696.6	3.0	0.0	-172.23	-167.1	-160.1	247.0	244.1	2.92	84.496			
1,800.0	1,798.7	1,795.8	1,795.5	3.2	0.0	-172.57	-168.2	-161.0	260.4	257.4	3.09	84.229	SF		
1,900.0	1,897.7	1,895.0	1,894.7	3.4	0.0	-173.01	-169.3	-161.7	275.8	272.5	3.27	84.400			
2,000.0	1,996.7	1,993.9	1,993.6	3.6	0.0	-173.43	-170.4	-162.2	291.0	287.6	3.44	84.510			
2,100.0	2,095.7	2,092.9	2,092.6	3.9	0.0	-173.73	-171.2	-162.9	306.2	302.6	3.62	84.602			
2,200.0	2,194.7	2,192.3	2,192.0	4.1	0.0	-173.96	-171.8	-163.8	321.3	317.5	3.80	84.655			
2,300.0	2,293.7	2,291.4	2,291.1	4.4	0.0	-174.11	-172.1	-164.8	336.3	332.3	3.97	84.671			
2,400.0	2,392.6	2,389.7	2,389.4	4.7	0.0	-174.25	-172.3	-165.9	351.3	347.2	4.15	84.697			
2,500.0	2,491.6	2,488.2	2,487.8	4.9	0.0	-174.44	-173.0	-166.7	366.5	362.2	4.32	84.759			
2,600.0	2,590.6	2,585.1	2,584.7	5.2	0.0	-174.65	-174.0	-167.5	381.9	377.4	4.50	84.879			
2,700.0	2,689.6	2,683.9	2,683.6	5.5	0.0	-174.85	-175.3	-168.5	397.7	393.0	4.68	85.060			
2,800.0	2,788.6	2,782.7	2,782.3	5.8	0.0	-175.08	-176.8	-169.3	413.4	408.5	4.85	85.217			
2,900.0	2,887.6	2,881.0	2,880.6	6.0	0.0	-175.25	-178.0	-170.3	429.1	424.1	5.03	85.372			
3,000.0	2,986.6	2,978.8	2,978.4	6.3	0.0	-175.35	-179.1	-171.7	445.0	439.8	5.20	85.544			
3,100.0	3,085.6	3,078.4	3,078.0	6.6	0.0	-175.47	-180.4	-173.1	461.0	455.6	5.38	85.719			
3,200.0	3,184.6	3,178.8	3,178.4	6.9	0.0	-175.58	-181.4	-174.2	476.7	471.1	5.55	85.830			
3,300.0	3,283.6	3,277.0	3,276.5	7.2	0.0	-175.68	-182.3	-175.3	492.2	486.4	5.73	85.905			

Cathedral Energy Services

Anticollision Report

Company:	Gunnison Energy Corporation	Local Co-ordinate Reference:	Well DGU Hotchkiss Fed 1289 #18-H3
Project:	Gunnison County, CO	TVD Reference:	KB=20' @ 7351.7ft (Original Well Elev)
Reference Site:	DGU Hotchkiss Federal #1289 Pad	MD Reference:	KB=20' @ 7351.7ft (Original Well Elev)
Site Error:	0.0ft	North Reference:	True
Reference Well:	DGU Hotchkiss Fed 1289 #18-H3	Survey Calculation Method:	Minimum Curvature
Well Error:	0.0ft	Output errors are at	2.00 sigma
Reference Wellbore	HZ	Database:	USA EDM 5000 Multi Users DB
Reference Design:	Plan #2	Offset TVD Reference:	Offset Datum

Offset Design DGU Hotchkiss Federal #1289 Pad - DGU Hotchkiss Fed 1289 #18-H4 - HZ - Plan #4													Offset Site Error: 0.0 ft	
Survey Program: 0-MWD													Offset Well Error: 0.0 ft	
Reference		Offset		Semi Major Axis			Distance							Warning
Measured Depth (ft)	Vertical Depth (ft)	Measured Depth (ft)	Vertical Depth (ft)	Reference (ft)	Offset (ft)	Highside Toolface (°)	Offset Wellbore Centre +N/-S (ft)	+E/-W (ft)	Between Centres (ft)	Between Ellipses (ft)	Total Uncertainty Axis	Separation Factor		
0.0	0.0	0.0	0.0	0.0	0.0	-163.55	-37.5	-11.1	39.1					
100.0	100.0	100.0	100.0	0.1	0.1	-163.55	-37.5	-11.1	39.1	38.9	0.28	140.106		
200.0	200.0	200.0	200.0	0.3	0.3	-163.55	-37.5	-11.1	39.1	38.5	0.63	62.276		
300.0	300.0	300.0	300.0	0.5	0.5	-163.55	-37.5	-11.1	39.1	38.2	0.98	40.036		
400.0	400.0	400.0	400.0	0.7	0.7	-163.55	-37.5	-11.1	39.1	37.8	1.33	29.500		
500.0	500.0	500.0	500.0	0.8	0.8	-163.55	-37.5	-11.1	39.1	37.5	1.68	23.355		
600.0	600.0	600.0	600.0	1.0	1.0	-163.55	-37.5	-11.1	39.1	37.1	2.02	19.328		
700.0	700.0	700.0	700.0	1.2	1.2	-163.55	-37.5	-11.1	39.1	36.8	2.37	16.486		
800.0	800.0	800.0	800.0	1.4	1.4	-163.55	-37.5	-11.1	39.1	36.4	2.72	14.372		
900.0	900.0	900.0	900.0	1.5	1.5	-163.55	-37.5	-11.1	39.1	36.1	3.07	12.739		
1,000.0	1,000.0	1,000.0	1,000.0	1.7	1.7	-163.55	-37.5	-11.1	39.1	35.7	3.42	11.439		
1,100.0	1,100.0	1,100.0	1,100.0	1.9	1.9	-163.55	-37.5	-11.1	39.1	35.4	3.77	10.380		
1,166.7	1,166.7	1,166.7	1,166.7	2.0	2.0	-163.55	-37.5	-11.1	39.1	35.1	4.00	9.777 CC		
1,200.0	1,200.0	1,200.0	1,200.0	2.1	2.1	-163.55	-37.5	-11.1	39.1	35.0	4.12	9.500 ES		
1,300.0	1,300.0	1,298.7	1,298.7	2.2	2.2	-162.85	-39.0	-12.0	40.8	36.3	4.47	9.132 SF		
1,400.0	1,400.0	1,397.1	1,397.0	2.4	2.4	-161.08	-43.2	-14.8	45.8	40.9	4.82	9.502		
1,500.0	1,500.0	1,494.9	1,494.4	2.6	2.6	165.99	-50.2	-19.4	55.8	50.6	5.16	10.823		
1,600.0	1,599.8	1,591.3	1,590.1	2.8	2.8	168.78	-59.8	-25.7	72.6	67.1	5.49	13.224		
1,700.0	1,699.5	1,685.7	1,683.3	3.0	3.0	171.06	-71.9	-33.6	96.2	90.4	5.82	16.530		
1,800.0	1,798.7	1,777.4	1,773.5	3.2	3.3	172.74	-86.0	-42.9	126.3	120.1	6.13	20.590		
1,900.0	1,897.7	1,871.2	1,865.4	3.4	3.6	173.98	-101.9	-53.4	160.0	153.6	6.47	24.752		
2,000.0	1,996.7	1,965.3	1,957.5	3.6	3.9	174.80	-117.8	-63.8	193.9	187.1	6.80	28.510		
2,100.0	2,095.7	2,059.3	2,049.6	3.9	4.2	175.38	-133.7	-74.3	227.8	220.6	7.14	31.919		
2,200.0	2,194.7	2,153.4	2,141.7	4.1	4.5	175.80	-149.6	-84.7	261.6	254.2	7.47	35.025		
2,300.0	2,293.7	2,247.5	2,233.8	4.4	4.8	176.13	-165.6	-95.2	295.5	287.7	7.80	37.866		
2,400.0	2,392.6	2,341.5	2,326.0	4.7	5.2	176.39	-181.5	-105.7	329.4	321.3	8.14	40.475		
2,500.0	2,491.6	2,435.6	2,418.1	4.9	5.5	176.61	-197.4	-116.1	363.3	354.9	8.47	42.879		
2,600.0	2,590.6	2,529.7	2,510.2	5.2	5.8	176.78	-213.3	-126.6	397.2	388.4	8.81	45.101		
2,700.0	2,689.6	2,623.8	2,602.3	5.5	6.2	176.93	-229.2	-137.1	431.1	422.0	9.14	47.162		
2,800.0	2,788.6	2,717.8	2,694.4	5.8	6.5	177.06	-245.2	-147.5	465.1	455.6	9.48	49.077		
2,900.0	2,887.6	2,811.9	2,786.6	6.0	6.9	177.17	-261.1	-158.0	499.0	489.2	9.81	50.862		

Cathedral Energy Services

Anticollision Report

Company:	Gunnison Energy Corporation	Local Co-ordinate Reference:	Well DGU Hotchkiss Fed 1289 #18-H3
Project:	Gunnison County, CO	TVD Reference:	KB=20' @ 7351.7ft (Original Well Elev)
Reference Site:	DGU Hotchkiss Federal #1289 Pad	MD Reference:	KB=20' @ 7351.7ft (Original Well Elev)
Site Error:	0.0ft	North Reference:	True
Reference Well:	DGU Hotchkiss Fed 1289 #18-H3	Survey Calculation Method:	Minimum Curvature
Well Error:	0.0ft	Output errors are at	2.00 sigma
Reference Wellbore	HZ	Database:	USA EDM 5000 Multi Users DB
Reference Design:	Plan #2	Offset TVD Reference:	Offset Datum

Offset Design		DGU Hotchkiss Federal #1289 Pad - DGU Hotchkiss Fed 1289 #18-H5 - HZ - Plan #3											Offset Site Error:		0.0 ft
Survey Program:		0-MWD											Offset Well Error:		0.0 ft
Reference		Offset		Semi Major Axis			Distance							Warning	
Measured Depth (ft)	Vertical Depth (ft)	Measured Depth (ft)	Vertical Depth (ft)	Reference (ft)	Offset (ft)	Highside Toolface (°)	Offset Wellbore Centre +N/-S (ft)	+E/-W (ft)	Between Centres (ft)	Between Ellipses (ft)	Total Uncertainty Axis	Separation Factor			
0.0	0.0	0.0	0.0	0.0	0.0	-152.62	-45.5	-23.6	51.3						
100.0	100.0	100.0	100.0	0.1	0.1	-152.62	-45.5	-23.6	51.3	51.0	0.28	183.619			
200.0	200.0	200.0	200.0	0.3	0.3	-152.62	-45.5	-23.6	51.3	50.7	0.63	81.617			
300.0	300.0	300.0	300.0	0.5	0.5	-152.62	-45.5	-23.6	51.3	50.3	0.98	52.469			
400.0	400.0	400.0	400.0	0.7	0.7	-152.62	-45.5	-23.6	51.3	50.0	1.33	38.662			
500.0	500.0	500.0	500.0	0.8	0.8	-152.62	-45.5	-23.6	51.3	49.6	1.68	30.608			
600.0	600.0	600.0	600.0	1.0	1.0	-152.62	-45.5	-23.6	51.3	49.3	2.02	25.331			
700.0	700.0	700.0	700.0	1.2	1.2	-152.62	-45.5	-23.6	51.3	48.9	2.37	21.606			
800.0	800.0	800.0	800.0	1.4	1.4	-152.62	-45.5	-23.6	51.3	48.6	2.72	18.836			
900.0	900.0	900.0	900.0	1.5	1.5	-152.62	-45.5	-23.6	51.3	48.2	3.07	16.695			
1,000.0	1,000.0	1,000.0	1,000.0	1.7	1.7	-152.62	-45.5	-23.6	51.3	47.9	3.42	14.992 CC, ES			
1,100.0	1,100.0	1,098.3	1,098.3	1.9	1.9	-153.21	-47.2	-23.8	52.9	49.1	3.77	14.046 SF			
1,200.0	1,200.0	1,196.4	1,196.2	2.1	2.1	-154.79	-52.2	-24.6	57.8	53.7	4.11	14.055			
1,300.0	1,300.0	1,294.0	1,293.5	2.2	2.3	-156.88	-60.4	-25.8	66.0	61.6	4.46	14.805			
1,400.0	1,400.0	1,390.9	1,389.7	2.4	2.5	-159.06	-71.9	-27.5	77.6	72.8	4.81	16.135			
1,500.0	1,500.0	1,486.7	1,484.3	2.6	2.7	163.62	-86.3	-29.7	94.3	89.1	5.14	18.322			
1,600.0	1,599.8	1,580.5	1,576.6	2.8	3.0	162.55	-103.5	-32.2	117.4	111.9	5.48	21.433			
1,700.0	1,699.5	1,671.9	1,665.8	3.0	3.3	161.97	-123.1	-35.1	146.8	141.0	5.80	25.310			
1,800.0	1,798.7	1,760.4	1,751.5	3.2	3.6	161.66	-144.8	-38.3	182.3	176.2	6.12	29.807			
1,900.0	1,897.7	1,846.1	1,833.8	3.4	4.0	161.65	-168.2	-41.8	222.4	215.9	6.45	34.496			
2,000.0	1,996.7	1,929.5	1,913.3	3.6	4.4	161.55	-193.4	-45.6	265.1	258.3	6.78	39.125			
2,100.0	2,095.7	2,010.6	1,989.8	3.9	4.9	161.41	-220.0	-49.5	310.3	303.2	7.10	43.701			
2,200.0	2,194.7	2,089.4	2,063.4	4.1	5.3	161.24	-248.0	-53.7	358.0	350.6	7.42	48.221			
2,300.0	2,293.7	2,165.9	2,134.0	4.4	5.8	161.06	-277.0	-58.0	408.0	400.3	7.75	52.685			
2,400.0	2,392.6	2,241.3	2,202.8	4.7	6.3	160.87	-307.4	-62.5	460.3	452.2	8.06	57.083			

Cathedral Energy Services

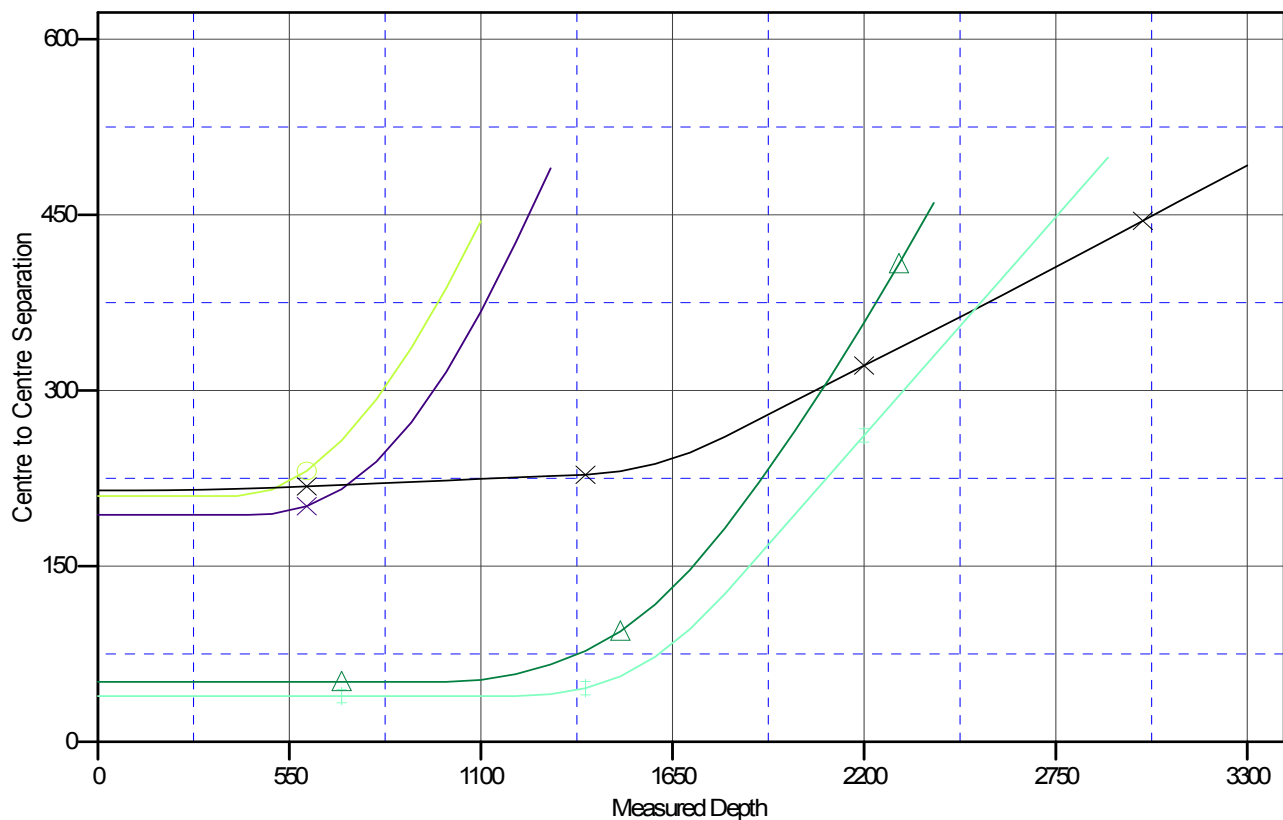
Anticollision Report

Company:	Gunnison Energy Corporation	Local Co-ordinate Reference:	Well DGU Hotchkiss Fed 1289 #18-H3
Project:	Gunnison County, CO	TVD Reference:	KB=20' @ 7351.7ft (Original Well Elev)
Reference Site:	DGU Hotchkiss Federal #1289 Pad	MD Reference:	KB=20' @ 7351.7ft (Original Well Elev)
Site Error:	0.0ft	North Reference:	True
Reference Well:	DGU Hotchkiss Fed 1289 #18-H3	Survey Calculation Method:	Minimum Curvature
Well Error:	0.0ft	Output errors are at	2.00 sigma
Reference Wellbore	HZ	Database:	USA EDM 5000 Multi Users DB
Reference Design:	Plan #2	Offset TVD Reference:	Offset Datum

Reference Depths are relative to KB=20' @ 7351.7ft (Original Well Elev)
 Offset Depths are relative to Offset Datum
 Central Meridian is -105.500000 °

Coordinates are relative to: DGU Hotchkiss Fed 1289 #18-H3
 Coordinate System is US State Plane 1927 (Exact solution), Colorado South 503
 Grid Convergence at Surface is: -1.15°

Ladder Plot



LEGEND

J #18 CS-1, OH, Plan #2 V0
 J #18 CS-2, OH, Plan #2 V0

✕ Existing Hotchkiss Federal #18-2H, Existing, Existing V0
 ◇ DGU Hotchkiss Fed 1289 #18-H4, HZ, Plan #4 V0

▲ DGU Hotchkiss Fed 1289 #18-H5, HZ, Plan #

Gunnison Energy Corporation

Gunnison County, CO

DGU Hotchkiss Federal #1289 Pad

DGU Hotchkiss Fed 1289 #18-H3

HZ

Plan: Plan #2

Standard Planning Report - Geographic

18 December, 2013

Cathedral Energy Services

Planning Report - Geographic

Database:	USA EDM 5000 Multi Users DB	Local Co-ordinate Reference:	Well DGU Hotchkiss Fed 1289 #18-H3
Company:	Gunnison Energy Corporation	TVD Reference:	KB=20' @ 7351.7ft (Original Well Elev)
Project:	Gunnison County, CO	MD Reference:	KB=20' @ 7351.7ft (Original Well Elev)
Site:	DGU Hotchkiss Federal #1289 Pad	North Reference:	True
Well:	DGU Hotchkiss Fed 1289 #18-H3	Survey Calculation Method:	Minimum Curvature
Wellbore:	HZ		
Design:	Plan #2		

Project	Gunnison County, CO		
Map System:	US State Plane 1927 (Exact solution)	System Datum:	Mean Sea Level
Geo Datum:	NAD 1927 (NADCON CONUS)		
Map Zone:	Colorado South 503		

Site		DGU Hotchkiss Federal #1289 Pad			
Site Position:		Northing:	861,388.43 ft	Latitude:	39.017428
From:	Lat/Long	Easting:	1,466,592.96 ft	Longitude:	-107.377078
Position Uncertainty:	0.0 ft	Slot Radius:	13.200 in	Grid Convergence:	-1.15 °

Well		DGU Hotchkiss Fed 1289 #18-H3				
Well Position	+N/-S	0.0 ft	Northing:	861,425.71 ft	Latitude:	39.017531
	+E/-W	0.0 ft	Easting:	1,466,604.80 ft	Longitude:	-107.377039
Position Uncertainty		0.0 ft	Wellhead Elevation:		Ground Level:	7,331.7 ft

Wellbore	HZ				
Magnetics	Model Name	Sample Date	Declination (°)	Dip Angle (°)	Field Strength (nT)
	IGRF2010	10/2/2013	9.72	65.39	51,825

Design	Plan #2			
Audit Notes:				
Version:	Phase:	PLAN	Tie On Depth:	0.0
Vertical Section:	Depth From (TVD)	+N/-S (ft)	+E/-W (ft)	Direction (°)
	0.0	0.0	0.0	120.63

Plan Sections										
Measured Depth (ft)	Inclination (°)	Azimuth (°)	Vertical Depth (ft)	+N/-S (ft)	+E/-W (ft)	Dogleg Rate (°/100ft)	Build Rate (°/100ft)	Turn Rate (°/100ft)	TFO (°)	Target
0.0	0.00	0.00	0.0	0.0	0.0	0.00	0.00	0.00	0.00	
1,400.0	0.00	0.00	1,400.0	0.0	0.0	0.00	0.00	0.00	0.00	
1,807.5	8.15	35.54	1,806.1	23.5	16.8	2.00	2.00	0.00	35.54	
6,521.9	8.15	35.54	6,473.0	567.3	405.2	0.00	0.00	0.00	0.00	
7,522.7	89.81	127.34	7,106.0	254.3	964.5	9.00	8.16	9.17	91.81	DGU Hotchkiss Fed 1
13,607.2	89.81	127.34	7,126.0	-3,435.9	5,802.2	0.00	0.00	0.00	0.00	DGU Hotchkiss Fed 1

Cathedral Energy Services

Planning Report - Geographic

Database:	USA EDM 5000 Multi Users DB	Local Co-ordinate Reference:	Well DGU Hotchkiss Fed 1289 #18-H3
Company:	Gunnison Energy Corporation	TVD Reference:	KB=20' @ 7351.7ft (Original Well Elev)
Project:	Gunnison County, CO	MD Reference:	KB=20' @ 7351.7ft (Original Well Elev)
Site:	DGU Hotchkiss Federal #1289 Pad	North Reference:	True
Well:	DGU Hotchkiss Fed 1289 #18-H3	Survey Calculation Method:	Minimum Curvature
Wellbore:	HZ		
Design:	Plan #2		

Planned Survey									
Measured Depth (ft)	Inclination (°)	Azimuth (°)	Vertical Depth (ft)	+N/-S (ft)	+E/-W (ft)	Map Northing (ft)	Map Easting (ft)	Latitude	Longitude
0.0	0.00	0.00	0.0	0.0	0.0	861,425.71	1,466,604.80	39.017531	-107.377039
100.0	0.00	0.00	100.0	0.0	0.0	861,425.71	1,466,604.80	39.017531	-107.377039
200.0	0.00	0.00	200.0	0.0	0.0	861,425.71	1,466,604.80	39.017531	-107.377039
300.0	0.00	0.00	300.0	0.0	0.0	861,425.71	1,466,604.80	39.017531	-107.377039
400.0	0.00	0.00	400.0	0.0	0.0	861,425.71	1,466,604.80	39.017531	-107.377039
500.0	0.00	0.00	500.0	0.0	0.0	861,425.71	1,466,604.80	39.017531	-107.377039
600.0	0.00	0.00	600.0	0.0	0.0	861,425.71	1,466,604.80	39.017531	-107.377039
700.0	0.00	0.00	700.0	0.0	0.0	861,425.71	1,466,604.80	39.017531	-107.377039
800.0	0.00	0.00	800.0	0.0	0.0	861,425.71	1,466,604.80	39.017531	-107.377039
900.0	0.00	0.00	900.0	0.0	0.0	861,425.71	1,466,604.80	39.017531	-107.377039
1,000.0	0.00	0.00	1,000.0	0.0	0.0	861,425.71	1,466,604.80	39.017531	-107.377039
1,100.0	0.00	0.00	1,100.0	0.0	0.0	861,425.71	1,466,604.80	39.017531	-107.377039
1,200.0	0.00	0.00	1,200.0	0.0	0.0	861,425.71	1,466,604.80	39.017531	-107.377039
1,300.0	0.00	0.00	1,300.0	0.0	0.0	861,425.71	1,466,604.80	39.017531	-107.377039
1,400.0	0.00	0.00	1,400.0	0.0	0.0	861,425.71	1,466,604.80	39.017531	-107.377039
KOP @ 1,400'									
1,500.0	2.00	35.54	1,500.0	1.4	1.0	861,427.11	1,466,605.84	39.017535	-107.377036
1,600.0	4.00	35.54	1,599.8	5.7	4.1	861,431.30	1,466,608.97	39.017547	-107.377025
1,700.0	6.00	35.54	1,699.5	12.8	9.1	861,438.29	1,466,614.18	39.017566	-107.377007
1,807.5	8.15	35.54	1,806.1	23.5	16.8	861,448.90	1,466,622.08	39.017596	-107.376980
EOB @ Inc. = 8.15°									
1,900.0	8.15	35.54	1,897.7	34.2	24.4	861,459.42	1,466,629.92	39.017625	-107.376953
2,000.0	8.15	35.54	1,996.7	45.7	32.7	861,470.79	1,466,638.39	39.017657	-107.376924
2,100.0	8.15	35.54	2,095.7	57.3	40.9	861,482.16	1,466,646.86	39.017688	-107.376895
2,200.0	8.15	35.54	2,194.7	68.8	49.2	861,493.52	1,466,655.33	39.017720	-107.376866
2,300.0	8.15	35.54	2,293.7	80.4	57.4	861,504.89	1,466,663.80	39.017752	-107.376837
2,400.0	8.15	35.54	2,392.6	91.9	65.6	861,516.26	1,466,672.27	39.017783	-107.376808
2,500.0	8.15	35.54	2,491.6	103.4	73.9	861,527.62	1,466,680.74	39.017815	-107.376779
2,600.0	8.15	35.54	2,590.6	115.0	82.1	861,538.99	1,466,689.20	39.017847	-107.376750
2,700.0	8.15	35.54	2,689.6	126.5	90.4	861,550.36	1,466,697.67	39.017878	-107.376721
2,800.0	8.15	35.54	2,788.6	138.0	98.6	861,561.73	1,466,706.14	39.017910	-107.376692
2,900.0	8.15	35.54	2,887.6	149.6	106.8	861,573.09	1,466,714.61	39.017942	-107.376663
3,000.0	8.15	35.54	2,986.6	161.1	115.1	861,584.46	1,466,723.08	39.017973	-107.376634
3,100.0	8.15	35.54	3,085.6	172.6	123.3	861,595.83	1,466,731.55	39.018005	-107.376605
3,200.0	8.15	35.54	3,184.6	184.2	131.5	861,607.19	1,466,740.02	39.018037	-107.376576
3,300.0	8.15	35.54	3,283.6	195.7	139.8	861,618.56	1,466,748.49	39.018068	-107.376547
3,400.0	8.15	35.54	3,382.5	207.2	148.0	861,629.93	1,466,756.96	39.018100	-107.376518
3,500.0	8.15	35.54	3,481.5	218.8	156.3	861,641.29	1,466,765.43	39.018132	-107.376489
3,600.0	8.15	35.54	3,580.5	230.3	164.5	861,652.66	1,466,773.90	39.018163	-107.376460
3,700.0	8.15	35.54	3,679.5	241.8	172.7	861,664.03	1,466,782.37	39.018195	-107.376431
3,800.0	8.15	35.54	3,778.5	253.4	181.0	861,675.39	1,466,790.84	39.018227	-107.376402
3,900.0	8.15	35.54	3,877.5	264.9	189.2	861,686.76	1,466,799.31	39.018258	-107.376373
4,000.0	8.15	35.54	3,976.5	276.4	197.5	861,698.13	1,466,807.77	39.018290	-107.376344
4,100.0	8.15	35.54	4,075.5	288.0	205.7	861,709.49	1,466,816.24	39.018322	-107.376315
4,200.0	8.15	35.54	4,174.5	299.5	213.9	861,720.86	1,466,824.71	39.018353	-107.376286
4,300.0	8.15	35.54	4,273.5	311.0	222.2	861,732.23	1,466,833.18	39.018385	-107.376257
4,400.0	8.15	35.54	4,372.4	322.6	230.4	861,743.59	1,466,841.65	39.018417	-107.376228
4,500.0	8.15	35.54	4,471.4	334.1	238.7	861,754.96	1,466,850.12	39.018448	-107.376199
4,600.0	8.15	35.54	4,570.4	345.7	246.9	861,766.33	1,466,858.59	39.018480	-107.376170
4,700.0	8.15	35.54	4,669.4	357.2	255.1	861,777.69	1,466,867.06	39.018512	-107.376141
4,800.0	8.15	35.54	4,768.4	368.7	263.4	861,789.06	1,466,875.53	39.018543	-107.376113
4,900.0	8.15	35.54	4,867.4	380.3	271.6	861,800.43	1,466,884.00	39.018575	-107.376084
5,000.0	8.15	35.54	4,966.4	391.8	279.9	861,811.80	1,466,892.47	39.018607	-107.376055
5,100.0	8.15	35.54	5,065.4	403.3	288.1	861,823.16	1,466,900.94	39.018638	-107.376026

Cathedral Energy Services

Planning Report - Geographic

Database:	USA EDM 5000 Multi Users DB	Local Co-ordinate Reference:	Well DGU Hotchkiss Fed 1289 #18-H3
Company:	Gunnison Energy Corporation	TVD Reference:	KB=20' @ 7351.7ft (Original Well Elev)
Project:	Gunnison County, CO	MD Reference:	KB=20' @ 7351.7ft (Original Well Elev)
Site:	DGU Hotchkiss Federal #1289 Pad	North Reference:	True
Well:	DGU Hotchkiss Fed 1289 #18-H3	Survey Calculation Method:	Minimum Curvature
Wellbore:	HZ		
Design:	Plan #2		

Planned Survey										
Measured			Vertical			Map	Map			
Depth	Inclination	Azimuth	Depth	+N/-S	+E/-W	Northing	Easting	Latitude	Longitude	
(ft)	(°)	(°)	(ft)	(ft)	(ft)	(ft)	(ft)			
5,200.0	8.15	35.54	5,164.4	414.9	296.3	861,834.53	1,466,909.41	39.018670	-107.375997	
5,300.0	8.15	35.54	5,263.4	426.4	304.6	861,845.90	1,466,917.87	39.018702	-107.375968	
5,400.0	8.15	35.54	5,362.4	437.9	312.8	861,857.26	1,466,926.34	39.018733	-107.375939	
5,500.0	8.15	35.54	5,461.3	449.5	321.0	861,868.63	1,466,934.81	39.018765	-107.375910	
5,600.0	8.15	35.54	5,560.3	461.0	329.3	861,880.00	1,466,943.28	39.018797	-107.375888	
5,700.0	8.15	35.54	5,659.3	472.5	337.5	861,891.36	1,466,951.75	39.018828	-107.375852	
5,800.0	8.15	35.54	5,758.3	484.1	345.8	861,902.73	1,466,960.22	39.018860	-107.375823	
5,900.0	8.15	35.54	5,857.3	495.6	354.0	861,914.10	1,466,968.69	39.018892	-107.375794	
6,000.0	8.15	35.54	5,956.3	507.1	362.2	861,925.46	1,466,977.16	39.018923	-107.375765	
6,100.0	8.15	35.54	6,055.3	518.7	370.5	861,936.83	1,466,985.63	39.018955	-107.375736	
6,200.0	8.15	35.54	6,154.3	530.2	378.7	861,948.20	1,466,994.10	39.018987	-107.375707	
6,300.0	8.15	35.54	6,253.3	541.7	387.0	861,959.56	1,467,002.57	39.019018	-107.375678	
6,400.0	8.15	35.54	6,352.3	553.3	395.2	861,970.93	1,467,011.04	39.019050	-107.375649	
6,500.0	8.15	35.54	6,451.2	564.8	403.4	861,982.30	1,467,019.51	39.019082	-107.375620	
6,521.9	8.15	35.54	6,473.0	567.3	405.2	861,984.79	1,467,021.36	39.019088	-107.375613	
Start 9° Build										
6,550.0	8.45	52.97	6,500.7	570.2	408.0	861,987.59	1,467,024.22	39.019096	-107.375603	
6,600.0	10.57	77.31	6,550.1	573.4	415.5	861,990.67	1,467,031.70	39.019105	-107.375577	
6,650.0	13.87	91.94	6,598.9	574.2	425.9	861,991.26	1,467,042.19	39.019107	-107.375540	
6,700.0	17.70	100.72	6,647.0	572.6	439.4	861,989.37	1,467,055.62	39.019103	-107.375493	
6,750.0	21.78	106.37	6,694.1	568.6	455.8	861,985.02	1,467,071.91	39.019092	-107.375435	
6,800.0	25.99	110.29	6,739.8	562.2	475.0	861,978.21	1,467,090.96	39.019074	-107.375368	
6,850.0	30.28	113.18	6,783.9	553.4	496.8	861,969.01	1,467,112.65	39.019050	-107.375291	
6,900.0	34.62	115.40	6,826.1	542.3	521.3	861,957.46	1,467,136.86	39.019020	-107.375205	
6,950.0	38.99	117.18	6,866.1	529.1	548.1	861,943.64	1,467,163.43	39.018983	-107.375111	
7,000.0	43.39	118.65	6,903.7	513.6	577.2	861,927.63	1,467,192.19	39.018941	-107.375008	
7,050.0	47.80	119.91	6,938.7	496.1	608.3	861,909.53	1,467,222.97	39.018893	-107.374899	
7,100.0	52.22	120.99	6,970.8	476.7	641.3	861,889.45	1,467,255.58	39.018840	-107.374783	
7,150.0	56.65	121.96	6,999.9	455.5	676.0	861,867.52	1,467,289.82	39.018781	-107.374661	
7,200.0	61.09	122.83	7,025.7	432.6	712.1	861,843.87	1,467,325.48	39.018718	-107.374533	
7,250.0	65.53	123.63	7,048.2	408.1	749.5	861,818.64	1,467,362.34	39.018651	-107.374402	
7,300.0	69.98	124.37	7,067.1	382.2	787.8	861,792.00	1,467,400.16	39.018580	-107.374267	
7,350.0	74.43	125.08	7,082.4	355.1	827.0	861,764.10	1,467,438.73	39.018506	-107.374129	
7,400.0	78.88	125.75	7,093.9	326.9	866.6	861,735.13	1,467,477.79	39.018428	-107.373990	
7,450.0	83.34	126.41	7,101.7	297.8	906.5	861,705.24	1,467,517.11	39.018349	-107.373849	
7,500.0	87.79	127.05	7,105.5	268.0	946.5	861,674.65	1,467,556.45	39.018267	-107.373709	
7,522.7	89.81	127.34	7,106.0	254.3	964.5	861,660.57	1,467,574.24	39.018229	-107.373645	
LP @ 7,106' TVD, 89.81°										
7,600.0	89.81	127.34	7,106.3	207.4	1,026.0	861,612.46	1,467,634.75	39.018100	-107.373429	
7,700.0	89.81	127.34	7,106.6	146.8	1,105.5	861,550.22	1,467,713.02	39.017934	-107.373149	
7,800.0	89.81	127.34	7,106.9	86.1	1,185.0	861,487.99	1,467,791.30	39.017767	-107.372869	
7,900.0	89.81	127.34	7,107.2	25.5	1,264.5	861,425.75	1,467,869.57	39.017601	-107.372590	
8,000.0	89.81	127.34	7,107.6	-35.2	1,344.0	861,363.52	1,467,947.84	39.017434	-107.372310	
8,100.0	89.81	127.34	7,107.9	-95.8	1,423.5	861,301.29	1,468,026.12	39.017268	-107.372030	
8,200.0	89.81	127.34	7,108.2	-156.5	1,503.0	861,239.05	1,468,104.39	39.017101	-107.371750	
8,300.0	89.81	127.34	7,108.6	-217.1	1,582.5	861,176.82	1,468,182.66	39.016935	-107.371471	
8,400.0	89.81	127.34	7,108.9	-277.8	1,662.1	861,114.58	1,468,260.94	39.016768	-107.371191	
8,500.0	89.81	127.34	7,109.2	-338.4	1,741.6	861,052.35	1,468,339.21	39.016602	-107.370911	
8,600.0	89.81	127.34	7,109.5	-399.1	1,821.1	860,990.11	1,468,417.49	39.016435	-107.370631	
8,700.0	89.81	127.34	7,109.9	-459.7	1,900.6	860,927.88	1,468,495.76	39.016269	-107.370352	
8,800.0	89.81	127.34	7,110.2	-520.4	1,980.1	860,865.64	1,468,574.03	39.016102	-107.370072	
8,900.0	89.81	127.34	7,110.5	-581.0	2,059.6	860,803.41	1,468,652.31	39.015936	-107.369792	
9,000.0	89.81	127.34	7,110.9	-641.7	2,139.1	860,741.17	1,468,730.58	39.015769	-107.369512	
9,100.0	89.81	127.34	7,111.2	-702.3	2,218.6	860,678.94	1,468,808.85	39.015603	-107.369233	

Cathedral Energy Services

Planning Report - Geographic

Database:	USA EDM 5000 Multi Users DB	Local Co-ordinate Reference:	Well DGU Hotchkiss Fed 1289 #18-H3
Company:	Gunnison Energy Corporation	TVD Reference:	KB=20' @ 7351.7ft (Original Well Elev)
Project:	Gunnison County, CO	MD Reference:	KB=20' @ 7351.7ft (Original Well Elev)
Site:	DGU Hotchkiss Federal #1289 Pad	North Reference:	True
Well:	DGU Hotchkiss Fed 1289 #18-H3	Survey Calculation Method:	Minimum Curvature
Wellbore:	HZ		
Design:	Plan #2		

Planned Survey										
Measured Depth (ft)	Inclination (°)	Azimuth (°)	Vertical Depth (ft)	+N/-S (ft)	+E/-W (ft)	Map Northing (ft)	Map Easting (ft)	Latitude	Longitude	
9,200.0	89.81	127.34	7,111.5	-763.0	2,298.1	860,616.70	1,468,887.13	39.015436	-107.368953	
9,300.0	89.81	127.34	7,111.8	-823.6	2,377.6	860,554.47	1,468,965.40	39.015270	-107.368673	
9,400.0	89.81	127.34	7,112.2	-884.3	2,457.1	860,492.23	1,469,043.67	39.015103	-107.368393	
9,500.0	89.81	127.34	7,112.5	-944.9	2,536.6	860,430.00	1,469,121.95	39.014937	-107.368114	
9,600.0	89.81	127.34	7,112.8	-1,005.6	2,616.2	860,367.76	1,469,200.22	39.014770	-107.367834	
9,700.0	89.81	127.34	7,113.2	-1,066.2	2,695.7	860,305.53	1,469,278.49	39.014604	-107.367554	
9,800.0	89.81	127.34	7,113.5	-1,126.9	2,775.2	860,243.29	1,469,356.77	39.014437	-107.367274	
9,900.0	89.81	127.34	7,113.8	-1,187.5	2,854.7	860,181.06	1,469,435.04	39.014271	-107.366995	
10,000.0	89.81	127.34	7,114.1	-1,248.2	2,934.2	860,118.82	1,469,513.31	39.014104	-107.366715	
10,100.0	89.81	127.34	7,114.5	-1,308.8	3,013.7	860,056.59	1,469,591.59	39.013938	-107.366435	
10,200.0	89.81	127.34	7,114.8	-1,369.5	3,093.2	859,994.35	1,469,669.86	39.013771	-107.366156	
10,300.0	89.81	127.34	7,115.1	-1,430.1	3,172.7	859,932.12	1,469,748.13	39.013605	-107.365876	
10,400.0	89.81	127.34	7,115.5	-1,490.8	3,252.2	859,869.88	1,469,826.41	39.013438	-107.365596	
10,500.0	89.81	127.34	7,115.8	-1,551.4	3,331.7	859,807.65	1,469,904.68	39.013272	-107.365316	
10,600.0	89.81	127.34	7,116.1	-1,612.1	3,411.2	859,745.41	1,469,982.95	39.013105	-107.365037	
10,700.0	89.81	127.34	7,116.4	-1,672.7	3,490.7	859,683.18	1,470,061.23	39.012939	-107.364757	
10,800.0	89.81	127.34	7,116.8	-1,733.4	3,570.2	859,620.95	1,470,139.50	39.012772	-107.364477	
10,900.0	89.81	127.34	7,117.1	-1,794.0	3,649.8	859,558.71	1,470,217.77	39.012605	-107.364197	
11,000.0	89.81	127.34	7,117.4	-1,854.7	3,729.3	859,496.48	1,470,296.05	39.012439	-107.363918	
11,100.0	89.81	127.34	7,117.8	-1,915.3	3,808.8	859,434.24	1,470,374.32	39.012272	-107.363638	
11,200.0	89.81	127.34	7,118.1	-1,976.0	3,888.3	859,372.01	1,470,452.59	39.012106	-107.363358	
11,300.0	89.81	127.34	7,118.4	-2,036.6	3,967.8	859,309.77	1,470,530.87	39.011939	-107.363079	
11,400.0	89.81	127.34	7,118.7	-2,097.3	4,047.3	859,247.54	1,470,609.14	39.011773	-107.362799	
11,500.0	89.81	127.34	7,119.1	-2,157.9	4,126.8	859,185.30	1,470,687.41	39.011606	-107.362519	
11,600.0	89.81	127.34	7,119.4	-2,218.6	4,206.3	859,123.07	1,470,765.69	39.011440	-107.362239	
11,700.0	89.81	127.34	7,119.7	-2,279.2	4,285.8	859,060.83	1,470,843.96	39.011273	-107.361960	
11,800.0	89.81	127.34	7,120.1	-2,339.9	4,365.3	858,998.60	1,470,922.23	39.011107	-107.361680	
11,900.0	89.81	127.34	7,120.4	-2,400.5	4,444.8	858,936.36	1,471,000.51	39.010940	-107.361400	
12,000.0	89.81	127.34	7,120.7	-2,461.2	4,524.3	858,874.13	1,471,078.78	39.010774	-107.361121	
12,100.0	89.81	127.34	7,121.0	-2,521.8	4,603.9	858,811.89	1,471,157.05	39.010607	-107.360841	
12,200.0	89.81	127.34	7,121.4	-2,582.5	4,683.4	858,749.66	1,471,235.33	39.010441	-107.360561	
12,300.0	89.81	127.34	7,121.7	-2,643.1	4,762.9	858,687.42	1,471,313.60	39.010274	-107.360281	
12,400.0	89.81	127.34	7,122.0	-2,703.8	4,842.4	858,625.19	1,471,391.87	39.010108	-107.360002	
12,500.0	89.81	127.34	7,122.4	-2,764.4	4,921.9	858,562.95	1,471,470.15	39.009941	-107.359722	
12,600.0	89.81	127.34	7,122.7	-2,825.1	5,001.4	858,500.72	1,471,548.42	39.009774	-107.359442	
12,700.0	89.81	127.34	7,123.0	-2,885.7	5,080.9	858,438.48	1,471,626.69	39.009608	-107.359163	
12,800.0	89.81	127.34	7,123.3	-2,946.4	5,160.4	858,376.25	1,471,704.97	39.009441	-107.358883	
12,900.0	89.81	127.34	7,123.7	-3,007.0	5,239.9	858,314.01	1,471,783.24	39.009275	-107.358603	
13,000.0	89.81	127.34	7,124.0	-3,067.7	5,319.4	858,251.78	1,471,861.51	39.009108	-107.358324	
13,100.0	89.81	127.34	7,124.3	-3,128.3	5,398.9	858,189.54	1,471,939.79	39.008942	-107.358044	
13,200.0	89.81	127.34	7,124.7	-3,189.0	5,478.4	858,127.31	1,472,018.06	39.008775	-107.357764	
13,300.0	89.81	127.34	7,125.0	-3,249.6	5,558.0	858,065.07	1,472,096.33	39.008609	-107.357484	
13,400.0	89.81	127.34	7,125.3	-3,310.3	5,637.5	858,002.84	1,472,174.61	39.008442	-107.357205	
13,500.0	89.81	127.34	7,125.6	-3,370.9	5,717.0	857,940.61	1,472,252.88	39.008276	-107.356925	
13,607.2	89.81	127.34	7,126.0	-3,435.9	5,802.2	857,873.89	1,472,336.79	39.008097	-107.356625	
TD @ 13,607.2' MD										

Cathedral Energy Services

Planning Report - Geographic

Database:	USA EDM 5000 Multi Users DB	Local Co-ordinate Reference:	Well DGU Hotchkiss Fed 1289 #18-H3
Company:	Gunnison Energy Corporation	TVD Reference:	KB=20' @ 7351.7ft (Original Well Elev)
Project:	Gunnison County, CO	MD Reference:	KB=20' @ 7351.7ft (Original Well Elev)
Site:	DGU Hotchkiss Federal #1289 Pad	North Reference:	True
Well:	DGU Hotchkiss Fed 1289 #18-H3	Survey Calculation Method:	Minimum Curvature
Wellbore:	HZ		
Design:	Plan #2		

Design Targets									
Target Name									
- hit/miss target	Dip Angle	Dip Dir.	TVD	+N/-S	+E/-W	Northing	Easting	Latitude	Longitude
- Shape	(°)	(°)	(ft)	(ft)	(ft)	(ft)	(ft)		
DGU Hotchkiss Fed 128	0.00	358.85	7,106.0	254.3	964.5	861,660.57	1,467,574.24	39.018229	-107.373645
- plan hits target center									
- Point									
DGU Hotchkiss Fed 128	0.00	358.86	7,126.0	-3,435.9	5,802.2	857,873.89	1,472,336.79	39.008097	-107.356625
- plan hits target center									
- Point									

Plan Annotations				
Measured Depth	Vertical Depth	Local Coordinates		Comment
(ft)	(ft)	+N/-S (ft)	+E/-W (ft)	
1,400.0	1,400.0	0.0	0.0	KOP @ 1,400'
1,807.5	1,806.1	23.5	16.8	EOB @ Inc. = 8.15°
6,521.9	6,473.0	567.3	405.2	Start 9° Build
7,522.7	7,106.0	254.3	964.5	LP @ 7,106' TVD, 89.81°
13,607.2	7,126.0	-3,435.9	5,802.2	TD @ 13,607.2' MD