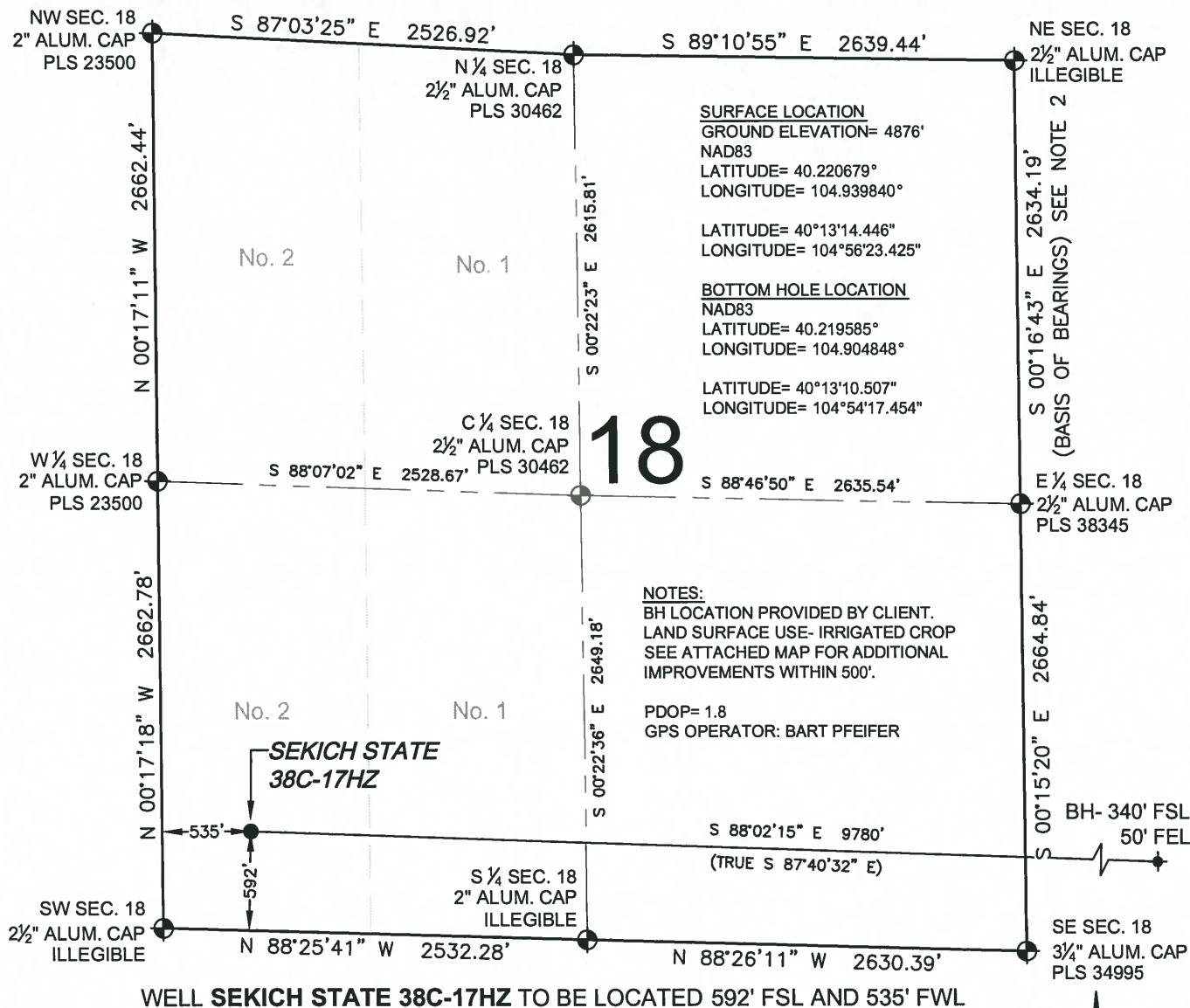


# WELL LOCATION CERTIFICATE: SEKICH STATE 38C-17HZ

SECTION 18, TOWNSHIP 3 NORTH, RANGE 67 WEST, 6TH P.M.



WELL SEKICH STATE 38C-17HZ TO BE LOCATED 592' FSL AND 535' FWL

## LEGEND

- = EXISTING MONUMENT
- ◆ = BOTTOM HOLE
- = PROPOSED WELL
- ◆ = EXISTING WELL
- BH = BOTTOM HOLE

## NOTES:

- THIS FIELD SURVEY CONFORMS TO THE MINIMUM STANDARDS SET BY THE C.O.G.C.C., RULE NO. 215
- BEARINGS AND DISTANCE SHOWN HEREON ARE GRID AND BASED ON THE COLORADO STATE PLANE COORDINATE SYSTEM, NAD 83/2011 BETWEEN MONUMENTS AS LABELED HEREON AND ELEVATIONS SHOWN ARE NAVD 88, AS DERIVED BY GPS OBSERVATIONS.
- GRID DISTANCES ARE SHOWN, AS MEASURED IN THE FIELD, WITH TIES TO WELLS MEASURED PERPENDICULAR TO SECTION LINES.

I, BRADLEY L. LAMAN, A LICENSED PROFESSIONAL LAND SURVEYOR IN THE STATE OF COLORADO DO HEREBY CERTIFY TO **KERR-MCGEE OIL & GAS ONSHORE LP**, THAT THE SURVEY AND WELL LOCATION CERTIFICATE SHOWN HEREON WERE DONE BY ME OR UNDER MY DIRECT SUPERVISION AND THAT THE DRAWING SHOWN HEREON ACCURATELY DEPICTS THE PROPOSED LOCATION OF THE WELL. THIS CERTIFICATE DOES NOT REPRESENT A LAND SURVEY PLAT OR IMPROVEMENT SURVEY PLAT AS DEFINED BY C.R.S. 38-51-102 AND CANNOT BE RELIED UPON TO DETERMINE OWNERSHIP.

BRADLEY L. LAMAN, PLS 38345  
COLORADO LICENSED PROFESSIONAL LAND SURVEYOR  
FOR AND ON BEHALF OF P.F.S., LLC

SHEET 1 OF 2

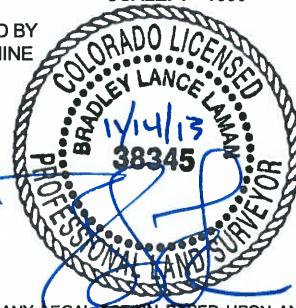


FIELD DATE:	10-18-13	SURFACE LOCATION:	LOT 2, SW 1/4,
DRAWING DATE:	11-12-13	SEC. 18, T3N, R67W, 6TH P.M.	
BY:	WCL	CHECKED:	TJN
			WELD COUNTY, COLORADO

NOTICE: ACCORDING TO COLORADO LAW YOU MUST COMMENCE ANY LEGAL ACTION BASED UPON ANY DEFECT IN THIS SURVEY WITHIN THREE YEARS AFTER YOU FIRST DISCOVER SUCH DEFECT. IN NO EVENT MAY ANY ACTION BASED UPON ANY DEFECT IN THIS SURVEY BE COMMENCED MORE THAN TEN YEARS FROM THIS SAID DATE OF THIS CERTIFICATION SHOWN HEREON.

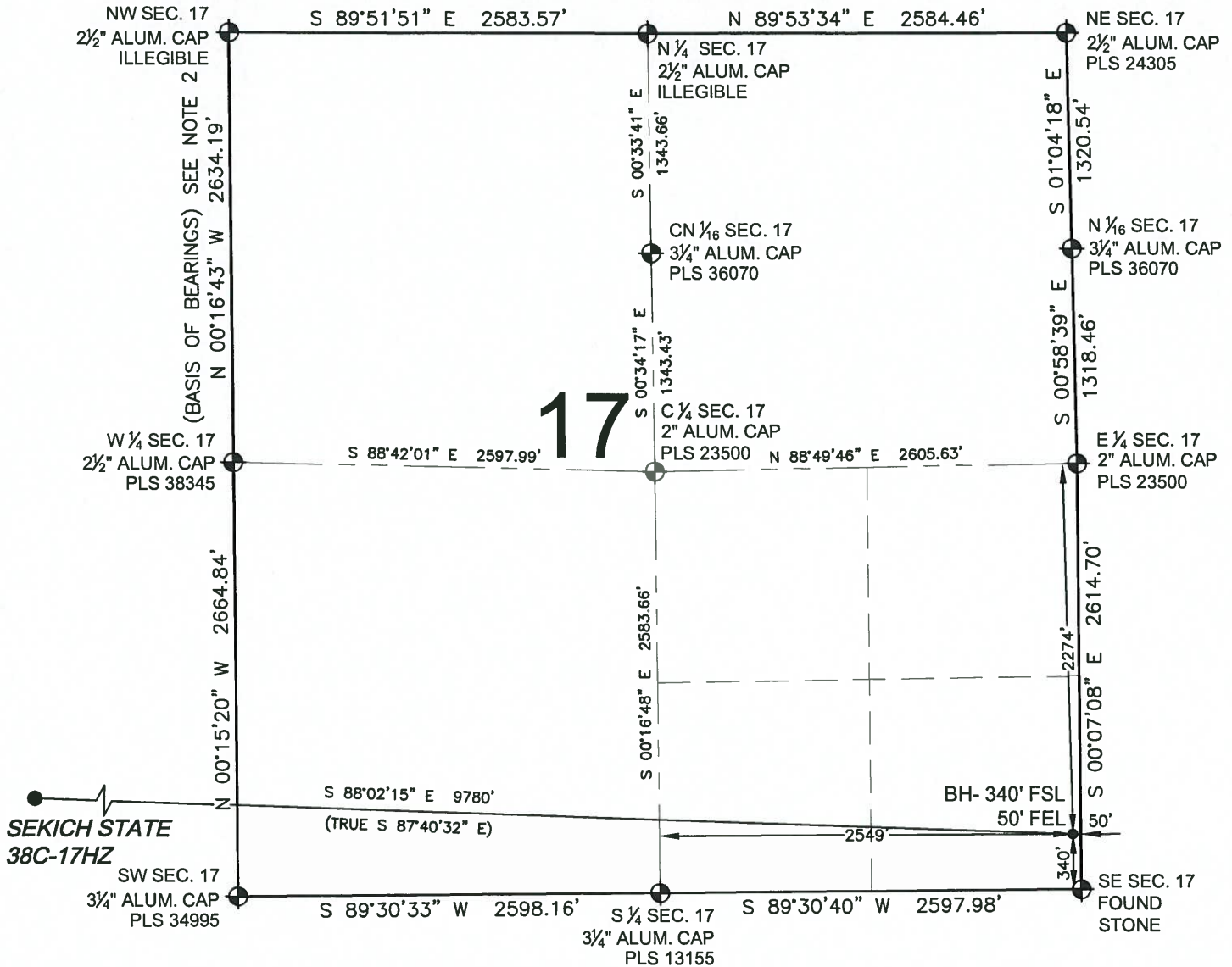


SCALE: 1"=1000'



# WELL LOCATION CERTIFICATE: SEKICH STATE 38C-17HZ

SECTION 17, TOWNSHIP 3 NORTH, RANGE 67 WEST, 6TH P.M.



## LEGEND

- = EXISTING MONUMENT
- ◆ = BOTTOM HOLE
- = PROPOSED WELL
- ◆ = EXISTING WELL
- BH = BOTTOM HOLE

## NOTES:

- THIS FIELD SURVEY CONFORMS TO THE MINIMUM STANDARDS SET BY THE C.O.G.C.C., RULE NO. 215
- BEARINGS AND DISTANCE SHOWN HEREON ARE GRID AND BASED ON THE COLORADO STATE PLANE COORDINATE SYSTEM, NAD 83/2011 BETWEEN MONUMENTS AS LABELED HEREON AND ELEVATIONS SHOWN ARE NAVD 88, AS DERIVED BY GPS OBSERVATIONS.
- GRID DISTANCES ARE SHOWN, AS MEASURED IN THE FIELD, WITH TIES TO WELLS MEASURED PERPENDICULAR TO SECTION LINES.

BRADLEY L. LAMAN, PLS 38345  
COLORADO LICENSED PROFESSIONAL LAND SURVEYOR  
FOR AND ON BEHALF OF P.F.S., LLC

SHEET 2 OF 2



FIELD DATE: 10-18-13  
DRAWING DATE: 11-12-13  
BY: WCL  
CHECKED: TJN  
SURFACE LOCATION: LOT 2, SW 1/4, SEC. 18, T3N, R67W, 6TH P.M.  
WELD COUNTY, COLORADO

NOTICE: ACCORDING TO COLORADO LAW YOU MUST COMMENCE ANY LEGAL ACTION BASED UPON ANY DEFECT IN THIS SURVEY WITHIN THREE YEARS AFTER YOU FIRST DISCOVER SUCH DEFECT. IN NO EVENT MAY ANY ACTION BASED UPON ANY DEFECT IN THIS SURVEY BE COMMENCED MORE THAN TEN YEARS FROM THIS SAID DATE OF THIS CERTIFICATION SHOWN HEREON.