

The Road to Excellence Starts with Safety

Sold To #: 300721	Ship To #: 3109612	Quote #:	Sales Order #: 900792838
Customer: WPX ENERGY ROCKY MOUNTAIN LLC-EBUS	Customer Rep: Dunihoo, Al		
Well Name: RWF	Well #: 311-35	API/UWI #:	
Field: GRAND VALLEY	City (SAP): RIFLE	County/Parish: Garfield	State: Colorado
Legal Description:			
Lat:	Long:		
Contractor: CYCLONE 17	Rig/Platform Name/Num: 17		
Job Purpose: Cement Surface Casing	Ticket Amount:		
Well Type: Development Well	Job Type: Cement Surface Casing		
Sales Person: MAYO, MARK	Srv Supervisor: REEVES, BRANDON	MBU ID Emp #: 287883	

Activity Description	Date/Time	Cht #	Rate bbl/min	Volume bbl		Pressure psig		Comments
				Stage	Total	Tubing	Casing	
Call Out	10/03/2013 12:30							
Depart from Service Center or Other Site	10/03/2013 15:00							
Arrive At Loc	10/03/2013 16:15							
Assessment Of Location Safety Meeting	10/03/2013 19:00							
Other	10/03/2013 19:20							SPOT EQUIPMENT
Pre-Rig Up Safety Meeting	10/03/2013 19:30							
Rig-Up Equipment	10/03/2013 19:40							
Pre-Job Safety Meeting	10/03/2013 22:00							
Start Job	10/03/2013 22:10							TD-1165' TP-1144' SJ-44.2' MW-9.8 PPG. HOLE-13 1/2" CASING-9 5/8" 32.3 PPF. H-40
Test Lines	10/03/2013 22:13					3279.0		
Pump Spacer 1	10/03/2013 22:17		4	20			100.0	FRESH WATER SPACER
Pump Lead Cement	10/03/2013 22:25		8	72.1			315.0	170 SKS. @ 12.3 PPG. 2.38 YIELD 13.75 GAL/SK.
Pump Tail Cement	10/03/2013 22:36		8	60.1			310.0	160 SKS. @ 12.8 PPG. 2.11 YIELD 11.75 GAL/SK.
Drop Top Plug	10/03/2013 22:45							
Pump Displacement	10/03/2013 22:47		8				430.0	FRESH WATER DISPLACEMENT
Slow Rate	10/03/2013 22:58		2	76			240.0	SLOW RATE TO LAND THE PLUG.

Sold To #: 300721

Ship To #: 3109612

Quote #:

Sales Order #: 900792838

SUMMIT Version: 7.3.0106

Wednesday, October 30, 2013 09:29:00

Cementing Job Log

Activity Description	Date/Time	Cht #	Rate bbl/ min	Volume bbl		Pressure psig		Comments
				Stage	Total	Tubing	Casing	
Bump Plug	10/03/2013 23:02		2	86			265.0	PLUG LANDED AT 265 PSI. PRESSURED UP TO 860 PSI.
Check Floats	10/03/2013 23:04							FLOATS HELD. .5 BBL. BACK TO THE CEMENT PUMP.
End Job	10/03/2013 23:06							THE WELL WAS CIRCULATED BEFORE STARTING THE JOB. GOOD CIRCULATION THROUGHOUT THE JOB. THE PIPE WAS NOT RECIPROCATED. CIRCULATED 20 BBLS. OF CEMENT TO SURFACE.
Comment	10/03/2013 23:07							THANK YOU FOR USING HALLIBURTON CEMENTING. BRANDON REEVES AND CREW.

The Road to Excellence Starts with Safety

Sold To #: 300721	Ship To #: 3109612	Quote #:	Sales Order #: 900792838
Customer: WPX ENERGY ROCKY MOUNTAIN LLC-EBUS	Customer Rep: Duniho, Al		
Well Name: RWF	Well #: 311-35	API/UWI #:	
Field: GRAND VALLEY	City (SAP): RIFLE	County/Parish: Garfield	State: Colorado
Contractor: CYCLONE 17	Rig/Platform Name/Num: 17		
Job Purpose: Cement Surface Casing			
Well Type: Development Well	Job Type: Cement Surface Casing		
Sales Person: MAYO, MARK	Srv Supervisor: REEVES, BRANDON	MBU ID Emp #: 287883	

Job Personnel

HES Emp Name	Exp Hrs	Emp #	HES Emp Name	Exp Hrs	Emp #	HES Emp Name	Exp Hrs	Emp #
ANDERSON, ADAM S	0.0	456683	ATKINSON, STEPHAN Michael	0.0	513940	REEVES, BRANDON W	0.0	287883

Equipment

HES Unit #	Distance-1 way	HES Unit #	Distance-1 way	HES Unit #	Distance-1 way	HES Unit #	Distance-1 way
10867425	60 mile	10872429	60 mile	10897891	60 mile	11583932	60 mile
11808833	60 mile						

Job Hours

Date	On Location Hours	Operating Hours	Date	On Location Hours	Operating Hours	Date	On Location Hours	Operating Hours

TOTAL Total is the sum of each column separately

Job				Job Times			
Formation Name				Date	Time	Time Zone	
Formation Depth (MD)	Top	Bottom		Called Out	03 - Oct - 2013	12:30	MST
Form Type		BHST		On Location	03 - Oct - 2013	16:15	MST
Job depth MD	1144. ft	Job Depth TVD	1144. ft	Job Started	03 - Oct - 2013	22:10	MST
Water Depth		Wk Ht Above Floor	4. ft	Job Completed	03 - Oct - 2013	23:06	MST
Perforation Depth (MD)	From	To		Departed Loc	03 - Oct - 2013	00:00	MST

Well Data

Description	New / Used	Max pressure psig	Size in	ID in	Weight lbm/ft	Thread	Grade	Top MD ft	Bottom MD ft	Top TVD ft	Bottom TVD ft

Tools and Accessories

Type	Size	Qty	Make	Depth	Type	Size	Qty	Make	Depth	Type	Size	Qty	Make
Guide Shoe					Packer					Top Plug			
Float Shoe					Bridge Plug					Bottom Plug			
Float Collar					Retainer					SSR plug set			
Insert Float										Plug Container			
Stage Tool										Centralizers			

Miscellaneous Materials

Gelling Agt		Conc		Surfactant		Conc		Acid Type		Qty		Conc	%
Treatment Fld		Conc		Inhibitor		Conc		Sand Type		Size		Qty	

Fluid Data

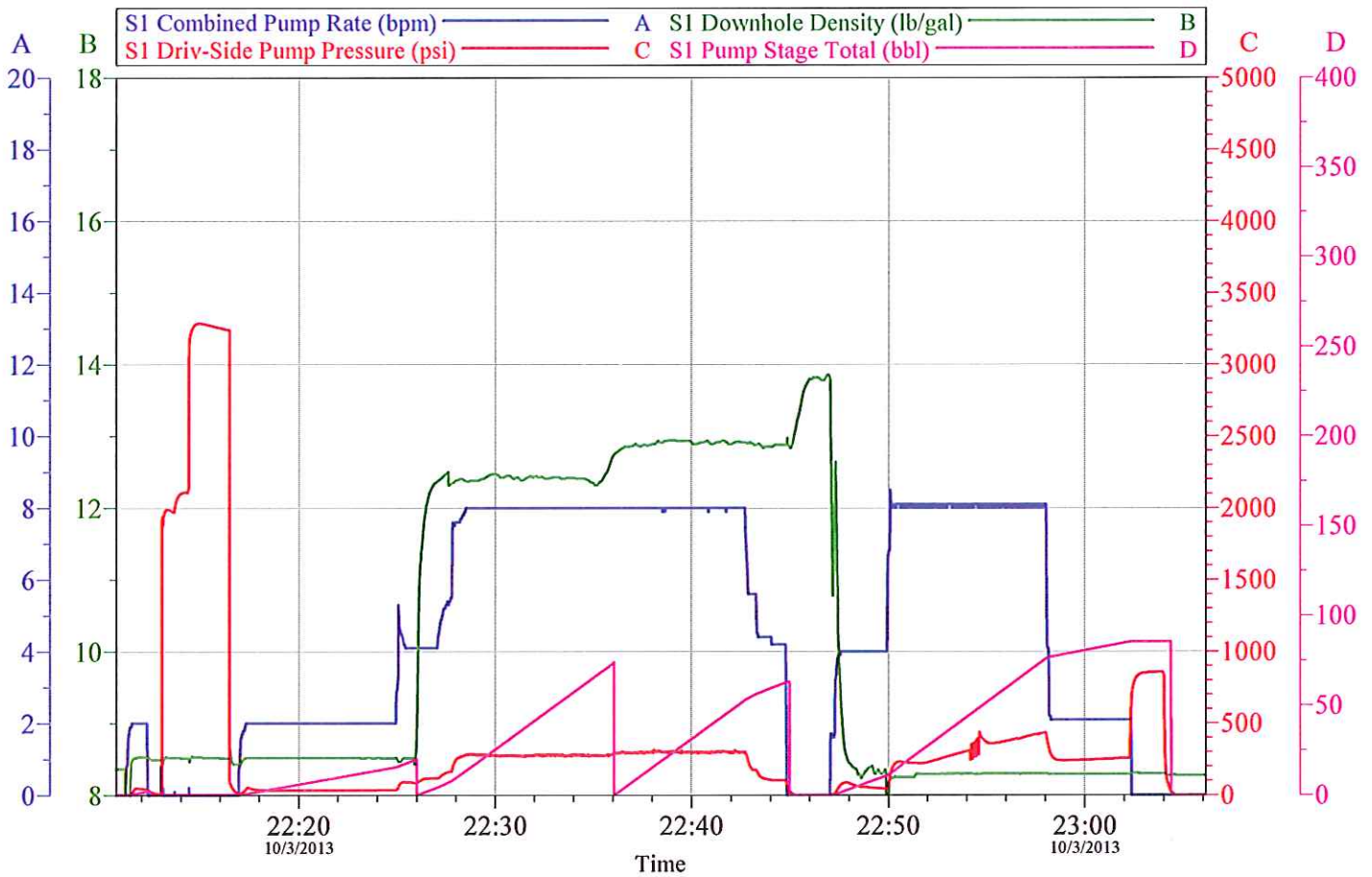
Stage/Plug #: 1													
Fluid #	Stage Type	Fluid Name	Qty	Qty uom	Mixing Density lbm/gal	Yield ft3/sk	Mix Fluid Gal/sk	Rate bbl/min	Total Mix Fluid Gal/sk				

Stage/Plug #: 1													
Fluid #	Stage Type	Fluid Name	Qty	Qty uom	Mixing Density uom	Yield uom	Mix Fluid uom	Rate uom	Total Mix Fluid uom				
1	Fresh Water Spacer		20.00	bbl	.	.0	.0	.0					

HALLIBURTON***Cementing Job Summary***

Stage/Plug #: 1									
Fluid #	Stage Type	Fluid Name	Qty	Qty uom	Mixing Density lbm/gal	Yield ft ³ /sk	Mix Fluid Gal/sk	Rate bbl/min	Total Mix Fluid Gal/sk
2	VariCem GJ1 Lead Cement	VARICEM (TM) CEMENT (452009)	170.0	sacks	12.3	2.38	13.75		13.75
13.75 Gal		FRESH WATER							
3	VariCem GJ1 Tail Cement	VERSACEM (TM) SYSTEM (452010)	160.0	sacks	12.8	2.11	11.75		11.75
11.75 Gal		FRESH WATER							
4	Fresh Water Displacement		86.00	bbl	.	.0	.0	.0	
Calculated Values		Pressures		Volumes					
Displacement		Shut In: Instant		Lost Returns		Cement Slurry		Pad	
Top Of Cement		5 Min		Cement Returns		Actual Displacement		Treatment	
Frac Gradient		15 Min		Spacers		Load and Breakdown		Total Job	
Rates									
Circulating		Mixing		Displacement		Avg. Job			
Cement Left In Pipe	Amount	0 ft	Reason	Shoe Joint					
Frac Ring # 1 @	ID	Frac ring # 2 @	ID	Frac Ring # 3 @	ID	Frac Ring # 4 @	ID		
The Information Stated Herein Is Correct				Customer Representative Signature					

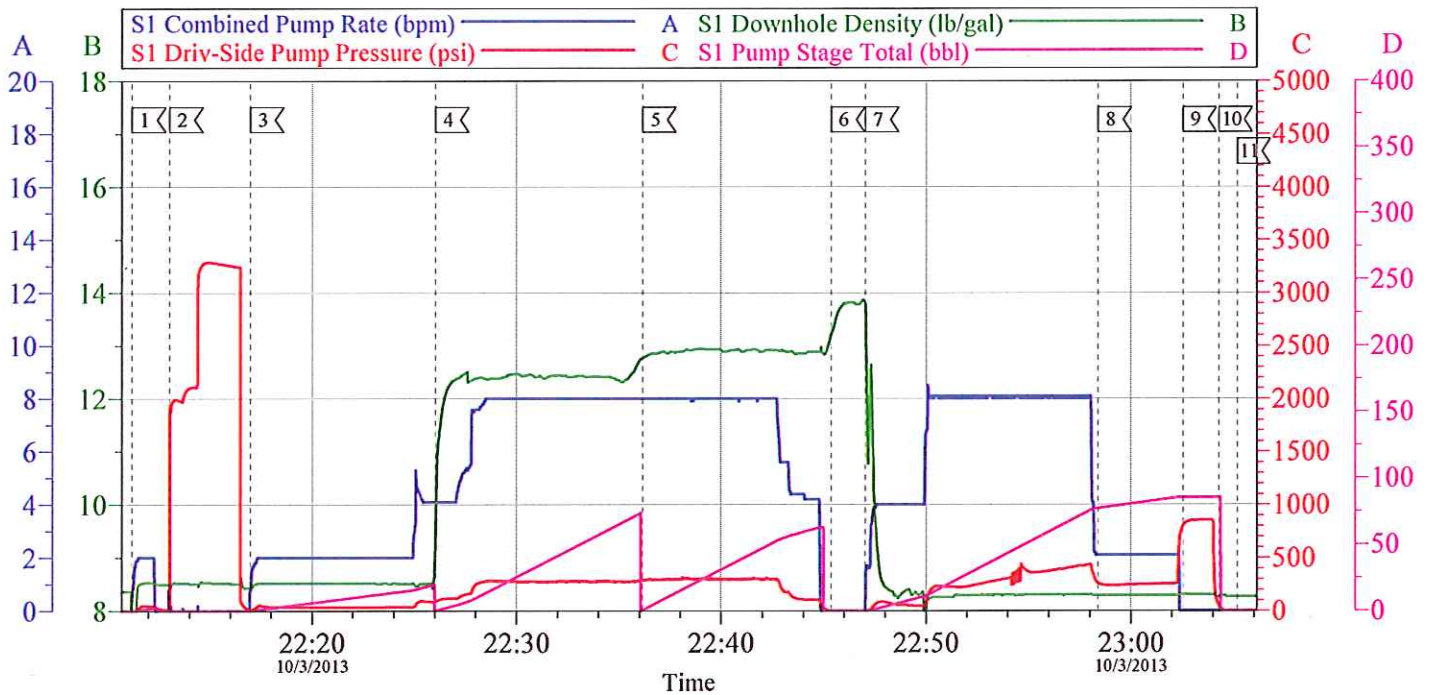
WPX ENERGY RWF 311-35 9 5/8" SURFACE



Customer: WPX ENERGY	Job Date: 03-Oct-2013	Sales Order #: 900792838
Well Description: RWF 311-35	Job Type: 9 5/8" SURFACE	ADC Used: YES
Supervisor: BRANDON REEVES	Company Rep: MIKE	Elite/Operator: 7/ADAM ANDERSON

OptiCem v6.4.10
03-Oct-13 23:12

WPX ENERGY RWF 311-35 9 5/8" SURFACE



Intersection		Local Event Log		Intersection	
	SDPP	Intersection	SDPP		SDPP
1 START JOB	22:11:12 -6.696	2 TEST LINES	22:13:02 305.3	3 PUMP H2O SPACER	22:16:59 13.30
4 PUMP LEAD CEMENT	22:26:02 90.08	5 PUMP TAIL CEMENT	22:36:10 294.0	6 DROP TOP PLUG	22:45:22 -1.696
7 PUMP DISPLACEMENT	22:47:02 -4.214	8 SLOW RATE	22:58:23 264.0	9 LAND PLUG	23:02:32 795.0
10 CHECK FLOATS	23:04:17 54.29	11 END JOB	23:05:10 -13.70		

Customer: WPX ENERGY	Job Date: 03-Oct-2013	Sales Order #: 900792838
Well Description: RWF 311-35	Job Type: 9 5/8" SURFACE	ADC Used: YES
Supervisor: BRANDON REEVES	Company Rep: MIKE	Elite/Operator: 7/ADAM ANDERSON

OptiCem v6.4.10
03-Oct-13 23:11