

---

**WPX ENERGY ROCKY MOUNTAIN LLC-EBUS**

---

**RMV 163-4  
RULISON  
Garfield County , Colorado**

**Cement Surface Casing**  
**13-Nov-2013**

**Post Job Report**

## The Road to Excellence Starts with Safety

Sold To #: 300721	Ship To #: 3123636	Quote #:	Sales Order #: 900893283
Customer: WPX ENERGY ROCKY MOUNTAIN LLC-EBUS		Customer Rep: Hutson, Matt	
Well Name: RMV		Well #: 163-4	API/UWI #: 05-045-22086
Field: RULISON	City (SAP): RIFLE	County/Parish: Garfield	State: Colorado
Lat: N 39.473 deg. OR N 39 deg. 28 min. 23.801 secs.		Long: W 107.889 deg. OR W -108 deg. 6 min. 39.593 secs.	
Contractor: NABORS 574		Rig/Platform Name/Num: NABORS 574	
Job Purpose: Cement Surface Casing			
Well Type: Development Well		Job Type: Cement Surface Casing	
Sales Person: MAYO, MARK		Srvc Supervisor: PONDER, THOMAS	MBU ID Emp #: 427112

### Job Personnel

HES Emp Name	Exp Hrs	Emp #	HES Emp Name	Exp Hrs	Emp #	HES Emp Name	Exp Hrs	Emp #
BLUST, CHARLES Thomas	8	386662	PONDER, THOMAS Lynn	8	427112	SINCLAIR, DAN J	8	338784

### Equipment

HES Unit #	Distance-1 way	HES Unit #	Distance-1 way	HES Unit #	Distance-1 way	HES Unit #	Distance-1 way

### Job Hours

Date	On Location Hours	Operating Hours	Date	On Location Hours	Operating Hours	Date	On Location Hours	Operating Hours
11/13/2013	8	2						

**TOTAL** Total is the sum of each column separately

### Job

Formation Name	Top	Bottom	Called Out	Date	Time	Time Zone
Formation Depth (MD)			On Location	13 - Nov - 2013	14:00	MST
Form Type	BHST		Job Started	13 - Nov - 2013	19:44	MST
Job depth MD	1192. ft	Job Depth TVD	1192. ft	Job Completed	13 - Nov - 2013	20:41
Water Depth		Wk Ht Above Floor	5. ft	Departed Loc	13 - Nov - 2013	22:00
Perforation Depth (MD)	From	To				

### Well Data

Description	New / Used	Max pressure psig	Size in	ID in	Weight lbm/ft	Thread	Grade	Top MD ft	Bottom MD ft	Top TVD ft	Bottom TVD ft
-------------	------------	-------------------	---------	-------	---------------	--------	-------	-----------	--------------	------------	---------------

### Tools and Accessories

Type	Size	Qty	Make	Depth	Type	Size	Qty	Make	Depth	Type	Size	Qty	Make
Guide Shoe	9 5/8	1	WTF	1192	Packer					Top Plug	9 5/8	1	HES
Float Shoe					Bridge Plug					Bottom Plug			
Float Collar	9 5/8	1	WTF	1145	Retainer					SSR plug set			
Insert Float										Plug Container	9 5/8	1	HES
Stage Tool										Centralizers			

### Miscellaneous Materials

Gelling Agt		Conc		Surfactant		Conc		Acid Type		Qty		Conc	%
Treatment Fld		Conc		Inhibitor		Conc		Sand Type		Size		Qty	

### Fluid Data

#### Stage/Plug #: 1

Fluid #	Stage Type	Fluid Name	Qty	Qty uom	Mixing Density lbm/gal	Yield ft3/sk	Mix Fluid Gal/sk	Rate bbl/min	Total Mix Fluid Gal/sk
---------	------------	------------	-----	---------	------------------------	--------------	------------------	--------------	------------------------

#### Stage/Plug #: 1

Fluid #	Stage Type	Fluid Name	Qty	Qty uom	Mixing Density uom	Yield uom	Mix Fluid uom	Rate uom	Total Mix Fluid uom
1	Fresh Water Spacer			bbl	8.34	.0	.0	4.0	

Stage/Plug #: 1										
Fluid #	Stage Type	Fluid Name	Qty	Qty uom	Mixing Density lbm/gal	Yield ft <sup>3</sup> /sk	Mix Fluid Gal/sk	Rate bbl/min	Total Mix Fluid Gal/sk	
2	VersaCem GJ1 Lead Cement	VARICEM (TM) CEMENT (452009)		sacks	12.3	2.38	13.75	8.0	13.75	
	13.75 Gal	FRESH WATER								
3	VersaCem GJ1 Tail Cement	VARICEM (TM) CEMENT (452009)		sacks	12.8	2.11	11.75	8.0	11.75	
	11.75 Gal	FRESH WATER								
4	Fresh Water Displacement			bbl	8.34	.0	.0	10.0		
Calculated Values		Pressures		Volumes						
Displacement	90.1	Shut In: Instant		Lost Returns		Cement Slurry	127.8	Pad		
Top Of Cement	SURFACE	5 Min		Cement Returns	20	Actual Displacement	90.1	Treatment		
Frac Gradient		15 Min		Spacers	20	Load and Breakdown		Total Job	238.1	
Rates										
Circulating	RIG	Mixing	7.5	Displacement	10	Avg. Job	7.5			
Cement Left In Pipe	Amount	0 ft	Reason	Shoe Joint						
Frac Ring # 1 @	ID	Frac ring # 2 @	ID	Frac Ring # 3 @	ID	Frac Ring # 4 @	ID			
The Information Stated Herein Is Correct				Customer Representative Signature						

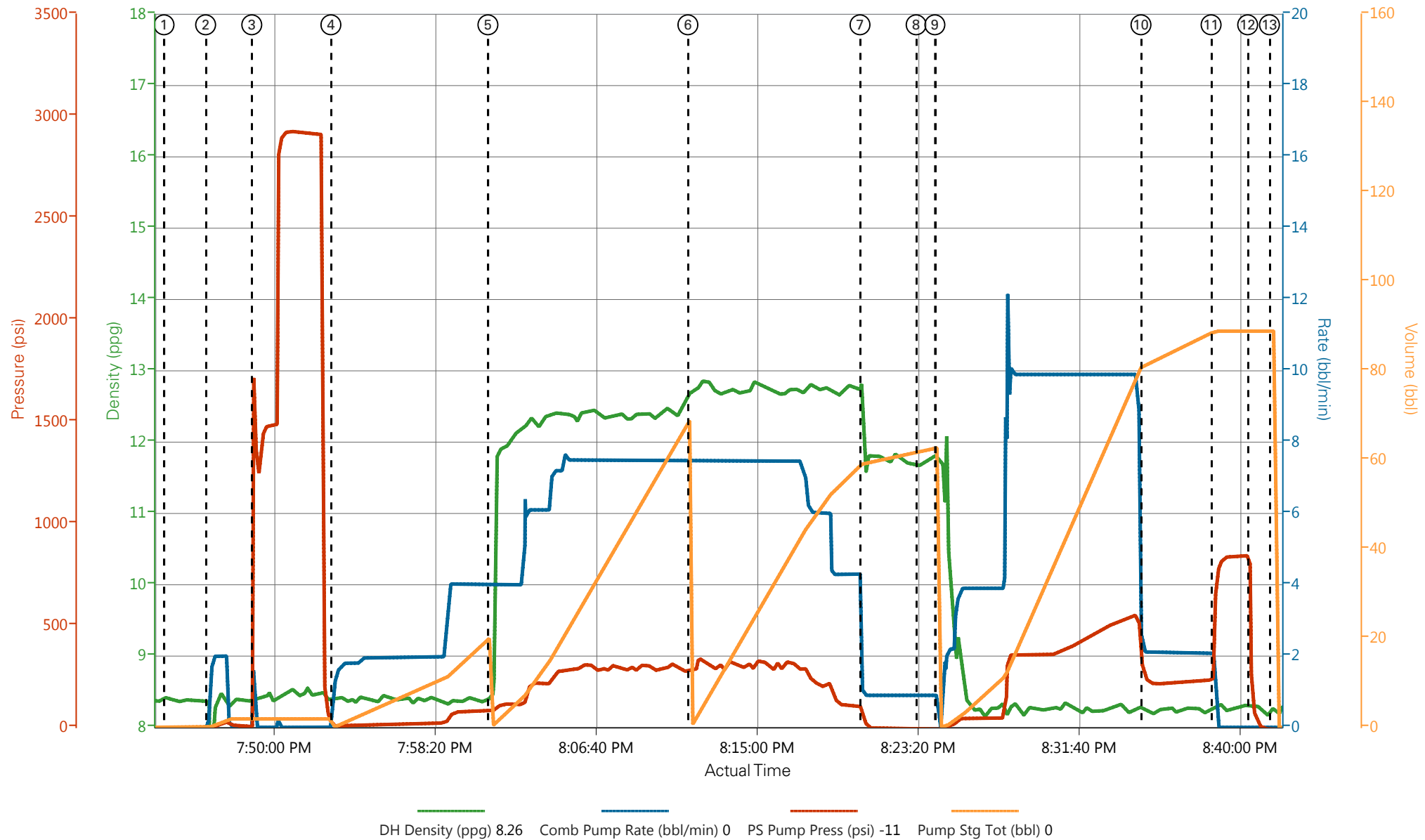
*The Road to Excellence Starts with Safety*

<b>Sold To #:</b> 300721		<b>Ship To #:</b> 3123636		<b>Quote #:</b>		<b>Sales Order #:</b> 900893283	
<b>Customer:</b> WPX ENERGY ROCKY MOUNTAIN LLC-EBUS				<b>Customer Rep:</b> Hutson, Matt			
<b>Well Name:</b> RMV			<b>Well #:</b> 163-4			<b>API/UWI #:</b> 05-045-22086	
<b>Field:</b> RULISON		<b>City (SAP):</b> RIFLE		<b>County/Parish:</b> Garfield		<b>State:</b> Colorado	
<b>Legal Description:</b>							
<b>Lat:</b> N 39.473 deg. OR N 39 deg. 28 min. 23.801 secs.				<b>Long:</b> W 107.889 deg. OR W -108 deg. 6 min. 39.593 secs.			
<b>Contractor:</b> NABORS 574			<b>Rig/Platform Name/Num:</b> NABORS 574				
<b>Job Purpose:</b> Cement Surface Casing						<b>Ticket Amount:</b>	
<b>Well Type:</b> Development Well			<b>Job Type:</b> Cement Surface Casing				
<b>Sales Person:</b> MAYO, MARK			<b>Srv Supervisor:</b> PONDER, THOMAS			<b>MBU ID Emp #:</b> 427112	

Activity Description	Date/Time	Cht #	Rate bbl/min	Volume bbl		Pressure Psig		Comments
				Stage	Total	Tubing	Casing	
Call Out	11/13/2013 09:00							
Crew Leave Yard	11/13/2013 12:00							ALL HES PRESENT FOR PRE-CONVOY SAFETY HUDDLE
Arrive At Loc	11/13/2013 14:00							RIG WAS STILL PULLING DRILL PIPE WHEN THE CREW ARRIVED ON LOCATION
Assessment Of Location Safety Meeting	11/13/2013 17:45							TD- 1201', TP- 1192', SJ- 47', MUD- 10.1 PPG 80 VIS, HOLE- 13 1/2", SURFACE CASING- 9 5/8" 32.3# H-40
Rig-Up Equipment	11/13/2013 18:00							1-550 PICKUP, 1-ELITE PUMP, 1-660 CUFT BULK TRUCK
Safety Meeting	11/13/2013 19:30							ALL HES PRESENT, RIG CREW PRESENT, RIG STARTED CIRCULATING ON BOTTOM @ 1830
Start Job	11/13/2013 19:44		2	2			30.0	FILL LINES
Test Lines	11/13/2013 19:48		0.1	0.1			2925.0	GOOD PRESSURE TEST, NO LEAKS IN THE LINES
Pump Spacer 1	11/13/2013 19:53		4	20			68.0	FRESH WATER
Pump Lead Cement	11/13/2013 20:01		7.5	67.8			306.0	160 SKS 12.3 PPG 2.38 FT3/SK 13.75 GAL/SK
Pump Tail Cement	11/13/2013 20:11		7.5	60.1			310.0	160 SKS 12.8 PPG 2.11 FT3/SK 11.75 GAL/SK

Activity Description	Date/Time	Cht #	Rate bbl/min	Volume bbl		Pressure psig		Comments
				Stage	Total	Tubing	Casing	
Shutdown	11/13/2013 20:20							
Drop Plug	11/13/2013 20:23							PLUG DROP VERIFIED VIA TATTLE TELL BY CUSTOMER REP
Pump Displacement	11/13/2013 20:24		10	80.1			550.0	FRESH WATER, WASHED UP MIXING TUB ON TOP OF PLUG WITH FIRST 10 BBL OF DISPLACEMENT
Slow Rate	11/13/2013 20:35		2	10	90.1		234.0	GOOD CIRCULATION THROUGH OUT THE JOB, 20 BBL CEMENT CIRCULATED TO SURFACE
Bump Plug	11/13/2013 20:38				90.1		284.0	PLUG BUMPED
Check Floats	11/13/2013 20:40						843.0	FLOATS HELD, 1/2 BBL BACK TO THE DISPLACEMENT TANKS
End Job	11/13/2013 20:41							THANK YOU FOR CHOOSING HALLIBURTON, THOMAS PONDER AND CREW

# WPX - RMV 163-4 - 9.625 IN SURFACE



- |                             |                                      |                                     |                                |                         |
|-----------------------------|--------------------------------------|-------------------------------------|--------------------------------|-------------------------|
| ① Start Job 8.42;0;-8;0     | ④ Pump Spacer 1 8.35;0.9;6;0.1       | ⑦ Shutdown 12.33;0.9;53;59.2        | ⑩ Slow Rate 8.25;2.1;260;81.2  | ⑬ Other 8.25;0;-10;88.9 |
| ② Fill Lines 8.33;0.9;-8;0  | ⑤ Pump Lead Cement 8.41;4;81;0.1     | ⑧ Drop Top Plug 11.69;0.9;-10;61.9  | ⑪ Bump Plug 8.27;2;477;88.8    |                         |
| ③ Test Lines 8.4;0;1462;1.9 | ⑥ Pump Tail Cement 12.76;7.5;298;0.2 | ⑨ Pump Displacement 11.78;0.9;-10;0 | ⑫ Check Floats 8.27;0;314;88.9 |                         |

▼ **HALLIBURTON** | iCem® Service

Created: 2013-11-13 18:58:40, Version: 2.0.606

Edit

Customer: WPX ENERGY ROCKY MOUNTAIN LLC-EBUS

Job Date: 11/13/2013

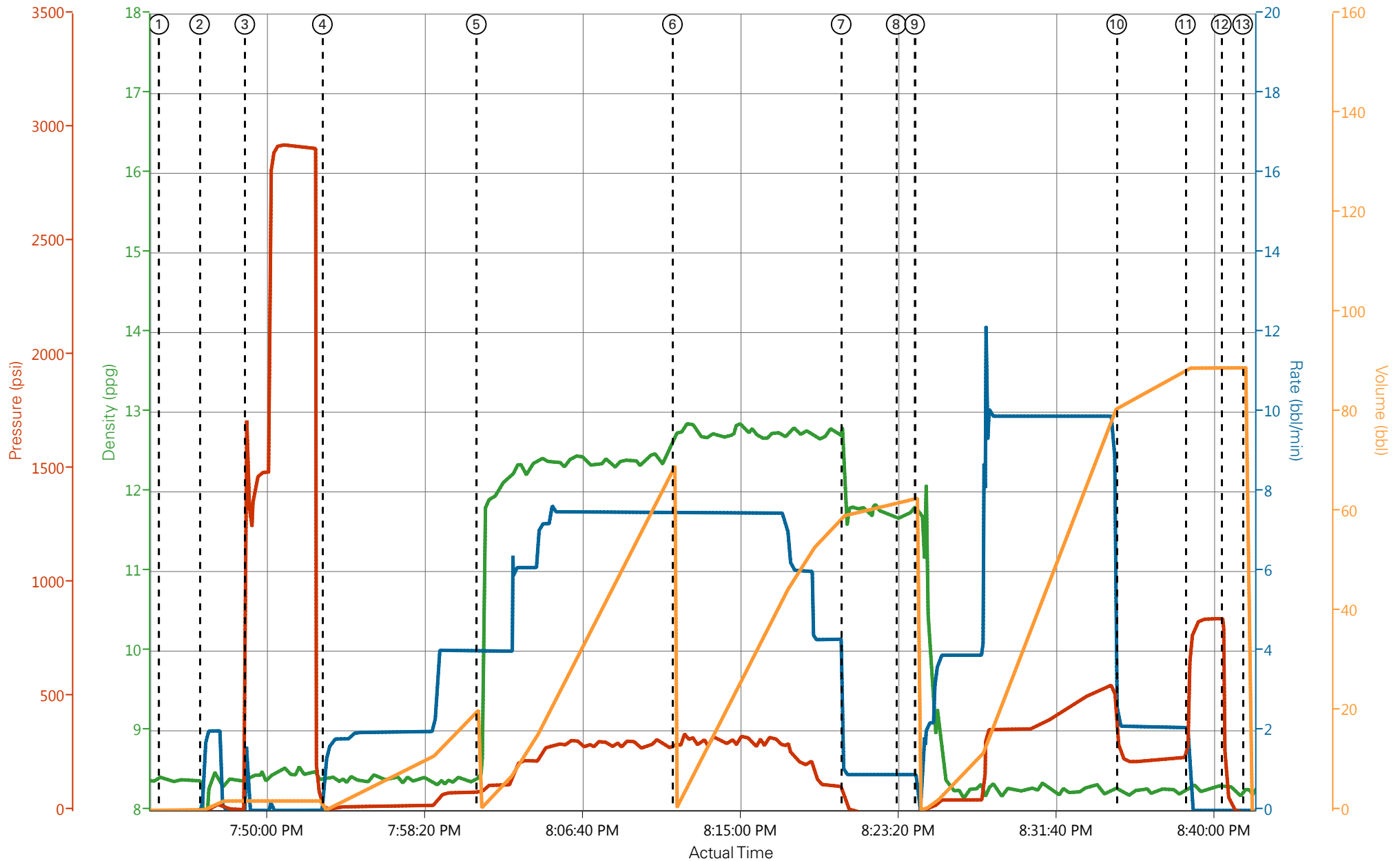
Well: RMV 163-4

Representative: GARY VALLAD

Sales Order #: 900893283

ELITE #2: THOMAS PONDER / DAN SINCLAIR

# WPX - RMV 163-4 - 9.625 IN SURFACE



DH Density (ppg) 8.24 Comb Pump Rate (bbl/min) 0 PS Pump Press (psi) -10 Pump Stg Tot (bbl) 0

**HALLIBURTON** | iCem® Service

Created: 2013-11-13 18:58:40, Version: 2.0.606

Edit

Customer: WPX ENERGY ROCKY MOUNTAIN LLC-EBUS

Job Date: 11/13/2013

Well: RMV 163-4

Representative: GARY VALLAD

Sales Order #: 900893283

ELITE #2: THOMAS PONDER / DAN SINCLAIR

# HALLIBURTON

Company:	<u>WPX</u>	Date:	<u>11/13/2013</u>
Submitted by:	<u>THOMAS PONDER</u>	Date Rec.:	<u>11/13/2013</u>
Attention:	<u>LARRY COOKSEY</u>	S.O.#	<u>900893283</u>
Lease	<u>RMV</u>	Job Type:	<u>SURFACE</u>
Well #	<u>163-4</u>		

Specific Gravity	<i>MAX</i>	<i>1</i>
pH	<i>8</i>	<i>7</i>
Potassium (K)	<i>5000</i>	<i>250</i> Mg / L
Calcium (Ca)	<i>500</i>	<i>120</i> Mg / L
Iron (FE2)	<i>300</i>	<i>0</i> Mg / L
Chlorides (Cl)	<i>3000</i>	<i>0</i> Mg / L
Sulfates (SO <sub>4</sub> )	<i>1500</i>	<i>&lt;200</i> Mg / L
Carbonates hardness		
Temp	<i>40-80</i>	<i>57</i> Deg
Total Dissolved Solids		<i>220</i> Mg / L

Respectfully: THOMAS PONDER

Title: CEMENTING SUPERVISOR

Location: GRAND JCT, CO



<b>Sales Order #:</b> 900893283	<b>Line Item:</b> 10	<b>Survey Conducted Date:</b> 11/14/2013
<b>Customer:</b> WPX ENERGY ROCKY MOUNTAIN LLC-EBUS		<b>Job Type (BOM):</b> CMT SURFACE CASING BOM
<b>Customer Representative:</b> GARY VALLAD		<b>API / UWI: (leave blank if unknown)</b> 05-045-22086
<b>Well Name:</b> RMV		<b>Well Number:</b> 163-4
<b>Well Type:</b> Development Well	<b>Well Country:</b> United States of America	
<b>H2S Present:</b>	<b>Well State:</b> Colorado	<b>Well County:</b> Garfield

Dear Customer,

We hope that you were satisfied with the service quality of this job performed by Halliburton. It is the aim of our management and service personnel to deliver equipment and service of a standard unmatched in the service sector of the energy industry.

Please take the time to let us know if our performance met with your satisfaction. Please be as critical as possible to ensure we constantly improve our service. Your comments are of great value to us and are intended for the exclusive use of Halliburton.

### CUSTOMER SATISFACTION SURVEY

CATEGORY	CUSTOMER SATISFACTION RESPONSE	
Survey Conducted Date	The date the survey was conducted	11/14/2013
Survey Interviewer	The survey interviewer is the person who initiated the survey.	THOMAS PONDER (HX41187)
Customer Participation	Did the customer participate in this survey? (Y/N)	Yes
Customer Representative	Enter the Customer representative name	GARY VALLAD
HSE	Was our HSE performance satisfactory? Circle Y or N	Yes
Equipment	Were you satisfied with our Equipment? Circle Y or N	Yes
Personnel	Were you satisfied with our people? Circle Y or N	Yes
Customer Comment	Customer's Comment	GOOD JOB

CUSTOMER SIGNATURE

<b>Sales Order #:</b> 900893283	<b>Line Item:</b> 10	<b>Survey Conducted Date:</b> 11/14/2013
<b>Customer:</b> WPX ENERGY ROCKY MOUNTAIN LLC-EBUS		<b>Job Type (BOM):</b> CMT SURFACE CASING BOM
<b>Customer Representative:</b> GARY VALLAD		<b>API / UWI: (leave blank if unknown)</b> 05-045-22086
<b>Well Name:</b> RMV		<b>Well Number:</b> 163-4
<b>Well Type:</b> Development Well	<b>Well Country:</b> United States of America	
<b>H2S Present:</b>	<b>Well State:</b> Colorado	<b>Well County:</b> Garfield

*KEY PERFORMANCE INDICATORS*

General	
<b>Survey Conducted Date</b>	11/14/2013
The date the survey was conducted	

Cementing KPI Survey	
<b>Type of Job</b>	0
Select the type of job. (Cementing or Non-Cementing)	
<b>Select the Maximum Deviation range for this Job</b>	Deviated
What is the highest deviation for the job you just completed? This may not be the maximum well deviation.	
<b>Total Operating Time (hours)</b>	2
Total Operating Hours Including Rig-up, Pumping, Rig-down. Enter in decimal format.	
<b>HSE Incident, Accident, Injury</b>	No
HSE Incident, Accident, Injury. This should be recordable incidents only.	
<b>Was the job purpose achieved?</b>	Yes
Was the job delivered correctly as per customer agreed design?	
<b>Operating Hours (Pumping Hours)</b>	1
Total number of hours pumping fluid on this job. Enter in decimal format.	
<b>Customer Non-Productive Rig Time (hrs)</b>	0
Lost time due to Halliburton in the start, execution, or completion of an ordered service or product, or delays in a follow-on service. Enter in decimal format. 0 if none.	
<b>Type of Rig Classification Job Was Performed</b>	Drilling Rig (Portable)
Type Of Rig (classification) Job Was Performed On	
<b>Number Of JSAs Performed</b>	6
Number Of Jsas Performed	
<b>Number of Unplanned Shutdowns</b>	0
Unplanned shutdown is when injection stops for any period of time.	
<b>Was this a Primary Cement Job (Yes / No)</b>	Yes

<b>Sales Order #:</b> 900893283	<b>Line Item:</b> 10	<b>Survey Conducted Date:</b> 11/14/2013
<b>Customer:</b> WPX ENERGY ROCKY MOUNTAIN LLC-EBUS		<b>Job Type (BOM):</b> CMT SURFACE CASING BOM
<b>Customer Representative:</b> GARY VALLAD		<b>API / UWI: (leave blank if unknown)</b> 05-045-22086
<b>Well Name:</b> RMV		<b>Well Number:</b> 163-4
<b>Well Type:</b> Development Well	<b>Well Country:</b> United States of America	
<b>H2S Present:</b>	<b>Well State:</b> Colorado	<b>Well County:</b> Garfield

Primary Cement Job= Casing job, Liner job, or Tie-back job.	
<b>Did We Run Wiper Plugs?</b> Did We Run Top And Bottom Casing Wiper Plugs?	Top
<b>Mixing Density of Job Stayed in Designed Density Range (0-100%)</b> Density Range defined as +/- .20 ppg. Calculation: Total BBLs cement mixed at designed density divided by total BBLs of cement multiplied by 100	99
<b>Was Automated Density Control Used?</b> Was Automated Density Control (ADC) Used ?	Yes
<b>Pump Rate (percent) of Job Stayed At Designed Pump Rate</b> Pump Rate range defined as +/- 1bbl/min. Calculation: Total BBLs of fluid pumped at the designed rate divided by Total BBLs of fluid pumped, multiplied by 100	99
<b>Nbr of Remedial Sqz Jobs Rqd - Competition</b> Number Of Remedial Squeeze Jobs Required After Primary Job Performed By Competition	0
<b>Nbr of Remedial Plug Jobs Rqd - HES</b> Number Of Remedial Plug Jobs Needed After Primary Plug Pumped By HES	0
<b>Nbr of Remedial Sqz Jobs Rqd - HES</b> Number Of Remedial Squeeze Jobs Required After Primary Job Performed By HES	0