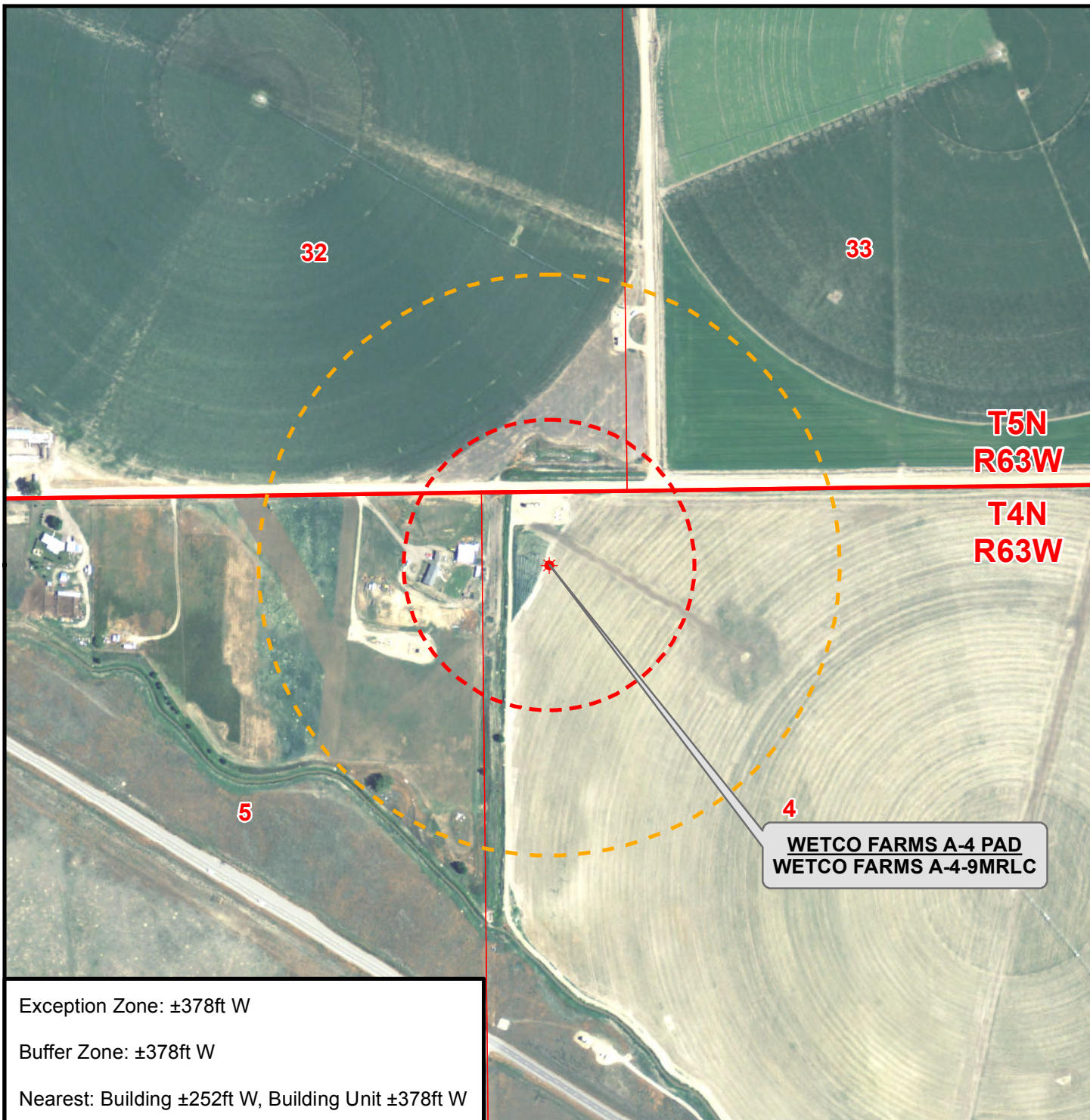


K:\BONANZA CREEK\2013\_04\_2014\_WELL\_STAKING\GIS\Maps\_A-4\WetcoFarms A-4 NZ.mxd 10/31/2013 9:15:33 AM



Exception Zone:  $\pm 378\text{ft W}$

Buffer Zone:  $\pm 378\text{ft W}$

Nearest: Building  $\pm 252\text{ft W}$ , Building Unit  $\pm 378\text{ft W}$

### Legend

- ★ Well - Fee - Proposed
-  500ft Notification Exception Zone
-  1,000ft Notification Buffer Zone

### WELL PAD - WETCO FARMS A-4

NOTIFICATION ZONE MAP  
WETCO FARMS A-4-9MRLC  
LOCATED IN NW1/4 NW1/4  
SECTION 4, T4N, R63W, 6th P.M.  
WELD COUNTY, COLORADO



**BONANZA  
CREEK**

410 17th Street, Suite 1400  
Denver, Colorado 80202



### CONSULTING, LLC

SHERIDAN OFFICE  
2155 North Main Street  
Sheridan, Wyoming 82801  
Phone 307-674-0609

LOVELAND OFFICE  
1635 Foxtail Drive, Suite 204  
Loveland, Colorado 80538  
Phone 970-776-4331



SCALE: 1" = 500ft

NAD83 CO-Nft

DRAWN: JELO

DATE: 1 Nov 2013

REVISED:

DATE: