

---

# **WPX ENERGY ROCKY MOUNTAIN LLC-EBUS**

---

**PA 414-12  
PARACHUTE  
Garfield County , Colorado**

**Cement Surface Casing  
30-Oct-2013**

**Post Job Report**

## The Road to Excellence Starts with Safety

Sold To #: 300721	Ship To #: 300721	Quote #:	Sales Order #: 900856269
Customer: WPX ENERGY ROCKY MOUNTAIN LLC-EBUS	Customer Rep:		
Well Name: PA	Well #: 414-12	API/UWI #:	
Field: PARACHUTE	City (SAP): TULSA	County/Parish: Garfield	State: Colorado
Contractor: NABORS 577	Rig/Platform Name/Num: NABORS 577		
Job Purpose: Cement Surface Casing			
Well Type: Development Well	Job Type: Cement Surface Casing		
Sales Person: MAYO, MARK	Srv Supervisor: CARTER, ERIC	MBU ID Emp #: 345598	

## Job Personnel

HES Emp Name	Exp Hrs	Emp #	HES Emp Name	Exp Hrs	Emp #	HES Emp Name	Exp Hrs	Emp #
CAMPBELL, DAVID Arthur	0.0	544403	CARTER, ERIC Earl	0.0	345598	LINN, PAUL Andrew	0.0	479143
WESTFALL, DUSTIN Adam	0.0	555858						

## Equipment

HES Unit #	Distance-1 way	HES Unit #	Distance-1 way	HES Unit #	Distance-1 way	HES Unit #	Distance-1 way
10567589C	60 mile	10867423	60 mile	11562538	60 mile	11583933	60 mile
11808829	60 mile						

## Job Hours

Date	On Location Hours	Operating Hours	Date	On Location Hours	Operating Hours	Date	On Location Hours	Operating Hours

TOTAL	Total is the sum of each column separately							
-------	--------------------------------------------	--	--	--	--	--	--	--

## Job

Formation Name					Job Times			
Formation Depth (MD)	Top	Bottom			Called Out	Date	Time	Time Zone
Form Type	BHST				On Location	29 - Oct - 2013	19:30	MST
Job depth MD	1039.9 ft		Job Depth TVD	1039.9 ft	Job Started	30 - Oct - 2013	00:56	MST
Water Depth			Wk Ht Above Floor	5. ft	Job Completed	30 - Oct - 2013	01:47	MST
Perforation Depth (MD)	From	To			Departed Loc	30 - Oct - 2013	03:00	MST

## Well Data

Description	New / Used	Max pressure psig	Size in	ID in	Weight lbm/ft	Thread	Grade	Top MD ft	Bottom MD ft	Top TVD ft	Bottom TVD ft
OPEN HOLE				13.5				.	1054.	.	1054.
SURFACE CASING	Unknown		9.625	9.001	32.3		H-40	.	1040.	.	1040.

## Tools and Accessories

Type	Size	Qty	Make	Depth	Type	Size	Qty	Make	Depth	Type	Size	Qty	Make
Guide Shoe					Packer					Top Plug			
Float Shoe					Bridge Plug					Bottom Plug			
Float Collar					Retainer					SSR plug set			
Insert Float										Plug Container			
Stage Tool										Centralizers			

## Miscellaneous Materials

Gelling Agt		Conc		Surfactant		Conc		Acid Type		Qty		Conc	%
Treatment Fld		Conc		Inhibitor		Conc		Sand Type		Size		Qty	

## Fluid Data

Stage/Plug #: 1													
Fluid #	Stage Type	Fluid Name			Qty	Qty uom	Mixing Density lbm/gal	Yield ft3/sk	Mix Fluid Gal/sk	Rate bbl/min	Total Mix Fluid Gal/sk		

Stage/Plug #: 1

Stage/Plug #: 1									
Fluid #	Stage Type	Fluid Name	Qty	Qty uom	Mixing Density lbm/gal	Yield ft <sup>3</sup> /sk	Mix Fluid Gal/sk	Rate bbl/min	Total Mix Fluid Gal/sk
1	Fresh Water Spacer		20.00	bbl	.	.0	.0	.0	
2	VariCem GJ1 Tail Cement	VARICEM (TM) CEMENT (452009)	295.0	sacks	12.8	2.11	11.75		11.75
11.75 Gal		FRESH WATER							
3	Fresh Water Displacement		78.00	bbl	.	.0	.0	10.0	
Calculated Values		Pressures		Volumes					
Displacement		Shut In: Instant		Lost Returns		Cement Slurry		Pad	
Top Of Cement		5 Min		Cement Returns		Actual Displacement		Treatment	
Frac Gradient		15 Min		Spacers		Load and Breakdown		Total Job	
Rates									
Circulating		Mixing		Displacement		Avg. Job			
Cement Left In Pipe	Amount	44.08 ft	Reason	Shoe Joint					
Frac Ring # 1 @	ID	Frac ring # 2 @	ID	Frac Ring # 3 @	ID	Frac Ring # 4 @	ID		
The Information Stated Herein Is Correct				Customer Representative Signature					

*The Road to Excellence Starts with Safety*

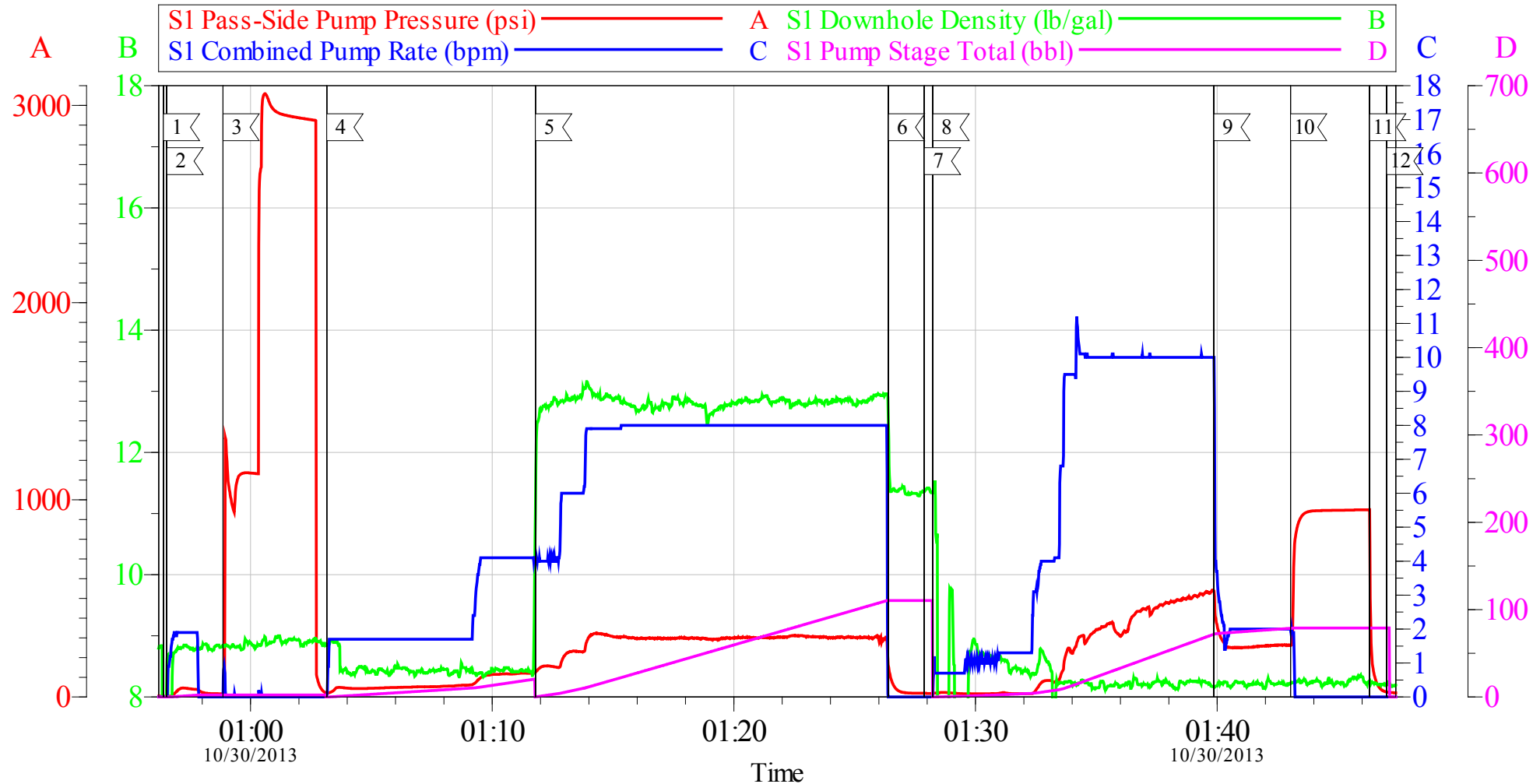
<b>Sold To #:</b> 300721		<b>Ship To #:</b> 300721		<b>Quote #:</b>		<b>Sales Order #:</b> 900856269	
<b>Customer:</b> WPX ENERGY ROCKY MOUNTAIN LLC-EBUS				<b>Customer Rep:</b>			
<b>Well Name:</b> PA			<b>Well #:</b> 414-12			<b>API/UWI #:</b>	
<b>Field:</b> PARACHUTE		<b>City (SAP):</b> TULSA		<b>County/Parish:</b> Garfield			<b>State:</b> Colorado
<b>Legal Description:</b>							
<b>Lat:</b>				<b>Long:</b>			
<b>Contractor:</b> NABORS 577			<b>Rig/Platform Name/Num:</b> NABORS 577				
<b>Job Purpose:</b> Cement Surface Casing						<b>Ticket Amount:</b>	
<b>Well Type:</b> Development Well			<b>Job Type:</b> Cement Surface Casing				
<b>Sales Person:</b> MAYO, MARK			<b>Srvc Supervisor:</b> CARTER, ERIC			<b>MBU ID Emp #:</b> 345598	

Activity Description	Date/Time	Cht #	Rate bbl/min	Volume bbl		Pressure psig		Comments
				Stage	Total	Tubing	Casing	
Arrive at Location from Other Job or Site	10/29/2013 19:30							
Assessment Of Location Safety Meeting	10/29/2013 23:30							ATTENDED BY ALL HES CREW
Other	10/29/2013 23:40							SPOT EQUIPMENT
Pre-Rig Up Safety Meeting	10/29/2013 23:50							ATTENDED BY ALL HES CREW
Rig-Up Equipment	10/30/2013 00:00							
Pre-Job Safety Meeting	10/30/2013 00:30							ATTENDED BY ALL HES CREW, RIG CREW AND COMPANY REP
Start Job	10/30/2013 00:56							TP 1039.98', TD 1054', SJ 44.08', FC 995.9', MW 9.5 PPG, CASING 9.625", 32.3#, H-40, OPEN HOLE 13.5", CENTRALIZERS, RIG CIRCULATED FOR 1.5 HR'S PRIOR TO JOB
Other	10/30/2013 00:56		2	2			50.0	FILL LINES
Test Lines	10/30/2013 00:58							PRESSURED UP TO 3030 PSI, PRESSURE HELD
Pump Spacer	10/30/2013 01:03		4	20			120.0	FRESH WATER
Pump Tail Cement	10/30/2013 01:11		8	110.9			310.0	295 SKS VARICEM MIXED AT 12.8 PPG, 2.11 YIELD, 11.75 GL/SK
Shutdown	10/30/2013 01:26							
Drop Top Plug	10/30/2013 01:27							PLUG LUANCHED

## Cementing Job Log

Activity Description	Date/Time	Cht #	Rate bbl/min	Volume bbl		Pressure psig		Comments
				Stage	Total	Tubing	Casing	
Pump Displacement	10/30/2013 01:28		10	68.4			540.0	FRESH WATER
Slow Rate	10/30/2013 01:39		2	10			265.0	
Bump Plug	10/30/2013 01:43						950.0	PLUG LANDED
Check Floats	10/30/2013 01:46							FLOATS HELD
End Job	10/30/2013 01:47							GOOD CIRCULATION THROUGH OUT JOB, PIPE NOT MOVED DURING JOB, 20 BBLS CEMENT TO SURFACE
Post-Job Safety Meeting (Pre Rig-Down)	10/30/2013 01:50							ATTENDED BY ALL HES CREW
Rig-Down Equipment	10/30/2013 02:00							
Depart Location Safety Meeting	10/30/2013 02:50							ATTENDED BY ALL HES CREW
Crew Leave Location	10/30/2013 03:00							THANK YOU FOR USING HALLIBURTON CEMENT, ERIC CARTER AND CREW.

WPX - PA 414-12  
9.625" SURFACE



### Local Event Log

1 START JOB	00:56:23	2 FILL LINES	00:56:32	3 TEST LINES	00:58:51
4 PUMP SPACER	01:03:09	5 PUMP TAIL CEMENT	01:11:47	6 SHUTDOWN	01:26:24
7 DROP TOP PLUG	01:27:53	8 PUMP DISPLACEMENT	01:28:14	9 SLOW RATE	01:39:52
10 BUMP PLUG	01:43:02	11 CHECK FLOATS	01:46:18	12 END JOB	01:47:01

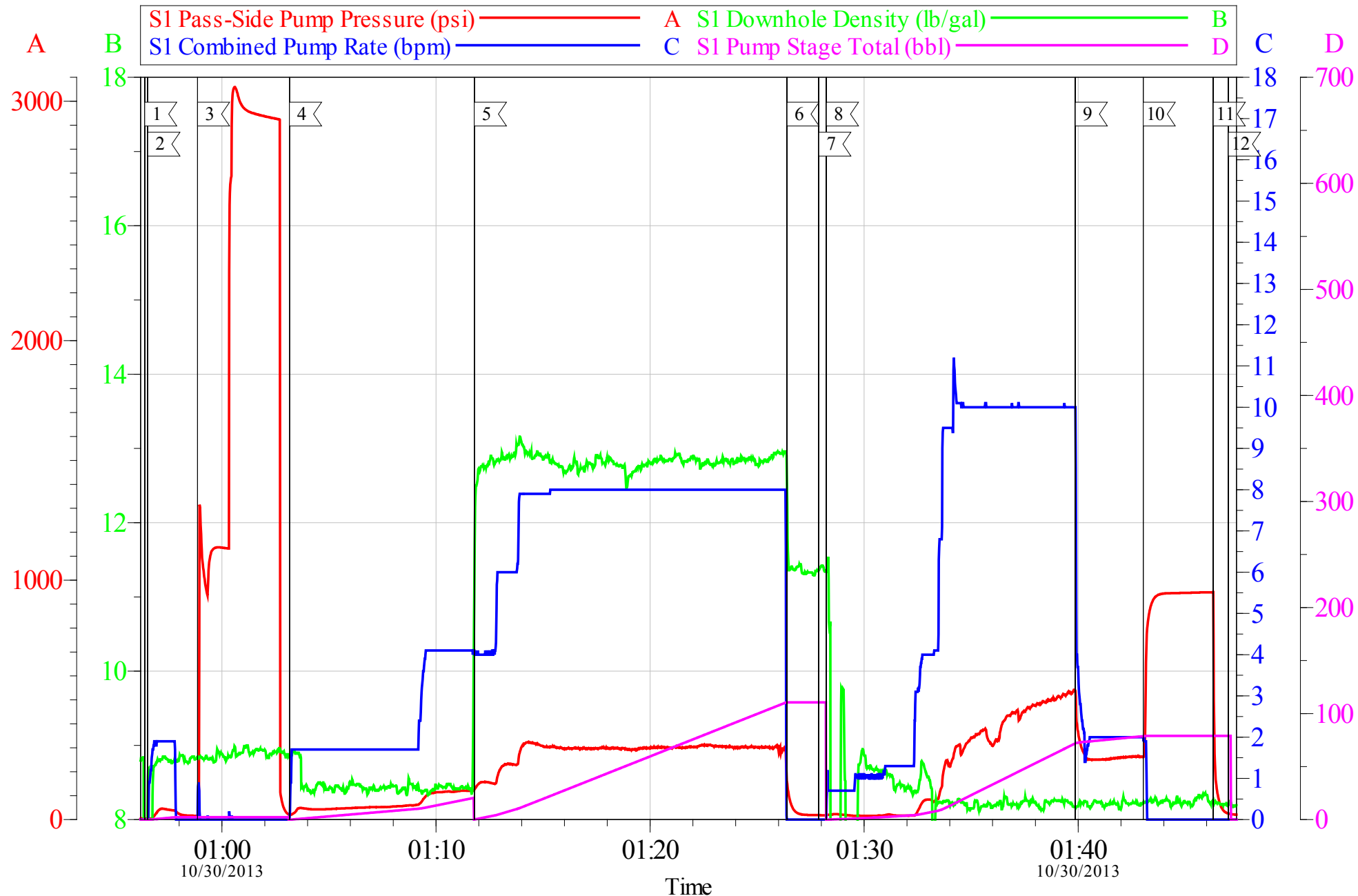
Customer: WPX ENERGY ROCKY MOUNTAIN LLC-EBUS  
Well Description: PA 414-12  
Company Rep: W.C. WILSON

Job Date: 30-Oct-2013  
Job Type: SURFACE  
Service Supervisor: ERIC CARTER

Sales Order #: 900856269  
ADC Used: YES  
Elite#/Operator: 3/ANDREW LINN

OptiCem v6.4.10  
30-Oct-13 01:58

WPX - PA 414-12  
9.625" SURFACE



Customer: WPX ENERGY ROCKY MOUNTAIN LLC-EBUS  
Well Description: PA 414-12  
Company Rep: W.C. WILSON

Job Date: 30-Oct-2013  
Job Type: SURFACE  
Service Supervisor: ERIC CARTER

Sales Order #: 900856269  
ADC Used: YES  
Elite#/Operator: 3/ANDREW LINN

OptiCem v6.4.10  
30-Oct-13 01:58

# HALLIBURTON

## Water Analysis Report

Company: WPX

Submitted by: ERIC CARTER

Attention: J.Trout

Lease: NABORS 577

Well #: PA 414-12

Date: 1/6/2014

Date Rec.: 1/6/2014

S.O.#: 900856269

Job Type: SURFACE

Specific Gravity	<i>MAX</i>	<i>1</i>
pH	<i>8</i>	<i>7</i>
Potassium (K)	<i>5000</i>	<i>1000</i> Mg / L
Hrdness	<i>500</i>	<i>250</i> Mg / L
Iron (FE2)	<i>300</i>	<i>10</i> Mg / L
Chlorides (Cl)	<i>3000</i>	<i>500</i> Mg / L
Sulfates (SO <sub>4</sub> )	<i>1500</i>	<i>&lt;200</i> Mg / L
Temp	<i>40-80</i>	<i>60</i> Deg
Total Dissolved Solids		<i>OR</i> Mg / L

Respectfully: ERIC CARTER

Title: CEMENTING SUPERVISOR

Location: Grand Junction, CO

NOTICE: This report is limited to the described sample tested. Any person using or relying on this report agrees that Halliburton shall not be liable for any loss or damage whether due to act or omission resulting from such report or its use.



<b>Sales Order #:</b> 900856269	<b>Line Item:</b> 10	<b>Survey Conducted Date:</b> 10/30/2013
<b>Customer:</b> WPX ENERGY ROCKY MOUNTAIN LLC-EBUS		<b>Job Type (BOM):</b> CMT SURFACE CASING BOM
<b>Customer Representative:</b> W.C. WILSON		<b>API / UWI: (leave blank if unknown)</b> AFEYCQJPQKKP1OKCAA
<b>Well Name:</b> PA		<b>Well Number:</b> 414-12
<b>Well Type:</b> Development Well	<b>Well Country:</b> United States of America	
<b>H2S Present:</b>	<b>Well State:</b> Colorado	<b>Well County:</b> Garfield

Dear Customer,

We hope that you were satisfied with the service quality of this job performed by Halliburton. It is the aim of our management and service personnel to deliver equipment and service of a standard unmatched in the service sector of the energy industry.

Please take the time to let us know if our performance met with your satisfaction. Please be as critical as possible to ensure we constantly improve our service. Your comments are of great value to us and are intended for the exclusive use of Halliburton.

#### CUSTOMER SATISFACTION SURVEY

CATEGORY	CUSTOMER SATISFACTION RESPONSE	
Survey Conducted Date	The date the survey was conducted	10/30/2013
Survey Interviewer	The survey interviewer is the person who initiated the survey.	ERIC CARTER (HX15491)
Customer Participation	Did the customer participate in this survey? (Y/N)	Yes
Customer Representative	Enter the Customer representative name	W.C. WILSON
HSE	Was our HSE performance satisfactory? Circle Y or N	Yes
Equipment	Were you satisfied with our Equipment? Circle Y or N	Yes
Personnel	Were you satisfied with our people? Circle Y or N	Yes
Customer Comment	Customer's Comment	

CUSTOMER SIGNATURE

<b>Sales Order #:</b> 900856269	<b>Line Item:</b> 10	<b>Survey Conducted Date:</b> 10/30/2013
<b>Customer:</b> WPX ENERGY ROCKY MOUNTAIN LLC-EBUS		<b>Job Type (BOM):</b> CMT SURFACE CASING BOM
<b>Customer Representative:</b> W.C. WILSON		<b>API / UWI: (leave blank if unknown)</b> AFEYCQJPQKKP1OKCAAA
<b>Well Name:</b> PA		<b>Well Number:</b> 414-12
<b>Well Type:</b> Development Well	<b>Well Country:</b> United States of America	
<b>H2S Present:</b>	<b>Well State:</b> Colorado	<b>Well County:</b> Garfield

*KEY PERFORMANCE INDICATORS*

General	
<b>Survey Conducted Date</b> The date the survey was conducted	10/30/2013

Cementing KPI Survey	
<b>Type of Job</b> Select the type of job. (Cementing or Non-Cementing)	0
<b>Select the Maximum Deviation range for this Job</b> What is the highest deviation for the job you just completed? This may not be the maximum well deviation.	Vertical
<b>Total Operating Time (hours)</b> Total Operating Hours Including Rig-up, Pumping, Rig-down. Enter in decimal format.	2.5
<b>HSE Incident, Accident, Injury</b> HSE Incident, Accident, Injury. This should be recordable incidents only.	No
<b>Was the job purpose achieved?</b> Was the job delivered correctly as per customer agreed design?	Yes
<b>Operating Hours (Pumping Hours)</b> Total number of hours pumping fluid on this job. Enter in decimal format.	1
<b>Customer Non-Productive Rig Time (hrs)</b> Lost time due to Halliburton in the start, execution, or completion of an ordered service or product, or delays in a follow-on service. Enter in decimal format. 0 if none.	0
<b>Type of Rig Classification Job Was Performed</b> Type Of Rig (classification) Job Was Performed On	Drilling Rig (Portable)
<b>Number Of JSAs Performed</b> Number Of Jsas Performed	5
<b>Number of Unplanned Shutdowns</b> Unplanned shutdown is when injection stops for any period of time.	0
<b>Was this a Primary Cement Job (Yes / No)</b>	Yes

<b>Sales Order #:</b> 900856269	<b>Line Item:</b> 10	<b>Survey Conducted Date:</b> 10/30/2013
<b>Customer:</b> WPX ENERGY ROCKY MOUNTAIN LLC-EBUS		<b>Job Type (BOM):</b> CMT SURFACE CASING BOM
<b>Customer Representative:</b> W.C. WILSON		<b>API / UWI: (leave blank if unknown)</b> AFEYCQJPQKKP1OKCAA
<b>Well Name:</b> PA		<b>Well Number:</b> 414-12
<b>Well Type:</b> Development Well	<b>Well Country:</b> United States of America	
<b>H2S Present:</b>	<b>Well State:</b> Colorado	<b>Well County:</b> Garfield

Primary Cement Job= Casing job, Liner job, or Tie-back job.	
<b>Did We Run Wiper Plugs?</b> Did We Run Top And Bottom Casing Wiper Plugs?	Top
<b>Mixing Density of Job Stayed in Designed Density Range (0-100%)</b> Density Range defined as +/- .20 ppg. Calculation: Total BBLs cement mixed at designed density divided by total BBLs of cement multiplied by 100	98
<b>Was Automated Density Control Used?</b> Was Automated Density Control (ADC) Used ?	Yes
<b>Pump Rate (percent) of Job Stayed At Designed Pump Rate</b> Pump Rate range defined as +/- 1bbl/min. Calculation: Total BBLs of fluid pumped at the designed rate divided by Total BBLs of fluid pumped, multiplied by 100	98
<b>Nbr of Remedial Sqz Jobs Rqd - Competition</b> Number Of Remedial Squeeze Jobs Required After Primary Job Performed By Competition	0
<b>Nbr of Remedial Plug Jobs Rqd - HES</b> Number Of Remedial Plug Jobs Needed After Primary Plug Pumped By HES	0
<b>Nbr of Remedial Sqz Jobs Rqd - HES</b> Number Of Remedial Squeeze Jobs Required After Primary Job Performed By HES	0