

Well Location Plat

SAMSON RESOURCES COMPANY
COLORADO 32-7 #10-3

923' FNL & 1351' FWL
Sec. 4, T32N, R7W, NMPM
La Plata Co., CO

Ground Elev. 6284.1 (NGVD 29)
(So. Ute 32-7 #10 = 6284.0gr.)

Lat. 37.05076° N
Long. 107.61847° W (NAD 83)

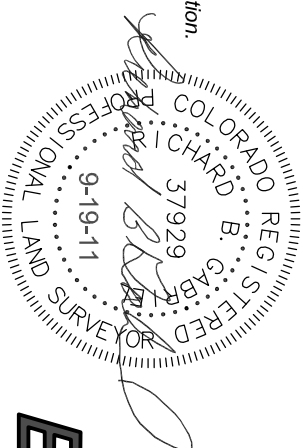
Field Completion Date: 15 Sep 2011
Plat Date: 19 Sep 2011

Non-crop Pasture
Existing Well Facilities

This is to certify that this plat was prepared from field notes of actual surveys made by me, or under my supervision, and that the same are true and correct to the best of my knowledge and belief.

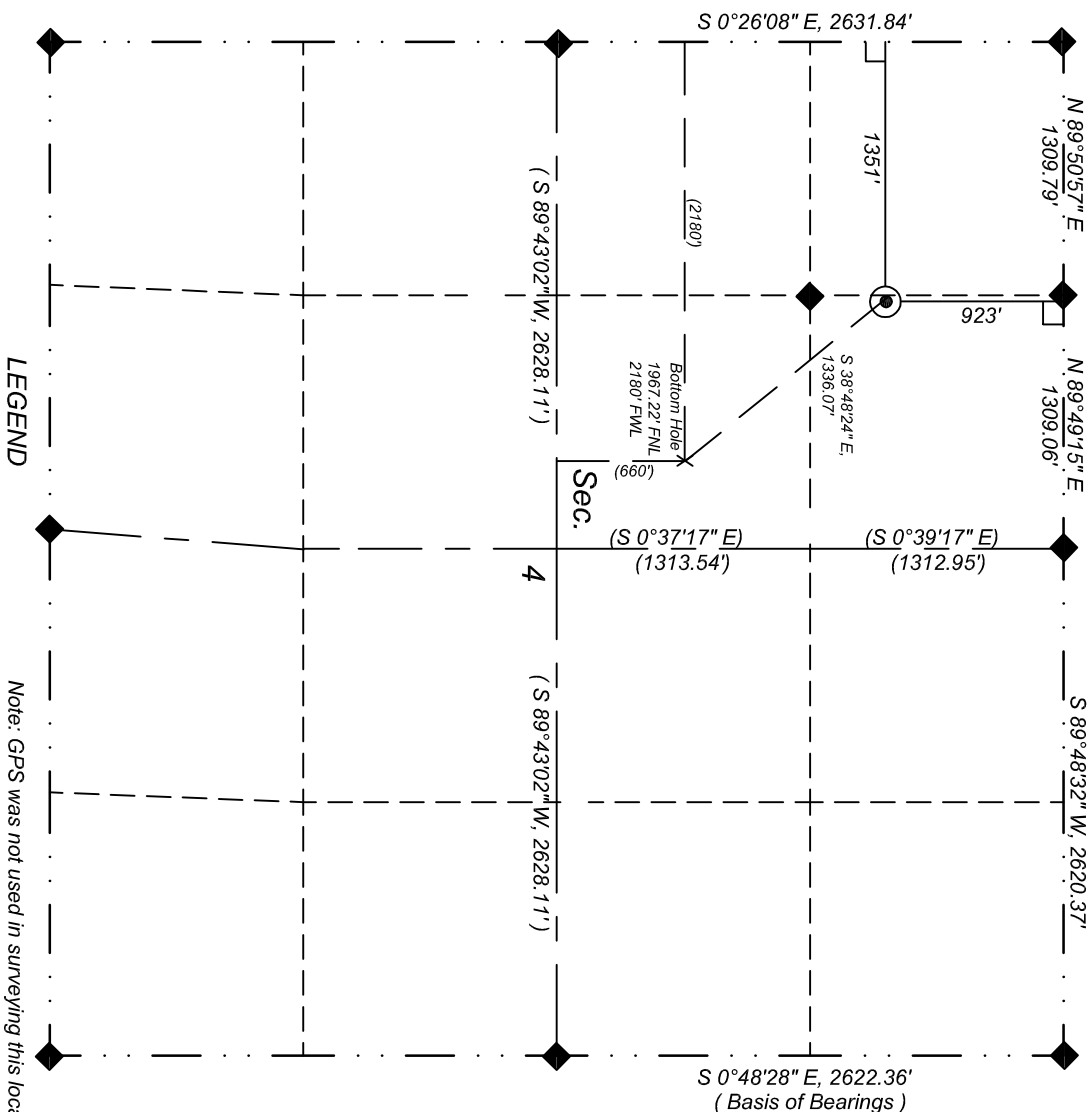
Richard B. Gabriel
Colorado PLS No. 37929

Date



ENERGY SURVEYORS, INC.

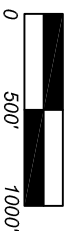
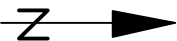
P.O. BOX 991
FAIRMINGTON, NM 87499
FAX: 801-659-4246
OFFICE: 505-325-4005
CELL: 505-360-8142



LEGEND

- Proposed Well
- Existing Well
- ◆ Std. So. Ute 3½" Al. Cap w/refs.
- ▲ Std. BLM 3½" Al. Cap w/refs.
- Private Survey Cor. w/refs.
- └ 90° Symbol
- () Record or Calc. Bearing and Dist.

Note: GPS was not used in surveying this location.



Scale : 1"=1000'

Unless otherwise noted, bearings and distances are field measured.

Rev. 17 Sep 2011