

Project: Wattenberg Field  
Site: AE (Sec.29-T06N-R62W) Weld County, CO  
Well: Wells Ranch AE30-67-1AHNC  
Wellbore: Original Drilling  
Design: APD - Rev 1

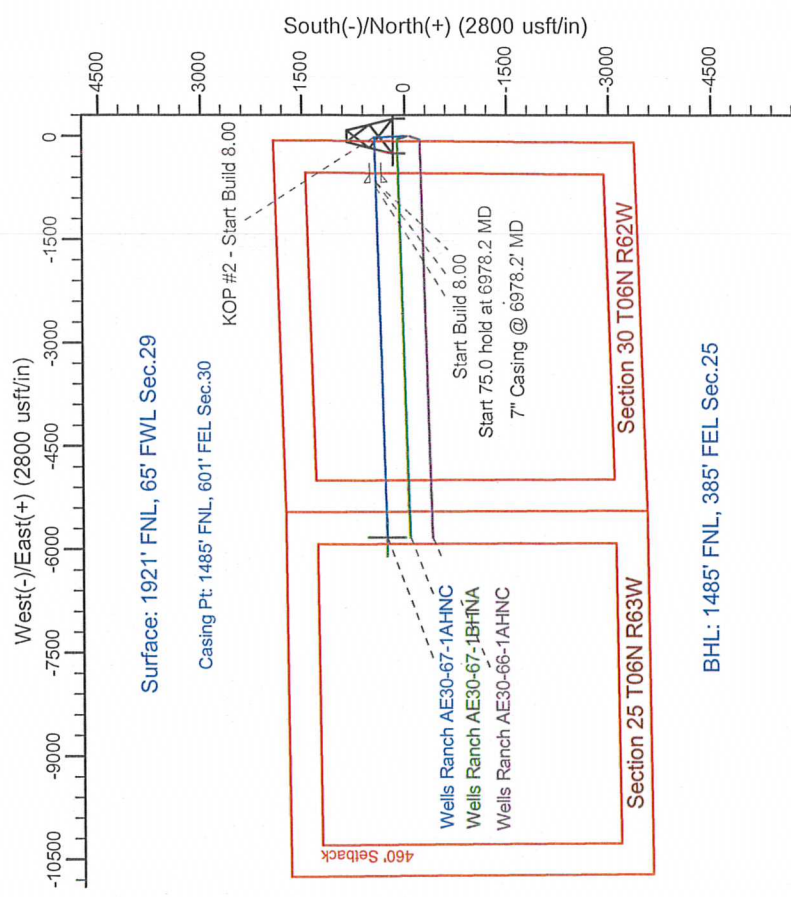
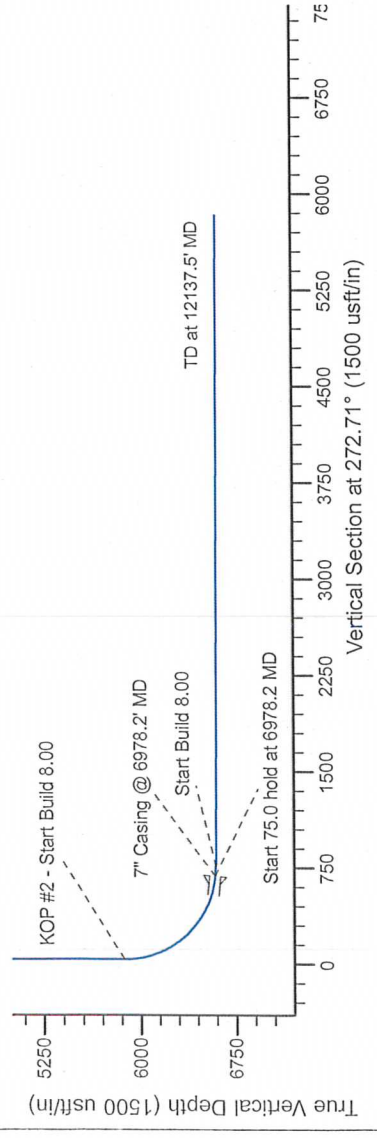
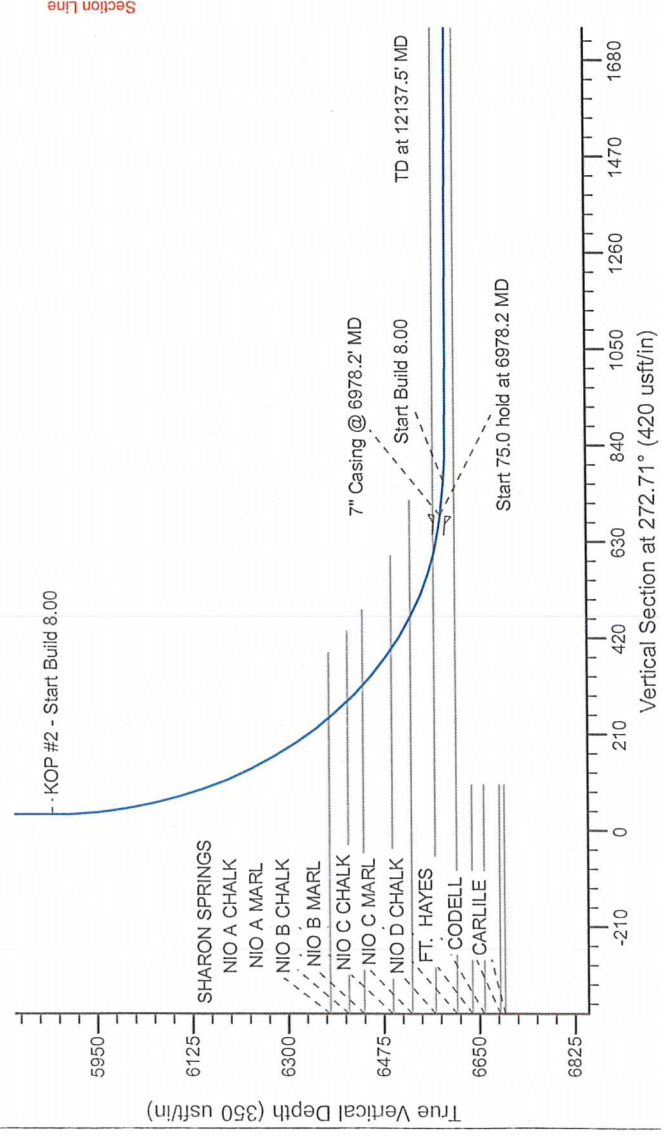
# Northern Region Drilling - Working

Geodetic System: US State Plane 1983  
Datum: North American Datum 1983  
Ellipsoid: GRS 1980  
Zone: Colorado Northern Zone  
System Datum: Mean Sea Level

SECTION DETAILS

Sec	MD	Inc	Azi	TVD	+N/-S	+E/-W	Dleg	TFace	VSect	Target
1	1200.0	0.00	0.00	0.00	0.0	0.0	0.00	0.00	0.0	0.0
2	1200.0	0.00	0.00	1200.0	0.0	0.0	0.00	0.00	0.0	0.0
3	1302.7	14.05	358.03	1895.7	85.7	-3.0	0.00	358.03	7.0	0.0
4	2398.9	0.00	358.03	2949.3	349.3	-12.0	0.00	0.00	28.5	0.0
5	3991.6	0.00	0.00	3550.0	435.0	-15.0	0.00	180.00	35.5	0.0
6	5915.7	0.00	0.00	5569.1	435.0	-15.0	0.00	0.00	35.5	0.0
7	6978.2	85.00	268.43	6582.6	417.0	-668.5	0.00	268.43	687.5	0.0
8	7053.2	85.00	268.43	6589.1	415.0	-743.2	0.00	0.00	762.0	0.0
9	7113.2	89.80	268.43	6591.9	413.3	-803.1	0.00	0.00	821.7	0.0
10	12137.5	89.80	268.43	6609.4	275.3	-5325.5	0.00	0.00	5832.0	0.0

Wells Ranch AE30-67-1AHNA BHL 1485FNL 385FEL



**T G M**

Azimuths to Grid North  
True North: -0.74°  
Magnetic North: 7.55°

Magnetic Field  
Strength: 52992.1 snT  
Dip Angle: 67.10°  
Date: 9/20/2013  
Model: IGRF200510

WELL DETAILS: Wells Ranch AE30-67-1AHNC			
0.0	North 1412354.88	East 3318304.27	Ground Level: 4765.0 Latitude 40.459680 Longitude -104.356080
Plan: APD - Rev 1 (Wells Ranch AE30-67-1AHNC/Original Drilling)			
Created By: Shailey Jewell		Date: 10:44, January 13 2014	
Checked:		Date:	
Reviewed:		Date:	
Approved:		Date:	