



NABORS

**COMPLETION
& PRODUCTION
SERVICES CO.**

SONIC LOG

Company		RESOURCE DEVELOPMENT	
Well		NININGER #11-1-1645	
Field		CHEYENNE	
County		COLORADO	
State		COLORADO	
Company		RESOURCE DEVELOPMENT TECHNOLOGY, LLC.	
Well		NININGER #11-1-1645	
Field		CHEYENNE	
County		STATE	
State		COLORADO	
Location:		API # : 05-017-07763-00	
SEC 1 TWP 16S RGE 45W		600' FNL & 600' FWL	
Permanent Datum		GROUND LEVEL	
Log Measured From		KELLY BUSHING 11' A.G.L.	
Drilling Measured From		KELLY BUSHING	
Elevation		4345	
Other Services		CDL/CNL PE/DIL	
Elevation		K.B. 4356 D.F. 4354 G.L. 4345	
Date	10/19/13		
Run Number	TWO		
Depth Driller	5590		
Depth Logger	5591		
Bottom Logged Interval	5581		
Top Log Interval	650		
Casing Driller	8 5/8" @ 681		
Casing Logger	678		
Bit Size	7 7/8"		
Type Fluid in Hole	CHEMICAL MUD		
Density / Viscosity	9.2/67		
pH / Fluid Loss	10.5/7.2		
Source of Sample	FLOWLINE		
Rim @ Meas. Temp	.70 @ 80F		
Rmf @ Meas. Temp	.52 @ 80F		
Rmc @ Meas. Temp	.84 @ 80F		
Source of Rmf / Rmc	MEASUREMENT		
Rim @ BHT	.43 @ 130F		
Time Circulation Stopped	3 HOURS		
Time Logger on Bottom	130F		
Maximum Recorded Temperature	4854		
Equipment Number	HAYS, KANSAS		
Location	JASON CAPPELLUCCI		
Recorded By	PHIL ASKEY		
Witnessed By	TOM BOWMAN		

<<< Fold Here >>>

All interpretations are opinions based on inferences from electrical or other measurements and we cannot and do not guarantee the accuracy or correctness of any interpretation, and we shall not, except in the case of gross or willful negligence on our part, be liable or responsible for any loss, costs, damages, or expenses incurred or sustained by anyone resulting from any interpretation made by any of our officers, agents or employees. These interpretations are also subject to our general terms and conditions set out in our current Price Schedule.

Comments

THANK YOU FOR USING "NABORS" HAYS, KANSAS (785) 628-6395
DIRECTIONS
CHEYENNE WELLS, CO. - EAST EDGE GO 8 3/4 S. TO RD. G - 4 3/4 W. - S. & E. INTO

Database File:

011691pe.db

Dataset Pathname:

pass7.1

Presentation Format:

slt

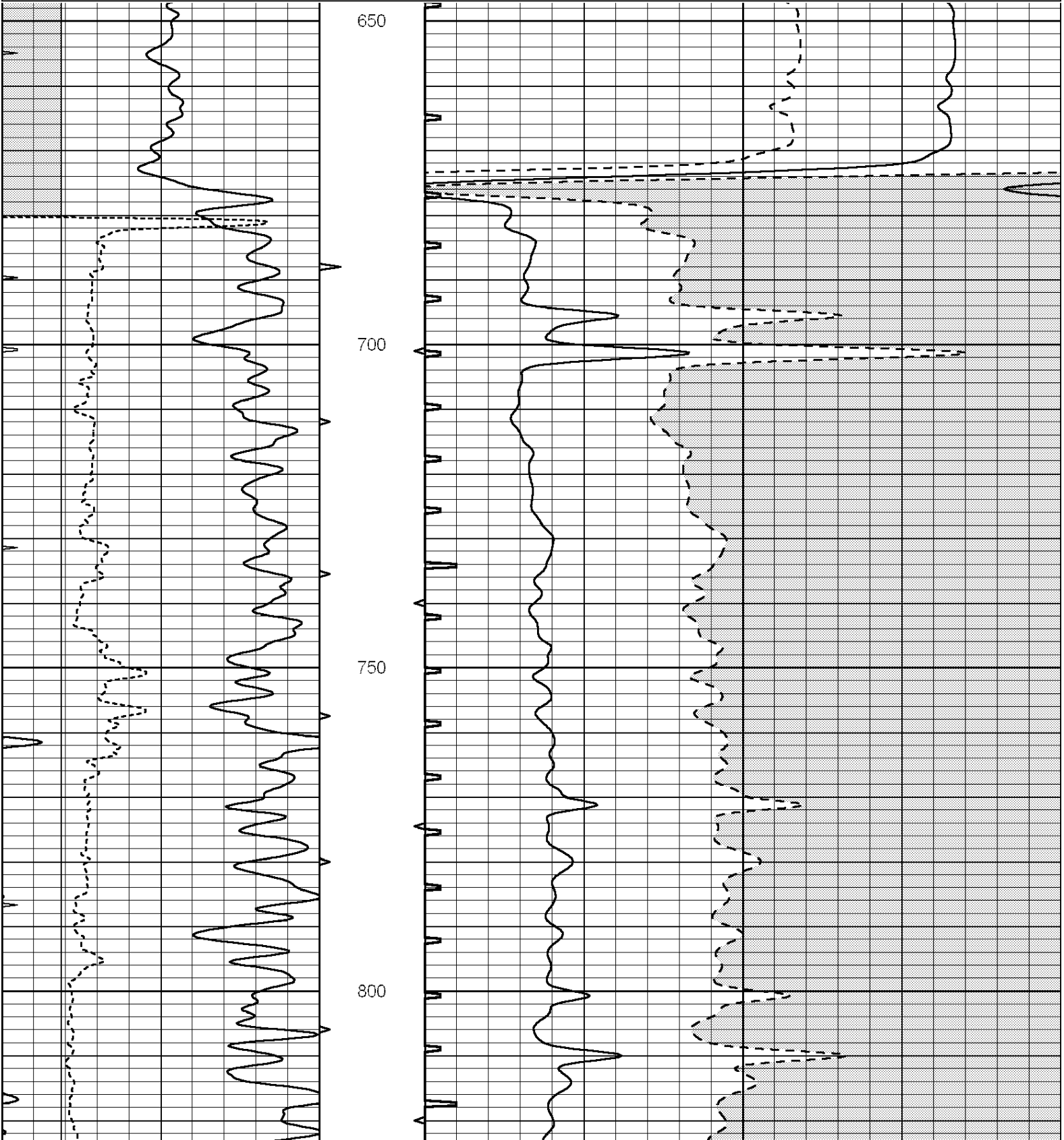
Dataset Creation:

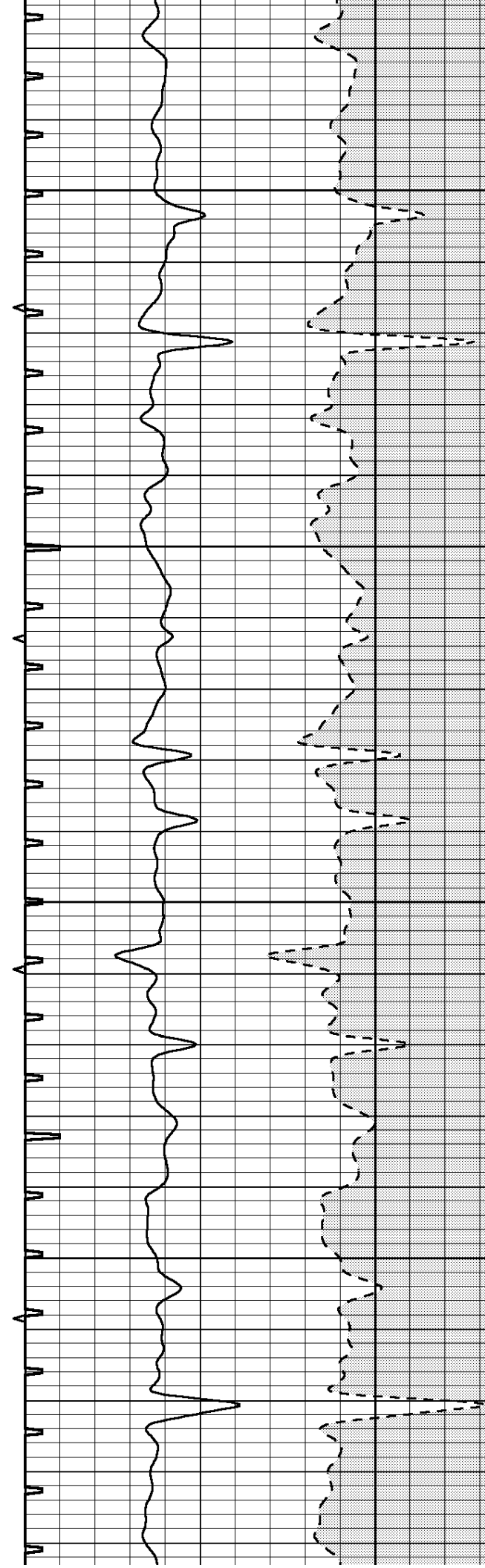
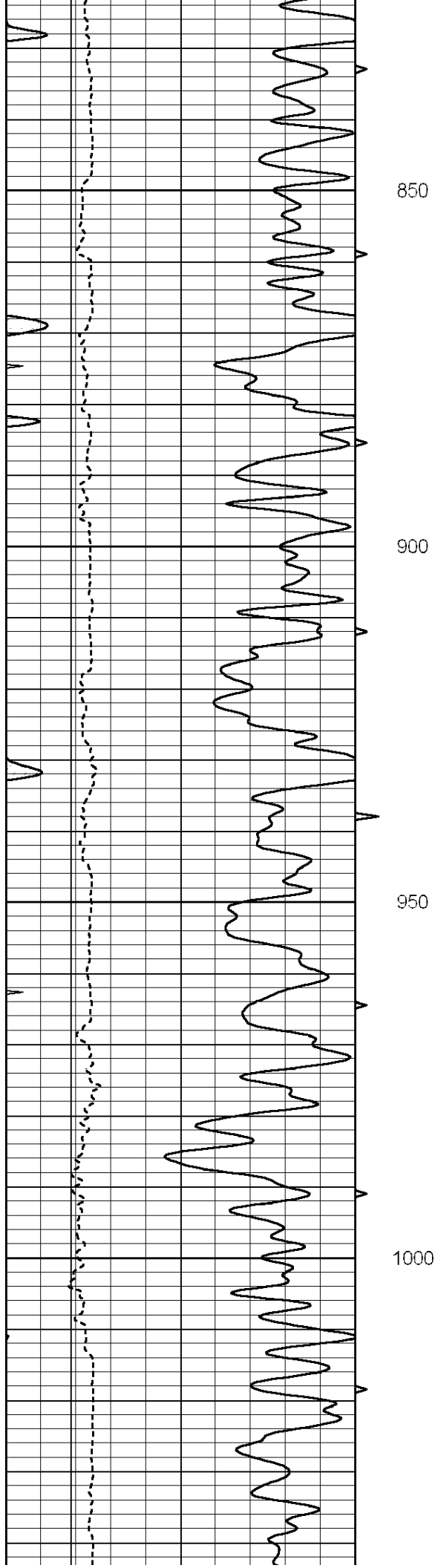
Sat Oct 19 21:28:38 2013 by Calc SOC 120430

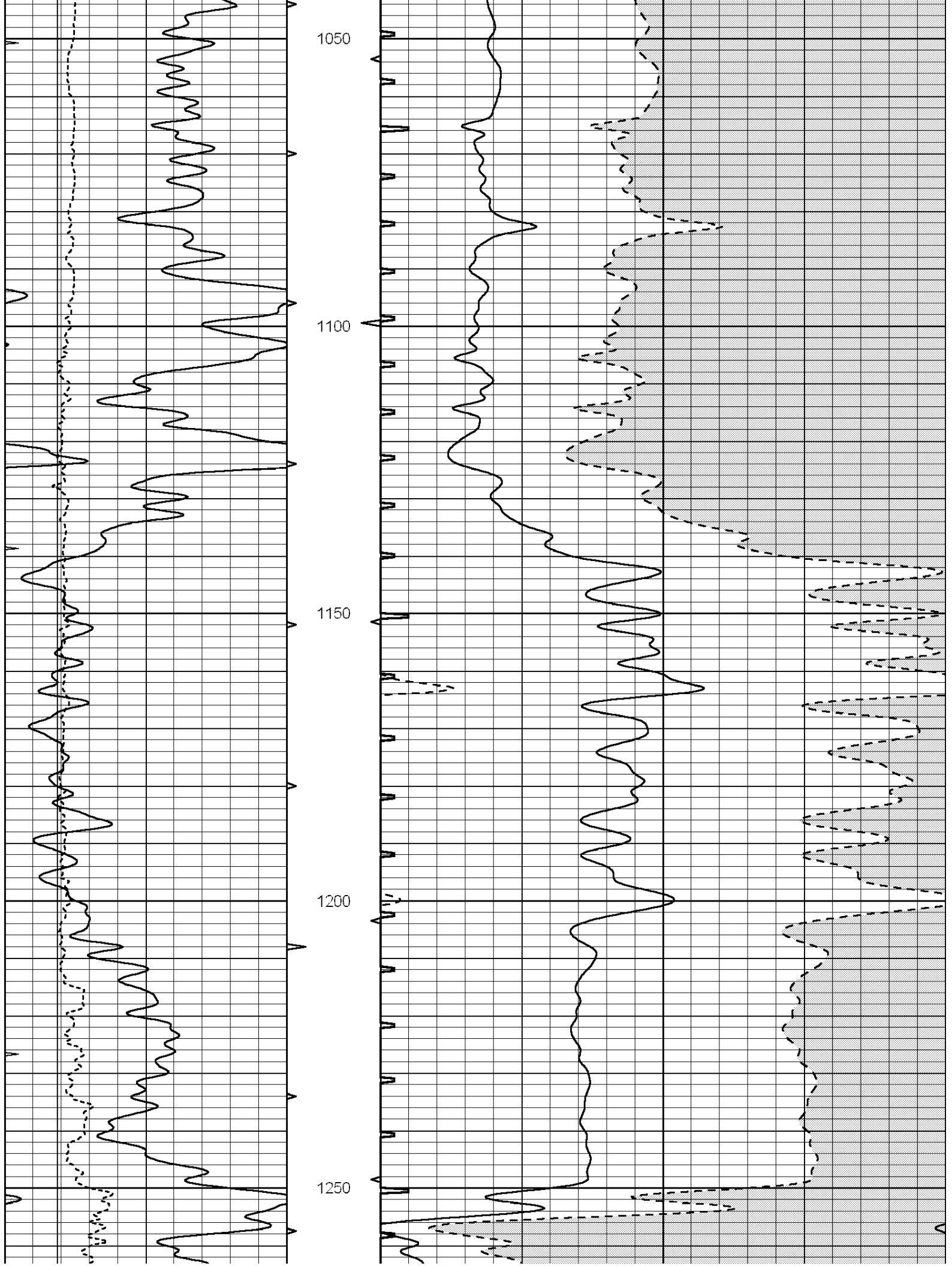
Charted by:

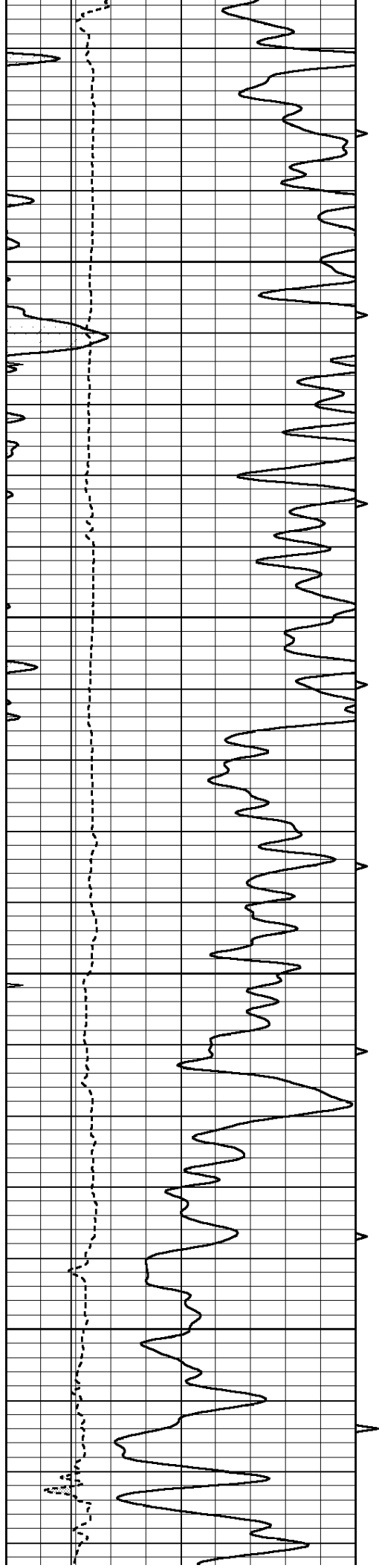
Depth in Feet scaled 1:240

0	GAMMA RAY (GAPI)	150	ABHV	140	DELTA TIME (usec/ft)		40
6	CALIPER (in)	16	10 (ft3)	0	30	SONIC POROSITY (pu)	
-----			-----				
0	MINMK	20	TBHV	0	ITT (msec)	20	
			0 (ft3)	10			







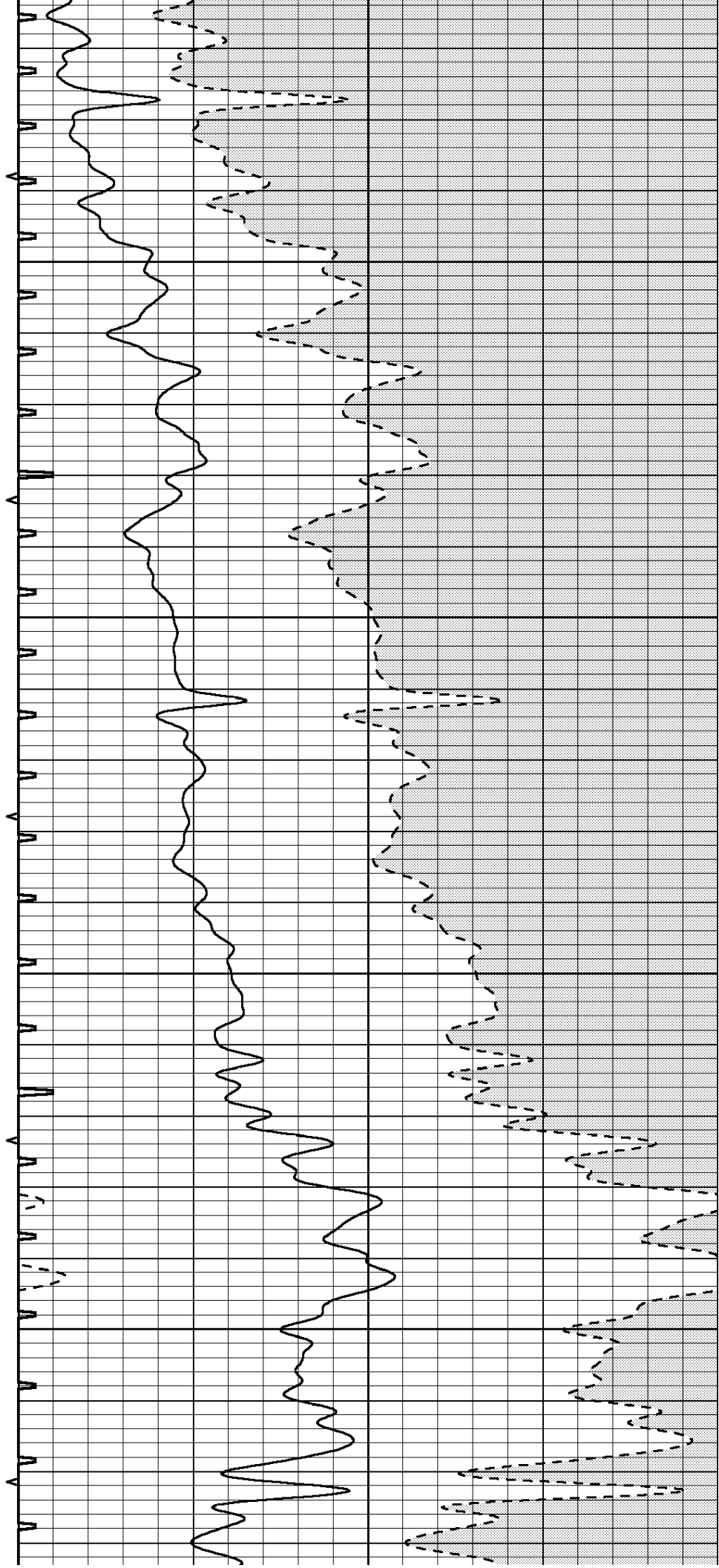


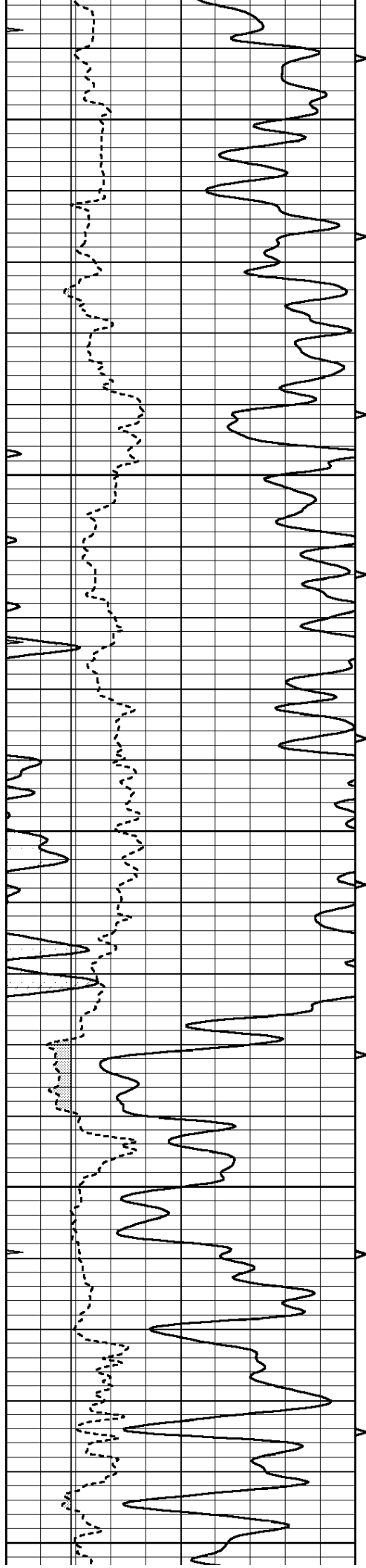
1300

1350

1400

1450





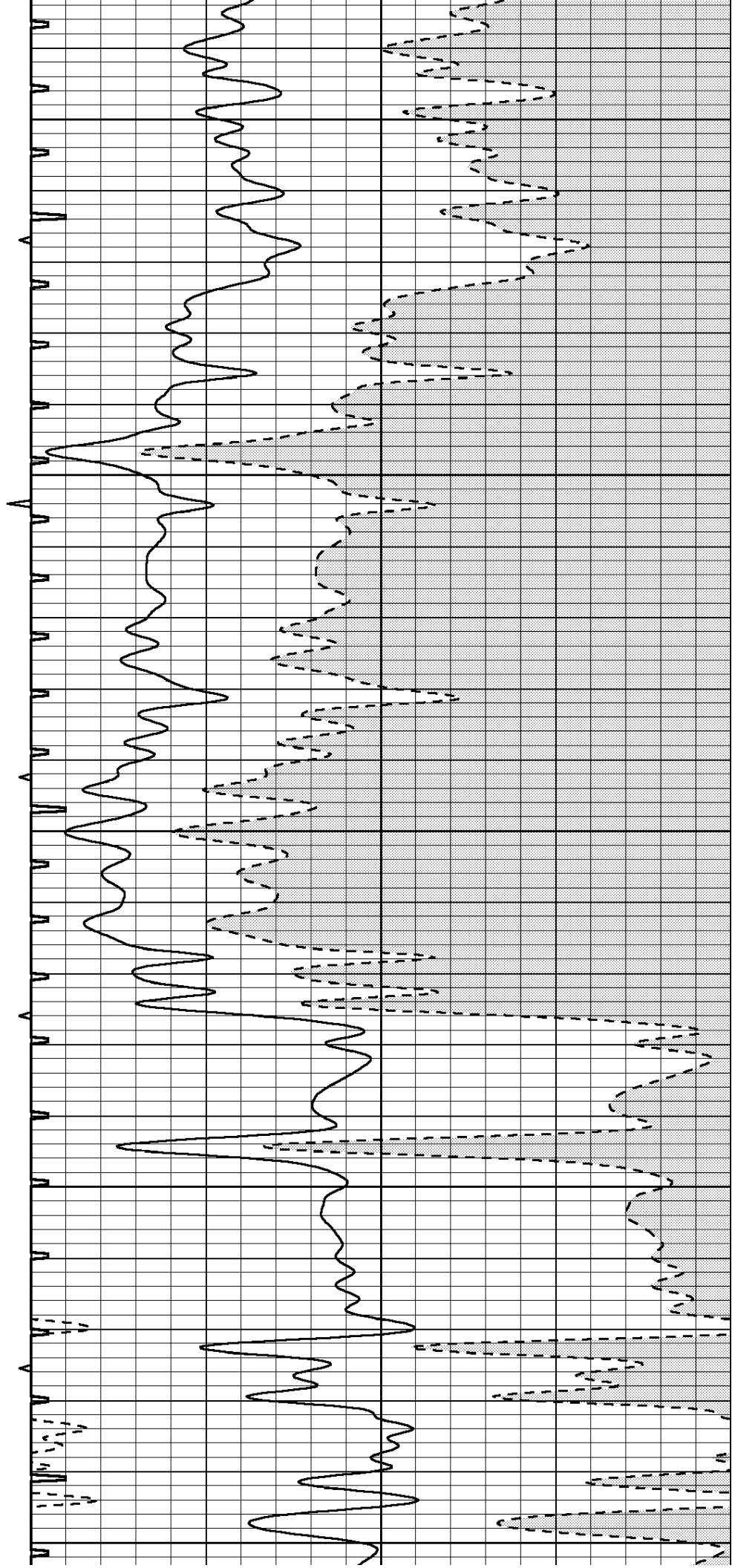
1500

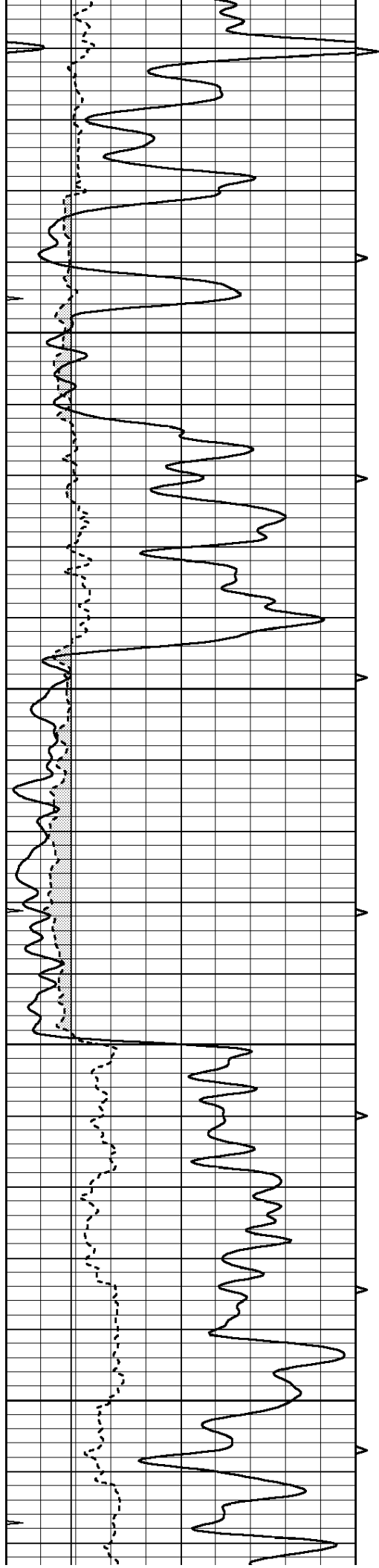
1550

1600

1650

1700



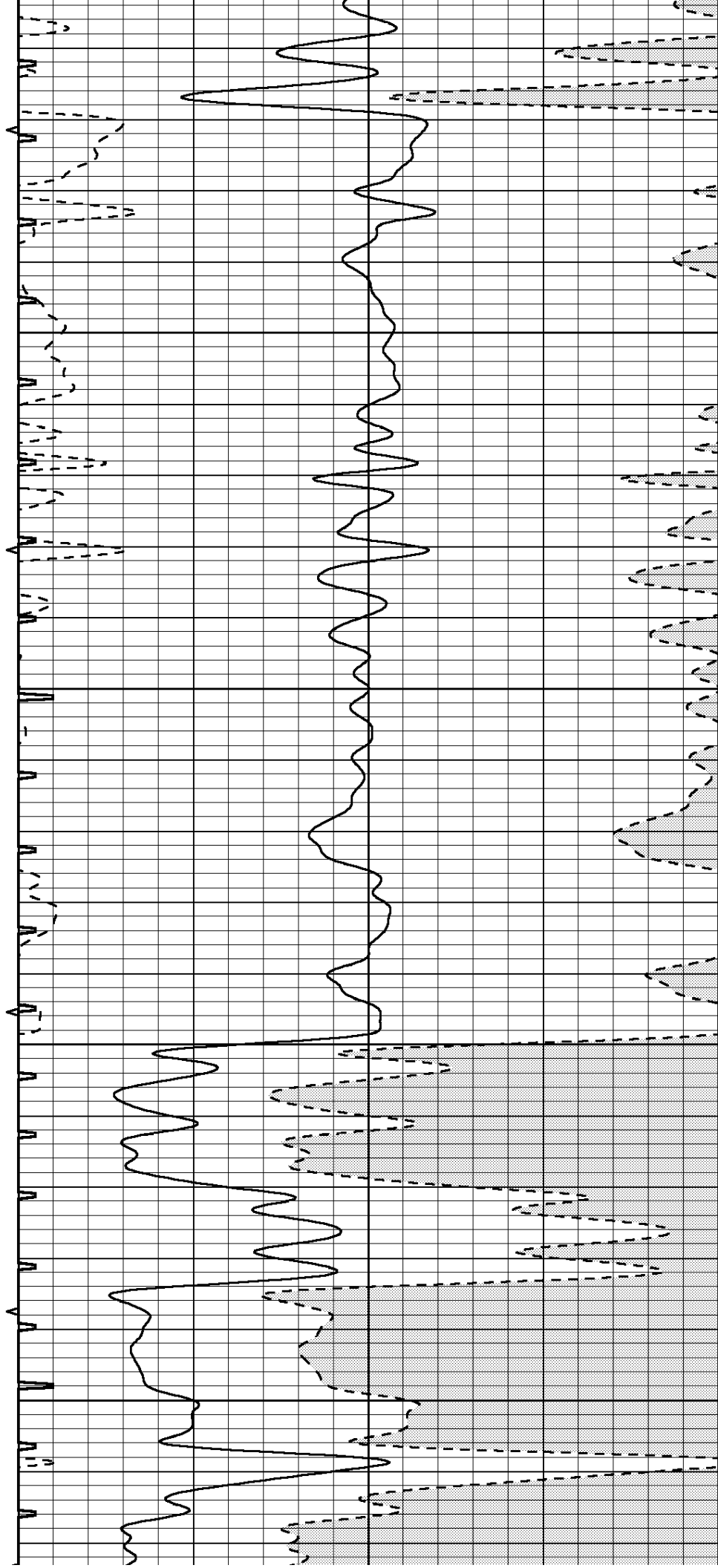


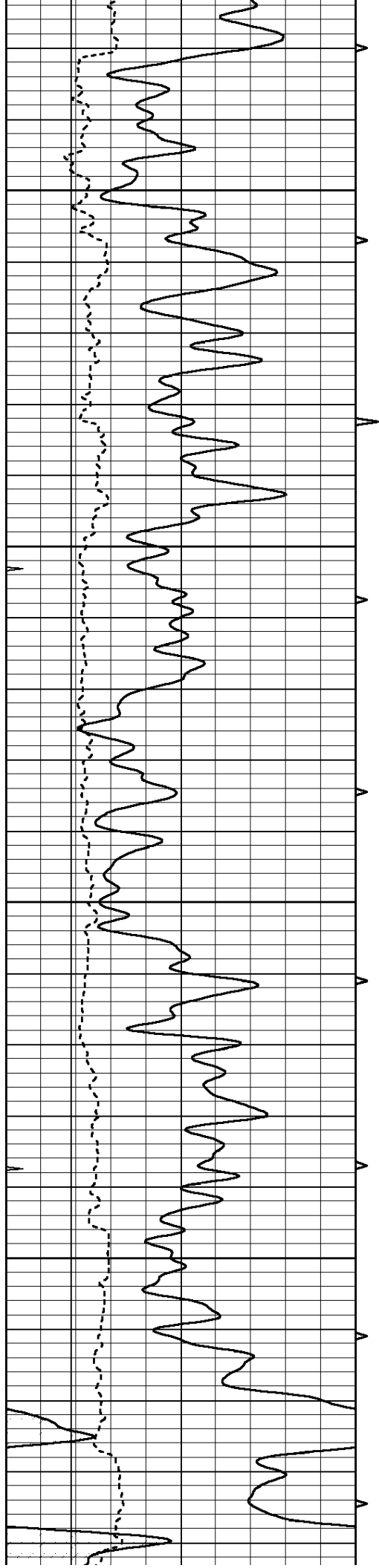
1750

1800

1850

1900



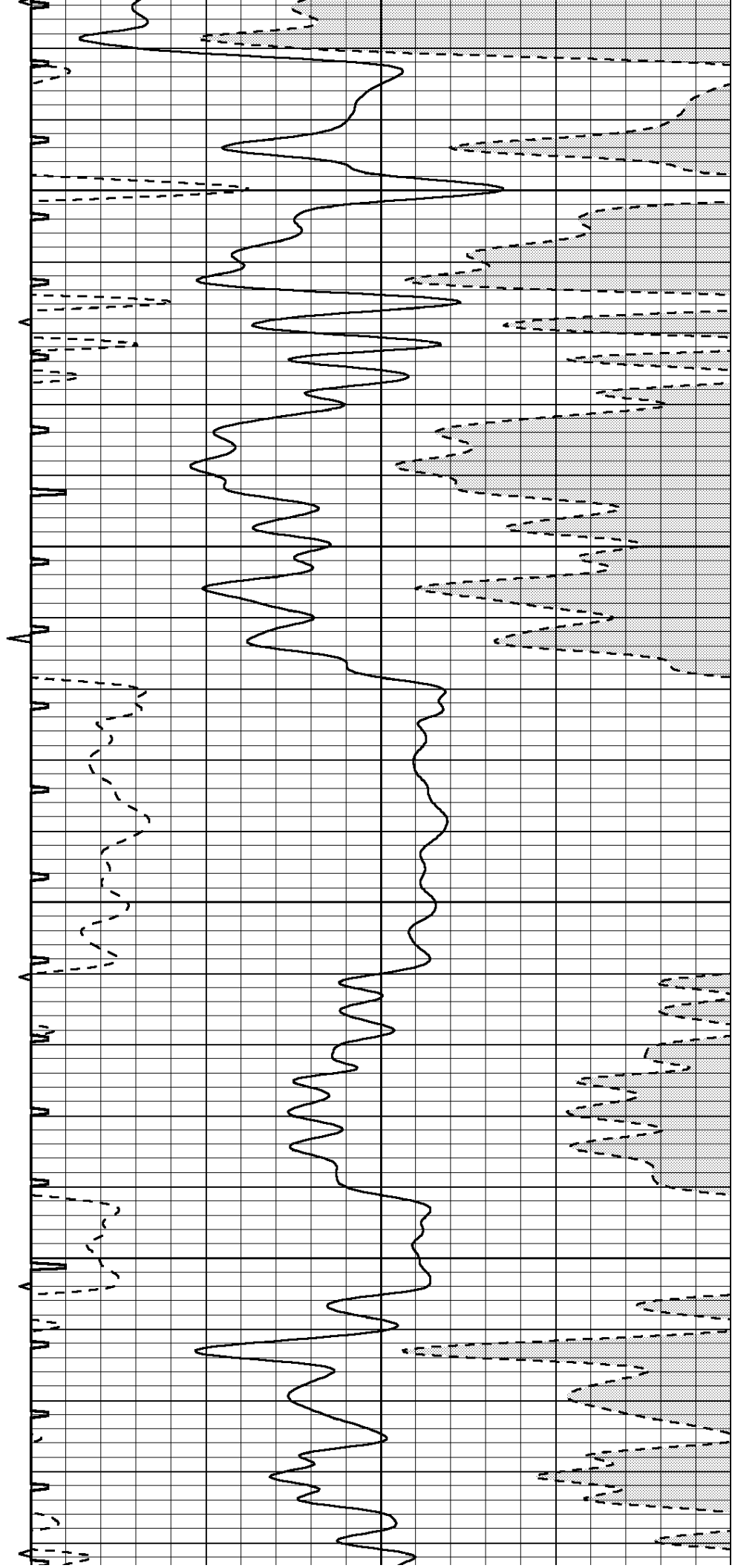


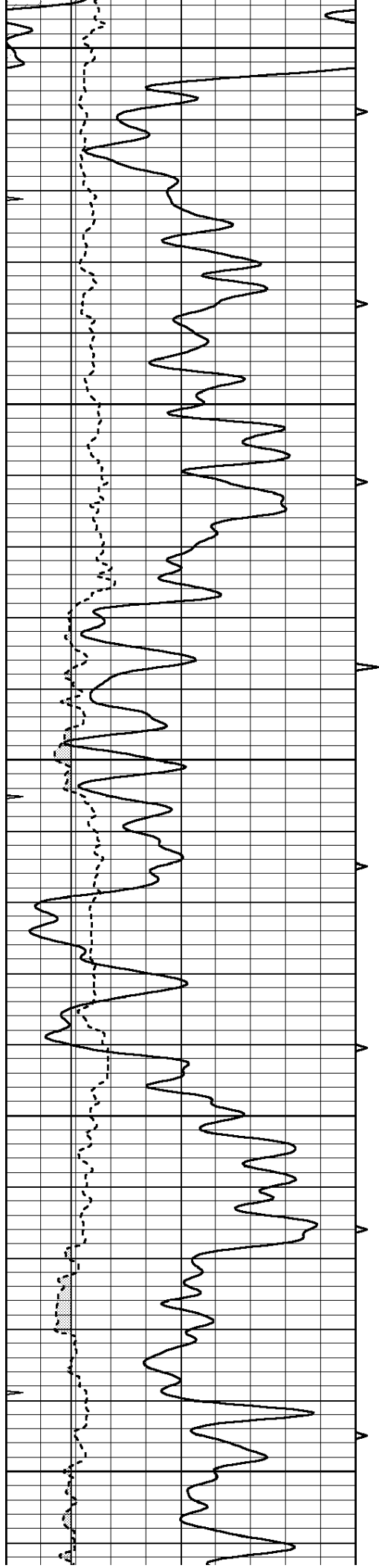
1950

2000

2050

2100





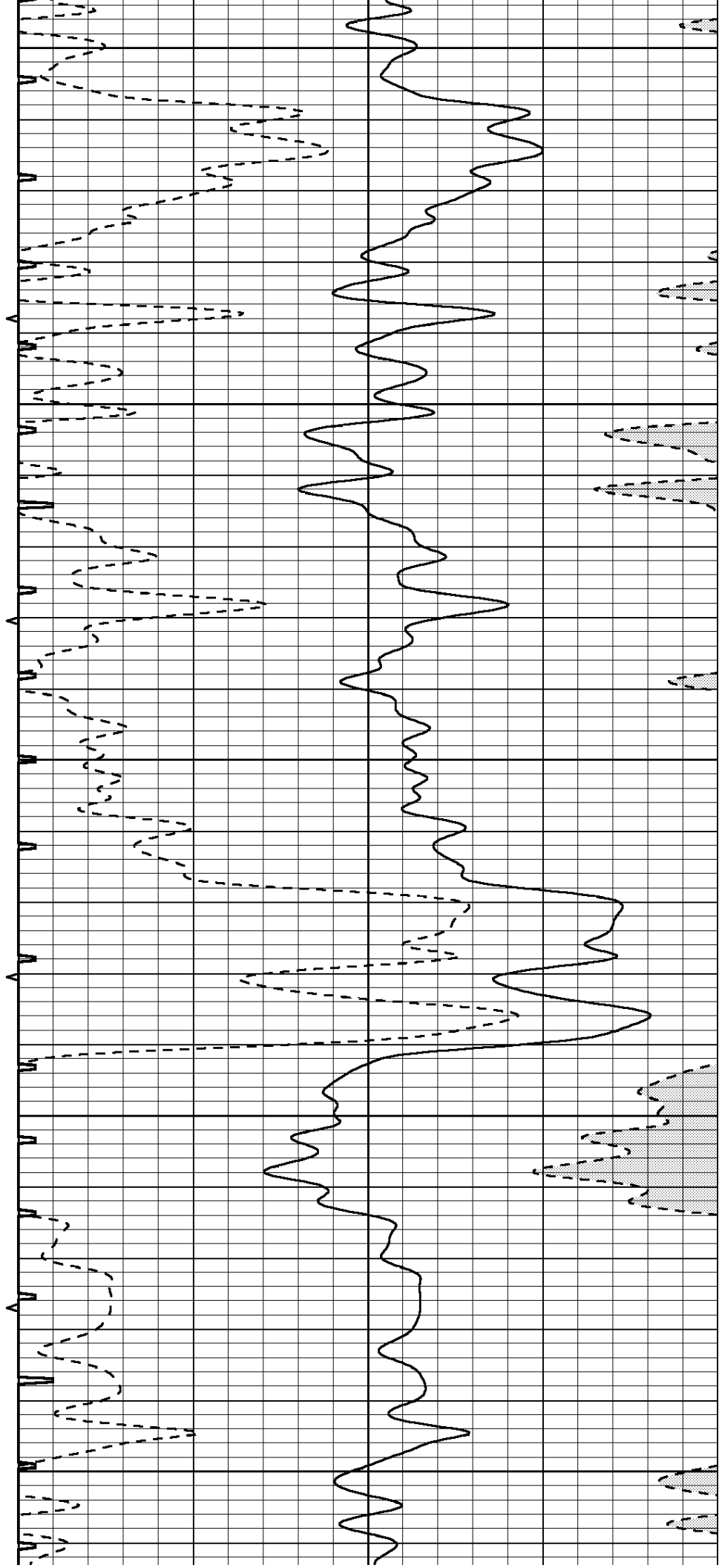
2150

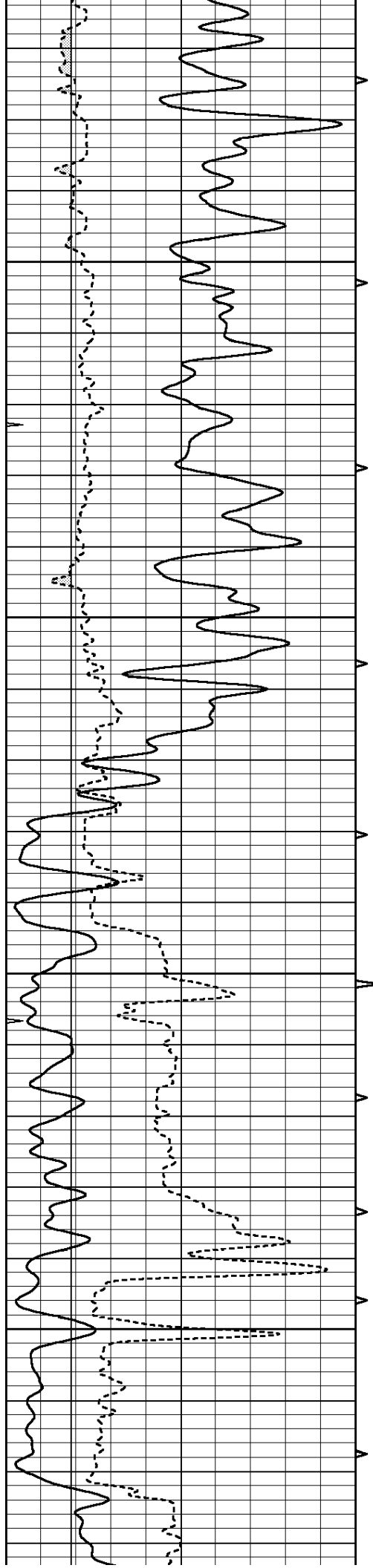
2200

2250

2300

2350



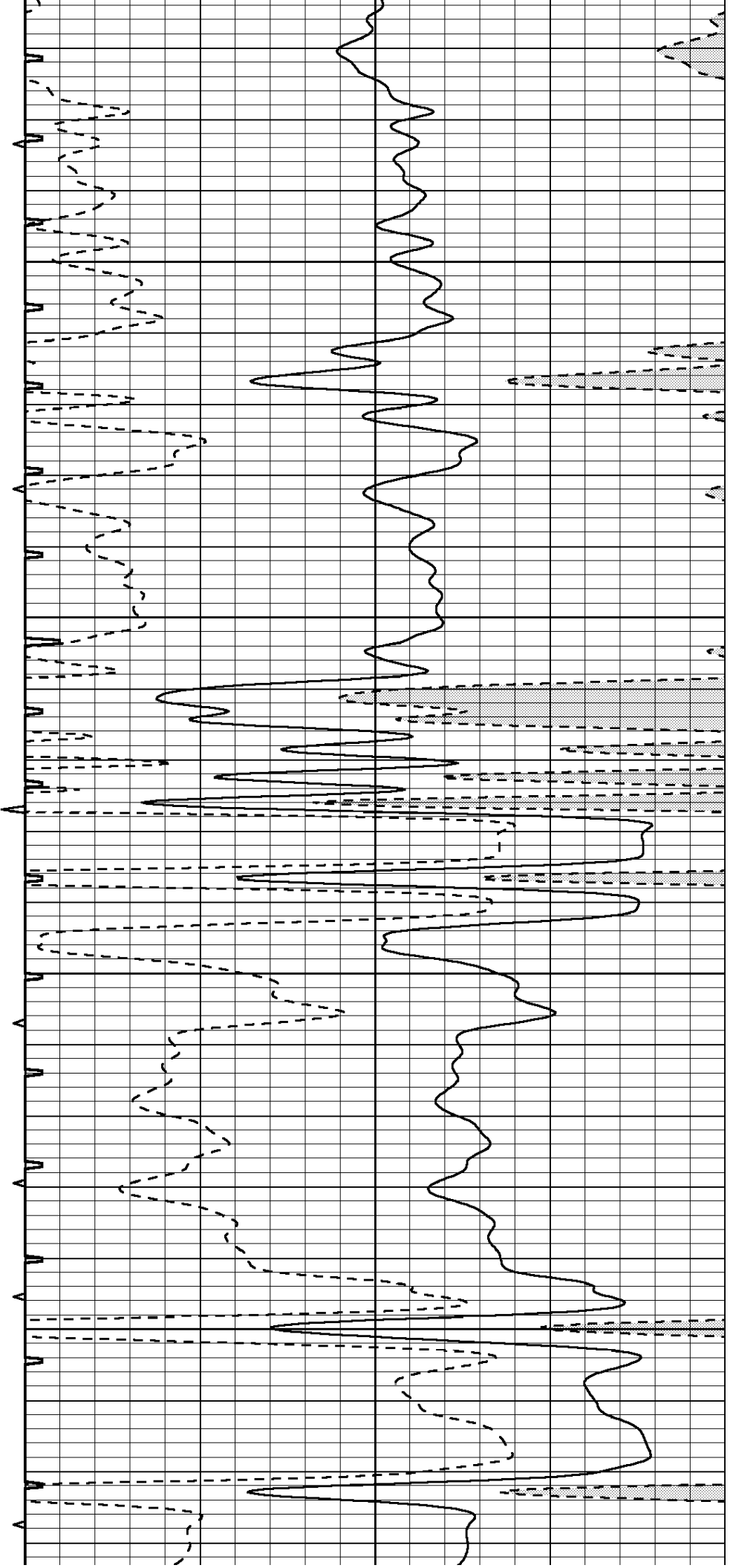


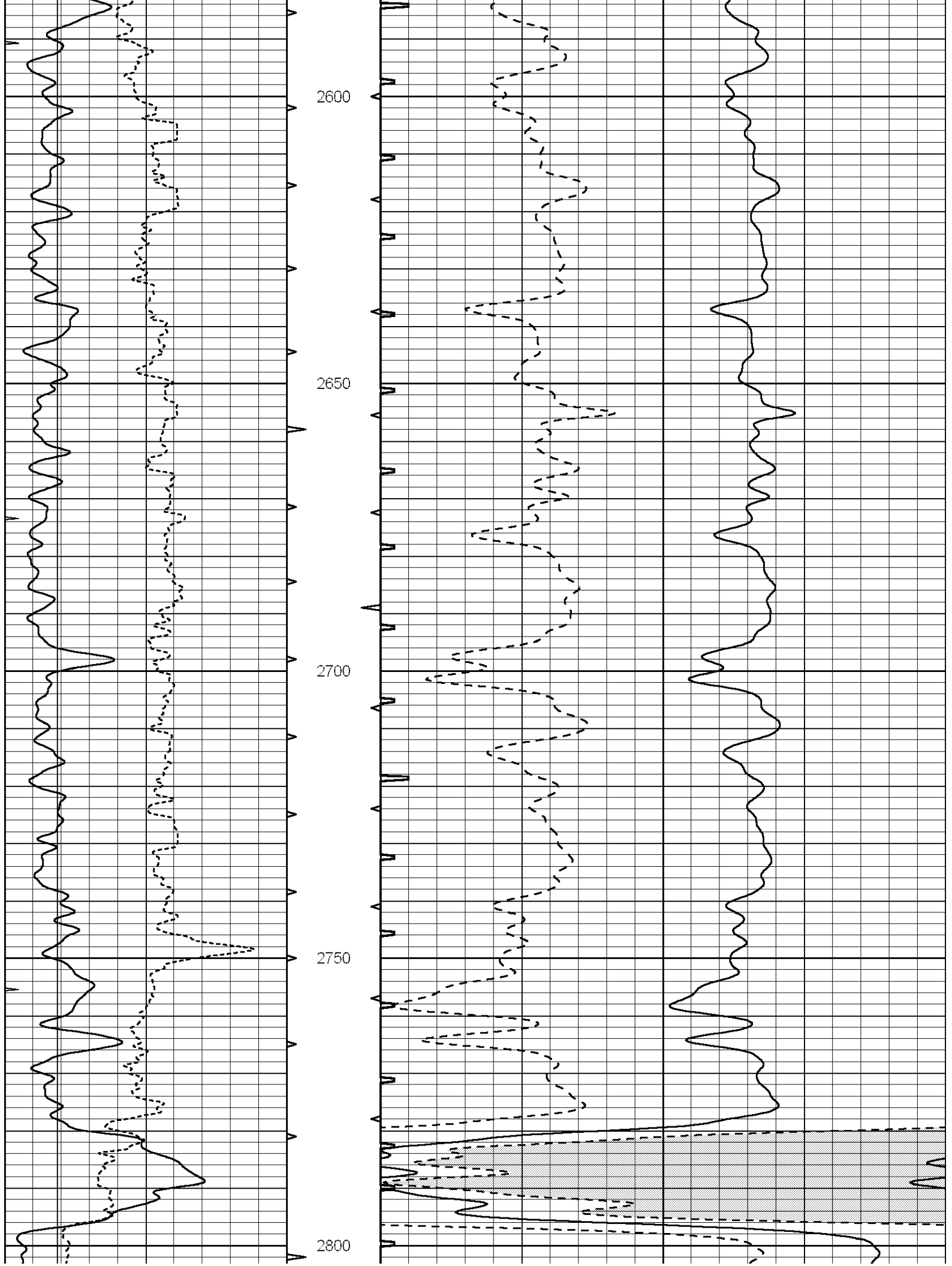
2400

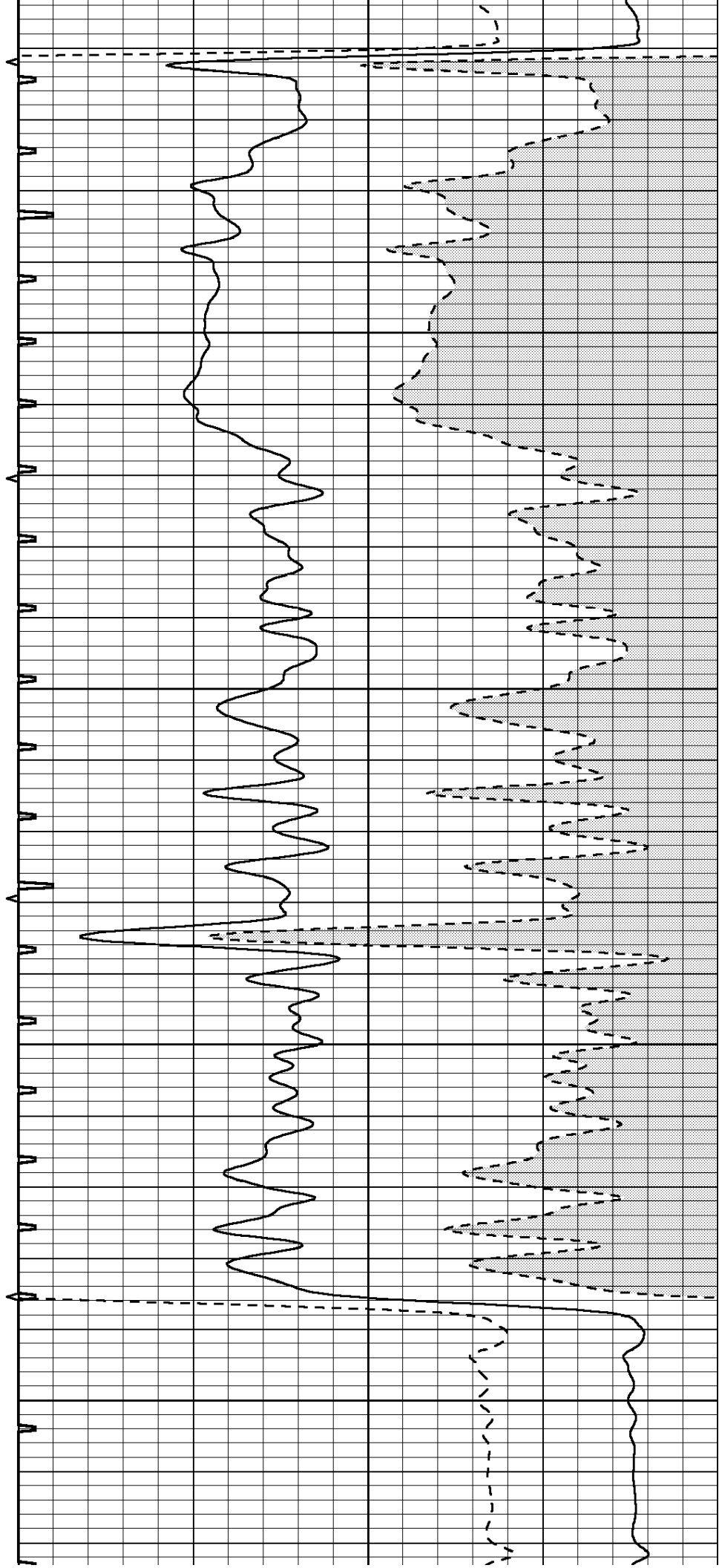
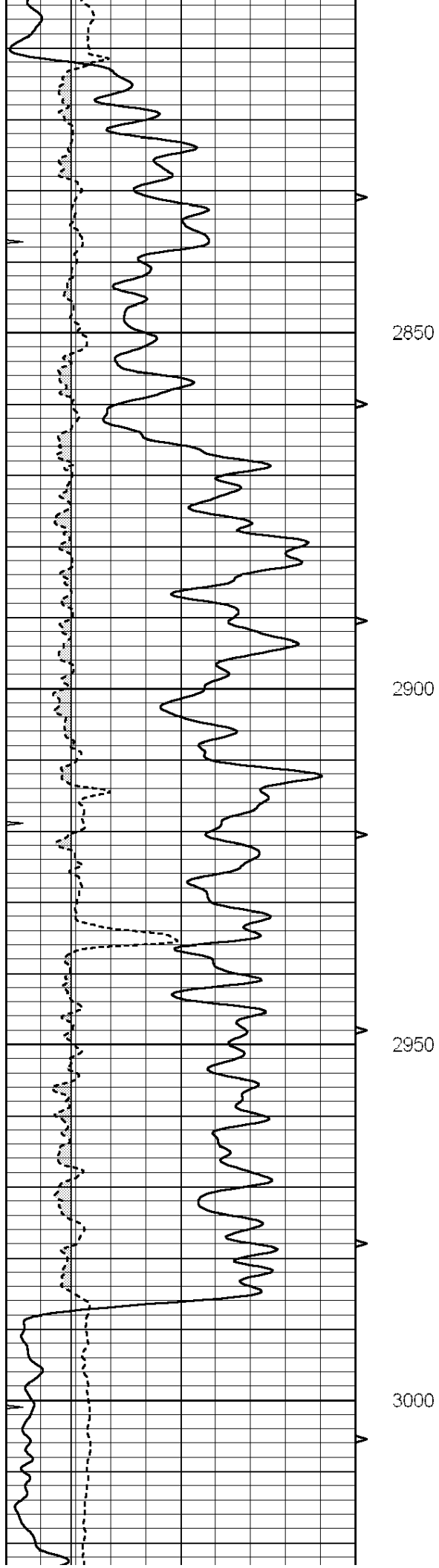
2450

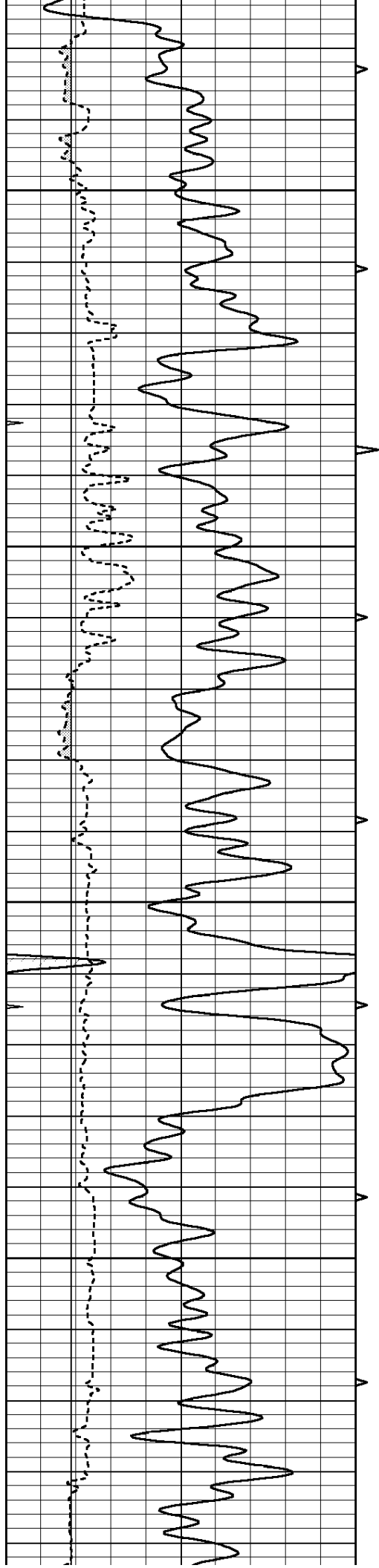
2500

2550







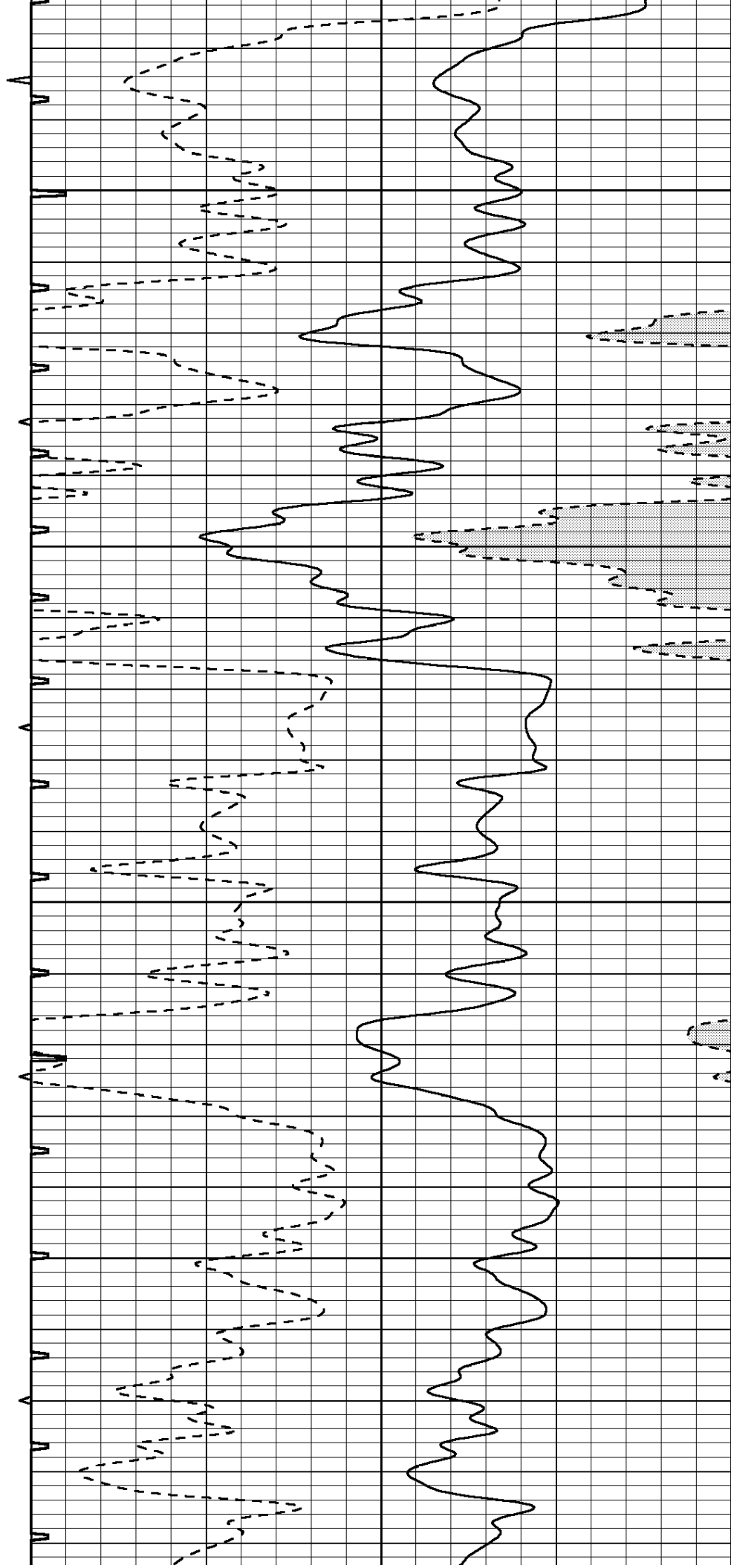


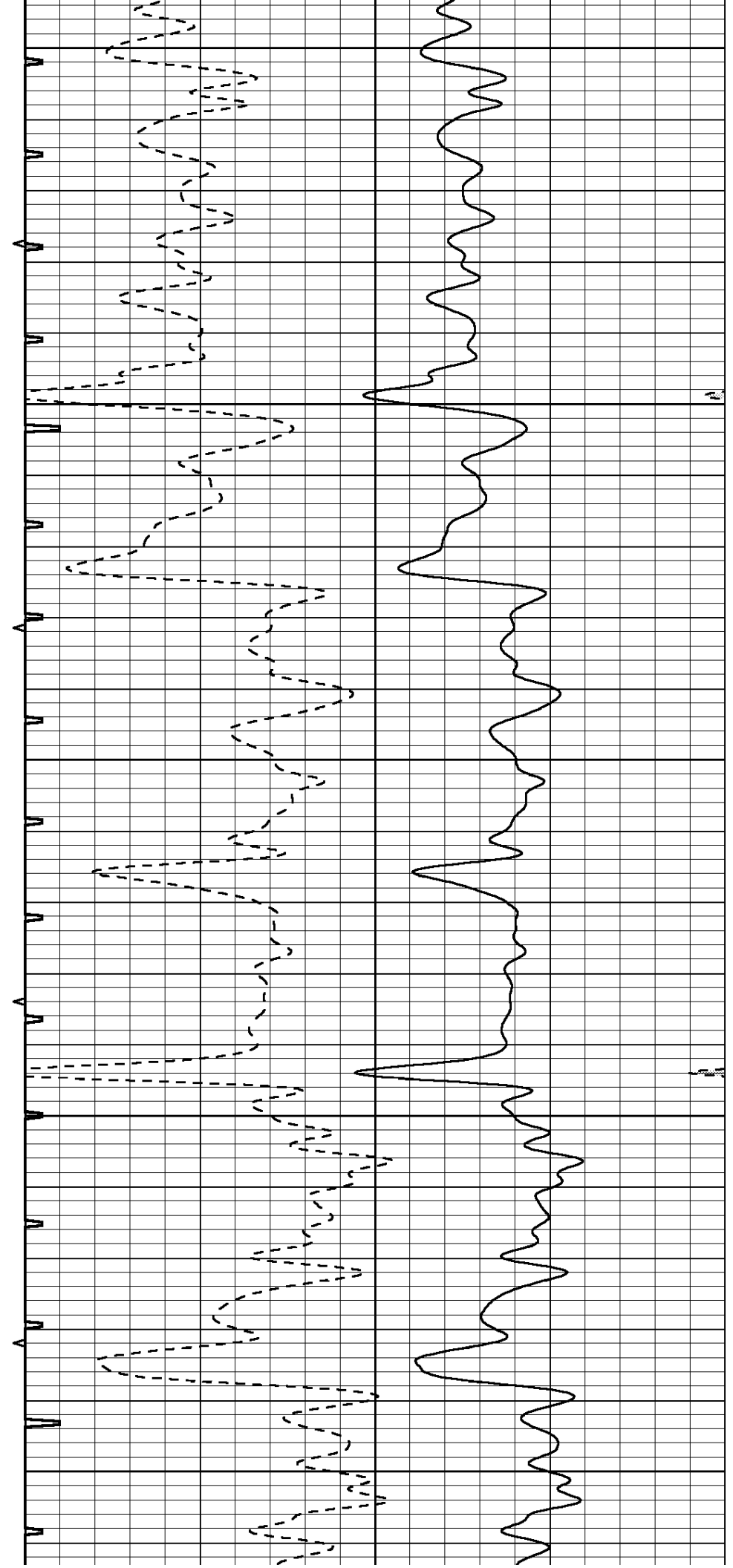
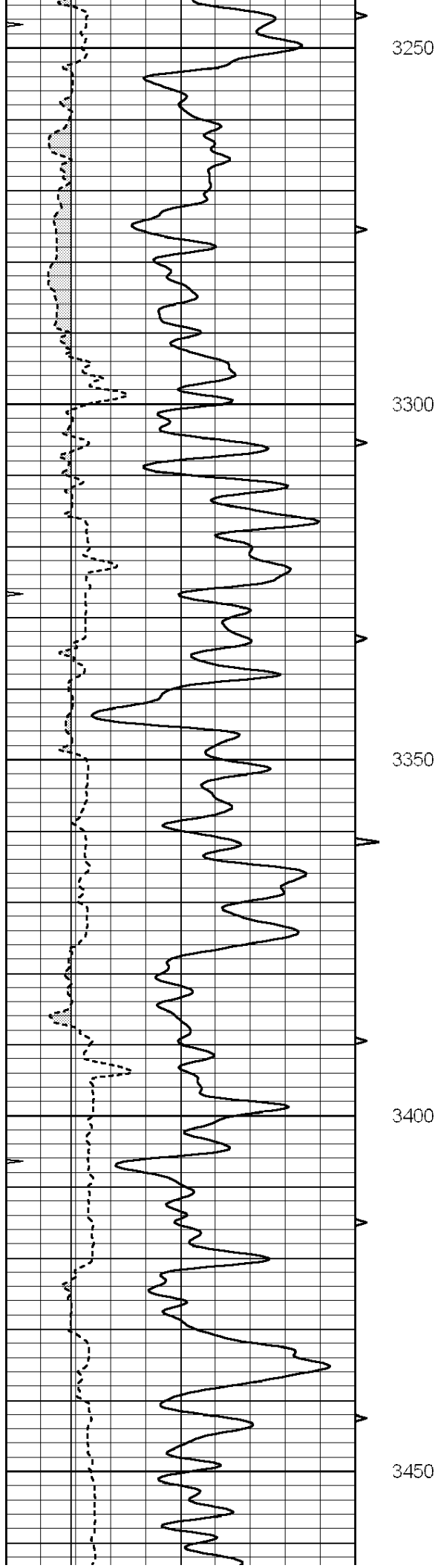
3050

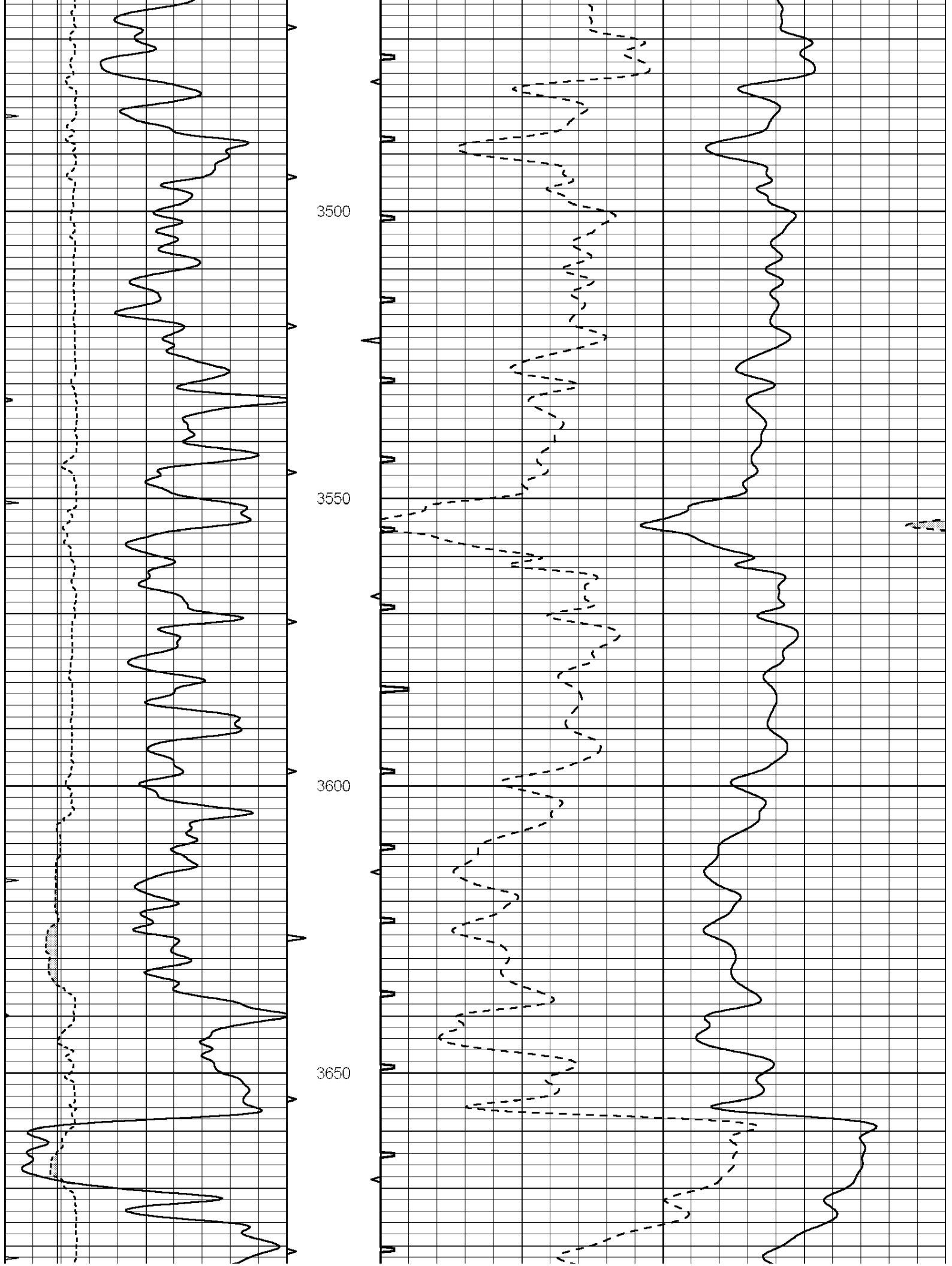
3100

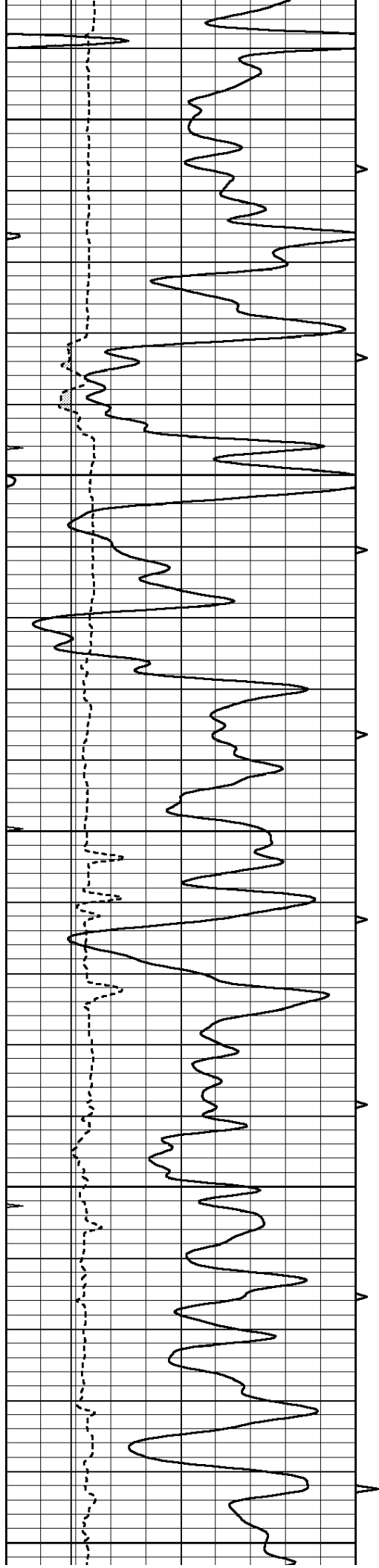
3150

3200









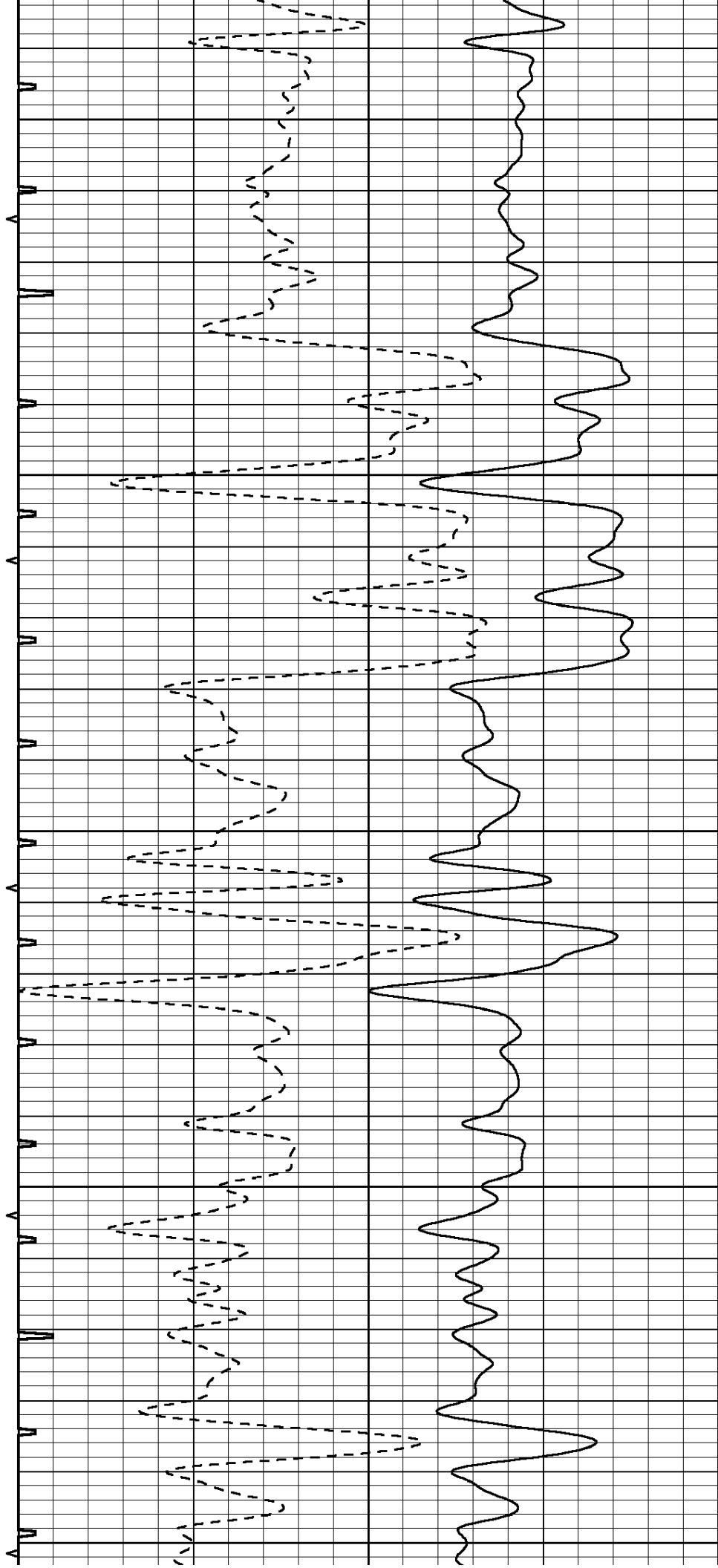
3700

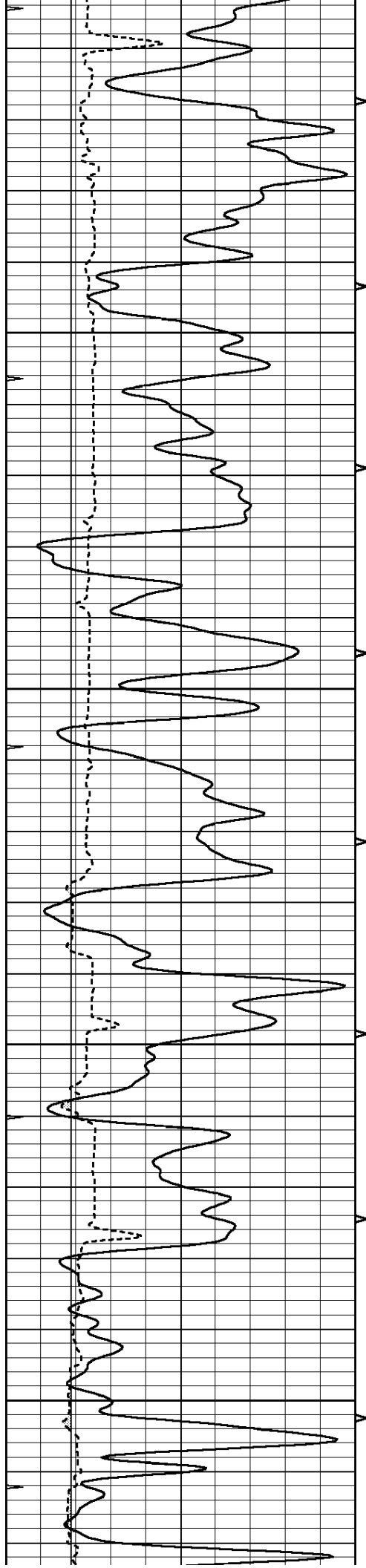
3750

3800

3850

3900



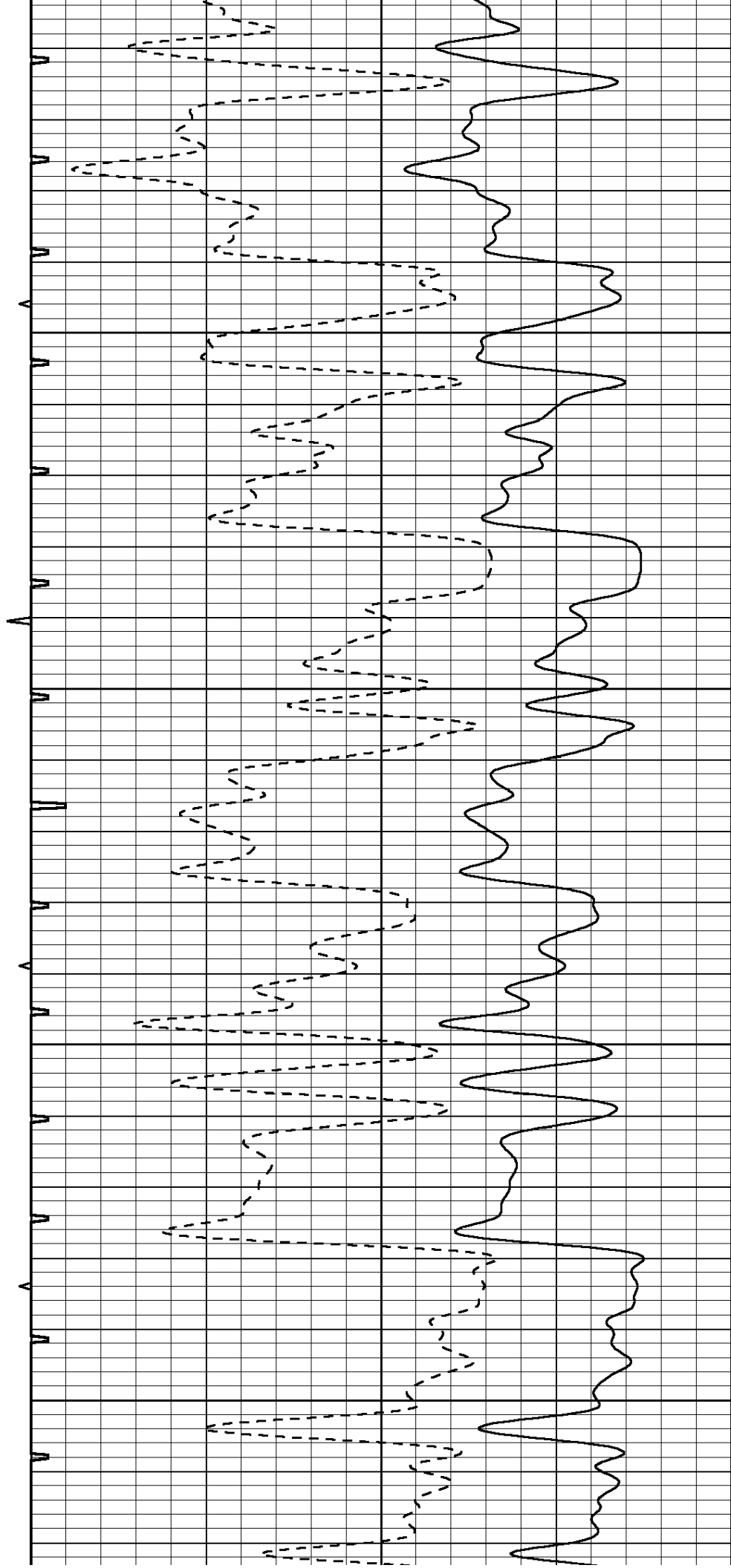


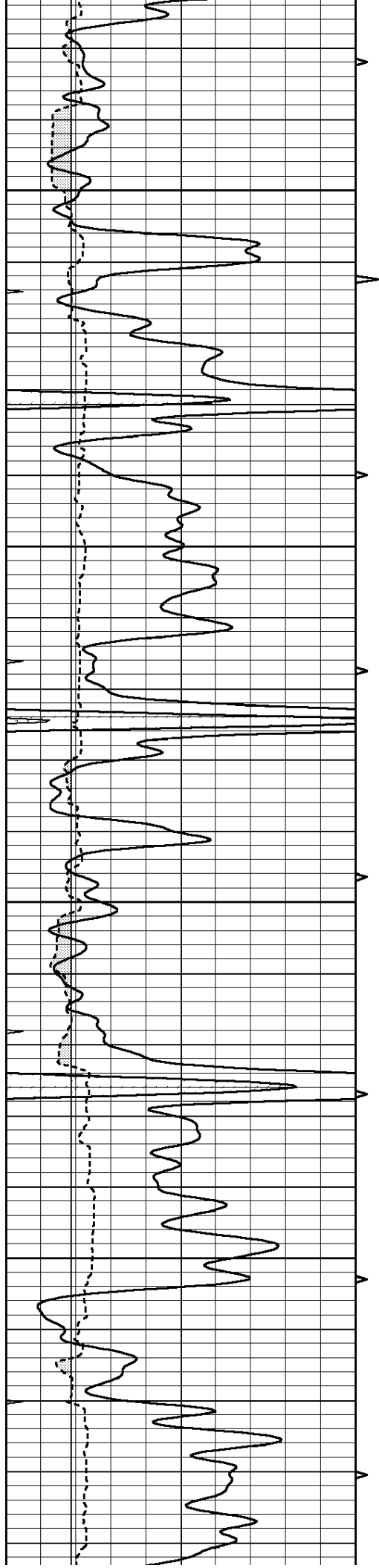
3950

4000

4050

4100



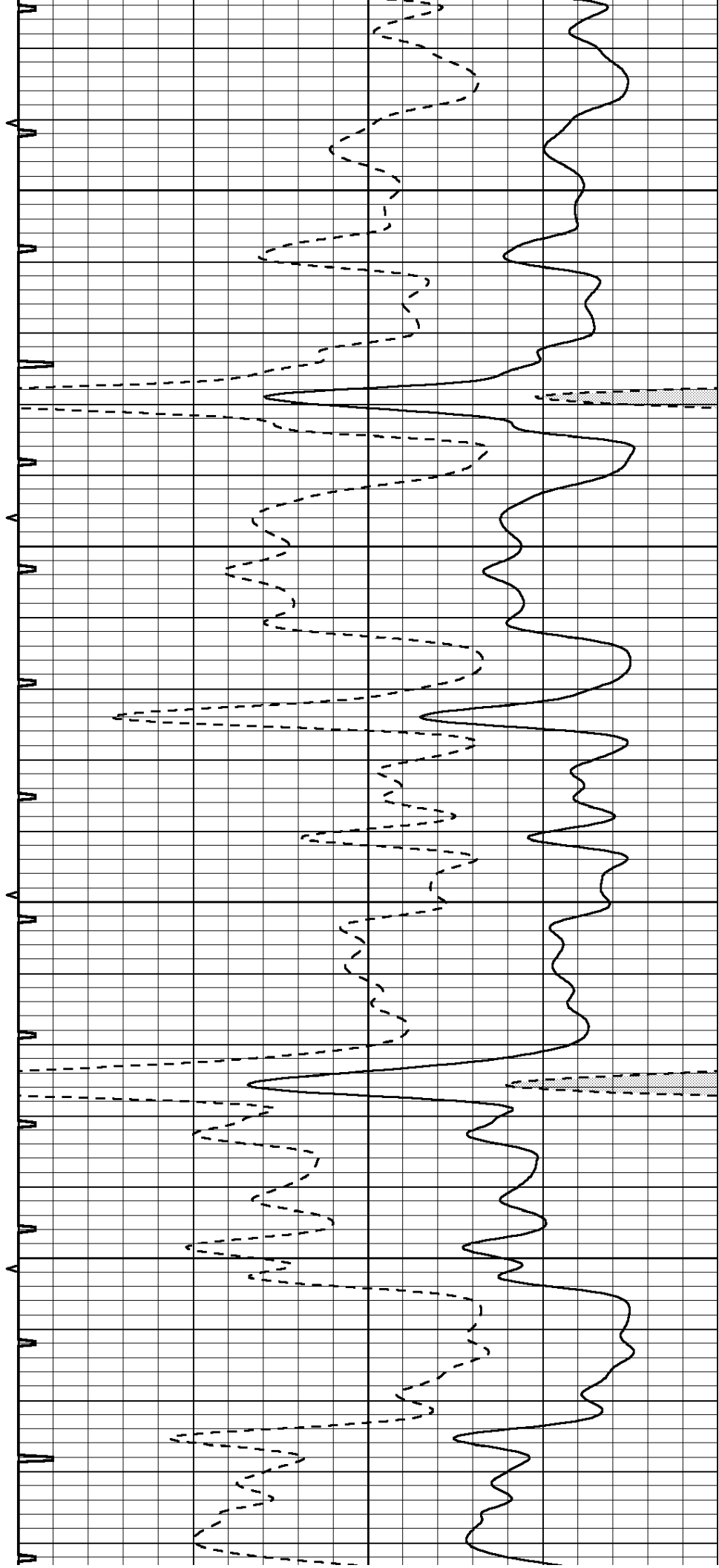


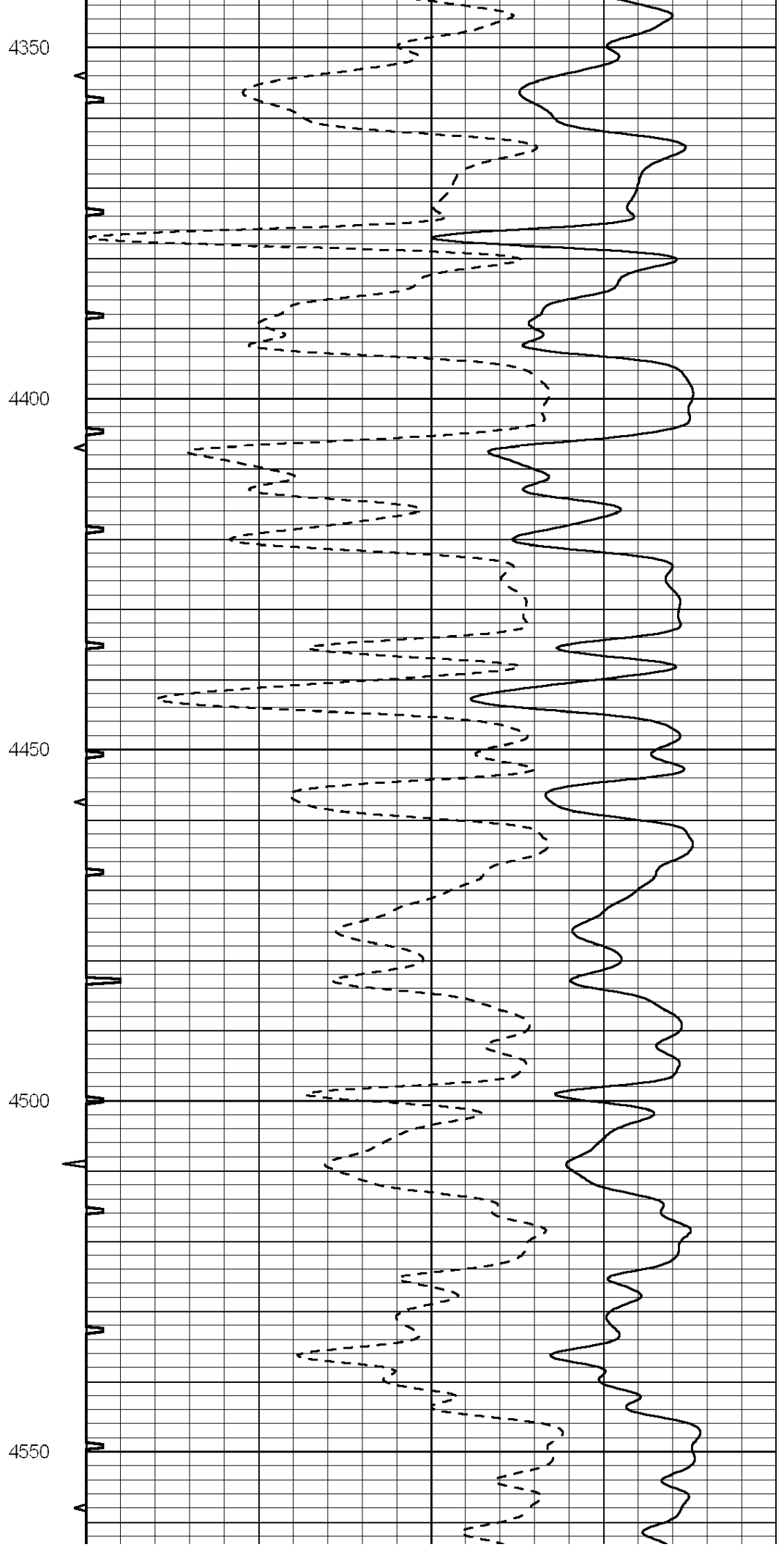
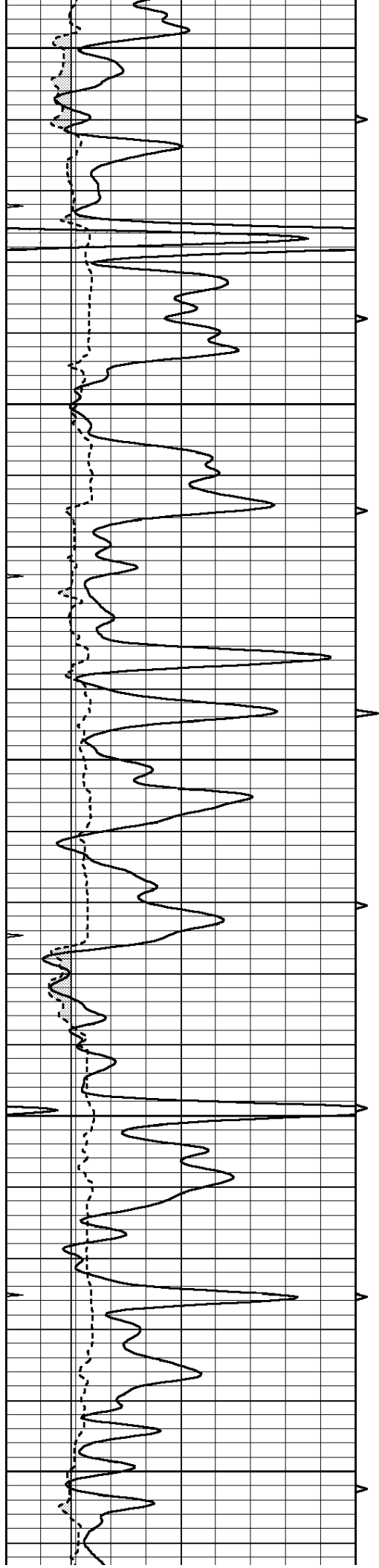
4150

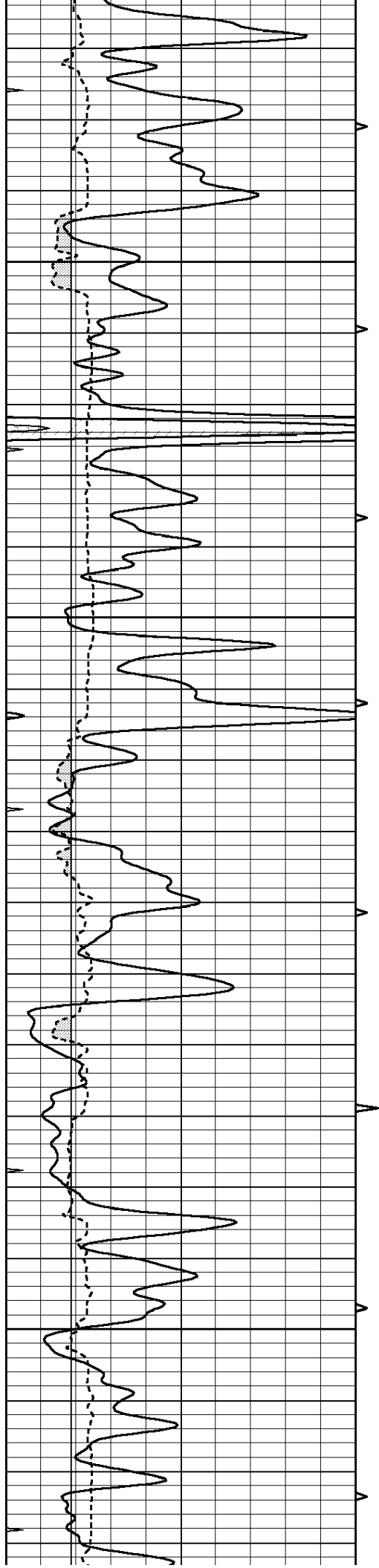
4200

4250

4300





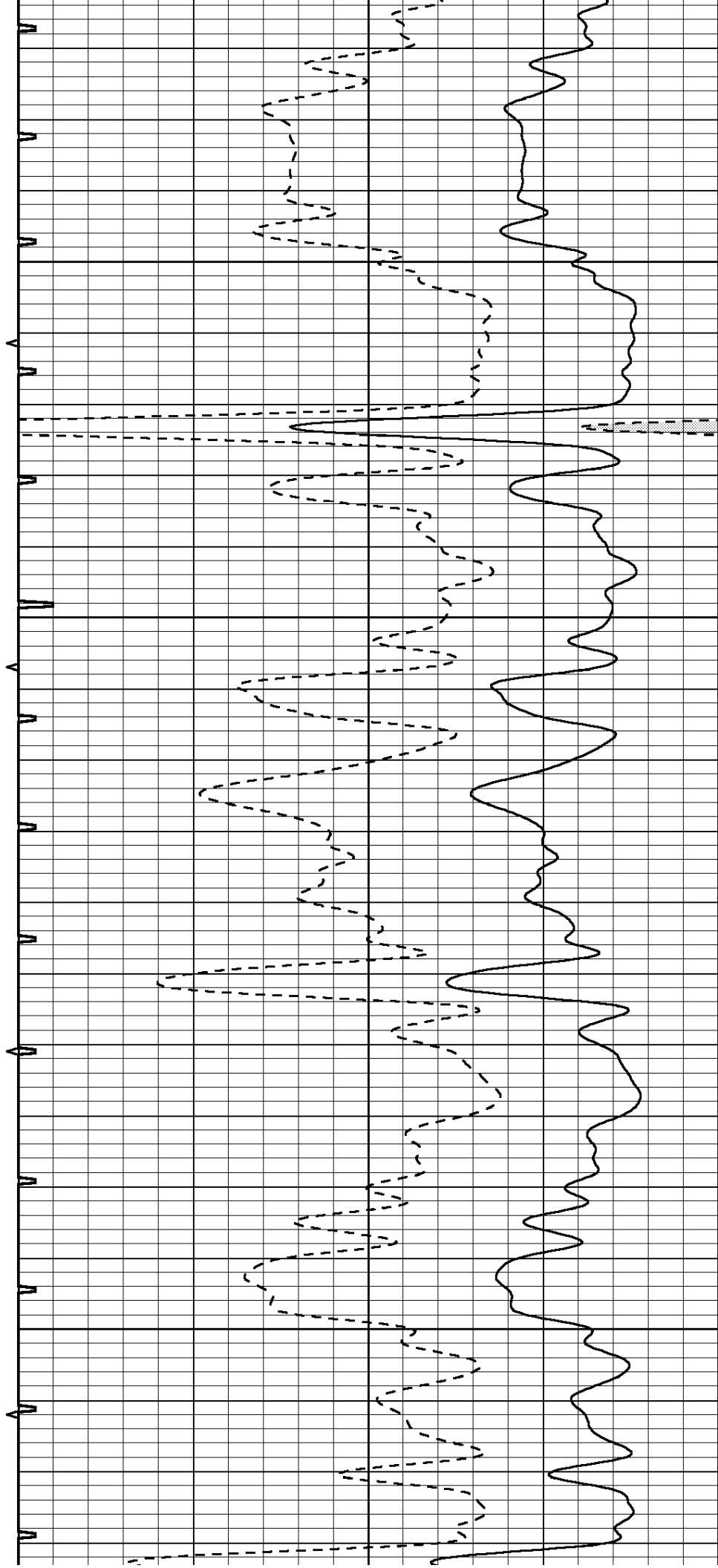


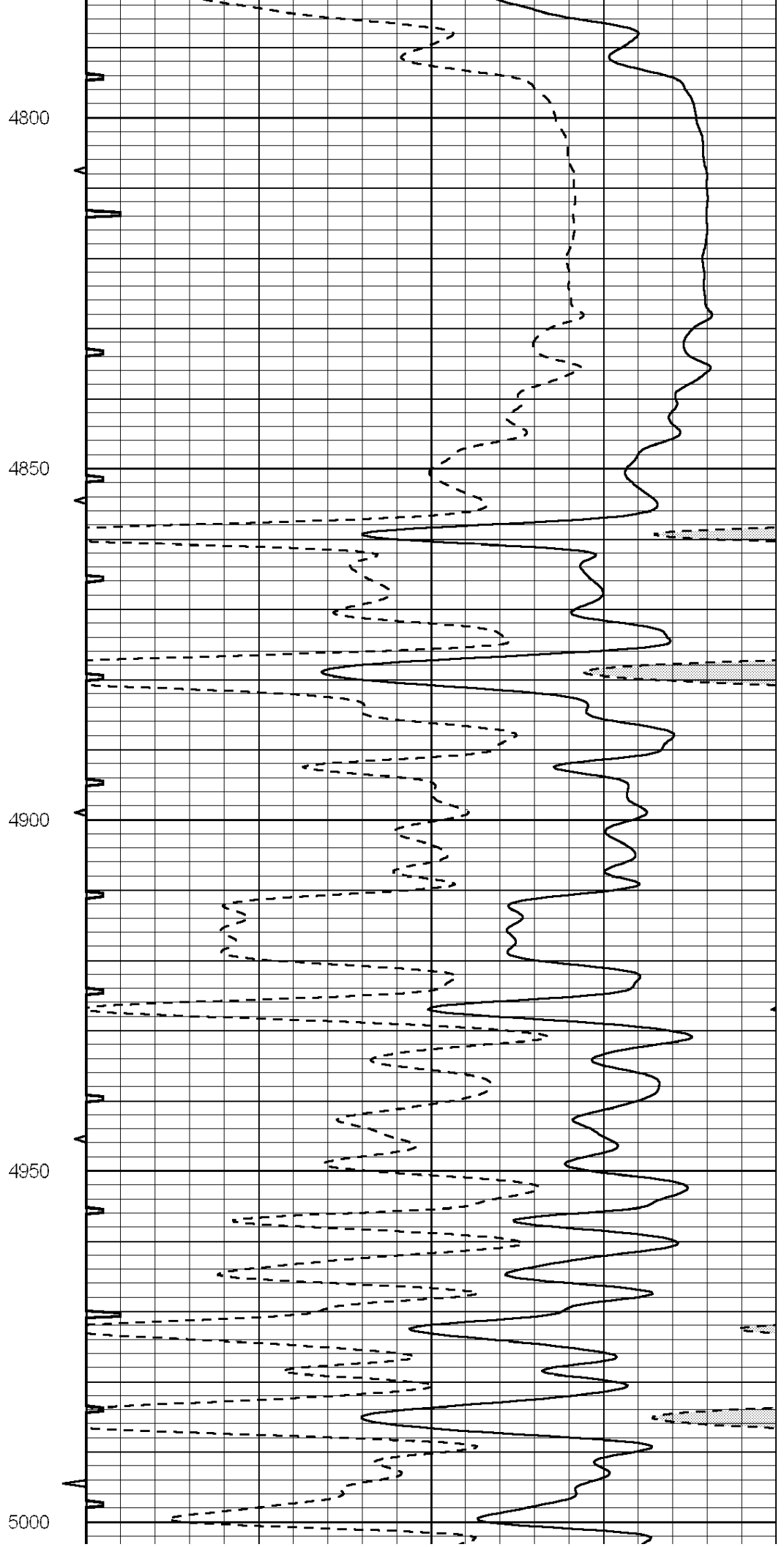
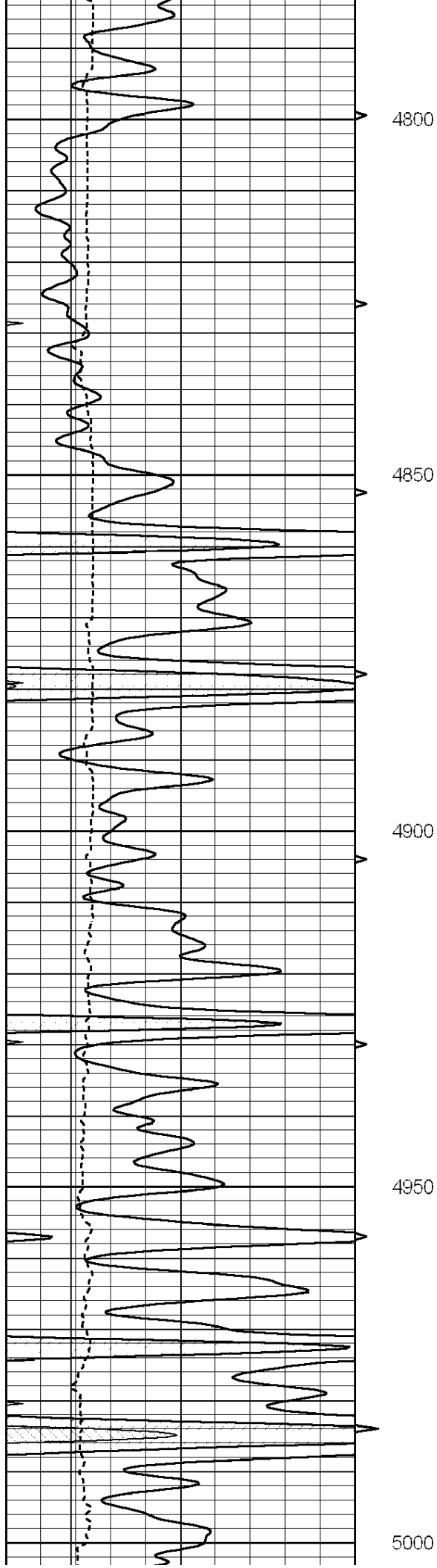
4600

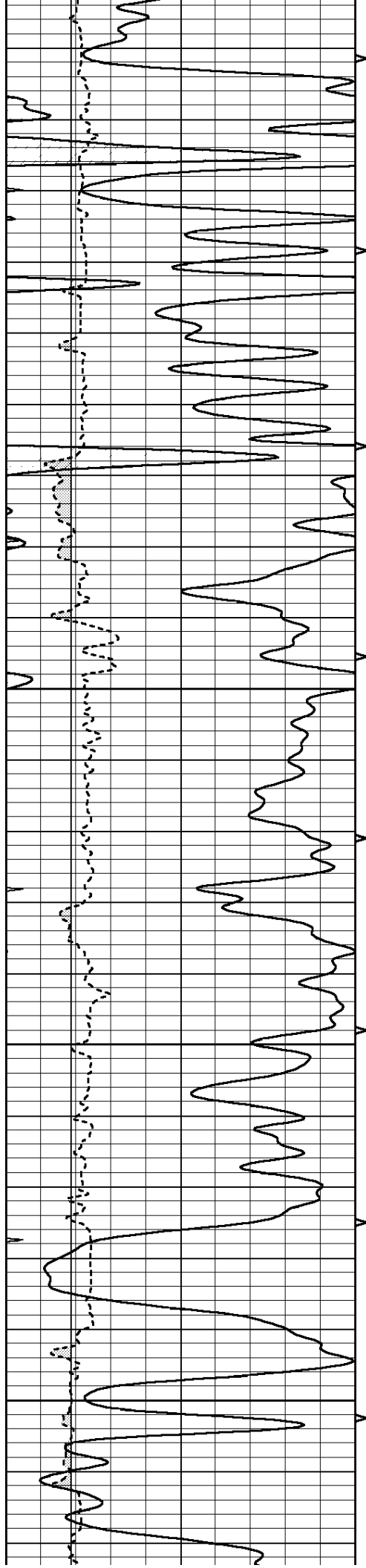
4650

4700

4750





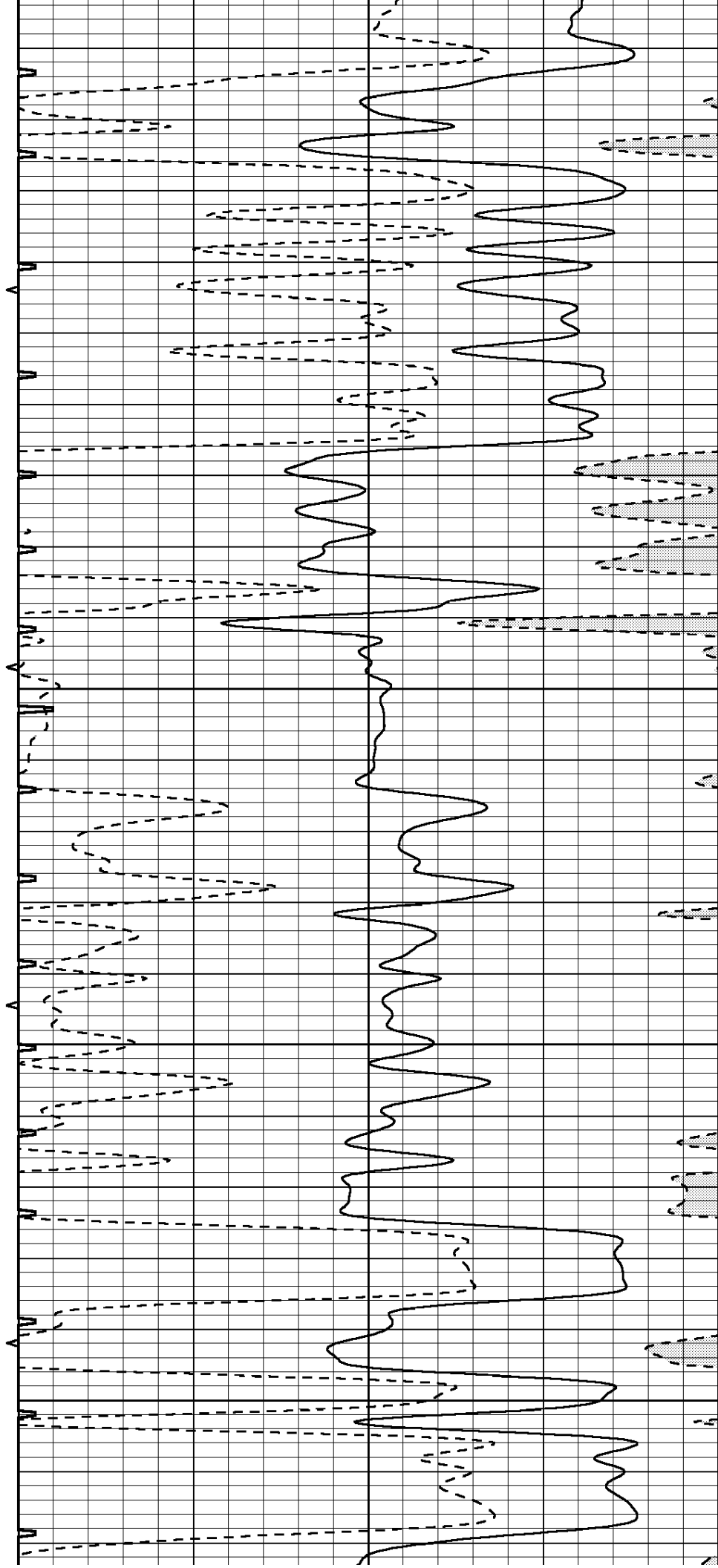


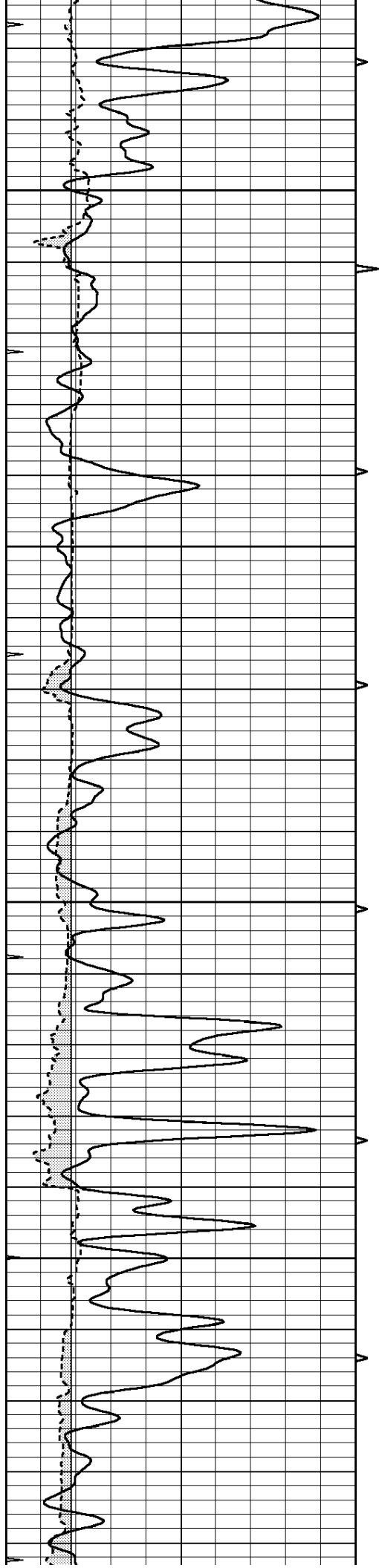
5050

5100

5150

5200



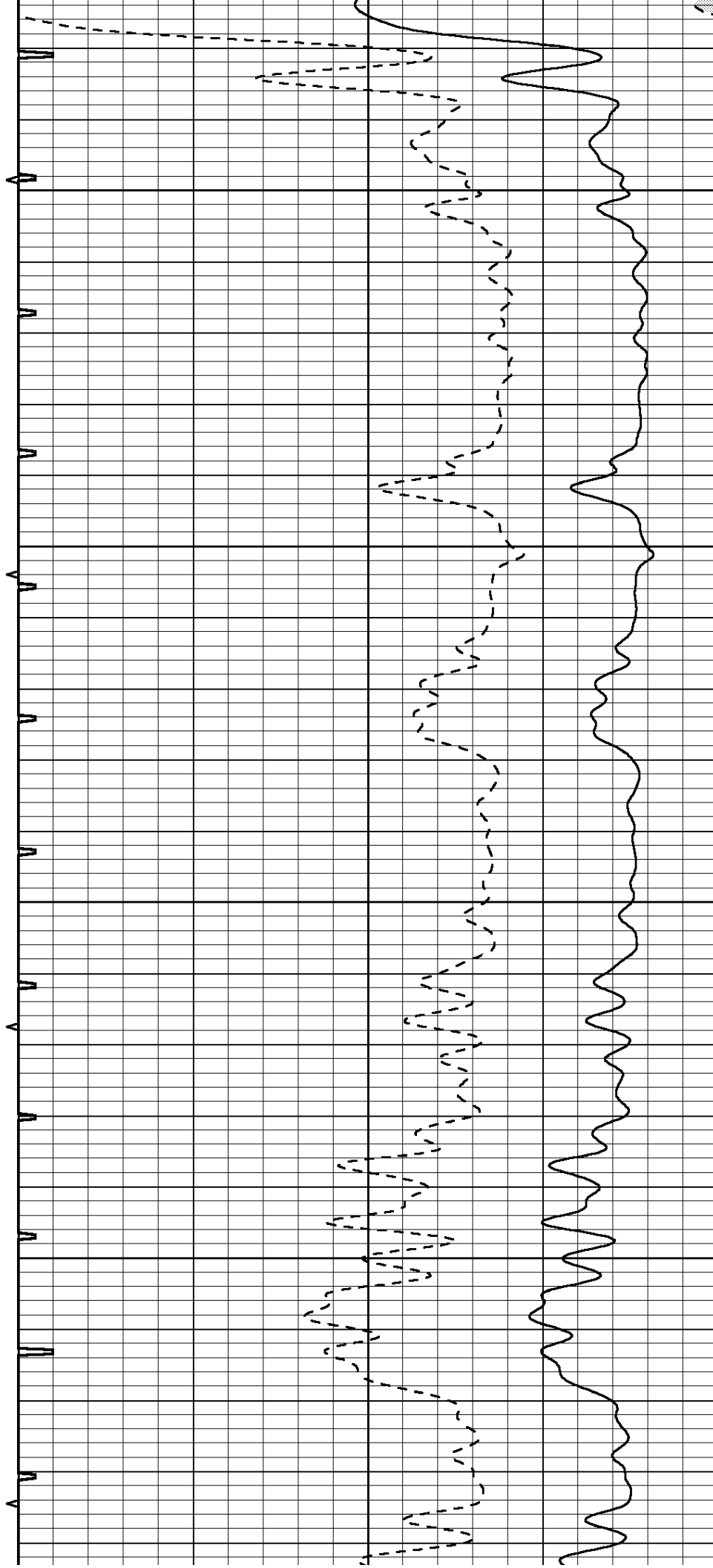


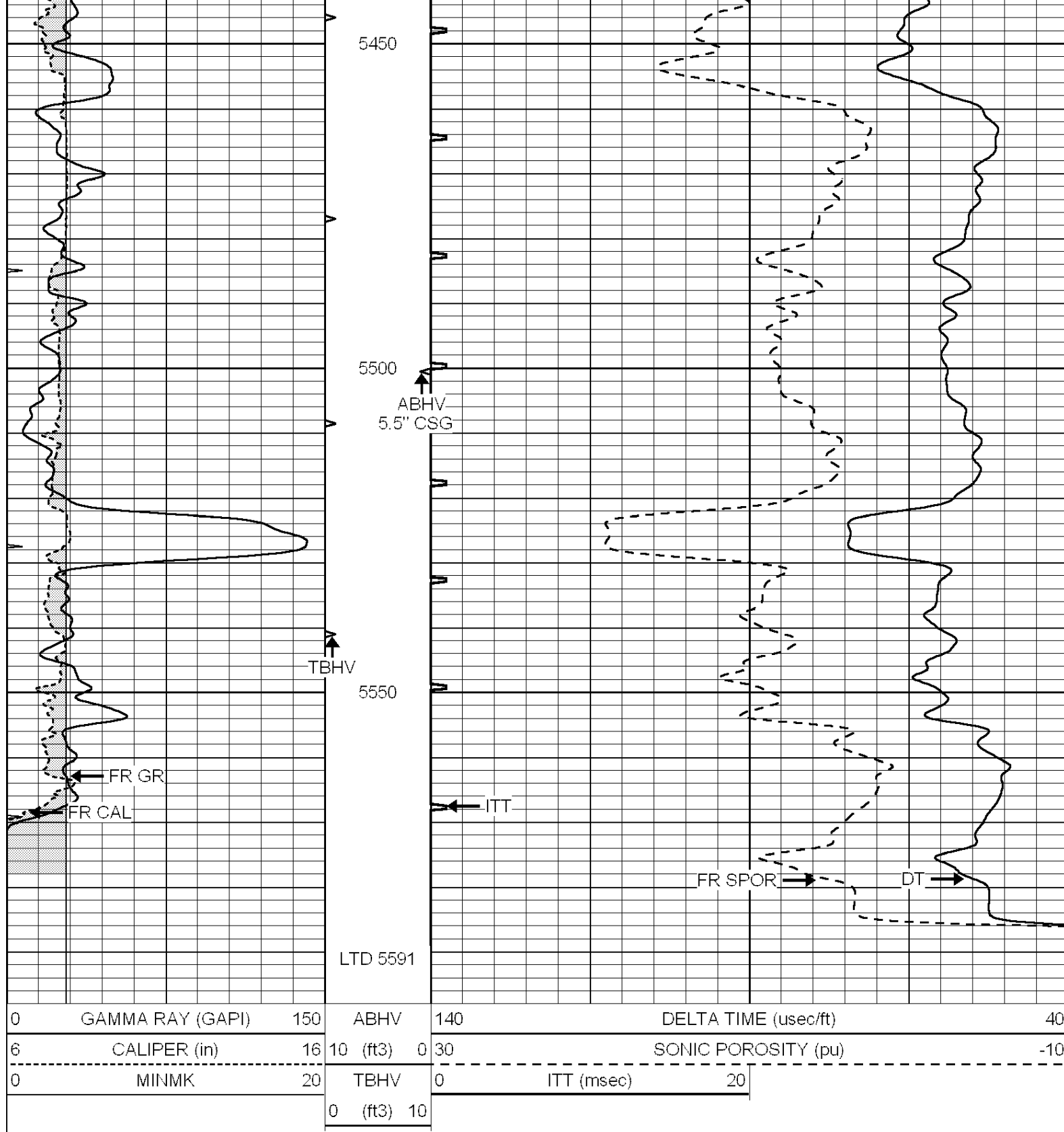
5250

5300

5350

5400





NABORS
COMPLETION
& PRODUCTION
SERVICES CO.

REPEAT SECTION

Database File: 011691pe.db
Dataset Pathname: pass6.1
Presentation Format: slt
Dataset Creation: Sat Oct 19 20:33:27 2013 by Calc SOC 120430
Charted by: Depth in Feet scaled 1:240

0	GAMMA RAY (GAPI)	150	ABHV	140	DELTA TIME (usec/ft)		40
6	CALIPER (in)	16	10 (ft3)	0	30	SONIC POROSITY (pu)	
-----			-----				
0	MINMK	20	TBHV	0	ITT (msec)	20	
			0 (ft3)	10			

