

Rohn State LD09-66HN

TVD
2":100'

Company: Noble Energy Inc
Well Name: Rohn State LD09-66HN
UWI or LSD: 05-123-37539
Rig Id: H&P 273
State: Colorado
County/Parish: Weld
Country: USA
Survey Company: Ensign Directional
Job number: 139452
Dir. Driller Days Kody Wood
Dir. Driller Nights Mike David
MWD/LWD Days Brennan Knerr
MWD/LWD Nights Jamey House

Log measurements:
Depth measured from:
Maximum temperature:

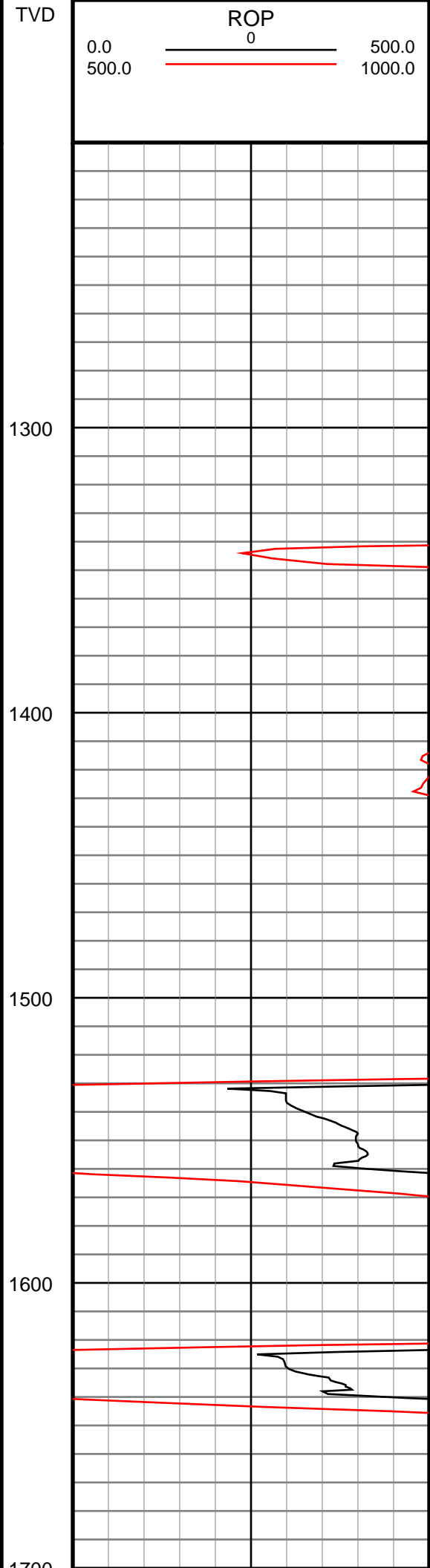
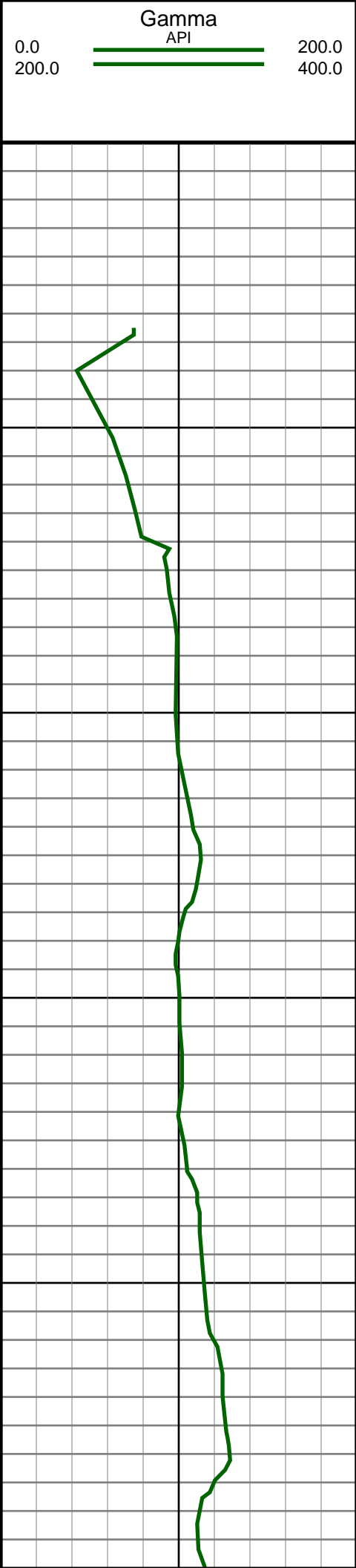
Depth **Date**
Start: 1260 ft 10/20/2013
End: 9670 ft 10/25/2013

Casing Depth Size
Surface: 1249 9.625
Intermediate:

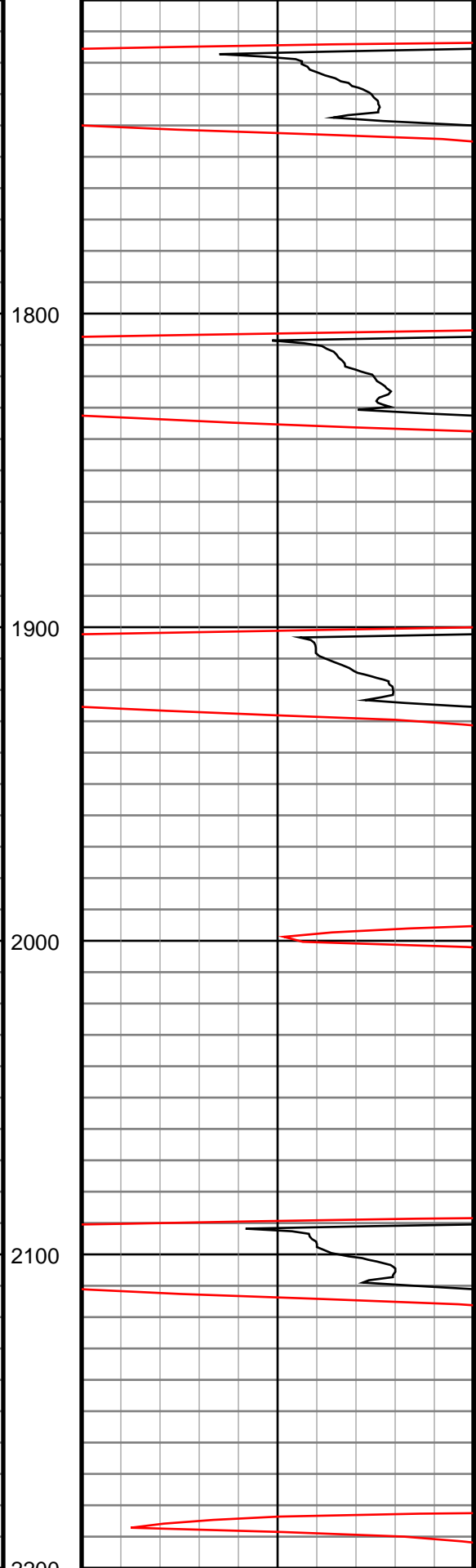
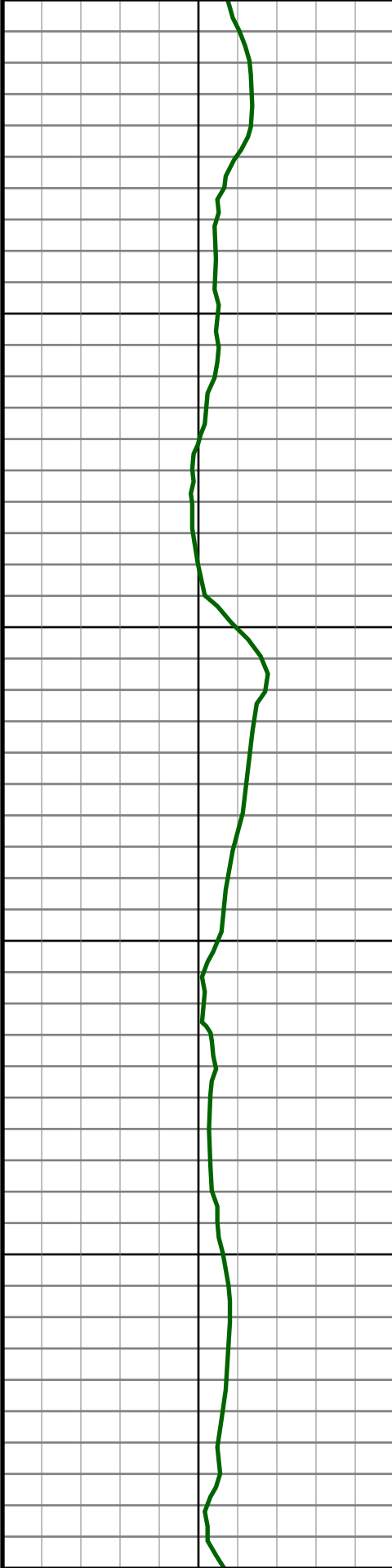
Mud Type:
Density:
Viscosity:
Rm: **Rmf:** **Rmc:**

Elevations
KB: 4736
GL: 4712
DF: 4736

Run	Bit Size	Offsets		Depths		Dates	
		Gamma	Survey	Start	End	Start	End
1	8.75	-1.00	50.00	0	1260	10/20/2013	10/20/2013
2	8.75	61.45	56.45	1260	4981	10/20/2013	10/21/2013
3	8.75	61.88	56.88	4981	6109	10/21/2013	10/22/2013
4	6.125	70.90	65.90	6109	7490	10/23/2013	10/23/2013
5	6.125	71.35	66.35	7490	9670	10/24/2013	10/25/2013
6							
7							
8							
9							
10							



#4 MD(1282.00) Inc(1.4) Azm(20.4) TVD(1281.97) VS(-4.59) NS(2.45) EW(4.40)
#5 MD(1375.00) Inc(0.9) Azm(31.6) TVD(1374.95) VS(-5.50) NS(4.14) EW(5.18)
#6 MD(1467.00) Inc(0.8) Azm(18.3) TVD(1466.94) VS(-6.18) NS(5.37) EW(5.76)
#7 MD(1558.00) Inc(2.3) Azm(141.5) TVD(1557.92) VS(-7.44) NS(4.54) EW(7.10)
#8 MD(1651.00) Inc(3.1) Azm(157.0) TVD(1650.82) VS(-9.28) NS(0.76) EW(9.24)



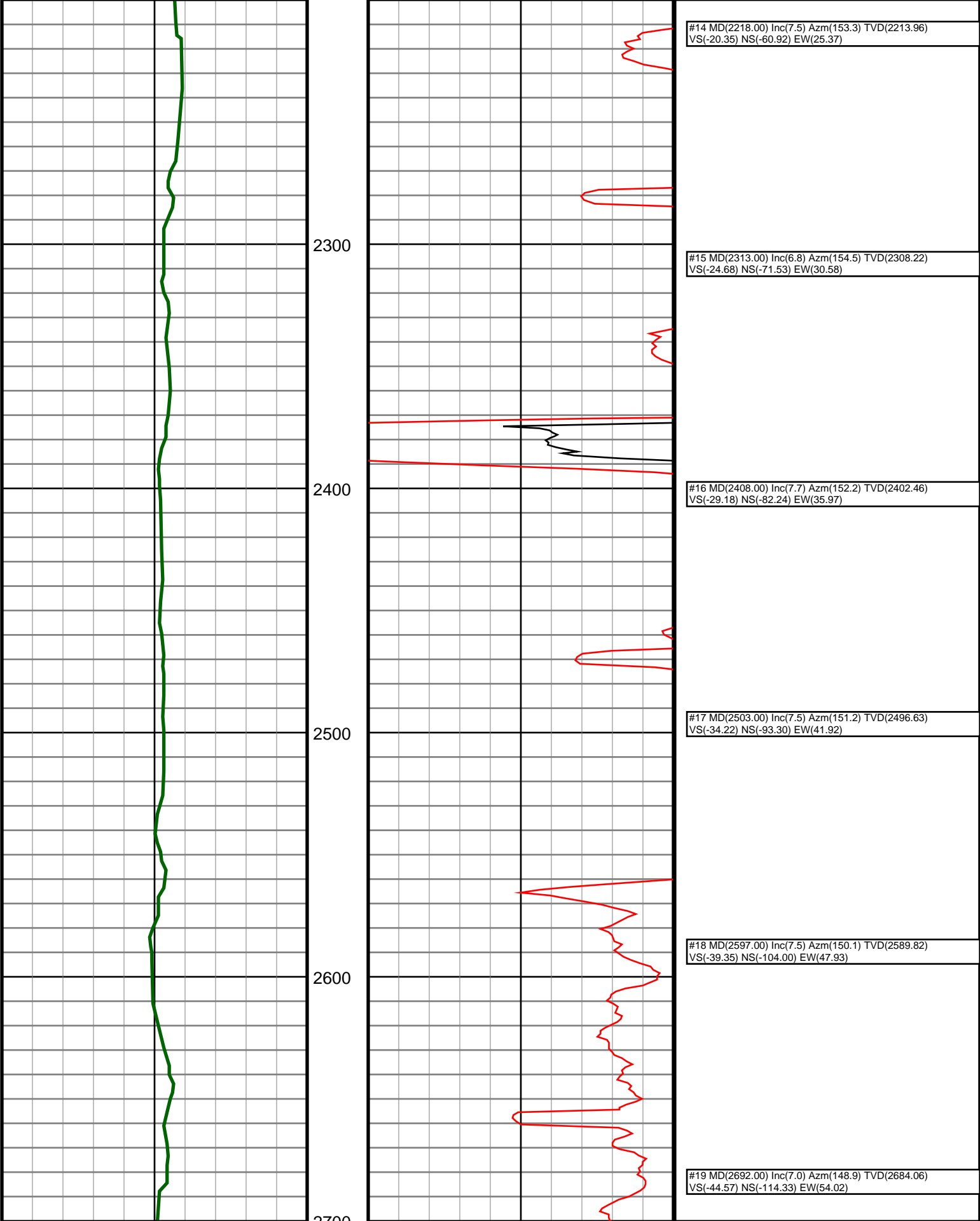
#9 MD(1744.00) Inc(4.5) Azm(163.6) TVD(1743.61)
VS(-10.81) NS(-5.05) EW(11.26)

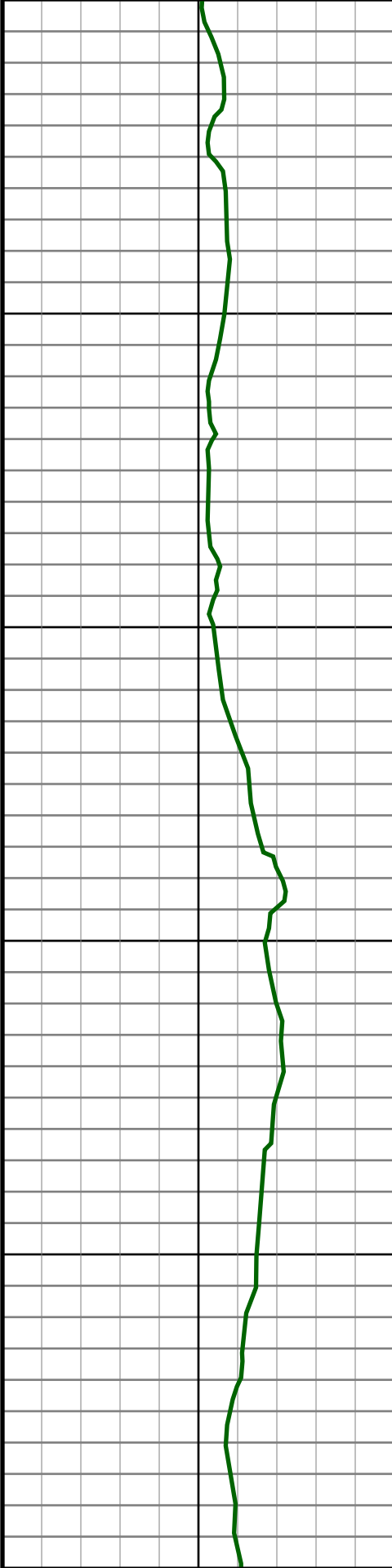
#10 MD(1839.00) Inc(6.1) Azm(177.5) TVD(1838.21)
VS(-11.38) NS(-13.67) EW(12.53)

#11 MD(1933.00) Inc(7.6) Azm(170.5) TVD(1931.53)
VS(-11.72) NS(-24.79) EW(13.77)

#12 MD(2028.00) Inc(7.6) Azm(169.4) TVD(2025.70)
VS(-12.90) NS(-37.16) EW(15.97)

#13 MD(2123.00) Inc(8.0) Azm(155.6) TVD(2119.83)
VS(-15.79) NS(-49.36) EW(19.85)





2800

2900

3000

3100

3200



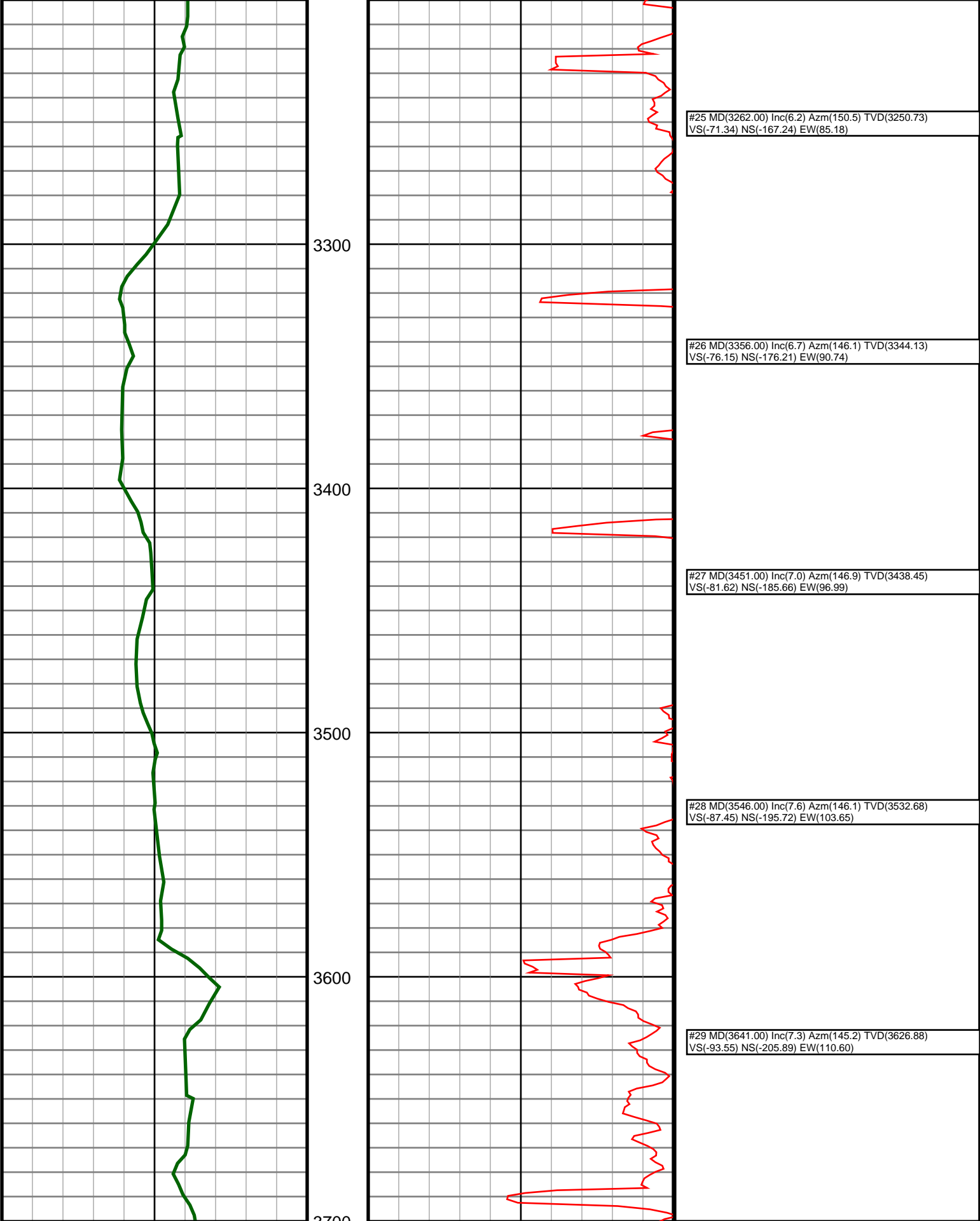
#20 MD(2787.00) Inc(6.5) Azm(147.1) TVD(2778.40)
VS(-49.69) NS(-123.80) EW(59.93)

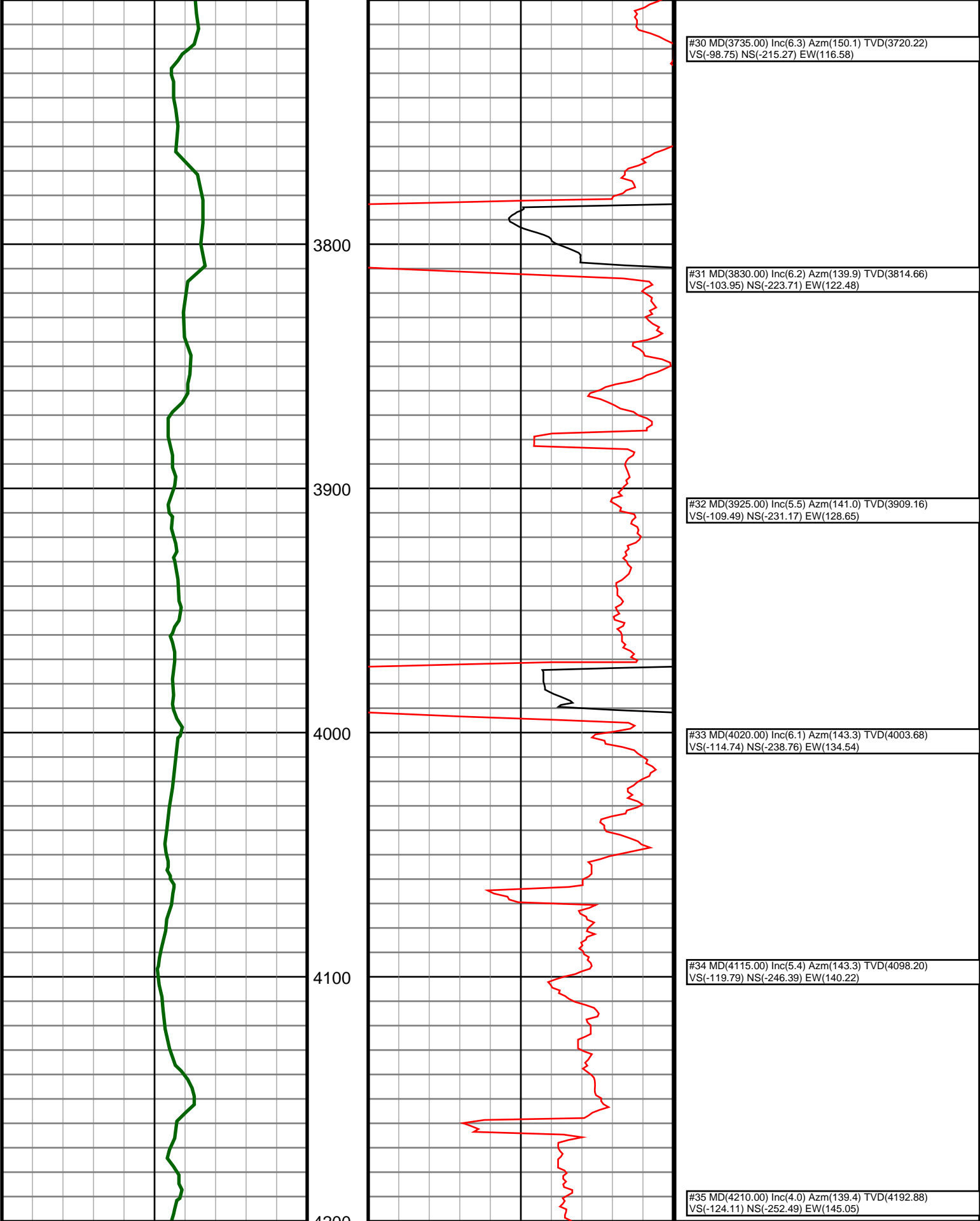
#21 MD(2882.00) Inc(5.6) Azm(148.7) TVD(2872.87)
VS(-54.32) NS(-132.27) EW(65.25)

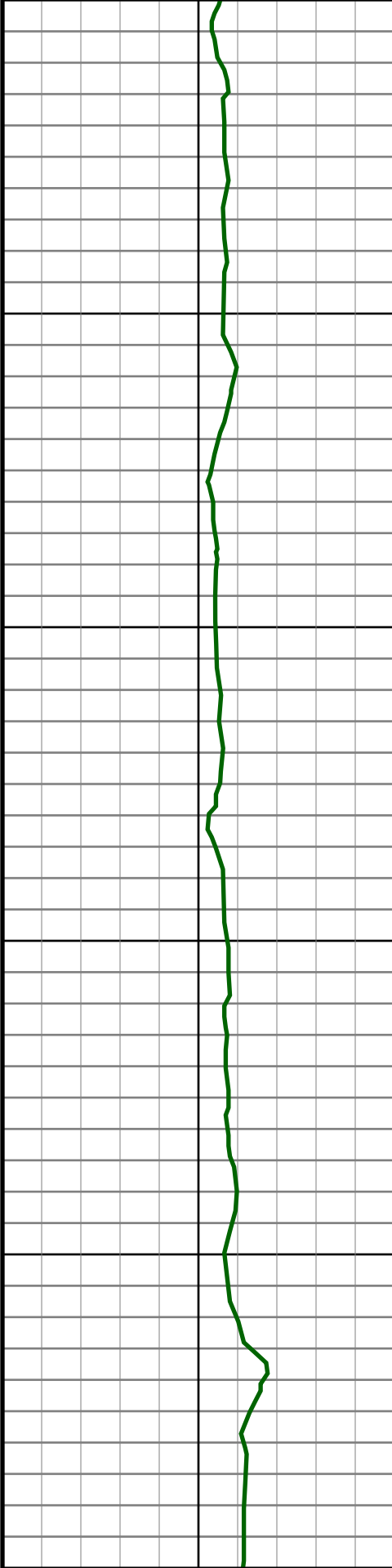
#22 MD(2977.00) Inc(6.1) Azm(143.1) TVD(2967.38)
VS(-59.09) NS(-140.27) EW(70.69)

#23 MD(3072.00) Inc(6.2) Azm(155.7) TVD(3061.84)
VS(-63.51) NS(-148.98) EW(75.84)

#24 MD(3167.00) Inc(6.2) Azm(152.7) TVD(3156.28)
VS(-67.21) NS(-158.22) EW(80.30)







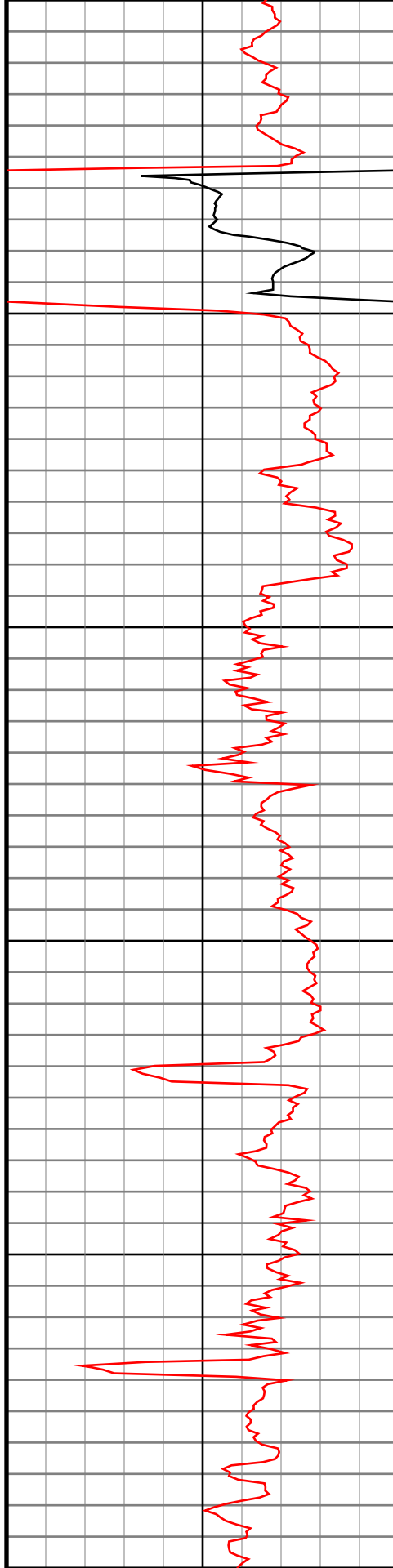
4300

4400

4500

4600

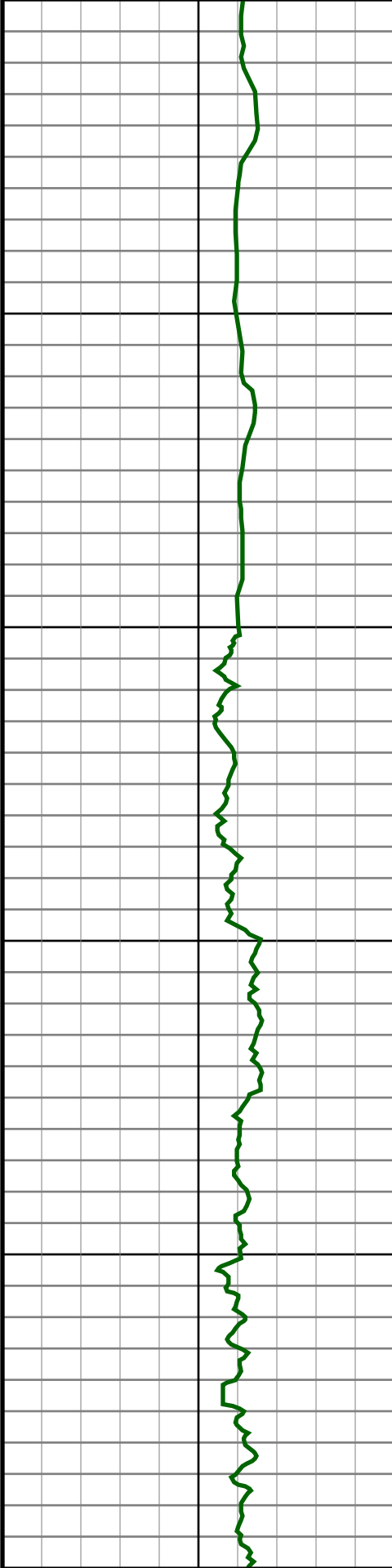
4700



#36 MD(4304.00) Inc(1.1) Azm(147.5) TVD(4286.77)
VS(-126.45) NS(-255.74) EW(147.67)

#37 MD(4494.00) Inc(0.9) Azm(14.9) TVD(4476.76)
VS(-127.80) NS(-255.84) EW(149.03)

#38 MD(4684.00) Inc(0.7) Azm(43.9) TVD(4666.74)
VS(-129.17) NS(-253.56) EW(150.22)



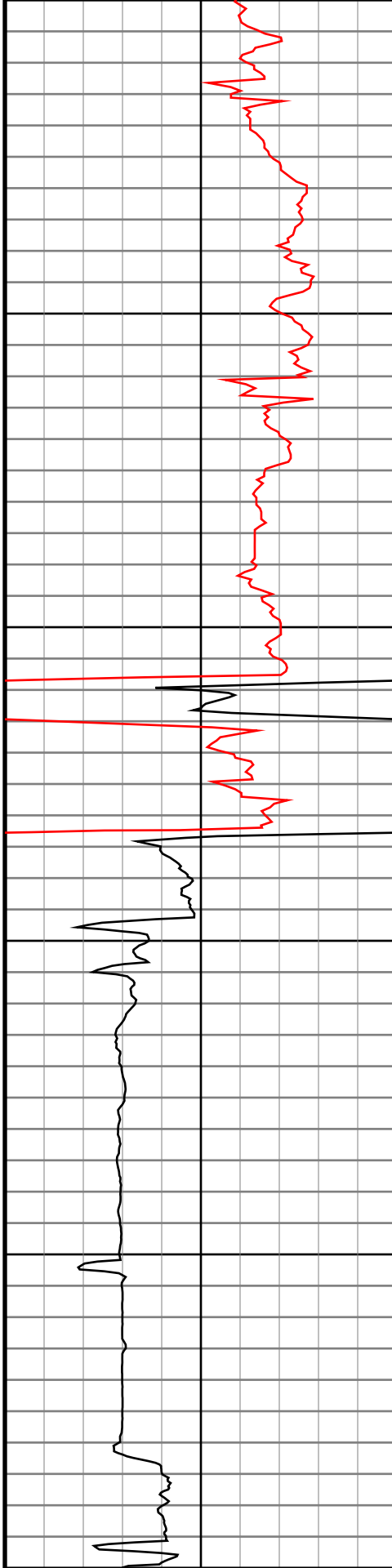
4800

4900

5000

5100

5200

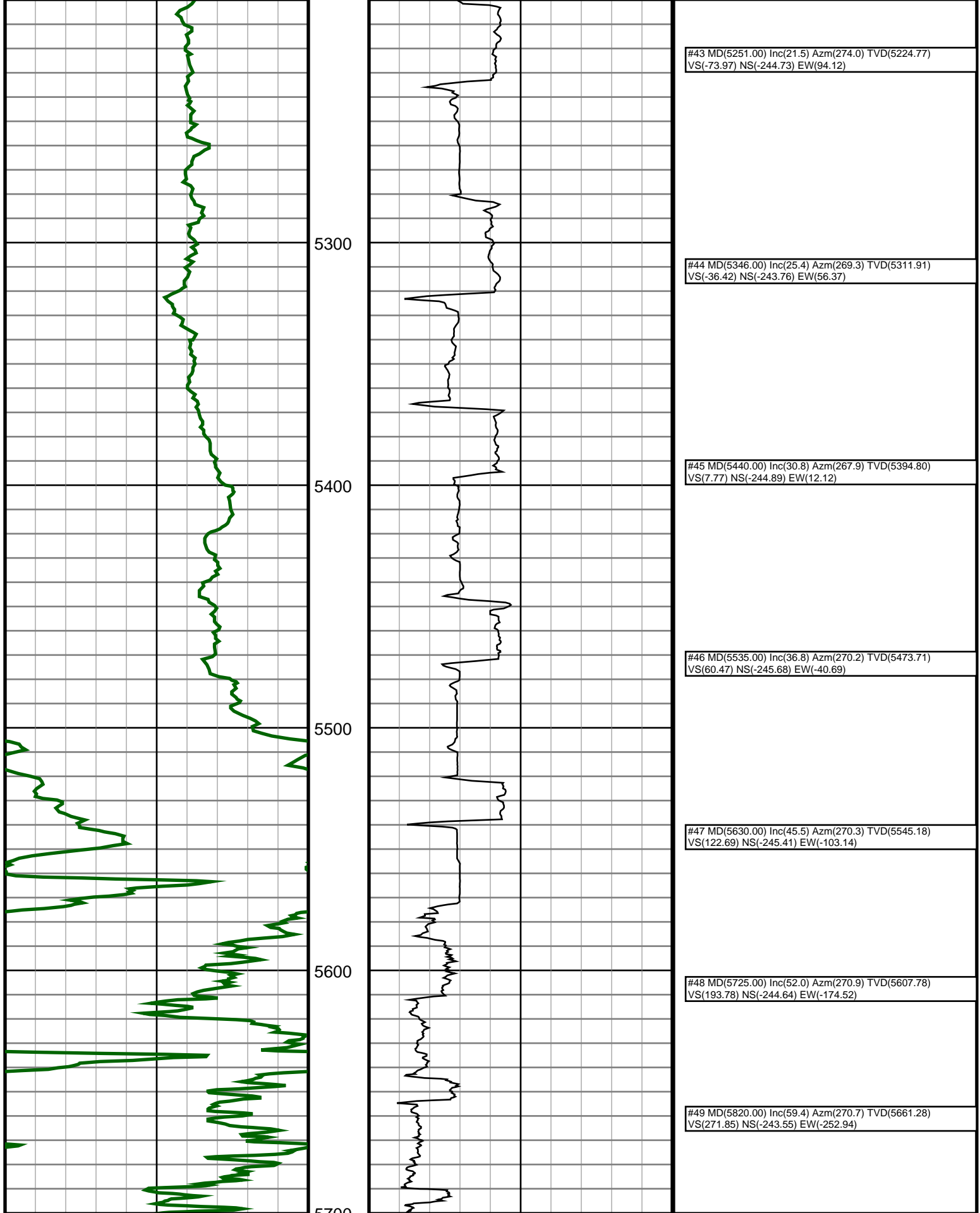


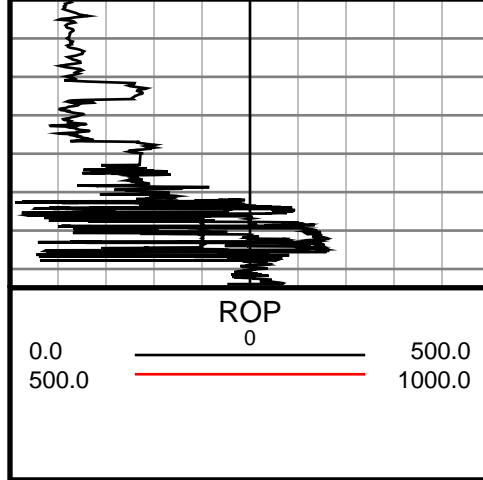
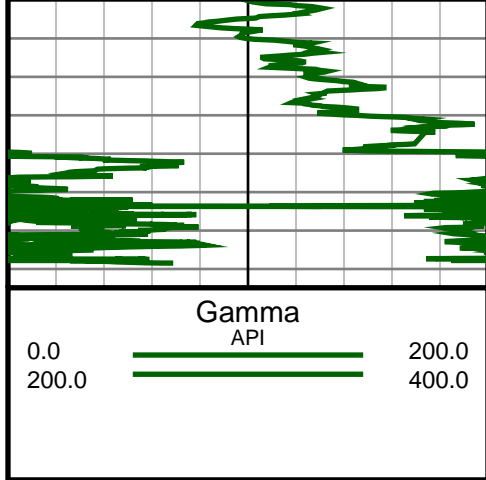
#39 MD(4873.00) Inc(1.1) Azm(30.6) TVD(4855.72)
VS(-131.09) NS(-251.17) EW(151.95)

#40 MD(4966.00) Inc(1.5) Azm(39.0) TVD(4948.69)
VS(-132.44) NS(-249.45) EW(153.17)

#41 MD(5061.00) Inc(6.2) Azm(271.0) TVD(5043.53)
VS(-128.19) NS(-248.40) EW(148.82)

#42 MD(5156.00) Inc(19.8) Azm(274.2) TVD(5135.87)
VS(-107.09) NS(-247.12) EW(127.54)





#50 MD(5914.00) Inc(68.8) Azm(270.0) TVD(5702.30) VS(355.99) NS(-243.06) EW(-337.40)
#52 MD(6049.00) Inc(84.3) Azm(268.2) TVD(5734.76) VS(486.34) NS(-245.07) EW(-468.01)
#54 MD(6250.00) Inc(86.0) Azm(266.8) TVD(5749.68) VS(686.56) NS(-252.15) EW(-668.32)
9600.0:Bit Projection @9670' INC: 85.6 AZM: 263.1 TVD: 5774.05 VS: 4099.24
#91 MD(9670.00) Inc(85.6) Azm(263.1) TVD(5774.05) VS(4099.24) NS(-358.73) EW(-4083.60)