

Rohn State LD09-66HN

MD
2":100'

Company: Noble Energy Inc
Well Name: Rohn State LD09-66HN
UWI or LSD: 05-123-37539
Rig Id: H&P 273
State: Colorado
County/Parish: Weld
Country: USA
Survey Company: Ensign Directional
Job number: 139452
Dir. Driller Days Kody Wood
Dir. Driller Nights Mike David
MWD/LWD Days Brennan Knerr
MWD/LWD Nights Jamey House

Log measurements:
Depth measured from:
Maximum temperature:

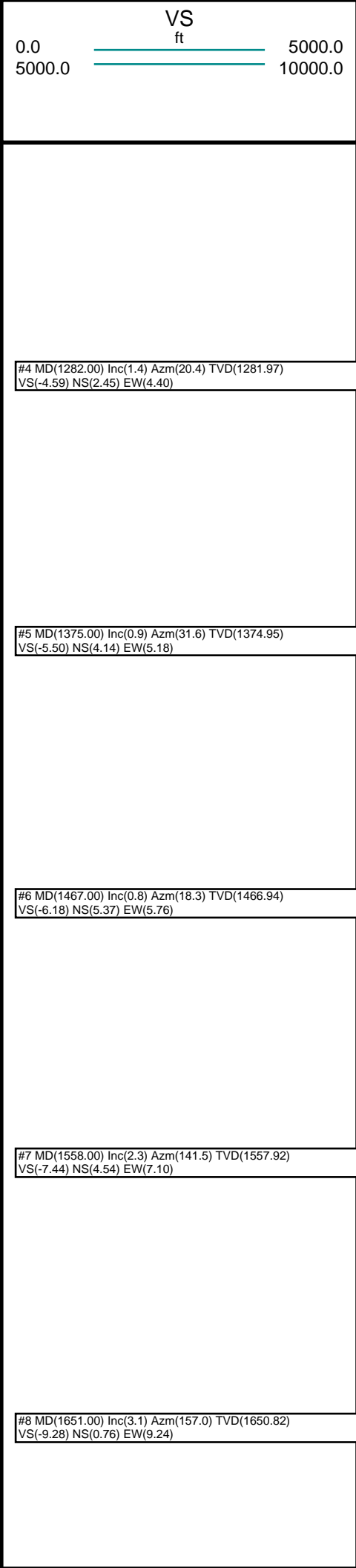
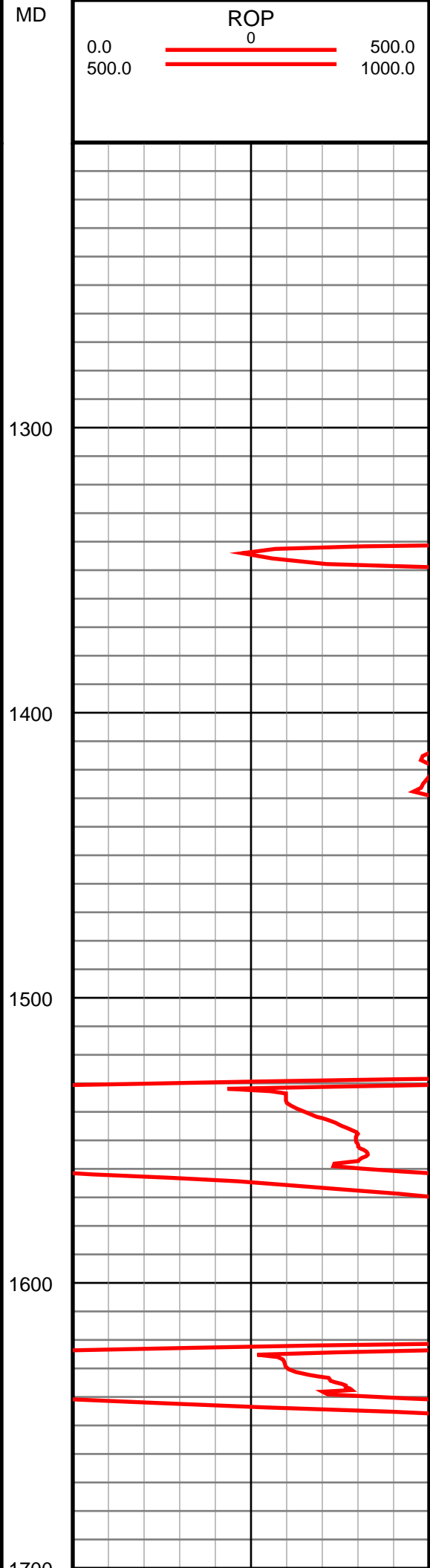
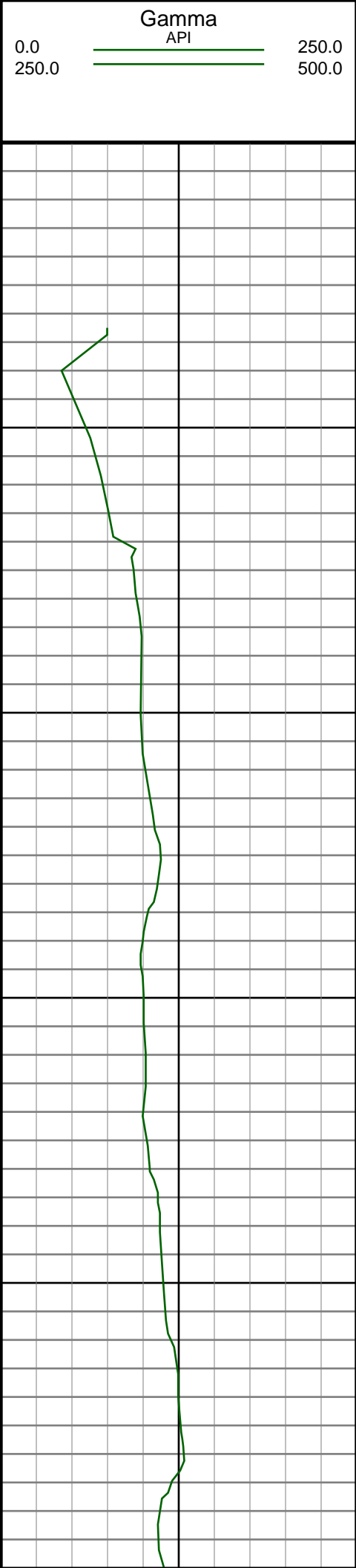
Depth **Date**
Start: 1260 ft 10/20/2013
End: 9670 ft 10/25/2013

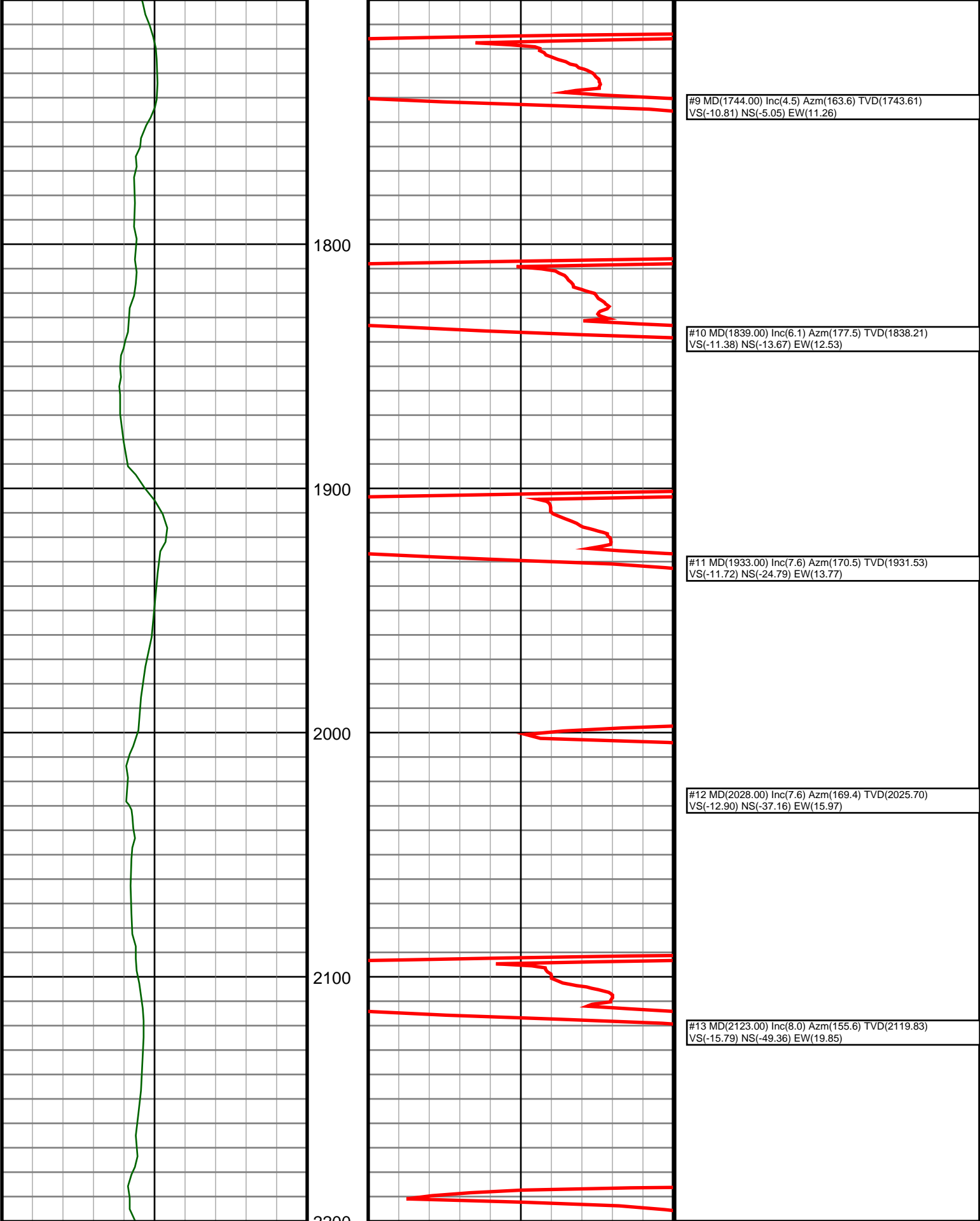
Casing Depth Size
Surface: 1249 9.625
Intermediate:

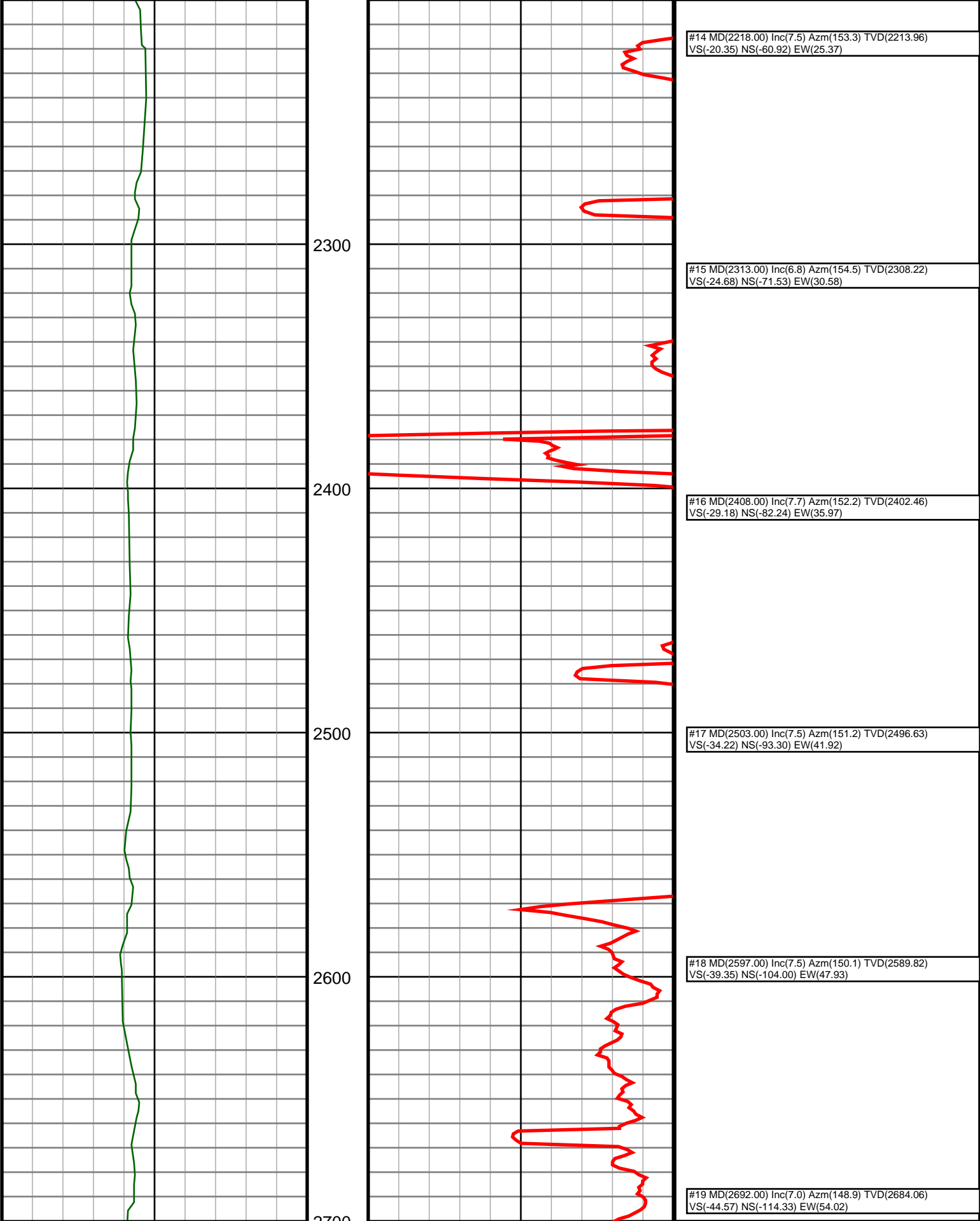
Mud Type:
Density:
Viscosity:
Rm: **Rmf:** **Rmc:**

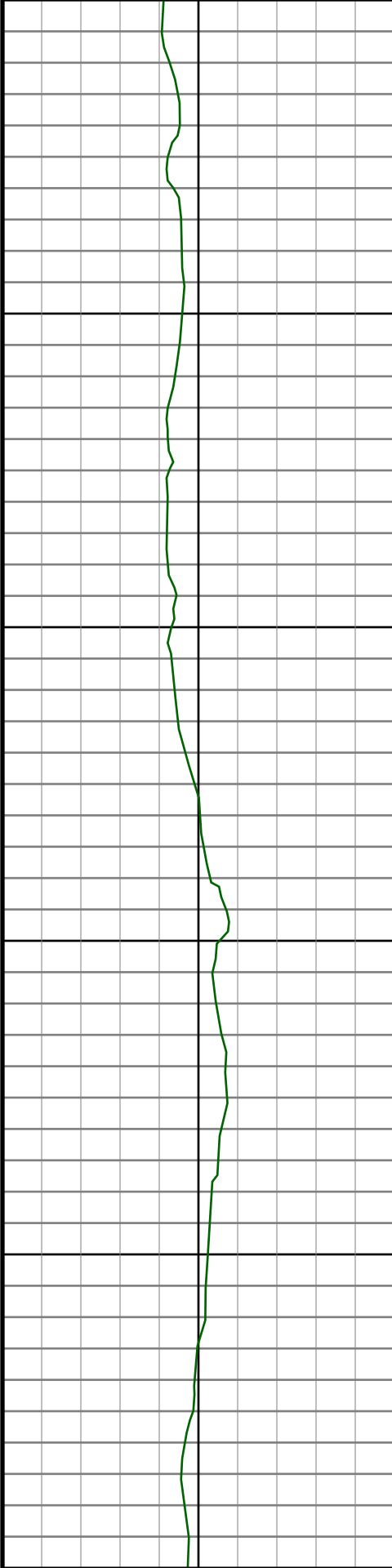
Elevations
KB: 4736
GL: 4712
DF: 4736

Run	Bit Size	Offsets		Depths		Dates	
		Gamma	Survey	Start	End	Start	End
1	8.75	-1.00	50.00	0	1260	10/20/2013	10/20/2013
2	8.75	61.45	56.45	1260	4981	10/20/2013	10/21/2013
3	8.75	61.88	56.88	4981	6109	10/21/2013	10/22/2013
4	6.125	70.90	65.90	6109	7490	10/23/2013	10/23/2013
5	6.125	71.35	66.35	7490	9670	10/24/2013	10/25/2013
6							
7							
8							
9							
10							









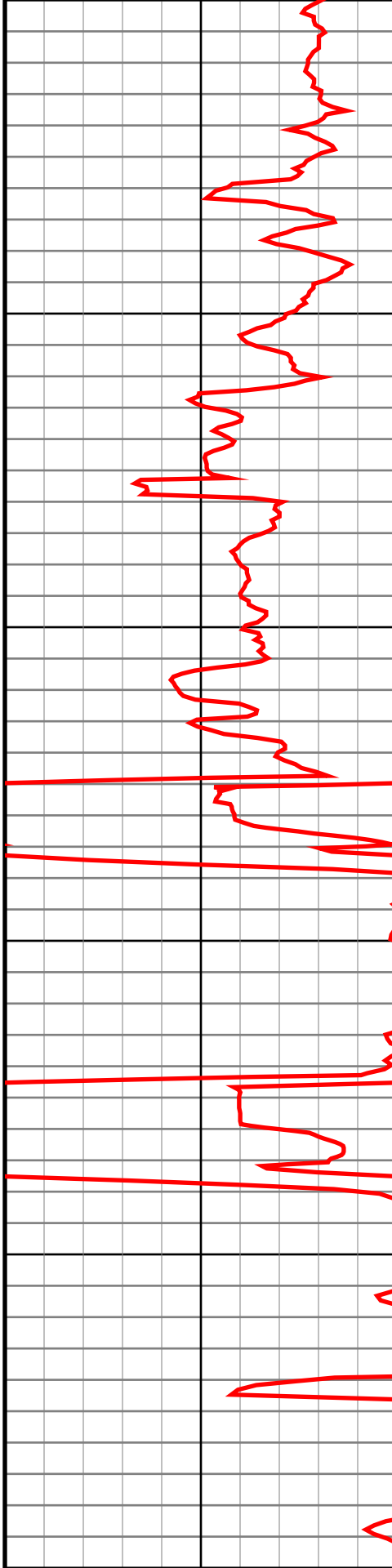
2800

2900

3000

3100

3200



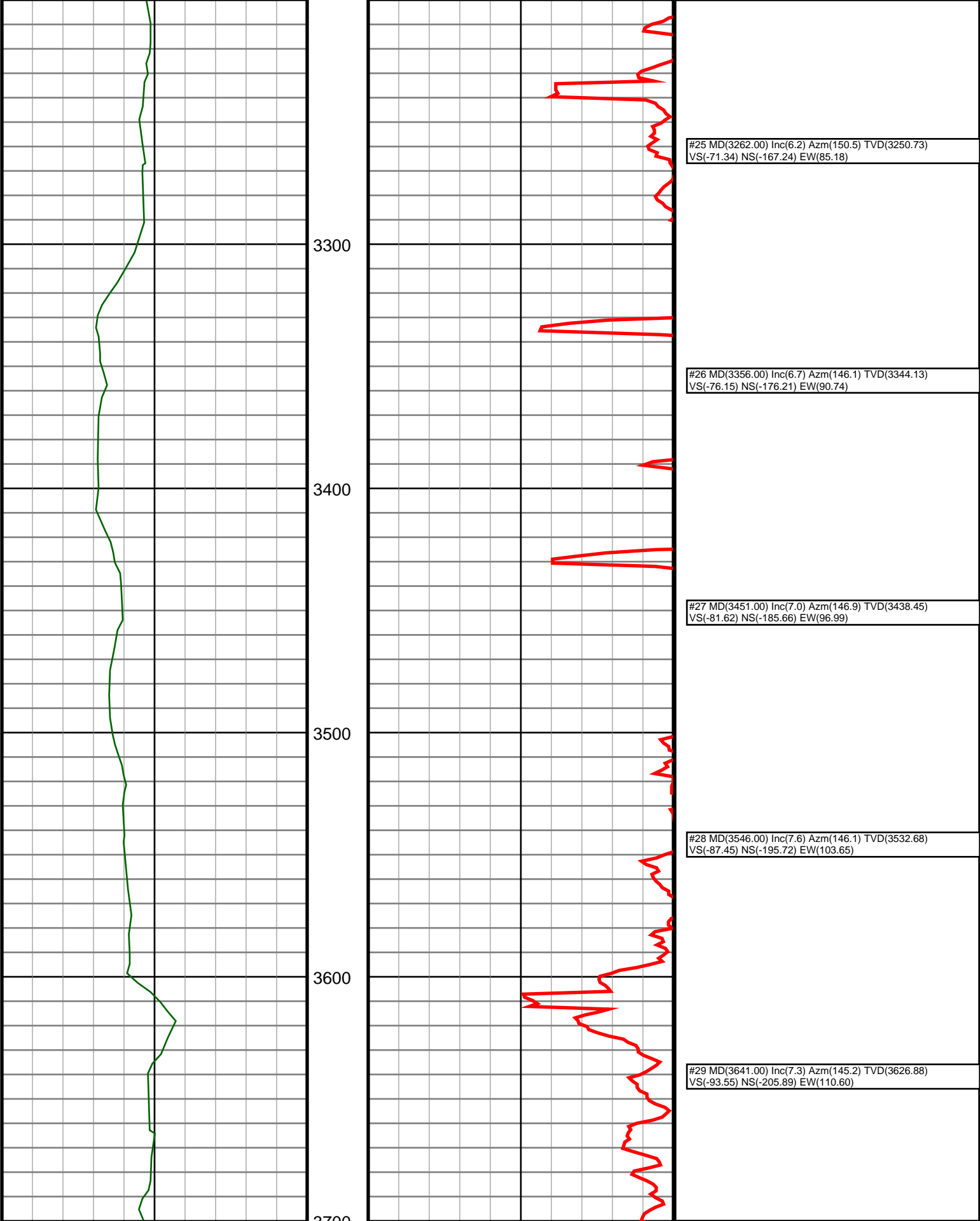
#20 MD(2787.00) Inc(6.5) Azm(147.1) TVD(2778.40)
VS(-49.69) NS(-123.80) EW(59.93)

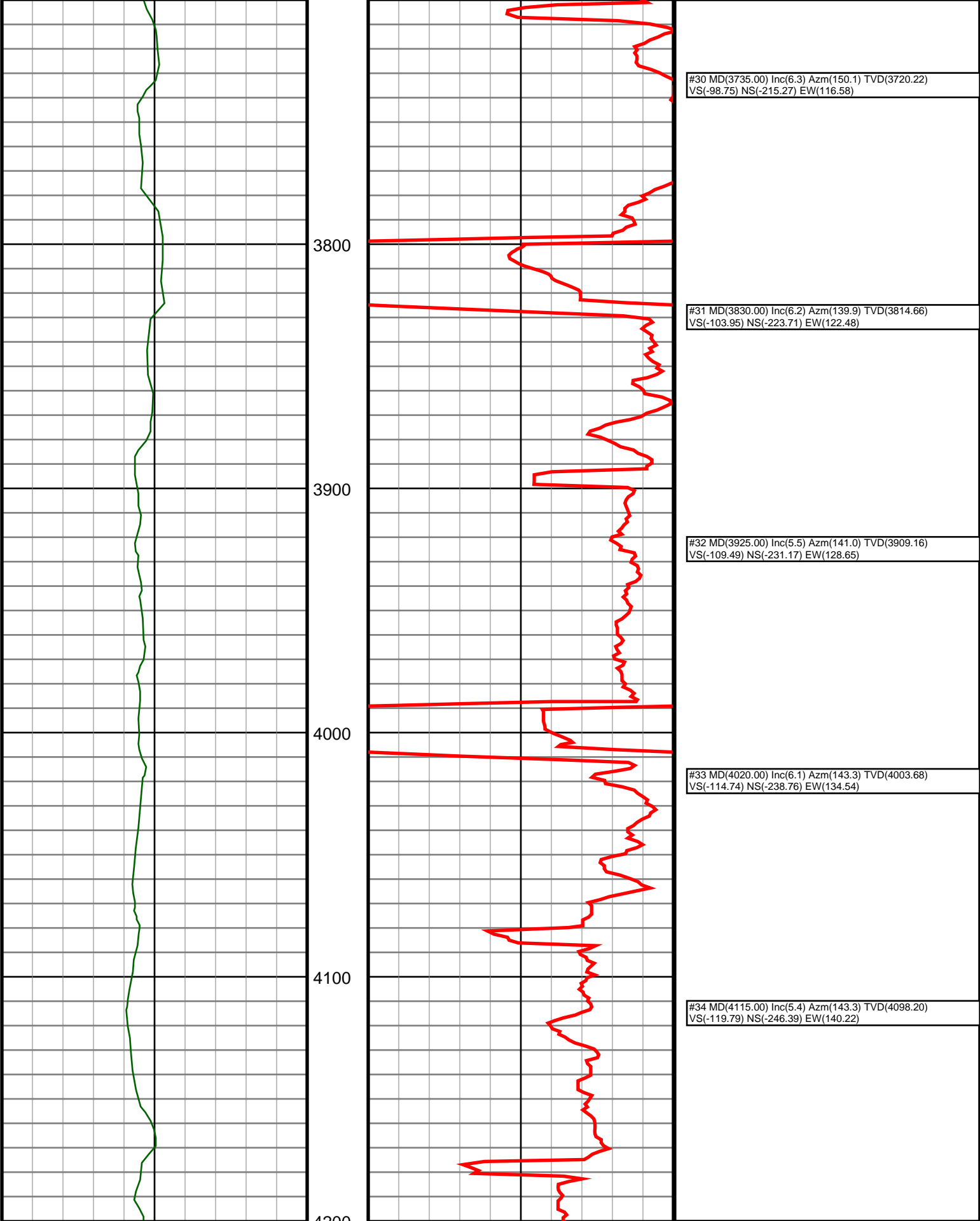
#21 MD(2882.00) Inc(5.6) Azm(148.7) TVD(2872.87)
VS(-54.32) NS(-132.27) EW(65.25)

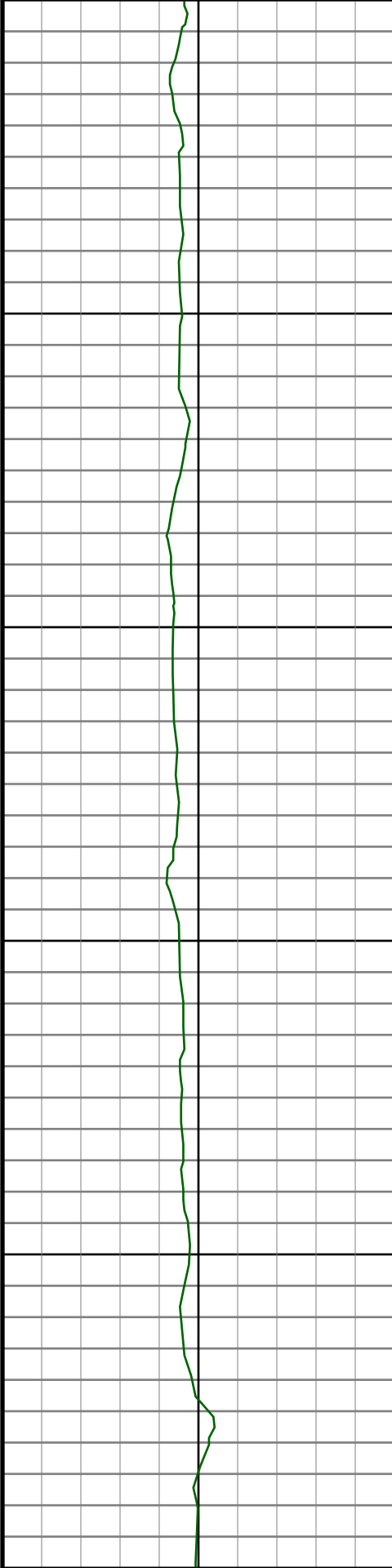
#22 MD(2977.00) Inc(6.1) Azm(143.1) TVD(2967.38)
VS(-59.09) NS(-140.27) EW(70.69)

#23 MD(3072.00) Inc(6.2) Azm(155.7) TVD(3061.84)
VS(-63.51) NS(-148.98) EW(75.84)

#24 MD(3167.00) Inc(6.2) Azm(152.7) TVD(3156.28)
VS(-67.21) NS(-158.22) EW(80.30)







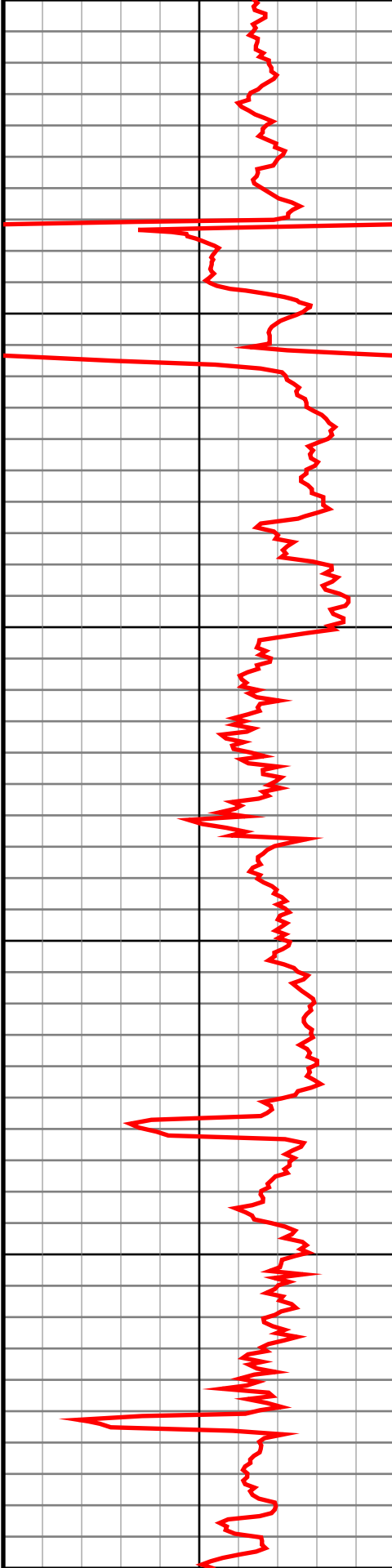
4300

4400

4500

4600

4700

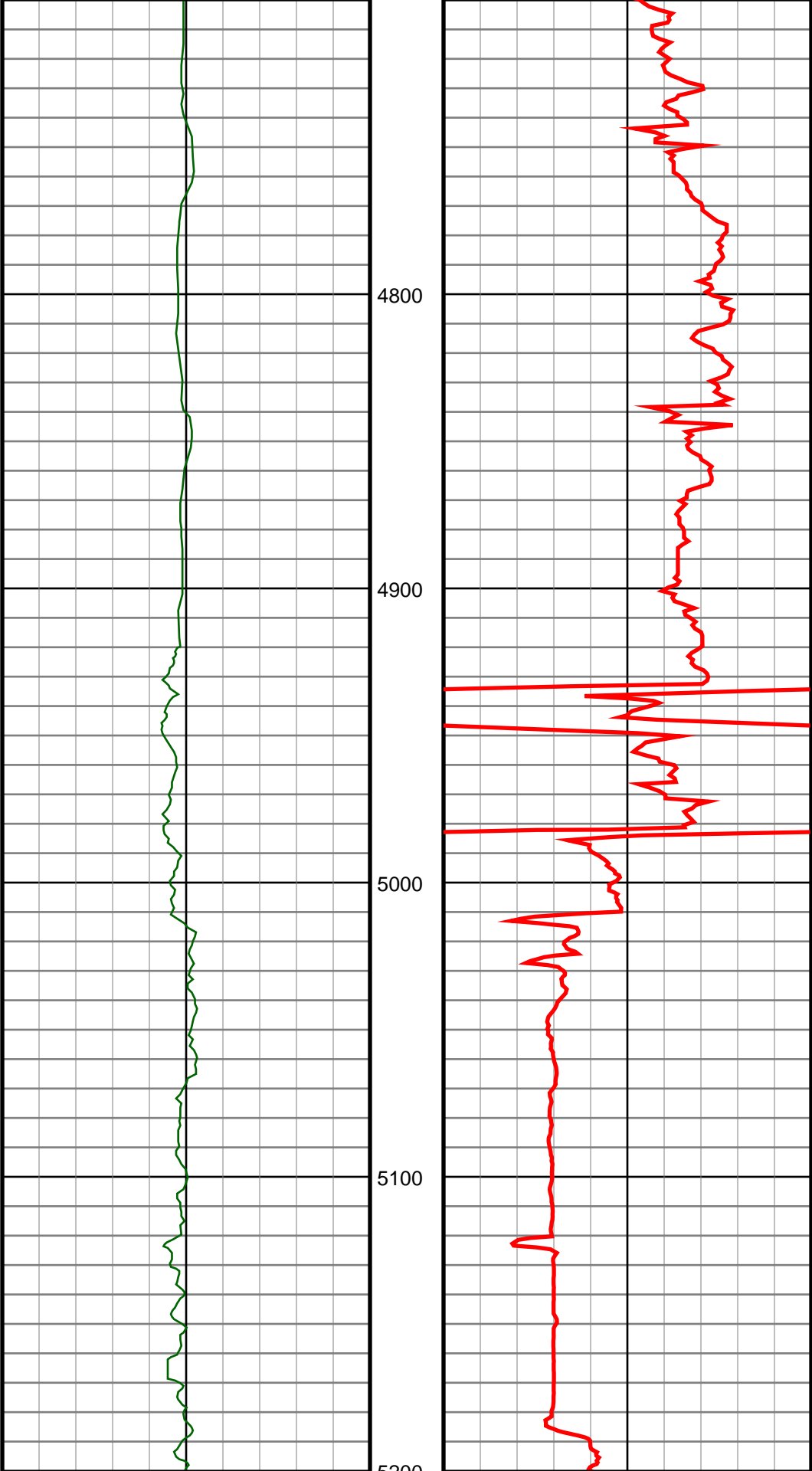


#35 MD(4210.00) Inc(4.0) Azm(139.4) TVD(4192.88)
VS(-124.11) NS(-252.49) EW(145.05)

#36 MD(4304.00) Inc(1.1) Azm(147.5) TVD(4286.77)
VS(-126.45) NS(-255.74) EW(147.67)

#37 MD(4494.00) Inc(0.9) Azm(14.9) TVD(4476.76)
VS(-127.80) NS(-255.84) EW(149.03)

#38 MD(4684.00) Inc(0.7) Azm(43.9) TVD(4666.74)
VS(-129.17) NS(-253.56) EW(150.22)

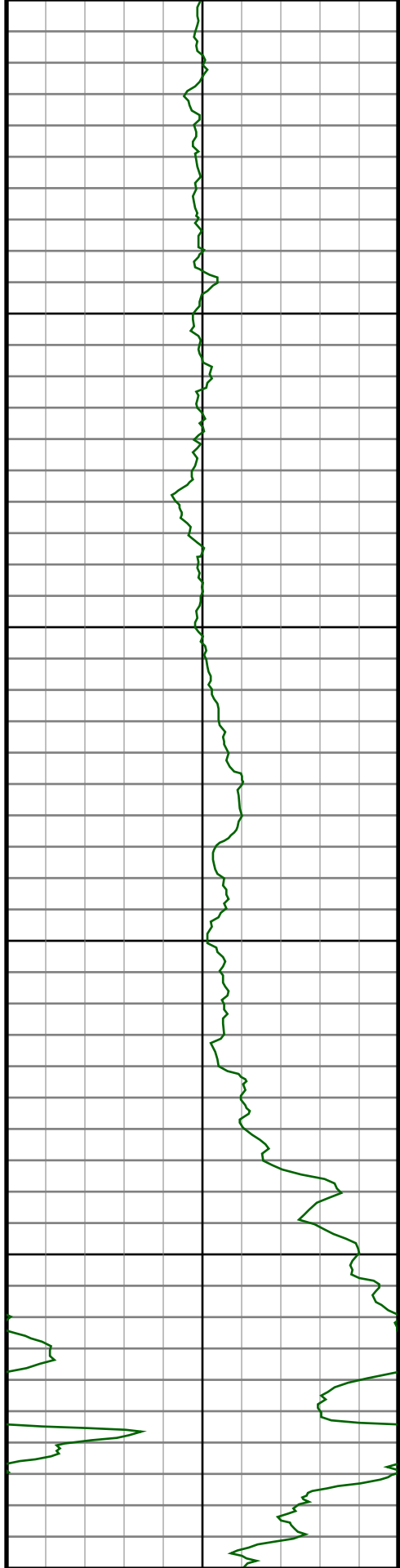


#39 MD(4873.00) Inc(1.1) Azm(30.6) TVD(4855.72)
VS(-131.09) NS(-251.17) EW(151.95)

#40 MD(4966.00) Inc(1.5) Azm(39.0) TVD(4948.69)
VS(-132.44) NS(-249.45) EW(153.17)

#41 MD(5061.00) Inc(6.2) Azm(271.0) TVD(5043.53)
VS(-128.19) NS(-248.40) EW(148.82)

#42 MD(5156.00) Inc(19.8) Azm(274.2) TVD(5135.87)
VS(-107.09) NS(-247.12) EW(127.54)



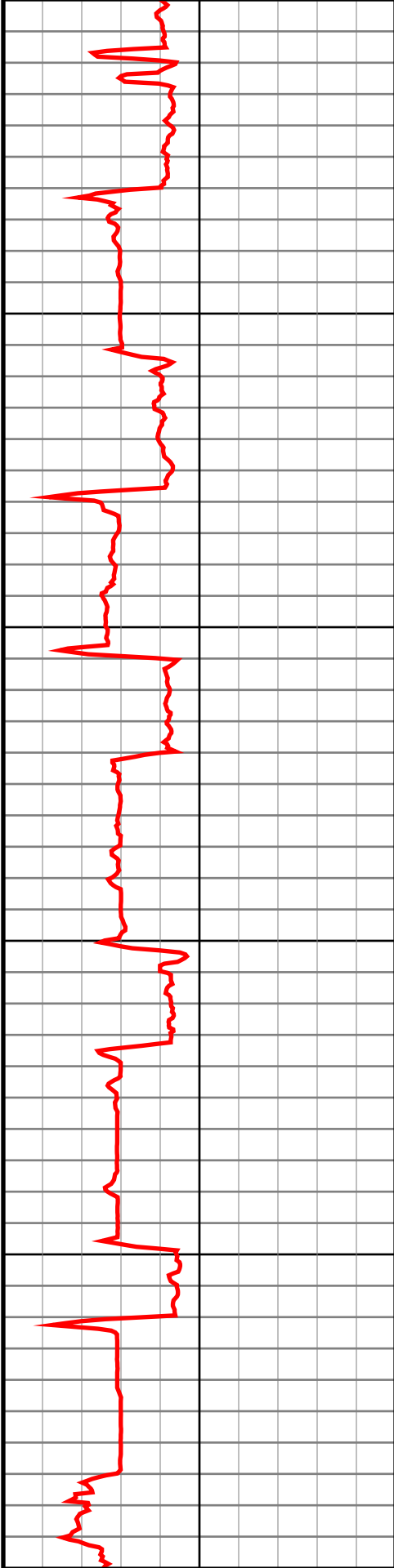
5300

5400

5500

5600

5700



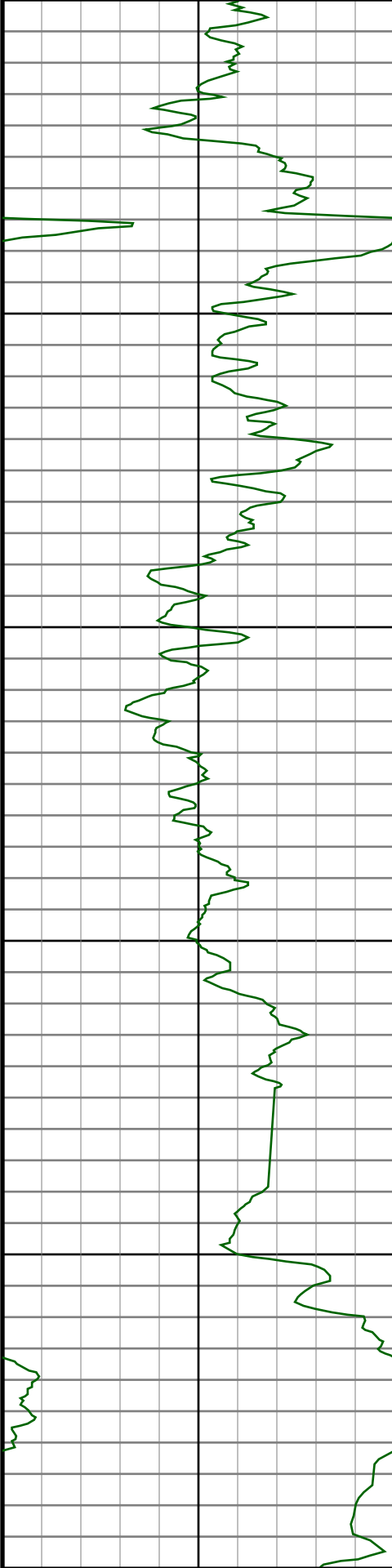
#43 MD(5251.00) Inc(21.5) Azm(274.0) TVD(5224.77)
VS(-73.97) NS(-244.73) EW(94.12)

#44 MD(5346.00) Inc(25.4) Azm(269.3) TVD(5311.91)
VS(-36.42) NS(-243.76) EW(56.37)

#45 MD(5440.00) Inc(30.8) Azm(267.9) TVD(5394.80)
VS(7.77) NS(-244.89) EW(12.12)

#46 MD(5535.00) Inc(36.8) Azm(270.2) TVD(5473.71)
VS(60.47) NS(-245.68) EW(-40.69)

#47 MD(5630.00) Inc(45.5) Azm(270.3) TVD(5545.18)
VS(122.69) NS(-245.41) EW(-103.14)



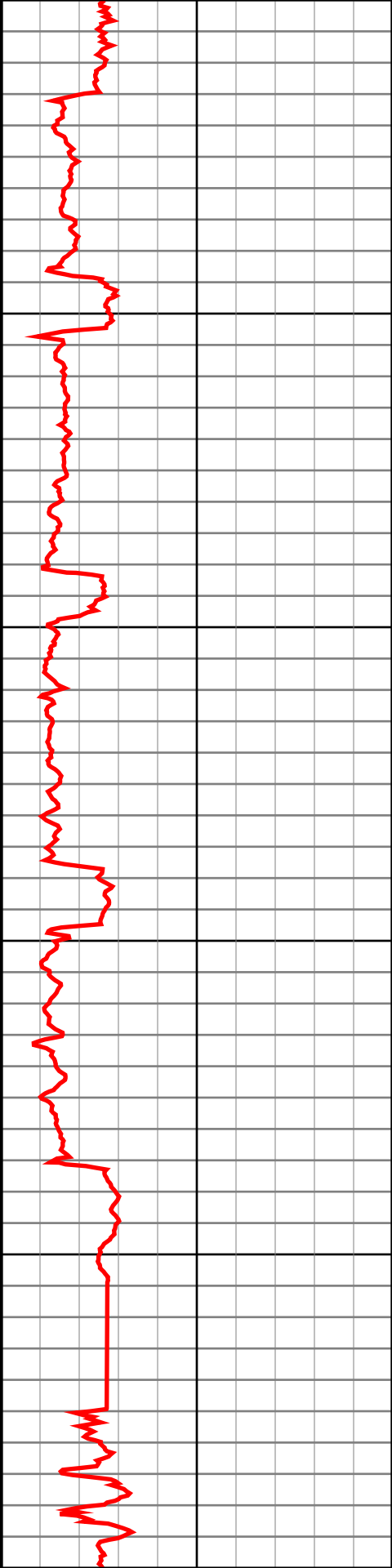
5800

5900

6000

6100

6200



#48 MD(5725.00) Inc(52.0) Azm(270.9) TVD(5607.78)
VS(193.78) NS(-244.64) EW(-174.52)

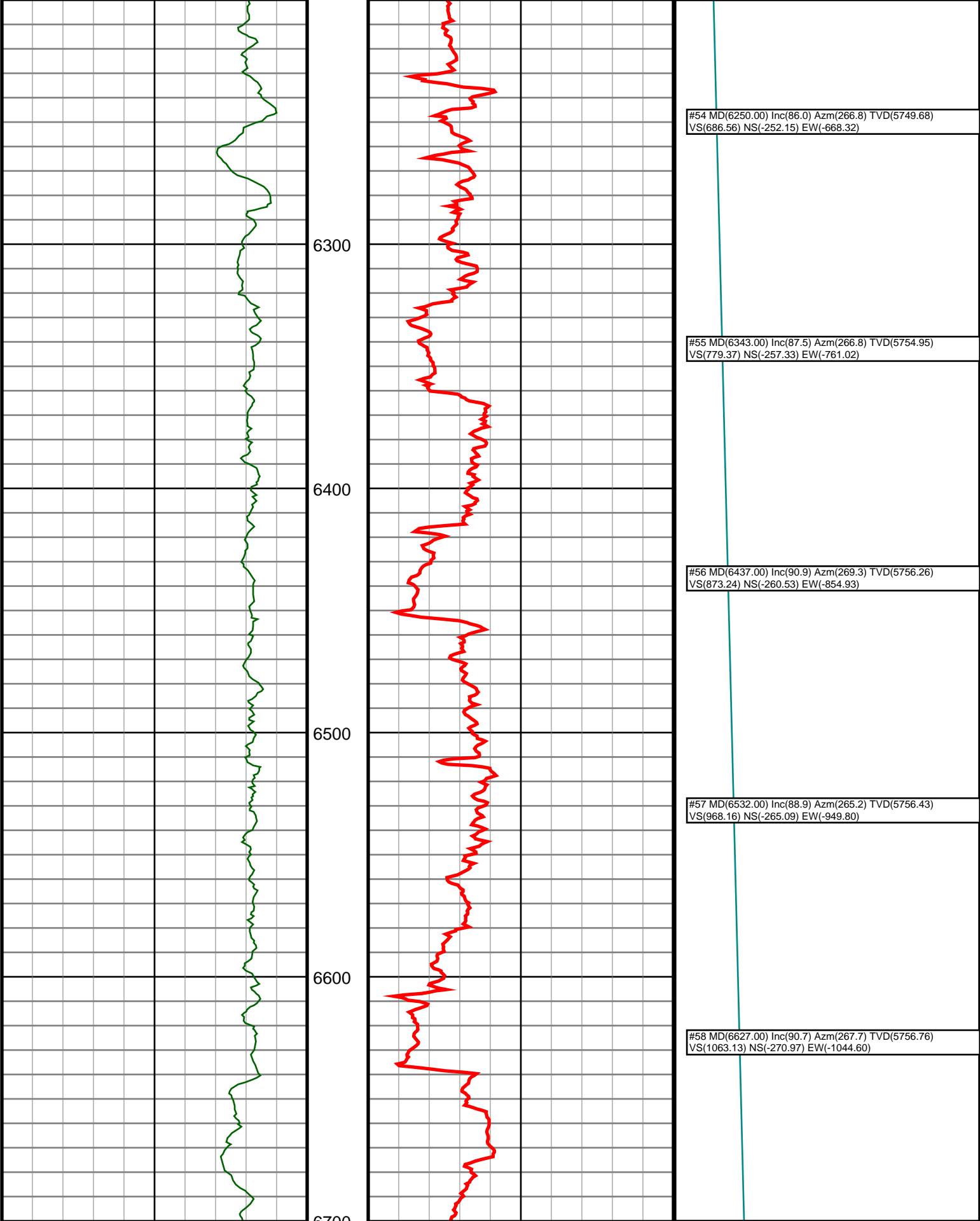
#49 MD(5820.00) Inc(59.4) Azm(270.7) TVD(5661.28)
VS(271.85) NS(-243.55) EW(-252.94)

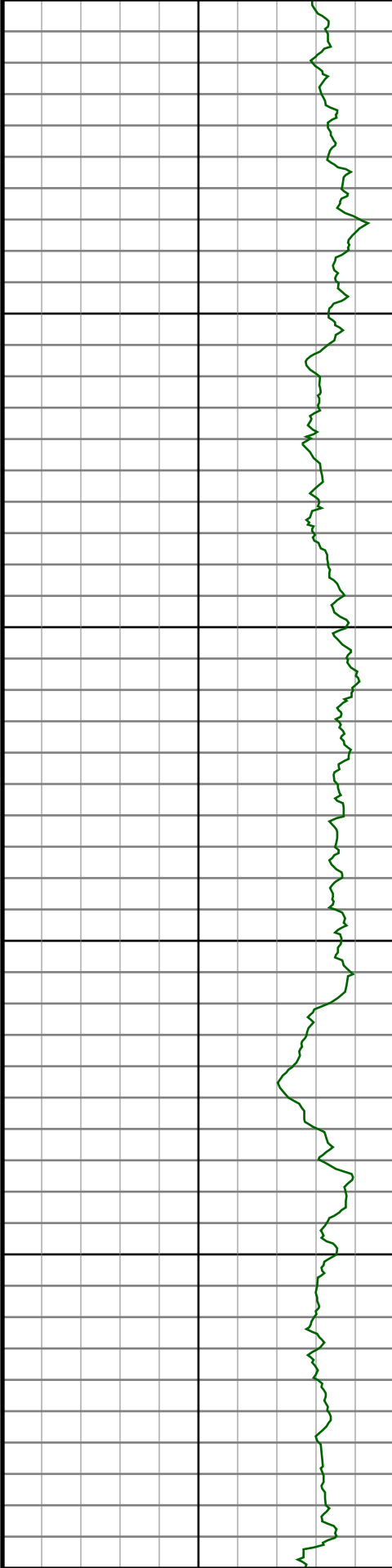
#50 MD(5914.00) Inc(68.8) Azm(270.0) TVD(5702.30)
VS(355.99) NS(-243.06) EW(-337.40)

#51 MD(6009.00) Inc(78.7) Azm(268.8) TVD(5728.85)
VS(446.86) NS(-244.03) EW(-428.48)

#52 MD(6049.00) Inc(84.3) Azm(268.2) TVD(5734.76)
VS(486.34) NS(-245.07) EW(-468.01)

#53 MD(6157.00) Inc(86.4) Azm(268.4) TVD(5743.51)
VS(593.84) NS(-248.26) EW(-575.60)





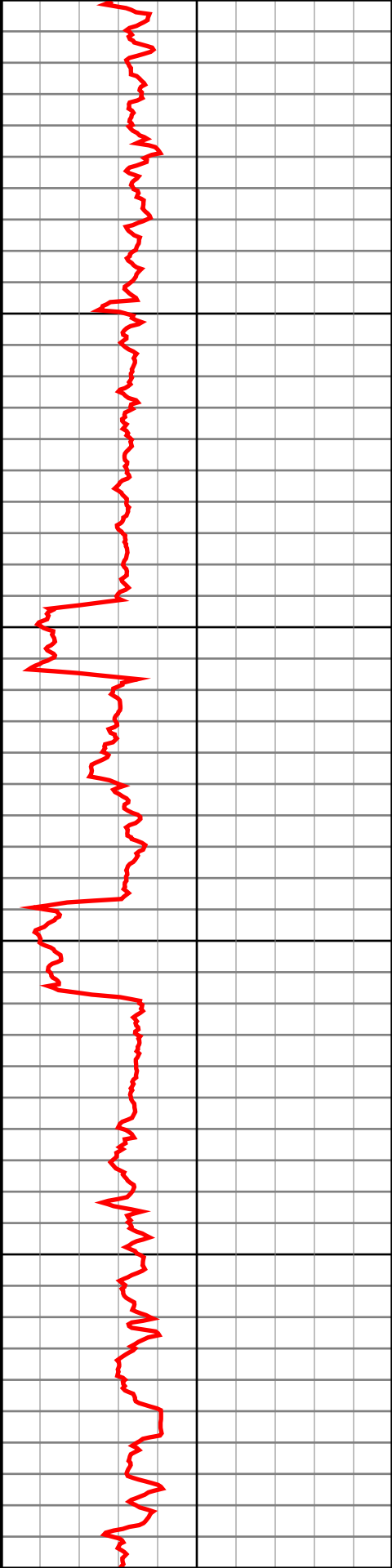
6800

6900

7000

7100

7200



#59 MD(6722.00) Inc(90.4) Azm(267.7) TVD(5755.85)
VS(1158.05) NS(-274.78) EW(-1139.52)

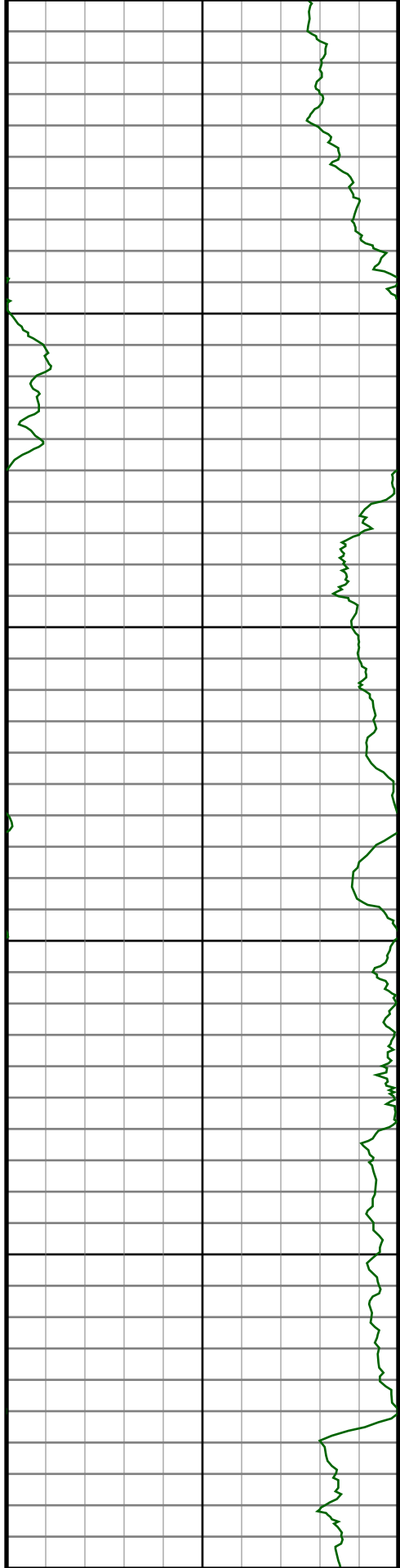
#60 MD(6817.00) Inc(89.9) Azm(267.9) TVD(5755.60)
VS(1252.96) NS(-278.43) EW(-1234.45)

#61 MD(6911.00) Inc(88.7) Azm(268.1) TVD(5756.75)
VS(1346.85) NS(-281.71) EW(-1328.39)

#62 MD(7006.00) Inc(90.8) Azm(270.7) TVD(5757.16)
VS(1441.60) NS(-282.70) EW(-1423.37)

#63 MD(7101.00) Inc(90.6) Azm(270.7) TVD(5756.00)
VS(1536.18) NS(-281.54) EW(-1518.35)

#64 MD(7196.00) Inc(89.9) Azm(270.3) TVD(5755.58)
VS(1630.79) NS(-280.71) EW(-1613.35)



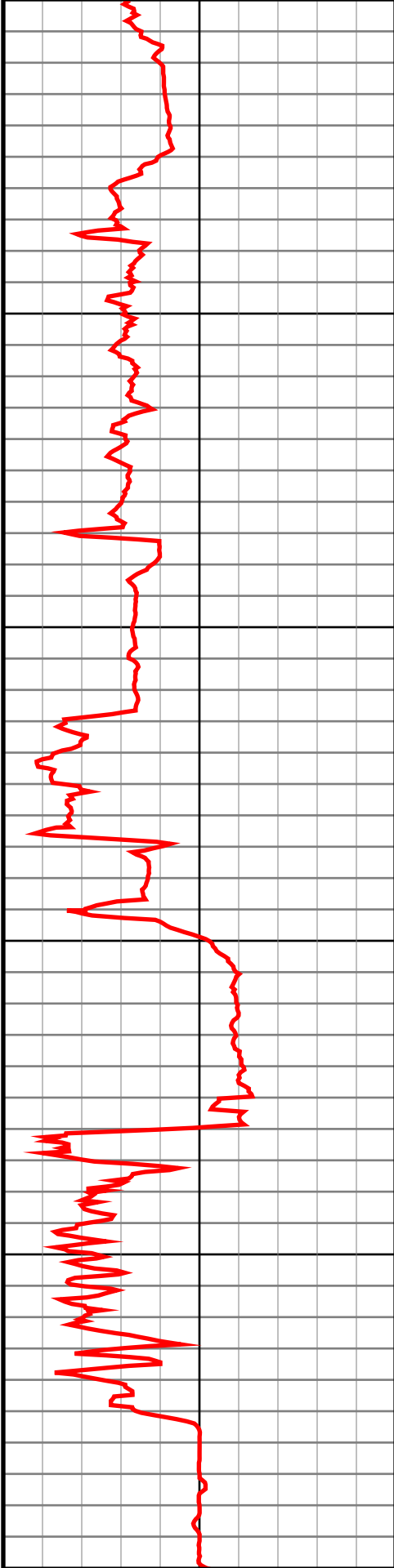
7300

7400

7500

7600

7700



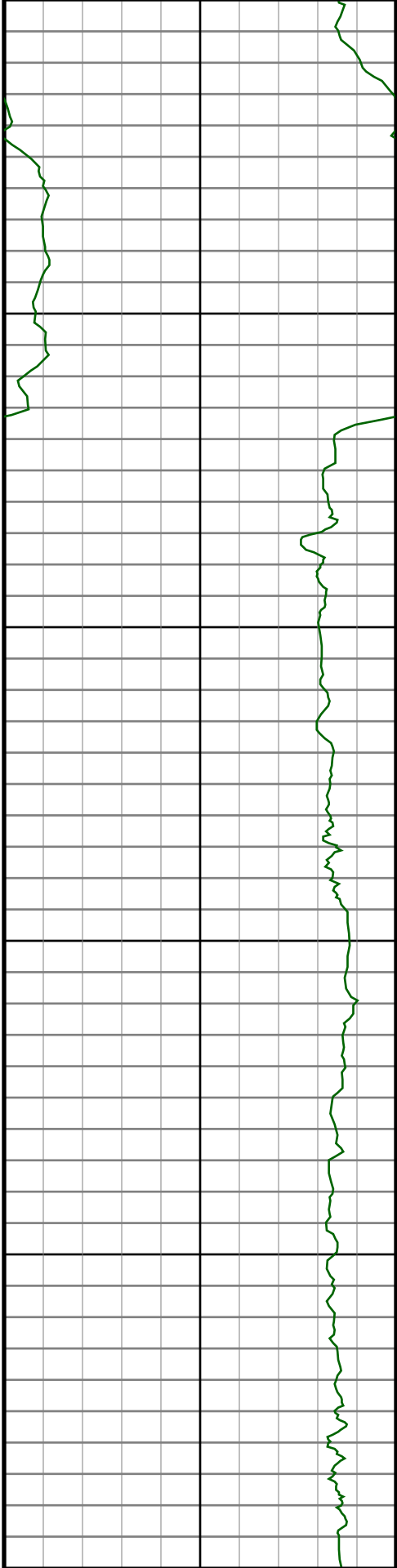
#65 MD(7291.00) Inc(89.8) Azm(270.5) TVD(5755.83)
VS(1725.43) NS(-280.05) EW(-1708.34)

#66 MD(7386.00) Inc(89.3) Azm(270.0) TVD(5756.58)
VS(1820.07) NS(-279.63) EW(-1803.34)

#67 MD(7481.00) Inc(89.4) Azm(269.5) TVD(5757.66)
VS(1914.79) NS(-280.05) EW(-1898.33)

#68 MD(7576.00) Inc(88.7) Azm(267.5) TVD(5759.23)
VS(2009.63) NS(-282.53) EW(-1993.28)

#69 MD(7671.00) Inc(88.5) Azm(265.9) TVD(5761.55)
VS(2104.57) NS(-288.00) EW(-2088.09)



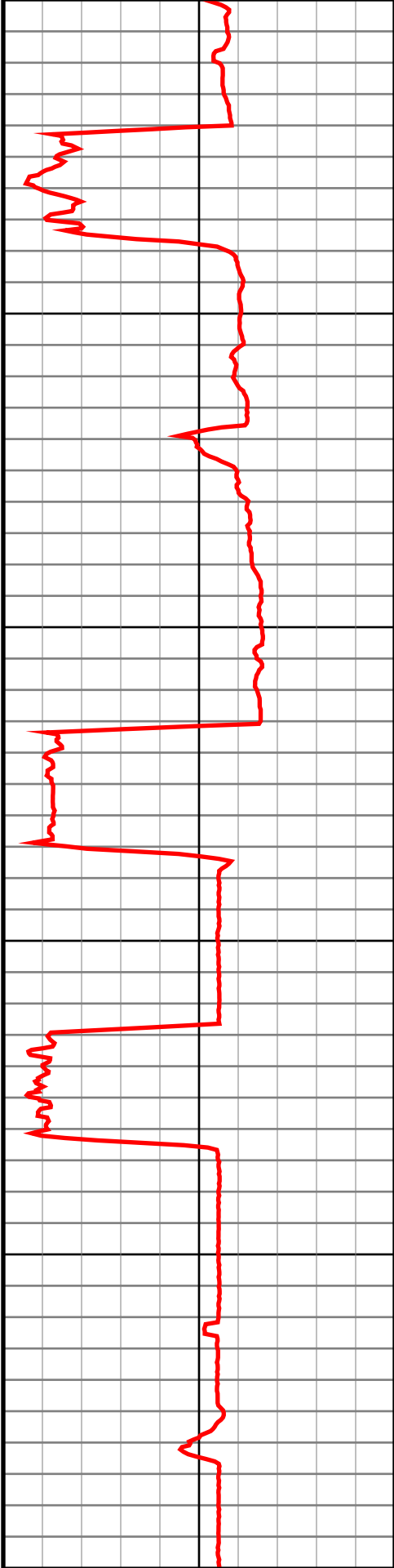
7800

7900

8000

8100

8200



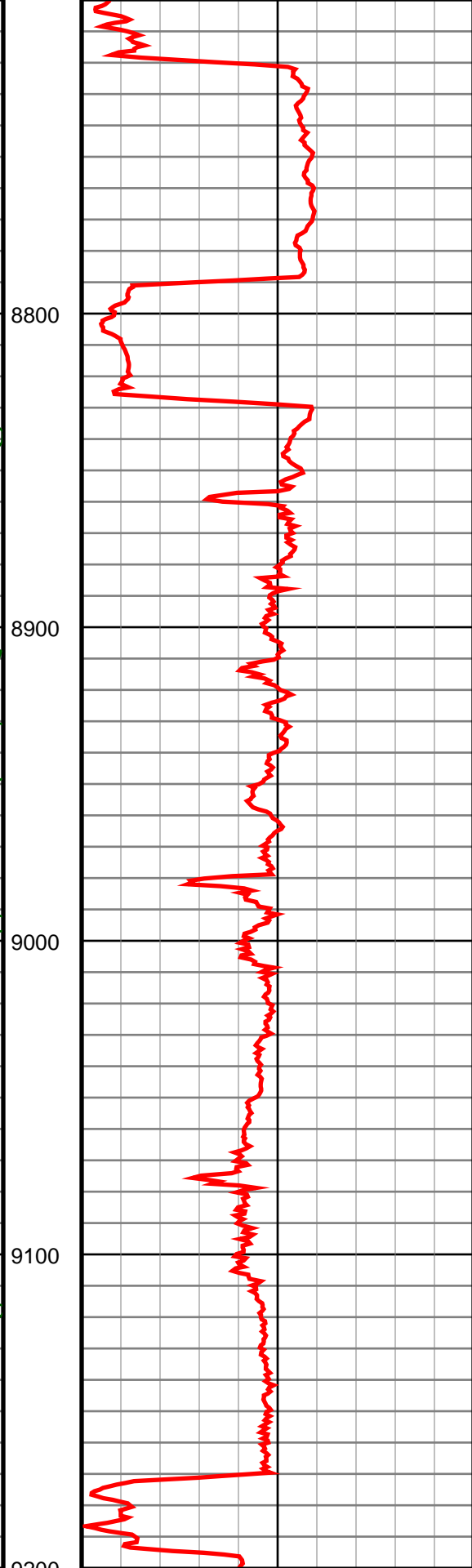
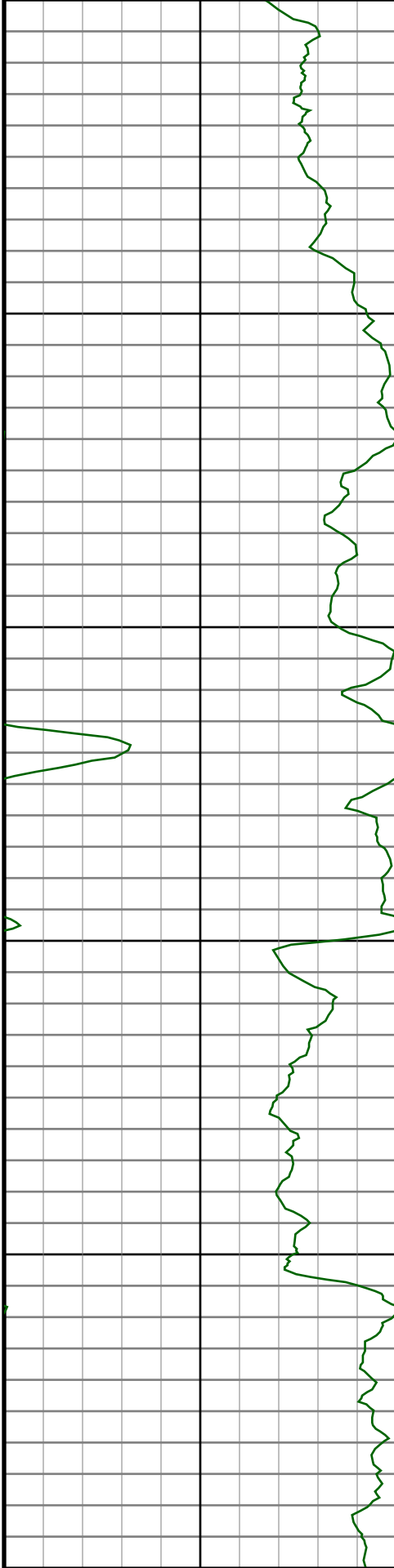
#70 MD(7766.00) Inc(89.5) Azm(266.3) TVD(5763.21)
VS(2199.54) NS(-294.46) EW(-2182.86)

#71 MD(7861.00) Inc(89.0) Azm(265.8) TVD(5764.46)
VS(2294.53) NS(-301.00) EW(-2277.62)

#72 MD(7956.00) Inc(88.9) Azm(267.7) TVD(5766.20)
VS(2389.48) NS(-306.39) EW(-2372.45)

#73 MD(8050.00) Inc(90.3) Azm(270.3) TVD(5766.85)
VS(2483.28) NS(-308.03) EW(-2466.42)

#74 MD(8145.00) Inc(89.2) Azm(267.0) TVD(5767.27)
VS(2578.10) NS(-310.27) EW(-2561.38)



#80 MD(8714.00) Inc(91.4) Azm(268.9) TVD(5755.87)
VS(3145.92) NS(-323.59) EW(-3129.99)

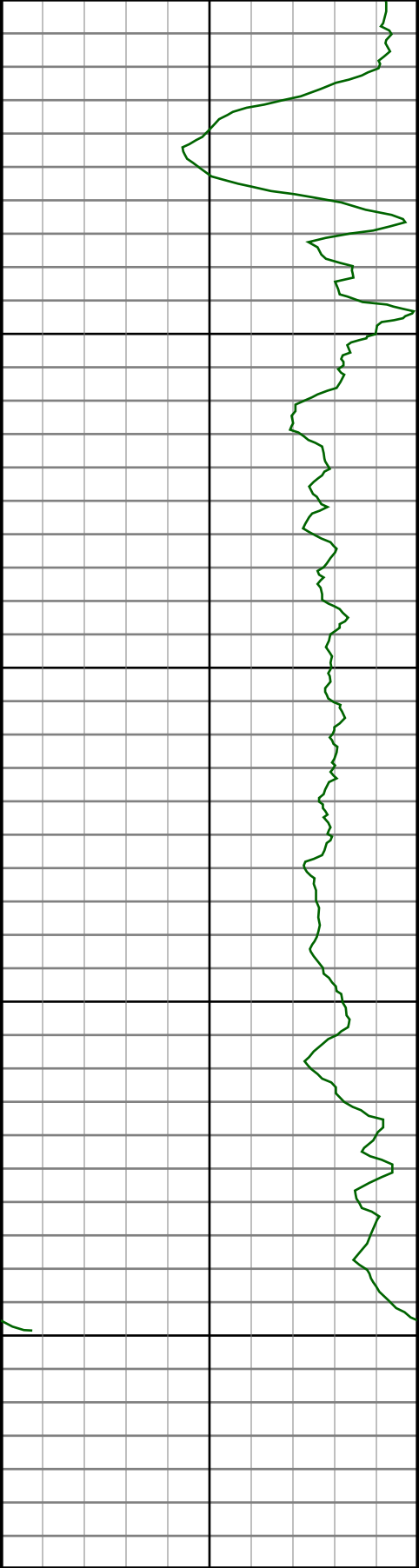
#81 MD(8809.00) Inc(90.5) Azm(271.6) TVD(5754.29)
VS(3240.55) NS(-323.18) EW(-3224.96)

#82 MD(8904.00) Inc(90.0) Azm(270.7) TVD(5753.88)
VS(3335.06) NS(-321.27) EW(-3319.94)

#83 MD(8998.00) Inc(90.5) Azm(270.2) TVD(5753.47)
VS(3428.68) NS(-320.53) EW(-3413.94)

#84 MD(9093.00) Inc(90.8) Azm(270.0) TVD(5752.39)
VS(3523.35) NS(-320.37) EW(-3508.93)

#85 MD(9188.00) Inc(88.7) Azm(267.7) TVD(5752.81)
VS(3618.16) NS(-322.27) EW(-3603.90)

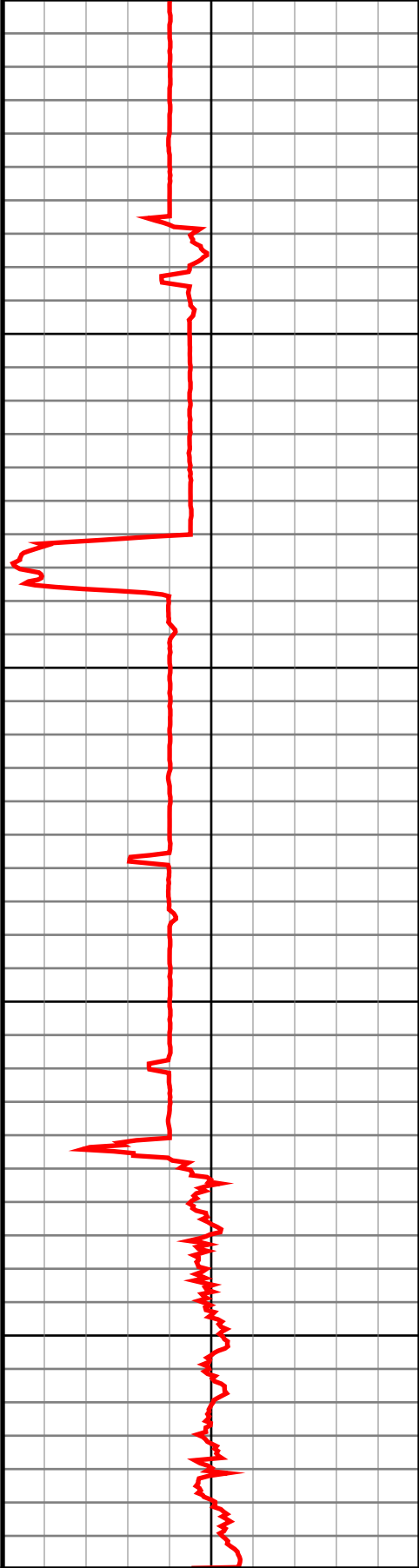


9300

9400

9500

9600



#86 MD(9283.00) Inc(89.8) Azm(268.1) TVD(5754.05)
VS(3713.06) NS(-325.76) EW(-3698.82)

#87 MD(9378.00) Inc(88.1) Azm(267.4) TVD(5755.79)
VS(3807.96) NS(-329.48) EW(-3793.73)

#88 MD(9472.00) Inc(86.6) Azm(264.0) TVD(5760.14)
VS(3901.84) NS(-336.52) EW(-3887.35)

#89 MD(9567.00) Inc(86.0) Azm(263.8) TVD(5766.27)
VS(3996.61) NS(-346.60) EW(-3981.61)

9600.0:Bit Projection @9670' INC: 85.6 AZM: 263.1
TVD: 5774.05 VS: 4099.24

#91 MD(9670.00) Inc(85.6) Azm(263.1) TVD(5774.05)
VS(4099.24) NS(-346.60) EW(-3981.61)

0.0 250.0 500.0
Gamma
API

0.0 500.0 1000.0
ROP
0

0.0 5000.0 10000.0
VS
ft