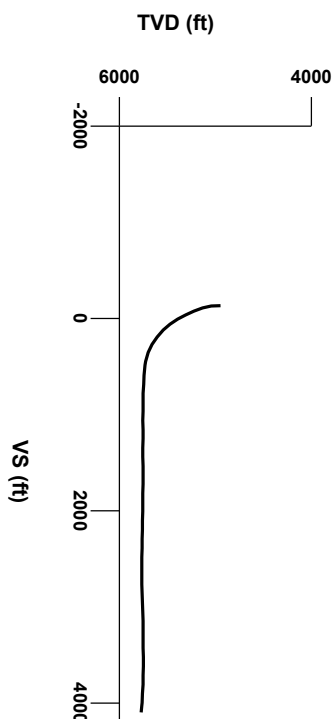


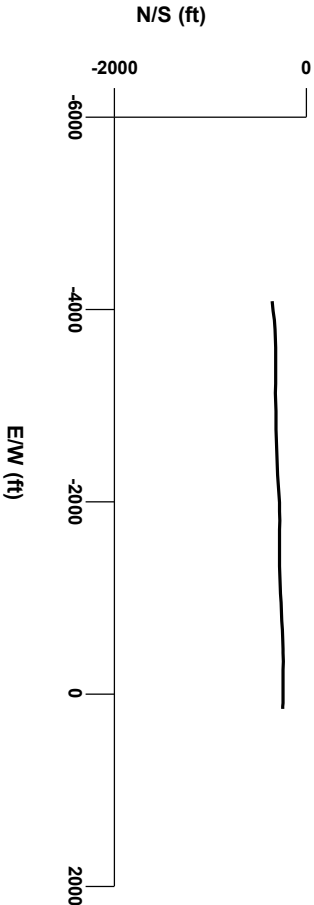
LOG created using LPLOT VH Version 3.0, October 25, 2013, Copyright (C) 1999-2009 Pason Systems Corp.

OPERATOR: NOBLE ENERGY INC
WELL: ROHN STATE LD09-66HN
LOCATION: SENE SEC 9 T9N R58W
COUNTY: WELD
STATE: COLORADO
SPOT: 1725' FNL; 480' FEL
ELEVATION: 4728' GL; 4752' KB
FIELD: WILDCAT
SPUD DATE: 10/20/2013
TD DATE: 10/25/2013
DATES LOGGED: 10/21/2013 - 10/25/2013
DEPTHS LOGGED: 4981' - 9670' MD
LOGGERS: LAURA KELLOGG; CONOR PESICKA
DRILLING FLUID: LSND
DRILLING RIG: H&P 273
API: 05-123-37539
LOG TYPE: HORIZONTAL
SCALE: 1:240 (5 inches per 100 feet)
REMARKS: WELLSITE GEOLOGIC SERVICES
 PROVIDED BY COLUMBINE LOGGING INC.



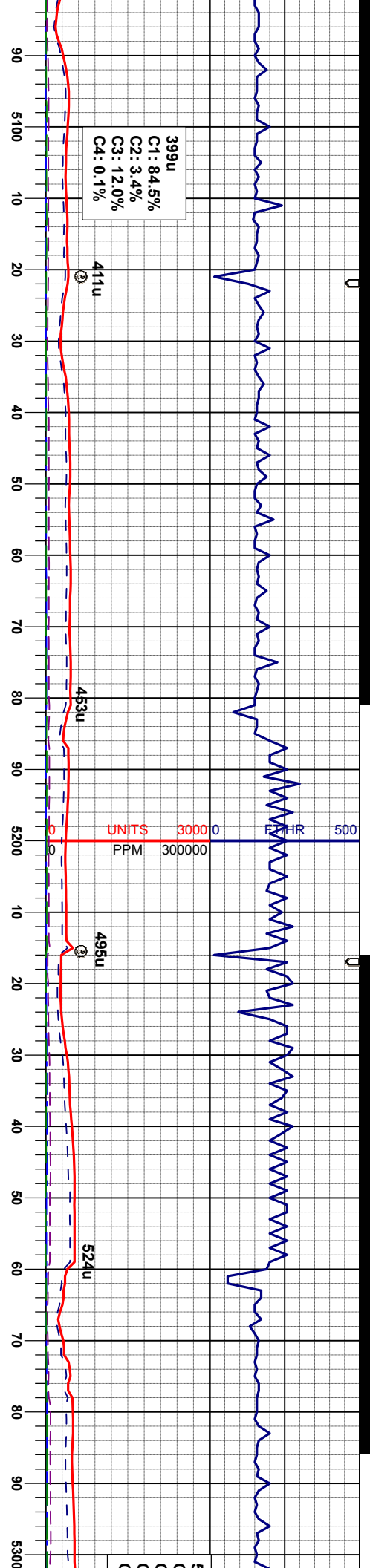
Survey Elevation

Survey Plan



6000

LITHOLOGIES



WT IN 9.50/ OUT 9.50
VIS IN 34/ OUT 34

MD 5156'
INC 19.8°
AZM 274.2°
TVD 5135.87'

SLTYSH: ltgy-gy, r s&p, bblky-sbply, sft-
firm, gt-sily tex, r sdy tex, arg cnt

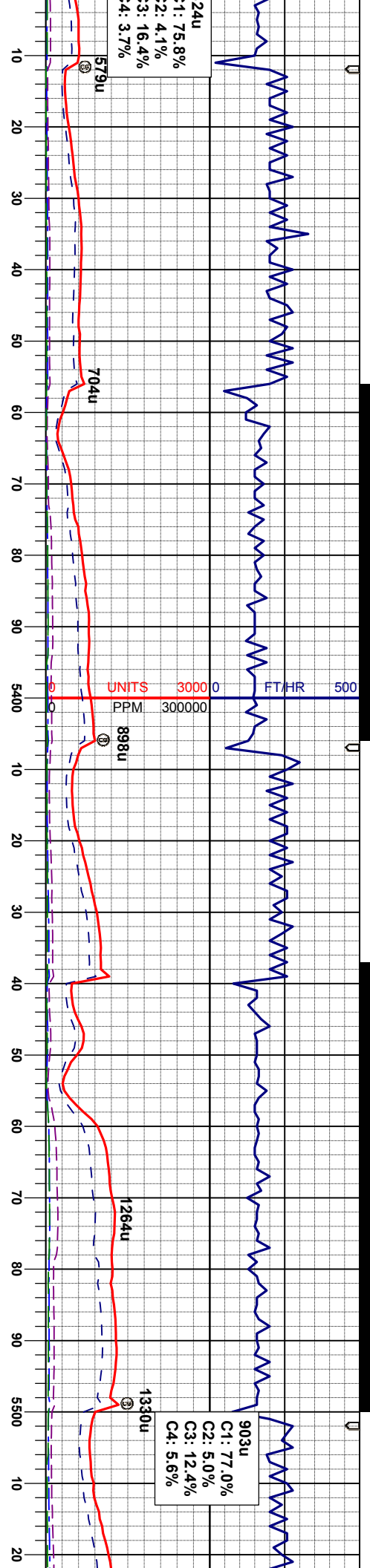
SLTYSH: ltgy-gy, r s&p, sbbky-sbply, sft-
firm, gt-sily tex, sme sdy tex, arg cnt, len
ss

SLTYSH: ltgy-gy, r s&p, sbbky-sbply, gt-
sily tex, sme sdy tex, arg cnt

MD 5261'
INC 21.5°
AZM 274.0°
TVD 5224.77'

WT IN 9.70/ OUT 9.70
VIS IN 36/ OUT 36

SLTYSH: ltgy-gy, r s&p, bblky-sbply, sft-
firm, gt-sily tex, sme sdy tex, arg cnt, len
ss, tr bm ss



WT IN 10.00/ OUT 10.00
VIS IN 34/ OUT 34

MD 5346'
INC 25.4°
AZM 269.3°
TVD 5311.91'

SLTYSH: lly-gy, r s&p, dbkly-sbply, sft- firm, gt-sily tex, sme sdy tex, arg cnt, len ss, tr brn ss

SLTYSH: lly-gy, sbdkly-sbply, sft- firm, gt-sily tex, r sdy tex, arg cnt

WT IN 10.30/ OUT 10.30
VIS IN 36/ OUT 36

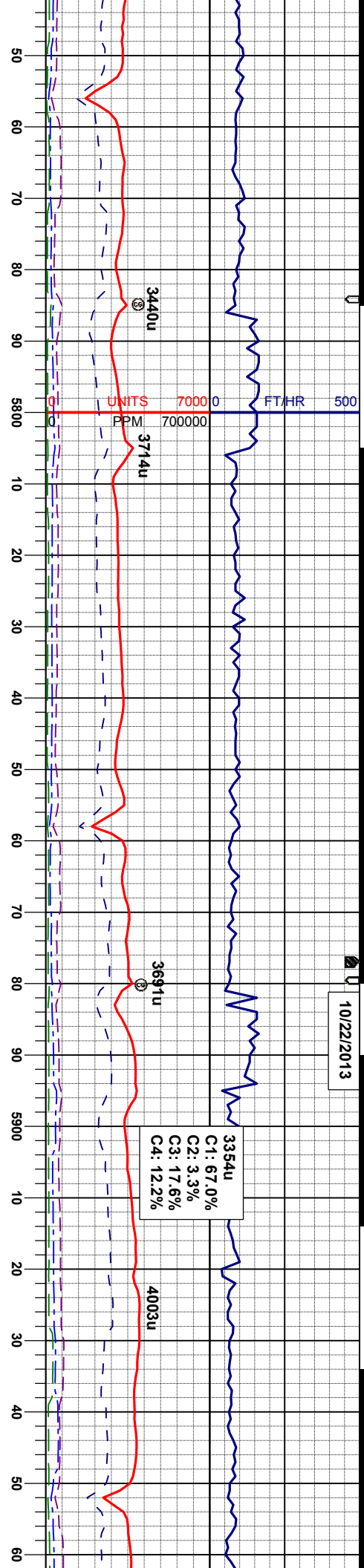
MD 5440'
INC 30.8°
AZM 267.9°
TVD 5394.80'

SLTYSH: lly-gy, sbdkly-sbply, sft- firm, gt-sily tex, bnd tex ip, arg cnt

SLTYSH: lly-gy, s



10/22/2013



3354u
C1: 67.0%
C2: 3.3%
C3: 17.6%
C4: 12.2%

3691u

3440u

3714u

MARL @
D/ 5618TVD

377

4900 40 API 350

WT IN 10.50/ OUT 10.50
VIS IN 36/ OUT 36

189

NIO B CHALK @
5851 MD/ 5675 TVD

WT IN 10.50/ OUT 10.50
VIS IN 37/ OUT 37

93

NIO B MARL @
5928 MD/ 5706 TVD

MD 5820'
INC 59.4°
AZM 270.7°
TVD 5661.28'

MD 5914'
INC 68.8°
AZM 270.0°
TVD 5702.30'

MR.L: ltyg-gy-gybrn, sbblky-sbply, gt-mot
tex, sft-firm, v calc
CHK: ltyg-crm, sbblky, mot-brd tex, wxy ip,
sft, v mnt, v calc

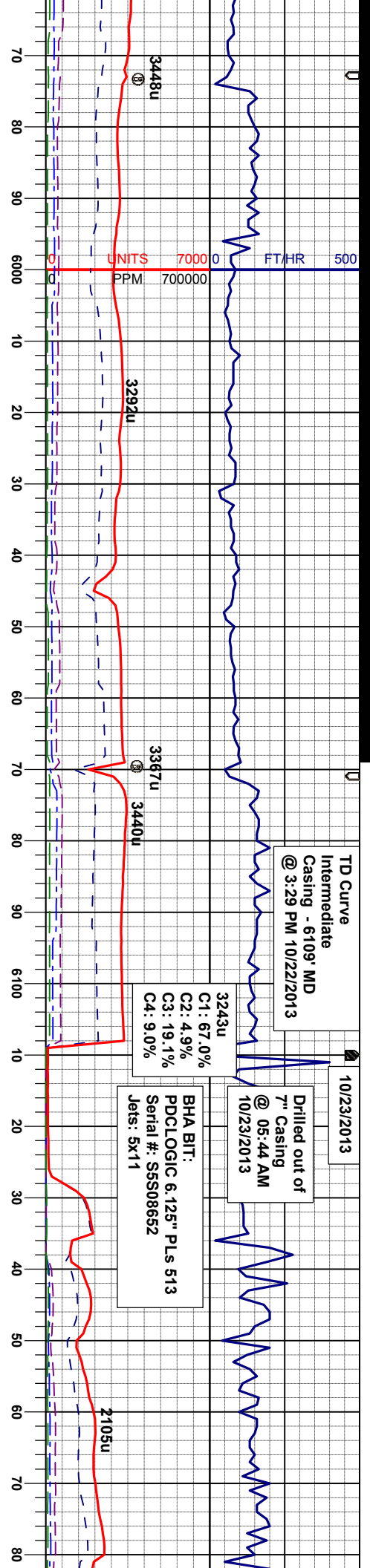
MR.L: ltyg-gy-gybrn, sbblky-sbply, gt-mot
tex, sft-firm, v calc
CHK: ltyg-crm, sbblky, mot-brd tex, wxy ip,
sft, v mnt, v calc

CHK: ltyg-crm, sbblky, mot-wxy tex, smwt
mnt, sft, v calc
MR.L: ltyg-gy-gybrn, sbblky-sbply, gt-mot
tex, sft-firm, v calc

CHK: ltyg-crm, sbblky, mot-wxy tex, smwt
mnt, sft, v calc, rr calc incl
MR.L: gy-gybrn, rr dgy, sbblky-sbply, gt-
mot tex, sft-firm, v calc, calc incl

CHK: ltyg-
sft, v calc
MR.L: gy-
-mot tex.





WT IN 10.50/ OUT 10.50
VIS IN 36/ OUT 36

WT IN 10.05/ OUT 10.05
VIS IN 33/ OUT 33

MD 6009'
INC 78.7°
AZM 268.8°
TVD 5728.85'

MD 6049'
INC 84.3°
AZM 268.2°
TVD 5734.76'

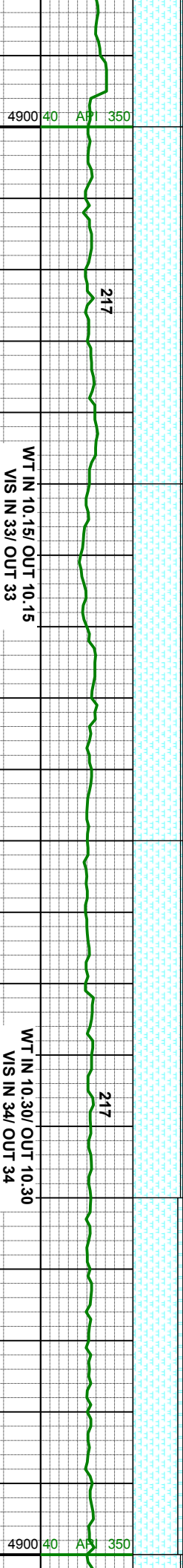
MD 6157'
INC 86.4°
AZM 268.4°
TVD 5743.51'

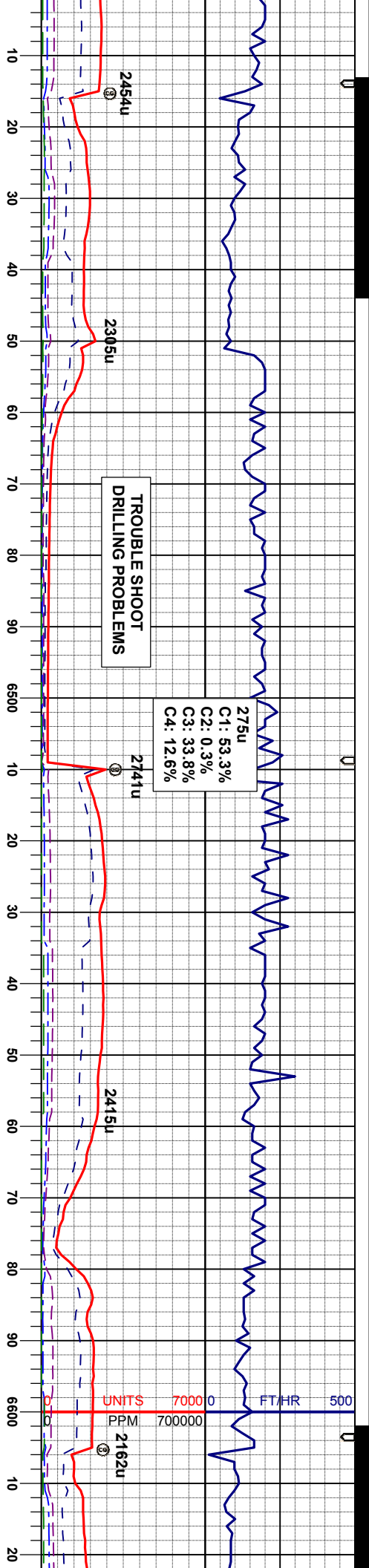
MR.L: gy-gybrn, sme dkgy, sbblky-sbply, gt
-mot tex, bnd, sft- firm, v calc, abnt calc
incl, tr bent w/ pyr strg, abnt fos frag
CHK: ltgy-gy, sbblky, mot-wxy tex, v mrlly,
sft, v calc, rr calc incl

MR.L: gy-gybrn, sme dkgy, sbblky-sbply, gt
-mot tex, bnd, sft- firm, v calc, abnt calc
incl, tr bent w/ pyr strg, abnt fos frag
CHK: ltgy-gy, sbblky, mot-wxy tex, v mrlly,
sft, v calc, rr calc incl

MR.L: gy-gybrn, sme dkgy, sbblky-sbply, gt
-mot tex, bnd, sft- firm, v calc, abnt calc
incl, tr bent, abnt fos frag
CHK: ltgy-gy, sbblky, mot-wxy
sft, v calc, rr calc incl







WT IN 10.40/ OUT 10.40
VIS IN 34/ OUT 34

MD 6437'
INC 90.9°
AZM 269.3°
TVD 5755.93'

MRU: gy-gybm, sme dkgy, sbblky-sbply, gt
-mot tex, bnd, sft, v calc, abnt calc incl, tr
bent, abnt fos frag
CHK: ltgy-gy, sbblky, mot-wxy tex, v mrlly,
sft, v calc

WT IN 10.50/ OUT 10.50
VIS IN 33/ OUT 33

MD 6532'
INC 88.9°
AZM 265.2°
TVD 5756.43'

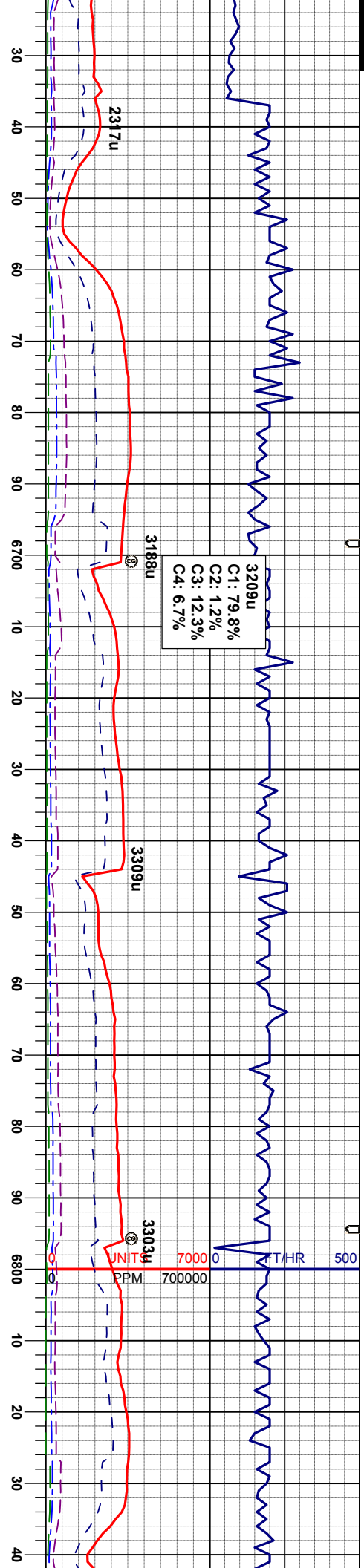
MRU: gy-gybm, sme dkgy, sbblky-sbply, gt
-mot tex, bnd, sft, v calc, abnt calc incl,
abnt bent, occ dism pyr, abnt fos frag
CHK: ltgy-gy, sbblky, mot-wxy tex, v mrlly,
sft, v calc

MRU: gy-gybm, sme dkgy, sbblky-sbply, gt
-mot tex, bnd, sft, v calc, abnt calc incl,
abnt bent, occ dism pyr, abnt fos frag
CHK: ltgy-gy, sbblky, mot-wxy tex, v mrlly,
sft, v calc

MD
INC
AZ
TV

MRU: gy-gybm, sm
-mot tex, bnd, sft, v
abnt bent, occ dism
CHK: ltgy-gy, sbblk
sft, v calc





WT IN 10.50/ OUT 10.50
VIS IN 34/ OUT 34

6627'
90.7°
M 267.7°
D 5756.76'

MR.L: gy-gybrn, sme dkgy, sbblky-spply, gt
-mot tex, bnd, sft, v calc, abnt calc incl,
abnt bent, occ dism pyr, abnt fos frag
CHK: ltgy-gy, sbblky, mot-wxy tex, v mrlly,
sft, v calc

MD 6722'
INC 90.4°
AZM 267.7°
TVD 5755.85'

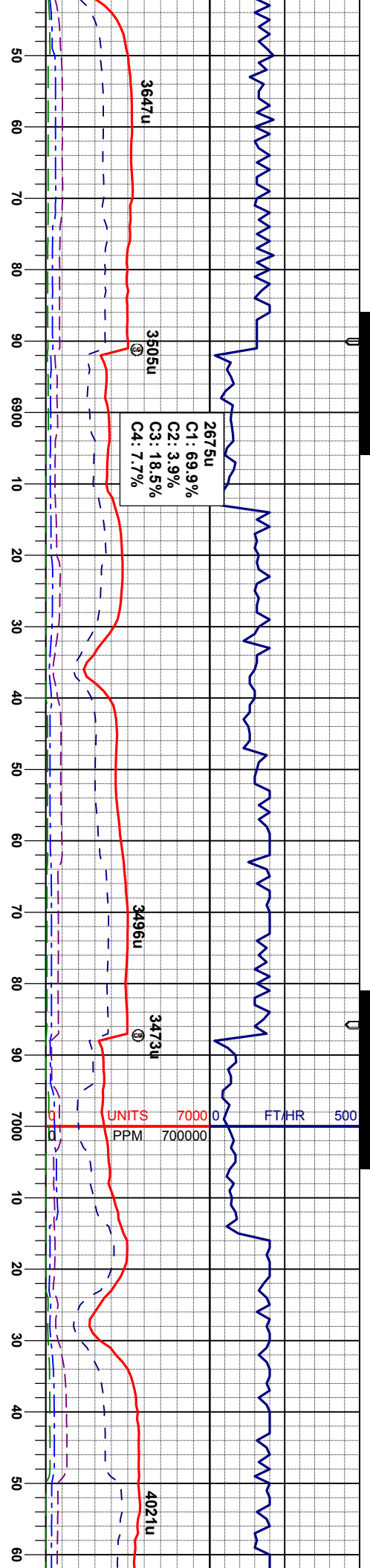
MR.L: gy-gybrn, sme dkgy, sbblky-spply, gt
-mot tex, bnd, sft - mod firm, v calc, occ
calc incl, abnt bent, occ dism pyr, tr fos frag
CHK: ltgy-gy, sbblky, mot-wxy tex, v mrlly,
sft - mod firm, v calc

MR.L: gy-gybrn, sme dkgy, sbblky-spply, gt
-mot tex, bnd, sft - mod firm, v calc, occ
calc incl, abnt bent, occ dism pyr, tr fos frag
CHK: ltgy-gy, sbblky, mot-wxy tex, v mrlly,
sft - mod firm, v calc

MD 6817'
INC 89.9°
AZM 267.9°
TVD 5755.60'

MR.L: gy-gybrn, sme dkgy, sbblky-spply, gt
-mot tex, bnd, sft - mod firm, v calc, occ
calc incl, abnt bent, occ dism pyr, tr fos frag
CHK: ltgy-gy, sbblky, mot-wxy tex, v mrlly,
sft - mod firm, v calc





WT IN 10.55/ OUT 10.55
VIS IN 33/ OUT 33

WT IN 10.60/ OUT 10.60
VIS IN 33/ OUT 33

MD 7006'
INC 90.8°
AZM 270.7°
TVD 5757.16'

MD 6911'
INC 88.7°
AZM 268.1°
TVD 5756.75'

MR.L: gy-gybrn, sme dkgy, sbblky-spply, gt
-mot tex, bnd, sft - mod firm, v calc, occ
calc incl, abnt bent, occ dism pyr, tr fos frag
CHK: ltgy-gy, sbblky, mot-wxy tex, v mrlly,
sft - mod firm, v calc

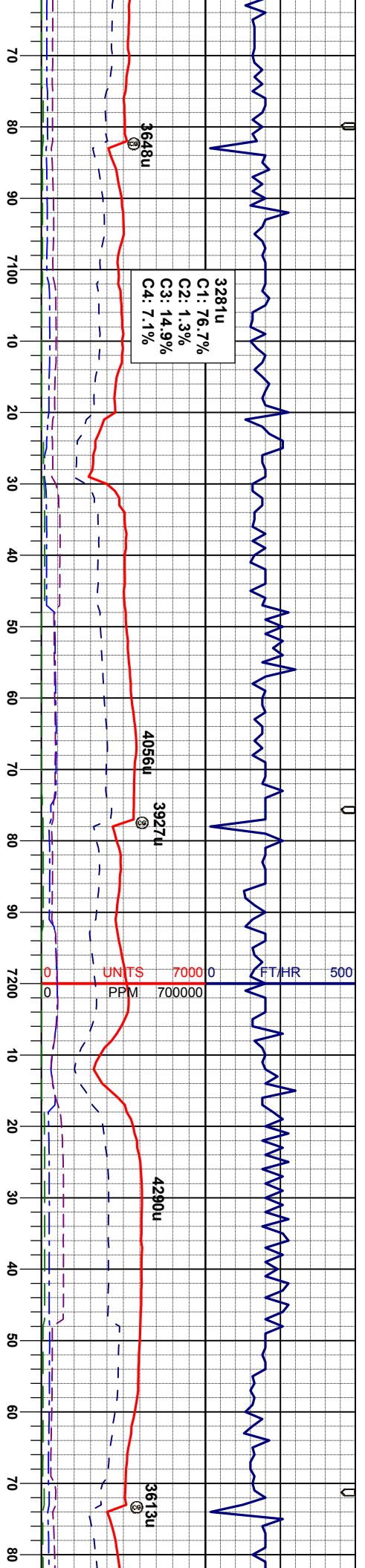
MR.L: gy-gybrn, sme dkgy, sbblky-spply, gt
-mot tex, bnd, sft - mod firm, v calc, tr calc
incl, tr bent, tr pyr
CHK: ltgy-gy, sbblky, mot-wxy tex, v mrlly,
sft - mod firm, v calc

MR.L: gy-gybrn, sme dkgy, sbblky-spply, gt
-mot tex, bnd, sft - mod firm, v calc, tr calc
incl, abnt bent, tr pyr
CHK: ltgy-gy, sbblky, mot-wxy tex, v mrlly,
sft - mod firm, v calc

MR.L: gy-gybrn, sme dkgy, sbblky-spply, gt
-mot tex, bnd, sft - mod firm, v calc, tr calc
incl
BENT: ltgy-ltbrn, spply-plty, sft- firm, gt-sdy
tex, dul lstr, com pyr strg, non calc
CHK: ltgy, sbblky, mot-wxy tex, v mrlly, sft -
mod firm, v calc

MR.L: gy
mot-bnd
incl
CHK: ltgy
mod firm
BENT: lt
tex, dul





MD 7101'
INC 90.6°
AZM 270.7°
TVD 5756.00'

MD 7196'
INC 89.9°
AZM 270.3°
TVD 5755.58'

gybrn, sme dkgy, sbblky-sbply,
tex, sft - mod firm, v calc, tr calc
gy-brn, sme dkgy, sbblky-sbply,
v, sbblky, mot tex, smwt mrlly, sft -
v calc
gy-lbrn, sbply-pty, sft- firm, gl-sdy
str, tr pyr strg, non calc

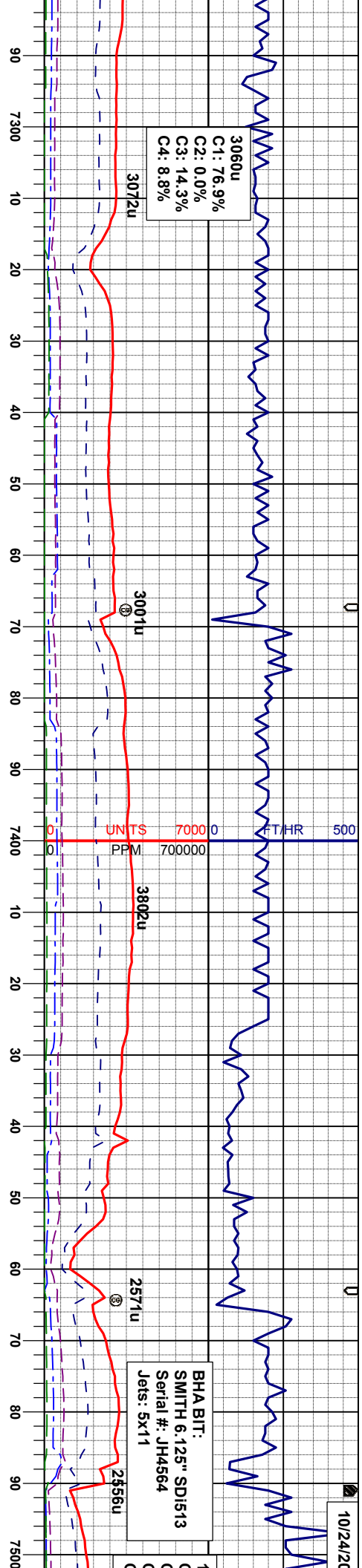
MRL: gy-gybrn, sme dkgy, sbblky-sbply,
mot-bnd tex, sft - mod firm, v calc, tr calc
incl, abnt bent, sme w/ pyr strg, tr fos frag
CHK: lgy, sbblky, mot tex, smwt mrlly, sft -
mod firm, v calc

MRL: gy-gybrn, sme dkgy, sbblky-sbply,
mot-bnd tex, sft - mod firm, v calc, tr calc
incl, abnt bent, sme w/ pyr strg, tr fos frag
CHK: lgy, sbblky, mot tex, smwt mrlly, sft -
mod firm, v calc

MRL: gy-gybrn, sme dkgy, sbblky-sbply,
mot-bnd tex, sft - mod firm, v calc, tr calc
incl, abnt bent, sme w/ pyr strg, tr fos frag
CHK: lgy, sbblky, mot tex, smwt mrlly, sft -
mod firm, v calc

MRL: gy-gybrn, sme dkgy, sbblky-sbply,
mot-bnd tex, sft - mod firm, v calc, tr calc
incl, sme bent, tr fos frag
CHK: lgy, sbblky, mot tex, smwt mrlly, sft -
mod firm, v calc





3060u
C1: 76.9%
C2: 0.0%
C3: 14.3%
C4: 8.8%

BHA BIT:
SMITH 6.125" SD1513
Serial #: JH4564
Jets: 5x11

WT IN 10.50/ OUT 10.50
VIS IN 34/ OUT 34

WT IN 10.50/ OUT 10.50
VIS IN 34/ OUT 34

MD 7291'
INC 89.8°
AZM 270.5°
TVD 5755.83'

MD 7386'
INC 89.3°
AZM 270.0°
TVD 5756.58'

MD 7481'
INC 89.4°
AZM 269.5°
TVD 5757.66'

MRL: gy-gy/brn, sme dkgy, sbblky-sbply,
mot-bnd tex, sft - mod firm, v calc, tr calc
incl, abnt bent, sme w/ pyr stfg, tr fos frag
CHK: lgy, sbblky, mot tex, rthy lstr, smwt
mly, sft - mod firm, v calc

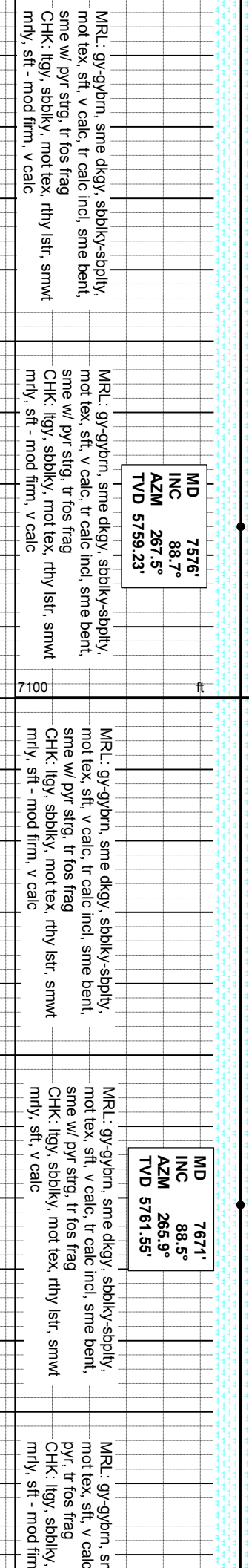
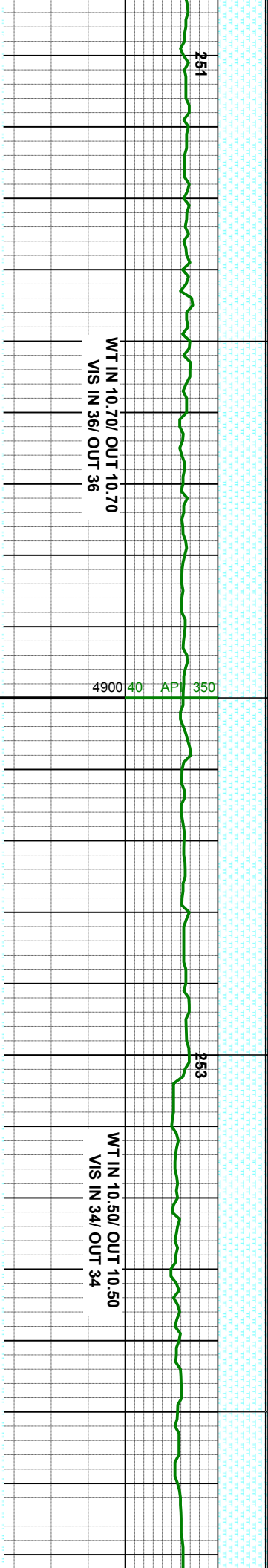
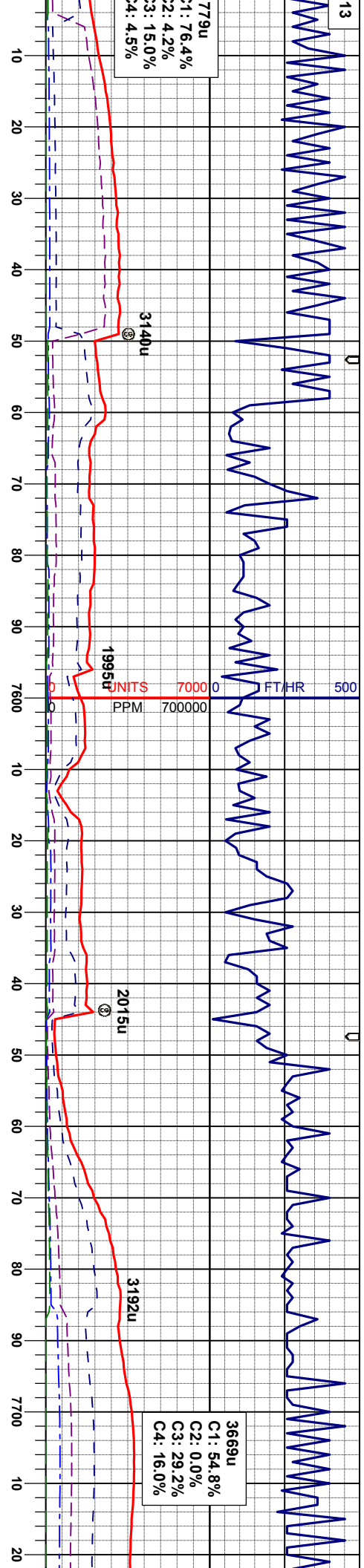
MRL: gy-gy/brn, sme dkgy, sbblky-sbply,
mot tex, sft- mod firm, v calc, tr calc incl,
sme bent, sme w/ pyr stfg, tr fos frag
CHK: lgy, sbblky, mot tex, rthy lstr, smwt
mly, sft - mod firm, v calc

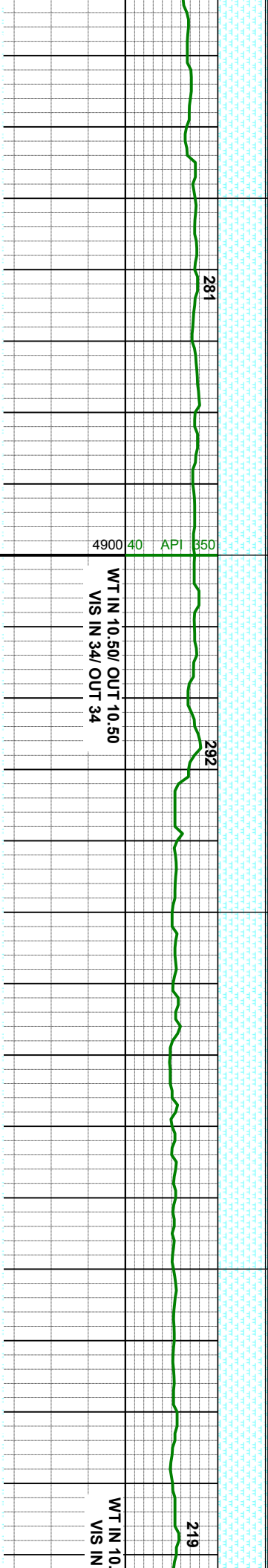
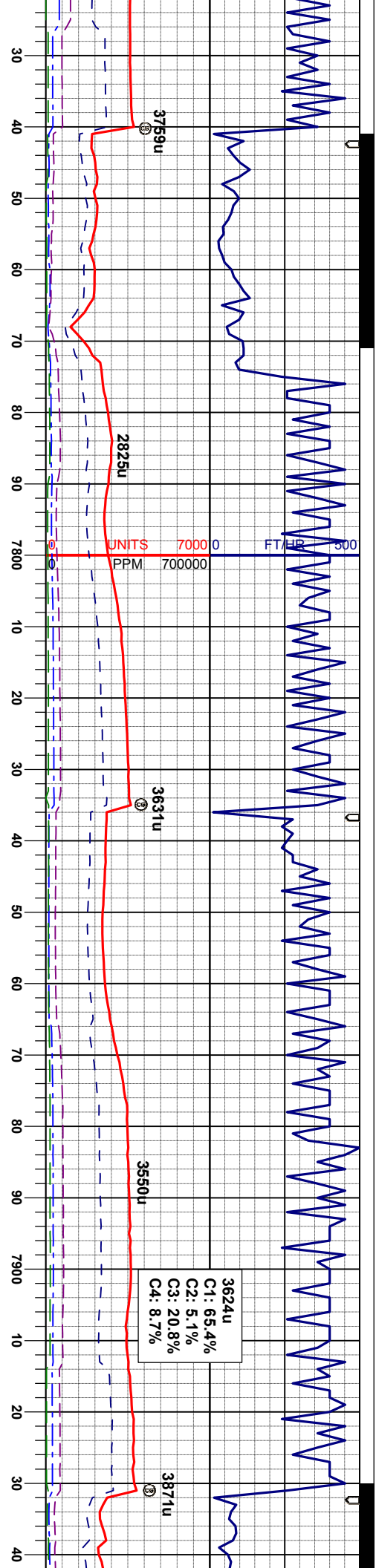
MRL: gy-gy/brn, sme dkgy, sbblky-sbply,
mot tex, sft- mod firm, v calc, tr calc incl,
sme bent, sme w/ pyr stfg, tr fos frag
CHK: lgy, sbblky, mot tex, rthy lstr, smwt
mly, sft - mod firm, v calc

MRL: gy-gy/brn, sme dkgy, sbblky-sbply,
mot tex, sft, v calc, tr calc incl, sme bent,
sme w/ pyr stfg, tr fos frag
CHK: lgy, sbblky, mot tex, rthy lstr, smwt
mly, sft - mod firm, v calc



13





MD 7766'
INC 89.5°
AZM 266.3°
TVD 5763.21'

MRL: gy-gybrn, sme dkgy, sbblky-sbply,
mot tex, sft, v calc, tr calc incl, occ bent, tr
pyr, tr fos frag
CHK: lgy, sbblky, mot tex, rthy lstr, smwt
mrl, sft - mod firm, v calc

MD 7861'
INC 89.0°
AZM 265.8°
TVD 5764.46'

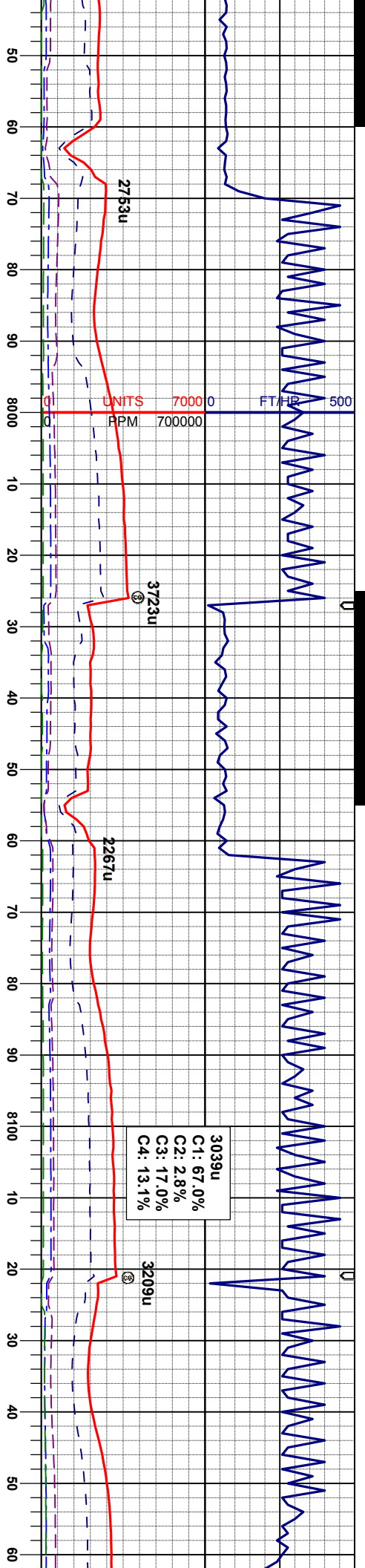
MRL: gy-gybrn, sme dkgy, sbblky-sbply,
mot tex, sft, v calc, tr calc incl, occ bent, tr
pyr, tr fos frag
CHK: lgy, sbblky, mot tex, rthy lstr, smwt
mrl, sft - mod firm, v calc

3624u
C1: 65.4%
C2: 5.1%
C3: 20.8%
C4: 8.7%

WT IN 10.50/ OUT 10.50
VIS IN 34/ OUT 34

WT IN 10
VIS IN





55/ OUT 10.55
35/ OUT 35

4900 40 AFI 350

WT IN 10.60/ OUT 10.60
VIS IN 35/ OUT 35

214

MD 7956'
INC 88.9°
AZM 267.7°
TVD 5766.20'

MRL: gy-gybrn, sme dkgy, sbblky-sbply,
mot tex, sft- mod firm, v calc, tr calc incl,
occ bent, tr pyr, tr fos frag
CHK: lgy, sbblky, mot tex, rthy lstr, smwt
mrly, sft - mod firm, v calc

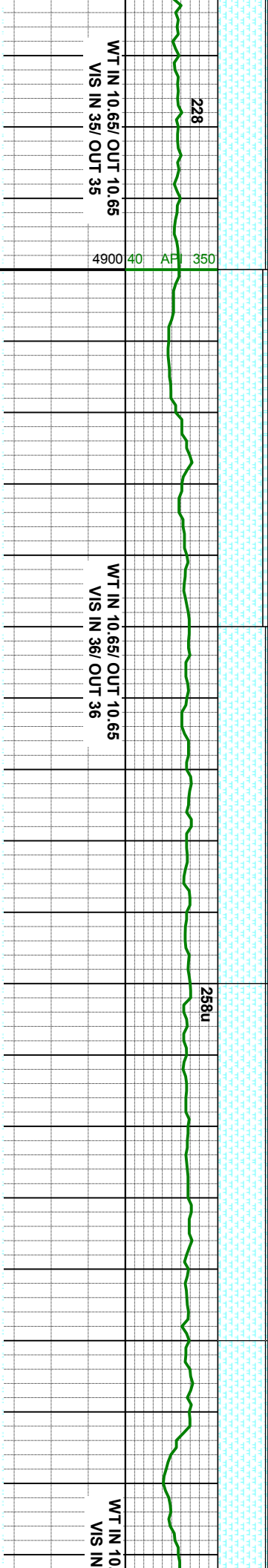
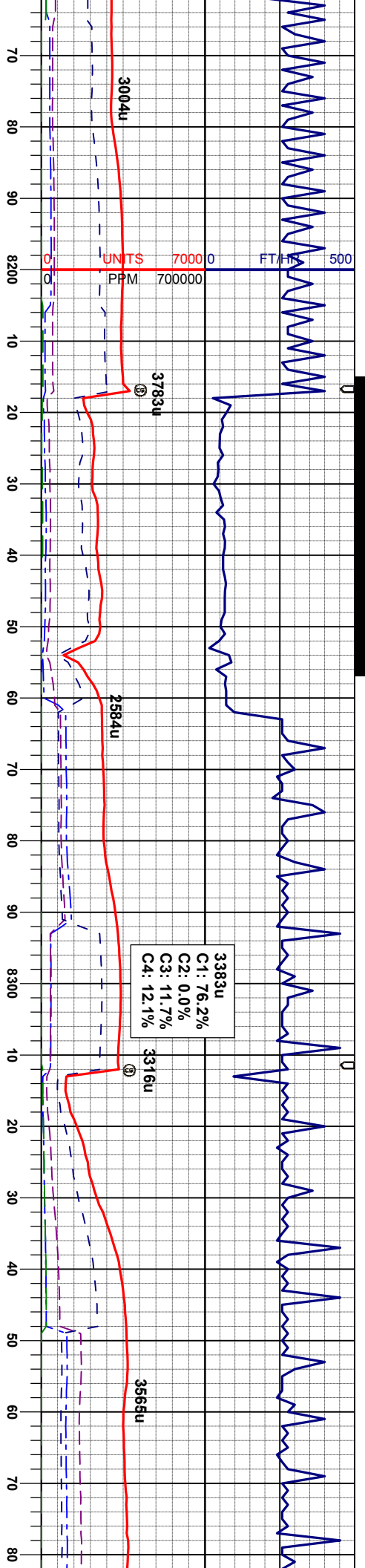
MD 8050'
INC 90.3°
AZM 270.3°
TVD 5766.85'

MRL: gy-gybrn, sme dkgy, sbblky-sbply,
mot tex, sft- mod firm, v calc, tr calc incl,
occ bent, tr pyr, tr fos frag
CHK: lgy, sbblky, mot tex, rthy lstr, smwt
mrly, sft - mod firm, v calc

MD 8145'
INC 89.2°
AZM 267.0°
TVD 5767.27'

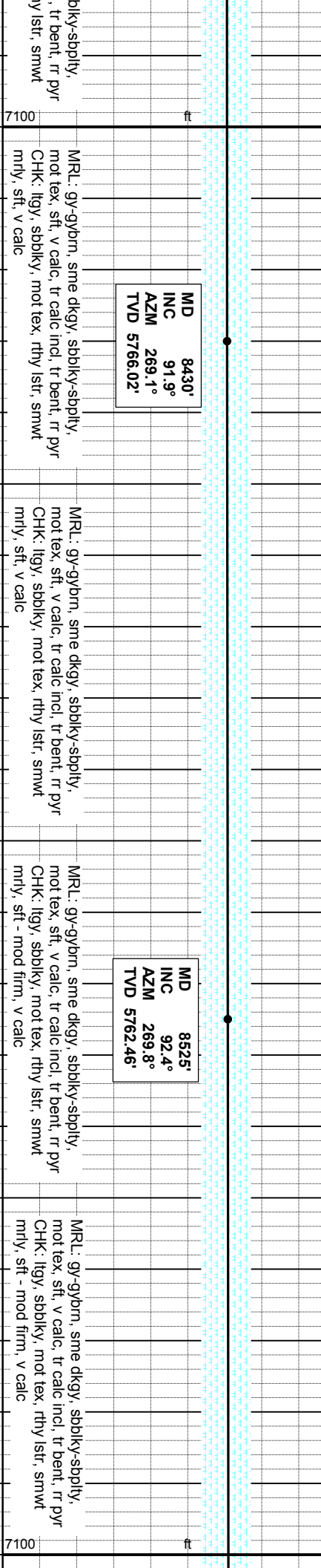
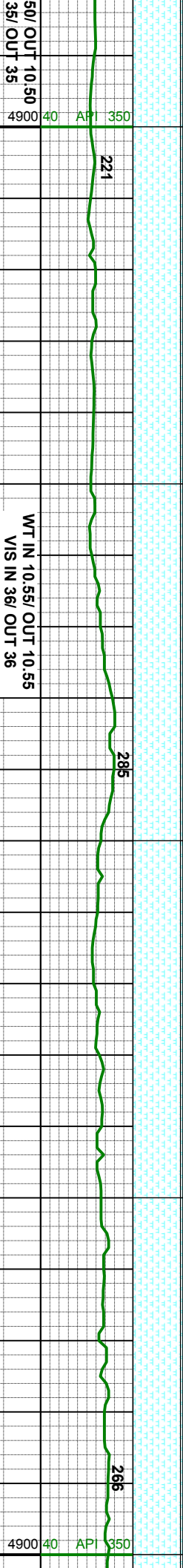
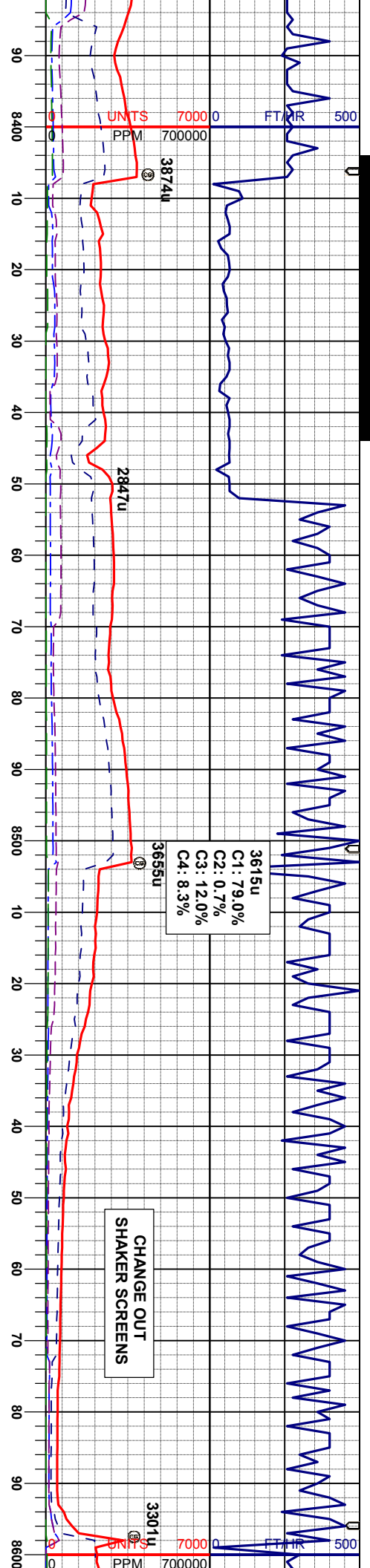
MRL: gy-gybrn, sme dkgy, sbblky-sbply,
mot tex, sft- mod firm, v calc, tr calc incl,
occ bent, tr pyr, tr fos frag
CHK: lgy, sbblky, mot tex, rthy lstr, smwt
mrly, sft - mod firm, v calc





WT IN 10.65/ OUT 10.65 VIS IN 35/ OUT 35	WT IN 10.65/ OUT 10.65 VIS IN 36/ OUT 36	WT IN 10.65/ OUT 10.65 VIS IN 36/ OUT 36	WT IN 10.65/ OUT 10.65 VIS IN 36/ OUT 36	WT IN 10.65/ OUT 10.65 VIS IN 36/ OUT 36
MD 8240' INC 90.0° AZM 268.6° TVD 5767.93'	MD 8335' INC 90.2° AZM 268.1° TVD 5767.76'	MD 8335' INC 90.2° AZM 268.1° TVD 5767.76'	MD 8335' INC 90.2° AZM 268.1° TVD 5767.76'	MD 8335' INC 90.2° AZM 268.1° TVD 5767.76'
MRL: gy-gybrn, sme dkgy, sbblky-sbply, mot tex, sft, v calc, tr calc incl, occ bent, tr pyr, tr fos frag, CHK: lgy, sbblky, mot tex, rthy lstr, smwt mly, sft, v calc	MRL: gy-gybrn, sme dkgy, sbblky-sbply, mot tex, sft, v calc, tr calc incl, occ bent, tr pyr, tr fos frag, CHK: lgy, sbblky, mot tex, rthy lstr, smwt mly, sft, v calc	MRL: gy-gybrn, sme dkgy, sbblky-sbply, mot tex, sft, v calc, tr calc incl, occ bent, tr pyr, tr fos frag, CHK: lgy, sbblky, mot tex, rthy lstr, smwt mly, sft, v calc	MRL: gy-gybrn, sme dkgy, sbblky-sbply, mot tex, sft, v calc, tr calc incl, occ bent, tr pyr, tr fos frag, CHK: lgy, sbblky, mot tex, rthy lstr, smwt mly, sft, v calc	MRL: gy-gybrn, sme dkgy, sbblky-sbply, mot tex, sft, v calc, tr calc incl, occ bent, tr pyr, tr fos frag, CHK: lgy, sbblky, mot tex, rthy lstr, smwt mly, sft, v calc





MD 8430'
INC 91.9°
AZM 269.1°
TVD 5766.02'

MD 8525'
INC 92.4°
AZM 269.8°
TVD 5762.46'

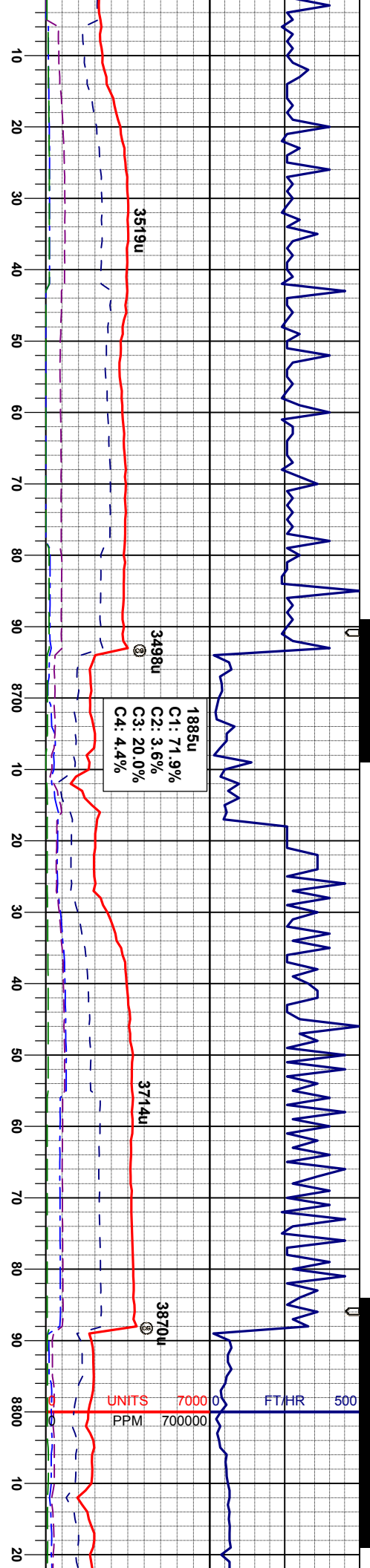
MRL: gy-gy/brn, sme dkgy, sbblky-sbply,
mot tex, sft, v calc, tr calc incl, tr bent, rr pyr
CHK: lgy, sbblky, mot tex, rthy lstr, smwt
mnty, sft, v calc

MRL: gy-gy/brn, sme dkgy, sbblky-sbply,
mot tex, sft, v calc, tr calc incl, tr bent, rr pyr
CHK: lgy, sbblky, mot tex, rthy lstr, smwt
mnty, sft, v calc

MRL: gy-gy/brn, sme dkgy, sbblky-sbply,
mot tex, sft, v calc, tr calc incl, tr bent, rr pyr
CHK: lgy, sbblky, mot tex, rthy lstr, smwt
mnty, sft - mod firm, v calc

MRL: gy-gy/brn, sme dkgy, sbblky-sbply,
mot tex, sft, v calc, tr calc incl, tr bent, rr pyr
CHK: lgy, sbblky, mot tex, rthy lstr, smwt
mnty, sft - mod firm, v calc





WT IN 10.65/ OUT 10.65
VIS IN 37/ OUT 37

WT IN 10.50/ OUT 10.50
VIS IN 39/ OUT 39

MD 8619'
INC 92.1°
AZM 268.4°
TVD 5758.77'

MD 8714'
INC 91.4°
AZM 268.9°
TVD 5755.87'

MD 8809'
INC 90.5°
AZM 271.6°
TVD 5754.29'

MRL: gy-gybm, sme dky, sbblky-sbply,
mot tex, sl bnd, sft, v calc, tr calc incl, tr
bent, rr pyr
CHK: ilgy, sbblky, mot tex, rthy lstr, smwt
mrl, sft - mod firm, v calc

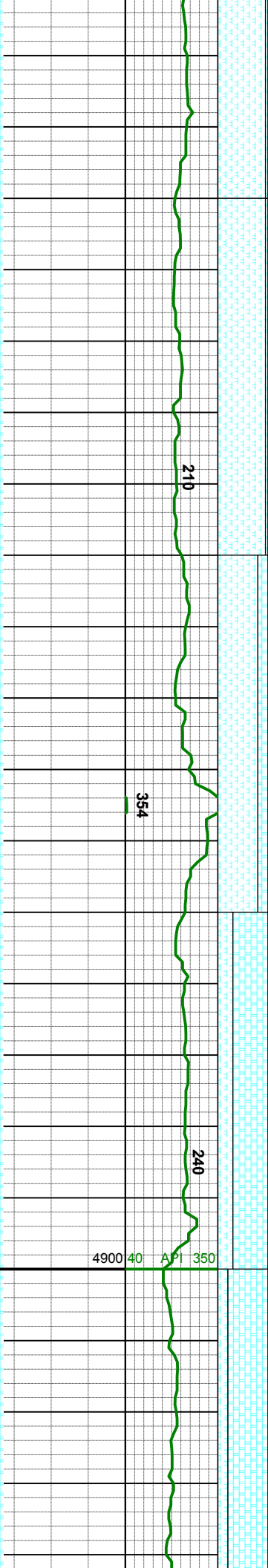
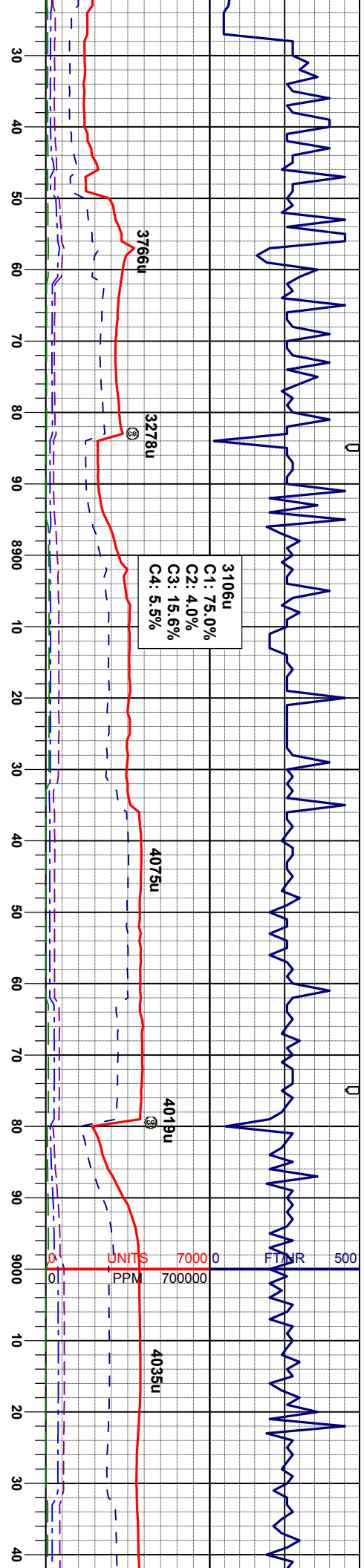
MRL: gy-gybm, sme dky, sbblky-sbply,
mot tex, sl bnd, sft, v calc, tr calc incl, tr
bent, rr pyr, tr fos frag
CHK: ilgy, sbblky, mot tex, rthy lstr, smwt
mrl, sft - mod firm, v calc

MRL: gy-gybm, sme dky, sbblky-sbply,
mot tex, sl bnd, sft, v calc, tr calc incl, tr
bent, rr xl pyr, tr fos frag
CHK: ilgy, sbblky, mot tex, sme wxy, rthy
lstr, smwt mrl, sft - mod firm, v calc

MRL: gy-gybm, sme dky, sbblky-sbply,
mot tex, sl bnd, sft, v calc, tr calc incl, tr
bent, rr xl pyr, tr fos frag
CHK: ilgy, sbblky, mot tex, sme wxy, rthy
lstr, smwt mrl, sft - mod firm, v calc

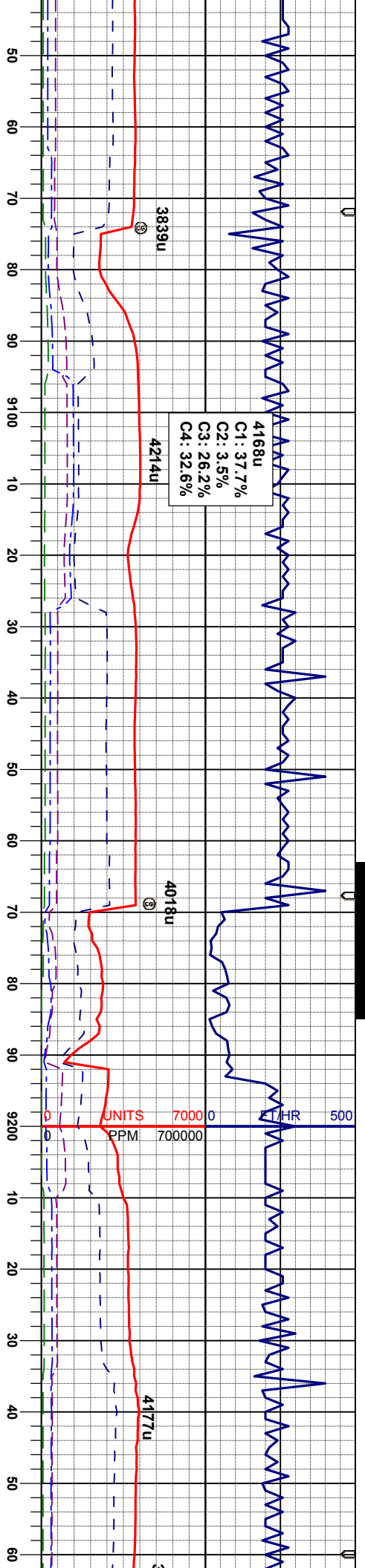
7100





<p>MD 8904' INC 90.0° AZM 270.7° TVD 5753.88'</p> <p>MRL: gy-gybrn, sme dkgy, sbblky-sbply, mot tex, bnd, sft, v calc, abnt calc incl, sme bent w/ pyr strg, tr fos frag CHK: llyg, sbblky, mot tex, rthy lstr, v mrlly, sft - mod firm, v calc, rr calc incl</p>	<p>MD 8904' INC 90.0° AZM 270.7° TVD 5753.88'</p> <p>MRL: gy-gybrn, sme dkgy, sbblky-sbply, mot tex, bnd, sft, v calc, abnt calc incl, sme bent w/ pyr strg, tr fos frag CHK: llyg, sme crm, sbblky, mot tex, rthy lstr, v mrlly, sft - mod firm, v calc, rr calc incl</p>	<p>MD 8998' INC 90.5° AZM 270.2° TVD 5753.47'</p> <p>CHK: llyg-crm, sbblky, mot-wxy tex, rthy lstr, v mrlly, sft - mod firm, v calc, rr calc incl</p> <p>MRL: gy-gybrn, sme dkgy, sbblky-sbply, mot tex, bnd, sft, v calc, abnt calc incl, tr fos frag</p>	<p>MD 8998' INC 90.5° AZM 270.2° TVD 5753.47'</p> <p>CHK: llyg-crm, sbblky, mot-wxy tex, sft mod firm, v calc</p> <p>MRL: gy-gybrn, sme dkgy, sbblky-sbply, mot tex, bnd, sft, v chky, v calc, abnt calc incl, tr fos frag</p>
-----------------------------------------------------------------------------------------------------------------------------------------------------------------------------------------------------------------------------------------------------------------------------------	--------------------------------------------------------------------------------------------------------------------------------------------------------------------------------------------------------------------------------------------------------------------------------------------	------------------------------------------------------------------------------------------------------------------------------------------------------------------------------------------------------------------------------------------------------------------------	--------------------------------------------------------------------------------------------------------------------------------------------------------------------------------------------------------------------------------------------





4168u
C1: 37.7%
C2: 3.5%
C3: 26.2%
C4: 32.6%

3839u

4214u

4018u

4177u

UNITS 7000 0
PPM 700000

WT IN 10.60 OUT 10.60
VIS IN 37 OUT 37

MD 9093'
INC 90.8°
AZM 270.0°
TVD 5752.35'

MD 9188'
INC 88.7°
AZM 267.7°
TVD 5752.81'

CHK: lgy-cm, sbbly, mot-wxy tex, sft -
mod firm, v calc
MRL: gy-gybrn, sme dkgy, sbbly-sbply,
mot tex, bnd, sft, v chky, v calc, abnt calc
incl, tr fos frag

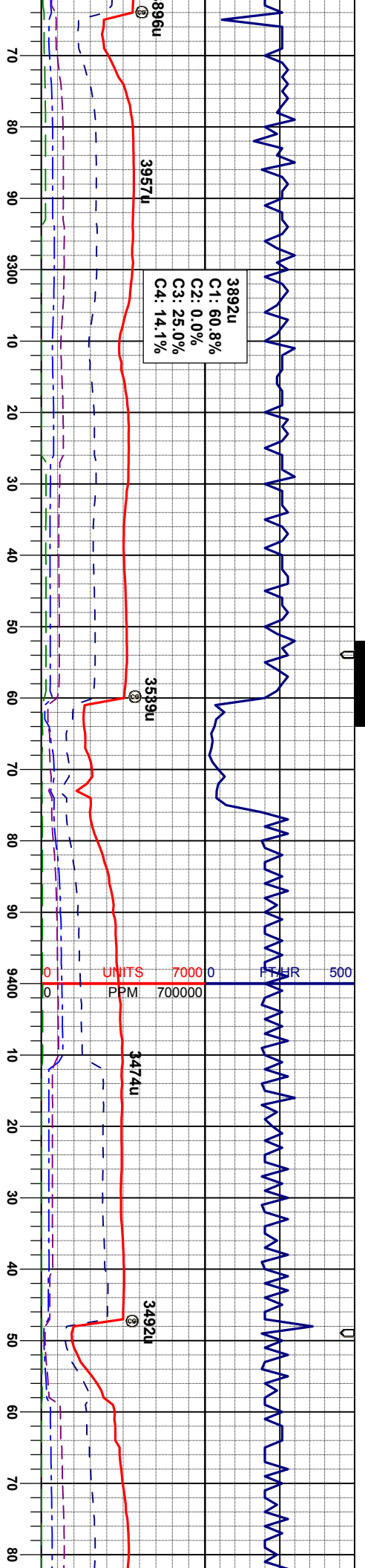
CHK: lgy-cm, sbbly, mot-wxy tex, sft -
mod firm, v calc
MRL: gy-gybrn, sme dkgy, sbbly-sbply,
mot tex, bnd, sft, v chky, v calc, abnt calc
incl, tr fos frag

CHK: lgy-cm, sbbly, mot-wxy tex, sft -
mod firm, smwt mly, v calc
MRL: gy-gybrn, sme dkgy, sbbly-sbply,
mot tex, bnd, sft, v calc, abnt calc incl, tr fos
frag, sme bent w/ pyr strg

CHK: lgy-cm, sbbly, mot-wxy tex, sft -
mod firm, smwt mly, v calc
MRL: gy-gybrn, sme dkgy, sbbly-sbply,
mot tex, bnd, sft, v calc, abnt calc incl, tr fos
frag, sme bent w/ pyr strg

CHK: lgy-cm, sbbly, mot-wxy tex, sft -
mod firm, smwt mly, v calc
MRL: gy-gybrn, sme dkgy, sbbly-sbply,
mot tex, bnd, sft, v calc, abnt calc incl, tr fos
frag, sme bent w/ pyr strg





N 10.50° OUT 10.50
S IN 35° OUT 35

MD 9283'
INC 89.8°
AZM 268.1°
TVD 5754.05'

gy-crm, sbblky, mot-wxy tex, sft -
smwt mrlly, v calc
gybrn, sme dkg, sbblky-sbply,
bnd, sft, v calc, abnt calc incl, tr fos
a bent w/ pyr strg

MRL: gy-gybrn, sme dkg, sbblky-sbply,
mot tex, bnd, sft, v calc, abnt calc incl, tr fos
frag, sme bent w/ pyr strg
CHK: lgy-crm, sbblky, mot-wxy tex, sft -
mod firm, smwt mrlly, v calc

MD 9378'
INC 88.1°
AZM 267.4°
TVD 5755.79'

MRL: gy-gybrn, sme dkg, sbblky-sbply,
mot tex, bnd, sft, v calc, abnt calc incl, tr fos
frag, sme bent w/ pyr strg
CHK: lgy-crm, sbblky, mot tex, rthy lstr, sft
- mod firm, smwt mrlly, v calc

MD 9472'
INC 86.6°
AZM 264.0°
TVD 5760.14'

MRL: gy-gybrn, sme dkg, sbblky-sbply,
mot tex, bnd, sft, v calc, abnt calc incl, abnt
fos frag, tr bent w/ pyr strg, tr xl pyr
CHK: lgy-crm, sbblky, mot tex, rthy lstr, sft
- mod firm, v mrlly, v calc

MRL: gy-gybrn, sme dkg, sbblky-sbply,
mot tex, bnd, sft, v calc, abnt
fos frag, tr bent w/ pyr strg, r
CHK: lgy-crm, sbblky, mot t
- mod firm, v mrlly, v calc



