

The Road to Excellence Starts with Safety

The Road to Excellence Starts With Safety			
Sold To #: 300721	Ship To #: 3107324	Quote #:	Sales Order #: 900764835
Customer: WPX ENERGY ROCKY MOUNTAIN LLC-EBUS		Customer Rep: BRUNK, MIKE	
Well Name: RWF	Well #: 421-35	API/UWI #:	
Field: GARND VAILLEY	City (SAP): RIFLE	County/Parish: Garfield	State: Colorado
Contractor: CYCLONE 17	Rig/Platform Name/Num: 17		
Job Purpose: Cement Surface Casing			
Well Type: Development Well		Job Type: Cement Surface Casing	
Sales Person: MAYO, MARK	Srv Supervisor: BRENNECKE, ANDREW	MBU ID Emp #: 486345	

Job Personnel

HES Emp Name	Exp Hrs	Emp #	HES Emp Name	Exp Hrs	Emp #	HES Emp Name	Exp Hrs	Emp #
BRENNECKE, ANDREW Bailey	10.0	486345	CAMPBELL, DAVID Arthur	10	544403	CASTILLO, FRANCISCO P	9	513620
JENSEN, SHANE	9.0	441759	LINN, PAUL Andrew	9	479143	PONDER, THOMAS Lynn	10	427112
WARDELL, STEVEN	9	549567						

Equipment

HES Unit #	Distance-1 way	HES Unit #	Distance-1 way	HES Unit #	Distance-1 way	HES Unit #	Distance-1 way
10867304	60 mile	10867531	60 mile	10872429	60 mile	10995025	60 mile
11071559	60 mile	11583931	60 mile	11808847	60 mile		

Job Hours

Date	On Location Hours	Operating Hours	Date	On Location Hours	Operating Hours	Date	On Location Hours	Operating Hours
9/25/2013	19	3						

TOTAL Total is the sum of each column separately

Job				Job Times			
Formation Name	Top	Bottom		Date	Time	Time Zone	
Formation Depth (MD)				Called Out	24 - Sep - 2013	22:00	MST
Form Type		BHST		On Location	25 - Sep - 2013	03:00	MST
Job depth MD	1163. ft	Job Depth TVD	1163. ft	Job Started	25 - Sep - 2013	14:02	MST
Water Depth		Wk Ht Above Floor	3. ft	Job Completed	25 - Sep - 2013	20:23	MST
Perforation Depth (MD)	From	To		Departed Loc	25 - Sep - 2013	22:30	MST

Well Data

Description	New / Used	Max pressure psig	Size in	ID in	Weight lbm/ft	Thread	Grade	Top MD ft	Bottom MD ft	Top TVD ft	Bottom TVD ft
-------------	------------	-------------------	---------	-------	---------------	--------	-------	-----------	--------------	------------	---------------

Tools and Accessories

Type	Size	Qty	Make	Depth	Type	Size	Qty	Make	Depth	Type	Size	Qty	Make
Guide Shoe	9.625	1	WTF	1148.33	Packer					Top Plug	9.625	1	HES
Float Shoe					Bridge Plug					Bottom Plug			
Float Collar	9.625	1	WTF	1104.53	Retainer					SSR plug set			
Insert Float										Plug Container	9.625	1	HES
Stage Tool										Centralizers			

Miscellaneous Materials

Gelling Agt	Conc	Surfactant	Conc	Acid Type	Qty	Conc	%
Treatment Fld	Conc	Inhibitor	Conc	Sand Type	Size		Qty

Fluid Data

Stage/Plug #: 1									
Fluid #	Stage Type	Fluid Name	Qty	Qty uom	Mixing Density lbm/gal	Yield ft ³ /sk	Mix Fluid Gal/sk	Rate bbl/min	Total Mix Fluid Gal/sk

Stage/Plug #: 1

Cementing Job Summary

Stage/Plug #: 1									
Fluid #	Stage Type	Fluid Name	Qty	Qty uom	Mixing Density lbm/gal	Yield ft ³ /sk	Mix Fluid Gal/sk	Rate bbl/min	Total Mix Fluid Gal/sk
1	Fresh Water Spacer		20.00	bbl	.	.0	.0	.0	
2	VariCem GJI Lead Cement	VARICEM (TM) CEMENT (452009)	160.0	sacks	12.3	2.38	13.75		13.75
		13.75 Gal	FRESH WATER						
3	VariCem GJI Tail Cement	VERSACEM (TM) SYSTEM (452010)	160.0	sacks	12.8	2.11	11.75		11.75
		11.75 Gal	FRESH WATER						
4	Fresh Water Displacement		87.00	bbl	.	.0	.0	.0	
Calculated Values		Pressures		Volumes					
Displacement	86.9	Shut In: Instant		Lost Returns		Cement Slurry	140	Pad	
Top Of Cement	SURFACE	5 Min		Cement Returns	0	Actual Displacement	86.9	Treatment	
Frac Gradient		15 Min		Spacers	20	Load and Breakdown		Total Job	247.1
Rates									
Circulating	RIG	Mixing	8	Displacement	10	Avg. Job	8		
Cement Left In Pipe	Amount	43.8 ft	Reason	Shoe Joint					
Frac Ring # 1 @	ID	Frac ring # 2 @	ID	Frac Ring # 3 @	ID	Frac Ring # 4 @	ID		
The Information Stated Herein Is Correct				Customer Representative Signature					

The Road to Excellence Starts with Safety

Sold To #: 300721	Ship To #: 3107324	Quote #:	Sales Order #: 900764835
Customer: WPX ENERGY ROCKY MOUNTAIN LLC-EBUS	Customer Rep: BRUNK, MIKE		
Well Name: RWF	Well #: 421-35	API/UWI #:	
Field: GARND VAILLEY	City (SAP): RIFLE	County/Parish: Garfield	State: Colorado
Legal Description:			
Lat:		Long:	
Contractor: CYCLONE 17	Rig/Platform Name/Num: 17		
Job Purpose: Cement Surface Casing		Ticket Amount:	
Well Type: Development Well	Job Type: Cement Surface Casing		
Sales Person: MAYO, MARK	Srv Supervisor: BRENNECKE, ANDREW	MBU ID Emp #: 486345	

Activity Description	Date/Time	Cht #	Rate bbl/min	Volume bbl		Pressure psig		Comments
				Stage	Total	Tubing	Casing	
Call Out	09/24/2013 22:00							CALL OUT AT 22:00 HRS, ON LOCATION TIME AT 06:00 HRS
Pre-Convoy Safety Meeting	09/25/2013 01:00							ALL HES PERSONEL
Crew Leave Yard	09/25/2013 01:10							
Arrive At Loc	09/25/2013 03:00							RIG WAS STILL DRILLING. STATIONED TRUCK AT THE ENTRANCE OF LOCATION UNTIL RIG WAS DONE DRILLING AND RUNNING CASING DUE TO VERY SMALL LOCATION.
Assessment Of Location Safety Meeting	09/25/2013 12:00							ALL HES PERSONEL
Rig-Up Equipment	09/25/2013 13:00							1-ELITE, 1-660 BULK TRUCKS, 2" PUMPING IRON, 9.625" PLUG CONTAINER AND QUICKLATCH
Rig-Up Completed	09/25/2013 13:30							
Pre-Job Safety Meeting	09/25/2013 13:45							ALL HES PERSONEL AND RIG CREW
Start Job	09/25/2013 14:01							TD-1163', TP-1148.33', SJ-43.80', FC-1104.53', OH-13.5, CSG-9.625", 32.3#, H-40, MUD-9.7 PPG, VISC-55
Pump Water	09/25/2013 14:02		2	2			146.0	FILL LINES

Activity Description	Date/Time	Cht #	Rate bbl/min	Volume bbl		Pressure psig		Comments
				Stage	Total	Tubing	Casing	
Pressure Test	09/25/2013 14:09		0.2	0.2				PRESSURE TEST LINES WITH 3852 PSI
Pump Spacer	09/25/2013 14:14		2	20			104.0	FRESH WATER
Pump Lead Cement	09/25/2013 14:28		8	67.8			360.0	160 SKS, 12.3 PPG, 2.38 FT3/SK, 13.75 GAL/SK,
Pump Tail Cement	09/25/2013 14:35		8	60			390.0	160 SKS, 12.8 PPG, 2.11 FT3/SK, 11.75 GAL/SK,
Shutdown	09/25/2013 14:43							
Drop Plug	09/25/2013 14:45							PLUG DROP VERIFIED BY CUSTOMER
Pump Displacement	09/25/2013 14:47		10	77			550.0	FRESH WATER, WASHED UP MIXING TUB WITH FIRST 10 BBLS.
Slow Rate	09/25/2013 14:58		2	10			276.0	
Bump Plug	09/25/2013 15:03			87			826.0	
Check Floats	09/25/2013 15:05							FLOATS HELD/ .5 BBLS FLOW BACK TO DISPLACEMENT TANK
End Job	09/25/2013 15:08							GOOD RETURNS THROUGH OUT JOB. NO CEMENT RETURNS TO SURFACE, ORDERED TOP OUT.
Start Job	09/25/2013 20:02							200 SKS TOP OUT CEMENT BROUGHT TO LOCATION. CEMENT ARRIVED AT 19:45.
Pump Water	09/25/2013 20:08		0.5	0.5			34.0	MADE SURE LINES WERE CLEAR PUMPED FRESH WATER
Pump Cement	09/25/2013 20:09		2	12.1			35.0	65 SKS, 15.8 PPG, 1.15 FT3/SK, 5.01 GAL/SK
Pump Water	09/25/2013 20:22		2	5			35.0	CLEARED CEMENT FROM LINES
End Job	09/25/2013 20:23							BROUGHT CEMENT BACK TO SURFACE WASHED UP TRUCK INTO CELLER

HALLIBURTON

Cementing Job Log

Activity Description	Date/Time	Cht #	Rate bbl/ min	Volume bbl		Pressure psig		Comments
				Stage	Total	Tubing	Casing	
Other	09/25/2013 20:25							THANK YOU FOR CHOOSING HALLIBURTON ANDREW BRENNECKE & CREW

Sold To # : 300721

Ship To # :3107324

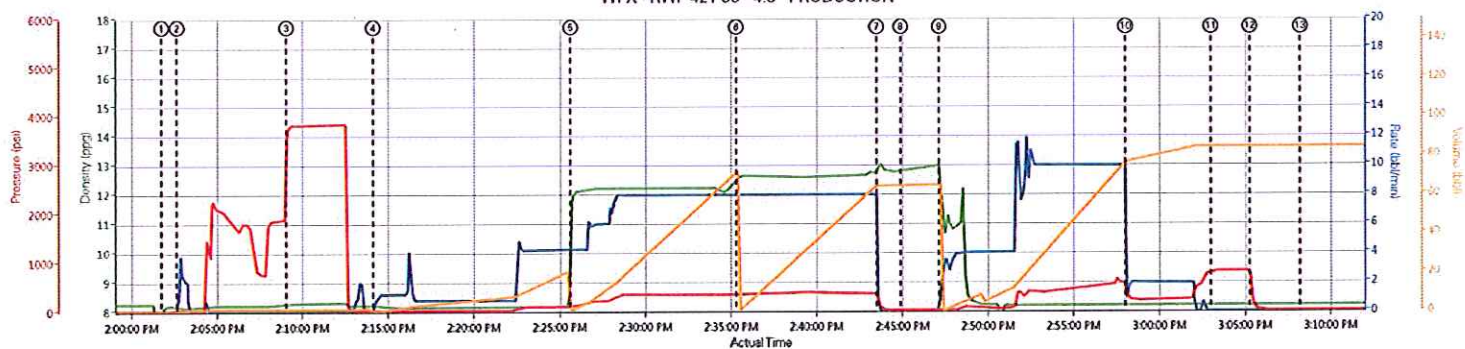
Quote # :

Sales Order # : 900764835

SUMMIT Version: 7.3.0106

Tuesday, October 01, 2013 12:47:00

WPX - RWF 421-35 - 4.5" PRODUCTION



DH Density (ppg) Comb Pump Rate (bbl/min) PS Pump Press (psi) Pump Sig Tot (bbl)

① Start Job 8 17,0,15,0 ④ Pump Spacer 1 8 23,0 8,24,0 1 ⑦ Shut Down 12 86,0,143,0,0 ⑩ Slow Rate 8 17,1 5,288,10 9 ⑬ End Job 8 21,0,17,04,5 ⑯ Pump Cement 15 87,2,29,1
 ② Prime Pumps 8 17,1 2,32,0 1 ⑤ Pump Lead Cement 11 55,4 2,128,9 9 ⑧ Drop Top Plug 12 81,0,23,0 ⑪ Pump Plug 9 2,0,818,04 5 ⑭ Start Job 8 21,0,17,04,5 ⑰ Pump Spacer 1 8 23,0,8,24,0 1
 ③ Test Lines 8 23,0,3733,1 3 ⑥ Pump Tail Cement 12 59,6,365,72 4 ⑨ Pump Displacement 12 5,1 7,28,05 1 ⑫ Check Floats 9 21,0,447,04 0 ⑮ Prime Pumps 8 21,0,17,04,5 ⑱ End Job 8 21,0,17,04,5

▼ HALLIBURTON | iCem® Service

Created: 2013-09-25 13:45:25, Version: 20.458

Edit

Customer: WPX ENERGY ROCKY MOUNTAIN LLC-EBUS

Representative: AL DURBHOO

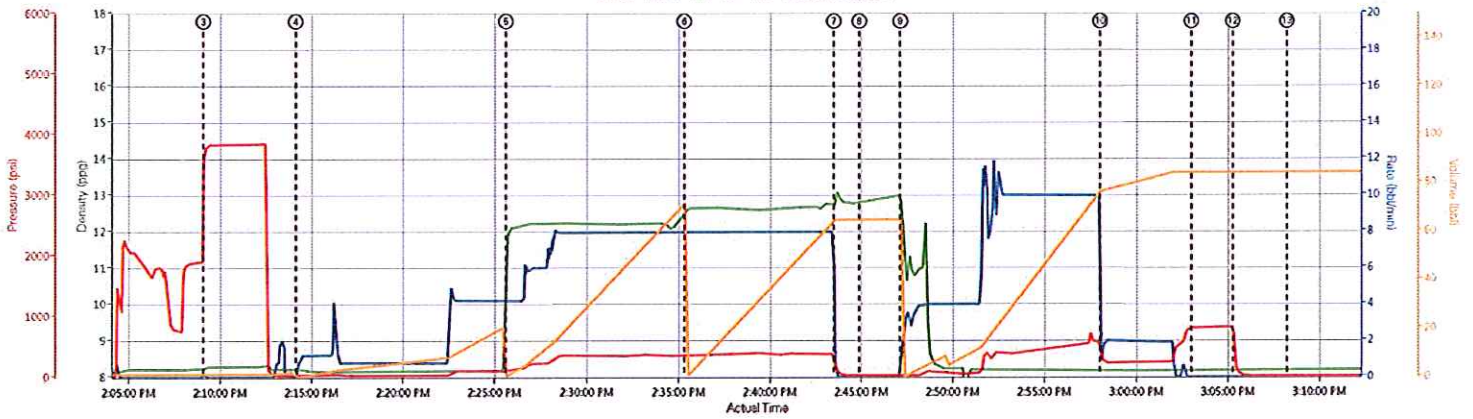
Job Date: 9/25/2013 1:48:08 PM

Sales Order #: 800764835

Well: RWF 421-35

ELITE#7: BRENNER/POUNDER

WPX - RWF 421-35 - 4.5" PRODUCTION



DH Density (ppg) Comb Pump Rate (bbl/min) PS Pump Press (psi) Pump Stg Tot (bbl)

HALLIBURTON | iCem® Service

Created: 2013-09-25 13:45:25, Version: 2.0.606

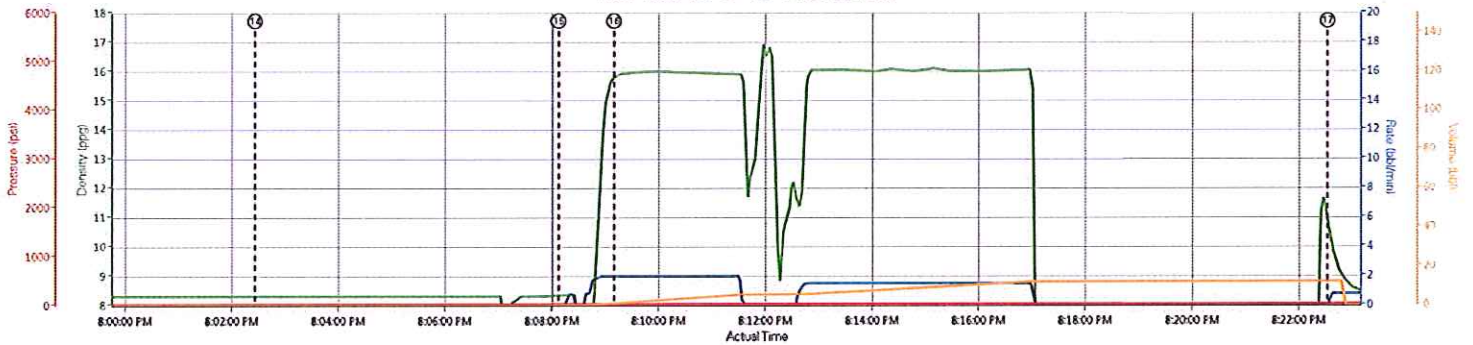
Edit

Customer: WPX ENERGY ROCKY MOUNTAIN LLC-
EBUS
Representative: AL DUNIHOO

Job Date: 9/26/2013 1:48:08 PM
Sales Order #: 900764835

Well: RWF 421-35
ELITE#7: BRENNIECKE/PONDER

WPX - RWF 421-35 - 4.5" PRODUCTION



— DH Density (g/g)
 — Comb Pump Rate (bbl/min)
 — PS Pump Press (psi)
 — Pump Stg Tot (bbl)

① Start Job 8 17,0,15,0	④ Pump Spacer 1 8 23,0,8,24,0,1	⑦ Shut Down 12 56,0,143,0,0	⑩ Slow Rate 8 17,1,5,298,75,9	⑬ End Job 8 21,0,17,0,1,5	⑯ Pump Cement 15 67,2,29,1
② Prime Pumps 8 17,1,2,32,0,1	⑤ Pump Lead Cement 11 55,4,2,129,0,9	⑧ Drop Top Plug 12 61,0,23,0,0	⑪ Pump Plug 9 2,0,818,34,5	⑭ Start Job 8 21,0,17,0,1,5	⑰ Pump Spacer 1 10 43,0,8,35,0,1,2,1
③ Test Lines 8 28,0,37,33,1,9	⑥ Pump Tail Cement 12 59,6,365,72,4	⑨ Pump Displacement 12 3,1,7,28,66,1	⑫ Check Floats 3 21,0,447,0,4,3	⑮ Prime Pumps 8 21,0,17,0,1,5	⑱ End Job 8 32,0,33,0,0

▼ HALLIBURTON | iCem® Service

Created: 2013-09-25 13:45:26, Version: 2.0.606

Edit

Customer: WPX ENERGY ROCKY MOUNTAIN LLC-EBUS

Job Date: 9/26/2013 1:48:08 PM

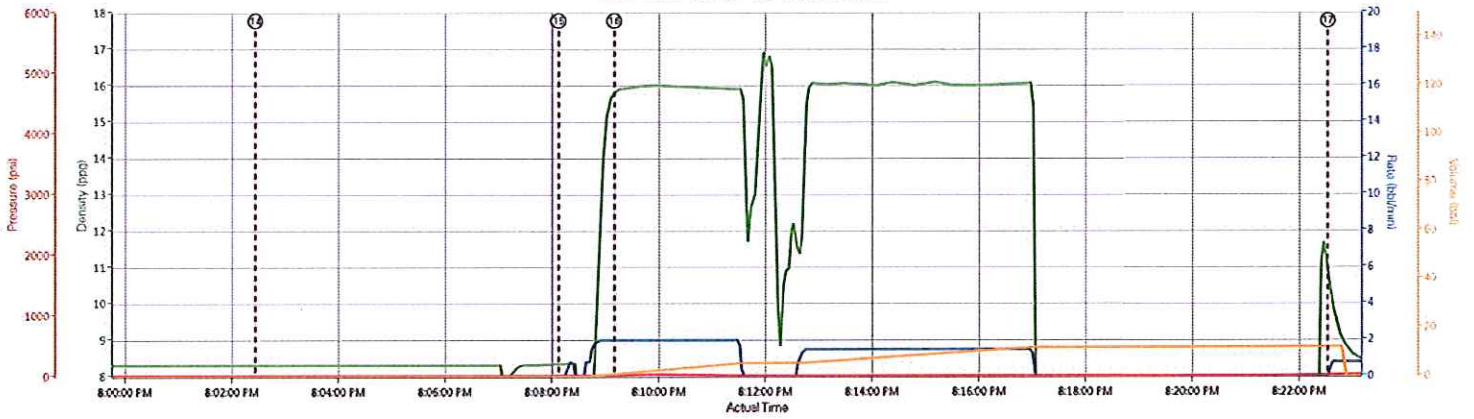
Well: RWF 421-35

Representative: AL DUNIHOO

Sales Order #: 900764835

ELITE#7: BRENNIECKE/PONDER

WPX - RWF 421-35 - 4.5" PRODUCTION



DH Density (ppg) Comb Pump Rate (bbl/min) PS Pump Press (psi) Pump Stg Tot (bbl)

▼ HALLIBURTON | iCen® Service

Created: 2013-09-25 13:45:26, Version: 2.0.606

Edit

Customer: WPX ENERGY ROCKY MOUNTAIN LLC-
EBUS

Representative: AL DUNIHOO

Job Date: 9/25/2013 1:45:06 PM

Sales Order #: 900764835

Well: RWF 421-35

ELITE#7: BRENNIECKE/PONDER