



Cathedral Energy Service
1949 Pyrite Rd Casper Wy 82604

135430

5":100' - MD
10/3/2013 2:14:24 PM

Oper. Company: Encana Oil & Gas
Country: US
State / Province: Colorado
County / Parish: Weld
Started: 09/28/2013 07:00 AM

API/UWI: 051233743900
Field: DJ Basin
Well: Marcus State 3F-36H
Rig: Ensign 135
Ended: 09/29/2013 02:30 PM

Personnel

Day Hand: K Wagoner
Night Hand: B Giannino
Comp. Emp: CathedralEnergy Services

Location

Latitude: 40.088280
Longitude: -104.729960
Elev. GL: 5039
Elev. DF: 5052
Elev. KB: 5052

Hole Data

Size	From	To
8.75	0	7650

Casing Data

Size	From	To
7in	0	7636

Bit Sizes

Size	From	To
8.75	1228	7650

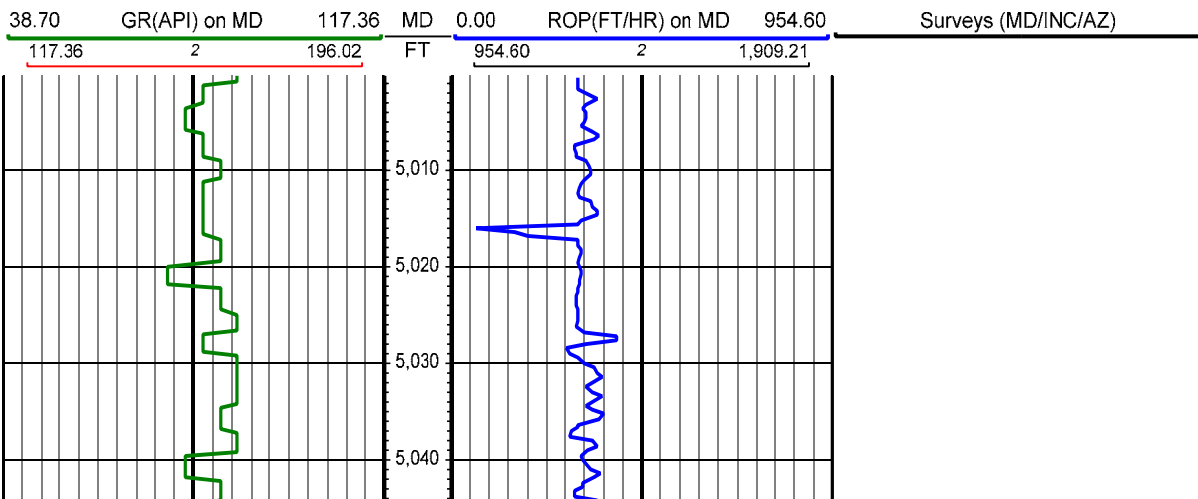
Mud Data

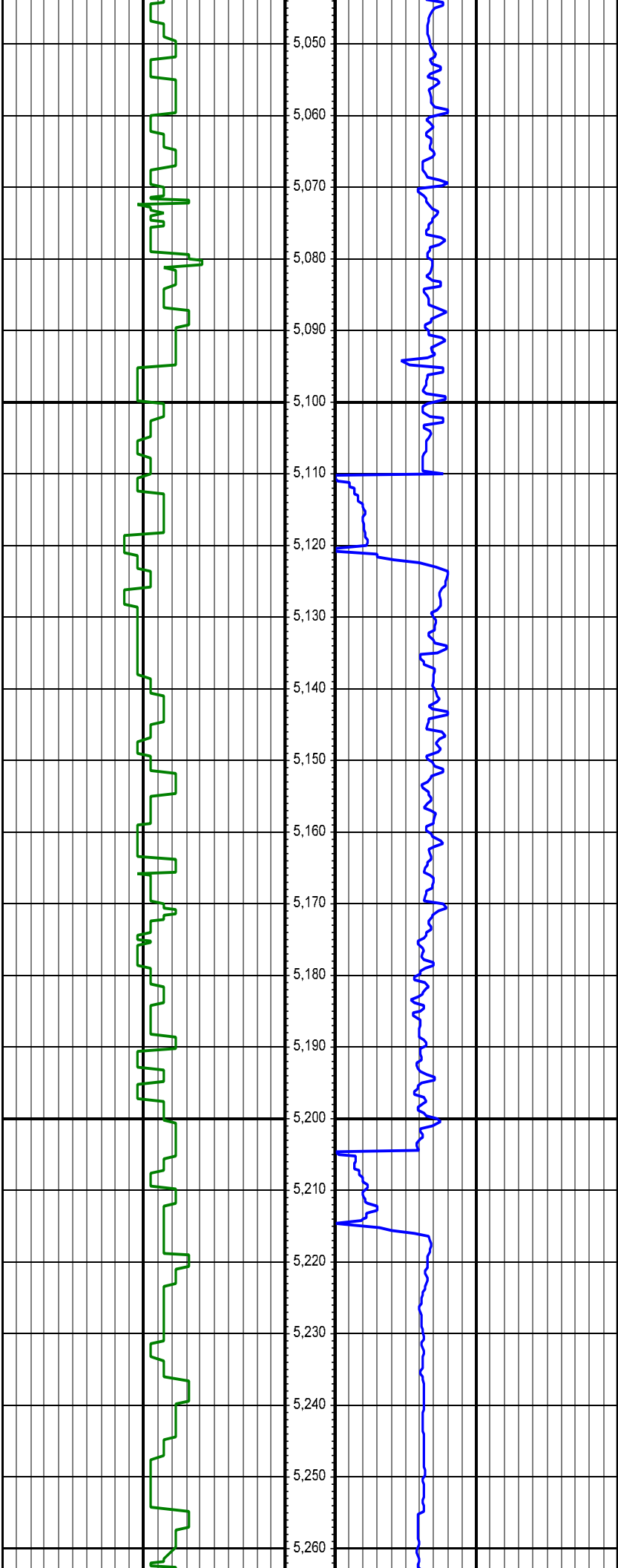
Type	Weight	Density	Viscosity	Rm	Rmf	Rmc	From	To
LSND	8.3	8.3	26.0				1228	7650

Tool Run Data

Serial Number	Gamma Offset	Resist. Offset	Start Time	Start Depth	End Time	End Depth
1182	38.81	0	9/28/2013 7:00:03 AM	5000	9/29/2013 2:30:03 PM	7650

All interpretations are opinions based on inferences from electrical or other measurements and we cannot and do not guarantee the accuracy or correctness of any interpretation, and we shall not except in the case of gross or willful negligence on our part, be liable or responsible for any loss, cost damages or expenses incurred or sustained by anyone resulting from an interpretation made by any of our officers, agents, or employees.

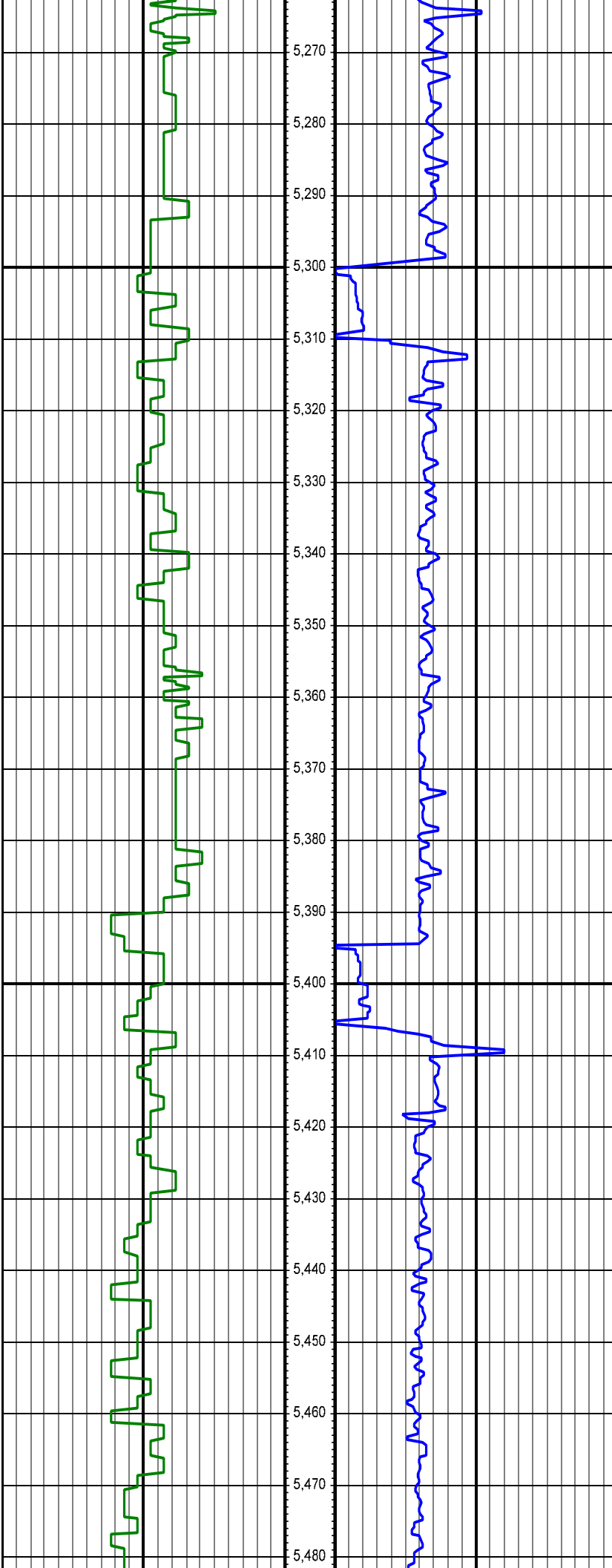




MD: 5058.00 INC: 8.50 AZ: 103.50 5,058.00

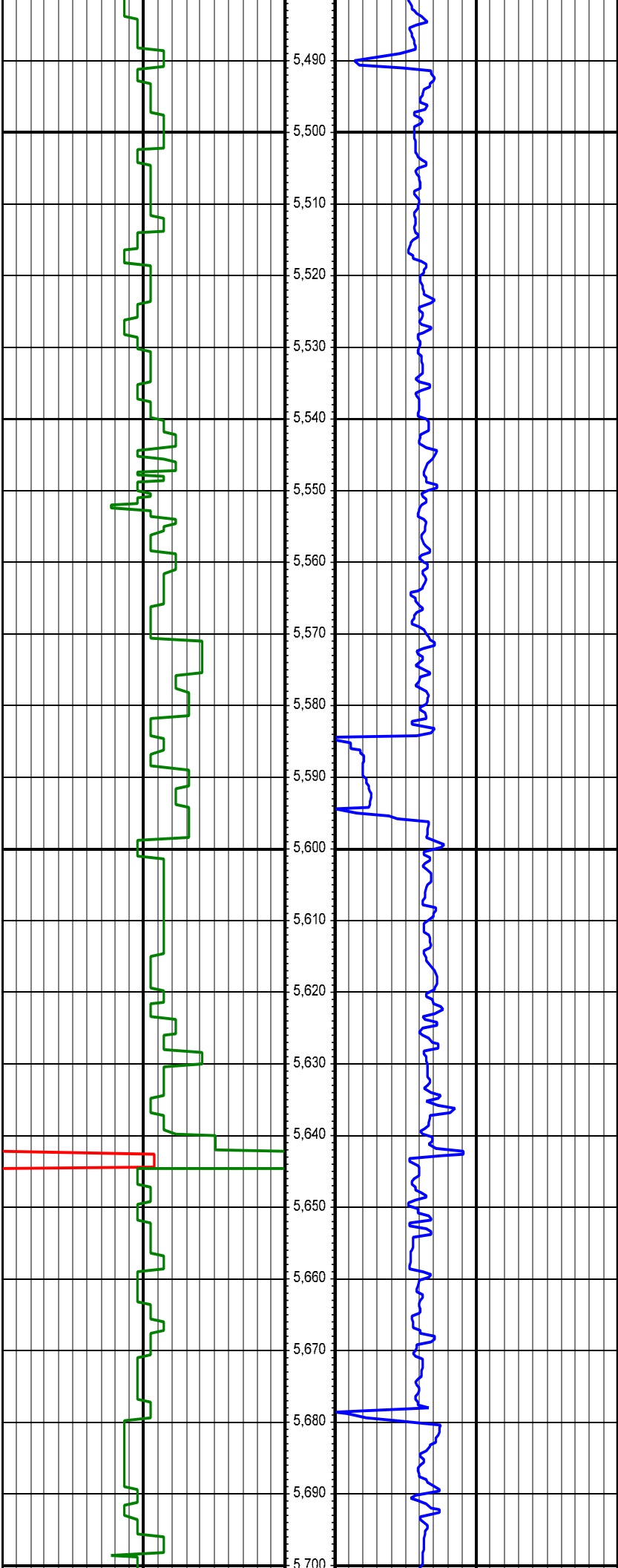
MD: 5153.00 INC: 8.20 AZ: 106.20 5,153.00

MD: 5248.00 INC: 8.90 AZ: 104.80 5,248.00



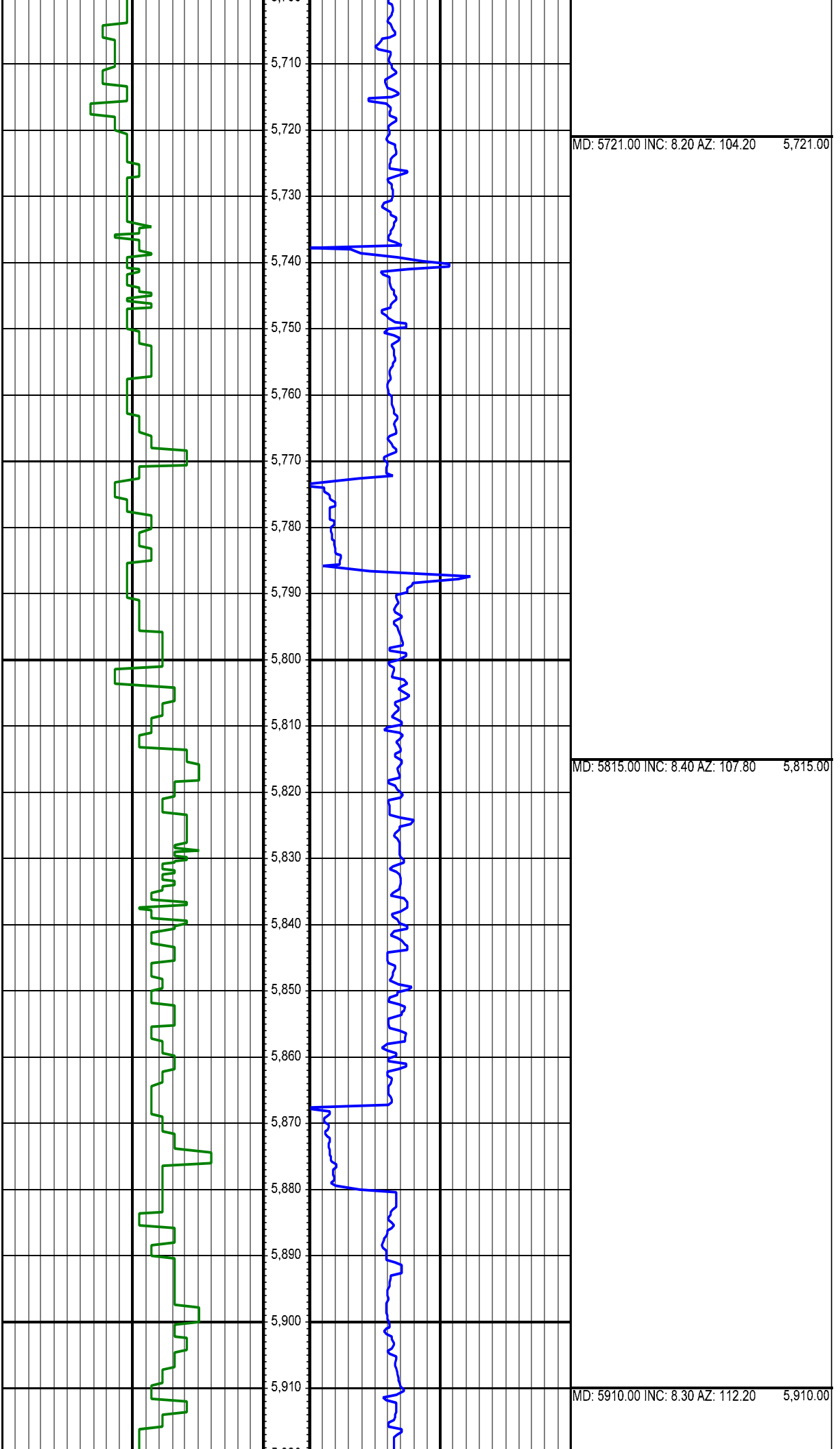
MD: 5342.00 INC: 9.40 AZ: 101.80 5,342.00

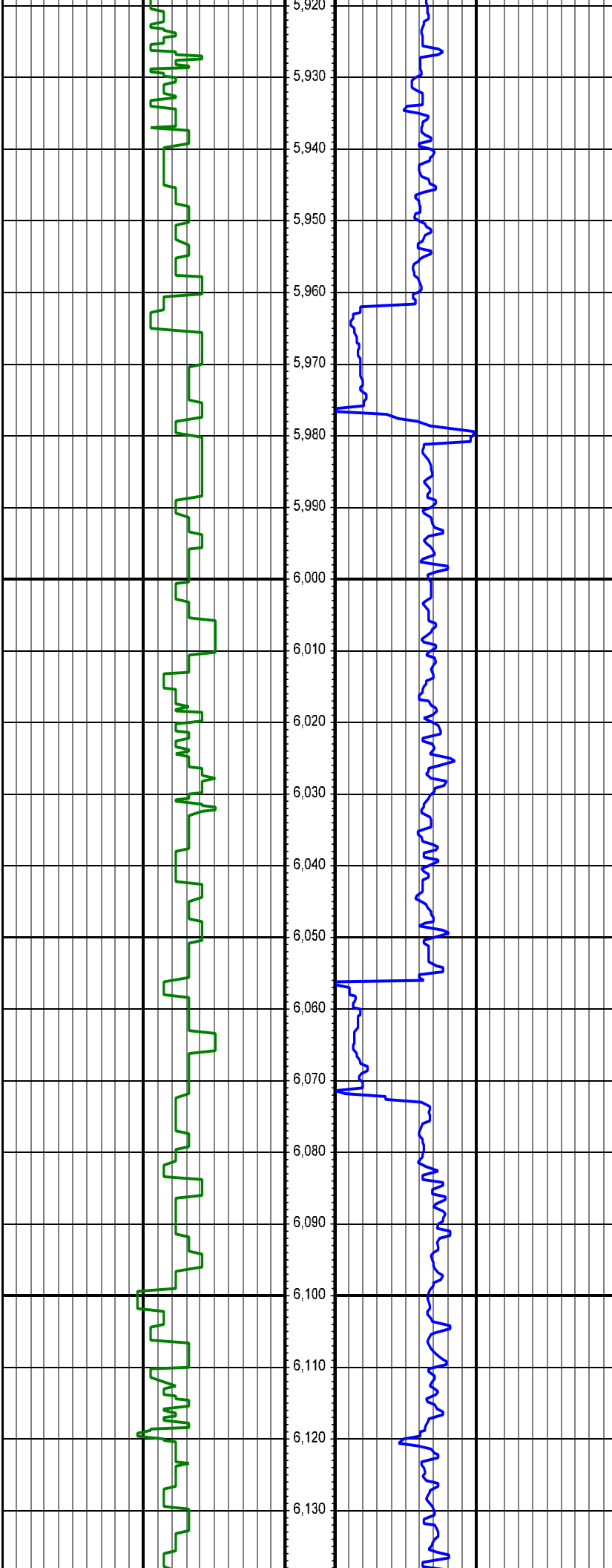
MD: 5437.00 INC: 10.30 AZ: 106.90 5,437.00



MD: 5532.00 INC: 9.20 AZ: 105.20 5,532.00

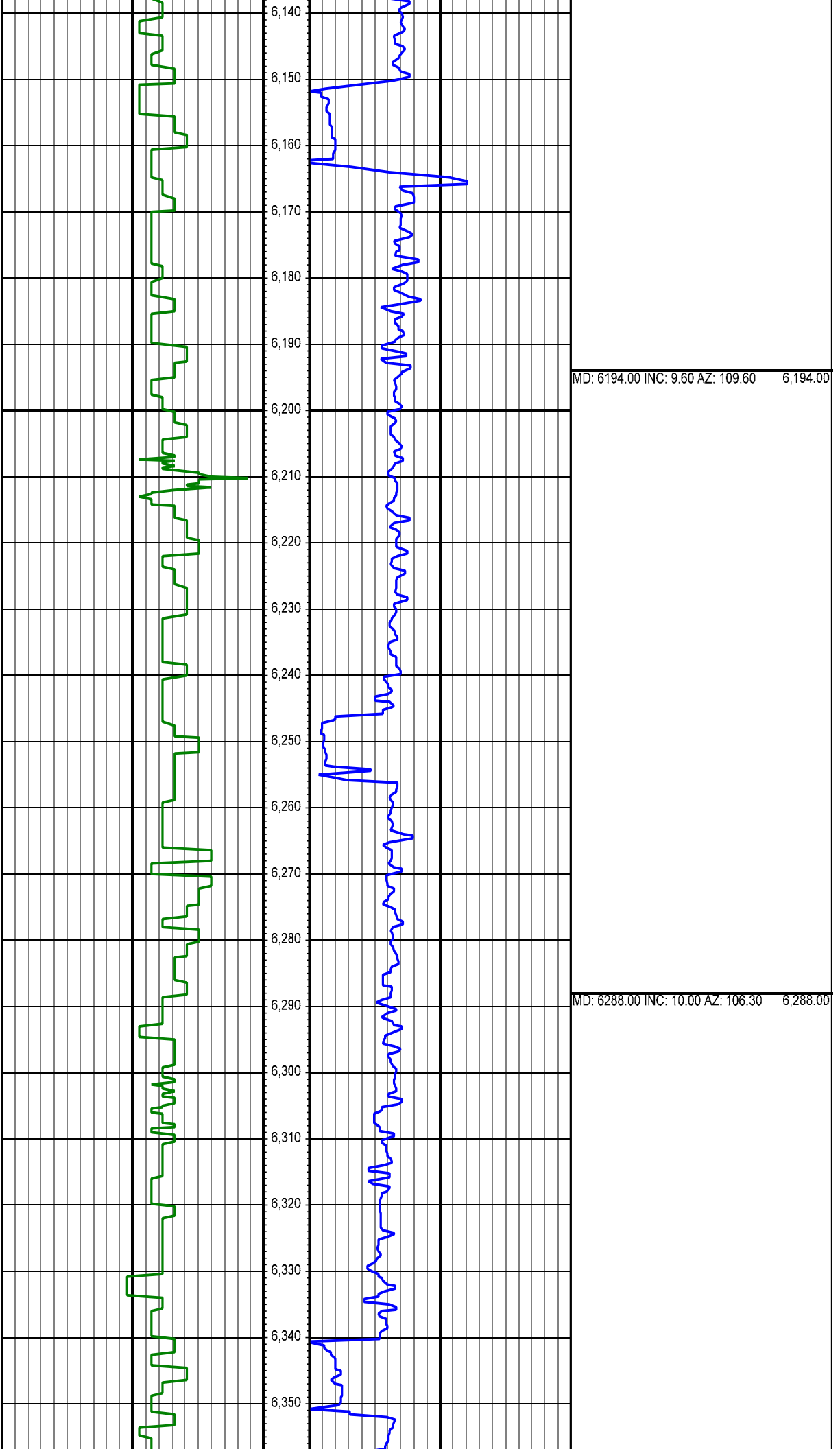
MD: 5626.00 INC: 9.50 AZ: 109.80 5,626.00

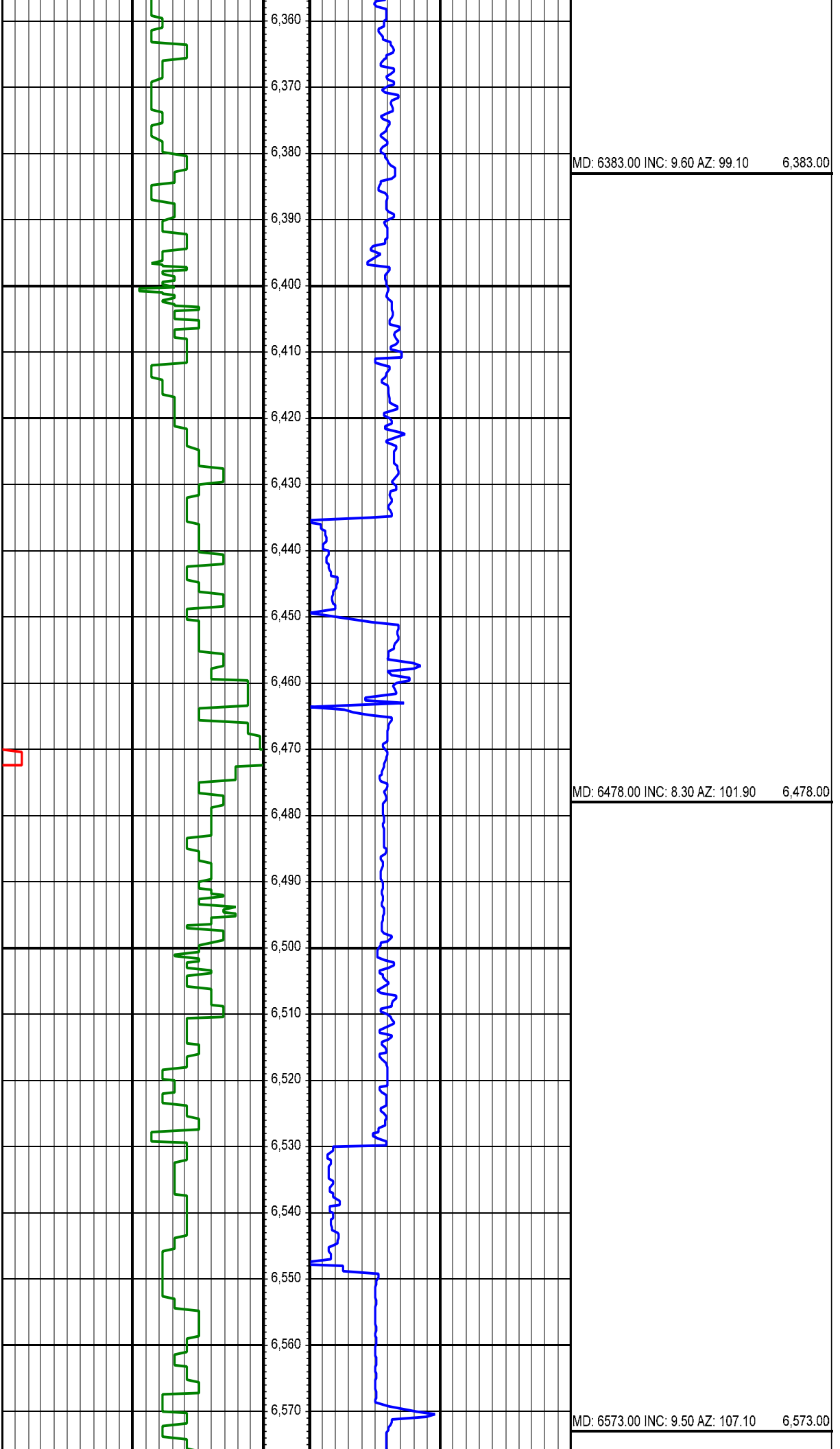


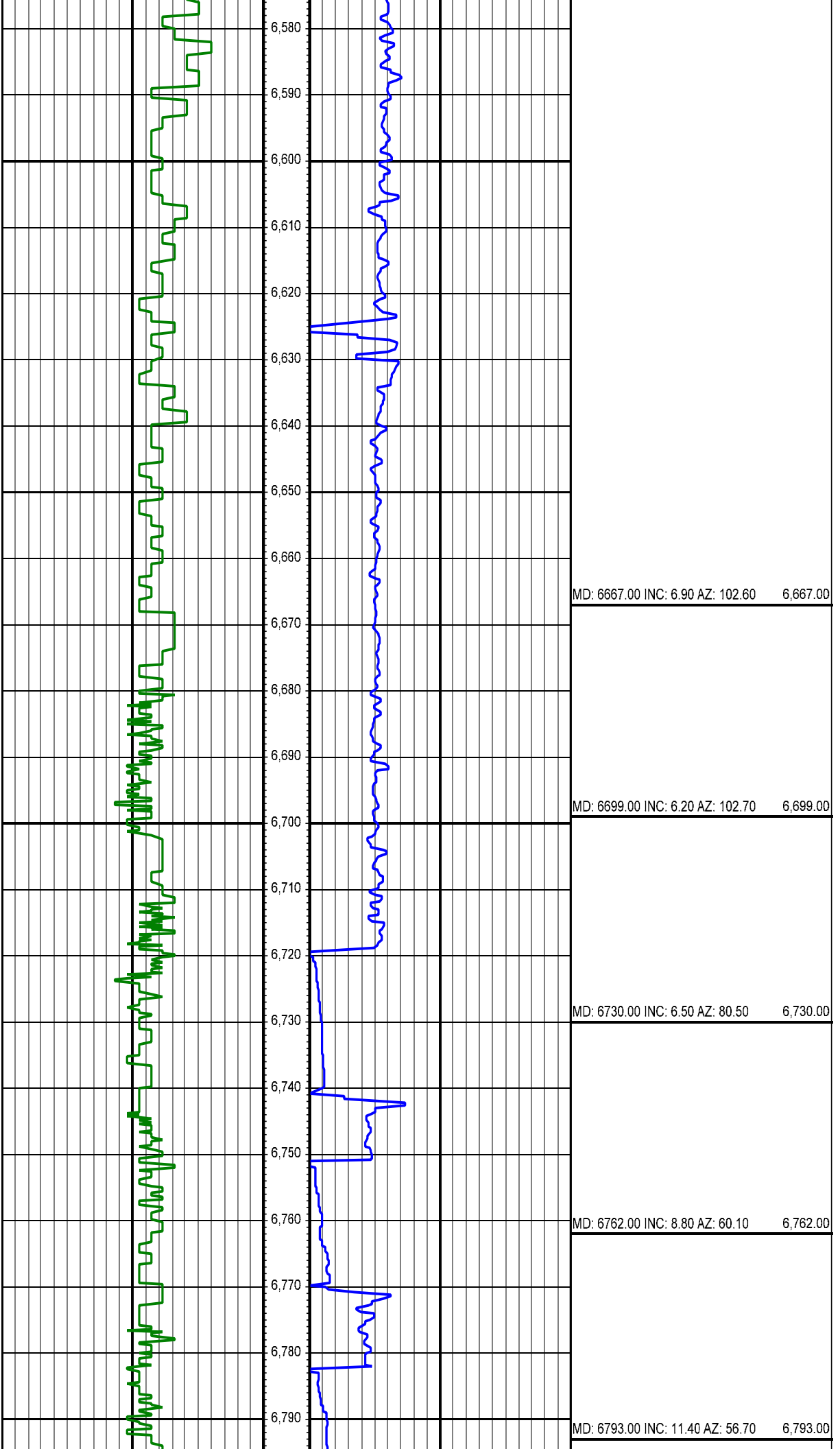


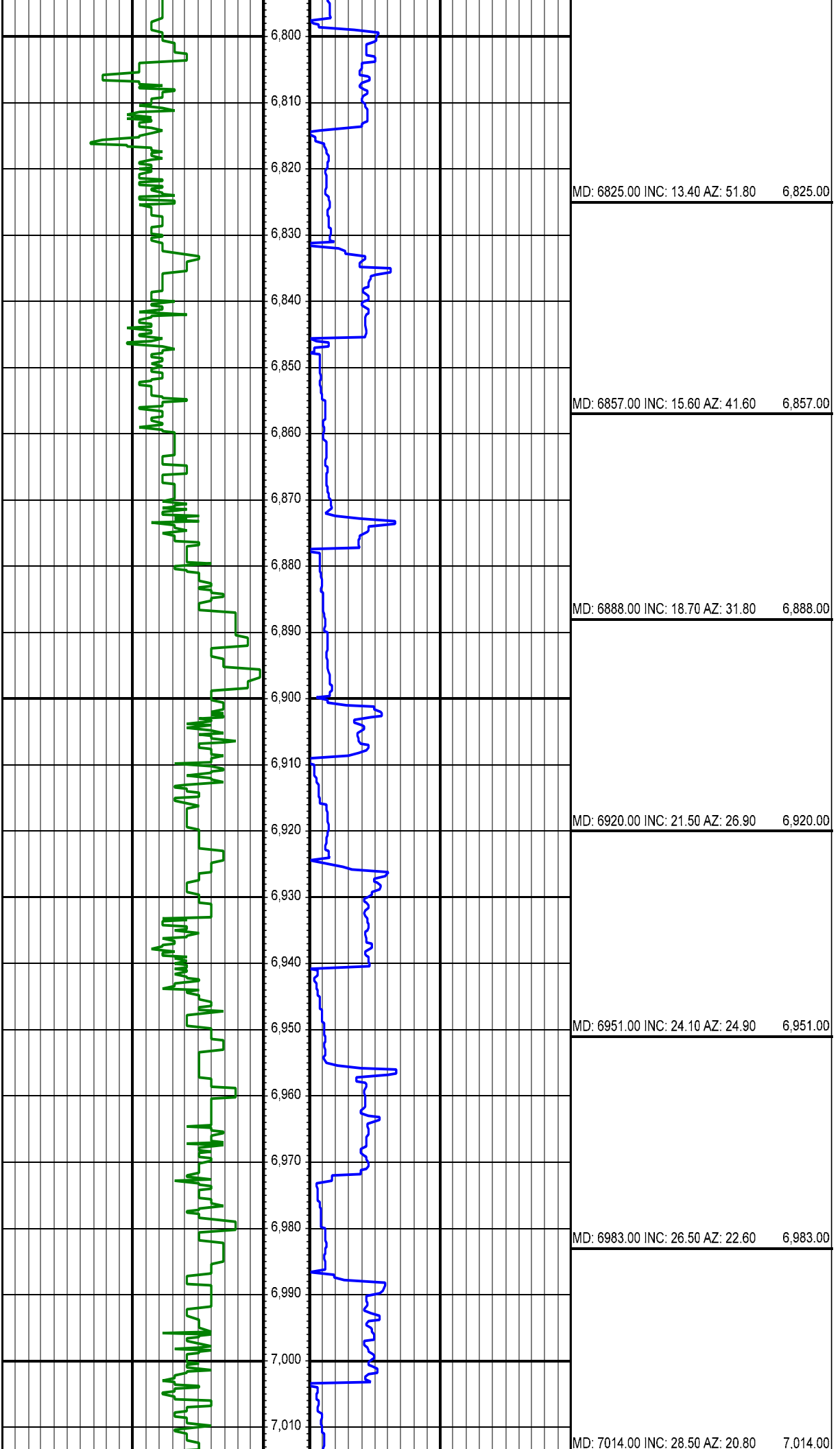
MD: 6005.00 INC: 9.10 AZ: 115.20 6,005.00

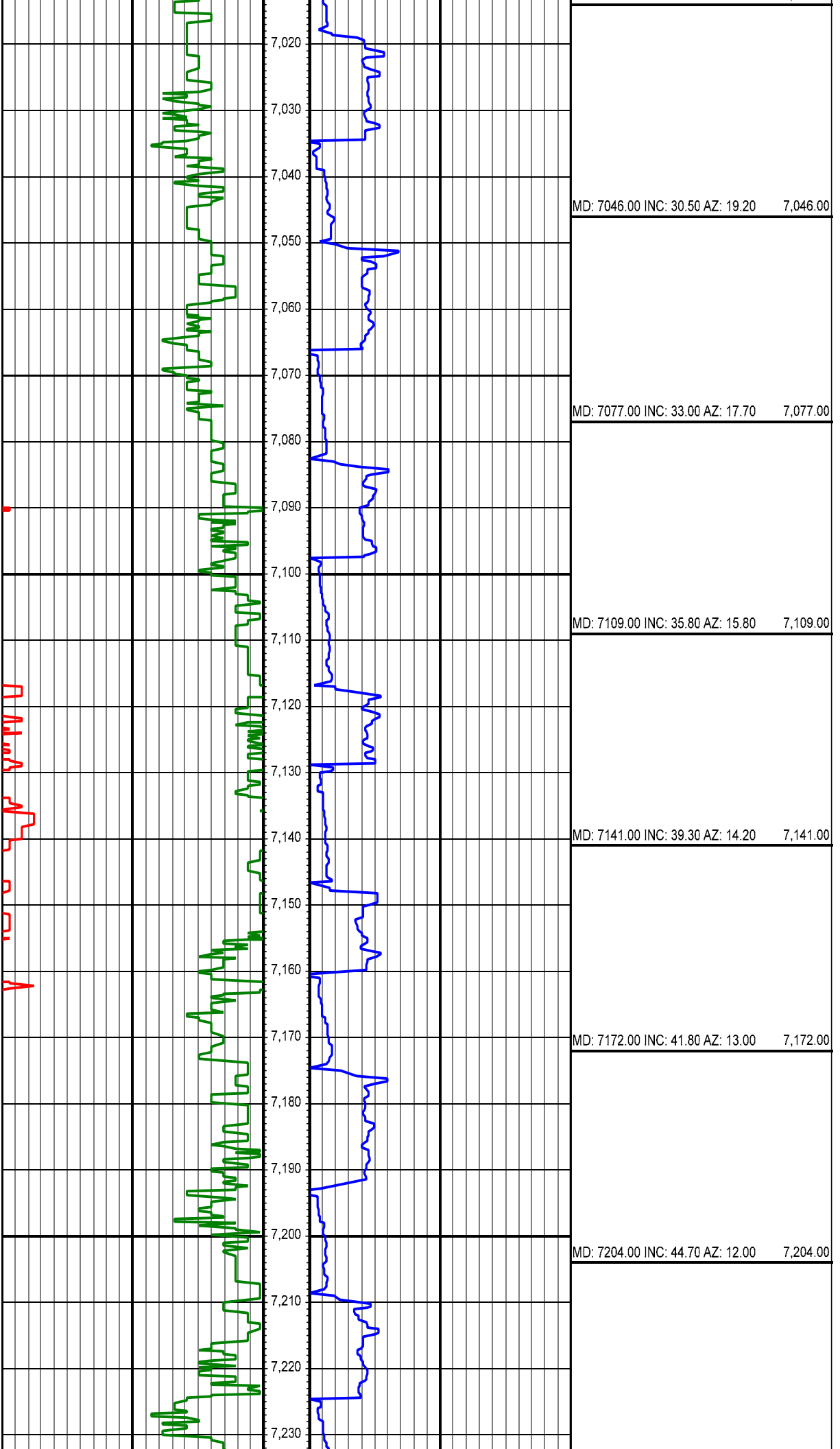
MD: 6099.00 INC: 9.50 AZ: 106.20 6,099.00

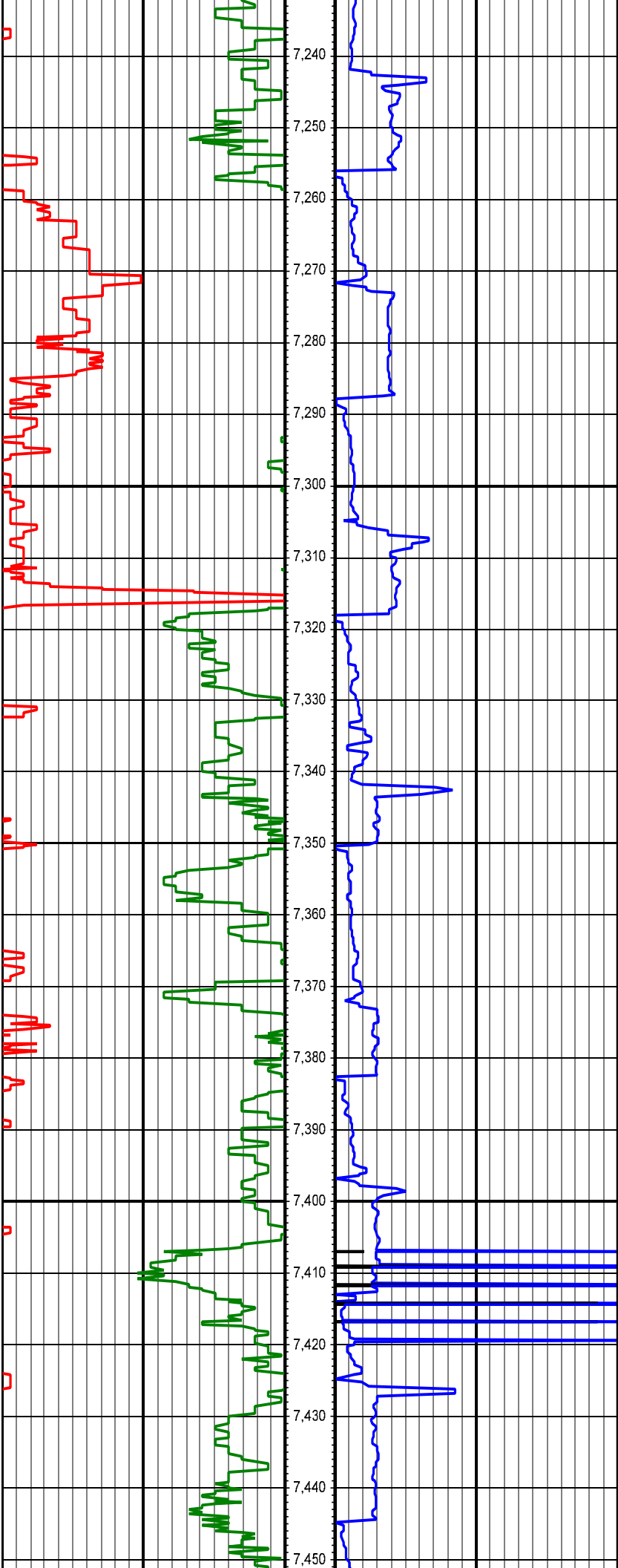












MD: 7235.00 INC: 47.60 AZ: 10.90 7,235.00		
MD: 7267.00 INC: 50.40 AZ: 9.80 7,267.00		
MD: 7299.00 INC: 52.90 AZ: 8.50 7,299.00		
MD: 7330.00 INC: 56.40 AZ: 6.90 7,330.00		
MD: 7362.00 INC: 60.10 AZ: 5.50 7,362.00		
MD: 7393.00 INC: 63.30 AZ: 4.70 7,393.00		
MD: 7425.00 INC: 65.80 AZ: 4.10 7,425.00		

