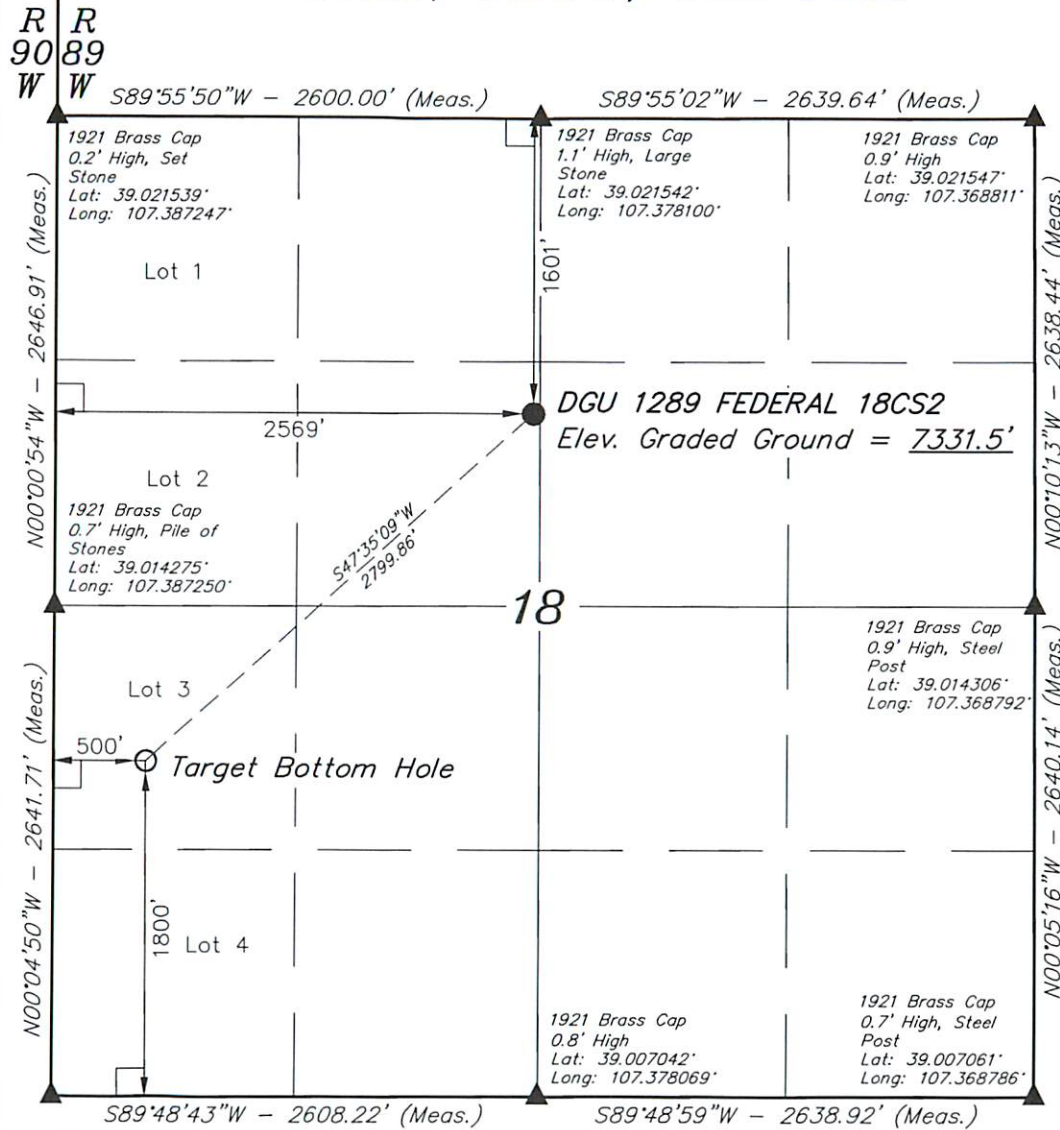


T12S, R89W, 6th P.M.



1921 Brass Cap
1.1' High, Mound
of Stones
Lat: 39.007025°
Long: 107.387242°

NOTE:
SEE FIGURE 5 PLAT FOR EXISTING
IMPROVEMENTS WITHIN 500' OF THE
PROPOSED WELL DISTURBANCE.

LEGEND:

- └─┘ = 90° SYMBOL
- = PROPOSED WELL HEAD.
- ▲ = SECTION CORNERS LOCATED.

NAD 83 (TARGET BOTTOM HOLE)	NAD 83 (SURFACE LOCATION)
LATITUDE = 39°00'43.09" (39.011969)	LATITUDE = 39°01'01.73" (39.017147)
LONGITUDE = 107°23'07.76" (107.385489)	LONGITUDE = 107°22'41.56" (107.378211)
NAD 27 (TARGET BOTTOM HOLE)	NAD 27 (SURFACE LOCATION)
LATITUDE = 39°00'43.13" (39.011981)	LATITUDE = 39°01'01.77" (39.017158)
LONGITUDE = 107°23'05.57" (107.384881)	LONGITUDE = 107°22'39.37" (107.377603)
UTM COORD.: NAD 1927/ZONE 13 N: 14175182.06 E: 962944.55	UTM COORD.: NAD 1927/ZONE 13 N: 14177013.80 E: 965061.13

PDOP = 1.6

GUNNISON ENERGY CORPORATION

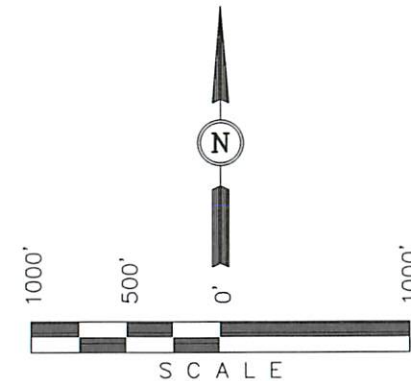
Well location, DGU 1289 FEDERAL 18CS2, located
as shown in the SE 1/4 NW 1/4 of Section 18,
T12S, R89W, 6th. P.M., Gunnison County, Colorado.

BASIS OF ELEVATION

SPOT ELEVATION LOCATED IN THE NE 1/4 OF SECTION 9,
T11S, R90W, 6th P.M. TAKEN FROM THE BULL MOUNTAIN
QUADRANGLE, COLORADO, GUNNISON COUNTY, 7.5 MINUTE
SERIES (TOPOGRAPHICAL MAP) PUBLISHED BY THE UNITED
STATES DEPARTMENT OF THE INTERIOR, GEOLOGICAL SURVEY.
SAID ELEVATION IS MARKED AS BEING 7487 FEET.

BASIS OF BEARINGS

BASIS OF BEARINGS IS A G.P.S. OBSERVATION.



CERTIFICATE

THIS IS TO CERTIFY THAT THE ABOVE PLAT WAS PREPARED FROM
FIELD NOTES OF ACTUAL SURVEYS MADE BY ME OR UNDER MY
SUPERVISION AND THAT THE SAME ARE TRUE AND CORRECT TO THE
BEST OF MY KNOWLEDGE AND BELIEF.

REGISTERED LAND SURVEYOR
REGISTRATION NO. 0000000000
STATE OF COLORADO
02-13-13

UINTAH ENGINEERING & LAND SURVEYING

85 SOUTH 200 EAST - VERNAL, UTAH 84078

(435) 789-1017

SCALE 1" = 1000'	DATE SURVEYED: 01-22-13	DATE DRAWN: 12-13-13
PARTY BRIAN BAKER B.J. J.G.G.	REFERENCES G.L.O. PLAT	
WEATHER COLD	FILE GUNNISON ENERGY CORPORATION	