

Rohn State LD09-66-1HN

TVD
2":100'

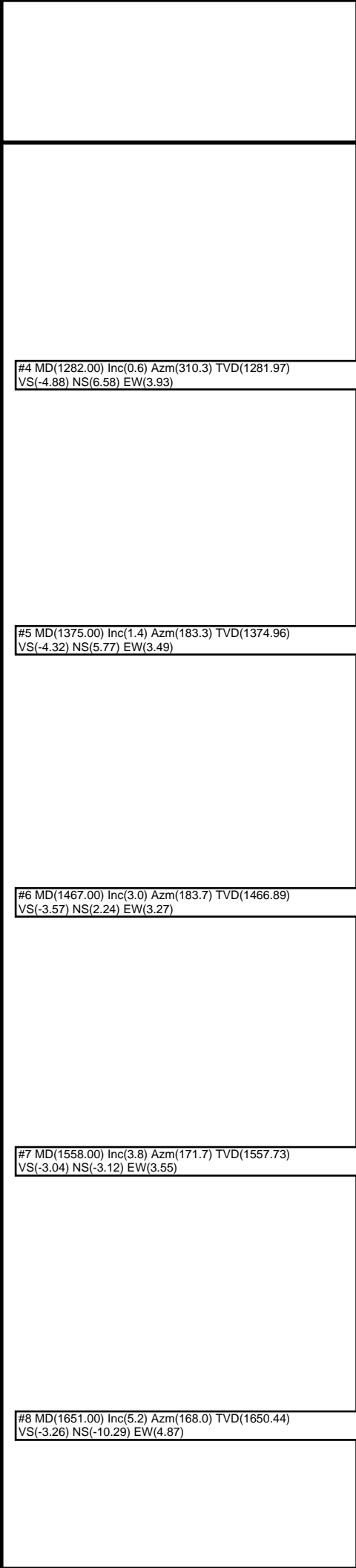
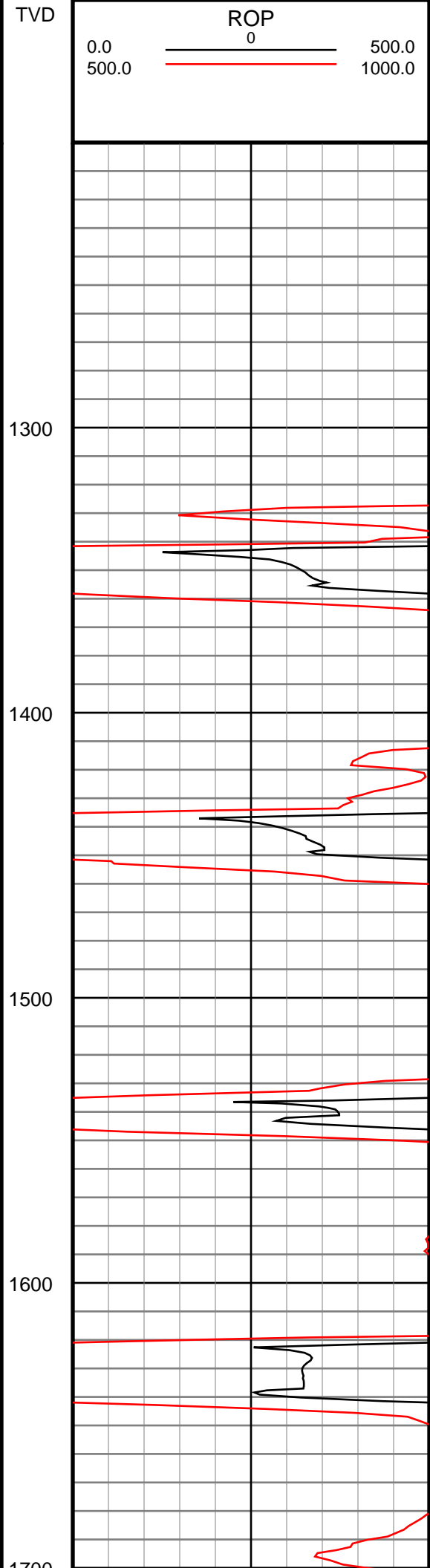
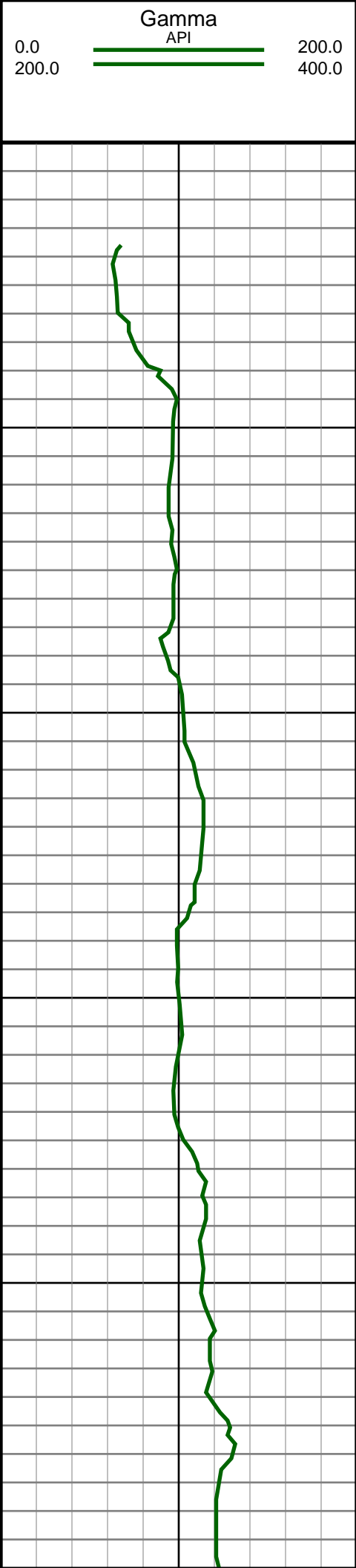
Company: Noble Energy Inc
Well Name: Rohn State LD09-66-1HN
UWI or LSD: 05-123-37540
Rig Id: H&P 273
State: Colorado
County/Parish: Weld
Country: USA
Survey Company: Ensign Directional
Job number: 139452
Dir. Driller Days Kody Wood
Dir. Driller Nights Mike David
MWD/LWD Days Brennan Knerr
MWD/LWD Nights Jamey House

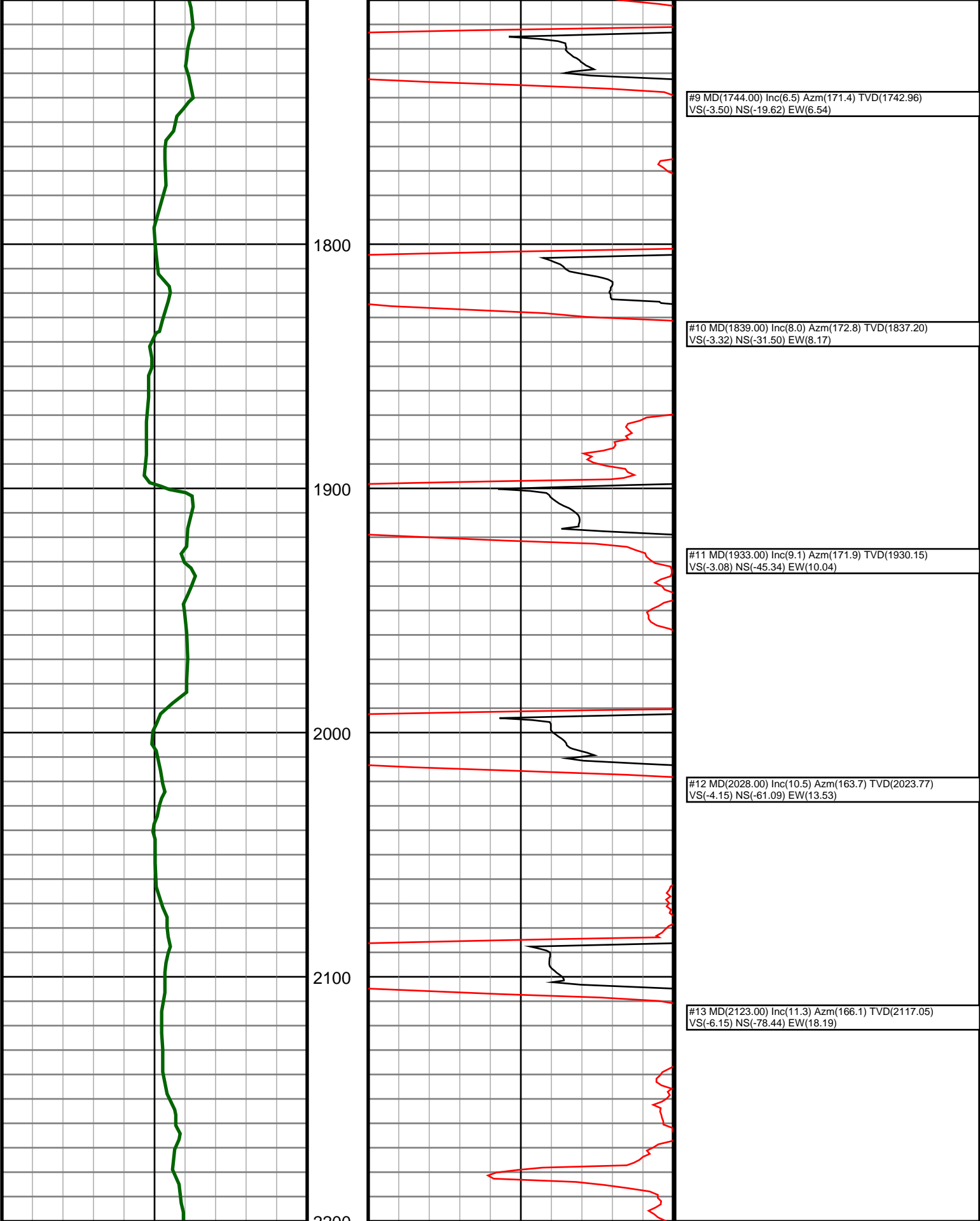
Log measurements:
Depth measured from:
Maximum temperature:

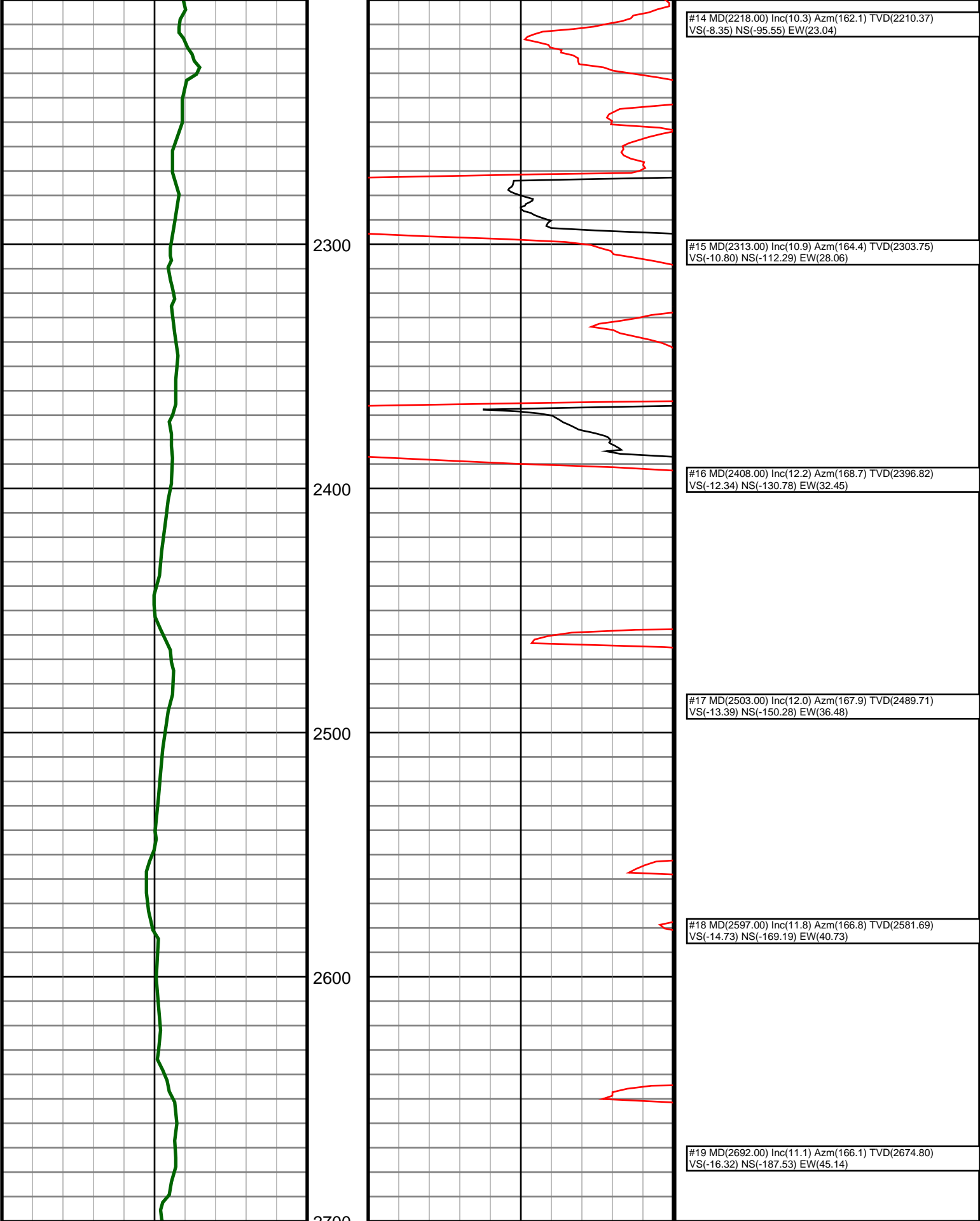
Depth **Date**
Start: 1230 ft 10/27/2013
End: 9729 ft 11/2/2013

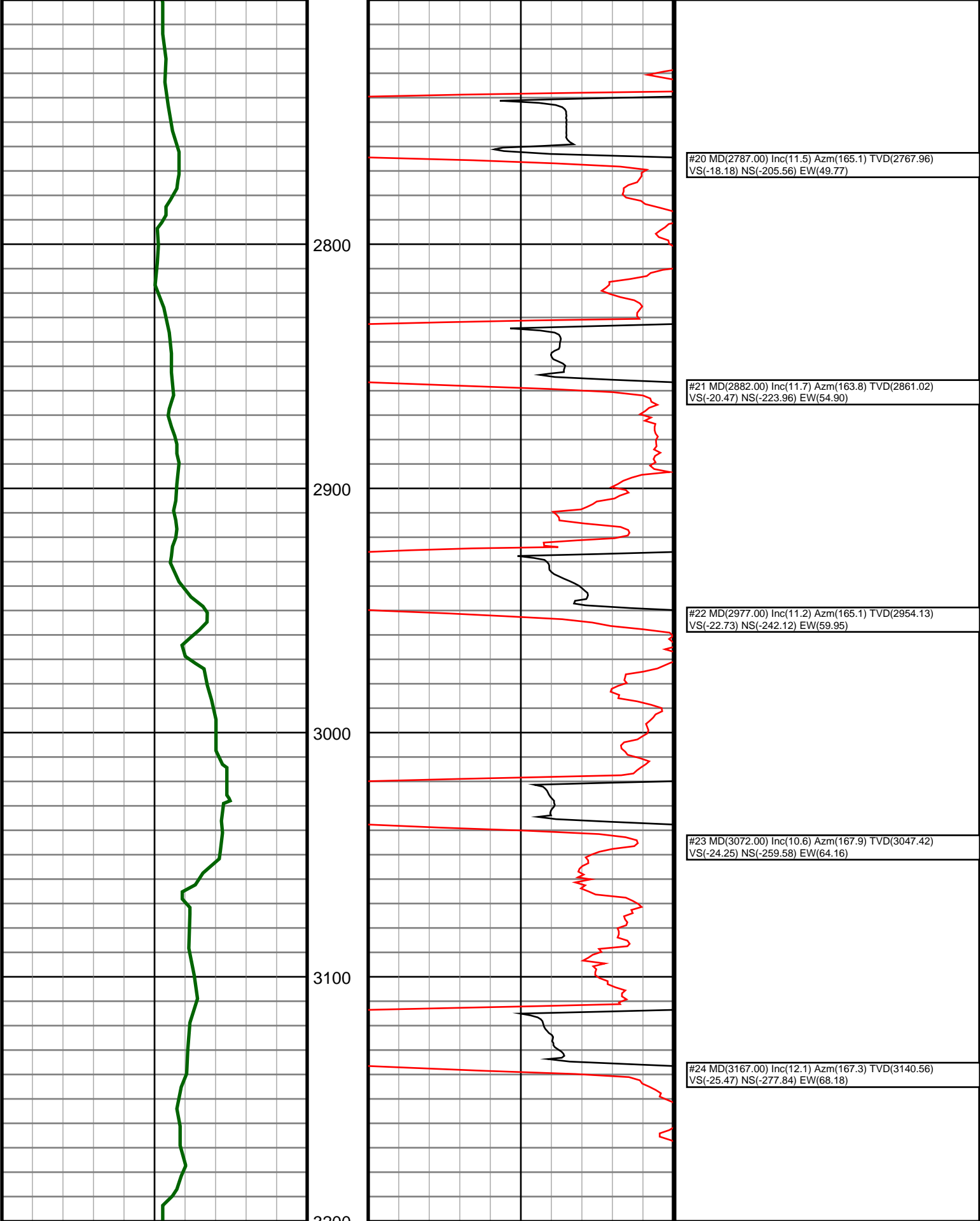
Casing	Depth	Size	Mud Type:	Elevations
Surface:	1249	9.625	Density:	KB: 4736
Intermediate:			Viscosity:	GL: 4712
			Rm:	Rmf:
			Rmc:	DF: 4736

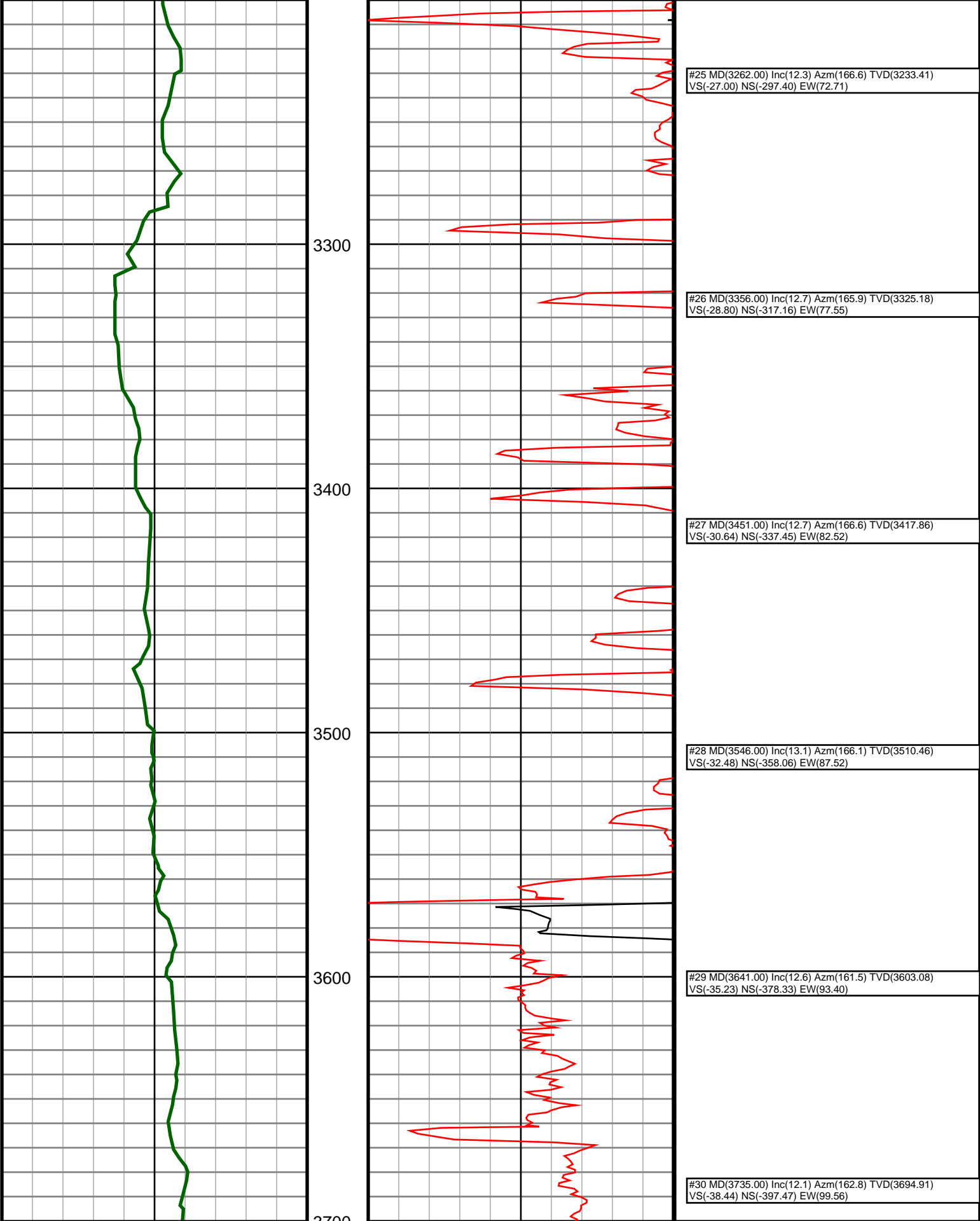
Run	Bit Size	Offsets	Gamma	Survey	Start	Depths	End	Start	Dates	End
1	8.75	-1.00	-1.00		0	1230		10/26/2013		10/26/2013
2	8.75	60.65	55.65		1230	4982		10/27/2013		10/28/2013
3	8.75	62.03	57.03		4982	5787		10/28/2013		10/29/2013
4	8.75	59.88	54.88		5787	6064		10/29/2013		10/29/2013
5	6.125	71.67	66.67		6064	9729		10/30/2013		11/2/2013
6										
7										
8										
9										
10										

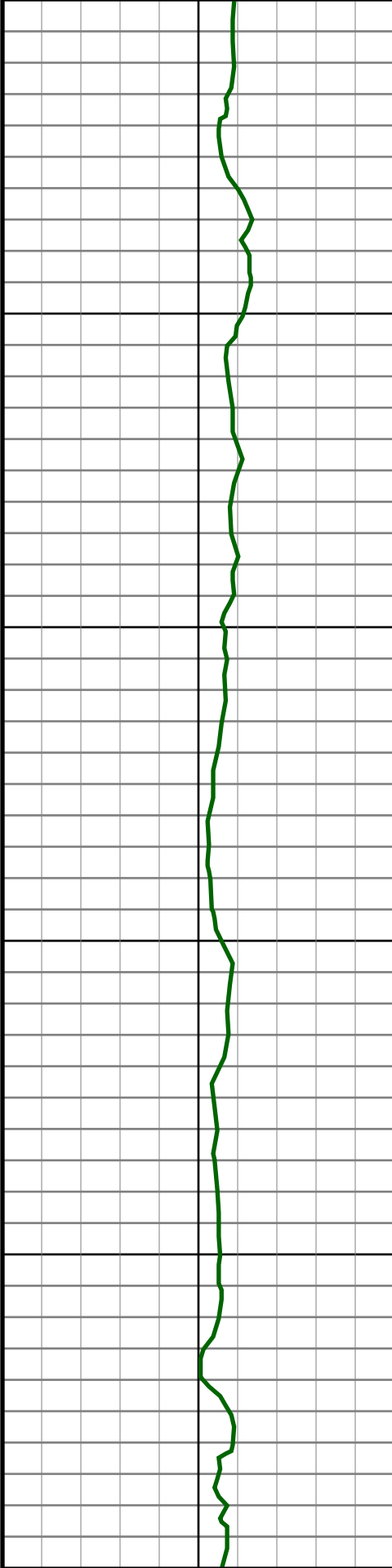












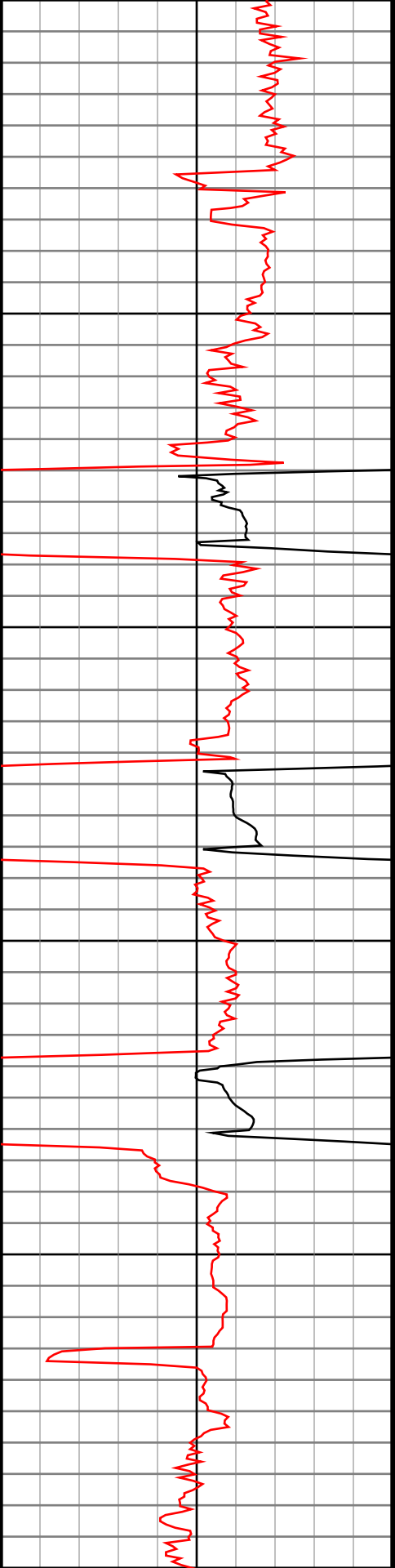
3800

3900

4000

4100

4200



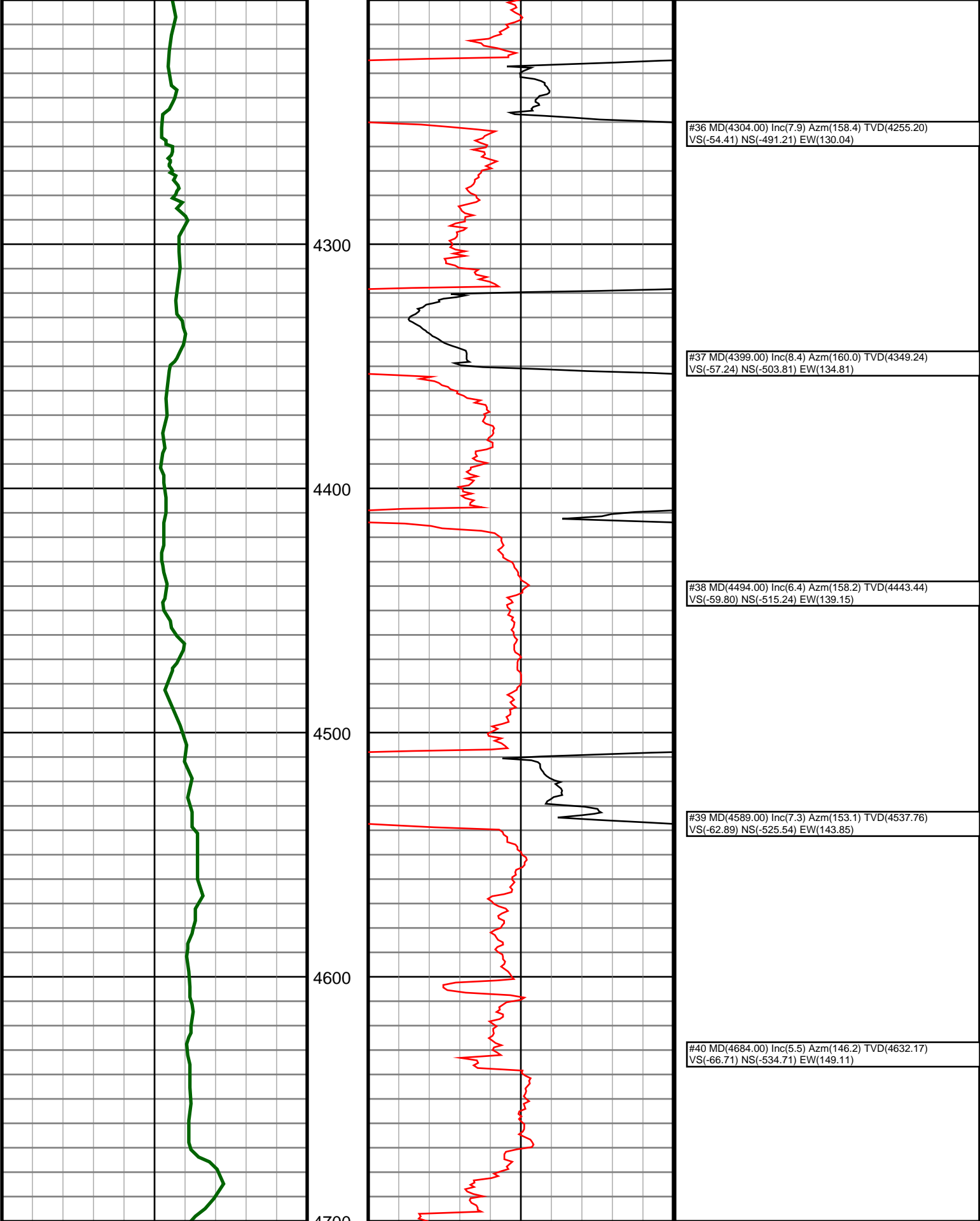
#31 MD(3830.00) Inc(10.3) Azm(167.0) TVD(3788.10)
VS(-40.55) NS(-415.26) EW(104.42)

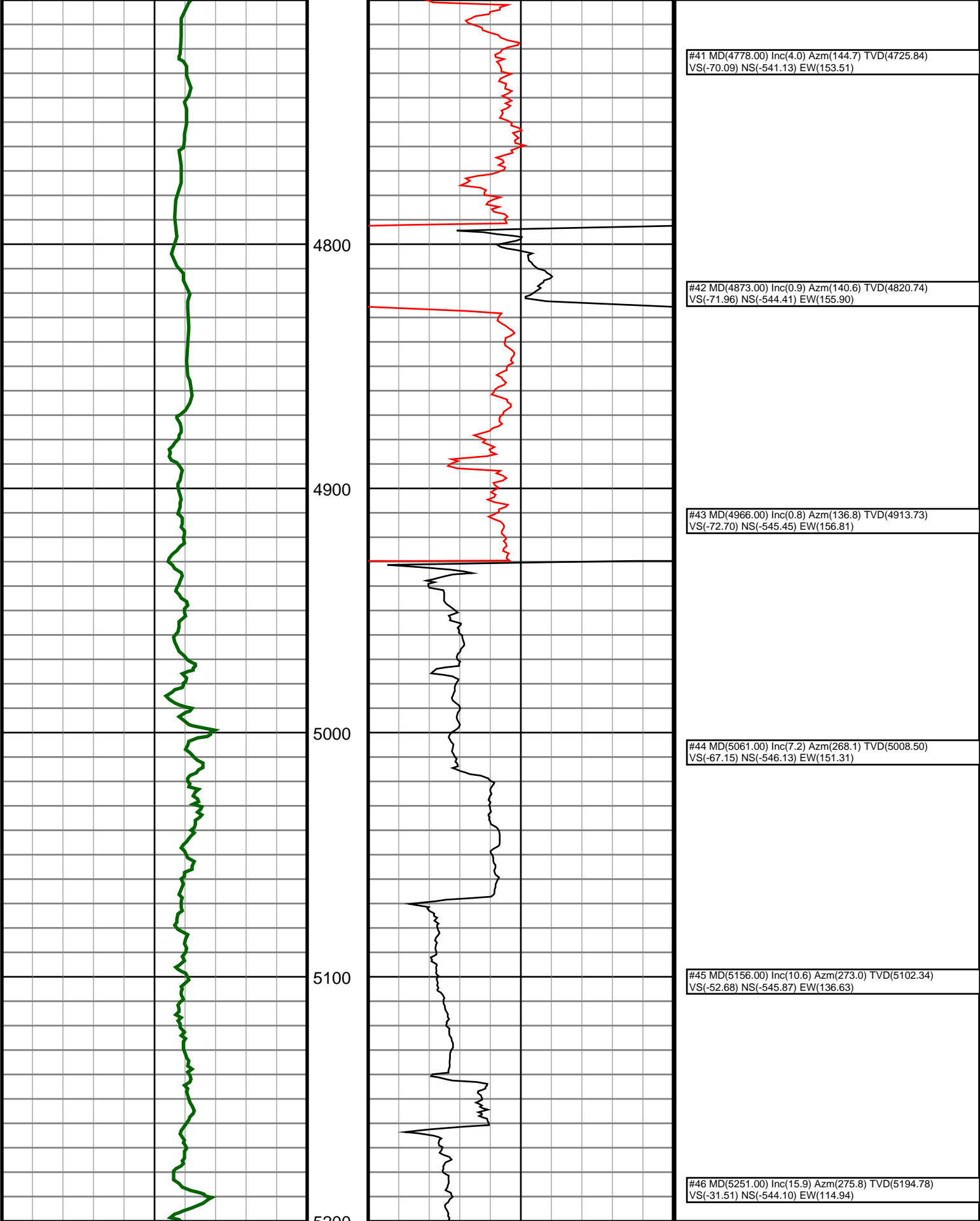
#32 MD(3925.00) Inc(9.9) Azm(167.3) TVD(3881.62)
VS(-41.77) NS(-431.50) EW(108.12)

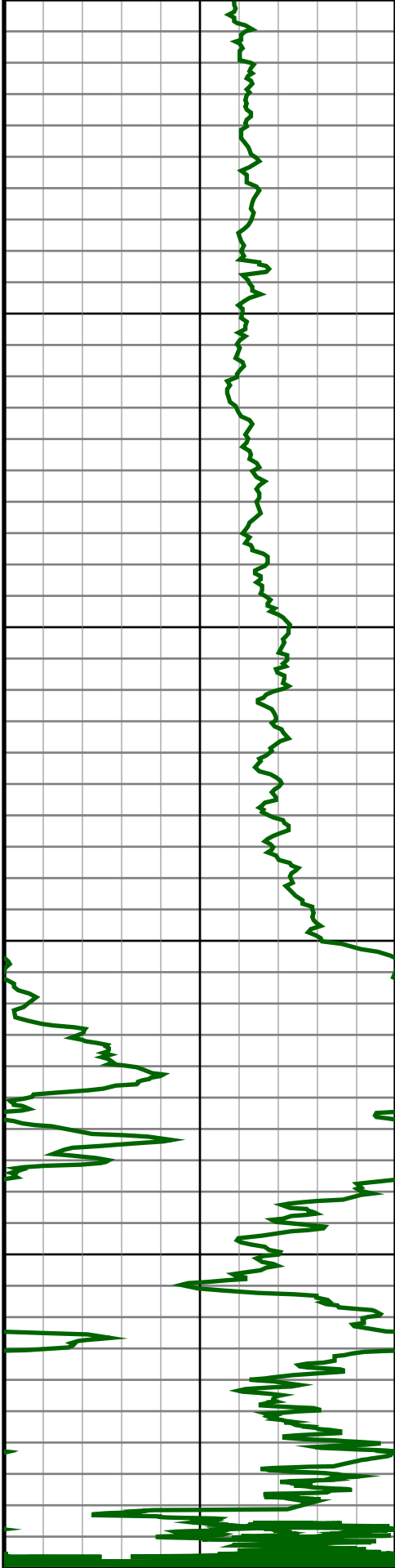
#33 MD(4020.00) Inc(10.0) Azm(161.2) TVD(3975.20)
VS(-43.79) NS(-447.27) EW(112.58)

#34 MD(4115.00) Inc(10.8) Azm(158.0) TVD(4068.64)
VS(-47.29) NS(-463.34) EW(118.57)

#35 MD(4210.00) Inc(9.0) Azm(157.1) TVD(4162.22)
VS(-51.16) NS(-478.43) EW(124.80)







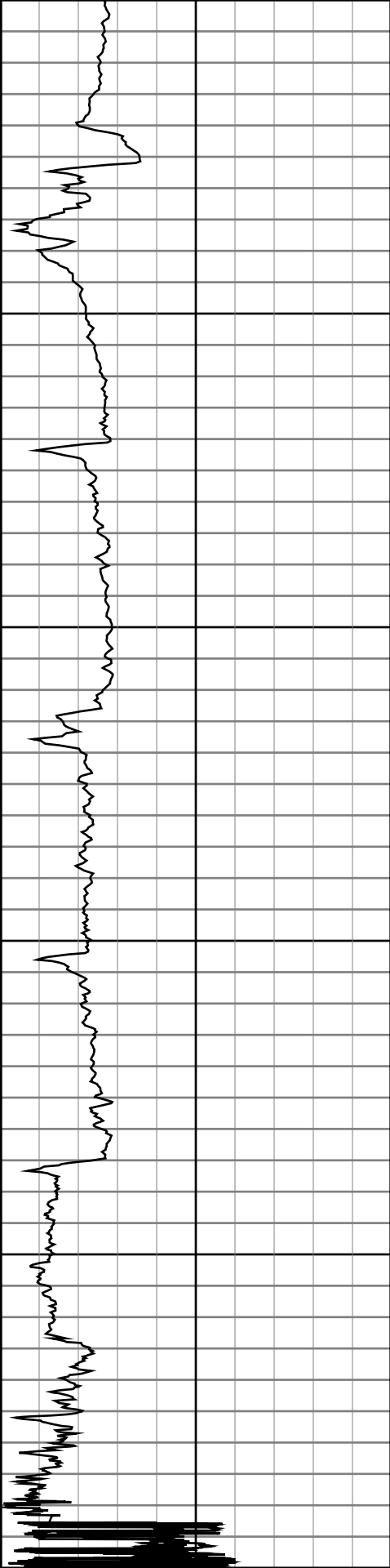
5300

5400

5500

5600

5700



#47 MD(5346.00) Inc(19.0) Azm(277.9) TVD(5285.40)
VS(-4.08) NS(-540.65) EW(86.67)

#48 MD(5440.00) Inc(26.0) Azm(284.6) TVD(5372.20)
VS(29.56) NS(-533.35) EW(51.52)

#49 MD(5535.00) Inc(33.7) Azm(289.2) TVD(5454.55)
VS(72.05) NS(-519.41) EW(6.41)

#50 MD(5630.00) Inc(42.9) Azm(292.0) TVD(5529.03)
VS(123.27) NS(-498.58) EW(-48.58)

#51 MD(5725.00) Inc(52.8) Azm(291.4) TVD(5592.70)
VS(183.97) NS(-472.60) EW(-113.95)

#52 MD(5822.00) Inc(64.6) Azm(287.6) TVD(5643.02)
VS(256.96) NS(-445.15) EW(-191.98)

#53 MD(5917.00) Inc(79.2) Azm(281.1) TVD(5672.48)
VS(339.87) NS(-423.05) EW(-279.22)

9700.0:Bit Projection @9729' INC: 88.9 AZM: 266.8
TVD: 5700.20 VS: 4122.97
#94 MD(9729.00) Inc(88.9) Azm(266.8) TVD(5700.20)

