

# Rohn State LD09-66-1HN

**MD**  
**2":100'**

**Company:** Noble Energy Inc  
**Well Name:** Rohn State LD09-66-1HN  
**UWI or LSD:** 05-123-37540  
**Rig Id:** H&P 273  
**State:** Colorado  
**County/Parish:** Weld  
**Country:** USA  
**Survey Company:** Ensign Directional  
**Job number:** 139452  
**Dir. Driller Days** Kody Wood  
**Dir. Driller Nights** Mike David  
**MWD/LWD Days** Brennan Knerr  
**MWD/LWD Nights** Jamey House

**Log measurements:**  
**Depth measured from:**  
**Maximum temperature:**

**Depth** **Date**  
**Start:** 1230 ft 10/27/2013  
**End:** 9729 ft 11/2/2013

**Casing Depth Size**  
**Surface:** 1249 9.625  
**Intermediate:**

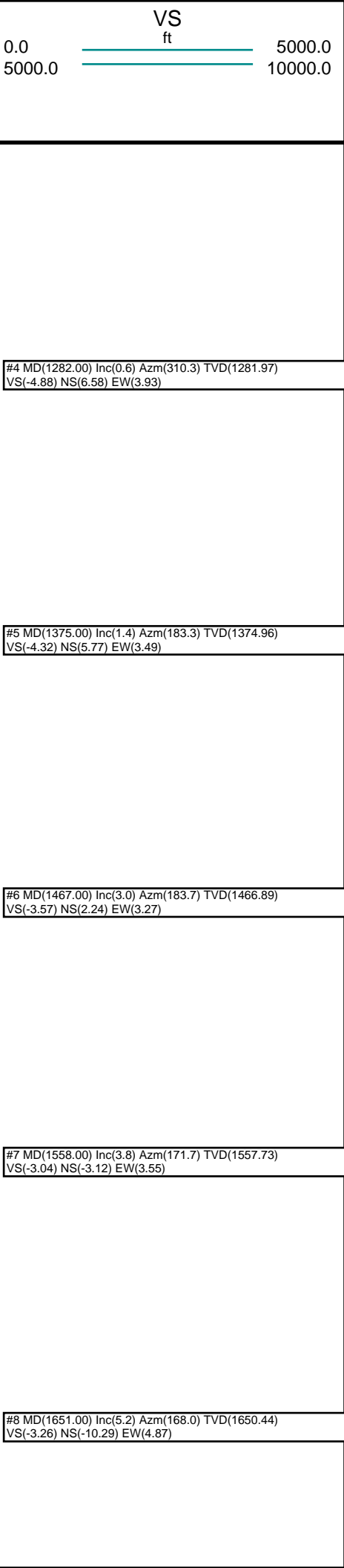
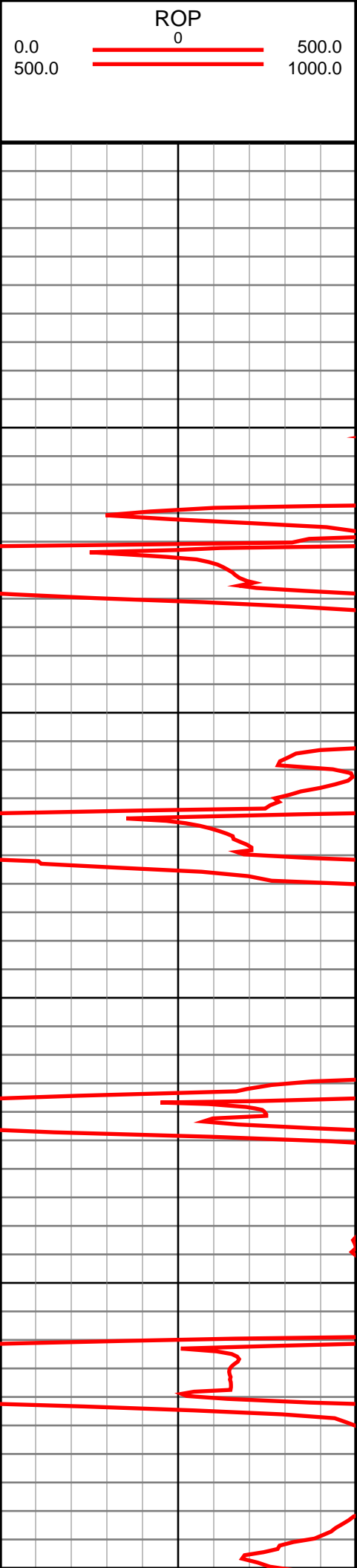
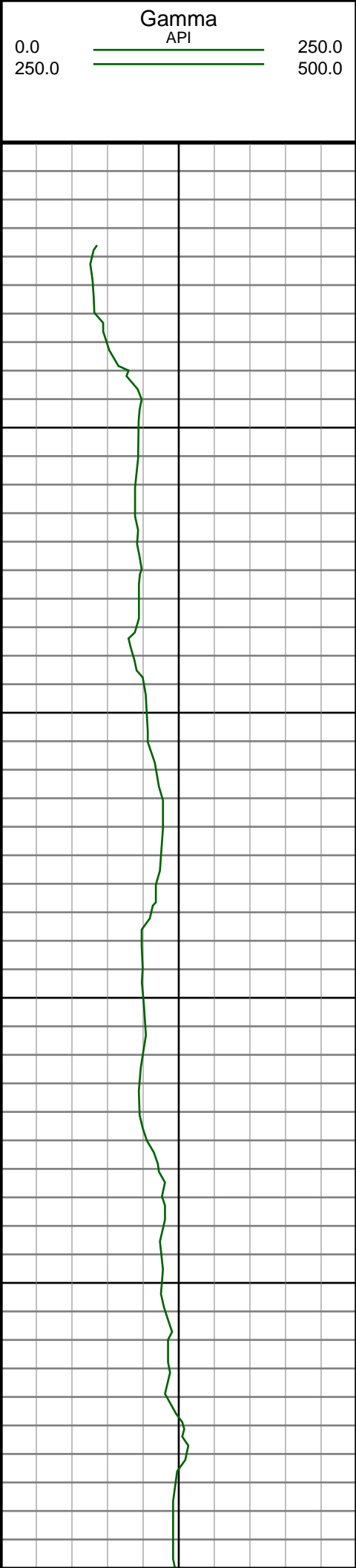
**Mud Type:**  
**Density:**  
**Viscosity:**  
**Rm:**

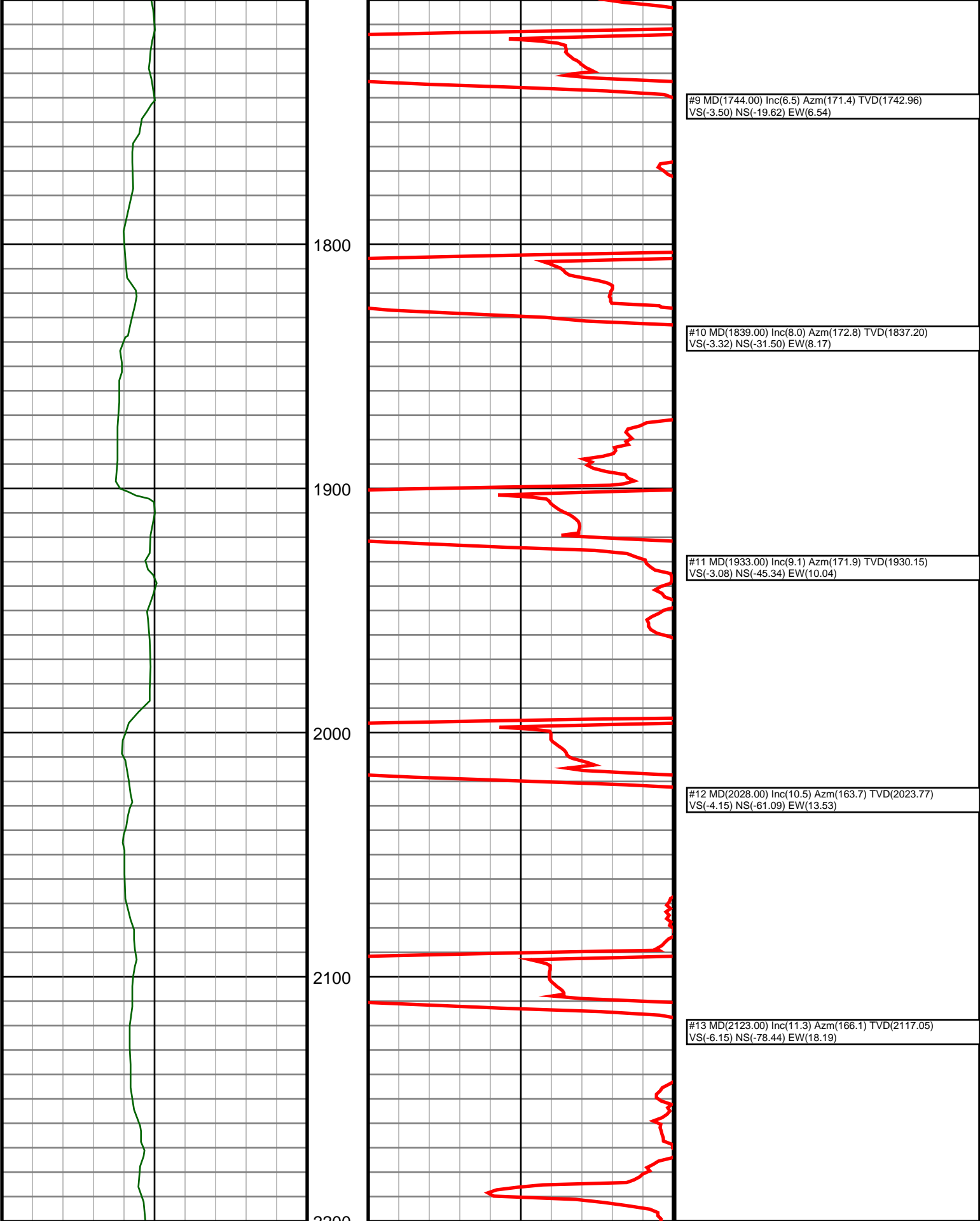
**Rmf:**

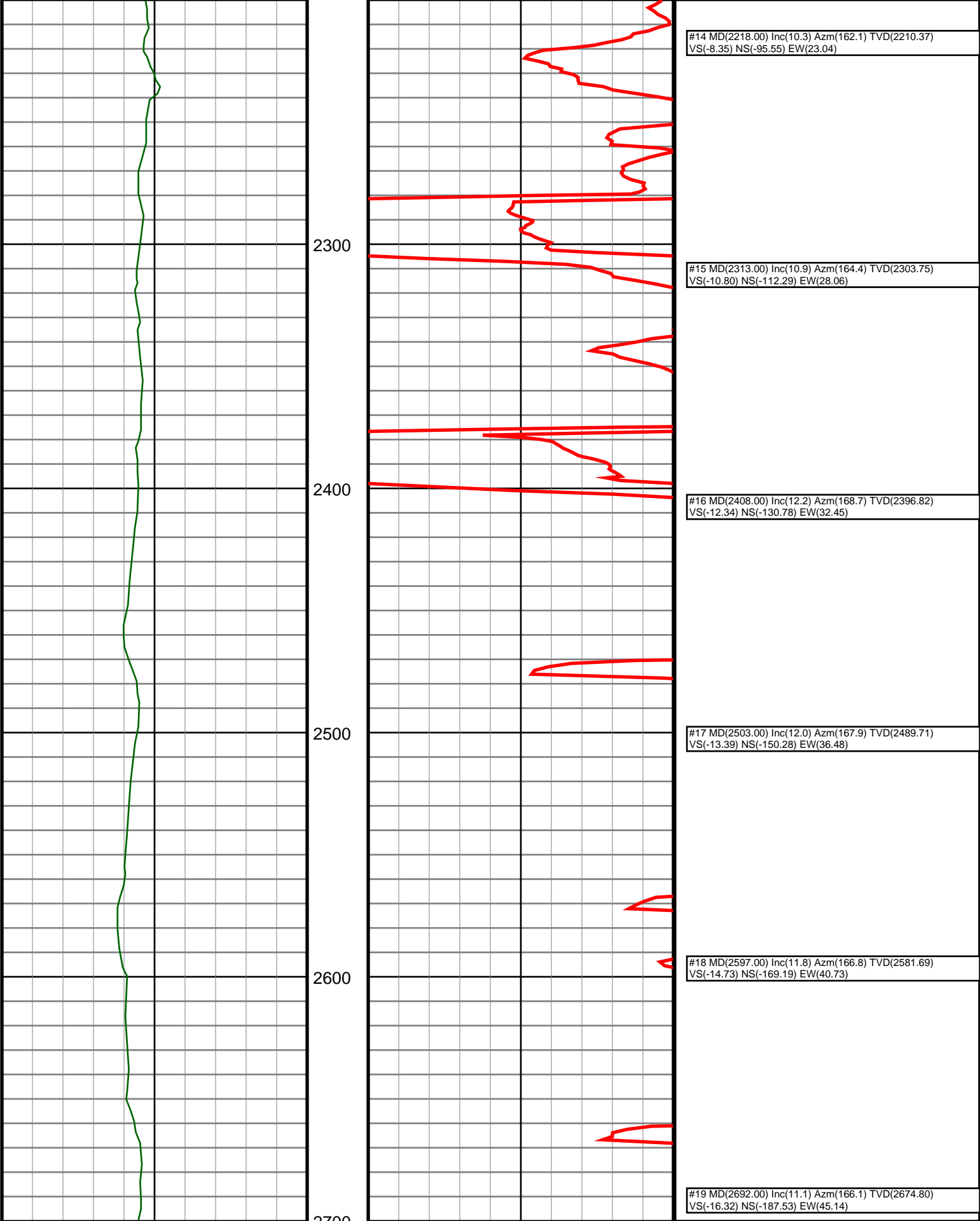
**Rmc:**

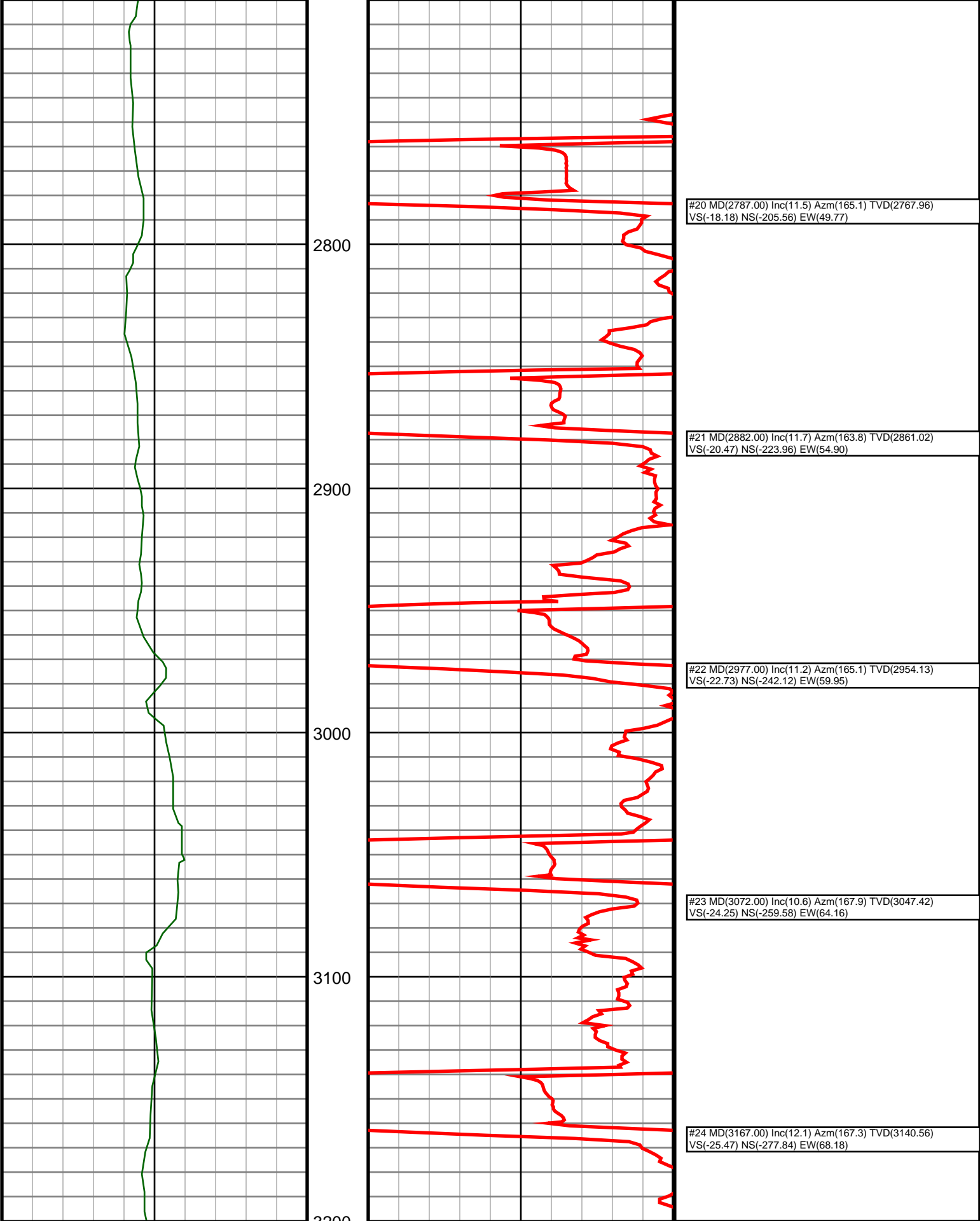
**Elevations**  
**KB:** 4736  
**GL:** 4712  
**DF:** 4736

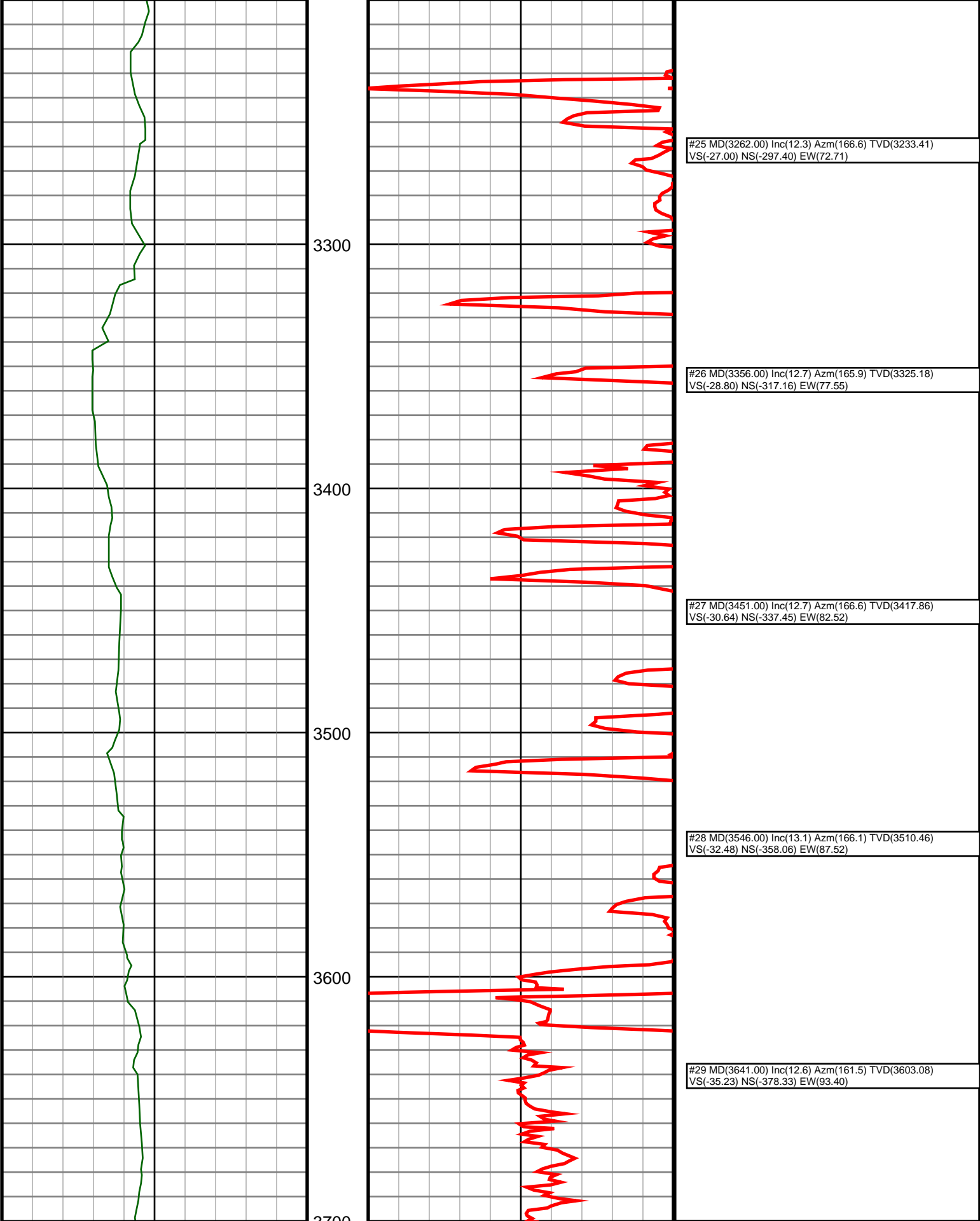
Run	Bit Size	Offsets		Depths		Dates	
		Gamma	Survey	Start	End	Start	End
1	8.75	-1.00	-1.00	0	1230	10/26/2013	10/26/2013
2	8.75	60.65	55.65	1230	4982	10/27/2013	10/28/2013
3	8.75	62.03	57.03	4982	5787	10/28/2013	10/29/2013
4	8.75	59.88	54.88	5787	6064	10/29/2013	10/29/2013
5	6.125	71.67	66.67	6064	9729	10/30/2013	11/2/2013
6							
7							
8							
9							
10							

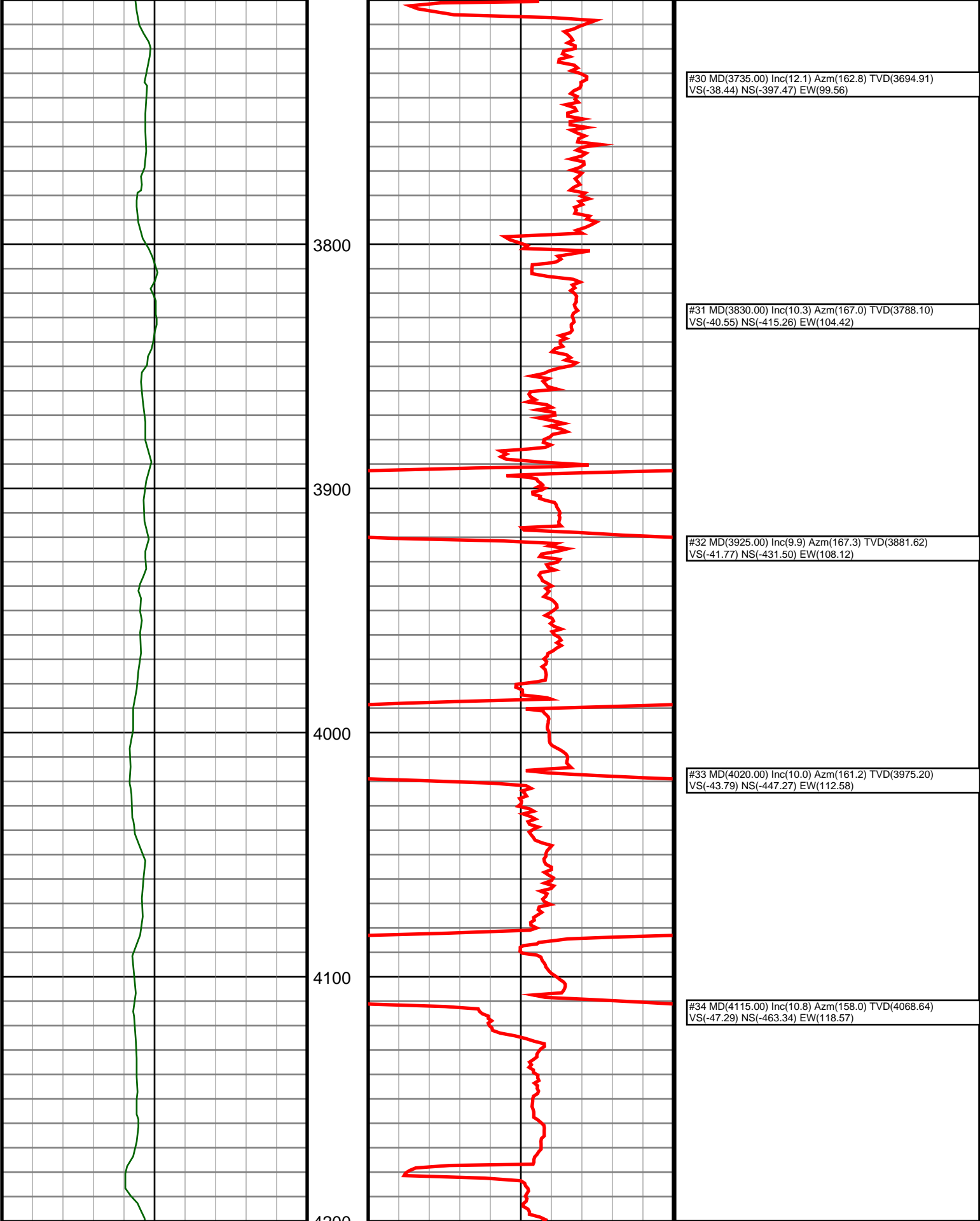


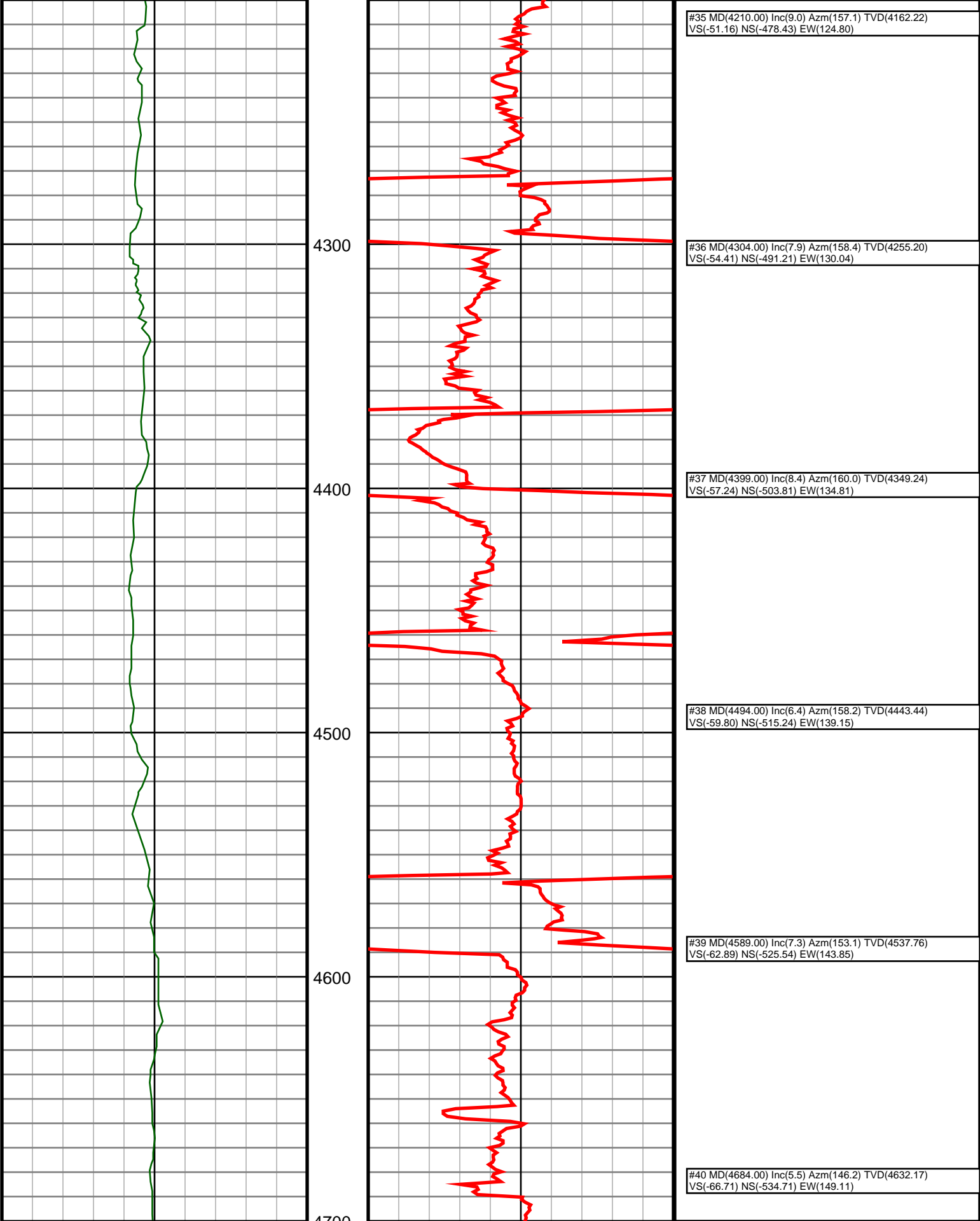




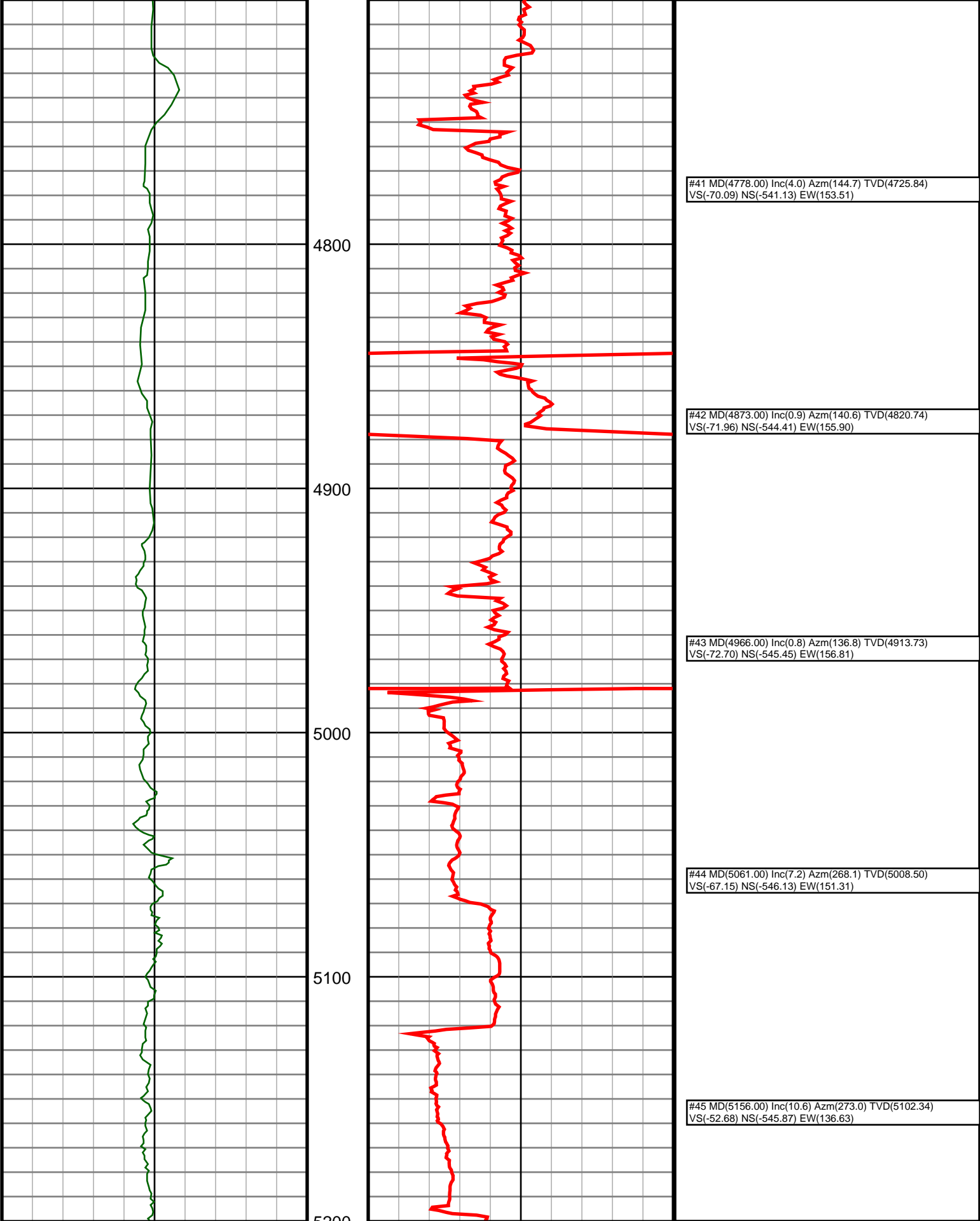


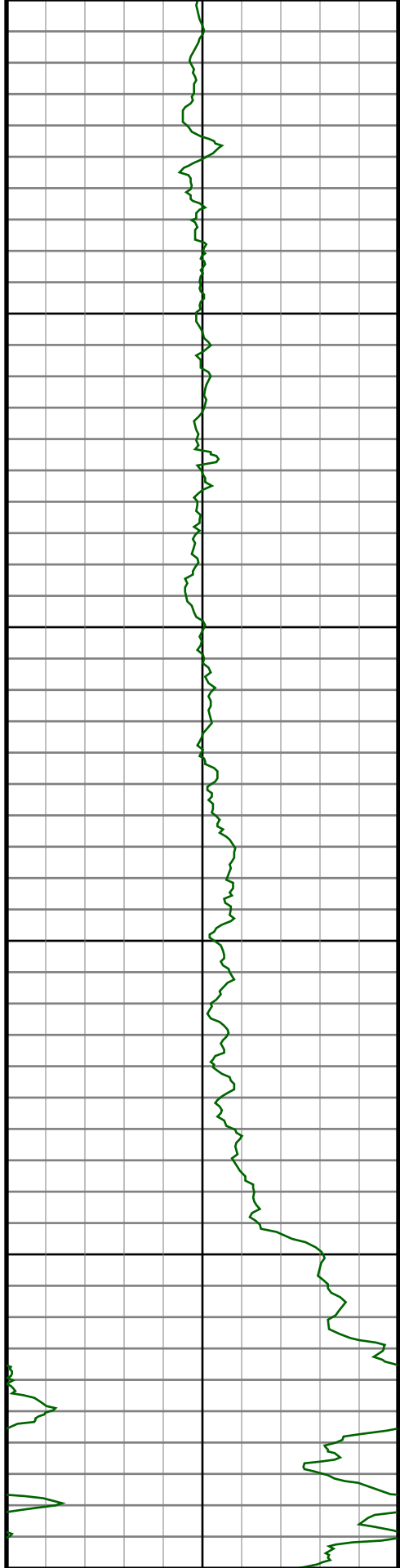












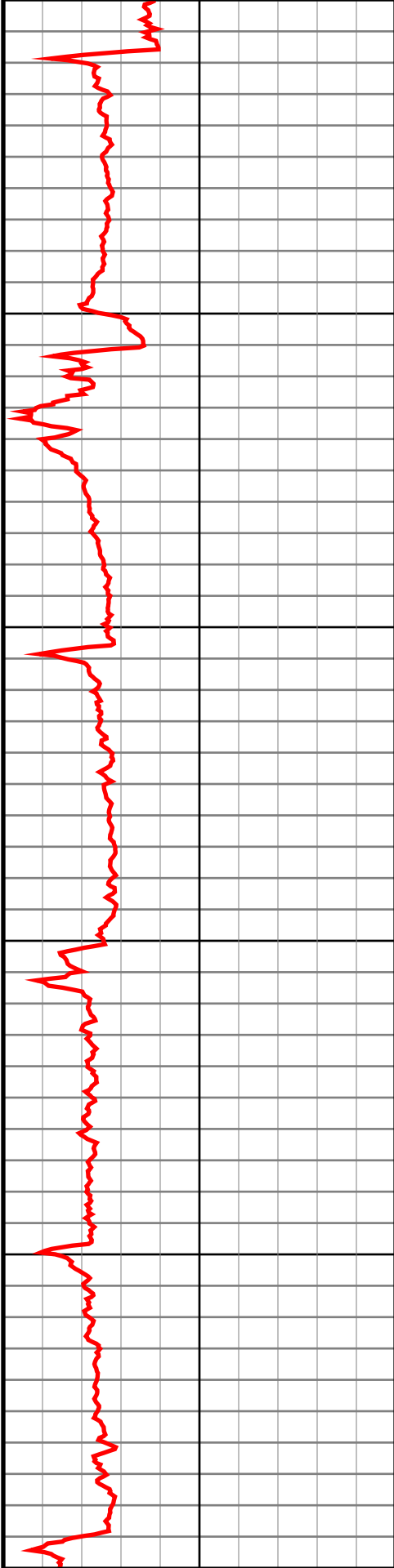
5300

5400

5500

5600

5700



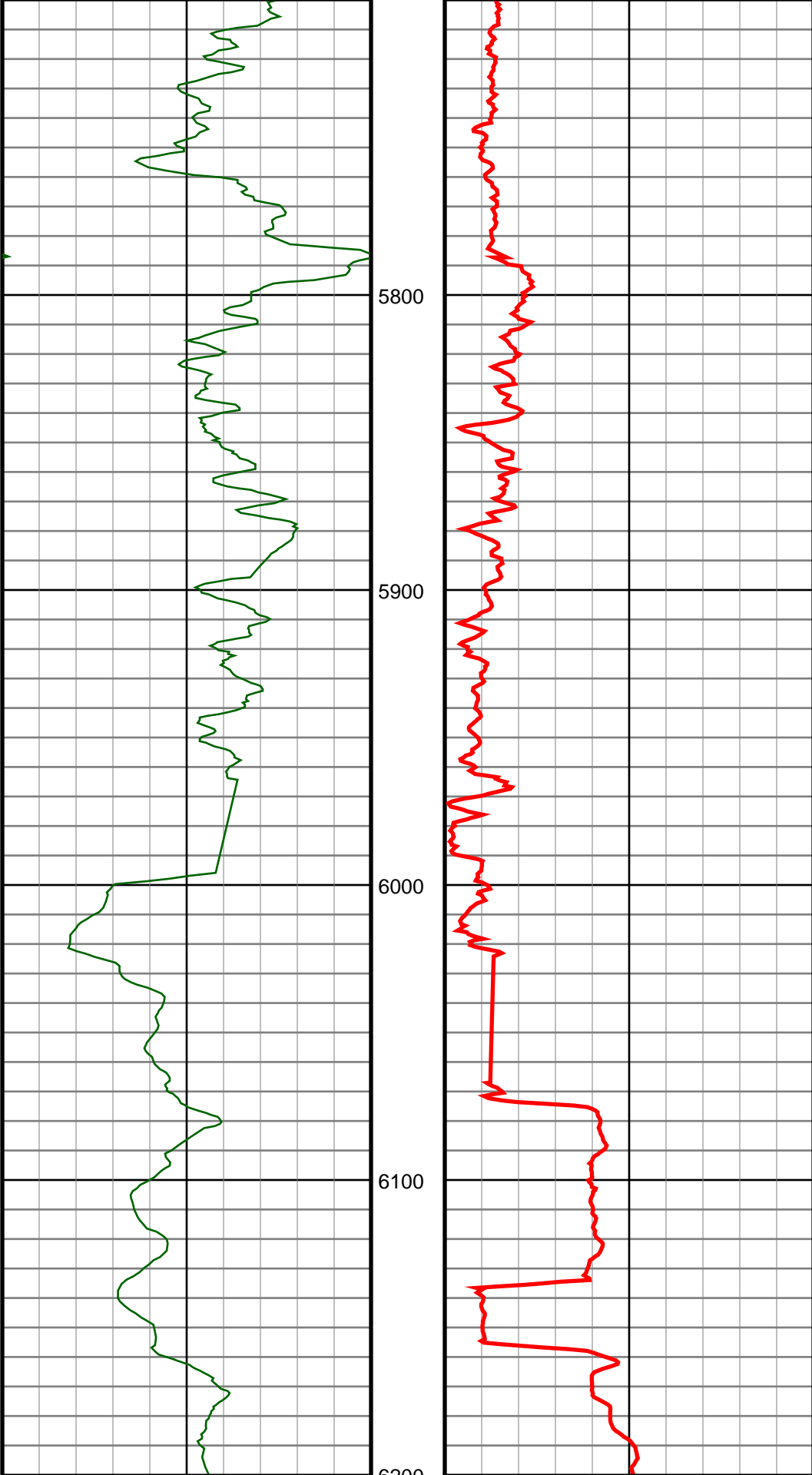
#46 MD(5251.00) Inc(15.9) Azm(275.8) TVD(5194.78)  
VS(-31.51) NS(-544.10) EW(114.94)

#47 MD(5346.00) Inc(19.0) Azm(277.9) TVD(5285.40)  
VS(-4.08) NS(-540.65) EW(86.67)

#48 MD(5440.00) Inc(26.0) Azm(284.6) TVD(5372.20)  
VS(29.56) NS(-533.35) EW(51.52)

#49 MD(5535.00) Inc(33.7) Azm(289.2) TVD(5454.55)  
VS(72.05) NS(-519.41) EW(6.41)

#50 MD(5630.00) Inc(42.9) Azm(292.0) TVD(5529.03)  
VS(123.27) NS(-498.58) EW(-48.58)



#51 MD(5725.00) Inc(52.8) Azm(291.4) TVD(5592.70)  
VS(183.97) NS(-472.60) EW(-113.95)

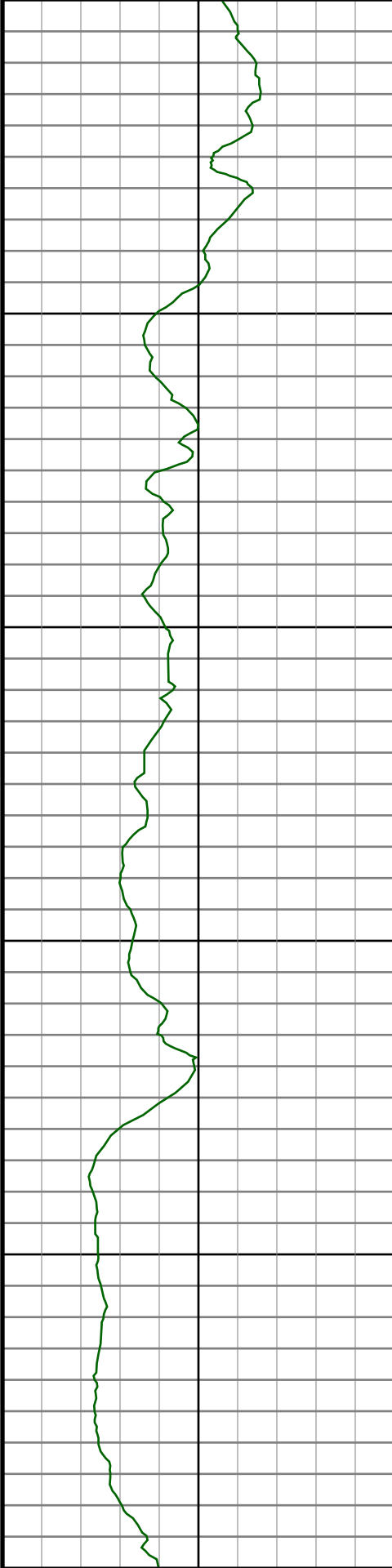
#52 MD(5822.00) Inc(64.6) Azm(287.6) TVD(5643.02)  
VS(256.96) NS(-445.15) EW(-191.98)

#53 MD(5917.00) Inc(79.2) Azm(281.1) TVD(5672.48)  
VS(339.87) NS(-423.05) EW(-279.22)

#54 MD(5970.00) Inc(85.4) Azm(278.6) TVD(5679.58)  
VS(389.64) NS(-414.08) EW(-330.94)

#55 MD(6063.00) Inc(86.3) Azm(272.5) TVD(5686.32)  
VS(479.51) NS(-405.12) EW(-423.22)

#56 MD(6154.00) Inc(87.7) Azm(270.4) TVD(5691.08)  
VS(568.96) NS(-402.82) EW(-514.05)



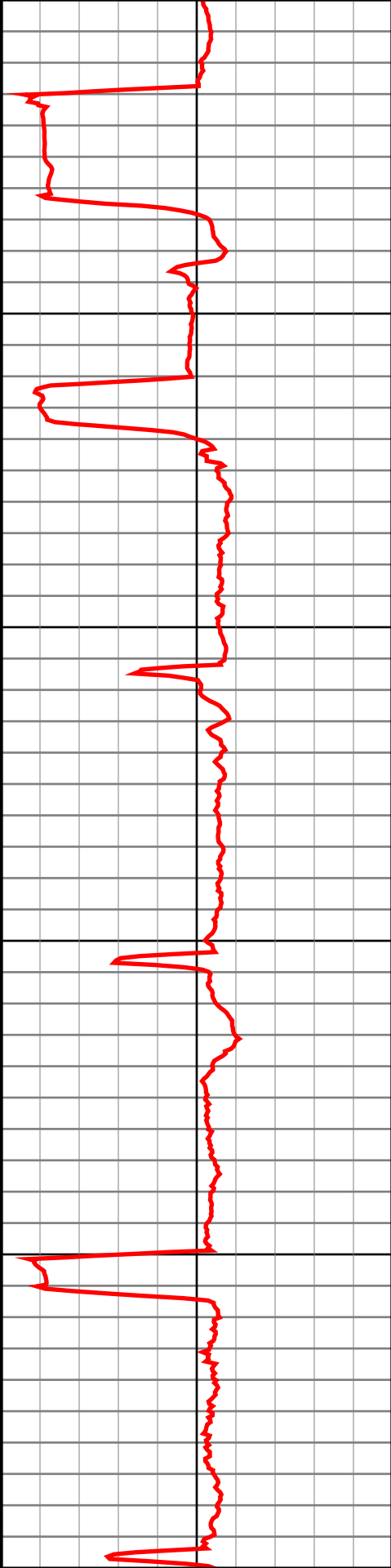
6300

6400

6500

6600

6700



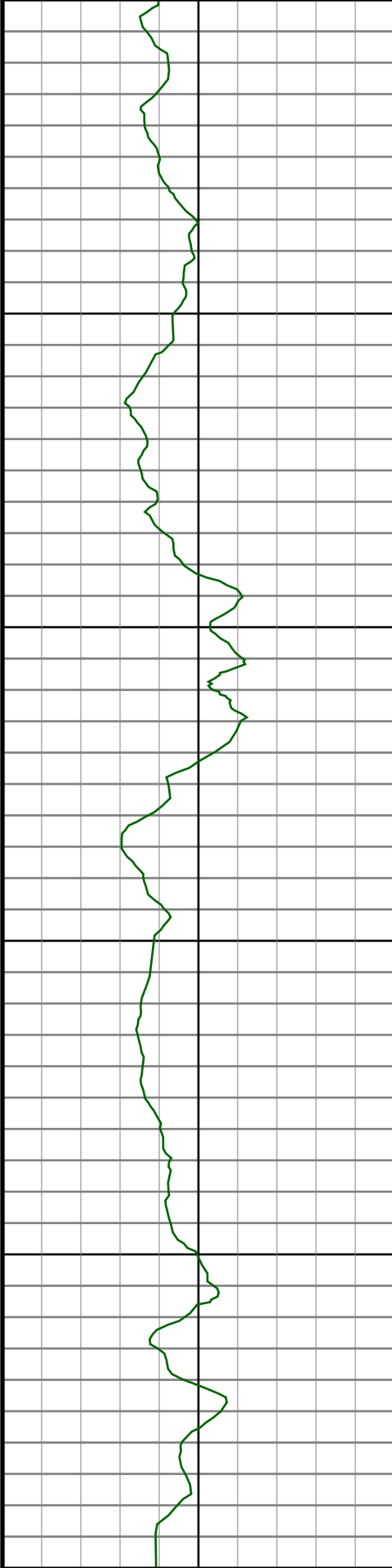
#57 MD(6247.00) Inc(87.7) Azm(267.9) TVD(5694.81)  
VS(661.01) NS(-404.20) EW(-606.96)

#58 MD(6340.00) Inc(89.0) Azm(266.1) TVD(5697.49)  
VS(753.51) NS(-409.06) EW(-699.79)

#59 MD(6434.00) Inc(88.5) Azm(266.1) TVD(5699.54)  
VS(847.16) NS(-415.46) EW(-793.55)

#60 MD(6529.00) Inc(88.9) Azm(265.4) TVD(5701.70)  
VS(941.85) NS(-422.49) EW(-888.26)

#61 MD(6624.00) Inc(90.3) Azm(264.4) TVD(5702.36)  
VS(1036.66) NS(-430.94) EW(-982.88)



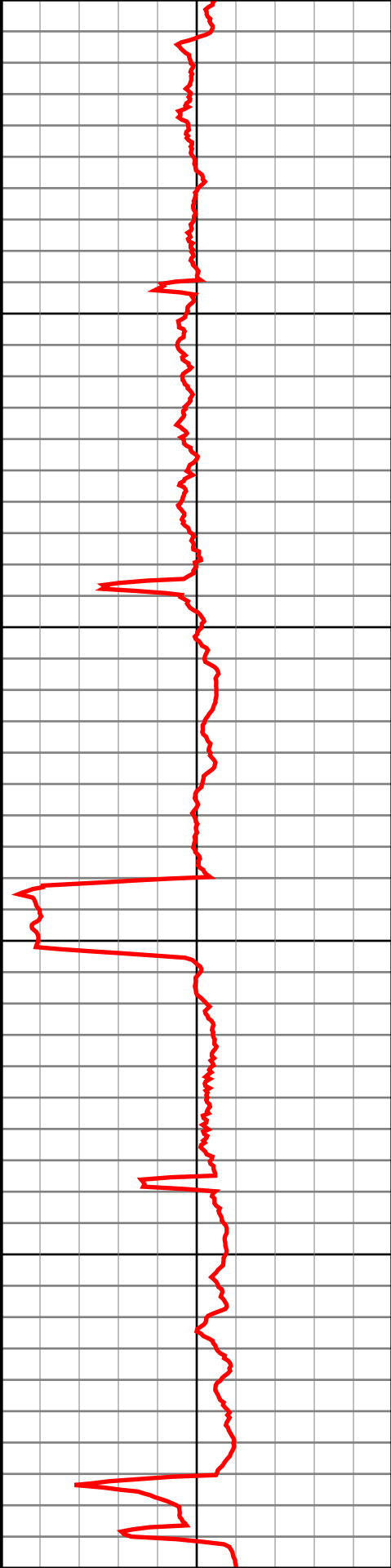
6800

6900

7000

7100

7200



#62 MD(6719.00) Inc(90.7) Azm(264.4) TVD(5701.53)  
VS(1131.52) NS(-440.21) EW(-1077.42)

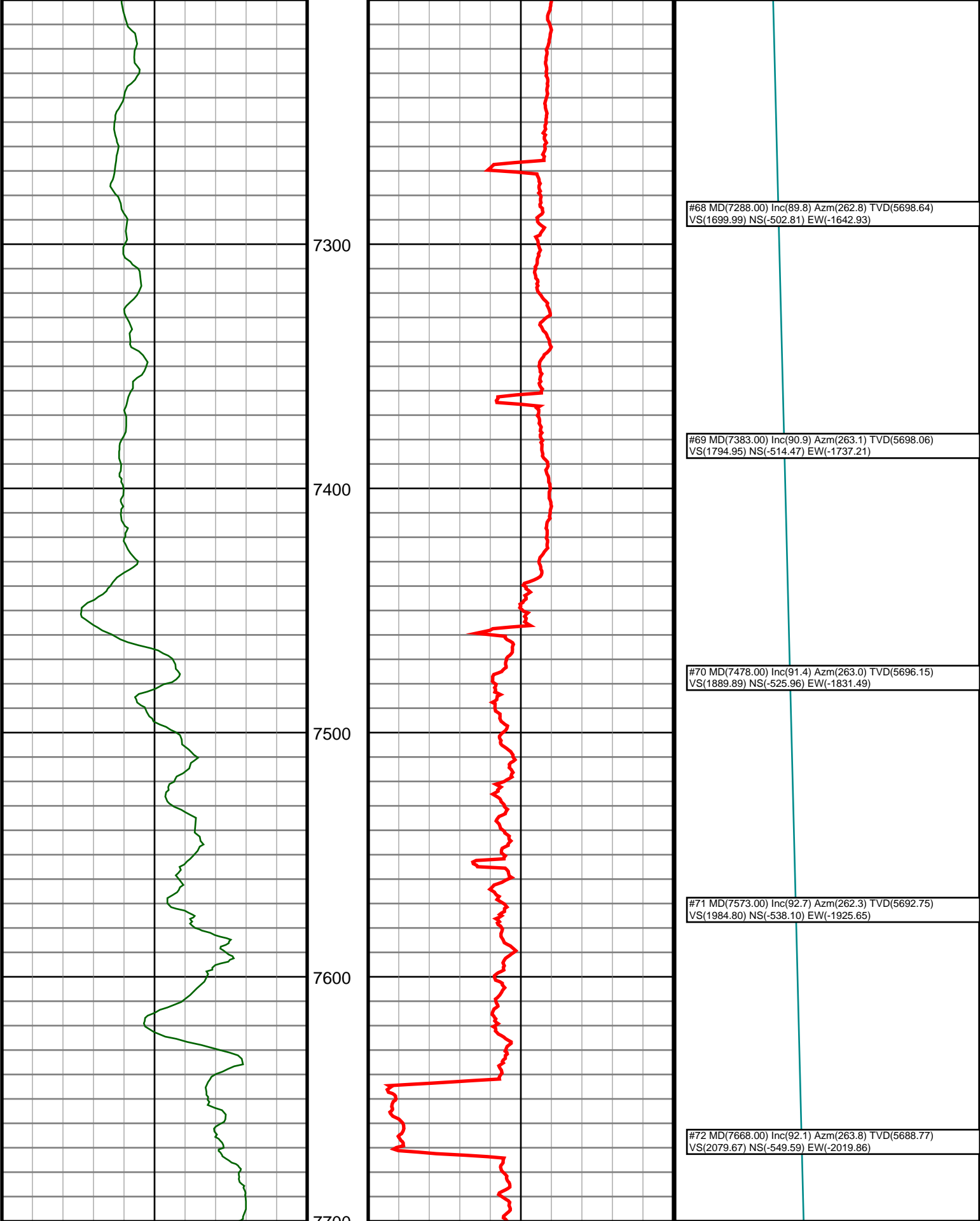
#63 MD(6814.00) Inc(90.7) Azm(264.4) TVD(5700.37)  
VS(1226.37) NS(-449.48) EW(-1171.96)

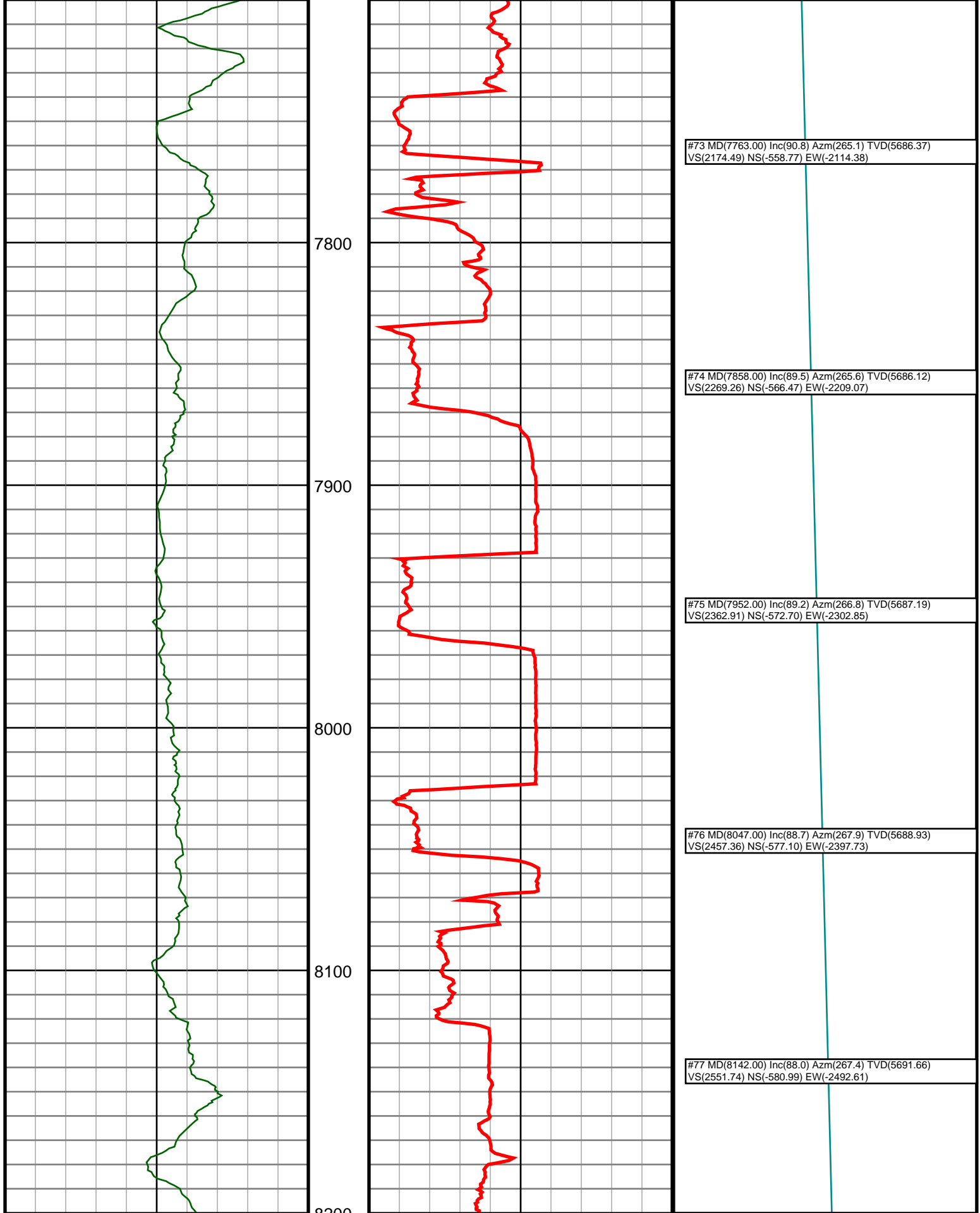
#64 MD(6909.00) Inc(91.1) Azm(263.8) TVD(5698.88)  
VS(1321.25) NS(-459.24) EW(-1266.45)

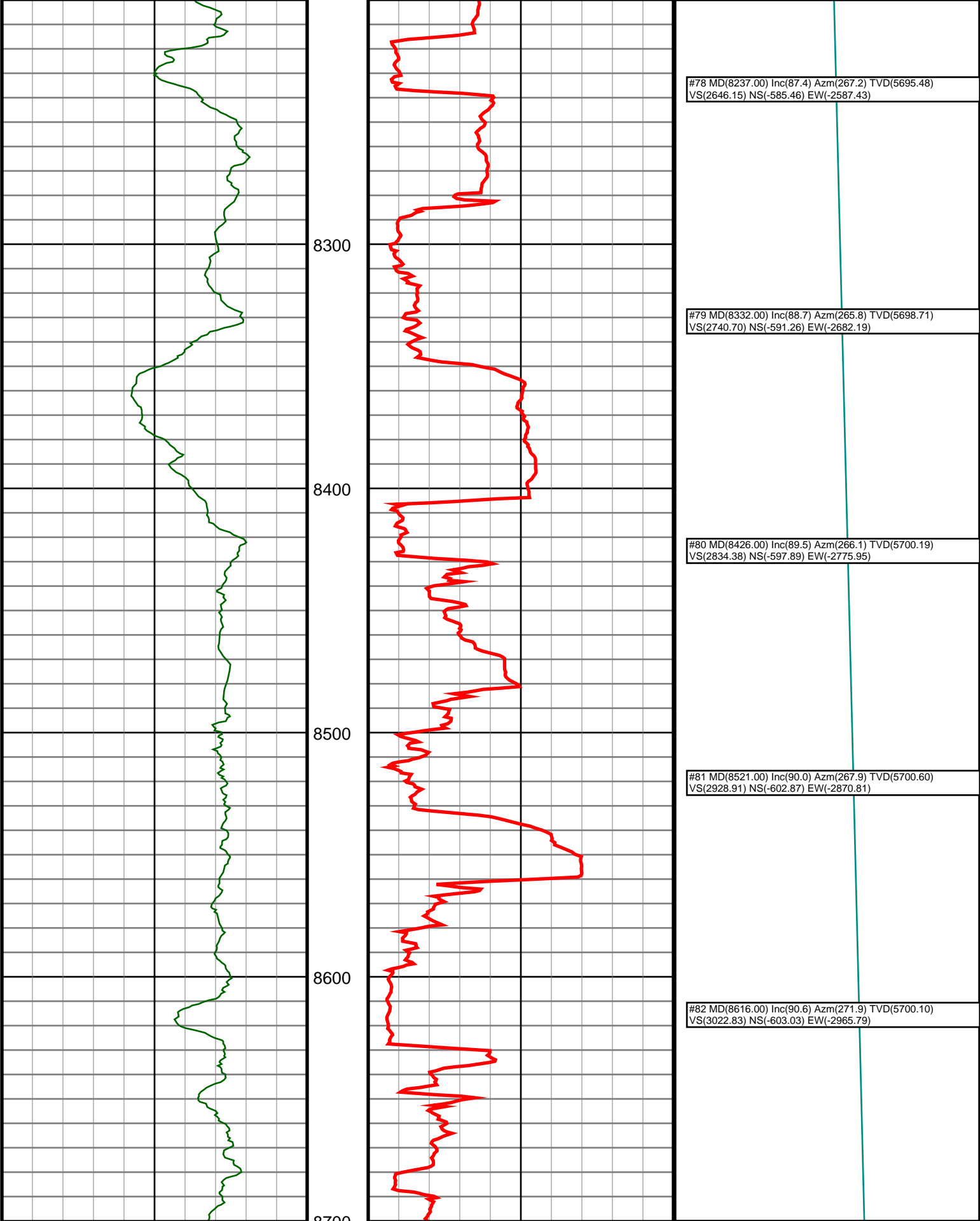
#65 MD(7003.00) Inc(89.6) Azm(263.5) TVD(5698.31)  
VS(1415.17) NS(-469.64) EW(-1359.87)

#66 MD(7098.00) Inc(89.9) Azm(263.3) TVD(5698.72)  
VS(1510.10) NS(-480.56) EW(-1454.24)

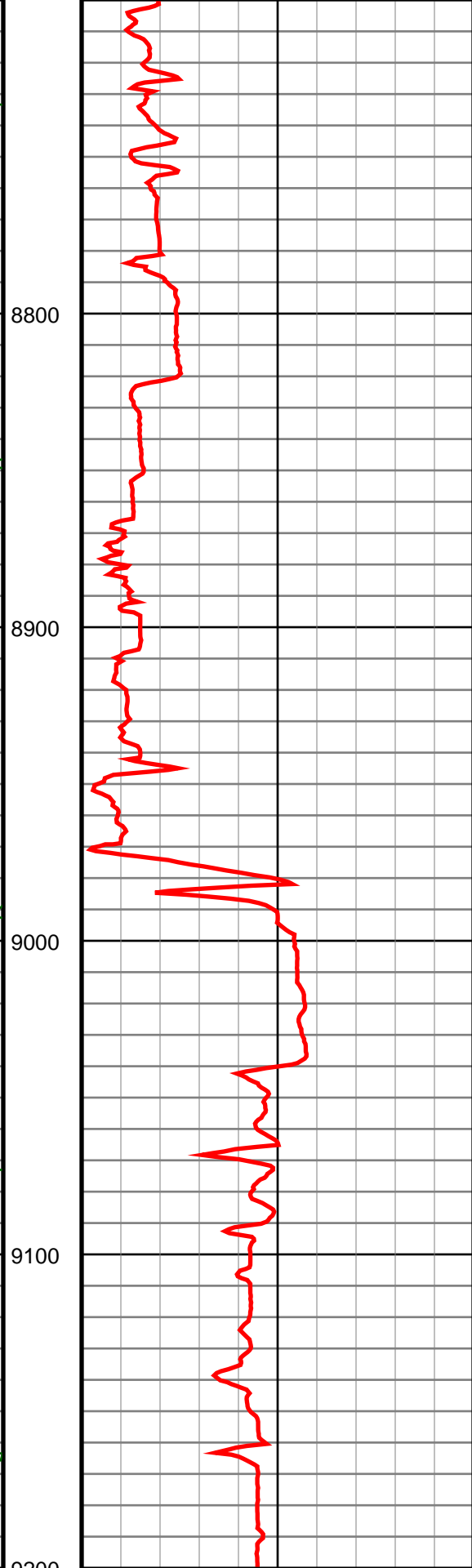
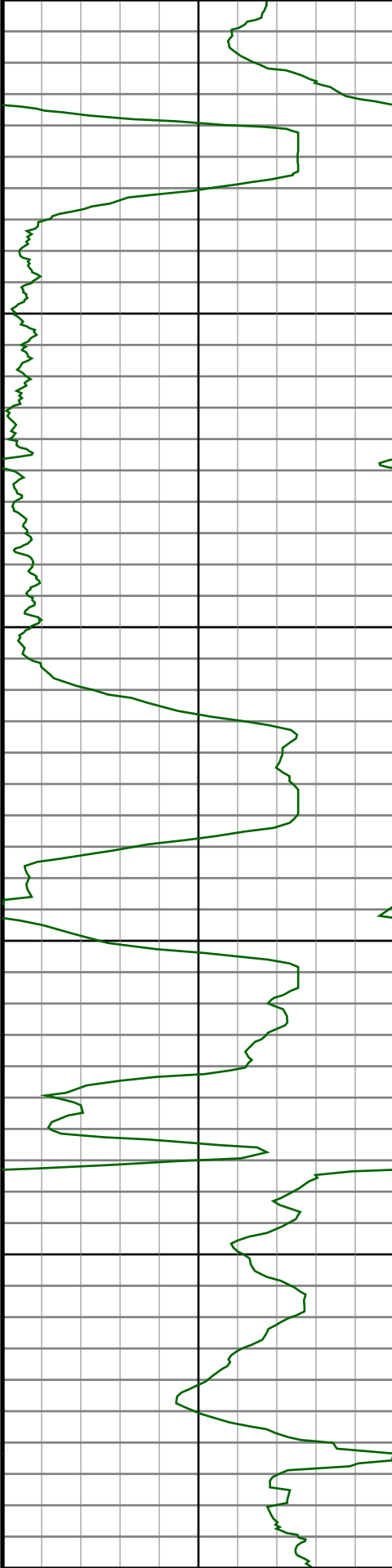
#67 MD(7193.00) Inc(90.2) Azm(263.5) TVD(5698.64)  
VS(1605.04) NS(-491.48) EW(-1548.61)











#83 MD(8711.00) Inc(90.2) Azm(271.9) TVD(5699.44)  
VS(3116.21) NS(-599.88) EW(-3060.74)

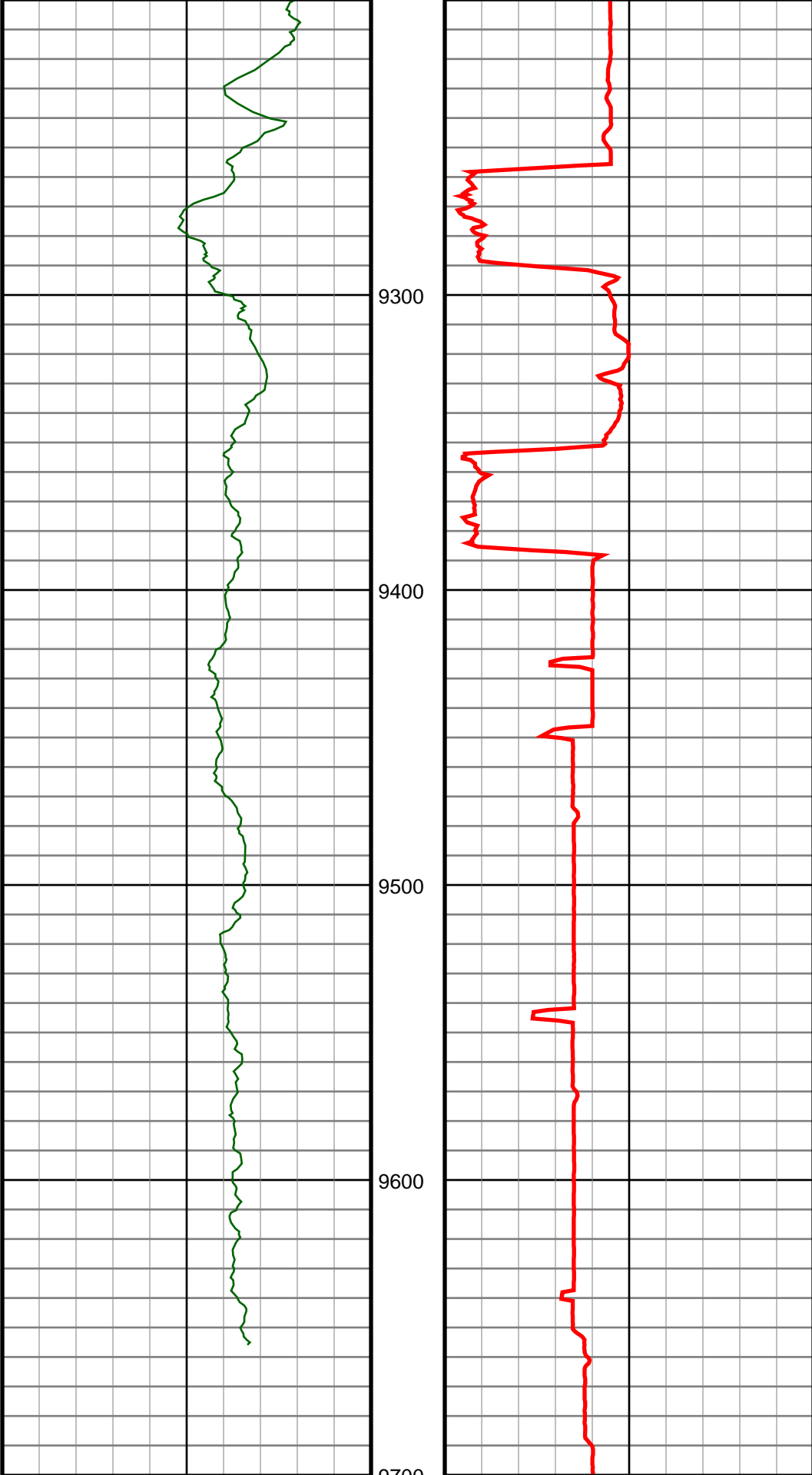
#84 MD(8806.00) Inc(90.1) Azm(271.6) TVD(5699.19)  
VS(3209.64) NS(-596.98) EW(-3155.69)

#85 MD(8900.00) Inc(90.1) Azm(271.2) TVD(5699.03)  
VS(3302.19) NS(-594.69) EW(-3249.66)

#86 MD(8995.00) Inc(90.2) Azm(270.9) TVD(5698.78)  
VS(3395.82) NS(-592.94) EW(-3344.65)

#87 MD(9090.00) Inc(90.7) Azm(271.2) TVD(5698.03)  
VS(3489.45) NS(-591.20) EW(-3439.63)

#88 MD(9185.00) Inc(91.3) Azm(270.4) TVD(5696.37)  
VS(3583.14) NS(-589.88) EW(-3534.60)



#89 MD(9280.00) Inc(90.6) Azm(269.3) TVD(5694.80)  
VS(3677.07) NS(-590.13) EW(-3629.59)

#90 MD(9374.00) Inc(89.4) Azm(268.8) TVD(5694.80)  
VS(3770.22) NS(-591.68) EW(-3723.57)

#91 MD(9469.00) Inc(89.1) Azm(268.2) TVD(5696.04)  
VS(3864.46) NS(-594.17) EW(-3818.53)

#92 MD(9564.00) Inc(89.3) Azm(267.7) TVD(5697.37)  
VS(3958.82) NS(-597.57) EW(-3913.46)

#93 MD(9659.00) Inc(88.9) Azm(266.8) TVD(5698.86)  
VS(4053.30) NS(-602.13) EW(-4008.34)

9700.0:Bit Projection @9729' INC: 88.9 AZM: 266.8  
TVD: 5700.20 VS: 4122.97

