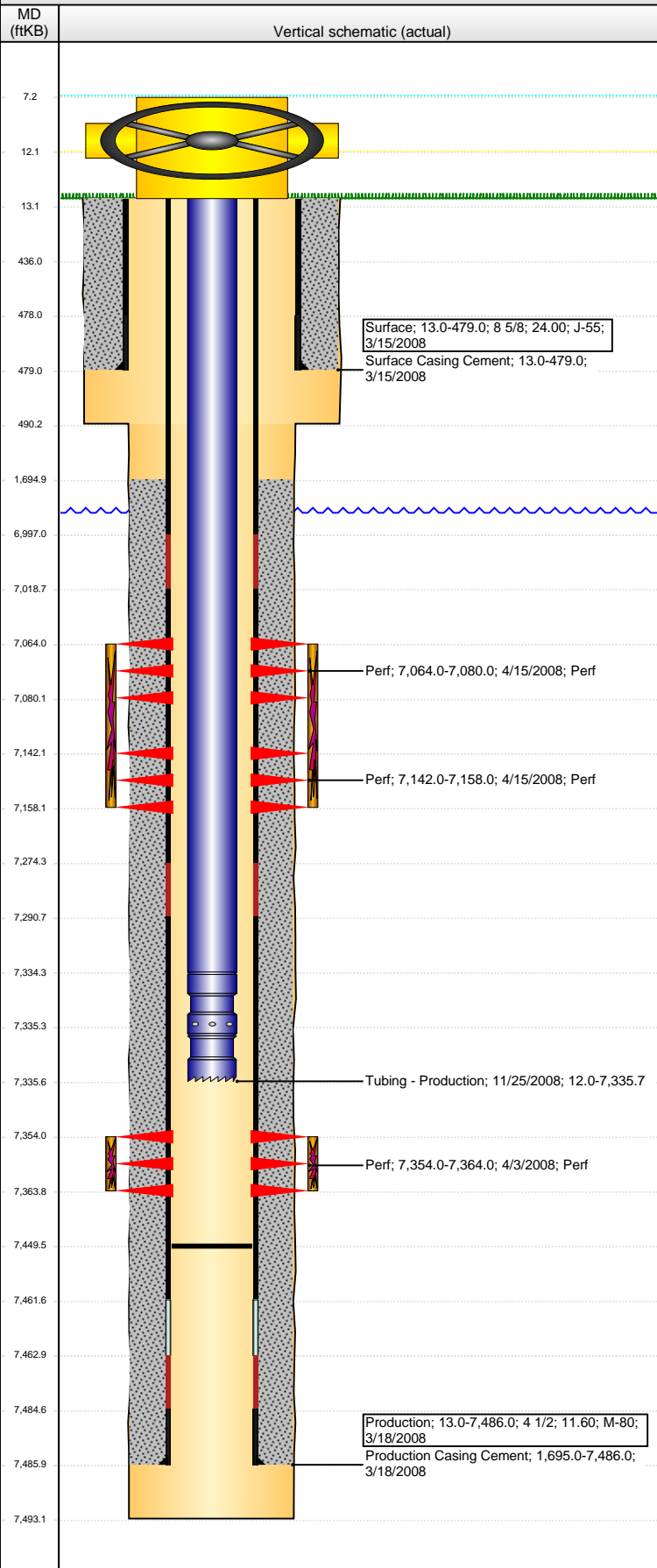


Well Name: BERIG STATE K36-29

DEVIATED - ORIGINAL HOLE, 1/15/2014 9:08:21 AM



Well Header

API	Business Unit	District	Well Config
05-123-25632	WATTENBERG	15	DEVIATED
Original KB Elevation (ft)	KB - GL / MSL (ftKB)	Spud Date	P & A Date
4,824.00	13.00	3/15/2008	

Comment

DEVIATED WELL; BHL IS IN 25-4N-66W; TARGET DEPTH = 7493' MD

Directions To Well

From the intersection of CR 35 and CR 40, travel East approximately .25 miles to an existing tank battery site. Just past this site turn South, traveling approximately 600' to wellsite.

Congressional Location

Quarter 1	Quarter 2	Quarter 3	Quarter 4	Section	Township	Twntshp N...	Range	Rng E/W Dir
		NE	NW	36	4	N	66	W

Bottom Hole Location

North-South Distance (ft)	From N or S Line	East-West Distance (ft)	From E or W Line
190.0	FSL	1,320.0	FWL

Plug Back Total Depths

Date	Depth (ftKB)	Method	Com
3/18/2008	7,461.0	CASING TALLY	
11/25/2008	7,449.4	TAG	LAST C/O TO PBTD

Wellbore Sections

Section Des	Size (in)	Act Top, MD (ftKB)	Act Btm, MD (ftKB)
SURFACE	12 1/4	13.0	490.0
PRODUCTION	7 7/8	490.0	7,493.0

Zone Statuses

Zone Name	Status Date	Status	Job
NIOBRARA	4/29/2008	PR	DRILLING/COMPLETION - ORIGINAL, 3/15/2008 09:30
CODELL	4/29/2008	PR	DRILLING/COMPLETION - ORIGINAL, 3/15/2008 09:30

Casing Strings

Surface, 479.0ftKB

Casing Description	Run Date	OD (in)	Wt/Len (l...)	Grade	Top, MD (ft...)	MD (ftKB)
Surface	3/15/2008	8 5/8	24.00	J-55	13.0	479.0

Production, 7,486.0ftKB

Casing Description	Run Date	OD (in)	Wt/Len (l...)	Grade	Top, MD (ft...)	MD (ftKB)
Production	3/18/2008	4 1/2	11.60	M-80	13.0	7,486.0

Cement

Description	Top Depth (ftKB)	Bottom Depth (ftKB)
Surface Casing Cement	13.0	479.0
Production Casing Cement	1,695.0	7,486.0

Tubing Components

Item Des	OD (in)	Wt (lb/ft)	Grade	Jts	Len (ft)	Btm (ftKB)	Btm (TVD) (ftKB)
Tubing	2 3/8	4.70	J-55	237	7,322.25	7,334.2	
Pump Seating Nipple	2 3/8			1	1.10	7,335.3	7,257.2
Notched collar	2 3/8			1	0.40	7,335.7	7,257.6

Perforation Data

Zone	Bnch/St g	Entered Shot Total	Top (ftKB)	Btm (ftKB)	Date
NIOBRARA, ORIGINAL HOLE	A	64	7,064.00	7,080.00	4/15/2008
NIOBRARA, ORIGINAL HOLE	B	64	7,142.00	7,158.00	4/15/2008
CODELL, ORIGINAL HOLE		40	7,354.00	7,364.00	4/3/2008

Stimulations & Treatments

Date	Zone	Primary Job Type
4/15/2008	CODELL, ORIGINAL HOLE	DRILLING/COMPLETION - ORIGINAL
Technical Result	Tech Result Details	Tech Result Note
Success	According to Plan	

Comment (CODELL)

Date	Zone	Primary Job Type
4/15/2008	NIOBRARA, ORIGINAL HOLE	DRILLING/COMPLETION - ORIGINAL
Technical Result	Tech Result Details	Tech Result Note
Success	According to Plan	

Comment (NIOBRARA)

Other In Hole

Run Date	Des	OD (in)	Top (ftKB)	Btm (ftKB)

Well Name: BERIG STATE K36-29

DEVIATED - ORIGINAL HOLE, 1/15/2014 9:08:23 AM

Logs

Date	Type	Top, MD (ftKB)	Btm, MD (ftKB)
3/24/2008	CBL/CCL/GR	0.0	7,423.0
3/25/2008	PULSED NEUTRON	400.0	7,420.0
3/15/2013	GYRO	13.0	7,300.0

