



Encana Oil & Gas
1949 Pyrite Rd Casper Wy 82604

Job # 135402

5":100' - MD

9/15/2013 2:06:04 PM

Oper. Company: Ensign

Country: Weld

State / Province: Co

County / Parish:

Started: 09/08/2013 08:00 AM

API/UWI: 051233743900

Field: DJ Basin

Well: Marcus State 3D-36H

Rig: 135

Ended: 09/15/2013 03:30 AM

Personnel

Day Hand: Ken Wagoner

Night Hand: Brett Giannino

Comp. Emp: Cathedral Energy Service

Location

Latitude: 40.088280

Longitude: -104.730030

Elev. GL: 5039

Elev. DF: 5052

Elev. KB: 5052

Hole Data

Size	From	To
8.75	1228	7643
6.13	7643	11900

Casing Data

Size	From	To
7in	0	7630
4in	0	11900

Bit Sizes

Size	From	To
8.75	1228	7643
6.13	7643	11900

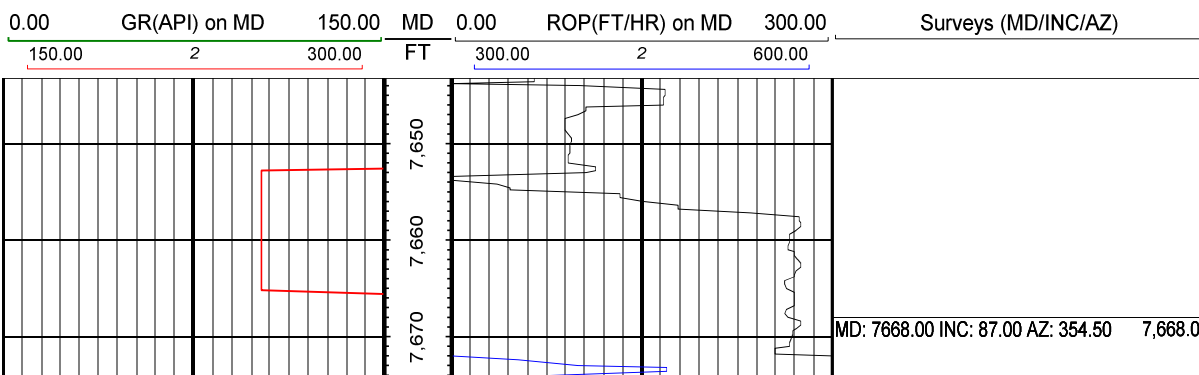
Mud Data

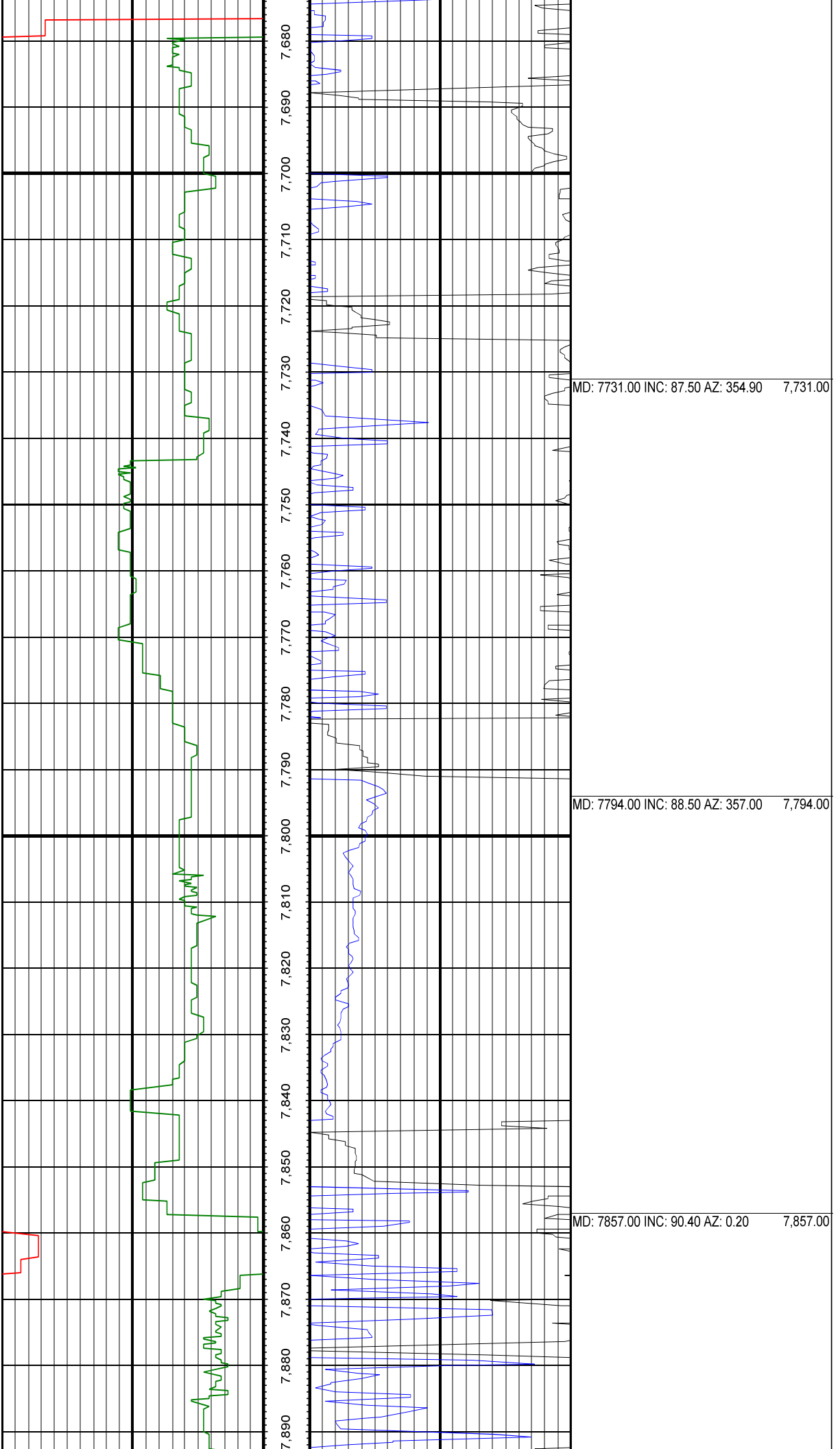
Type	Weight	Density	Viscosity	Rm	Rmf	Rmc	From	To
LSND	10.10	10.10	38.0				1228	7643
LSND	10.20	10.20	35.0				7643	11900

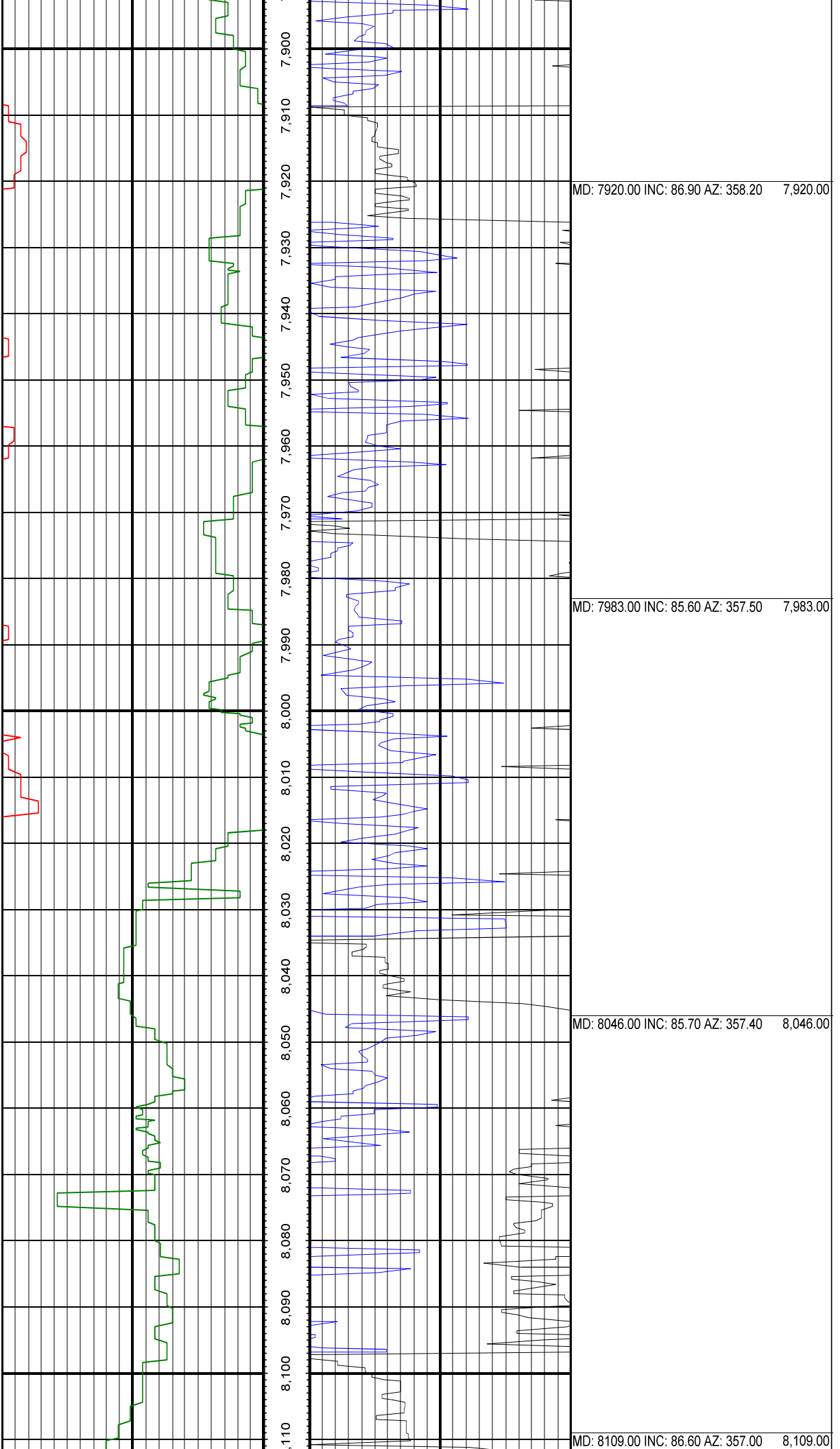
Tool Run Data

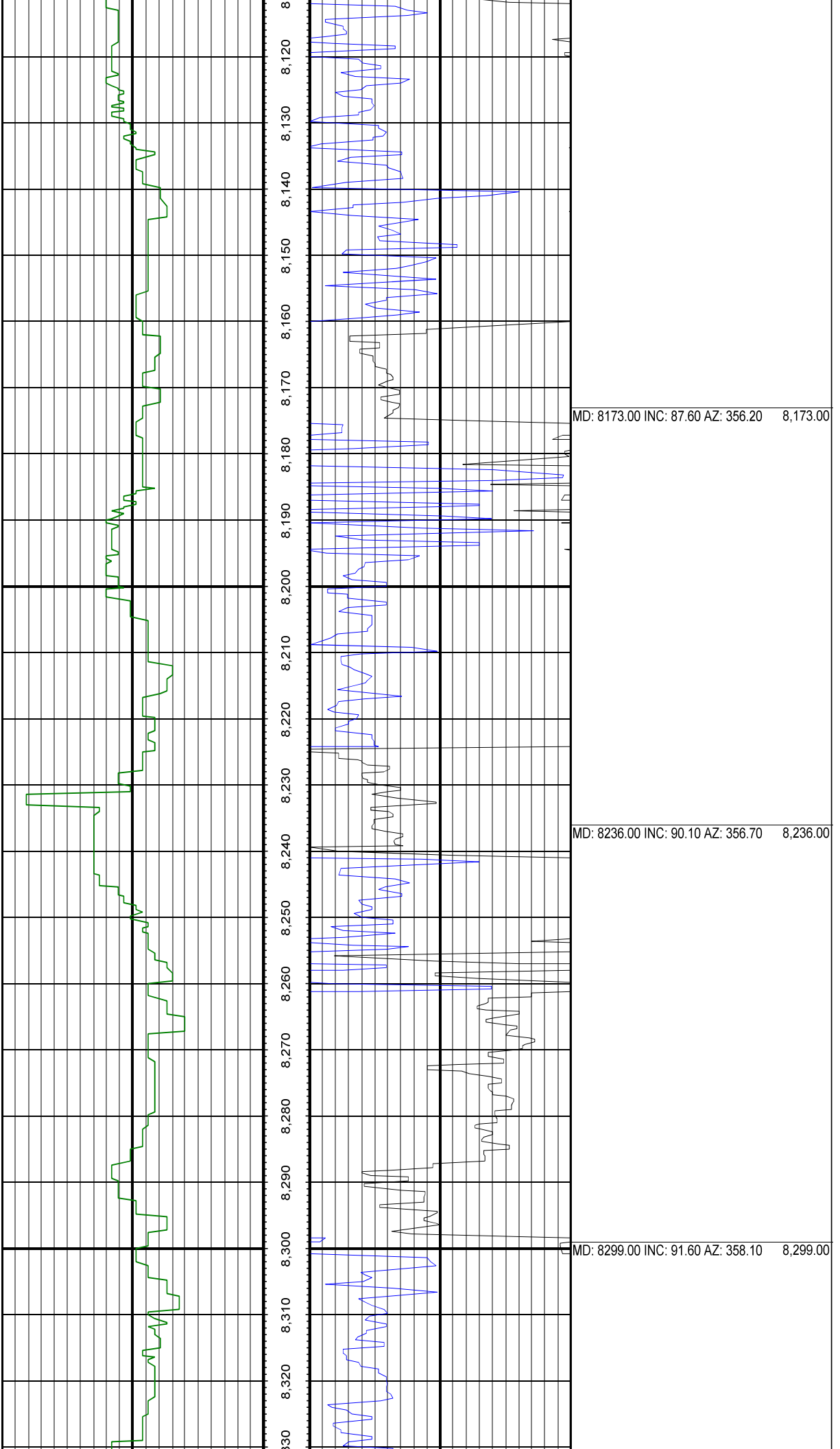
Serial Number	Gamma Offset	Resist. Offset	Start Time	Start Depth	End Time	End Depth
1182	53	41	9/8/2013 3:00:47 PM	1228	9/10/2013 7:00:47 PM	7643
1403	51	38.98	9/13/2013 4:00:36 AM	7643	9/15/2013 3:30:36 AM	11900

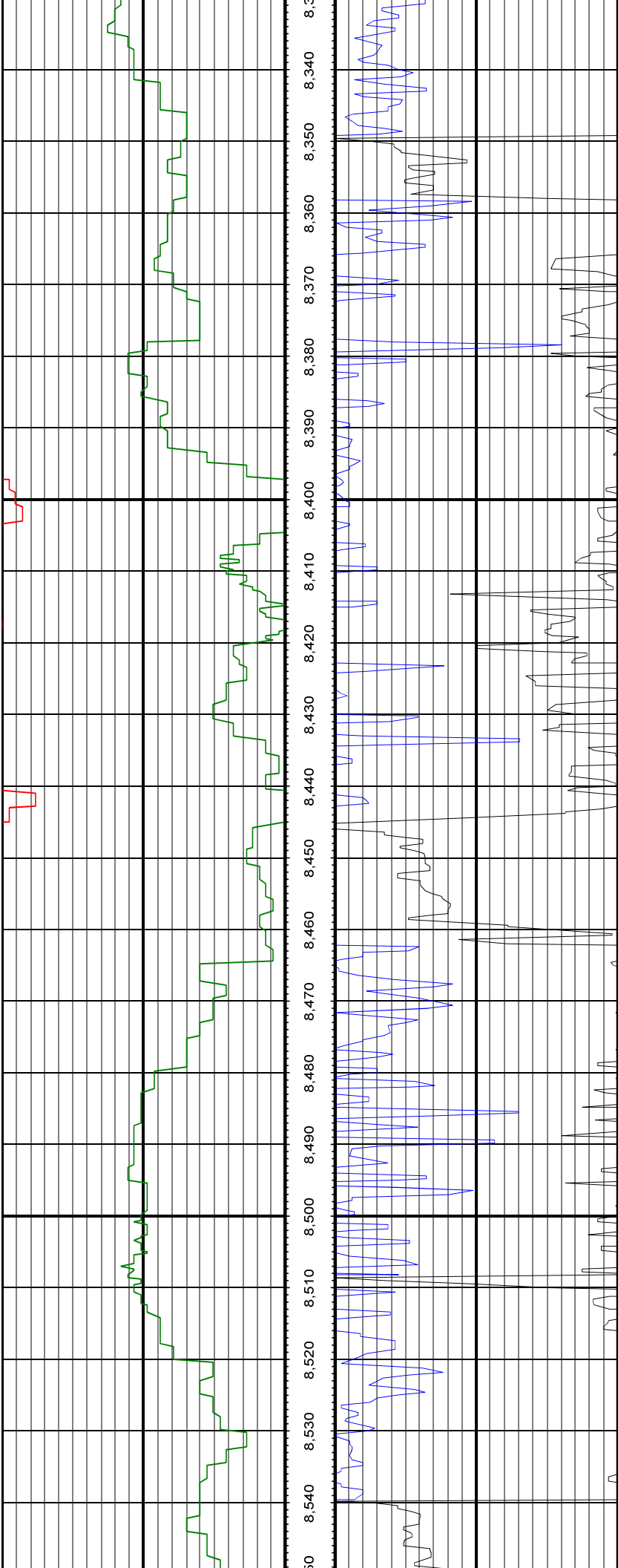
All interpretations are opinions based on inferences from electrical or other measurements and we cannot and do not guarantee the accuracy or correctness of any interpretation, and we shall not except in the case of gross or willful negligence on our part, be liable or responsible for any loss, cost damages or expenses incurred or sustained by anyone resulting from an interpretation made by any of our officers, agents, or employees.





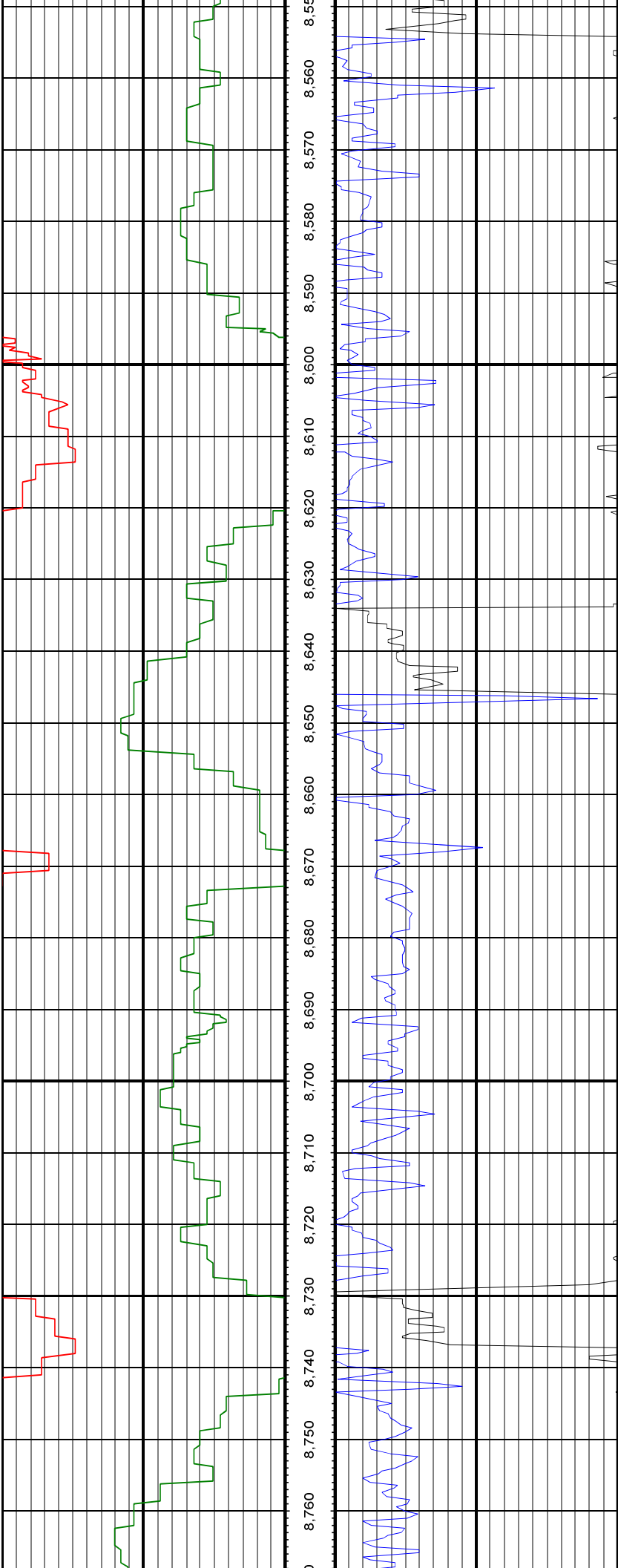






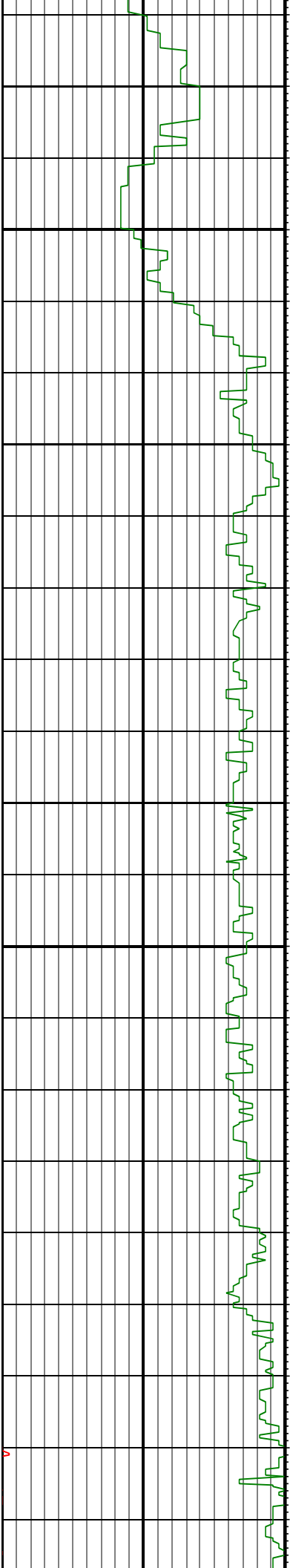
MD: 8394.00 INC: 92.90 AZ: 358.90 8,394.00

MD: 8488.00 INC: 92.00 AZ: 359.50 8,488.00

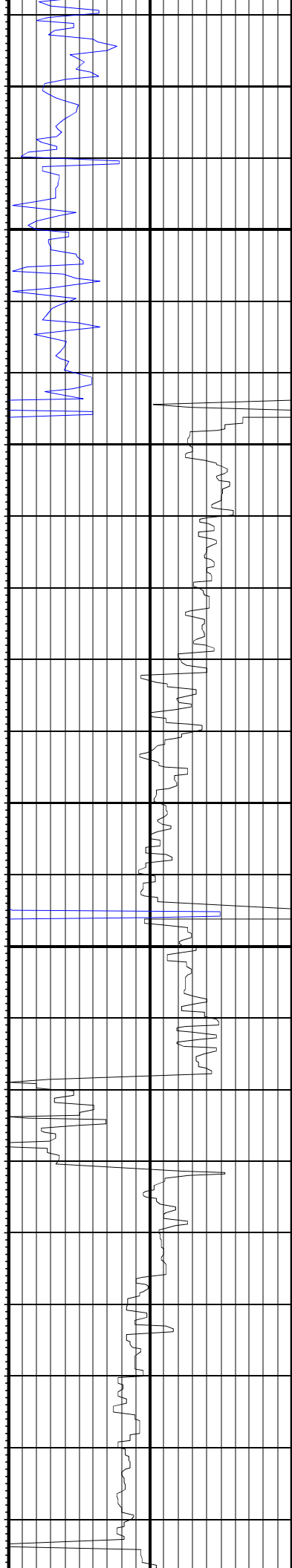


MD: 8583.00 INC: 91.40 AZ: 0.90 8,583.00

MD: 8678.00 INC: 89.00 AZ: 0.50 8,678.00



8,770 8,780 8,790 8,800 8,810 8,820 8,830 8,840 8,850 8,860 8,870 8,880 8,890 8,900 8,910 8,920 8,930 8,940 8,950 8,960 8,970 8,980

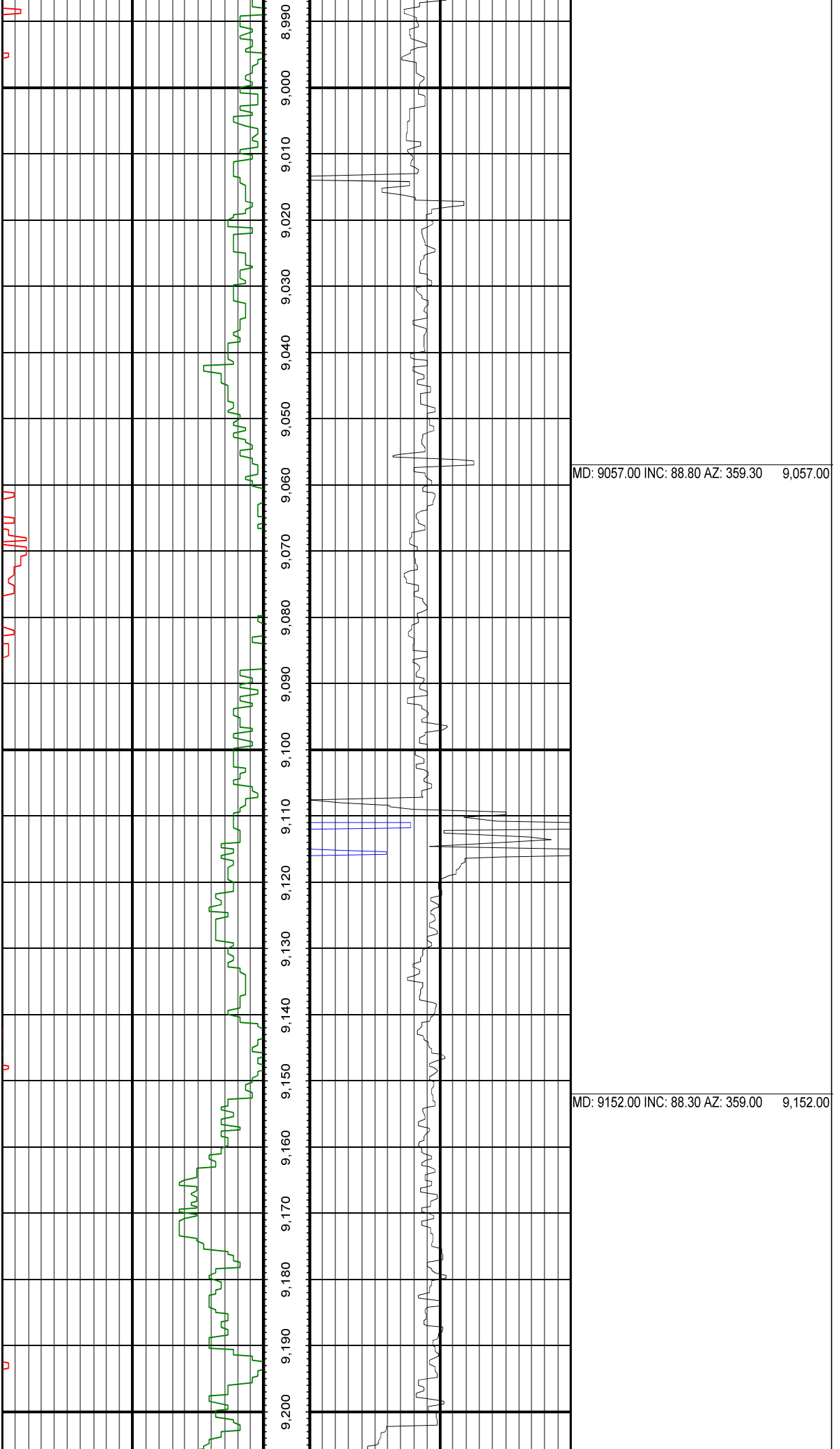


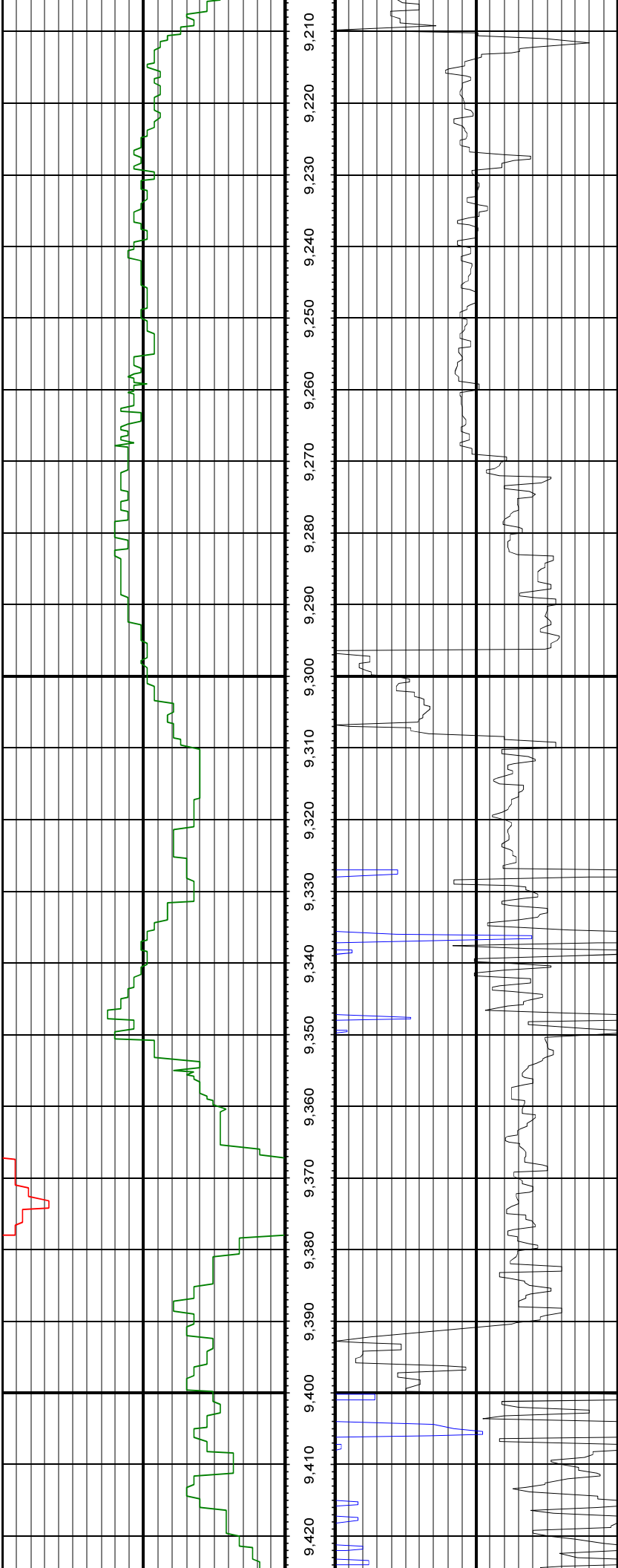
8,770 8,780 8,790 8,800 8,810 8,820 8,830 8,840 8,850 8,860 8,870 8,880 8,890 8,900 8,910 8,920 8,930 8,940 8,950 8,960 8,970 8,980

MD: 8773.00 INC: 90.80 AZ: 359.30 8,773.00

MD: 8867.00 INC: 90.80 AZ: 358.50 8,867.00

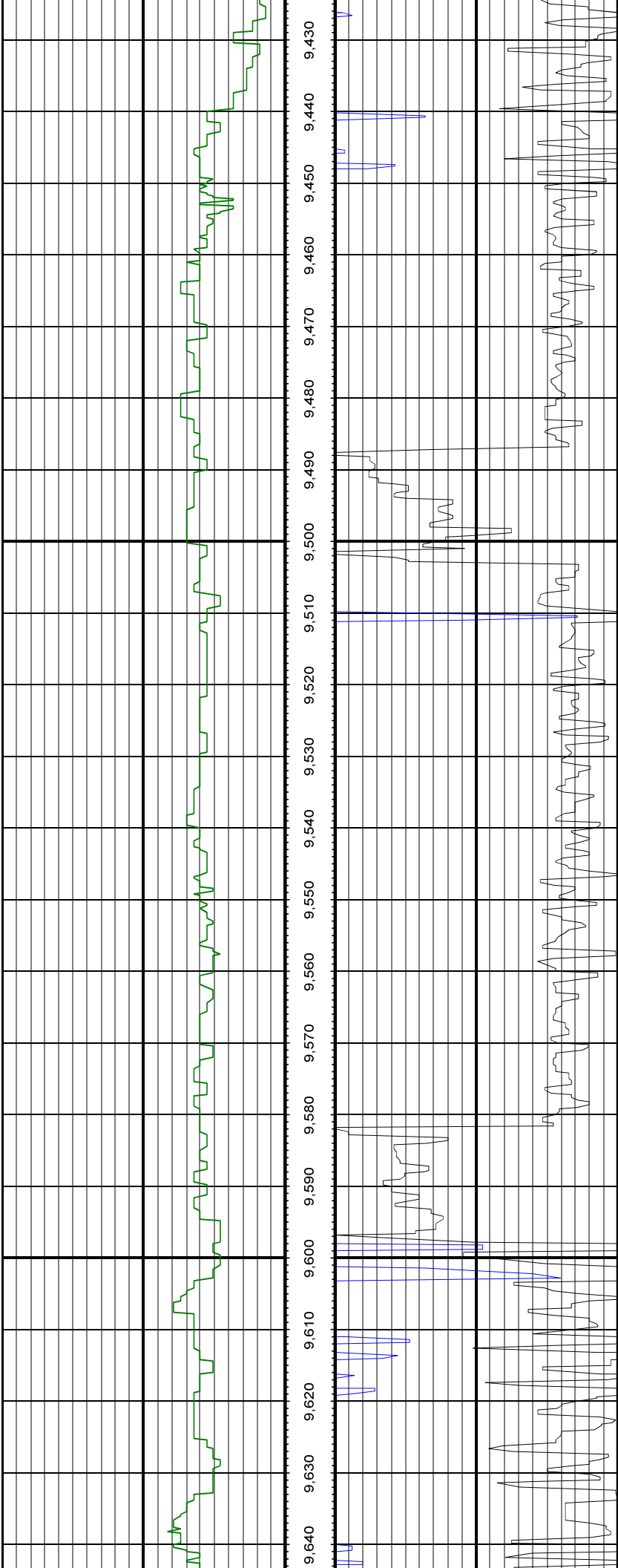
MD: 8962.00 INC: 89.30 AZ: 359.30 8,962.00





MD: 9246.00 INC: 88.90 AZ: 358.90 9,246.00

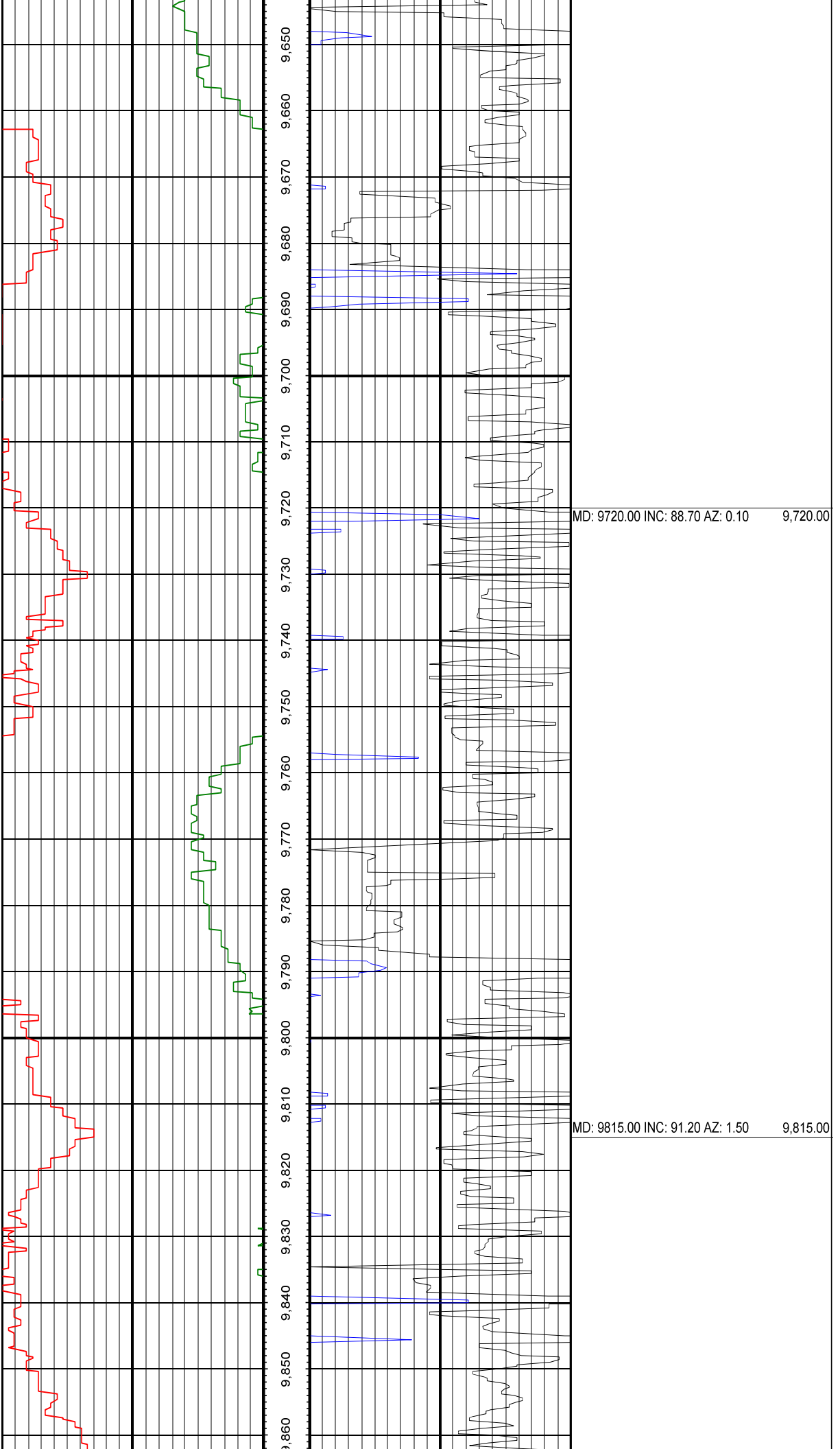
MD: 9341.00 INC: 89.80 AZ: 359.20 9,341.00

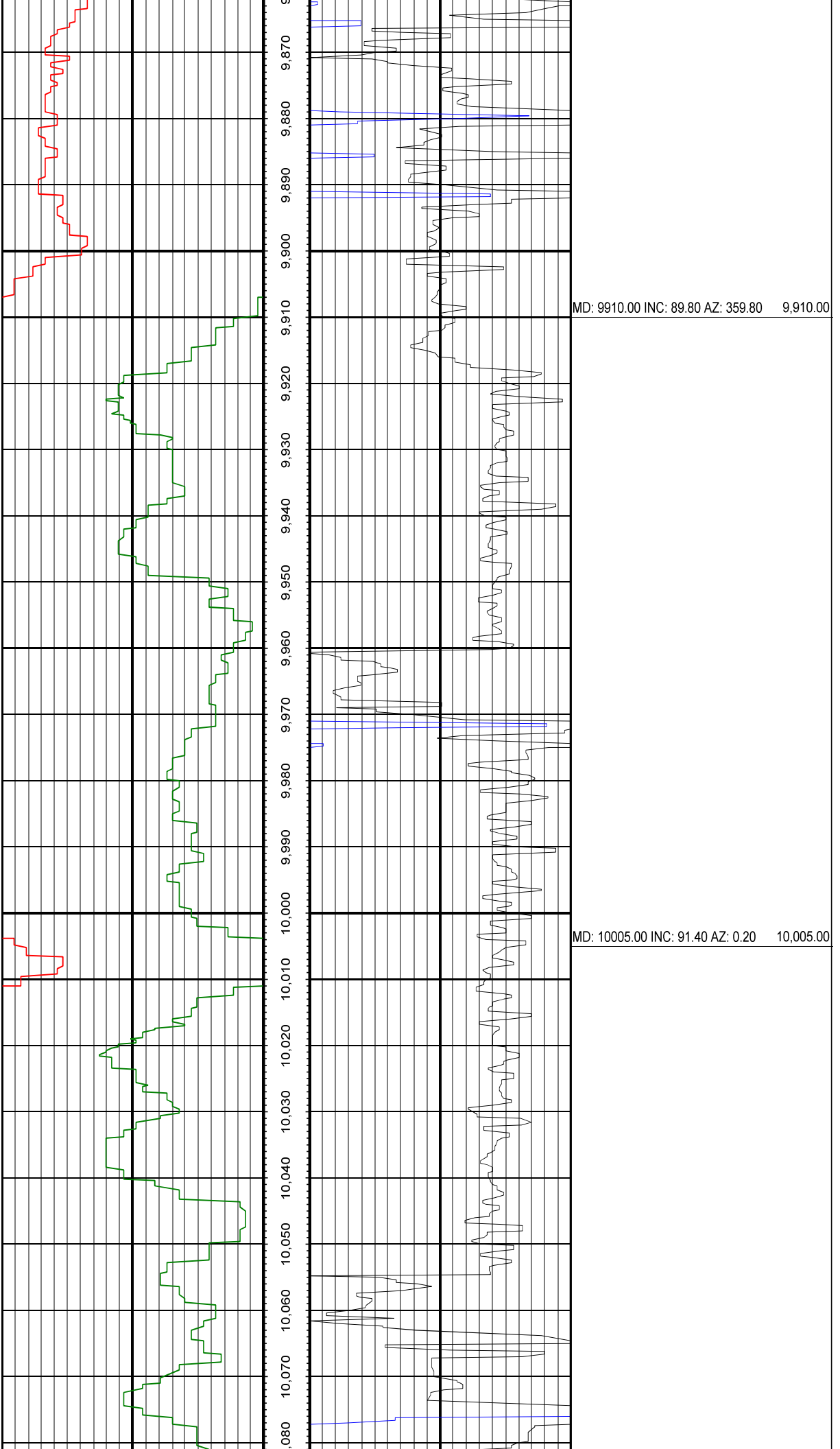


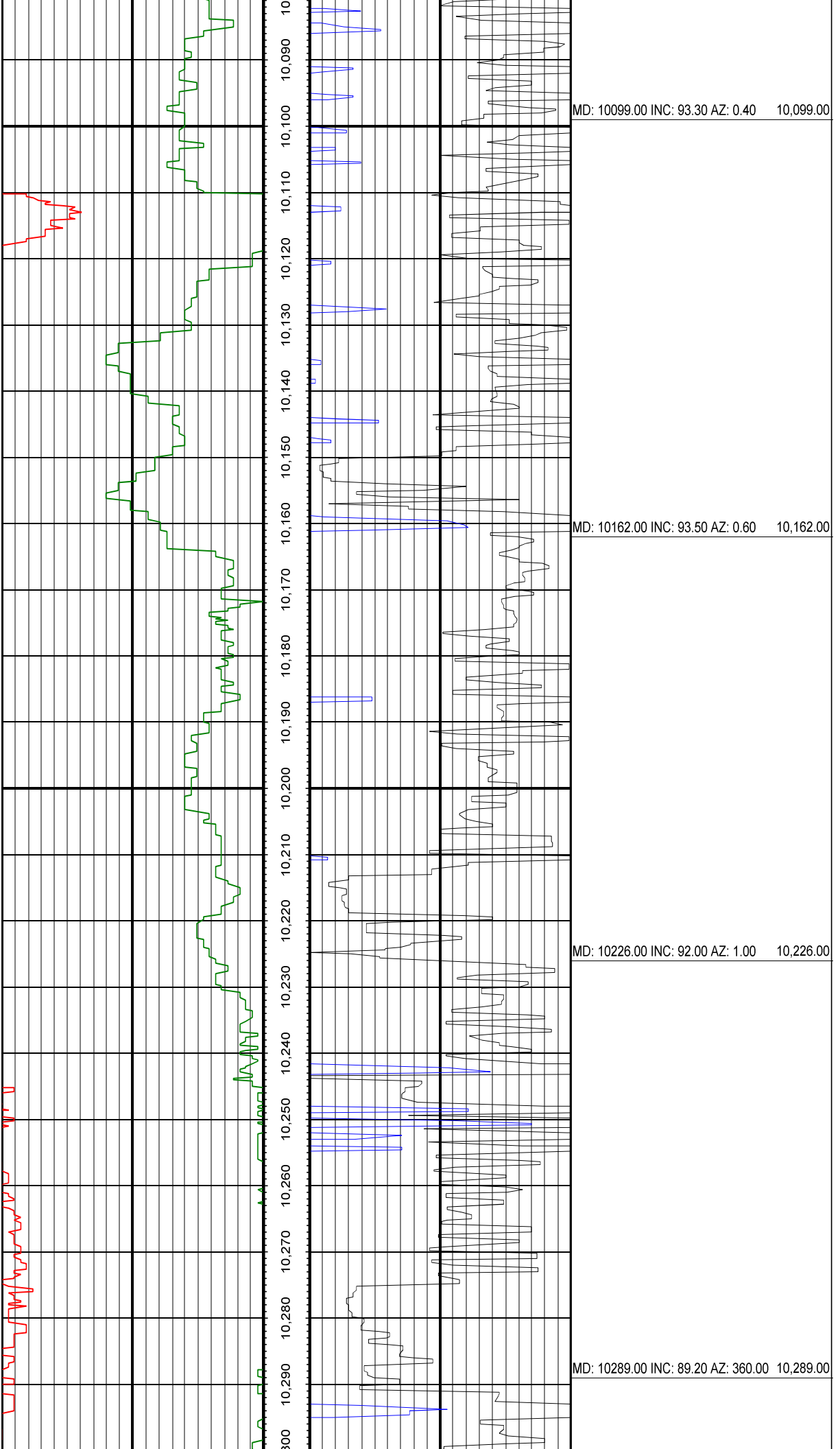
MD: 9436.00 INC: 88.60 AZ: 359.60 9,436.00

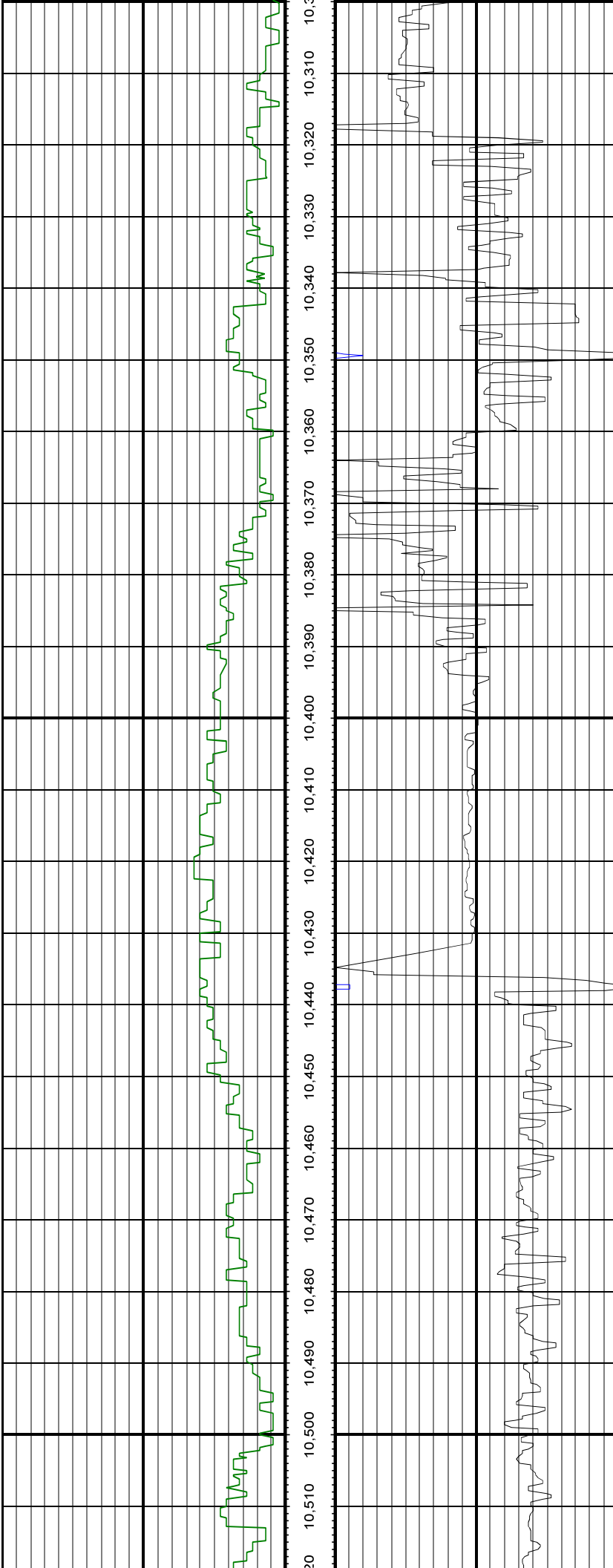
MD: 9531.00 INC: 88.50 AZ: 357.80 9,531.00

MD: 9625.00 INC: 91.70 AZ: 359.50 9,625.00



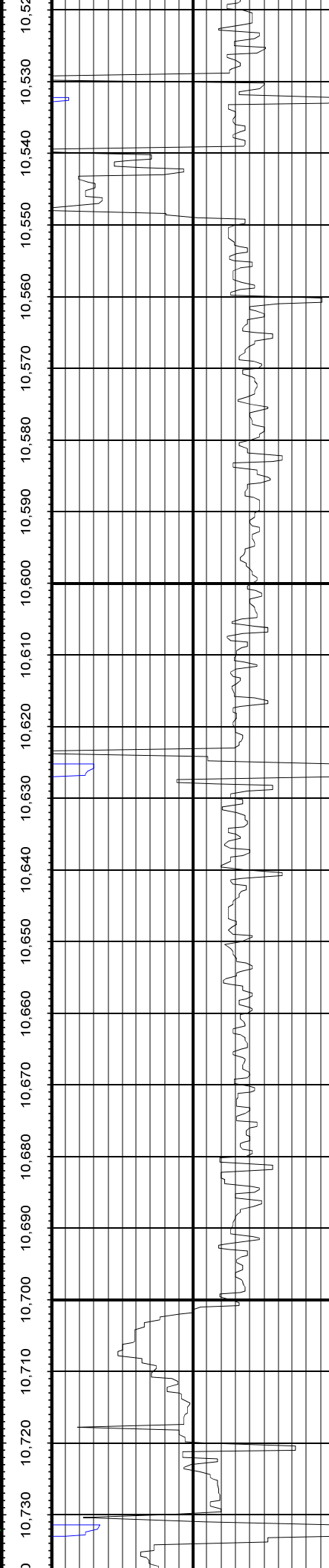
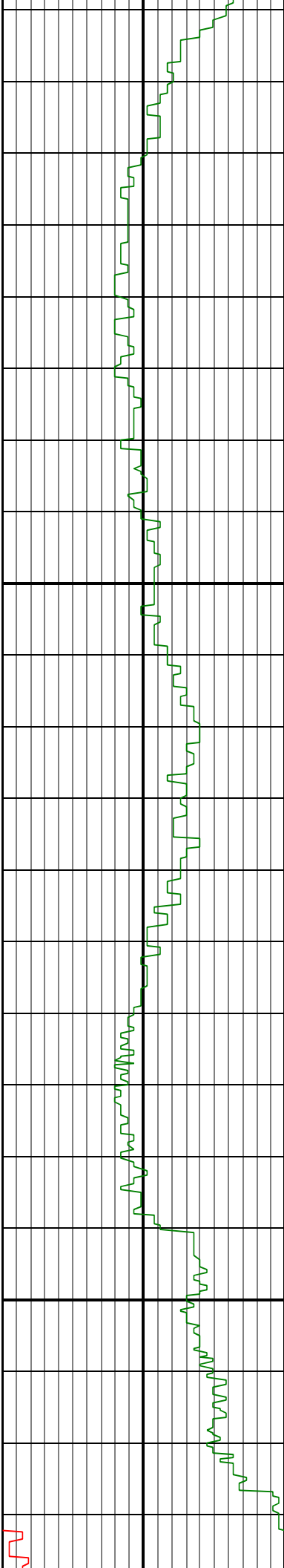






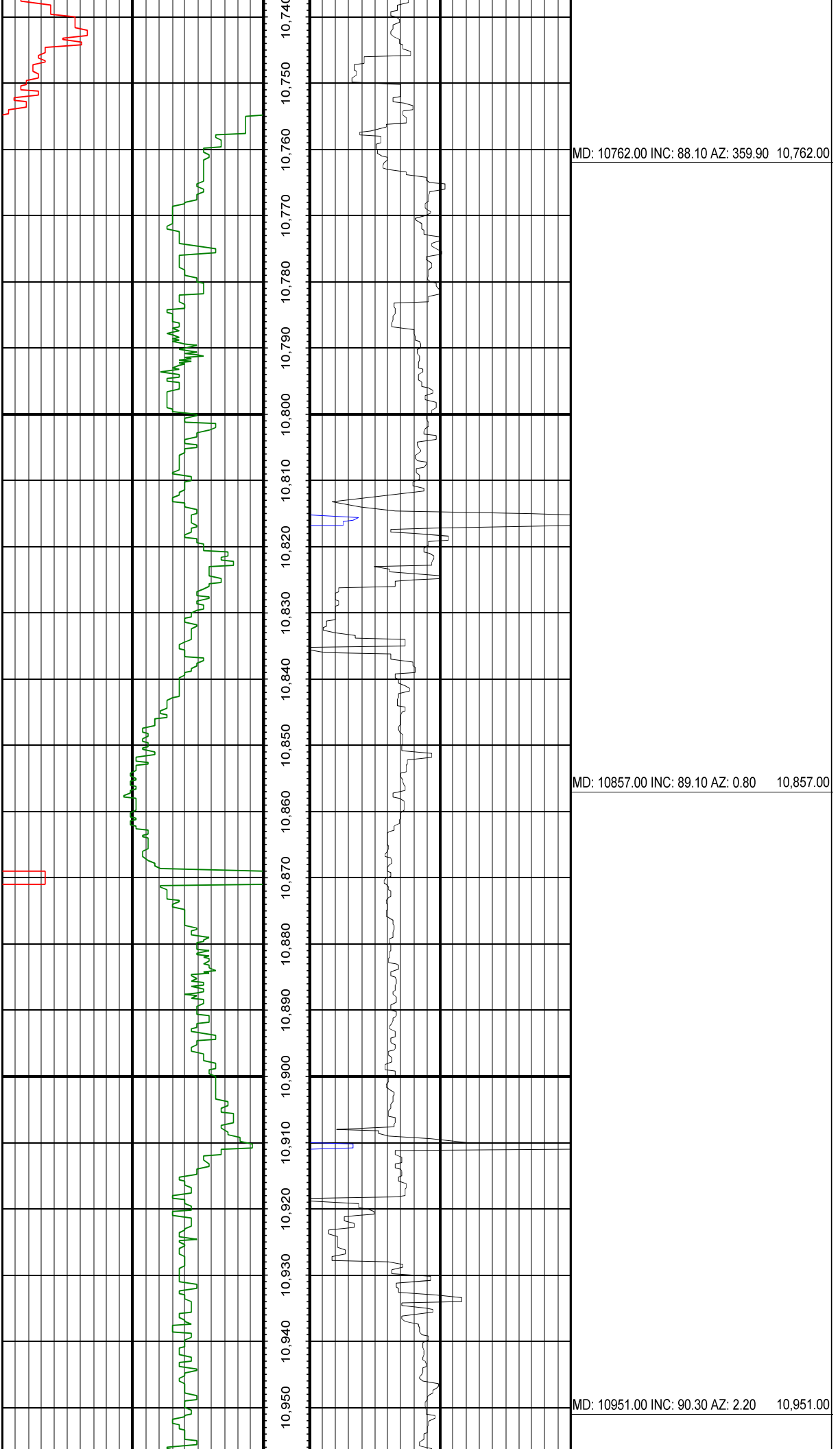
MD: 10383.00 INC: 89.20 AZ: 1.00 10,383.00

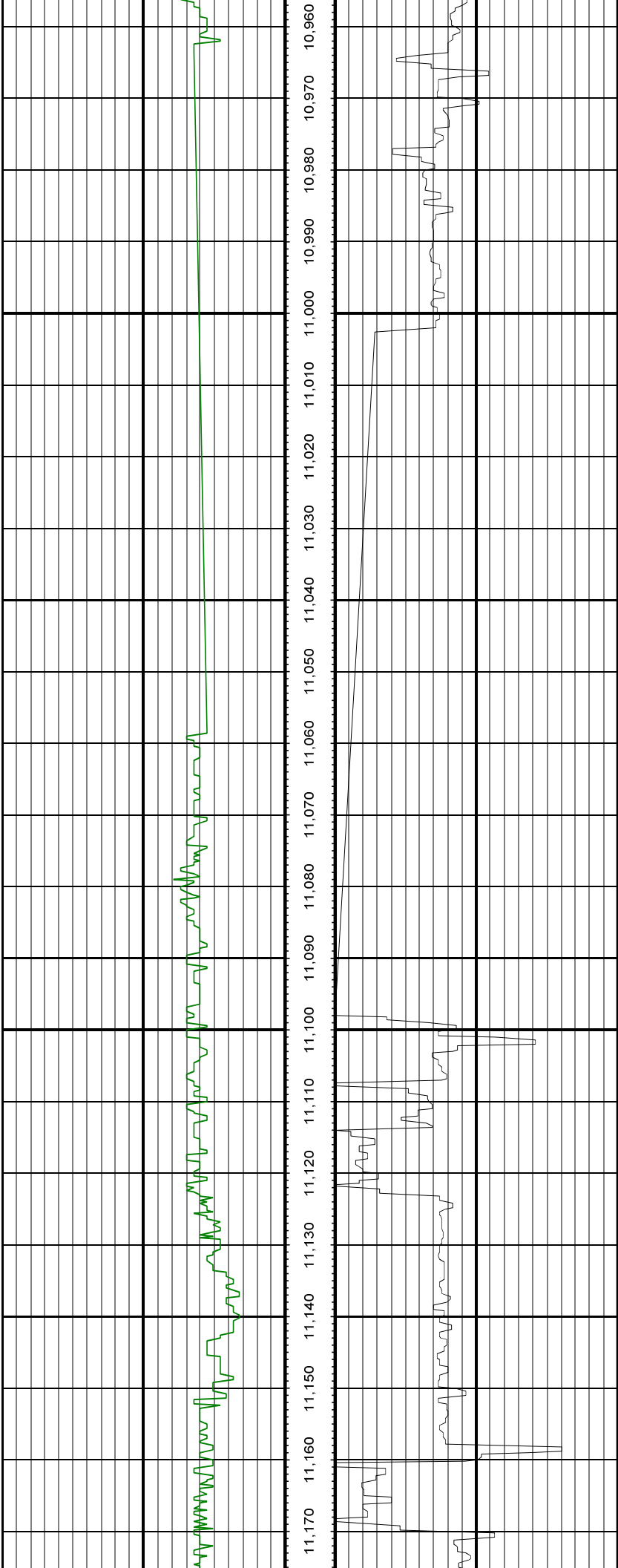
MD: 10478.00 INC: 88.50 AZ: 0.60 10,478.00



MD: 10573.00 INC: 89.70 AZ: 0.30 10,573.00

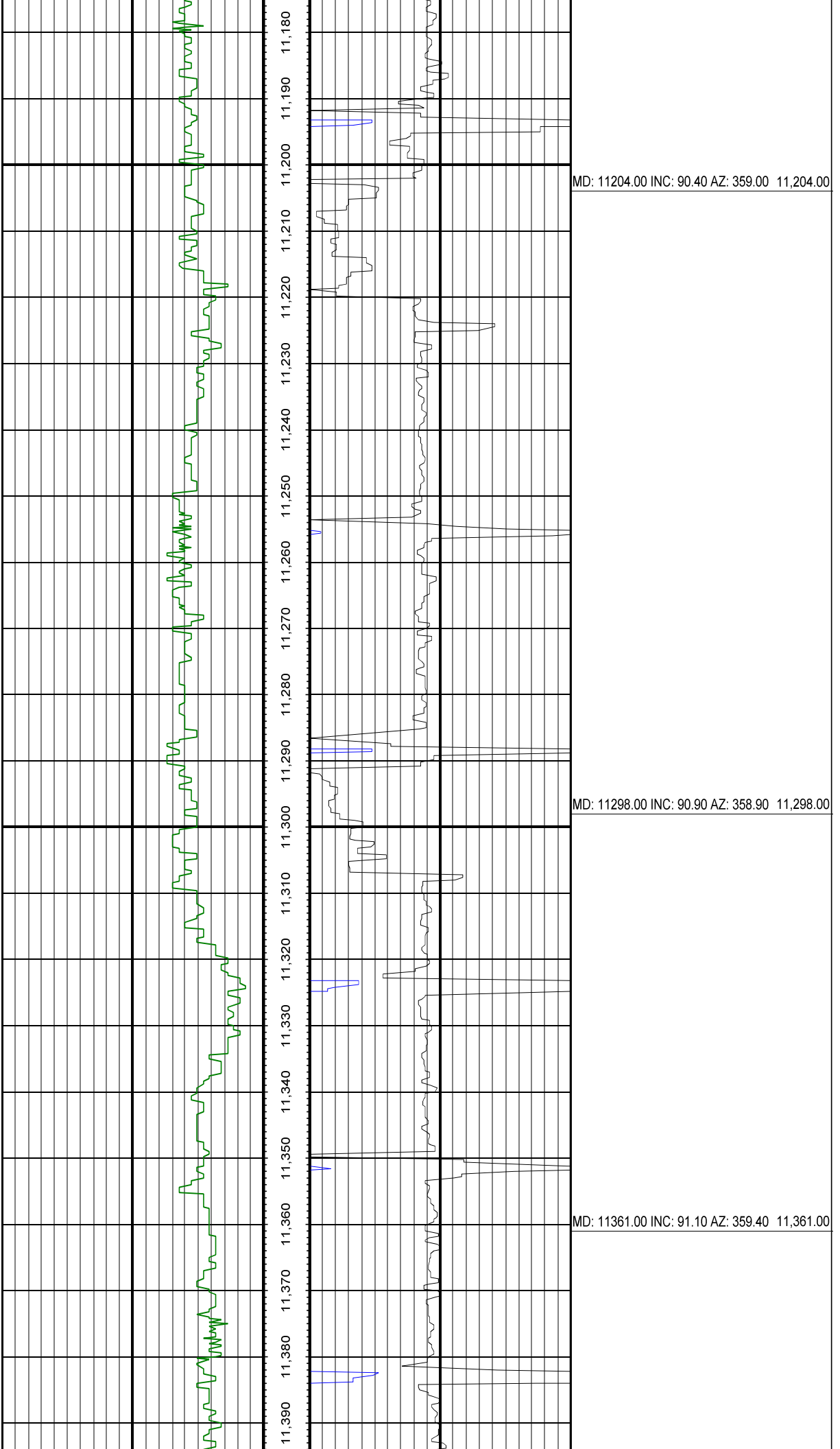
MD: 10667.00 INC: 88.90 AZ: 0.30 10,667.00

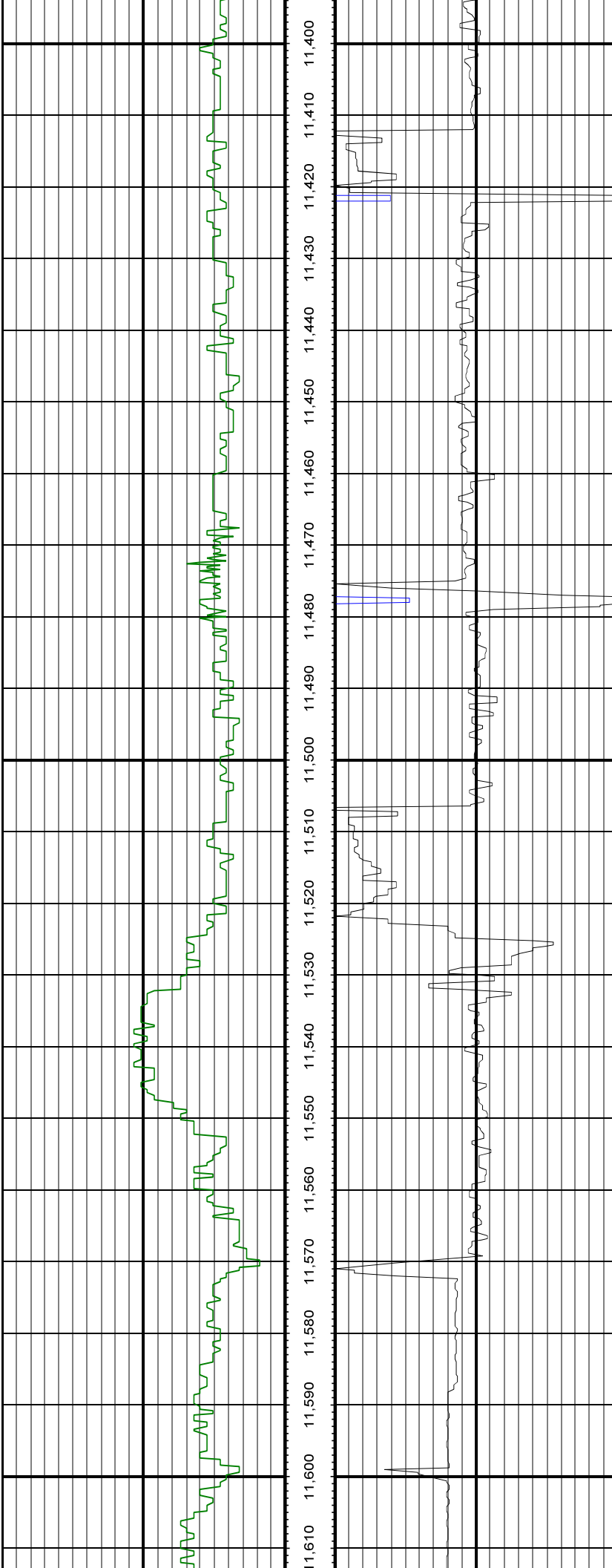




MD: 11046.00 INC: 90.30 AZ: 3.80 11,046.00

MD: 11141.00 INC: 89.90 AZ: 3.20 11,141.00

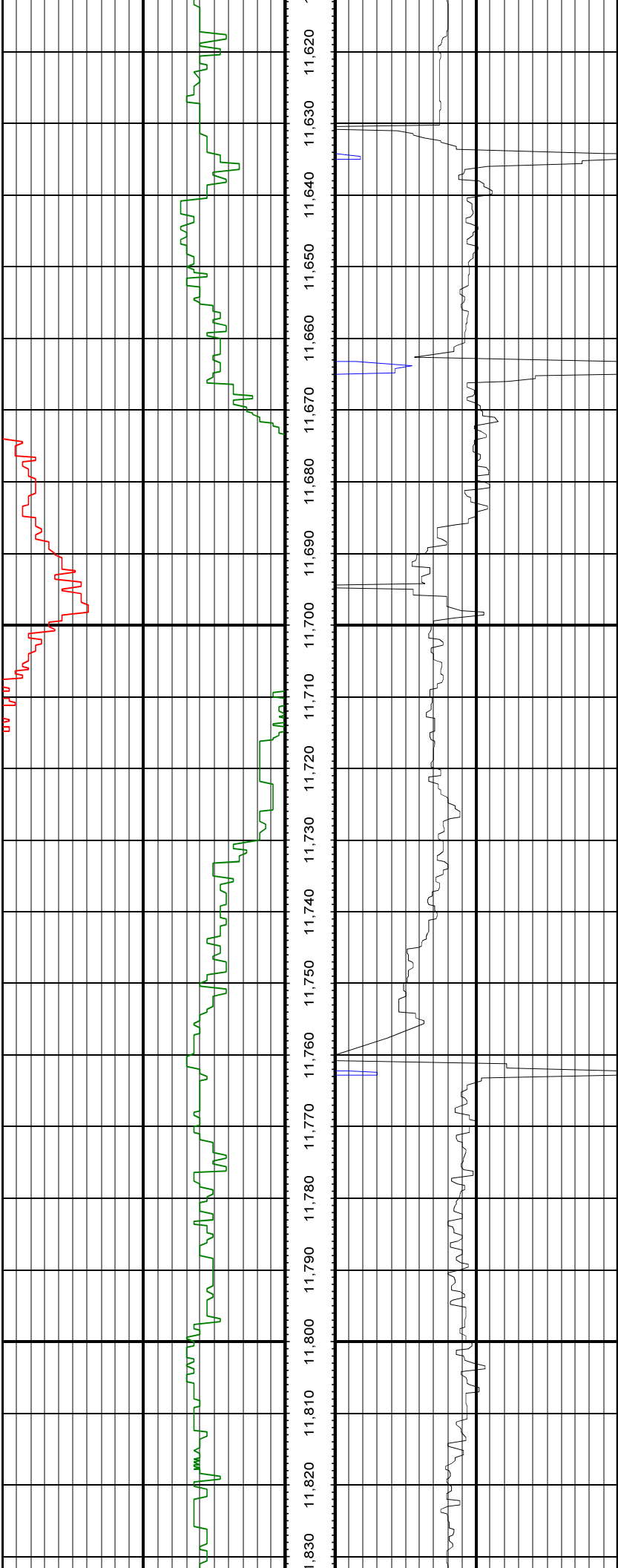




MD: 11425.00 INC: 90.90 AZ: 358.70 11,425.00

MD: 11519.00 INC: 91.80 AZ: 358.70 11,519.00

MD: 11614.00 INC: 92.00 AZ: 358.90 11,614.00



MD: 11614.00 INC: 92.00 AZ: 358.50 11,614.00	
MD: 11709.00 INC: 91.50 AZ: 358.50 11,709.00	
MD: 11803.00 INC: 89.40 AZ: 356.70 11,803.00	

