

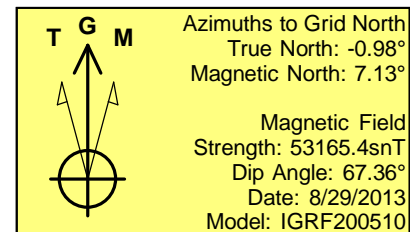
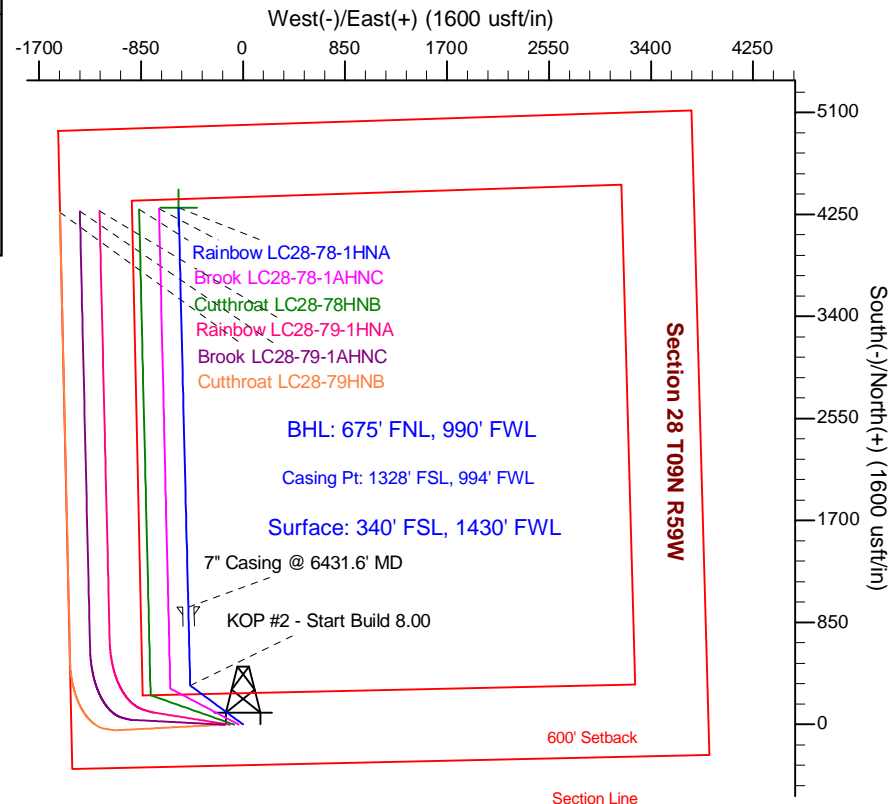
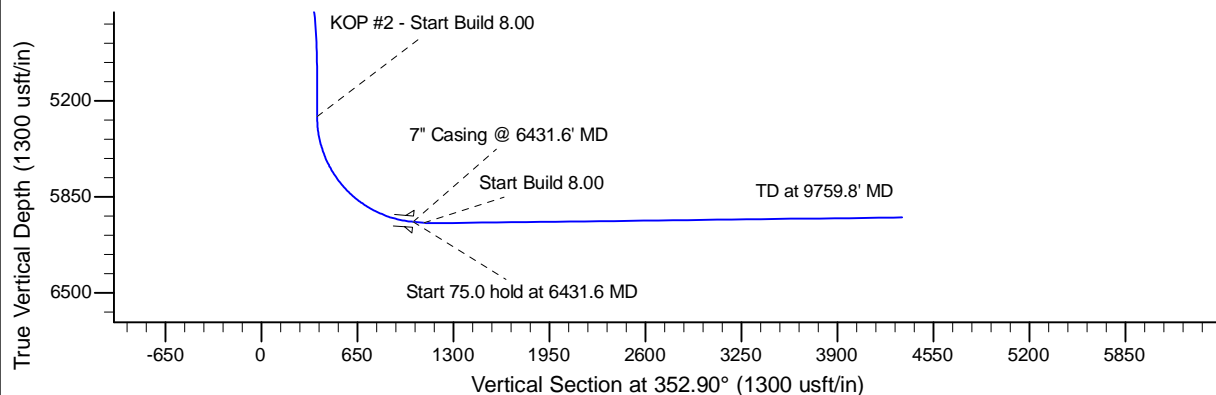
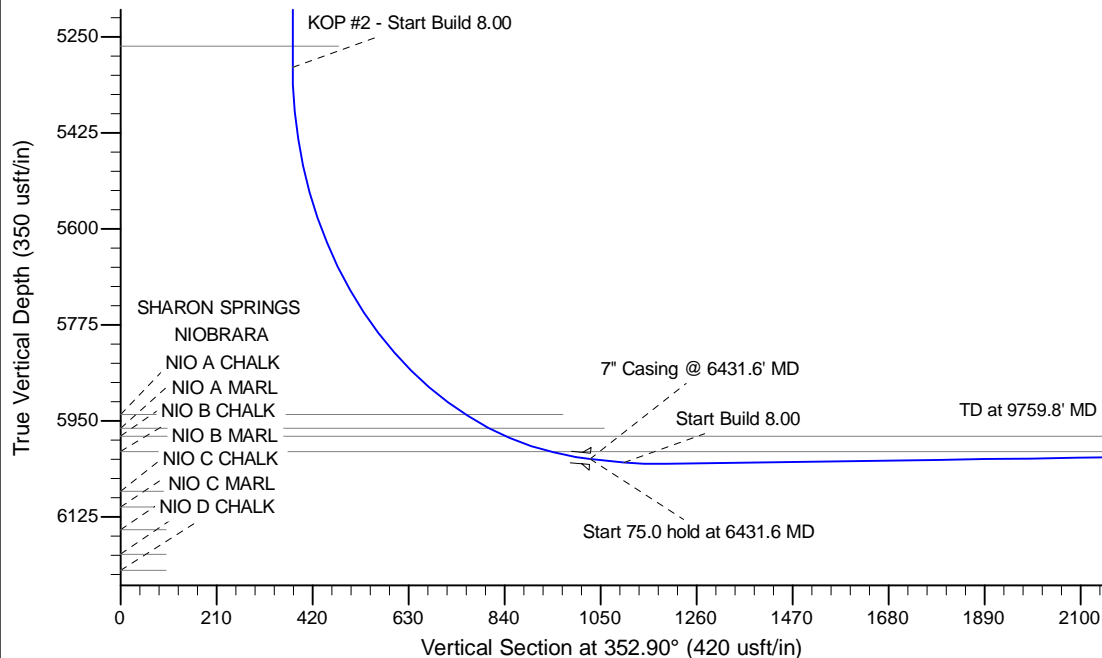
Project: Wattenberg Field  
 Site: LC (Sec.28-T09N-R59W) Weld County, CO  
 Well: Rainbow LC28-78-1HNA  
 Wellbore: Original Drilling  
 Design: APD - Rev 1

# Northern Region Drilling - Working

Geodetic System: US State Plane 1983  
 Datum: North American Datum 1983  
 Ellipsoid: GRS 1980  
 Zone: Colorado Northern Zone  
 System Datum: Mean Sea Level

## SECTION DETAILS

Sec	MD	Inc	Azi	TVD	+N/-S	+E/-W	Dleg	TFace	VFace	Target
1	0.0	0.00	0.00	0.0	0.0	0.0	0.00	0.00	0.0	
2	2200.0	0.00	0.00	2200.0	0.0	0.0	0.00	0.00	0.0	
3	2950.4	15.01	306.45	2941.9	58.1	-78.6	2.00	306.45	67.3	
4	4308.0	15.01	306.45	4253.1	266.9	-361.4	0.00	0.00	309.6	
5	5058.4	0.00	0.00	4995.0	325.0	-440.0	2.00	180.00	376.9	
6	5369.1	0.00	0.00	5305.7	325.0	-440.0	0.00	0.00	376.9	
7	6431.6	85.00	358.61	6019.2	978.6	-455.8	8.00	358.61	1027.4	
8	6506.6	85.00	358.61	6025.7	1053.3	-457.6	0.00	0.00	1101.8	
9	6577.9	90.70	358.61	6028.4	1124.4	-459.4	8.00	0.00	1172.6	
10	9759.8	90.70	358.61	5989.5	4305.2	-536.4	0.00	0.00	4338.5	Rainbow LC28-78-1HNA BHL 675'FNL, 990'FWL



## WELL DETAILS: Rainbow LC28-78-1HNA

Ground Level: 4853.0			
0.0	0.0	1506891.78	3419341.32
Northing	Easting	Latitude	Longitude
0.0	0.0	40.714990	-103.987240

## Plan: APD - Rev 1 (Rainbow LC28-78-1HNA/Original Drilling)

Created By: Shailey Jewell	Date: 11:54, January 14 2014
Checked: _____	Date: _____
Reviewed: _____	Date: _____
Approved: _____	Date: _____