

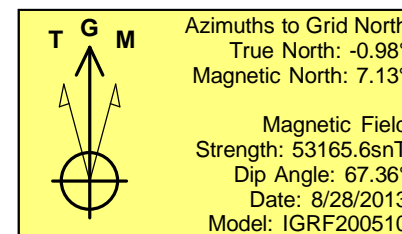
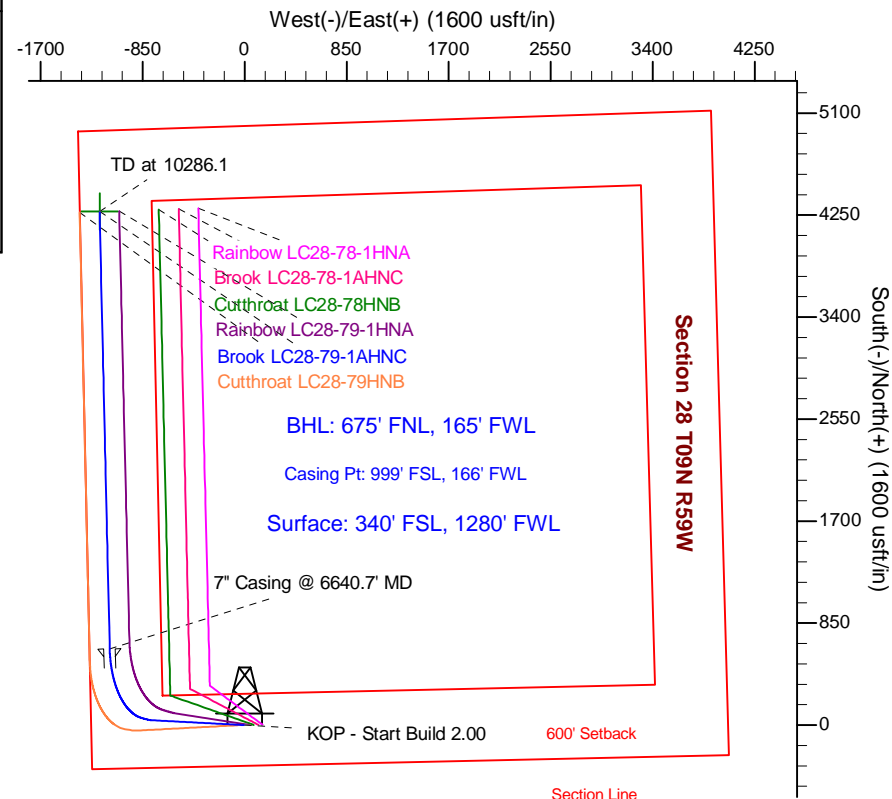
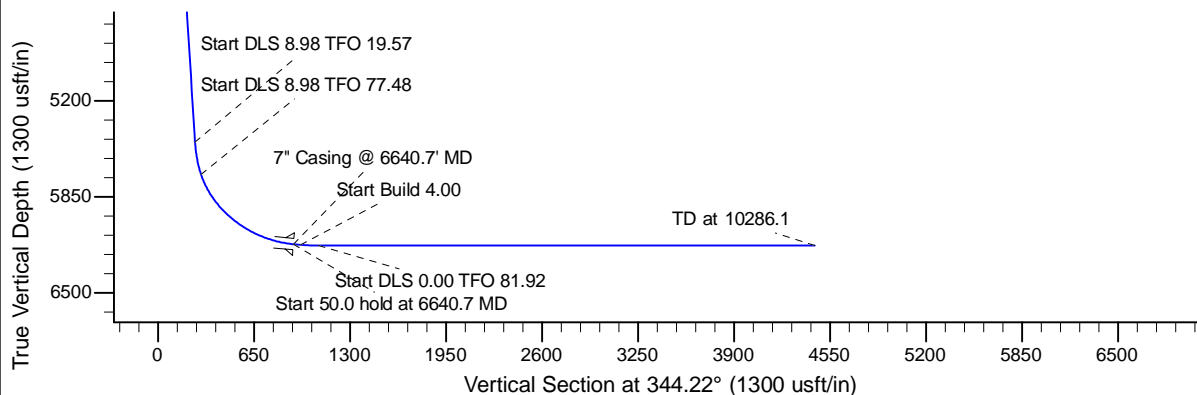
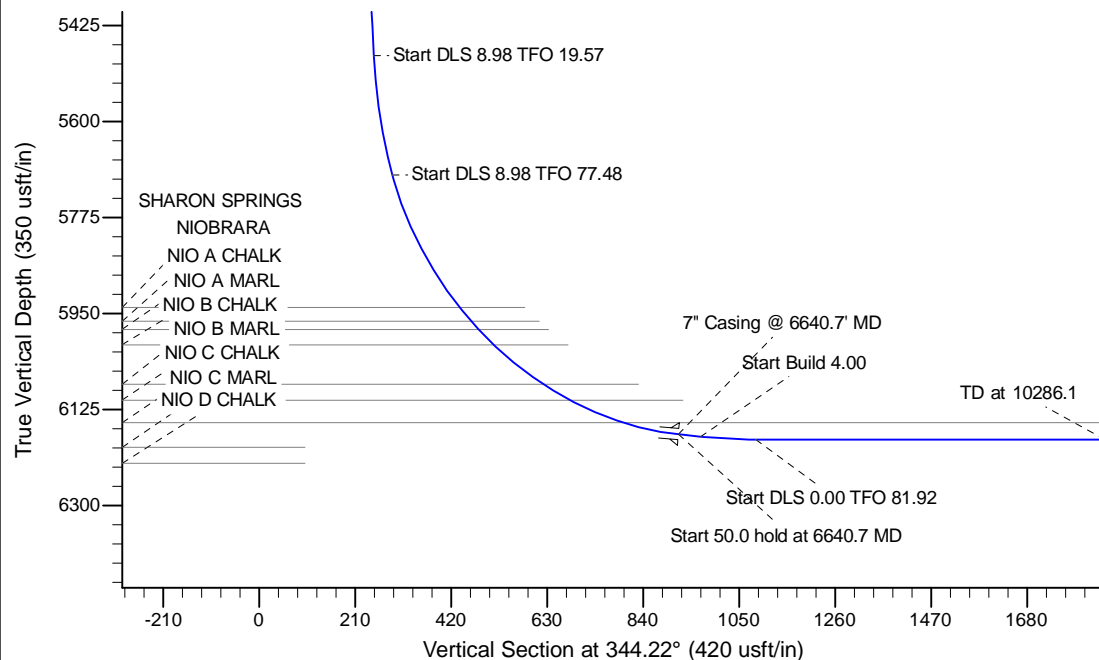
Project: Wattenberg Field
 Site: LC (Sec.28-T09N-R59W) Weld County, CO
 Well: Brook LC28-79-1AHNC
 Wellbore: Original Drilling
 Design: APD - Rev 1

Northern Region Drilling - Working

Geodetic System: US State Plane 1983
 Datum: North American Datum 1983
 Ellipsoid: GRS 1980
 Zone: Colorado Northern Zone
 System Datum: Mean Sea Level

SECTION DETAILS

Sec	MD	Inc	Azi	TVD	+N/-S	+E/-W	Dleg	TFace	VSec	Target
1	0.0	0.00	0.00	0.0	0.0	0.0	0.00	0.00	0.0	
2	1200.0	0.00	0.00	1200.0	0.0	0.0	0.00	0.00	0.0	
3	1750.0	11.00	273.00	1746.6	2.8	-52.6	2.00	273.00	16.9	
4	5553.2	11.00	273.00	5480.0	40.7	-777.3	0.00	0.00	250.6	
5	5788.0	31.65	286.28	5697.6	59.4	-859.7	8.98	19.57	291.0	
6	6640.7	85.00	358.67	6170.2	635.0	-1125.0	8.98	77.48	917.0	
7	6690.7	85.00	358.67	6174.6	684.8	-1126.2	0.00	0.00	965.3	
8	6815.7	90.00	358.67	6180.0	809.6	-1129.1	4.00	0.00	1086.2	
9	10286.1	90.00	358.67	6180.0	4279.1	-1209.5	0.00	81.92	4446.8	Brook LC28-79-1AHNC BHL 675'FNL, 165'FWL



WELL DETAILS: Brook LC28-79-1AHNC

Ground Level: 4854.0			
0.0	0.0	1506889.23	3419191.64
Northing	Easting	Latitude	Longitude
0.0	0.0	40.714990	-103.987780

Plan: APD - Rev 1 (Brook LC28-79-1AHNC/Original Drilling)

Created By: Shailey Jewell	Date: 11:27, January 14 2014
Checked: _____	Date: _____
Reviewed: _____	Date: _____
Approved: _____	Date: _____