

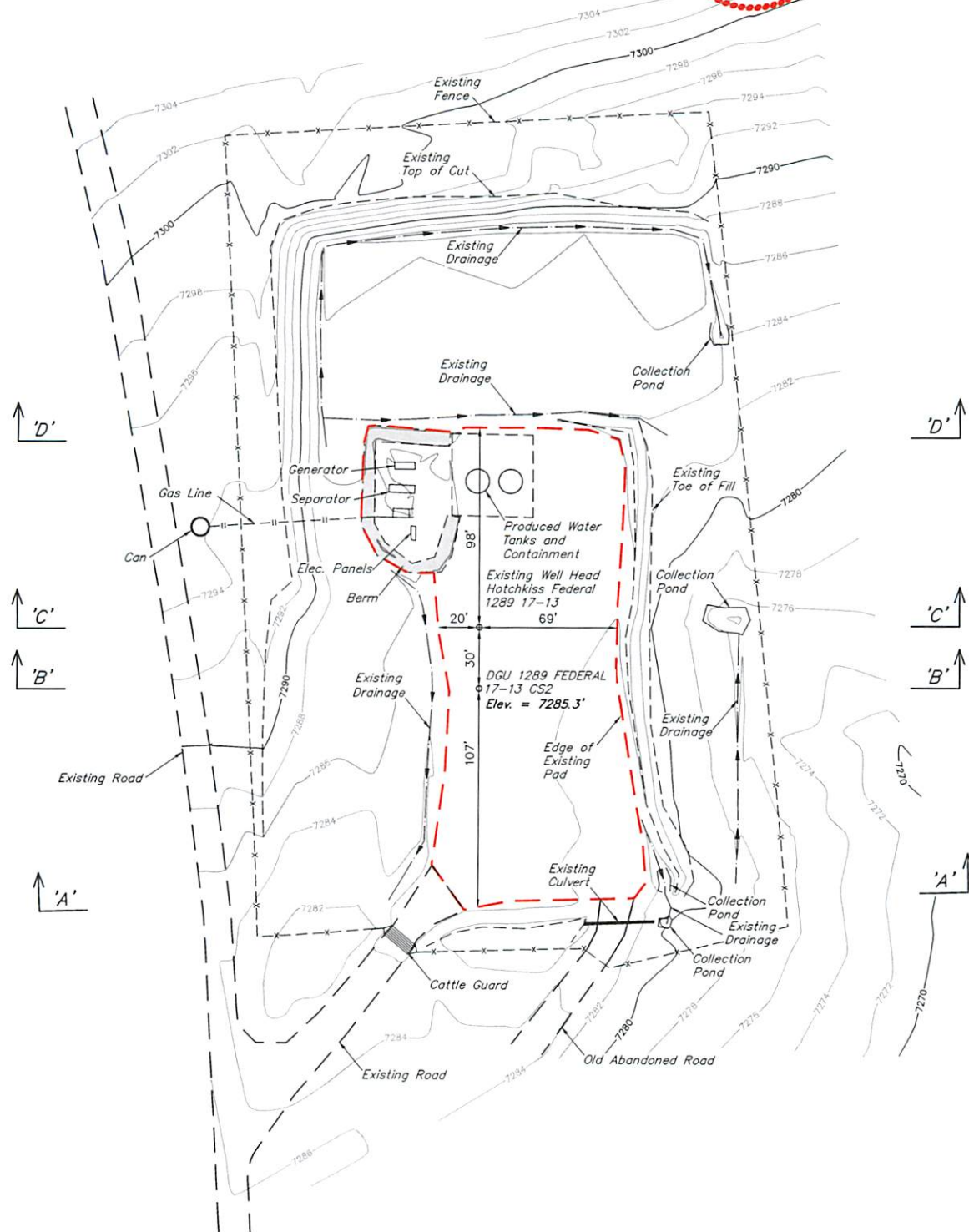
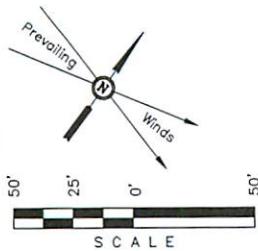
GUNNISON ENERGY CORPORATION

AS-BUILT SITE PLAN FOR

DGU 1289 FEDERAL 17-13 CS2
ON EXISTING HOTCHKISS FEDERAL 1289 17-13 PAD
SECTION 17, T12S, R89W, 6th P.M.
NW 1/4 SW 1/4

FIGURE #1

SCALE: 1" = 50'
DATE: 10-01-13
DRAWN BY: M.D.
REVISED: 11-11-13
REVISED: 12-12-13



APPROXIMATE ACREAGE

WELL SITE DISTURBANCE
WITHIN FENCE AREA = ± 2.337

FINISHED GRADE ELEV. AT 17-13 CS2 LOC. STAKE = 7285.3'

UINTAH ENGINEERING & LAND SURVEYING
85 So. 200 East • Vernal, Utah 84078 • (435) 789-1017