

GUNNISON ENERGY CORPORATION
DGU 1289 FEDERAL 17-13 CS2 ON
EXISTING HOTCHKISS FEDERAL 1289 17-13 PAD
LOCATED IN GUNNISON COUNTY, COLORADO
SECTION 17, T12S, R89W, 6th P.M.



PHOTO: VIEW OF REFERENCE AREA

CAMERA ANGLE: NORTHERLY



PHOTO: VIEW OF REFERENCE AREA

CAMERA ANGLE: EASTERLY



- Since 1964 -

UELS Uintah Engineering & Land Surveying
85 South 200 East Vernal, Utah 84078
(435) 789-1017 * FAX (435) 789-1813

**REFERENCE AREA
PHOTOS**

11 06 13
MONTH DAY YEAR

**PHOTO
REF 1**

TAKEN BY: B.B. DRAWN BY: J.M.F. REVISED: 12-14-13

GUNNISON ENERGY CORPORATION
DGU 1289 FEDERAL 17-13 CS2 ON
EXISTING HOTCHKISS FEDERAL 1289 17-13 PAD
LOCATED IN GUNNISON COUNTY, COLORADO
SECTION 17, T12S, R89W, 6th P.M.

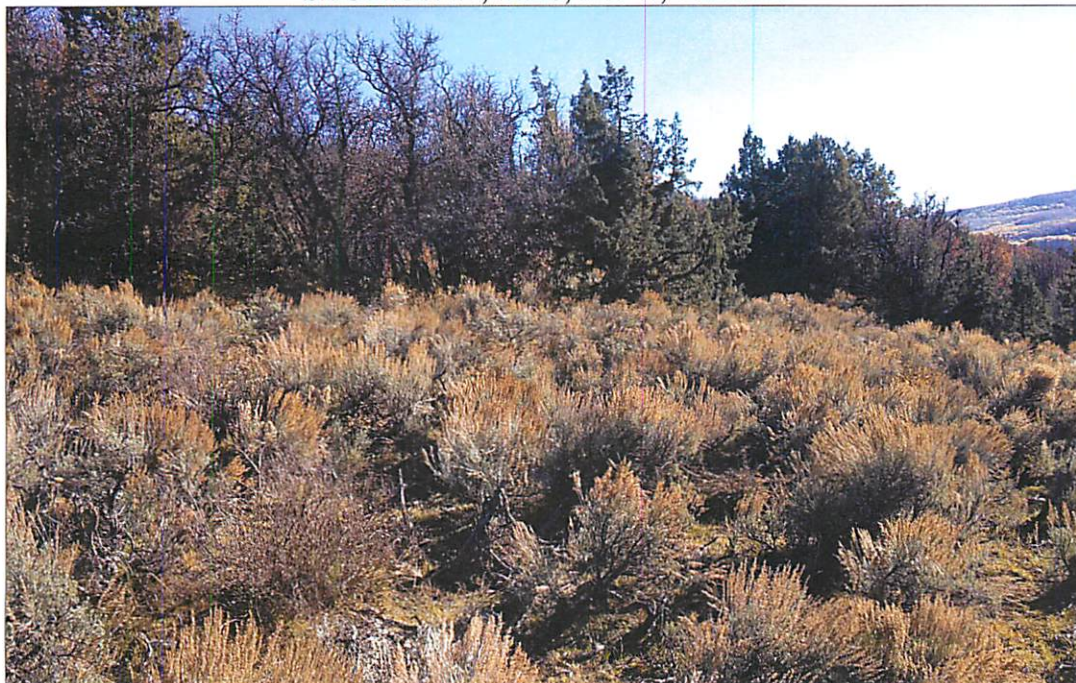


PHOTO: VIEW OF REFERENCE AREA

CAMERA ANGLE: SOUTHERLY

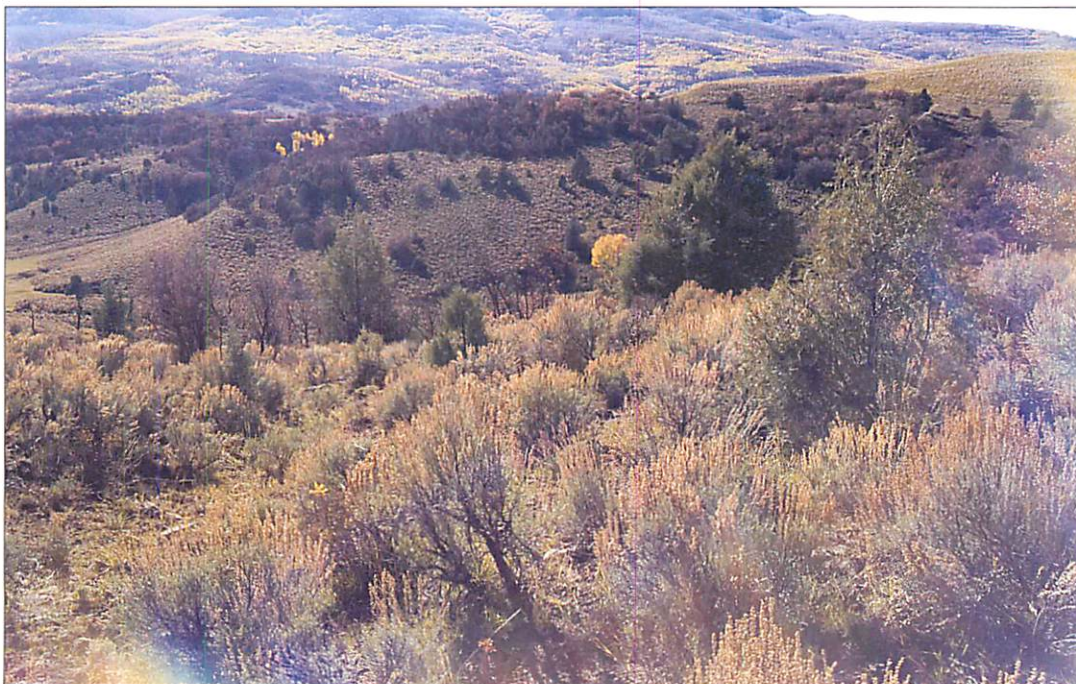


PHOTO: VIEW OF REFERENCE AREA

CAMERA ANGLE: WESTERLY



- Since 1964 -

U
ELS Uintah Engineering & Land Surveying
85 South 200 East Vernal, Utah 84078
(435) 789-1017 * FAX (435) 789-1813

REFERENCE AREA
PHOTOS

11 **06** **13**
MONTH DAY YEAR

TAKEN BY: B.B. DRAWN BY: J.M.F. REVISED: 12-14-13

PHOTO
REF2