

GUNNISON ENERGY CORPORATION

LOCATION DRAWING FOR

DGU 1289 FEDERAL 17-13 CS2
ON EXISTING HOTCHKISS FEDERAL 1289 17-13 PAD
SECTION 17, T12S, R89W, 6th P.M.
NW 1/4 SW 1/4

FIGURE #5

SCALE: 1" = 200'
DATE SURVEYED: 09-24-13
SURVEYED BY: JARED CHRISTOPHER
DATE DRAWN: 11-11-13
DRAWN BY: M.D.
REVISED: 12-12-13



NW Cor. Sec. 17
1921 Brass Cap
0.9' High

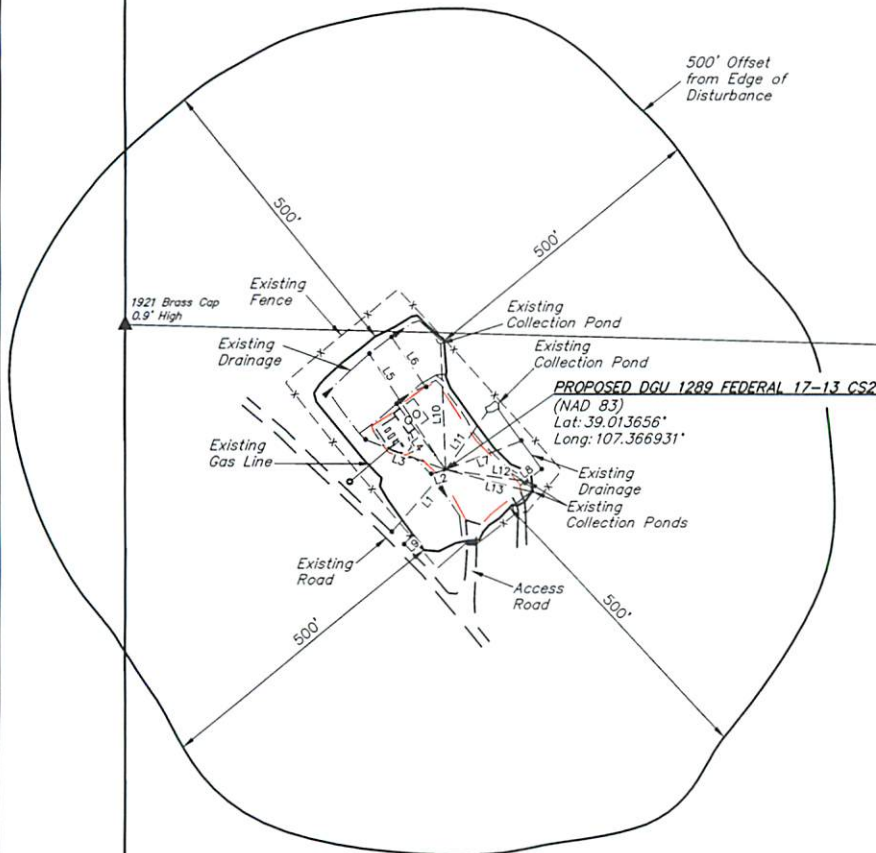


N00°10'13"W - 2638.44' (Meas.)
Section Line

1/16 Section Line

HOTCHKISS
RANCHES INC.

VOLK
RANCH LLLP



1/4 Section Line Sec. 17

VOLK
RANCH LLLP

HOTCHKISS
RANCHES INC.

LINE TABLE		
LINE	DIRECTION	LENGTH
L1	S40°47'32"W	136.33'
L2	S73°31'02"W	25.20'
L3	N69°38'30"W	140.86'
L4	N37°03'22"W	134.21'
L5	N33°52'17"W	226.27'
L6	N34°49'01"W	99.50'
L7	N69°18'31"E	133.65'
L8	N52°49'34"E	44.19'
L9	S45°31'12"W	22.42'
L10	N02°22'04"W	204.44'
L11	N36°14'56"E	115.83'
L12	S81°56'32"E	125.74'
L13	S75°40'10"E	143.96'

1/16 Section Line

HOTCHKISS
RANCHES INC.

HOTCHKISS
RANCHES INC.

N00°05'16"W - 2640.14' (Meas.)

SW Cor. Sec. 17
1921 Brass Cap
0.7' High



GUNNISON ENERGY CORPORATION

LOCATION DRAWING FOR

DGU 1289 FEDERAL 17-13 CS2
ON EXISTING HOTCHKISS FEDERAL 1289 17-13 PAD
SECTION 17, T12S, R89W, 6th P.M.
NW 1/4 SW 1/4

FIGURE #6

SCALE: 1" = 600'
DATE: 12-15-13
DRAWN BY: M.D.

