



DDC

RM-13748

1":100' - TVD

9/29/2013 5:05:42 PM

Oper. Company: Noble Energy

Country: USA

State / Province: Colorado

County / Parish: Weld

Started: 09/25/2013 07:00 PM

API/UWI: 05-123-37547-00

Field: Wattenburg

Well: Rohn State LD09-68-1HN

Rig: H&P 326

Ended: 09/29/2013 05:00 PM

FINAL

Personnel

Day Hand: Chris Abbott

Night Hand: Josh Jann

Comp. Emp:

Location

Latitude: 40° 46' 14.124 N

Longitude: 103° 51' 42.120 W

Elev. GL: 4739

Elev. DF: 30

Elev. KB: 4769

Hole Data

Size	From	To
13 1/2	0	1258
8 3/4	1258	6118
6 1/8	6118	9435

Casing Data

Size	From	To
9 5/8	0	1258
7	1258	6118
4	6118	0

Bit Sizes

Size	From	To
13 1/2	0	1258
8 3/4	1258	6118
6 1/8	6118	9435

Mud Data

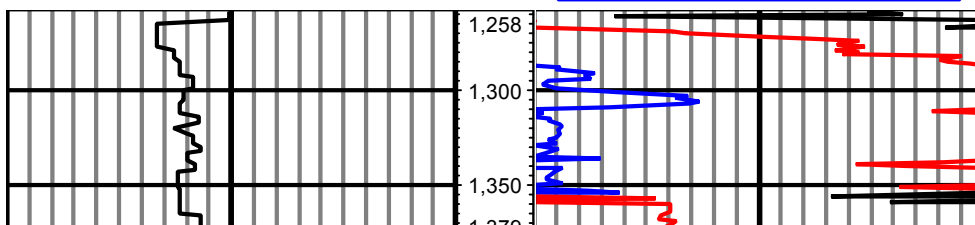
Type	Weight	Density	Viscosity	Rm	Rmf	Rmc	From	To
LSND	10		38				0	9435

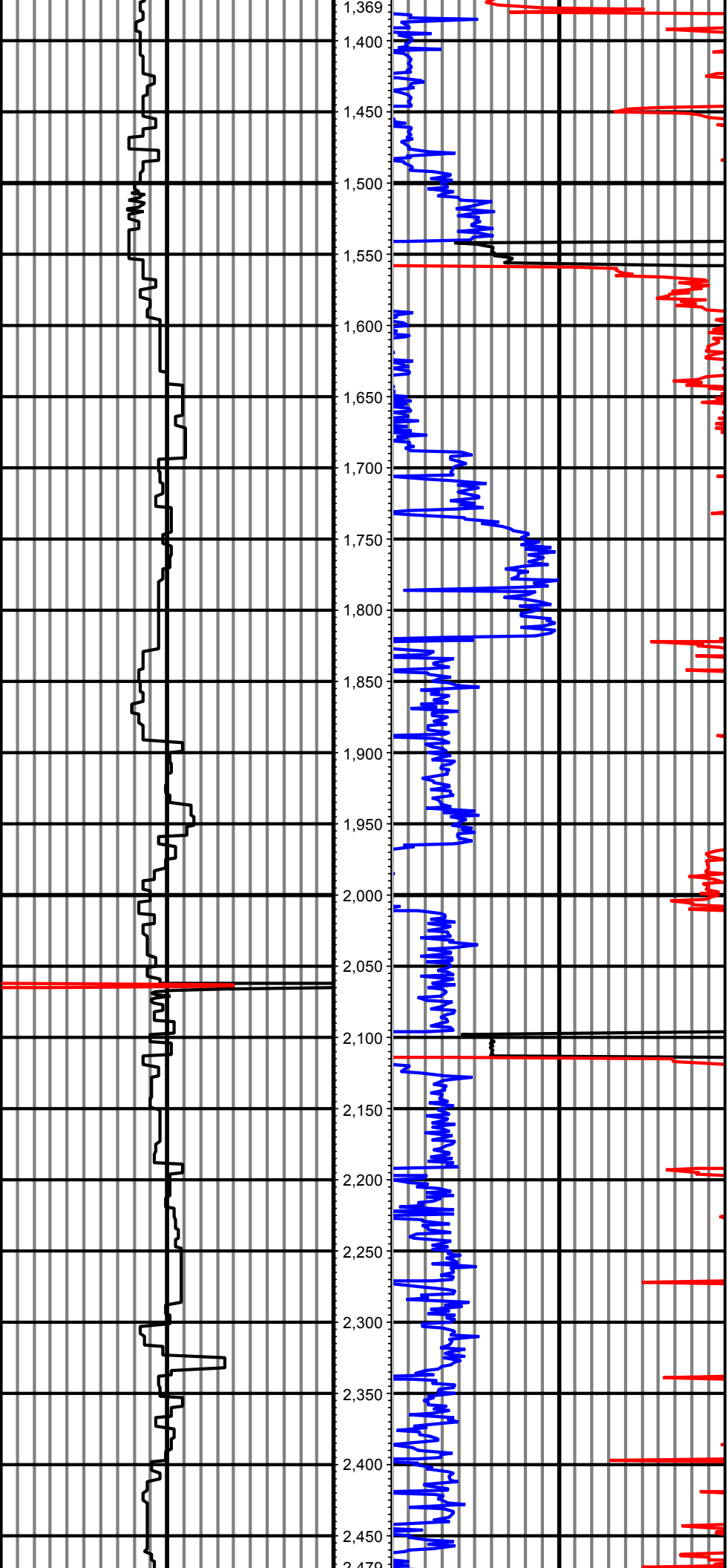
Tool Run Data

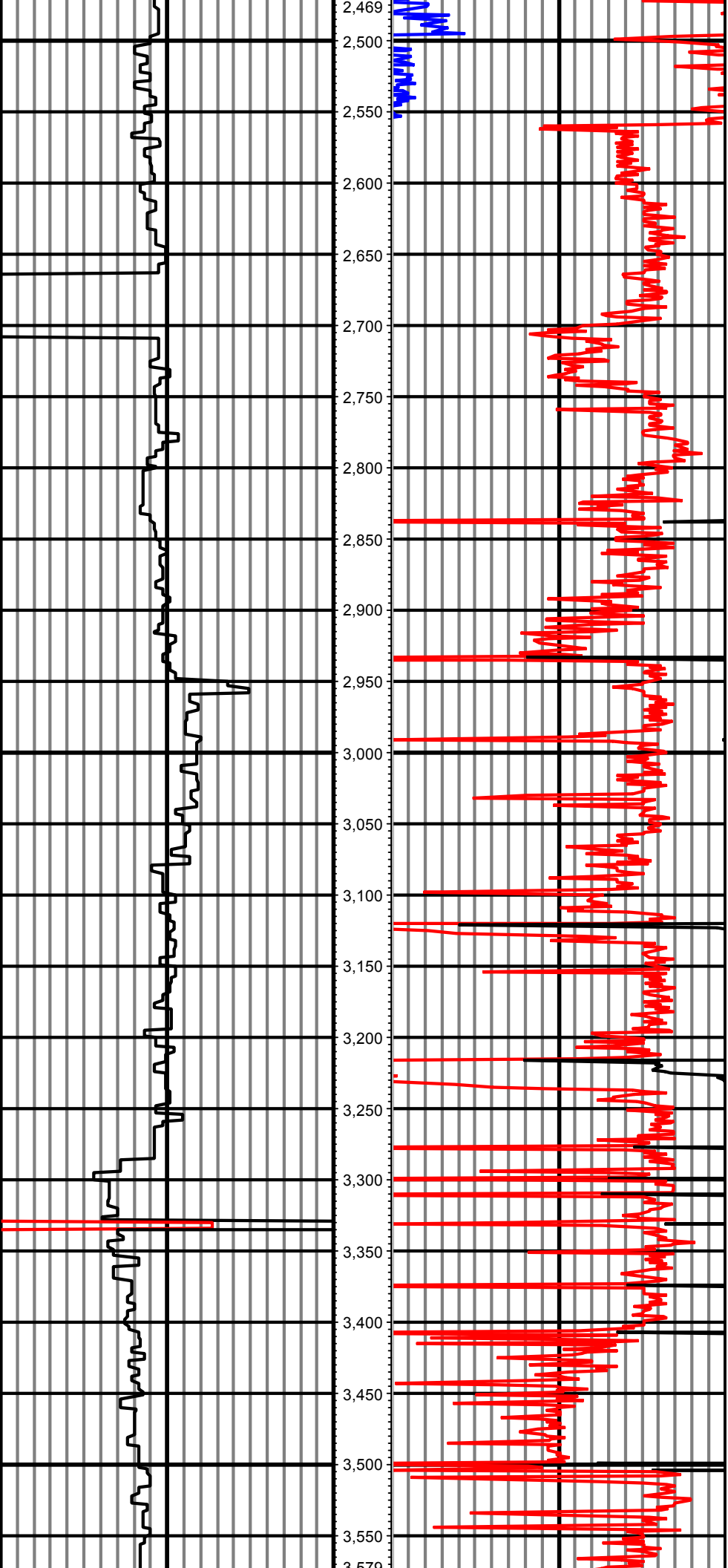
Serial Number	Gamma Offset	Resist. Offset	Start Time	Start Depth	End Time	End Depth
1120	36	0	9/25/2013 7:00:21 PM	1258	9/26/2013 9:00:21 AM	4889
1120	44	0	9/26/2013 11:00:48 AM	4889	9/27/2013 8:00:48 AM	6118
1120	52	0	9/28/2013 10:00:06 AM	6118	9/29/2013 5:00:06 PM	9435

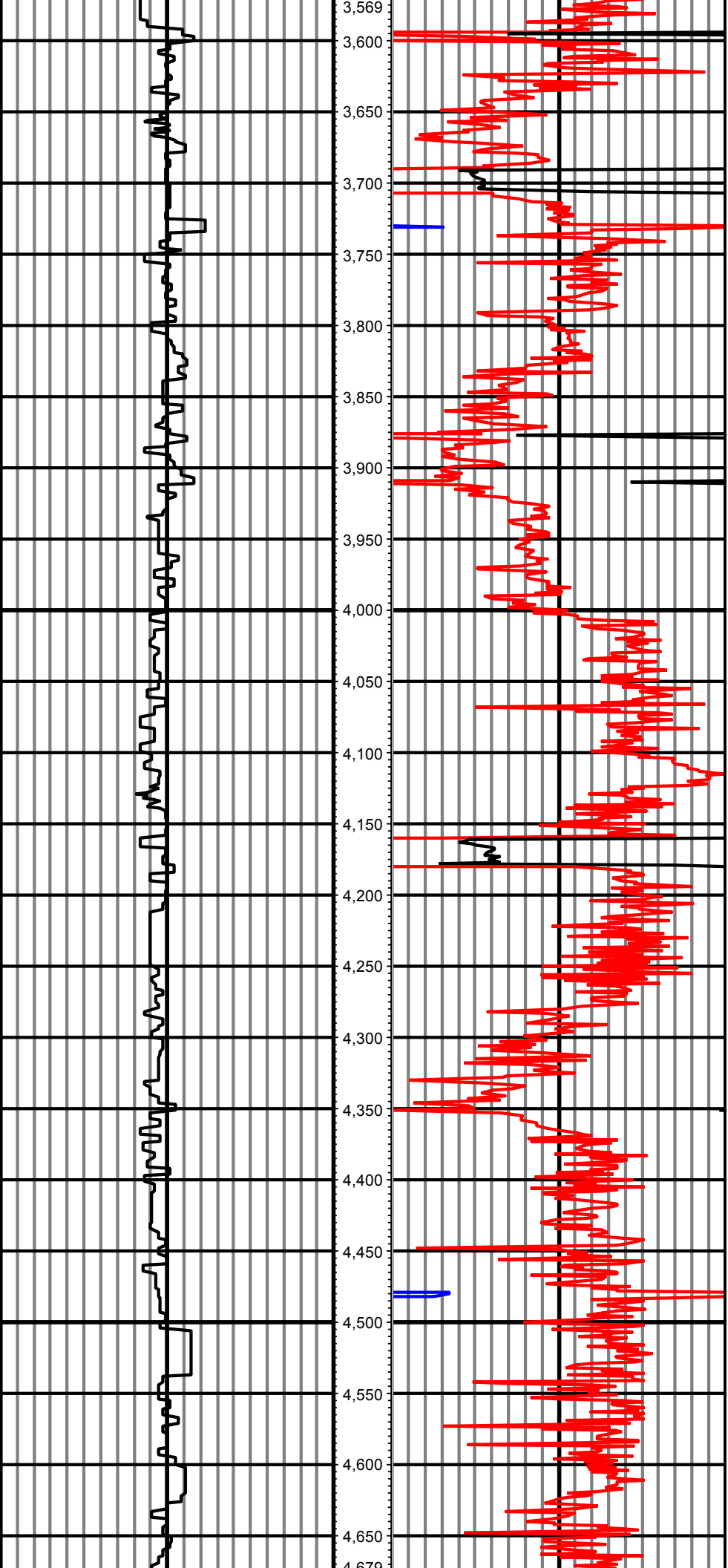
All interpretations are opinions based on inferences from electrical or other measurements and we cannot and do not guarantee the accuracy or correctness of any interpretation, and we shall not except in the case of gross or willful negligence on our part, be liable or responsible for any loss, cost damages or expenses incurred or sustained by anyone resulting from an interpretation made by any of our officers, agents, or employees.

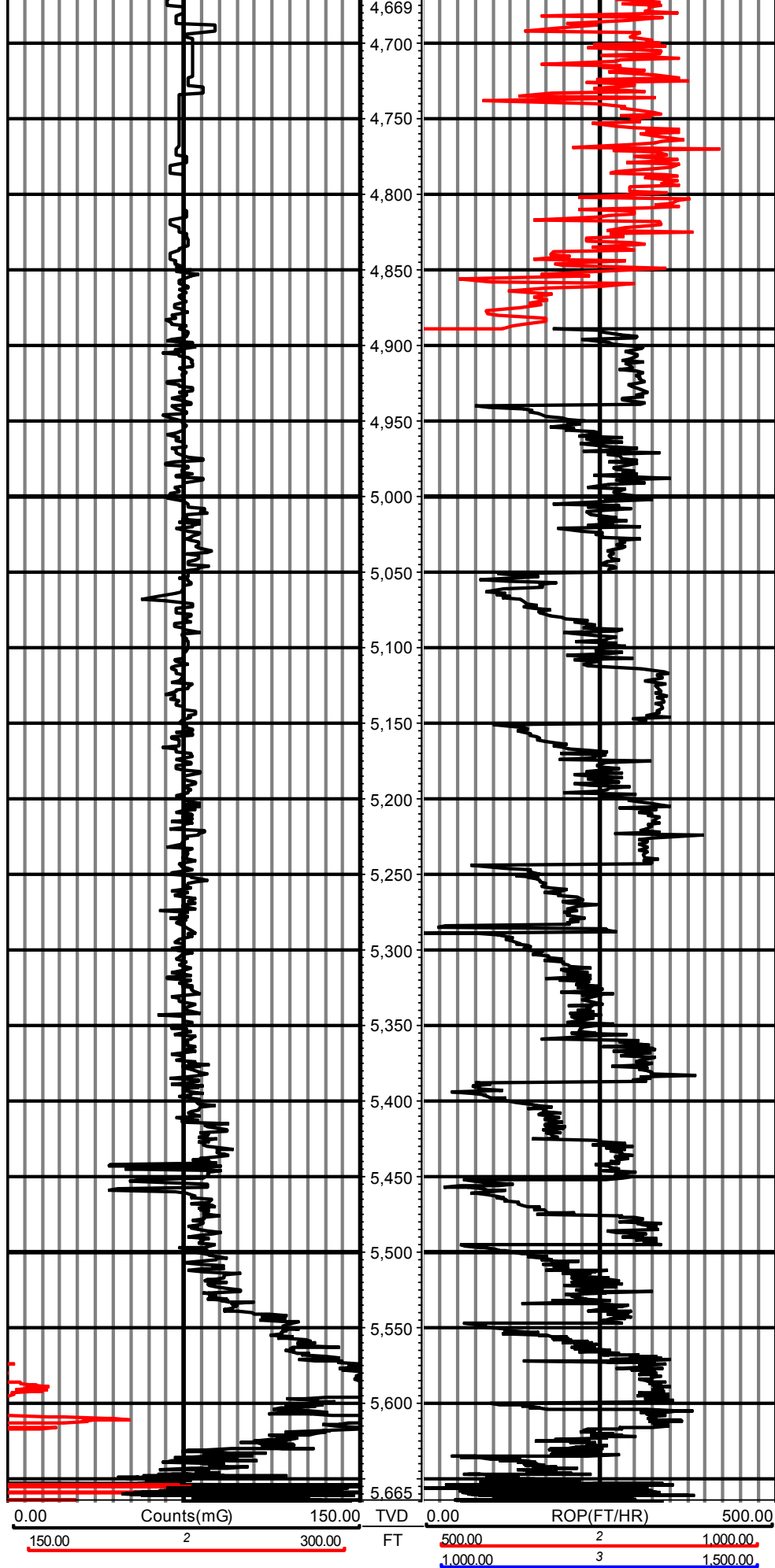
0.00 Counts(mG) 150.00 TVD 0.00 ROP(FT/HR) 500.00
 150.00 2 300.00 FT 500.00 2 1,000.00
 1,000.00 3 1,500.00













DDC

RM-13748

5":100' - TVD

9/29/2013 5:06:31 PM

Oper. Company: Noble Energy

Country: USA

State / Province: Colorado

County / Parish: Weld

Started: 09/25/2013 07:00 PM

API/UWI: 05-123-37547-00

Field: Wattenburg

Well: Rohn State LD09-68-1HN

Rig: H&P 326

Ended: 09/29/2013 05:00 PM

FINAL

Personnel

Day Hand: Chris Abbott

Night Hand: Josh Jann

Comp. Emp:

Location

Latitude: 40° 46' 14.124 N

Longitude: 103° 51' 42.120 W

Elev. GL: 4739

Elev. DF: 30

Elev. KB: 4769

Hole Data

Size	From	To
13 1/2	0	1258
8 3/4	1258	6118
6 1/8	6118	9435

Casing Data

Size	From	To
9 5/8	0	1258
7	1258	6118
4	6118	0

Bit Sizes

Size	From	To
13 1/2	0	1258
8 3/4	1258	6118
6 1/8	6118	9435

Mud Data

Type	Weight	Density	Viscosity	Rm	Rmf	Rmc	From	To
LSND	10		38				0	9435

Tool Run Data

Serial Number	Gamma Offset	Resist. Offset	Start Time	Start Depth	End Time	End Depth
1120	36	0	9/25/2013 7:00:21 PM	1258	9/26/2013 9:00:21 AM	4889
1120	44	0	9/26/2013 11:00:48 AM	4889	9/27/2013 8:00:48 AM	6118
1120	52	0	9/28/2013 10:00:06 AM	6118	9/29/2013 5:00:06 PM	9435

All interpretations are opinions based on inferences from electrical or other measurements and we cannot and do not guarantee the accuracy or correctness of any interpretation, and we shall not except in the case of gross or willful negligence on our part, be liable or responsible for any loss, cost damages or expenses incurred or sustained by anyone resulting from an interpretation made by any of our officers, agents, or employees.

