

# Rohn State LD09-63HN

**MD**  
2":100'

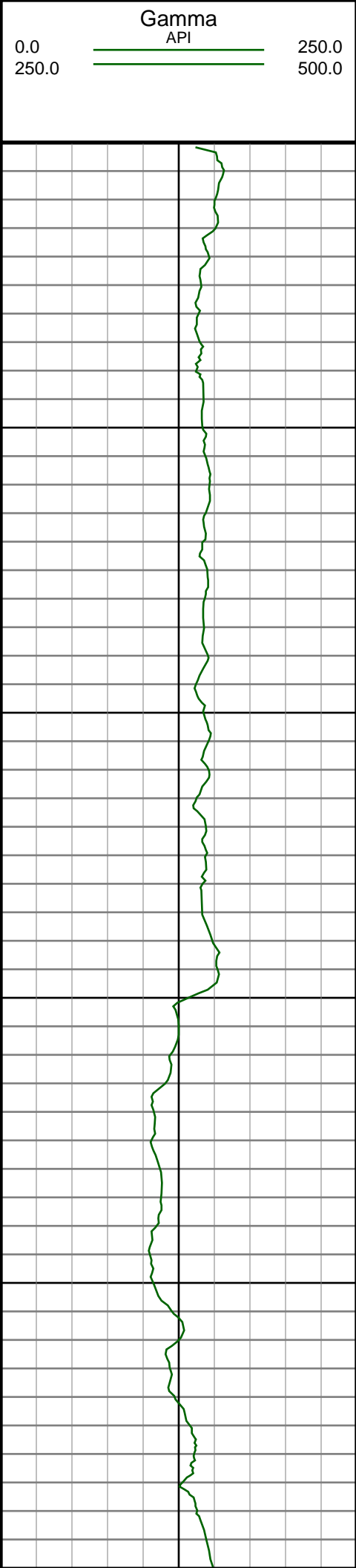
**Company:** Noble Energy Inc  
**Well Name:** Rohn State LD09-63HN  
**UWI or LSD:** 05-123-37540  
**Rig Id:** H&P 273  
**State:** Colorado  
**County/Parish:** Weld  
**Country:** USA  
**Survey Company:** Ensign Directional  
**Job number:** 139452  
**Dir. Driller Days** Kody Wood  
**Dir. Driller Nights** Brett Blank  
**MWD/LWD Days** Brennan Knerr  
**MWD/LWD Nights** Jamey House

**Log measurements:**  
**Depth measured from:**  
**Maximum temperature:**

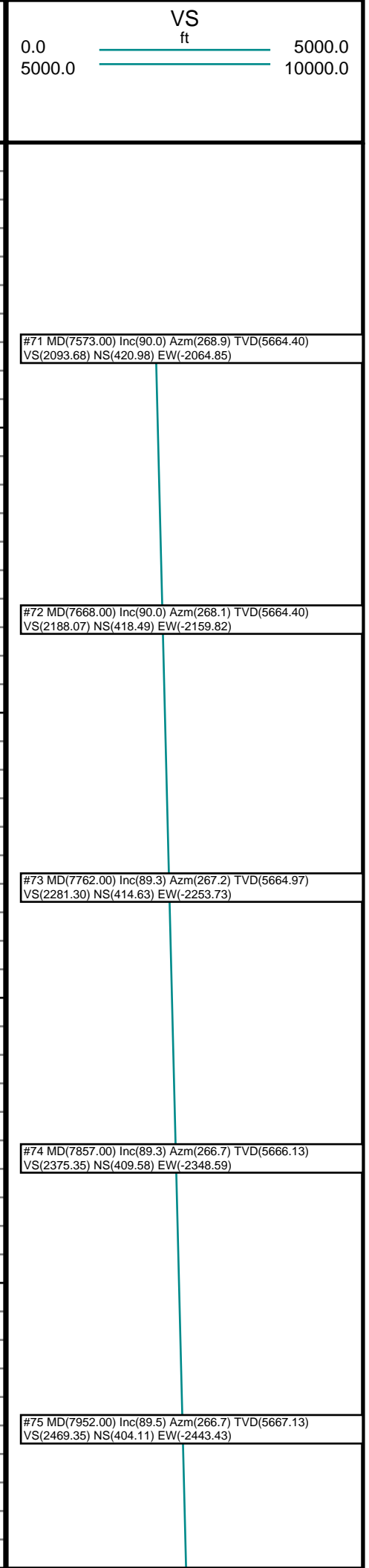
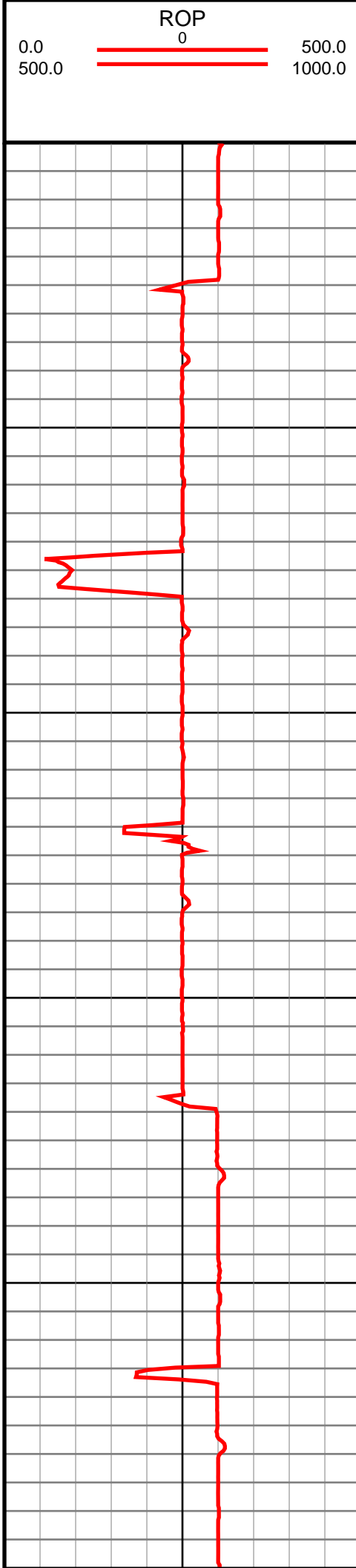
**Depth** **Date**  
**Start:** 1230 ft 11/7/2013  
**End:** 9729 ft 11/13/2013

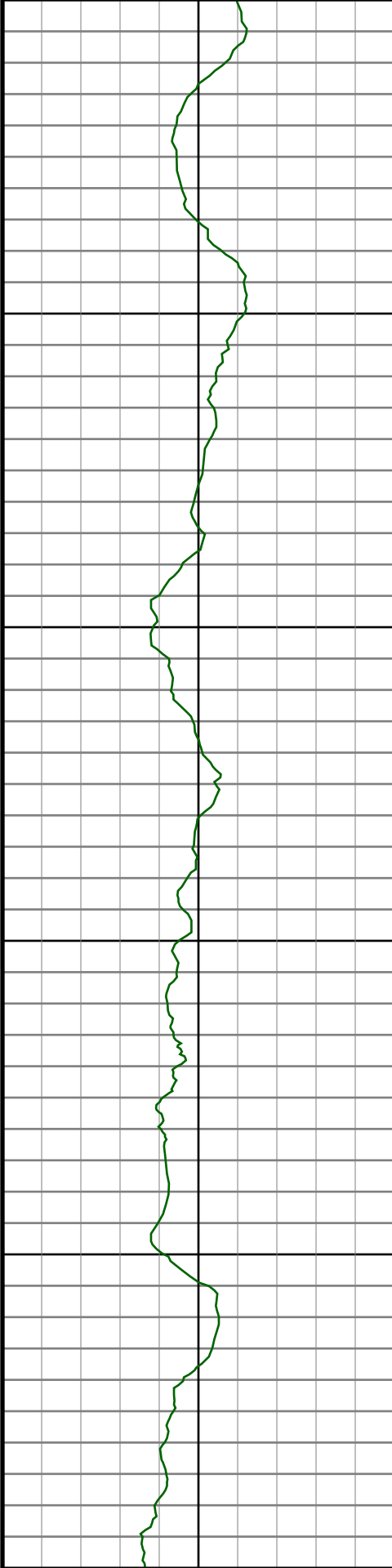
Casing	Depth	Size	Mud Type:	Elevations
Surface:	1249	9.625	Density:	KB: 4736
Intermediate:			Viscosity:	GL: 4712
			Rm:	DF: 4736
			Rmf:	
			Rmc:	

Run	Bit Size	Offsets	Gamma	Survey	Start	Depths	End	Start	Dates	End
1	8.75	-1.00	-1.00		0	1230		11/7/2013		11/8/2013
2	8.75	61.61	56.61		1230	4918		11/8/2013		11/9/2013
3	8.75	61.90	56.90		4918	6046		11/9/2013		11/10/2013
4	6.125	71.86	66.86		6046			11/11/2013		
5										
6										
7										
8										
9										
10										



MD





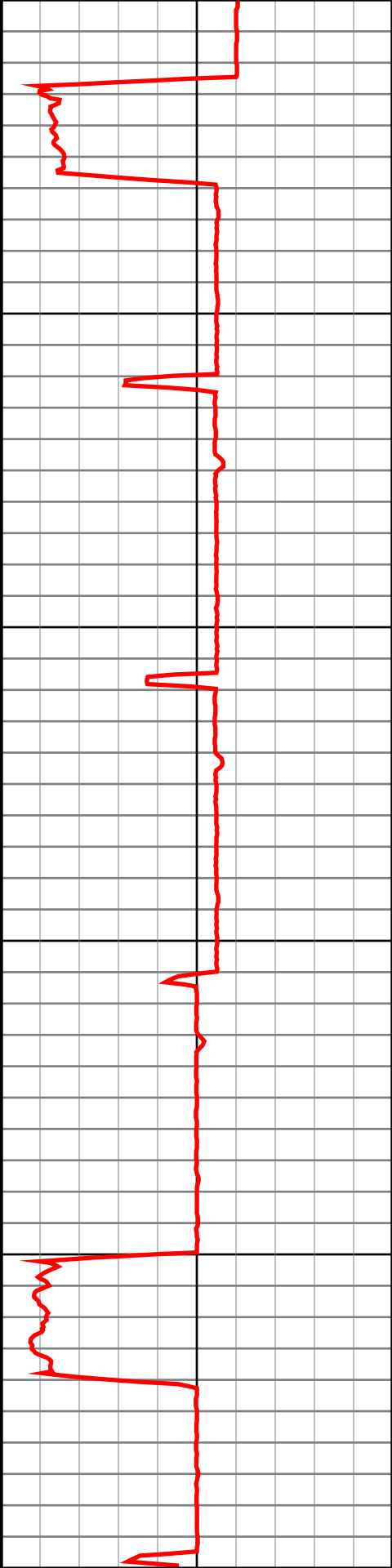
8100

8200

8300

8400

8500



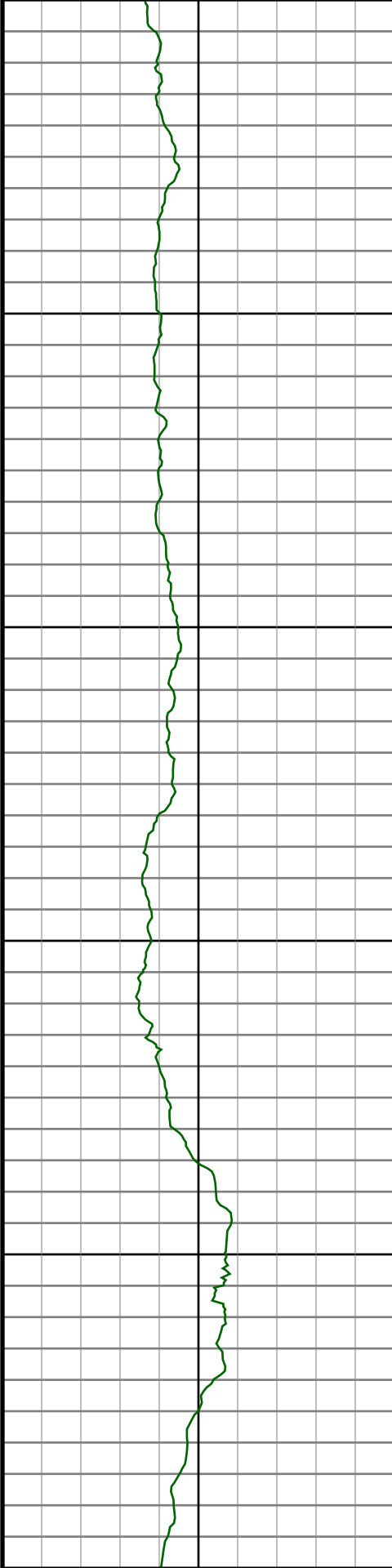
#76 MD(8047.00) Inc(90.5) Azm(268.6) TVD(5667.13)  
VS(2563.57) NS(400.22) EW(-2538.34)

#77 MD(8142.00) Inc(90.7) Azm(268.4) TVD(5666.13)  
VS(2657.95) NS(397.73) EW(-2633.31)

#78 MD(8236.00) Inc(91.2) Azm(268.1) TVD(5664.57)  
VS(2751.28) NS(394.86) EW(-2727.25)

#79 MD(8331.00) Inc(91.8) Azm(267.7) TVD(5662.09)  
VS(2845.52) NS(391.38) EW(-2822.15)

#80 MD(8426.00) Inc(90.7) Azm(269.5) TVD(5660.02)  
VS(2939.90) NS(389.06) EW(-2917.10)



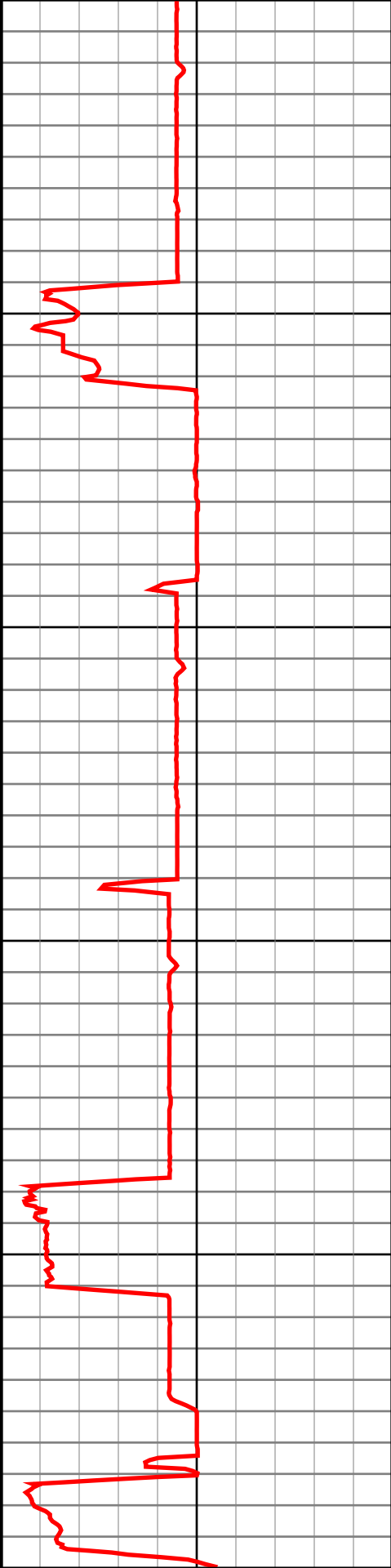
8600

8700

8800

8900

9000



#81 MD(8521.00) Inc(90.7) Azm(269.3) TVD(5658.85)  
VS(3034.44) NS(388.06) EW(-3012.08)

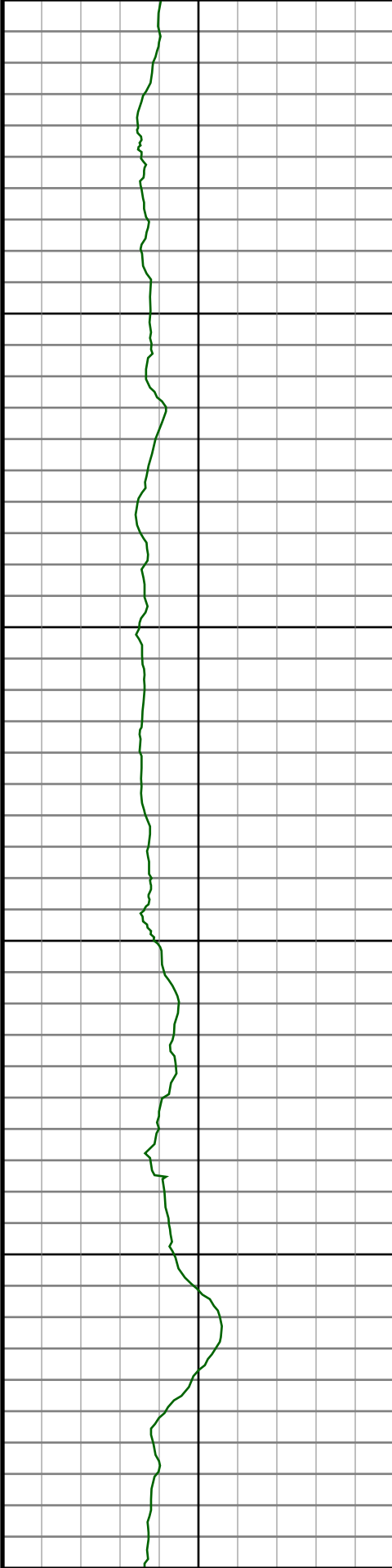
#82 MD(8615.00) Inc(90.0) Azm(270.4) TVD(5658.28)  
VS(3128.06) NS(387.82) EW(-3106.08)

#83 MD(8710.00) Inc(90.6) Azm(270.4) TVD(5657.78)  
VS(3222.75) NS(388.48) EW(-3201.07)

#84 MD(8805.00) Inc(91.0) Azm(270.4) TVD(5656.46)  
VS(3317.44) NS(389.15) EW(-3296.06)

#85 MD(8900.00) Inc(89.8) Azm(270.9) TVD(5655.79)  
VS(3412.16) NS(390.22) EW(-3391.05)

#86 MD(8994.00) Inc(88.8) Azm(270.2) TVD(5656.94)  
VS(3505.87) NS(391.13) EW(-3485.04)



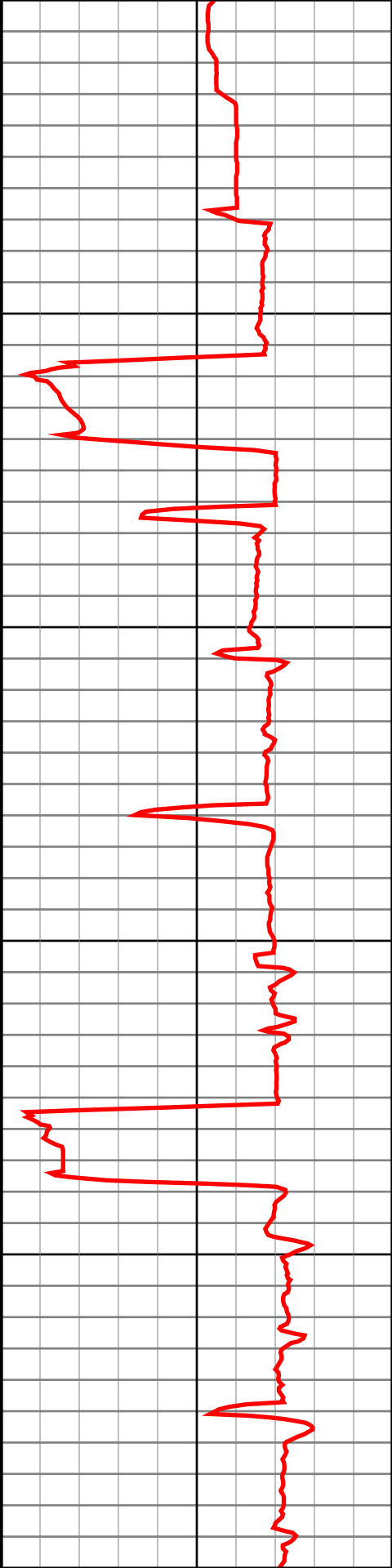
9100

9200

9300

9400

9500



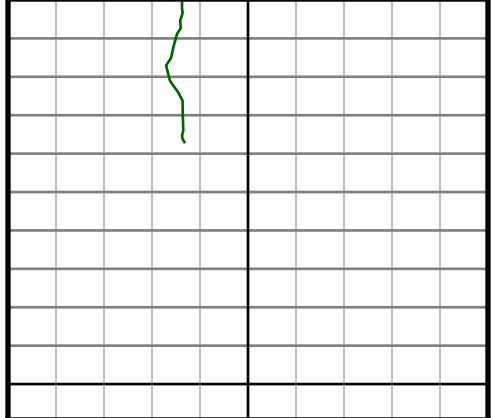
#87 MD(9089.00) Inc(89.3) Azm(270.2) TVD(5658.52)  
VS(3600.52) NS(391.46) EW(-3580.03)

#88 MD(9184.00) Inc(88.2) Azm(268.6) TVD(5660.59)  
VS(3695.04) NS(390.46) EW(-3674.99)

#89 MD(9279.00) Inc(88.9) Azm(268.9) TVD(5662.99)  
VS(3789.44) NS(388.39) EW(-3769.94)

#90 MD(9374.00) Inc(90.4) Azm(267.2) TVD(5663.57)  
VS(3883.74) NS(385.16) EW(-3864.88)

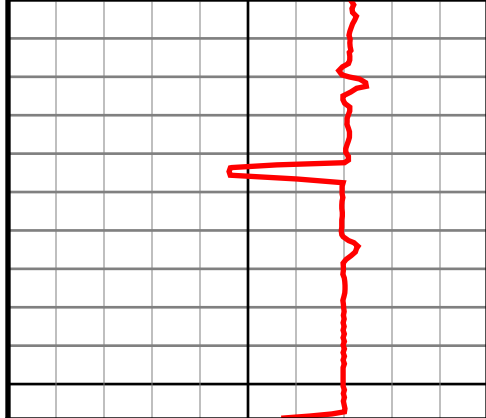
#91 MD(9468.00) Inc(90.9) Azm(267.2) TVD(5662.51)  
VS(3976.86) NS(380.57) EW(-3958.76)



9600

Gamma  
API

0.0 250.0  
250.0 500.0



ROP  
0

0.0 500.0  
500.0 1000.0

#92 MD(9540.00) Inc(90.9) Azm(266.8) TVD(5661.38)  
VS(4048.15) NS(376.80) EW(-4030.65)

VS  
ft

0.0 5000.0  
5000.0 10000.0