

LOG created using L PLOT VH Version 3.0, November 13, 2013, Copyright (C) 1999-2009 Pason Systems Corp.

OPERATOR:	NOBLE ENERGY INC
WELL:	ROHN STATE LD09-63HN
LOCATION:	SESE SEC 9 T9N R58W
COUNTY:	WELD
STATE:	COLORADO
SPOT:	885' FSL; 480' FEL
ELEVATION:	4716' GL; 4740' KB
FIELD:	WILDCAT
SPUD DATE:	11/07/2013
TD DATE:	11/09/2013
DATES LOGGED:	11/08/2013 - 11/10/2013
DEPTHS LOGGED:	1256' - 4918' MD
LOGGERS:	LAURA KELLOGG; CONOR PESICKA
DRILLING FLUID:	LSND
DRILLING RIG:	H&P 273
API:	05-123-37543
LOG TYPE:	VERTICAL
SCALE:	1:240 (5 inches per 100 feet)
REMARKS:	WELLSITE GEOLOGIC SERVICES PROVIDED BY COLUMBINE LOGGING INC.

LITHOLOGIES



Sandstone



Shaly Sandstone



Silty Shale

ENGINEERING SYMBOLS



Connection



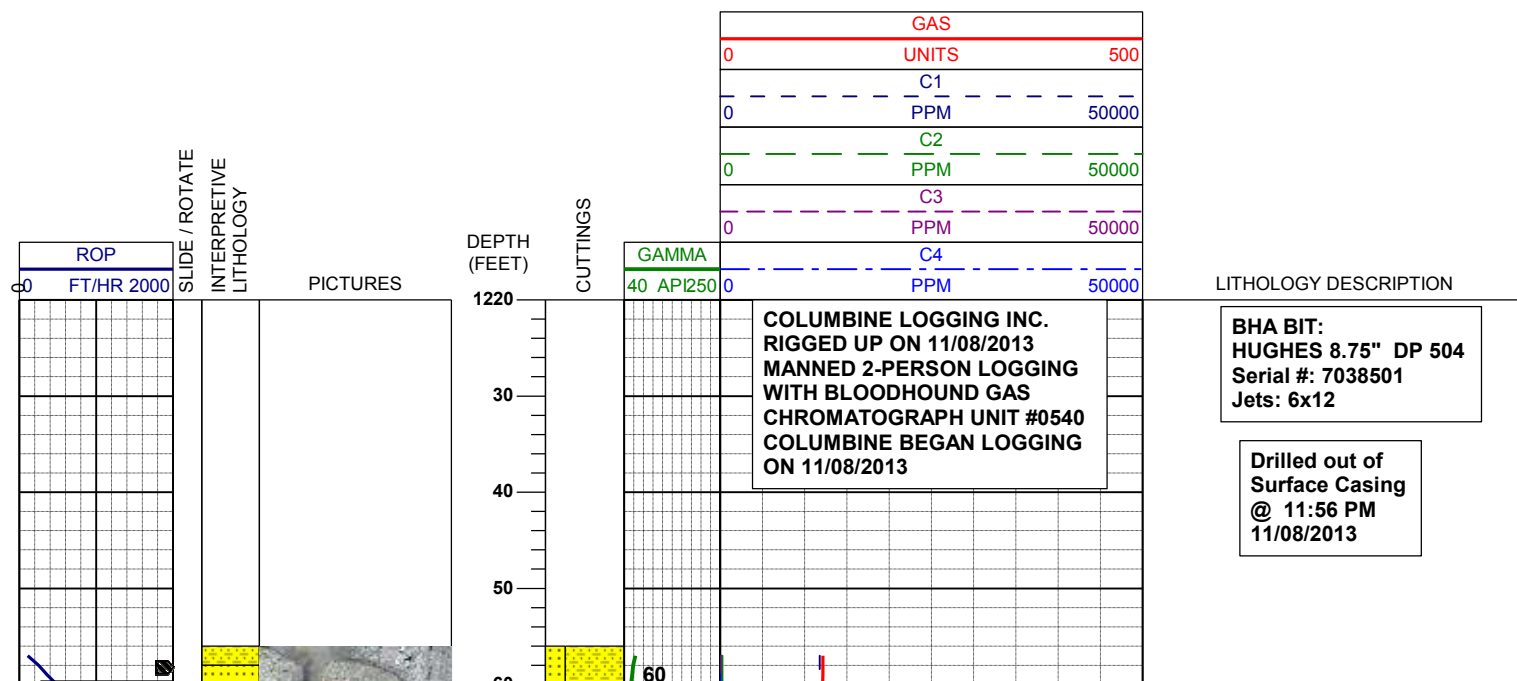
Connection Gas



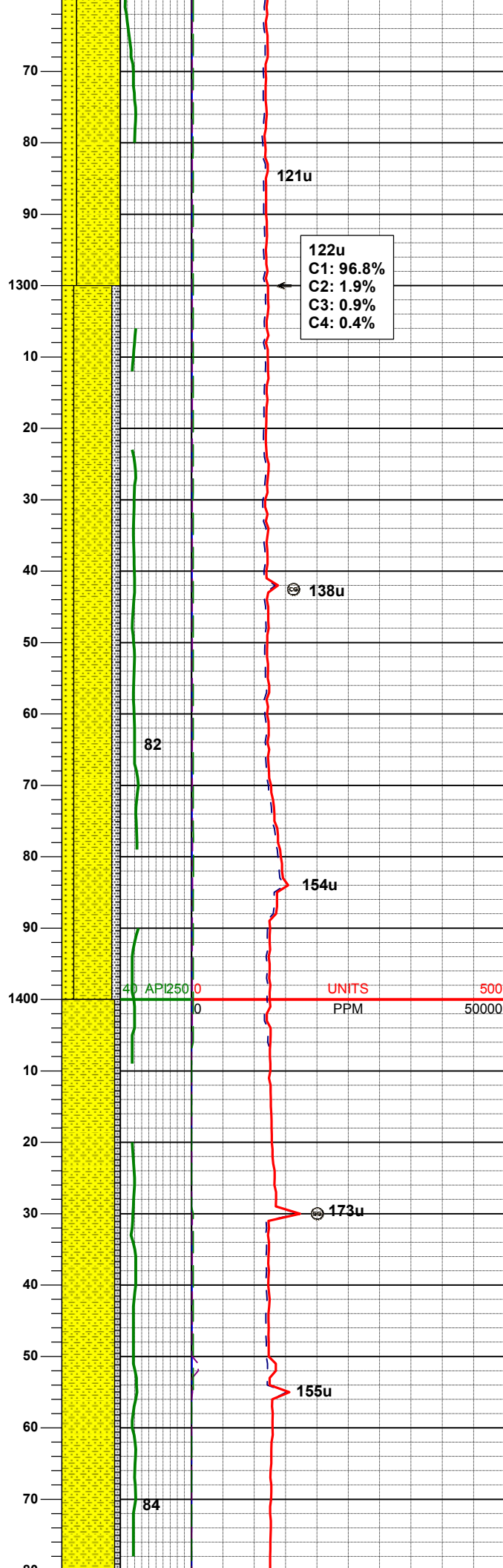
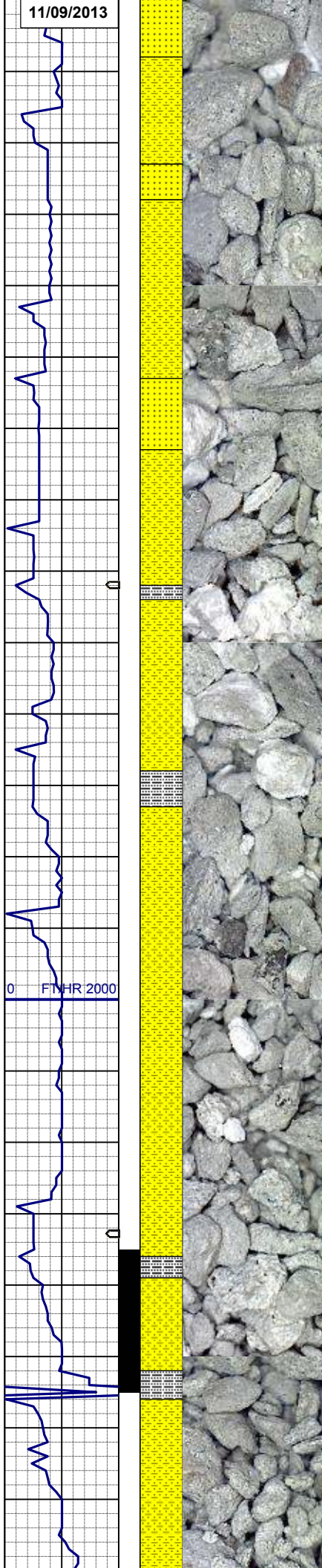
Arrow



Midnight Depth



11/09/2013



SHYSS: ltgy-gy, s&p ip, sbang, v fri, vfgr, vpsrt, smwtrnodd, abnt cly, arg cmt, tr lt lit frag
SS: ltgy-trnsl, sbang-ang, v fri, fgr, v psrt, prnodd, arg cmt, abnt glau

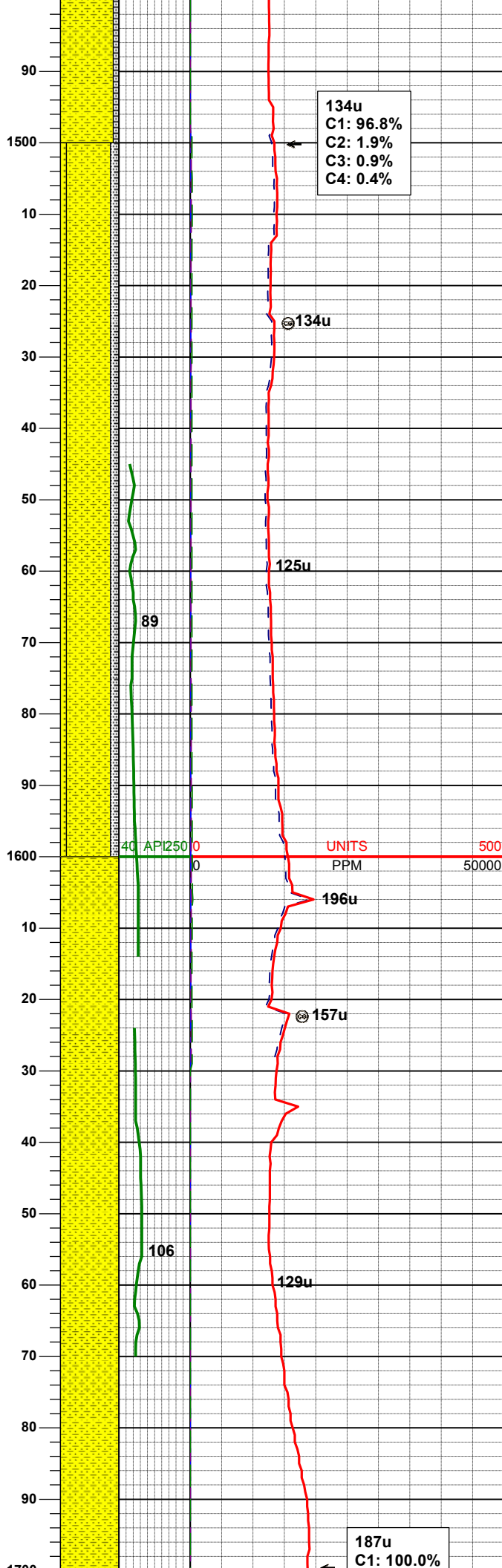
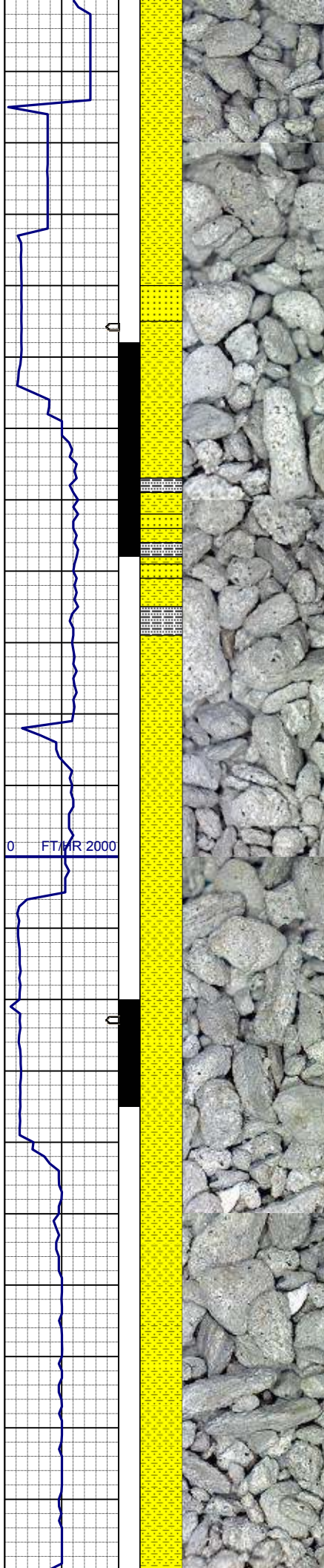
MD	1282'
INC	0.9°
AZM	263.0°
TVD	1281.96'

SHYSS: ltgy-gy, s&p ip, sbang, v fri, vfgr, modsrt, wrnodd, abnt cly, arg cmt
SS: ltgy-trnsl, sme op, sbang-ang, v fri, fgr, v psrt, prnodd, mod por, arg cmt, abnt glau
SLTYSH: ltgy-gy, sbblky-sbplty, v sft, gt-sdy tex, arg cmt

MD	1375'
INC	1.2°
AZM	263.0°
TVD	1374.95'

SHYSS: ltgy-gy, s&p ip, sbang, v fri, vfgr, modsrt, wrnodd, abnt cly, arg cmt
SLTYSH: ltgy-gy, sbblky-sbplty, v sft, gt-sdy tex, arg cmt

MD	1468'
INC	0.9°
AZM	281.4°
TVD	1467.92'

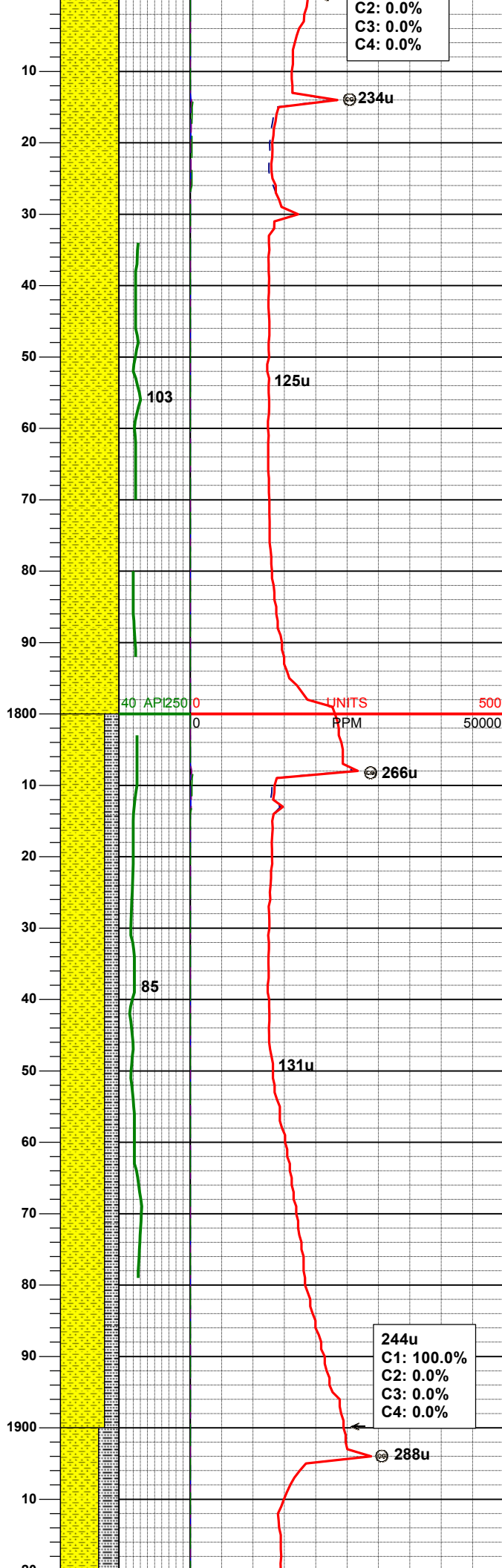
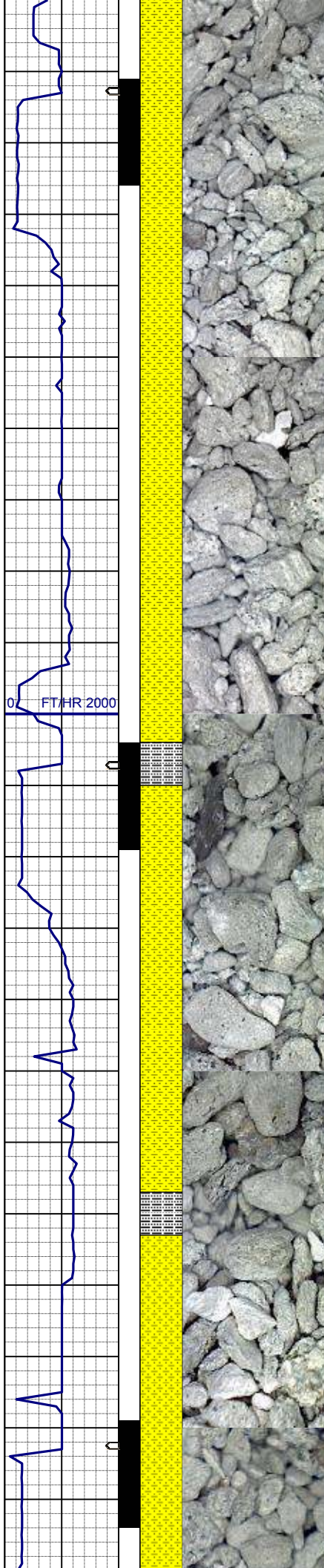


SHYSS: ltgy-gy, s&p ip, sbang, v fri,
vfgr, modsrt, wrnnd, abnt cly, arg cmt
SLTYSH: ltgy-gy, sbblky-sbply, v sft,
gt-sdy tex, arg cmt
SS: ltgy-trnsl, sbang-ang, v fri, fgr, v
psrt, prnnd, mod por, arg cmt, occ
glau

MD	1560'
INC	2.4°
AZM	26.7°
TVD	1559.90'

SHYSS: ltgy-gy, s&p ip, sbang, v fri,
vfgr, modsrt, wrnnd, abnt cly, arg cmt

MD	1651'
INC	4.1°
AZM	19.0°
TVD	1650.75'



C2: 0.0%
C3: 0.0%
C4: 0.0%

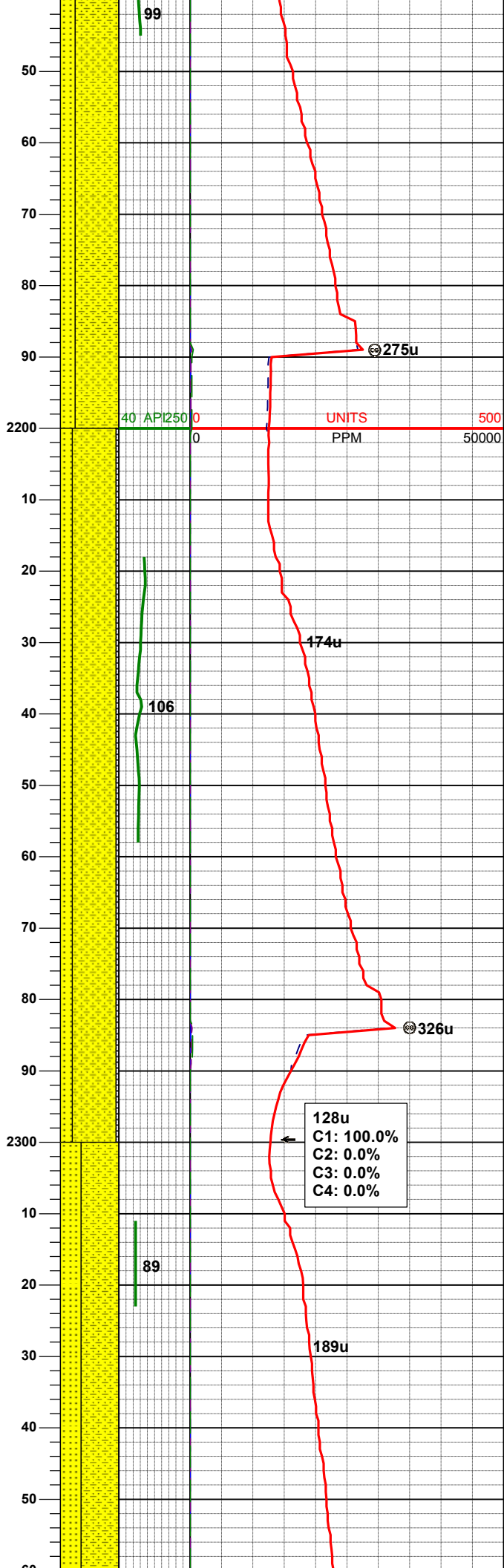
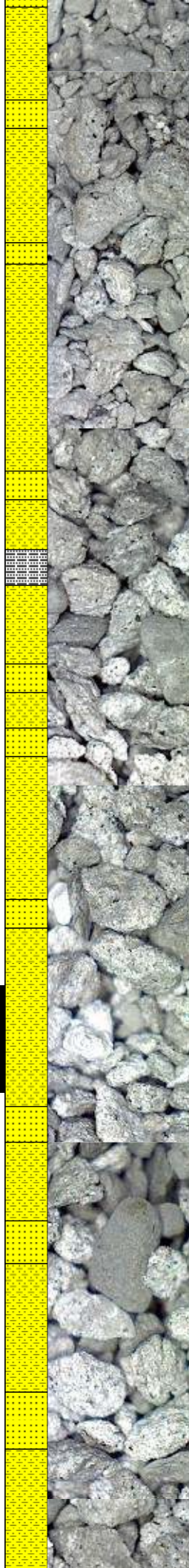
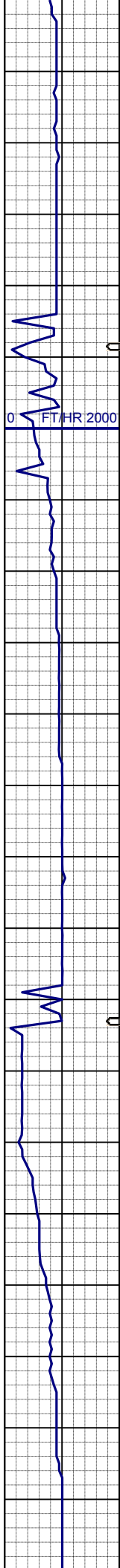
MD 1744'
INC 5.7°
AZM 20.4°
TVD 1743.40'

SHYSS: ltgy-gy, s&p ip, sbang, v fri,
vfgr, modsrt, wrnnd, abnt cly, arg cmt

MD 1839'
INC 7.3°
AZM 22.5°
TVD 1837.79'

SHYSS: ltgy-gy, s&p ip, sbang, v fri,
vfgr, modsrt, wrnnd, abnt cly, arg cmt
SLTYSH: ltgy-gy, sbblky-sbply, v sft,
gt-sdy tex, arg cmt

244u
C1: 100.0%
C2: 0.0%
C3: 0.0%
C4: 0.0%



SHYSS: ltgy-gy, s&p ip, sbang, v fri, vfgr, modsrt, wrnnd, abnt cly, arg cmt
SS: ltgy-trnsl, sbang-ang, v fri, fgr, v psrt, prnnd, mod por, arg cmt, abnt glau

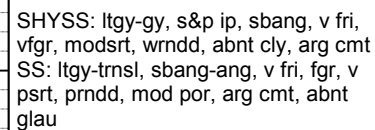
WT IN 8.40+ OUT 8.40+
VIS IN 27/ OUT 27

MD	2218'
INC	10.9°
AZM	21.1°
TVD	2211.09'

SHYSS: ltgy-gy, s&p ip, sbang, v fri, vfgr, modsrt, wrnnd, abnt cly, arg cmt
SS: ltgy-trnsl, sbang-ang, v fri, fgr, v psrt, prnnd, mod por, arg cmt, occ glau
SLTYSH: ltgy-gy, sbbiky-sbply, v sft, gt-sdy tex, arg cmt

MD	2313'
INC	12.1°
AZM	18.6°
TVD	2304.18'

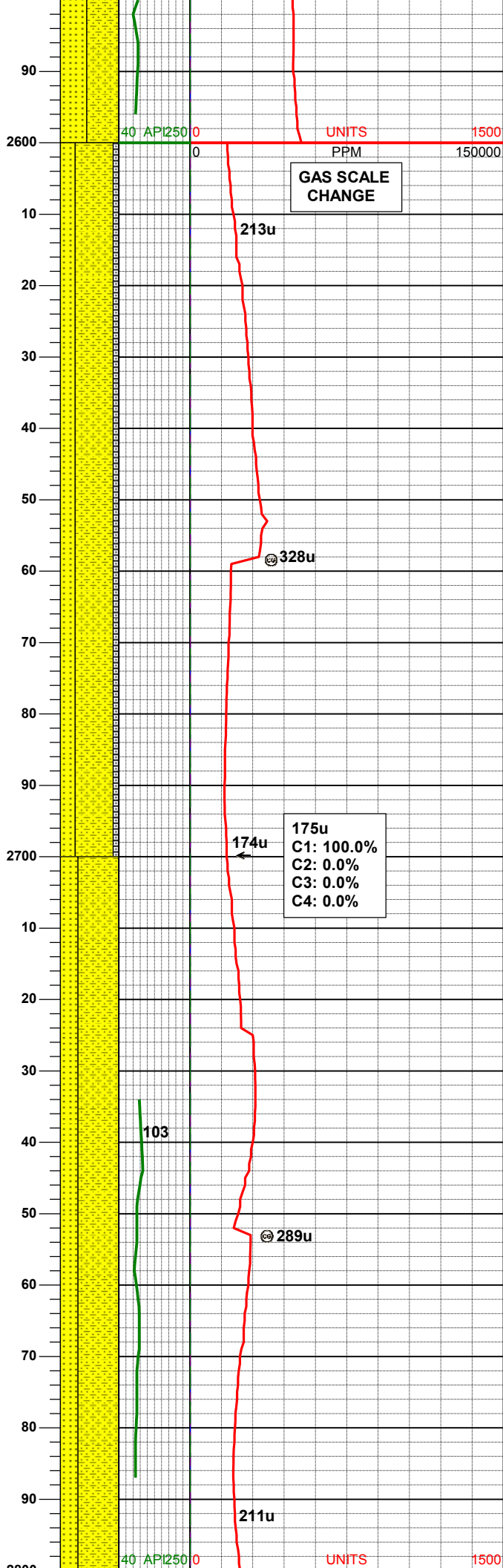
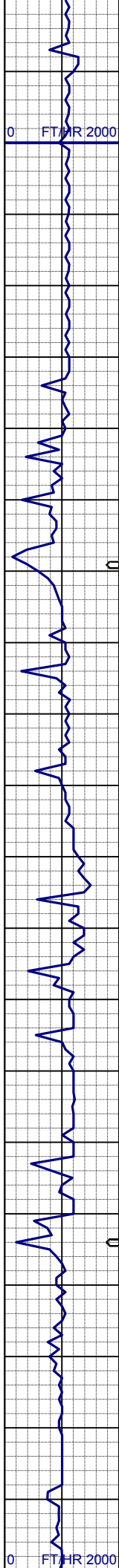
SHYSS: ltgy-gy, s&p ip, sbang, v fri, vfgr, modsrt, wrnnd, abnt cly, arg cmt
SS: ltgy-trnsl, sbang-ang, v fri, fgr, v psrt, prnnd, mod por, arg cmt, abnt glau



MD	2408'
INC	12.1°
AZM	18.3°
TVD	2397.07'

MD	2503'
INC	12.0°
AZM	18.1°
TVD	2489.98'

SHYSS: ltgy-gy, s&p ip, sbang, v fri,
vfgr, modsrt, wrndd, tr cly, arg cmt
SS: ltgy-trnsl, sbang-ang, v fri, fgr, v
psrt, prndd, mod por, arg cmt, abnt
glau



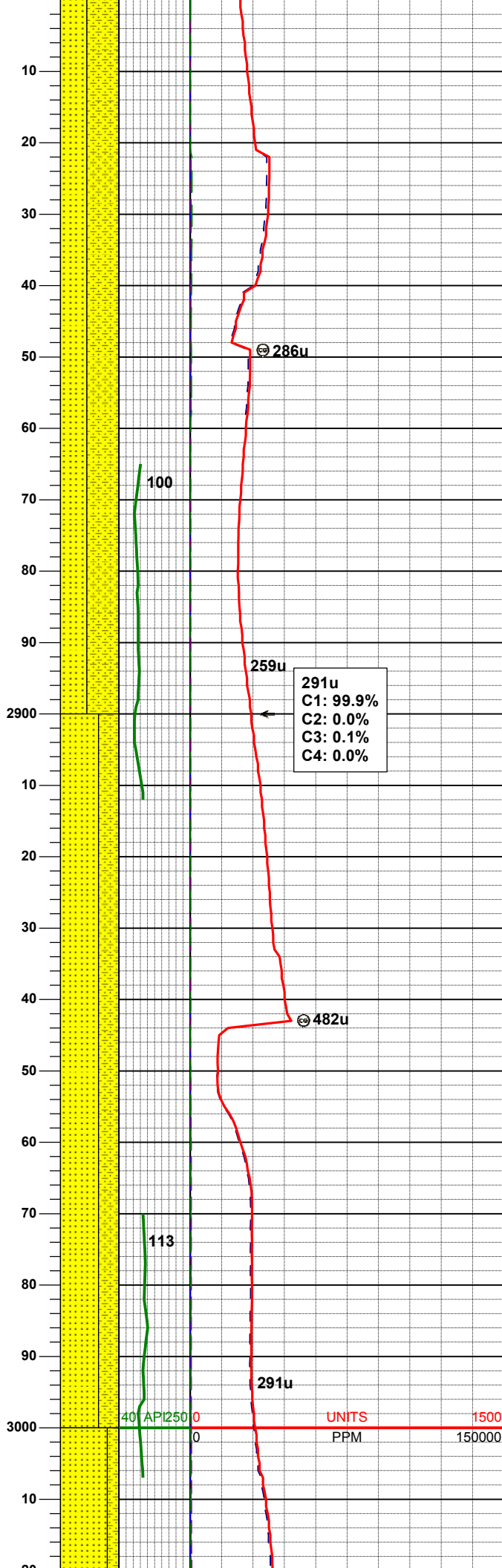
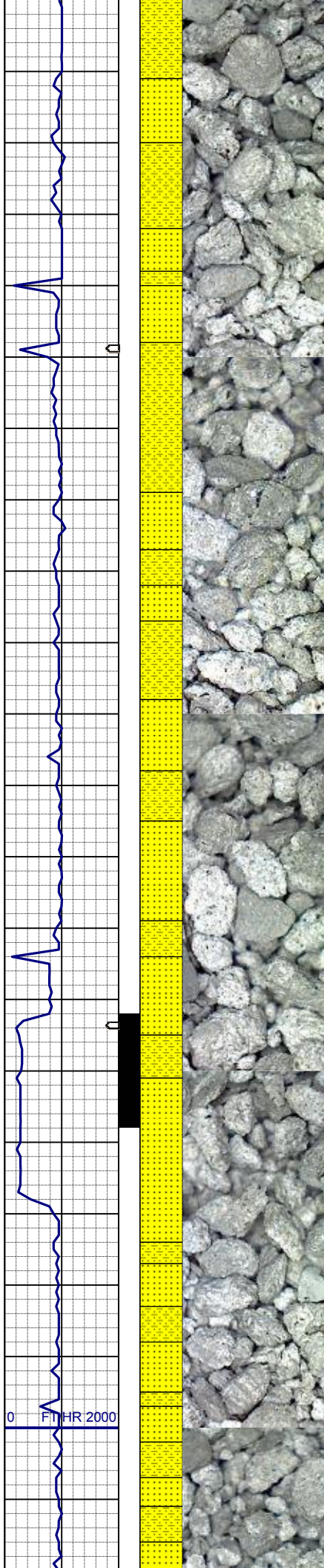
MD 2598'
INC 11.8°
AZM 17.9°
TVD 2582.94'

SHYSS: ltgy-gy, s&p ip, sbang, v fri, vfgr, modsrt, wrnnd, abnt cly, arg cmt
SS: ltgy-trnsl, s&p ip, sbang-ang, v fri, fgr, v psrt, prnnd, mod por, arg cmt, abnt glau, abnt lith frag,
SLTYSH: ltgy-gy, sbblky-sbplty, v sft, gt-sdy tex, arg cmt

MD 2693'
INC 11.5°
AZM 17.9°
TVD 2675.98'

SHYSS: ltgy-gy, s&p ip, sbang, v fri, vfgr, modsrt, wrnnd, abnt cly, arg cmt
SS: ltgy-trnsl, s&p ip, sbang-ang, v fri, fgr, v psrt, prnnd, mod por, arg cmt, abnt glau, abnt lith frag

MD 2787'
INC 11.2°
AZM 17.6°
TVD 2768.14'



SHYSS: ltgy-gy, s&p ip, sbang, v fri, vfgr, modsrt, wrnnd, abnt cly, arg cmt
SS: ltgy-trnsl, s&p ip, sbang-ang, v fri, fgr, v psrt, prnnd, mod por, arg cmt, abnt glau, abnt lith frag

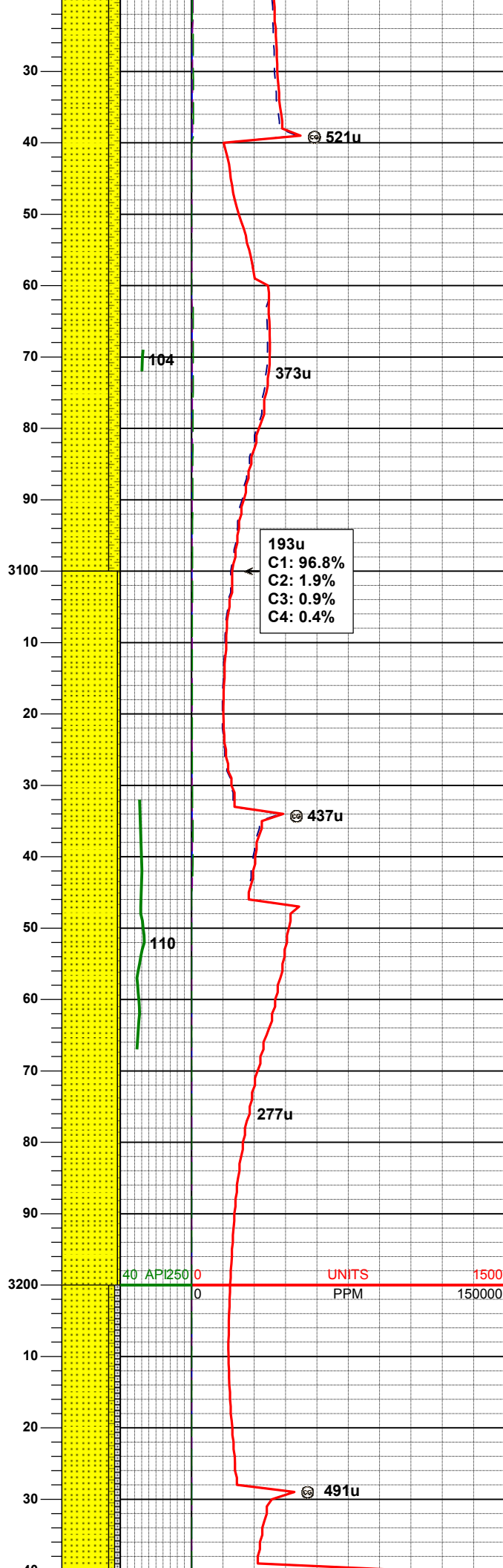
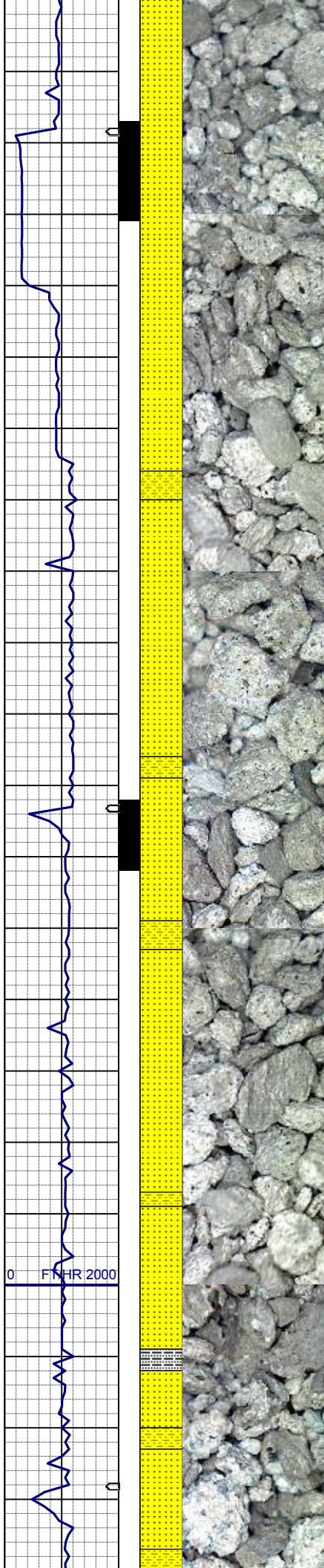
MD	2882'
INC	10.2°
AZM	17.0°
TVD	2861.49'

291u
C1: 99.9%
C2: 0.0%
C3: 0.1%
C4: 0.0%

SS: ltgy-trnsl, s&p ip, sbang-ang, v fri, fgr, v psrt, prnnd, mod por, arg cmt, abnt glau, abnt lith frag, tr uncons
SHYSS: ltgy-gy, s&p ip, sbang, v fri, vfgr, modsrt, wrnnd, abnt cly, arg cmt

MD	2977'
INC	10.4°
AZM	21.6°
TVD	2954.96'

WT IN 8.50+/- OUT 8.50+
VIS IN 27/ OUT 27



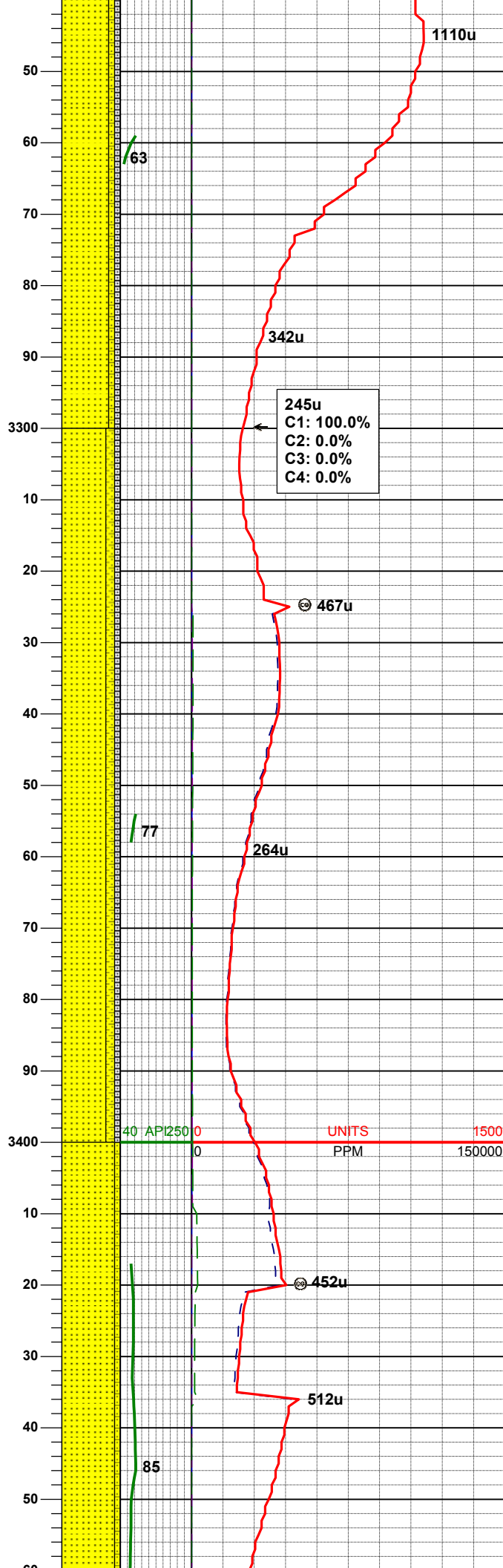
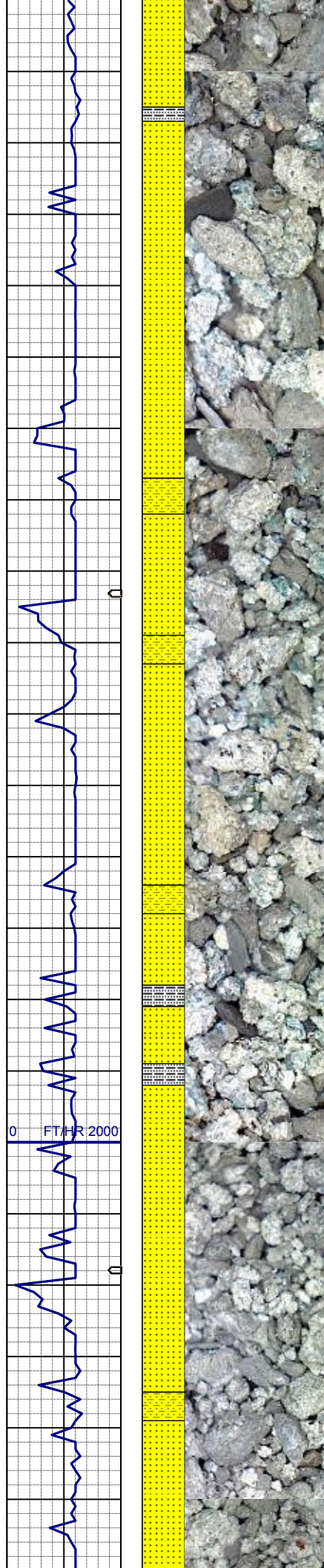
SS: ltgy-trnsl, s&p ip, sbang-ang, v fri,
fgr, v psrt, prnrd, mod por, arg cmt,
abnt glau, abnt lith frag, tr uncon
SHYSS: ltgy-gy, s&p ip, sbang, v fri,
vfgr, modsrt, wrnrd, abnt cly, arg cmt

MD	3072'
INC	11.9°
AZM	20.7°
TVD	3048.16'

193u
C1: 96.8%
C2: 1.9%
C3: 0.9%
C4: 0.4%

SS: ltgy-trnsl, s&p ip, sbang-ang, v fri,
fgr, v psrt, prnrd, mod por, arg cmt,
abnt glau, abnt dk lith frag, tr uncon
SHYSS: ltgy-gy, sbang, v fri, vfgr,
modsrt, wrnrd, abnt cly, arg cmt

MD	3167'
INC	12.1°
AZM	20.6°
TVD	3141.09'



SS: ltgy-trnsl, s&p ip, sbang-ang, v fri, fgr, v psrt, prnnd, mod por, arg cmt, abnt glau, abnt dk lith frag, tr uncon

SHYSS: ltgy-gy, s&p ip, sbang, v fri, vfgr, modsrt, wrnnd, abnt cly, arg cmt

SLTYSH: ltgy-gy, sbblky-sbply, v sft, gt-sdy tex, arg cmt

MD	3262'
INC	12.3°
AZM	19.2°
TVD	3233.94'

SS: ltgy-trnsl, s&p ip, sbang-ang, v fri, fgr, v psrt, prnnd, mod por, arg cmt, abnt glau, abnt dk lith frag, tr dism pyr, tr uncon

SHYSS: ltgy-gy, sbang, v fri, vfgr, modsrt, wrnnd, abnt cly, arg cmt

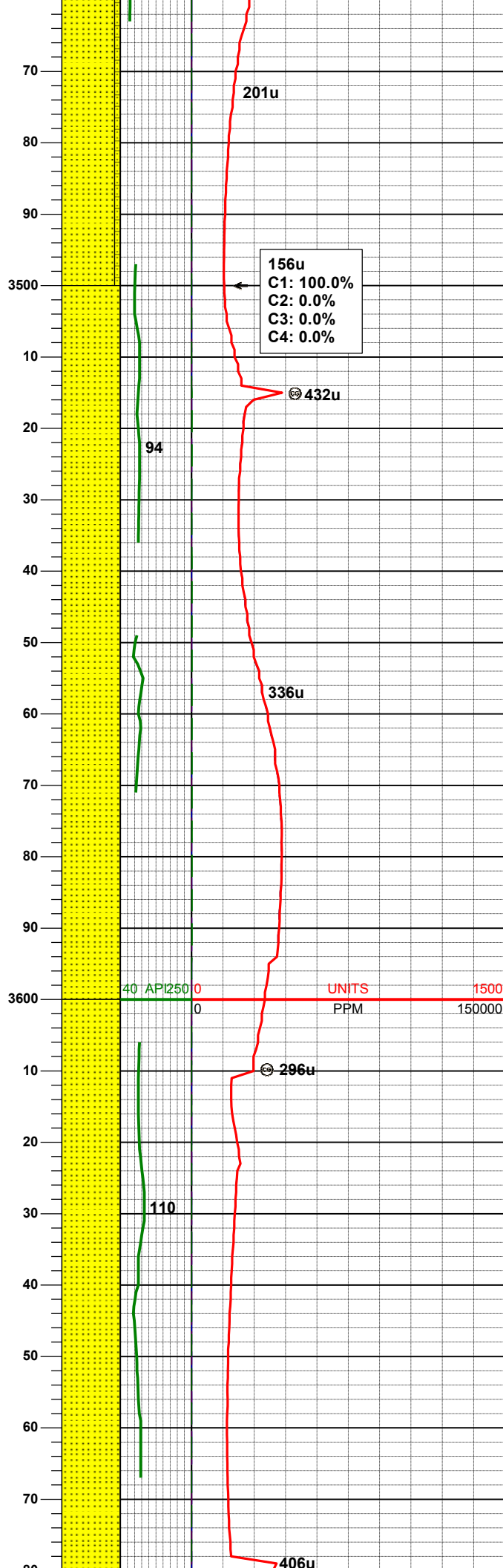
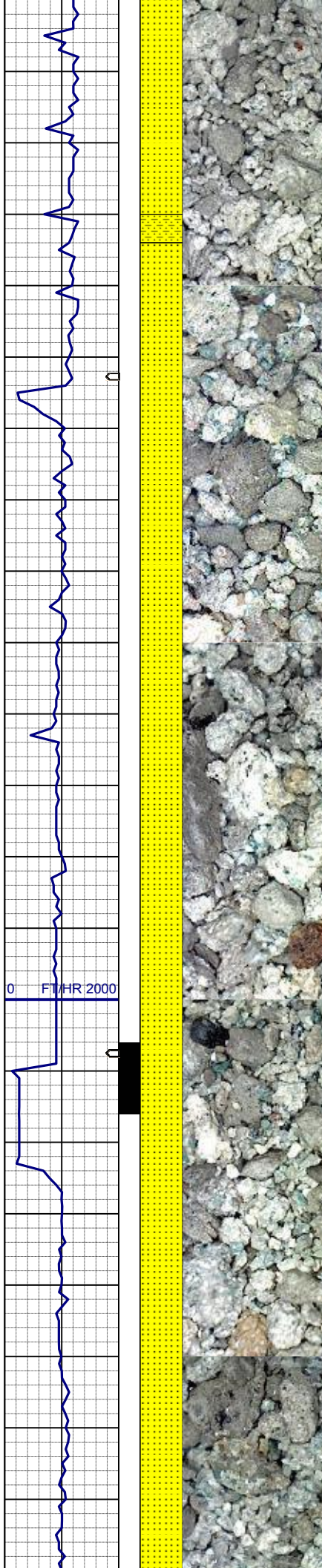
SLTYSH: ltgy-gy, sbblky-sbply, v sft, gt-sdy tex, arg cmt

MD	3357'
INC	12.3°
AZM	18.3°
TVD	3326.76'

SS: ltgy-trnsl, s&p ip, sbang-ang, v fri, fgr, v psrt, prnnd, mod por, arg cmt, abnt glau, abnt dk lith frag, uncon

SHYSS: ltgy-gy, sbang, v fri, vfgr, modsrt, wrnnd, abnt cly, arg cmt

MD	3451'
INC	12.3°
AZM	16.3°
TVD	3418.60'



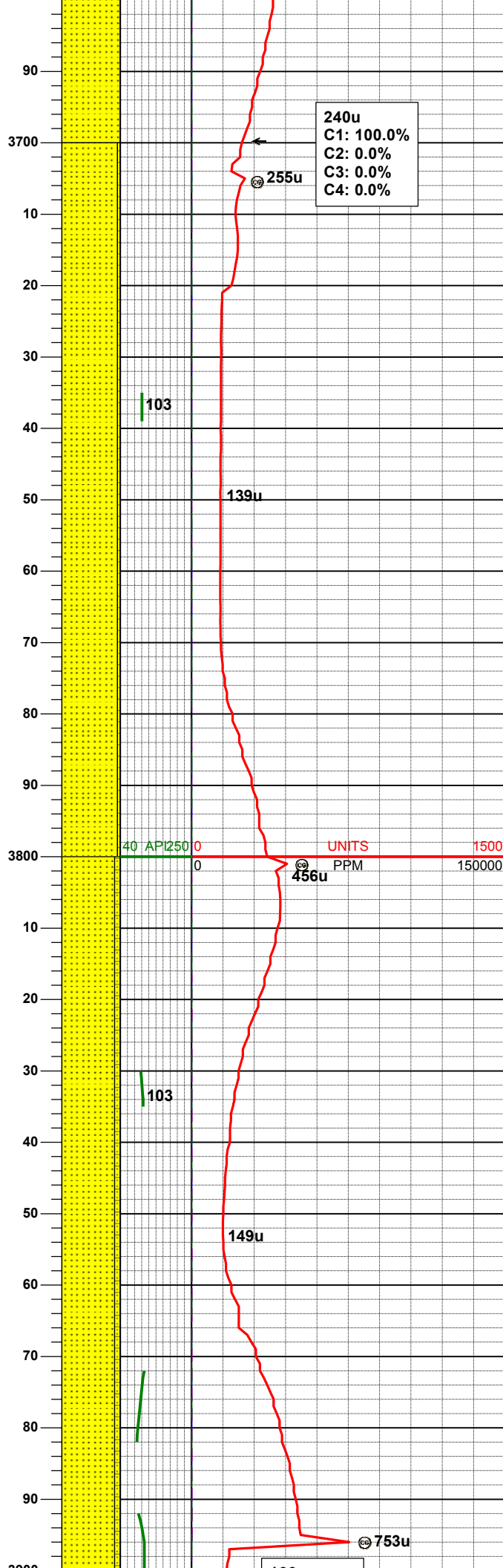
WT IN 8.60+/- OUT 9.00
VIS IN 26/ OUT 26

MD 3546'
INC 12.6°
AZM 16.5°
TVD 3511.37'

SS: ltgy-trnsl, s&p ip, sbang-ang, v fri,
fgr, v psrt, prnld, mod por, arg cmt,
abnt glau, abnt dk lith frag, tr dism
pyr, tr mica, uncons

MD 3641'
INC 10.5°
AZM 14.8°
TVD 3604.44'

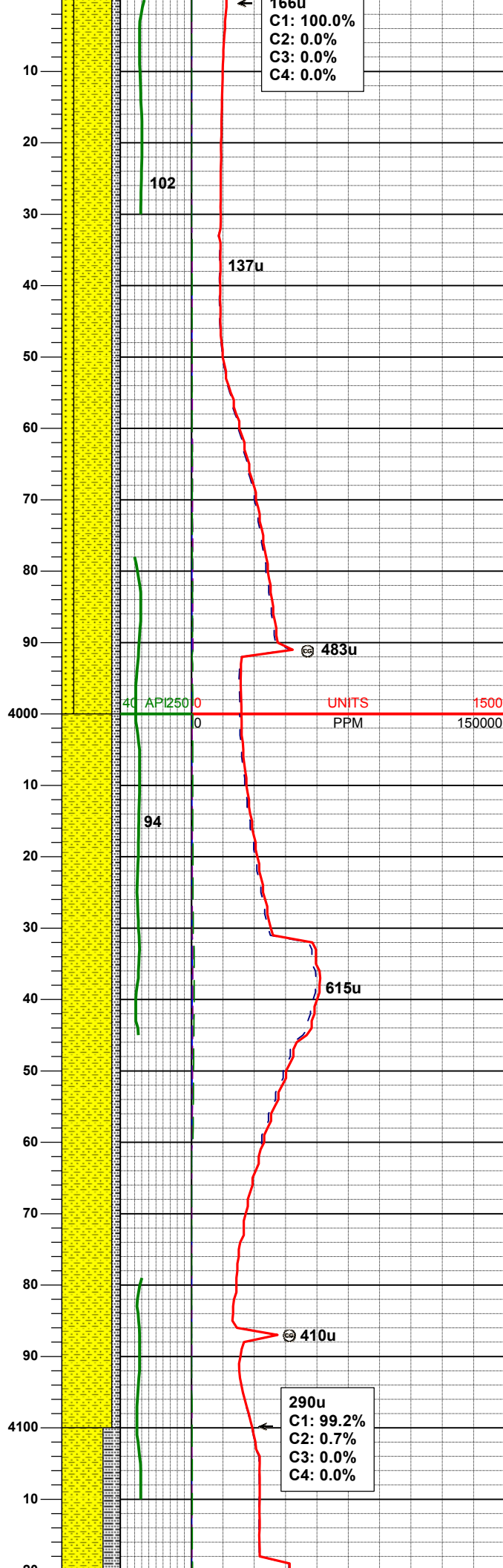
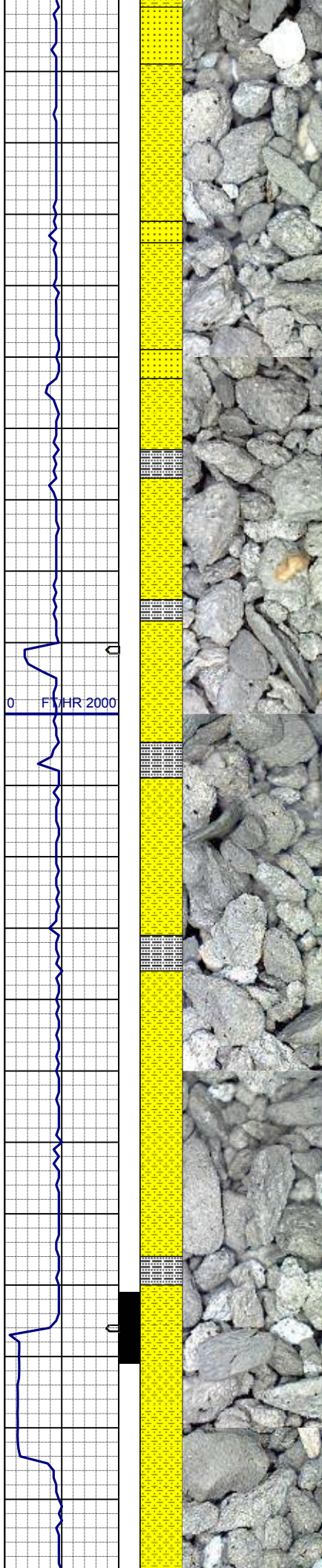
SS: ltgy-trnsl, s&p ip, sbang-ang, v fri,
fgr, v psrt, prnld, mod por, arg cmt,
abnt glau, abnt dk lith frag, uncons



SS: ltgy-trnsl, s&p ip, sbang-ang, v fri,
fgr, v psrt, prnnd, mod por, arg cmt,
abnt glau, abnt dk lith frag, tr pyr,
uncons
SHYSS: ltgy-gy, sbang, v fri, vfgr,
modsr, wrnnd, abnt cly, arg cmt

MD 3831'
INC 7.5°
AZM 22.9°
TVD 3792.16'

SS: ltgy-trnsl, s&p ip, sbang-ang, v fri,
fgr, v psrt, prnnd, mod por, arg cmt,
abnt glau, abnt dk lith frag, uncons
SHYSS: ltgy-gy, sbang, v fri, vfgr,
modsr, wrnnd, abnt cly, arg cmt



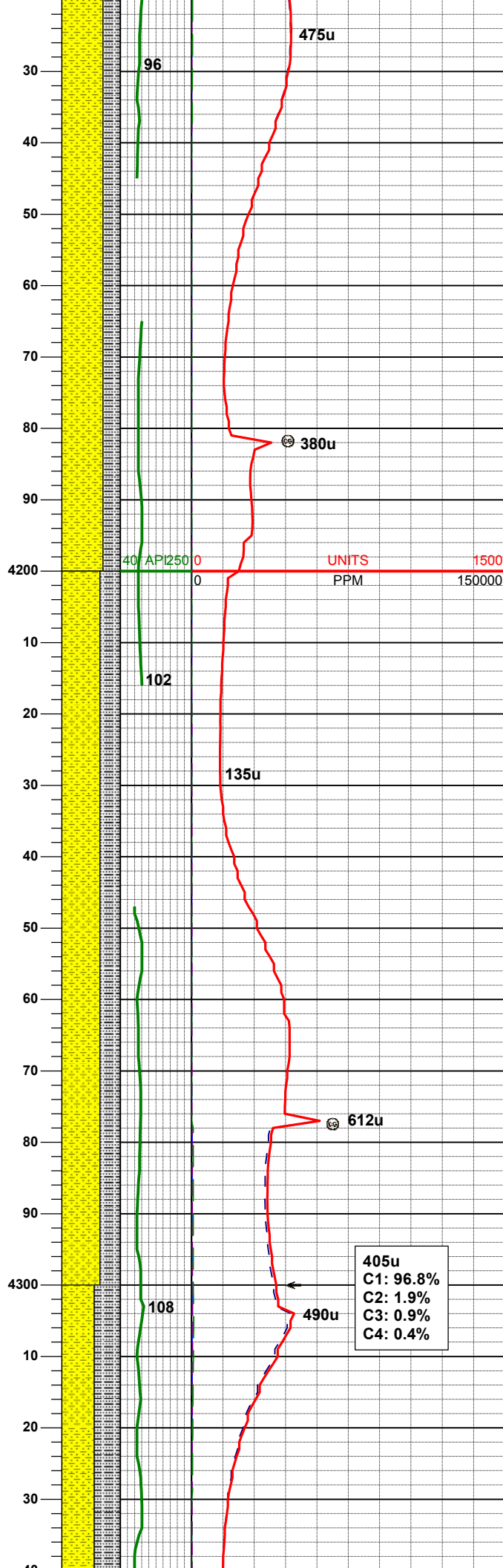
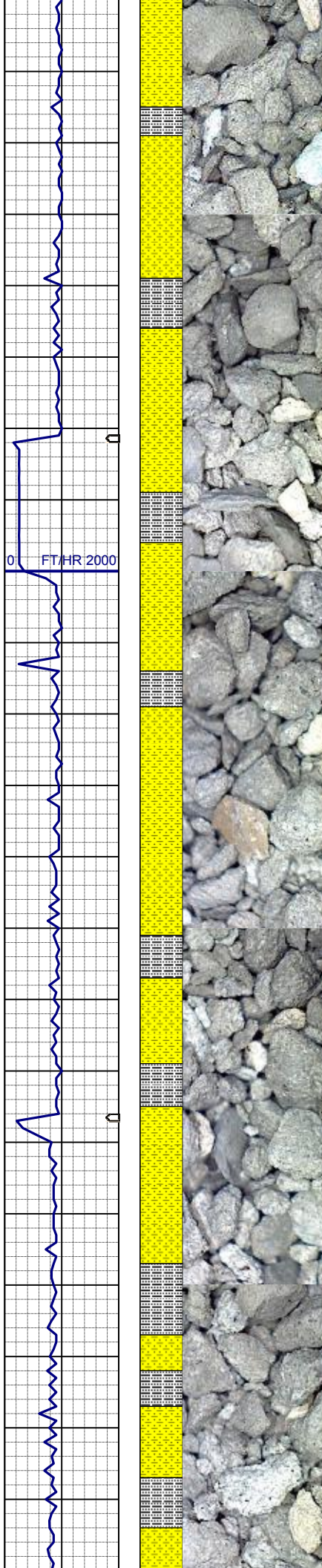
MD 3926'
INC 6.9°
AZM 24.4°
TVD 3886.41'

SHYSS: ltgy-gy, sbang, v fri, vfgr,
modsr, wrn, abnt cly, arg cmt
SS: ltgy-trns, s&p ip, sbang-ang, v fri,
fgr, v psrt, prn, mod por, arg cmt,
abnt glau, abnt dk lith frag, uncons
SLTYSH: ltgy-gy, sbblky-sbply, v sft,
gt-sdy tex, arg cmt

MD 4021'
INC 6.2°
AZM 25.7°
TVD 3980.79'

SHYSS: ltgy-gy, sbang, v fri, vfgr,
modsr, wrn, abnt cly, arg cmt
SLTYSH: ltgy-gy, sbblky-sbply, v sft,
gt-sdy tex, arg cmt

MD 4115'
INC 4.8°
AZM 17.0°
TVD 4074.36'



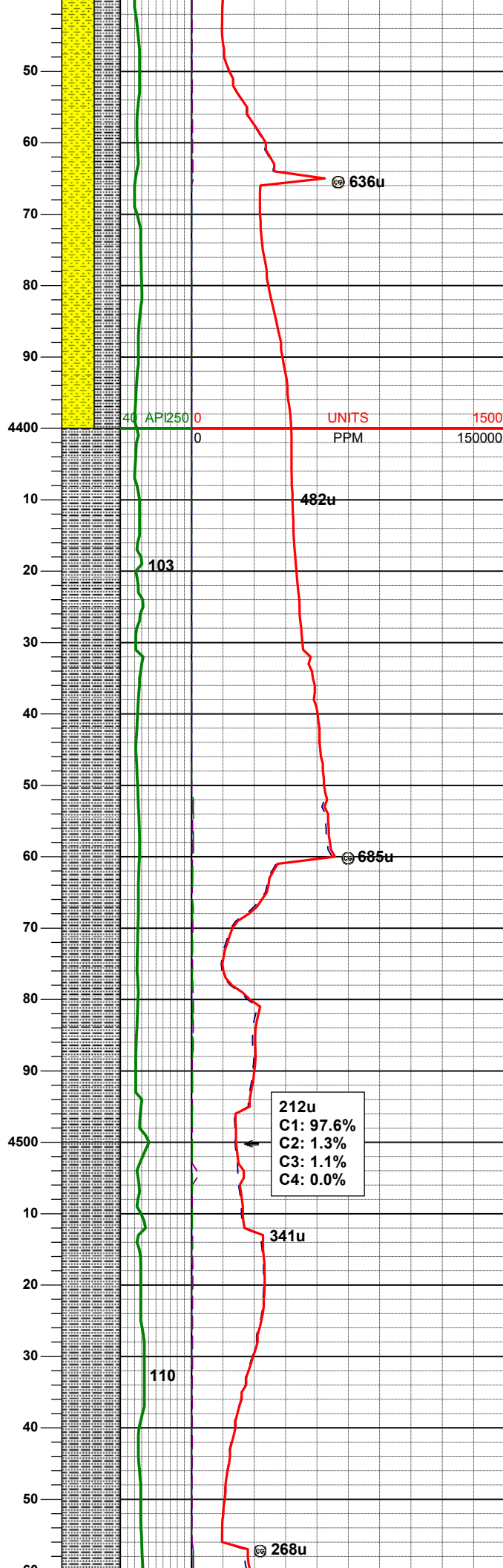
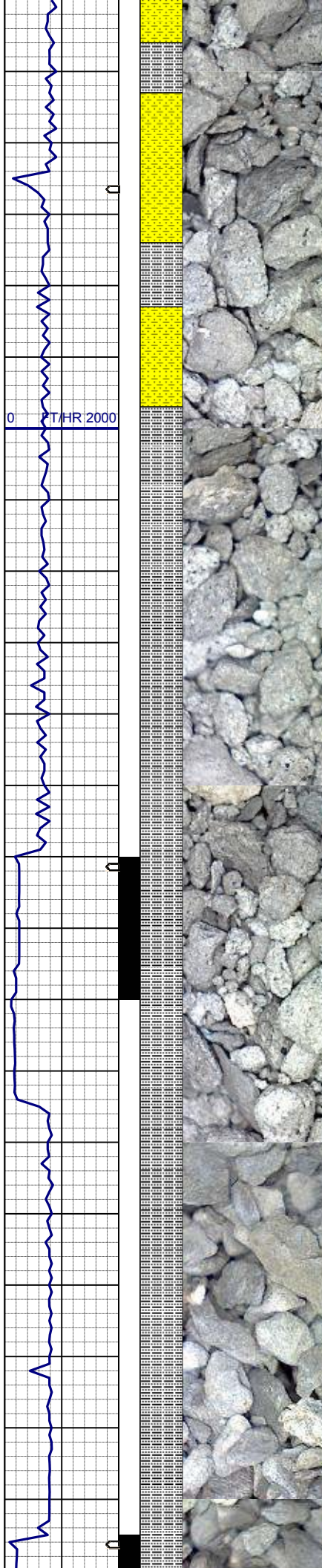
SHYSS: ltgy-gy, sbang, v fri, vfgr,
modsr, wrdd, abnt cly, arg cmt
SLTYSH: ltgy-gy, sbblky-sbply, v sft,
gt-sdy tex, arg cmt

MD	4210'
INC	1.8°
AZM	16.7°
TVD	4169.19'

SHYSS: ltgy-gy, sbang, v fri, vfgr,
modsr, wrdd, abnt cly, arg cmt
SLTYSH: ltgy-gy, sbblky-sbply, v sft,
gt-sdy tex, arg cmt

MD	4305'
INC	1.8°
AZM	17.6°
TVD	4264.14'

405u
C1: 96.8%
C2: 1.9%
C3: 0.9%
C4: 0.4%



SHYSS: ltgy-gy, sbang, v fri, vfgr,
modsr, wrdd, abnt cly, arg cmt
SLTYSH: ltgy-gy, sbblky-sbply, v sft -
sft, gt-sdy tex, arg cmt

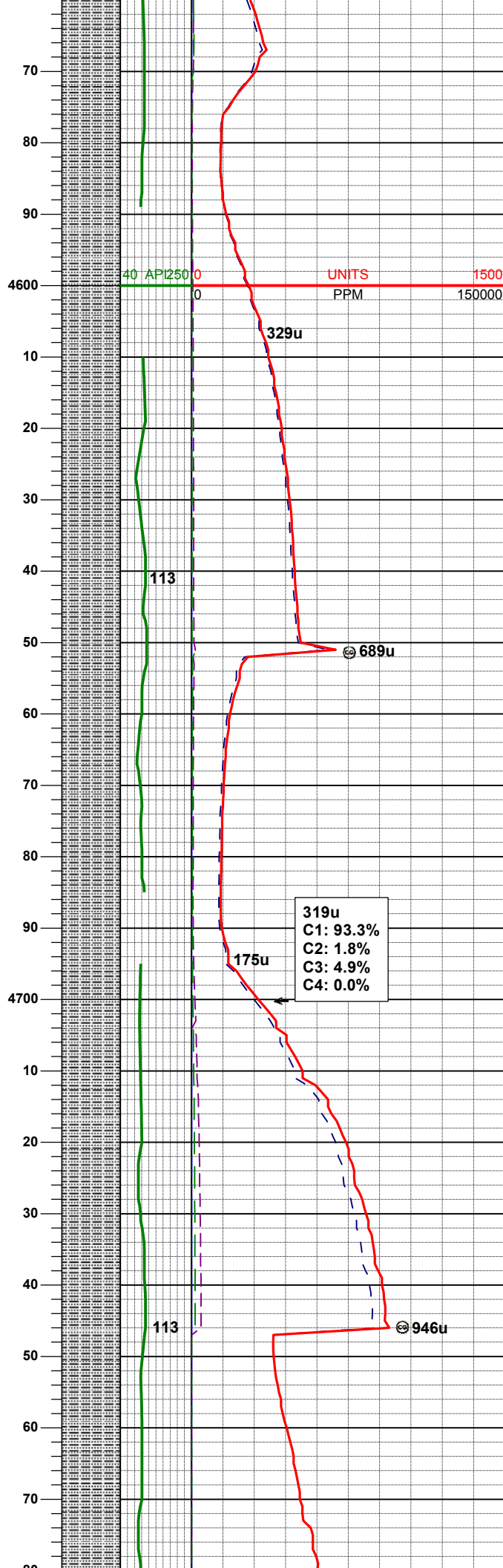
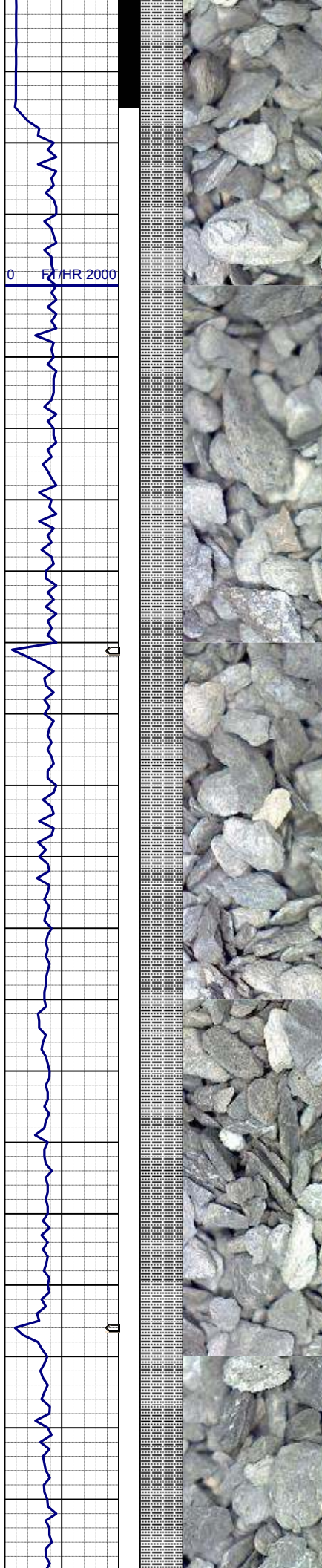
MD	4400'
INC	1.8°
AZM	8.6°
TVD	4395.10'

SLTYSH: ltgy-gy, sbblky-sbply, v sft -
sft, gt-sdy tex, arg cmt

WT IN 9.00/ OUT 9.00
VIS IN 35/ OUT 35

MD	4495'
INC	3.2°
AZM	340.3°
TVD	4454.01'

SLTYSH: ltgy-gy, sbblky-sbply, v sft -
sft, gt-sdy tex, arg cmt



MD	4590'
INC	1.8°
AZM	298.3°
TVD	4548.92'

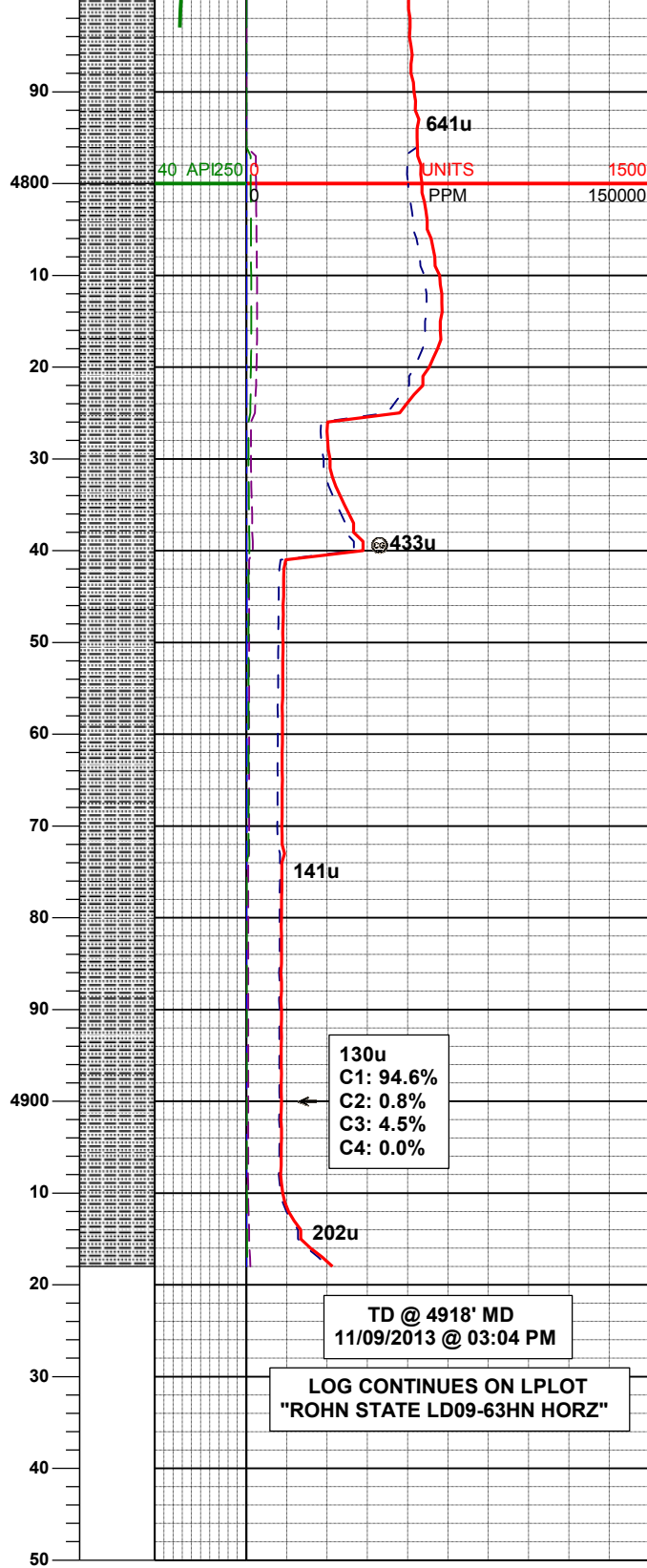
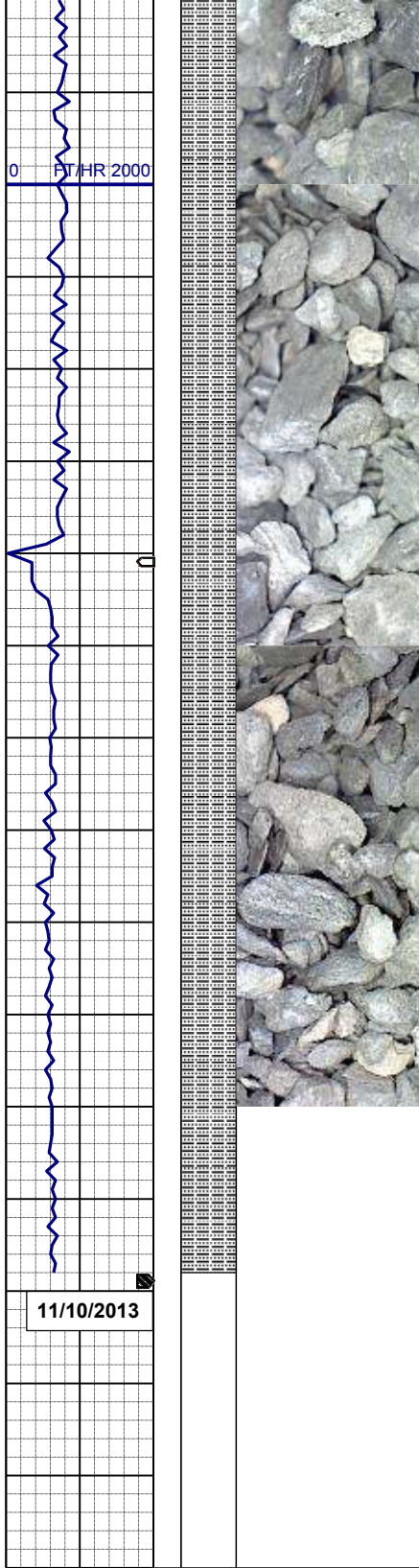
SLTYSH: ltgy-gy, lt blk-blk, sbblky-sbplty, v sft - mod firm, gt-sdy tex, arg cmt

MD	4685'
INC	1.2°
AZM	317.5°
TVD	4643.89'

WT IN 9.10+/- OUT 9.10+
VIS IN 36/ OUT 36

SLTYSH: ltgy-gy, lt blk-blk, sbblky-sbplty, v sft - mod firm, gt-sdy tex, arg cmt

MD	4780'
INC	0.5°



AZM 292.0°
TVD 4738.88'

SLTYSH: ltgy-gy, lt blk, sbblky-sbplty,
v sft - mod firm, gt-sdy tex, arg cmt

WT IN 9.20+/- OUT 9.20+
VIS IN 36/ OUT 36

130u
C1: 94.6%
C2: 0.8%
C3: 4.5%
C4: 0.0%

TD @ 4918' MD
11/09/2013 @ 03:04 PM

LOG CONTINUES ON L PLOT
"ROHN STATE LD09-63HN HORZ"