

Rohn State LD09-69HN

TVD
2":100'

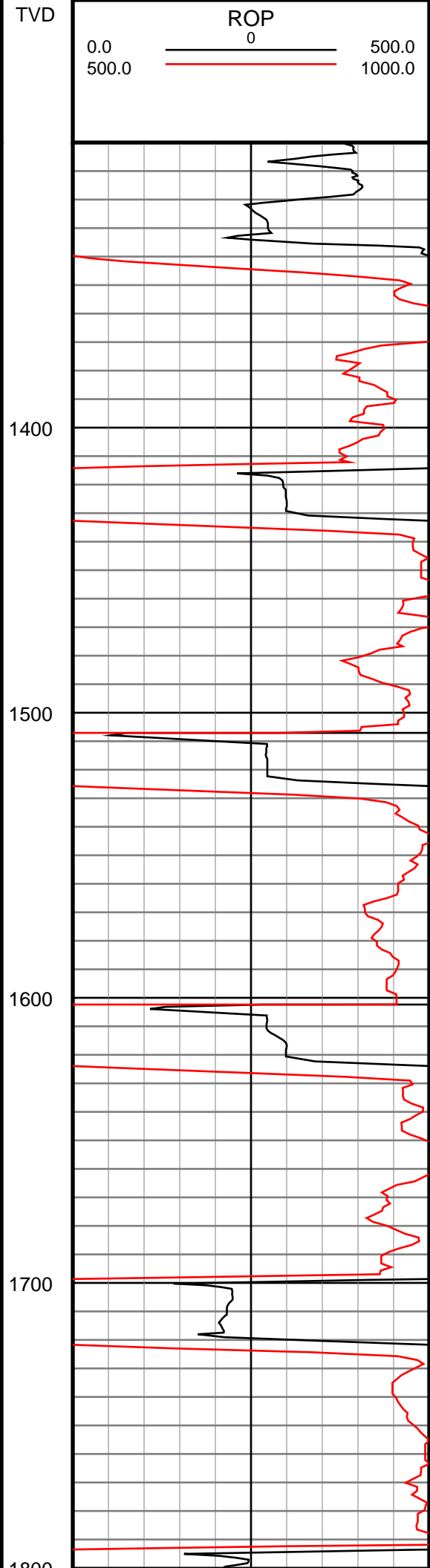
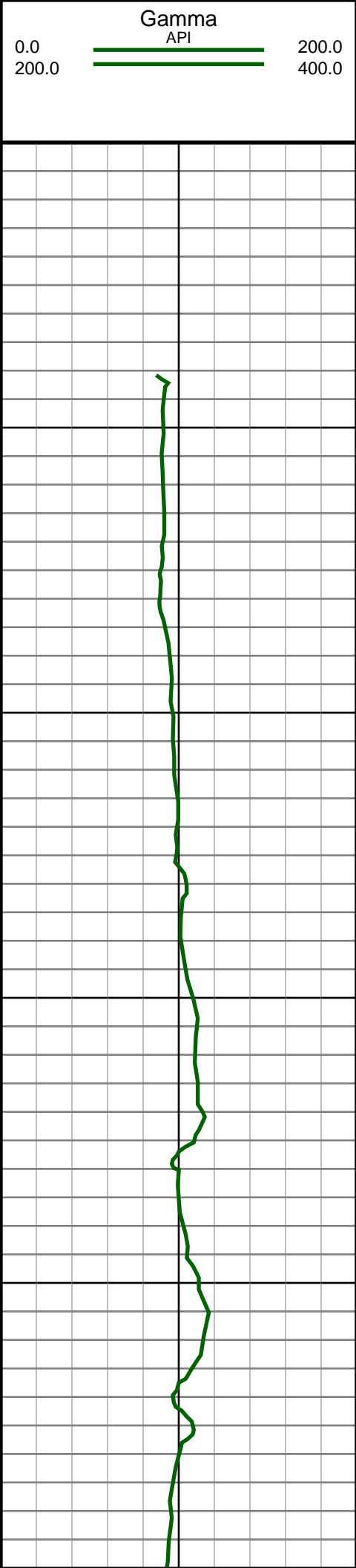
Company: Noble Energy Inc
Well Name: Rohn State LD09-69HN
UWI or LSD: 05-123-37472
Rig Id: H&P 273
State: Colorado
County/Parish: Weld
Country: USA
Survey Company: Ensign Directional
Job number: 139452
Dir. Driller Days Kody Wood
Dir. Driller Nights Mike David
MWD/LWD Days Nathan McClain
MWD/LWD Nights Ryan Prue

Log measurements:
Depth measured from:
Maximum temperature:

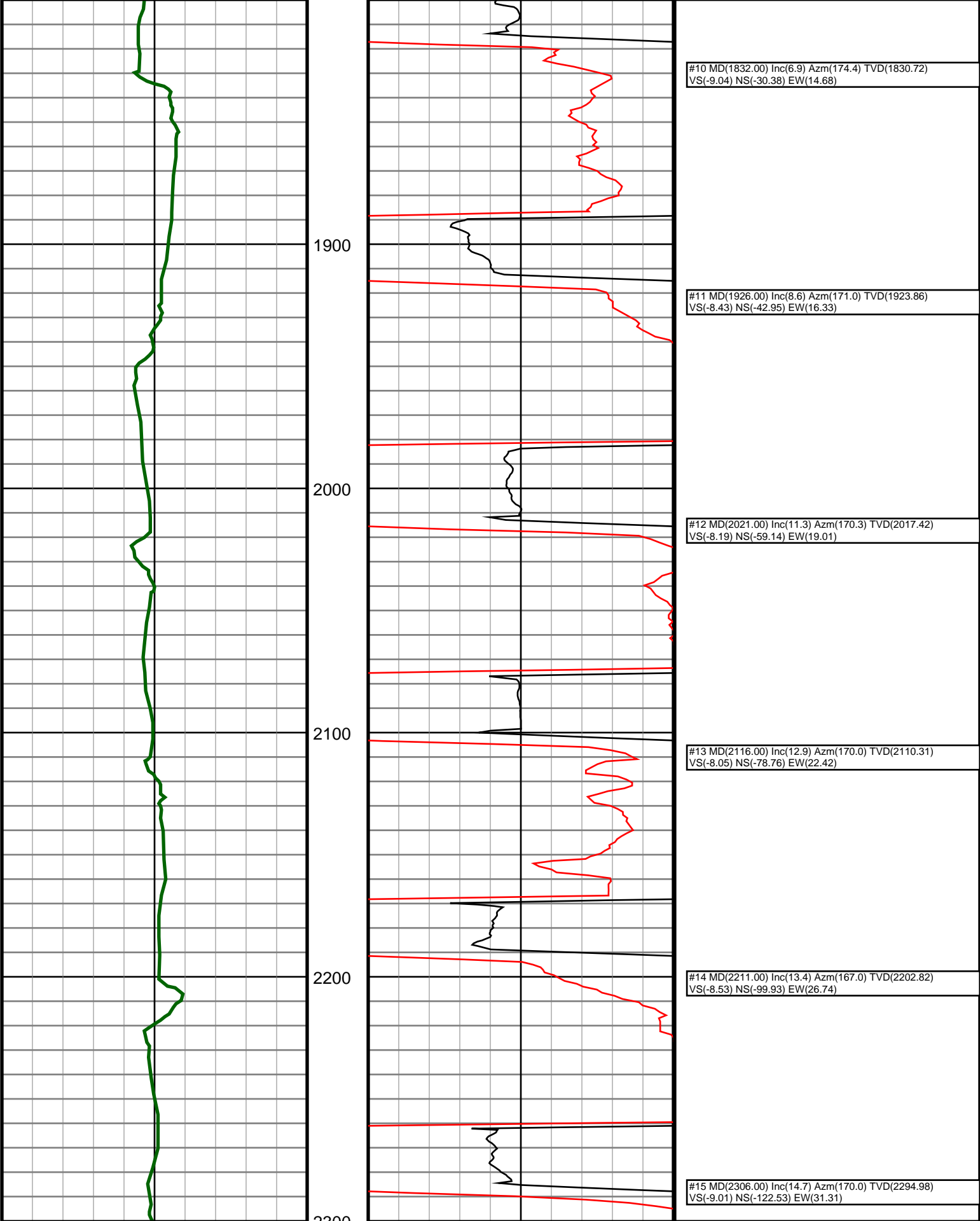
Depth **Date**
Start: 1249 ft 9/24/2013
End: 9710 ft 9/29/2013

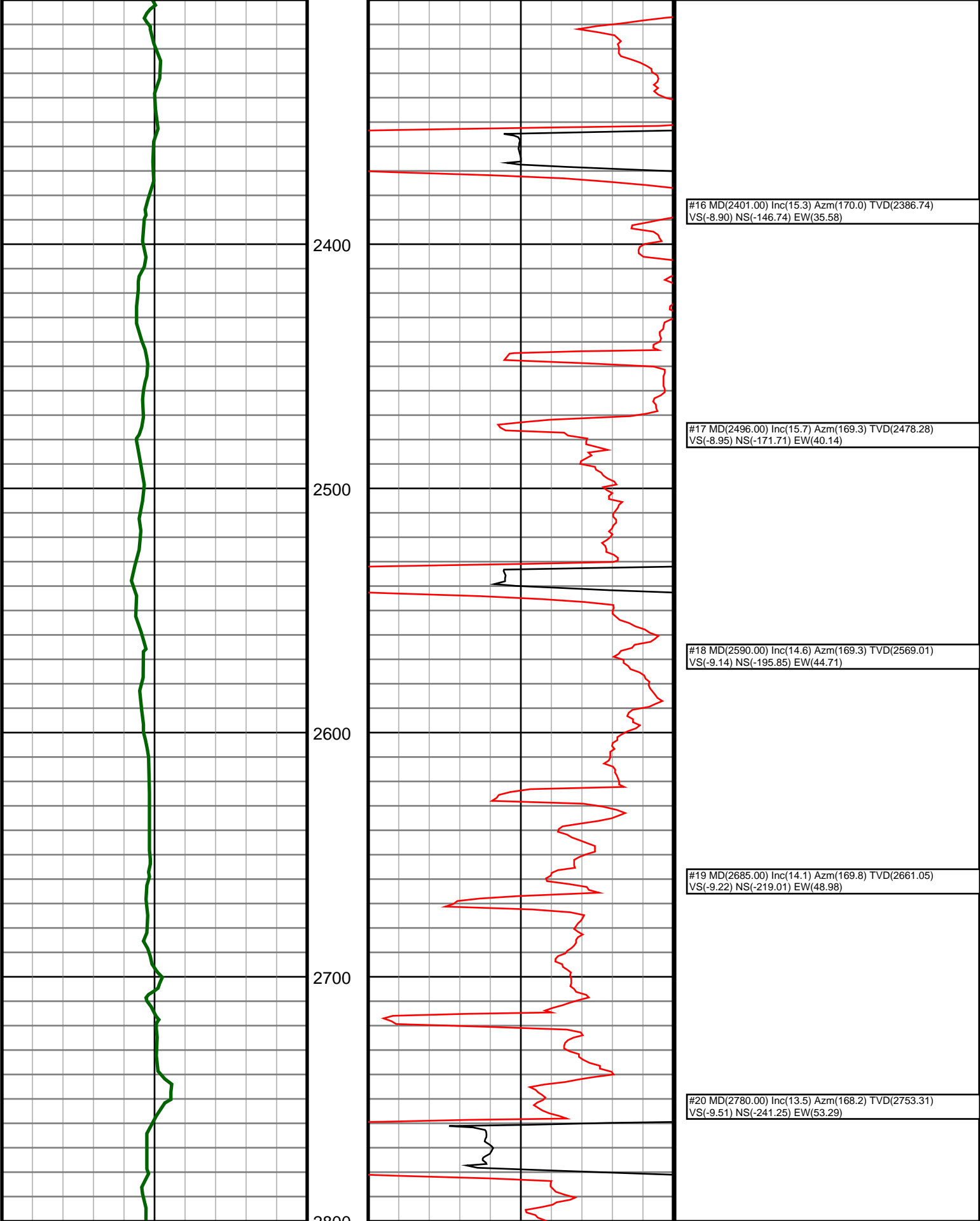
Casing	Depth	Size	Mud Type:	Elevations
Surface:	1249	9.625	Density:	KB: 4736
Intermediate:			Viscosity:	GL: 4712
			Rm:	DF: 4736
			Rmf:	
			Rmc:	

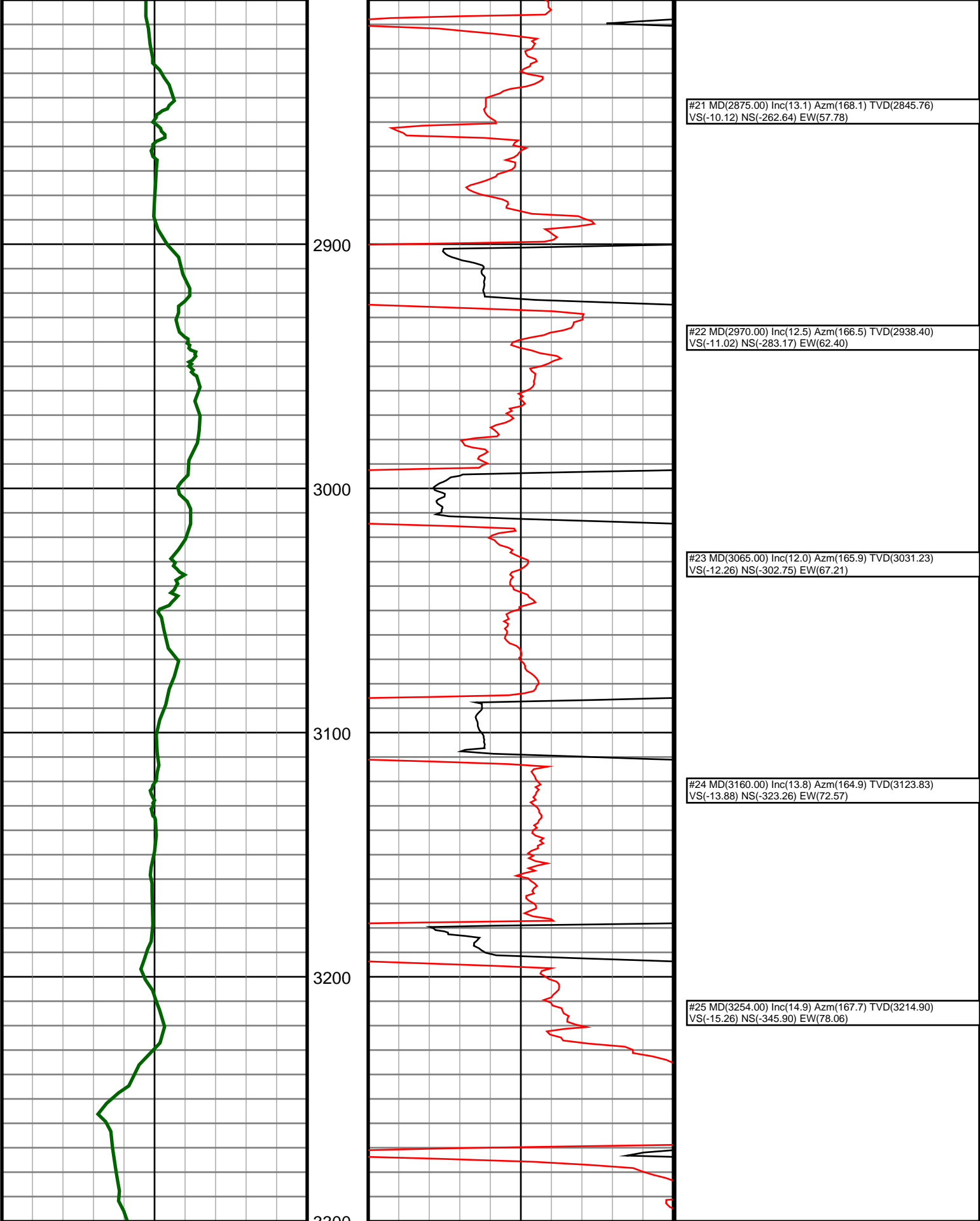
Run	Bit Size	Offsets	Gamma	Survey	Start	Depths	End	Start	Dates	End
1	8.75	57.31	52.31		1249	5039		9/24/2013		9/24/2013
2	8.75	61.94	56.94		5039	6178		9/24/2013		9/25/2013
3	6.125	75.60	70.60		6178	6324		9/26/2013		9/26/2013
4	6.125	57.48	70.48		6324	9029		9/27/2013		9/28/2013
5	6.125	71.79	66.79		9029	9710		9/28/2013		9/29/2013
6										
7										
8										
9										
10										

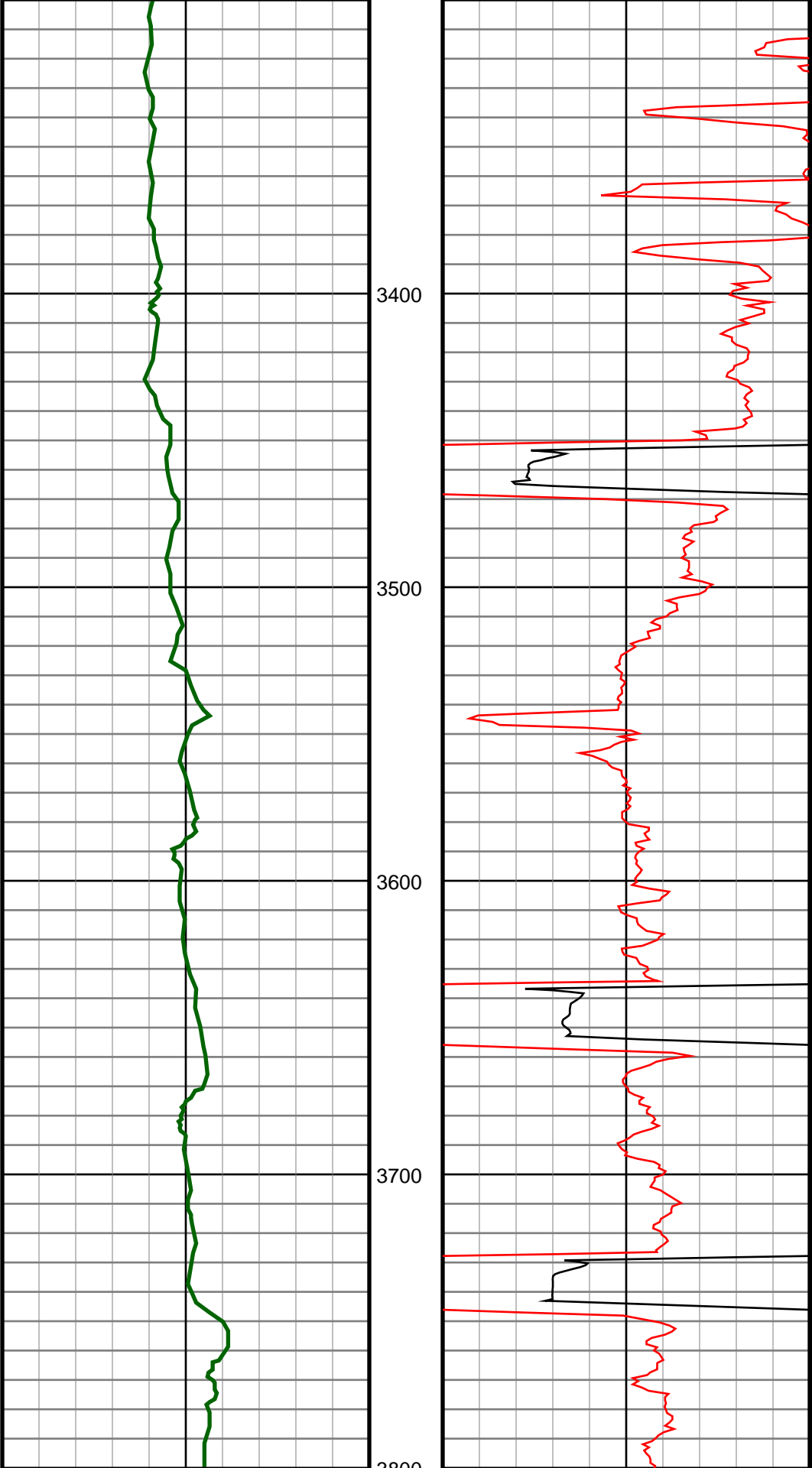


#5 MD(1357.00) Inc(1.0) Azm(185.8) TVD(1356.95) VS(-8.40) NS(0.92) EW(8.37)
#6 MD(1452.00) Inc(2.9) Azm(165.8) TVD(1451.89) VS(-8.34) NS(-2.24) EW(8.88)
#7 MD(1547.00) Inc(4.0) Azm(155.6) TVD(1546.72) VS(-9.31) NS(-7.59) EW(10.84)
#8 MD(1642.00) Inc(3.5) Azm(169.1) TVD(1641.52) VS(-10.16) NS(-13.45) EW(12.75)
#9 MD(1737.00) Inc(5.1) Azm(174.4) TVD(1736.25) VS(-9.85) NS(-20.50) EW(13.71)









#26 MD(3349.00) Inc(15.2) Azm(168.9) TVD(3306.64)
VS(-15.89) NS(-370.05) EW(83.06)

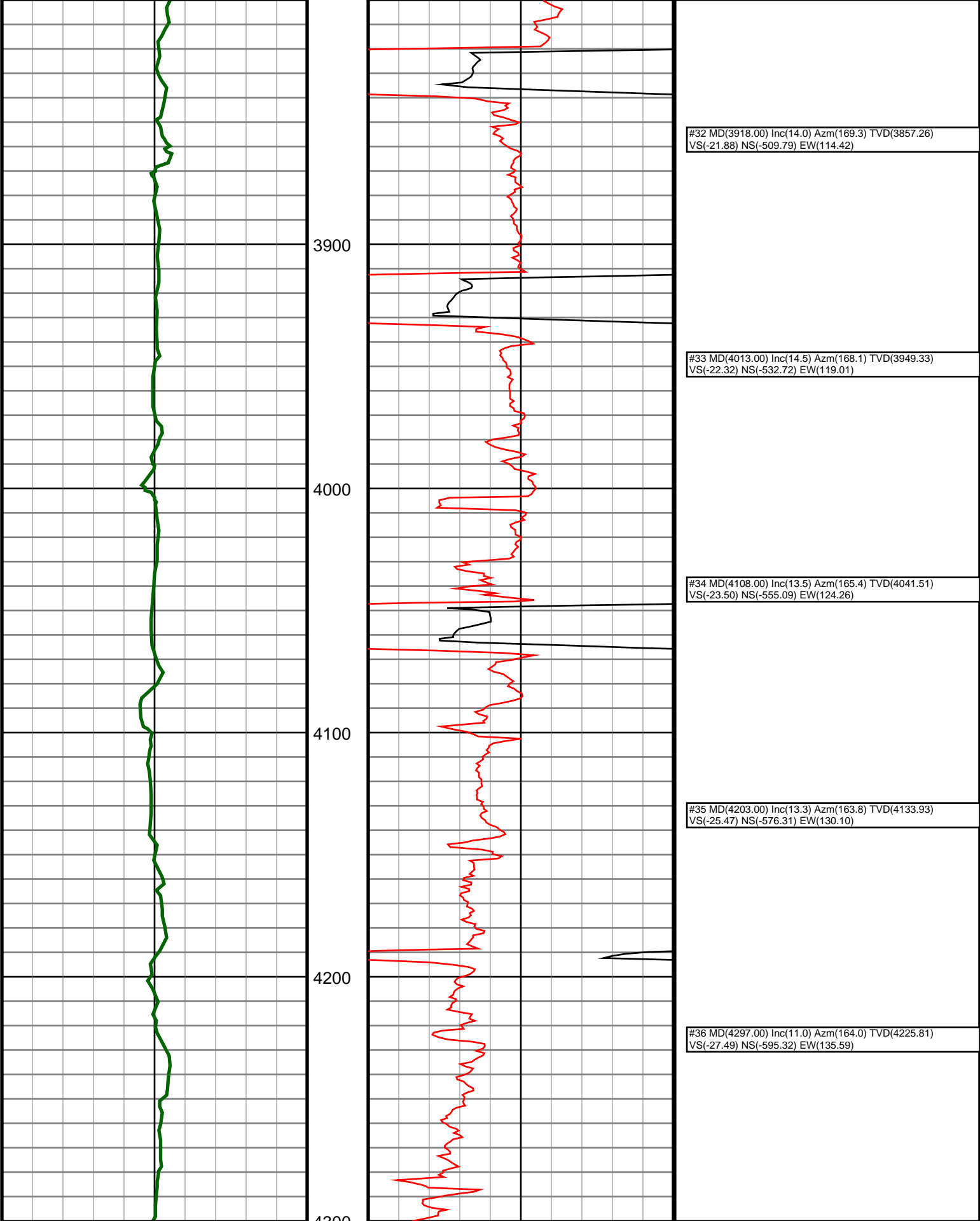
#27 MD(3444.00) Inc(16.0) Azm(168.1) TVD(3398.14)
VS(-16.45) NS(-395.08) EW(88.16)

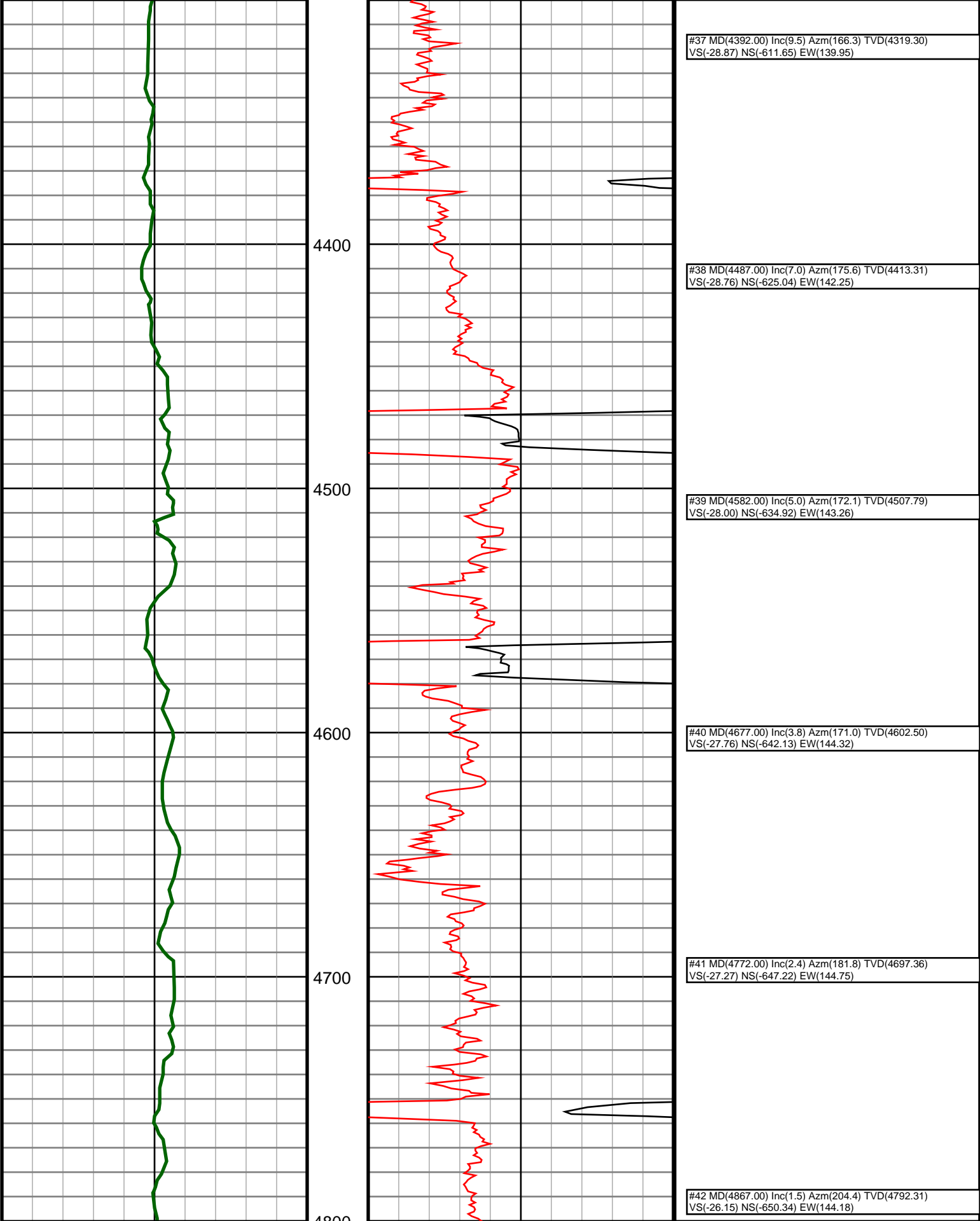
#28 MD(3539.00) Inc(15.2) Azm(165.4) TVD(3489.64)
VS(-17.77) NS(-419.95) EW(94.00)

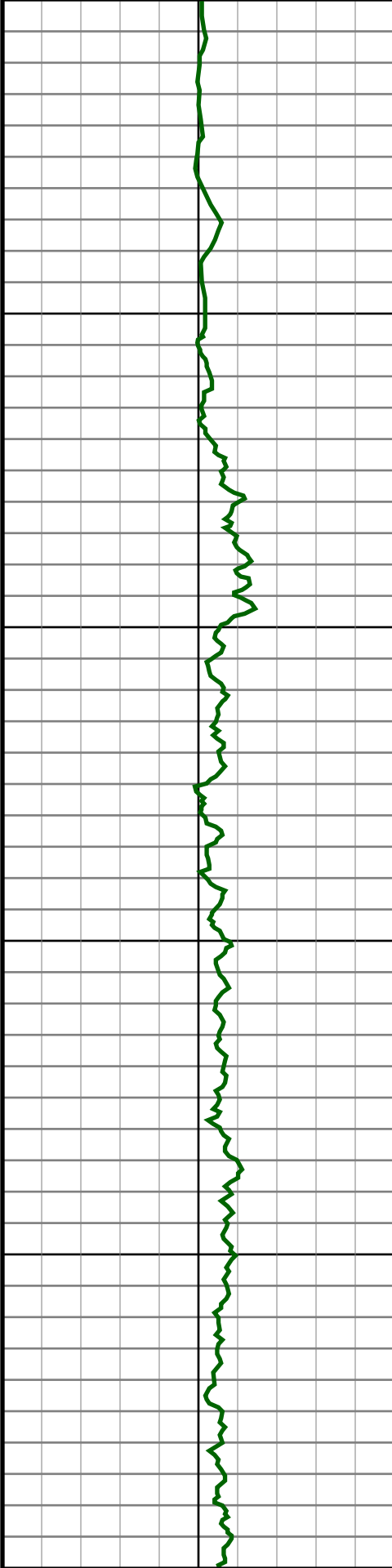
#29 MD(3634.00) Inc(14.0) Azm(165.2) TVD(3581.57)
VS(-19.63) NS(-443.11) EW(100.07)

#30 MD(3728.00) Inc(13.8) Azm(167.9) TVD(3672.82)
VS(-20.89) NS(-465.07) EW(105.33)

#31 MD(3823.00) Inc(13.9) Azm(168.4) TVD(3765.06)
VS(-21.52) NS(-487.32) EW(110.00)







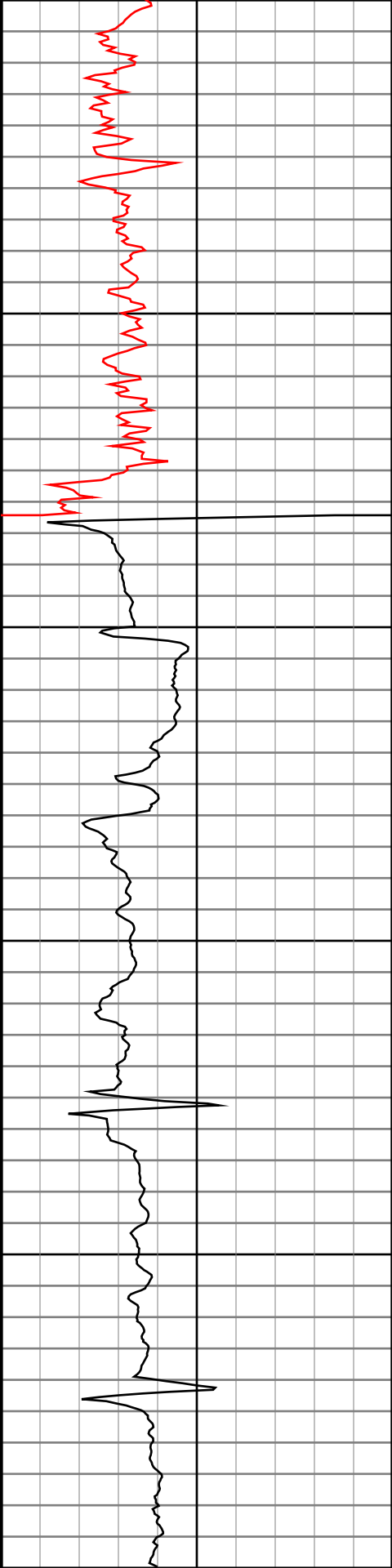
4900

5000

5100

5200

5300



#43 MD(4961.00) Inc(0.9) Azm(206.9) TVD(4886.29)
VS(-25.01) NS(-652.12) EW(143.33)

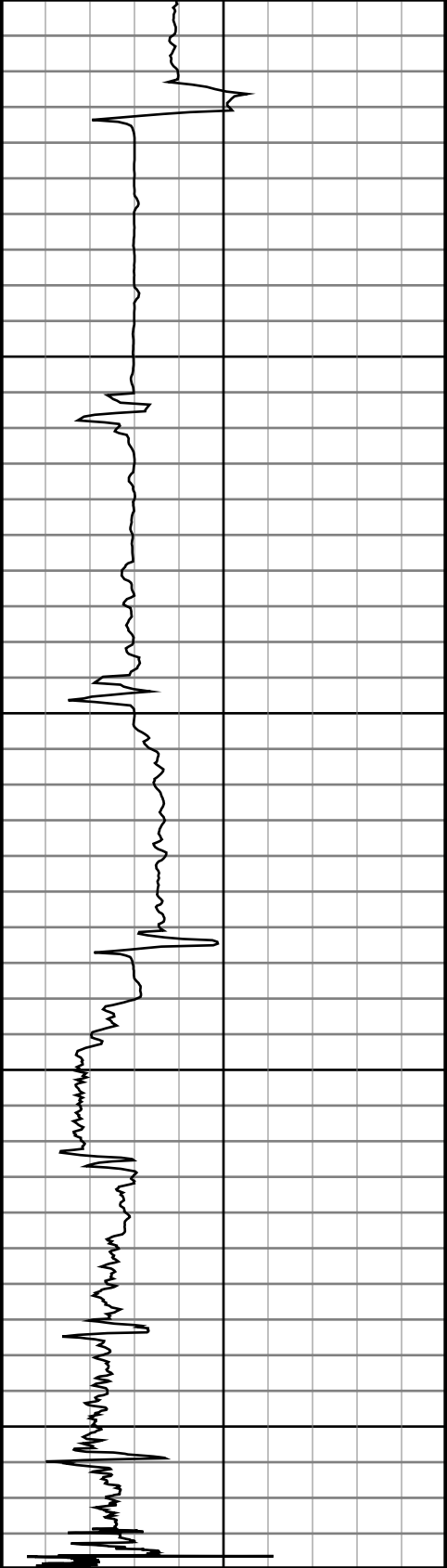
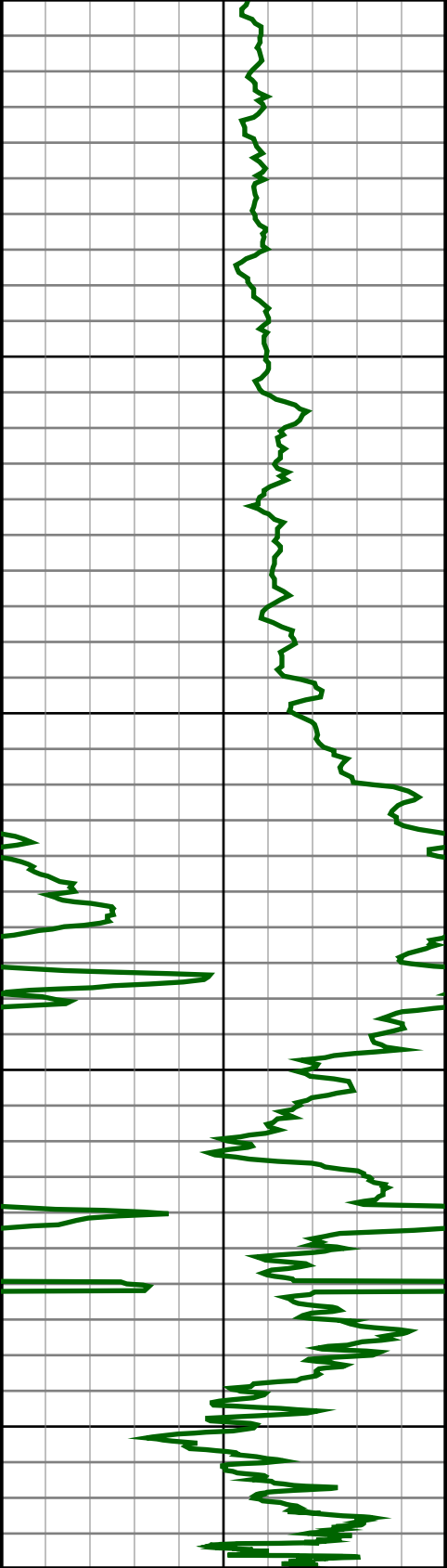
#44 MD(4980.00) Inc(0.8) Azm(225.0) TVD(4905.29)
VS(-24.81) NS(-652.35) EW(143.17)

#45 MD(5075.00) Inc(4.3) Azm(280.2) TVD(5000.18)
VS(-20.92) NS(-652.19) EW(139.20)

#46 MD(5169.00) Inc(8.3) Azm(282.8) TVD(5093.60)
VS(-11.37) NS(-650.06) EW(129.11)

#47 MD(5264.00) Inc(16.4) Azm(281.6) TVD(5186.32)
VS(7.41) NS(-645.84) EW(109.25)

#48 MD(5359.00) Inc(22.3) Azm(281.6) TVD(5275.92)
VS(36.62) NS(-639.51) EW(78.43)



#49 MD(5454.00) Inc(27.1) Azm(273.7) TVD(5362.22)
VS(74.38) NS(-634.49) EW(39.15)

#50 MD(5549.00) Inc(33.1) Azm(266.3) TVD(5444.40)
VS(121.21) NS(-634.76) EW(-8.39)

#51 MD(5644.00) Inc(40.3) Azm(266.5) TVD(5520.52)
VS(177.56) NS(-638.32) EW(-65.02)

#52 MD(5738.00) Inc(49.2) Azm(265.4) TVD(5587.21)
VS(243.29) NS(-643.04) EW(-130.96)

#53 MD(5833.00) Inc(58.4) Azm(267.0) TVD(5643.26)
VS(319.37) NS(-648.05) EW(-207.37)

#54 MD(5928.00) Inc(66.6) Azm(266.3) TVD(5687.09)
VS(402.96) NS(-652.99) EW(-291.42)

#55 MD(6023.00) Inc(75.8) Azm(267.4) TVD(5717.67)
VS(492.10) NS(-657.90) EW(-381.11)

6215.0:Gama logged through 7" casing from 6191 to 6248

#58 MD(6256.00) Inc(87.4) Azm(270.5) TVD(5739.85)
VS(788.88) NS(-668.88) EW(-545.58)

Gamma
API
0.0 200.0 400.0

ROP
0 500.0 1000.0