

**RADIAL CEMENT BOND
GAMMA RAY
CCL**

Company KERR MCGEE OIL AND GAS
Well GORDON TURKEY FARMS D1
Field WATTENBERG
County WELD State CO

Location: API # : 05-123-09586
E / CN Other Services

SEC 15 TWP 2N RGE 67W

Permanent Datum GL Elevation 4964'
Log Measured From KB 13'
Drilling Measured From KB

Elevation
K.B. 4977'
D.F. 4976'
G.L. 4964'

Date 12-27-13

Run Number 1
Depth Driller 8112'
Depth Logger 4860'
Bottom Logged Interval 4857'
Top Log Interval 4130'
Open Hole Size 7.875'
Type Fluid WATER
Density / Viscosity 1.0
Max. Recorded Temp. 150
Estimated Cement Top 4476'
Time Well Ready N/A
Time Logger on Bottom N/A
Equipment Number 4310
Location GREELEY
Recorded By N. BREHMER
Witnessed By J. CHANDLER

Borehole Record
Run Number Bit From To Size Weight From To
ONE
TWO

Casing Record
Surface String Size 8.63 Wgt/Ft 24# Top 0 Bottom 559
Prot. String
Production String 4.5 11.6 0 7974
Liner

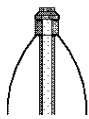
<<< Fold Here >>>

All interpretations are opinions based on inferences from electrical or other measurements and we cannot and do not guarantee the accuracy or correctness of any interpretation, and we shall not, except in the case of gross or willful negligence on our part, be liable or responsible for any loss, costs, damages, or expenses incurred or sustained by anyone resulting from any interpretation made by any of our officers, agents or employees. These interpretations are also subject to our general terms and conditions set out in our current Price Schedule.



Comments

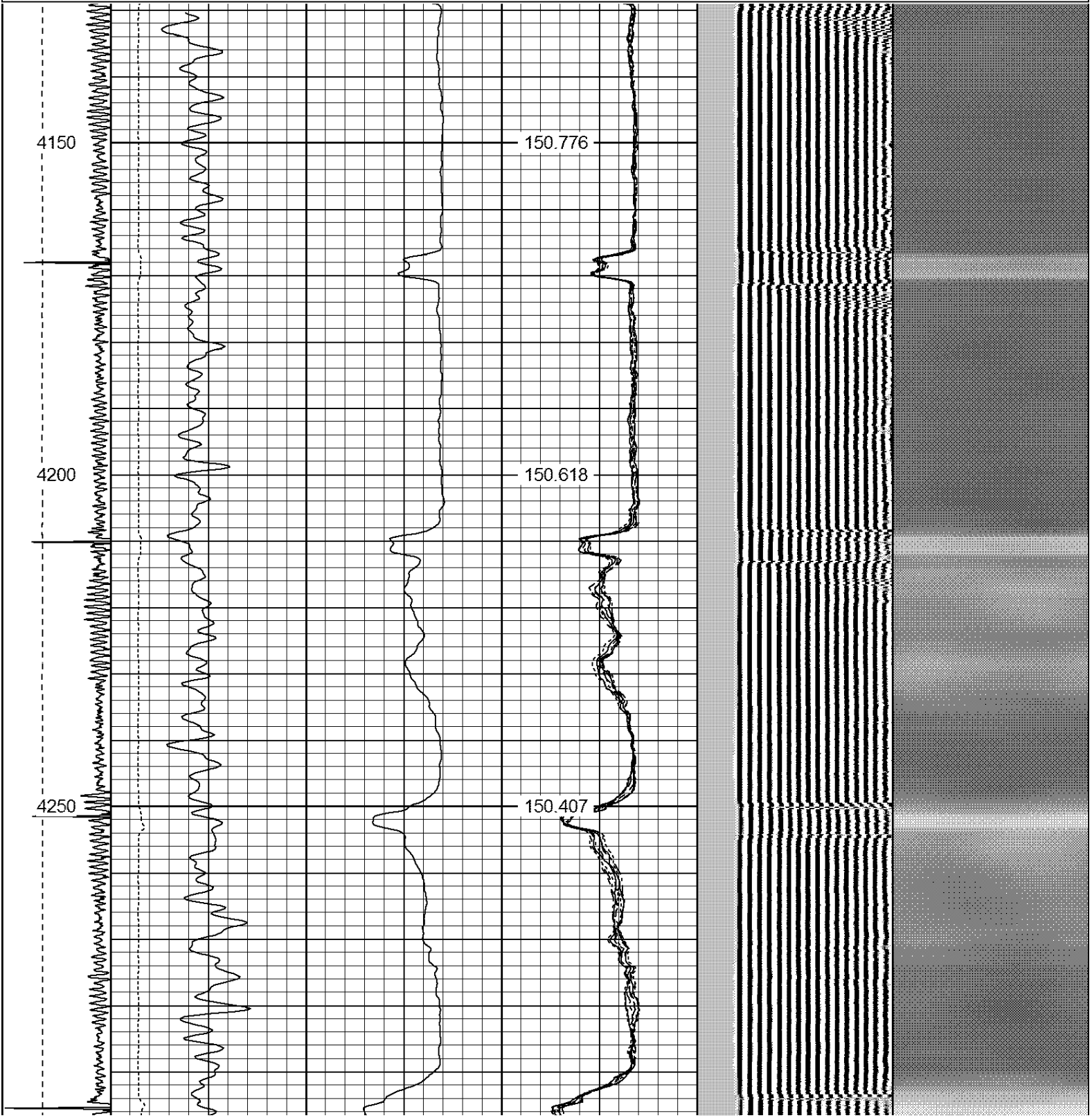
TAGGED CEMENT RETAINER @4860'
RAN CBL TO VERIFY CEMENT BOND

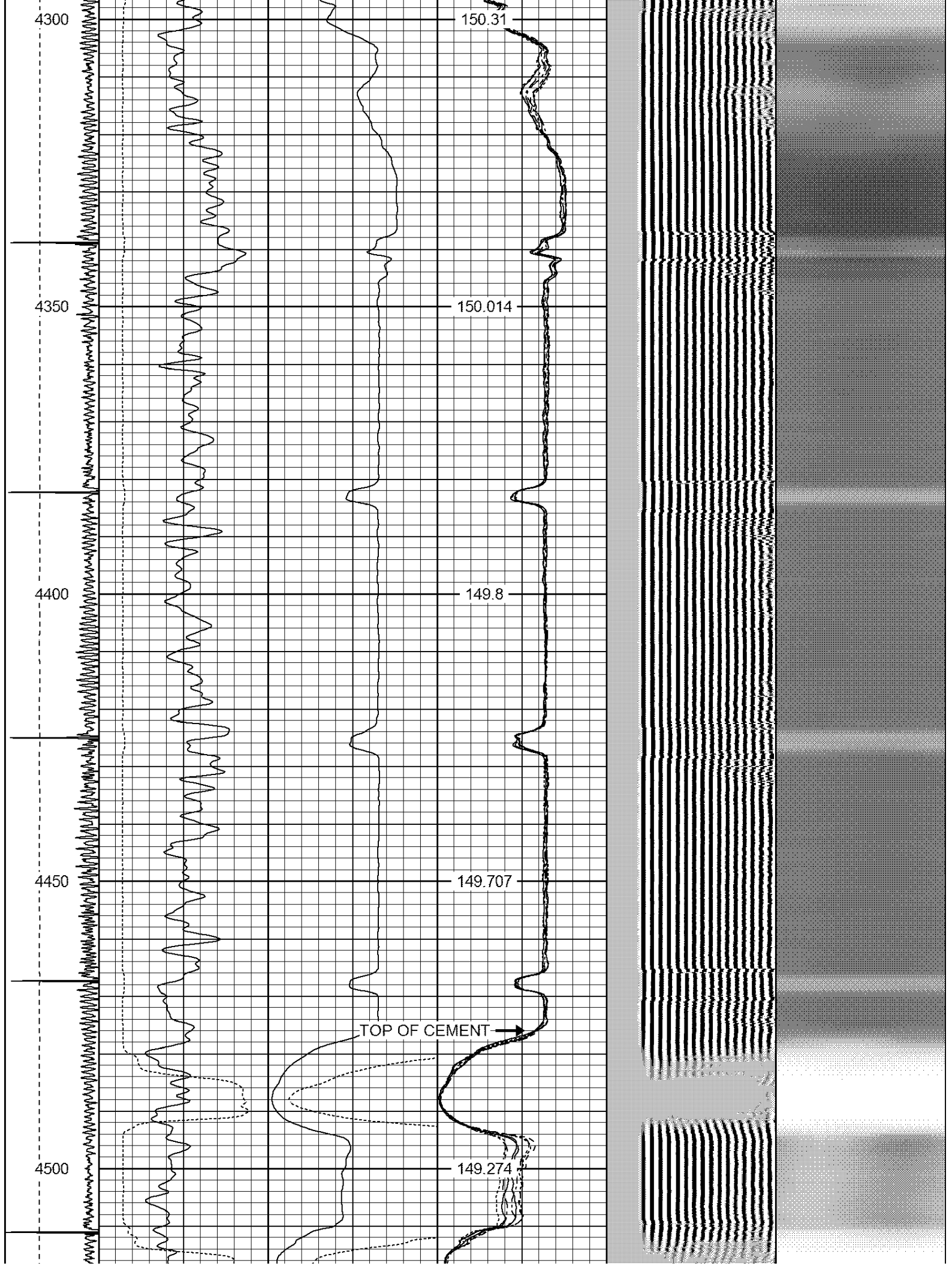
THANK YOU FOR USING WARRIOR !!!!!!!

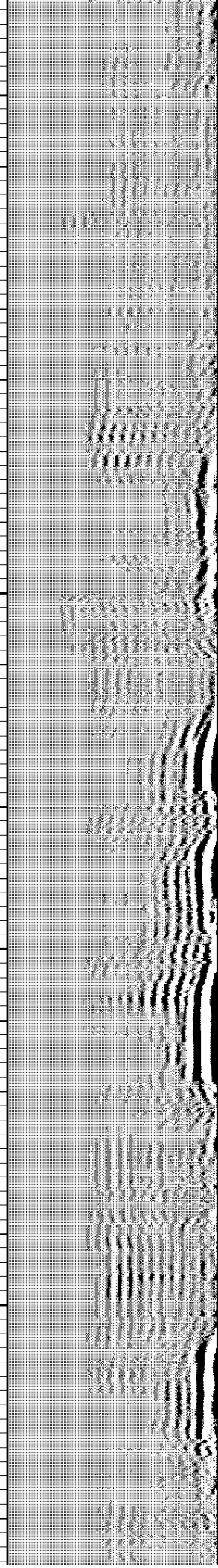
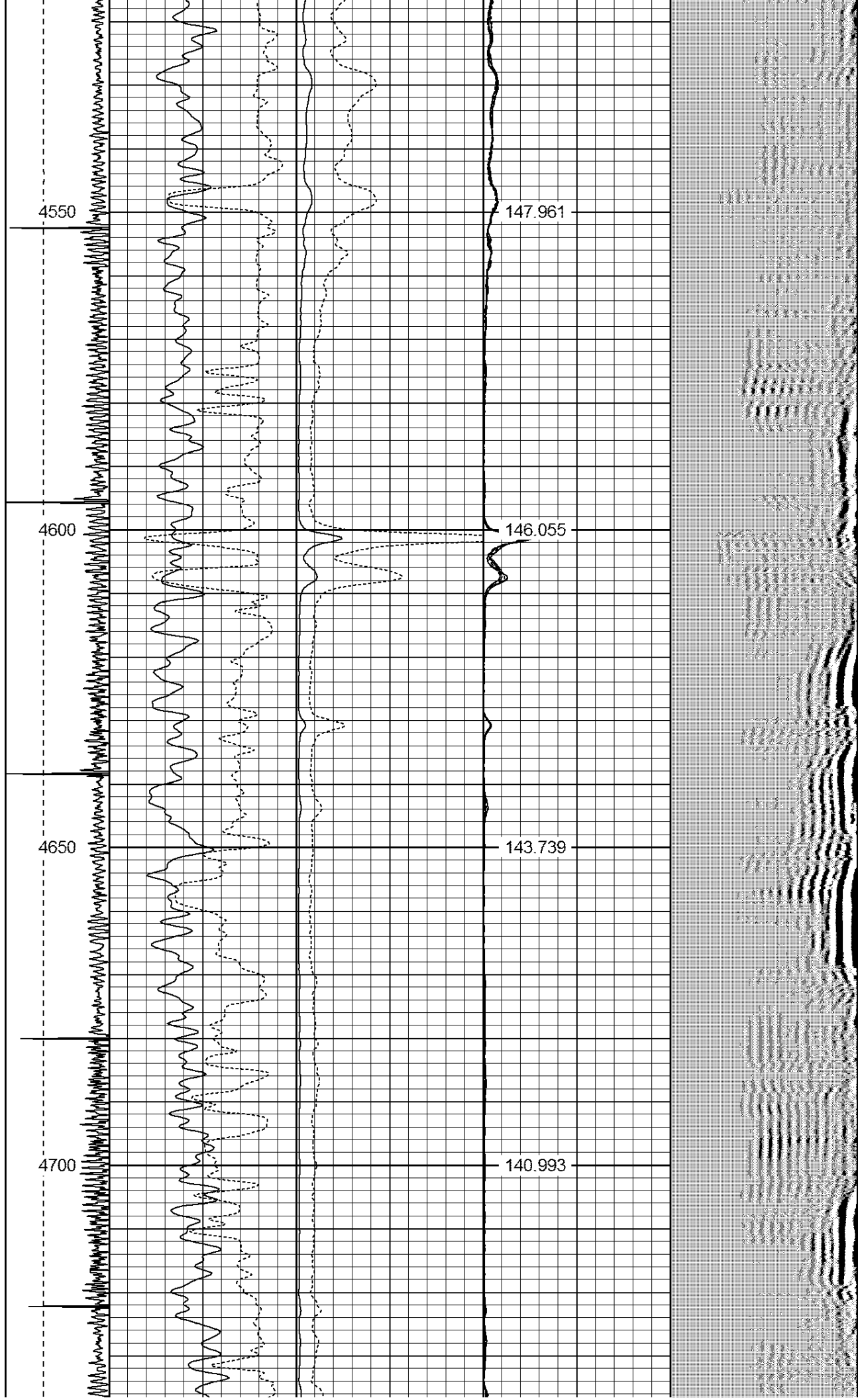
Sensor	Offset (ft)	Schematic	Description	Len (ft)	OD (in)	Wt (lb)
						

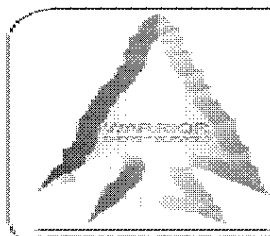
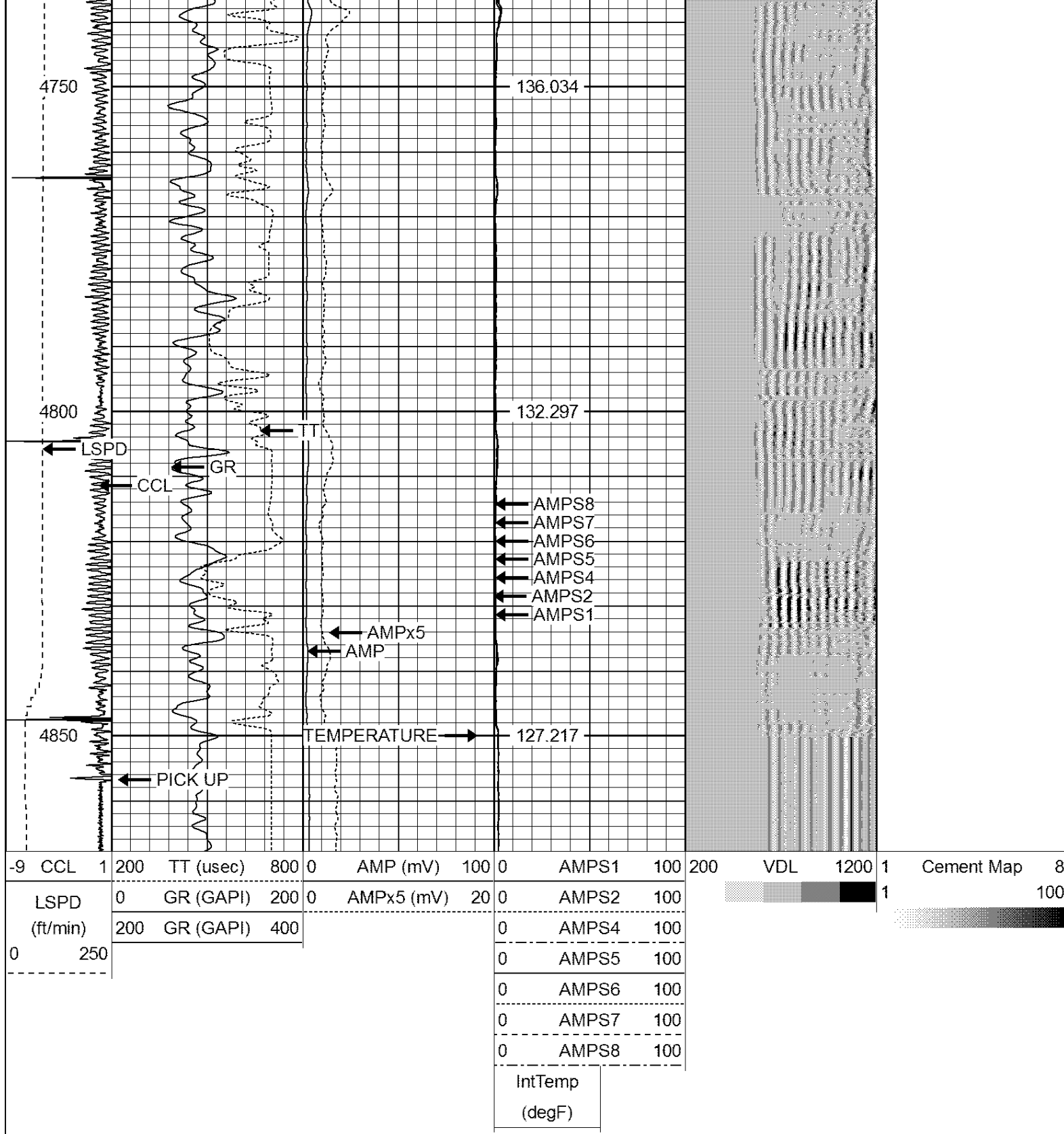
			PTS275	2.83	2.75	
HEADVOLT	16.13					
IntTemp	14.71					
WVF3FT	11.46		RBT-Probe (Base)	8.92	2.75	90.00
WVFCAL	11.46		Probe Radii Bond Tool with Digital Telemetry			
WVFS1	11.46					
WVFS2	11.46					
WVFS3	11.46					
WVFS4	11.46					
WVFS5	11.46					
WVFS6	11.46					
WVFS7	11.46					
WVFS8	11.46					
WVF5FT	10.46					
CNLSC	6.00		CNT-Probe_B (275)	2.88	2.75	40.00
CNSSC	5.17		6 bow centralizer			
CCL	3.64					
			GR-Probe (275)	4.33	2.75	30.00
			Probe 2.75"			
GR	0.90					
Dataset: gordon turkey farms d1.db: field/well/run1/pass3 Total Length: 18.96 ft Total Weight: 160.00 lb O.D. 2.75 in						

Dataset Creation: Fri Dec 27 07:25:28 2013 by Log 7.0 B1																																	
Charted by: Depth in Feet scaled 1:240																																	
-9	CCL	1	200	TT (usec)	800	0	AMP (mV)	100	0	AMPS1	100	200	VDL	1200	1	Cement Map	8																
LSPD (ft/min)	0		0	GR (GAPI)	200	0	AMPx5 (mV)	20	0	AMPS2	100			1				100															
	200		200	GR (GAPI)	400				0	AMPS4	100																						
0	250								0	AMPS5	100																						
										0	AMPS6	100																					
										0	AMPS7	100																					
										0	AMPS8	100																					
										IntTemp																							
										(degF)																							









WARRIOR
ENERGY SERVICES

Company KERR McGEE OIL AND GAS
Well GORDON TURKEY FARMS D1
Field WATTENBERG
County WELD
State CO