

RADIAL CEMENT BOND LOG
GAMMA RAY
CCL

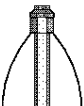
Company		Kerr McGee Oil and Gas	
Well		Helgoth Heirs UT#1	
Field		Wattenberg	
County		Weld	
State		CO	
Location:		API # : 05-123-10041 SW SW SW	
Other Services			
SEC 24		TWP 2N	
RGE 66W			
Permanent Datum		GL	
Log Measured From		KB 10	
Drilling Measured From		KB	
Elevation		5092	
K.B. 5102			
D.F. 5101			
G.L. 5092			
Date		11-12-2013	
Run Number		ONE	
Depth Driller		8105	
Depth Logger		6340	
Bottom Logged Interval		6340	
Top Log Interval		SURFACE	
Open Hole Size		7.875	
Type Fluid		WATER	
Density / Viscosity		1.0	
Max. Recorded Temp.		223	
Estimated Cement Top		934	
Time Well Ready			
Time Logger on Bottom			
Equipment Number		3812	
Location		GREELEY	
Recorded By		J.J.Bullard	
Witnessed By		L.Webb	
Borehole Record		Tubing Record	
Run Number		Bit	
From		To	
Size		Weight	
From		To	
ONE			
TWO			
Casing Record		Size	
Surface String		Wgt/Ft	
Prot. String		Top	
Production String		Bottom	
Liner			

<<< Fold Here >>>

All interpretations are opinions based on inferences from electrical or other measurements and we cannot and do not guarantee the accuracy or correctness of any interpretation, and we shall not, except in the case of gross or willful negligence on our part, be liable or responsible for any loss, costs, damages, or expenses incurred or sustained by anyone resulting from any interpretation made by any of our officers, agents or employees. These interpretations are also subject to our general terms and conditions set out in our current Price Schedule.

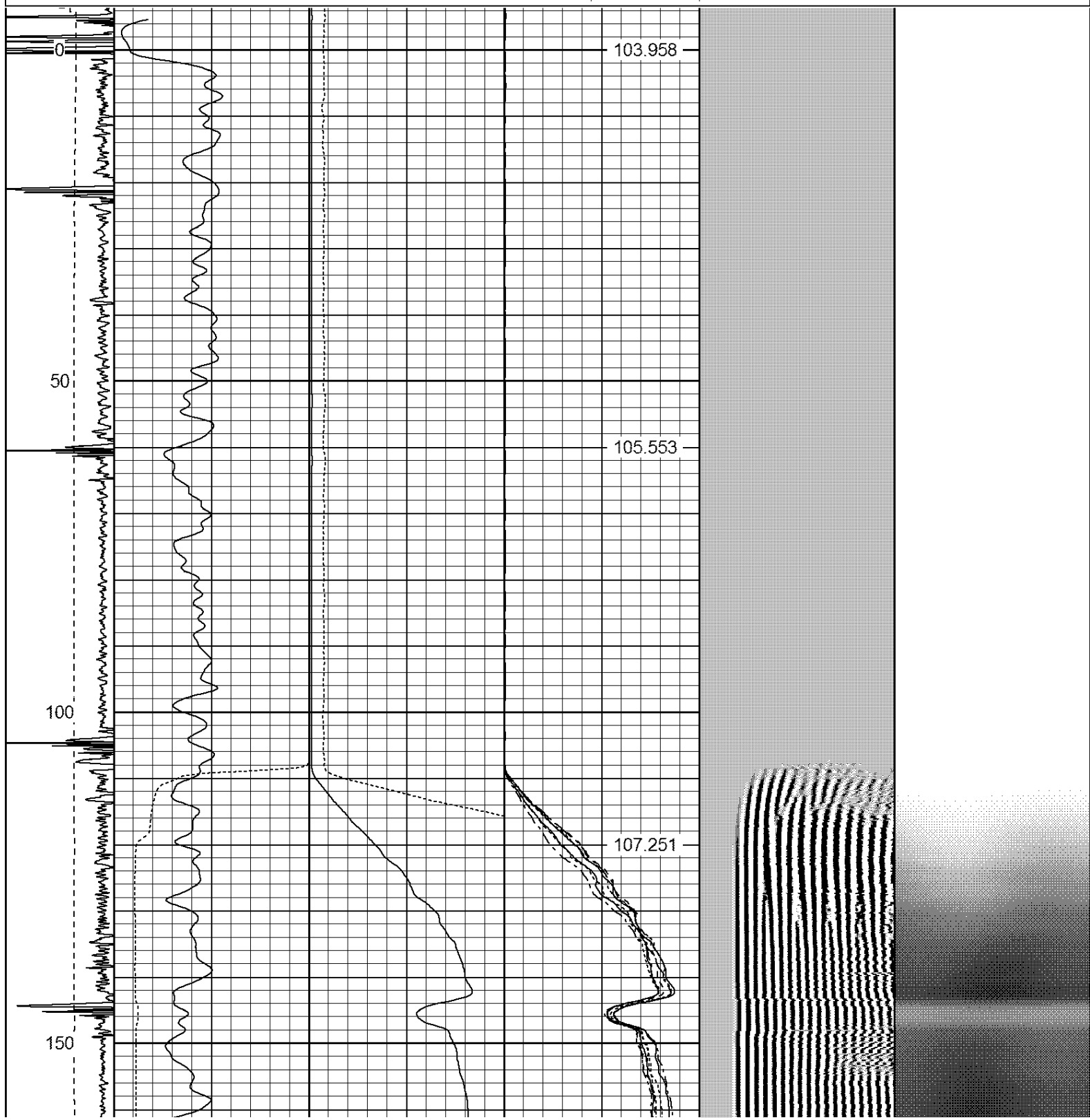
Comments

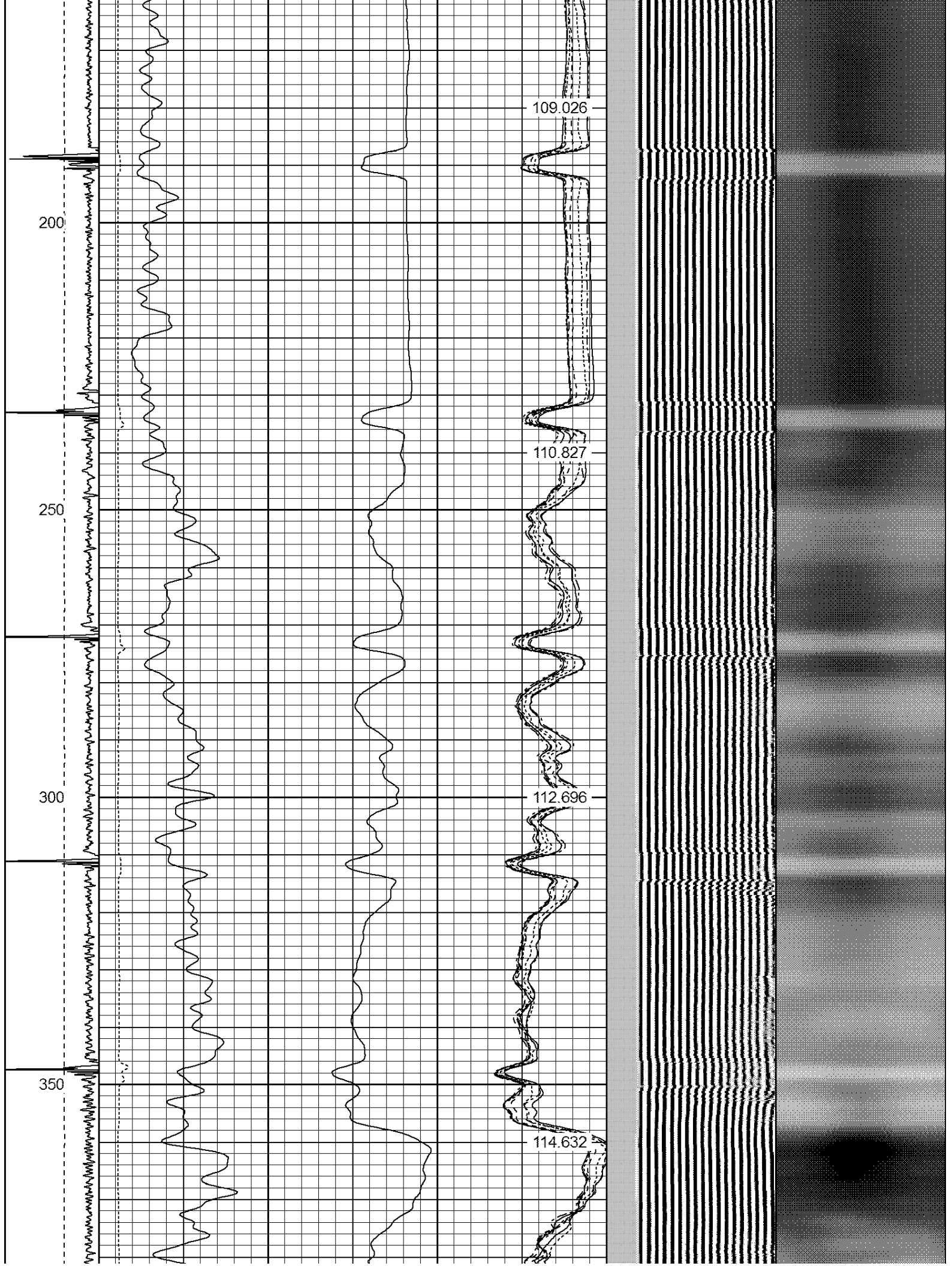
RAN CBL TO VERIFY CEMENT.
NO CEMENT FROM 6340-1035 PER PREVIEW PASS
THANK YOU FOR USING WARRIOR ENERGY!!!!

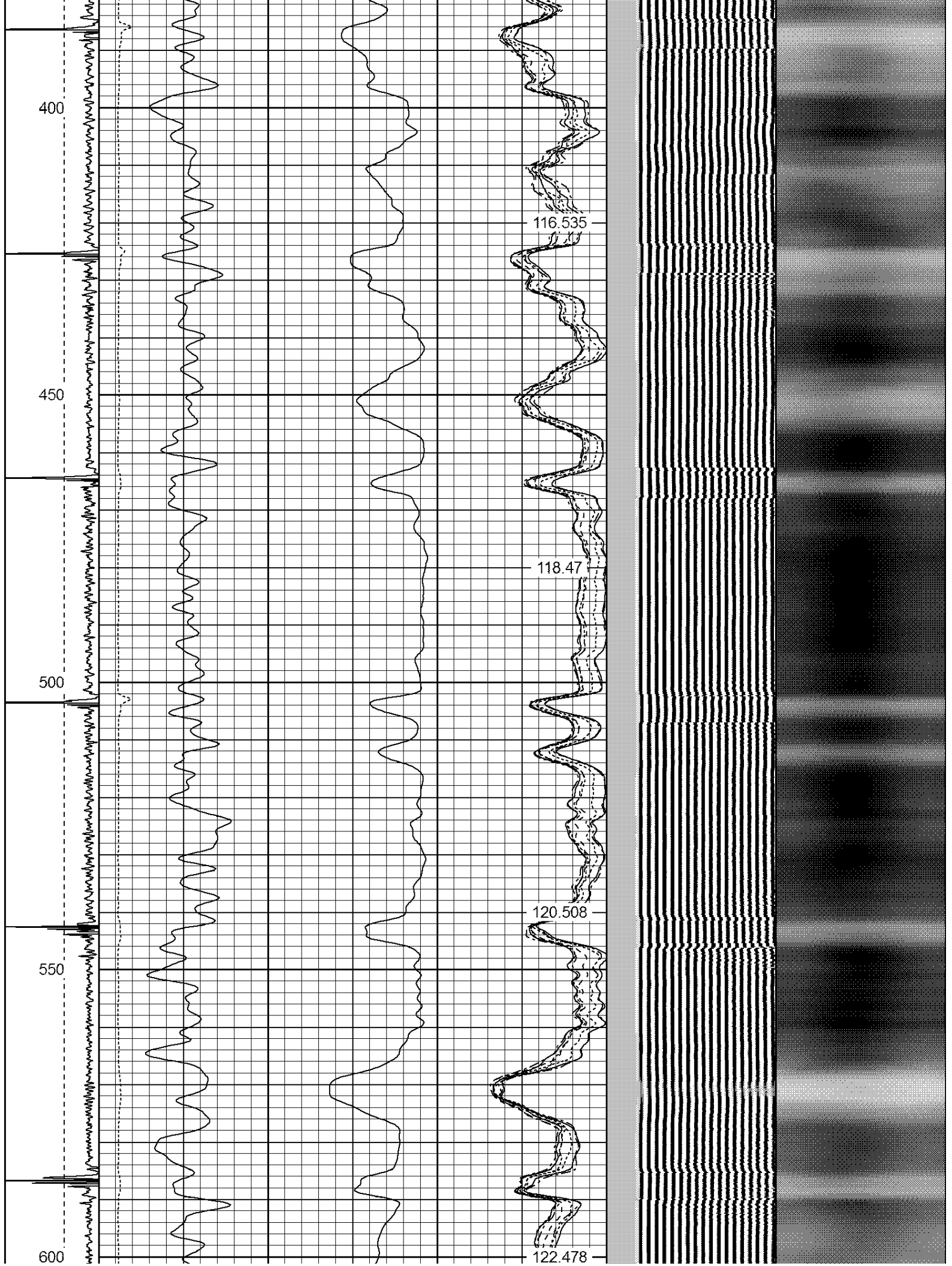
Sensor	Offset (ft)	Schematic	Description	Len (ft)	OD (in)	Wt (lb)
						

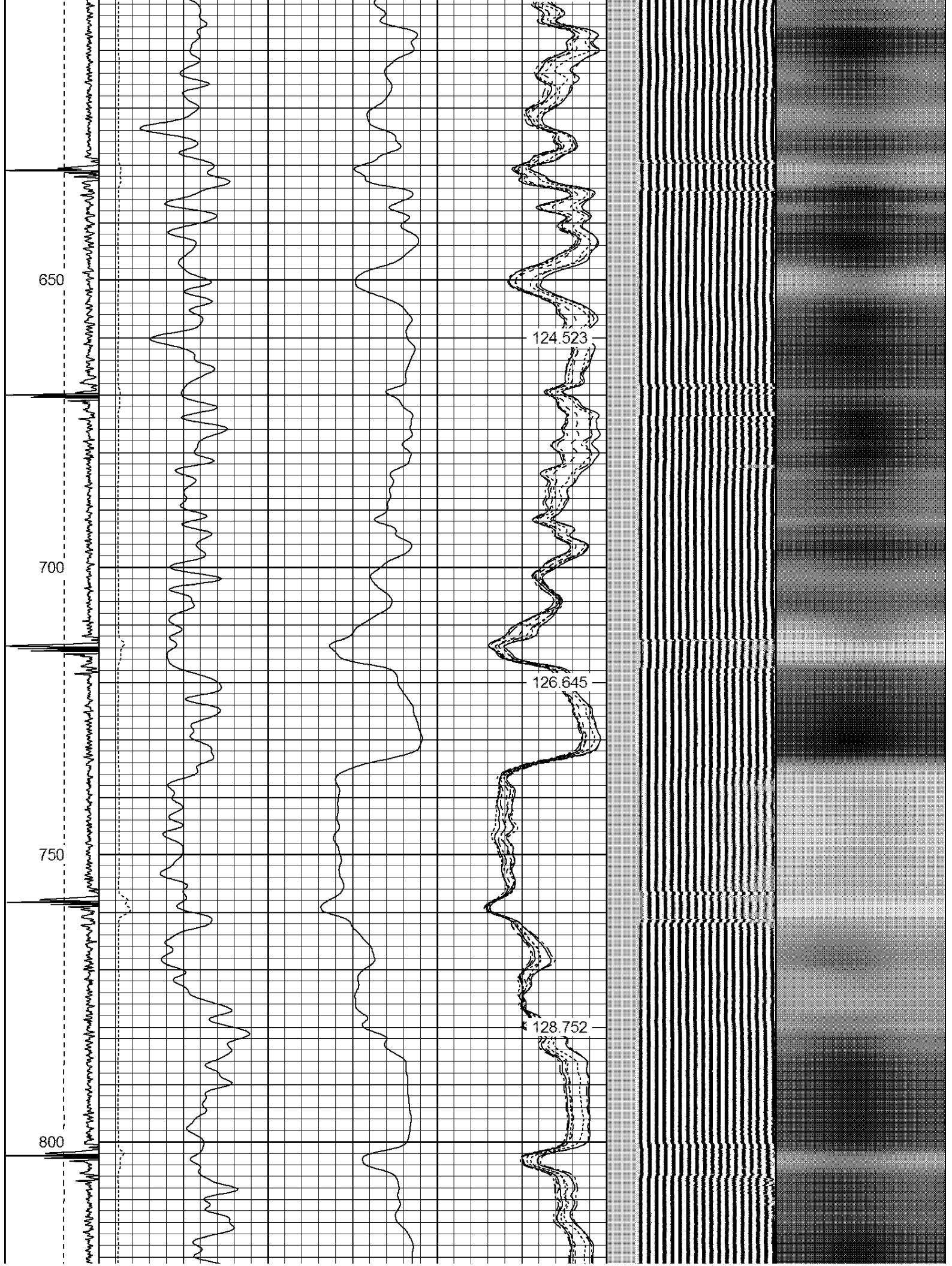
[illegible]

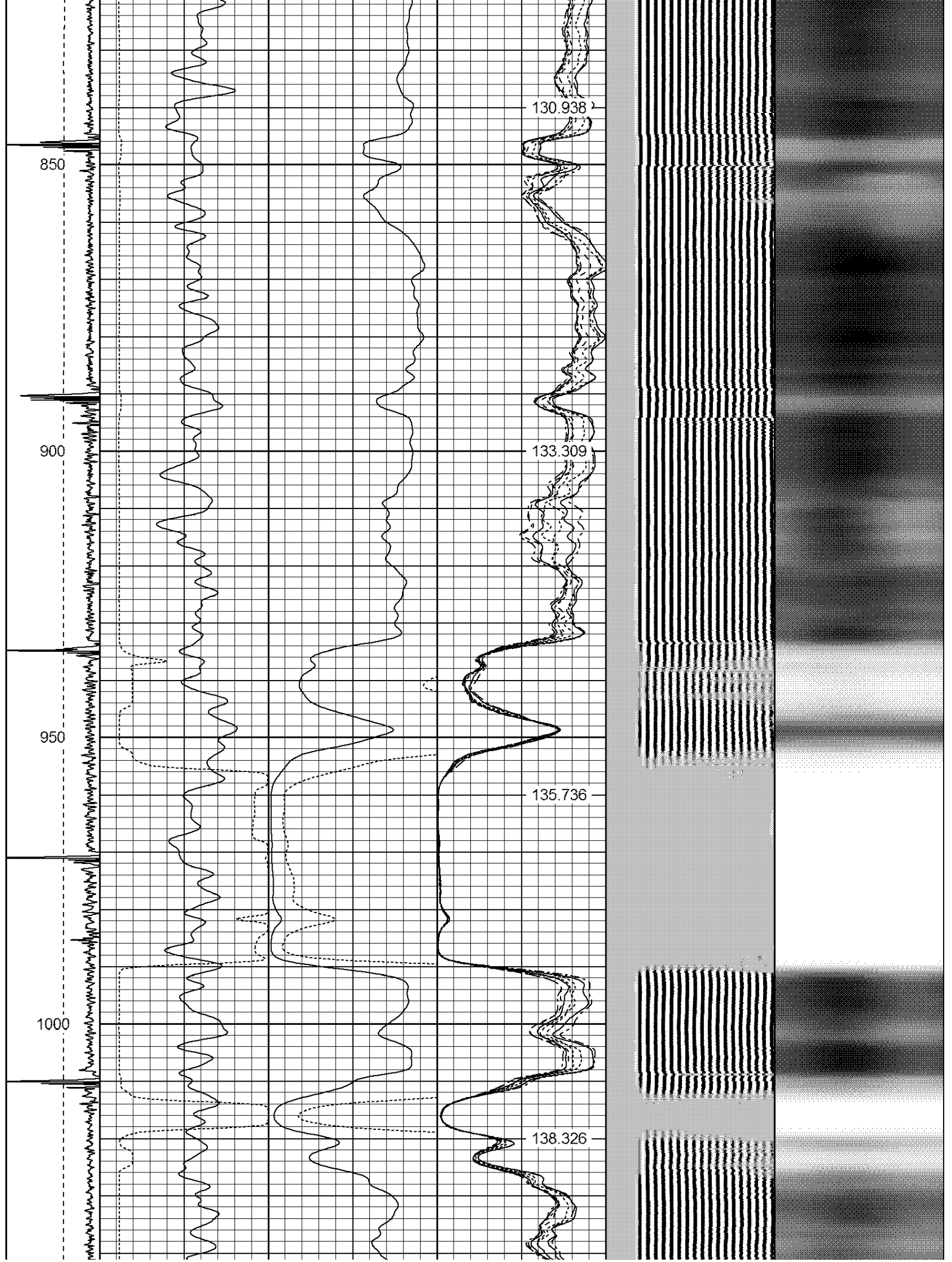
-9	CCL	1	200	TT (usec)	800	0	AMP (mV)	100	0	AMPS1	100	200	VDL	1200	1	Cement Map	8
LSPD			0	GR (GAPI)	200	0	AMPx5 (mV)	20	0	AMPS2	100				1		100
(ft/min)			200	GR (GAPI)	400				0	AMPS4	100						
0		250							0	AMPS5	100						
									0	AMPS6	100						
									0	AMPS7	100						
									0	AMPS8	100						
										IntTemp							
										(degF)							

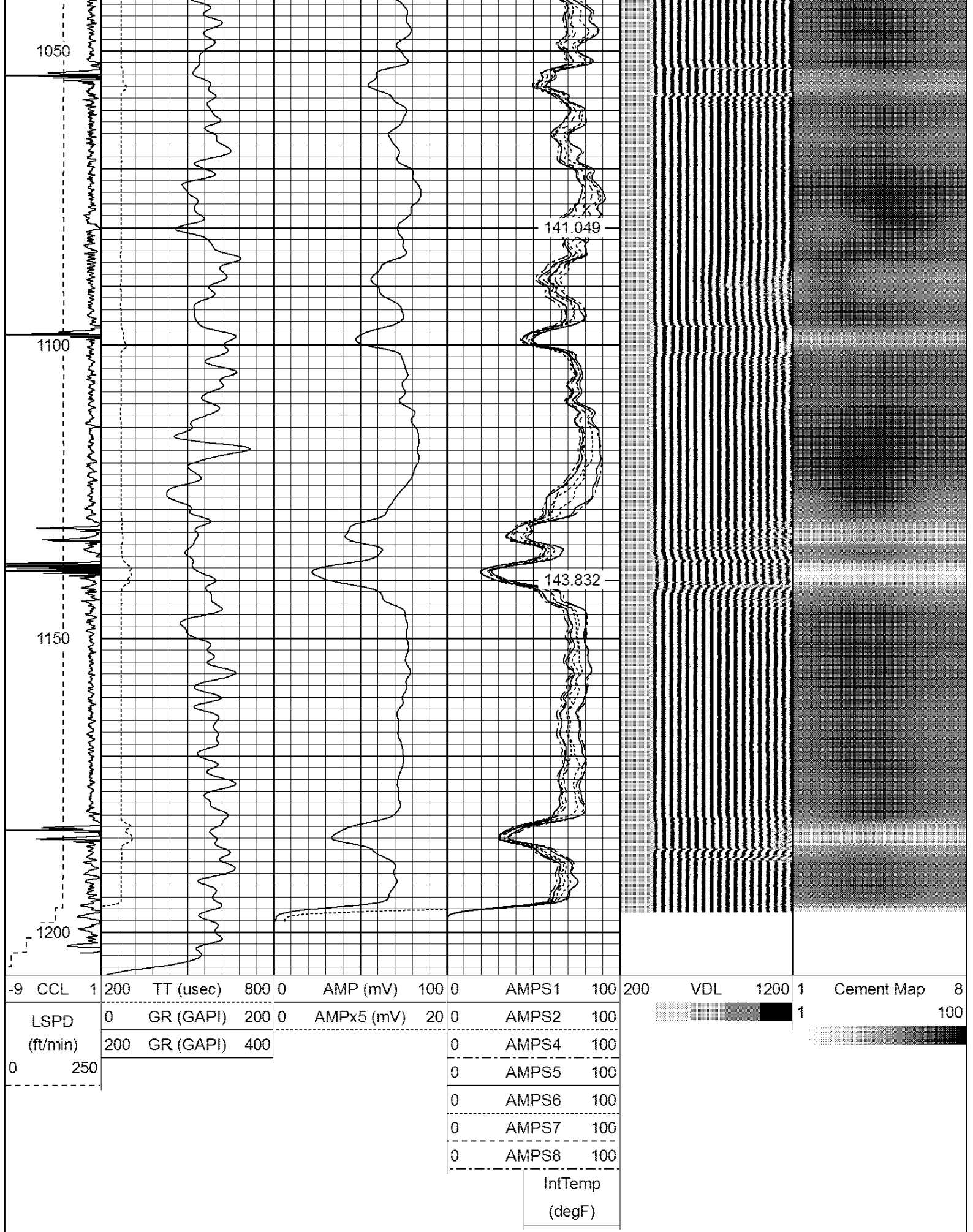






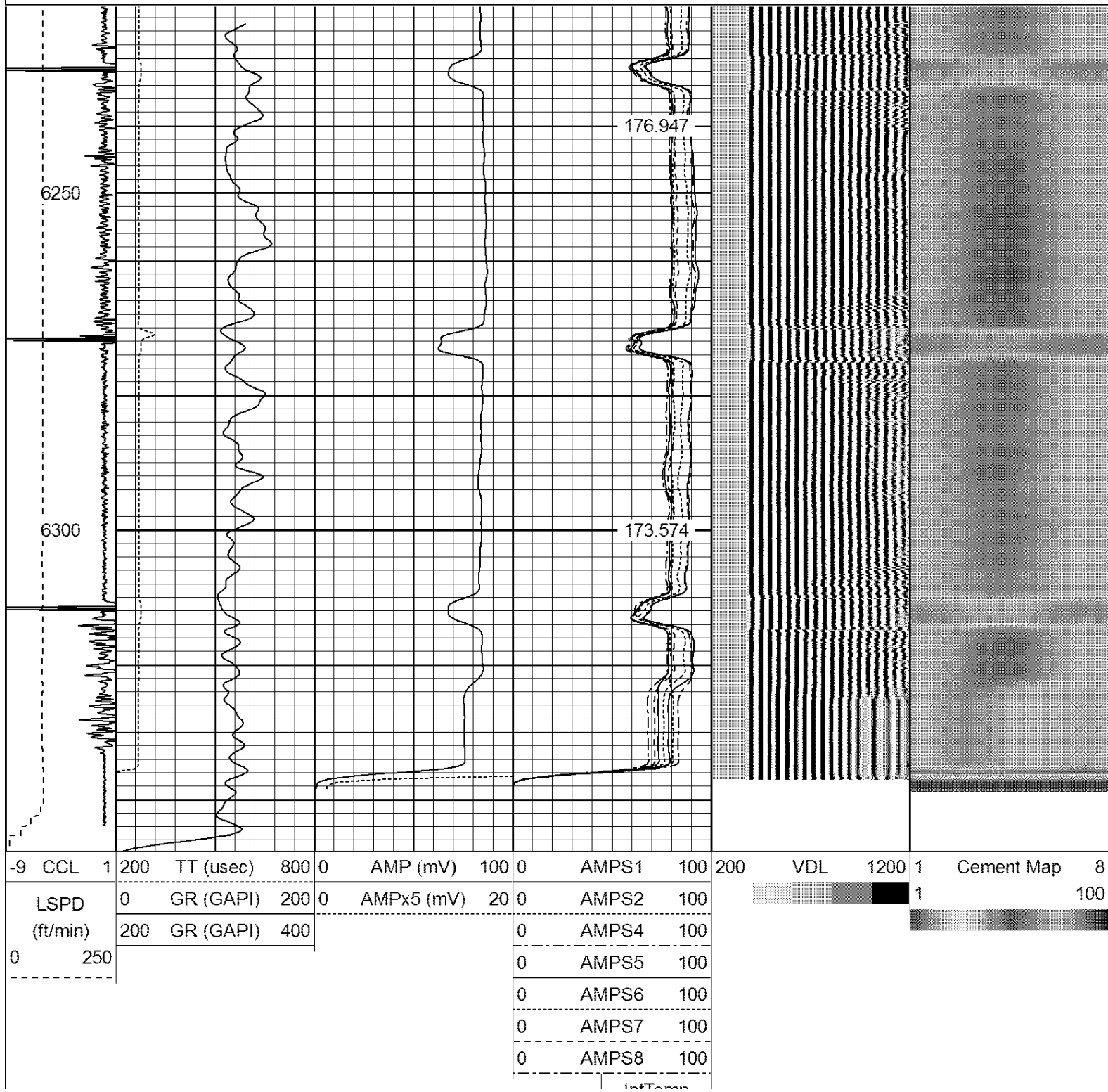




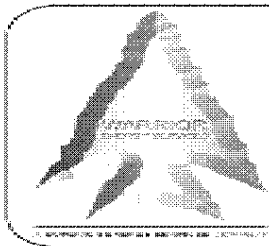




-9	CCL	1	200	TT (usec)	800	0	AMP (mV)	100	0	AMPS1	100	200	VDL	1200	1	Cement Map	8
LSPD (ft/min)	0	250	0	GR (GAPI)	200	0	AMPx5 (mV)	20	0	AMPS2	100		1	100			
			200	GR (GAPI)	400	0	AMPS4	100	0	AMPS5	100						
						0	AMPS6	100	0	AMPS7	100						
						0	AMPS8	100									
										IntTemp (degF)							



intemp
(degF)



WARRIOR
ENERGY SERVICES

Company Kerr McGee Oil and Gas

Well Helgoth Heirs UT#1

Field Wattenberg

County Weld

State CO