

Chama Oil and Minerals – Sors 1P Surface

Sales Order: 90005362

Cementing Post Job Report

Date: Monday, December 24, 2012

Notice: Although the information contained in this report is based on sound engineering practices, the copyright owner(s) does (do) not accept any responsibility whatsoever, in negligence or otherwise, for any loss or damage arising from the possession or use of the report whether in terms of correctness or otherwise. The application, therefore, by the user of this report or any part thereof, is solely at the user's own risk.

HALLIBURTON

Table of Contents

1.0	Design	3
1.1	Customer Information	3
2.0	Job	4
2.1	Job Event Log	4
	Date	5
	Operating Hours	5
2.1.1	Conc	6
3.0	Job Information	7
4.0	Attachments	9
4.1	Job Summary Chart	9

1.0 DESIGN**1.1 Customer Information**

Customer	Chama Oil & Minerals
Sales Order	90005362
Job Configuration	Conventional Cement
Well Name	Sors
Well Number	1P
Start Time	Monday, December 24, 2012
County	Washington
State	Colorado
UWI/API	
Country	USA
H2S Present	Unknown
CO2 Present	Unknown
Customer Representative	Rodney Wilson
Service Representative	Jonathan Snyder
Job Name	CHAMA OIL & MINERAL Sors 1P Surface
Injection Path	Casing

2.0 Job

2.1 Job Event Log

Job Log

Date/Time	Chart #	Activity Code	Pump Rate	Cum Vol	Pump	Pressure (psig)	Comments
12/25/2012 14:00		Arrive at Location from Service Center					ARRIVED AND CONDUCTED A HAZARD HUNT AND FOUND NO HAZARDS THAT CONFLICT WITH US RIGGING UP EQUIPMENT.
12/26/2012 18:30		Pre-Job Safety Meeting					HELD SAFETY MEETING WITH ALL EMPLOYEES AND ALL THIRD PARTY PERSONEL PRIOR TO PUMPING THE CEMENT JOB.
12/26/2012 19:27		Start Job					
12/26/2012 19:50		Test Lines					PRESSURE TEST LINES TO 2864 PSI
12/26/2012 19:52		Drop Bottom Plug					PRELOADED THE PLUG IN THE CASING PRIOR TO STABBING THE PLUG CONTAINER.
12/26/2012 19:53		Pump Spacer 1	4	20		44.3	W/ FRESH WATER
12/26/2012 19:59		Pump Cement	5	138		82.3	390 SKS SWIFTCEM MIXED @ 13 PPG W/ RIG WATER
12/26/2012 20:47		Shutdown					
12/26/2012 20:47		Drop Top Plug					PLUG PRELOADED, DROPPED PRIOR TO PUMPING DISPLACEMENT
12/26/2012 20:47		Pump Displacement	4	72		98.3	W/ FRESH WATER
12/26/2012 21:07		Bump Plug	3			157.3	GOOD RETURNS THROUGHOUT THE JOB. WE GOT CEMENT BACK TO SURFACE WITH 47 BBLs OF DISPLACEMENT AWAY SO WE GOT 25 BBLs BACK TO SURFACE.
12/26/2012 21:10		Check Floats				855.3	W/ FRESH WATER, WE GOT 0.5 BBLs OF WATER BACK IN THE DISPLACEMENT TANKS WHEN WE CHECKED FLOATS.
12/26/2012 21:12		End Job					ENDED JOB AND STARTED TO RIG DOWN BUT THE CEMENT FELL IN THE ANNULUS SO WE HAD TO RIG BACK UP AND DO A TOP OUT JOB.
12/26/2012 23:45		Start Job					ONCE WE RIGGED UP WE STARTED THE TOP OUT JOB.
12/26/2012 23:48		Pump Cement	2	8		-2.7	40 SKS PREMIUM G NEAT MIXED @ 15.8#, PUMPED CEMENT UNTIL THE COMPANY MAN WAS HAPPY WITH WHERE IT IS AND WE SHUTDOWN AND WASHED UP THE TRUCK.
12/26/2012 23:52		Shutdown					SHUTDOWN AND MADE SURE THE CEMENT DIDNT DROP.
12/27/2012 00:00		End Job					
12/27/2012 00:15		Pre-Rig Down Safety Meeting					HELD SAFETY MEETING WITH ALL EMPLOYEES PRIOR TO RIGGING DOWN AND DISCUSSED ALL HAZARDS WHILE RIGGING DOWN EQUIPMENT.
12/27/2012 03:00		Depart Location for Service Center or Other Site					HELD SAFETY MEETING PRIOR TO LEAVING LOCATION AND DISCUSSED ALL POTENTIAL HAZARDS WHILE DRIVING BACK TO THE SERVICE CENTER.

The Road to Excellence Starts with Safety

Sold To #: 368226		Ship To #: 2970310		Quote #:		Sales Order #: 900095362	
Customer: CHAMA OIL & MINERALS LLC - EBUS				Customer Rep: Wilson, Rodney			
Well Name: Sors			Well #: 1P		API/UWI #: 05-121-11018		
Field:		City (SAP): KIMBALL		County/Parish: Washington		State: Colorado	
Lat: N 40.279 deg. OR N 40 deg. 16 min. 45.808 secs.				Long: W 103.394 deg. OR W -104 deg. 36 min. 19.814 secs.			
Contractor: chama oil and gas			Rig/Platform Name/Num: precision706				
Job Purpose: Cement Surface Casing							
Well Type: Development Well				Job Type: Cement Surface Casing			
Sales Person: AARON, WESLEY				Srvc Supervisor: SNYDER, JONATHAN		MBU ID Emp #: 435616	

Job Personnel

HES Emp Name	Exp Hrs	Emp #	HES Emp Name	Exp Hrs	Emp #	HES Emp Name	Exp Hrs	Emp #
BROOM, KENDALL L	8.5	524682	CARPENTER, JACOB P	8.5	499500	DIRKS, RICHARD E	8.5	485940
JEWELL, WILLIAM Uris	36.0	503358	LAVALLEY, LARRY P	8.5	419296	MULLER, MICHEL B	36.0	529830
ROMERO, JOSEPH M	36.0	512137	SINCLAIR, RICHARD	0.0	368195	SNYDER, JONATHAN Leroy	36.0	435616

Equipment

HES Unit #	Distance-1 way	HES Unit #	Distance-1 way	HES Unit #	Distance-1 way	HES Unit #	Distance-1 way
10248053C	86 mile	10867419C	86 mile	11410470C	86 mile	11488570C	86 mile
11518549	86 mile	11526488	86 mile				

Job Hours

Date	On Location Hours	Operating Hours	Date	On Location Hours	Operating Hours	Date	On Location Hours	Operating Hours
TOTAL			<i>Total is the sum of each column separately</i>					

Job

Formation Name					Job Times			
Formation Depth (MD)	Top	Bottom			Called Out	Date	Time	Time Zone
Form Type			BHST		On Location	25 - Dec - 2012	14:00	MST
Job depth MD	550. ft		Job Depth TVD		Job Started	26 - Dec - 2012	19:27	MST
Water Depth			Wk Ht Above Floor		Job Completed	26 - Dec - 2012	21:12	MST
Perforation Depth (MD)	From	To			Departed Loc	27 - Dec - 2012	02:00	MST

Well Data

Description	New / Used	Max pressure psig	Size in	ID in	Weight lbm/ft	Thread	Grade	Top MD ft	Bottom MD ft	Top TVD ft	Bottom TVD ft
17 1/2" Open Hole Section				17.5				.	530.		
13 3/8" Surface Casing	Unknown		13.375	12.515	61.		J-55	.	530.		

Tools and Accessories

Type	Size	Qty	Make	Depth	Type	Size	Qty	Make	Depth	Type	Size	Qty	Make
Guide Shoe					Packer					Top Plug			
Float Shoe					Bridge Plug					Bottom Plug			
Float Collar					Retainer					SSR plug set			
Insert Float										Plug Container			
Stage Tool										Centralizers			

Miscellaneous Materials

Gelling Agt	Conc	Surfactant	Conc	Acid Type	Qty	Conc	%
-------------	------	------------	------	-----------	-----	------	---

Treatment Fld		Conc		Inhibitor				Sand Type		Size		Qty	
Fluid Data													
Stage/Plug #: 1													
Fluid #	Stage Type	Fluid Name			Qty	Qty uom	Mixing Density lbm/gal	Yield ft3/sk	Mix Fluid Gal/sk	Rate bbl/min	Total Mix Fluid Gal/sk		
1	WATER SPACER				20.00	bbl	8.33	.0	42.0	5.0			
2	SWIFTCEM	SWIFTCEM (TM) SYSTEM (452990)			390.0	sacks	13.	1.99	10.9	5.0	10.9		
10.9 Gal		FRESH WATER											
3	DISPLACEMENT				72.00	bbl	8.34	.0	42.0	5.0			
4	HalCem	HALCEM (TM) SYSTEM (452986)			40.0	sacks	15.8	1.17	5.02	1.0	5.02		
5.019 Gal		FRESH WATER											
Calculated Values		Pressures				Volumes							
Displacement		Shut In: Instant				Lost Returns				Cement Slurry		Pad	
Top Of Cement		5 Min				Cement Returns				Actual Displacement		Treatment	
Frac Gradient		15 Min				Spacers				Load and Breakdown		Total Job	
Rates													
Circulating		Mixing				Displacement				Avg. Job			
Cement Left In Pipe		Amount	81 ft	Reason	Shoe Joint								
Frac Ring # 1 @		ID		Frac ring # 2 @		ID		Frac Ring # 3 @		ID		Frac Ring # 4 @	
The Information Stated Herein Is Correct					Customer Representative Signature								

3.0 JOB INFORMATION

Job Start Date	12/24/2012	Mud loss while Circulating	
Job MD	530 ft	Pipe Movement During Hole Circulation	None
Job TVD	530 ft	Pipe Movement During Cementing	None
Height of Plug Container/Swage Above Rig Floor	5.0 ft	Calculated Displacement	
Surface Temperature at Time of Job	32 degF	Job Displaced by (rig/halco)	Cement Unit HP Pumps
Mud Type	Spud Mud	Annular flow Before Job? (Water/Gas)	Unknown
Actual Mud Density		Annular flow After Job? (Water/Gas)	Unknown
Time Circulated before job			
Mud Volume Circulated			
Rate at Which Well was Circulated			

Cementing Equipment

Pipe Centralization	Through Entire Cement Column
Brand of Float Equipment Used	Halliburton
Did Float Equipment Hold?	Yes
Plug set used?	Unknown
Did Plugs Bump?	Yes

Pumping Schedule

Job Tubulars					MD		Shoe Joint Length ft
Type	Description	Size in	ID in	Wt lbm/ft	Top ft	Bottom ft	
Casing	13 3/8" Surface Casing	13.38	12.515	61.00	0.00	530.00	81.00
Open Hole Section	17 1/2" Open Hole Section		17.500		0.00	530.00	0.00

Fluids Pumped

Stage/Plug # 1 **Fluid 1:** WATER SPACER
DUMMY MUD / FLUSH / SPACER SBC MATERIAL

Fluid Density: 8.33 lbm/gal
Fluid Volume: 20.00 bbl
Pump Rate: 5.00 bbl/min

Stage/Plug # 1 **Fluid 2:** SWIFTCEM
SWIFTCEM (TM) SYSTEM

Fluid Weight: 13.00 lbm/gal
Slurry Yield: 1.99 ft³/sack
Total Mixing Fluid: 10.90 Gal
Surface Volume: 390.0 sacks
Sacks: 390.0 sacks
Calculated Fill: 530.00 ft
Calculated Top of Fluid: 0.00 ft
Pump Rate: 5.00 bbl/min

Stage/Plug # 1 **Fluid 3:** DISPLACEMENT
DUMMY MUD / FLUSH / SPACER SBC MATERIAL

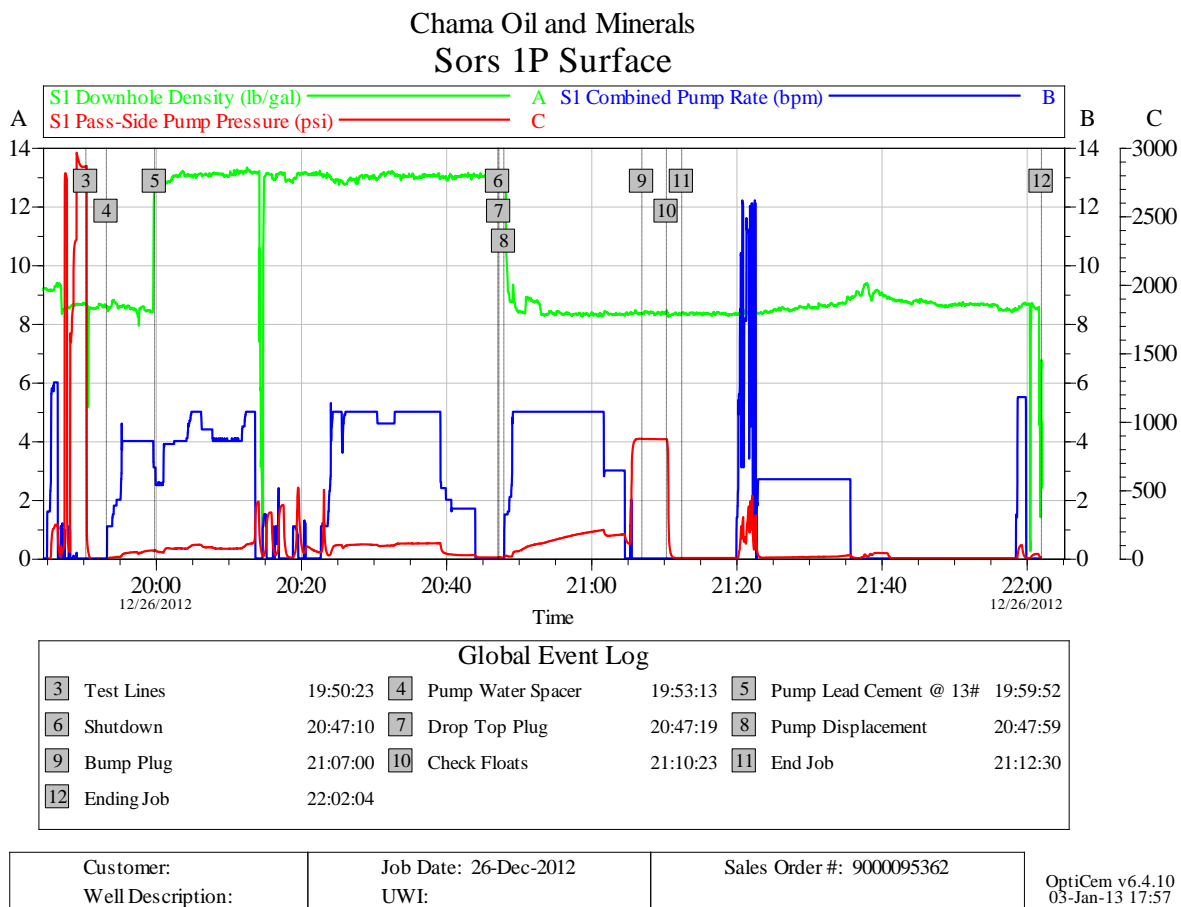
Fluid Density: 8.34 lbm/gal
Fluid Volume: 72.00 bbl
Pump Rate: 5.00 bbl/min

Stage/Plug # 1 **Fluid 4:** HalCem
HALCEM (TM) SYSTEM

Fluid Weight: 15.80 lbm/gal
Slurry Yield: 1.17 ft³/sack
Total Mixing Fluid: 5.02 Gal
Surface Volume: 40.0 sacks
Sacks: 40.0 sacks
Estimated Top of Fluid:
Pump Rate: 1.00 bbl/min

4.0 ATTACHMENTS

4.1 Job Summary Chart



HALLIBURTON

Field Ticket

Field Ticket Number: 900095362

Field Ticket Date: Thursday, December 27, 2012

Bill To:

CHAMA OIL & MINERALS LLC - EBUS
DONOTMAIL - PO BOX 50203
MIDLAND, TX 79710

Job Name:

Sors

Order Type:

Streamline Order (ZOH)

Well Name:

Sors 1P

Company Code:

1100

Customer PO No.:

NA

Shipping Point:

Brighton, CO, USA

Sales Office:

Rocky Mountains BD

Well Type:

Gas

Well Category:

Development

Ship To:

CHAMA SORS 1P,CHEYENNE
SORS 1P
2970310
KIMBALL, NE 69145

Material	Description	QTY	UOM	Base Amt	Unit Amt	Gross Amount	Discount	Net Amount
7521	CMT SURFACE CASING BOM	1	JOB	0.00	0.00	0.00	65%	0.00
16091	ZI - PUMPING CHARGE	1	EA	0.00	4,935.00	4,935.00	65%	1,727.25
	DEPTH	550						
	FEET/METERS (FT/M)		FT					
452990	SWIFTCM (TM) SYSTEM	390	SK			24,740.91	65.0%	8,659.32
432904	CMT, ROCKIES SG SETUP	1	EA			11,579.00	52.43%	5,508.65
432905	CMT, ROCKIES SG MILEAGE	172	MI			5,655.36	61.48%	2,178.38
	Number of Units	2						
432906	CMT, ROCKIES SG DELIVERY	546	TNM			12,292.45	62.52%	4,607.23
	NUMBER OF TONS	24.79						
16092	ADDITIONAL HOURS (PUMPING EQUIPMENT), ZI	1	EA	0.00	1,071.00	32,130.00	65%	11,245.50
	HOURS	30						
452986	HALCEM (TM) SYSTEM	100	SK			1,550.40	65.0%	542.64
45	100 FEET 1 INCH TOP OUT PIPE	1	EA	0.00	486.00	486.00		486.00
87605	ZI FUEL SURCHG-CMT & CMT ADDITIVES	86	MI	0.00	0.22	53.35		53.35
	NUMBER OF TONS	2.82						
76400	ZI MILEAGE,CMT MTLs DEL/RET MIN	86	MI	0.00	3.35	812.44	65%	284.35
	NUMBER OF TONS	2.82						
Halliburton Rep: JONATHAN SNYDER				Totals	USD	94,234.91	58,942.24	35,292.67
Customer Agent: Rodney Wilson								
Halliburton Approval:								

THIS OUTPUT DOES NOT INCLUDE TAXES. APPLICABLE SALES TAX WILL BE BILLED ON THE FINAL INVOICE.
CUSTOMER HEREBY ACKNOWLEDGES RECEIPT OF THE MATERIALS AND SERVICES DESCRIBED ABOVE AND ON THE ATTACHED DOCUMENTS.

X

FIELD TICKET TOTAL: USD

35,292.67

Customer Signature

Was our HSE performance satisfactory? **Y or N**
(Health, Safety, Environment)

Were you satisfied with our Equipment? **Y or N**

Were you satisfied with our people? **Y or N**

Comments