

---

**WPX ENERGY ROCKY MOUNTAIN LLC-EBUS**

---

**PA 531-21  
PARACHUTE  
Garfield County , Colorado**

**Cement Surface Casing**  
**14-Oct-2013**

**Post Job Summary**

*The Road to Excellence Starts with Safety*

<b>Sold To #:</b> 300721		<b>Ship To #:</b> 3111533		<b>Quote #:</b>		<b>Sales Order #:</b> 900818049	
<b>Customer:</b> WPX ENERGY ROCKY MOUNTAIN LLC-EBUS				<b>Customer Rep:</b> Towers, Ron			
<b>Well Name:</b> PA			<b>Well #:</b> 531-21			<b>API/UWI #:</b> 05-045-22026	
<b>Field:</b> PARACHUTE		<b>City (SAP):</b> PARACHUTE		<b>County/Parish:</b> Garfield		<b>State:</b> Colorado	
<b>Legal Description:</b>							
<b>Lat:</b> N 39.51 deg. OR N 39 deg. 30 min. 37.75 secs.				<b>Long:</b> W 108.008 deg. OR W -109 deg. 59 min. 31.038 secs.			
<b>Contractor:</b> Nabors			<b>Rig/Platform Name/Num:</b> Nabors 573				
<b>Job Purpose:</b> Cement Surface Casing						<b>Ticket Amount:</b>	
<b>Well Type:</b> Development Well			<b>Job Type:</b> Cement Surface Casing				
<b>Sales Person:</b> MAYO, MARK			<b>Srvc Supervisor:</b> REEVES, BRANDON			<b>MBU ID Emp #:</b> 287883	

Activity Description	Date/Time	Cht #	Rate bbl/min	Volume bbl		Pressure psig		Comments
				Stage	Total	Tubing	Casing	
Call Out	10/13/2013 16:15							
Depart from Service Center or Other Site	10/13/2013 18:00							
Arrive At Loc	10/13/2013 20:30							
Assessment Of Location Safety Meeting	10/13/2013 22:00							
Other	10/13/2013 22:30							SPOT EQUIPMENT
Pre-Rig Up Safety Meeting	10/13/2013 22:45							
Rig-Up Equipment	10/13/2013 23:00							
Pre-Job Safety Meeting	10/14/2013 02:25							
Start Job	10/14/2013 02:34							TD-1725' TP-1720' SJ-43' MW-10.2 PPG. HOLE- 13 1/2" CASING-9 5/8" 32.3 PPF.
Test Lines	10/14/2013 02:36					3700.0		
Pump Spacer 1	10/14/2013 02:41		4	30			155.0	FRESH WATER SPACER
Pump Lead Cement	10/14/2013 02:51		8	116.6			375.0	275 SKS. @ 12.3 PPG. 2.38 YIELD 13.75 GAL/SK.
Pump Tail Cement	10/14/2013 03:07		8	65.8			330.0	175 SKS. @ 12.8 PPG. 2.11 YIELD 11.75 GAL/SK.
Drop Top Plug	10/14/2013 03:16							
Pump Displacement	10/14/2013 03:19		10				695.0	FRESH WATER DISPLACEMENT.

## Cementing Job Log

Activity Description	Date/Time	Cht #	Rate bbl/min	Volume bbl		Pressure psig		Comments
				Stage	Total	Tubing	Casing	
Slow Rate	10/14/2013 03:33		2	122			375.0	SLOW RATE TO LAND THE PLUG.
Bump Plug	10/14/2013 03:36		2	130			390.0	PLUG LANDED AT 390 PSI. PRESSURED UP TO 800 PSI.
Check Floats	10/14/2013 03:39							FLOATS HELD. .5 BBL. FLOW BACK
End Job	10/14/2013 03:40							THE WELL WAS CIRCULATED BEFORE STARTING THE JOB. GOOD CIRCULATION THROUGHOUT THE JOB. THE PIPE WAS RECIPROCATED WHILE PUMPING CEMENT. CIRCULATED 28 BBLS. OF CEMENT TO SURFACE.
Comment	10/14/2013 03:42							THANK YOU FOR USING HALLIBURTON CEMENTING. BRANDON REEVES AND CREW.

## The Road to Excellence Starts with Safety

Sold To #: 300721	Ship To #: 3111533	Quote #:	Sales Order #: 900818049
Customer: WPX ENERGY ROCKY MOUNTAIN LLC-EBUS	Customer Rep: Towers, Ron		
Well Name: PA	Well #: 531-21	API/UWI #: 05-045-22026	
Field: PARACHUTE	City (SAP): PARACHUTE	County/Parish: Garfield	State: Colorado
Lat: N 39.51 deg. OR N 39 deg. 30 min. 37.75 secs.	Long: W 108.008 deg. OR W -109 deg. 59 min. 31.038 secs.		
Contractor: Nabors	Rig/Platform Name/Num: Nabors 573		
Job Purpose: Cement Surface Casing			
Well Type: Development Well	Job Type: Cement Surface Casing		
Sales Person: MAYO, MARK	Srvc Supervisor: REEVES, BRANDON	MBU ID Emp #: 287883	

## Job Personnel

HES Emp Name	Exp Hrs	Emp #	HES Emp Name	Exp Hrs	Emp #	HES Emp Name	Exp Hrs	Emp #
ANDERSON, ADAM S	6.0	456683	ATKINSON, STEPHAN Michael	6.0	513940	BROWN, JUSTIN Michael	6.0	549296
REEVES, BRANDON W	6.0	287883						

## Equipment

HES Unit #	Distance-1 way	HES Unit #	Distance-1 way	HES Unit #	Distance-1 way	HES Unit #	Distance-1 way
10025118	60 mile	10744549	60 mile	10872429	60 mile	10995027	60 mile
11360881	60 mile	11583932	60 mile	11808847	60 mile		

## Job Hours

Date	On Location Hours	Operating Hours	Date	On Location Hours	Operating Hours	Date	On Location Hours	Operating Hours
10/13/2013	2	0	10/14/2013	4	3			

**TOTAL** Total is the sum of each column separately

## Job

Formation Name	Top	Bottom	Called Out	Date	Time	Time Zone
Formation Depth (MD)			On Location	13 - Oct - 2013	16:15	MST
Form Type		BHST	Job Started	13 - Oct - 2013	20:30	MST
Job depth MD	1720. ft	Job Depth TVD	Job Completed	14 - Oct - 2013	02:34	MST
Water Depth		Wk Ht Above Floor	Departed Loc	14 - Oct - 2013	03:40	MST
Perforation Depth (MD)	From	To		14 - Oct - 2013	00:00	MST

## Well Data

Description	New / Used	Max pressure psig	Size in	ID in	Weight lbm/ft	Thread	Grade	Top MD ft	Bottom MD ft	Top TVD ft	Bottom TVD ft
-------------	------------	-------------------	---------	-------	---------------	--------	-------	-----------	--------------	------------	---------------

## Tools and Accessories

Type	Size	Qty	Make	Depth	Type	Size	Qty	Make	Depth	Type	Size	Qty	Make
Guide Shoe					Packer					Top Plug	9 5/8'	1	
Float Shoe					Bridge Plug					Bottom Plug			
Float Collar					Retainer					SSR plug set			
Insert Float										Plug Container	9 5/8"	1	
Stage Tool										Centralizers			

## Miscellaneous Materials

Gelling Agt		Conc		Surfactant		Conc		Acid Type		Qty		Conc	%
Treatment Fld		Conc		Inhibitor		Conc		Sand Type		Size		Qty	

## Fluid Data

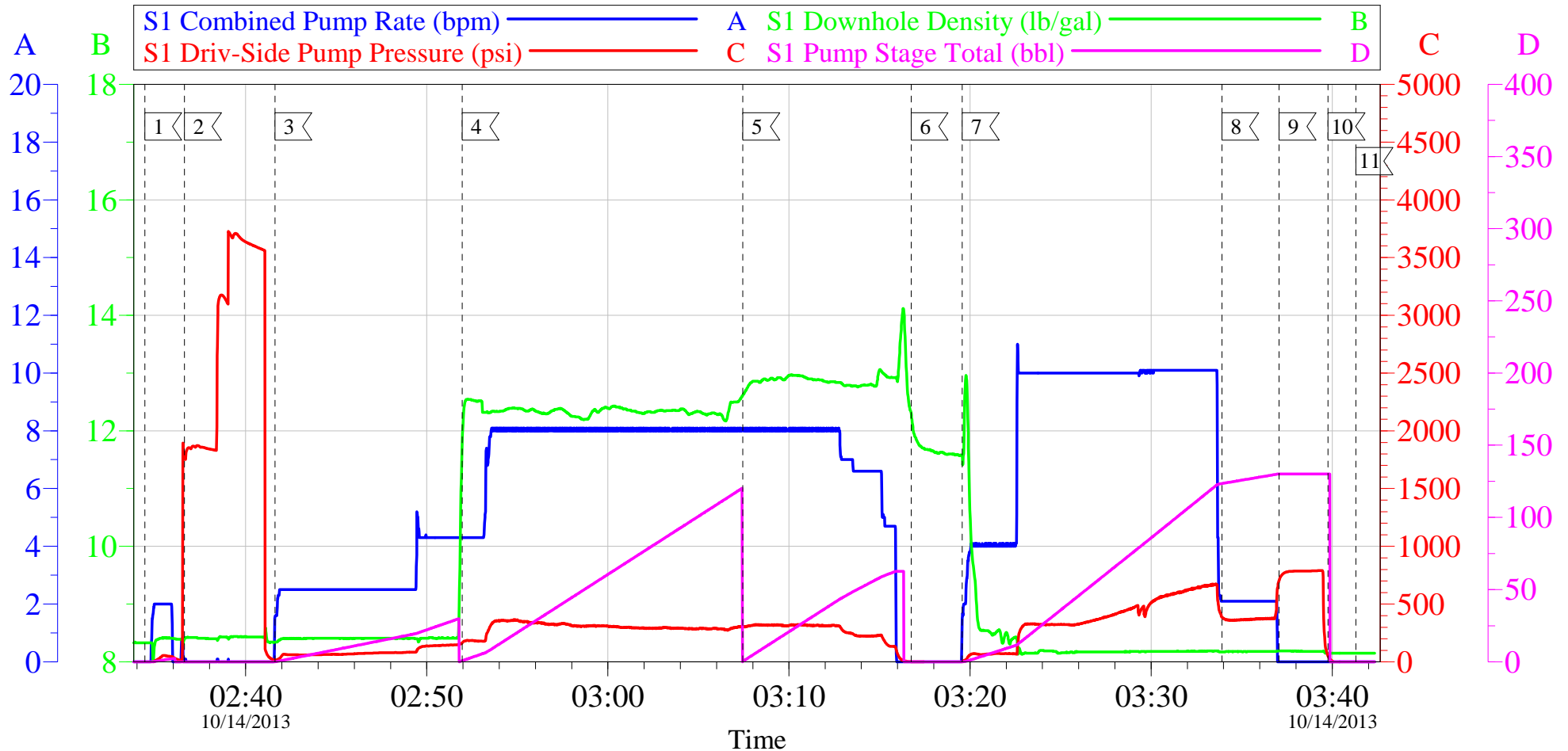
Stage/Plug #: 1									
Fluid #	Stage Type	Fluid Name	Qty	Qty uom	Mixing Density lbm/gal	Yield ft3/sk	Mix Fluid Gal/sk	Rate bbl/min	Total Mix Fluid Gal/sk

Stage/Plug #: 1									
Fluid #	Stage Type	Fluid Name	Qty	Qty uom	Mixing Density lbm/gal	Yield ft3/sk	Mix Fluid Gal/sk	Rate bbl/min	Total Mix Fluid Gal/sk

Stage/Plug #: 1									
1	Fresh Water Spacer		30.00	bbl	8.33	8.33	.0	4.0	
2	VersaCem GJ1 Lead Cement	VARICEM (TM) CEMENT (452009)	275.0	sacks	12.3	2.38	13.75	8.0	13.75
	13.75 Gal	FRESH WATER							
3	VersaCemGJ1 Tail Cement	VARICEM (TM) CEMENT (452009)	175.0	sacks	12.8	2.11	11.75	8.0	11.75
	11.75 Gal	FRESH WATER							
4	Displacement Fluid		130.00	bbl	8.34	.0	.0	10.0	
Calculated Values		Pressures		Volumes					
Displacement	132	Shut In: Instant		Lost Returns	NO	Cement Slurry	182.4	Pad	
Top Of Cement	SURFACE	5 Min		Cement Returns	28	Actual Displacement	130	Treatment	
Frac Gradient		15 Min		Spacers	30	Load and Breakdown		Total Job	
Rates									
Circulating		Mixing	8	Displacement	10	Avg. Job	9		
Cement Left In Pipe	Amount	43 ft	Reason	Shoe Joint					
Frac Ring # 1 @	ID	Frac ring # 2 @	ID	Frac Ring # 3 @	ID	Frac Ring # 4 @	ID		
The Information Stated Herein Is Correct				Customer Representative Signature					

# WPX ENERGY PA 531-21

## 9 5/8" SURFACE



Local Event Log			
Intersection		SDPP	Intersection
1 START JOB	02:34:26	-4.696	2 TEST LINES
4 PUMP LEAD CEMENT	02:51:58	165.6	5 PUMP TAIL CEMENT
7 PUMP DISPLACEMENT	03:19:34	1.380	8 SLOW RATE
10 CHECK FLOATS	03:39:46	51.50	11 END JOB
			3 PUMP H2O SPACER
			6 DROP TOP PLUG
			9 LAND PLUG

Customer: WPX ENERGY	Job Date: 14-Oct-2013	Sales Order #: 900818049
Well Description: PA 531-21	Job Type: 9 5/8" SURFACE	ADC Used: YES
Supervisor: BRANDON REEVES	Company Rep: RON TOWERS	Elite/Operator: 7/ADAM ANDERSON

# HALLIBURTON

## Water Analysis Report

Company: WPX  
Submitted by: BRANDON REEVES  
Attention: J. TROUT/C.MARTINEZ  
Lease: PA  
Well #: 531-21

Date: 10/13/2013  
Date Rec.: 10/13/2013  
S.O.#: 900818049  
Job Type: SURFACE

Specific Gravity	<i>MAX</i>	<b>1</b>
pH	<i>8</i>	<b>7</b>
Potassium (K)	<i>5000</i>	<b>250</b> Mg / L
Calcium (Ca)	<i>500</i>	<b>120</b> Mg / L
Iron (FE2)	<i>300</i>	<b>0</b> Mg / L
Chlorides (Cl)	<i>3000</i>	<b>0</b> Mg / L
Sulfates (SO <sub>4</sub> )	<i>1500</i>	<b>UNDER 200</b> Mg / L
Chlorine (Cl <sub>2</sub> )		<b>0</b> Mg / L
Temp	<i>40-80</i>	<b>54</b> Deg
Total Dissolved Solids		<b>410</b> Mg / L

Respectfully: BRANDON REEVES

Title: CEMENTING SUPERVISOR

Location: Grand Junction, CO

NOTICE:

This report is limited to the described sample tested. Any person using or relying on this report agrees that Halliburton shall not be liable for any loss or damage whether due to act or omission resulting from such report or its

<b>Sales Order #:</b> 900818049	<b>Line Item:</b> 10	<b>Survey Conducted Date:</b> 10/14/2013
<b>Customer:</b> WPX ENERGY ROCKY MOUNTAIN LLC-EBUS		<b>Job Type (BOM):</b> CMT SURFACE CASING BOM
<b>Customer Representative:</b> RON TOWERS		<b>API / UWI: (leave blank if unknown)</b> 05-045-22026
<b>Well Name:</b> PA		<b>Well Number:</b> 531-21
<b>Well Type:</b> Development Well	<b>Well Country:</b> United States of America	
<b>H2S Present:</b>	<b>Well State:</b> Colorado	<b>Well County:</b> Garfield

Dear Customer,

We hope that you were satisfied with the service quality of this job performed by Halliburton. It is the aim of our management and service personnel to deliver equipment and service of a standard unmatched in the service sector of the energy industry.

Please take the time to let us know if our performance met with your satisfaction. Please be as critical as possible to ensure we constantly improve our service. Your comments are of great value to us and are intended for the exclusive use of Halliburton.

### CUSTOMER SATISFACTION SURVEY

CATEGORY	CUSTOMER SATISFACTION RESPONSE	
Survey Conducted Date	The date the survey was conducted	10/14/2013
Survey Interviewer	The survey interviewer is the person who initiated the survey.	BRANDON REEVES (HBT9414)
Customer Participation	Did the customer participate in this survey? (Y/N)	Yes
Customer Representative	Enter the Customer representative name	RON TOWERS
HSE	Was our HSE performance satisfactory? Circle Y or N	Yes
Equipment	Were you satisfied with our Equipment? Circle Y or N	Yes
Personnel	Were you satisfied with our people? Circle Y or N	Yes
Customer Comment	Customer's Comment	

<b>CUSTOMER SIGNATURE</b>
---------------------------



<b>Sales Order #:</b> 900818049	<b>Line Item:</b> 10	<b>Survey Conducted Date:</b> 10/14/2013
<b>Customer:</b> WPX ENERGY ROCKY MOUNTAIN LLC-EBUS		<b>Job Type (BOM):</b> CMT SURFACE CASING BOM
<b>Customer Representative:</b> RON TOWERS		<b>API / UWI: (leave blank if unknown)</b> 05-045-22026
<b>Well Name:</b> PA		<b>Well Number:</b> 531-21
<b>Well Type:</b> Development Well	<b>Well Country:</b> United States of America	
<b>H2S Present:</b>	<b>Well State:</b> Colorado	<b>Well County:</b> Garfield

### KEY PERFORMANCE INDICATORS

General	
<b>Survey Conducted Date</b> The date the survey was conducted	10/14/2013

Cementing KPI Survey	
<b>Type of Job</b> Select the type of job. (Cementing or Non-Cementing)	0
<b>Select the Maximum Deviation range for this Job</b> What is the highest deviation for the job you just completed? This may not be the maximum well deviation.	Vertical
<b>Total Operating Time (hours)</b> Total Operating Hours Including Rig-up, Pumping, Rig-down. Enter in decimal format.	2
<b>HSE Incident, Accident, Injury</b> HSE Incident, Accident, Injury. This should be recordable incidents only.	No
<b>Was the job purpose achieved?</b> Was the job delivered correctly as per customer agreed design?	Yes
<b>Operating Hours (Pumping Hours)</b> Total number of hours pumping fluid on this job. Enter in decimal format.	1
<b>Customer Non-Productive Rig Time (hrs)</b> Lost time due to Halliburton in the start, execution, or completion of an ordered service or product, or delays in a follow-on service. Enter in decimal format. 0 if none.	0
<b>Type of Rig Classification Job Was Performed</b> Type Of Rig (classification) Job Was Performed On	Drilling Rig (Portable)
<b>Number Of JSAs Performed</b> Number Of Jsas Performed	6
<b>Number of Unplanned Shutdowns</b> Unplanned shutdown is when injection stops for any period of time.	0
<b>Was this a Primary Cement Job (Yes / No)</b>	Yes

<b>Sales Order #:</b> 900818049	<b>Line Item:</b> 10	<b>Survey Conducted Date:</b> 10/14/2013
<b>Customer:</b> WPX ENERGY ROCKY MOUNTAIN LLC-EBUS		<b>Job Type (BOM):</b> CMT SURFACE CASING BOM
<b>Customer Representative:</b> RON TOWERS		<b>API / UWI: (leave blank if unknown)</b> 05-045-22026
<b>Well Name:</b> PA		<b>Well Number:</b> 531-21
<b>Well Type:</b> Development Well	<b>Well Country:</b> United States of America	
<b>H2S Present:</b>	<b>Well State:</b> Colorado	<b>Well County:</b> Garfield

Primary Cement Job= Casing job, Liner job, or Tie-back job.	
<b>Did We Run Wiper Plugs?</b> Did We Run Top And Bottom Casing Wiper Plugs?	Top
<b>Mixing Density of Job Stayed in Designed Density Range (0-100%)</b> Density Range defined as +/- .20 ppg. Calculation: Total BBLs cement mixed at designed density divided by total BBLs of cement multiplied by 100	95
<b>Was Automated Density Control Used?</b> Was Automated Density Control (ADC) Used ?	Yes
<b>Pump Rate (percent) of Job Stayed At Designed Pump Rate</b> Pump Rate range defined as +/- 1bbl/min. Calculation: Total BBLs of fluid pumped at the designed rate divided by Total BBLs of fluid pumped, multiplied by 100	98
<b>Nbr of Remedial Sqz Jobs Rqd - Competition</b> Number Of Remedial Squeeze Jobs Required After Primary Job Performed By Competition	0
<b>Nbr of Remedial Plug Jobs Rqd - HES</b> Number Of Remedial Plug Jobs Needed After Primary Plug Pumped By HES	0
<b>Nbr of Remedial Sqz Jobs Rqd - HES</b> Number Of Remedial Squeeze Jobs Required After Primary Job Performed By HES	0