

LOG created using L PLOT VH Version 3.0, October 16, 2013, Copyright (C) 1999-2009 Pason Systems Corp.

OPERATOR:	NOBLE ENERGY INC.
WELL:	CROW CREEK STATE AC36-78HN
LOCATION:	SWSW SEC36 T7N R63W
COUNTY:	WELD
STATE:	COLORADO
SPOT:	270' FSL 263' FWL
ELEVATION:	4,774' GL, 4,790' KB
FIELD:	WATTENBERG
SPUD DATE:	10/8/13
TD DATE:	10/15/13
DATES LOGGED:	10/9/13 - 10/15/13
DEPTHS LOGGED:	611'- 10974'
GEOLOGISTS:	GARY MYERS, JESSICA SILVEY
DRILLING FLUID:	LSND
DRILLING RIG:	PRECISION 828
API:	05-123-37275
LOG TYPE:	VERTICAL
SCALE:	1:240 (5 inches per 100 feet)
REMARKS:	WELLSITE GEOLOGICAL SERVICES PROVIDED BY COLUMBINE LOGGING INC.

**LOG CONTINUES ON FILE: Crow Creek State AC36-78HN Horiz.lplot**

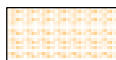
## LITHOLOGIES



## Sandstone



### Shaly Sandstone



## Shaly Siltstone



Silty Shale

## ENGINEERING SYMBOLS



## Connection



Connection Gas



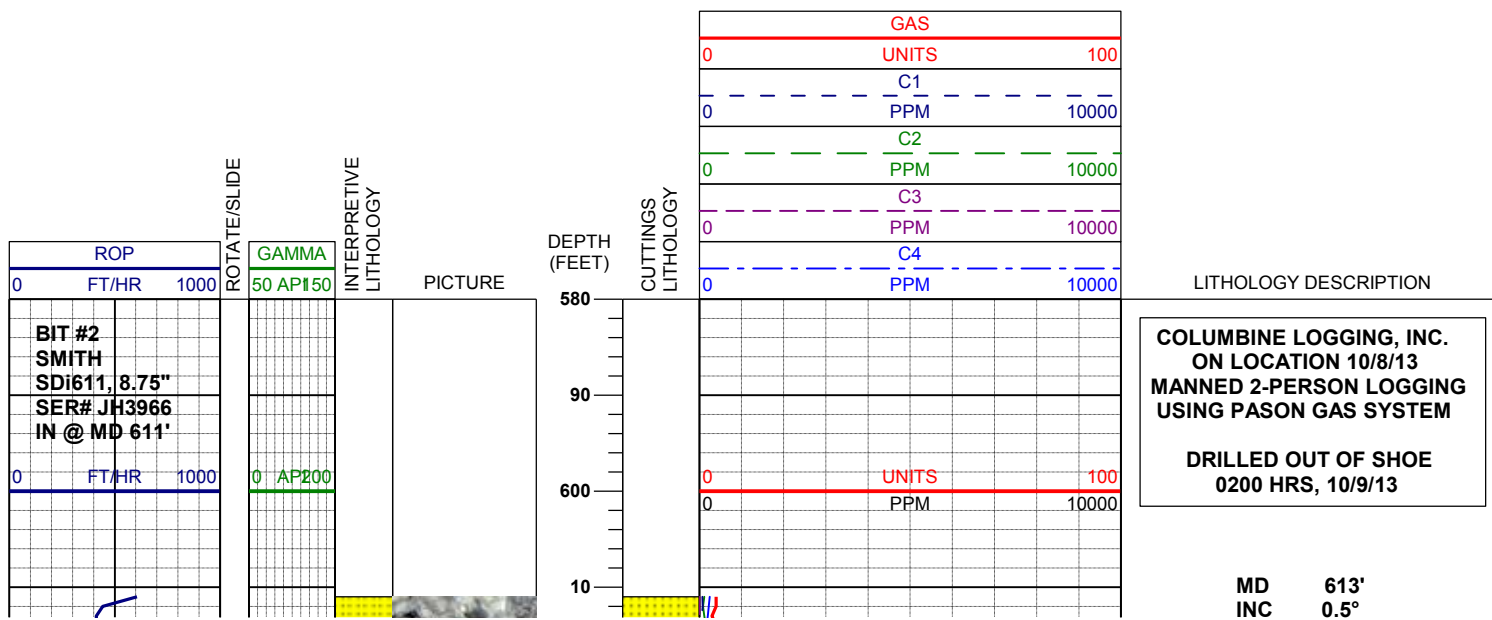
Arrow

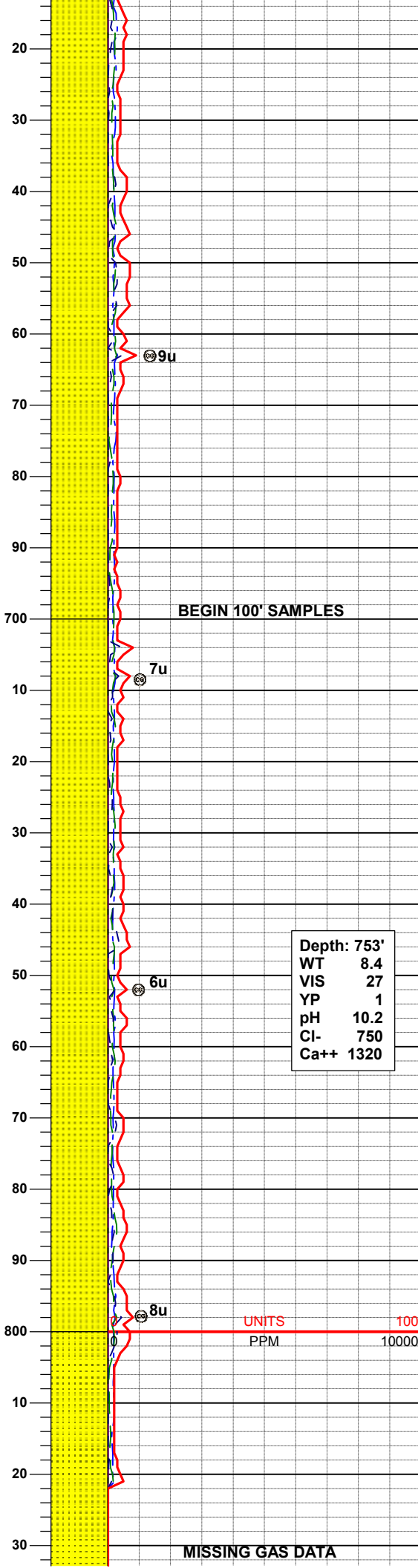
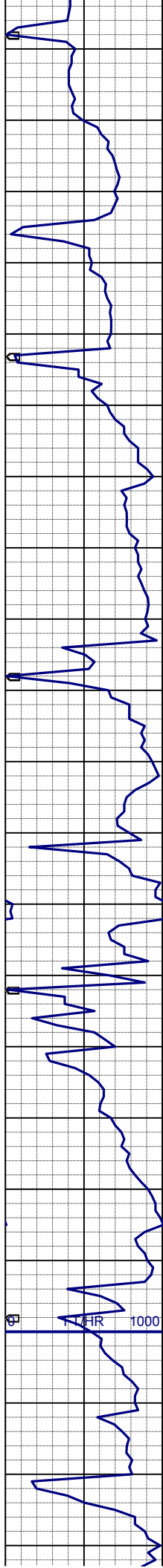


## Midnight Depth



Arrow





AZI 142.7°  
TVD 613.0'

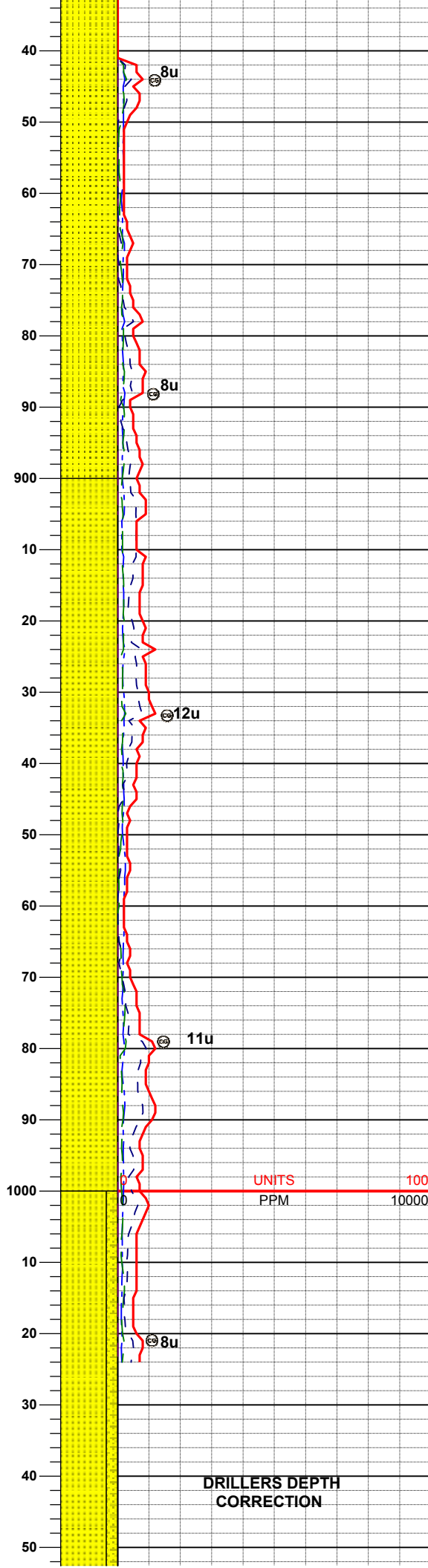
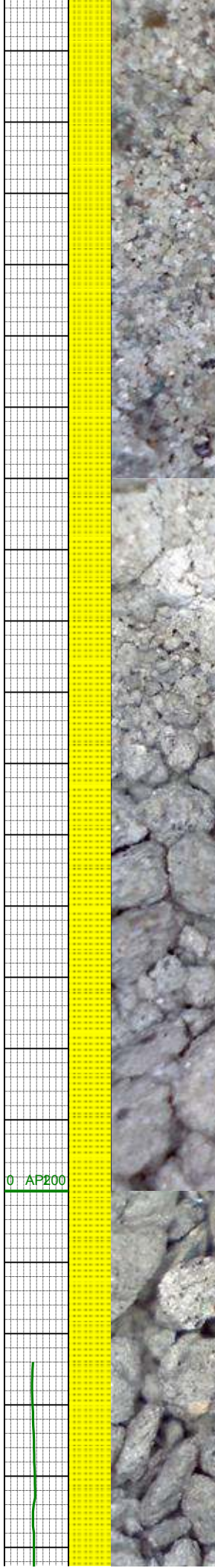
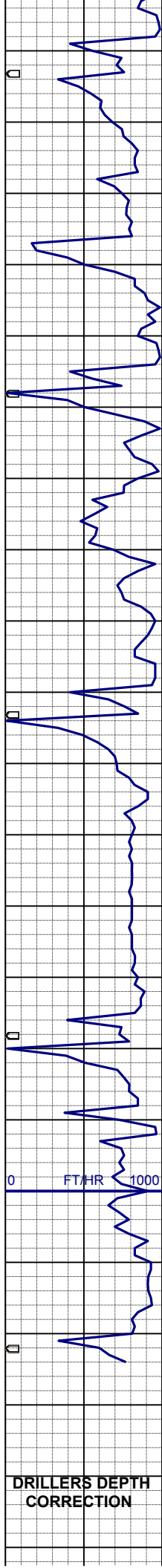
SS: gy- mgy, m-fgr, blkyl-sbblky,  
sbrndd-sbang, mod srt, vsft-sft, arg  
mtx, non calc, sl mica, tr sltst

MD 703'  
INC 0.6°  
AZI 172.2°  
TVD 703.0'

SS: wh-gy- mgy, m-fgr, blkyl-sbblky,  
sbrndd-sbang, mod srt, vsft-sft, arg  
mtx, non calc, sl mica, tr sltst

MD 793'  
INC 0.6°  
AZI 147.9°  
TVD 793.0'

UNITS 100  
PPM 10000



SS: wh- gy- mgy, m- gr, blk- sbbly, sbrndd- sbang, mod srt, vsft- s ft, arg mt, non calc, sl mica, tr sltst

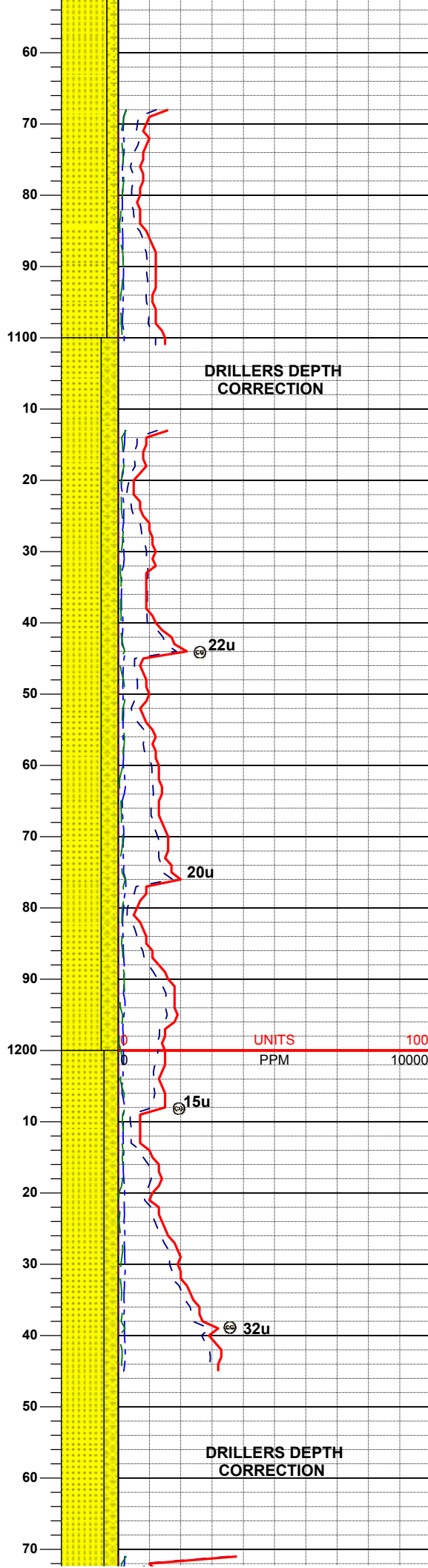
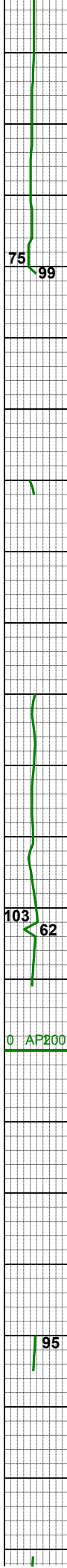
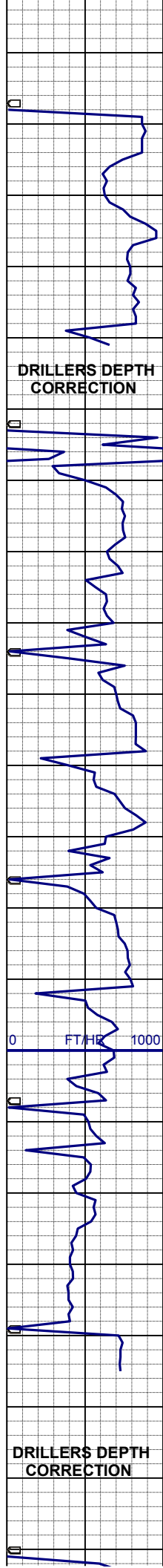
MD 883'  
INC 0.6°  
AZI 174.7°  
TVD 883.0

SS: wh- mgy, pred clr qtz, mgr, blk- sbbly, rndd- sbrndd, wsrt, vsft, p cmt, sil mt, non calc, sl mica, tr glau, tr sltst

MD 972'  
INC 0.9°  
AZI 165.5°  
TVD 972.0'

SS: - SHYSS: lt- mgy, sme wh, trns- op, sme clr, s&p ip, vf- mgr, sbbly, p srt, sft, arg- sil mt, sl calc, sl mica, tr





glau

MD 1062'  
INC 0.7°  
AZI 150.4°  
TVD 1062.0'

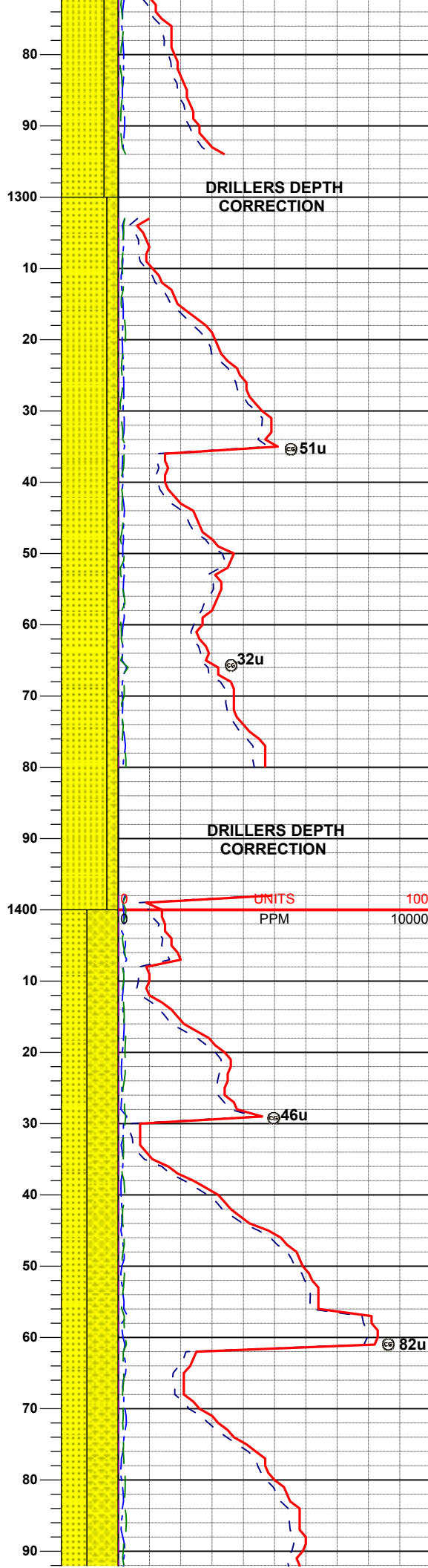
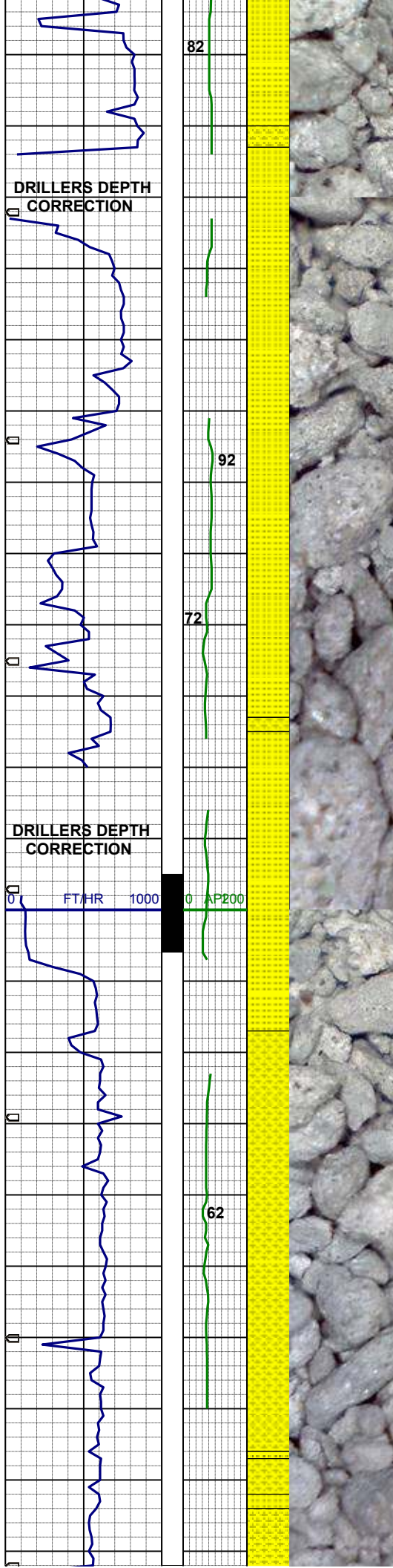
SS: - SHYSS: lt- mgy, sme wh, trnsl-  
op, sme clr, s&p ip, vf- mgr, sbblky, p  
srt, sft, arg-sil mtx, sl calc, sl mica, tr  
glau

MD 1157'  
INC 0.4°  
AZI 128.9°  
TVD 1157.0'

UNITS 100  
PPM 10000

SS: - SHYSS: lt- mgy, sme wh, trnsl-  
op, sme clr, s&p ip, vf- mgr, sbblky, p  
srt, sft, arg-sil mtx, sl calc, sl mica,  
occ glau

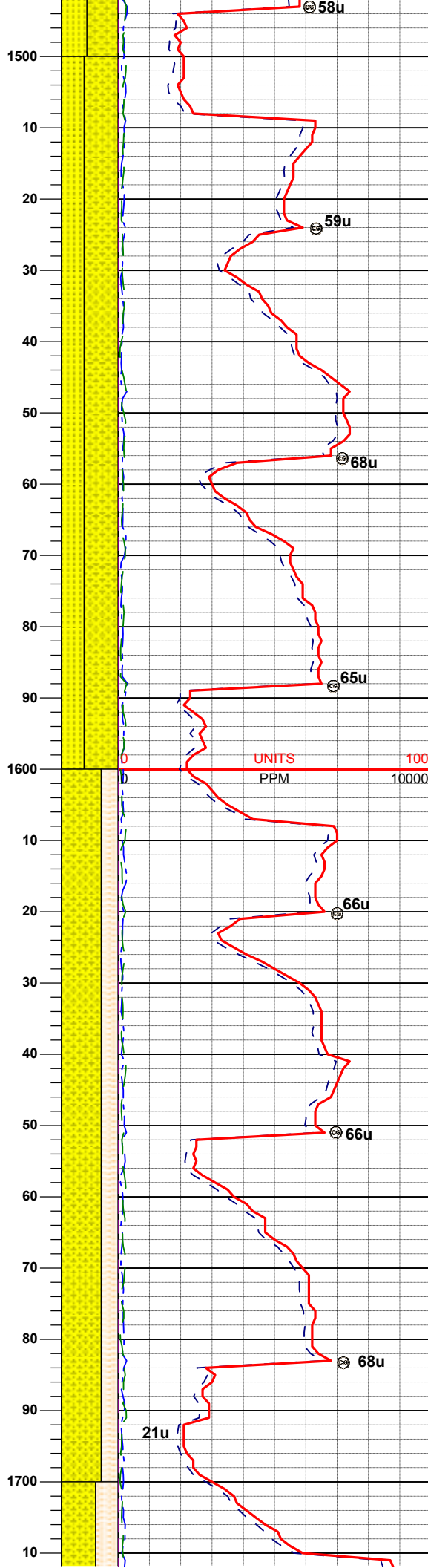
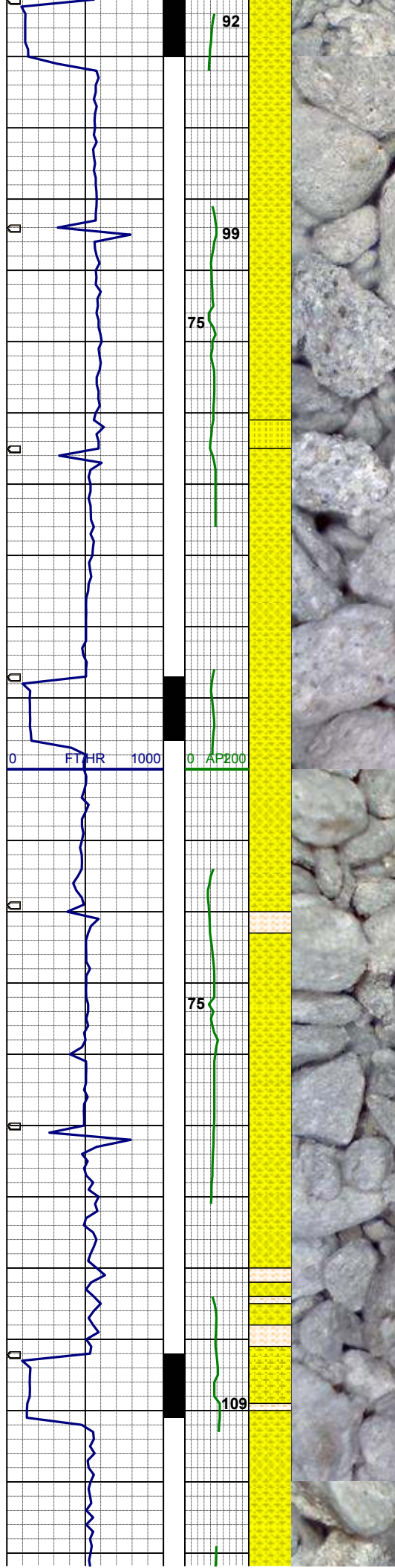
MD 1252'  
INC 0.5°  
AZI 131.6°  
TVD 1252.0'



MD 1347'  
INC 0.6°  
AZI 163.4°  
TVD 1346.9'  
SS: - SHYSS: lt- mgy, sme wh, trnsl-  
op, sme clr, s&p ip, vf- mgr, sbblky, p  
srt, sft, arg-sil mtx, sl calc, sl mica,  
occ glau

MD 1442'  
INC 1.8°  
AZI 142.1°  
TVD 1441.9'  
SHYSS: - SS: lt- mgy, sme wh, trnsl-  
op, sme clr, s&p ip, vf- mgr, sbblky, p  
srt, sft, arg-sil mtx, sl calc, sl mica





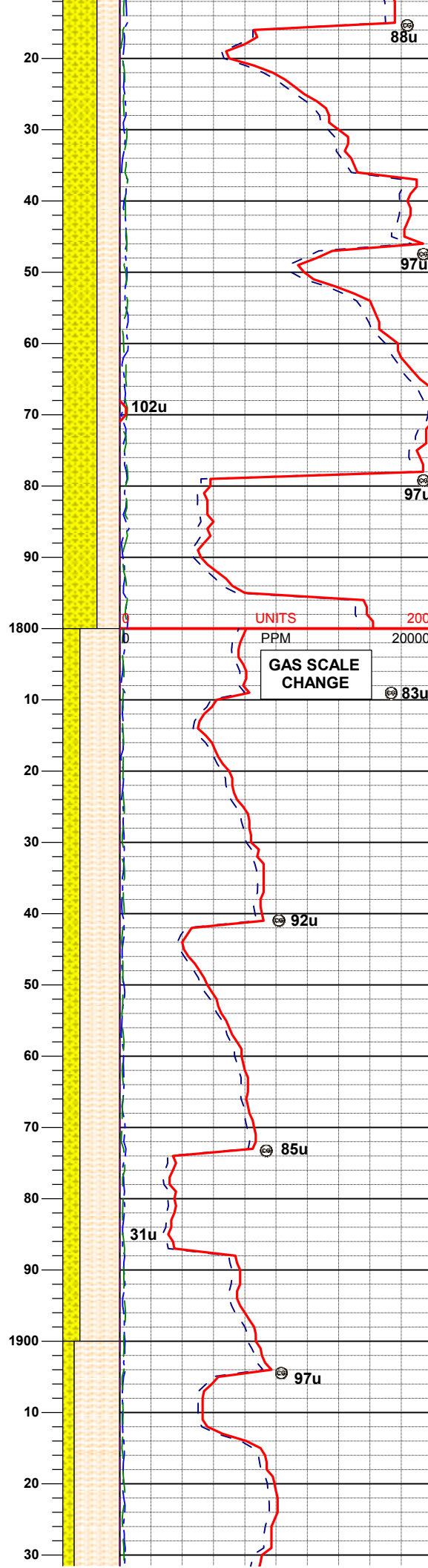
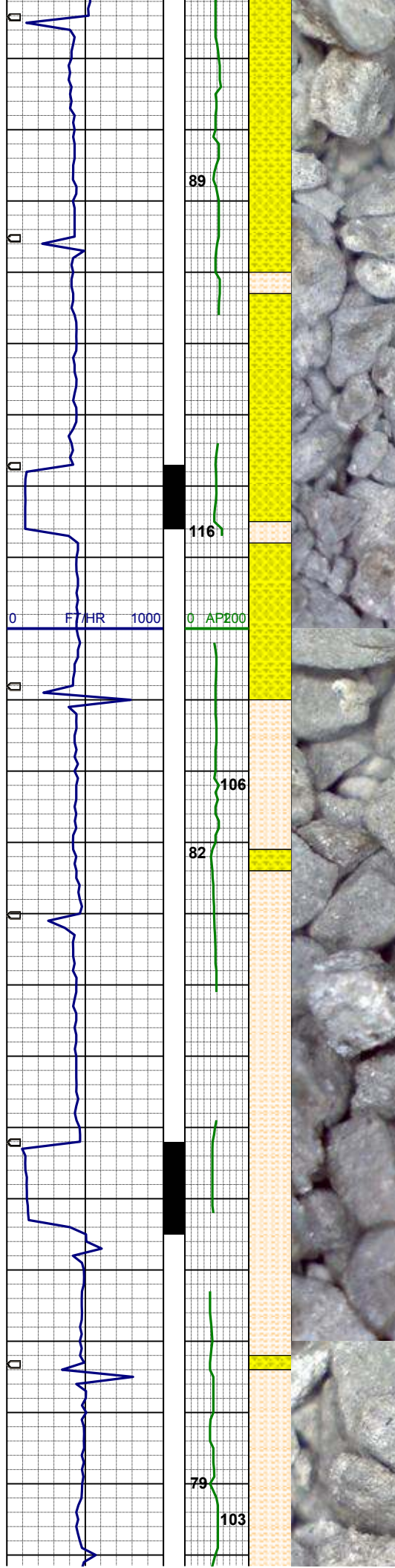
WT 8.5 / VIS 25

MD 1537'  
INC 3.3°  
AZI 115.2°  
TVD 1536.8'

SHYSS: - SS: lt-mgy, sme wh, trnsi-  
op, sme clr, s&p ip, vf-mgr, sbblky, p  
srt, sft, arg-sil mtz, sl calc, sl mica

MD 1632'  
INC 5.2°  
AZI 107.7°  
TVD 1631.6'

SHYSS: lt-mgy, trnsi- op, vf- fgr,  
sbblky, sbplty ip mod srt, sft, pred arg  
mtz, sl calc, v sl mica, grdg- shysltst



MD 1727'  
INC 6.2°  
AZI 102.2°  
TVD 1726.1'

SHYSS: lt-mgy, trnsi-op, vf-fgr,  
sbbiky, sbply ip mod srt, sft, pred arg  
mtx, sl calc, v sl mica, grdg-shysltst

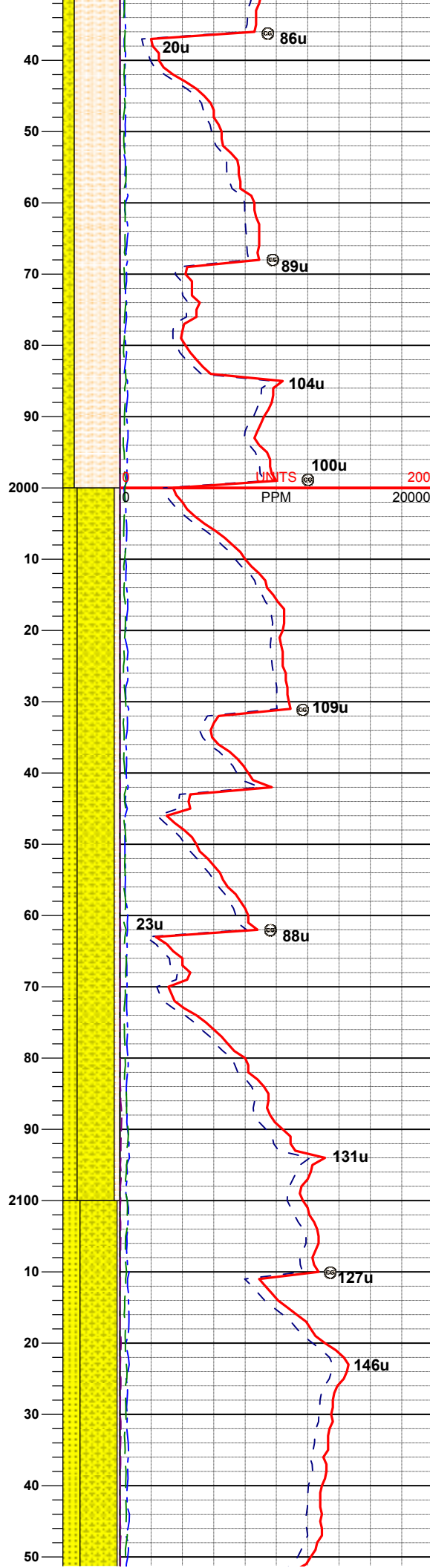
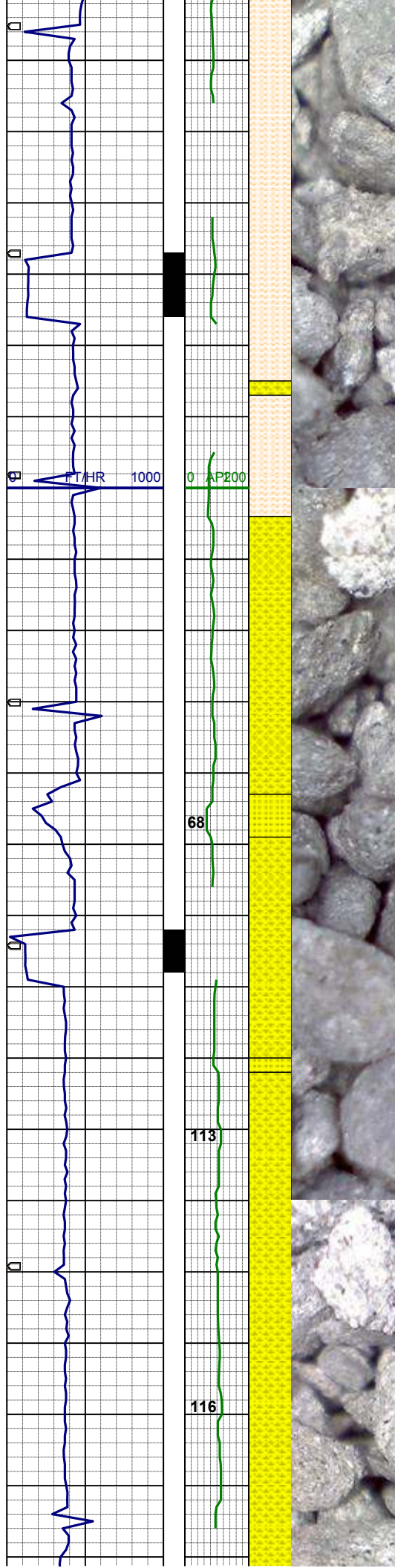
WT 8.45 / VIS 25

MD 1822'  
INC 6.7°  
AZI 105.4°  
TVD 1820.5'

SHSLTST: lt-mgy, pred sbbiky,  
modsrt, sft, arg-sl sil mtx, sdy, sl calc,  
sl mica, grdg-shyss

MD 1916'  
INC 5.9°  
AZI 122.3°  
TVD 1913.9'





SHSLTST: lt- mgy, pred sbblky, modsr, sft, arg- sl sil mt, sdy, sl calc, sl mica, grdg- shyss

MD 2014'  
INC 7.5°  
AZI 118.4°  
TVD 2011.3'

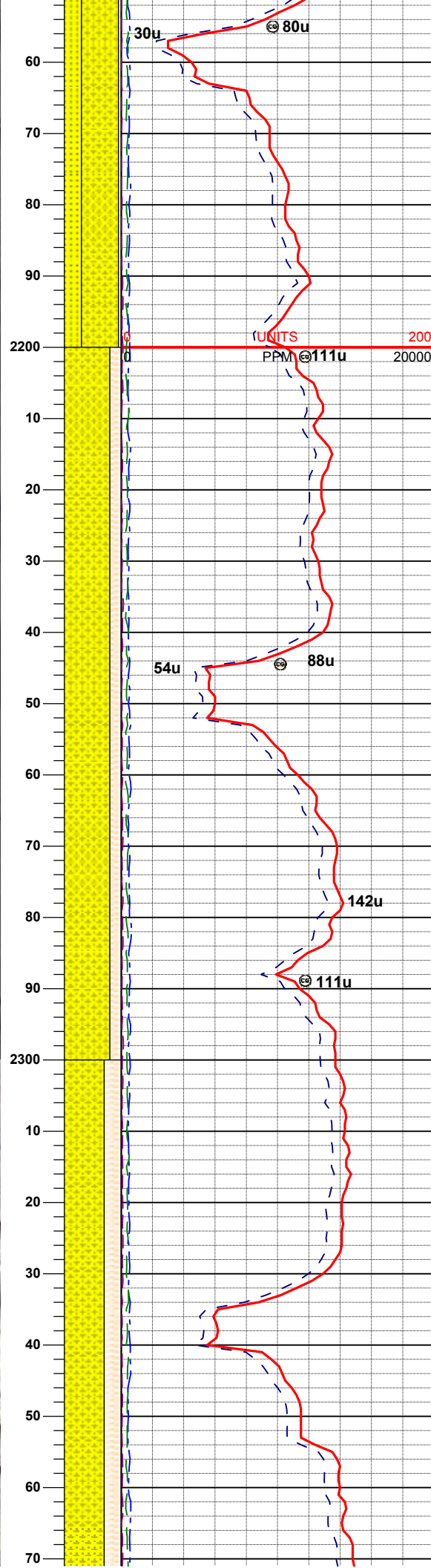
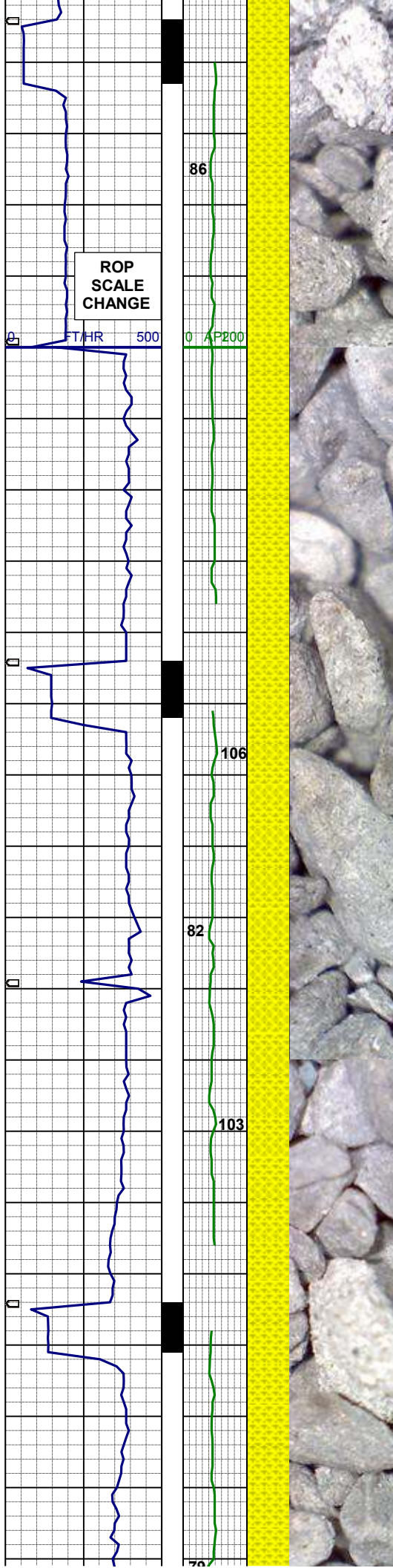
#### WT 8.5 / VIS 25

SHYSS: lt-mgy, trns- op, vf- fgr, sbblky, sbply ip mod srt, sft, pred arg mt, sl calc, v sl mica, grdg- shysltst  
SS: wh- mgy, trns- op, sme clr, mgr, blk- sbblky, sbndd- sbang gr, mod srt, sl firm, m cmt, sil mt, vs calc, sl mica, tr glau

MD 2104'  
INC 7.9°  
AZI 108.7°  
TVD 2100.5'

SHYSS: lt-mgy, trns- op, vf- fgr, sbblky, sbply ip mod srt, sft, pred arg mt, sl calc, v sl mica, grdg- shysltst





SS: wh- mgy, trnsi- op, sme clr, mgr, blk- sbblky, sbmdd- sbang gr, mod srt, sl firm, m cmt, sil mtz, vs calc, sl mica, tr glau

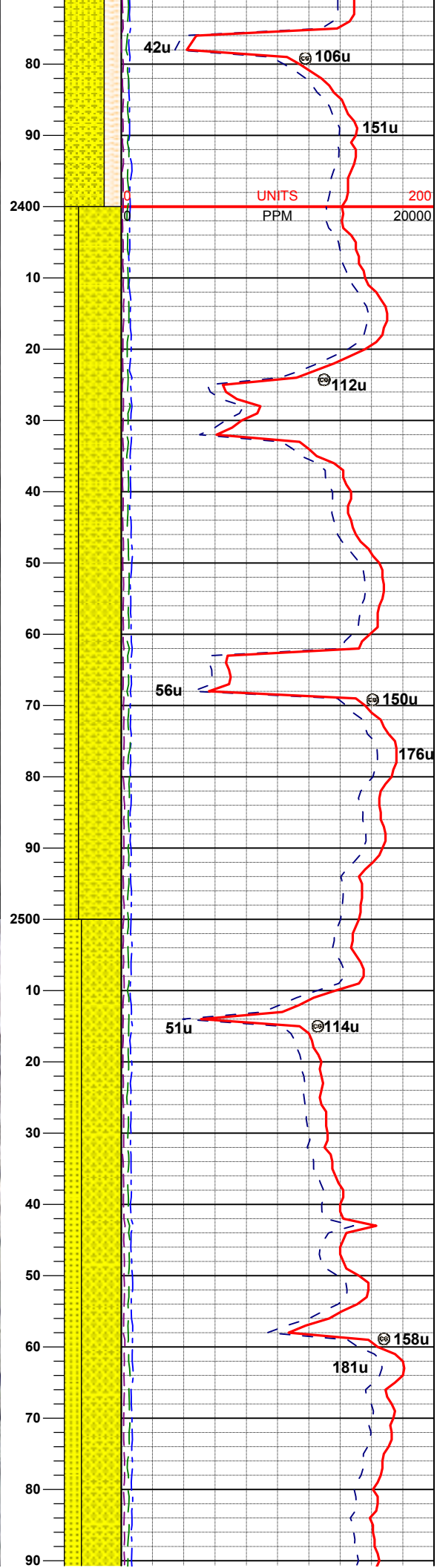
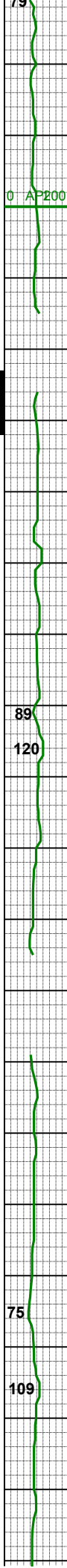
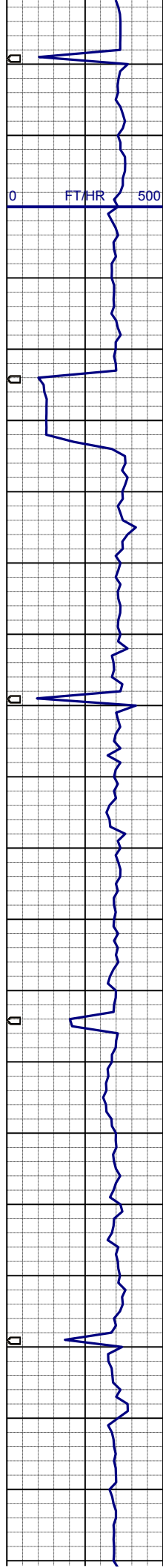
MD 2194'  
INC 8.0°  
AZI 114.5°  
TVD 2189.6'

SHYSS: lt- mgy, trnsi- op, vf- fgr, sbblky, mod srt, sft, pred arg mtz, sl calc, v sl mica, grdg- shysltst, occ mgr wh ss w/ glau

MD 2284'  
INC 7.1°  
AZI 124.6°  
TVD 2278.8'

SHYSS: lt- mgy, trnsi- op, vf- fgr, sbblky, mod srt, sft, pred arg mtz, sl calc, v sl mica, grdg- shysltst, occ mgr wh ss w/ glau

MD 2374'



INC 7.6°  
AZI 127.0°  
TVD 2368.1'

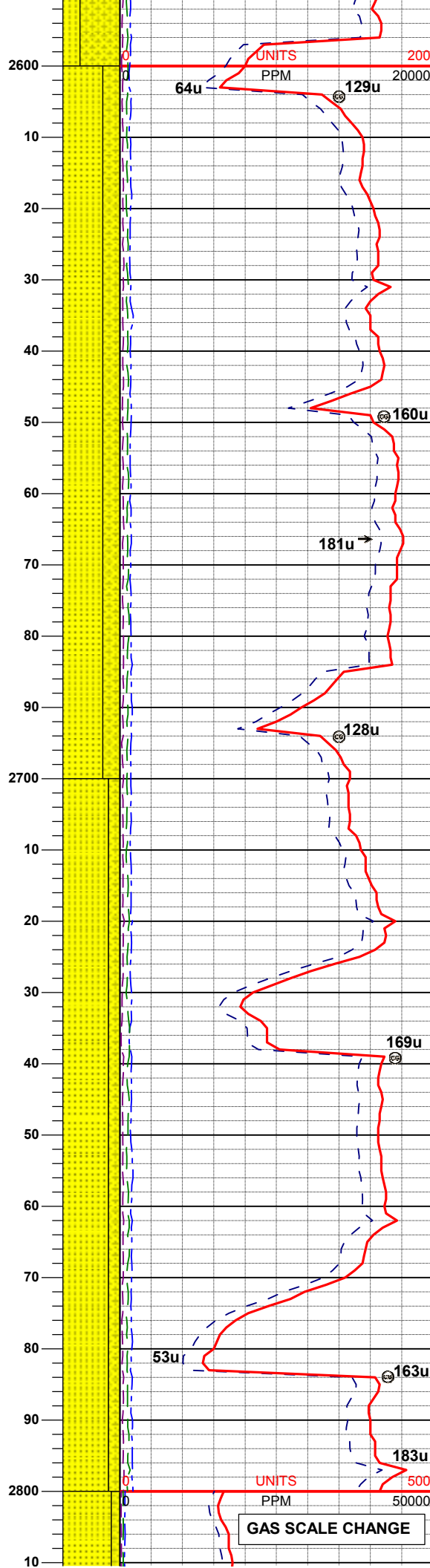
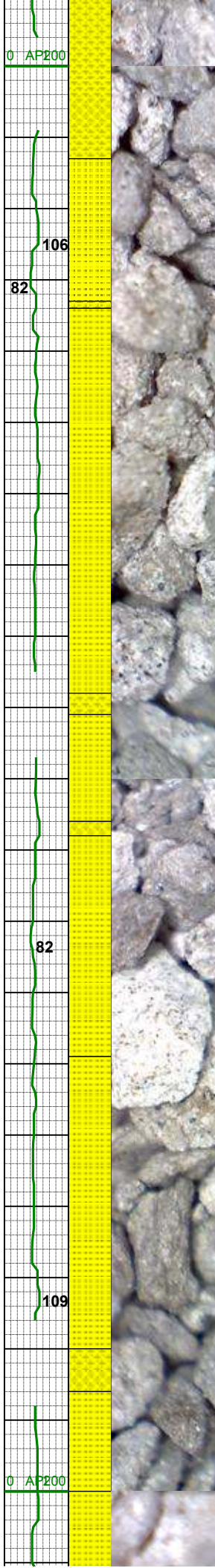
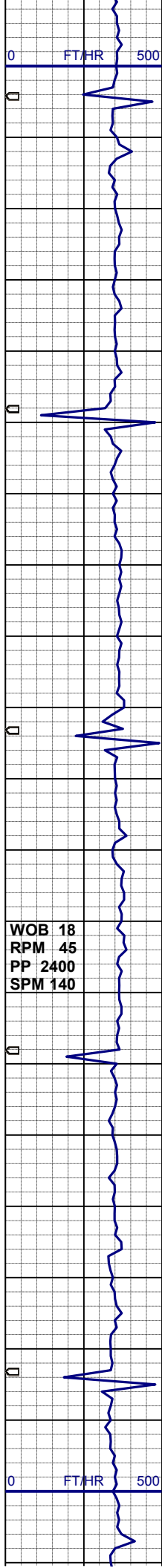
SHYSS: lt-mgy, trnsl- op, vf- fgr, sbblky, sbply ip, mod srt, sft- sl firm, pred arg mtx, sl calc, v sl mica, grdg-shysltst  
SS: wh- mgy, trnsl- op, sme clr, mgr, blk- sbblky, sbrndd- sbang gr, mod srt, sl firm, m cmt, sil- arg mtx, vs calc, sl mica

MD 2464'  
INC 7.8°  
AZI 117.7°  
TVD 2457.3'

SHYSS: lt-mgy, trnsl- op, vf- fgr, sbblky, sbply ip, mod srt, sft- sl firm, pred arg mtx, sl calc, v sl mica, grdg-shysltst  
SS: wh- mgy, trnsl- op, sme clr, mgr, blk- sbblky, sbrndd- sbang gr, mod srt, sl firm, m cmt, sil- arg mtx, vs calc, sl mica

MD 2553'  
INC 7.5°  
AZI 118.1°  
TVD 2545.5'



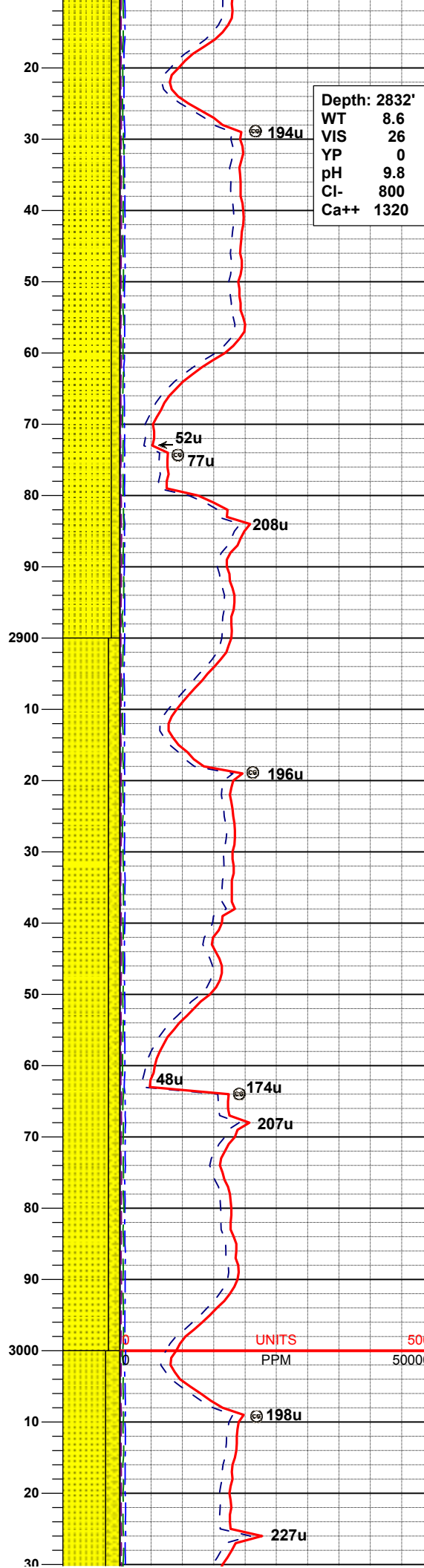
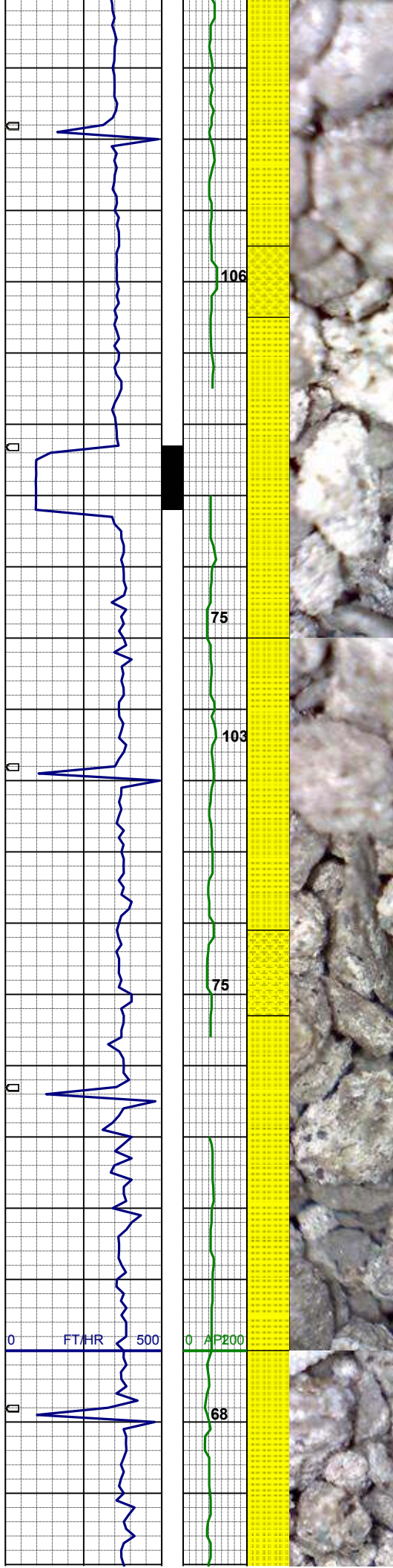


MD 2643'  
INC 7.5°  
AZI 117.9°  
TVD 2634.7'

SS: - SHYSS: lt- mgy, trnsI- op, sme  
clr, s&p ip, vf- mgr, sbbkly, p srt, sl sft-  
firm, arg-sil mtx, sl calc, slty, sl mica

MD 2733'  
INC 6.9°  
AZI 114.9°  
TVD 2724.0'

SS: - SHYSS: lt- mgy, trnsI- op, sme  
clr, s&p ip, vf- mgr, sbbkly, p srt, sl sft-  
firm, arg-sil mtx, sl calc, slty, sl mica



MD 2823'  
INC 6.6°  
AZI 112.6°  
TVD 2813.4'

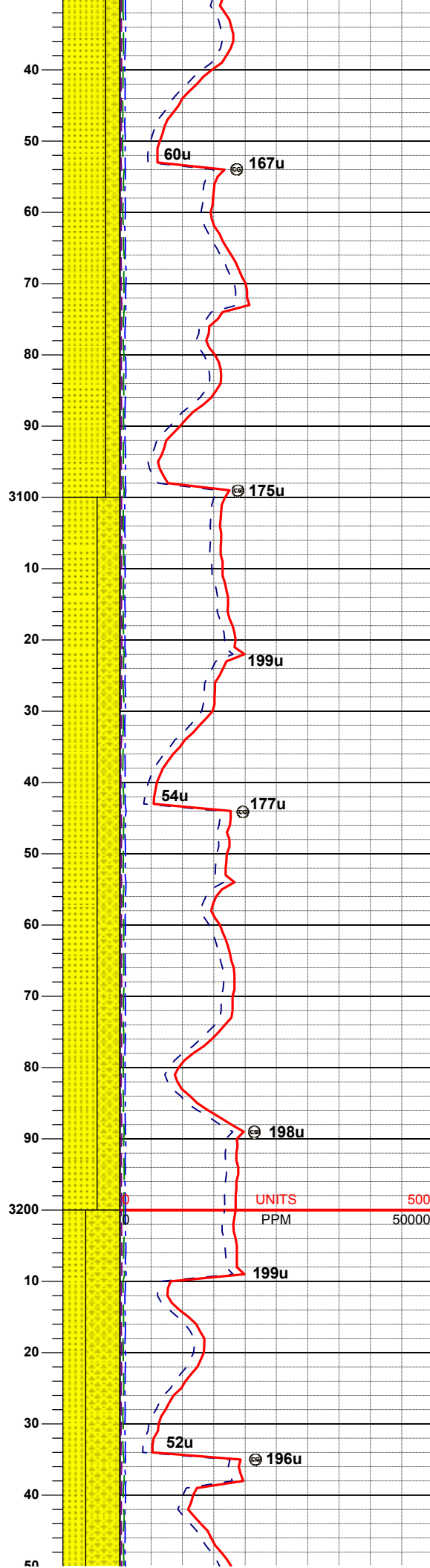
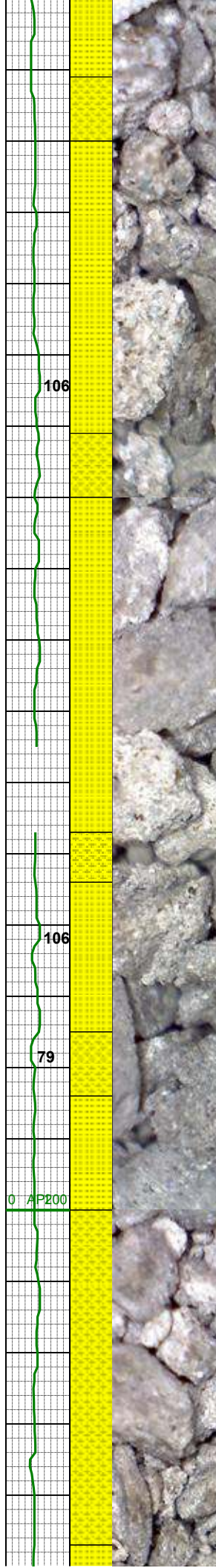
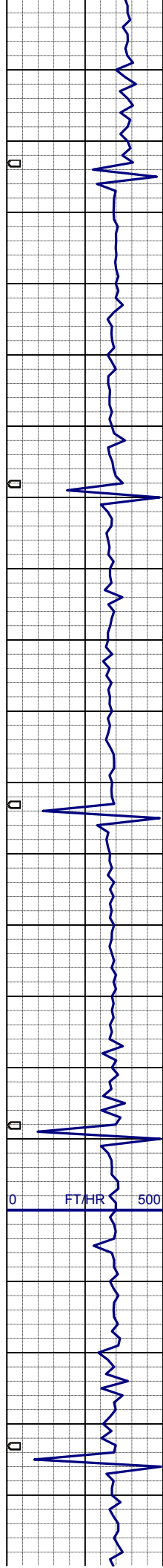
SS: wh- mgy, s&p, clr- trnsi, sme op ,  
mgr, blk- sbblky, sbrnnd- sbang gr,  
mod srt, firm, m cmt, sil- arg mtx, vs  
calc, sl mica  
SHYSS: mgy, trnsi- op, vf- fgr, sbblky-  
sbply, mod srt, sft- sl firm, pred arg  
mtx, sl calc, v sl mica, slty, grdg-  
sltysh

MD 2913'  
INC 7.7°  
AZI 119.6°  
TVD 2902.7'

SS: wh- mgy, s&p, clr- trnsi, sme op ,  
mgr, blk- sbblky, sbrnnd- sbang gr,  
mod srt, firm, m cmt, sil- arg mtx, vs  
calc, sl mica  
SHYSS: mgy, trnsi- op, vf- fgr, sbblky-  
sbply, mod srt, sft- sl firm, pred arg  
mtx, sl calc, v sl mica, slty, grdg-  
sltysh

MD 3003'  
INC 7.7°  
AZI 119.3°  
TVD 2991.9'





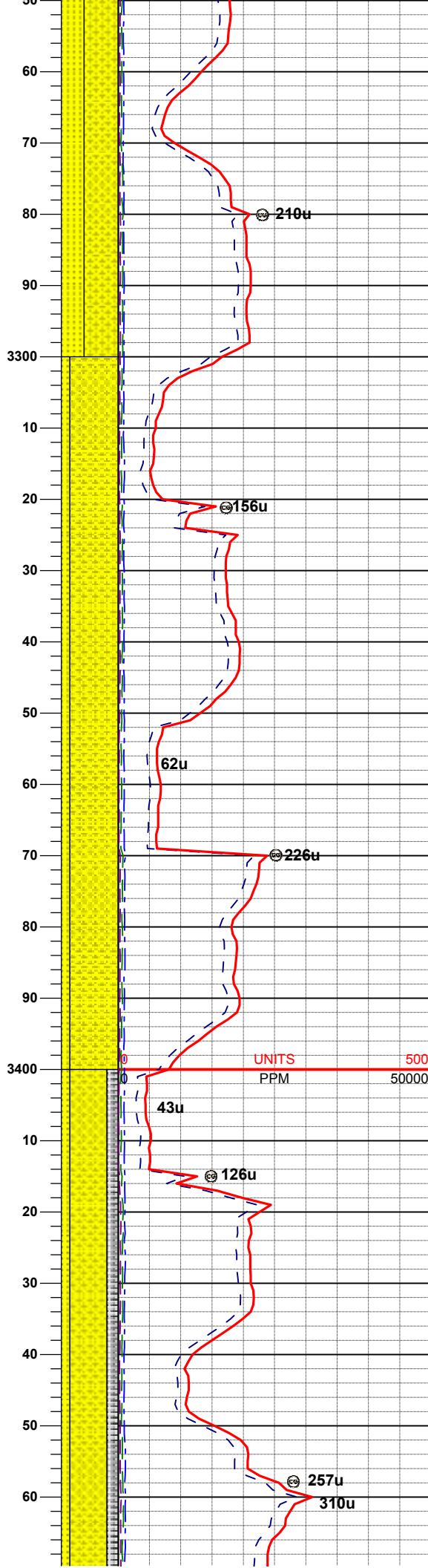
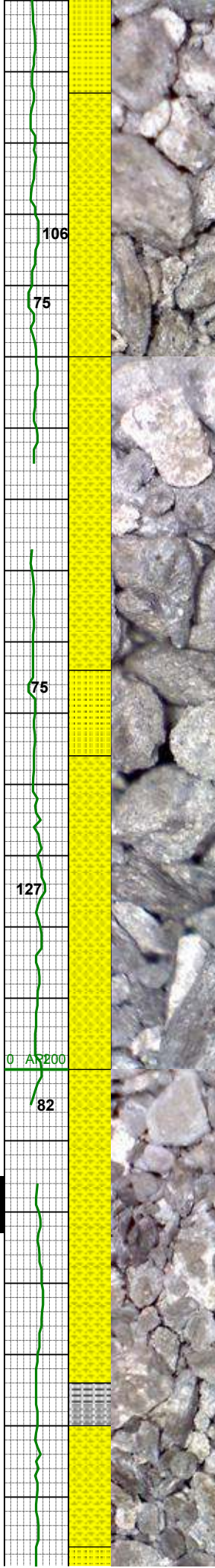
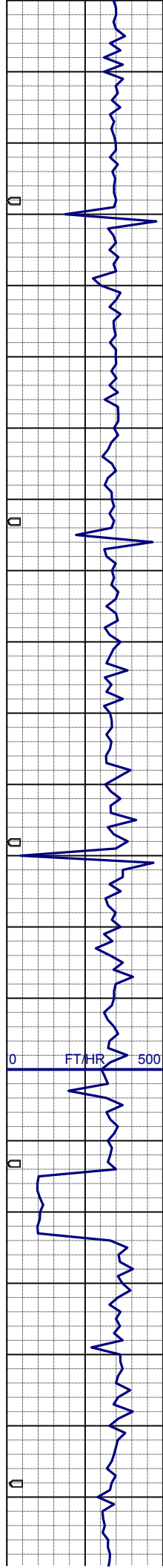
SS: wh- mgy, s&p, clr- trns, sme op ,  
mgr, blk- sbblky, sbrndd- sbang gr,  
mod srt, firm, m cmt, sil- arg mt, vs  
calc, sl mica  
SHYSS: mgy, trns- op, vf- fgr, sbblky-  
sbplty, mod srt, sft- sl firm, pred arg  
mt, sl calc, v sl mica, slty, grdg-  
sltysh

MD 3093'  
INC 7.4°  
AZI 118.9°  
TVD 3081.1'

SS: wh- mgy, s&p, clr- trns, sme op ,  
mgr, blk- sbblky, sbrndd- sbang gr,  
mod srt, firm, m cmt, sil- arg mt, vs  
calc, sl mica  
SHYSS: mgy, trns- op, vf- fgr, sbblky-  
sbplty, mod srt, sft- sl firm, pred arg  
mt, sl calc, v sl mica, slty, grdg-  
sltysh

MD 3183'  
INC 6.9°  
AZI 118.9°  
TVD 3170.4'

SS: wh- mgy, s&p, clr- trns, sme op ,  
mgr, blk- sbblky, sbrndd- sbang gr,  
mod srt, firm, m cmt, sil- arg mt, vs  
calc, sl mica



SHYSS: mgy, trns- op, vf- fgr, sbblky-  
sbply, mod srt, sft- sl firm, pred arg  
mtx, sl calc, v sl mica, slty, grdg-  
sltysh

MD 3273'  
INC 6.3°  
AZI 116.8°  
TVD 3259.8'

WT 8.60 / VIS 25

SHYSS: mgy, trns- op, vf- fgr, sbblky-  
sbply, mod srt, sft- sl firm, pred arg  
mtx, sl calc, v sl mica, slty, grdg-  
sltysh

SS: wh- mgy, s&p, clr- trns, sme op ,  
mgr, blk- sbblky, sbmdd- sbang gr,  
mod srt, firm, m cmt, sil- arg mtx, vs  
calc, sl mica

MD 3363'  
INC 5.4°  
AZI 114.9°  
TVD 3349.3'

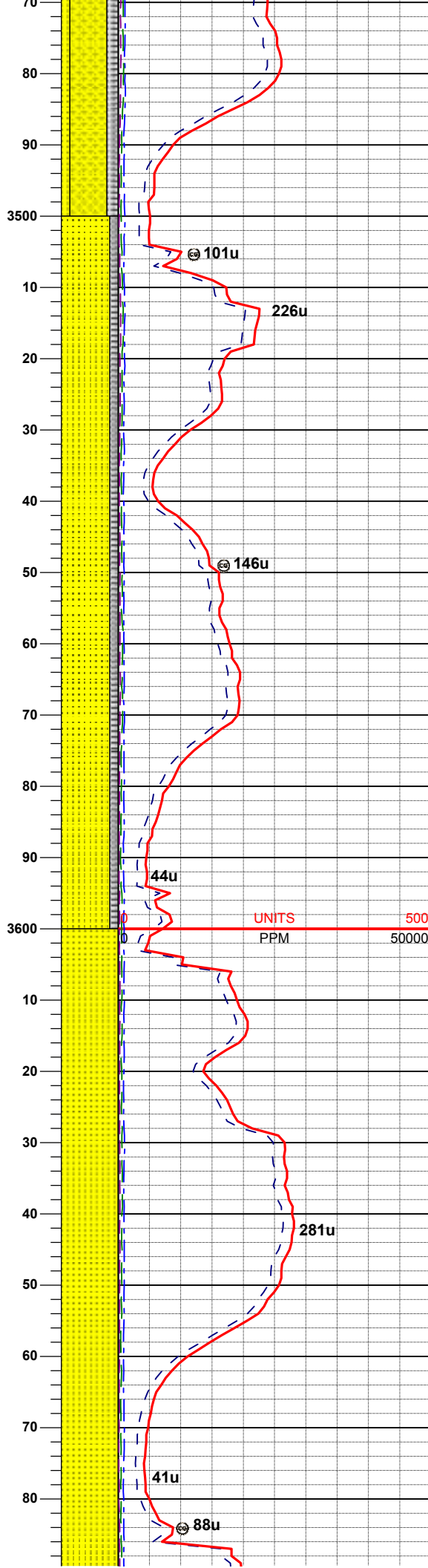
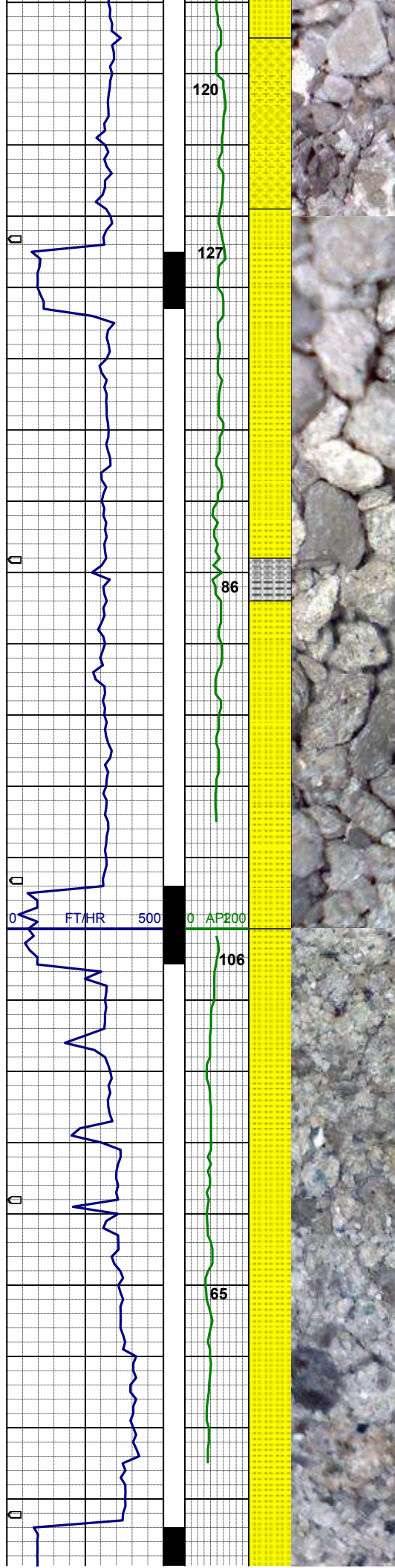
SS: wh- mgy, s&p, clr- trns, sme op ,  
mgr, blk- sbblky, sbmdd- sbang gr,  
mod srt, firm, m cmt, sil- arg mtx, vs  
calc, sl mica

SLTYSH: lt-mgy, f-vfgr, sbblky-sbply,  
occ ply, sft-firm, arg, sl calc

SHYSS: mgy, trns- op, vf- fgr, sbblky-  
sbply, mod srt, sft- sl firm, pred arg  
mtx, sl calc, v sl mica, slty, grdg-  
sltysh

MD 3453'  
INC 5.7°  
AZI 117.7°  
TVD 3438.9'





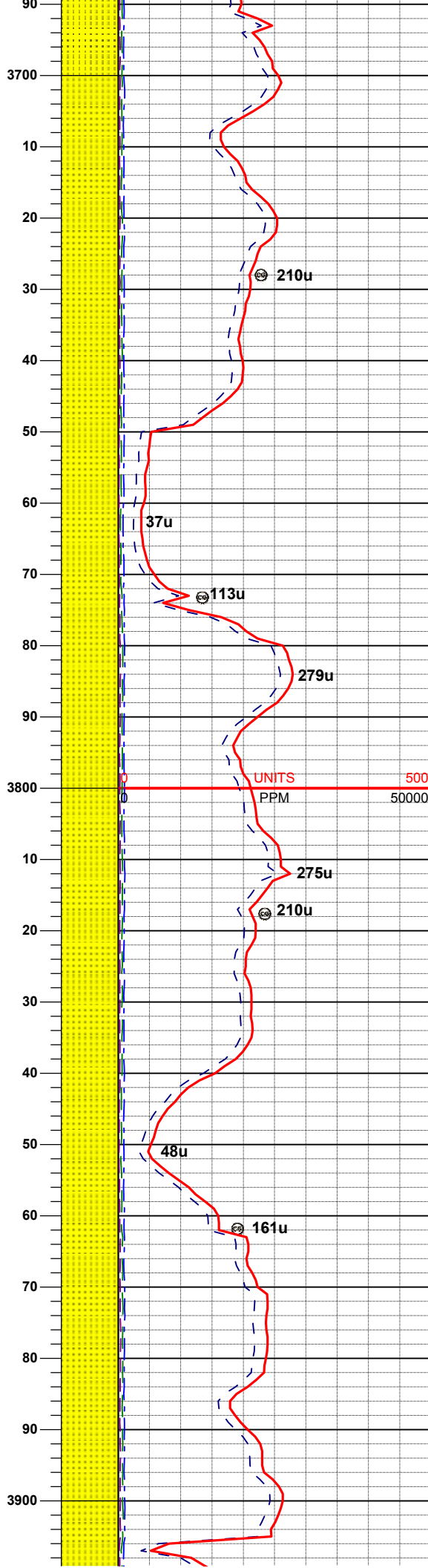
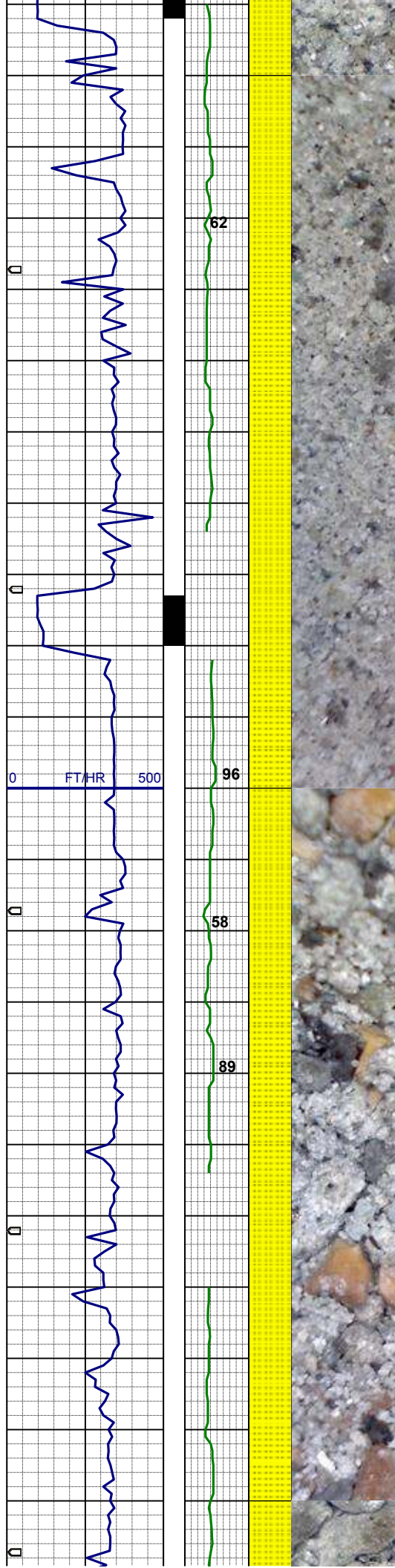
WT 8.7 / VIS 26

SS: wh- mgy, s&p, clr- trnsl, sme op ,  
mgr, blk- sbblky, sbrn-dd- sbang gr,  
mod srt, firm, m cmt, sil- arg mtz, vs  
calc, sl mica  
SLTYSH: lt-mgy, f-vfgr, sbblky-sbply,  
occ ply, sft-firm, arg, sl calc

MD 3543'  
INC 5.7°  
AZI 106.3°  
TVD 3528.4'

MD 3632'  
INC 5.9°  
AZI 101.2°  
TVD 3617.0'

SS: wh- mgy, s&p, clr- trnsl, sme op ,  
mgr, blk- sbblky, sbrn-dd- sbang gr,  
mod srt, p cmt, tr sltst sil- arg mtz, vs  
calc, sl mica, tr glau, tr pyr



WT 8.7 / VIS 26

MD 3722'  
INC 5.9°  
AZI 108.2°  
TVD 3706.5'

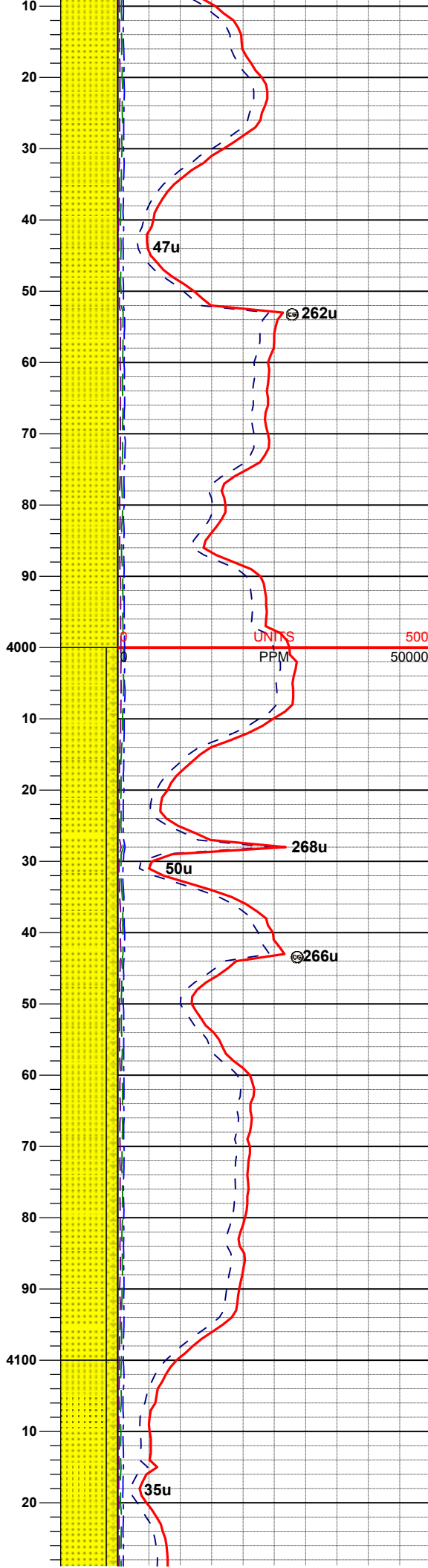
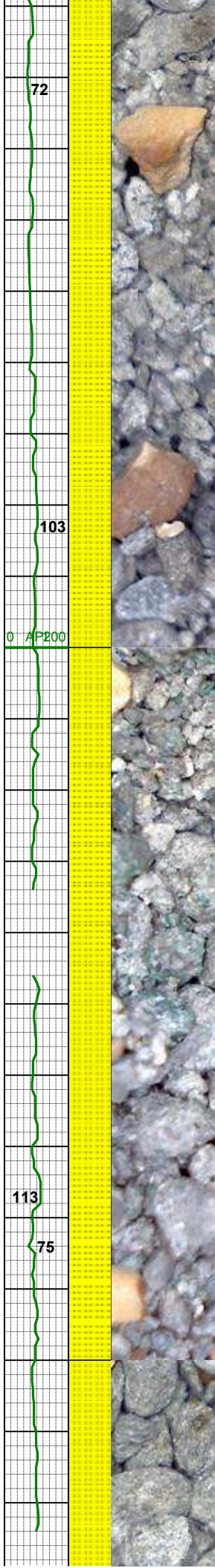
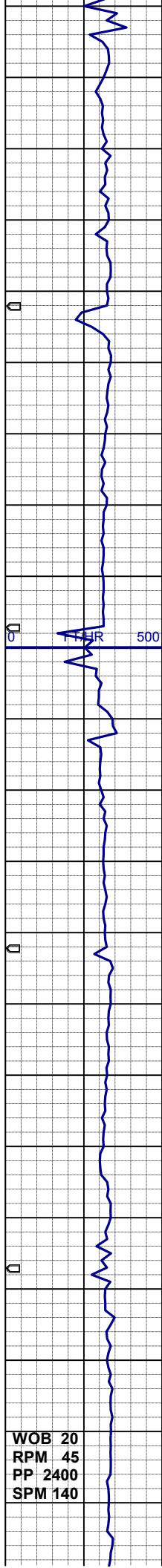
SS: wh- mgy, s&p, clr- trnsl, sme op ,  
mgr, blk- sbblky, sbrnnd- sbang gr,  
mod srt, p cmt, tr sltst, sil- arg mtz, vs  
calc, sl mica, tr glau, tr pyr

MD 3812'  
INC 6.3°  
AZI 118.4°  
TVD 3796.0'

SS: wh- mgy, s&p, clr- trnsl, sme op ,  
mgr, blk- sbblky, sbrnnd- sbang gr,  
mod srt, mod cmt, tr sltst, sil- arg mtz,  
vs calc, sl mica, tr glau, pyr clus

MD 3902'  
INC 6.5°  
AZI 117.0°  
TVD 3885.4'





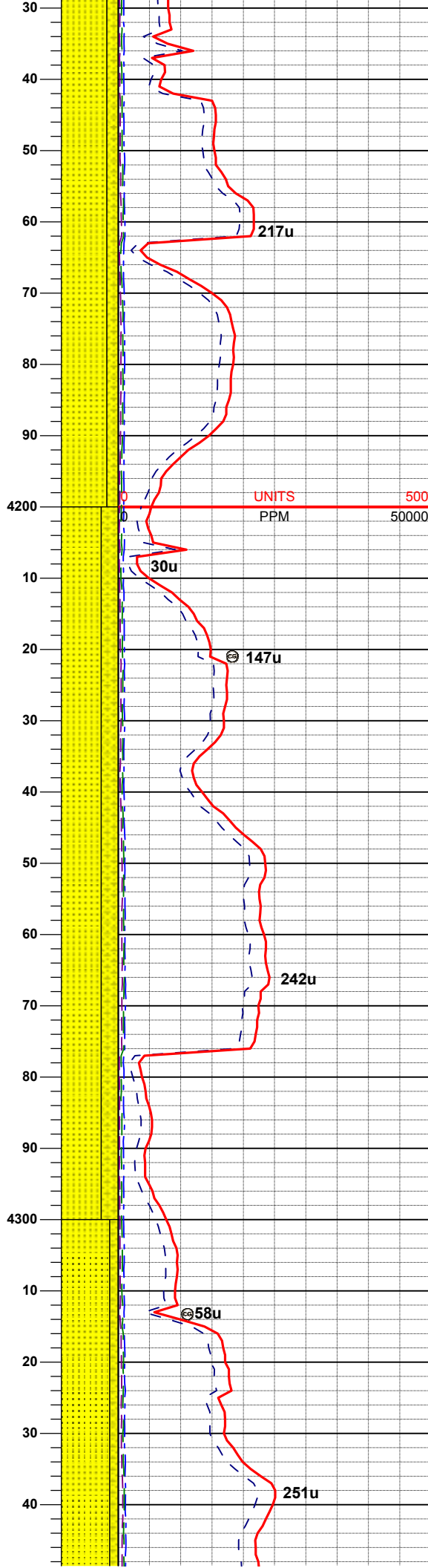
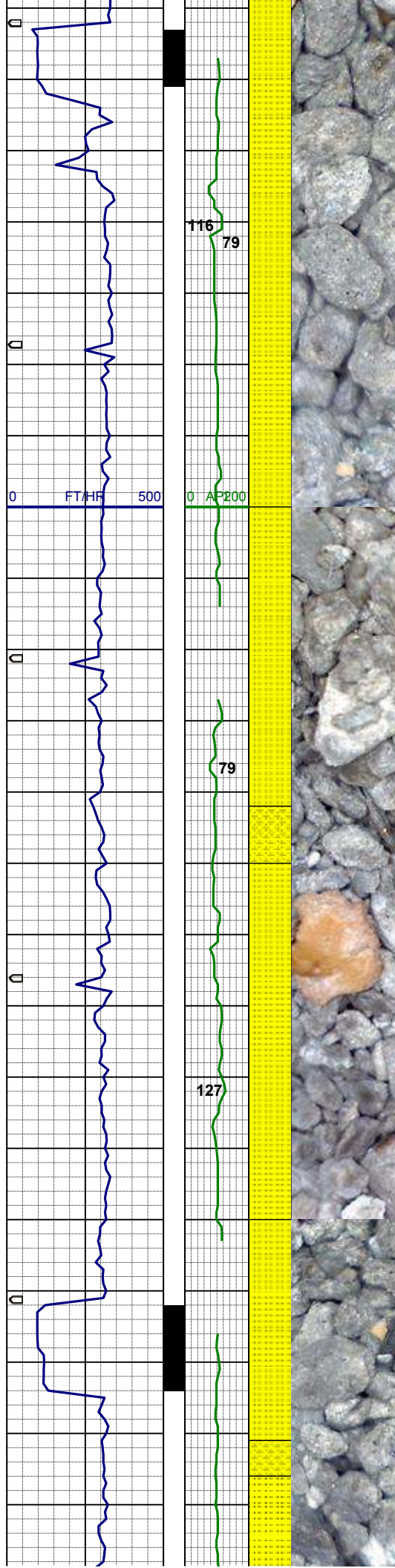
SS: gy- mgy, s&p, clr- trns, sme op ,  
mgr, blk- sbblky, sbmdd- sbang gr,  
mod srt, mod cmt, tr sltst, sil- arg mtx,  
vs calc, sl mica

MD 3992'  
INC 6.7°  
AZI 117.7°  
TVD 3974.8'

SS: gy- mgy, s&p, clr- trns, sme op ,  
mgr, blk- sbblky, sbmdd- sbang gr,  
mod srt, mod cmt, sil- arg mtx, vs  
calc, sl mica, com glau  
SHYSS: mgy, trns- op, vf- fgr, sbblky-  
sbply, mod srt, sft- sl firm, pred arg  
mtx, sl calc, v sl mica,

MD 4081'  
INC 6.4°  
AZI 116.6°  
TVD 4063.2'

WOB 20  
RPM 45  
PP 2400  
SPM 140



SS: gy- mgy, s&p, clr- trnsI, sme op , mgr, blk- sbblky, sbrn- sbang gr, mod srt, mod cmt, sil- arg mtX, vs calc, sl mica, abnt glau  
SHYSS: mgy, trnsI- op, vf- fgr, sbblky- sbplty, mod srt, sft- sl firm, pred arg mtX, sl calc, v sl mica, slty

MD 4171'  
INC 6.9°  
AZI 110.1°  
TVD 4152.6'

SS: gy- mgy, s&p, clr- trnsI, sme op , mgr, blk- sbblky, sbrn- sbang gr, mod srt, mod cmt, sil- arg mtX, vs calc, sl mica, tr glau  
SHYSS: mgy, trnsI- op, vf- fgr, sbblky- sbplty, mod srt, sft- sl firm, pred arg mtX, sl calc, v sl mica,

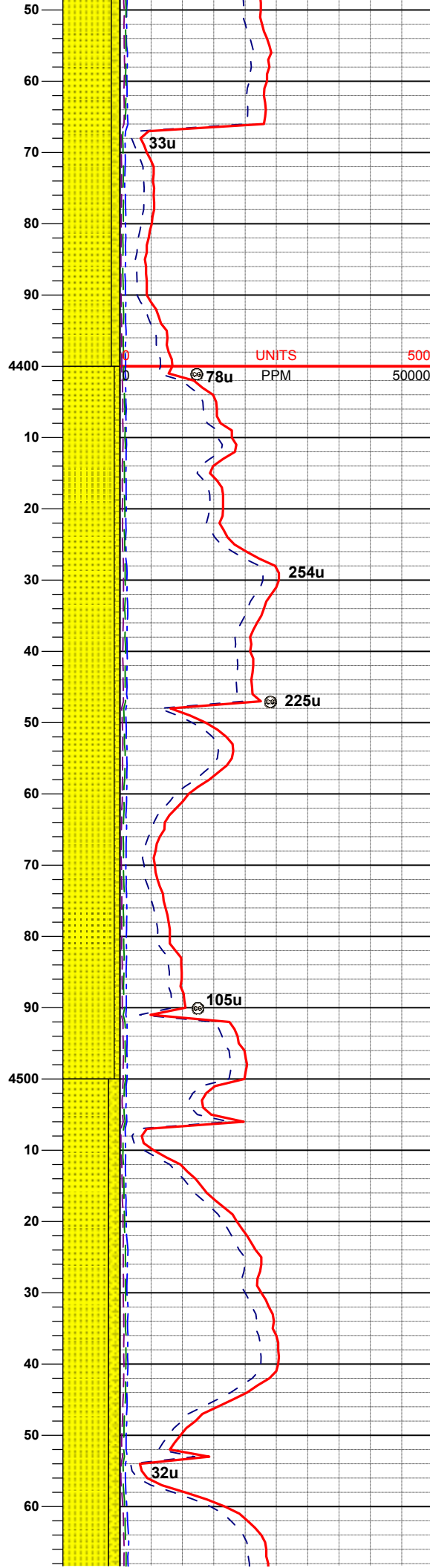
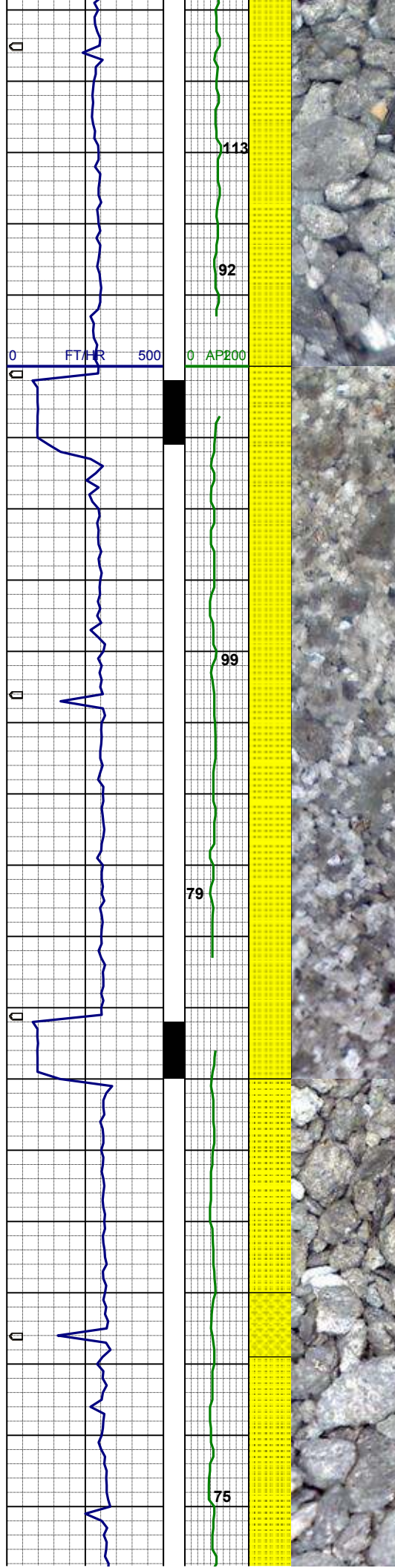
MD 4261'  
INC 6.1°  
AZI 102.2°  
TVD 4242.1'

WT 8.7 / VIS 26

SS: gy- mgy, s&p, clr- trnsI, sme op , mgr, blk- sbblky, sbrn- sbang gr, mod srt, mod cmt, sil- arg mtX, vs calc, sl mica, tr glau  
SHYSS: mgy, trnsI- op, vf- fgr, sbblky- sbplty, mod srt, sft- sl firm, pred arg mtX, sl calc, v sl mica

MD 4351'





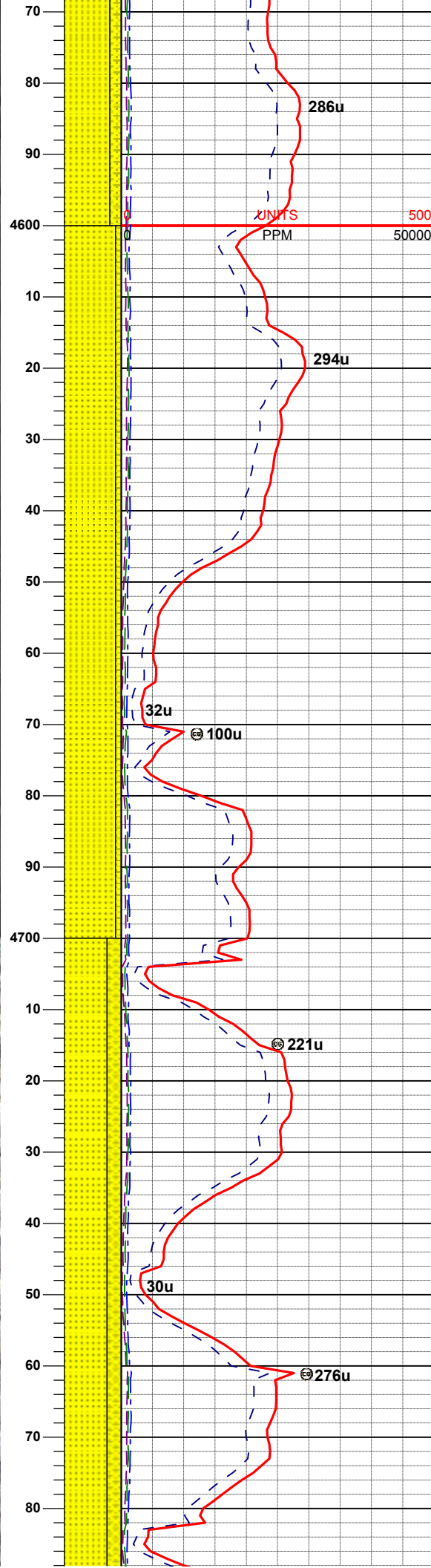
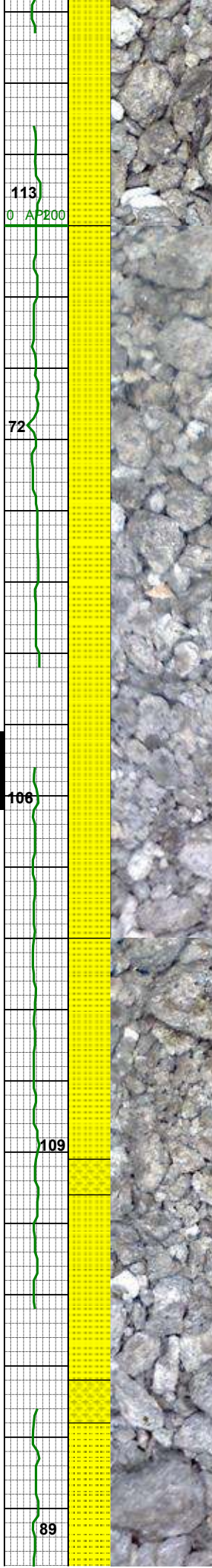
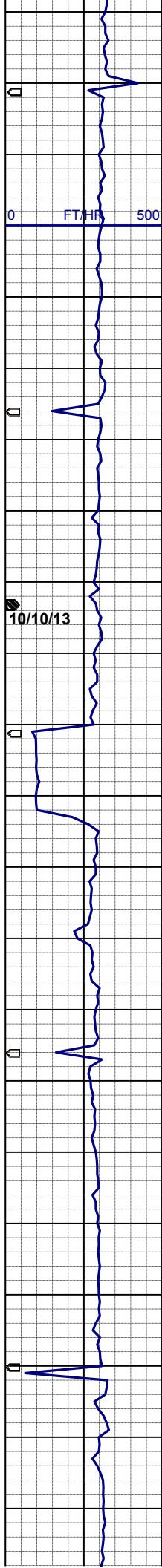
INC 6.8°  
AZI 110.7°  
TVD 4331.5'

MD 4441'  
INC 7.6°  
AZI 113.3°  
TVD 4420.8'

SS: wh-gy- mgy, s&p, clr- trnsi, sme  
op , mgr, blk- sbblky, sbrndd- sbang  
gr, p-mod srt, p cmt, sil- arg mtx, vs  
calc, sl mica, tr glau  
SHYSS: mgy, trnsi- op, vf- fgr, sbblky-  
sbply, mod srt, sft- sl firm, pred arg  
mtx, sl calc, v sl mica,

MD 4531'  
INC 8.0°  
AZI 118.8°  
TVD 4510'

SS: gy- mgy, sme wh , clr- trnsi, sme  
op , f-mgr, blk- sbblky, sbrndd-  
sbang gr, p-mod srt, mod cmt, sil- arg  
mtx, vs calc, sl mica, tr glau  
SHYSS: mgy, trnsi- op, vf- fgr, sbblky-  
sbply, mod srt, sft- sl firm, pred arg  
mtx, sl calc, v sl mica



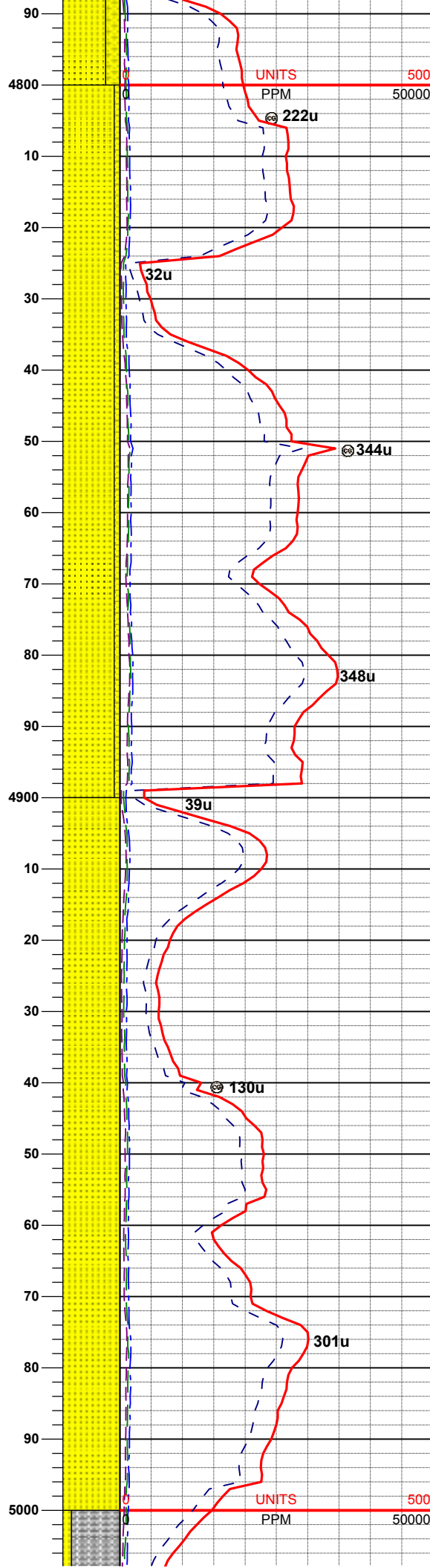
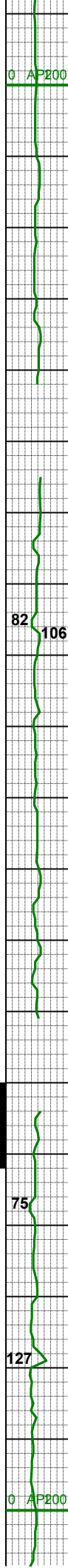
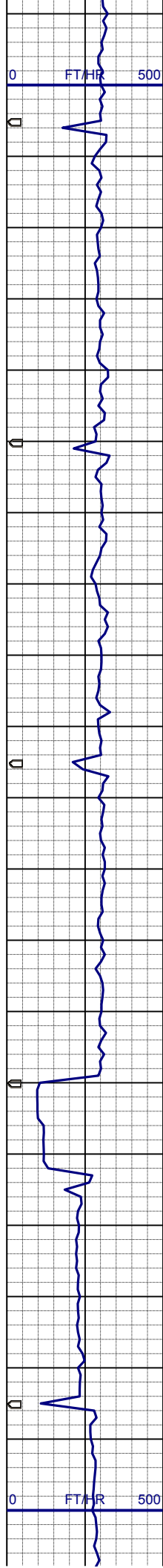
MD 4621'  
INC 6.7°  
AZI 125.4°  
TVD 4599.2'

SS: gy- mgy, sme wh , clr- trnsl, sme  
op , f-mgr, blk- sbblky, sbrnodd-  
sbang gr, p-mod srt, mod cmt, sil- arg  
mtx, vs calc, sl mica, tr glau  
SHYSS: mgy, trnsl- op, vf- fgr, sbblky-  
sbplty, mod srt, sft- sl firm, pred arg  
mtx, sl calc, sl mica

MD 4710'  
INC 7.3°  
AZI 118.9°  
TVD 4687.6'

SS: gy- mgy, sme wh , clr- trnsl, sme  
op , f-mgr, blk- sbblky, sbrnodd-  
sbang gr, p-mod srt, mod cmt, sil- arg  
mtx, vs calc, sl mica, tr glau  
SHYSS: mgy, trnsl- op, vf- fgr, sbblky-  
sbplty, mod srt, sft- sl firm, pred arg  
mtx, sl calc





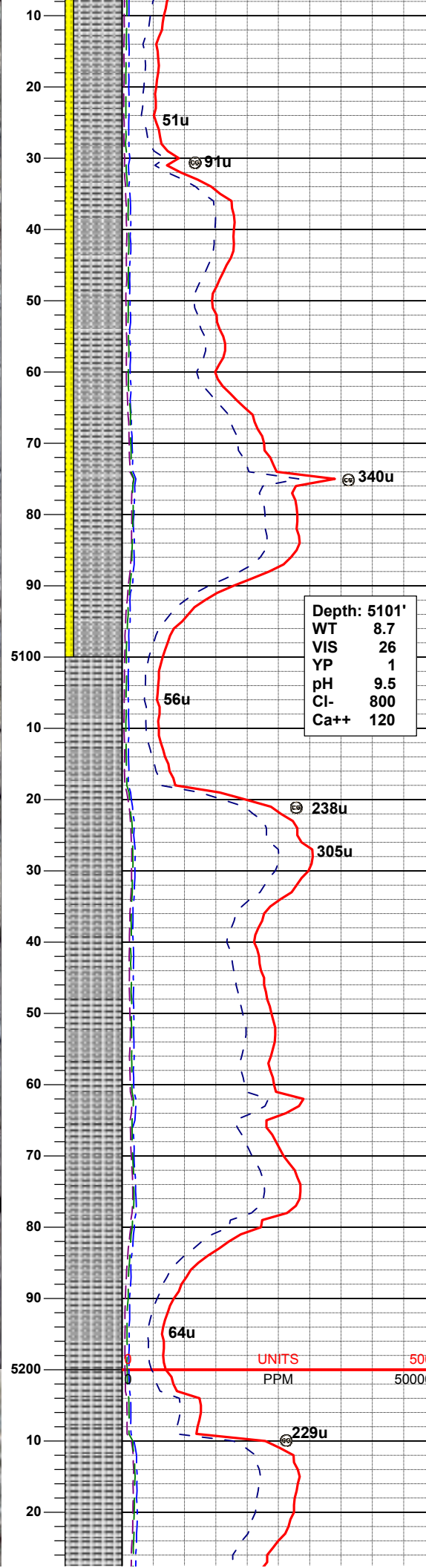
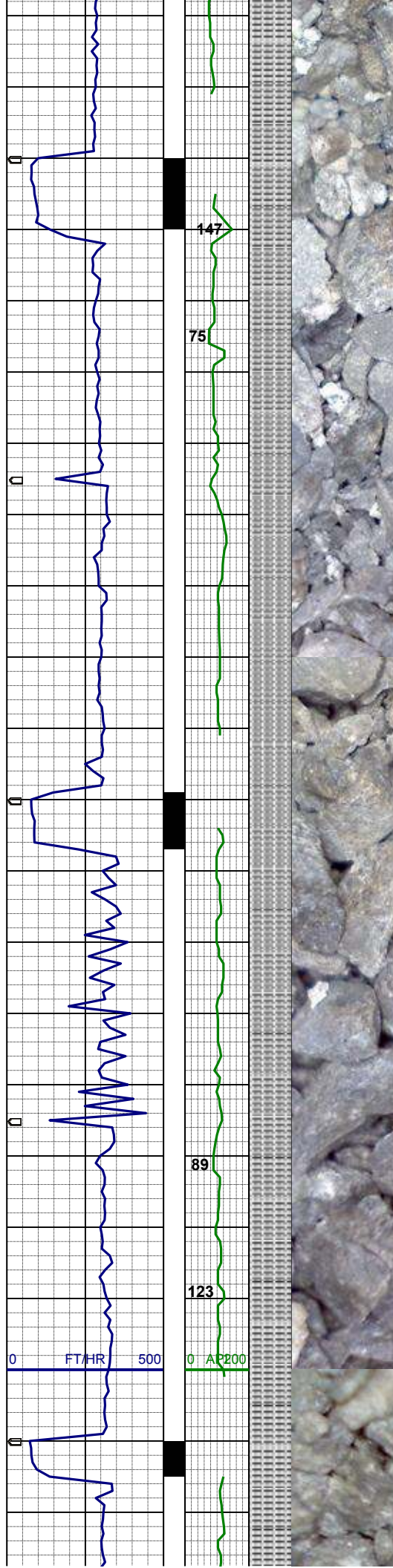
MD 4800'  
INC 7.0°  
AZI 118.2°  
TVD 4776.9'

SS: gy- mgy, clr- trns, sme op , f-mgr,  
blky- sbblky, sbrndd- sbang gr, p-mod  
srt, mod cmt, sil- arg mtx, vs calc, sl  
mica  
SHYSS: mgy, trns- op, vf- fgr, sbblky-  
sbplty, mod srt, sft- sl firm, pred arg  
mtx, sl calc

MD 4890'  
INC 5.9°  
AZI 111.2°  
TVD 4866.3'

SS: wh-gy, clr- trns, sme op , f-mgr,  
blky- sbblky, sbrndd- sbang gr, mod  
srt, p cmt, sil- arg mtx, vs calc, sl  
mica, tr glau

MD 4980'  
INC 6.4°  
AZI 111.5°  
TVD 4955.8'



SLTYSH: lt-mgy, f-vfgr, sbblky-sbplty, occ plty, sft-firm, arg, sl calc, pyr clus  
SS: wh- mgy, s&p, clr- trnsl, sme op , mgr, blky- sbblky, sbrndd- sbang gr, mod srt, firm, m cmt, sil- arg mtx, vs calc, sl mica

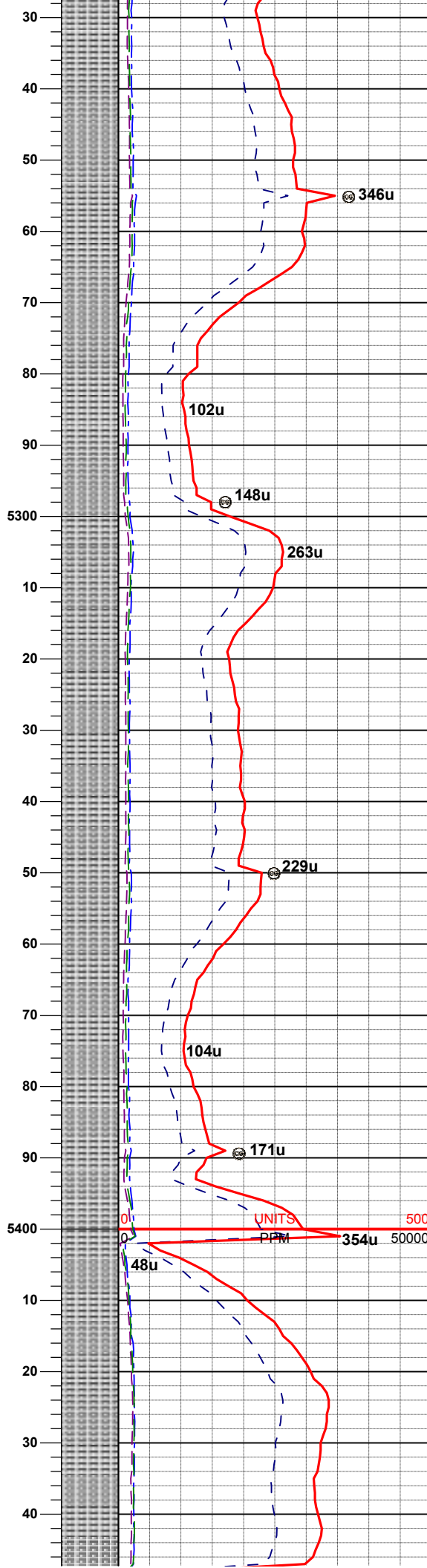
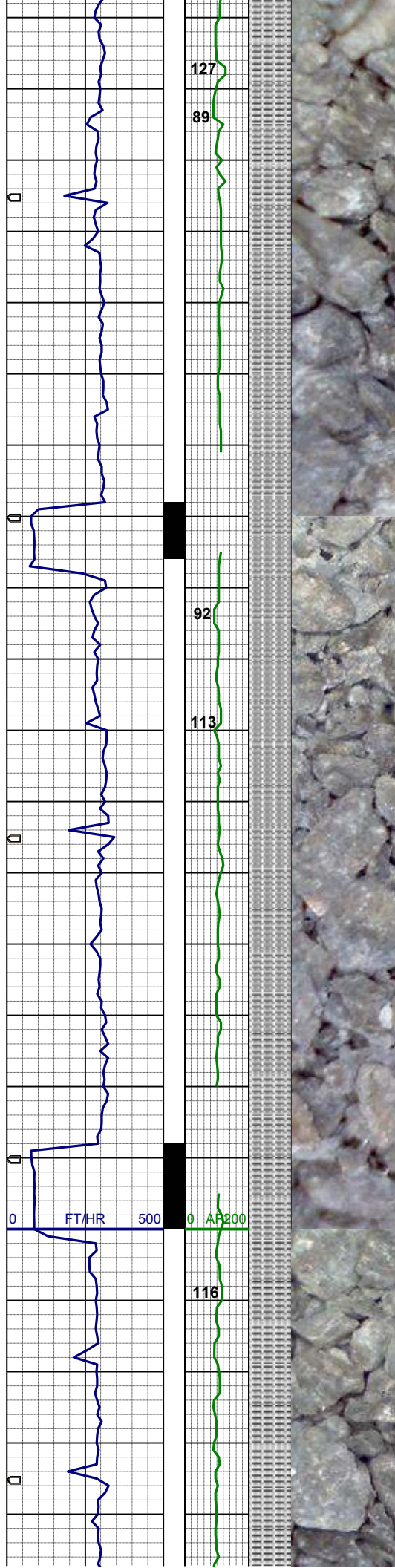
MD 5070'  
INC 6.2°  
AZI 123.0°  
TVD 5045.2'

Depth: 5101'  
WT 8.7  
VIS 26  
YP 1  
pH 9.5  
Cl- 800  
Ca++ 120

SLTYSH: m- dkgy, sme tan, sbblky-sbplty, occ plty, sft- sl firm, arg, sl calc w/ occ calc frag, occ pyr, sdy ip, grdg-shyss

MD 5160'  
INC 3.8°  
AZI 121.4°  
TVD 5134.9'





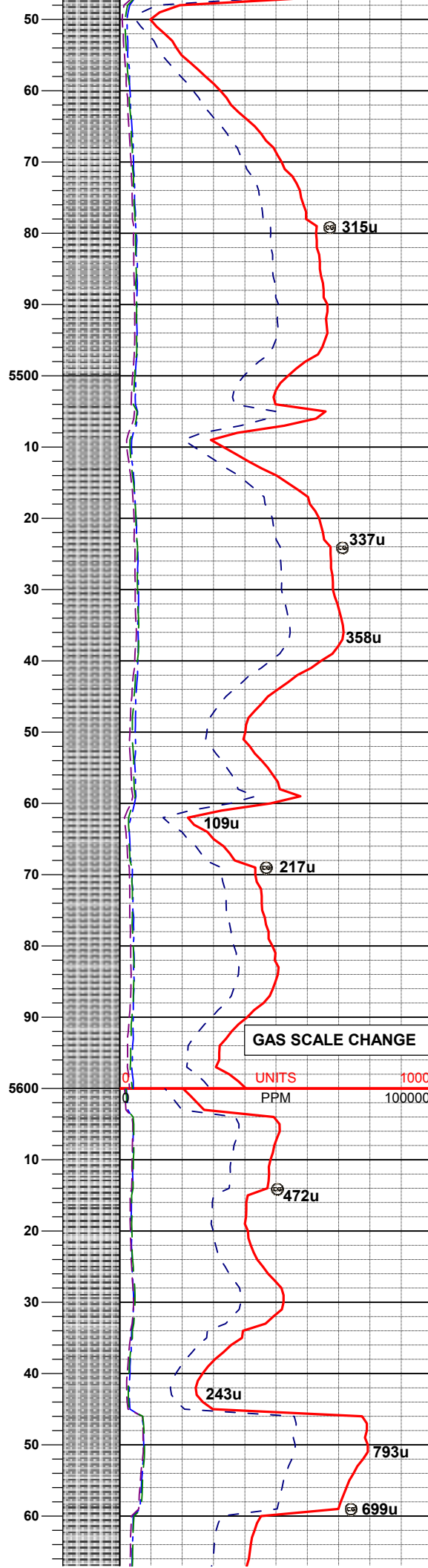
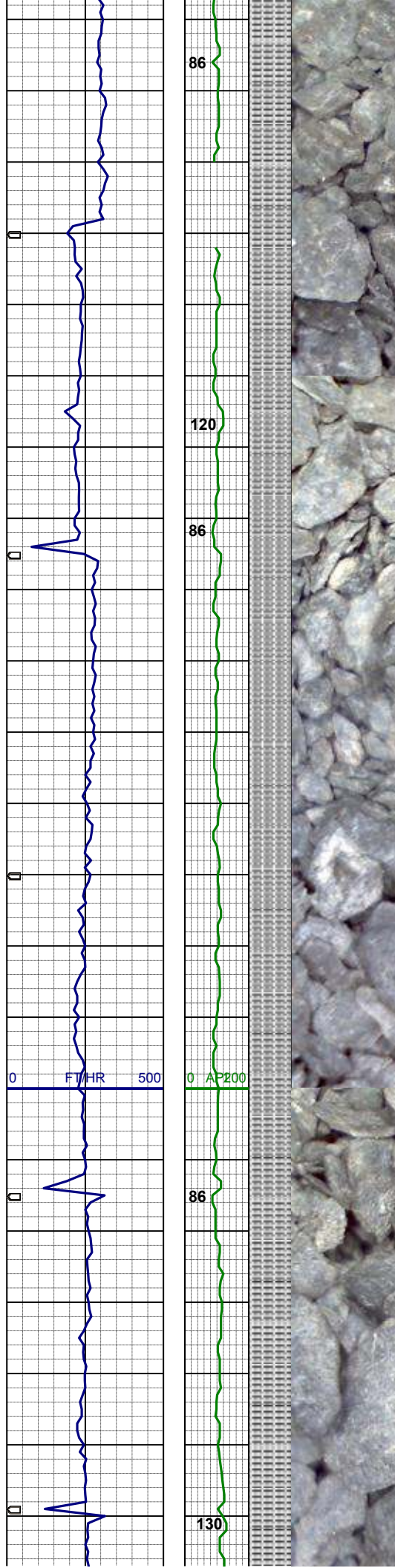
MD 5250'  
INC 2.9°  
AZI 122.1°  
TVD 5224.7'

SLTYSH: m- dkgy, sme tan, plty-sbplty, sft- sl firm, arg, sl calc w/ occ calc frag, occ fos frag, sdy ip, grdg-shyss

MD 5340'  
INC 2.0°  
AZI 143.7°  
TVD 5314.7'

SLTYSH: mgy, sme tan, plty- sbplty, sft- sl firm, arg, sl calc w/ occ calc frag, occ fos frag, sdy ip, grdg- shyss

MD 5430'  
INC 0.5°  
AZI 270.6°  
TVD 5404.6'



SLTYSH: mgy, occ gybrn, plty- sbplty,  
sft- sl firm, sl calc w/ occ calc frag,  
occ fos frag, sdy ip, grdg- shyss

MD 5520'  
INC 0.9°  
AZI 278.5°  
TVD 5494.6'

SLTYSH: mgy, occ gybrn, plty- sbplty,  
sft- sl firm, sl calc w/ occ calc frag,  
occ fos frag, sdy ip, grdg- shyss

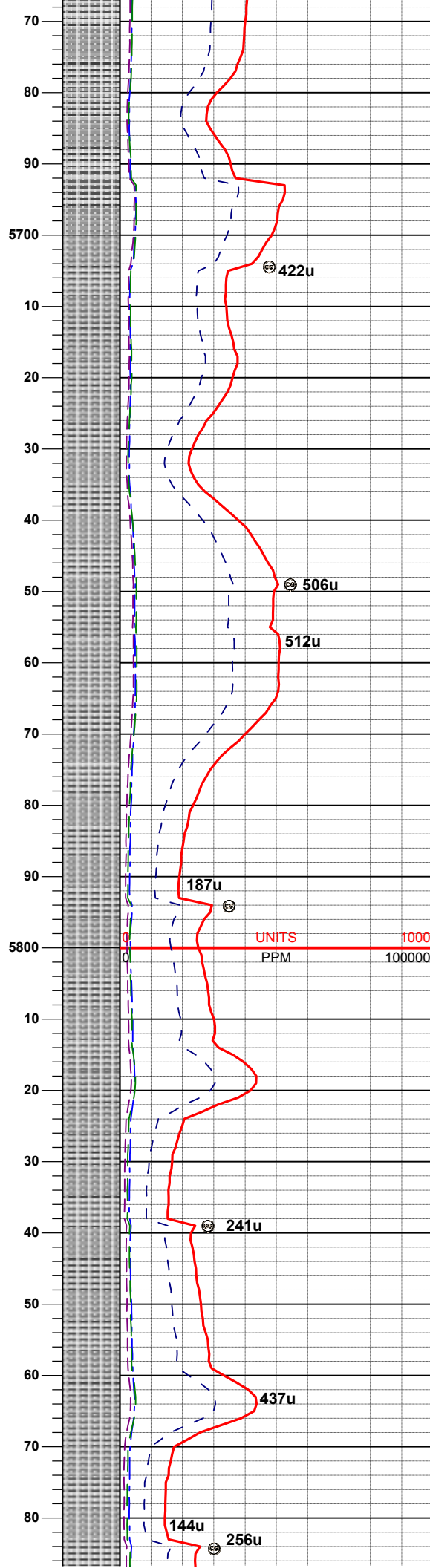
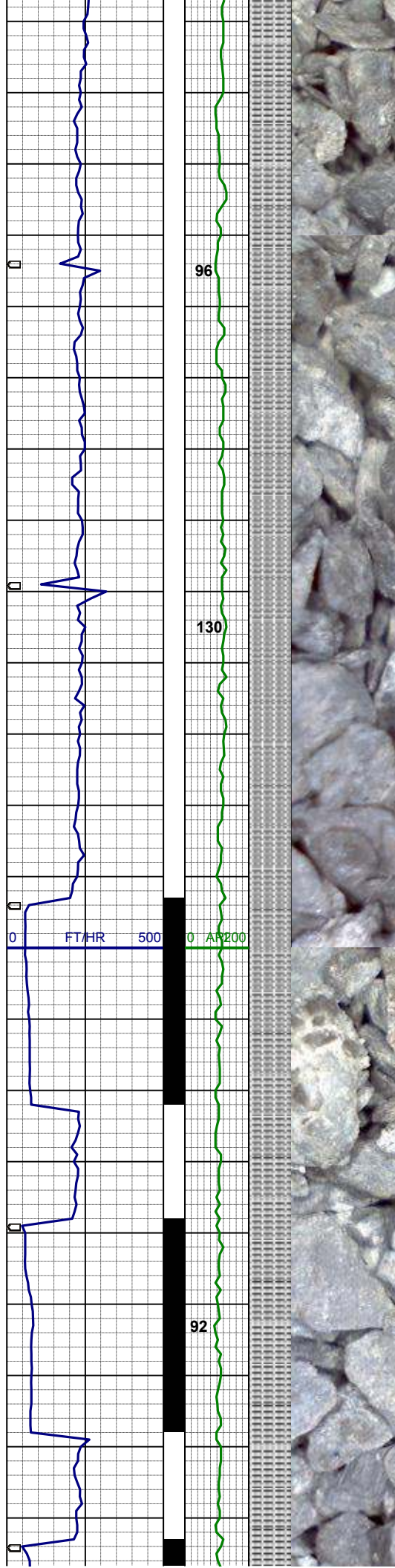
GAS SCALE CHANGE

UNITS 1000  
PPM 100000

MD 5609'  
INC 0.7°  
AZI 271.0°  
TVD 5583.6'

SLTYSH: m- dkgy, plty- sbplty, sft- sl  
firm, sl calc, tr fos frag, sdy ip, mica ip





MD 5699'  
INC 0.9°  
AZI 277.8°  
TVD 5673.6'

SLTYSH: m- dkgy, plty- sbplty, sft- sl  
firm, sl calc, tr fos frag, sdy ip, mica ip

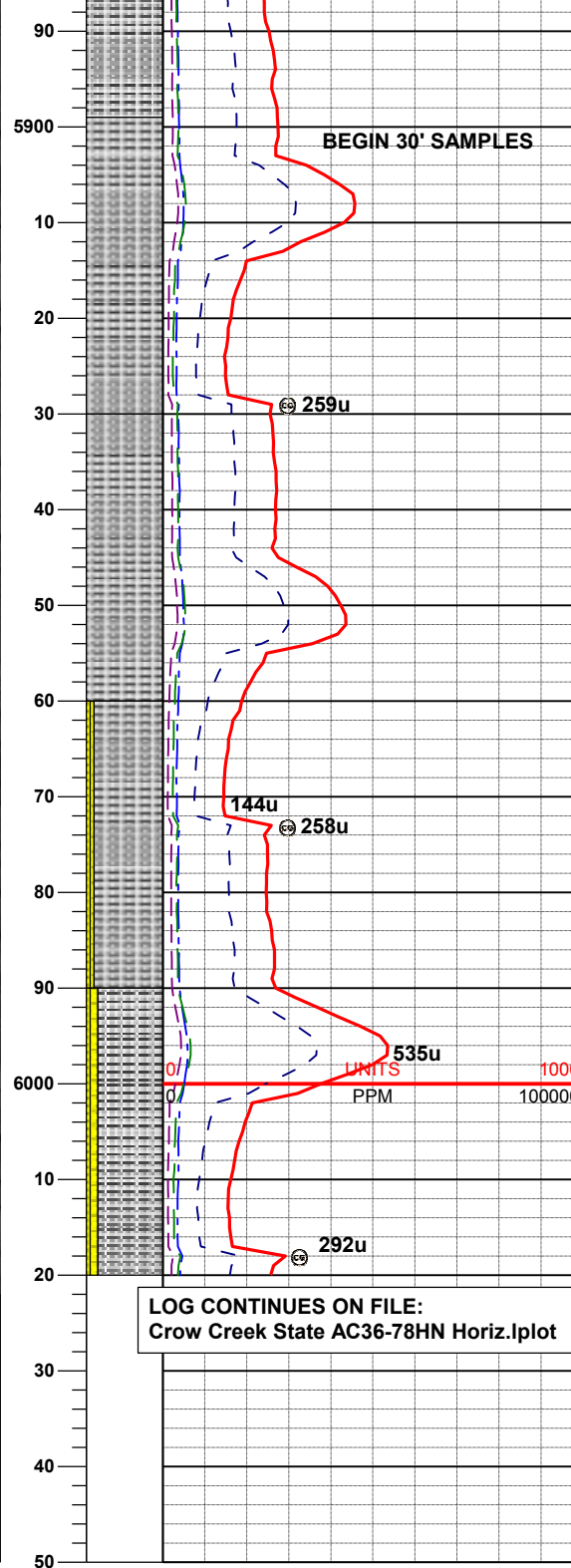
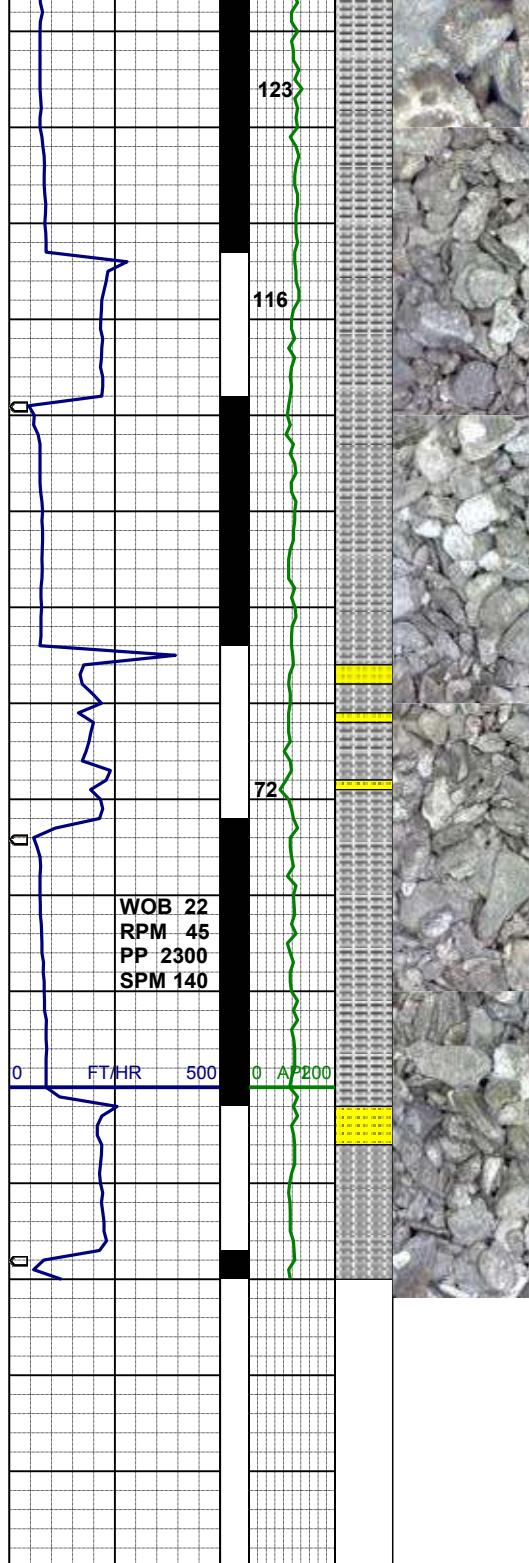
MD 5789'  
INC 1.1°  
AZI 302.4°  
TVD 5763.6'

WT 9.55 / VIS 34

MD 5834'  
INC 3.4°  
AZI 348.0°  
TVD 5808.6'

SLTYSH: m- dkgy, plty- sbplty, sft- sl  
firm, sl calc, tr fos frag, sdy ip

MD 5879'  
INC 6.5°  
AZI 352.5°  
TVD 5853.4'



SLTYSH: m- dkgy, occ gybrn, plty-sbplty, mod firm, sl calc, sdy ip

MD 5924'  
INC 9.3°  
AZI 356.4°  
TVD 5898.0'

SLTYSH: m- dkgy, occ gybrn, plty-sbplty, mod firm, sl calc, sdy ip

MD 5968'  
INC 11.9°  
AZI 356.1°  
TVD 5941.2'

SLTYSH: m- dkgy, occ gybrn, plty-sbplty, mod firm, sl calc, sdy ip, grdg-shyss

SS: lt- mgy, occ wh, clr- trnsl, sme op, f-mgr, blk- sbblky, sbang gr, mod srt, mod cmt, sil- arg mtx, vs calc, sl mica

WT 9.6 / VIS 36

MD 6013'  
INC 13.9°  
AZI 357.1°  
TVD 5985.1'

THANK YOU FOR CHOOSING  
COLUMBINE LOGGING, INC.