



RADIAL BOND LOG
GAMMA RAY
CCL

Company KERR-McGEE OIL & GAS ONSHORE LP
Well USA 19-36
Field WATTENBERG
County WELD
State COLORADO

Company KERR-McGEE OIL & GAS ONSHORE LP
Well USA 19-36
Field WATTENBERG
County WELD State COLORADO

Location: API # : 05-123-25262
SHL:1195' FSL & 1426' FWL SE/SW
SEC 36 TWP 3N RGE 66W
Permanent Datum GL Elevation 5005'
Log Measured From K.B. 14'
Drilling Measured From KB
Other Services
K.B. 5019'
D.F. 5018'
G.L. 5005'

Date

11-20-2013

Run Number ONE
Depth Driller 7570'
Depth Logger 3900'
Bottom Logged Interval 3900'
Top Log Interval 50
Open Hole Size 7 7/8
Type Fluid WATER
Density / Viscosity 1.0
Max. Recorded Temp. N/A
Estimated Cement Top 140'
Time Well Ready N/A
Time Logger on Bottom N/A
Equipment Number 5432
Location GREELEY, CO
Recorded By M. JANDREAU
Witnessed By JAY CHANDLER

Borehole Record				Tubing Record			
Run Number	Bit	From	To	Size	Weight	From	To
ONE							
TWO							

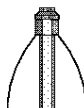
Casing Record	Size	Wgt/Ft	Top	Bottom
Surface String	8 5/8		0	906'
Prot. String			0	7568'
Production String				
Liner				

<<< Fold Here >>>

All interpretations are opinions based on inferences from electrical or other measurements and we cannot and do not guarantee the accuracy or correctness of any interpretation, and we shall not, except in the case of gross or willful negligence on our part, be liable or responsible for any loss, costs, damages, or expenses incurred or sustained by anyone resulting from any interpretation made by any of our officers, agents or employees. These interpretations are also subject to our general terms and conditions set out in our current Price Schedule.

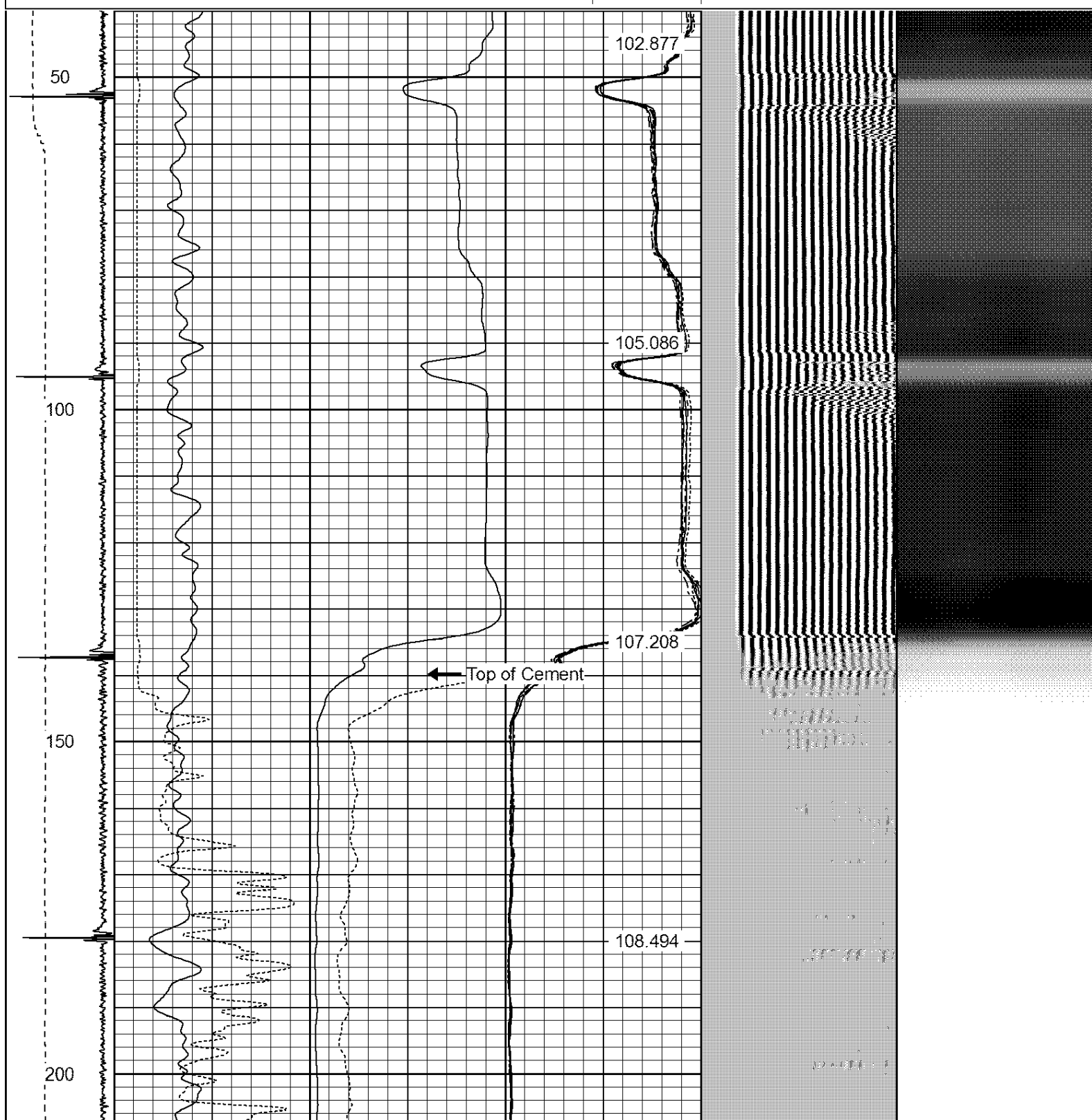
Comments

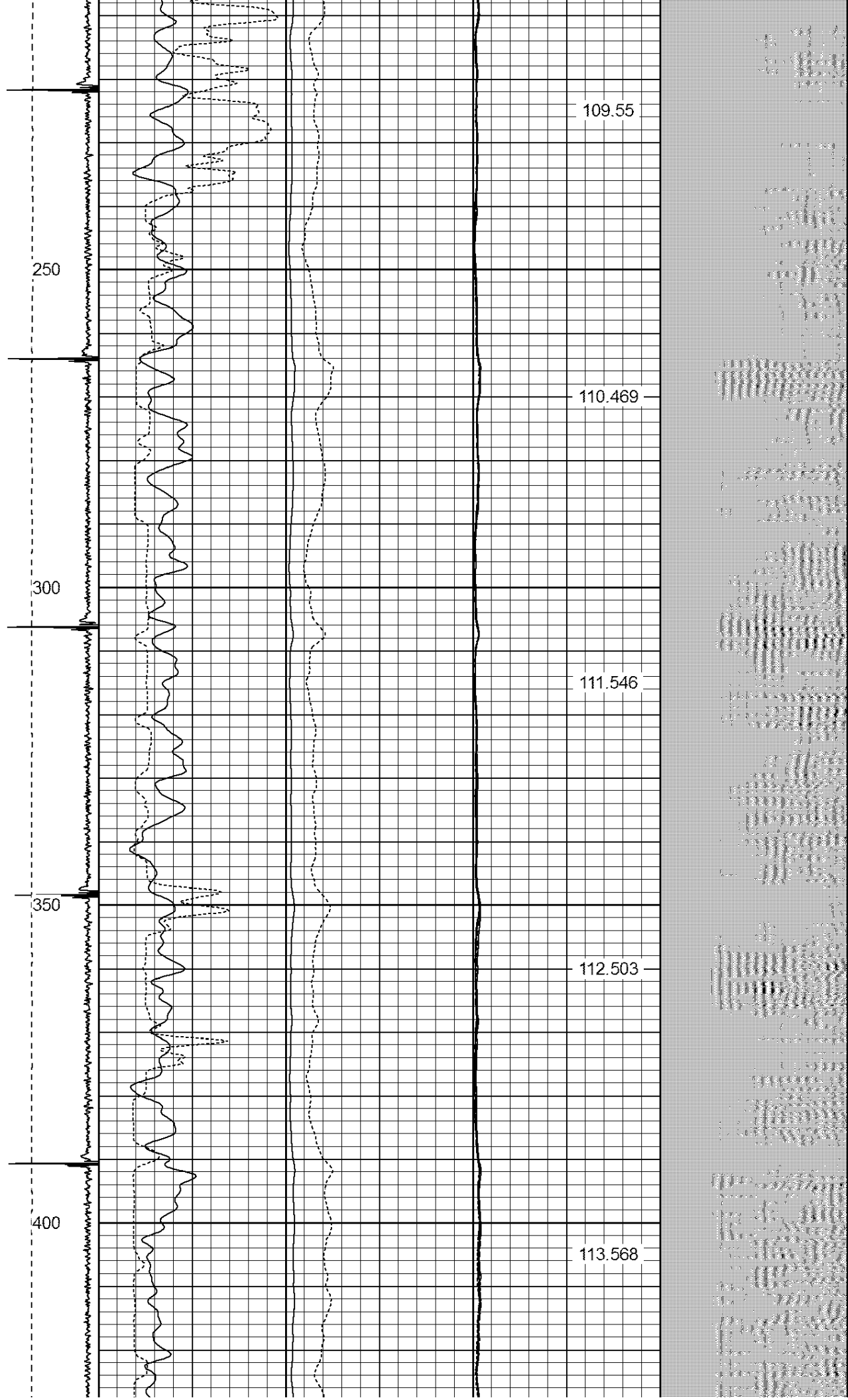
NOT CORRELATED
RAN LOG TO VERIFY CEMENT
THANK YOU FOR USING WARRIOR ENERGY SERVICES!!!!

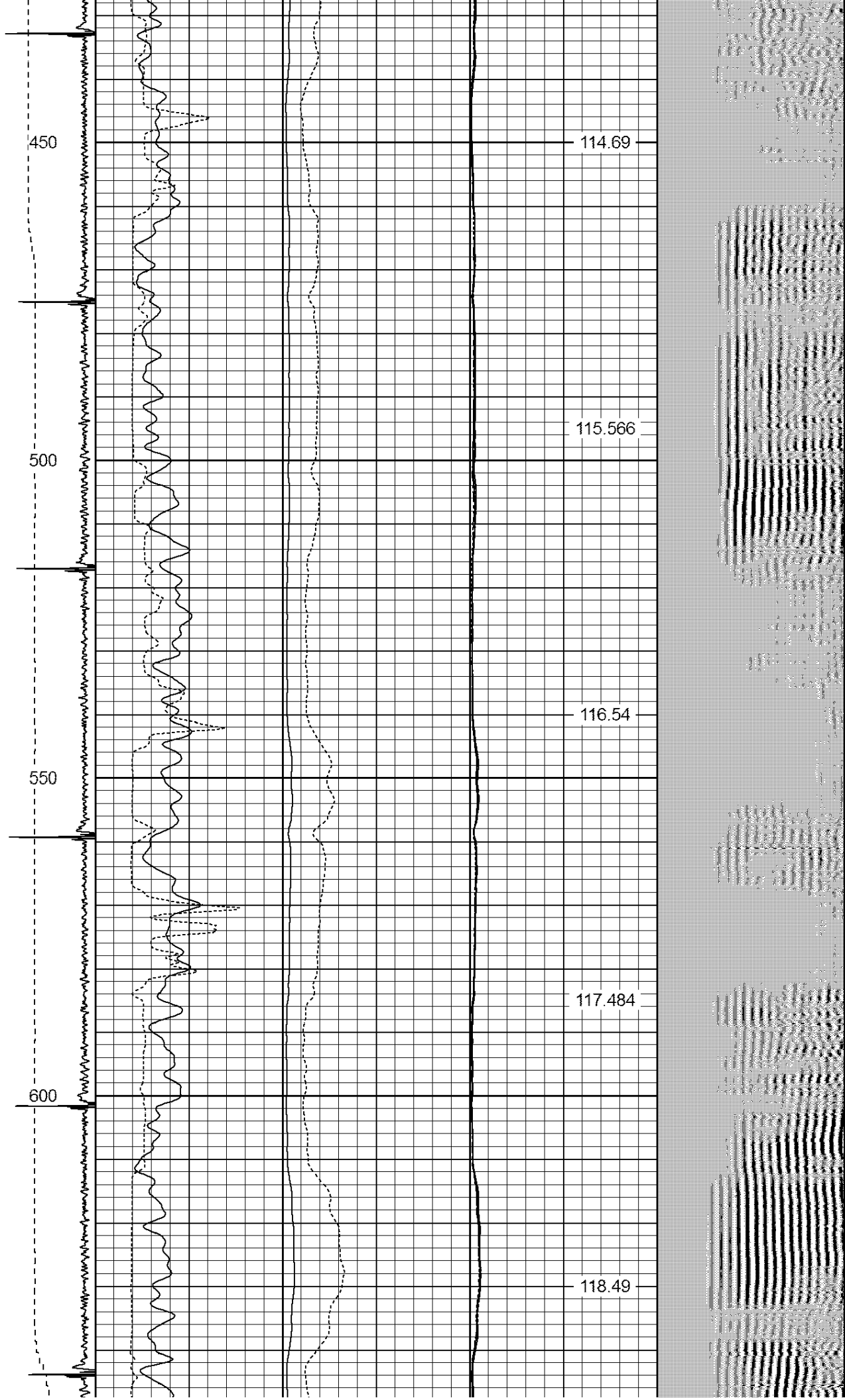
Sensor	Offset (ft)	Schematic	Description	Len (ft)	OD (in)	Wt (lb)
						

[illegible]

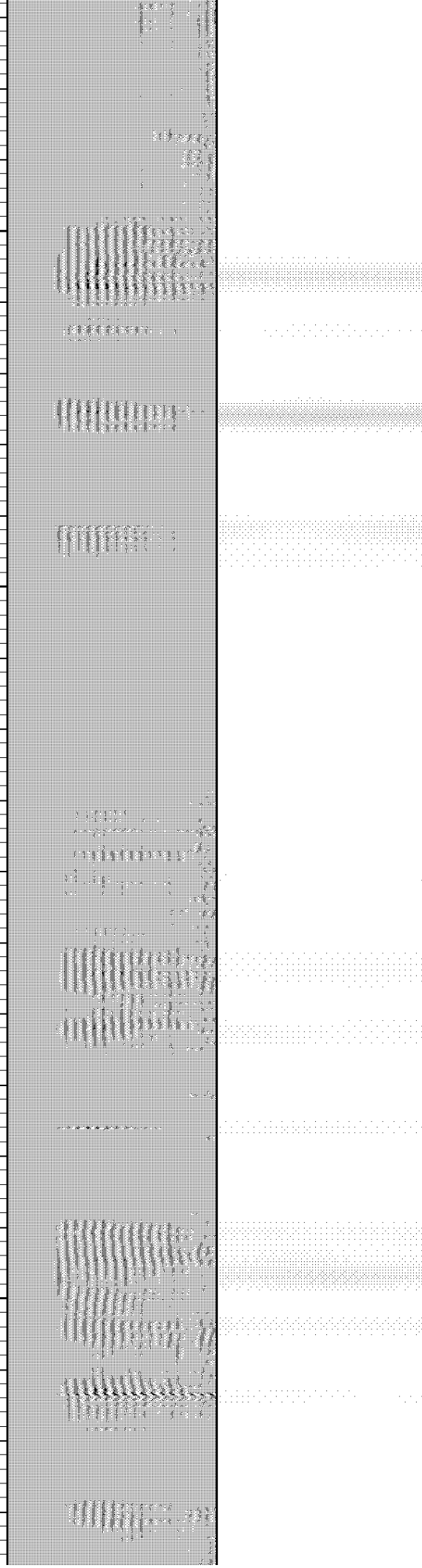
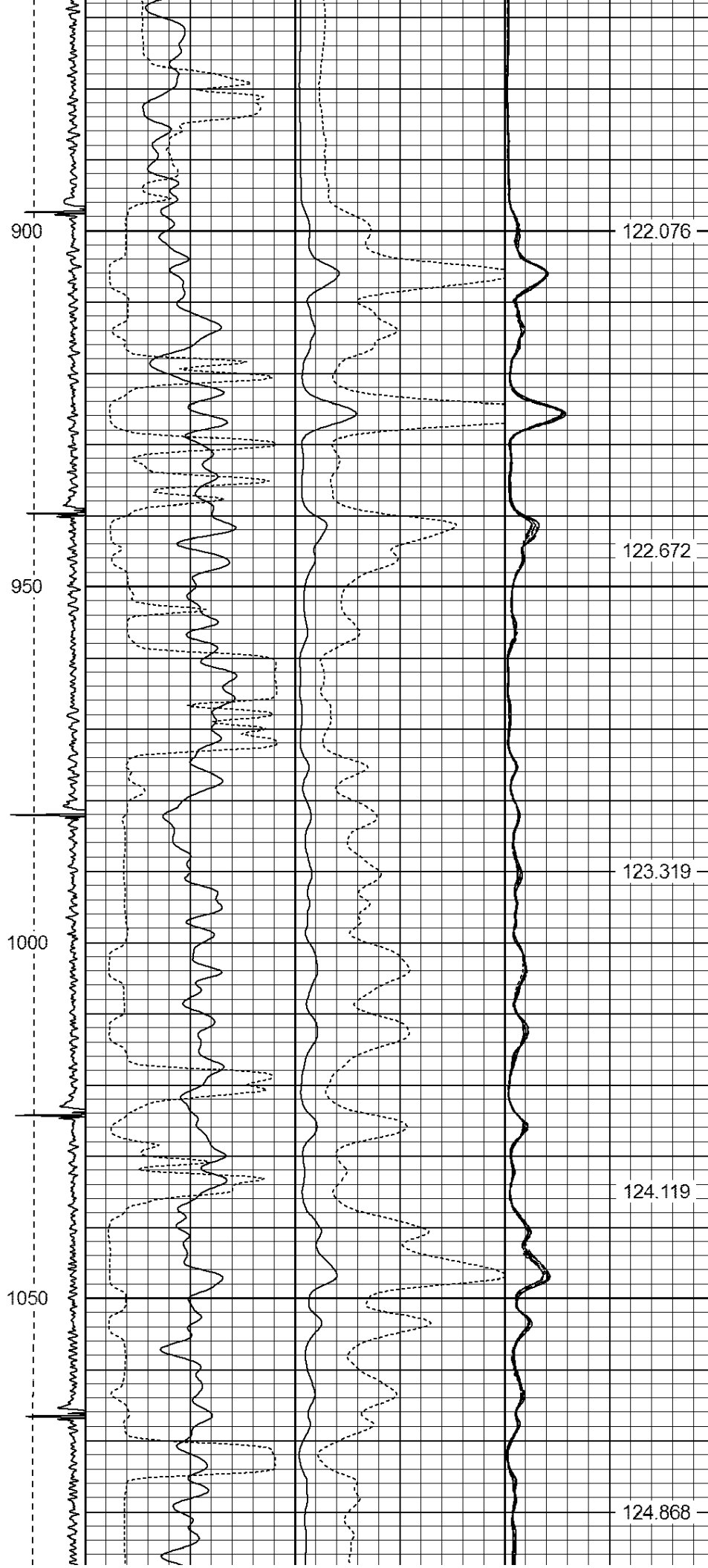
-9	CCL	1	200	TT (usec)	800	0	AMP (mV)	100	0	AMPS1	100	200	VDL	1200	1	Cement Map	8
LSPD			0	GR (GAPI)	200	0	AMPx5 (mV)	20	0	AMPS2	100				1		100
(ft/min)			200	GR (GAPI)	400				0	AMPS4	100						
0		250							0	AMPS5	100						
									0	AMPS6	100						
									0	AMPS7	100						
									0	AMPS8	100						
										IntTemp							
										(degF)							











1100

1150

1200

1250

1300

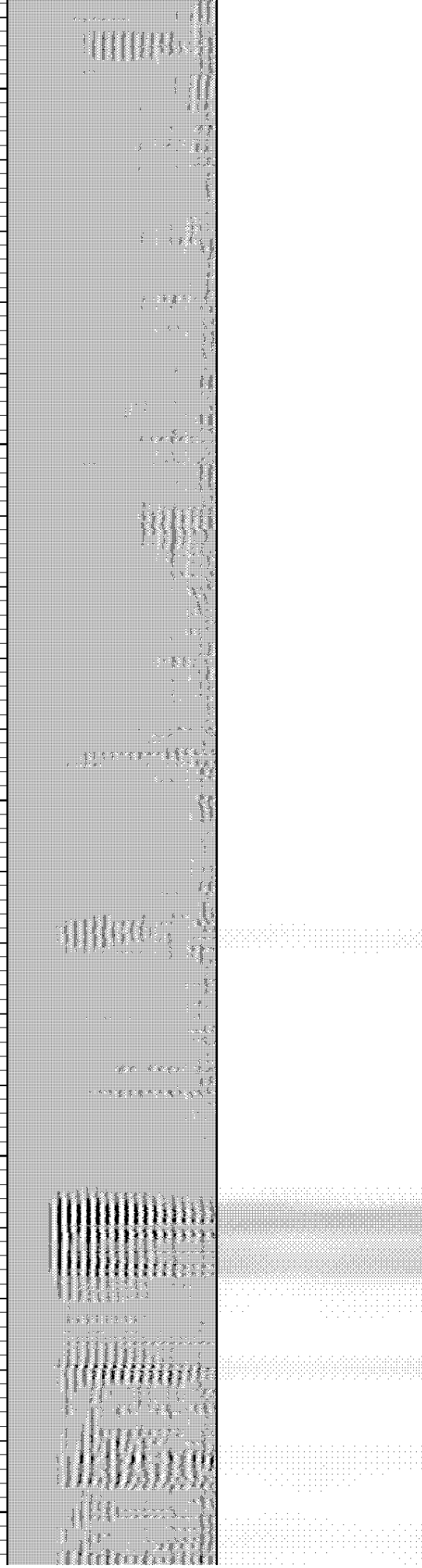
125.635

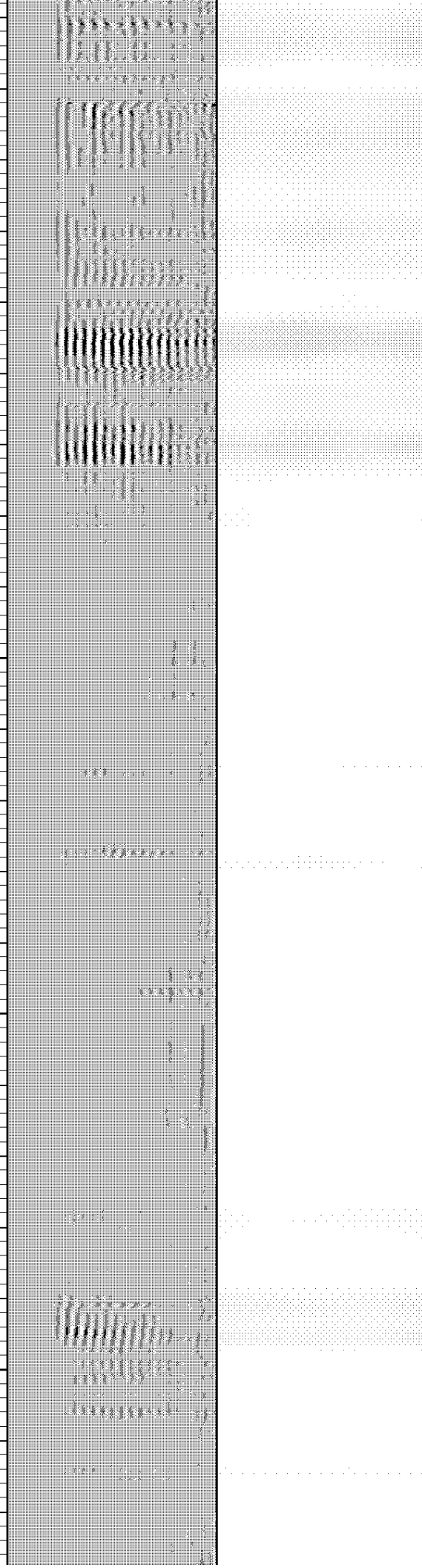
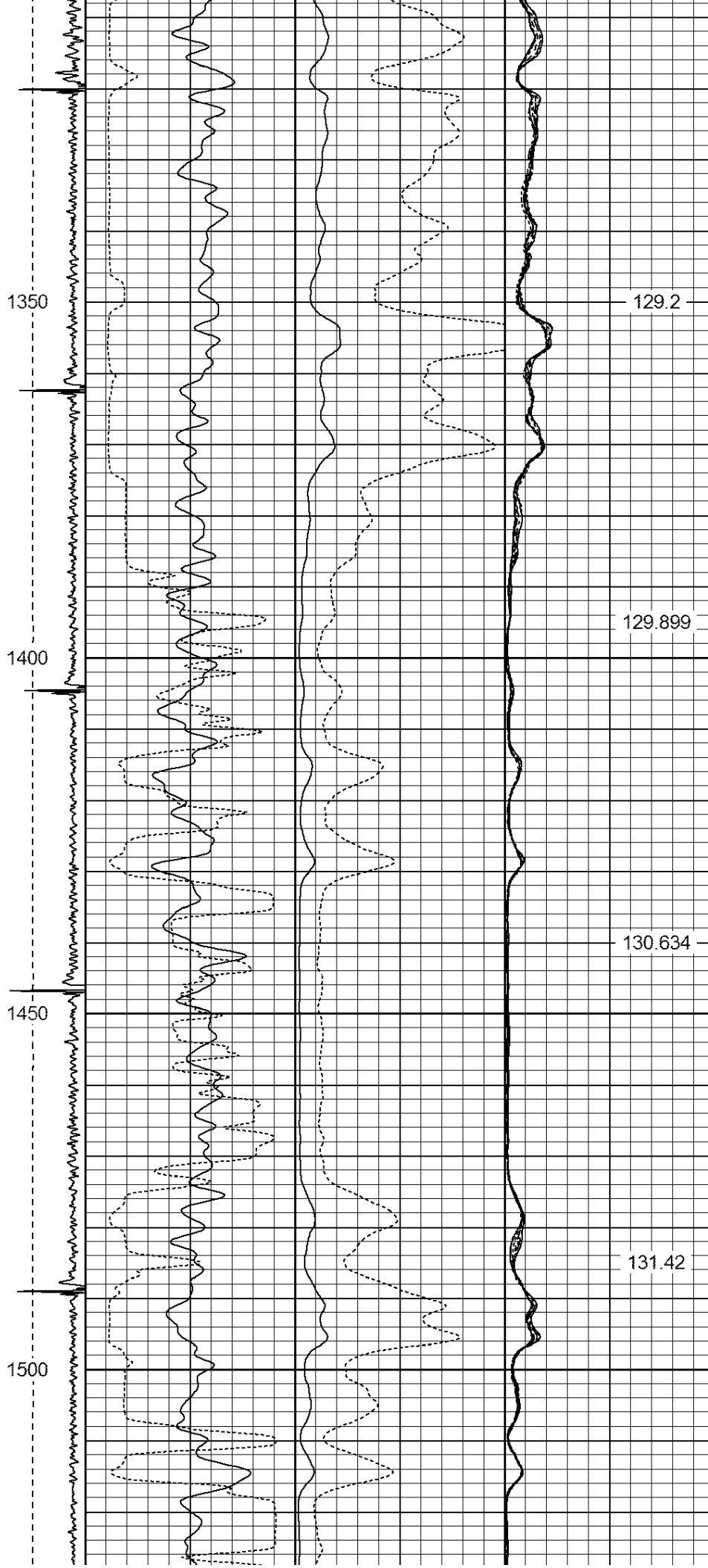
126.403

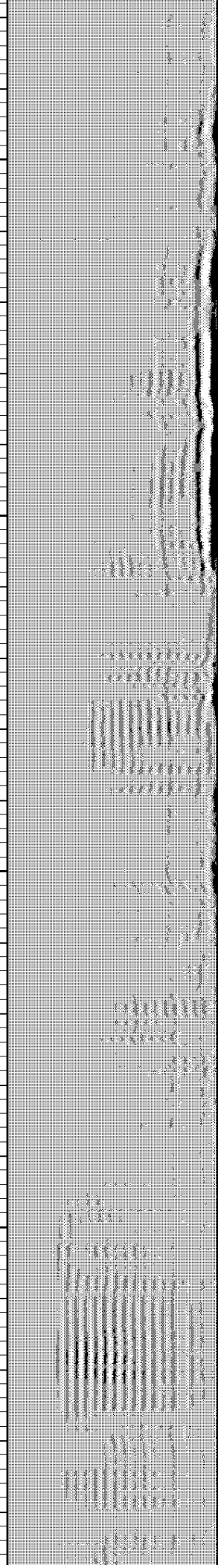
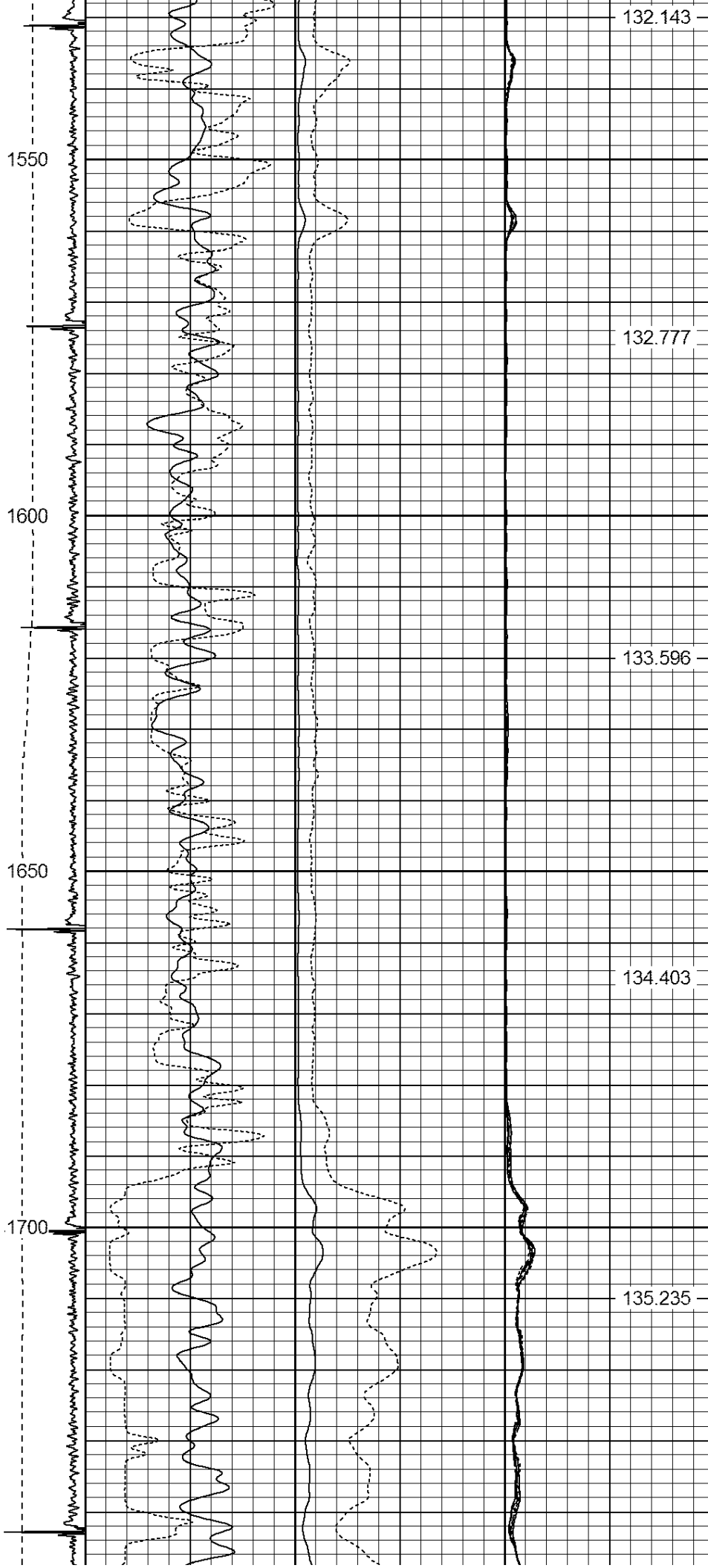
127.035

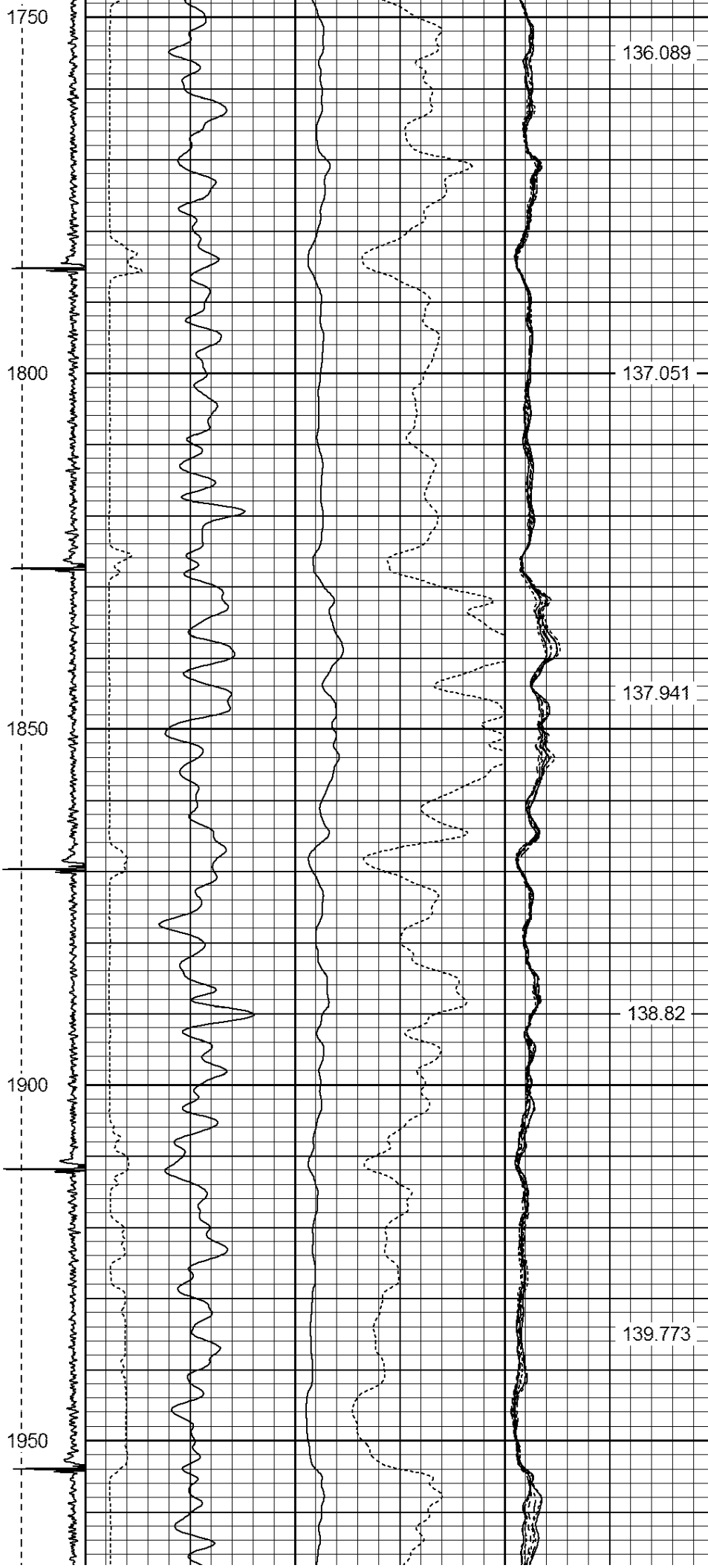
127.819

128.463









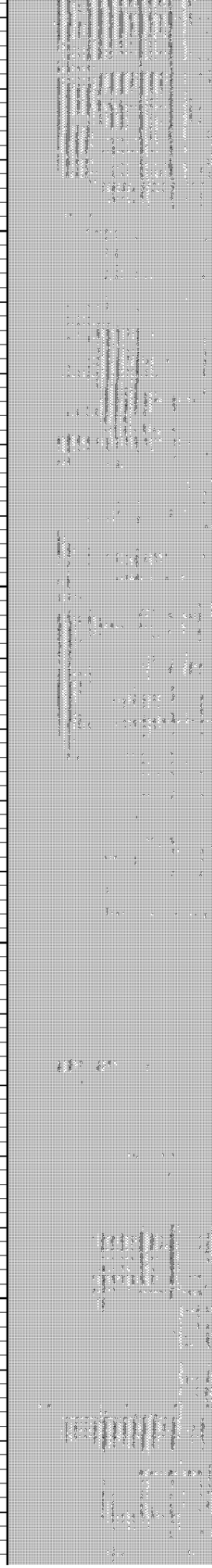
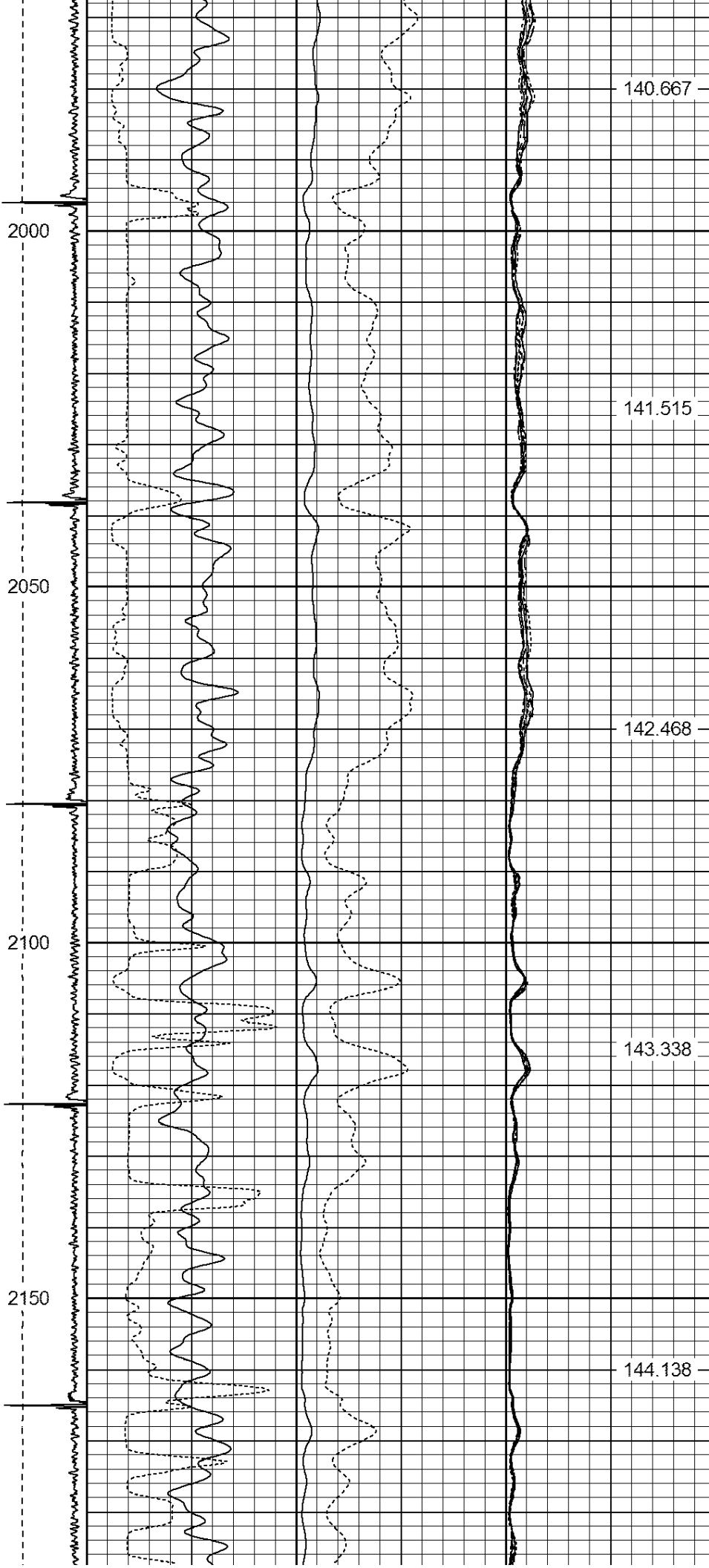
136.089

137.051

137.941

138.82

139.773



2200

145.016

2250

145.642

2300

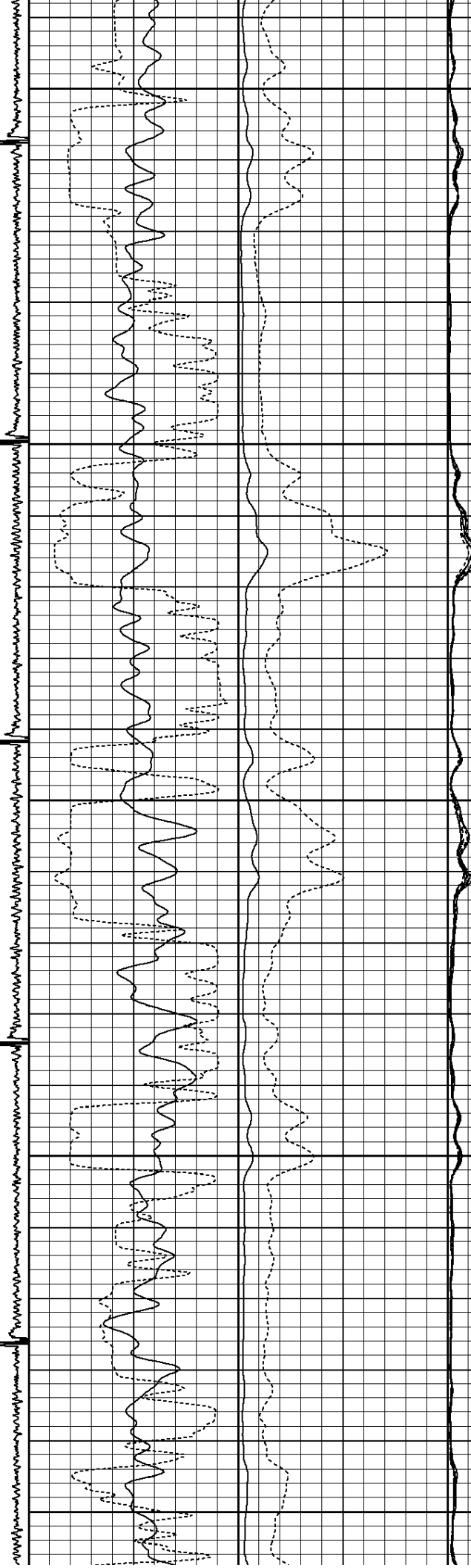
146.294

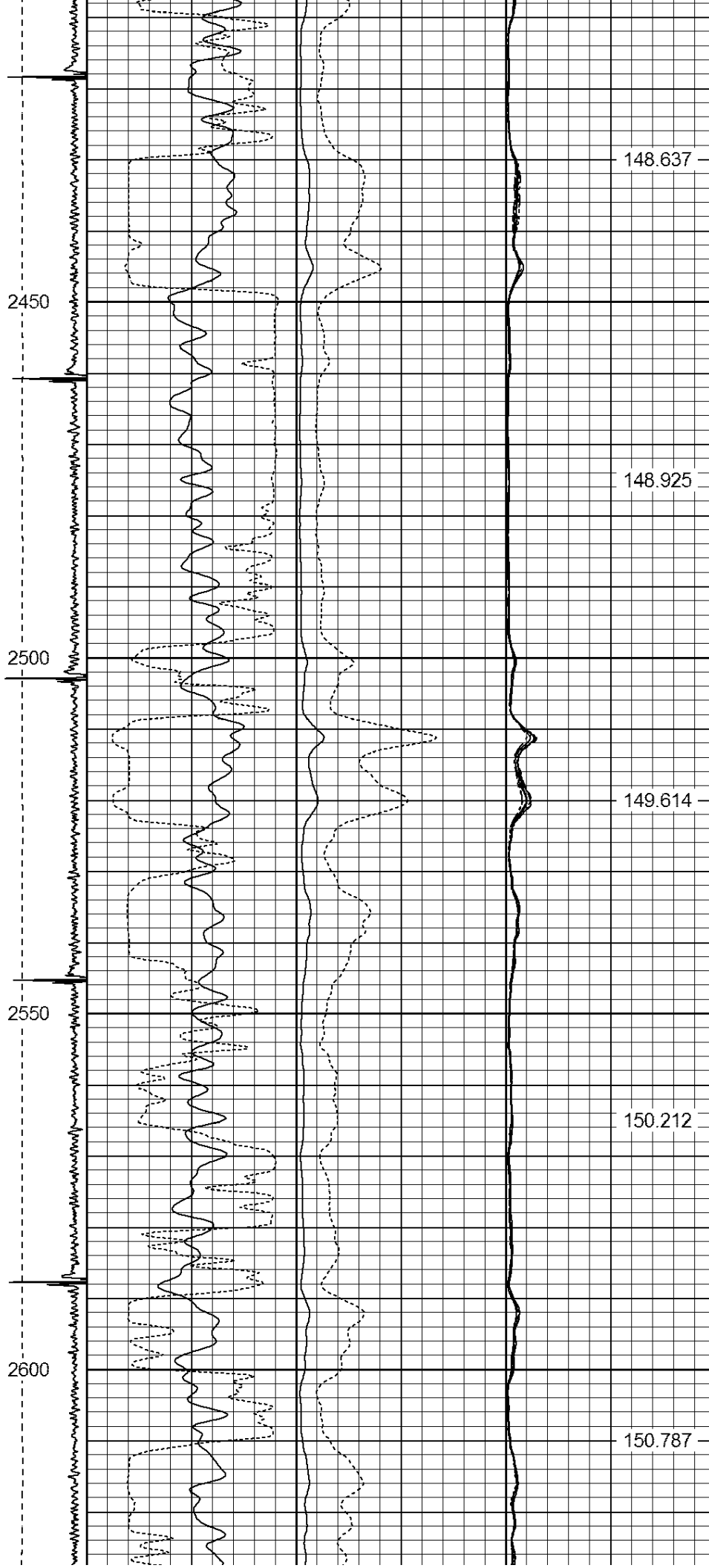
2350

146.965

2400

147.891





2650

151.258

2700

151.755

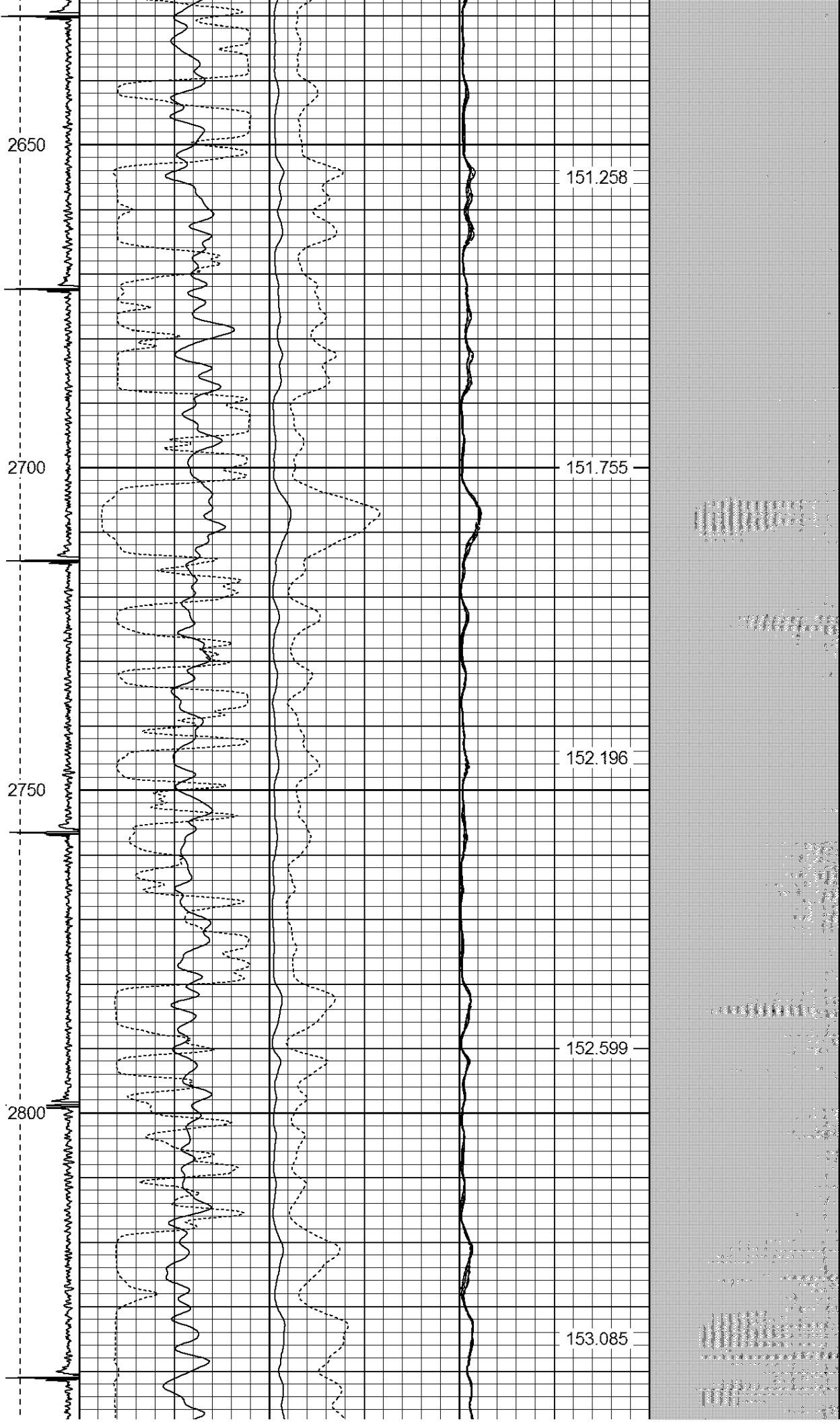
2750

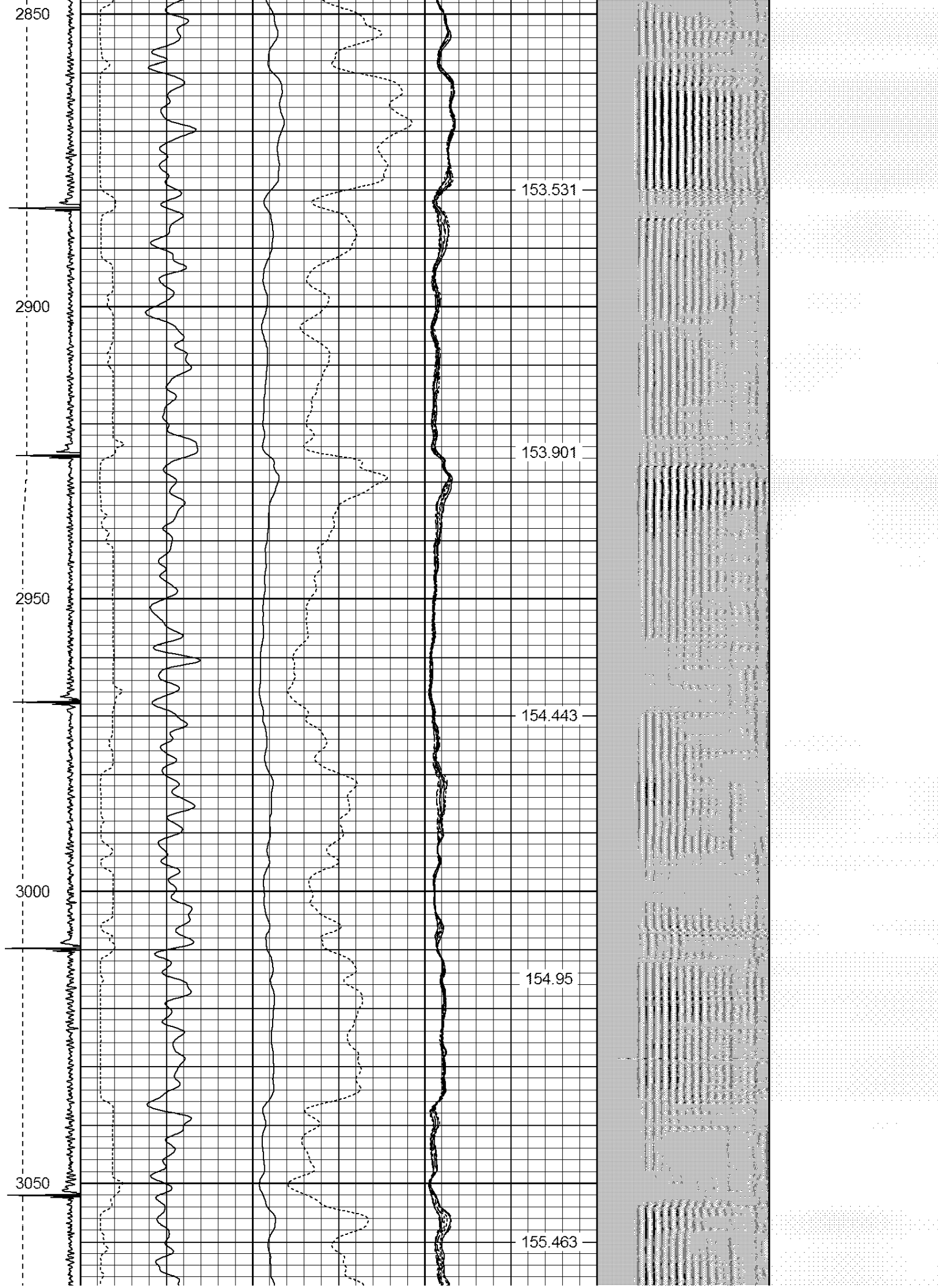
152.196

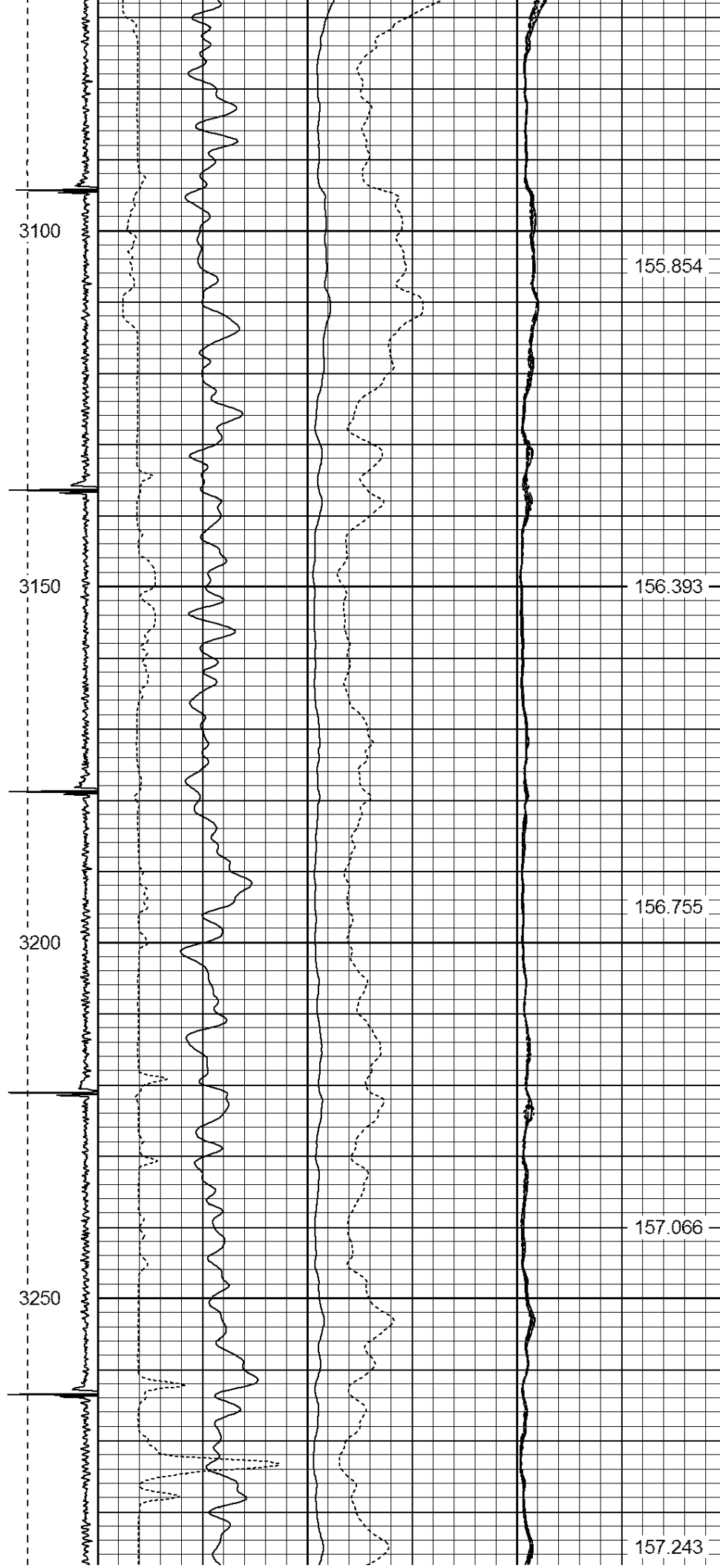
2800

152.599

153.085







3300

3350

3400

3450

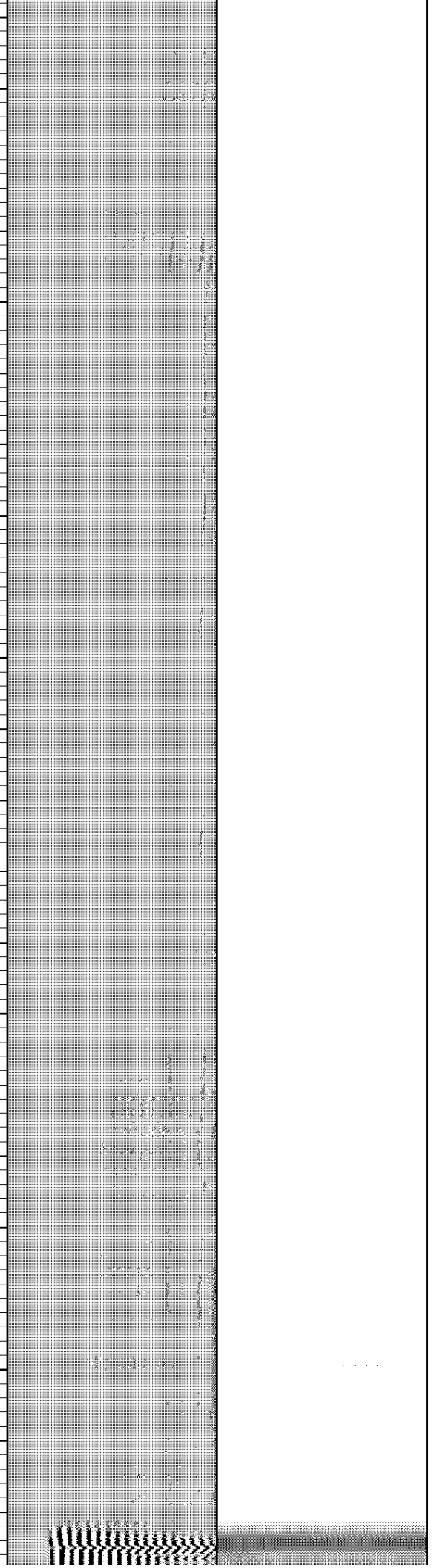
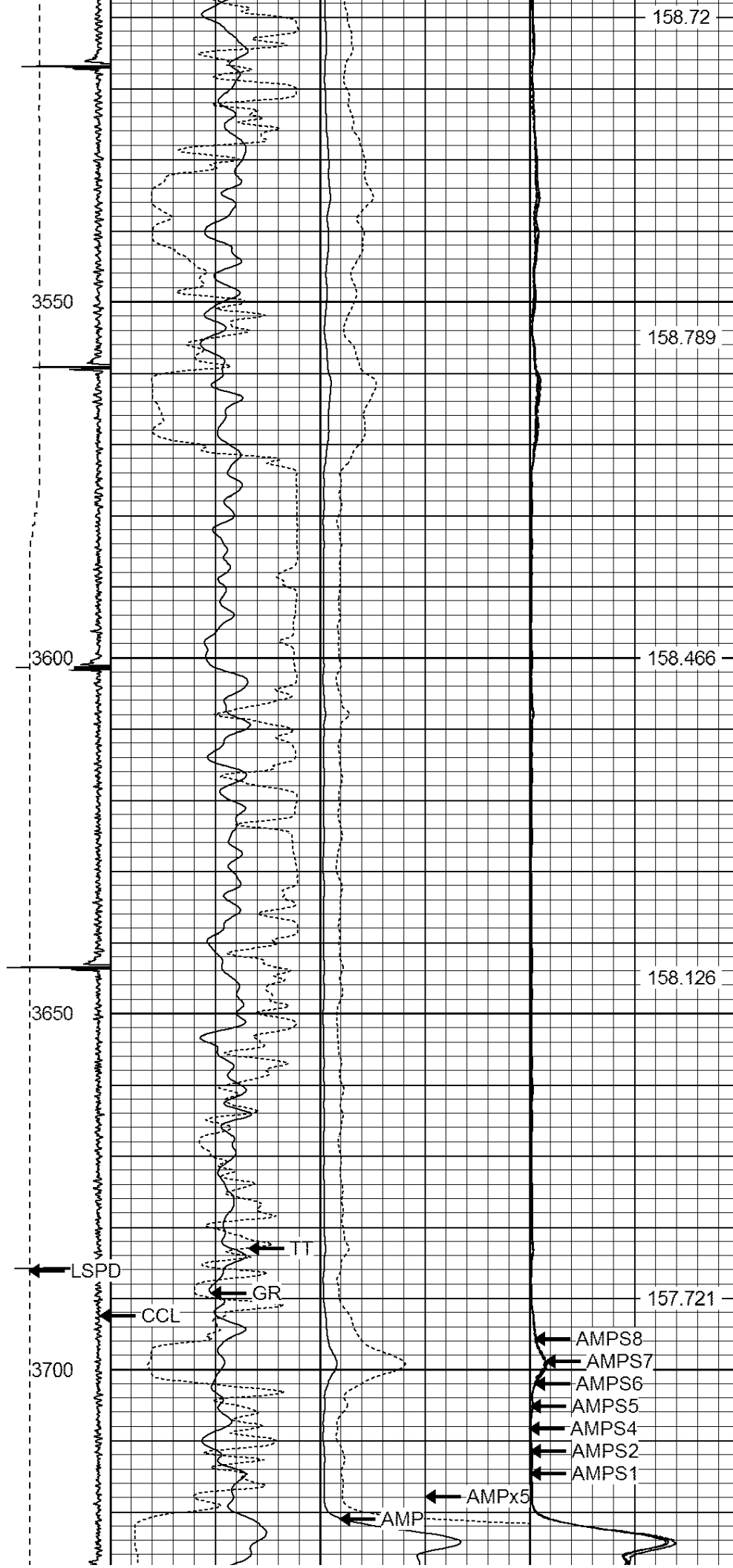
3500

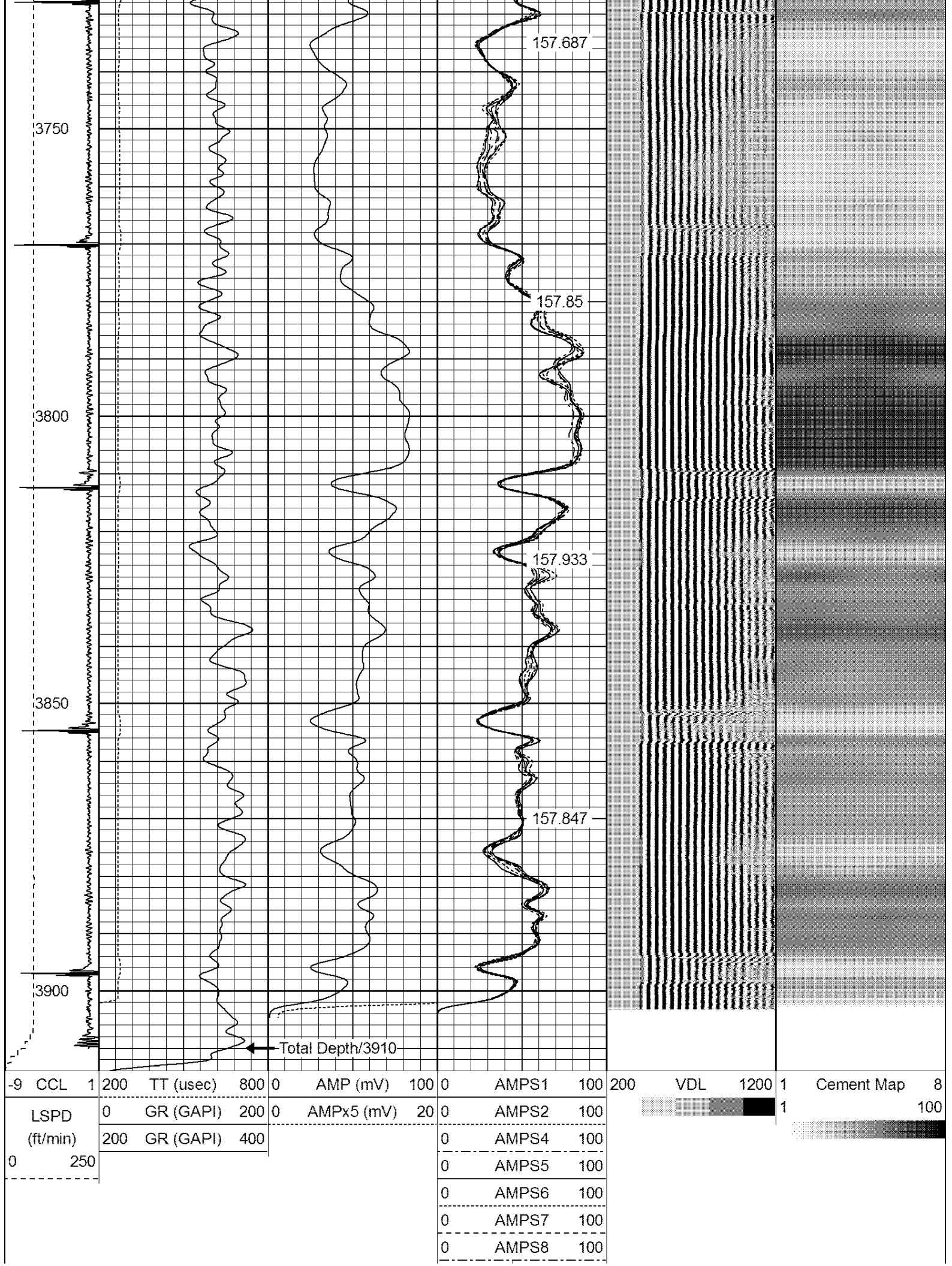
157.582

157.863

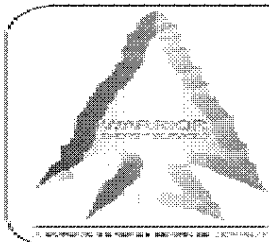
158.144

158.448





IntTemp
(degF)



WARRIOR
ENERGY SERVICES

Company KERR-McGEE OIL & GAS ONSHORE LP

Well USA 19-36

Field WATTENBERG

County WELD

State COLORADO