

1996 Alum. Cap,
#17669, 0.6' Below
Ground, in Range Box
Lat: 39.681744°
Long: 104.603444°

WELL LOCATION PLAT

T4S, R64W, 6th P.M.

Alum. Cap,
#28285
Lat: 39.681475°
Long: 104.584100°

Well location, WATKINS #30-5-5H, located as
shown in LOT 1 of Section 30, T4S, R64W, 6th
P.M., Arapahoe County, Colorado.

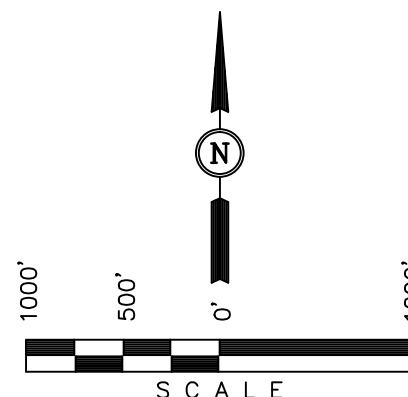
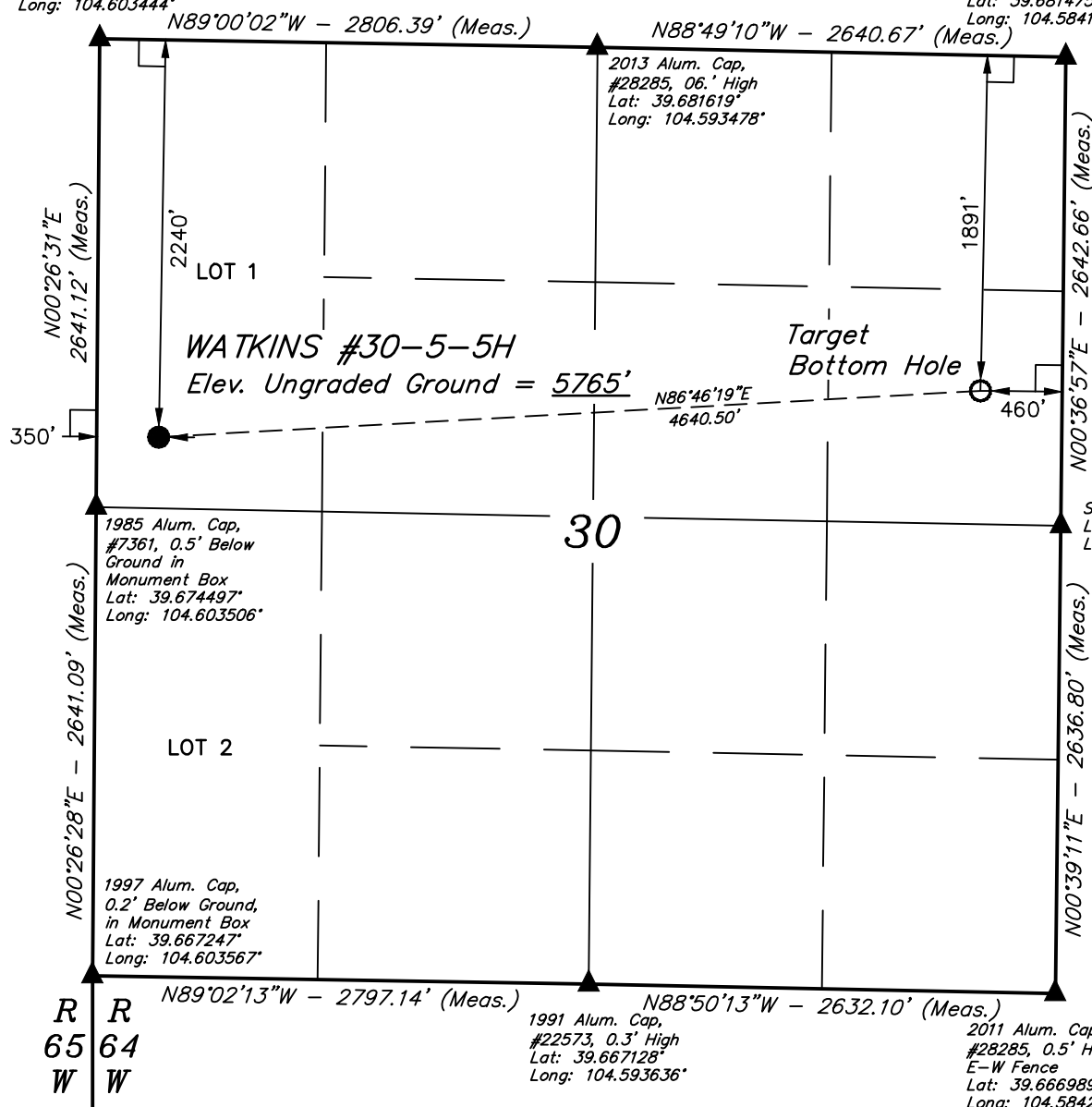
ConocoPhillips Company

BASIS OF ELEVATION

BENCHMARK 374 LOCATED ON THE SECTION LINE BETWEEN
SECTIONS 12 & 13, T5S, R64W, 6th. P.M., TAKEN FROM 1988
PUBLISHED DATUM BY THE UNITED STATES DEPARTMENT OF
THE INTERIOR, GEOLOGICAL SURVEY AS BEING 6054.61 FEET.

BASIS OF BEARINGS

BASIS OF BEARINGS IS A G.P.S. OBSERVATION.



CERTIFICATION

THIS IS TO CERTIFY THAT THE ABOVE PLAT WAS PREPARED FROM
FIELD NOTES OF ACTUAL SURVEYS MADE BY ME OR UNDER MY
SUPERVISION AND THAT THE SAME ARE TRUE AND CORRECT TO THE
BEST OF MY KNOWLEDGE AND BELIEF.

REGISTERED LAND SURVEYOR
REGISTRATION NO. 28285
STATE OF COLORADO
09-15-13

UINTAH ENGINEERING & LAND SURVEYING
85 SOUTH 200 EAST - VERNAL, UTAH 84078
(435) 789-1017

LEGEND:

- └─┘ = 90° SYMBOL
- = PROPOSED WELL HEAD.
- ▲ = SECTION CORNERS LOCATED.

NAD 83 (TARGET BOTTOM HOLE)	NAD 83 (SURFACE HOLE)
LATITUDE = 39°40'34.72" (39.676311)	LATITUDE = 39°40'32.09" (39.675581)
LONGITUDE = 104°35'08.87" (104.585797)	LONGITUDE = 104°36'08.11" (104.602253)
NAD 27 (TARGET BOTTOM HOLE)	NAD 27 (SURFACE HOLE)
LATITUDE = 39°40'34.77" (39.676325)	LATITUDE = 39°40'32.14" (39.675594)
LONGITUDE = 104°35'06.99" (104.585275)	LONGITUDE = 104°36'06.23" (104.601731)

PDOP = 3.2

SCALE 1" = 1000'	DATE SURVEYED: 09-30-13	DATE DRAWN: 10-08-13
PARTY D.N. G.W. J.W.	REFERENCES G.L.O. PLAT	
WEATHER WARM	FILE ConocoPhillips Company	

1996 Alum. Cap,
#17669, 0.6' Below
Ground, in Range Box
Lat: 39.681744°
Long: 104.603444°

SECTION BREAKDOWN T4S, R64W, 6th P.M.

Alum. Cap,
#28285
Lat: 39.681475°
Long: 104.584100°

ConocoPhillips Company

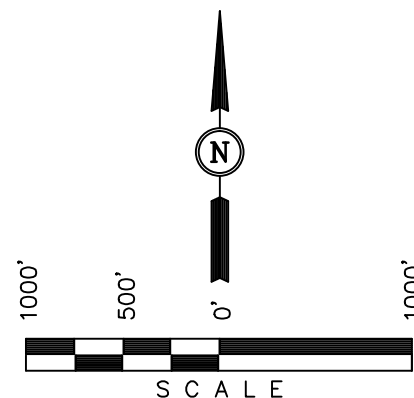
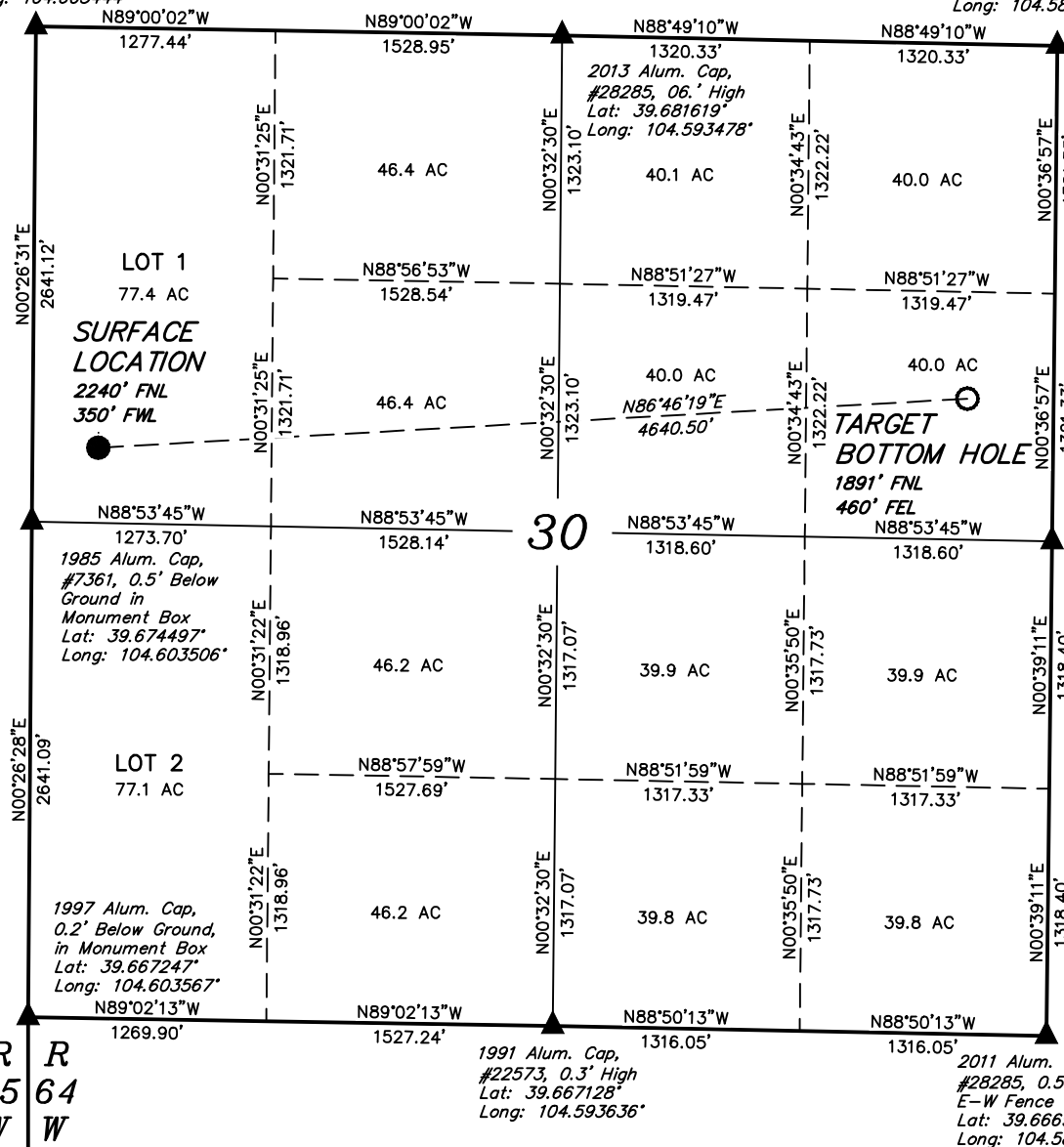
Well location, WATKINS #30-5-5H, located as
shown in LOT 1 of Section 30, T4S, R64W, 6th
P.M., Arapahoe County, Colorado.

BASIS OF ELEVATION

BENCHMARK 374 LOCATED ON THE SECTION LINE BETWEEN
SECTIONS 12 & 13, T5S, R64W, 6th. P.M., TAKEN FROM 1988
PUBLISHED DATUM BY THE UNITED STATES DEPARTMENT OF
THE INTERIOR, GEOLOGICAL SURVEY AS BEING 6054.61 FEET.

BASIS OF BEARINGS

BASIS OF BEARINGS IS A G.P.S. OBSERVATION.



CERTIFICATION

THIS IS TO CERTIFY THAT THE ABOVE PLAT WAS PREPARED FROM
FIELD NOTES OF ACTUAL SURVEYS MADE BY ME OR UNDER MY
SUPERVISION AND THAT THE SAME ARE TRUE AND CORRECT TO THE
BEST OF MY KNOWLEDGE AND BELIEF.

REGISTERED LAND SURVEYOR
REGISTRATION NO. 28285
STATE OF COLORADO
09-15-13

UINTAH ENGINEERING & LAND SURVEYING
85 SOUTH 200 EAST - VERNAL, UTAH 84078
(435) 789-1017

LEGEND:

- = 90° SYMBOL
- = PROPOSED WELL HEAD.
- ▲ = SECTION CORNERS LOCATED.

NAD 83 (TARGET BOTTOM HOLE)	NAD 83 (SURFACE HOLE)
LATITUDE = 39°40'34.72" (39.676311)	LATITUDE = 39°40'32.09" (39.675581)
LONGITUDE = 104°35'08.87" (104.585797)	LONGITUDE = 104°36'08.11" (104.602253)
NAD 27 (TARGET BOTTOM HOLE)	NAD 27 (SURFACE HOLE)
LATITUDE = 39°40'34.77" (39.676325)	LATITUDE = 39°40'32.14" (39.675594)
LONGITUDE = 104°35'06.99" (104.585275)	LONGITUDE = 104°36'06.23" (104.601731)

SCALE 1" = 1000'	DATE SURVEYED: 09-30-13	DATE DRAWN: 10-08-13
PARTY D.N. G.W. J.W.	REFERENCES G.L.O. PLAT	
WEATHER WARM	FILE ConocoPhillips Company	