



410 17th Street, Suite 1500  
Denver, CO 80202  
(720) 440-6100 phone  
(720) 305-0804 fax

[Bonanzacrk.com](http://Bonanzacrk.com)

November 27, 2013

Colorado Oil and Gas Conservation Commission  
The Chancery Building  
1120 Lincoln Street, Suite 801  
Denver, CO 80203

Attn: Director Matt Lepore

Re: Notice of 318A.a.(4)D. Horizontal Wellbore Spacing Unit Proposal  
State Seventy Holes A11-E14-3HNB  
SHL: NWNW Sec 3-4N-62W, 6<sup>TH</sup> PM  
Top of Production: NWNW Sec 3-4N-62W, 6<sup>TH</sup> PM  
Bottom of Production: SWSW Sec 3-4N-62W, 6<sup>TH</sup> PM  
Weld County, Colorado

Director Lepore:

Bonanza Creek Energy, Inc. (Bonanza) intends to permit, drill and operate the referenced Niobrara horizontal well. As defined by Colorado Oil and Gas Conservation Commission (COGCC) Rule 318A(I).a.(4)D., Bonanza proposes the following wellbore spacing unit:

4N-62W-Section 3 W/2W/2 and 4N-62W-Section 4 E/2E/2 containing 320 acres more or less

Bonanza has notified the other owners in the unit and no objections were received. Copies of the notifications are maintained in Bonanza's files.

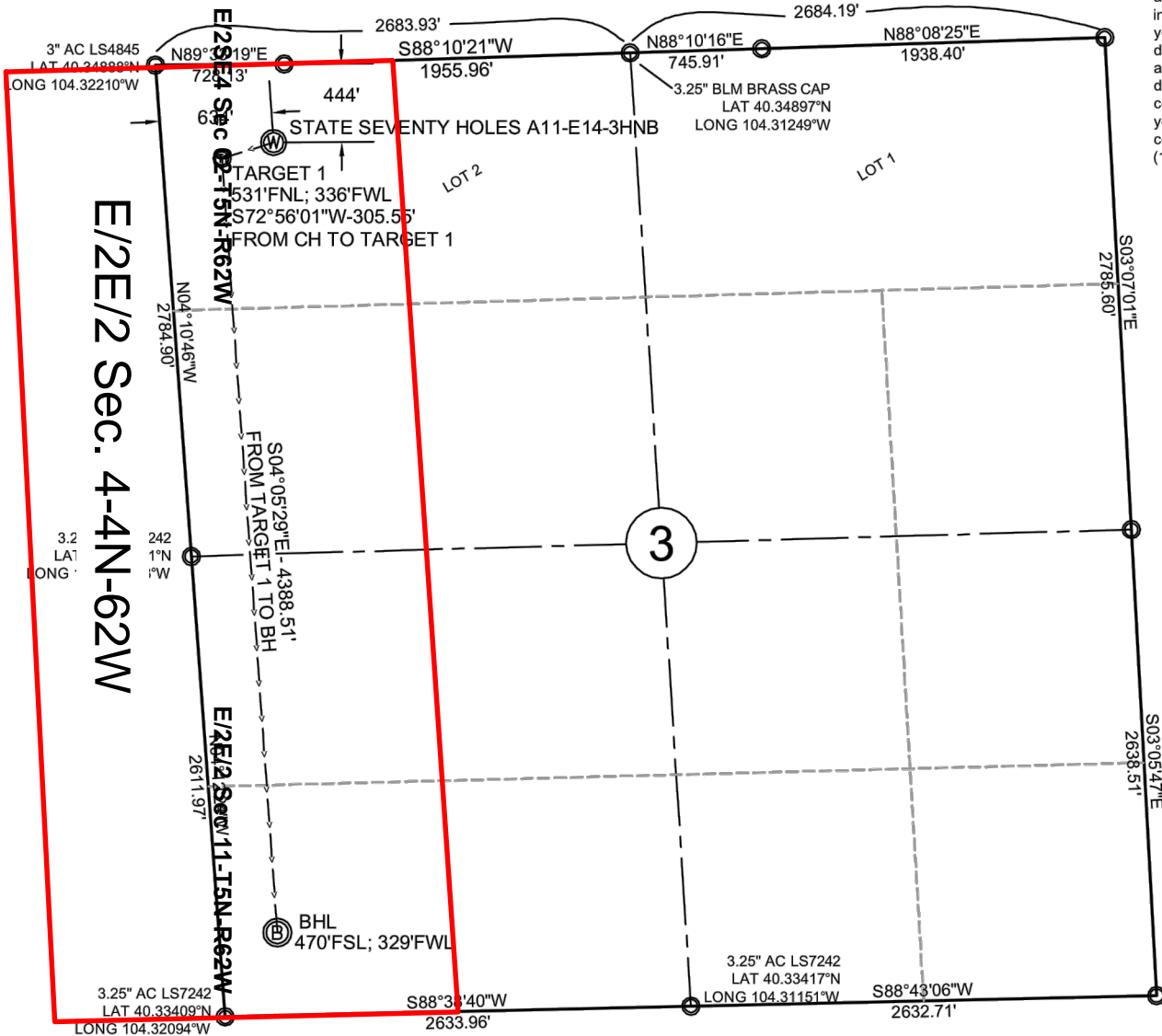
Bonanza respectfully requests that you review the enclosed wellbore spacing unit documentation and approve the referenced APD.

Please do not hesitate to call or email me at (720) 440-6100 or [REdelen@BonanzaCrk.com](mailto:REdelen@BonanzaCrk.com), should you have any questions pertaining to this matter.

Thank you for your cooperation.

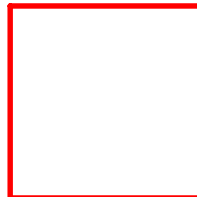
Sincerely,

Randy Edelen, P. E.  
Regulatory Specialist  
BONANZA CREEK ENERGY, INC.  
BONANZA CREEK ENERGY OPERATING COMPANY, LLC



- All bearings are GRID based upon the Colorado State Plane Coordinate System, North Zone, NAD83(2011) derived from post-processed static GPS observations.
- Distances are at GROUND
- Vertical Datum is NAVD88 based upon GPS observations
- PDOP value equals 1.6.
- GPS operator: Dave Fehringer.
- Undisturbed ground elevation at wellhead = 4533.7'

I, David A. Fehringer of Lander, Wyoming hereby certify that this well location certificate was prepared from notes taken during an actual survey on SEPTEMBER 29, 2013, and that it correctly shows the drilling location of BONANZA CREEK ENERGY, INC., STATE SEVENTY HOLES A11-E14-3HNB as staked during said survey. This map does not represent a boundary survey or an improvement location plat and should not be used for the



## Wellbore Spacing Unit Outline



# Wellbore Spacing Unit Map

26 November 2013 ksc

State Seventy Holes A11-E14-3HNB  
W/2W/2 Sec 3-T4N-R62W 6th PM  
E/2E/2 Sec 4-T4N-R62W 6th PM  
Weld County, Colorado