



Cathedral
1949 Pyrite Rd. Casper, Wy 82601

135364

5":100' - MD
8/24/2013 9:59:46 AM

Oper. Company: Encana
Country: Weld
State / Province: Colo
County / Parish: US
Started: 08/22/2013 03:30 PM

API/UWI: 051233744200
Field: DJ Basin
Well: Marcus State3B-36H
Rig: Ensign 135
Ended: 08/24/2013 03:30 AM

Personnel

Day Hand: Ken Wagoner
Night Hand: Corey Horkan
Comp. Emp: Cathedral Energy Service

Location

Latitude: 40.088280
Longitude: -104.730110
Elev. GL: 5039
Elev. DF: 5052
Elev. KB: 5052

Hole Data

Size	From	To
6.125	7710	11900

Casing Data

Size	From	To
7	1228	7710

Bit Sizes

Size	From	To
6.125	7710	11900

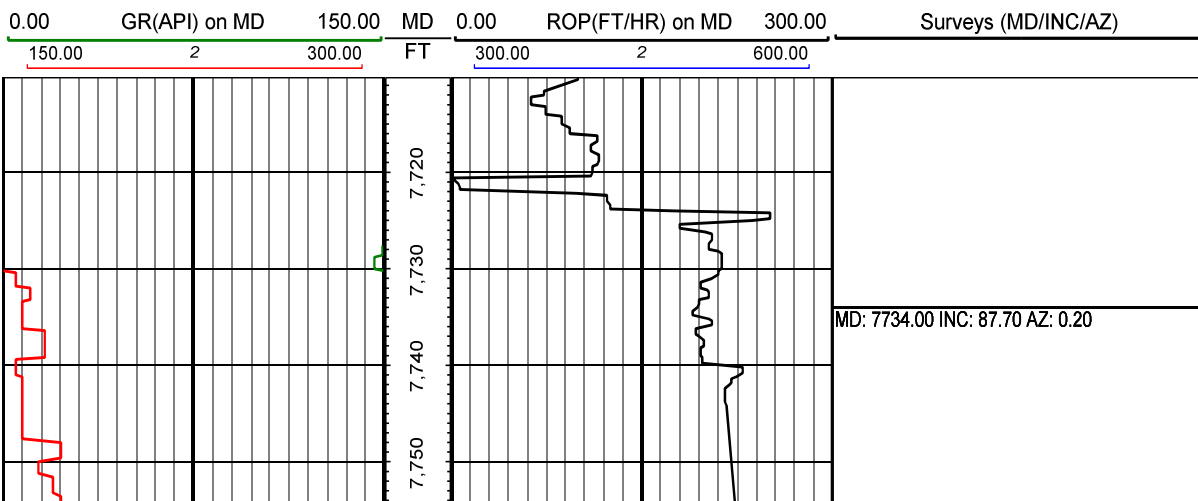
Mud Data

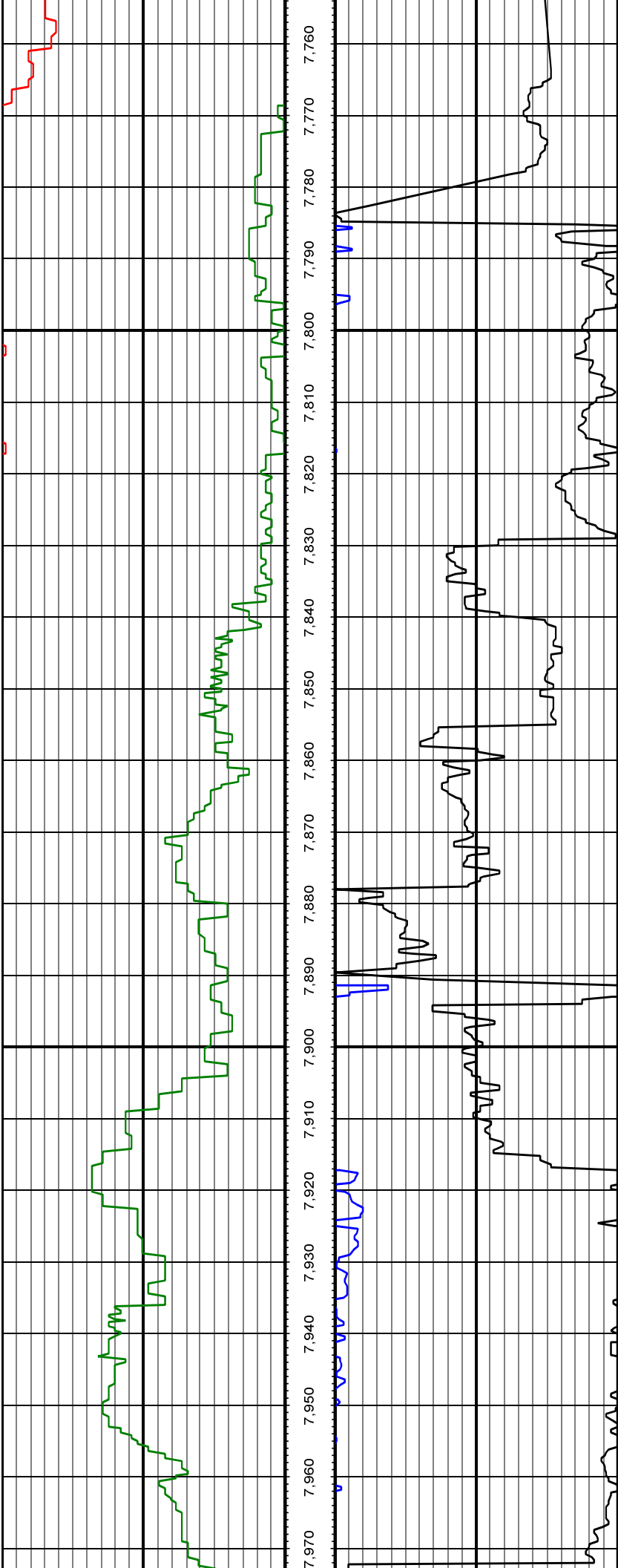
Type	Weight	Density	Viscosity	Rm	Rmf	Rmc	From	To
LSND	10.1	10.1	35.0				7710	11900

Tool Run Data

Serial Number	Gamma Offset	Resist. Offset	Start Time	Start Depth	End Time	End Depth
1125	35.97	0	8/22/2013 4:30:08 AM	7710	8/24/2013 3:30:08 AM	11900

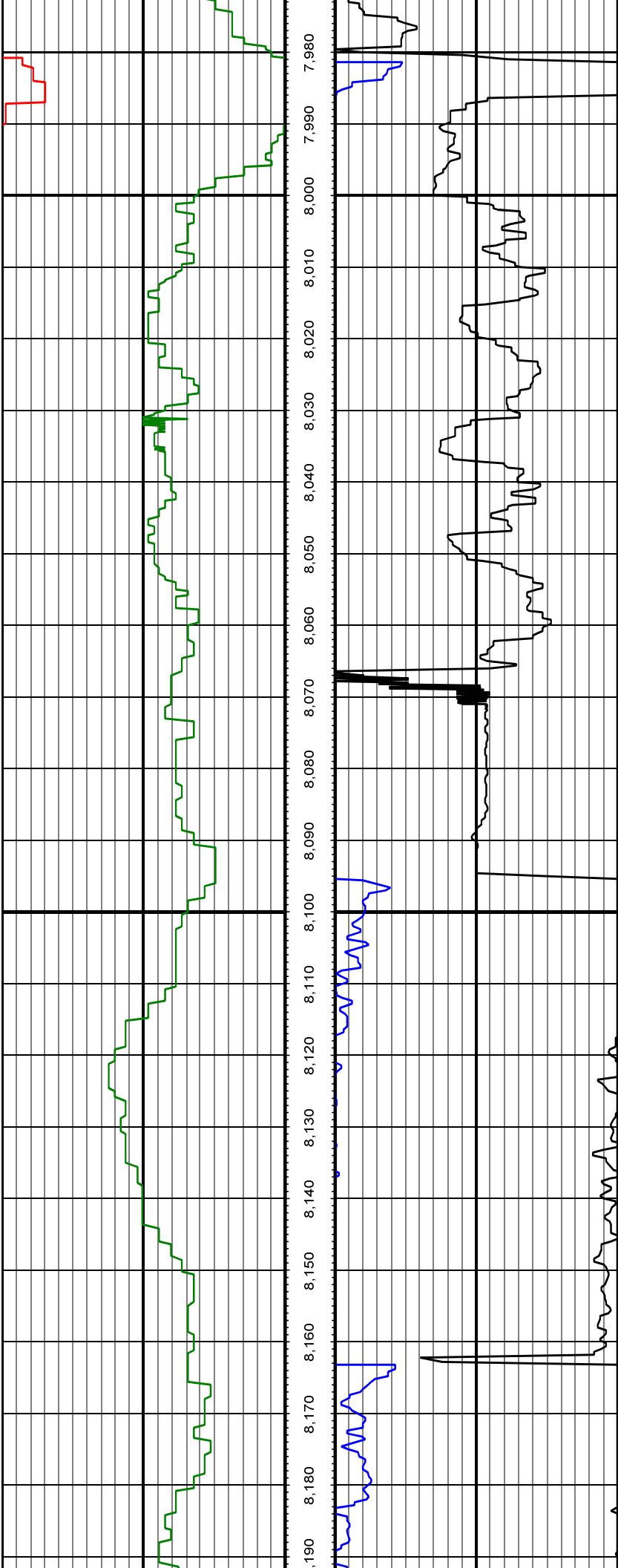
All interpretations are opinions based on inferences from electrical or other measurements and we cannot and do not guarantee the accuracy or correctness of any interpretation, and we shall not except in the case of gross or willful negligence on our part, be liable or responsible for any loss, cost damages or expenses incurred or sustained by anyone resulting from an interpretation made by any of our officers, agents, or employees.





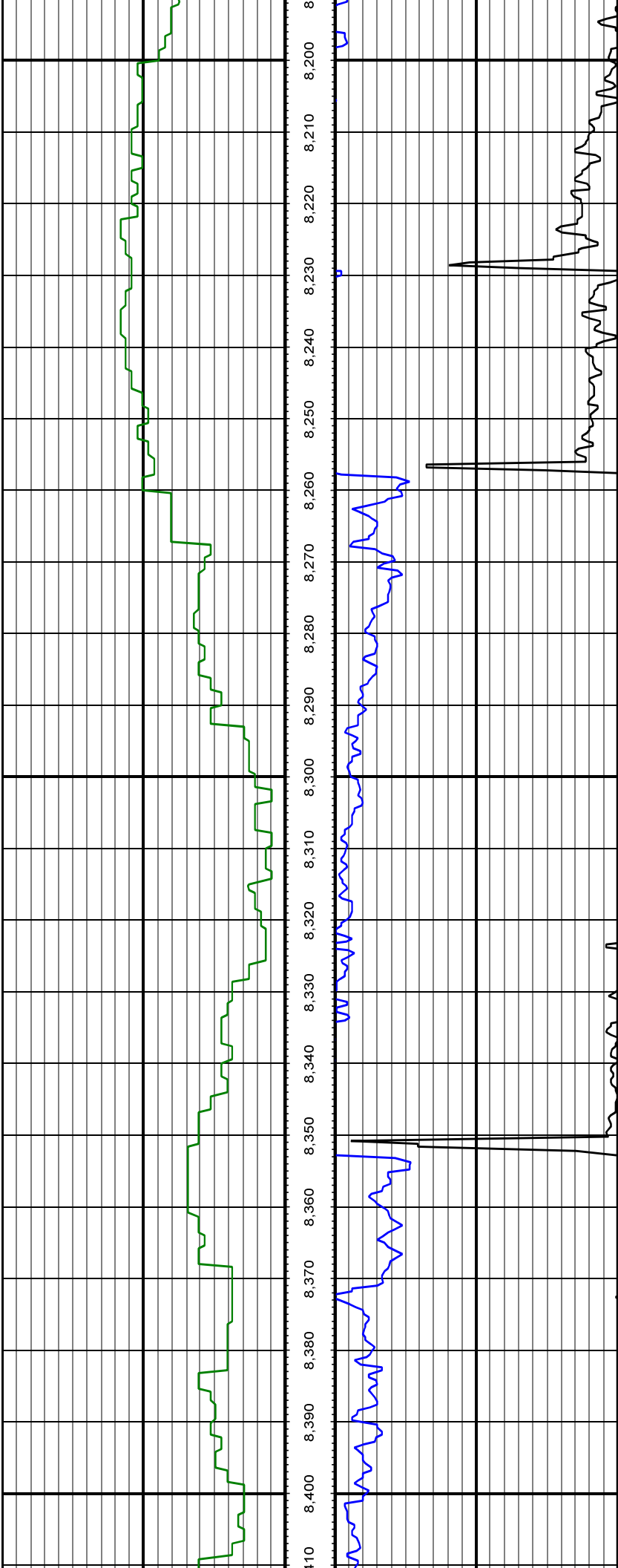
MD: 7828.00 INC: 86.30 AZ: 359.80

MD: 7923.00 INC: 87.30 AZ: 0.20



MD: 8018.00 INC: 88.50 AZ: 0.80

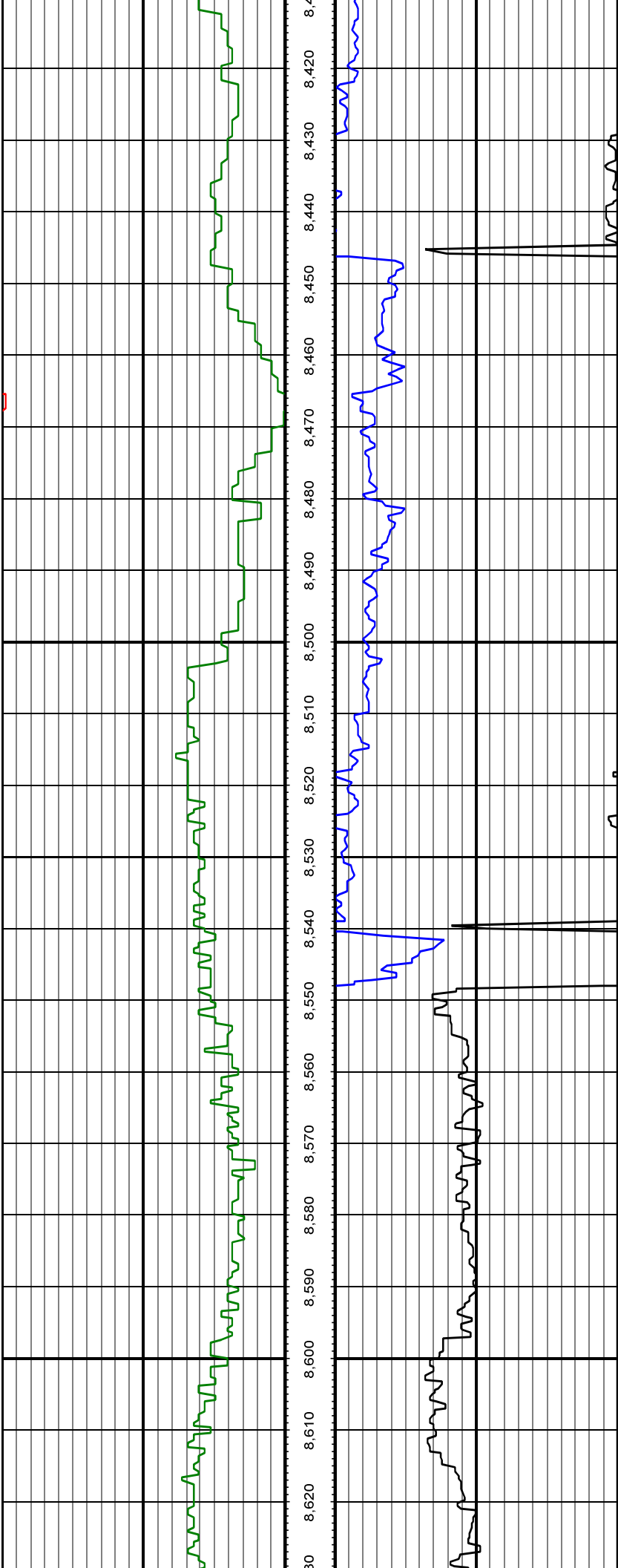
MD: 8112.00 INC: 88.60 AZ: 359.80



MD: 8207.00 INC: 88.80 AZ: 359.90

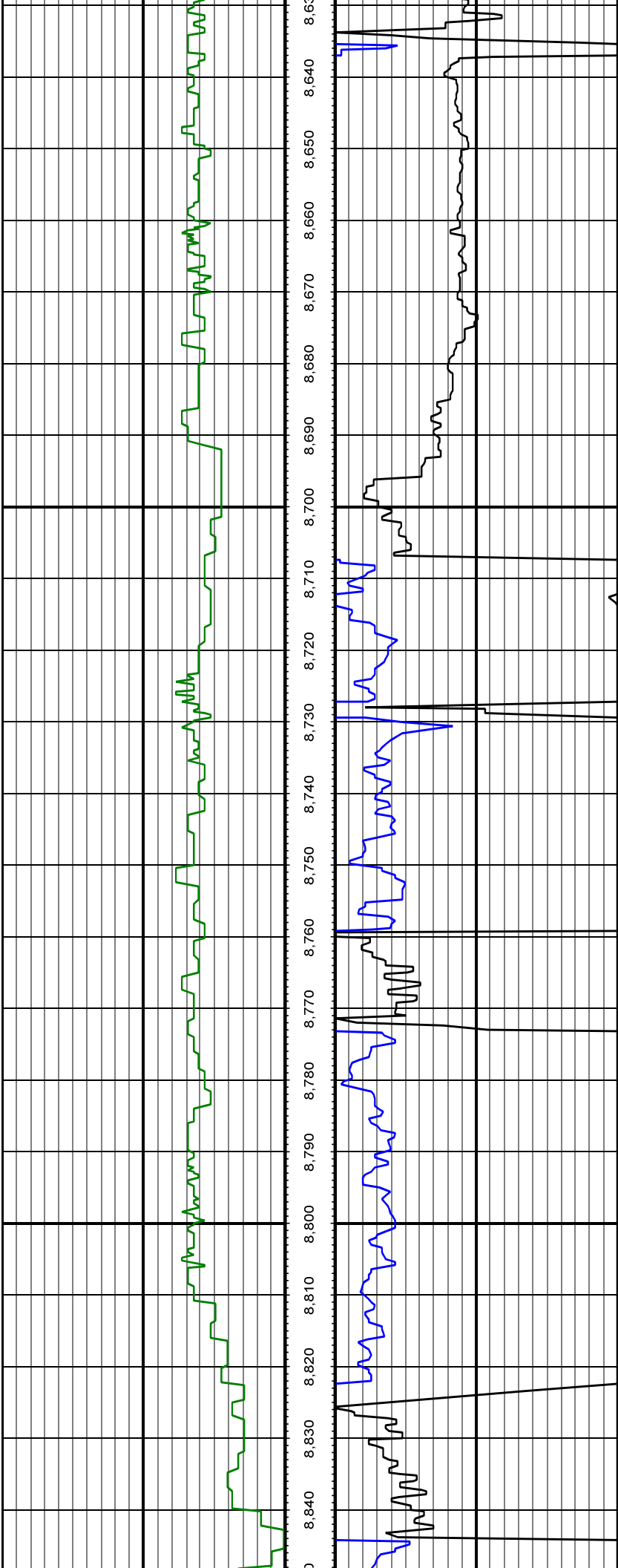
MD: 8302.00 INC: 88.80 AZ: 359.40

MD: 8397.00 INC: 88.70 AZ: 359.50



MD: 8492.00 INC: 88.80 AZ: 359.40

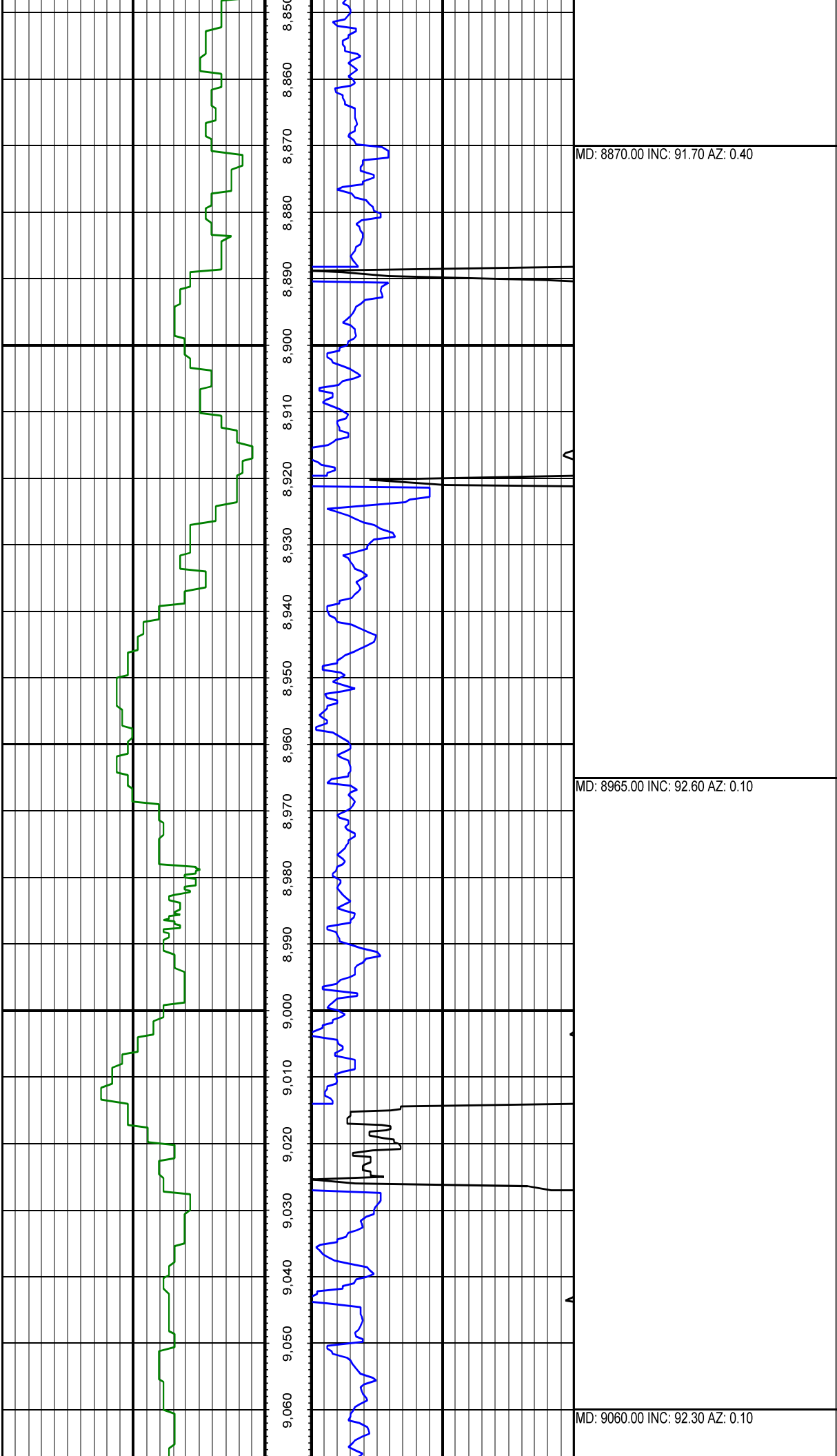
MD: 8586.00 INC: 90.20 AZ: 358.90

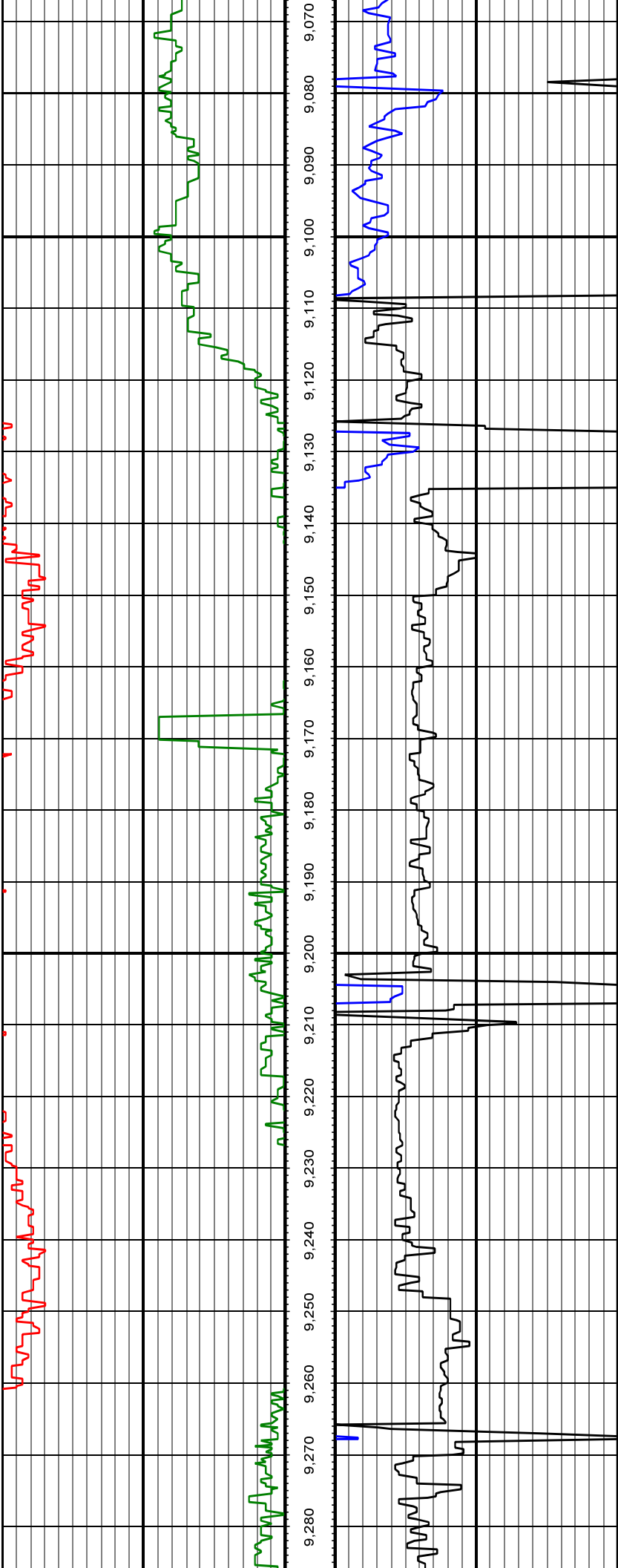


MD: 8649.00 INC: 89.50 AZ: 358.60

MD: 8713.00 INC: 89.60 AZ: 358.50

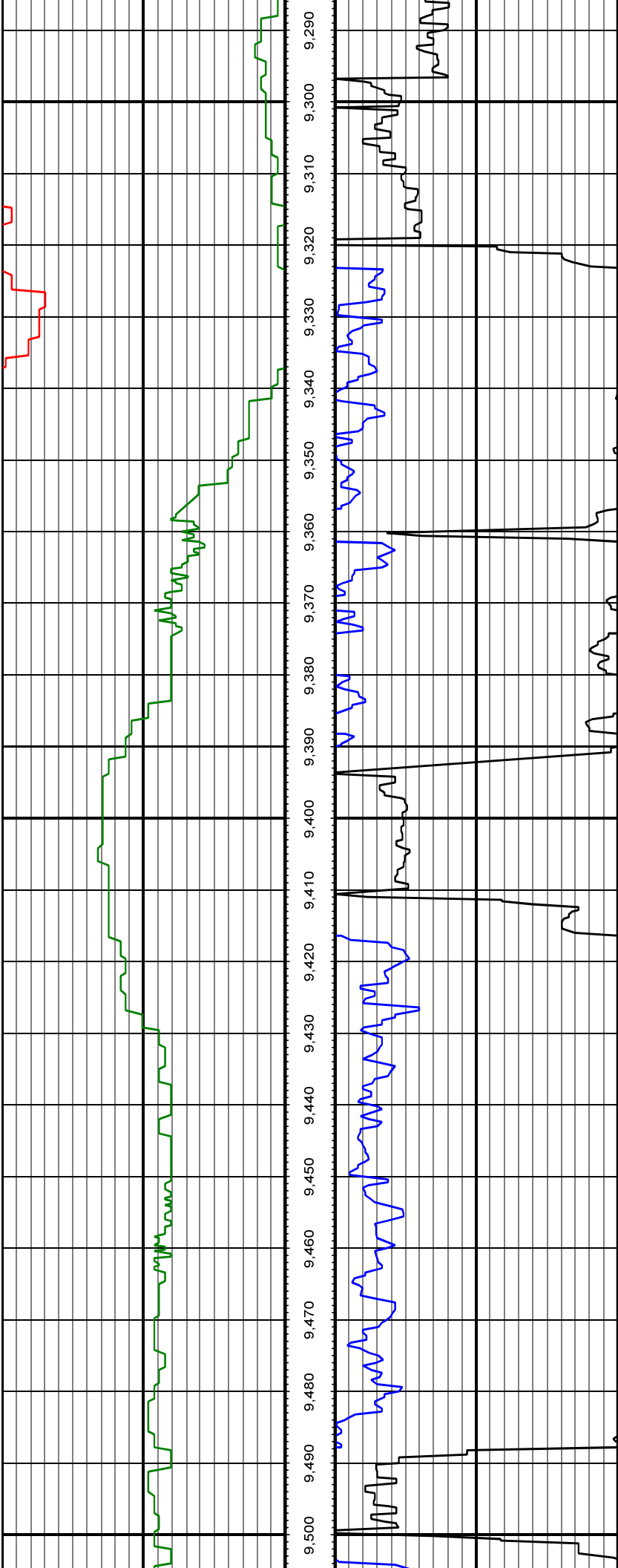
MD: 8776.00 INC: 89.90 AZ: 358.90





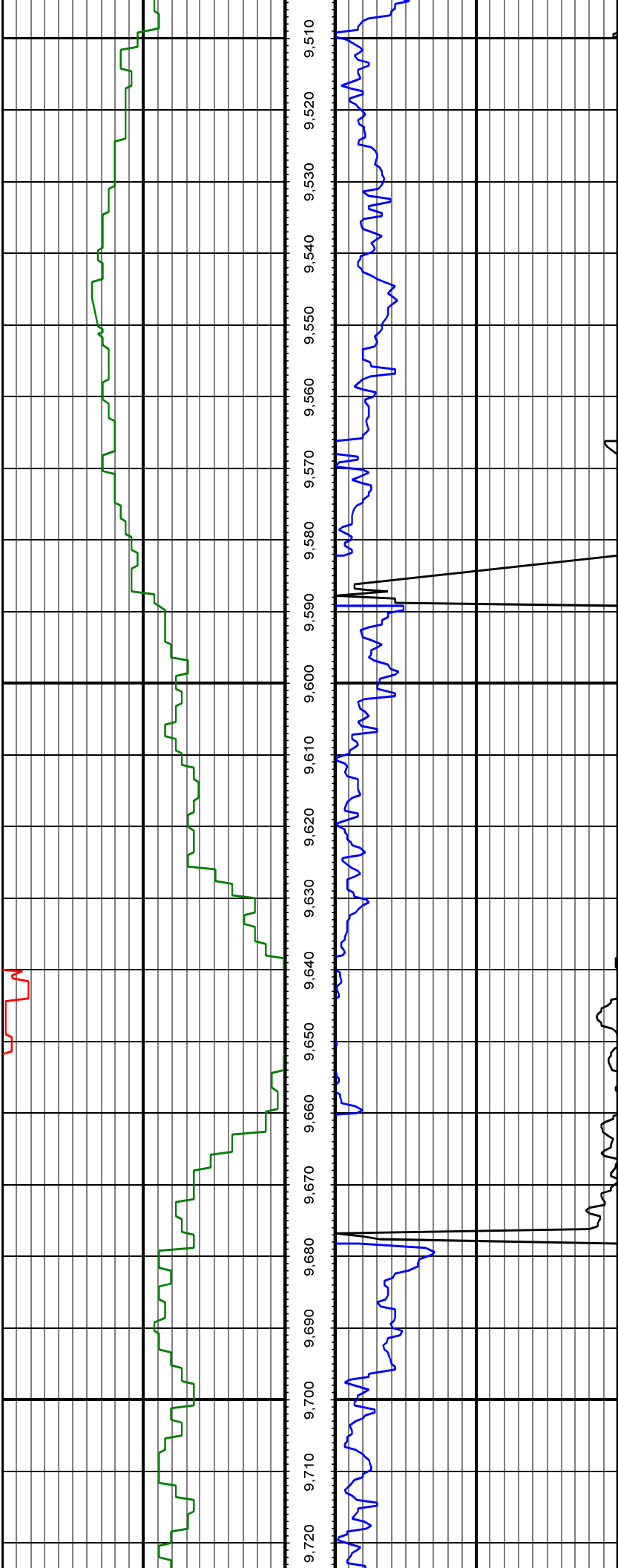
MD: 9155.00 INC: 90.90 AZ: 1.10

MD: 9249.00 INC: 89.60 AZ: 0.40



MD: 9344.00 INC: 92.20 AZ: 1.50

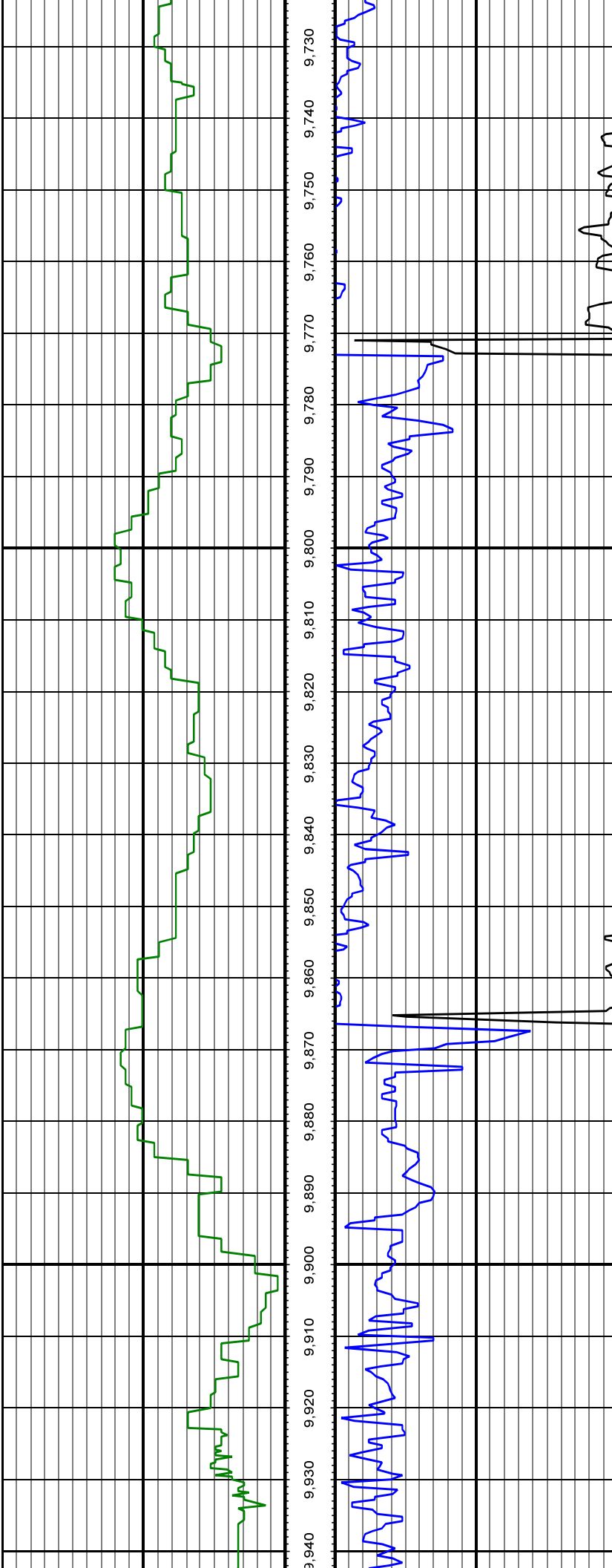
MD: 9439.00 INC: 90.70 AZ: 1.20



MD: 9534.00 INC: 89.10 AZ: 0.30

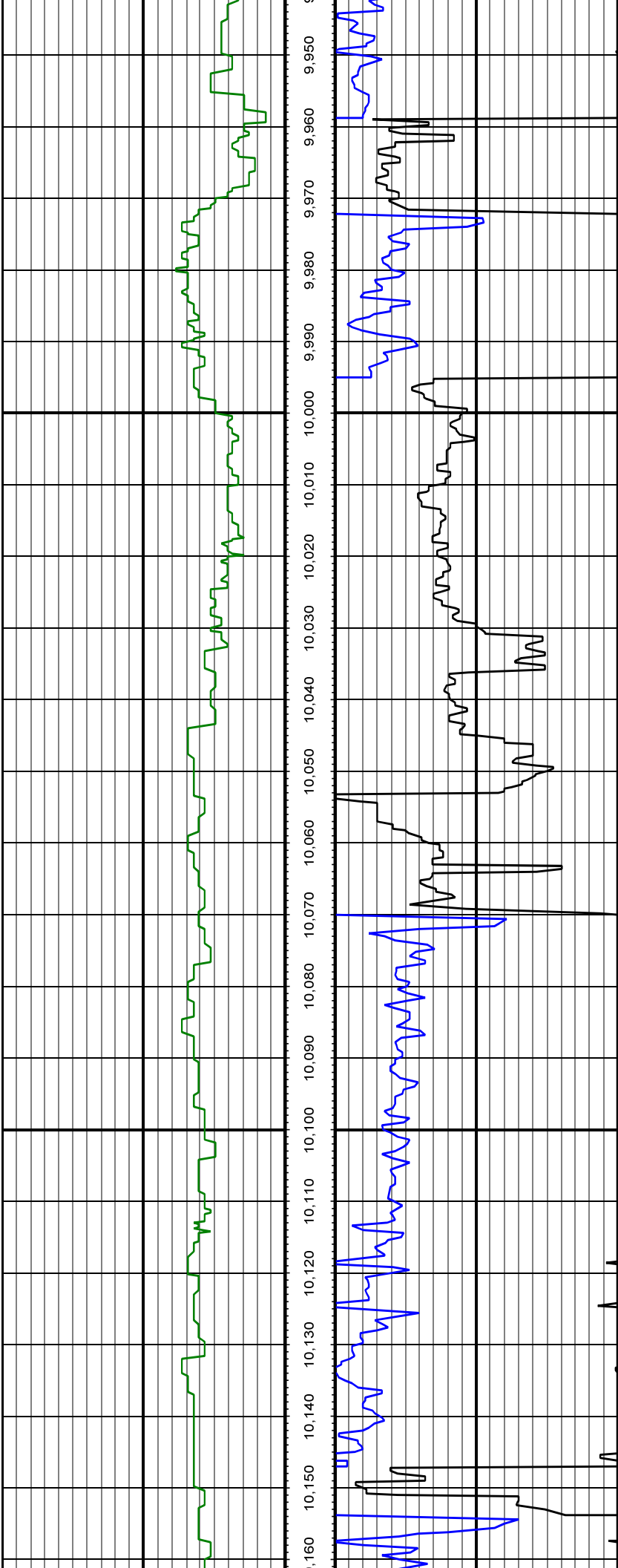
MD: 9628.00 INC: 88.30 AZ: 0.40

MD: 9723.00 INC: 88.20 AZ: 0.30



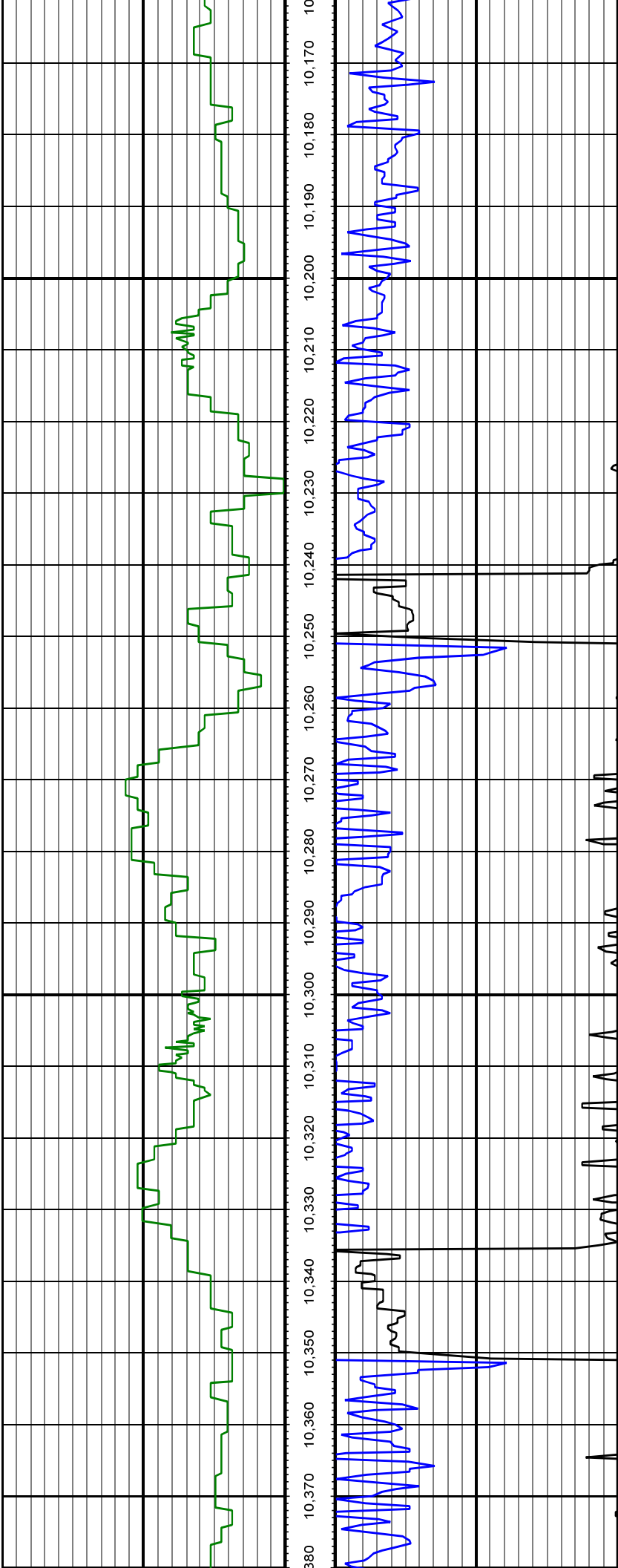
MD: 9818.00 INC: 88.00 AZ: 0.40

MD: 9912.00 INC: 87.60 AZ: 0.40



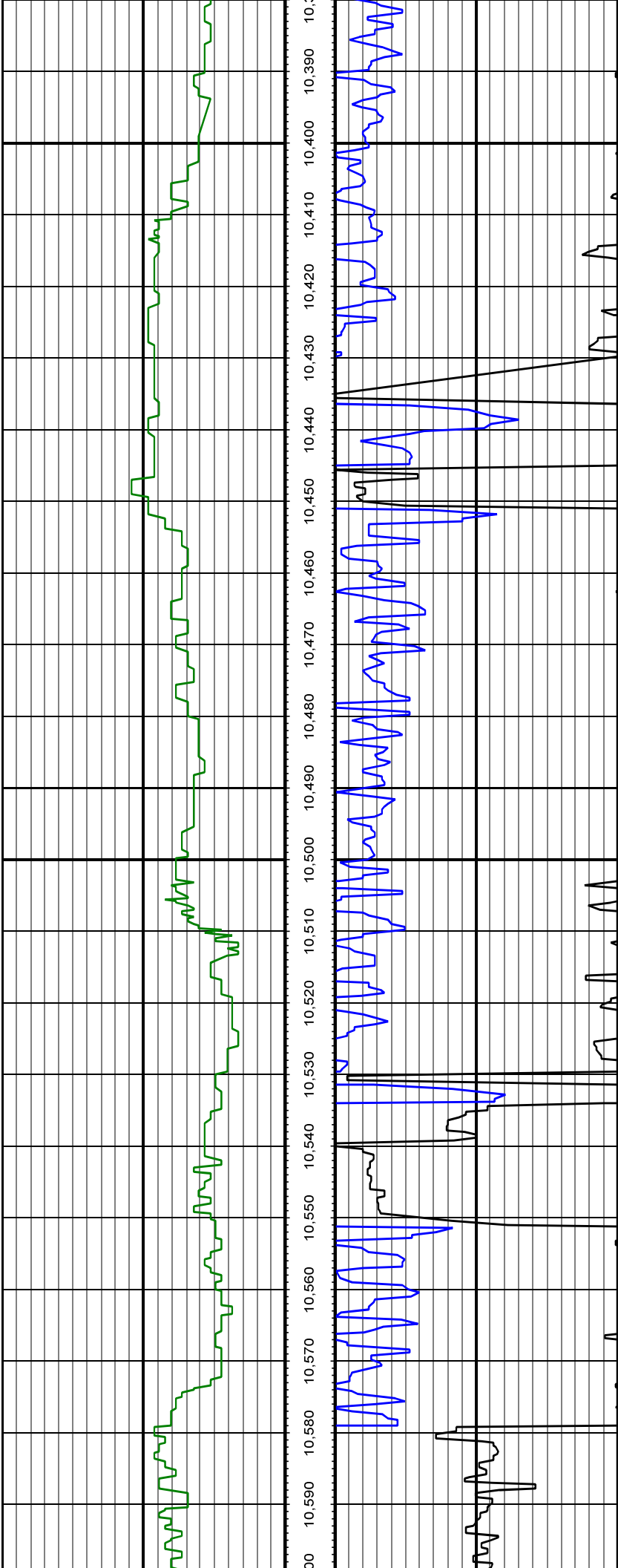
MD: 10007.00 INC: 88.50 AZ: 1.00

MD: 10101.00 INC: 90.30 AZ: 0.80



MD: 10196.00 INC: 91.30 AZ: 1.30

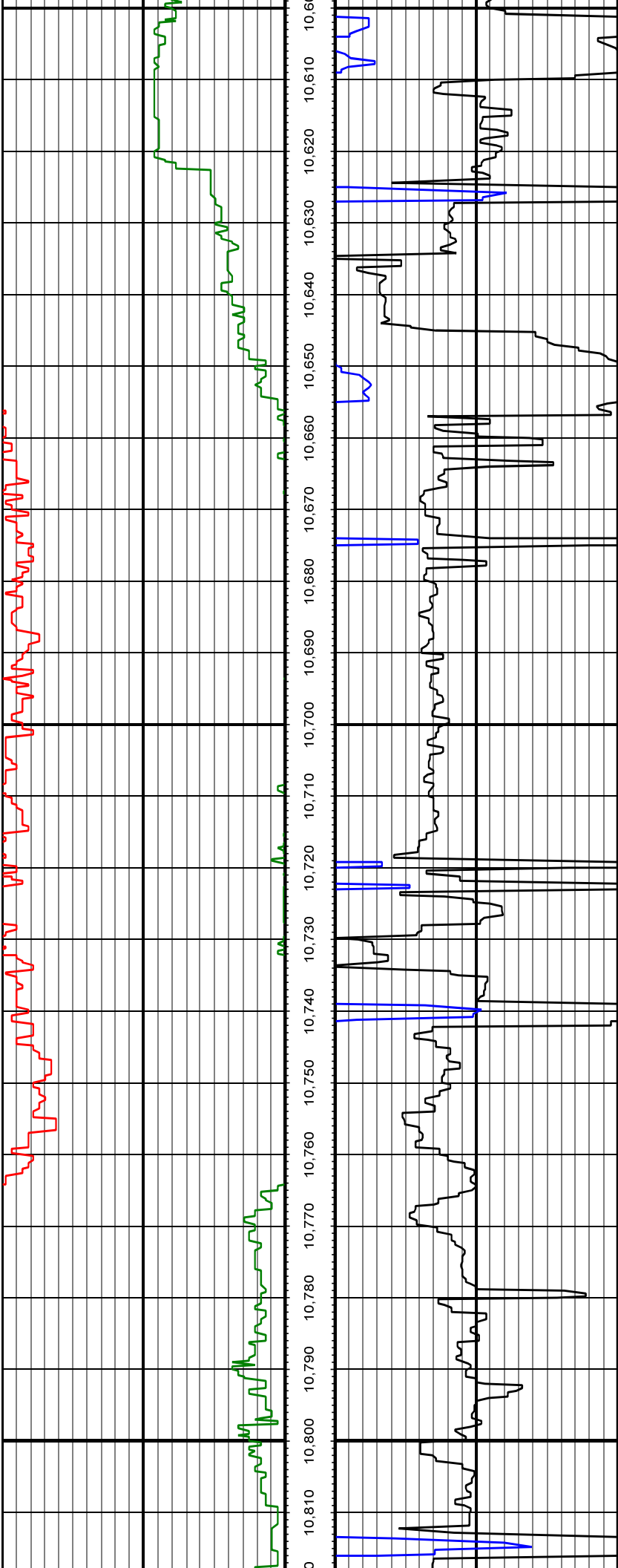
MD: 10291.00 INC: 91.70 AZ: 0.90



MD: 10385.00 INC: 90.30 AZ: 2.20

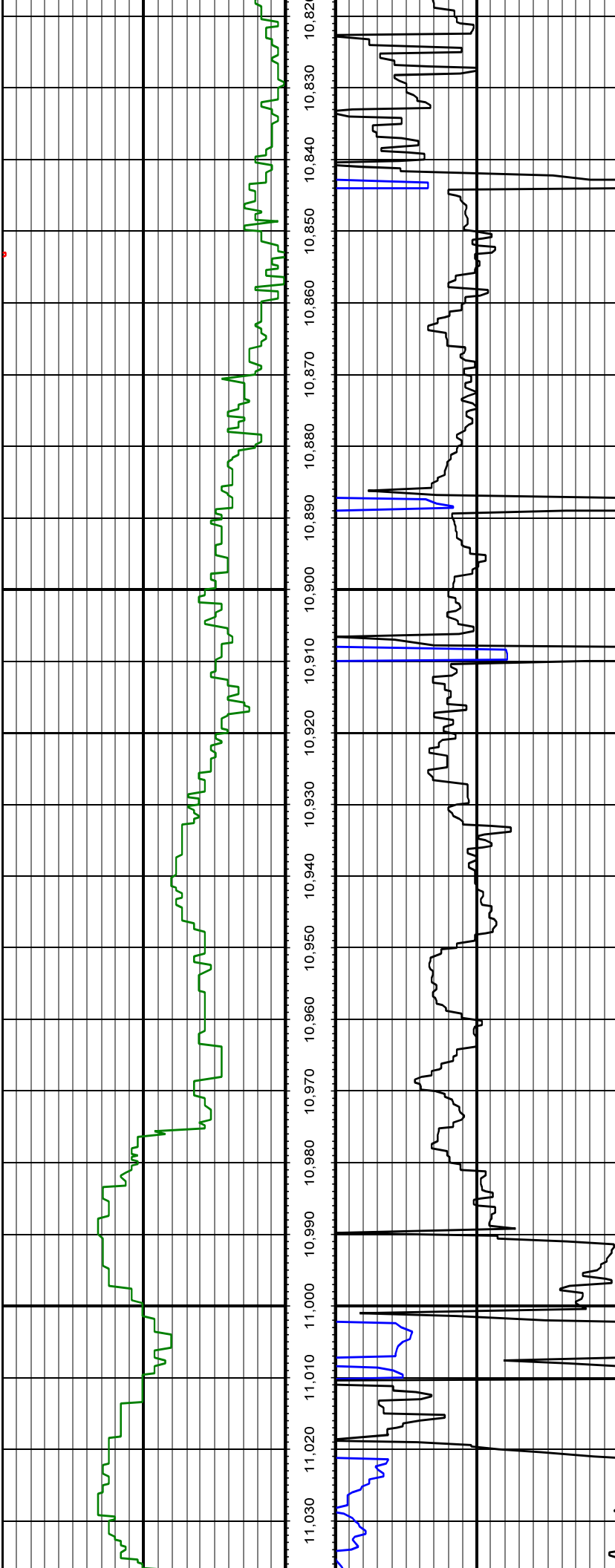
MD: 10480.00 INC: 88.00 AZ: 1.90

MD: 10575.00 INC: 88.20 AZ: 1.20



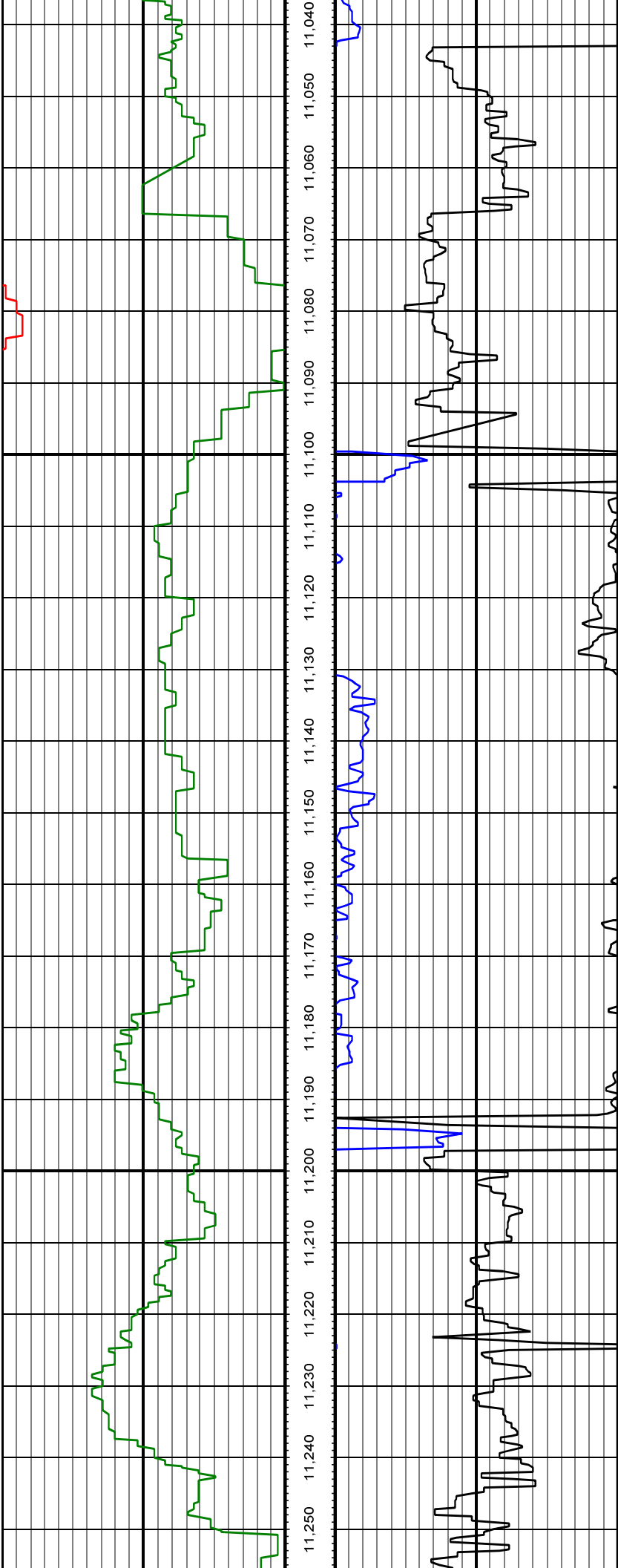
MD: 10670.00 INC: 89.20 AZ: 0.20

MD: 10764.00 INC: 89.10 AZ: 359.20



MD: 10859.00 INC: 88.50 AZ: 359.80

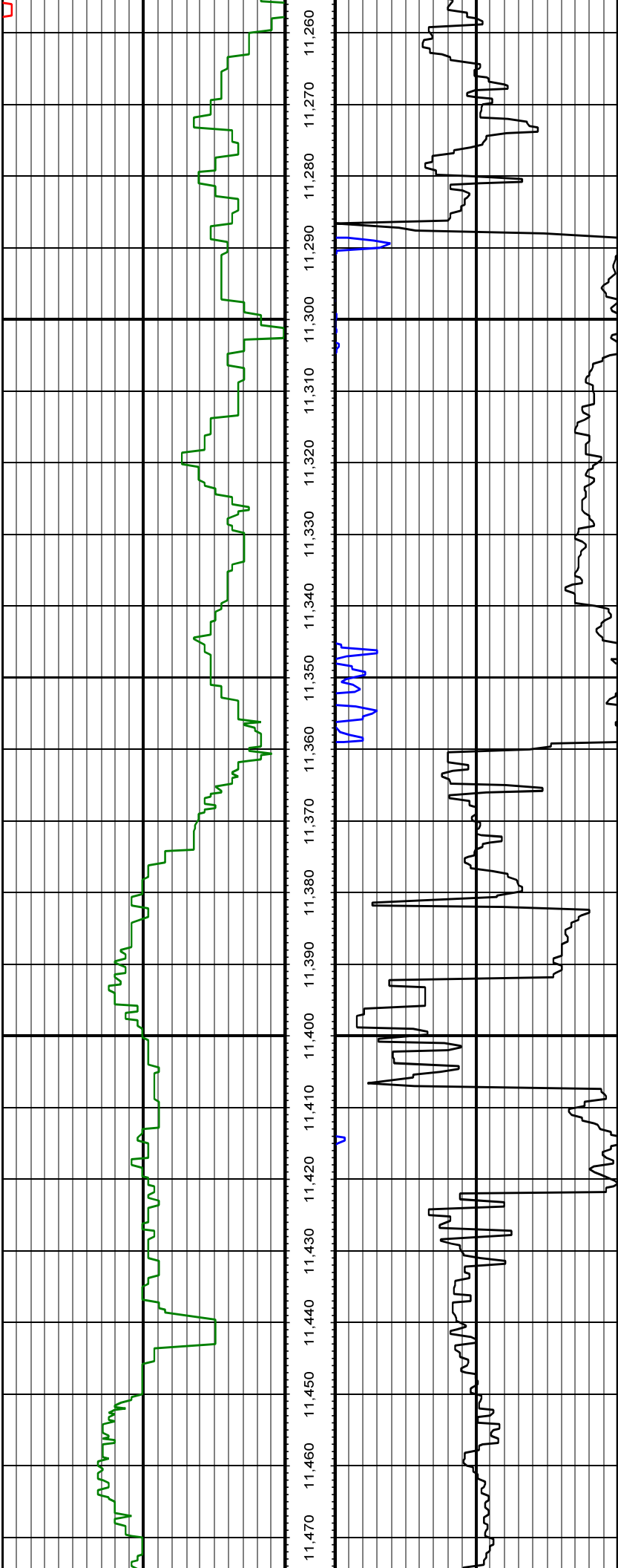
MD: 10954.00 INC: 87.70 AZ: 359.20



MD: 11048.00 INC: 89.00 AZ: 359.50

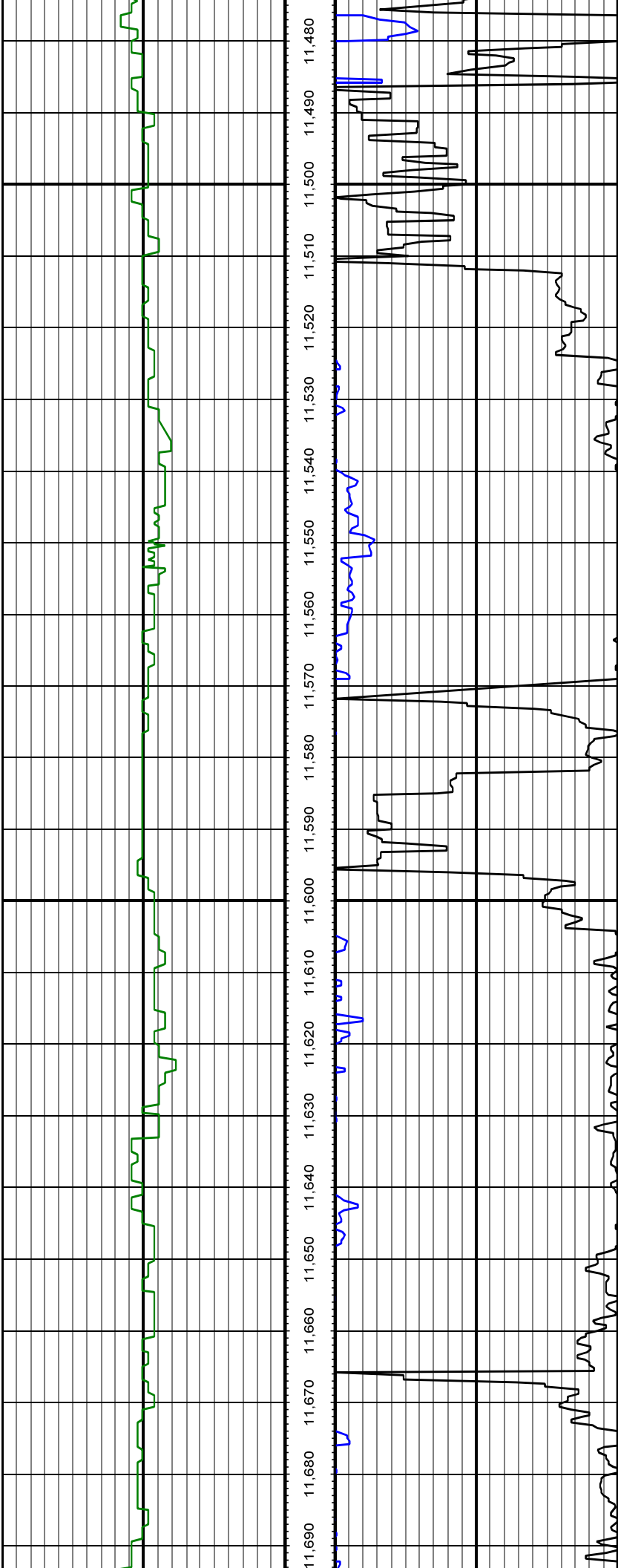
MD: 11143.00 INC: 88.70 AZ: 359.30

MD: 11238.00 INC: 88.40 AZ: 358.90



MD: 11332.00 INC: 87.60 AZ: 358.30

MD: 11427.00 INC: 87.30 AZ: 358.80



MD: 11522.00 INC: 89.60 AZ: 358.80

MD: 11617.00 INC: 92.10 AZ: 359.90

