



Cathedral  
1949 Pyrite Rd. Casper, Wy 82601

**135364**

5":100' - MD  
8/24/2013 9:58:28 AM

**Oper. Company:** Encana  
**Country:** Weld  
**State / Province:** Colo  
**County / Parish:** US  
**Started:** 08/19/2013 05:30 AM

**API/UWI:** 051233744200  
**Field:** DJ Basin  
**Well:** Marcus State3B-36H  
**Rig:** Ensign 135  
**Ended:** 08/20/2013 03:00 PM

### Personnel

**Day Hand:** Ken Wagoner  
**Night Hand:** Corey Horkan  
**Comp. Emp:** Cathedral Energy Service

### Location

**Latitude:** 40.088280  
**Longitude:** -104.730110  
**Elev. GL:** 5039  
**Elev. DF:** 5052  
**Elev. KB:** 5052

### Hole Data

Size	From	To
8.75	1228	7710

### Casing Data

Size	From	To
7	0	7698

### Bit Sizes

Size	From	To
8.75	1228	7710

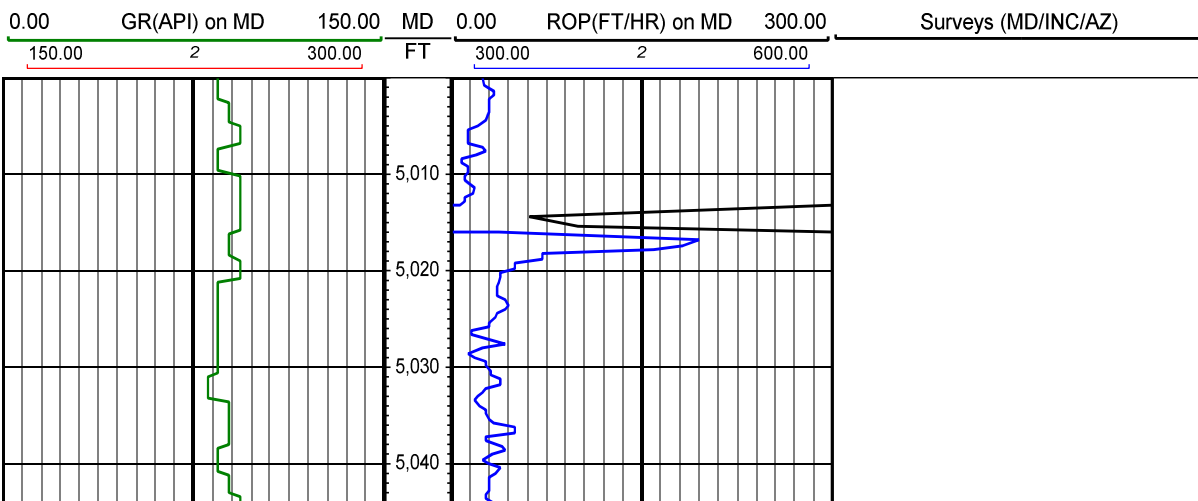
### Mud Data

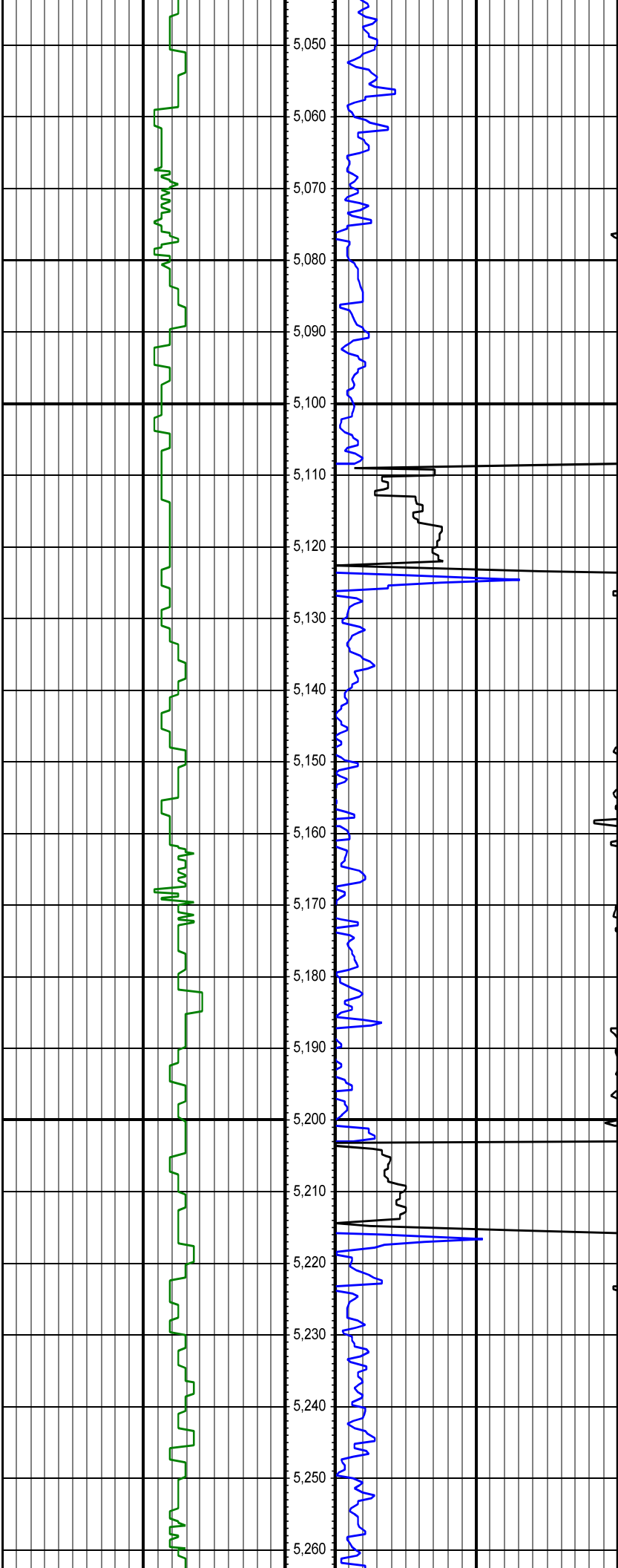
Type	Weight	Density	Viscosity	Rm	Rmf	Rmc	From	To
LSND	8.5	8.5	28				1228	7710

### Tool Run Data

Serial Number	Gamma Offset	Resist. Offset	Start Time	Start Depth	End Time	End Depth
235	41.46	0	8/17/2013 12:00:19 AM	1228	8/21/2013 2:30:19 AM	7710

*All interpretations are opinions based on inferences from electrical or other measurements and we cannot and do not guarantee the accuracy or correctness of any interpretation, and we shall not except in the case of gross or willful negligence on our part, be liable or responsible for any loss, cost damages or expenses incurred or sustained by anyone resulting from an interpretation made by any of our officers, agents, or employees.*

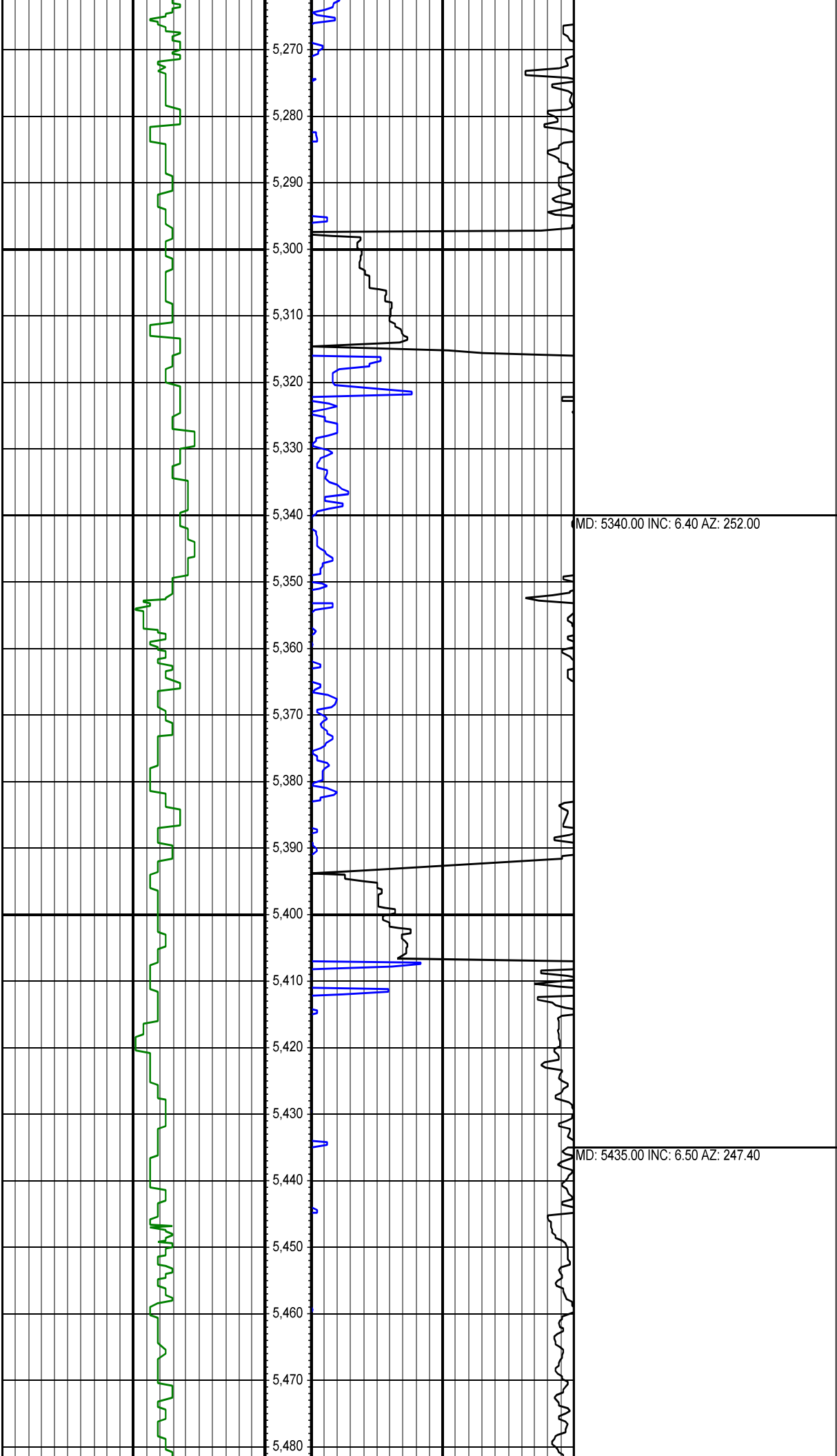


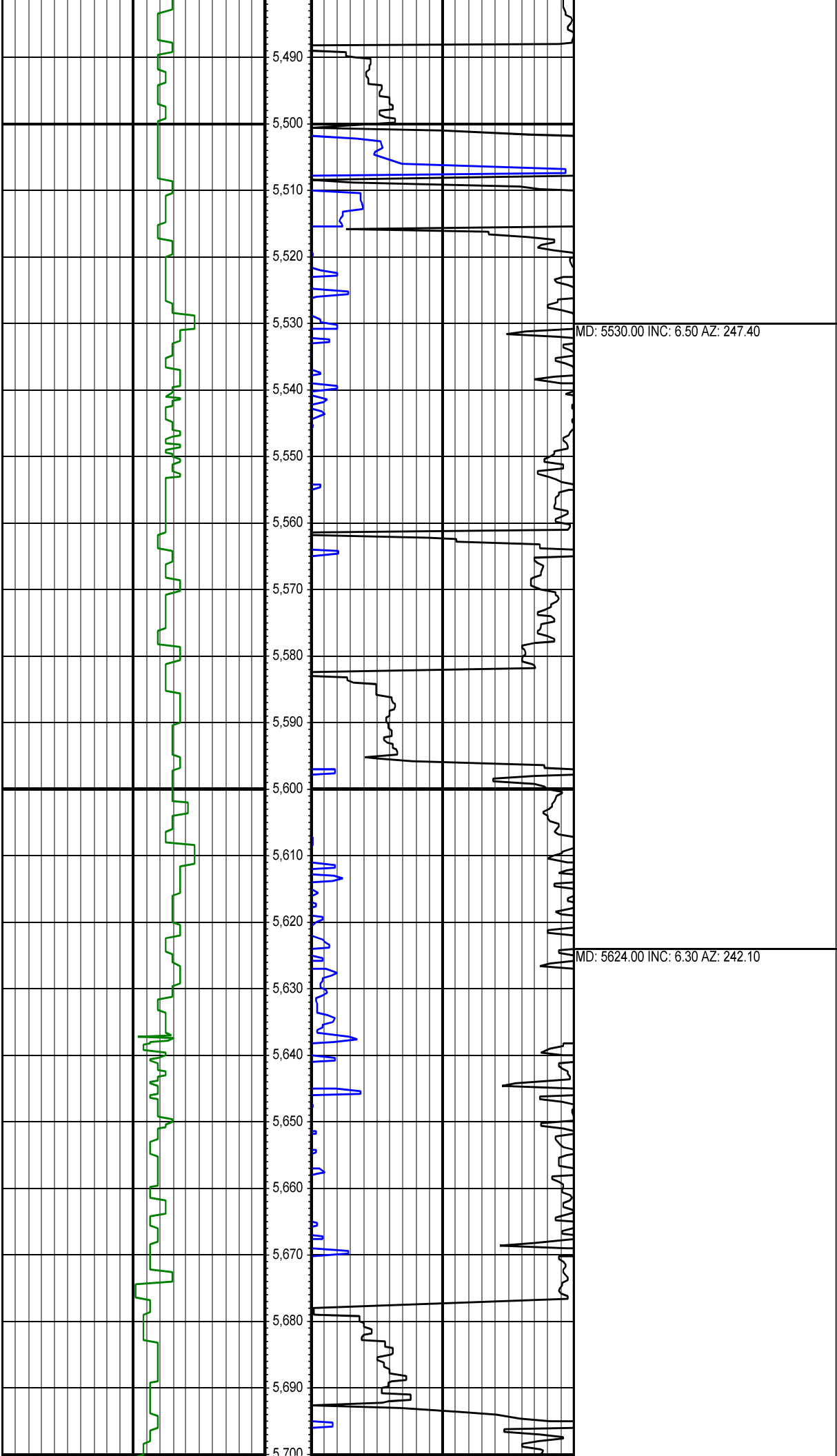


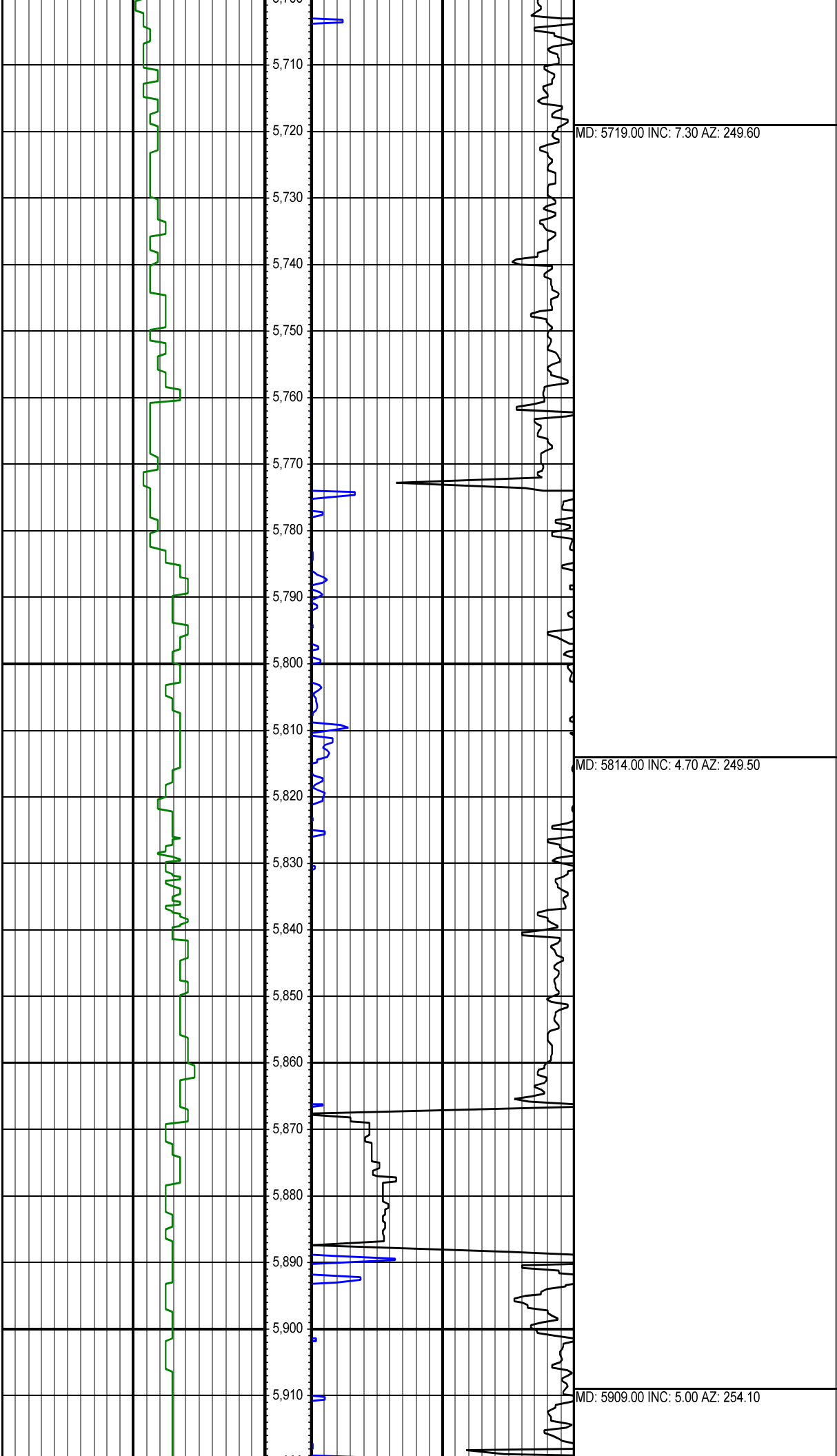
MD: 5056.00 INC: 5.80 AZ: 238.90

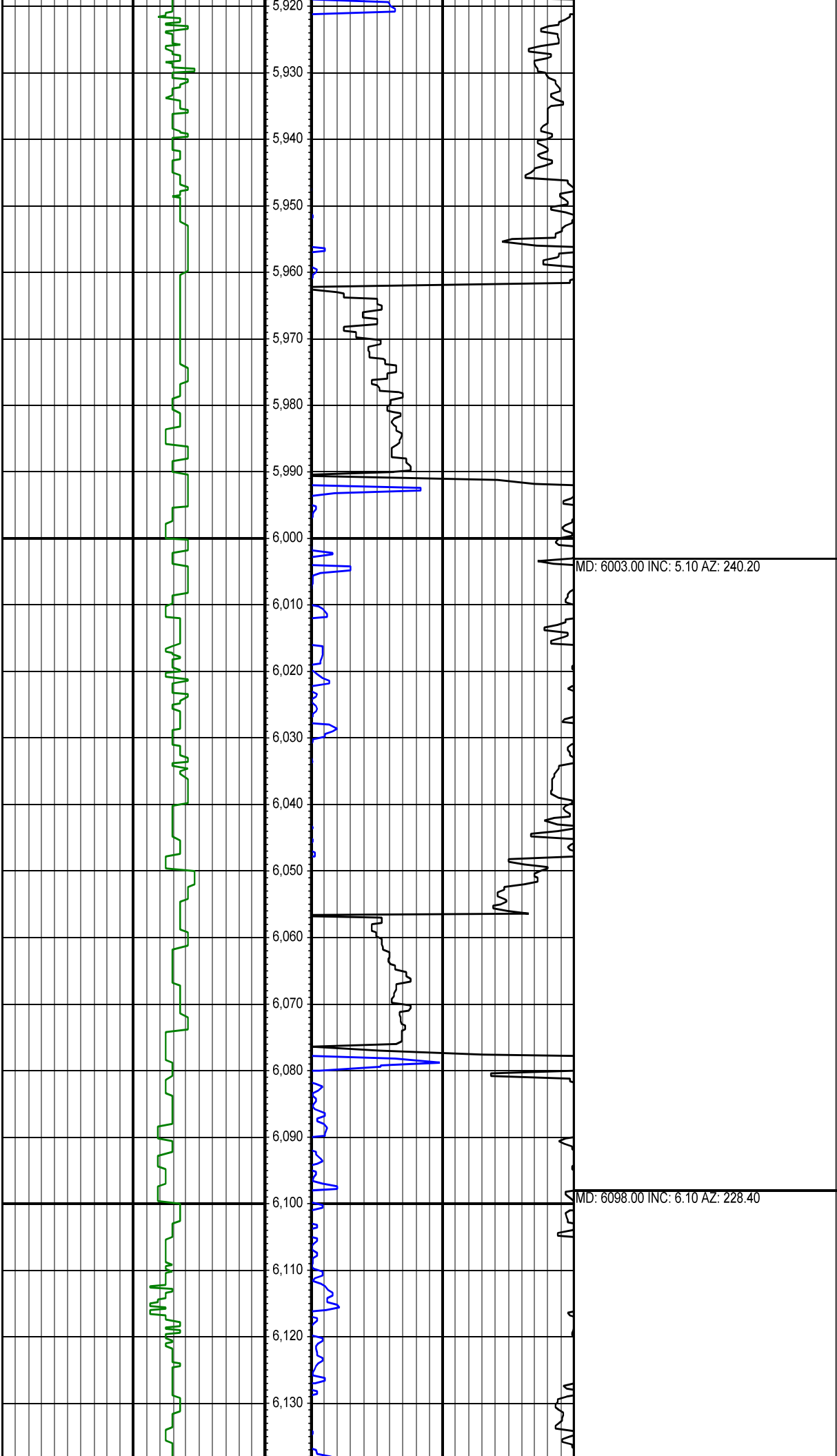
MD: 5151.00 INC: 6.20 AZ: 245.60

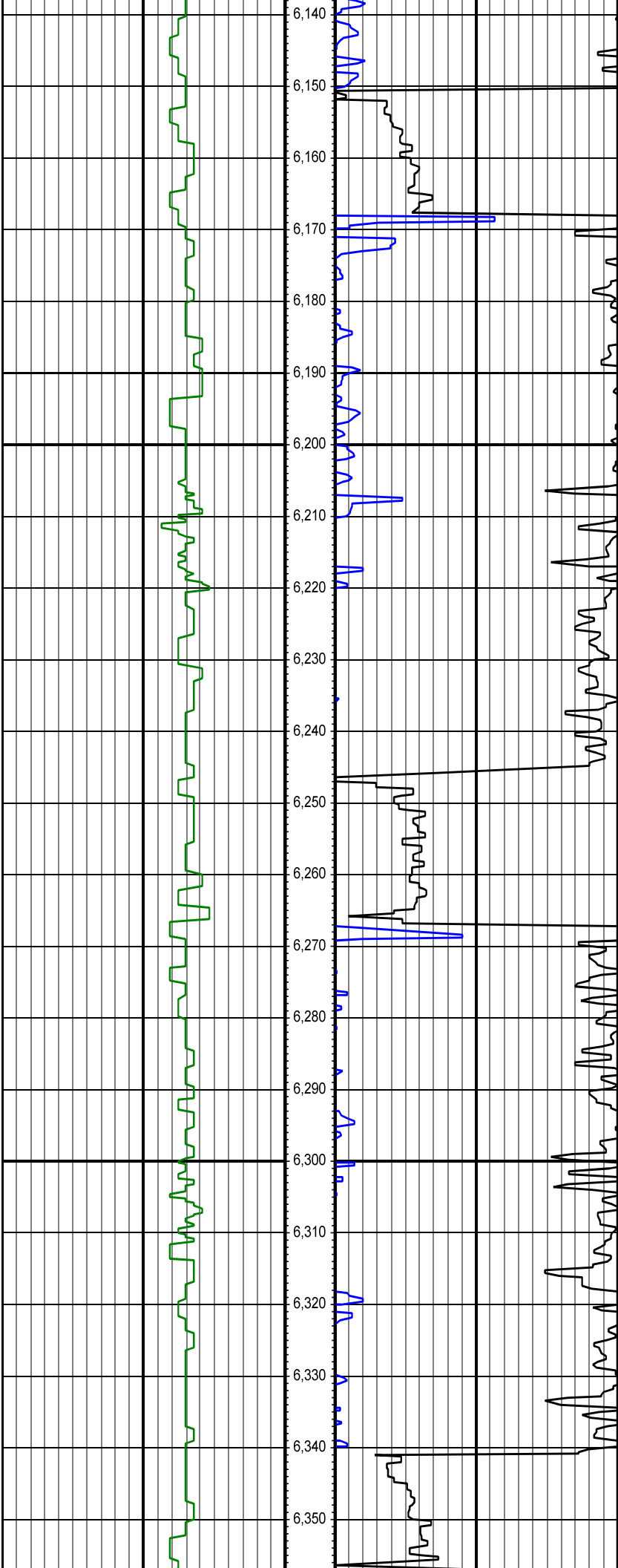
MD: 5245.00 INC: 5.70 AZ: 249.40





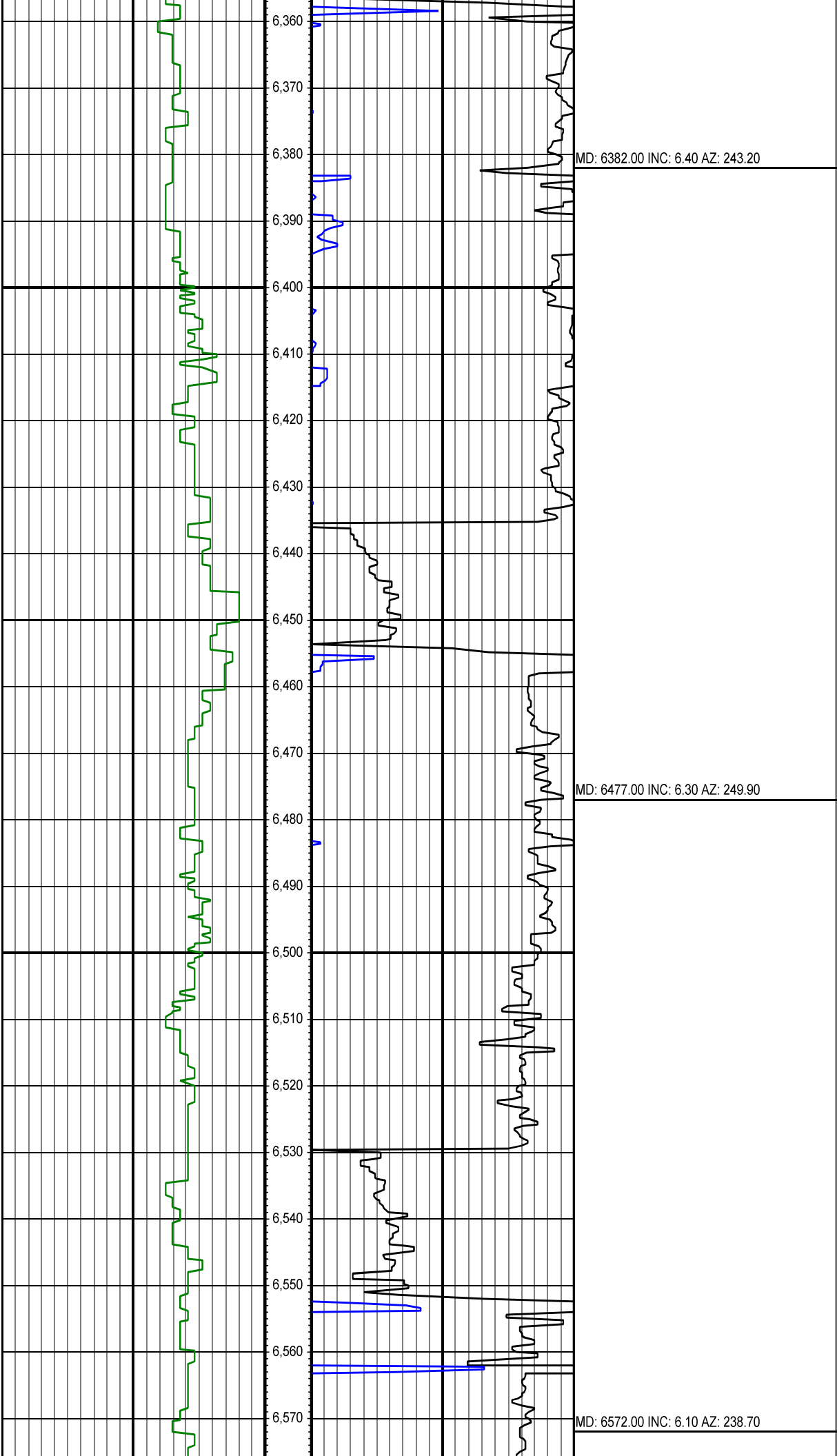




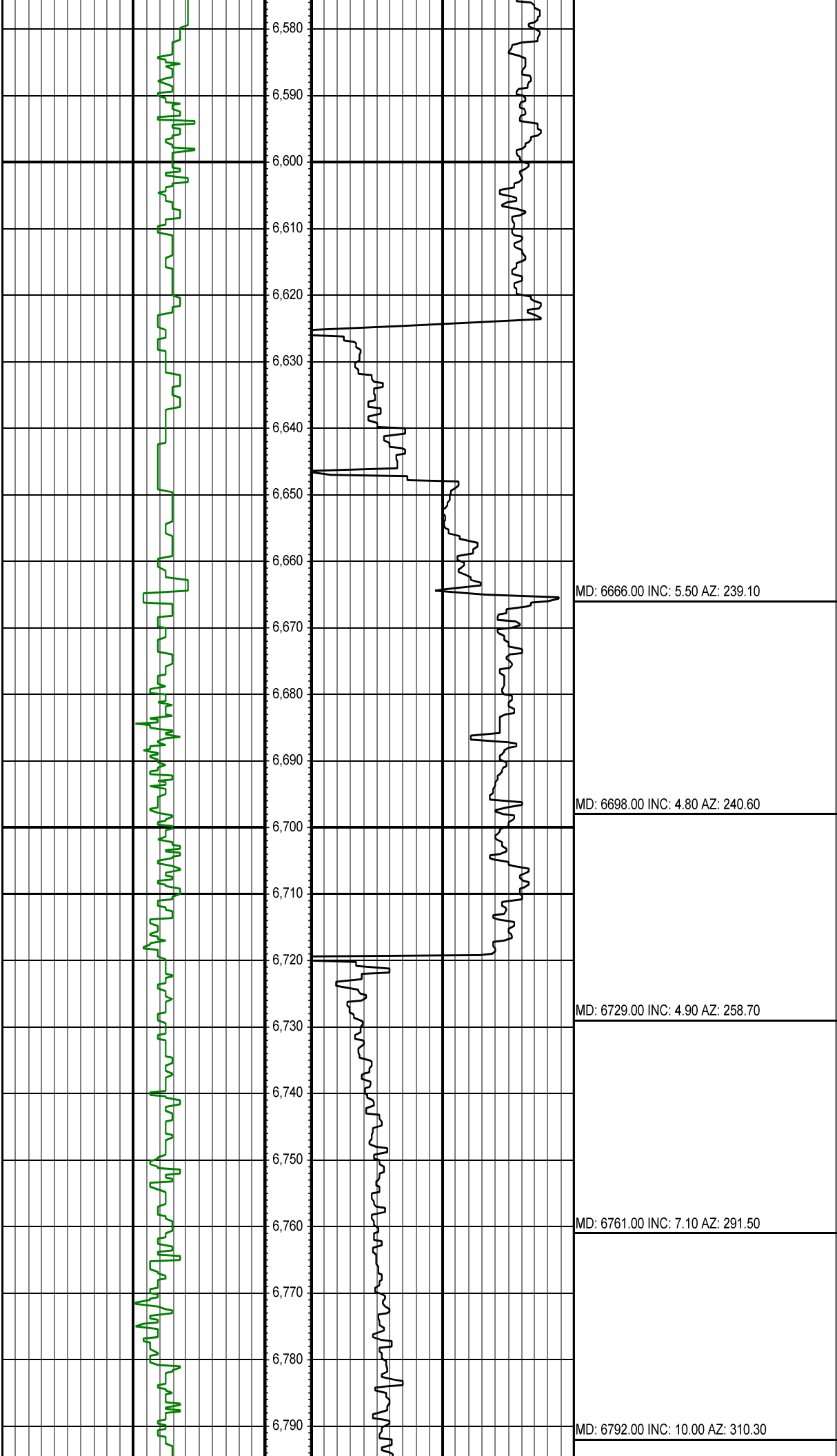


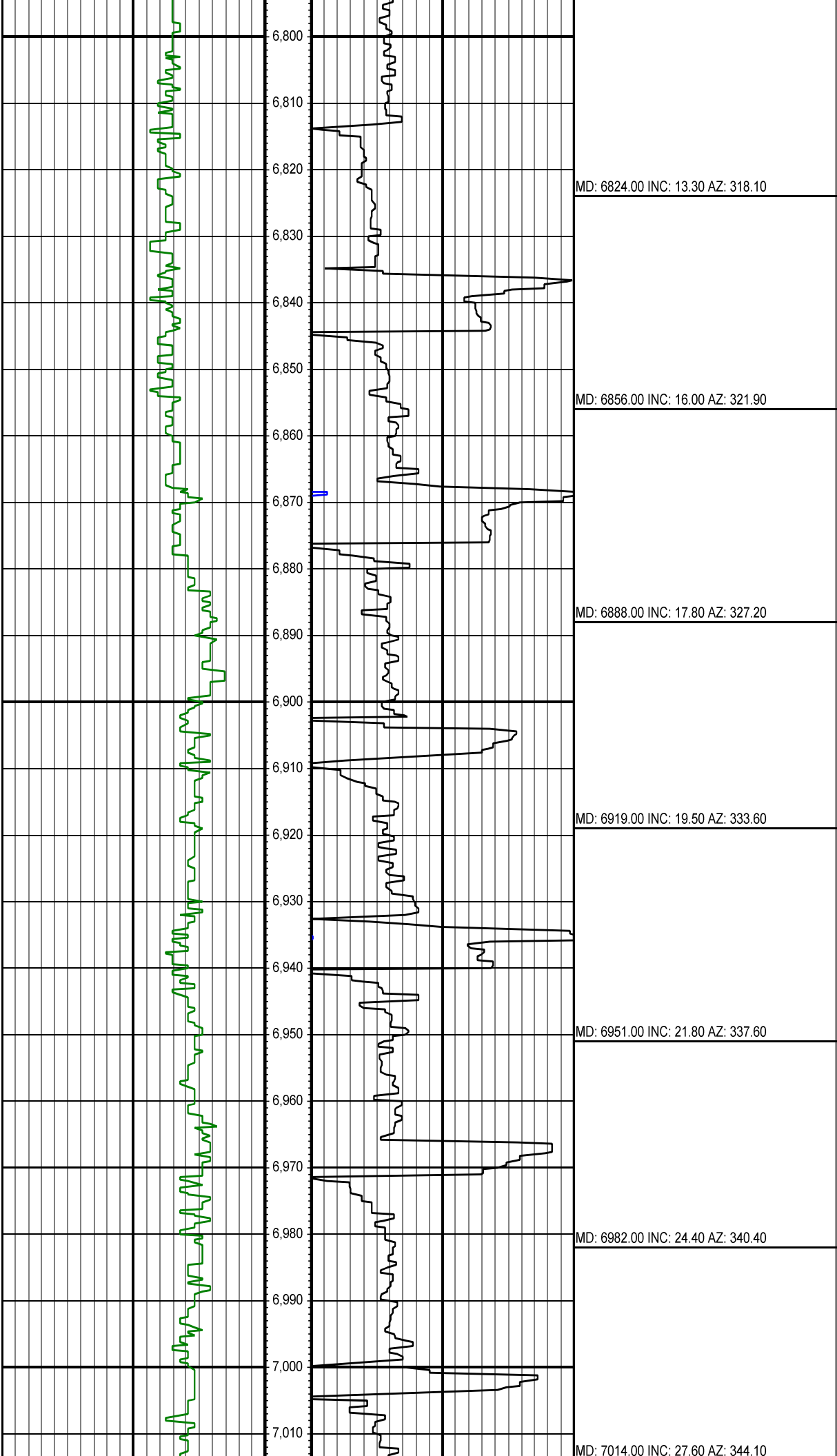
MD: 6193.00 INC: 5.60 AZ: 252.80

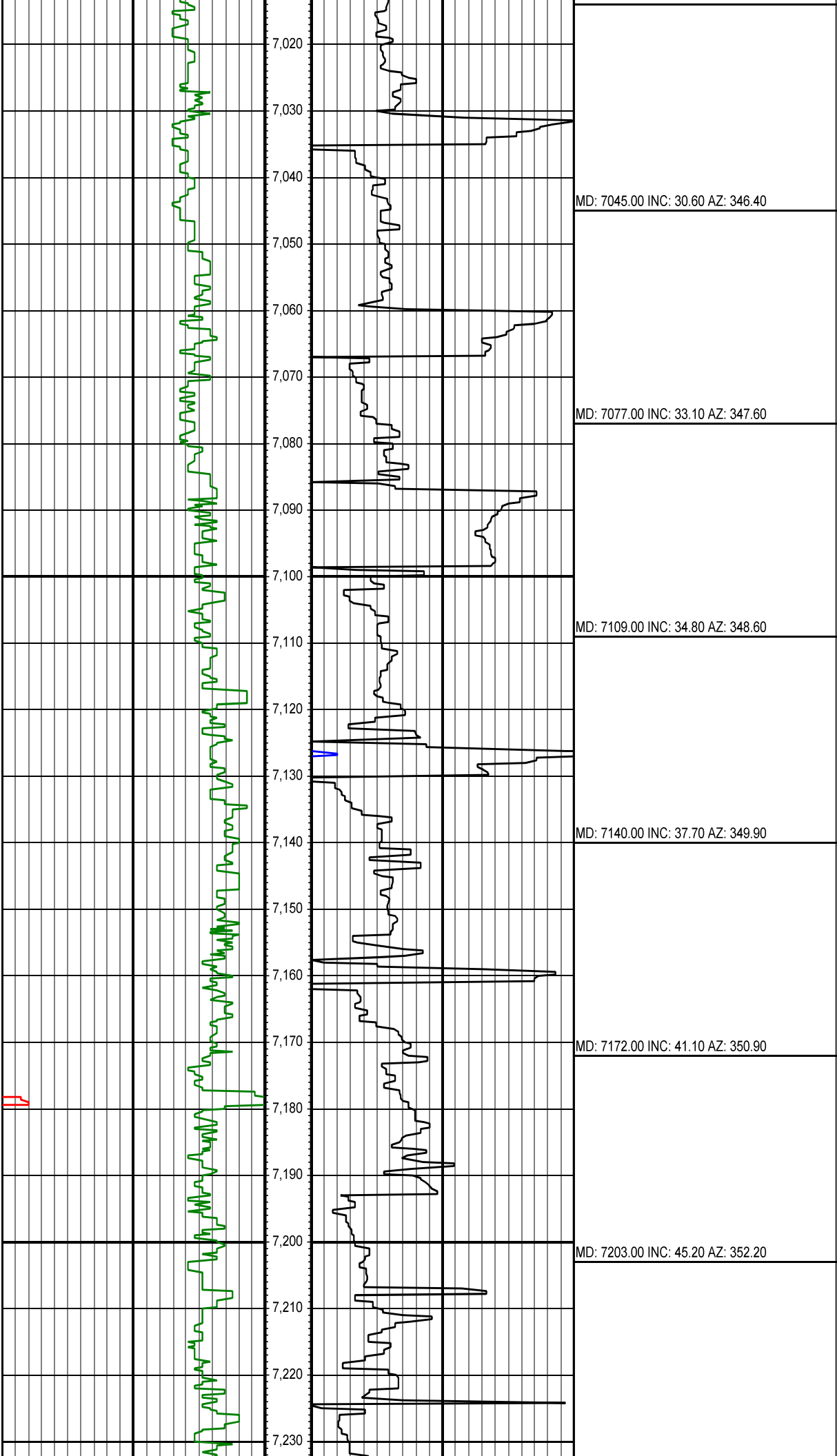
MD: 6288.00 INC: 6.20 AZ: 250.00

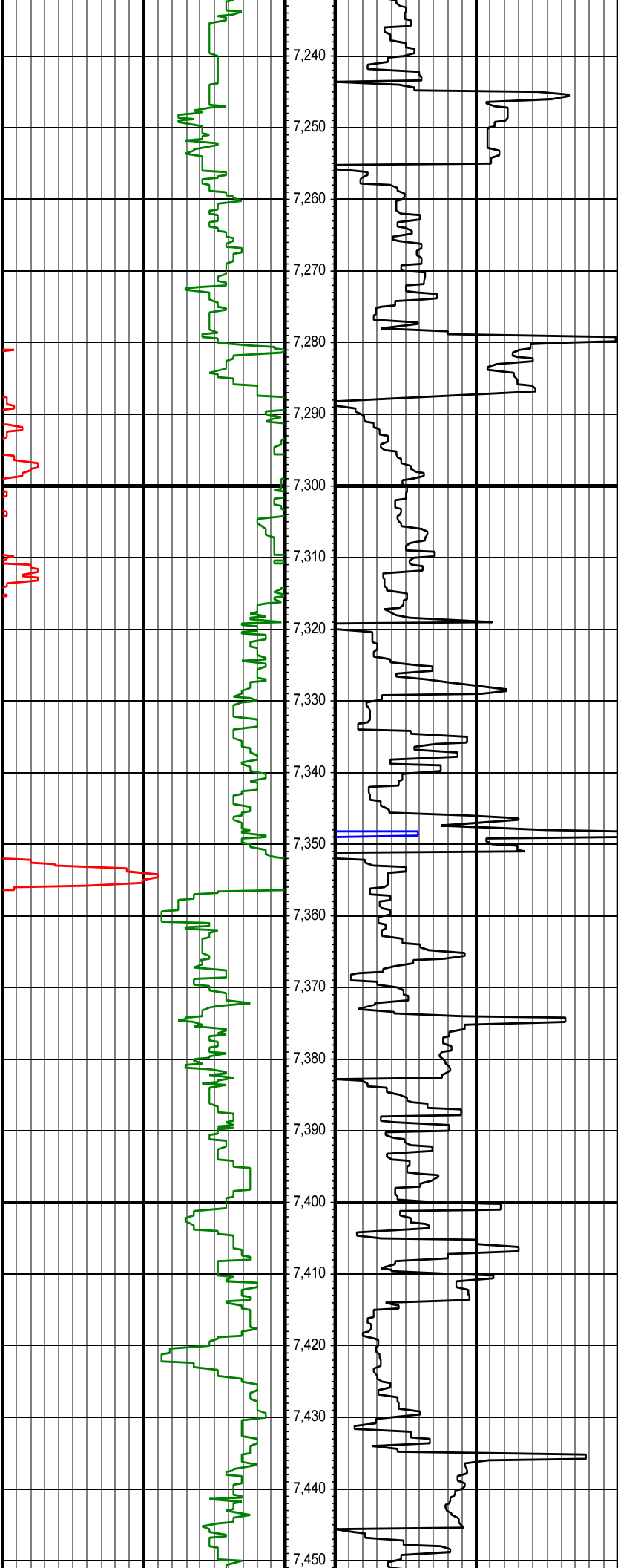












MD: 7235.00 INC: 48.40 AZ: 353.90

MD: 7266.00 INC: 50.90 AZ: 355.20

MD: 7298.00 INC: 54.20 AZ: 356.00

MD: 7330.00 INC: 57.20 AZ: 357.30

MD: 7361.00 INC: 60.10 AZ: 358.30

MD: 7393.00 INC: 62.90 AZ: 359.50

MD: 7424.00 INC: 66.30 AZ: 0.40

