

N:\PLANNING LLC\232 BB Corp - Bronco Compressor Station\Drawings\PL232-USR-2013-12-20.dwg, 12/20/2013 11:47:09 AM, Zeljko Spiric

# BRONCO COMPRESSOR STATION

USE BY SPECIAL REVIEW USR13-XXXX

PART OF THE NORTH HALF OF THE NORTHWEST QUARTER OF SECTION 23, TOWNSHIP 6  
NORTH, RANGE 62 WEST OF THE P.M., COUNTY OF WELD, STATE OF COLORADO

1 OF 2

## CONTACTS

APPLICANT  
BILL BARRETT CORPORATION  
1099 18TH ST, STE 2300  
DENVER, CO 80202  
ATTN: TRACEY FALLANG

WELD COUNTY PLANNING DEPARTMENT  
KIM OGLE  
1555 N 17TH AVE  
GREELEY, COLORADO 80631  
970-353-6100 X3549

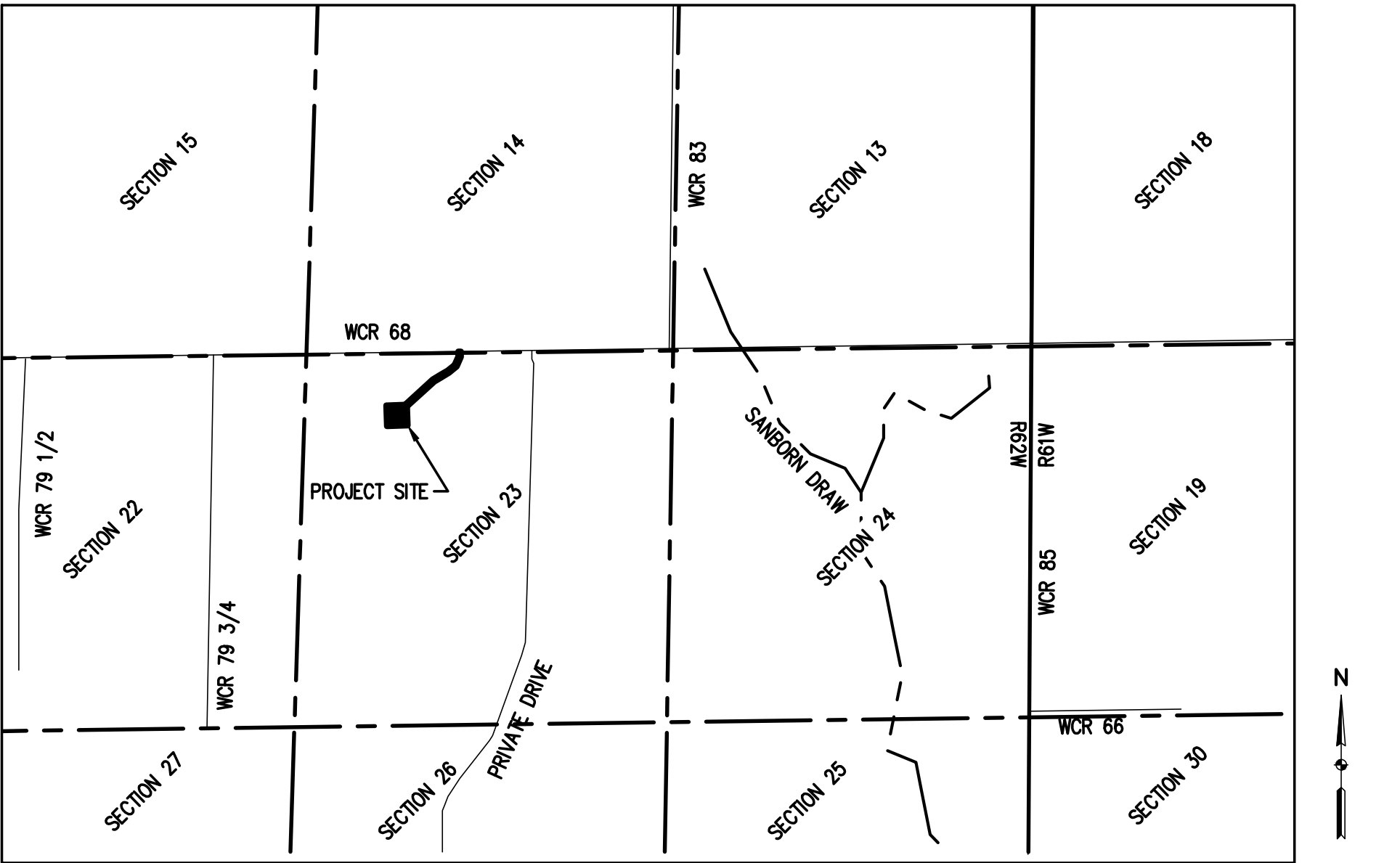
CDOT  
GLORIA HICE-IDLER  
1420 2ND STREET  
GREELEY, COLORADO 80631  
970-350-2148

ATMOS ENERGY  
JERRY ADAMS  
P.O. BOX 1200  
GREELEY, CO, 80631  
(970) 304-2075

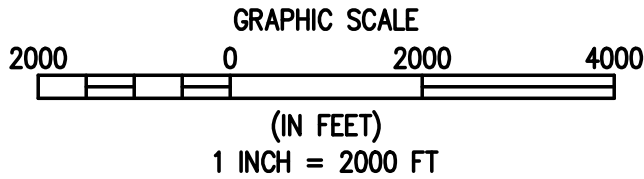
CENTURY LINK COMMUNICATIONS  
12680 WCR 58  
GREELEY COLORADO 806343  
(970) 350-2941

XCEL ENERGY  
TERRY STENDEL  
1500 6TH AVE  
GREELEY CO, 80631

FIRE  
BRIGGSDALE FIRE PROTECTION DISTRICT  
95 MILLION STREET  
BRIGGSDALE, CO 80611



VICINITY MAP



## PROPERTY DESCRIPTION

OWNER : RONALD & BETTY PAPPENHEIM  
LAND USE : AGRICULTURAL  
ZONING : A

SUBDIVISION EXEMPTION NO. SUBX13-0026

## SHEET INDEX

U1 COVER  
U2 SITE PLAN

## CERTIFICATIONS

### PLANNING COMMISSION CERTIFICATION

THIS IS TO CERTIFY THAT THE WELD COUNTY PLANNING COMMISSION HAS CERTIFIED AND DOES HEREBY RECOMMEND TO THE BOARD OF COUNTY COMMISSIONERS, WELD COUNTY, COLORADO, FOR ITS CONFIRMATION, APPROVAL AND ADOPTION THIS SITE SPECIFIC DEVELOPMENT PLAN AND USE BY SPECIAL REVIEW AS SHOWN AND DESCRIBED THEREON THIS \_\_\_\_ DAY OF \_\_\_\_, 20\_\_.

CHAIR, WELD COUNTY PLANNING COMMISSION

### BOARD OF COUNTY COMMISSIONERS CERTIFICATION

THIS IS TO CERTIFY THAT THE BOARD OF COUNTY COMMISSIONERS, WELD COUNTY, COLORADO, DOES HEREBY CONFIRM AND ADOPT THIS SITE SPECIFIC DEVELOPMENT PLAN AND USE BY SPECIAL REVIEW AND DEVELOPMENT STANDARDS AS SHOWN AND DESCRIBED HEREON THIS \_\_\_\_ DAY OF \_\_\_\_, 20\_\_.

CHAIR, BOARD OF COUNTY COMMISSIONERS

ATTEST:

WELD COUNTY CLERK TO THE BOARD

BY: \_\_\_\_\_  
DEPUTY CLERK TO THE BOARD

DATED: \_\_\_\_\_

### PROPERTY OWNER'S CERTIFICATION

THE UNDERSIGNED MAJOR PROPERTY OWNER(S) DO HEREBY AGREE TO THE SITE SPECIFIC DEVELOPMENT PLAN AND USE BY SPECIAL REVIEW DEVELOPMENT STANDARDS AS DESCRIBED HEREON THIS \_\_\_\_ DAY OF \_\_\_\_, 20\_\_.

RONALD PAPPENHEIM

SIGNATURE

BETTY PAPPENHEIM

SIGNATURE



Know what's below.  
Call before you dig.



Engineering • Planning • Surveying  
700 12TH STREET, SUITE 220 • GOLDEN, COLORADO 80401  
P. 303.940.9966 • F. 303.940.9968 • www.baselinecorp.com

DESIGNED BY M.J.W.  
DRAWN BY M.J.W.  
CHECKED BY N.J.N.

REVISION	DESCRIPTION	DATE

BILL BARRETT CORPORATION  
WELD COUNTY  
BRONCO COMPRESSOR STATION  
COVER

PREPARED UNDER THE DIRECT SUPERVISION OF

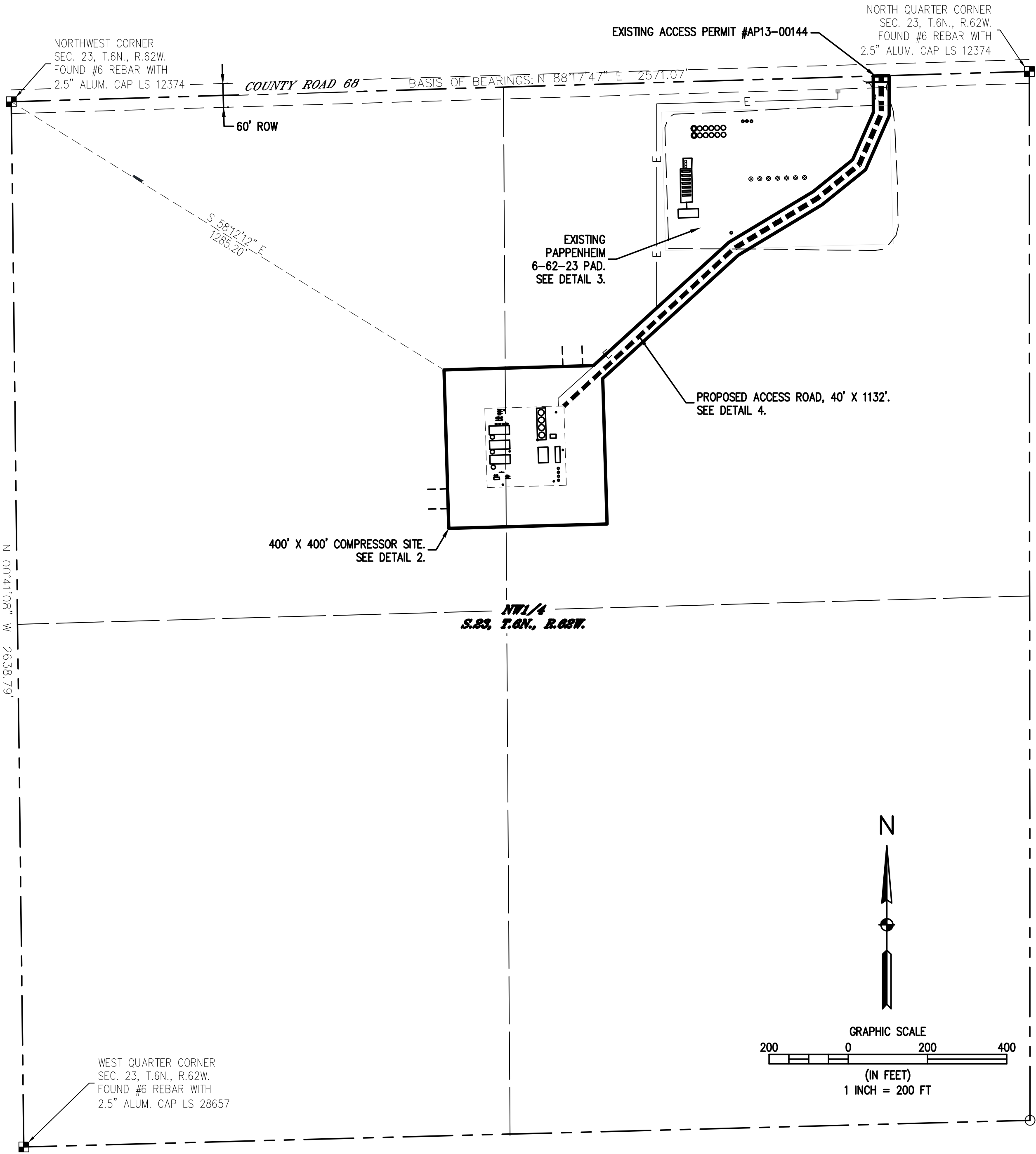
FOR AND ON BEHALF OF  
BASELINE CORPORATION  
INITIAL SUBMITTAL XX/XX/XX  
DRAWING SIZE 24" X 36"  
SURVEY FIRM SURVEY DATE  
LAT 40  
JOB NO. PL232  
DRAWING NAME  
PL232-USR-2013-12-20.dwg  
SHEET 1 OF 2

U1

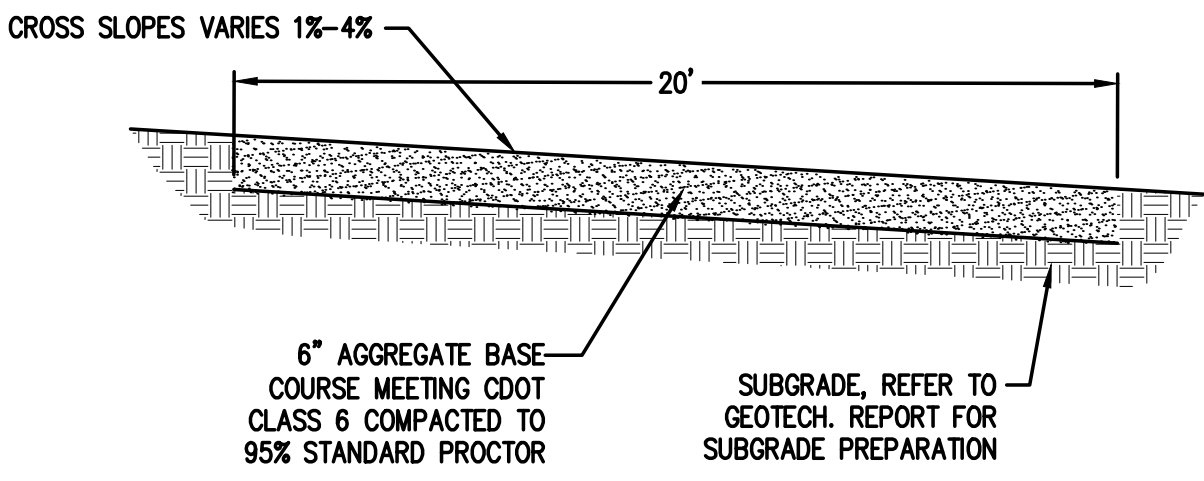
BRONCO COMPRESSOR STATION

USE BY SPECIAL REVIEW USR13-XXXX

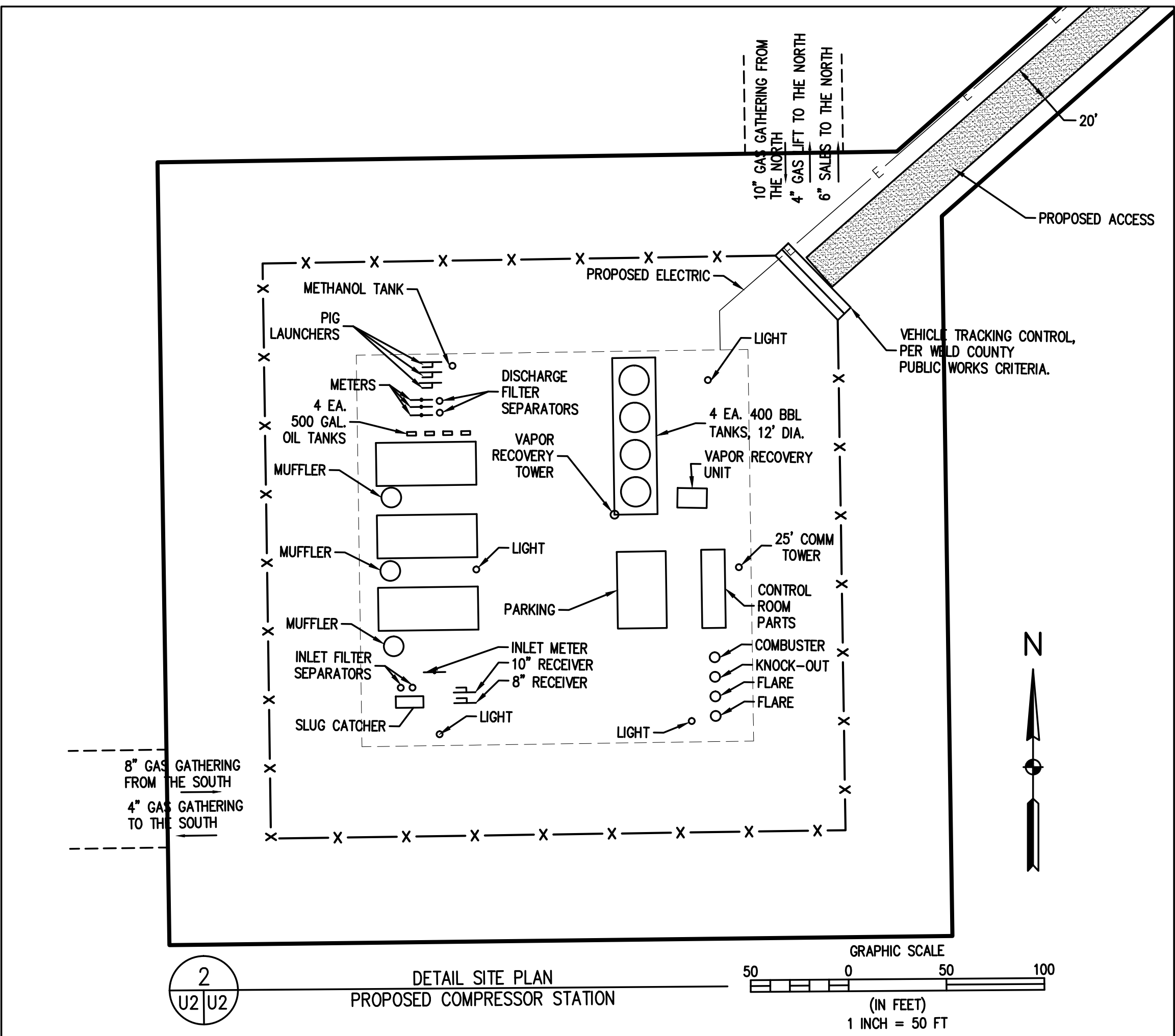
2 OF 2



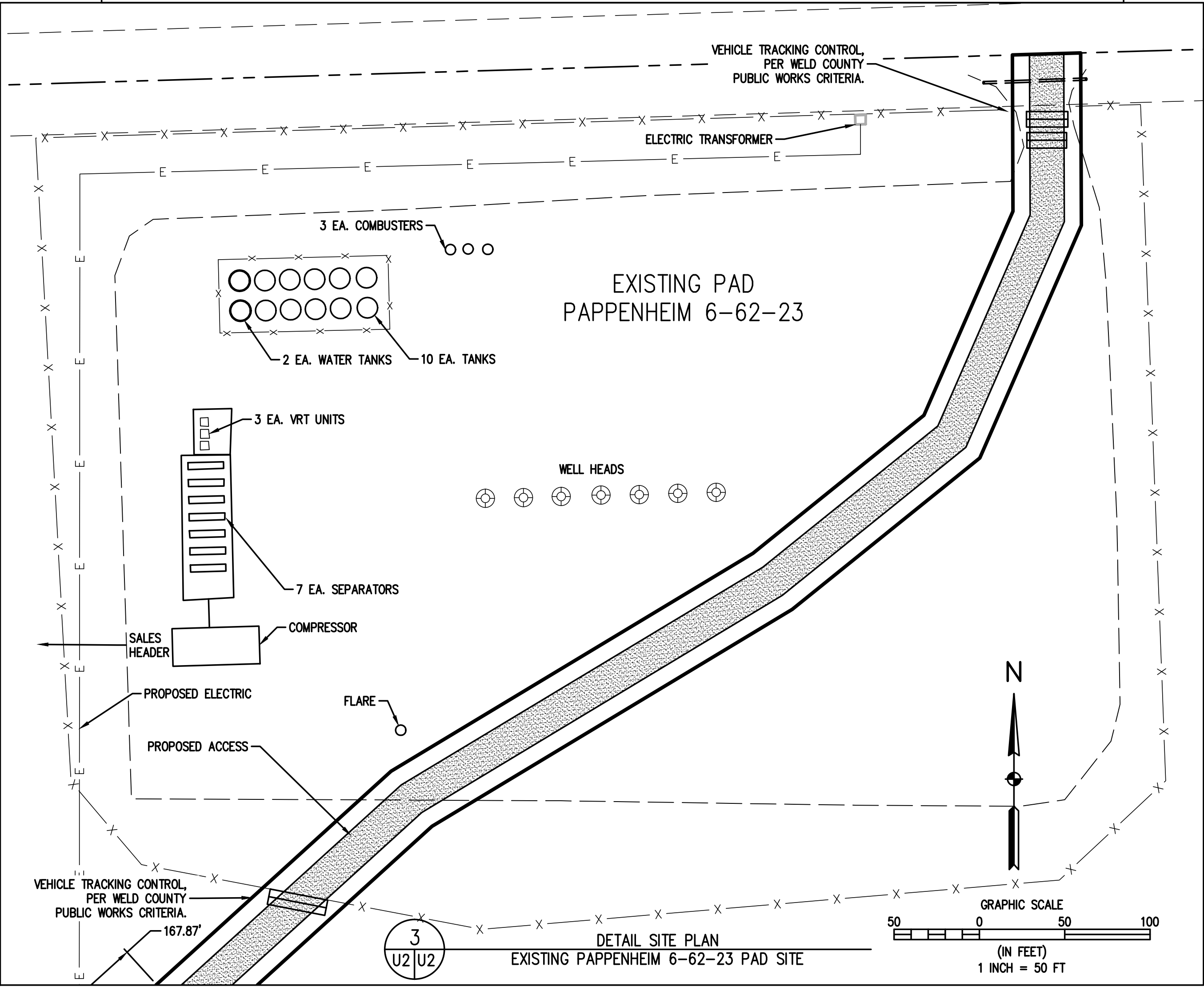
- LEGEND**
- SECTION LINE
  - EDGE OF GRAVEL
  - SUBJECT PROPERTY LINE
  - FENCE
  - UNDERGROUND ELECTRIC
  - ROAD RIGHT-OF-WAY
  - ACCESS ROAD
  - CATTLE GUARD
  - ALIQUOT MONUMENT



ALL WEATHER ROAD TYPICAL SECTION  
NOT TO SCALE



DETAIL SITE PLAN  
PROPOSED COMPRESSOR STATION



DETAIL SITE PLAN  
EXISTING PAPPENHEIM 6-62-23 PAD SITE

**BASELINE**

Engineering • Planning • Surveying  
700 12TH STREET, SUITE 220 • GOLDEN, COLORADO 80401  
P. 303.940.9966 • F. 303.940.9968 • www.baselinecorp.com

DESIGNED BY: M.J.W.  
DRAWN BY: M.J.W.  
CHECKED BY: N.J.N.

DATE: \_\_\_\_\_  
PREPARED BY: \_\_\_\_\_

REVISION DESCRIPTION: \_\_\_\_\_

**BILL BARRETT CORPORATION**  
WELD COUNTY  
BRONCO COMPRESSOR STATION  
SITE PLAN

PREPARED UNDER THE DIRECT SUPERVISION OF

FOR AND ON BEHALF OF  
BASELINE CORPORATION  
INITIAL SUBMITTAL: XX/XX/XX  
DRAWING SIZE: 24" x 36"  
SURVEY FIRM: SURVEY DATE:  
LAT. 40  
JOB NO.: PL232  
DRAWING NAME: PL232-USR-2013-12-20.dwg  
SHEET 2 OF 2

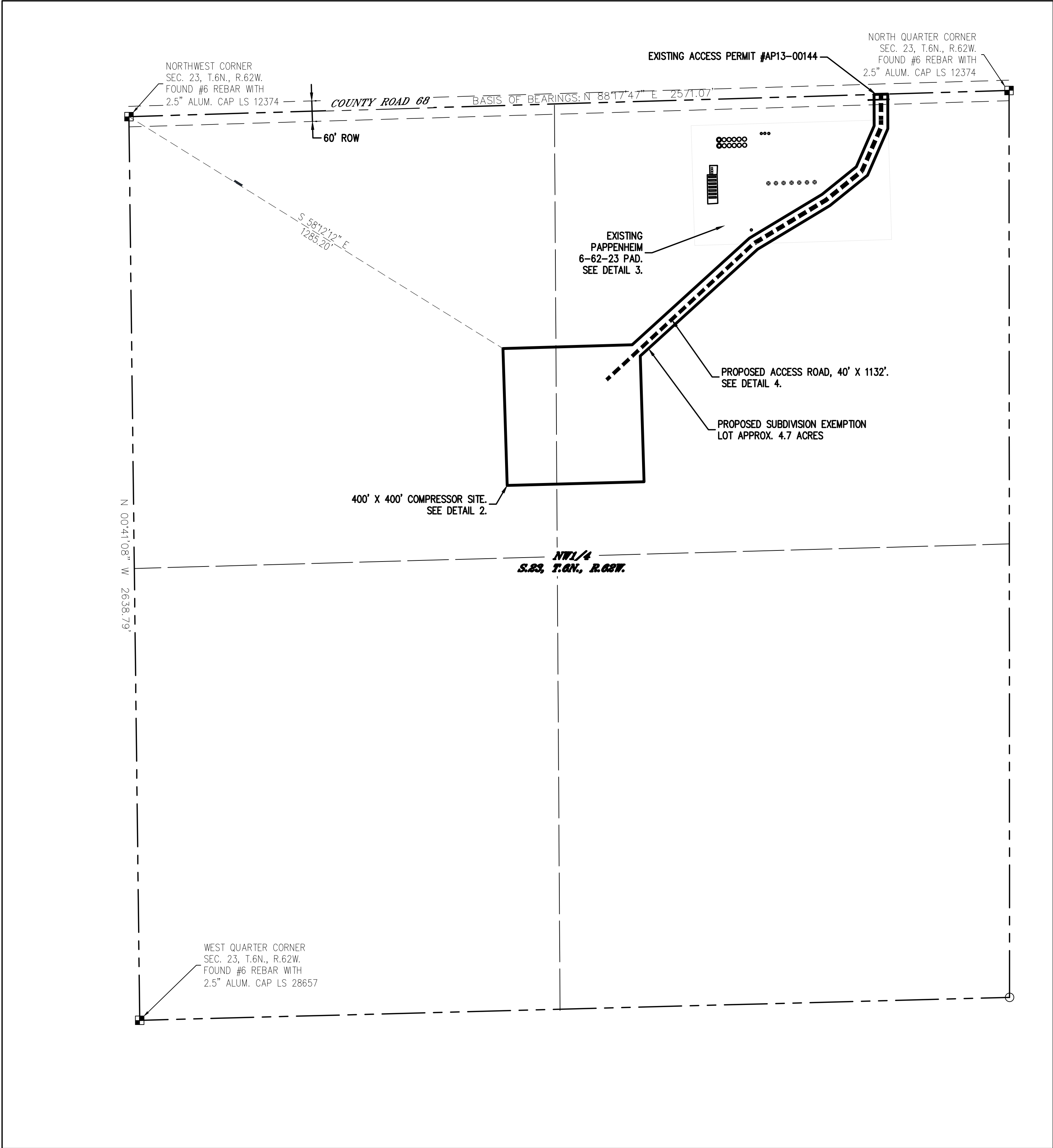
U2



N:\PLANNING LLC\232 BB Corp - Bronco Compressor Station\Drawings\PL232-USR-2013-12-20.dwg, 12/20/2013 11:47:11 AM, Zeljko Spirc

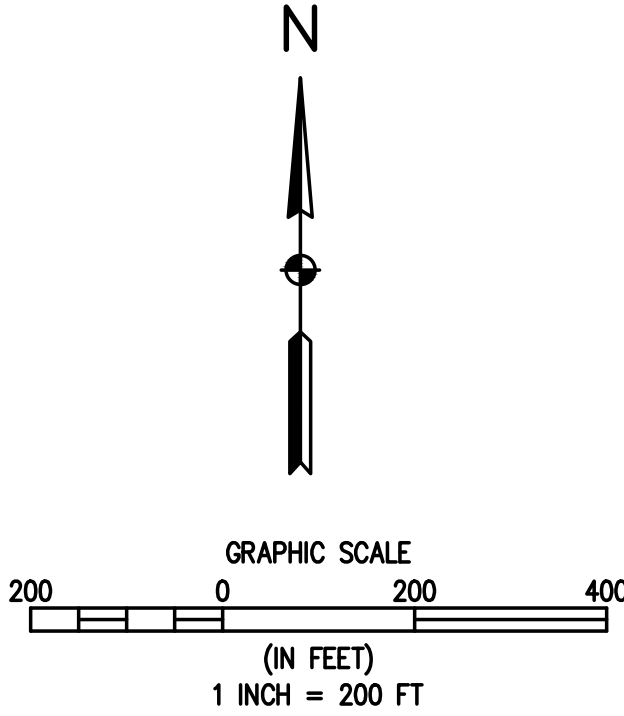
# BRONCO COMPRESSOR STATION

SUBDIVISION EXEMPTION SUBX13-XXXX  
PART OF THE NORTH HALF OF THE NORTHWEST QUARTER OF SECTION 23, TOWNSHIP 6  
NORTH, RANGE 62 WEST OF THE P.M., COUNTY OF WELD, STATE OF COLORADO  
1 OF 1



1  
S1|S1

OVERALL SITE PLAN



DESIGNED BY	M.J.W.
DRAWN BY	CRM
CHECKED BY	E.W.

REVISION	DESCRIPTION	DATE

BILL BARRET CORP.	WELD COUNTY
BRONCO COMPRESSOR	
SUBDIVISION EXEMPTION SKETCH	

PREPARED UNDER THE DIRECT SUPERVISION OF

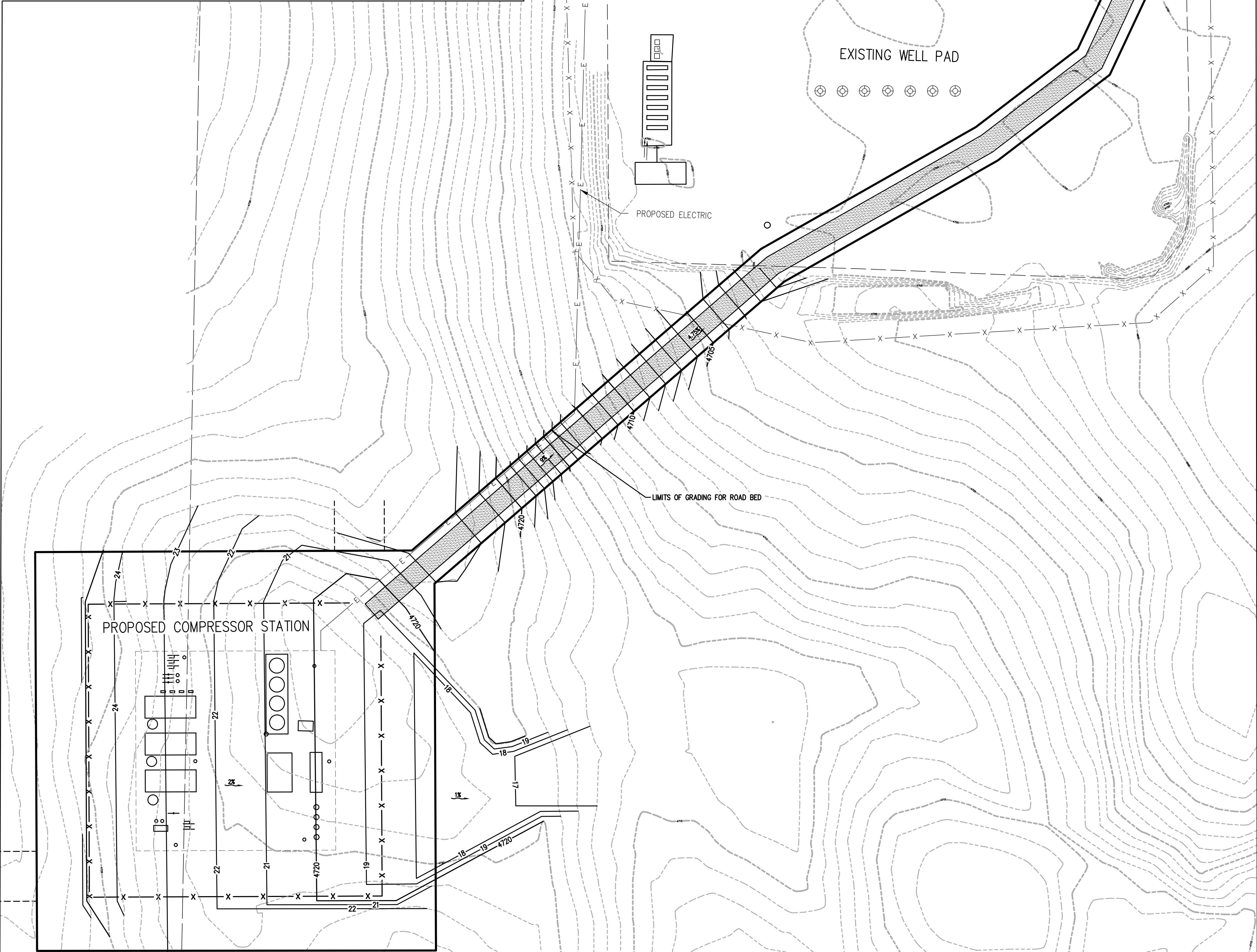
FOR AND ON BEHALF OF	BASILINE CORPORATION
INITIAL SUBMITTAL	10/25/2013
DRAWING SIZE	24" X 36"
SURVEY FIRM	SURVEY DATE
LAT 40	
JOB NO.	PL232
DRAWING NAME	PL232-USR-2013-12-20.dwg
SHEET	1 OF 1

S1



BRONCO COMPRESSOR STATION

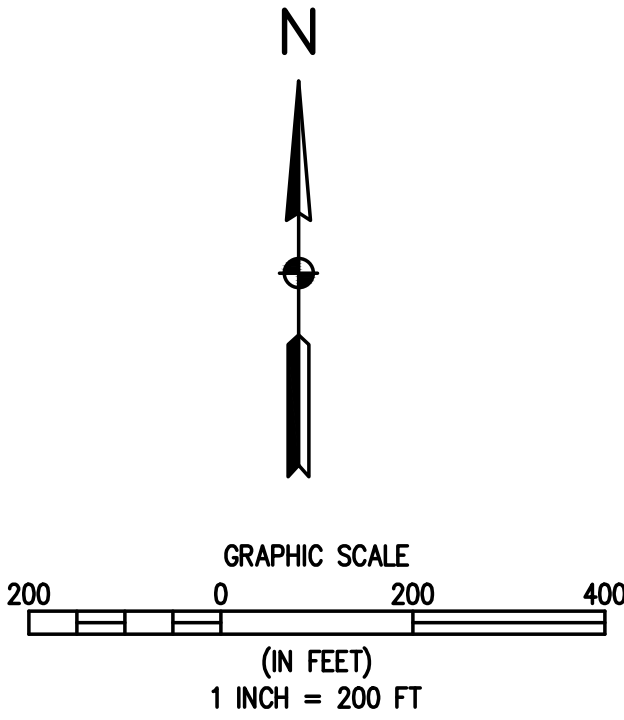
USE BY SPECIAL REVIEW USR13-XXXX  
PART OF THE NORTH HALF OF THE NORTHWEST QUARTER OF  
SECTION 23, TOWNSHIP 6 NORTH, RANGE 62 WEST OF THE P.M.,  
COUNTY OF WELD, STATE OF COLORADO  
1 OF 2



- NOTES:
- GRADES SHOWN ARE FINISHED GRADES, UNLESS OTHERWISE STATED.
  - THE ACCESS DRIVES ARE PROPOSED TO BE PROPOSED TO BE SURFACED WITH 6" MINIMUM OF CDOT CLASS 6 ROAD BASE.
  - NORTH AMERICAN GREEN SC250 EROSION CONTROL FABRIC AS APPROVED OR SIMILAR TO BE INSTALLED AS PER MANUFACTURES SPECIFICATIONS ON ALL SLOPES 4:1 OR GREATER.

LEGEND

EXISTING MINOR CONTOUR	---
EXISTING MAJOR CONTOUR	- - - -
PROPOSED MINOR CONTOUR	---
PROPOSED MAJOR CONTOUR	- - - -
FLOW ARROW	1/2" →



1  
C1/C1 OVERALL GRADING PLAN

**BASELINE**

Engineering • Planning • Surveying  
700 12TH STREET, SUITE 220 • GOLDEN, COLORADO 80401  
P. 303.940.9869 • F. 303.940.9869 • www.baselinecorp.com

DESIGNED BY  
M.W.  
DRAWN BY  
M.W.  
CHECKED BY  
N.J.N.

PREPARED BY

DATE

REVISION DESCRIPTION

WELD COUNTY  
BRONCO COMPRESSOR STATION  
GRADING PLAN

PREPARED UNDER THE DIRECT SUPERVISION OF

FOR AND ON BEHALF OF  
BASELINE CORPORATION  
INITIAL SUBMITTAL XX/XX/XX  
DRAWING SIZE 24" X 36"  
SURVEY FIRM SURVEY DATE  
LAT 40  
JOB NO. PL 232  
DRAWING NAME  
PL232-USR-2013-12-20.dwg  
SHEET 1 OF 1