

The Road to Excellence Starts with Safety

Sold To #: 300721		Ship To #: 3105799		Quote #:		Sales Order #: 900747514	
Customer: WPX ENERGY ROCKY MOUNTAIN LLC-EBUS				Customer Rep: Oaks, Rick			
Well Name: RU		Well #: 43-5		API/UWI #: 05-045-21770			
Field: RULISON		City (SAP): RIFLE		County/Parish: Garfield		State: Colorado	
Lat: N 39.475 deg. OR N 39 deg. 28 min. 28.852 secs.				Long: W 107.799 deg. OR W -108 deg. 12 min. 4.547 secs.			
Contractor: NABORS 574		Rig/Platform Name/Num: NABORS 576					
Job Purpose: Cement Surface Casing							
Well Type: Development Well				Job Type: Cement Surface Casing			
Sales Person: MAYO, MARK		Srv Supervisor: SMITH, DUSTIN		MBU ID Emp #: 418015			
Job Personnel							
HES Emp Name	Exp Hrs	Emp #	HES Emp Name	Exp Hrs	Emp #	HES Emp Name	Exp Hrs
ANDERSON, ADAM S	8.5	456683	EICKHOFF, ROBERT Edward	8.5	495311	SMITH, DUSTIN Michael	8.5
Equipment							
HES Unit #	Distance-1 way	HES Unit #	Distance-1 way	HES Unit #	Distance-1 way	HES Unit #	Distance-1 way
	60 mile	10297346	60 mile	10973571	60 mile	11583932	60 mile
11808849	60 mile						
Job Hours							
Date	On Location Hours	Operating Hours	Date	On Location Hours	Operating Hours	Date	On Location Hours
09/16/13	8.5	2					
TOTAL		Total is the sum of each column separately					
Job				Job Times			
Formation Name				Date	Time	Time Zone	
Formation Depth (MD)		Top	Bottom	Called Out	15 - Sep - 2013	20:30	MST
Form Type		BHST		On Location	16 - Sep - 2013	00:30	MST
Job depth MD		1127.9 ft	Job Depth TVD	1127.9 ft	Job Started	16 - Sep - 2013	06:38
Water Depth		Wk Ht Above Floor		5. ft	Job Completed	16 - Sep - 2013	07:29
Perforation Depth (MD)		From	To	Departed Loc	16 - Sep - 2013	09:00	MST
Well Data							
Description	New / Used	Max pressure psig	Size in	ID in	Weight lbm/ft	Thread	Grade
							Top MD ft
							Bottom MD ft
							Top TVD ft
							Bottom TVD ft
Tools and Accessories							
Type	Size	Qty	Make	Depth	Type	Size	Qty
Guide Shoe					Packer		
Float Shoe					Bridge Plug		
Float Collar					Retainer		
Insert Float							
Stage Tool							
Miscellaneous Materials							
Gelling Agt		Conc		Surfactant		Conc	
Treatment Fld		Conc		Inhibitor		Conc	
Fluid Data							
Stage/Plug #: 1							
Fluid #	Stage Type	Fluid Name			Qty	Qty uom	Mixing Density lbm/gal
							Yield ft3/sk
							Mix Fluid Gal/sk
							Rate bbl/min
							Total Mix Fluid Gal/sk
Stage/Plug #: 1							
Fluid #	Stage Type	Fluid Name			Qty	Qty uom	Mixing Density lbm/gal
							Yield ft3/sk
							Mix Fluid Gal/sk
							Rate bbl/min
							Total Mix Fluid Gal/sk

HALLIBURTON**Cementing Job Summary**

Stage/Plug #: 1									
1	Fresh Water Spacer		20.00	bbl	8.33	.0	.0	4.0	
2	VariCem GJI Lead Cement	VARICEM (TM) CEMENT (452009)	160.0	sacks	12.3	2.38	13.75	8.0	13.75
	13.75 Gal	FRESH WATER							
3	VariCem GJI Tail Cement	VARICEM (TM) CEMENT (452009)	160.0	sacks	12.8	2.11	11.75	8.0	11.75
	11.75 Gal	FRESH WATER							
4	Fresh Water Displacement		85.5	bbl	8.33	.0	.0	10.0	
Calculated Values		Pressures		Volumes					
Displacement	85.5	Shut In: Instant		Lost Returns	0	Cement Slurry	127.9	Pad	
Top Of Cement	SURFACE	5 Min		Cement Returns	30	Actual Displacement	85.5	Treatment	
Frac Gradient		15 Min		Spacers	20	Load and Breakdown		Total Job	233.4
Rates									
Circulating		Mixing	8	Displacement	10	Avg. Job			9
Cement Left In Pipe	Amount	0 ft	Reason	Shoe Joint					
Frac Ring # 1 @	ID	Frac ring # 2 @	ID	Frac Ring # 3 @	ID	Frac Ring # 4 @	ID		
The Information Stated Herein Is Correct				Customer Representative Signature					

The Road to Excellence Starts with Safety

Sold To #: 300721	Ship To #: 3105799	Quote #:	Sales Order #: 900747514
Customer: WPX ENERGY ROCKY MOUNTAIN LLC-EBUS	Customer Rep: Oaks, Rick		
Well Name: RU	Well #: 43-5	API/UWI #: 05-045-21770	
Field: RULISON	City (SAP): RIFLE	County/Parish: Garfield	State: Colorado
Legal Description:			
Lat: N 39.475 deg. OR N 39 deg. 28 min. 28.852 secs.		Long: W 107.799 deg. OR W -108 deg. 12 min. 4.547 secs.	
Contractor: NABORS 574	Rig/Platform Name/Num: NABORS 576		
Job Purpose: Cement Surface Casing			Ticket Amount:
Well Type: Development Well	Job Type: Cement Surface Casing		
Sales Person: MAYO, MARK	Srvc Supervisor: SMITH, DUSTIN	MBU ID Emp #: 418015	

Activity Description	Date/Time	Cht #	Rate bbl/min	Volume bbl		Pressure psig		Comments
				Stage	Total	Tubing	Casing	
Call Out	09/15/2013 20:30							ELITE # 9
Depart Yard Safety Meeting	09/15/2013 22:30							ALL HES EMPLOYEES
Arrive At Loc	09/16/2013 00:30							ARRIVED ON LOCATION 2 HOURS EARLY DIDNT START CHARGING TIME UNTIL REQUESTED ON LOCATION TIME RIG POOH W/ DRILL PIPE
Assessment Of Location Safety Meeting	09/16/2013 04:50							ALL HES EMPLOYEES
Pre-Rig Up Safety Meeting	09/16/2013 04:50							ALL HES EMPLOYEES
Rig-Up Equipment	09/16/2013 05:00							1 HT-400 PUMP TRUCK (ELITE #9) 1 660-BULK TRUCK 1 F-550 PICKUP
Pre-Job Safety Meeting	09/16/2013 06:25							ALL HES EMPLOYEES AND RIG CREW
Start Job	09/16/2013 06:38							TD:1175 TP: 1127.93 SJ: 41.60 9 5/8 32.3# H-40 CSG 13 1/2 OH MUD WT: 9.6 PPG VIS-60
Test Lines	09/16/2013 06:39					3000.0		PRESSURE TEST OK
Pump Spacer	09/16/2013 06:43		4	20			127.0	FRESH H2O SPACER
Activity Description	Date/Time	Cht #	Rate bbl/min	Volume bbl		Pressure psig		Comments
				Stage	Total	Tubing	Casing	

Sold To #: 300721

Ship To #: 3105799

Quote # :

Sales Order #: 900747514

SUMMIT Version: 7.3.0106

Monday, September 16, 2013 07:59:00

Pump Lead Cement	09/16/2013 06:51		8	67.8			420.0	160 SKS 2.38 YIELD 13.75 GAL/SK LEAD CEMENT WEIGHT VERIFIED VIA MUD SCALES THROUGHOUT LEAD CEMENT
Pump Tail Cement	09/16/2013 07:00		8	60.1			380.0	160SKS 2.11 YIELD 11.75 GAL/SK TAIL CEMENT WEIGHT VERIFIED VIA MUD SCALES THROUGHOUT TAIL CEMENT
Shutdown	09/16/2013 07:08							
Drop Plug	09/16/2013 07:10							PLUG AWAY NO PROBLEMS WASHED UP ON TOP OF PLUG AS PER COMPANY REP
Pump Displacement	09/16/2013 07:10		10	85.5			628.0	FRESH WATER DISPLACEMENT
Slow Rate	09/16/2013 07:20		2	75			265.0	SLOW RATE TO BUMP PLUG
Bump Plug	09/16/2013 07:25		2	85.5			776.0	PSI BEFORE BUMPING PLUG @ 280 BUMPED UP TO 776 PSI
Check Floats	09/16/2013 07:27							FLOATS ARE HOLDING 1 BBL BACK TO DISPLACEMENT TANKS
End Job	09/16/2013 07:29							PIPE WAS STATIC THROUGHOUT JOB RETURNED 30 BBLs OF CEMENT TO SURFACE
Comment	09/16/2013 07:30							RIG USED 80#S OF SUGAR AND ADJUSTED TICKET ACCORDINGLY REMOVED ADD HOURS AND DERRICK CHARGE FROM TICKET
Pre-Rig Down Safety Meeting	09/16/2013 07:35							ALL HES EMPLOYEES
Rig-Down Equipment	09/16/2013 07:45							
Pre-Convoy Safety Meeting	09/16/2013 08:50							ALL HES EMPLOYEES
Activity Description	Date/Time	Cht	Rate bbl/ min	Volume bbl		Pressure psig		Comments

HALLIBURTON

Cementing Job Log

		#		Stage	Total	Tubing	Casing	
Crew Leave Location	09/16/2013 09:00							THANK YOU FOR USING HALLIBURTON CEMENT DUSTIN SMITH AND CREW

Sold To # : 300721

Ship To # :3105799

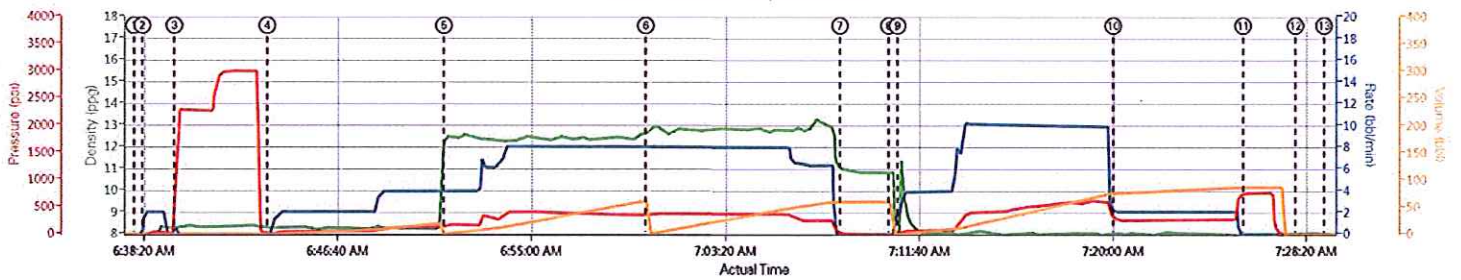
Quote # :

Sales Order # : 900747514

SUMMIT Version: 7.3.0106

Monday, September 16, 2013 07:59:00

WPX - RU 43-5 - 9 5/8 SURFACE



DH Density (ppg) Comb Pump Rate (bbl/min) FS Pump Press (psi) Pump Stg Tot (bbl)

① Start Job 7:59:0,-12,0 ④ Pump Fresh Water Spacer 8:3,0,10,0 ⑦ Shutdown 11:02,0,10,0 ⑩ Slow Rate 8:05,2,1,290,76.4 ⑬ End Job 7:58,0,-15,0
 ② Fill Lines 6:78,2,2,70,2 ⑤ Pump Lead Cement 12:55,4,175,1.1 ⑧ Drop Top Plug 10:55,0,-6,00,5 ⑪ Bump Plug 8:05,0,763,37.4
 ③ Test Lines 8:31,0,1427,0.1 ⑥ Pump Tail Cement 12:7,8,374,1.1 ⑨ Pump Displacement 11:07,2,2,9,0,6 ⑫ Check Floats 8:02,0,-15,0

▼ HALLIBURTON | iCem® Service

Created: 2013-09-16 04:35:27, Version: 2.0.606

Edit

Customer: WPX ENERGY ROCKY MOUNTAIN LLC-
EBUS

Job Date: 9/16/2013 5:16:45 AM

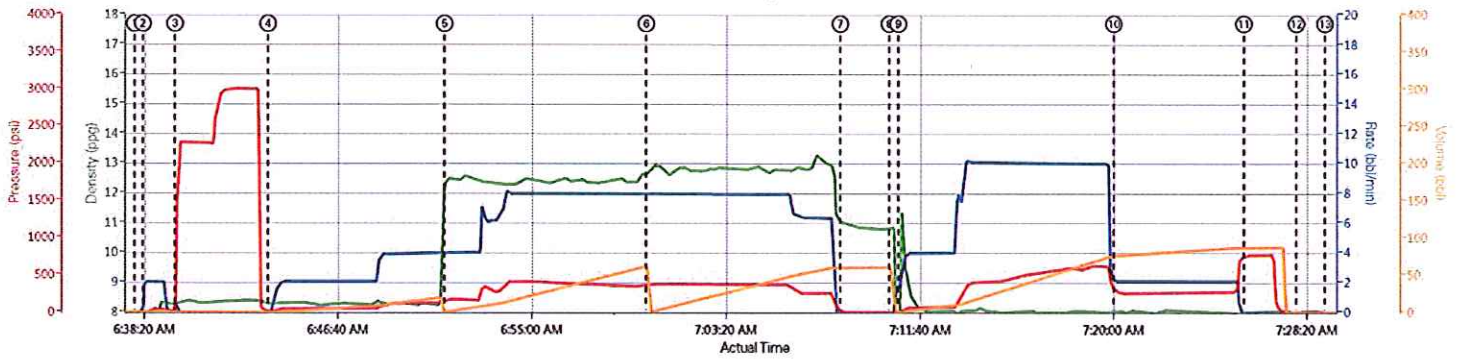
Well: RU 43-5

Representative: RICK OAKS

Sales Order #: 900747514

ELITE # 9: DUSTIN SMITH / ADAM ANDERSON

WPX - RU 43-5 - 9 5/8 SURFACE



DH Density (ppg) Comb Pump Rate (bbl/min) PS Pump Press (psi) Pump Stg Tot (bbl)

▼ HALLIBURTON | iCem® Service

Created: 2013-09-16 04:35:27, Version: 2.0.606

Edit

Customer: WPX ENERGY ROCKY MOUNTAIN LLC-
EBUS

Job Date: 9/16/2013 5:16:48 AM

Well: RU 43-5

Representative: RICK OAKS

Sales Order #: 900747514

ELITE # 9: DUSTIN SMITH / ADAM ANDERSON