

**BILL BARRETT CORPORATION E-BILL
DO NOT MAIL-1099 18TH ST,STE 2300W
DENVER, Colorado**

Hawkins 5-61-21-3340 BH

SST 17

Post Job Summary

Cement Intermediate Casing

Date Prepared: 09/10/2013
Version: 1

Service Supervisor: OTERI, VAUGHN

Submitted by: HINDS, MOLLYE

HALLIBURTON

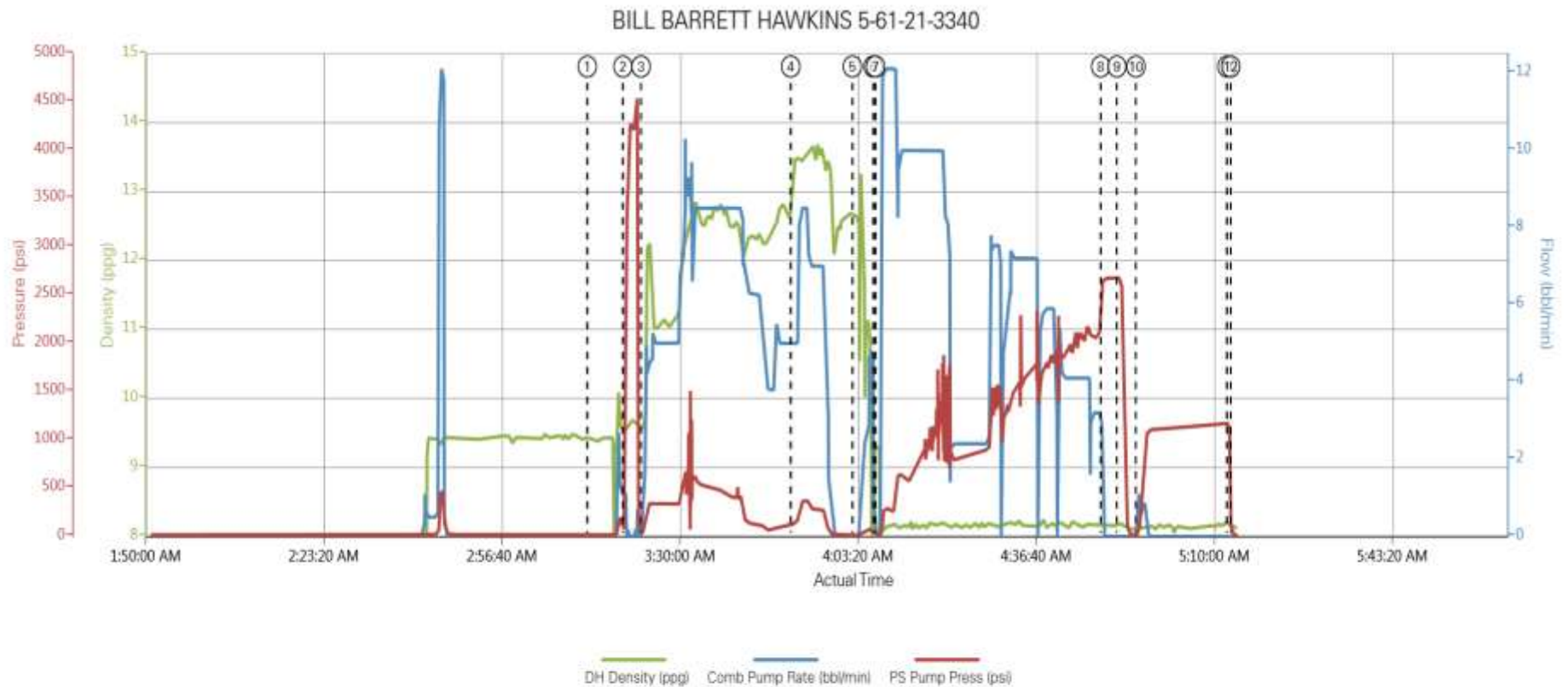
Wellbore Geometry

Job Tubulars					MD		TVD	
Type	Description	Size in	ID in	Wt lbm/ft	Top ft	Bottom ft	Top ft	Bottom ft
Casing	9 5/8" Surface Casing	9.63	8.921	36.00	0.00	846.00		
Open Hole Section	8 3/4" Open Hole		8.750		846.00	6,375.00	846.00	6,116.00
Casing	7" Intermediate Casing	7.00	6.276	26.00	0.00	6,375.00	0.00	6,116.00

Pumping Schedule

Stage /Plug #	Fluid #	Fluid Type	Fluid Name	Surface Density lbm/gal	Avg Rate bbl/min	Surface Volume	Downhole Volume
1	1	Spacer	TUNED SPACER III	11.50	5.00	40.0 bbl	40.0 bbl
1	2	Cement Slurry	ExtendaCem B1	12.50	8.50	405.0 sacks	405.0 sacks
1	3	Cement Slurry	EXPANDACEM B1	13.50	5.00	150.0 sacks	150.0 sacks
1	4	Mud	MUD DISPLACEMENT	9.60	8.00	241.0 bbl	241.0 bbl

Data Acquisition



- | | | |
|--------------------|---------------------|-----------|
| ① Start Job | ⑥ Drop Top Plug | ⓫ Other |
| ② Test Lines | ⑦ Pump Displacement | ⓬ End Job |
| ③ Pump Spacer 1 | ⑧ Bump Plug | |
| ④ Pump Tail Cement | ⑨ Other | |
| ⑤ Shutdown | ⑩ Pressure Up Well | |

▲ Halliburton | iCem Service®

Created 2013-09-06 01:47:32, Version 1.4.96

Edit

Service Supervisor Reports

Job Log

Date/Time	Chart #	Activity Code	Pump Rate	Cum Vol	Pump		Pressure (psig)	Comments
09/05/2013 20:30		Arrive at Location from Service Center						ARRIVE ON LOCATION FOUND THAT THEY HAD 2 RACKS OF CASING LEFT TO RUN IN THE HOLE
09/06/2013 00:30		Casing on Bottom						CASING TAG BOTTOM
09/06/2013 03:11		Start Job						PRELOADED PLUG INTO HEAD WITNESSED BY COMPANY REP
09/06/2013 03:18		Test Lines					4285.0	PRESSURE TEST LINES AND PUMPS FOUND NO LEAKS PRESSURE HELD GOOD
09/06/2013 03:22		Pump Spacer 1	5	40			340.0	MIXED 11.0PPG WITH FRESH WATER
09/06/2013 03:33		Pump Lead Cement	8.5	142			540.0	MIXED 12.5PPG ECONOCHEM WITH FRESH WATER
09/06/2013 03:50		Pump Tail Cement	5	46			158.0	MIXED 13.5PPG FRACCEM WITH FRESH WATER
09/06/2013 04:01		Shutdown						
09/06/2013 04:05		Drop Top Plug						RELEASED PLUG WITNESSED BY COMPANY REP
09/06/2013 04:06		Pump Displacement	8	241			1200.0	PUMPED FRESH WATER
09/06/2013 04:48		Bump Plug						BUMP PLUG 500 OVER FINAL PRESSURE
09/06/2013 04:51		Check Floats						RELEASE PRESSURE BACK TO THE PUMP TRUCK.FLOATS HELD
09/06/2013 04:53		Pressure Up Well					1000.0	PRESSURE TEST CASING PER BILL BARRETT POLICY
09/06/2013 05:12		Other						RELEASED PRESSURE BACK TO PUMP TRUCK
09/06/2013 05:13		End Job						

HALLIBURTON

The Road to Excellence Starts with Safety

Sold To #: 343492	Ship To #: 3097527	Quote #:	Sales Order #: 900723088
Customer: BILL BARRETT CORPORATION E-BILL		Customer Rep: South, Jodi	
Well Name: Hawkins	Well #: 5-61-21-3340 BH	API/UWI #: 05-123-37756	
Field: WATTENBURG	City (SAP): KERSEY	County/Parish: Weld	State: Colorado
Lat: N 40.383 deg. OR N 40 deg. 22 min. 58.832 secs.		Long: W 104.223 deg. OR W -105 deg. 46 min. 38.788 secs.	
Contractor: SST		Rig/Platform Name/Num: SST 17	
Job Purpose: Cement Intermediate Casing			
Well Type: Development Well		Job Type: Cement Intermediate Casing	
Sales Person: GREGORY, JON		Srv Supervisor: OTERI, VAUGHN	MBU ID Emp #: 443828

Job Personnel

HES Emp Name	Exp Hrs	Emp #	HES Emp Name	Exp Hrs	Emp #	HES Emp Name	Exp Hrs	Emp #
MAYFIELD, BYRON L	0.0	528751	NIELSON, BRANDON K	0.0	479703	OTERI, VAUGHN Steeves	0.0	443828
WHIPPLE, WESLEY Morgan	0.0	518611						

Equipment

HES Unit #	Distance-1 way	HES Unit #	Distance-1 way	HES Unit #	Distance-1 way	HES Unit #	Distance-1 way
10857080C	60 mile	10866497C	60 mile	11064535	60 mile	11633846C	60 mile
11667703C	60 mile	11764737	60 mile	12010172	60 mile		

Job Hours

Date	On Location Hours	Operating Hours	Date	On Location Hours	Operating Hours	Date	On Location Hours	Operating Hours

TOTAL Total is the sum of each column separately

Job

Formation Name	Formation Depth (MD)	Top	Bottom	Form Type	Job depth MD	Job Depth TVD	Water Depth	Perforation Depth (MD)	From	To	Deparated Loc
				BHST	6375. ft	6116. ft					

Job Times

Date	Time	Time Zone
05 - Sep - 2013	16:30	MST
05 - Sep - 2013	20:30	MST
06 - Sep - 2013	03:11	MST
06 - Sep - 2013	05:13	MST
06 - Sep - 2013	06:30	MST

Well Data

Description	New / Used	Max pressure psig	Size in	ID in	Weight lbm/ft	Thread	Grade	Top MD ft	Bottom MD ft	Top TVD ft	Bottom TVD ft
8 3/4" Open Hole				8.75				846.	6375.	846.	6116.
7" Intermediate Casing	New		7.	6.276	26.	LTC	HCP110	.	6375.	.	6116.
9 5/8" Surface Casing	Unknown		9.625	8.921	36.		J-55	.	846.		

Fluid Data

Stage/Plug #: 1

Fluid #	Stage Type	Fluid Name	Qty	Qty uom	Mixing Density lbm/gal	Yield ft3/sk	Mix Fluid Gal/sk	Rate bbl/min	Total Mix Fluid Gal/sk
---------	------------	------------	-----	---------	------------------------	--------------	------------------	--------------	------------------------

HALLIBURTON

1	TUNED SPACER III	TUNED SPACER III - SBM (483826)	40.00	bbl	11.5	7.21	53.96	5.0	
	146.5 lbm/bbl	BARITE, 100 LB SK (100003680)							
	36.09 gal/bbl	FRESH WATER							
2	ExtendaCem B1	ECONOCEM (TM) SYSTEM (452992)	405.0	sacks	12.5	1.97	10.72	8.5	10.72
	5 lbm	SILICALITE - COMPACTED, 50 LB SK (100012223)							
	10.72 Gal	FRESH WATER							
3	EXPANDACEM B1	FRACCEM (TM) SYSTEM (452963)	150.0	sacks	13.5	1.74	8.3	5.0	8.3
	8.3 Gal	FRESH WATER							
4	MUD DISPLACEMENT		241.00	bbl	9.6			8.0	
The Information Stated Herein Is Correct			Customer Representative Signature						