

Synergy Resources

Well Name: **SRC Eberle 13-32NHZ**

Surface Location: SRC Eberle 14-32CHZM Pad Sec.32-T1N-R66W
North American Datum 1983 , US State Plane 1983 , Colorado Northern Zone

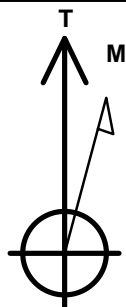
Ground Elevation: 5032.0

+N/-S	+E/-W	Northing	Easting	Latitude	Longitude	Slot
0.0	22.7	1245146.30	3197602.30	40.004155	-104.794614	

RKB - 12' WELL @ 5044.0ft (RKB - 12')

WELLBORE TARGET DETAILS

Name	TVD	+N/-S	+E/-W	Shape
SHL 1355'FSL & 869'FEL	1.0	0.0	22.7	Point
BHL 2165'FSL & 475'FWL	7482.0	807.6	-3920.5	Point



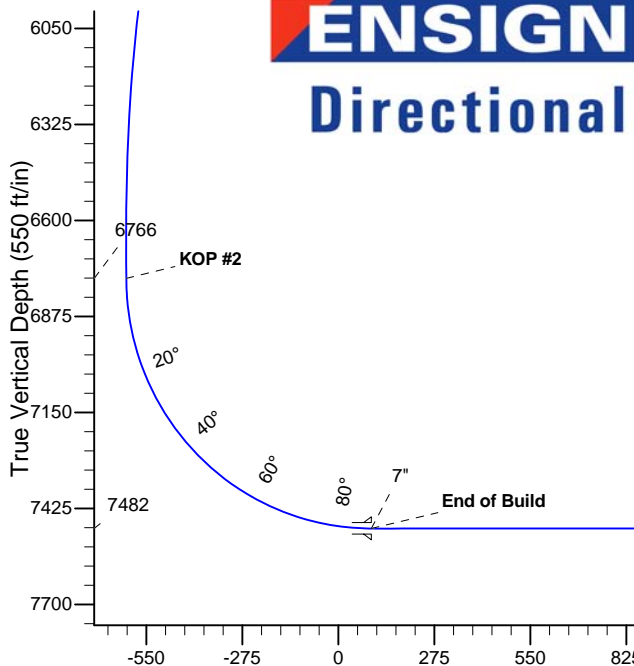
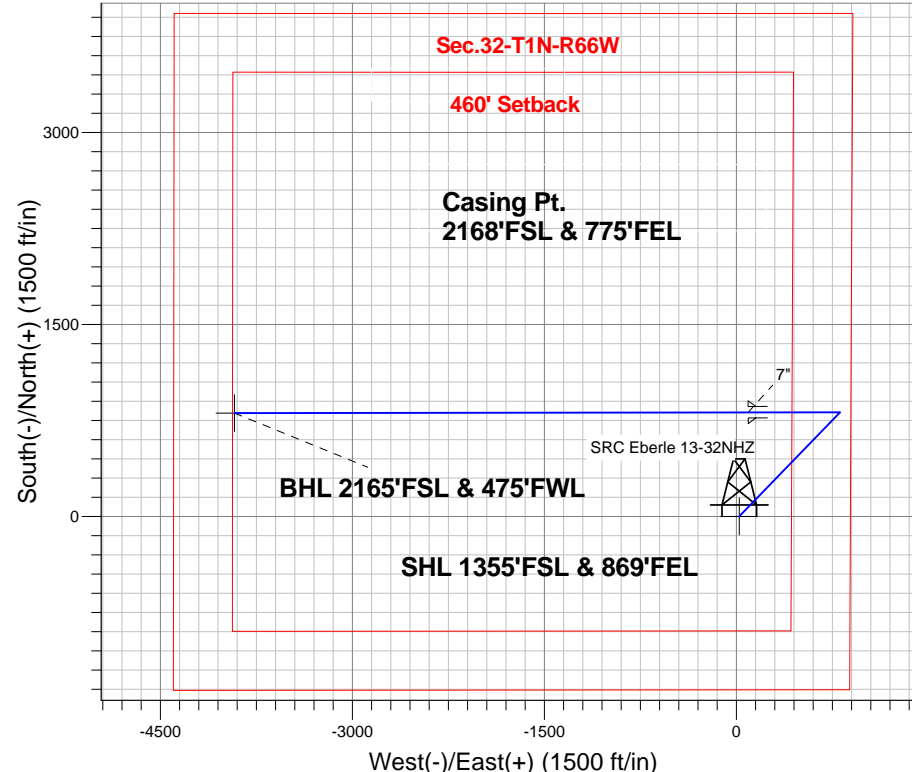
Azimuths to True North
Magnetic North: 8.51°

Magnetic Field
Strength: 52653.9snT
Dip Angle: 66.64°
Date: 12/18/2013
Model: IGRF2010

SRC Eberle 14-32CHZM Pad Sec.32-T1N-R66W
SRC Eberle 13-32NHZ
Plan #1 (12-26-13)
15:20, December 26 2013

ANNOTATIONS

TVD	MD	Annotation
800.0	800.0	KOP #1
6765.8	6883.3	KOP #2
7482.0	8008.3	End of Build



SECTION DETAILS

Sec	MD	Inc	Azi	TVD	+N/-S	+E/-W	DLeg	TFace	VSec	Target
1	0.0	0.00	0.00	0.0	0.0	22.7	0.00	0.00	0.0	
2	800.0	0.00	0.00	800.0	0.0	22.7	0.00	0.00	0.0	
3	1416.3	12.33	44.03	1411.6	47.5	68.6	2.00	44.03	-35.4	
4	6101.2	12.33	44.03	5988.4	766.5	763.8	0.00	0.00	-572.2	
5	6717.5	0.00	0.00	6600.0	814.0	809.7	2.00	180.00	-607.7	
6	6883.3	0.00	0.00	6765.8	814.0	809.7	0.00	0.00	-607.7	
7	8008.3	90.00	269.92	7482.0	813.0	93.5	8.00	269.92	93.8	
8	12022.3	90.00	269.92	7482.0	807.6	-3920.5	0.00	0.00	4025.1	BHL 2165'FSL & 475'FWL

BHL 2165'FSL & 475'FWL

Vertical Section at 281.57° (550 ft/in)



Synergy Resources

SEC.32-T1N-R66W

SRC Eberle 14-32CHZM Pad Sec.32-T1N-R66W

SRC Eberle 13-32NHZ

Wellbore #1

Plan: Plan #1 (12-26-13)

Standard Planning Report

26 December, 2013

Plan Sections										
Measured Depth (ft)	Inclination (°)	Azimuth (°)	Vertical Depth (ft)	+N/-S (ft)	+E/-W (ft)	Dogleg Rate (°/100ft)	Build Rate (°/100ft)	Turn Rate (°/100ft)	TFO (°)	Target
0.0	0.00	0.00	0.0	0.0	22.7	0.00	0.00	0.00	0.00	
800.0	0.00	0.00	800.0	0.0	22.7	0.00	0.00	0.00	0.00	
1,416.3	12.33	44.03	1,411.6	47.5	68.6	2.00	2.00	0.00	44.03	
6,101.2	12.33	44.03	5,988.4	766.5	763.8	0.00	0.00	0.00	0.00	
6,717.5	0.00	0.00	6,600.0	814.0	809.7	2.00	-2.00	0.00	180.00	
6,883.3	0.00	0.00	6,765.8	814.0	809.7	0.00	0.00	0.00	0.00	
8,008.3	90.00	269.92	7,482.0	813.0	93.5	8.00	8.00	0.00	269.92	
12,022.3	90.00	269.92	7,482.0	807.6	-3,920.5	0.00	0.00	0.00	0.00	BHL 2165'FSL & 47

Database:	Landmark	Local Co-ordinate Reference:	Well SRC Eberle 13-32NHZ
Company:	Synergy Resources	TVD Reference:	WELL @ 5044.0ft (RKB - 12')
Project:	SEC.32-T1N-R66W	MD Reference:	WELL @ 5044.0ft (RKB - 12')
Site:	SRC Eberle 14-32CHZM Pad Sec.32-T1N-R66W	North Reference:	True
Well:	SRC Eberle 13-32NHZ	Survey Calculation Method:	Minimum Curvature
Wellbore:	Wellbore #1		
Design:	Plan #1 (12-26-13)		

Planned Survey

Measured Depth (ft)	Inclination (°)	Azimuth (°)	Vertical Depth (ft)	+N/-S (ft)	+E/-W (ft)	Vertical Section (ft)	Dogleg Rate (°/100ft)	Build Rate (°/100ft)	Turn Rate (°/100ft)
0.0	0.00	0.00	0.0	0.0	22.7	0.0	0.00	0.00	0.00
1.0	0.00	0.00	1.0	0.0	22.7	0.0	0.00	0.00	0.00
SHL 1355'FSL & 869'FEL									
100.0	0.00	0.00	100.0	0.0	22.7	0.0	0.00	0.00	0.00
200.0	0.00	0.00	200.0	0.0	22.7	0.0	0.00	0.00	0.00
300.0	0.00	0.00	300.0	0.0	22.7	0.0	0.00	0.00	0.00
400.0	0.00	0.00	400.0	0.0	22.7	0.0	0.00	0.00	0.00
500.0	0.00	0.00	500.0	0.0	22.7	0.0	0.00	0.00	0.00
600.0	0.00	0.00	600.0	0.0	22.7	0.0	0.00	0.00	0.00
700.0	0.00	0.00	700.0	0.0	22.7	0.0	0.00	0.00	0.00
800.0	0.00	0.00	800.0	0.0	22.7	0.0	0.00	0.00	0.00
KOP #1									
900.0	2.00	44.03	900.0	1.2	23.9	-0.9	2.00	2.00	0.00
1,000.0	4.00	44.03	999.8	5.0	27.5	-3.7	2.00	2.00	0.00
1,100.0	6.00	44.03	1,099.5	11.3	33.6	-8.4	2.00	2.00	0.00
1,200.0	8.00	44.03	1,198.7	20.0	42.1	-15.0	2.00	2.00	0.00
1,300.0	10.00	44.03	1,297.5	31.3	52.9	-23.4	2.00	2.00	0.00
1,400.0	12.00	44.03	1,395.6	45.0	66.2	-33.6	2.00	2.00	0.00
1,416.3	12.33	44.03	1,411.6	47.5	68.6	-35.4	2.00	2.00	0.00
1,500.0	12.33	44.03	1,493.3	60.3	81.0	-45.0	0.00	0.00	0.00
1,600.0	12.33	44.03	1,591.0	75.7	95.9	-56.5	0.00	0.00	0.00
1,700.0	12.33	44.03	1,688.7	91.0	110.7	-67.9	0.00	0.00	0.00
1,800.0	12.33	44.03	1,786.4	106.4	125.5	-79.4	0.00	0.00	0.00
1,900.0	12.33	44.03	1,884.1	121.7	140.4	-90.9	0.00	0.00	0.00
2,000.0	12.33	44.03	1,981.8	137.1	155.2	-102.3	0.00	0.00	0.00
2,100.0	12.33	44.03	2,079.5	152.4	170.0	-113.8	0.00	0.00	0.00
2,200.0	12.33	44.03	2,177.2	167.7	184.9	-125.2	0.00	0.00	0.00
2,300.0	12.33	44.03	2,274.9	183.1	199.7	-136.7	0.00	0.00	0.00
2,400.0	12.33	44.03	2,372.6	198.4	214.6	-148.2	0.00	0.00	0.00
2,500.0	12.33	44.03	2,470.3	213.8	229.4	-159.6	0.00	0.00	0.00
2,600.0	12.33	44.03	2,568.0	229.1	244.2	-171.1	0.00	0.00	0.00
2,700.0	12.33	44.03	2,665.7	244.5	259.1	-182.5	0.00	0.00	0.00
2,800.0	12.33	44.03	2,763.4	259.8	273.9	-194.0	0.00	0.00	0.00
2,900.0	12.33	44.03	2,861.1	275.2	288.8	-205.4	0.00	0.00	0.00
3,000.0	12.33	44.03	2,958.7	290.5	303.6	-216.9	0.00	0.00	0.00
3,100.0	12.33	44.03	3,056.4	305.9	318.4	-228.4	0.00	0.00	0.00
3,200.0	12.33	44.03	3,154.1	321.2	333.3	-239.8	0.00	0.00	0.00
3,300.0	12.33	44.03	3,251.8	336.6	348.1	-251.3	0.00	0.00	0.00
3,400.0	12.33	44.03	3,349.5	351.9	363.0	-262.7	0.00	0.00	0.00
3,500.0	12.33	44.03	3,447.2	367.3	377.8	-274.2	0.00	0.00	0.00
3,600.0	12.33	44.03	3,544.9	382.6	392.6	-285.6	0.00	0.00	0.00
3,700.0	12.33	44.03	3,642.6	398.0	407.5	-297.1	0.00	0.00	0.00
3,800.0	12.33	44.03	3,740.3	413.3	422.3	-308.6	0.00	0.00	0.00
3,900.0	12.33	44.03	3,838.0	428.7	437.2	-320.0	0.00	0.00	0.00
4,000.0	12.33	44.03	3,935.7	444.0	452.0	-331.5	0.00	0.00	0.00
4,100.0	12.33	44.03	4,033.4	459.4	466.8	-342.9	0.00	0.00	0.00
4,200.0	12.33	44.03	4,131.1	474.7	481.7	-354.4	0.00	0.00	0.00
4,300.0	12.33	44.03	4,228.8	490.1	496.5	-365.9	0.00	0.00	0.00
4,400.0	12.33	44.03	4,326.5	505.4	511.3	-377.3	0.00	0.00	0.00
4,500.0	12.33	44.03	4,424.2	520.8	526.2	-388.8	0.00	0.00	0.00
4,600.0	12.33	44.03	4,521.9	536.1	541.0	-400.2	0.00	0.00	0.00
4,700.0	12.33	44.03	4,619.6	551.5	555.9	-411.7	0.00	0.00	0.00
4,800.0	12.33	44.03	4,717.2	566.8	570.7	-423.1	0.00	0.00	0.00

Database:	Landmark	Local Co-ordinate Reference:	Well SRC Eberle 13-32NHZ
Company:	Synergy Resources	TVD Reference:	WELL @ 5044.0ft (RKB - 12')
Project:	SEC.32-T1N-R66W	MD Reference:	WELL @ 5044.0ft (RKB - 12')
Site:	SRC Eberle 14-32CHZM Pad Sec.32-T1N-R66W	North Reference:	True
Well:	SRC Eberle 13-32NHZ	Survey Calculation Method:	Minimum Curvature
Wellbore:	Wellbore #1		
Design:	Plan #1 (12-26-13)		

Planned Survey									
Measured Depth (ft)	Inclination (°)	Azimuth (°)	Vertical Depth (ft)	+N/-S (ft)	+E/-W (ft)	Vertical Section (ft)	Dogleg Rate (°/100ft)	Build Rate (°/100ft)	Turn Rate (°/100ft)
4,900.0	12.33	44.03	4,814.9	582.1	585.5	-434.6	0.00	0.00	0.00
5,000.0	12.33	44.03	4,912.6	597.5	600.4	-446.1	0.00	0.00	0.00
5,100.0	12.33	44.03	5,010.3	612.8	615.2	-457.5	0.00	0.00	0.00
5,200.0	12.33	44.03	5,108.0	628.2	630.1	-469.0	0.00	0.00	0.00
5,300.0	12.33	44.03	5,205.7	643.5	644.9	-480.4	0.00	0.00	0.00
5,400.0	12.33	44.03	5,303.4	658.9	659.7	-491.9	0.00	0.00	0.00
5,500.0	12.33	44.03	5,401.1	674.2	674.6	-503.3	0.00	0.00	0.00
5,600.0	12.33	44.03	5,498.8	689.6	689.4	-514.8	0.00	0.00	0.00
5,700.0	12.33	44.03	5,596.5	704.9	704.3	-526.3	0.00	0.00	0.00
5,800.0	12.33	44.03	5,694.2	720.3	719.1	-537.7	0.00	0.00	0.00
5,900.0	12.33	44.03	5,791.9	735.6	733.9	-549.2	0.00	0.00	0.00
6,000.0	12.33	44.03	5,889.6	751.0	748.8	-560.6	0.00	0.00	0.00
6,100.0	12.33	44.03	5,987.3	766.3	763.6	-572.1	0.00	0.00	0.00
6,101.2	12.33	44.03	5,988.4	766.5	763.8	-572.2	0.00	0.00	0.00
6,200.0	10.35	44.03	6,085.3	780.5	777.3	-582.7	2.00	-2.00	0.00
6,300.0	8.35	44.03	6,184.0	792.2	788.6	-591.4	2.00	-2.00	0.00
6,400.0	6.35	44.03	6,283.2	801.4	797.5	-598.2	2.00	-2.00	0.00
6,500.0	4.35	44.03	6,382.7	808.1	804.0	-603.2	2.00	-2.00	0.00
6,600.0	2.35	44.03	6,482.5	812.3	808.0	-606.4	2.00	-2.00	0.00
6,700.0	0.35	44.03	6,582.5	813.9	809.7	-607.6	2.00	-2.00	0.00
6,717.5	0.00	0.00	6,600.0	814.0	809.7	-607.7	2.00	-2.00	0.00
6,800.0	0.00	0.00	6,682.5	814.0	809.7	-607.7	0.00	0.00	0.00
6,883.3	0.00	0.00	6,765.8	814.0	809.7	-607.7	0.00	0.00	0.00
KOP #2									
6,900.0	1.34	269.92	6,782.5	814.0	809.5	-607.5	8.00	8.00	0.00
7,000.0	9.34	269.92	6,882.0	814.0	800.2	-598.4	8.00	8.00	0.00
7,100.0	17.34	269.92	6,979.2	813.9	777.2	-575.8	8.00	8.00	0.00
7,200.0	25.34	269.92	7,072.3	813.9	740.8	-540.2	8.00	8.00	0.00
7,300.0	33.34	269.92	7,159.4	813.8	691.8	-492.3	8.00	8.00	0.00
7,400.0	41.34	269.92	7,238.8	813.7	631.2	-432.9	8.00	8.00	0.00
7,500.0	49.34	269.92	7,309.1	813.6	560.2	-363.3	8.00	8.00	0.00
7,600.0	57.34	269.92	7,368.7	813.5	480.0	-284.8	8.00	8.00	0.00
7,700.0	65.34	269.92	7,416.7	813.4	392.4	-198.9	8.00	8.00	0.00
7,800.0	73.34	269.92	7,451.9	813.3	298.9	-107.4	8.00	8.00	0.00
7,900.0	81.34	269.92	7,473.8	813.2	201.4	-11.9	8.00	8.00	0.00
8,000.0	89.34	269.92	7,482.0	813.0	101.8	85.6	8.00	8.00	0.00
8,008.3	90.00	269.92	7,482.0	813.0	93.5	93.8	8.00	8.00	0.00
End of Build - 7"									
8,100.0	90.00	269.92	7,482.0	812.9	1.8	183.6	0.00	0.00	0.00
8,200.0	90.00	269.92	7,482.0	812.8	-98.2	281.5	0.00	0.00	0.00
8,300.0	90.00	269.92	7,482.0	812.6	-198.2	379.5	0.00	0.00	0.00
8,400.0	90.00	269.92	7,482.0	812.5	-298.2	477.4	0.00	0.00	0.00
8,500.0	90.00	269.92	7,482.0	812.4	-398.2	575.3	0.00	0.00	0.00
8,600.0	90.00	269.92	7,482.0	812.2	-498.2	673.3	0.00	0.00	0.00
8,700.0	90.00	269.92	7,482.0	812.1	-598.2	771.2	0.00	0.00	0.00
8,800.0	90.00	269.92	7,482.0	811.9	-698.2	869.2	0.00	0.00	0.00
8,900.0	90.00	269.92	7,482.0	811.8	-798.2	967.1	0.00	0.00	0.00
9,000.0	90.00	269.92	7,482.0	811.7	-898.2	1,065.0	0.00	0.00	0.00
9,100.0	90.00	269.92	7,482.0	811.5	-998.2	1,163.0	0.00	0.00	0.00
9,200.0	90.00	269.92	7,482.0	811.4	-1,098.2	1,260.9	0.00	0.00	0.00
9,300.0	90.00	269.92	7,482.0	811.3	-1,198.2	1,358.9	0.00	0.00	0.00
9,400.0	90.00	269.92	7,482.0	811.1	-1,298.2	1,456.8	0.00	0.00	0.00
9,500.0	90.00	269.92	7,482.0	811.0	-1,398.2	1,554.7	0.00	0.00	0.00

Database:	Landmark	Local Co-ordinate Reference:	Well SRC Eberle 13-32NHZ
Company:	Synergy Resources	TVD Reference:	WELL @ 5044.0ft (RKB - 12')
Project:	SEC.32-T1N-R66W	MD Reference:	WELL @ 5044.0ft (RKB - 12')
Site:	SRC Eberle 14-32CHZM Pad Sec.32-T1N-R66W	North Reference:	True
Well:	SRC Eberle 13-32NHZ	Survey Calculation Method:	Minimum Curvature
Wellbore:	Wellbore #1		
Design:	Plan #1 (12-26-13)		

Planned Survey

Measured Depth (ft)	Inclination (°)	Azimuth (°)	Vertical Depth (ft)	+N/-S (ft)	+E/-W (ft)	Vertical Section (ft)	Dogleg Rate (°/100ft)	Build Rate (°/100ft)	Turn Rate (°/100ft)
9,600.0	90.00	269.92	7,482.0	810.9	-1,498.2	1,652.7	0.00	0.00	0.00
9,700.0	90.00	269.92	7,482.0	810.7	-1,598.2	1,750.6	0.00	0.00	0.00
9,800.0	90.00	269.92	7,482.0	810.6	-1,698.2	1,848.5	0.00	0.00	0.00
9,900.0	90.00	269.92	7,482.0	810.5	-1,798.2	1,946.5	0.00	0.00	0.00
10,000.0	90.00	269.92	7,482.0	810.3	-1,898.2	2,044.4	0.00	0.00	0.00
10,100.0	90.00	269.92	7,482.0	810.2	-1,998.2	2,142.4	0.00	0.00	0.00
10,200.0	90.00	269.92	7,482.0	810.1	-2,098.2	2,240.3	0.00	0.00	0.00
10,300.0	90.00	269.92	7,482.0	809.9	-2,198.2	2,338.2	0.00	0.00	0.00
10,400.0	90.00	269.92	7,482.0	809.8	-2,298.2	2,436.2	0.00	0.00	0.00
10,500.0	90.00	269.92	7,482.0	809.6	-2,398.2	2,534.1	0.00	0.00	0.00
10,600.0	90.00	269.92	7,482.0	809.5	-2,498.2	2,632.1	0.00	0.00	0.00
10,700.0	90.00	269.92	7,482.0	809.4	-2,598.2	2,730.0	0.00	0.00	0.00
10,800.0	90.00	269.92	7,482.0	809.2	-2,698.2	2,827.9	0.00	0.00	0.00
10,900.0	90.00	269.92	7,482.0	809.1	-2,798.2	2,925.9	0.00	0.00	0.00
11,000.0	90.00	269.92	7,482.0	809.0	-2,898.2	3,023.8	0.00	0.00	0.00
11,100.0	90.00	269.92	7,482.0	808.8	-2,998.2	3,121.8	0.00	0.00	0.00
11,200.0	90.00	269.92	7,482.0	808.7	-3,098.2	3,219.7	0.00	0.00	0.00
11,300.0	90.00	269.92	7,482.0	808.6	-3,198.2	3,317.6	0.00	0.00	0.00
11,400.0	90.00	269.92	7,482.0	808.4	-3,298.2	3,415.6	0.00	0.00	0.00
11,500.0	90.00	269.92	7,482.0	808.3	-3,398.2	3,513.5	0.00	0.00	0.00
11,600.0	90.00	269.92	7,482.0	808.2	-3,498.2	3,611.5	0.00	0.00	0.00
11,700.0	90.00	269.92	7,482.0	808.0	-3,598.2	3,709.4	0.00	0.00	0.00
11,800.0	90.00	269.92	7,482.0	807.9	-3,698.2	3,807.3	0.00	0.00	0.00
11,900.0	90.00	269.92	7,482.0	807.8	-3,798.2	3,905.3	0.00	0.00	0.00
12,000.0	90.00	269.92	7,482.0	807.6	-3,898.2	4,003.2	0.00	0.00	0.00
12,022.3	90.00	269.92	7,482.0	807.6	-3,920.5	4,025.1	0.00	0.00	0.00
BHL 2165'FSL & 475'FWL									

Casing Points

Measured Depth (ft)	Vertical Depth (ft)	Name	Casing Diameter (")	Hole Diameter (")
8,008.3	7,482.0	7"	7	7-1/2

Plan Annotations

Measured Depth (ft)	Vertical Depth (ft)	Local Coordinates		Comment
		+N/-S (ft)	+E/-W (ft)	
800.0	800.0	0.0	22.7	KOP #1
6,883.3	6,765.8	814.0	809.7	KOP #2
8,008.3	7,482.0	813.0	93.5	End of Build



Synergy Resources

SEC.32-T1N-R66W

SRC Eberle 14-32CHZM Pad Sec.32-T1N-R66W

SRC Eberle 13-32NHZ

Wellbore #1

Plan #1 (12-26-13)

Anticollision Report

26 December, 2013

Company:	Synergy Resources	Local Co-ordinate Reference:	Well SRC Eberle 13-32NHZ
Project:	SEC.32-T1N-R66W	TVD Reference:	WELL @ 5044.0ft (RKB - 12')
Reference Site:	SRC Eberle 14-32CHZM Pad Sec.32-T1N-R66W	MD Reference:	WELL @ 5044.0ft (RKB - 12')
Site Error:	0.0ft	North Reference:	True
Reference Well:	SRC Eberle 13-32NHZ	Survey Calculation Method:	Minimum Curvature
Well Error:	0.0ft	Output errors are at	2.00 sigma
Reference Wellbore	Wellbore #1	Database:	Landmark
Reference Design:	Plan #1 (12-26-13)	Offset TVD Reference:	Offset Datum

Reference	Plan #1 (12-26-13)		
Filter type:	NO GLOBAL FILTER: Using user defined selection & filtering criteria		
Interpolation Method:	MD Interval 100.0ft	Error Model:	ISCWSA
Depth Range:	Unlimited	Scan Method:	Closest Approach 3D
Results Limited by:	Maximum center-center distance of 10,000.0ft	Error Surface:	Elliptical Conic
Warning Levels Evaluated at:	2.00 Sigma		

Survey Tool Program	Date	12/26/2013		
From (ft)	To (ft)	Survey (Wellbore)	Tool Name	Description
0.0	12,022.3	Plan #1 (12-26-13) (Wellbore #1)	MWD	MWD - Standard

Summary						
Site Name	Reference Measured Depth (ft)	Offset Measured Depth (ft)	Distance Between Centres (ft)	Distance Between Ellipses (ft)	Separation Factor	Warning
Offset Well - Wellbore - Design						
SRC Eberle 14-32CHZM Pad Sec.32-T1N-R66W						
SRC Eberle 13-32CHZ - Wellbore #1 - Plan #1 (12-26-13)	800.0	799.0	22.7	19.3	6.735	CC, ES
SRC Eberle 13-32CHZ - Wellbore #1 - Plan #1 (12-26-13)	12,022.3	12,145.2	375.1	145.9	1.637	SF
SRC Eberle 14-32CHZM - Wellbore #1 - Plan #1 (12-26-13)	166.0	168.0	45.4	44.9	86.301	CC
SRC Eberle 14-32CHZM - Wellbore #1 - Plan #1 (12-26-13)	200.0	202.0	45.4	44.7	66.905	ES
SRC Eberle 14-32CHZM - Wellbore #1 - Plan #1 (12-26-13)	12,022.3	12,163.6	1,698.5	1,449.5	6.821	SF
SRC Eberle 14-32NHZM - Wellbore #1 - Plan #1 (12-26-13)	366.3	367.3	20.7	19.3	14.556	CC
SRC Eberle 14-32NHZM - Wellbore #1 - Plan #1 (12-26-13)	400.0	401.0	20.7	19.2	13.159	ES
SRC Eberle 14-32NHZM - Wellbore #1 - Plan #1 (12-26-13)	12,022.3	11,976.0	1,352.2	1,102.4	5.413	SF
SRC Eberle B-32CHZ - Wellbore #1 - Plan #1 (12-26-13)	800.0	798.0	45.4	42.0	13.479	CC, ES
SRC Eberle B-32CHZ - Wellbore #1 - Plan #1 (12-26-13)	12,022.3	12,129.9	1,028.5	781.3	4.160	SF
SRC Eberle B-32NHZ - Wellbore #1 - Plan #1 (12-26-13)	800.0	797.0	68.1	64.7	20.232	CC, ES
SRC Eberle B-32NHZ - Wellbore #1 - Plan #1 (12-26-13)	12,022.3	11,980.2	677.2	427.4	2.710	SF

Offset Design												
SRC Eberle 14-32CHZM Pad Sec.32-T1N-R66W - SRC Eberle 13-32CHZ - Wellbore #1 - Plan #1 (12-26-13)												
Survey Program: 0-MWD												
Reference												
Measured Depth (ft)	Vertical Depth (ft)	Measured Depth (ft)	Vertical Depth (ft)	Reference (ft)	Offset (ft)	Highside Toolface (°)	Offset Wellbore Centre +N/-S (ft)	Offset Wellbore Centre +E/-W (ft)	Distance Between Centres (ft)	Distance Between Ellipses (ft)	Minimum Separation (ft)	Separation Factor
0.0	0.0	0.0	0.0	0.0	0.0	-90.04	0.0	0.0	22.7			
100.0	100.0	99.0	99.0	0.1	0.1	-90.04	0.0	0.0	22.7	22.5	0.22	101.464
200.0	200.0	199.0	199.0	0.3	0.3	-90.04	0.0	0.0	22.7	22.0	0.67	33.765
300.0	300.0	299.0	299.0	0.6	0.6	-90.04	0.0	0.0	22.7	21.6	1.12	20.232
400.0	400.0	399.0	399.0	0.8	0.8	-90.04	0.0	0.0	22.7	21.1	1.57	14.443
500.0	500.0	499.0	499.0	1.0	1.0	-90.04	0.0	0.0	22.7	20.7	2.02	11.230
600.0	600.0	599.0	599.0	1.2	1.2	-90.04	0.0	0.0	22.7	20.2	2.47	9.186
700.0	700.0	699.0	699.0	1.5	1.5	-90.04	0.0	0.0	22.7	19.8	2.92	7.772
800.0	800.0	799.0	799.0	1.7	1.7	-90.04	0.0	0.0	22.7	19.3	3.37	6.735 CC, ES
900.0	900.0	899.0	899.0	1.9	1.9	-137.06	0.0	0.0	23.9	20.1	3.81	6.276
1,000.0	999.8	998.8	998.8	2.1	2.1	-144.33	0.0	0.0	28.0	23.7	4.26	6.579
1,100.0	1,099.5	1,099.0	1,099.0	2.4	2.4	-152.25	0.4	0.7	34.6	29.9	4.69	7.383
1,200.0	1,198.7	1,199.2	1,199.2	2.6	2.6	-159.04	1.7	3.0	43.2	38.1	5.11	8.446
1,300.0	1,297.5	1,299.4	1,299.3	2.9	2.8	-164.57	3.9	6.7	53.8	48.2	5.54	9.711
1,400.0	1,395.6	1,399.6	1,399.2	3.2	3.0	-168.97	7.0	12.0	66.3	60.4	5.96	11.132

CC - Min centre to center distance or convergent point, SF - min separation factor, ES - min ellipse separation

Offset Design												Offset Site Error:		0.0 ft
Survey Program: 0-MWD												Offset Well Error:		0.0 ft
Reference		Offset		Semi Major Axis			Distance					Warning		
Measured Depth	Vertical Depth	Measured Depth	Vertical Depth	Reference	Offset	Highside Toolface	Offset Wellbore Centre	Between Centres	Between Ellipses	Minimum Separation	Separation Factor			
(ft)	(ft)	(ft)	(ft)	(ft)	(ft)	(°)	+N/-S (ft)	+E/-W (ft)	(ft)	(ft)	(ft)			
1,500.0	1,493.3	1,499.8	1,499.2	3.6	3.2	-172.39	11.0	18.8	79.7	73.3	6.41	12.437		
1,600.0	1,591.0	1,600.5	1,599.4	3.9	3.5	-175.03	15.9	27.1	91.6	84.7	6.87	13.328		
1,700.0	1,688.7	1,701.6	1,699.9	4.3	3.7	-177.27	21.7	37.0	101.9	94.5	7.34	13.872		
1,800.0	1,786.4	1,803.0	1,800.4	4.7	4.0	-179.34	28.4	48.4	110.6	102.8	7.83	14.128		
1,900.0	1,884.1	1,904.6	1,900.8	5.2	4.3	178.65	36.1	61.4	117.8	109.5	8.33	14.141		
2,000.0	1,981.8	2,006.4	2,001.2	5.6	4.6	176.61	44.6	76.0	123.4	114.6	8.85	13.951		
2,100.0	2,079.5	2,107.3	2,100.5	6.0	5.0	174.52	53.9	91.8	127.7	118.3	9.38	13.614		
2,200.0	2,177.2	2,207.1	2,198.6	6.4	5.3	172.54	63.3	107.7	131.9	121.9	9.93	13.283		
2,300.0	2,274.9	2,307.0	2,296.7	6.9	5.7	170.69	72.6	123.5	136.2	125.7	10.49	12.980		
2,400.0	2,372.6	2,406.8	2,394.8	7.3	6.0	168.95	81.9	139.3	140.6	129.6	11.07	12.701		
2,500.0	2,470.3	2,506.6	2,492.9	7.8	6.4	167.32	91.2	155.2	145.2	133.6	11.67	12.443		
2,600.0	2,568.0	2,606.4	2,591.0	8.2	6.8	165.79	100.5	171.0	149.9	137.6	12.28	12.205		
2,700.0	2,665.7	2,706.2	2,689.1	8.6	7.1	164.35	109.8	186.9	154.7	141.8	12.91	11.983		
2,800.0	2,763.4	2,806.0	2,787.2	9.1	7.5	163.00	119.2	202.7	159.6	146.1	13.55	11.777		
2,900.0	2,861.1	2,905.8	2,885.3	9.5	7.9	161.73	128.5	218.6	164.6	150.4	14.21	11.584		
3,000.0	2,958.7	3,005.6	2,983.4	10.0	8.3	160.54	137.8	234.4	169.6	154.8	14.87	11.405		
3,100.0	3,056.4	3,105.5	3,081.5	10.4	8.7	159.41	147.1	250.3	174.7	159.2	15.55	11.238		
3,200.0	3,154.1	3,205.3	3,179.6	10.9	9.1	158.35	156.4	266.1	179.9	163.7	16.23	11.082		
3,300.0	3,251.8	3,305.1	3,277.7	11.3	9.5	157.35	165.7	282.0	185.2	168.2	16.93	10.937		
3,400.0	3,349.5	3,404.9	3,375.8	11.8	9.9	156.41	175.1	297.8	190.4	172.8	17.63	10.800		
3,500.0	3,447.2	3,504.7	3,473.9	12.2	10.3	155.51	184.4	313.7	195.8	177.4	18.34	10.673		
3,600.0	3,544.9	3,604.5	3,572.1	12.7	10.7	154.67	193.7	329.5	201.2	182.1	19.06	10.553		
3,700.0	3,642.6	3,704.3	3,670.2	13.1	11.0	153.86	203.0	345.4	206.6	186.8	19.79	10.441		
3,800.0	3,740.3	3,804.1	3,768.3	13.6	11.4	153.10	212.3	361.2	212.1	191.5	20.52	10.336		
3,900.0	3,838.0	3,903.9	3,866.4	14.0	11.8	152.38	221.6	377.1	217.6	196.3	21.25	10.237		
4,000.0	3,935.7	4,003.8	3,964.5	14.5	12.2	151.69	231.0	392.9	223.1	201.1	21.99	10.144		
4,100.0	4,033.4	4,103.6	4,062.6	15.0	12.7	151.04	240.3	408.8	228.7	205.9	22.74	10.057		
4,200.0	4,131.1	4,203.4	4,160.7	15.4	13.1	150.42	249.6	424.6	234.2	210.8	23.49	9.974		
4,300.0	4,228.8	4,303.2	4,258.8	15.9	13.5	149.82	258.9	440.5	239.9	215.6	24.24	9.896		
4,400.0	4,326.5	4,403.0	4,356.9	16.3	13.9	149.26	268.2	456.3	245.5	220.5	24.99	9.823		
4,500.0	4,424.2	4,502.8	4,455.0	16.8	14.3	148.72	277.5	472.2	251.2	225.4	25.75	9.753		
4,600.0	4,521.9	4,602.6	4,553.1	17.2	14.7	148.20	286.9	488.0	256.9	230.3	26.51	9.688		
4,700.0	4,619.6	4,702.4	4,651.2	17.7	15.1	147.71	296.2	503.9	262.6	235.3	27.28	9.626		
4,800.0	4,717.2	4,802.3	4,749.3	18.1	15.5	147.23	305.5	519.7	268.3	240.2	28.04	9.567		
4,900.0	4,814.9	4,902.1	4,847.4	18.6	15.9	146.78	314.8	535.6	274.0	245.2	28.81	9.511		
5,000.0	4,912.6	5,001.9	4,945.5	19.1	16.3	146.34	324.1	551.4	279.8	250.2	29.58	9.458		
5,100.0	5,010.3	5,101.7	5,043.6	19.5	16.7	145.93	333.4	567.3	285.6	255.2	30.36	9.407		
5,200.0	5,108.0	5,201.5	5,141.7	20.0	17.1	145.52	342.8	583.1	291.3	260.2	31.13	9.359		
5,300.0	5,205.7	5,301.3	5,239.8	20.4	17.5	145.14	352.1	598.9	297.1	265.2	31.91	9.313		
5,400.0	5,303.4	5,401.1	5,337.9	20.9	17.9	144.77	361.4	614.8	303.0	270.3	32.68	9.270		
5,500.0	5,401.1	5,500.9	5,436.0	21.3	18.3	144.41	370.7	630.6	308.8	275.3	33.46	9.228		
5,600.0	5,498.8	5,600.8	5,534.1	21.8	18.7	144.07	380.0	646.5	314.6	280.4	34.24	9.188		
5,700.0	5,596.5	5,700.6	5,632.2	22.2	19.1	143.74	389.3	662.3	320.5	285.5	35.02	9.150		
5,800.0	5,694.2	5,800.4	5,730.3	22.7	19.6	143.42	398.7	678.2	326.3	290.5	35.81	9.114		
5,900.0	5,791.9	5,900.2	5,828.5	23.2	20.0	143.11	408.0	694.0	332.2	295.6	36.59	9.079		
6,000.0	5,889.6	6,000.0	5,926.6	23.6	20.4	142.81	417.3	709.9	338.1	300.7	37.37	9.046		
6,100.0	5,987.3	6,099.8	6,024.7	24.1	20.8	142.53	426.6	725.7	344.0	305.8	38.16	9.014		
6,200.0	6,085.3	6,199.7	6,122.8	24.5	21.2	142.13	435.9	741.6	348.5	309.6	38.96	8.946		
6,300.0	6,184.0	6,299.5	6,221.0	24.8	21.6	141.37	445.3	757.4	350.4	310.6	39.77	8.809		
6,400.0	6,283.2	6,396.2	6,316.0	25.0	22.0	140.30	454.1	772.5	349.8	309.2	40.59	8.618		
6,500.0	6,382.7	6,489.5	6,408.3	25.2	22.2	139.26	461.3	784.8	348.3	307.0	41.26	8.441		

Company:	Synergy Resources	Local Co-ordinate Reference:	Well SRC Eberle 13-32NHZ
Project:	SEC.32-T1N-R66W	TVD Reference:	WELL @ 5044.0ft (RKB - 12')
Reference Site:	SRC Eberle 14-32CHZM Pad Sec.32-T1N-R66W	MD Reference:	WELL @ 5044.0ft (RKB - 12')
Site Error:	0.0ft	North Reference:	True
Reference Well:	SRC Eberle 13-32NHZ	Survey Calculation Method:	Minimum Curvature
Well Error:	0.0ft	Output errors are at	2.00 sigma
Reference Wellbore	Wellbore #1	Database:	Landmark
Reference Design:	Plan #1 (12-26-13)	Offset TVD Reference:	Offset Datum

Offset Design		SRC Eberle 14-32CHZM Pad Sec.32-T1N-R66W - SRC Eberle 13-32CHZ - Wellbore #1 - Plan #1 (12-2										Offset Site Error:		0.0 ft
Survey Program: 0-MWD												Offset Well Error:		0.0 ft
Reference		Offset		Semi Major Axis			Distance							Warning
Measured Depth	Vertical Depth	Measured Depth	Vertical Depth	Reference	Offset	Highside Toolface	Offset Wellbore Centre		Between Centres	Between Ellipses	Minimum Separation	Separation Factor		
(ft)	(ft)	(ft)	(ft)	(ft)	(ft)	(°)	+N/-S (ft)	+E/-W (ft)	(ft)	(ft)	(ft)			
6,600.0	6,482.5	6,583.1	6,501.1	25.4	22.5	138.27	467.0	794.5	346.0	304.2	41.85	8.267		
6,700.0	6,582.5	6,676.8	6,594.5	25.5	22.7	137.31	471.2	801.6	343.1	300.7	42.37	8.096		
6,800.0	6,682.5	6,770.8	6,688.4	25.6	22.8	-179.40	473.9	806.1	340.2	300.6	39.61	8.589		
6,900.0	6,782.5	6,865.1	6,782.6	25.8	23.0	-89.67	474.9	808.0	339.0	295.8	43.21	7.847		
6,938.8	6,821.3	6,902.8	6,820.3	25.8	23.0	-90.00	475.0	808.0	339.0	295.7	43.36	7.819		
7,000.0	6,882.0	6,963.5	6,881.0	25.8	23.1	-91.22	475.0	808.0	339.1	295.3	43.77	7.747		
7,100.0	6,979.2	7,062.9	6,980.4	25.7	23.2	-94.66	475.0	805.9	340.2	295.6	44.59	7.630		
7,200.0	7,072.3	7,166.1	7,082.4	25.6	23.2	-98.29	474.9	790.7	342.8	297.7	45.05	7.610		
7,300.0	7,159.4	7,273.0	7,184.5	25.3	23.1	-101.76	474.9	759.7	346.6	301.6	45.04	7.696		
7,400.0	7,238.8	7,383.6	7,284.2	25.1	22.8	-105.00	474.8	711.9	351.4	306.8	44.59	7.881		
7,500.0	7,309.1	7,498.2	7,378.4	24.8	22.6	-107.91	474.8	646.9	356.8	313.0	43.84	8.138		
7,600.0	7,368.7	7,616.7	7,463.6	24.5	22.3	-110.42	474.7	564.8	362.2	319.2	43.03	8.418		
7,700.0	7,416.7	7,738.7	7,536.0	24.3	22.1	-112.47	474.5	466.7	367.2	324.8	42.48	8.646		
7,800.0	7,451.9	7,863.8	7,591.9	24.1	22.2	-114.01	474.4	355.0	371.3	328.8	42.53	8.731		
7,900.0	7,473.8	7,991.2	7,627.9	24.2	22.8	-115.00	474.2	233.0	374.1	330.6	43.46	8.608		
8,000.0	7,482.0	8,119.8	7,641.9	24.5	23.9	-115.40	474.1	105.3	375.2	329.9	45.36	8.273		
8,100.0	7,482.0	8,222.9	7,642.0	25.3	25.2	-115.41	473.9	2.2	375.3	327.4	47.87	7.839		
8,200.0	7,482.0	8,322.9	7,642.0	26.7	26.7	-115.41	473.8	-97.8	375.3	324.5	50.74	7.396		
8,300.0	7,482.0	8,422.9	7,642.0	28.4	28.4	-115.41	473.7	-197.8	375.3	321.3	53.94	6.957		
8,400.0	7,482.0	8,522.9	7,642.0	30.3	30.3	-115.41	473.5	-297.8	375.3	317.8	57.42	6.535		
8,500.0	7,482.0	8,622.9	7,642.0	32.4	32.4	-115.41	473.4	-397.8	375.2	314.1	61.13	6.139		
8,600.0	7,482.0	8,722.9	7,642.0	34.6	34.5	-115.41	473.3	-497.8	375.2	310.2	65.03	5.771		
8,700.0	7,482.0	8,822.9	7,642.0	36.8	36.8	-115.41	473.1	-597.8	375.2	306.2	69.08	5.432		
8,800.0	7,482.0	8,922.9	7,642.0	39.2	39.1	-115.41	473.0	-697.8	375.2	302.0	73.27	5.121		
8,900.0	7,482.0	9,022.9	7,642.0	41.6	41.5	-115.41	472.9	-797.8	375.2	297.7	77.57	4.837		
9,000.0	7,482.0	9,122.9	7,642.0	44.0	43.9	-115.41	472.7	-897.8	375.2	293.3	81.96	4.578		
9,100.0	7,482.0	9,222.9	7,642.0	46.5	46.4	-115.41	472.6	-997.8	375.2	288.8	86.43	4.341		
9,200.0	7,482.0	9,322.9	7,642.0	49.0	48.9	-115.41	472.5	-1,097.8	375.2	284.2	90.97	4.125		
9,300.0	7,482.0	9,422.9	7,642.0	51.5	51.4	-115.41	472.4	-1,197.8	375.2	279.6	95.57	3.926		
9,400.0	7,482.0	9,522.9	7,642.0	54.1	54.0	-115.41	472.2	-1,297.8	375.2	275.0	100.21	3.744		
9,500.0	7,482.0	9,622.9	7,642.0	56.7	56.6	-115.41	472.1	-1,397.8	375.2	270.3	104.90	3.577		
9,600.0	7,482.0	9,722.9	7,642.0	59.3	59.2	-115.41	472.0	-1,497.8	375.2	265.6	109.63	3.422		
9,700.0	7,482.0	9,822.9	7,642.0	61.9	61.8	-115.41	471.8	-1,597.8	375.2	260.8	114.39	3.280		
9,800.0	7,482.0	9,922.9	7,642.0	64.6	64.4	-115.41	471.7	-1,697.8	375.2	256.0	119.17	3.148		
9,900.0	7,482.0	10,022.9	7,642.0	67.2	67.1	-115.41	471.6	-1,797.8	375.2	251.2	123.99	3.026		
10,000.0	7,482.0	10,122.9	7,642.0	69.9	69.7	-115.41	471.4	-1,897.8	375.2	246.4	128.82	2.912		
10,100.0	7,482.0	10,222.9	7,642.0	72.6	72.4	-115.41	471.3	-1,997.8	375.2	241.5	133.68	2.807		
10,200.0	7,482.0	10,322.9	7,642.0	75.3	75.1	-115.41	471.2	-2,097.8	375.2	236.6	138.56	2.708		
10,300.0	7,482.0	10,422.9	7,642.0	77.9	77.8	-115.41	471.1	-2,197.8	375.2	231.7	143.45	2.615		
10,400.0	7,482.0	10,522.9	7,642.0	80.6	80.5	-115.41	470.9	-2,297.8	375.2	226.8	148.35	2.529		
10,500.0	7,482.0	10,622.9	7,642.0	83.3	83.2	-115.41	470.8	-2,397.8	375.2	221.9	153.27	2.448		
10,600.0	7,482.0	10,722.9	7,642.0	86.1	85.9	-115.41	470.7	-2,497.8	375.2	217.0	158.20	2.371		
10,700.0	7,482.0	10,822.9	7,642.0	88.8	88.6	-115.41	470.5	-2,597.8	375.2	212.0	163.14	2.300		
10,800.0	7,482.0	10,922.9	7,642.0	91.5	91.3	-115.41	470.4	-2,697.8	375.1	207.1	168.09	2.232		
10,900.0	7,482.0	11,022.9	7,642.0	94.2	94.1	-115.41	470.3	-2,797.8	375.1	202.1	173.06	2.168		
11,000.0	7,482.0	11,122.9	7,642.0	97.0	96.8	-115.42	470.1	-2,897.8	375.1	197.1	178.02	2.107		
11,100.0	7,482.0	11,222.9	7,642.0	99.7	99.5	-115.42	470.0	-2,997.8	375.1	192.1	183.00	2.050		
11,200.0	7,482.0	11,322.9	7,642.0	102.4	102.3	-115.42	469.9	-3,097.8	375.1	187.1	187.98	1.996		
11,300.0	7,482.0	11,422.9	7,642.0	105.2	105.0	-115.42	469.7	-3,197.8	375.1	182.2	192.98	1.944		
11,400.0	7,482.0	11,522.9	7,642.0	107.9	107.8	-115.42	469.6	-3,297.8	375.1	177.2	197.97	1.895		
11,500.0	7,482.0	11,622.9	7,642.0	110.7	110.5	-115.42	469.5	-3,397.8	375.1	172.1	202.97	1.848		

CC - Min centre to center distance or convergent point, SF - min separation factor, ES - min ellipse separation

Company:	Synergy Resources	Local Co-ordinate Reference:	Well SRC Eberle 13-32NHZ
Project:	SEC.32-T1N-R66W	TVD Reference:	WELL @ 5044.0ft (RKB - 12')
Reference Site:	SRC Eberle 14-32CHZM Pad Sec.32-T1N-R66W	MD Reference:	WELL @ 5044.0ft (RKB - 12')
Site Error:	0.0ft	North Reference:	True
Reference Well:	SRC Eberle 13-32NHZ	Survey Calculation Method:	Minimum Curvature
Well Error:	0.0ft	Output errors are at	2.00 sigma
Reference Wellbore	Wellbore #1	Database:	Landmark
Reference Design:	Plan #1 (12-26-13)	Offset TVD Reference:	Offset Datum

Offset Design											SRC Eberle 14-32CHZM Pad Sec.32-T1N-R66W - SRC Eberle 13-32CHZ - Wellbore #1 - Plan #1 (12-2		Offset Site Error:		0.0 ft	
Survey Program: 0-MWD													Offset Well Error:		0.0 ft	
Reference		Offset		Semi Major Axis			Distance							Warning		
Measured Depth	Vertical Depth	Measured Depth	Vertical Depth	Reference	Offset	Highside Toolface	Offset Wellbore Centre		Between Centres	Between Ellipses	Minimum Separation	Separation Factor				
(ft)	(ft)	(ft)	(ft)	(ft)	(ft)	(°)	+N/-S (ft)	+E/-W (ft)	(ft)	(ft)	(ft)					
11,600.0	7,482.0	11,722.9	7,642.0	113.4	113.3	-115.42	469.4	-3,497.8	375.1	167.1	207.98	1.804				
11,700.0	7,482.0	11,822.9	7,642.0	116.2	116.0	-115.42	469.2	-3,597.8	375.1	162.1	212.99	1.761				
11,800.0	7,482.0	11,922.9	7,642.0	118.9	118.8	-115.42	469.1	-3,697.8	375.1	157.1	218.01	1.721				
11,900.0	7,482.0	12,022.9	7,642.0	121.7	121.5	-115.42	469.0	-3,797.8	375.1	152.1	223.03	1.682				
12,000.0	7,482.0	12,122.9	7,642.0	124.4	124.3	-115.42	468.8	-3,897.8	375.1	147.0	228.05	1.645				
12,022.3	7,482.0	12,145.2	7,642.0	125.1	124.9	-115.42	468.8	-3,920.1	375.1	145.9	229.17	1.637 SF				

Company:	Synergy Resources	Local Co-ordinate Reference:	Well SRC Eberle 13-32NHZ
Project:	SEC.32-T1N-R66W	TVD Reference:	WELL @ 5044.0ft (RKB - 12')
Reference Site:	SRC Eberle 14-32CHZM Pad Sec.32-T1N-R66W	MD Reference:	WELL @ 5044.0ft (RKB - 12')
Site Error:	0.0ft	North Reference:	True
Reference Well:	SRC Eberle 13-32NHZ	Survey Calculation Method:	Minimum Curvature
Well Error:	0.0ft	Output errors are at	2.00 sigma
Reference Wellbore	Wellbore #1	Database:	Landmark
Reference Design:	Plan #1 (12-26-13)	Offset TVD Reference:	Offset Datum

Offset Design SRC Eberle 14-32CHZM Pad Sec.32-T1N-R66W - SRC Eberle 14-32CHZM - Wellbore #1 - Plan #1 (12													Offset Site Error:	0.0 ft
Survey Program: 0-MWD													Offset Well Error:	0.0 ft
Measured Depth (ft)	Vertical Depth (ft)	Measured Depth (ft)	Vertical Depth (ft)	Reference	Offset	Highside Toolface (°)	Offset Wellbore Centre +N/-S (ft)	+E/-W (ft)	Between Centres (ft)	Between Ellipses (ft)	Minimum Separation (ft)	Separation Factor	Warning	
0.0	0.0	2.0	2.0	0.0	0.0	90.43	-0.4	68.1	45.4	45.4	0.00	N/A		
100.0	100.0	102.0	102.0	0.1	0.1	90.43	-0.4	68.1	45.4	45.2	0.23	197.962		
166.0	166.0	168.0	168.0	0.3	0.3	90.43	-0.4	68.1	45.4	44.9	0.53	86.301 CC		
200.0	200.0	202.0	202.0	0.3	0.3	90.43	-0.4	68.1	45.4	44.7	0.68	66.905 ES		
300.0	300.0	301.5	301.5	0.6	0.5	91.28	-1.0	68.7	46.0	44.9	1.11	41.575		
400.0	400.0	400.9	400.8	0.8	0.7	93.65	-3.1	70.3	47.8	46.2	1.53	31.155		
500.0	500.0	500.0	499.9	1.0	1.0	97.20	-6.4	73.1	50.9	48.9	1.98	25.734		
600.0	600.0	599.3	599.0	1.2	1.2	101.47	-11.0	77.0	55.5	53.0	2.44	22.782		
700.0	700.0	698.2	697.6	1.5	1.4	105.97	-17.0	81.9	61.8	58.9	2.91	21.246		
800.0	800.0	796.8	795.7	1.7	1.7	110.33	-24.2	88.0	69.9	66.5	3.40	20.586		
900.0	900.0	895.0	893.3	1.9	2.0	71.26	-32.7	95.0	79.3	75.5	3.79	20.914		
1,000.0	999.8	992.6	990.0	2.1	2.3	77.56	-42.4	103.1	90.0	85.8	4.24	21.233		
1,100.0	1,099.5	1,089.4	1,085.8	2.4	2.6	84.46	-53.3	112.2	102.9	98.2	4.69	21.927		
1,200.0	1,198.7	1,185.3	1,180.4	2.6	3.0	91.34	-65.2	122.2	118.8	113.6	5.17	22.983		
1,300.0	1,297.5	1,280.0	1,273.6	2.9	3.3	97.76	-78.3	133.1	138.2	132.5	5.68	24.337		
1,400.0	1,395.6	1,374.8	1,366.6	3.2	3.7	103.57	-92.4	144.8	161.3	155.0	6.24	25.864		
1,500.0	1,493.3	1,470.1	1,460.1	3.6	4.1	108.88	-106.7	156.8	186.7	179.9	6.83	27.320		
1,600.0	1,591.0	1,565.5	1,553.6	3.9	4.5	113.00	-121.0	168.7	213.4	205.9	7.46	28.615		
1,700.0	1,688.7	1,660.9	1,647.2	4.3	4.9	116.20	-135.3	180.6	240.8	232.7	8.09	29.754		
1,800.0	1,786.4	1,756.2	1,740.7	4.7	5.3	118.76	-149.6	192.6	268.8	260.1	8.74	30.752		
1,900.0	1,884.1	1,851.6	1,834.2	5.2	5.7	120.83	-163.9	204.5	297.3	287.9	9.40	31.627		
2,000.0	1,981.8	1,947.0	1,927.8	5.6	6.1	122.54	-178.2	216.4	326.0	315.9	10.06	32.398		
2,100.0	2,079.5	2,042.3	2,021.3	6.0	6.6	123.97	-192.5	228.4	355.0	344.2	10.73	33.080		
2,200.0	2,177.2	2,137.7	2,114.8	6.4	7.0	125.19	-206.8	240.3	384.1	372.7	11.40	33.687		
2,300.0	2,274.9	2,233.1	2,208.3	6.9	7.4	126.24	-221.1	252.2	413.3	401.3	12.08	34.230		
2,400.0	2,372.6	2,328.4	2,301.9	7.3	7.8	127.15	-235.4	264.2	442.7	430.0	12.75	34.718		
2,500.0	2,470.3	2,423.8	2,395.4	7.8	8.2	127.95	-249.8	276.1	472.2	458.8	13.43	35.158		
2,600.0	2,568.0	2,519.2	2,488.9	8.2	8.6	128.65	-264.1	288.0	501.7	487.6	14.11	35.557		
2,700.0	2,665.7	2,614.5	2,582.5	8.6	9.1	129.28	-278.4	300.0	531.3	516.5	14.79	35.920		
2,800.0	2,763.4	2,709.9	2,676.0	9.1	9.5	129.84	-292.7	311.9	561.0	545.5	15.47	36.251		
2,900.0	2,861.1	2,805.3	2,769.5	9.5	9.9	130.34	-307.0	323.8	590.7	574.5	16.16	36.555		
3,000.0	2,958.7	2,900.6	2,863.0	10.0	10.3	130.80	-321.3	335.8	620.4	603.6	16.84	36.835		
3,100.0	3,056.4	2,996.0	2,956.6	10.4	10.7	131.21	-335.6	347.7	650.2	632.7	17.53	37.093		
3,200.0	3,154.1	3,091.4	3,050.1	10.9	11.2	131.59	-349.9	359.6	680.0	661.8	18.21	37.332		
3,300.0	3,251.8	3,186.7	3,143.6	11.3	11.6	131.94	-364.2	371.6	709.8	690.9	18.90	37.553		
3,400.0	3,349.5	3,282.1	3,237.2	11.8	12.0	132.25	-378.5	383.5	739.6	720.0	19.59	37.759		
3,500.0	3,447.2	3,377.5	3,330.7	12.2	12.4	132.55	-392.8	395.4	769.5	749.2	20.28	37.951		
3,600.0	3,544.9	3,472.8	3,424.2	12.7	12.8	132.82	-407.1	407.4	799.4	778.4	20.96	38.130		
3,700.0	3,642.6	3,568.2	3,517.7	13.1	13.3	133.07	-421.5	419.3	829.3	807.6	21.65	38.298		
3,800.0	3,740.3	3,663.6	3,611.3	13.6	13.7	133.31	-435.8	431.2	859.2	836.8	22.34	38.456		
3,900.0	3,838.0	3,758.9	3,704.8	14.0	14.1	133.52	-450.1	443.2	889.1	866.1	23.03	38.604		
4,000.0	3,935.7	3,854.3	3,798.3	14.5	14.5	133.73	-464.4	455.1	919.0	895.3	23.72	38.743		
4,100.0	4,033.4	3,949.6	3,891.9	15.0	14.9	133.92	-478.7	467.0	949.0	924.6	24.41	38.875		
4,200.0	4,131.1	4,045.0	3,985.4	15.4	15.4	134.10	-493.0	479.0	978.9	953.8	25.10	38.999		
4,300.0	4,228.8	4,140.4	4,078.9	15.9	15.8	134.27	-507.3	490.9	1,008.9	983.1	25.79	39.116		
4,400.0	4,326.5	4,235.7	4,172.4	16.3	16.2	134.43	-521.6	502.9	1,038.8	1,012.4	26.48	39.227		
4,500.0	4,424.2	4,331.1	4,266.0	16.8	16.6	134.58	-535.9	514.8	1,068.8	1,041.6	27.17	39.333		
4,600.0	4,521.9	4,426.5	4,359.5	17.2	17.0	134.72	-550.2	526.7	1,098.8	1,070.9	27.86	39.433		
4,700.0	4,619.6	4,521.8	4,453.0	17.7	17.5	134.86	-564.5	538.7	1,128.8	1,100.2	28.56	39.528		
4,800.0	4,717.2	4,617.2	4,546.6	18.1	17.9	134.98	-578.8	550.6	1,158.8	1,129.5	29.25	39.619		
4,900.0	4,814.9	4,712.6	4,640.1	18.6	18.3	135.11	-593.1	562.5	1,188.8	1,158.8	29.94	39.705		

CC - Min centre to center distance or convergent point, SF - min separation factor, ES - min ellipse separation

Offset Design												Offset Site Error:	
Survey Program: 0-MWD												Offset Well Error:	
Reference		Offset		Semi Major Axis			Distance					Warning	
Measured Depth (ft)	Vertical Depth (ft)	Measured Depth (ft)	Vertical Depth (ft)	Reference (ft)	Offset (ft)	Highside Toolface (°)	Offset Wellbore Centre +N/-S (ft)	+E/-W (ft)	Between Centres (ft)	Between Ellipses (ft)	Minimum Separation (ft)		Separation Factor
5,000.0	4,912.6	4,807.9	4,733.6	19.1	18.7	135.22	-607.5	574.5	1,218.8	1,188.1	30.63	39.788	
5,100.0	5,010.3	4,903.3	4,827.1	19.5	19.1	135.33	-621.8	586.4	1,248.8	1,217.4	31.32	39.866	
5,200.0	5,108.0	4,998.7	4,920.7	20.0	19.6	135.44	-636.1	598.3	1,278.8	1,246.7	32.02	39.941	
5,300.0	5,205.7	5,094.0	5,014.2	20.4	20.0	135.54	-650.4	610.3	1,308.8	1,276.1	32.71	40.013	
5,400.0	5,303.4	5,189.4	5,107.7	20.9	20.4	135.63	-664.7	622.2	1,338.8	1,305.4	33.40	40.082	
5,500.0	5,401.1	5,284.8	5,201.2	21.3	20.8	135.72	-679.0	634.1	1,368.8	1,334.7	34.09	40.148	
5,600.0	5,498.8	5,380.1	5,294.8	21.8	21.3	135.81	-693.3	646.1	1,398.8	1,364.0	34.79	40.211	
5,700.0	5,596.5	5,475.5	5,388.3	22.2	21.7	135.89	-707.6	658.0	1,428.9	1,393.4	35.48	40.272	
5,800.0	5,694.2	5,570.9	5,481.8	22.7	22.1	135.97	-721.9	669.9	1,458.9	1,422.7	36.17	40.330	
5,900.0	5,791.9	5,666.2	5,575.4	23.2	22.5	136.05	-736.2	681.9	1,488.9	1,452.0	36.87	40.386	
6,000.0	5,889.6	5,761.6	5,668.9	23.6	22.9	136.13	-750.5	693.8	1,518.9	1,481.4	37.56	40.440	
6,100.0	5,987.3	5,857.0	5,762.4	24.1	23.4	136.20	-764.8	705.7	1,549.0	1,510.7	38.25	40.492	
6,200.0	6,085.3	5,952.7	5,856.3	24.5	23.8	136.63	-779.2	717.7	1,577.8	1,538.8	39.02	40.439	
6,300.0	6,184.0	6,049.1	5,950.9	24.8	24.2	136.94	-793.7	729.8	1,604.2	1,564.5	39.70	40.411	
6,400.0	6,283.2	6,146.1	6,046.0	25.0	24.6	137.13	-808.2	741.9	1,628.2	1,587.9	40.33	40.368	
6,500.0	6,382.7	6,243.6	6,141.6	25.2	25.1	137.19	-822.9	754.1	1,649.7	1,608.8	40.92	40.312	
6,600.0	6,482.5	6,341.4	6,237.5	25.4	25.5	137.15	-837.5	766.4	1,668.7	1,627.2	41.46	40.246	
6,700.0	6,582.5	6,516.4	6,410.1	25.5	26.0	136.78	-859.9	785.0	1,683.1	1,641.0	42.06	40.015	
6,800.0	6,682.5	6,697.0	6,589.6	25.6	26.4	-179.57	-874.4	797.1	1,691.1	1,646.5	44.62	37.898	
6,900.0	6,782.5	6,879.3	6,771.7	25.8	26.7	-89.66	-880.2	802.0	1,694.3	1,651.3	42.98	39.423	
7,000.0	6,882.0	6,991.6	6,884.0	25.8	26.8	-89.99	-880.4	802.1	1,694.3	1,651.2	43.17	39.247	
7,002.6	6,884.5	6,994.1	6,886.5	25.8	26.8	-90.00	-880.4	802.1	1,694.3	1,651.2	43.17	39.246	
7,100.0	6,979.2	7,090.6	6,982.9	25.7	26.9	-90.67	-880.4	799.8	1,694.4	1,651.3	43.18	39.239	
7,200.0	7,072.3	7,192.8	7,083.9	25.6	26.9	-91.40	-880.4	784.4	1,694.8	1,651.9	42.98	39.430	
7,300.0	7,159.4	7,298.5	7,184.9	25.3	26.8	-92.11	-880.4	753.6	1,695.5	1,652.9	42.61	39.787	
7,400.0	7,238.8	7,407.9	7,283.5	25.1	26.6	-92.80	-880.4	706.4	1,696.4	1,654.2	42.16	40.235	
7,500.0	7,309.1	7,521.1	7,376.7	24.8	26.4	-93.44	-880.5	642.3	1,697.4	1,655.6	41.76	40.644	
7,600.0	7,368.7	7,638.1	7,461.2	24.5	26.1	-94.02	-880.5	561.6	1,698.4	1,656.8	41.60	40.827	
7,700.0	7,416.7	7,758.7	7,533.4	24.3	25.9	-94.51	-880.6	465.1	1,699.4	1,657.5	41.90	40.560	
7,800.0	7,451.9	7,882.5	7,589.5	24.1	25.6	-94.90	-880.7	355.0	1,700.3	1,657.4	42.87	39.664	
7,900.0	7,473.8	8,008.7	7,626.4	24.2	25.4	-95.18	-880.7	234.5	1,700.9	1,656.3	44.61	38.129	
8,000.0	7,482.0	8,136.5	7,641.7	24.5	25.4	-95.32	-880.8	107.8	1,701.2	1,654.1	47.10	36.118	
8,100.0	7,482.0	8,241.3	7,642.0	25.3	25.8	-95.33	-880.9	2.9	1,701.1	1,651.3	49.89	34.098	
8,200.0	7,482.0	8,341.3	7,642.0	26.7	26.8	-95.33	-881.0	-97.1	1,701.1	1,648.0	53.04	32.070	
8,300.0	7,482.0	8,441.3	7,642.0	28.4	28.4	-95.33	-881.0	-197.1	1,701.0	1,644.4	56.57	30.068	
8,400.0	7,482.0	8,541.3	7,642.0	30.3	30.3	-95.33	-881.1	-297.1	1,700.9	1,640.5	60.41	28.155	
8,500.0	7,482.0	8,641.3	7,642.0	32.4	32.4	-95.33	-881.2	-397.1	1,700.9	1,636.4	64.51	26.365	
8,600.0	7,482.0	8,741.3	7,642.0	34.6	34.6	-95.33	-881.2	-497.1	1,700.8	1,632.0	68.82	24.714	
8,700.0	7,482.0	8,841.3	7,642.0	36.8	36.9	-95.33	-881.3	-597.1	1,700.7	1,627.4	73.30	23.203	
8,800.0	7,482.0	8,941.3	7,642.0	39.2	39.2	-95.33	-881.4	-697.1	1,700.7	1,622.8	77.92	21.825	
8,900.0	7,482.0	9,041.3	7,642.0	41.6	41.7	-95.33	-881.4	-797.1	1,700.6	1,617.9	82.67	20.572	
9,000.0	7,482.0	9,141.3	7,642.0	44.0	44.1	-95.33	-881.5	-897.1	1,700.5	1,613.0	87.51	19.433	
9,100.0	7,482.0	9,241.3	7,642.0	46.5	46.6	-95.33	-881.6	-997.1	1,700.5	1,608.0	92.44	18.396	
9,200.0	7,482.0	9,341.3	7,642.0	49.0	49.1	-95.33	-881.6	-1,097.1	1,700.4	1,603.0	97.43	17.452	
9,300.0	7,482.0	9,441.3	7,642.0	51.5	51.7	-95.33	-881.7	-1,197.1	1,700.3	1,597.9	102.49	16.590	
9,400.0	7,482.0	9,541.3	7,642.0	54.1	54.2	-95.33	-881.8	-1,297.1	1,700.3	1,592.7	107.60	15.802	
9,500.0	7,482.0	9,641.3	7,642.0	56.7	56.8	-95.33	-881.9	-1,397.1	1,700.2	1,587.5	112.76	15.078	
9,600.0	7,482.0	9,741.3	7,642.0	59.3	59.4	-95.33	-881.9	-1,497.1	1,700.1	1,582.2	117.95	14.414	
9,700.0	7,482.0	9,841.3	7,642.0	61.9	62.1	-95.33	-882.0	-1,597.1	1,700.1	1,576.9	123.18	13.801	
9,800.0	7,482.0	9,941.3	7,642.0	64.6	64.7	-95.33	-882.1	-1,697.1	1,700.0	1,571.6	128.44	13.236	
9,900.0	7,482.0	10,041.3	7,642.0	67.2	67.4	-95.33	-882.1	-1,797.1	1,699.9	1,566.2	133.73	12.712	

Company:	Synergy Resources	Local Co-ordinate Reference:	Well SRC Eberle 13-32NHZ
Project:	SEC.32-T1N-R66W	TVD Reference:	WELL @ 5044.0ft (RKB - 12')
Reference Site:	SRC Eberle 14-32CHZM Pad Sec.32-T1N-R66W	MD Reference:	WELL @ 5044.0ft (RKB - 12')
Site Error:	0.0ft	North Reference:	True
Reference Well:	SRC Eberle 13-32NHZ	Survey Calculation Method:	Minimum Curvature
Well Error:	0.0ft	Output errors are at	2.00 sigma
Reference Wellbore	Wellbore #1	Database:	Landmark
Reference Design:	Plan #1 (12-26-13)	Offset TVD Reference:	Offset Datum

Offset Design SRC Eberle 14-32CHZM Pad Sec.32-T1N-R66W - SRC Eberle 14-32CHZM - Wellbore #1 - Plan #1 (12													Offset Site Error:	0.0 ft
Survey Program: 0-MWD													Offset Well Error:	0.0 ft
Measured Depth (ft)	Vertical Depth (ft)	Measured Depth (ft)	Vertical Depth (ft)	Reference	Offset	Highside Toolface (°)	Offset Wellbore Centre +N/-S (ft)	+E/-W (ft)	Between Centres (ft)	Between Ellipses (ft)	Minimum Separation (ft)	Separation Factor	Warning	
10,000.0	7,482.0	10,141.3	7,642.0	69.9	70.0	-95.33	-882.2	-1,897.1	1,699.9	1,560.8	139.04	12.226		
10,100.0	7,482.0	10,241.3	7,642.0	72.6	72.7	-95.33	-882.3	-1,997.1	1,699.8	1,555.4	144.37	11.774		
10,200.0	7,482.0	10,341.3	7,642.0	75.3	75.4	-95.33	-882.3	-2,097.1	1,699.7	1,550.0	149.72	11.353		
10,300.0	7,482.0	10,441.3	7,642.0	77.9	78.1	-95.33	-882.4	-2,197.1	1,699.7	1,544.6	155.08	10.960		
10,400.0	7,482.0	10,541.3	7,642.0	80.6	80.8	-95.33	-882.5	-2,297.1	1,699.6	1,539.1	160.46	10.592		
10,500.0	7,482.0	10,641.3	7,642.0	83.3	83.5	-95.33	-882.5	-2,397.1	1,699.5	1,533.7	165.86	10.247		
10,600.0	7,482.0	10,741.3	7,642.0	86.1	86.2	-95.33	-882.6	-2,497.1	1,699.5	1,528.2	171.27	9.923		
10,700.0	7,482.0	10,841.3	7,642.0	88.8	88.9	-95.33	-882.7	-2,597.1	1,699.4	1,522.7	176.68	9.618		
10,800.0	7,482.0	10,941.3	7,642.0	91.5	91.7	-95.33	-882.7	-2,697.1	1,699.3	1,517.2	182.11	9.331		
10,900.0	7,482.0	11,041.3	7,642.0	94.2	94.4	-95.34	-882.8	-2,797.1	1,699.3	1,511.7	187.55	9.060		
11,000.0	7,482.0	11,141.3	7,642.0	97.0	97.1	-95.34	-882.9	-2,897.1	1,699.2	1,506.2	192.99	8.804		
11,100.0	7,482.0	11,241.3	7,642.0	99.7	99.9	-95.34	-882.9	-2,997.1	1,699.1	1,500.7	198.45	8.562		
11,200.0	7,482.0	11,341.3	7,642.0	102.4	102.6	-95.34	-883.0	-3,097.1	1,699.1	1,495.2	203.91	8.333		
11,300.0	7,482.0	11,441.3	7,642.0	105.2	105.3	-95.34	-883.1	-3,197.1	1,699.0	1,489.6	209.38	8.115		
11,400.0	7,482.0	11,541.3	7,642.0	107.9	108.1	-95.34	-883.1	-3,297.1	1,698.9	1,484.1	214.85	7.908		
11,500.0	7,482.0	11,641.3	7,642.0	110.7	110.8	-95.34	-883.2	-3,397.1	1,698.9	1,478.5	220.33	7.711		
11,600.0	7,482.0	11,741.3	7,642.0	113.4	113.6	-95.34	-883.3	-3,497.1	1,698.8	1,473.0	225.81	7.523		
11,700.0	7,482.0	11,841.3	7,642.0	116.2	116.3	-95.34	-883.4	-3,597.1	1,698.7	1,467.4	231.30	7.344		
11,800.0	7,482.0	11,941.3	7,642.0	118.9	119.1	-95.34	-883.4	-3,697.1	1,698.7	1,461.9	236.80	7.174		
11,900.0	7,482.0	12,041.3	7,642.0	121.7	121.9	-95.34	-883.5	-3,797.1	1,698.6	1,456.3	242.30	7.010		
12,000.0	7,482.0	12,141.3	7,642.0	124.4	124.6	-95.34	-883.6	-3,897.1	1,698.5	1,450.7	247.80	6.855		
12,022.3	7,482.0	12,163.6	7,642.0	125.1	125.2	-95.34	-883.6	-3,919.4	1,698.5	1,449.5	249.03	6.821 SF		

Offset Design													Offset Site Error:		0.0 ft
Survey Program: 0-MWD													Offset Well Error:		0.0 ft
Reference		Offset		Semi Major Axis			Distance						Warning		
Measured Depth	Vertical Depth	Measured Depth	Vertical Depth	Reference	Offset	Highside Toolface	Offset Wellbore Centre		Between Centres	Between Ellipses	Minimum Separation	Separation Factor			
(ft)	(ft)	(ft)	(ft)	(ft)	(ft)	(°)	+N/-S (ft)	+E/-W (ft)	(ft)	(ft)	(ft)				
0.0	0.0	1.0	1.0	0.0	0.0	90.01	0.0	43.4	20.7	20.7	0.00	N/A			
100.0	100.0	101.0	101.0	0.1	0.1	90.01	0.0	43.4	20.7	20.5	0.23	91.320			
200.0	200.0	201.0	201.0	0.3	0.3	90.01	0.0	43.4	20.7	20.1	0.68	30.642			
300.0	300.0	301.0	301.0	0.6	0.6	90.01	0.0	43.4	20.7	19.6	1.13	18.410			
366.3	366.3	367.3	367.3	0.7	0.7	90.01	0.0	43.4	20.7	19.3	1.42	14.556 CC			
400.0	400.0	401.0	401.0	0.8	0.8	90.01	0.0	43.4	20.7	19.2	1.58	13.159 ES			
500.0	500.0	500.7	500.7	1.0	1.0	91.38	-0.5	44.1	21.5	19.5	2.00	10.711			
600.0	600.0	600.3	600.3	1.2	1.2	94.93	-2.0	46.3	23.7	21.3	2.42	9.771			
700.0	700.0	700.0	699.9	1.5	1.4	99.54	-4.6	49.8	27.5	24.7	2.86	9.635			
800.0	800.0	799.2	798.9	1.7	1.6	104.12	-8.1	54.7	33.1	29.8	3.30	10.029			
900.0	900.0	898.3	897.6	1.9	1.9	66.22	-12.6	61.1	39.8	36.1	3.73	10.675			
1,000.0	999.8	997.0	995.9	2.1	2.1	74.82	-18.0	68.7	47.5	43.3	4.16	11.397			
1,100.0	1,099.5	1,095.2	1,093.5	2.4	2.4	84.25	-24.4	77.7	57.2	52.6	4.62	12.388			
1,200.0	1,198.7	1,192.8	1,190.3	2.6	2.7	93.26	-31.8	88.0	69.9	64.8	5.10	13.695			
1,300.0	1,297.5	1,289.6	1,286.1	2.9	3.0	101.16	-40.0	99.6	86.1	80.4	5.63	15.278			
1,400.0	1,395.6	1,385.8	1,380.9	3.2	3.3	107.74	-49.1	112.3	105.9	99.7	6.21	17.052			
1,500.0	1,493.3	1,482.6	1,476.4	3.6	3.7	113.30	-58.5	125.6	128.1	121.3	6.83	18.765			
1,600.0	1,591.0	1,579.5	1,571.9	3.9	4.0	117.27	-67.9	138.8	151.2	143.8	7.47	20.259			
1,700.0	1,688.7	1,676.3	1,667.3	4.3	4.4	120.18	-77.4	152.1	174.8	166.7	8.11	21.544			
1,800.0	1,786.4	1,773.1	1,762.8	4.7	4.7	122.40	-86.8	165.3	198.8	190.0	8.77	22.655			
1,900.0	1,884.1	1,870.0	1,858.3	5.2	5.1	124.15	-96.2	178.6	222.9	213.5	9.44	23.616			
2,000.0	1,981.8	1,966.8	1,953.7	5.6	5.5	125.55	-105.7	191.9	247.2	237.1	10.11	24.451			
2,100.0	2,079.5	2,063.7	2,049.2	6.0	5.8	126.70	-115.1	205.1	271.6	260.8	10.79	25.182			
2,200.0	2,177.2	2,160.5	2,144.6	6.4	6.2	127.66	-124.6	218.4	296.1	284.7	11.47	25.826			
2,300.0	2,274.9	2,257.4	2,240.1	6.9	6.6	128.48	-134.0	231.6	320.7	308.5	12.15	26.397			
2,400.0	2,372.6	2,354.2	2,335.6	7.3	7.0	129.18	-143.4	244.9	345.3	332.5	12.83	26.905			
2,500.0	2,470.3	2,451.0	2,431.0	7.8	7.3	129.78	-152.9	258.1	370.0	356.5	13.52	27.361			
2,600.0	2,568.0	2,547.9	2,526.5	8.2	7.7	130.31	-162.3	271.4	394.7	380.5	14.21	27.771			
2,700.0	2,665.7	2,644.7	2,622.0	8.6	8.1	130.78	-171.7	284.7	419.4	404.5	14.90	28.142			
2,800.0	2,763.4	2,741.6	2,717.4	9.1	8.5	131.20	-181.2	297.9	444.1	428.6	15.60	28.479			
2,900.0	2,861.1	2,838.4	2,812.9	9.5	8.8	131.57	-190.6	311.2	468.9	452.6	16.29	28.786			
3,000.0	2,958.7	2,935.2	2,908.4	10.0	9.2	131.90	-200.0	324.4	493.7	476.7	16.98	29.068			
3,100.0	3,056.4	3,032.1	3,003.8	10.4	9.6	132.21	-209.5	337.7	518.5	500.8	17.68	29.326			
3,200.0	3,154.1	3,128.9	3,099.3	10.9	10.0	132.48	-218.9	350.9	543.3	524.9	18.38	29.565			
3,300.0	3,251.8	3,225.8	3,194.8	11.3	10.4	132.73	-228.4	364.2	568.1	549.1	19.07	29.785			
3,400.0	3,349.5	3,322.6	3,290.2	11.8	10.7	132.96	-237.8	377.5	593.0	573.2	19.77	29.989			
3,500.0	3,447.2	3,419.4	3,385.7	12.2	11.1	133.18	-247.2	390.7	617.8	597.3	20.47	30.179			
3,600.0	3,544.9	3,516.3	3,481.1	12.7	11.5	133.37	-256.7	404.0	642.7	621.5	21.17	30.355			
3,700.0	3,642.6	3,613.1	3,576.6	13.1	11.9	133.55	-266.1	417.2	667.5	645.6	21.87	30.520			
3,800.0	3,740.3	3,710.0	3,672.1	13.6	12.3	133.72	-275.5	430.5	692.4	669.8	22.57	30.675			
3,900.0	3,838.0	3,806.8	3,767.5	14.0	12.6	133.88	-285.0	443.7	717.2	694.0	23.27	30.819			
4,000.0	3,935.7	3,903.7	3,863.0	14.5	13.0	134.02	-294.4	457.0	742.1	718.1	23.97	30.955			
4,100.0	4,033.4	4,000.5	3,958.5	15.0	13.4	134.16	-303.9	470.3	767.0	742.3	24.68	31.083			
4,200.0	4,131.1	4,097.3	4,053.9	15.4	13.8	134.29	-313.3	483.5	791.9	766.5	25.38	31.204			
4,300.0	4,228.8	4,194.2	4,149.4	15.9	14.2	134.41	-322.7	496.8	816.8	790.7	26.08	31.318			
4,400.0	4,326.5	4,291.0	4,244.9	16.3	14.6	134.52	-332.2	510.0	841.6	814.9	26.78	31.425			
4,500.0	4,424.2	4,387.9	4,340.3	16.8	14.9	134.62	-341.6	523.3	866.5	839.0	27.49	31.527			
4,600.0	4,521.9	4,484.7	4,435.8	17.2	15.3	134.72	-351.0	536.5	891.4	863.2	28.19	31.624			
4,700.0	4,619.6	4,581.5	4,531.2	17.7	15.7	134.82	-360.5	549.8	916.3	887.4	28.89	31.715			
4,800.0	4,717.2	4,678.4	4,626.7	18.1	16.1	134.91	-369.9	563.1	941.2	911.6	29.60	31.803			
4,900.0	4,814.9	4,775.2	4,722.2	18.6	16.5	134.99	-379.4	576.3	966.1	935.8	30.30	31.886			

COMPASS 2003.21 Build 46

Offset Design												Offset Site Error:		0.0 ft
Survey Program: 0-MWD												Offset Well Error:		0.0 ft
Reference		Offset		Semi Major Axis			Distance					Warning		
Measured Depth	Vertical Depth	Measured Depth	Vertical Depth	Reference	Offset	Highside Toolface	Offset Wellbore Centre		Between Centres	Between Ellipses	Minimum Separation			Separation Factor
(ft)	(ft)	(ft)	(ft)	(ft)	(ft)	(°)	+N/-S (ft)	+E/-W (ft)	(ft)	(ft)	(ft)			
5,000.0	4,912.6	4,872.1	4,817.6	19.1	16.8	135.08	-388.8	589.6	991.0	960.0	31.00	31.965		
5,100.0	5,010.3	4,968.9	4,913.1	19.5	17.2	135.15	-398.2	602.8	1,015.9	984.2	31.71	32.040		
5,200.0	5,108.0	5,065.7	5,008.6	20.0	17.6	135.23	-407.7	616.1	1,040.8	1,008.4	32.41	32.112		
5,300.0	5,205.7	5,162.6	5,104.0	20.4	18.0	135.30	-417.1	629.3	1,065.7	1,032.6	33.12	32.181		
5,400.0	5,303.4	5,259.4	5,199.5	20.9	18.4	135.36	-426.5	642.6	1,090.6	1,056.8	33.82	32.247		
5,500.0	5,401.1	5,356.3	5,295.0	21.3	18.8	135.43	-436.0	655.9	1,115.5	1,081.0	34.53	32.310		
5,600.0	5,498.8	5,453.1	5,390.4	21.8	19.1	135.49	-445.4	669.1	1,140.4	1,105.2	35.23	32.370		
5,700.0	5,596.5	5,550.0	5,485.9	22.2	19.5	135.55	-454.8	682.4	1,165.3	1,129.4	35.94	32.428		
5,800.0	5,694.2	5,646.8	5,581.4	22.7	19.9	135.60	-464.3	695.6	1,190.3	1,153.6	36.64	32.484		
5,900.0	5,791.9	5,743.6	5,676.8	23.2	20.3	135.66	-473.7	708.9	1,215.2	1,177.8	37.35	32.537		
6,000.0	5,889.6	5,840.5	5,772.3	23.6	20.7	135.71	-483.2	722.1	1,240.1	1,202.0	38.05	32.588		
6,100.0	5,987.3	5,937.3	5,867.7	24.1	21.1	135.76	-492.6	735.4	1,265.0	1,226.2	38.76	32.638		
6,200.0	6,085.3	6,034.5	5,963.5	24.5	21.4	136.09	-502.1	748.7	1,288.7	1,249.2	39.50	32.627		
6,300.0	6,184.0	6,132.1	6,059.8	24.8	21.8	136.27	-511.6	762.1	1,310.0	1,269.8	40.16	32.620		
6,400.0	6,283.2	6,244.1	6,170.2	25.0	22.2	136.30	-522.2	777.0	1,328.6	1,287.8	40.78	32.577		
6,500.0	6,382.7	6,379.1	6,304.1	25.2	22.5	136.26	-532.1	790.9	1,342.6	1,301.3	41.33	32.482		
6,600.0	6,482.5	6,515.5	6,440.1	25.4	22.8	136.24	-538.4	799.8	1,351.4	1,309.6	41.78	32.345		
6,700.0	6,582.5	6,652.8	6,577.3	25.5	23.0	136.23	-541.0	803.3	1,354.9	1,312.8	42.13	32.163		
6,800.0	6,682.5	6,759.0	6,683.5	25.6	23.1	-179.73	-541.0	803.4	1,355.0	1,314.6	40.41	33.533		
6,900.0	6,782.5	6,858.8	6,783.4	25.8	23.3	-89.66	-541.0	803.3	1,355.0	1,312.3	42.68	31.750		
7,000.0	6,882.0	6,957.9	6,881.9	25.8	23.3	-89.68	-541.0	794.4	1,355.0	1,312.3	42.76	31.689		
7,100.0	6,979.2	7,056.9	6,978.3	25.7	23.2	-89.70	-541.0	772.1	1,355.0	1,312.4	42.61	31.802		
7,200.0	7,072.3	7,156.1	7,070.9	25.6	23.1	-89.73	-541.1	736.6	1,355.0	1,312.7	42.27	32.052		
7,300.0	7,159.4	7,255.4	7,157.7	25.3	22.9	-89.76	-541.1	688.7	1,354.9	1,313.1	41.84	32.381		
7,400.0	7,238.8	7,354.7	7,237.1	25.1	22.7	-89.80	-541.1	629.1	1,354.9	1,313.5	41.43	32.707		
7,500.0	7,309.1	7,454.2	7,307.6	24.8	22.5	-89.84	-541.2	559.1	1,354.9	1,313.7	41.17	32.910		
7,600.0	7,368.7	7,553.8	7,367.8	24.5	22.3	-89.88	-541.3	479.8	1,354.8	1,313.6	41.23	32.858		
7,700.0	7,416.7	7,653.5	7,416.5	24.3	22.3	-89.93	-541.3	392.8	1,354.8	1,313.0	41.77	32.435		
7,800.0	7,451.9	7,753.4	7,452.7	24.1	22.4	-89.98	-541.4	299.8	1,354.7	1,311.8	42.88	31.593		
7,900.0	7,473.8	7,853.5	7,475.7	24.2	22.8	-90.03	-541.5	202.5	1,354.6	1,310.0	44.59	30.377		
8,000.0	7,482.0	7,953.7	7,484.8	24.5	23.6	-90.08	-541.5	102.9	1,354.6	1,307.7	46.85	28.912		
8,100.0	7,482.0	8,053.7	7,485.0	25.3	24.8	-90.08	-541.6	2.8	1,354.5	1,304.9	49.61	27.302		
8,200.0	7,482.0	8,153.7	7,485.0	26.7	26.3	-90.08	-541.7	-97.2	1,354.5	1,301.7	52.80	25.654		
8,300.0	7,482.0	8,253.7	7,485.0	28.4	28.0	-90.08	-541.8	-197.2	1,354.4	1,298.0	56.36	24.032		
8,400.0	7,482.0	8,353.7	7,485.0	30.3	29.9	-90.08	-541.9	-297.2	1,354.3	1,294.1	60.23	22.484		
8,500.0	7,482.0	8,453.7	7,485.0	32.4	32.0	-90.08	-541.9	-397.2	1,354.3	1,289.9	64.37	21.040		
8,600.0	7,482.0	8,553.7	7,485.0	34.6	34.2	-90.08	-542.0	-497.2	1,354.2	1,285.5	68.71	19.710		
8,700.0	7,482.0	8,653.7	7,485.0	36.8	36.5	-90.08	-542.1	-597.2	1,354.2	1,280.9	73.22	18.494		
8,800.0	7,482.0	8,753.7	7,485.0	39.2	38.8	-90.08	-542.2	-697.2	1,354.1	1,276.2	77.88	17.388		
8,900.0	7,482.0	8,853.7	7,485.0	41.6	41.2	-90.08	-542.2	-797.2	1,354.0	1,271.4	82.65	16.383		
9,000.0	7,482.0	8,953.7	7,485.0	44.0	43.7	-90.08	-542.3	-897.2	1,354.0	1,266.5	87.53	15.470		
9,100.0	7,482.0	9,053.7	7,485.0	46.5	46.2	-90.08	-542.4	-997.2	1,353.9	1,261.4	92.48	14.640		
9,200.0	7,482.0	9,153.7	7,485.0	49.0	48.7	-90.08	-542.5	-1,097.2	1,353.9	1,256.4	97.51	13.884		
9,300.0	7,482.0	9,253.7	7,485.0	51.5	51.3	-90.08	-542.5	-1,197.2	1,353.8	1,251.2	102.60	13.195		
9,400.0	7,482.0	9,353.7	7,485.0	54.1	53.8	-90.08	-542.6	-1,297.2	1,353.7	1,246.0	107.74	12.565		
9,500.0	7,482.0	9,453.7	7,485.0	56.7	56.4	-90.08	-542.7	-1,397.2	1,353.7	1,240.8	112.92	11.988		
9,600.0	7,482.0	9,553.7	7,485.0	59.3	59.1	-90.08	-542.8	-1,497.2	1,353.6	1,235.5	118.14	11.457		
9,700.0	7,482.0	9,653.7	7,485.0	61.9	61.7	-90.08	-542.8	-1,597.2	1,353.6	1,230.2	123.40	10.969		
9,800.0	7,482.0	9,753.7	7,485.0	64.6	64.3	-90.08	-542.9	-1,697.2	1,353.5	1,224.8	128.69	10.518		
9,900.0	7,482.0	9,853.7	7,485.0	67.2	67.0	-90.08	-543.0	-1,797.2	1,353.4	1,219.5	134.00	10.100		
10,000.0	7,482.0	9,953.7	7,485.0	69.9	69.7	-90.08	-543.1	-1,897.2	1,353.4	1,214.1	139.34	9.713		

Offset Design												Offset Site Error:	
Survey Program: 0-MWD												Offset Well Error:	
Reference				Offset		Semi Major Axis			Distance				Warning
Measured Depth	Vertical Depth	Measured Depth	Vertical Depth	Reference	Offset	Highside Toolface	Offset Wellbore Centre	Between Centres	Between Ellipses	Minimum Separation	Separation Factor		
(ft)	(ft)	(ft)	(ft)	(ft)	(ft)	(°)	+N/-S (ft)	+E/-W (ft)	(ft)	(ft)	(ft)		
10,100.0	7,482.0	10,053.7	7,485.0	72.6	72.4	-90.08	-543.1	-1,997.2	1,353.3	1,208.6	144.69	9.353	
10,200.0	7,482.0	10,153.7	7,485.0	75.3	75.1	-90.08	-543.2	-2,097.2	1,353.3	1,203.2	150.07	9.018	
10,300.0	7,482.0	10,253.7	7,485.0	77.9	77.8	-90.08	-543.3	-2,197.2	1,353.2	1,197.8	155.46	8.705	
10,400.0	7,482.0	10,353.7	7,485.0	80.6	80.5	-90.08	-543.4	-2,297.2	1,353.2	1,192.3	160.86	8.412	
10,500.0	7,482.0	10,453.7	7,485.0	83.3	83.2	-90.08	-543.4	-2,397.2	1,353.1	1,186.8	166.28	8.137	
10,600.0	7,482.0	10,553.7	7,485.0	86.1	85.9	-90.08	-543.5	-2,497.2	1,353.0	1,181.3	171.71	7.880	
10,700.0	7,482.0	10,653.7	7,485.0	88.8	88.6	-90.08	-543.6	-2,597.2	1,353.0	1,175.8	177.16	7.637	
10,800.0	7,482.0	10,753.7	7,485.0	91.5	91.3	-90.08	-543.7	-2,697.2	1,352.9	1,170.3	182.61	7.409	
10,900.0	7,482.0	10,853.7	7,485.0	94.2	94.1	-90.08	-543.7	-2,797.2	1,352.9	1,164.8	188.07	7.193	
11,000.0	7,482.0	10,953.7	7,485.0	97.0	96.8	-90.08	-543.8	-2,897.2	1,352.8	1,159.3	193.54	6.990	
11,100.0	7,482.0	11,053.7	7,485.0	99.7	99.6	-90.08	-543.9	-2,997.2	1,352.7	1,153.7	199.02	6.797	
11,200.0	7,482.0	11,153.7	7,485.0	102.4	102.3	-90.08	-544.0	-3,097.2	1,352.7	1,148.2	204.50	6.614	
11,300.0	7,482.0	11,253.7	7,485.0	105.2	105.0	-90.08	-544.0	-3,197.2	1,352.6	1,142.6	209.99	6.441	
11,400.0	7,482.0	11,353.7	7,485.0	107.9	107.8	-90.08	-544.1	-3,297.2	1,352.6	1,137.1	215.49	6.277	
11,500.0	7,482.0	11,453.7	7,485.0	110.7	110.5	-90.08	-544.2	-3,397.2	1,352.5	1,131.5	220.99	6.120	
11,600.0	7,482.0	11,553.7	7,485.0	113.4	113.3	-90.08	-544.3	-3,497.2	1,352.4	1,125.9	226.50	5.971	
11,700.0	7,482.0	11,653.7	7,485.0	116.2	116.1	-90.08	-544.4	-3,597.2	1,352.4	1,120.4	232.02	5.829	
11,800.0	7,482.0	11,753.7	7,485.0	118.9	118.8	-90.08	-544.4	-3,697.2	1,352.3	1,114.8	237.53	5.693	
11,900.0	7,482.0	11,853.7	7,485.0	121.7	121.6	-90.08	-544.5	-3,797.2	1,352.3	1,109.2	243.05	5.564	
12,000.0	7,482.0	11,953.7	7,485.0	124.4	124.3	-90.08	-544.6	-3,897.2	1,352.2	1,103.6	248.58	5.440	
12,022.3	7,482.0	11,976.0	7,485.0	125.1	125.0	-90.08	-544.6	-3,919.5	1,352.2	1,102.4	249.81	5.413 SF	

SRC Eberle 14-32CHZM Pad Sec.32-T1N-R66W - SRC Eberle B-32CHZ - Wellbore #1 - Plan #1 (12-26)													Offset Site Error:	0.0 ft
Survey Program: 0-MWD													Offset Well Error:	0.0 ft
Reference		Offset		Semi Major Axis			Distance							Warning
Measured Depth (ft)	Vertical Depth (ft)	Measured Depth (ft)	Vertical Depth (ft)	Reference (ft)	Offset (ft)	Highside Toolface (°)	Offset Wellbore Centre +N-S (ft)	+E-W (ft)	Between Centres (ft)	Between Ellipses (ft)	Minimum Separation (ft)	Separation Factor		
0.0	0.0	0.0	0.0	0.0	0.0	-90.03	0.0	-22.7	45.4					
100.0	100.0	98.0	98.0	0.1	0.1	-90.03	0.0	-22.7	45.4	45.2	0.22	203.951		
200.0	200.0	198.0	198.0	0.3	0.3	-90.03	0.0	-22.7	45.4	44.7	0.67	67.757		
300.0	300.0	298.0	298.0	0.6	0.6	-90.03	0.0	-22.7	45.4	44.3	1.12	40.545		
400.0	400.0	398.0	398.0	0.8	0.8	-90.03	0.0	-22.7	45.4	43.8	1.57	28.928		
500.0	500.0	498.0	498.0	1.0	1.0	-90.03	0.0	-22.7	45.4	43.4	2.02	22.485		
600.0	600.0	598.0	598.0	1.2	1.2	-90.03	0.0	-22.7	45.4	42.9	2.47	18.389		
700.0	700.0	698.0	698.0	1.5	1.5	-90.03	0.0	-22.7	45.4	42.5	2.92	15.556		
800.0	800.0	798.0	798.0	1.7	1.7	-90.03	0.0	-22.7	45.4	42.0	3.37	13.479 CC, ES		
900.0	900.0	898.0	898.0	1.9	1.9	-135.59	0.0	-22.7	46.6	42.8	3.81	12.228		
1,000.0	999.8	997.8	997.8	2.1	2.1	-139.70	0.0	-22.7	50.5	46.2	4.25	11.869		
1,100.0	1,099.5	1,097.5	1,097.5	2.4	2.4	-145.24	0.0	-22.7	57.4	52.7	4.70	12.229		
1,200.0	1,198.7	1,196.7	1,196.7	2.6	2.6	-151.01	0.0	-22.7	67.8	62.7	5.14	13.201		
1,300.0	1,297.5	1,296.6	1,296.6	2.9	2.8	-156.60	-0.2	-21.9	81.2	75.7	5.56	14.614		
1,400.0	1,395.6	1,396.1	1,396.1	3.2	3.0	-161.91	-0.8	-19.4	97.2	91.2	5.96	16.305		
1,500.0	1,493.3	1,495.5	1,495.4	3.6	3.2	-166.68	-1.9	-15.3	114.7	108.3	6.38	17.969		
1,600.0	1,591.0	1,595.1	1,594.8	3.9	3.4	-170.76	-3.3	-9.5	131.7	124.9	6.82	19.311		
1,700.0	1,688.7	1,694.8	1,694.2	4.3	3.6	-174.44	-5.1	-2.0	148.3	141.0	7.28	20.380		
1,800.0	1,786.4	1,794.6	1,793.6	4.7	3.8	-177.89	-7.4	7.2	164.3	156.6	7.75	21.215		
1,900.0	1,884.1	1,894.4	1,892.7	5.2	4.1	178.81	-10.0	18.1	180.0	171.8	8.24	21.848		
2,000.0	1,981.8	1,994.2	1,991.7	5.6	4.3	175.59	-13.1	30.7	195.4	186.7	8.76	22.306		
2,100.0	2,079.5	2,093.9	2,090.3	6.0	4.6	172.41	-16.6	44.9	210.7	201.4	9.32	22.613		
2,200.0	2,177.2	2,193.4	2,188.5	6.4	4.9	169.26	-20.5	60.7	225.9	216.0	9.91	22.789		
2,300.0	2,274.9	2,291.6	2,285.1	6.9	5.2	166.35	-24.5	77.2	241.4	230.8	10.54	22.908		
2,400.0	2,372.6	2,389.6	2,381.7	7.3	5.6	163.78	-28.6	93.7	257.4	246.2	11.19	23.011		
2,500.0	2,470.3	2,487.7	2,478.3	7.8	5.9	161.52	-32.6	110.2	273.9	262.1	11.86	23.105		
2,600.0	2,568.0	2,585.8	2,574.9	8.2	6.2	159.52	-36.7	126.7	290.8	278.2	12.54	23.189		
2,700.0	2,665.7	2,683.9	2,671.5	8.6	6.6	157.73	-40.7	143.2	307.9	294.7	13.24	23.265		
2,800.0	2,763.4	2,782.0	2,768.1	9.1	6.9	156.14	-44.8	159.7	325.4	311.4	13.94	23.335		
2,900.0	2,861.1	2,880.0	2,864.7	9.5	7.3	154.70	-48.8	176.2	343.0	328.4	14.66	23.400		
3,000.0	2,958.7	2,978.1	2,961.3	10.0	7.7	153.41	-52.8	192.7	360.9	345.5	15.38	23.460		
3,100.0	3,056.4	3,076.2	3,057.9	10.4	8.0	152.24	-56.9	209.2	378.9	362.8	16.11	23.516		
3,200.0	3,154.1	3,174.3	3,154.5	10.9	8.4	151.17	-60.9	225.7	397.0	380.2	16.85	23.568		
3,300.0	3,251.8	3,272.4	3,251.1	11.3	8.7	150.20	-65.0	242.1	415.3	397.7	17.58	23.618		
3,400.0	3,349.5	3,370.5	3,347.7	11.8	9.1	149.30	-69.0	258.6	433.7	415.3	18.33	23.664		
3,500.0	3,447.2	3,468.5	3,444.3	12.2	9.5	148.49	-73.1	275.1	452.1	433.1	19.07	23.709		
3,600.0	3,544.9	3,566.6	3,540.9	12.7	9.9	147.73	-77.1	291.6	470.7	450.9	19.82	23.751		
3,700.0	3,642.6	3,664.7	3,637.5	13.1	10.2	147.03	-81.1	308.1	489.3	468.7	20.57	23.791		
3,800.0	3,740.3	3,762.8	3,734.1	13.6	10.6	146.39	-85.2	324.6	508.0	486.7	21.32	23.829		
3,900.0	3,838.0	3,860.9	3,830.7	14.0	11.0	145.79	-89.2	341.1	526.8	504.7	22.07	23.866		
4,000.0	3,935.7	3,958.9	3,927.3	14.5	11.4	145.23	-93.3	357.6	545.6	522.7	22.83	23.901		
4,100.0	4,033.4	4,057.0	4,023.9	15.0	11.8	144.71	-97.3	374.1	564.4	540.8	23.58	23.934		
4,200.0	4,131.1	4,155.1	4,120.5	15.4	12.1	144.22	-101.4	390.6	583.3	559.0	24.34	23.966		
4,300.0	4,228.8	4,253.2	4,217.1	15.9	12.5	143.76	-105.4	407.0	602.2	577.1	25.10	23.997		
4,400.0	4,326.5	4,351.3	4,313.7	16.3	12.9	143.33	-109.4	423.5	621.2	595.3	25.85	24.026		
4,500.0	4,424.2	4,449.4	4,410.3	16.8	13.3	142.92	-113.5	440.0	640.2	613.6	26.61	24.054		
4,600.0	4,521.9	4,547.4	4,506.9	17.2	13.7	142.54	-117.5	456.5	659.2	631.8	27.37	24.081		
4,700.0	4,619.6	4,645.5	4,603.5	17.7	14.1	142.18	-121.6	473.0	678.2	650.1	28.13	24.107		
4,800.0	4,717.2	4,743.6	4,700.1	18.1	14.4	141.84	-125.6	489.5	697.3	668.4	28.90	24.132		
4,900.0	4,814.9	4,841.7	4,796.7	18.6	14.8	141.52	-129.7	506.0	716.4	686.8	29.66	24.156		
5,000.0	4,912.6	4,939.8	4,893.3	19.1	15.2	141.21	-133.7	522.5	735.5	705.1	30.42	24.180		

COMPASS 2003.21 Build 46

Company:	Synergy Resources	Local Co-ordinate Reference:	Well SRC Eberle 13-32NHZ
Project:	SEC.32-T1N-R66W	TVD Reference:	WELL @ 5044.0ft (RKB - 12')
Reference Site:	SRC Eberle 14-32CHZM Pad Sec.32-T1N-R66W	MD Reference:	WELL @ 5044.0ft (RKB - 12')
Site Error:	0.0ft	North Reference:	True
Reference Well:	SRC Eberle 13-32NHZ	Survey Calculation Method:	Minimum Curvature
Well Error:	0.0ft	Output errors are at	2.00 sigma
Reference Wellbore	Wellbore #1	Database:	Landmark
Reference Design:	Plan #1 (12-26-13)	Offset TVD Reference:	Offset Datum

Offset Design SRC Eberle 14-32CHZM Pad Sec.32-T1N-R66W - SRC Eberle B-32CHZ - Wellbore #1 - Plan #1 (12-26)													Offset Site Error:	0.0 ft
Survey Program: 0-MWD													Offset Well Error:	0.0 ft
Measured Depth (ft)	Vertical Depth (ft)	Measured Depth (ft)	Vertical Depth (ft)	Reference	Offset	Semi Major Axis Highside Toolface (°)	Offset Wellbore Centre +N/-S (ft)	+E/-W (ft)	Between Centres (ft)	Between Ellipses (ft)	Minimum Separation (ft)	Separation Factor	Warning	
5,100.0	5,010.3	5,037.8	4,989.9	19.5	15.6	140.92	-137.7	539.0	754.7	723.5	31.18	24.202		
5,200.0	5,108.0	5,135.9	5,086.5	20.0	16.0	140.65	-141.8	555.5	773.8	741.9	31.95	24.223		
5,300.0	5,205.7	5,234.0	5,183.1	20.4	16.4	140.39	-145.8	572.0	793.0	760.3	32.71	24.244		
5,400.0	5,303.4	5,332.1	5,279.7	20.9	16.8	140.14	-149.9	588.4	812.2	778.7	33.47	24.264		
5,500.0	5,401.1	5,430.2	5,376.3	21.3	17.1	139.90	-153.9	604.9	831.4	797.1	34.24	24.284		
5,600.0	5,498.8	5,528.3	5,472.9	21.8	17.5	139.67	-158.0	621.4	850.6	815.6	35.00	24.302		
5,700.0	5,596.5	5,626.3	5,569.5	22.2	17.9	139.45	-162.0	637.9	869.8	834.1	35.77	24.320		
5,800.0	5,694.2	5,724.4	5,666.1	22.7	18.3	139.24	-166.0	654.4	889.1	852.5	36.53	24.338		
5,900.0	5,791.9	5,822.5	5,762.7	23.2	18.7	139.05	-170.1	670.9	908.3	871.0	37.30	24.355		
6,000.0	5,889.6	5,920.6	5,859.3	23.6	19.1	138.85	-174.1	687.4	927.6	889.5	38.06	24.371		
6,100.0	5,987.3	6,018.7	5,955.9	24.1	19.5	138.67	-178.2	703.9	946.8	908.0	38.83	24.387		
6,200.0	6,085.3	6,116.9	6,052.7	24.5	19.9	138.67	-182.2	720.4	964.9	925.3	39.60	24.366		
6,300.0	6,184.0	6,215.5	6,149.8	24.8	20.3	138.50	-186.3	737.0	980.3	940.0	40.31	24.322		
6,400.0	6,283.2	6,314.3	6,247.1	25.0	20.7	138.18	-190.4	753.6	993.3	952.3	40.99	24.234		
6,500.0	6,382.7	6,416.4	6,347.8	25.2	21.0	137.70	-194.5	770.4	1,003.6	962.0	41.62	24.116		
6,600.0	6,482.5	6,523.7	6,454.0	25.4	21.3	137.21	-198.0	784.9	1,010.9	968.8	42.12	24.000		
6,700.0	6,582.5	6,631.7	6,561.5	25.5	21.5	136.75	-200.7	795.6	1,014.9	972.4	42.53	23.860		
6,800.0	6,682.5	6,740.3	6,669.8	25.6	21.7	-179.59	-202.3	802.4	1,016.4	978.7	37.68	26.972		
6,900.0	6,782.5	6,849.3	6,778.7	25.8	21.9	-89.68	-203.0	805.2	1,017.0	973.8	43.24	23.521		
7,000.0	6,882.0	6,950.6	6,880.0	25.8	22.1	-90.21	-203.0	805.3	1,017.0	973.5	43.48	23.392		
7,100.0	6,979.2	7,049.7	6,979.1	25.7	22.2	-91.36	-203.0	803.3	1,017.3	973.7	43.63	23.317		
7,200.0	7,072.3	7,152.4	7,080.6	25.6	22.2	-92.60	-203.1	788.4	1,018.1	974.6	43.55	23.379		
7,300.0	7,159.4	7,258.7	7,182.3	25.3	22.0	-93.80	-203.1	757.8	1,019.4	976.1	43.26	23.564		
7,400.0	7,238.8	7,368.8	7,281.7	25.1	21.8	-94.96	-203.1	710.6	1,021.0	978.1	42.84	23.830		
7,500.0	7,309.1	7,482.9	7,375.8	24.8	21.6	-96.02	-203.2	646.3	1,022.8	980.4	42.43	24.104		
7,600.0	7,368.7	7,600.9	7,461.1	24.5	21.4	-96.98	-203.3	565.0	1,024.7	982.5	42.21	24.275		
7,700.0	7,416.7	7,722.6	7,533.8	24.3	21.4	-97.79	-203.4	467.6	1,026.5	984.1	42.43	24.196		
7,800.0	7,451.9	7,847.5	7,590.3	24.1	21.8	-98.42	-203.5	356.4	1,028.1	984.8	43.28	23.756		
7,900.0	7,473.8	7,974.8	7,627.1	24.2	22.6	-98.85	-203.6	234.7	1,029.1	984.2	44.92	22.912		
8,000.0	7,482.0	8,103.6	7,641.8	24.5	23.9	-99.04	-203.8	106.9	1,029.6	982.3	47.30	21.766		
8,100.0	7,482.0	8,207.6	7,642.0	25.3	25.2	-99.05	-203.9	2.9	1,029.6	979.6	50.01	20.589		
8,200.0	7,482.0	8,307.6	7,642.0	26.7	26.7	-99.05	-204.0	-97.1	1,029.6	976.5	53.10	19.388		
8,300.0	7,482.0	8,407.6	7,642.0	28.4	28.5	-99.05	-204.1	-197.1	1,029.6	973.0	56.58	18.197		
8,400.0	7,482.0	8,507.6	7,642.0	30.3	30.4	-99.05	-204.2	-297.1	1,029.5	969.2	60.36	17.056		
8,500.0	7,482.0	8,607.6	7,642.0	32.4	32.4	-99.05	-204.3	-397.1	1,029.5	965.1	64.40	15.986		
8,600.0	7,482.0	8,707.6	7,642.0	34.6	34.6	-99.05	-204.4	-497.1	1,029.5	960.8	68.65	14.996		
8,700.0	7,482.0	8,807.6	7,642.0	36.8	36.8	-99.05	-204.5	-597.1	1,029.4	956.4	73.07	14.088		
8,800.0	7,482.0	8,907.6	7,642.0	39.2	39.1	-99.05	-204.6	-697.1	1,029.4	951.8	77.64	13.259		
8,900.0	7,482.0	9,007.6	7,642.0	41.6	41.5	-99.05	-204.7	-797.1	1,029.4	947.1	82.33	12.504		
9,000.0	7,482.0	9,107.6	7,642.0	44.0	43.9	-99.05	-204.8	-897.1	1,029.3	942.2	87.11	11.816		
9,100.0	7,482.0	9,207.6	7,642.0	46.5	46.4	-99.06	-204.9	-997.1	1,029.3	937.3	91.99	11.190		
9,200.0	7,482.0	9,307.6	7,642.0	49.0	48.9	-99.06	-205.1	-1,097.1	1,029.3	932.4	96.93	10.619		
9,300.0	7,482.0	9,407.6	7,642.0	51.5	51.4	-99.06	-205.2	-1,197.1	1,029.3	927.3	101.94	10.097		
9,400.0	7,482.0	9,507.6	7,642.0	54.1	53.9	-99.06	-205.3	-1,297.1	1,029.2	922.2	107.00	9.619		
9,500.0	7,482.0	9,607.6	7,642.0	56.7	56.5	-99.06	-205.4	-1,397.1	1,029.2	917.1	112.11	9.181		
9,600.0	7,482.0	9,707.6	7,642.0	59.3	59.1	-99.06	-205.5	-1,497.1	1,029.2	911.9	117.25	8.777		
9,700.0	7,482.0	9,807.6	7,642.0	61.9	61.8	-99.06	-205.6	-1,597.1	1,029.1	906.7	122.43	8.406		
9,800.0	7,482.0	9,907.6	7,642.0	64.6	64.4	-99.06	-205.7	-1,697.1	1,029.1	901.5	127.64	8.062		
9,900.0	7,482.0	10,007.6	7,642.0	67.2	67.0	-99.06	-205.8	-1,797.1	1,029.1	896.2	132.88	7.744		
10,000.0	7,482.0	10,107.6	7,642.0	69.9	69.7	-99.06	-205.9	-1,897.1	1,029.1	890.9	138.14	7.449		
10,100.0	7,482.0	10,207.6	7,642.0	72.6	72.4	-99.06	-206.0	-1,997.1	1,029.0	885.6	143.43	7.175		

CC - Min centre to center distance or convergent point, SF - min separation factor, ES - min ellipse separation

Company:	Synergy Resources	Local Co-ordinate Reference:	Well SRC Eberle 13-32NHZ
Project:	SEC.32-T1N-R66W	TVD Reference:	WELL @ 5044.0ft (RKB - 12')
Reference Site:	SRC Eberle 14-32CHZM Pad Sec.32-T1N-R66W	MD Reference:	WELL @ 5044.0ft (RKB - 12')
Site Error:	0.0ft	North Reference:	True
Reference Well:	SRC Eberle 13-32NHZ	Survey Calculation Method:	Minimum Curvature
Well Error:	0.0ft	Output errors are at	2.00 sigma
Reference Wellbore	Wellbore #1	Database:	Landmark
Reference Design:	Plan #1 (12-26-13)	Offset TVD Reference:	Offset Datum

Offset Design										SRC Eberle 14-32CHZM Pad Sec.32-T1N-R66W - SRC Eberle B-32CHZ - Wellbore #1 - Plan #1 (12-26			Offset Site Error:		0.0 ft	
Survey Program: 0-MWD													Offset Well Error:		0.0 ft	
Reference		Offset		Semi Major Axis			Distance									
Measured Depth	Vertical Depth	Measured Depth	Vertical Depth	Reference	Offset	Highside Toolface	Offset Wellbore Centre		Between Centres	Between Ellipses	Minimum Separation	Separation Factor	Warning			
(ft)	(ft)	(ft)	(ft)	(ft)	(ft)	(°)	+N/-S (ft)	+E/-W (ft)	(ft)	(ft)	(ft)					
10,200.0	7,482.0	10,307.6	7,642.0	75.3	75.1	-99.06	-206.1	-2,097.1	1,029.0	880.3	148.73	6.919				
10,300.0	7,482.0	10,407.6	7,642.0	77.9	77.7	-99.06	-206.2	-2,197.1	1,029.0	874.9	154.05	6.680				
10,400.0	7,482.0	10,507.6	7,642.0	80.6	80.4	-99.06	-206.3	-2,297.1	1,028.9	869.6	159.38	6.456				
10,500.0	7,482.0	10,607.6	7,642.0	83.3	83.1	-99.06	-206.4	-2,397.1	1,028.9	864.2	164.73	6.246				
10,600.0	7,482.0	10,707.6	7,642.0	86.1	85.9	-99.06	-206.5	-2,497.1	1,028.9	858.8	170.09	6.049				
10,700.0	7,482.0	10,807.6	7,642.0	88.8	88.6	-99.06	-206.6	-2,597.1	1,028.9	853.4	175.46	5.864				
10,800.0	7,482.0	10,907.6	7,642.0	91.5	91.3	-99.06	-206.7	-2,697.1	1,028.8	848.0	180.85	5.689				
10,900.0	7,482.0	11,007.6	7,642.0	94.2	94.0	-99.06	-206.9	-2,797.1	1,028.8	842.6	186.24	5.524				
11,000.0	7,482.0	11,107.6	7,642.0	97.0	96.8	-99.06	-207.0	-2,897.1	1,028.8	837.1	191.64	5.368				
11,100.0	7,482.0	11,207.6	7,642.0	99.7	99.5	-99.06	-207.1	-2,997.1	1,028.7	831.7	197.05	5.221				
11,200.0	7,482.0	11,307.6	7,642.0	102.4	102.2	-99.06	-207.2	-3,097.1	1,028.7	826.2	202.47	5.081				
11,300.0	7,482.0	11,407.6	7,642.0	105.2	105.0	-99.06	-207.3	-3,197.1	1,028.7	820.8	207.89	4.948				
11,400.0	7,482.0	11,507.6	7,642.0	107.9	107.7	-99.06	-207.4	-3,297.1	1,028.7	815.3	213.32	4.822				
11,500.0	7,482.0	11,607.6	7,642.0	110.7	110.5	-99.06	-207.5	-3,397.1	1,028.6	809.9	218.75	4.702				
11,600.0	7,482.0	11,707.6	7,642.0	113.4	113.2	-99.06	-207.6	-3,497.1	1,028.6	804.4	224.19	4.588				
11,700.0	7,482.0	11,807.6	7,642.0	116.2	116.0	-99.06	-207.7	-3,597.1	1,028.6	798.9	229.64	4.479				
11,800.0	7,482.0	11,907.6	7,642.0	118.9	118.7	-99.06	-207.8	-3,697.1	1,028.5	793.4	235.09	4.375				
11,900.0	7,482.0	12,007.6	7,642.0	121.7	121.5	-99.06	-207.9	-3,797.1	1,028.5	788.0	240.54	4.276				
12,000.0	7,482.0	12,107.6	7,642.0	124.4	124.2	-99.06	-208.0	-3,897.1	1,028.5	782.5	246.00	4.181				
12,022.3	7,482.0	12,129.9	7,642.0	125.1	124.9	-99.06	-208.0	-3,919.4	1,028.5	781.3	247.22	4.160 SF				

Company:	Synergy Resources	Local Co-ordinate Reference:	Well SRC Eberle 13-32NHZ
Project:	SEC.32-T1N-R66W	TVD Reference:	WELL @ 5044.0ft (RKB - 12')
Reference Site:	SRC Eberle 14-32CHZM Pad Sec.32-T1N-R66W	MD Reference:	WELL @ 5044.0ft (RKB - 12')
Site Error:	0.0ft	North Reference:	True
Reference Well:	SRC Eberle 13-32NHZ	Survey Calculation Method:	Minimum Curvature
Well Error:	0.0ft	Output errors are at	2.00 sigma
Reference Wellbore	Wellbore #1	Database:	Landmark
Reference Design:	Plan #1 (12-26-13)	Offset TVD Reference:	Offset Datum

SRC Eberle 14-32CHZM Pad Sec.32-T1N-R66W - SRC Eberle B-32NHZ - Wellbore #1 - Plan #1 (12-26)													Offset Site Error:	0.0 ft
Survey Program: 0-MWD													Offset Well Error:	0.0 ft
Reference		Offset		Semi Major Axis			Distance							Warning
Measured Depth	Vertical Depth	Measured Depth	Vertical Depth	Reference	Offset	Highside Toolface	Offset Wellbore Centre		Between Centres	Between Ellipses	Minimum Separation	Separation Factor		
Depth (ft)	Depth (ft)	Depth (ft)	Depth (ft)	(ft)	(ft)	(°)	+N/-S (ft)	+E/-W (ft)	(ft)	(ft)	(ft)			
0.0	0.0	0.0	0.0	0.0	0.0	-89.98	0.0	-45.4	68.1					
100.0	100.0	97.0	97.0	0.1	0.1	-89.98	0.0	-45.4	68.1	67.9	0.22	307.477		
200.0	200.0	197.0	197.0	0.3	0.3	-89.98	0.0	-45.4	68.1	67.4	0.67	101.978		
300.0	300.0	297.0	297.0	0.6	0.6	-89.98	0.0	-45.4	68.1	67.0	1.12	60.940		
400.0	400.0	397.0	397.0	0.8	0.8	-89.98	0.0	-45.4	68.1	66.5	1.57	43.454		
500.0	500.0	497.0	497.0	1.0	1.0	-89.98	0.0	-45.4	68.1	66.1	2.02	33.765		
600.0	600.0	597.0	597.0	1.2	1.2	-89.98	0.0	-45.4	68.1	65.6	2.47	27.609		
700.0	700.0	697.0	697.0	1.5	1.5	-89.98	0.0	-45.4	68.1	65.2	2.92	23.352		
800.0	800.0	797.0	797.0	1.7	1.7	-89.98	0.0	-45.4	68.1	64.7	3.36	20.232 CC, ES		
900.0	900.0	897.0	897.0	1.9	1.9	-135.03	0.0	-45.4	69.3	65.5	3.81	18.189		
1,000.0	999.8	996.8	996.8	2.1	2.1	-137.88	0.0	-45.4	73.1	68.8	4.25	17.194		
1,100.0	1,099.5	1,096.5	1,096.5	2.4	2.4	-141.99	0.0	-45.4	79.8	75.1	4.69	16.997		
1,200.0	1,198.7	1,195.7	1,195.7	2.6	2.6	-146.67	0.0	-45.4	89.7	84.6	5.14	17.465		
1,300.0	1,297.5	1,294.5	1,294.5	2.9	2.8	-151.30	0.0	-45.4	103.2	97.6	5.58	18.495		
1,400.0	1,395.6	1,392.6	1,392.6	3.2	3.0	-155.51	0.0	-45.4	120.3	114.3	6.02	19.994		
1,500.0	1,493.3	1,492.5	1,492.5	3.6	3.2	-159.25	0.1	-44.6	139.3	132.9	6.46	21.562		
1,600.0	1,591.0	1,593.1	1,593.0	3.9	3.4	-162.33	0.5	-42.2	157.2	150.3	6.90	22.775		
1,700.0	1,688.7	1,694.1	1,694.0	4.3	3.6	-165.00	1.2	-37.9	173.8	166.5	7.35	23.651		
1,800.0	1,786.4	1,795.6	1,795.3	4.7	3.9	-167.42	2.2	-31.9	189.2	181.4	7.80	24.239		
1,900.0	1,884.1	1,897.5	1,896.9	5.2	4.1	-169.70	3.4	-24.1	203.2	194.9	8.26	24.583		
2,000.0	1,981.8	1,999.7	1,998.6	5.6	4.3	-171.92	5.0	-14.4	215.9	207.2	8.73	24.720		
2,100.0	2,079.5	2,102.1	2,100.4	6.0	4.6	-174.12	6.8	-3.0	227.4	218.2	9.21	24.677		
2,200.0	2,177.2	2,204.7	2,202.1	6.4	4.9	-176.34	8.9	10.3	237.7	227.9	9.71	24.478		
2,300.0	2,274.9	2,307.5	2,303.7	6.9	5.1	-178.62	11.3	25.4	246.8	236.6	10.22	24.142		
2,400.0	2,372.6	2,410.3	2,405.1	7.3	5.4	179.01	14.0	42.3	254.8	244.1	10.76	23.687		
2,500.0	2,470.3	2,513.1	2,506.1	7.8	5.8	176.54	17.0	61.0	261.9	250.5	11.32	23.127		
2,600.0	2,568.0	2,612.5	2,603.6	8.2	6.1	174.14	20.0	80.1	268.6	256.7	11.91	22.549		
2,700.0	2,665.7	2,711.6	2,700.9	8.6	6.5	171.87	23.1	99.1	275.8	263.3	12.53	22.017		
2,800.0	2,763.4	2,810.8	2,798.1	9.1	6.8	169.71	26.1	118.1	283.4	270.2	13.17	21.524		
2,900.0	2,861.1	2,909.9	2,895.4	9.5	7.2	167.67	29.2	137.2	291.4	277.6	13.83	21.067		
3,000.0	2,958.7	3,009.1	2,992.6	10.0	7.6	165.74	32.2	156.2	299.7	285.2	14.52	20.645		
3,100.0	3,056.4	3,108.2	3,089.9	10.4	7.9	163.91	35.2	175.2	308.4	293.2	15.23	20.254		
3,200.0	3,154.1	3,207.4	3,187.2	10.9	8.3	162.18	38.3	194.2	317.3	301.4	15.95	19.893		
3,300.0	3,251.8	3,306.5	3,284.4	11.3	8.7	160.55	41.3	213.2	326.6	309.9	16.70	19.561		
3,400.0	3,349.5	3,405.7	3,381.7	11.8	9.1	159.01	44.3	232.3	336.1	318.6	17.45	19.254		
3,500.0	3,447.2	3,504.8	3,478.9	12.2	9.5	157.55	47.4	251.3	345.8	327.5	18.23	18.971		
3,600.0	3,544.9	3,604.0	3,576.2	12.7	9.9	156.17	50.4	270.3	355.7	336.7	19.01	18.711		
3,700.0	3,642.6	3,703.1	3,673.5	13.1	10.3	154.87	53.4	289.3	365.8	346.0	19.80	18.472		
3,800.0	3,740.3	3,802.3	3,770.7	13.6	10.7	153.64	56.5	308.3	376.1	355.5	20.61	18.252		
3,900.0	3,838.0	3,901.4	3,868.0	14.0	11.1	152.47	59.5	327.3	386.6	365.1	21.42	18.049		
4,000.0	3,935.7	4,000.6	3,965.3	14.5	11.5	151.37	62.5	346.4	397.2	374.9	22.24	17.862		
4,100.0	4,033.4	4,099.7	4,062.5	15.0	11.9	150.32	65.6	365.4	407.9	384.9	23.06	17.690		
4,200.0	4,131.1	4,198.9	4,159.8	15.4	12.3	149.33	68.6	384.4	418.8	394.9	23.89	17.531		
4,300.0	4,228.8	4,298.0	4,257.0	15.9	12.7	148.39	71.7	403.4	429.8	405.1	24.72	17.384		
4,400.0	4,326.5	4,397.2	4,354.3	16.3	13.2	147.49	74.7	422.4	440.9	415.3	25.56	17.249		
4,500.0	4,424.2	4,496.3	4,451.6	16.8	13.6	146.64	77.7	441.4	452.1	425.7	26.40	17.124		
4,600.0	4,521.9	4,595.5	4,548.8	17.2	14.0	145.83	80.8	460.5	463.4	436.1	27.25	17.008		
4,700.0	4,619.6	4,694.6	4,646.1	17.7	14.4	145.06	83.8	479.5	474.8	446.7	28.09	16.901		
4,800.0	4,717.2	4,793.8	4,743.3	18.1	14.8	144.32	86.8	498.5	486.2	457.3	28.94	16.801		
4,900.0	4,814.9	4,892.9	4,840.6	18.6	15.2	143.62	89.9	517.5	497.8	468.0	29.79	16.709		
5,000.0	4,912.6	4,992.1	4,937.9	19.1	15.7	142.95	92.9	536.5	509.4	478.8	30.64	16.623		

CC - Min centre to center distance or convergent point, SF - min separation factor, ES - min ellipse separation

Company:	Synergy Resources	Local Co-ordinate Reference:	Well SRC Eberle 13-32NHZ
Project:	SEC.32-T1N-R66W	TVD Reference:	WELL @ 5044.0ft (RKB - 12')
Reference Site:	SRC Eberle 14-32CHZM Pad Sec.32-T1N-R66W	MD Reference:	WELL @ 5044.0ft (RKB - 12')
Site Error:	0.0ft	North Reference:	True
Reference Well:	SRC Eberle 13-32NHZ	Survey Calculation Method:	Minimum Curvature
Well Error:	0.0ft	Output errors are at	2.00 sigma
Reference Wellbore	Wellbore #1	Database:	Landmark
Reference Design:	Plan #1 (12-26-13)	Offset TVD Reference:	Offset Datum

Offset Design SRC Eberle 14-32CHZM Pad Sec.32-T1N-R66W - SRC Eberle B-32NHZ - Wellbore #1 - Plan #1 (12-26)													Offset Site Error:	0.0 ft
Survey Program: 0-MWD													Offset Well Error:	0.0 ft
Measured Depth (ft)	Vertical Depth (ft)	Measured Depth (ft)	Vertical Depth (ft)	Reference	Offset	Semi Major Axis	Highside Toolface (°)	Offset Wellbore Centre +N/-S (ft)	Offset Wellbore Centre +E/-W (ft)	Between Centres (ft)	Between Ellipses (ft)	Minimum Separation (ft)	Separation Factor	Warning
5,100.0	5,010.3	5,091.2	5,035.1	19.5	16.1	142.31		95.9	555.6	521.1	489.6	31.50	16.543	
5,200.0	5,108.0	5,190.4	5,132.4	20.0	16.5	141.70		99.0	574.6	532.8	500.5	32.35	16.469	
5,300.0	5,205.7	5,289.5	5,229.7	20.4	16.9	141.11		102.0	593.6	544.6	511.4	33.21	16.399	
5,400.0	5,303.4	5,388.7	5,326.9	20.9	17.3	140.55		105.0	612.6	556.5	522.4	34.07	16.335	
5,500.0	5,401.1	5,487.8	5,424.2	21.3	17.8	140.01		108.1	631.6	568.4	533.5	34.93	16.274	
5,600.0	5,498.8	5,587.0	5,521.4	21.8	18.2	139.50		111.1	650.6	580.3	544.6	35.78	16.218	
5,700.0	5,596.5	5,686.1	5,618.7	22.2	18.6	139.00		114.2	669.7	592.3	555.7	36.64	16.165	
5,800.0	5,694.2	5,785.3	5,716.0	22.7	19.0	138.53		117.2	688.7	604.4	566.9	37.50	16.115	
5,900.0	5,791.9	5,884.4	5,813.2	23.2	19.4	138.07		120.2	707.7	616.4	578.1	38.36	16.069	
6,000.0	5,889.6	5,983.6	5,910.5	23.6	19.9	137.63		123.3	726.7	628.6	589.3	39.22	16.025	
6,100.0	5,987.3	6,082.7	6,007.8	24.1	20.3	137.21		126.3	745.7	640.7	600.6	40.08	15.984	
6,200.0	6,085.3	6,179.5	6,102.8	24.5	20.7	136.92		129.2	763.7	651.8	610.9	40.88	15.945	
6,300.0	6,184.0	6,275.1	6,197.2	24.8	20.9	136.68		131.5	778.5	660.9	619.4	41.48	15.931	
6,400.0	6,283.2	6,370.9	6,292.3	25.0	21.2	136.49		133.4	790.3	668.1	626.1	42.00	15.908	
6,500.0	6,382.7	6,467.0	6,388.0	25.2	21.4	136.35		134.8	798.9	673.4	630.9	42.42	15.872	
6,600.0	6,482.5	6,563.2	6,484.0	25.4	21.6	136.27		135.6	804.3	676.6	633.9	42.76	15.824	
6,700.0	6,582.5	6,659.5	6,580.3	25.5	21.7	136.23		136.0	806.5	678.0	634.9	43.02	15.761	
6,800.0	6,682.5	6,758.7	6,679.5	25.6	21.9	-179.74		136.0	806.6	678.0	640.6	37.37	18.143	
6,900.0	6,782.5	6,858.7	6,779.4	25.8	22.0	-89.67		136.0	806.5	678.0	634.4	43.57	15.562	
7,000.0	6,882.0	6,958.2	6,878.5	25.8	22.0	-89.71		136.0	797.7	678.0	634.3	43.65	15.532	
7,100.0	6,979.2	7,057.7	6,975.4	25.7	21.9	-89.75		136.0	775.3	678.0	634.5	43.50	15.584	
7,200.0	7,072.3	7,157.4	7,068.3	25.6	21.8	-89.80		135.9	739.6	678.0	634.8	43.18	15.703	
7,300.0	7,159.4	7,257.1	7,155.5	25.3	21.6	-89.86		135.9	691.3	678.0	635.2	42.75	15.860	
7,400.0	7,238.8	7,356.9	7,235.2	25.1	21.3	-89.91		135.8	631.3	677.9	635.6	42.33	16.015	
7,500.0	7,309.1	7,456.8	7,305.9	24.8	21.2	-89.97		135.7	560.8	677.9	635.9	42.07	16.114	
7,600.0	7,368.7	7,556.8	7,366.1	24.5	21.2	-90.03		135.6	481.1	677.9	635.8	42.13	16.092	
7,700.0	7,416.7	7,656.9	7,414.7	24.3	21.5	-90.09		135.5	393.6	677.9	635.3	42.65	15.896	
7,800.0	7,451.9	7,757.1	7,450.6	24.1	22.0	-90.14		135.4	300.2	677.9	634.2	43.73	15.502	
7,900.0	7,473.8	7,857.4	7,473.2	24.2	22.8	-90.20		135.3	202.6	677.9	632.5	45.40	14.930	
8,000.0	7,482.0	7,957.8	7,481.9	24.5	23.9	-90.25		135.2	102.6	677.9	630.3	47.61	14.237	
8,100.0	7,482.0	8,057.9	7,482.0	25.3	25.3	-90.25		135.1	2.6	677.8	627.5	50.32	13.471	
8,200.0	7,482.0	8,157.9	7,482.0	26.7	26.8	-90.25		134.9	-97.4	677.8	624.4	53.45	12.682	
8,300.0	7,482.0	8,257.9	7,482.0	28.4	28.6	-90.25		134.8	-197.4	677.8	620.9	56.96	11.900	
8,400.0	7,482.0	8,357.9	7,482.0	30.3	30.5	-90.25		134.7	-297.4	677.8	617.0	60.79	11.150	
8,500.0	7,482.0	8,457.9	7,482.0	32.4	32.5	-90.25		134.6	-397.4	677.8	612.9	64.87	10.448	
8,600.0	7,482.0	8,557.9	7,482.0	34.6	34.7	-90.25		134.5	-497.4	677.8	608.6	69.17	9.798	
8,700.0	7,482.0	8,657.9	7,482.0	36.8	36.9	-90.25		134.3	-597.4	677.8	604.1	73.65	9.202	
8,800.0	7,482.0	8,757.9	7,482.0	39.2	39.2	-90.25		134.2	-697.4	677.7	599.5	78.27	8.658	
8,900.0	7,482.0	8,857.9	7,482.0	41.6	41.6	-90.25		134.1	-797.4	677.7	594.7	83.02	8.163	
9,000.0	7,482.0	8,957.9	7,482.0	44.0	44.0	-90.25		134.0	-897.4	677.7	589.8	87.87	7.713	
9,100.0	7,482.0	9,057.9	7,482.0	46.5	46.5	-90.25		133.9	-997.4	677.7	584.9	92.80	7.303	
9,200.0	7,482.0	9,157.9	7,482.0	49.0	49.0	-90.25		133.7	-1,097.4	677.7	579.9	97.80	6.929	
9,300.0	7,482.0	9,257.9	7,482.0	51.5	51.5	-90.25		133.6	-1,197.4	677.7	574.8	102.87	6.588	
9,400.0	7,482.0	9,357.9	7,482.0	54.1	54.0	-90.25		133.5	-1,297.4	677.6	569.7	107.99	6.275	
9,500.0	7,482.0	9,457.9	7,482.0	56.7	56.6	-90.25		133.4	-1,397.4	677.6	564.5	113.16	5.988	
9,600.0	7,482.0	9,557.9	7,482.0	59.3	59.2	-90.25		133.3	-1,497.4	677.6	559.2	118.36	5.725	
9,700.0	7,482.0	9,657.9	7,482.0	61.9	61.8	-90.25		133.1	-1,597.4	677.6	554.0	123.61	5.482	
9,800.0	7,482.0	9,757.9	7,482.0	64.6	64.5	-90.25		133.0	-1,697.4	677.6	548.7	128.88	5.257	
9,900.0	7,482.0	9,857.9	7,482.0	67.2	67.1	-90.25		132.9	-1,797.4	677.6	543.4	134.18	5.050	
10,000.0	7,482.0	9,957.9	7,482.0	69.9	69.8	-90.25		132.8	-1,897.4	677.5	538.0	139.50	4.857	
10,100.0	7,482.0	10,057.9	7,482.0	72.6	72.5	-90.25		132.7	-1,997.4	677.5	532.7	144.85	4.677	

CC - Min centre to center distance or convergent point, SF - min separation factor, ES - min ellipse separation

Company:	Synergy Resources	Local Co-ordinate Reference:	Well SRC Eberle 13-32NHZ
Project:	SEC.32-T1N-R66W	TVD Reference:	WELL @ 5044.0ft (RKB - 12')
Reference Site:	SRC Eberle 14-32CHZM Pad Sec.32-T1N-R66W	MD Reference:	WELL @ 5044.0ft (RKB - 12')
Site Error:	0.0ft	North Reference:	True
Reference Well:	SRC Eberle 13-32NHZ	Survey Calculation Method:	Minimum Curvature
Well Error:	0.0ft	Output errors are at	2.00 sigma
Reference Wellbore	Wellbore #1	Database:	Landmark
Reference Design:	Plan #1 (12-26-13)	Offset TVD Reference:	Offset Datum

Offset Design												Offset Site Error:	0.0 ft
Survey Program: 0-MWD												Offset Well Error:	0.0 ft
SRC Eberle 14-32CHZM Pad Sec.32-T1N-R66W - SRC Eberle B-32NHZ - Wellbore #1 - Plan #1 (12-26)													
Reference		Offset		Semi Major Axis			Distance						
Measured Depth (ft)	Vertical Depth (ft)	Measured Depth (ft)	Vertical Depth (ft)	Reference (ft)	Offset (ft)	Highside Toolface (°)	Offset Wellbore Centre +N/-S (ft)	+E/-W (ft)	Between Centres (ft)	Between Ellipses (ft)	Minimum Separation (ft)	Separation Factor	Warning
10,200.0	7,482.0	10,157.9	7,482.0	75.3	75.1	-90.25	132.5	-2,097.4	677.5	527.3	150.22	4.510	
10,300.0	7,482.0	10,257.9	7,482.0	77.9	77.8	-90.25	132.4	-2,197.4	677.5	521.9	155.60	4.354	
10,400.0	7,482.0	10,357.9	7,482.0	80.6	80.5	-90.25	132.3	-2,297.4	677.5	516.5	161.00	4.208	
10,500.0	7,482.0	10,457.9	7,482.0	83.3	83.2	-90.25	132.2	-2,397.4	677.5	511.1	166.41	4.071	
10,600.0	7,482.0	10,557.9	7,482.0	86.1	85.9	-90.25	132.1	-2,497.4	677.4	505.6	171.83	3.943	
10,700.0	7,482.0	10,657.9	7,482.0	88.8	88.7	-90.25	132.0	-2,597.4	677.4	500.2	177.27	3.822	
10,800.0	7,482.0	10,757.9	7,482.0	91.5	91.4	-90.25	131.8	-2,697.4	677.4	494.7	182.71	3.708	
10,900.0	7,482.0	10,857.9	7,482.0	94.2	94.1	-90.25	131.7	-2,797.4	677.4	489.2	188.17	3.600	
11,000.0	7,482.0	10,957.9	7,482.0	97.0	96.8	-90.25	131.6	-2,897.4	677.4	483.8	193.63	3.498	
11,100.0	7,482.0	11,057.9	7,482.0	99.7	99.6	-90.25	131.5	-2,997.4	677.4	478.3	199.10	3.402	
11,200.0	7,482.0	11,157.9	7,482.0	102.4	102.3	-90.25	131.4	-3,097.4	677.4	472.8	204.58	3.311	
11,300.0	7,482.0	11,257.9	7,482.0	105.2	105.1	-90.25	131.2	-3,197.4	677.3	467.3	210.07	3.224	
11,400.0	7,482.0	11,357.9	7,482.0	107.9	107.8	-90.25	131.1	-3,297.4	677.3	461.8	215.56	3.142	
11,500.0	7,482.0	11,457.9	7,482.0	110.7	110.5	-90.25	131.0	-3,397.4	677.3	456.2	221.06	3.064	
11,600.0	7,482.0	11,557.9	7,482.0	113.4	113.3	-90.25	130.9	-3,497.4	677.3	450.7	226.56	2.989	
11,700.0	7,482.0	11,657.9	7,482.0	116.2	116.1	-90.25	130.8	-3,597.4	677.3	445.2	232.07	2.918	
11,800.0	7,482.0	11,757.9	7,482.0	118.9	118.8	-90.25	130.6	-3,697.4	677.3	439.7	237.58	2.851	
11,900.0	7,482.0	11,857.9	7,482.0	121.7	121.6	-90.25	130.5	-3,797.4	677.2	434.1	243.10	2.786	
12,000.0	7,482.0	11,957.9	7,482.0	124.4	124.3	-90.25	130.4	-3,897.4	677.2	428.6	248.62	2.724	
12,022.3	7,482.0	11,980.2	7,482.0	125.1	124.9	-90.25	130.4	-3,919.7	677.2	427.4	249.86	2.710 SF	

Reference Depths are relative to WELL @ 5044.0ft (RKB - 12')	Coordinates are relative to: SRC Eberle 13-32NHZ
Offset Depths are relative to Offset Datum	Coordinate System is US State Plane 1983, Colorado Northern Zone
Central Meridian is -105.500000 °	Grid Convergence at Surface is: 0.46°



Company:	Synergy Resources	Local Co-ordinate Reference:	Well SRC Eberle 13-32NHZ
Project:	SEC.32-T1N-R66W	TVD Reference:	WELL @ 5044.0ft (RKB - 12')
Reference Site:	SRC Eberle 14-32CHZM Pad Sec.32-T1N-R66W	MD Reference:	WELL @ 5044.0ft (RKB - 12')
Site Error:	0.0ft	North Reference:	True
Reference Well:	SRC Eberle 13-32NHZ	Survey Calculation Method:	Minimum Curvature
Well Error:	0.0ft	Output errors are at	2.00 sigma
Reference Wellbore	Wellbore #1	Database:	Landmark
Reference Design:	Plan #1 (12-26-13)	Offset TVD Reference:	Offset Datum

Reference Depths are relative to WELL @ 5044.0ft (RKB - 12')
 Offset Depths are relative to Offset Datum
 Central Meridian is -105.500000 °

Coordinates are relative to: SRC Eberle 13-32NHZ
 Coordinate System is US State Plane 1983, Colorado Northern Zone
 Grid Convergence at Surface is: 0.46°

