

BONANZA CREEK OIL COMPANY

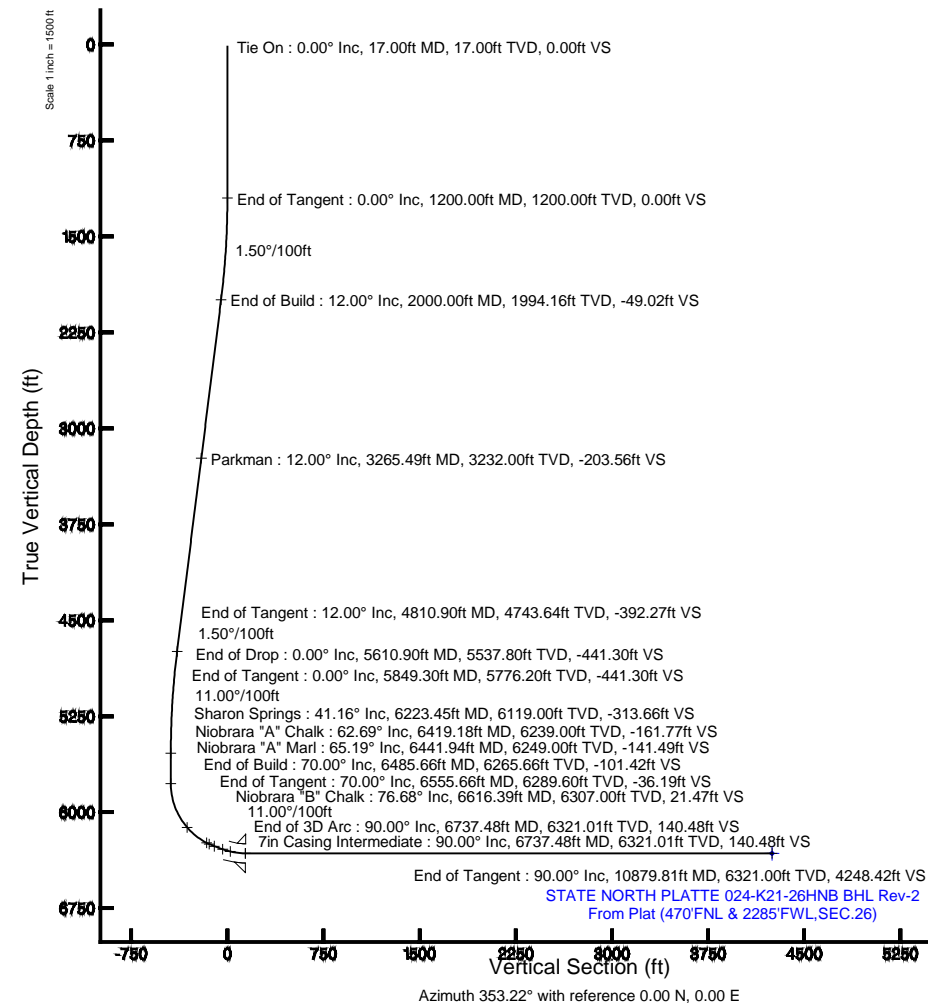
Location: COLORADO Slot: SLOT#08 STATE NORTH PLATTE 024-K21-26HNB (519°FSL & 2382°FEL,SEC.26)
Field: WELD COUNTY Well: STATE NORTH PLATTE 024-K21-26HNB
Facility: SEC.26-T5N-R63W Wellbore: STATE NORTH PLATTE 024-K21-26HNB PWB

Plot reference wellpath is STATE NORTH PLATTE 024-K21-26HNB (REV-B.0) PWP

True vertical depths are referenced to CADE 22 (RKB) Grid System: NAD83 / Lambert Colorado SP, Northern Zone (501), US feet
Measured depths are referenced to CADE 22 (RKB) North Reference: True north
CADE 22 (RKB) to Mean Sea Level: 4567 feet Scale: True distance
Mean Sea Level to Mud line (At Slot: SLOT#08 STATE NORTH PLATTE 024-K21-26HNB (519°FSL & 2382°FEL,SEC.26)): 0 feet Depths are in feet
Coordinates are in feet referenced to Slot Created by: guenaler on 11/7/2013

Location Information

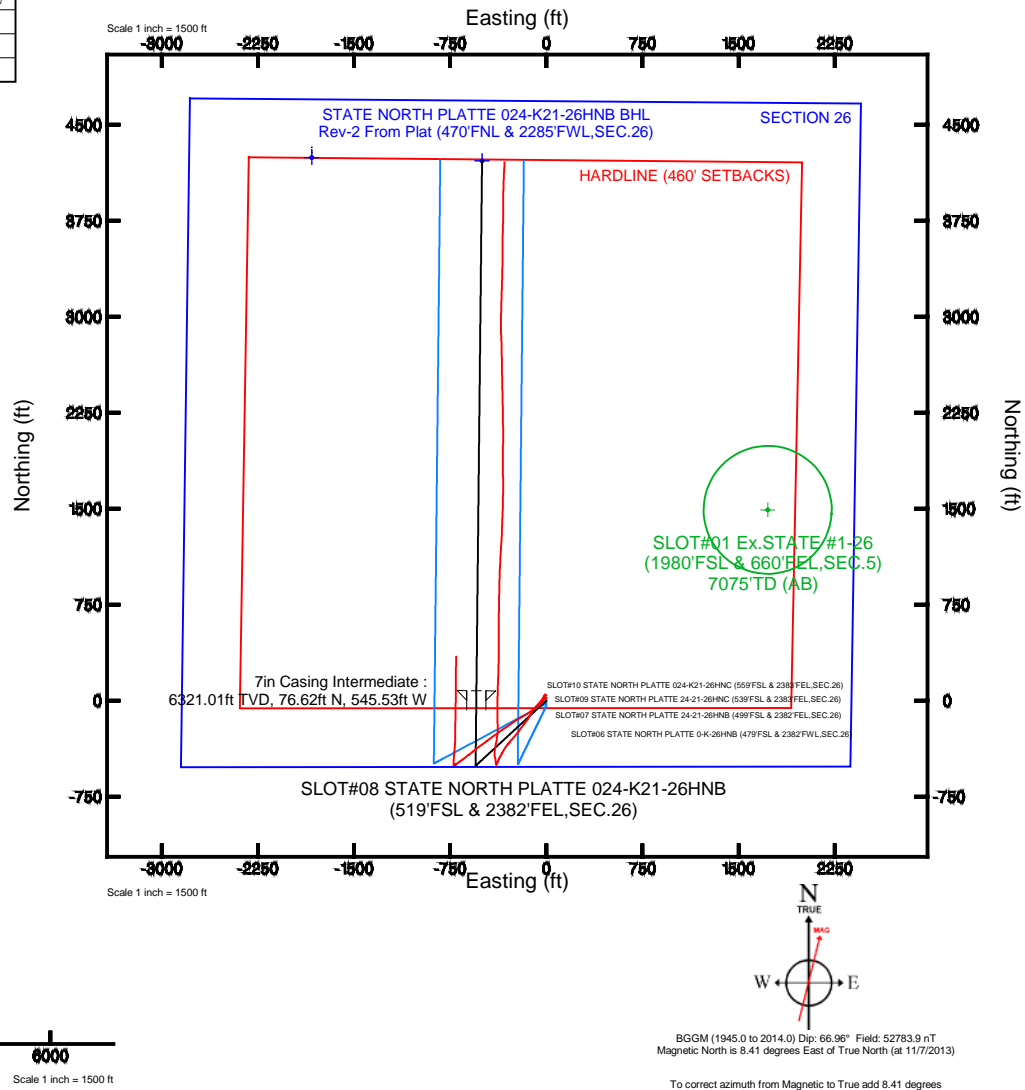
Facility Name				Grid East (US ft)	Grid North (US ft)	Latitude	Longitude
SEC.26-T5N-R63W				3303950.838	1381774.536	40°22'34.464"N	104°24'32.436"W
Slot	Local N (ft)	Local E (ft)	Grid East (US ft)	Grid North (US ft)	Latitude	Longitude	
SLOT#08 STATE NORTH PLATTE 024-K21-26HNB (519°FSL & 2382°FEL,SEC.26)	-4244.15	1830.85	3305833.681	1377553.417	40°21'52.524"N	104°24'08.784"W	
CADE 22 (RKB) to Mud line (At Slot: SLOT#08 STATE NORTH PLATTE 024-K21-26HNB (519°FSL & 2382°FEL,SEC.26))						4567ft	
Mean Sea Level to Mud line (At Slot: SLOT#08 STATE NORTH PLATTE 024-K21-26HNB (519°FSL & 2382°FEL,SEC.26))						0ft	
CADE 22 (RKB) to Mean Sea Level						4567ft	



Well Profile Data									
Design Comment	MD (ft)	Inc (°)	Az (°)	TVD (ft)	Local N (ft)	Local E (ft)	DLS (°/100ft)	VS (ft)	
Tie On	17.00	0.000	227.252	17.00	0.00	0.00	0.00	0.00	
End of Tangent	1200.00	0.000	227.252	1200.00	0.00	0.00	0.00	0.00	
End of Build	2000.00	12.000	227.252	1994.16	-56.66	-61.30	1.50	-49.02	
End of Tangent	4810.90	12.000	227.252	4743.64	-453.34	-490.46	0.00	-392.27	
End of Drop	5610.90	0.000	0.609	5537.80	-510.00	-551.76	1.50	-441.30	
End of Tangent	5849.30	0.000	0.609	5776.20	-510.00	-551.76	0.00	-441.30	
End of Build	6485.66	70.000	0.609	6265.66	-167.30	-548.12	11.00	-101.42	
End of Tangent	6555.66	70.000	0.609	6289.60	-101.52	-547.42	0.00	-36.19	
End of 3D Arc	6737.48	90.000	0.609	6321.01	76.62	-545.53	11.00	140.48	
End of Tangent	10879.81	90.000	0.609	6321.00	4218.72	-501.52	0.00	4248.42	

Targets									
Name	MD (ft)	TVD (ft)	Local N (ft)	Local E (ft)	Distance (ft)	Distance (ft)	Latitude	Longitude	
STATE NORTH PLATTE 024-K21-26HNB SECTION 26	-15.00	4584.28	-1880.00	1880.00	10879.81	10879.81	40°22'34.464"N	104°24'08.784"W	
STATE NORTH PLATTE 024-K21-26HNB BHL Rev-2 From Plat (470°FNL & 2285°FWL,SEC.26)	10879.81	6321.00	4218.72	-501.52	10879.81	10879.81	40°22'34.464"N	104°24'08.784"W	
STATE NORTH PLATTE 024-K21-26HNB BHL Rev-2 From Plat (470°FNL & 2285°FWL,SEC.26)	6321.01	6321.01	76.62	-545.53	10879.81	10879.81	40°22'34.464"N	104°24'08.784"W	
STATE NORTH PLATTE 024-K21-26HNB BHL Rev-2 From Plat (470°FNL & 2285°FWL,SEC.26)	6321.01	6321.01	76.62	-545.53	10879.81	10879.81	40°22'34.464"N	104°24'08.784"W	
STATE NORTH PLATTE 024-K21-26HNB BHL Rev-2 From Plat (470°FNL & 2285°FWL,SEC.26)	6321.01	6321.01	76.62	-545.53	10879.81	10879.81	40°22'34.464"N	104°24'08.784"W	
STATE NORTH PLATTE 024-K21-26HNB BHL Rev-2 From Plat (470°FNL & 2285°FWL,SEC.26)	6321.01	6321.01	76.62	-545.53	10879.81	10879.81	40°22'34.464"N	104°24'08.784"W	
STATE NORTH PLATTE 024-K21-26HNB BHL Rev-2 From Plat (470°FNL & 2285°FWL,SEC.26)	6321.01	6321.01	76.62	-545.53	10879.81	10879.81	40°22'34.464"N	104°24'08.784"W	
STATE NORTH PLATTE 024-K21-26HNB BHL Rev-2 From Plat (470°FNL & 2285°FWL,SEC.26)	6321.01	6321.01	76.62	-545.53	10879.81	10879.81	40°22'34.464"N	104°24'08.784"W	
STATE NORTH PLATTE 024-K21-26HNB BHL Rev-2 From Plat (470°FNL & 2285°FWL,SEC.26)	6321.01	6321.01	76.62	-545.53	10879.81	10879.81	40°22'34.464"N	104°24'08.784"W	

Survey Program					
Start MD (ft)	End MD (ft)	Tool	Model	Log Name/Comment	Wellbore
17.00	10879.81	NavTrak	NavTrak (Standard)		STATE NORTH PLATTE 024-K21-26HNB PWB





Planned Wellpath Report

STATE NORTH PLATTE 024-K21-26HNB (REV-B.0) PWP
Page 1 of 8



REFERENCE WELLPATH IDENTIFICATION

Operator	BONANZA CREEK OIL COMPANY	Slot	SLOT#08 STATE NORTH PLATTE 024-K21-26HNB (519'FSL & 2382'FEL,SEC.26)
Area	COLORADO	Well	STATE NORTH PLATTE 024-K21-26HNB
Field	WELD COUNTY	Wellbore	STATE NORTH PLATTE 024-K21-26HNB PWB
Facility	SEC.26-T5N-R63W		

REPORT SETUP INFORMATION

Projection System	NAD83 / Lambert Colorado SP, Northern Zone (501), US feet	Software System	WellArchitect® 4.0.0
North Reference	True	User	Guenaler
Scale	0.999959	Report Generated	11/7/2013 at 5:04:51 PM
Convergence at slot	n/a	Database/Source file	WA_Denver/STATE_NORTH_PLATTE_024-K21-26HNB_PWB.xml

WELLPATH LOCATION

	Local coordinates		Grid coordinates		Geographic coordinates	
	North[ft]	East[ft]	Easting[US ft]	Northing[US ft]	Latitude	Longitude
Slot Location	-4244.15	1830.85	3305833.68	1377553.42	40°21'52.524"N	104°24'08.784"W
Facility Reference Pt			3303950.84	1381774.54	40°22'34.464"N	104°24'32.436"W
Field Reference Pt			3327718.19	1377782.99	40°21'52.020"N	104°19'26.040"W

WELLPATH DATUM

Calculation method	Minimum curvature	CADE 22 (RKB) to Facility Vertical Datum	4567.00ft
Horizontal Reference Pt	Slot	CADE 22 (RKB) to Mean Sea Level	4567.00ft
Vertical Reference Pt	CADE 22 (RKB)	CADE 22 (RKB) to Mud Line at Slot (SLOT#08 STATE NORTH PLATTE 024-K21-26HNB (519'FSL & 2382'FEL,SEC.26))	4567.00ft
MD Reference Pt	CADE 22 (RKB)	Section Origin	N 0.00, E 0.00 ft
Field Vertical Reference	Mean Sea Level	Section Azimuth	353.22°



Planned Wellpath Report

STATE NORTH PLATTE 024-K21-26HNB (REV-B.0) PWP
Page 2 of 8



REFERENCE WELLPATH IDENTIFICATION			
Operator	BONANZA CREEK OIL COMPANY	Slot	SLOT#08 STATE NORTH PLATTE 024-K21-26HNB (519'FSL & 2382'FEL,SEC.26)
Area	COLORADO	Well	STATE NORTH PLATTE 024-K21-26HNB
Field	WELD COUNTY	Wellbore	STATE NORTH PLATTE 024-K21-26HNB PWB
Facility	SEC.26-T5N-R63W		

WELLPATH DATA (124 stations) † = interpolated/extrapolated station										
MD [ft]	Inclination [°]	Azimuth [°]	TVD [ft]	Vert Sect [ft]	North [ft]	East [ft]	Latitude	Longitude	DLS [°/100ft]	Comments
0.00†	0.000	227.252	0.00	0.00	0.00	0.00	40°21'52.524"N	104°24'08.784"W	0.00	
17.00	0.000	227.252	17.00	0.00	0.00	0.00	40°21'52.524"N	104°24'08.784"W	0.00	Tie On
117.00†	0.000	227.252	117.00	0.00	0.00	0.00	40°21'52.524"N	104°24'08.784"W	0.00	
217.00†	0.000	227.252	217.00	0.00	0.00	0.00	40°21'52.524"N	104°24'08.784"W	0.00	
317.00†	0.000	227.252	317.00	0.00	0.00	0.00	40°21'52.524"N	104°24'08.784"W	0.00	
417.00†	0.000	227.252	417.00	0.00	0.00	0.00	40°21'52.524"N	104°24'08.784"W	0.00	
517.00†	0.000	227.252	517.00	0.00	0.00	0.00	40°21'52.524"N	104°24'08.784"W	0.00	
617.00†	0.000	227.252	617.00	0.00	0.00	0.00	40°21'52.524"N	104°24'08.784"W	0.00	
717.00†	0.000	227.252	717.00	0.00	0.00	0.00	40°21'52.524"N	104°24'08.784"W	0.00	
817.00†	0.000	227.252	817.00	0.00	0.00	0.00	40°21'52.524"N	104°24'08.784"W	0.00	
917.00†	0.000	227.252	917.00	0.00	0.00	0.00	40°21'52.524"N	104°24'08.784"W	0.00	
1017.00†	0.000	227.252	1017.00	0.00	0.00	0.00	40°21'52.524"N	104°24'08.784"W	0.00	
1117.00†	0.000	227.252	1117.00	0.00	0.00	0.00	40°21'52.524"N	104°24'08.784"W	0.00	
1200.00	0.000	227.252	1200.00	0.00	0.00	0.00	40°21'52.524"N	104°24'08.784"W	0.00	End of Tangent
1217.00†	0.255	227.252	1217.00	-0.02	-0.03	-0.03	40°21'52.524"N	104°24'08.784"W	1.50	
1317.00†	1.755	227.252	1316.98	-1.05	-1.22	-1.32	40°21'52.512"N	104°24'08.801"W	1.50	
1417.00†	3.255	227.252	1416.88	-3.62	-4.18	-4.53	40°21'52.483"N	104°24'08.842"W	1.50	
1517.00†	4.755	227.252	1516.64	-7.72	-8.92	-9.65	40°21'52.436"N	104°24'08.909"W	1.50	
1617.00†	6.255	227.252	1616.17	-13.36	-15.43	-16.70	40°21'52.371"N	104°24'09.000"W	1.50	
1717.00†	7.755	227.252	1715.42	-20.52	-23.71	-25.65	40°21'52.290"N	104°24'09.115"W	1.50	
1817.00†	9.255	227.252	1814.32	-29.20	-33.75	-36.51	40°21'52.190"N	104°24'09.256"W	1.50	
1917.00†	10.755	227.252	1912.80	-39.41	-45.54	-49.27	40°21'52.074"N	104°24'09.421"W	1.50	
2000.00	12.000	227.252	1994.16	-49.02	-56.66	-61.30	40°21'51.964"N	104°24'09.576"W	1.50	End of Build
2017.00†	12.000	227.252	2010.79	-51.10	-59.06	-63.89	40°21'51.940"N	104°24'09.609"W	0.00	
2117.00†	12.000	227.252	2108.61	-63.31	-73.17	-79.16	40°21'51.801"N	104°24'09.807"W	0.00	
2217.00†	12.000	227.252	2206.42	-75.52	-87.28	-94.43	40°21'51.662"N	104°24'10.004"W	0.00	
2317.00†	12.000	227.252	2304.24	-87.74	-101.39	-109.70	40°21'51.522"N	104°24'10.201"W	0.00	
2417.00†	12.000	227.252	2402.05	-99.95	-115.51	-124.96	40°21'51.383"N	104°24'10.398"W	0.00	
2517.00†	12.000	227.252	2499.87	-112.16	-129.62	-140.23	40°21'51.243"N	104°24'10.596"W	0.00	
2617.00†	12.000	227.252	2597.68	-124.37	-143.73	-155.50	40°21'51.104"N	104°24'10.793"W	0.00	



Planned Wellpath Report

STATE NORTH PLATTE 024-K21-26HNB (REV-B.0) PWP
Page 3 of 8



REFERENCE WELLPATH IDENTIFICATION			
Operator	BONANZA CREEK OIL COMPANY	Slot	SLOT#08 STATE NORTH PLATTE 024-K21-26HNB (519'FSL & 2382'FEL,SEC.26)
Area	COLORADO	Well	STATE NORTH PLATTE 024-K21-26HNB
Field	WELD COUNTY	Wellbore	STATE NORTH PLATTE 024-K21-26HNB PWB
Facility	SEC.26-T5N-R63W		

WELLPATH DATA (124 stations) † = interpolated/extrapolated station										
MD [ft]	Inclination [°]	Azimuth [°]	TVD [ft]	Vert Sect [ft]	North [ft]	East [ft]	Latitude	Longitude	DLS [°/100ft]	Comments
2717.00†	12.000	227.252	2695.50	-136.58	-157.84	-170.77	40°21'50.964"N	104°24'10.990"W	0.00	
2817.00†	12.000	227.252	2793.31	-148.79	-171.96	-186.04	40°21'50.825"N	104°24'11.187"W	0.00	
2917.00†	12.000	227.252	2891.13	-161.00	-186.07	-201.30	40°21'50.685"N	104°24'11.385"W	0.00	
3017.00†	12.000	227.252	2988.94	-173.21	-200.18	-216.57	40°21'50.546"N	104°24'11.582"W	0.00	
3117.00†	12.000	227.252	3086.76	-185.43	-214.29	-231.84	40°21'50.406"N	104°24'11.779"W	0.00	
3217.00†	12.000	227.252	3184.57	-197.64	-228.41	-247.11	40°21'50.267"N	104°24'11.976"W	0.00	
3265.49†	12.000	227.252	3232.00	-203.56	-235.25	-254.51	40°21'50.199"N	104°24'12.072"W	0.00	Parkman
3317.00†	12.000	227.252	3282.38	-209.85	-242.52	-262.38	40°21'50.127"N	104°24'12.173"W	0.00	
3417.00†	12.000	227.252	3380.20	-222.06	-256.63	-277.64	40°21'49.988"N	104°24'12.371"W	0.00	
3517.00†	12.000	227.252	3478.01	-234.27	-270.74	-292.91	40°21'49.849"N	104°24'12.568"W	0.00	
3617.00†	12.000	227.252	3575.83	-246.48	-284.86	-308.18	40°21'49.709"N	104°24'12.765"W	0.00	
3717.00†	12.000	227.252	3673.64	-258.69	-298.97	-323.45	40°21'49.570"N	104°24'12.962"W	0.00	
3817.00†	12.000	227.252	3771.46	-270.91	-313.08	-338.72	40°21'49.430"N	104°24'13.160"W	0.00	
3917.00†	12.000	227.252	3869.27	-283.12	-327.19	-353.98	40°21'49.291"N	104°24'13.357"W	0.00	
4017.00†	12.000	227.252	3967.09	-295.33	-341.30	-369.25	40°21'49.151"N	104°24'13.554"W	0.00	
4117.00†	12.000	227.252	4064.90	-307.54	-355.42	-384.52	40°21'49.012"N	104°24'13.751"W	0.00	
4217.00†	12.000	227.252	4162.72	-319.75	-369.53	-399.79	40°21'48.872"N	104°24'13.949"W	0.00	
4317.00†	12.000	227.252	4260.53	-331.96	-383.64	-415.06	40°21'48.733"N	104°24'14.146"W	0.00	
4417.00†	12.000	227.252	4358.35	-344.17	-397.75	-430.32	40°21'48.593"N	104°24'14.343"W	0.00	
4517.00†	12.000	227.252	4456.16	-356.39	-411.87	-445.59	40°21'48.454"N	104°24'14.540"W	0.00	
4617.00†	12.000	227.252	4553.98	-368.60	-425.98	-460.86	40°21'48.315"N	104°24'14.738"W	0.00	
4717.00†	12.000	227.252	4651.79	-380.81	-440.09	-476.13	40°21'48.175"N	104°24'14.935"W	0.00	
4810.90	12.000	227.252	4743.64	-392.27	-453.34	-490.46	40°21'48.044"N	104°24'15.120"W	0.00	End of Tangent
4817.00†	11.908	227.252	4749.61	-393.02	-454.20	-491.39	40°21'48.036"N	104°24'15.132"W	1.50	
4917.00†	10.408	227.252	4847.71	-404.38	-467.34	-505.60	40°21'47.906"N	104°24'15.316"W	1.50	
5017.00†	8.908	227.252	4946.29	-414.24	-478.72	-517.92	40°21'47.793"N	104°24'15.475"W	1.50	
5117.00†	7.408	227.252	5045.28	-422.57	-488.36	-528.34	40°21'47.698"N	104°24'15.609"W	1.50	
5217.00†	5.908	227.252	5144.60	-429.38	-496.23	-536.86	40°21'47.620"N	104°24'15.719"W	1.50	
5317.00†	4.408	227.252	5244.19	-434.66	-502.33	-543.46	40°21'47.560"N	104°24'15.805"W	1.50	
5417.00†	2.908	227.252	5343.99	-438.41	-506.66	-548.15	40°21'47.517"N	104°24'15.865"W	1.50	



Planned Wellpath Report

STATE NORTH PLATTE 024-K21-26HNB (REV-B.0) PWP
Page 4 of 8



REFERENCE WELLPATH IDENTIFICATION			
Operator	BONANZA CREEK OIL COMPANY	Slot	SLOT#08 STATE NORTH PLATTE 024-K21-26HNB (519'FSL & 2382'FEL,SEC.26)
Area	COLORADO	Well	STATE NORTH PLATTE 024-K21-26HNB
Field	WELD COUNTY	Wellbore	STATE NORTH PLATTE 024-K21-26HNB PWB
Facility	SEC.26-T5N-R63W		

WELLPATH DATA (124 stations) † = interpolated/extrapolated station										
MD [ft]	Inclination [°]	Azimuth [°]	TVD [ft]	Vert Sect [ft]	North [ft]	East [ft]	Latitude	Longitude	DLS [°/100ft]	Comments
5517.00†	1.408	227.252	5443.91	-440.62	-509.22	-550.91	40°21'47.492"N	104°24'15.901"W	1.50	
5610.90	0.000	0.609	5537.80	-441.30	-510.00	-551.76	40°21'47.484"N	104°24'15.912"W	1.50	End of Drop
5617.00†	0.000	0.609	5543.90	-441.30	-510.00	-551.76	40°21'47.484"N	104°24'15.912"W	0.00	
5717.00†	0.000	0.609	5643.90	-441.30	-510.00	-551.76	40°21'47.484"N	104°24'15.912"W	0.00	
5817.00†	0.000	0.609	5743.90	-441.30	-510.00	-551.76	40°21'47.484"N	104°24'15.912"W	0.00	
5849.30	0.000	0.609	5776.20	-441.30	-510.00	-551.76	40°21'47.484"N	104°24'15.912"W	0.00	End of Tangent
5917.00†	7.447	0.609	5843.71	-436.94	-505.61	-551.71	40°21'47.528"N	104°24'15.911"W	11.00	
6017.00†	18.447	0.609	5941.02	-414.76	-483.24	-551.48	40°21'47.749"N	104°24'15.908"W	11.00	
6117.00†	29.447	0.609	6032.27	-374.57	-442.71	-551.04	40°21'48.149"N	104°24'15.903"W	11.00	
6217.00†	40.447	0.609	6114.11	-317.85	-385.52	-550.44	40°21'48.714"N	104°24'15.895"W	11.00	
6223.45†	41.157	0.609	6119.00	-313.66	-381.30	-550.39	40°21'48.756"N	104°24'15.894"W	11.00	Sharon Springs
6317.00†	51.447	0.609	6183.54	-246.68	-313.76	-549.67	40°21'49.423"N	104°24'15.885"W	11.00	
6417.00†	62.447	0.609	6238.00	-163.69	-230.08	-548.78	40°21'50.250"N	104°24'15.873"W	11.00	
6419.18†	62.687	0.609	6239.00	-161.77	-228.15	-548.76	40°21'50.269"N	104°24'15.873"W	11.00	Niobrara "A" Chalk
6441.94†	65.191	0.609	6249.00	-141.49	-207.70	-548.55	40°21'50.472"N	104°24'15.870"W	11.00	Niobrara "A" Marl
6485.66	70.000	0.609	6265.66	-101.42	-167.30	-548.12	40°21'50.871"N	104°24'15.865"W	11.00	End of Build
6517.00†	70.000	0.609	6276.38	-72.22	-137.85	-547.80	40°21'51.162"N	104°24'15.861"W	0.00	
6555.66	70.000	0.609	6289.60	-36.19	-101.52	-547.42	40°21'51.521"N	104°24'15.856"W	0.00	End of Tangent
6616.39†	76.680	0.609	6307.00	21.47	-43.38	-546.80	40°21'52.095"N	104°24'15.848"W	11.00	Niobrara "B" Chalk
6617.00†	76.747	0.609	6307.14	22.06	-42.78	-546.79	40°21'52.101"N	104°24'15.848"W	11.00	
6717.00†	87.747	0.609	6320.61	120.18	56.14	-545.74	40°21'53.079"N	104°24'15.834"W	11.00	
6737.48	90.000	0.609	6321.01	140.48	76.62	-545.53	40°21'53.281"N	104°24'15.831"W	11.00	End of 3D Arc
6817.00†	90.000	0.609	6321.01	219.34	156.13	-544.68	40°21'54.067"N	104°24'15.821"W	0.00	
6917.00†	90.000	0.609	6321.01	318.51	256.13	-543.62	40°21'55.055"N	104°24'15.807"W	0.00	
7017.00†	90.000	0.609	6321.01	417.68	356.12	-542.56	40°21'56.043"N	104°24'15.793"W	0.00	
7117.00†	90.000	0.609	6321.01	516.85	456.12	-541.49	40°21'57.031"N	104°24'15.779"W	0.00	
7217.00†	90.000	0.609	6321.01	616.02	556.11	-540.43	40°21'58.019"N	104°24'15.766"W	0.00	
7317.00†	90.000	0.609	6321.01	715.19	656.11	-539.37	40°21'59.007"N	104°24'15.752"W	0.00	
7417.00†	90.000	0.609	6321.01	814.36	756.10	-538.31	40°22'00.000"N	104°24'15.738"W	0.00	
7517.00†	90.000	0.609	6321.01	913.53	856.09	-537.24	40°22'00.984"N	104°24'15.725"W	0.00	



Planned Wellpath Report

STATE NORTH PLATTE 024-K21-26HNB (REV-B.0) PWP
Page 5 of 8



REFERENCE WELLPATH IDENTIFICATION			
Operator	BONANZA CREEK OIL COMPANY	Slot	SLOT#08 STATE NORTH PLATTE 024-K21-26HNB (519'FSL & 2382'FEL,SEC.26)
Area	COLORADO	Well	STATE NORTH PLATTE 024-K21-26HNB
Field	WELD COUNTY	Wellbore	STATE NORTH PLATTE 024-K21-26HNB PWB
Facility	SEC.26-T5N-R63W		

WELLPATH DATA (124 stations) † = interpolated/extrapolated station										
MD [ft]	Inclination [°]	Azimuth [°]	TVD [ft]	Vert Sect [ft]	North [ft]	East [ft]	Latitude	Longitude	DLS [°/100ft]	Comments
7617.00†	90.000	0.609	6321.01	1012.70	956.09	-536.18	40°22'01.972"N	104°24'15.711"W	0.00	
7717.00†	90.000	0.609	6321.01	1111.87	1056.08	-535.12	40°22'02.960"N	104°24'15.697"W	0.00	
7817.00†	90.000	0.609	6321.01	1211.04	1156.08	-534.06	40°22'03.948"N	104°24'15.684"W	0.00	
7917.00†	90.000	0.609	6321.01	1310.21	1256.07	-532.99	40°22'04.936"N	104°24'15.670"W	0.00	
8017.00†	90.000	0.609	6321.01	1409.38	1356.07	-531.93	40°22'05.924"N	104°24'15.656"W	0.00	
8117.00†	90.000	0.609	6321.01	1508.55	1456.06	-530.87	40°22'06.912"N	104°24'15.643"W	0.00	
8217.00†	90.000	0.609	6321.01	1607.72	1556.05	-529.81	40°22'07.900"N	104°24'15.629"W	0.00	
8317.00†	90.000	0.609	6321.01	1706.89	1656.05	-528.75	40°22'08.889"N	104°24'15.615"W	0.00	
8417.00†	90.000	0.609	6321.01	1806.06	1756.04	-527.68	40°22'09.877"N	104°24'15.601"W	0.00	
8517.00†	90.000	0.609	6321.01	1905.23	1856.04	-526.62	40°22'10.865"N	104°24'15.588"W	0.00	
8617.00†	90.000	0.609	6321.01	2004.40	1956.03	-525.56	40°22'11.853"N	104°24'15.574"W	0.00	
8717.00†	90.000	0.609	6321.01	2103.57	2056.03	-524.50	40°22'12.841"N	104°24'15.560"W	0.00	
8817.00†	90.000	0.609	6321.01	2202.74	2156.02	-523.43	40°22'13.829"N	104°24'15.547"W	0.00	
8917.00†	90.000	0.609	6321.01	2301.91	2256.02	-522.37	40°22'14.817"N	104°24'15.533"W	0.00	
9017.00†	90.000	0.609	6321.01	2401.08	2356.01	-521.31	40°22'15.805"N	104°24'15.519"W	0.00	
9117.00†	90.000	0.609	6321.00	2500.25	2456.00	-520.25	40°22'16.793"N	104°24'15.506"W	0.00	
9217.00†	90.000	0.609	6321.00	2599.42	2556.00	-519.18	40°22'17.782"N	104°24'15.492"W	0.00	
9317.00†	90.000	0.609	6321.00	2698.59	2655.99	-518.12	40°22'18.770"N	104°24'15.478"W	0.00	
9417.00†	90.000	0.609	6321.00	2797.75	2755.99	-517.06	40°22'19.758"N	104°24'15.464"W	0.00	
9517.00†	90.000	0.609	6321.00	2896.92	2855.98	-516.00	40°22'20.746"N	104°24'15.451"W	0.00	
9617.00†	90.000	0.609	6321.00	2996.09	2955.98	-514.94	40°22'21.734"N	104°24'15.437"W	0.00	
9717.00†	90.000	0.609	6321.00	3095.26	3055.97	-513.87	40°22'22.722"N	104°24'15.423"W	0.00	
9817.00†	90.000	0.609	6321.00	3194.43	3155.96	-512.81	40°22'23.710"N	104°24'15.410"W	0.00	
9917.00†	90.000	0.609	6321.00	3293.60	3255.96	-511.75	40°22'24.698"N	104°24'15.396"W	0.00	
10017.00†	90.000	0.609	6321.00	3392.77	3355.95	-510.69	40°22'25.686"N	104°24'15.382"W	0.00	
10117.00†	90.000	0.609	6321.00	3491.94	3455.95	-509.62	40°22'26.675"N	104°24'15.369"W	0.00	
10217.00†	90.000	0.609	6321.00	3591.11	3555.94	-508.56	40°22'27.663"N	104°24'15.355"W	0.00	
10317.00†	90.000	0.609	6321.00	3690.28	3655.94	-507.50	40°22'28.651"N	104°24'15.341"W	0.00	
10417.00†	90.000	0.609	6321.00	3789.45	3755.93	-506.44	40°22'29.639"N	104°24'15.327"W	0.00	
10517.00†	90.000	0.609	6321.00	3888.62	3855.93	-505.37	40°22'30.627"N	104°24'15.314"W	0.00	



Planned Wellpath Report

STATE NORTH PLATTE 024-K21-26HNB (REV-B.0) PWP

Page 6 of 8



REFERENCE WELLPATH IDENTIFICATION			
Operator	BONANZA CREEK OIL COMPANY	Slot	SLOT#08 STATE NORTH PLATTE 024-K21-26HNB (519'FSL & 2382'FEL,SEC.26)
Area	COLORADO	Well	STATE NORTH PLATTE 024-K21-26HNB
Field	WELD COUNTY	Wellbore	STATE NORTH PLATTE 024-K21-26HNB PWB
Facility	SEC.26-T5N-R63W		

WELLPATH DATA (124 stations) † = interpolated/extrapolated station										
MD [ft]	Inclination [°]	Azimuth [°]	TVD [ft]	Vert Sect [ft]	North [ft]	East [ft]	Latitude	Longitude	DLS [°/100ft]	Comments
10617.00†	90.000	0.609	6321.00	3987.79	3955.92	-504.31	40°22'31.615"N	104°24'15.300"W	0.00	
10717.00†	90.000	0.609	6321.00	4086.96	4055.91	-503.25	40°22'32.603"N	104°24'15.286"W	0.00	
10817.00†	90.000	0.609	6321.00	4186.13	4155.91	-502.19	40°22'33.591"N	104°24'15.273"W	0.00	
10879.81	90.000	0.609	6321.00 ¹	4248.42	4218.72	-501.52	40°22'34.212"N	104°24'15.264"W	0.00	End of Tangent

HOLE & CASING SECTIONS -									
Ref Wellbore: STATE NORTH PLATTE 024-K21-26HNB PWB					Ref Wellpath: STATE NORTH PLATTE 024-K21-26HNB (REV-B.0) PWP				
String/Diameter	Start MD [ft]	End MD [ft]	Interval [ft]	Start TVD [ft]	End TVD [ft]	Start N/S [ft]	Start E/W [ft]	End N/S [ft]	End E/W [ft]
7in Casing Intermediate	17.00	6737.48	6720.48	17.00	6321.01	0.00	0.00	76.62	-545.53



Planned Wellpath Report

STATE NORTH PLATTE 024-K21-26HNB (REV-B.0) PWP

Page 7 of 8



REFERENCE WELLPATH IDENTIFICATION			
Operator	BONANZA CREEK OIL COMPANY	Slot	SLOT#08 STATE NORTH PLATTE 024-K21-26HNB (519'FSL & 2382'FEL,SEC.26)
Area	COLORADO	Well	STATE NORTH PLATTE 024-K21-26HNB
Field	WELD COUNTY	Wellbore	STATE NORTH PLATTE 024-K21-26HNB PWB
Facility	SEC.26-T5N-R63W		

TARGETS									
Name	MD [ft]	TVD [ft]	North [ft]	East [ft]	Grid East [US ft]	Grid North [US ft]	Latitude	Longitude	Shape
STATE NORTH PLATTE F-J-26HNB SECTION 26		-15.00	4244.28	-1830.53	3303950.84	1381774.54	40°22'34.464"N	104°24'32.436"W	polygon
1) STATE NORTH PLATTE 024-K21- 26HNB BHL Rev-2 From Plat (470'FNL & 2285'FWL,SEC.26)	10879.81	6321.00	4218.72	-501.52	3305280.01	1381765.42	40°22'34.212"N	104°24'15.264"W	point
STATE NORTH PLATTE 024-K21- 26HNB BHL Rev-1 From Plat (470'FNL & 2285'FWL,SEC.26)		6327.00	4218.72	-501.52	3305280.01	1381765.42	40°22'34.212"N	104°24'15.264"W	point
STATE NORTH PLATTE F-J-26HNB HARDLINE (460' SETBACKS)		6337.00	4244.28	-1830.53	3303950.84	1381774.54	40°22'34.464"N	104°24'32.436"W	polygon
Ex.STATE #1-26 (500' Radius)		7060.00	1490.49	1726.79	3307541.81	1379065.10	40°22'07.252"N	104°23'46.475"W	circle

SURVEY PROGRAM -				
Ref Wellbore: STATE NORTH PLATTE 024-K21-26HNB PWB		Ref Wellpath: STATE NORTH PLATTE 024-K21-26HNB (REV-B.0) PWP		
Start MD [ft]	End MD [ft]	Positional Uncertainty Model	Log Name/Comment	Wellbore
17.00	10879.81	NaviTrak (Standard)		STATE NORTH PLATTE 024-K21-26HNB PWB



Planned Wellpath Report

STATE NORTH PLATTE 024-K21-26HNB (REV-B.0) PWP

Page 8 of 8



REFERENCE WELLPATH IDENTIFICATION			
Operator	BONANZA CREEK OIL COMPANY	Slot	SLOT#08 STATE NORTH PLATTE 024-K21-26HNB (519'FSL & 2382'FEL,SEC.26)
Area	COLORADO	Well	STATE NORTH PLATTE 024-K21-26HNB
Field	WELD COUNTY	Wellbore	STATE NORTH PLATTE 024-K21-26HNB PWB
Facility	SEC.26-T5N-R63W		

WELLPATH COMMENTS					
MD [ft]	Inclination [°]	Azimuth [°]	TVD [ft]	Comment	
3265.49	12.000	227.252	3232.00	Parkman	
6223.45	41.157	0.609	6119.00	Sharon Springs	
6419.18	62.687	0.609	6239.00	Niobrara "A" Chalk	
6441.94	65.191	0.609	6249.00	Niobrara "A" Marl	
6616.39	76.680	0.609	6307.00	Niobrara "B" Chalk	

DESIGN COMMENTS					
MD [ft]	Inclination [°]	Azimuth [°]	TVD [ft]	Comment	
17.00	0.000	227.252	17.00	Tie On	
1200.00	0.000	227.252	1200.00	End of Tangent	
2000.00	12.000	227.252	1994.16	End of Build	
4810.90	12.000	227.252	4743.64	End of Tangent	
5610.90	0.000	0.609	5537.80	End of Drop	
5849.30	0.000	0.609	5776.20	End of Tangent	
6485.66	70.000	0.609	6265.66	End of Build	
6555.66	70.000	0.609	6289.60	End of Tangent	
6737.48	90.000	0.609	6321.01	End of 3D Arc	
10879.81	90.000	0.609	6321.00	End of Tangent	